



Deck Lift Assist Kit
for Z-Master® Mowers

MODEL NO. 78473

INSTALLATION
INSTRUCTIONS

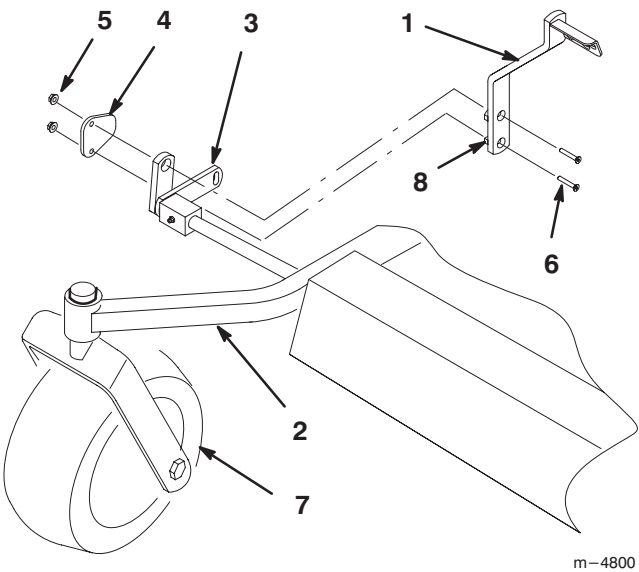
Loose Parts

Note: Use the chart below to identify parts for assembly.

DESCRIPTION	QTY.	USE
Deck Lift Lever	1	Install Deck Lift Lever
Strap	1	
Screw	2	
Nut	2	

Installing Deck Lift Lever

- 1. Place deck lift lever between mower frame and lift arm. Ensure that the deck lift arm is between both welded bars on lift arm (Fig. 1).
- 2. Place the strap, with the narrow end towards the rear of the machine, on the outside of deck lift arm (Fig. 1).
- 3. Install screws and nuts as shown in figure 1.



m-4800

Figure 1

1. Deck Lift Lever

2. Mower Frame

3. Deck Lift Arm (Shown exploded for ease of showing assembly)
4. Strap

5. Nut

6. Screw

7. Right Front Tire

8. Welded Bar