



Reelmaster 5200D 2WD

Traction Unit

Model No. 03540-20000001 and Up

Parts Catalog

Ordering Replacement Parts

To order replacement parts, please supply: the part number, the quantity, and the description of each part desired.

Understanding Reference Numbers

Each identified part in an illustration has a reference number. The reference number for a part also appears in the parts list, along with other information about the part.

This catalog uses two special reference number formats, one to indicate parts in a service assembly and another to indicate the quantity of a given part in an illustration.

Service Assembly Reference Numbers

Parts in service assemblies have reference numbers in the form **a:b**. The **a** represents the reference number of the entire service assembly and the **b** represents a sequential number unique to each part within the service assembly.

For example, a wheel assembly might be identified by reference number **6**, the tire by **6:1**, the valve by **6:2**, and the wheel by **6:3**. When you order the assembly identified by reference number **6**, you receive all parts identified by reference numbers **6:1**, **6:2**, and **6:3**. However, you may also order any part individually.

Reference numbers of this type appear in illustrations and in part lists.

Reference Numbers Indicating Quantity

In an illustration, if a reference number indicates more than one part, the reference number has the form **nX y**. The **n** represents the quantity of the part, the **X** is the multiplication symbol, and the **y** represents the reference number.

For example, in an illustration, the reference number **2X 37** means that two of the parts identified by reference number **37** are indicated.

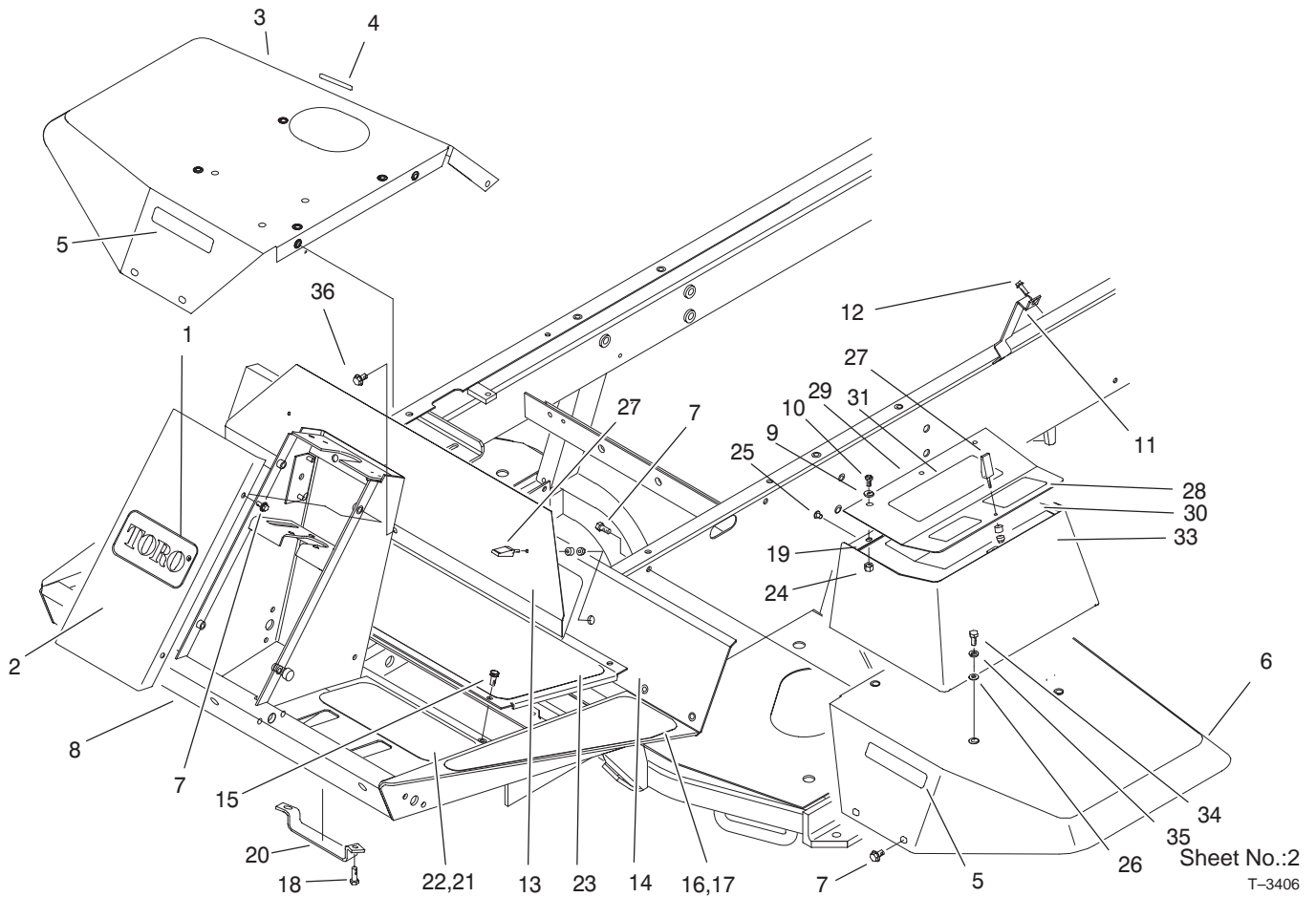
Contents

Description	Page	Description	Page
Frame and Body Assembly	4	Rear Lift Arm Installation Assembly	43
Steering Tower Assembly	5	Hydraulic Cylinder Assembly No. 93–9311	44
Steering Valve Assembly No. 75–0600	6	Rear Lift Arm Assembly	45
Traction and Brake Pedals Assembly	7	Rear Axle Support Assembly	46
Seat Frame and Throttle Assembly	8	Rear Axle Assembly No. 18–4029–03	47
Seat Assembly	9	Hydraulic Cylinder No. 75–1200	48
Seat Suspension Assembly No. 75–3000	10	Crankcase Assembly	49
Control Console Assembly	11	Oil Pan Assembly	50
Hydraulic Filter and Reservoir Assembly	12	Cylinder Head Assembly	51
Fuel Tank Assembly	13	Gear Case and Oil Filter Assembly	52
Front Axle Assembly	14	Head Cover Assembly	53
Axle Assembly No. 94–6933–03	15	Dipstick and Guide Assembly	54
Brake Assembly	17	Main Bearing Case Assembly	55
Transmission Support and Transmission Assembly	18	Camshaft Assembly	56
Transmission Assembly No. 75–0012	19	Piston and Crankshaft Assembly	57
Traction Control Assembly	21	Flywheel Assembly	59
Gear Pump Installation Assembly	22	Fuel Camshaft Assembly	60
Gear Pump Assembly No. 98–9796	23	Engine Stop Lever Assembly	61
Engine Installation Assembly	24	Stop Solenoid and Fuel Pump Assembly	62
Muffler and Pump Drive Assembly	25	Injection Pump Installation Assembly	63
Engine Components Assembly	26	Injection Pump Assembly No. 98–9643	64
Air Cleaner Assembly No. 98–4517	27	Governor Assembly	65
Water/Fuel Separator Assembly No. 98–9305 ..	28	Speed Control Plate Assembly	66
Engine Fan and Clutch Installation Assembly ..	29	Nozzle Holder and Glow Plug Assembly	67
Radiator Frame Assembly	30	Nozzle Holder Assembly	68
Oil Cooler Assembly	31	Alternator and Pulley Assembly	69
Frame and Body Assembly	32	Alternator Assembly No. 98–9474	70
Hydraulic Control Block and Hoses Assembly ..	33	Starter Mount Assembly	71
Hydraulic Manifold Assembly No. 98–4579	34	Starter Assembly No. 98–9705	72
Front Hydraulic Manifold Assembly	35	Water Flange and Thermostat Assembly	73
Rear Hydraulic Manifold Assembly	36	Water Pump Assembly	74
Reel Motors Assembly	37	Valve and Rocker Arm Assembly	775
Reel Motor Assembly No. 93–1375	38	Exhaust Manifold and Gasket Assembly	76
Carrier Frame Assembly	39	Hydraulic Schematic	77
Hydraulic Cylinder Assembly No. 93–9310	40	Electrical Schematic	78
Hydraulic Cylinder Assembly No. 99–6986	41	Electrical Schematic – Turfdefender	79
Front Lift Arms Assembly	42		

Part Description Abbreviations

Part descriptions in this catalog may include the following abbreviations.

Abbreviation	Meaning	Abbreviation	Meaning
AR	as required	INC	incorporated
ASM	assembly	LH	left hand
CARR	carriage	NI	nylon insert
DEG	degrees	PPH	Phillips pan head
FH	flat head	PTH	Phillips truss head
GA	gauge	PTO	power take off
HF	hex flange	RH	right hand
HH	hex head	SFH	slotted fillister head
HHF	hex head flange	SHH	slotted hex head
HLH	hex lag head	SQH	square head
HJ	hex jam	SHWH	slotted hex washer head
HOC	height-of-cut	SPH	slotted pan head
HS	hex socket	SRH	slotted round head
HSBH	hex socket button head	STD	standard
HSFH	hex socket flat head	TAP	self tapping
HSH	hex socket head	TTH	Torx truss head
HWH	hex washer head	WH	wing head
HWHTF	hex washer head thread forming		

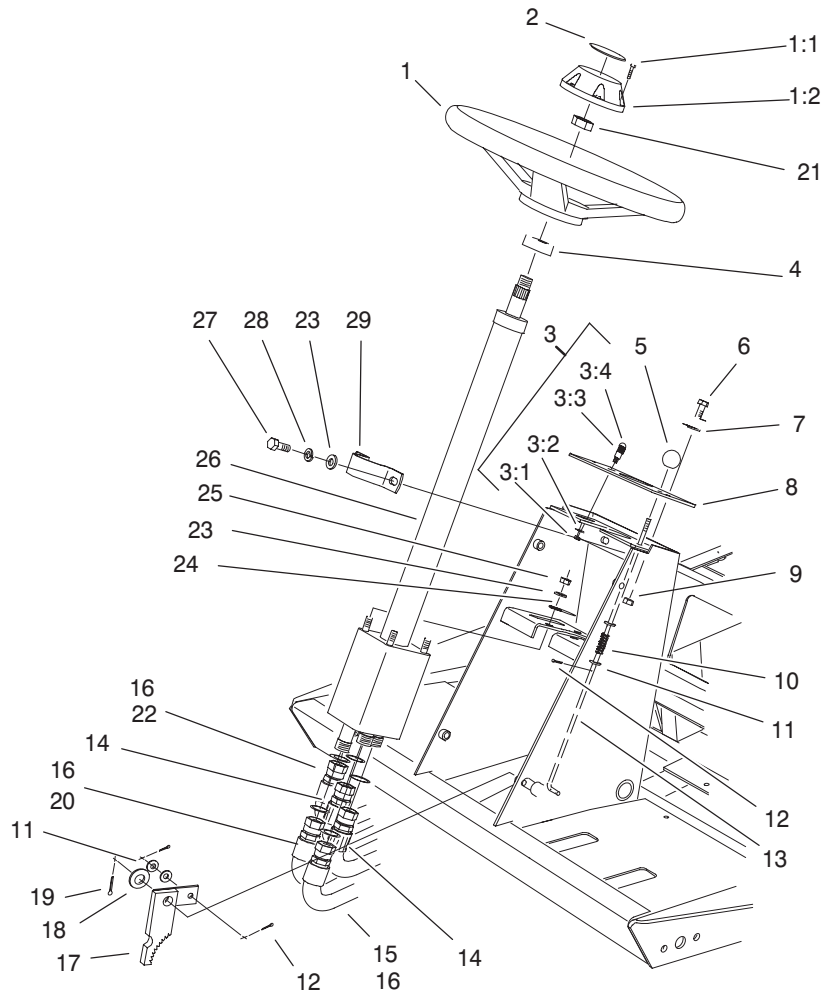


Frame And Body Assembly

Ref. No.	Part No.	Qty.	Description
1	62-5550	1	Decal
2	75-1420-01	1	Cover-Front, Tower
3	93-7579	1	Fender-RH
4	93-6686	1	Decal-Oil, Hydraulic
5	93-6689	2	Decal - No Riders
6	75-3860	1	Fender-LH
7	3234-14	14	Screw-HHF
8	100-3717	1	Frame ASM,Welded
9	3256-1	3	Washer-Flat
10	3258-166	3	Screw
11	98-4572	1	Bracket-Clamp, Hose
12	32144-14	2	Screw-HWH
13	75-1390-01	1	Cover-Access, Front
14	75-1410-01	1	Plate-Access,Floor
15	75-6840	4	Knob - Knurled
*15	3234-7	1	Screw-HHF
16	75-0650	1	Tread-Footrest, LH
17	75-0640	1	Tread-Footrest, RH
18	322-4	2	Screw-HH
19	75-5780	1	Hinge-Steel
20	93-3626	1	Bracket - Hose
21	75-0620	1	Tread-Foot, LH
22	75-0610	1	Tread-Foot, RH
23	75-0630	1	Tread-Foot, Center
24	32128-33	3	Nut-HF
25	93-8744	3	Pop - Rivet

Ref. No.	Part No.	Qty.	Description
26	52-2900	4	Washer
27	74-5950	3	Latch-Swell
28	93-6698	1	Decal - Towing
29	75-6260-03	1	Cover-Box, Tool
*30	95-0832	1	Decal - Service
30	100-3816	1	Decal-Service Instructions
31	93-8051	1	Decal-Slopes
33	75-5810-03	1	Box-Tool
34	322-3	4	Screw-HH
35	3256-3	4	Washer-Flat
36	3234-5	1	Screw-HHF

* Not illustrated



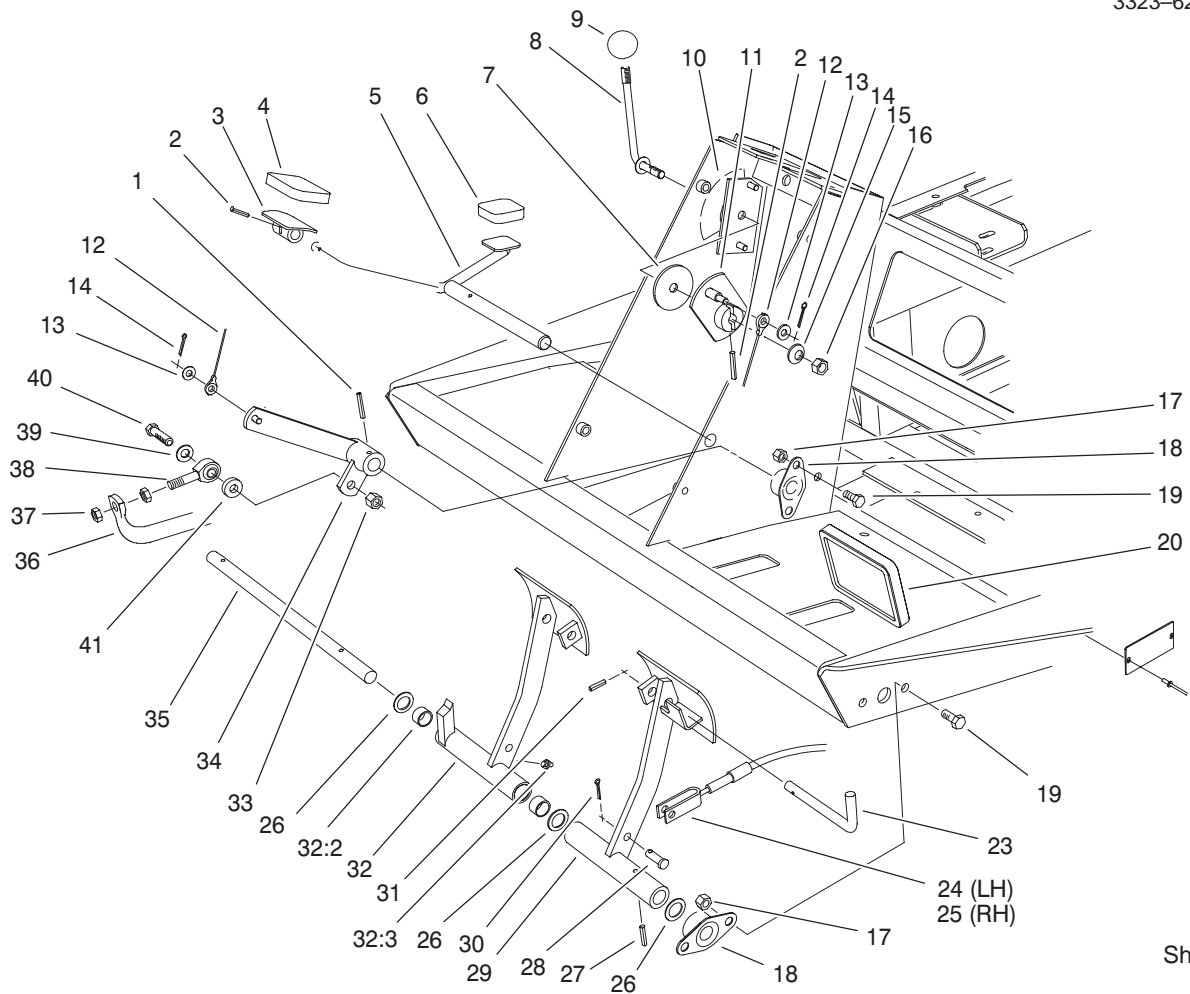
Sheet No.:3
T-3407

Steering Tower Assembly

Ref. No.	Part No.	Qty.	Description
1	75-0560	1	Wheel-Steering
1:1	32144-21	1	Screw-F/W
1:2	68-5140	1	Cap-Wheel, Steering
2	68-5370	1	Decal - Toro
3	44-2210	1	Light-Indicator, Red
3:1	218-535	1	Nut-Hex
3:2	218-536	1	Washer-Lock
3:3	93-7480	1	Led - Miniature Bayonet
3:4	218-533	1	Lens
4	21-9260	1	Cover-Dust
5	233-17	1	Knob
6	3258-166	2	Screw
7	3256-1	2	Washer-Flat
8	93-6682	1	Panel - Tower
9	3296-42	2	Nut-Lock
10	95-1821-03	1	Spring - Compression
11	3256-22	4	Washer-Flat
12	3272-5	3	Pin-Cotter
13	75-1490	1	Rod-Brake, Parking
14	75-6230	2	Hose
15	75-6240	1	Hose
*16	3290-378	4	Tie-Cable
17	63-7900-03	1	Rack
18	3256-26	1	Washer-Flat
19	3272-10	1	Pin-Cotter

Ref. No.	Part No.	Qty.	Description
20	75-5940	1	Hose
21	3220-6	1	Nut-Jam
22	75-6250	1	Hose
23	3256-23	6	Washer-Flat
24	3255-8	1	Washer-Lock/Ext
25	3296-20	4	Nut-Lock NI
26	75-0600	1	Unit-Steering, Power
27	32144-26	2	Screw-Flow, Penta
28	3253-4	2	Washer
29	75-2810	1	Bracket-Column, Steering
*99	3290-410	3	Push Mt Tie

* Not illustrated

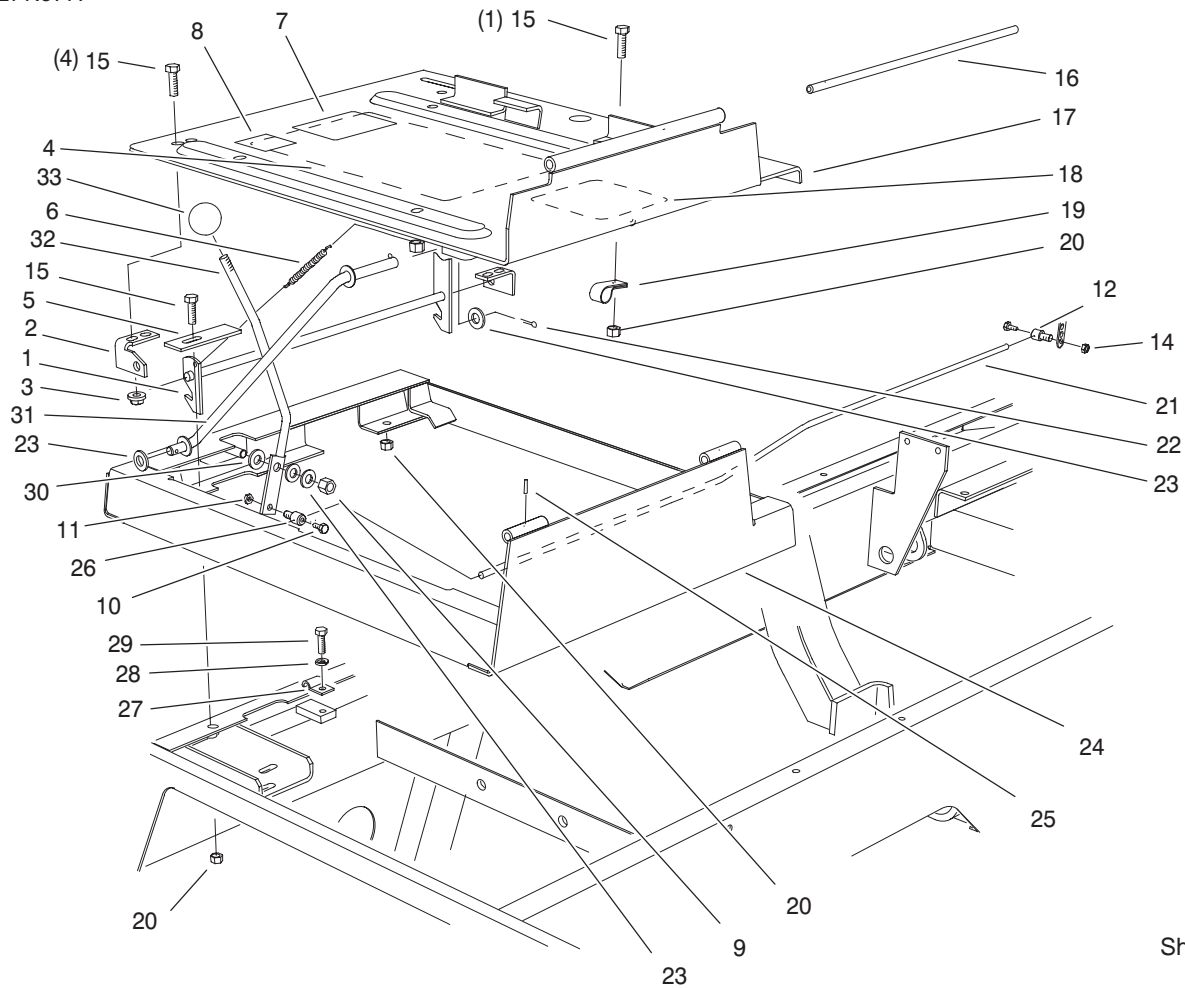


Sheet No.:4

T-3408

Traction And Brake Pedal Assembly

Ref. No.	Part No.	Qty.	Description	Ref. No.	Part No.	Qty.	Description
1	32121-6	1	Pin-Roll	29	75-1440-03	1	Pedal-Brake, LH
2	32121-45	2	Pin-Spring	30	3272-10	4	Pin-Cotter
3	49-6440-03	1	Pedal-Forward	31	32121-50	1	Pin-Spring
4	74-9100	1	Pad-Pedal, Forward	32	75-1430	1	Pedal-Brake, RH
5	75-2970	1	Pedal-Traction	32:2	256-42	2	Bushing
6	74-9110	1	Pad-Pedal, Reverse	32:3	302-5	1	Fitting-Lube
7	75-6550	1	Disc-Friction	33	3296-39	1	Nut-Lock, NI
8	75-6490	1	Lever	34	75-3270-03	1	Hub-Pivot, Traction
9	233-42	1	Knob	35	75-1470	1	Pin-Pivot, Brake
10	93-6699	1	Decal - Fast/Slow	36	75-2170-03	1	Tube-Control, Pump
11	75-6510	1	Bracket-Lever	37	3220-3	2	Nut-Jam
12	75-6580	1	Cable - Pedal	38	2411-36	1	Bearing-End, Rod
13	3256-22	2	Washer-Flat	39	3256-24	1	Washer-Flat
14	3272-2	2	Pin-Cotter	40	323-9	1	Screw-HH
15	3290-461	1	Washer-Spring	41	5-0652	1	Washer
16	3296-59	1	Nut-Lock, NI				
17	3296-29	8	Nut-Lock, NI				
18	256-236	4	Bearing-Mt, Flange				
19	322-3	8	Screw-HH				
20	93-8742	2	Footpad - Brake				
23	63-7880	1	Pin-Latch, Brake				
24	63-7733	1	LH Brake Cable ASM				
25	63-7732	1	RH Brake Cable ASM				
26	3256-69	3	Washer-Flat				
27	32121-16	1	Pin-Spring				
28	283-58	4	Pin-Clevis				

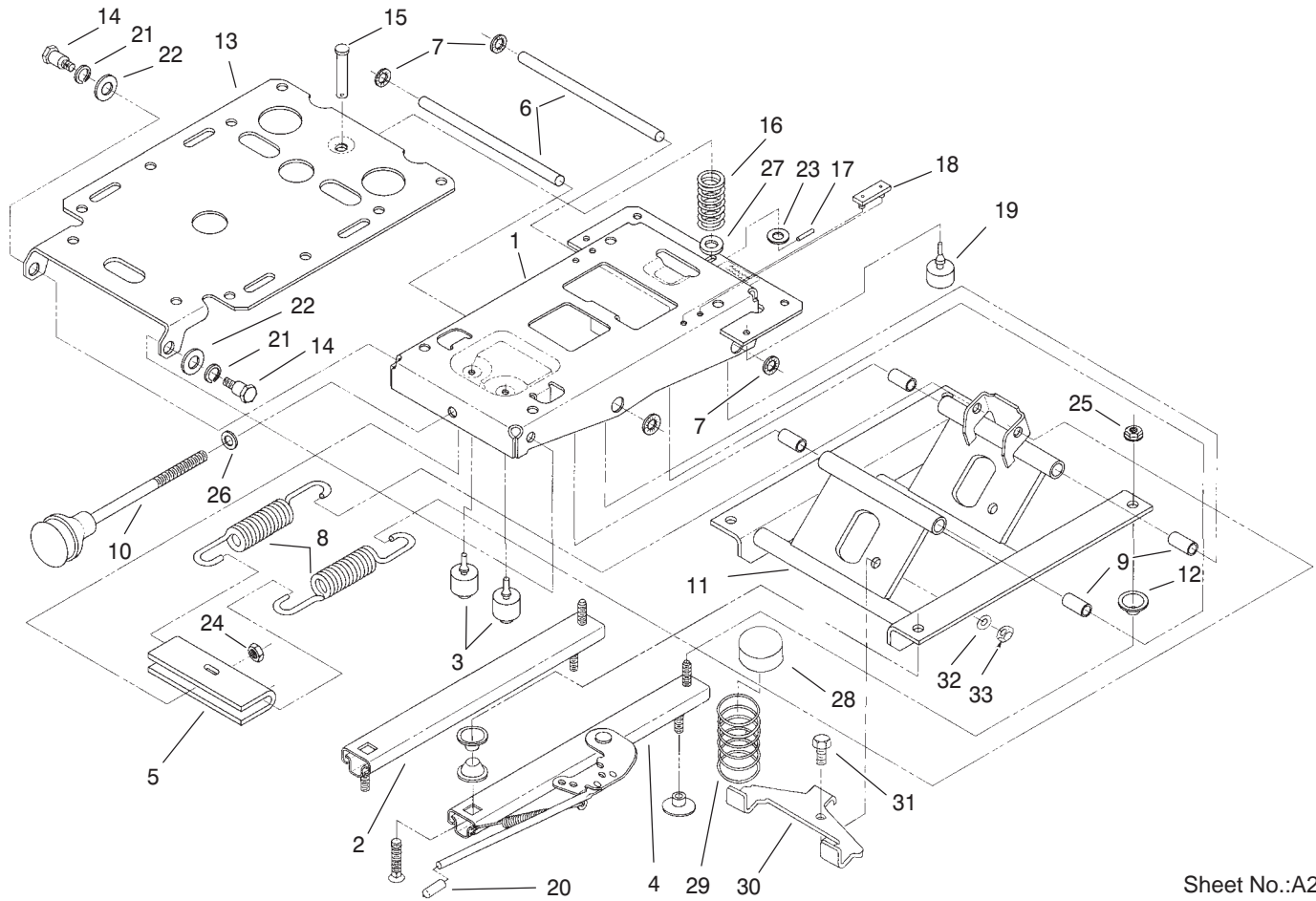


Sheet No.:5
T-3409

Seat Frame And Throttle Assembly

Ref. No.	Part No.	Qty.	Description
1	98-2354-03	1	Latch-Seat
2	98-2353	2	Bracket-Latch, Seat
3	32128-25	4	Nut-Flange
4	98-9342	1	Decal
5	98-9302	1	Plate-Stop, Idler
6	66-4190-03	1	Spring-Idler, Clutch
7	92-5524	1	Decal-Rating, Noise
8	63-9920	1	Decal-Level, Noise
9	3296-39	3	Nut-Lock, NI
10	25-8640	2	Screw-Machine, HH
11	3296-3	1	Nut-Lock NI
12	98-9311	1	Swivel - Throttle
14	3296-20	1	Nut-Lock NI
15	322-3	9	Screw-HH
16	75-3400	1	Shaft-Pivot, Seat
17	98-2350-03	1	Plate-Seat
18	93-8060	1	Decal - Reels
19	2412-93	1	R-Clamp
20	3296-29	6	Nut-Lock, NI
21	98-9303	1	Cable - Throttle
22	3272-10	2	Pin-Cotter
23	3256-24	3	Washer-Flat
24	98-2352-03	1	Seat Frame Wa
25	32121-38	1	Pin-Roll
26	93-0021	1	Swivel-Cable, Throttle
27	3-6657	1	Clip-Skid

Ref. No.	Part No.	Qty.	Description
28	3253-3	1	Washer-Lock/Sp
29	321-4	1	Screw-HH
30	66-2920	2	Washer-Frict Throttle
31	75-3680-03	1	Rod-Seat
32	75-3430-03	1	Lever-Throttle
33	233-42	1	Knob

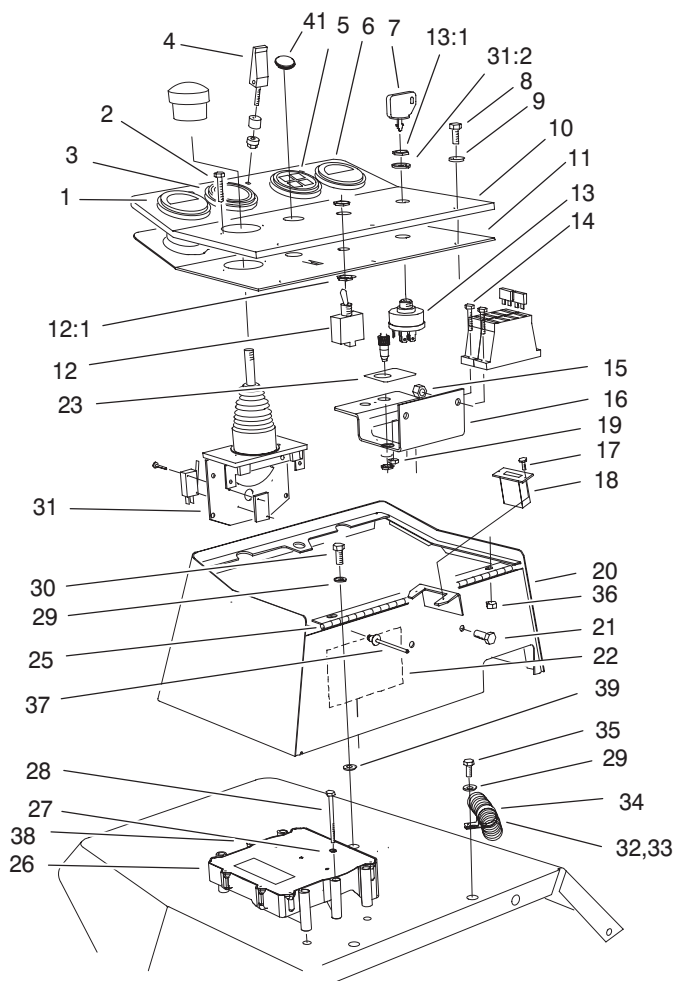


Sheet No.:A2
T-xxxx

Seat Suspension Assembly No. 75-3000

Ref. No.	Part No.	Qty.	Description
1	75-3480	1	Weldment-Upper
2	66-8530	1	Adjuster
3	66-8520	2	Bumper-Downstop
4	82-9060	1	Adjuster w/Handle
5	77-2870	1	Hanger-Spring
6	76-1910	2	Shaft-Pivot
7	66-8560	4	Nut-Push
8	76-1940	2	Spring-Extension
9	76-1920	4	Bearing-Sleeve
10	76-1930	1	Knob-Adj, Tension
11	66-8610	1	Weldment-Lower
12	66-9290	6	Spacer-Suspension
13	75-3580	1	Plate-Seat
14	75-3510	2	Bolt
15	80-4860	1	Pin - Clevis
16	75-3530	1	Spring
17	75-3540	1	Roll Pin
18	75-3550	2	Bumper
19	76-2940	2	Bumper
20	75-3570	1	Tip
21	3253-6	2	Washer-Lock/Sp
22	3256-26	2	Washer-Flat
23	3256-24	1	Washer-Flat
24	3296-44	1	Nut-Lock NI
25	32128-26	4	Nut-Flange
26	3256-46	1	Washer-Flat

Ref. No.	Part No.	Qty.	Description
27	3256-5	1	Washer-Flat
28	93-3164	2	Cap
29	93-3163	2	Spring
30	93-3165	1	Bracket
31	322-6	1	Screw-HH
32	3253-33	1	Washer-Lock/Sp
33	3217-6	1	Nut-Hex



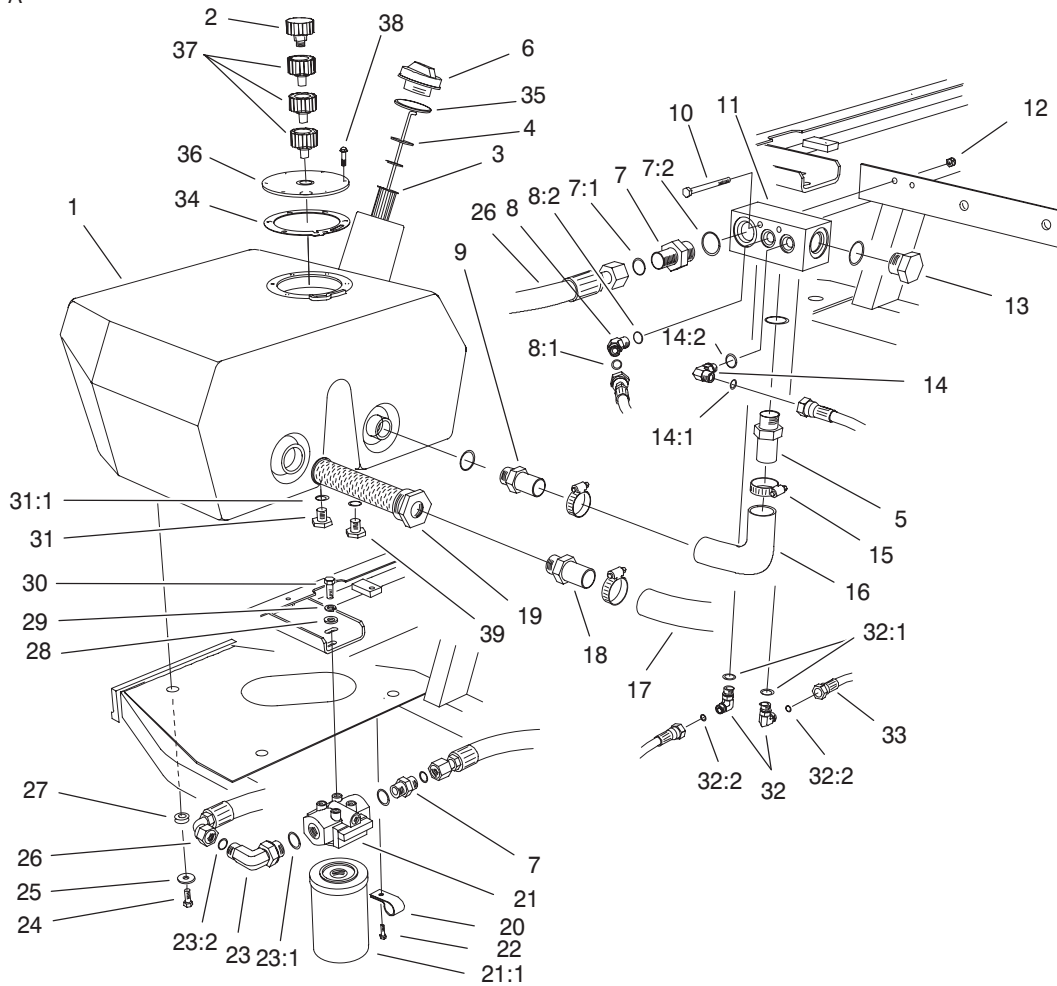
Sheet No.:7
T-3411

Control Console Assembly

Ref. No.	Part No.	Qty.	Description
1	98-9339	1	Guage – Fuel
2	3273-26	2	Screw-HSH
3	85-4420	1	Speedometer
4	74-5950	1	Latch-Swell
5	98-9306	1	Light – Warning
6	98-9308	1	Gauge – Temperature
7	63-8360	1	Key-Ignition
8	3258-166	5	Screw
9	3256-1	5	Washer-Flat
10	99-8961	1	Panel-Control
11	75-6270-03	1	Cover-Box, Control
12	99-8352	1	Switch – Backlap
12:1	218-498	2	Locknut-Hex
*12:2	218-588	3	Screw F/W
12:3	218-589	1	Washer F/W
*12:4	3253-19	3	Washer-Lock/Sp
13	27-2360	1	Switch-Key
13:1	218-446	1	Nut-Hex
13:2	218-447	1	Washer-Lock
14	32105-13	4	Screw-Shh
15	3296-42	4	Nut-Lock
16	93-7587	1	Brkt-Fuse Block/Pnl
17	32144-18	2	Screw-HH
18	75-6820	1	Hourmeter
19	3296-2	4	Nut-Lock
20	75-5740-03	1	Box-Control

Ref. No.	Part No.	Qty.	Description
21	321-39	2	Screw-HH
22	94-6767	1	Decal – Fuses
23	98-9334	1	Decal – Controller
25	75-5780	1	Hinge-Steel
26	92-5720	1	Controller-Electronic
27	3253-3	2	Washer-Lock/Sp
28	321-15	2	Screw-HH
29	3256-3	3	Washer-Flat
30	322-3	2	Screw-HH
31	98-2195	1	Joystick
32	99-8960	1	Harness-Wire, Main
33	94-6343	1	Decal-I.d., Wire
34	2412-126	1	R-Clamp
35	322-5	1	Screw-HH
36	32128-33	3	Nut-HF
37	93-8744	3	Pop – Rivet
38	93-8053	1	Decal – Ecu Label
39	52-2900	3	Washer
*40	3290-378	3	Tie-Cable
41	99-1087	1	Plug-Hole, Dash
*51	100-3700	1	Decal-Rm5200d/Rm 400d Diagnostic

* Not illustrated

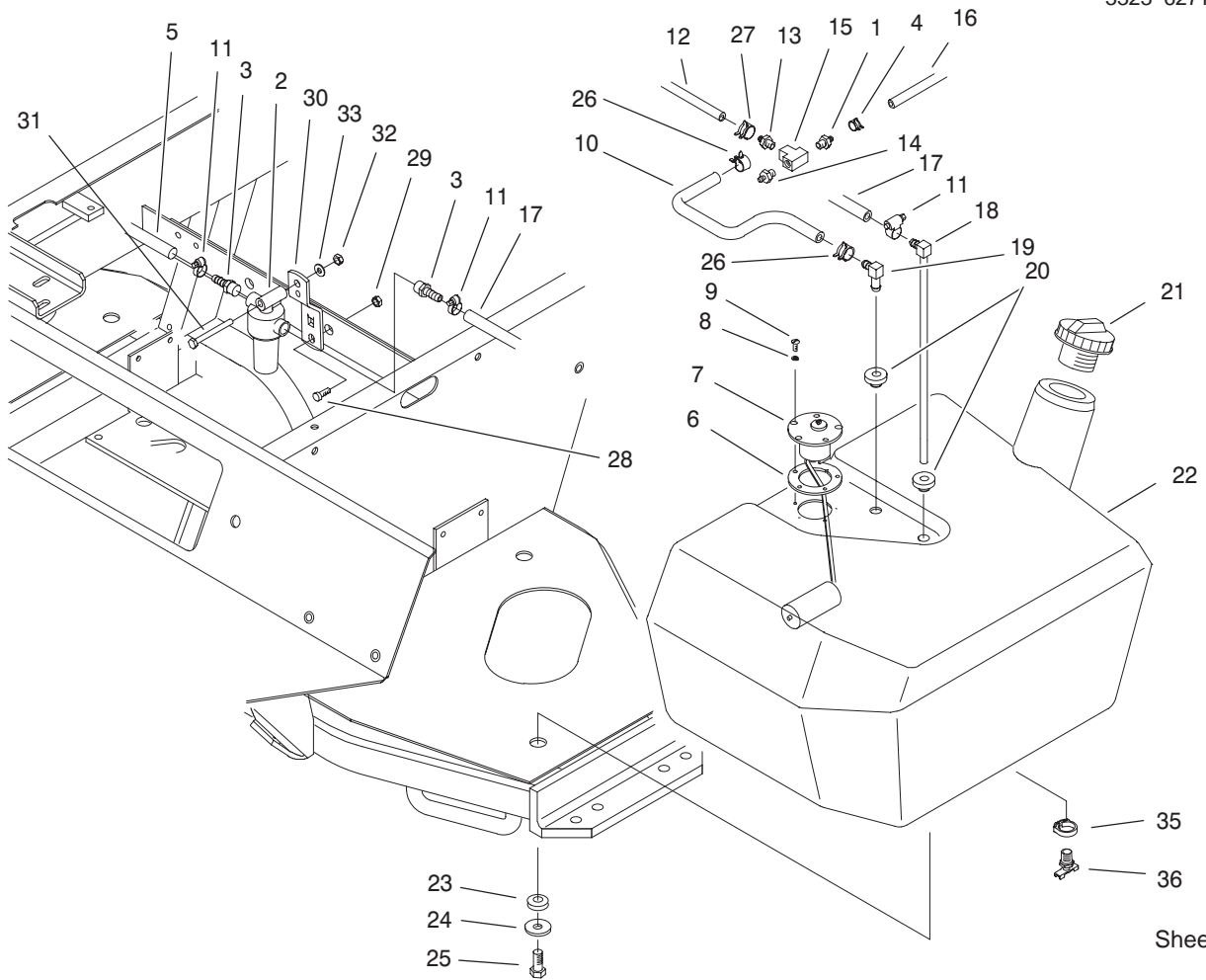


Sheet No.:8
T-3414

Hydraulic Filter And Reservoir Assembly

Ref. No.	Part No.	Qty.	Description
1	98-3918	1	Tank - Oil
2	68-6150	1	Breather-Air
3	61-2790	1	Filter-Screen
4	94-9411	1	Dipstick
5	354-73	1	Fitting
6	93-7498	1	Plug-Plastic
7	340-8	2	Adapter
7:1	237-65	2	O-Ring
7:2	237-81	2	O-Ring
8	340-87	1	Fitting-Hyd., 45°
8:1	237-22	1	O-Ring
8:2	237-42	1	O-Ring
9	99-6932	1	Fitting-Barb, Hose
10	321-23	2	Screw-HH
11	92-9098	1	Manifold - Tank
12	3296-42	2	Nut-Lock
13	354-74	1	Fitting
14	340-77	1	Fitting-Hyd. 90°
14:1	237-22	1	O-Ring
14:2	237-42	1	O-Ring
15	2412-34	3	Clamp-Hose
16	75-5720	1	Hose - Return
17	75-6870	1	Hose-Inlet, Pump
18	353-682	1	Fitting-Hose
19	75-0550	1	Suction- Strainer
20	2412-93	2	R-Clamp

Ref. No.	Part No.	Qty.	Description
21	75-1300	1	Oil Filter ASM
21:1	75-1310	1	Filter Element
22	32144-10	2	Screw-HWH
23	340-139	1	Fitting-90°
23:1	237-81	1	O-Ring
23:2	237-65	1	O-Ring
24	33105-025	3	Screw-HHF
25	63-8410	3	Washer
26	75-6130	1	Hose
27	240-11	3	Grommet
28	3256-24	2	Washer-Flat
29	3253-21	2	Washer-Lock/Sp
30	323-4	2	Screw-HH
31	353-550	1	Plug-Hydraulic
31:1	237-79	1	O-Ring
32	340-82	2	Adapter
32:1	237-42	1	O-Ring
32:2	237-35	1	O-Ring
33	94-4916	1	Drain #2 & #3 Hose ASM
34	93-7499	1	Gasket
35	237-101	1	O-Ring
36	93-7588	1	Cover - Tank
37	92-8020	3	Adapter - Breather
38	33104-020	6	Screw-HHF
39	353-508	1	Plug-O-Ring



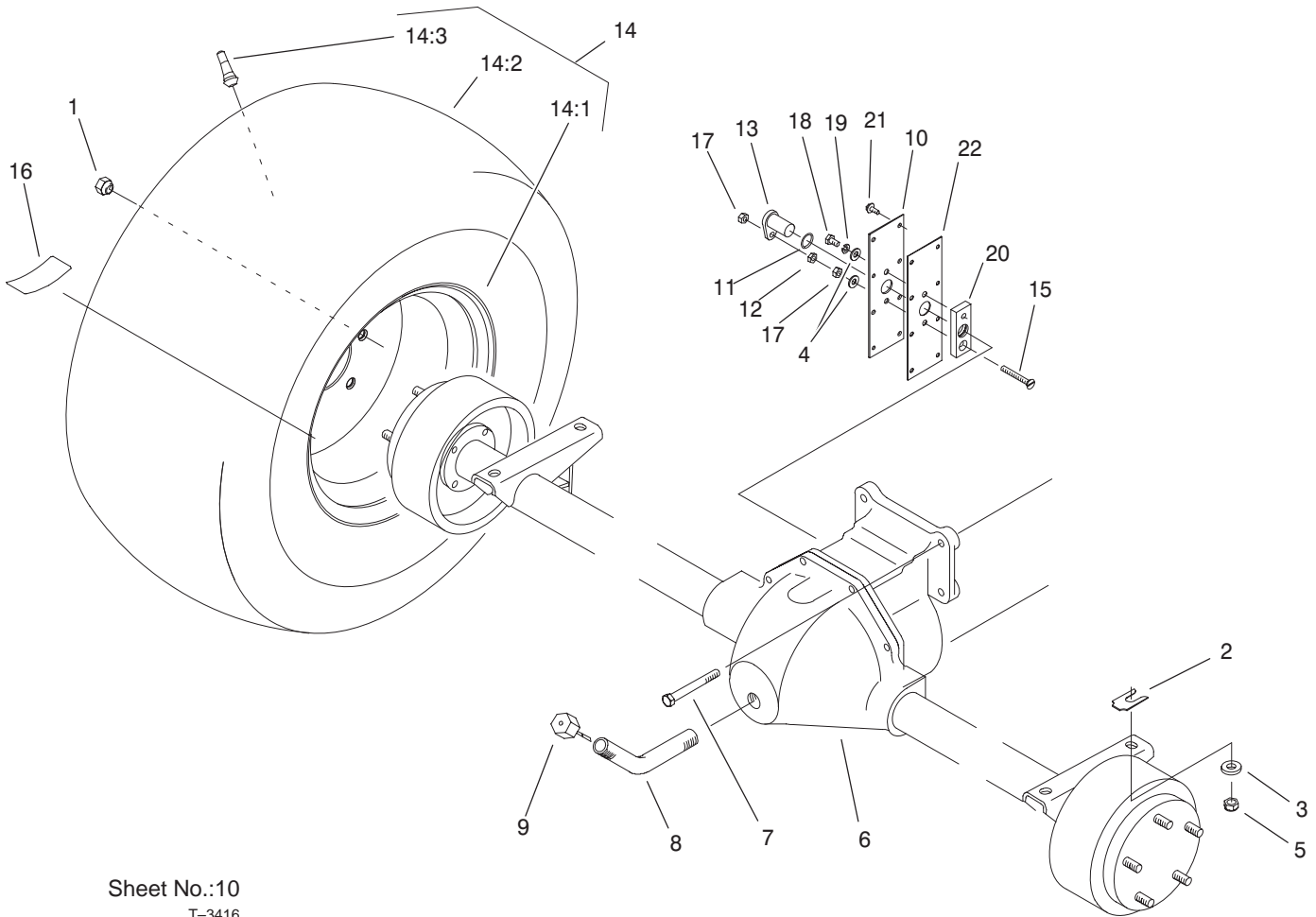
Sheet No.:9
T-3415

Fuel Tank Assembly

Ref. No.	Part No.	Qty.	Description
1	304-73	1	Connector-Hose
2	99-8351	1	Filter - Fuel, Inline
3	353-783	2	Fitting-Pump
4	2412-98	1	Clamp
5	63-7610	1	Hose-Fuel
6	62-7650	1	Gasket
7	63-7640	1	Sender-Fuel
8	3253-15	5	Washer-Lock/Sp
9	32122-24	5	Screw-Pth
10	93-2042	1	Hose - Fuel
11	2412-108	4	Clamp-Worm
12	75-4700	1	Hose-Fuel
13	354-22	1	Fitting-Barb
14	354-21	1	Fitting-Barb
15	354-20	1	Fitting-Tee
16	98-9338	1	Hose - Fuel
17	95-4276	1	Hose - Fuel
18	66-8121	1	Standpipe
19	46-6550	1	Elbow-Connector,

Ref. No.	Part No.	Qty.	Description
20	46-6560	2	90deg Bushing
21	93-3102	1	Cap - Fuel (Diesel)
22	94-3510	1	Tank - Fuel
23	240-11	3	Grommet
24	63-8410	3	Washer
25	33105-025	3	Screw-HHF
26	92-2379	2	Clamp-Hose
27	2412-146	2	Clamp-Hose
28	322-4	1	Screw-HH
29	3296-29	1	Nut-Lock,NI
30	98-9748	1	Bracket-Support, Filter
31	321-18	1	Screw-HH
32	3296-42	2	Nut-Lock
33	3256-22	1	Washer-Flat
*34	3290-378	1	Tie-Cable
35	2412-36	1	Clamp-Hose
36	304-46	1	Draincock

* Not Illustrated



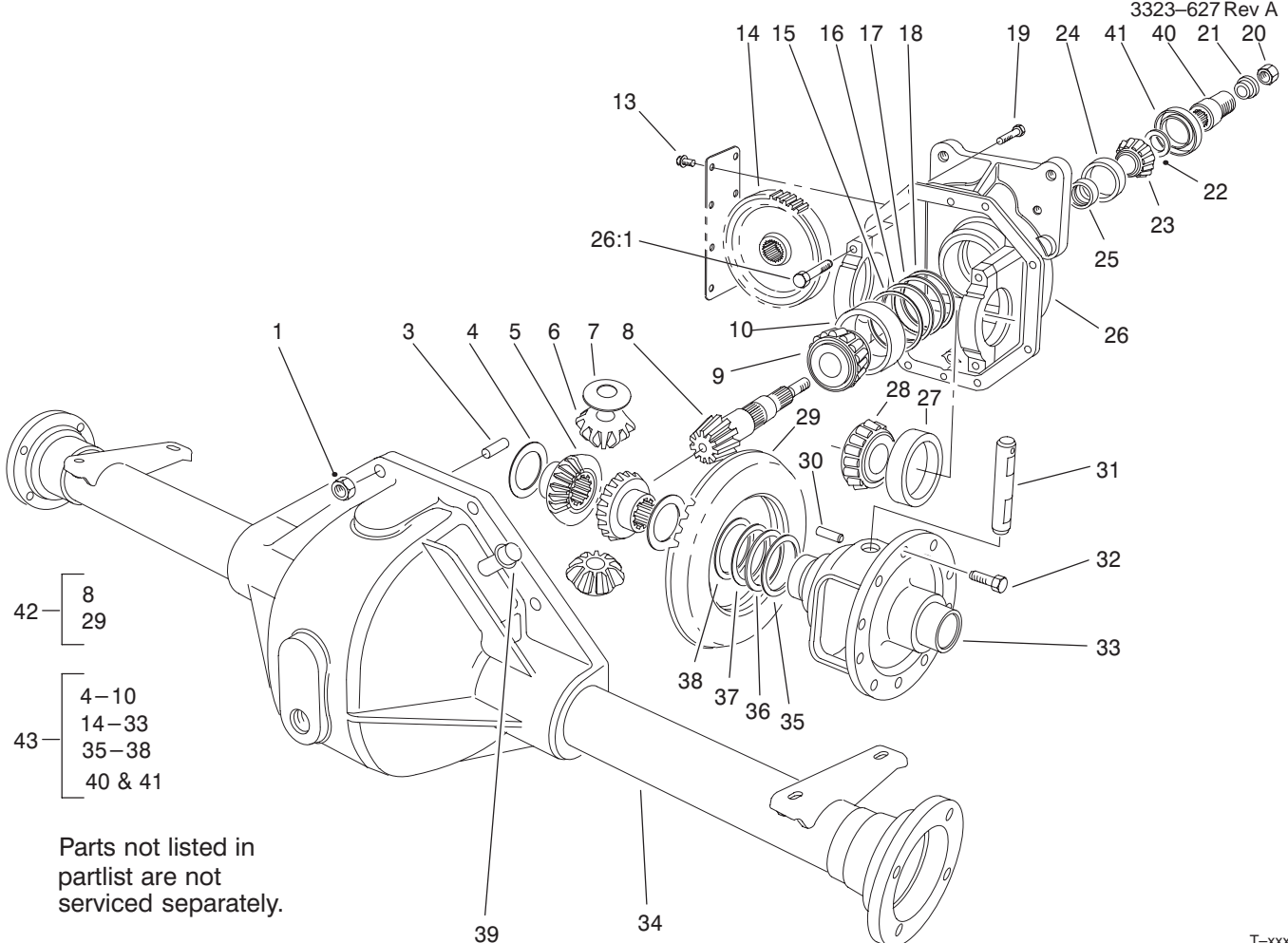
Sheet No.:10
T-3416

Front Axle Assembly

Ref. No.	Part No.	Qty.	Description
1	23-7270	10	Nut-Wheel
2	42-6080	5	Shim-Axle
3	66-6480	4	Washer
4	3256-22	2	Washer-Flat
5	3296-48	4	Nut-Lock NI
6	94-6933-03	1	Axle ASM
7	323-20	2	Screw-HH
8	75-6850	1	Tube-Fill, Oil
9	27-3710	1	Dipstick
10	85-4330	1	Cover-Gear
11	237-181	1	O-Ring
12	3218-1	1	Nut-Jam
13	85-4350	1	Sensor - Geartooth
14		2	Front Wheel & Tire ASM
14:1	217-120	1	Rim
14:2	231-134	1	Tire
14:3	232-27	1	Stem-Valve
15	32108-9	1	Screw-FH
16	76-8730	2	Decal-Torque, Wheel
17	3296-56	2	Nut-Lock, NI
18	321-2	1	Screw-HH
19	3253-3	1	Washer-Lock/Sp
20	85-4340	1	Plate-Sensor Mtg
21	32144-112	8	Screw-Forming, Thread

Ref. No.	Part No.	Qty.	Description
22	92-5797	1	Gasket - Axle
*23	3290-379	1	Tie-Cable

* Not illustrated



Parts not listed in partlist are not serviced separately.

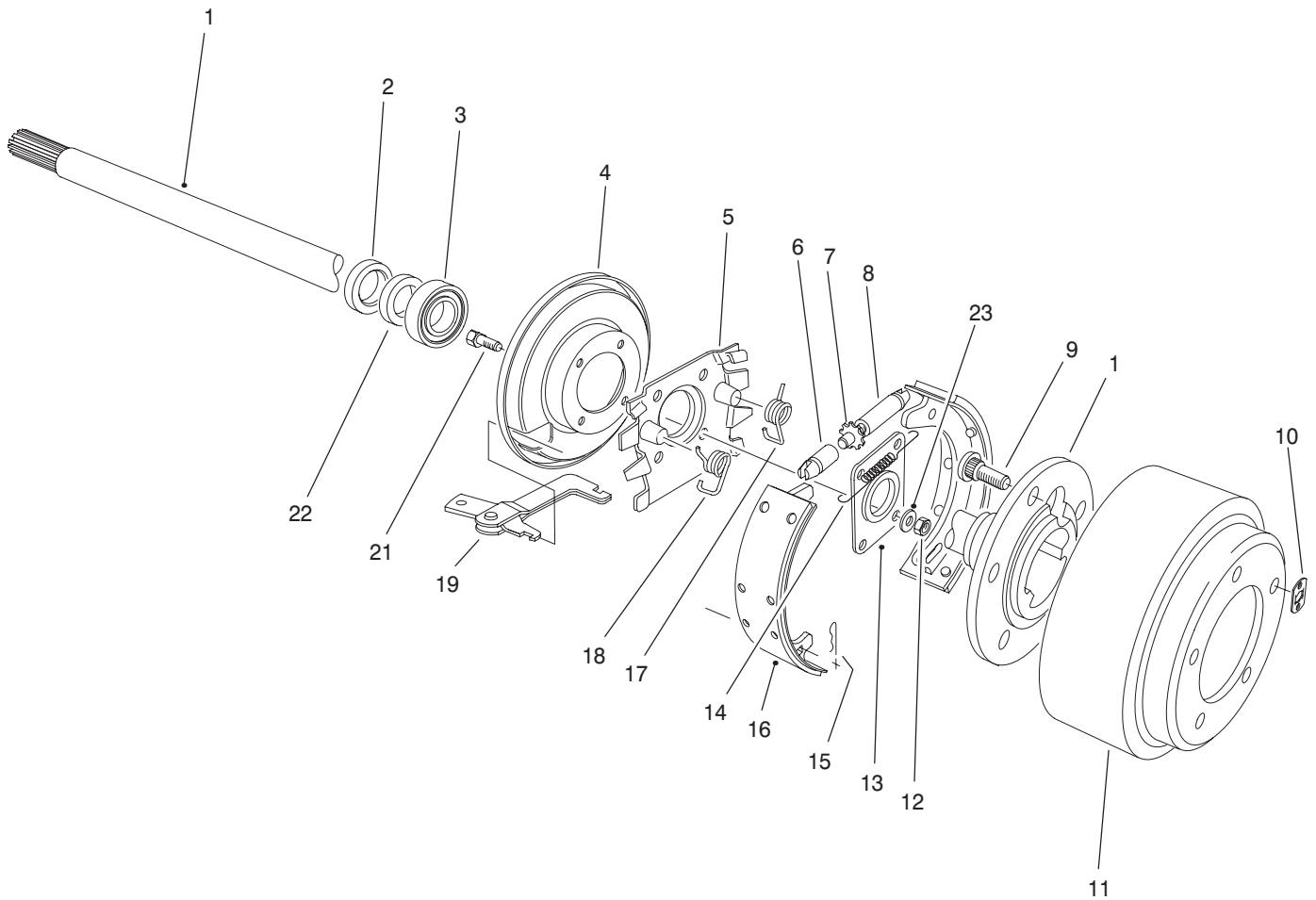
T-xxxx

Axle Assembly No. 94-6933-03

Ref. No.	Part No.	Qty.	Description
1	32144-5	8	Nut
3	21-8270	2	Pin-Dowel
4	21-7720	2	Washer-Thrust
5	24-8790	2	Gear-Bevel, Differential
6	21-7690	2	Gear-Pinion
7	21-7730	2	Washer-Thrust
9	43-6760	1	Cone-Bearing, Tapered
10	43-6750	1	Cup-Bearing, Tapered
13	32144-112	8	Screw-Forming, Thread
14	86-7230	1	Gear-Spur
15	43-6710	A/R	Diff. Adjust. Shim .003
16	43-6711	A/R	Diff. Adjust. Shim .005
17	43-6712	A/R	Diff. Adjust. Shim .010
18	43-6713	A/R	Diff. Adjust. Shim .030
19	3210-8	8	Screw-HH
20	71-4350	1	Nut
21	83-5130	1	Spacer-Pinion
22	72-3570	A/R	Shim .094-Diff. Adjust.
*	72-3571	A/R	Shim .096-Diff. Adjust.
*	72-3572	A/R	Shim .098-Diff. Adjust.
*	72-3573	A/R	Shim .100-Diff. Adjust.
*	72-3574	A/R	Shim .102-Diff. Adjust.
*	72-3575	A/R	Shim .104-Diff. Adjust.

Ref. No.	Part No.	Qty.	Description
*	72-3576	A/R	Shim .106-Diff. Adjust.
*	72-3577	A/R	Shim .108-Diff. Adjust.
*	72-3578	A/R	Shim .110-Diff. Adjust.
*	72-3580	A/R	Shim .112-Diff. Adjust.
*	72-3581	A/R	Shim .114-Diff. Adjust.
*	72-3582	A/R	Shim .116-Diff. Adjust.
*	72-3583	A/R	Shim .118-Diff. Adjust.
*	72-3584	A/R	Shim .120-Diff. Adjust.
*	72-3585	A/R	Shim .125-Diff. Adjust.
*	72-3586	A/R	Shim .127-Diff. Adjust.
*	72-3587	A/R	Shim .129-Diff. Adjust.
*	72-3588	A/R	Shim .131-Diff. Adjust.
*	72-3590	A/R	Shim .133-Diff. Adjust.
*	72-3591	A/R	Shim .135-Diff. Adjust.
*	72-3592	A/R	Shim .137-Diff. Adjust.
*	72-3593	A/R	Shim .139-Diff. Adjust.
*	72-3594	A/R	Shim .141-Diff. Adjust.
*	72-3595	A/R	Shim .143-Diff. Adjust.
*	72-3596	A/R	Shim .145-Diff. Adjust.
*	72-3597	A/R	Shim .147-Diff. Adjust.
*	72-3598	A/R	Shim .149-Diff. Adjust.
*	72-3600	A/R	Shim .151-Diff. Adjust.
23	254-91	1	Cone-Bearing
24	21-8390	1	Cup-Bearing
25	21-8020	1	Spacer-Pinion, Front

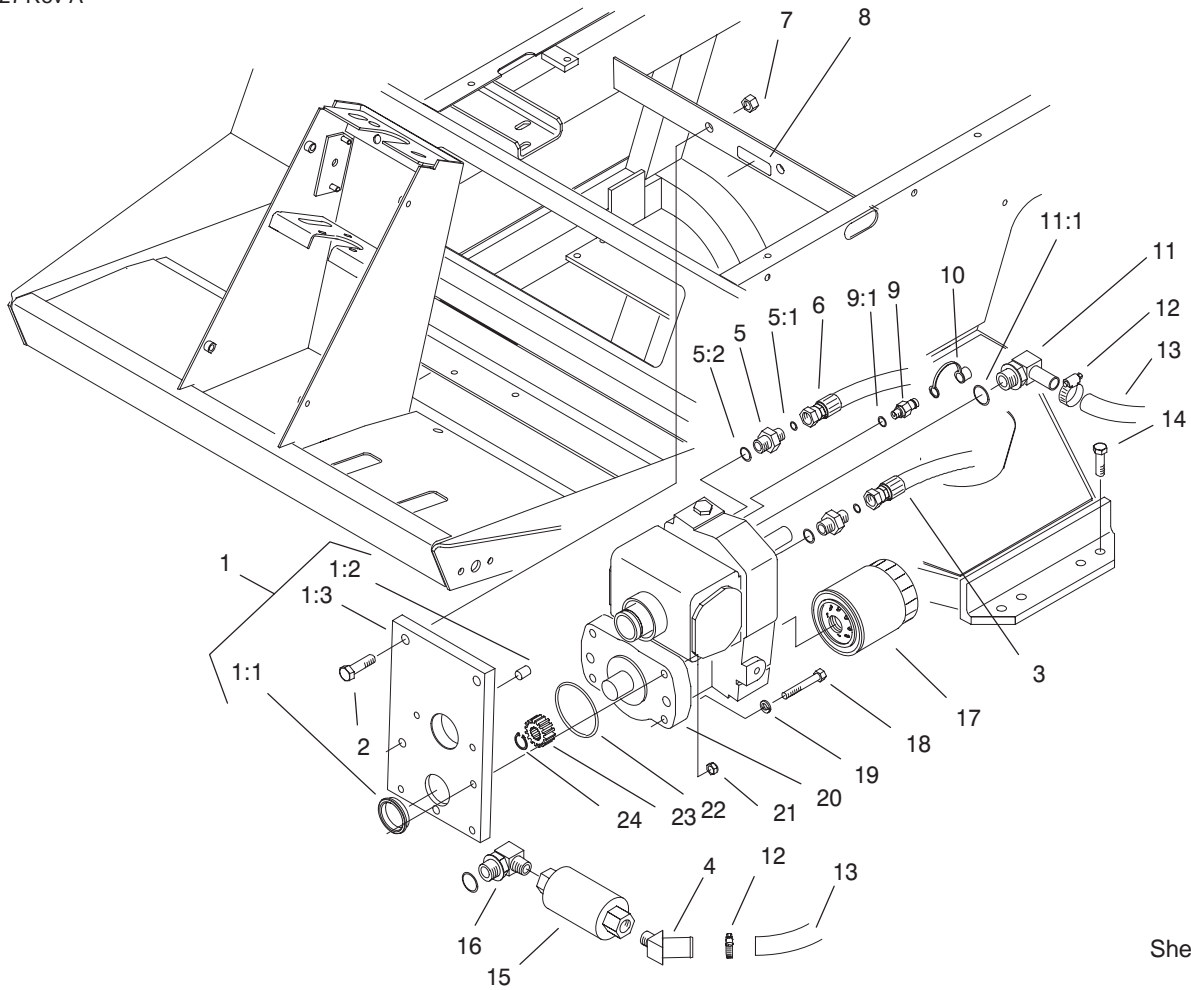
* Not Illustrated.



T-xxxx

Brake Assembly

Ref. No.	Part No.	Qty.	Description	Ref. No.	Part No.	Qty.	Description
1	27-6862	1	Shaft-Axle, Flanged LH	19	24-9180	2	Lever-Brake, Parking
*	27-6852	1	Shaft-Axle Flanged RH	21	94-6934	8	Screw-HSH
2	99-6969	2	Seal-Oil	22	24-8840	2	Ring-Bearing, Wheel
3	21-8180	2	Bearing	23	94-6936	8	Washer-Flat
4	21-9450	2	Shield-Dust	*	84-8600	1	Set of Linked Brake Shoes
5	43-6810	2	Spider-Torque	*	92-8775	1	Kit-Gasket, Liquid
6	21-9390	2	Socket-Screw, Adjusting				
7	21-9370	2	Screw-Adjusting				
8	21-9380	2	Nut-Pivot				
9	242-34	10	Stud-Flange, Axle				
10	21-8360	2	Clip-Retaining				
11	28-0680	2	Drum-Brake				
12	94-6935	8	Nut-Lock				
13	28-0670	2	Seal-Oil				
14	21-9440	2	Spring-Screw, Adjusting				
15	21-9460	4	Retainer-Brake, Parking				
16	84-8590	4	Shoe and Lining ASM				
17	21-9420	2	Spring-Shoe Return, LH				
18	21-9430	2	Spring-Shoe Return, RH				

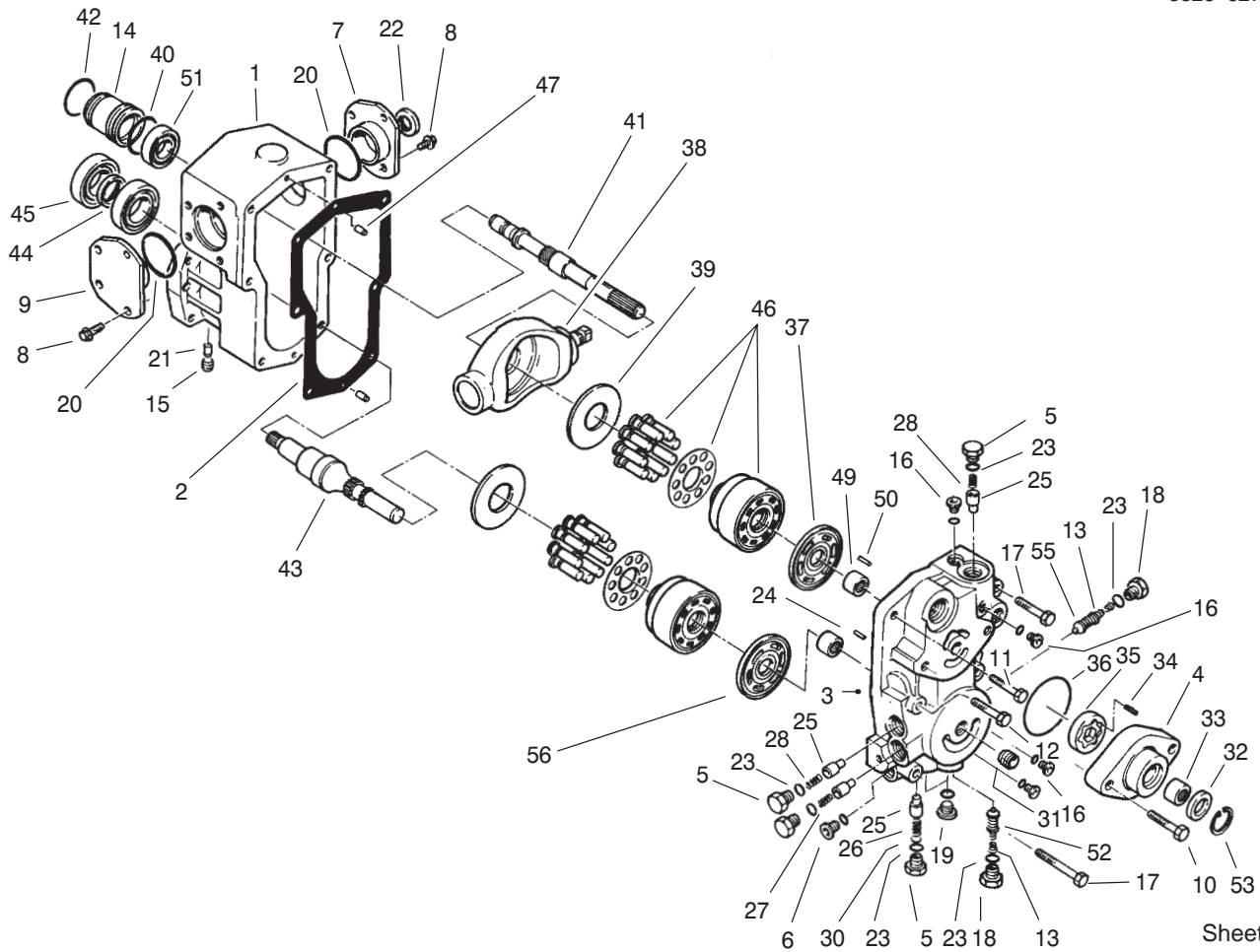


Sheet No.:11
T-3417

Transmission Support And Transmission Assembly

Ref. No.	Part No.	Qty.	Description
1	92-4846	1	Transmission Supt ASM
1:1	75-3110	1	Transmission Collar
1:2	92-4808	1	Sleeve - Trans Pilot
1:3	92-4809	1	Transmission Support
2	325-7	2	Screw-HH
3	93-0075	1	Hose ASM
4	354-72	1	Fitting
5	340-3	2	Adapter
5:1	237-22	1	O-Ring
5:2	237-79	1	O-Ring
6	93-0076	1	Hose ASM
7	3296-23	2	Nut-Lock, NI
8	93-6691	1	Decal-Bolt, Eccentric
9	354-77	1	Fitting-Quick
9:1	237-78	1	O-Ring
10	354-79	1	Cap - Fitting, Yellow
11	75-4720	1	Fitting-Line, Suction
11:1	237-81	1	O-Ring
12	2412-129	2	Clamp-Hose
13	75-6350	1	Hose
14	324-7	4	Screw-HH
15	75-6340-03	1	Filter
16	354-75	1	Fitting
17	75-1330	1	Element-Filter
18	323-12	2	Screw-HH

Ref. No.	Part No.	Qty.	Description
19	3253-21	2	Washer-Lock/Sp
20	75-0012	1	Transmission-Sunstr nd
21	3296-39	2	Nut-Lock, NI
22	237-161	1	O-Ring
23	86-7220	1	Gear-Pinion
24	32151-62	1	Ring-Retaining



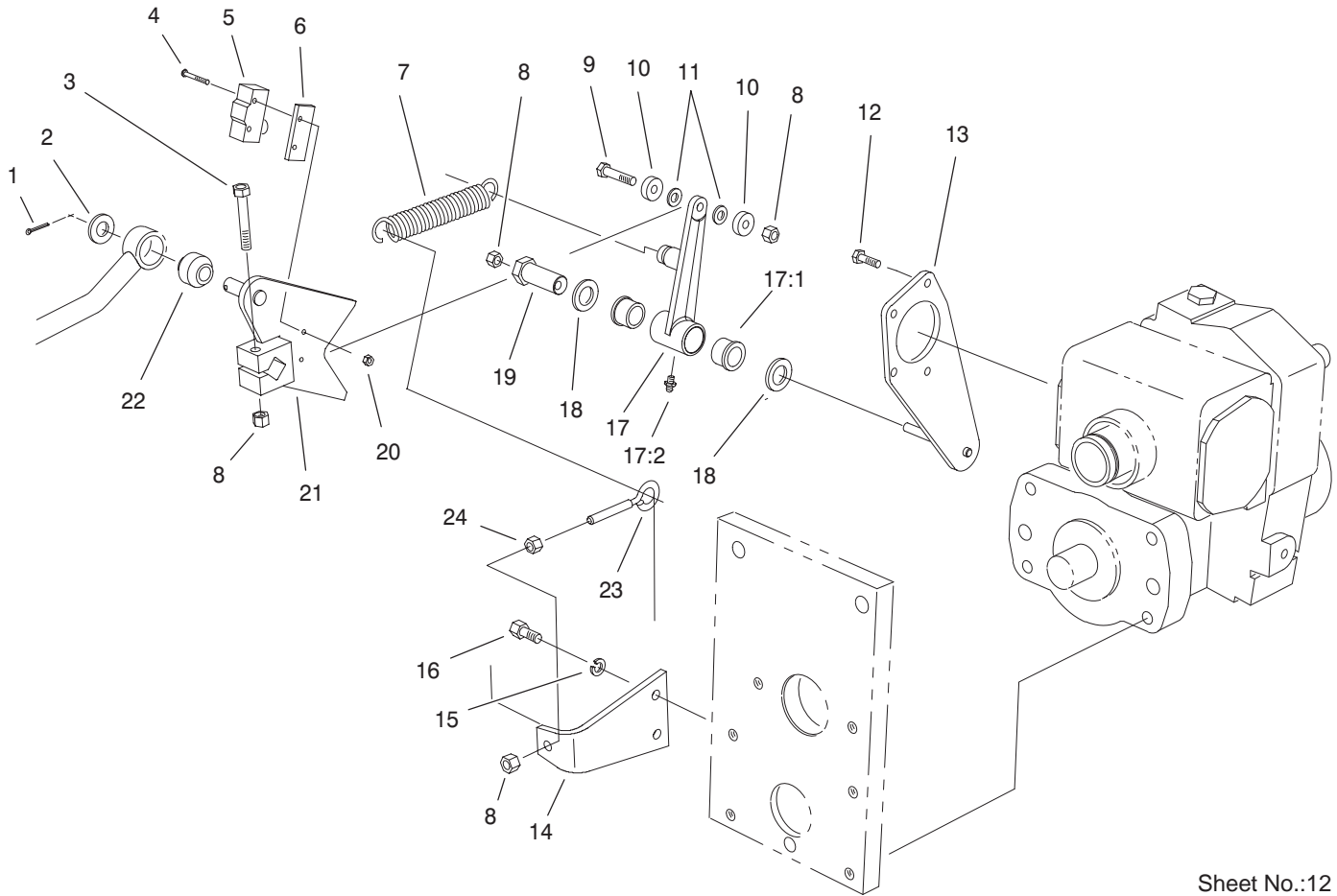
Sheet No.:A4

T-xxxx

Transmission Assembly No. 75-0012

Ref. No.	Part No.	Qty.	Description
1	75-0020	1	Housing
2	75-0030	1	Gasket-Housing
3	75-0040	1	Section-Center
4	83-4780	1	Housing-Pump, Charge
5	75-0060	4	Plug
6	75-0070	1	Plug
7	86-7520	1	RH Trunnion Cover ASM
8	75-0090	8	Capscrew-HH
9	86-7530	1	LH Trunnion Cover ASM
10	75-0110	2	Capscrew-HH
11	75-0120	1	Capscrew-HH
12	75-0130	3	Capscrew-HH
13	75-0140	1	Spring-Conical
14	75-0150	1	Guide-Seal
15	75-0160	1	Plug-Pipe
16	75-0170	4	Plug-Thread, Straight
17	75-0180	2	Capscrew-HH
18	75-0190	2	Plug-Special
19	75-0200	2	Plug-Thread, Straight
20	75-0210	2	O-Ring
21	75-0220	2	Pin
22	75-0230	1	Seal-Lip
23	75-0240	6	O-Ring

Ref. No.	Part No.	Qty.	Description
24	75-0250	1	Spring
25	75-0260	4	Valve - Relief
26	75-0270	1	Spring
27	75-0280	1	Spring
28	75-0290	2	Spring
30	75-0310	1	Shim
31	75-0320	1	Nipple
32	75-0330	1	Seal-Lip
33	75-0340	1	Bearing-Needle
34	75-0350	1	Pin
35	75-0360	1	Gerotor
36	75-0370	1	O-Ring
37	75-0380	1	Plate-Valve
38	75-0390	1	Plate-Swash
39	75-0400	2	Plate-Thrust
40	75-0410	1	O-Ring
41	86-7540	1	Shaft-Pump
42	75-0430	1	Ring-Retaining
43	75-0440	1	Shaft-Motor
44	75-0450	1	Collar
45	75-0460	2	Bearing-Ball
46	75-0470	2	Kit-Block, Cylinder
47	75-0480	2	Pin
49	75-0500	2	Bearing-Needle
50	75-0510	1	Pin
51	75-0520	1	Bearing-Ball

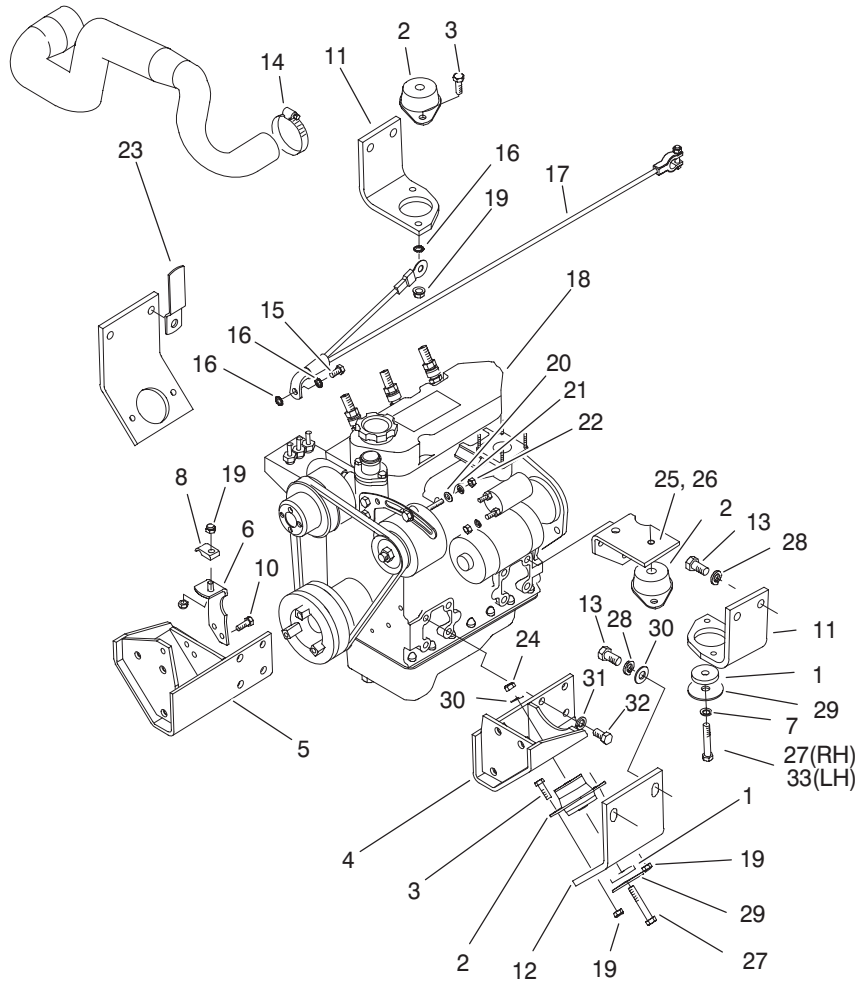


Sheet No.:12
T-3418

Traction Control Assembly

Ref. No.	Part No.	Qty.	Description
1	3272-10	1	Pin-Cotter
2	3256-26	1	Washer-Flat
3	322-10	1	Screw-HH
4	32105-21	2	Screw-Machine, HH
5	29-6162	1	Switch-Micro
6	75-4130	1	Plate-Switch
7	76-9430-03	1	Spring-Ext.
8	3296-29	4	Nut-Lock,NI
9	322-7	1	Screw-HH
10	251-307	2	Bearing-Ball
11	75-5470	2	Spacer-Bearing
12	32144-22	4	Screw
13	75-4080-03	1	Plate-Traction
14	85-9900-03	1	Plate-Anchor, Spring
15	3253-4	2	Washer
16	322-3	2	Screw-HH
17	92-2581	1	Neutral Switch Arm ASM
17:1	256-113	2	Bushing-Flange
17:2	302-5	1	Fitting-Lube
18	3-6498	2	Washer-Thrust
19	76-8640	1	Stud - Traction
20	3296-9	2	Nut-Lock NI
21	75-4100-03	1	Control-Pump
22	23-2270	1	Bushing-Rubber

Ref. No.	Part No.	Qty.	Description
23	85-9910	1	Eyebolt
24	3217-6	1	Nut-Hex

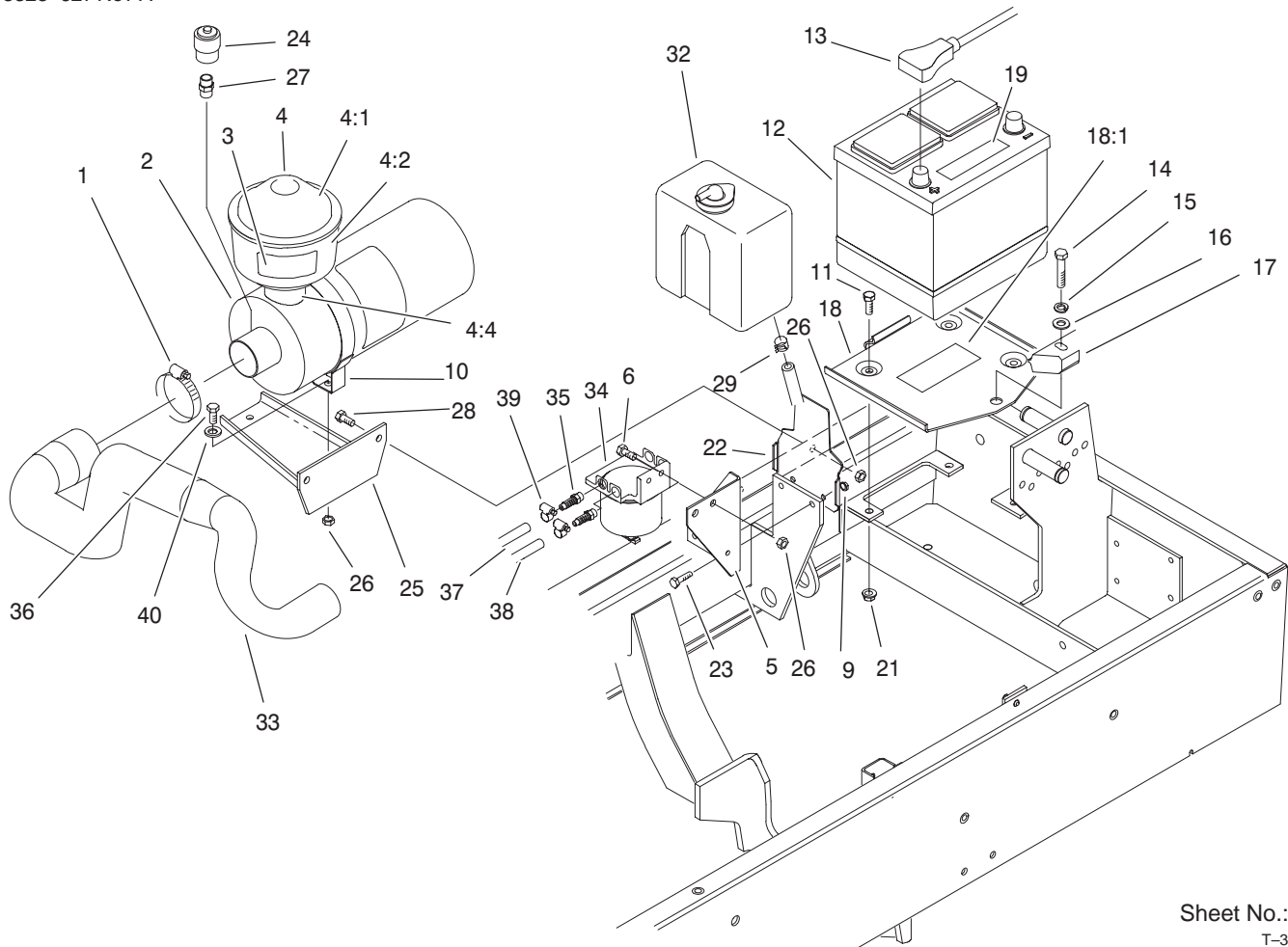


Sheet No.:14
T-3420

Engine Installation Assembly

Ref. No.	Part No.	Qty.	Description
1	83-1050	4	Spacer
2	83-1030	4	Mount-Engine
3	322-6	8	Screw-HH
4	98-4539-03	1	Bracket-Eng Mt, LH
5	98-4543-03	1	Bracket-Eng Mt, RH
6	98-9749	1	Plate - Throttle, Welded
7	3253-21	1	Washer-Lock/Sp
8	3-6657	1	Clip-Skid
10	322-4	2	Screw-HH
11	98-4513-03	2	Brkt - Engine, Rear
12	93-0095-03	2	Bracket-Engine, Front
13	3213-2	8	Screw-HH
14	2412-92	1	Clamp-Hose
15	98-9322	1	Bolt-HH, Metric
16	3255-9	2	Washer-Lock/Ext
17	98-4598	1	Cable-Battery, Negative
18	99-8980	1	Engine-Kubota, N/A
19	3296-29	15	Nut-Lock,NI
20	3256-78	1	Washer-Flat
21	43-5930	1	Washer-Spring
22	48-7890	1	Nut
23	98-4594-01	1	Clamp - Retainer
24	32128-36	3	Nut-HF

Ref. No.	Part No.	Qty.	Description
25	98-4515-03	1	Bracket-Rear Engine, LH
26	98-4514-03	1	Bracket-Rear Engine, RH
27	323-12	3	Screw-HH
28	3253-7	8	Washer-Lock/Sp
29	87-5100	4	Washer - Snubbing
30	3256-40	4	Washer-Flat
31	43-0090	14	Bolt/Washer
32	42-9600	14	Lockwasher-Spring, Mid
33	323-10	1	Screw-HH



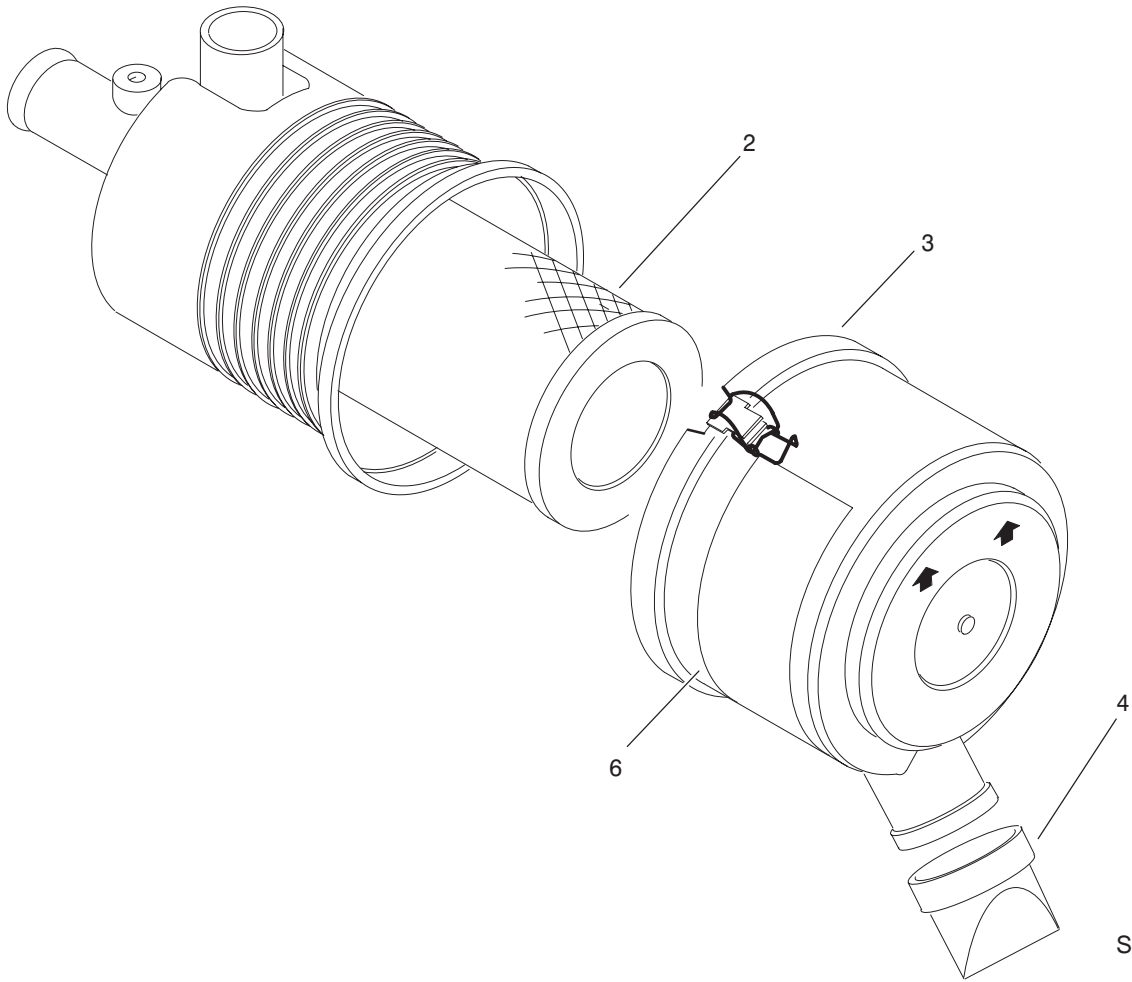
Sheet No.:16
T-3422

Engine Components Assembly

Ref. No.	Part No.	Qty.	Description
1	2412-42	1	Clamp-Hose
2	98-4517	1	Air Cleaner ASM
3	93-6692	1	Decal-Fluid, Starting
4	48-7430	1	Precleaner
4:1	33-1260	1	Cover ASM
4:2	33-1270	1	Bowl-Clear
*4:3	62-6300	1	Sleeve ASM
4:4	94-6873	1	Clamp
5	98-4578-03	1	Bracket-Filter, Fuel
6	3234-29	2	Screw-HHF
9	32128-33	2	Nut-HF
10	98-4525	1	Bracket-Cleaner, Air
11	322-4	3	Screw-HH
12	66-2750	1	Battery
13	98-4599	1	Cable - Battery
14	323-9	1	Screw-HH
15	3253-21	1	Washer-Lock/Sp
16	3256-24	1	Washer-Flat
17	66-2490	1	Retainer-Battery
18	94-7343	1	Base-Battery
18:1	93-7276	1	Decal - Danger
19	93-6668	1	Decal - Battery
21	32128-20	3	Nut-HF
22	98-4576-03	1	Bracket-Reservoir, Water

Ref. No.	Part No.	Qty.	Description
23	321-5	2	Screw-HH
24	93-9164	1	Indicator - Mini
25	98-4518-03	1	Bracket-Cleaner, Air
26	3296-29	8	Nut-Lock,NI
27	94-1416	1	Indicator Adapter ASM
28	322-5	2	Screw-HH
29	92-2379	1	Clamp-Hose
*30	3290-378	1	Tie-Cable
31	3290-379	2	Tie-Cable
32	98-9323	1	Bottle-Overflow, Water
33	98-4510	1	Hose-Cleaner, Air
34	98-9305	1	Filter-Water/Fuel
35	353-783	2	Fitting-Pump
36	322-6	2	Screw-HH
37	71-3381	1	Hose-Fuel
38	95-4275	1	Hose - Fuel
39	2412-108	4	Clamp-Worm
40	3256-23	2	Washer-Flat

* Not illustrated

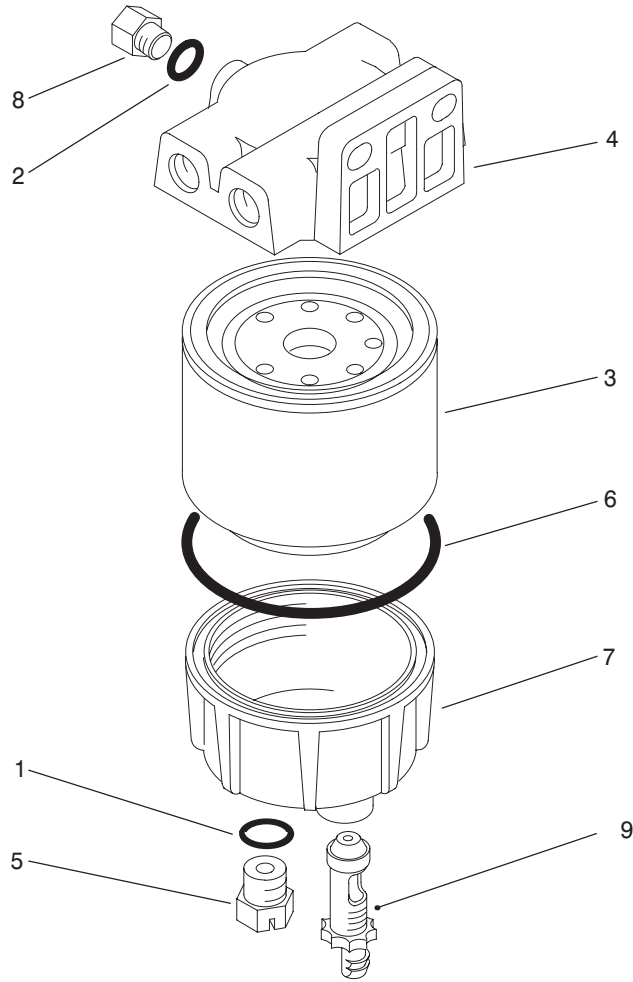


Sheet No.:A6
T-xxxx

Air Cleaner Assembly No. 98-4517

Ref. No.	Part No.	Qty.	Description
2	98-9763	1	Element - ASM
3	98-9771	1	Cover - ASM
4	94-1414	1	Valve - Vacuator
6	98-9788	1	Decal - Instruction

Ref. No.	Part No.	Qty.	Description

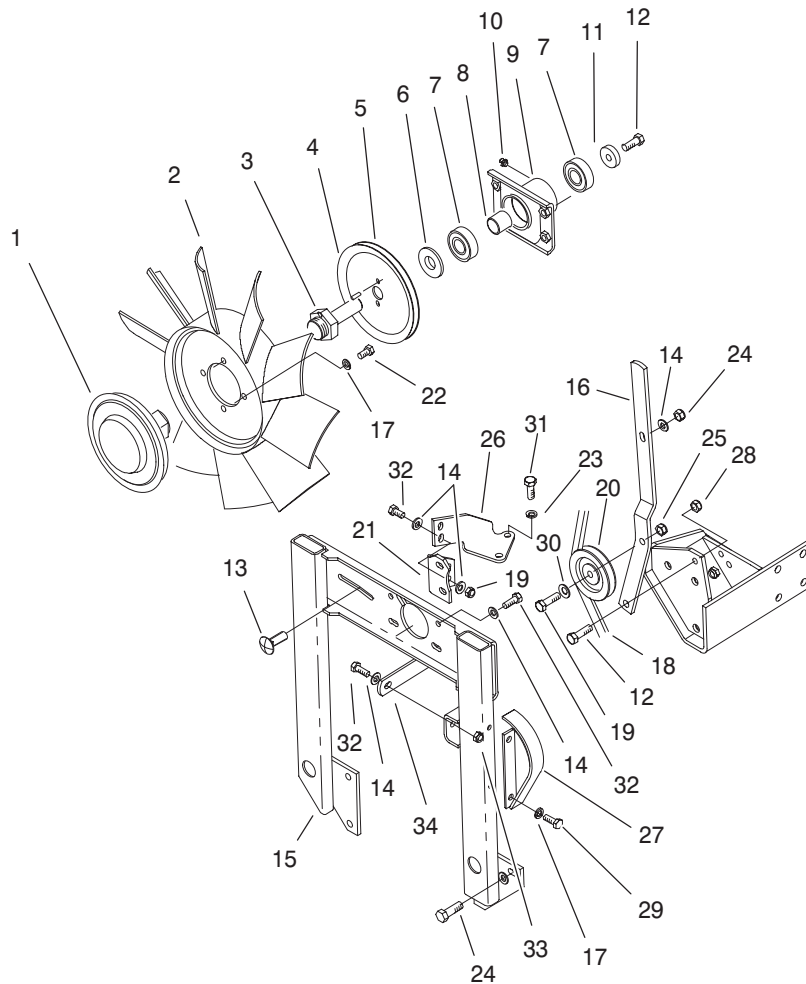


Sheet No.:A7
T-xxxx

Water/Fuel Separator Assembly No. 98-9305

Ref. No.	Part No.	Qty.	Description
1	237-42	1	O-Ring
2	237-78	1	O-Ring
3	98-9764	1	Element-On, Spin
4	98-9772	1	Head - Filter
5	98-9773	1	Plug - Base, Filter
6	98-9774	1	O-Ring-Base, Filter
7	98-9775	1	Base - Filter
8	98-9776	1	Plug-Filter, Head
9	98-9777	1	Drain Valve ASM

Ref. No.	Part No.	Qty.	Description

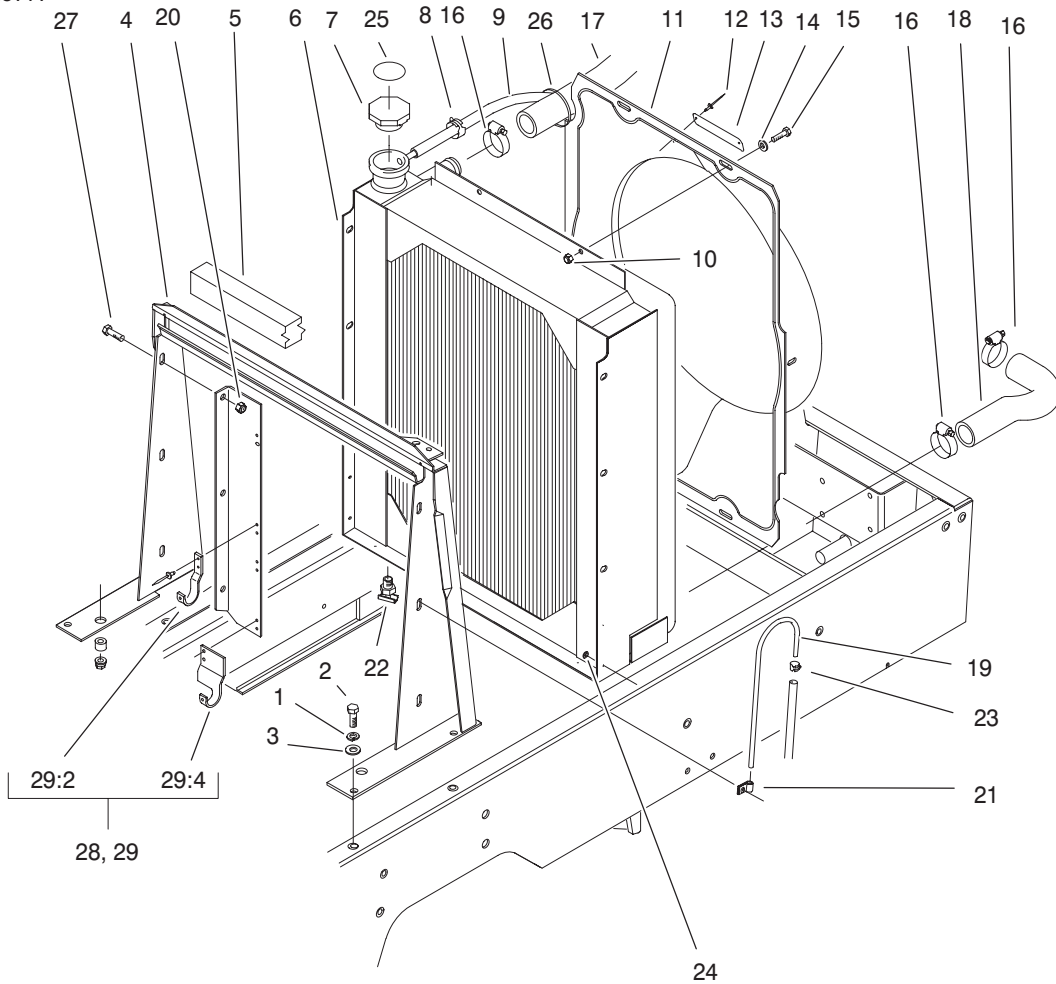


Sheet No.:17
T-3423

Engine Fan And Clutch Installation Assembly

Ref. No.	Part No.	Qty.	Description
1	74-5520	1	Clutch-Fan
2	75-3780	1	Fan-Engine
3	75-6380	1	Shaft - Fan
4	32121-2	2	Pin-Roll
5	98-9313	1	Pulley-Fan
6	47-0110	1	Spacer-Spindle
7	251-318	2	Bearing
8	75-5310	1	Spacer - Bearing
9	75-4450-03	1	Hub
10	302-10	1	Zerk
11	67-1630	1	Spacer
12	323-6	2	Screw-HH
13	3230-2	1	Screw-CARR
14	3256-23	9	Washer-Flat
15	98-4530-03	1	Support-Fan
16	98-4575-03	1	Lever-Idler, Fan
17	3253-4	6	Washer
18	98-9312	1	V-Belt
19	323-8	1	Screw-HH
20	63-8140	1	Pulley-Idler
21	98-9740	1	Bracket - Fan, Support
22	322-2	4	Screw-HH
23	42-9850	2	Washer-Lock, Spring
24	3234-29	6	Screw-HHF
25	3296-59	1	Nut-Lock, NI

Ref. No.	Part No.	Qty.	Description
26	98-9741	1	Bracket - Mount, Fan
27	98-4561-03	1	Shield-Alt
28	3296-39	1	Nut-Lock, NI
29	32144-14	2	Screw-HWH
30	3256-24	1	Washer-Flat
31	33114-016	2	Screw-HH
32	322-4	7	Screw-HH
33	3296-29	5	Nut-Lock, NI
34	98-4547	1	Plate-Mount, Fan



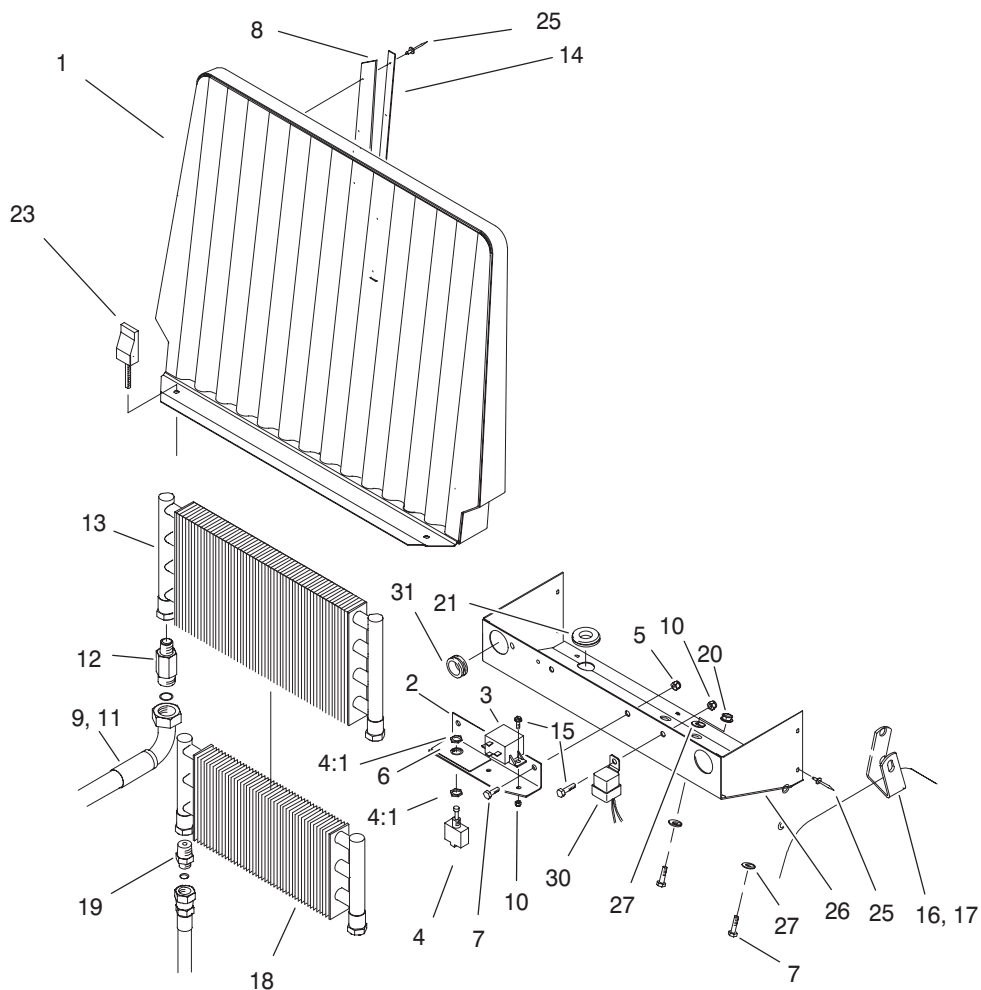
Sheet No.:18
T-3424

Radiator Frame Assembly

Ref. No.	Part No.	Qty.	Description
1	3253-4	4	Washer
2	322-5	4	Screw-HH
3	3256-23	4	Washer-Flat
4	98-9317-03	1	Support-Radiator
5	93-0005	1	Strip-Foam, Radiator Top
6	98-4507	1	Radiator
7	66-3240	1	Cap-Radiator
8	92-2379	1	Clamp-Hose
9	75-2851	1	Hose - Expansion Tank
10	3296-42	4	Nut-Lock
11	98-4571	1	Shroud - Fan
12	3290-271	2	Rivet-Pop
13	98-9335	1	Plate-Warning, Fan
14	3256-22	4	Washer-Flat
15	321-4	4	Screw-HH
16	2412-34	4	Clamp-Hose
17	98-4511	1	Hose-Radiator, Upper
18	98-4512	1	Hose-Radiator, Lower
19	66-3180	1	Tube-Vent
20	32128-20	6	Nut-HF
21	2412-103	2	Clamp
22	304-46	1	Draincock
23	2412-98	1	Clamp
24	3269-10	5	Washer-Back

Ref. No.	Part No.	Qty.	Description
25	93-7840	1	Decal-Cap, Radiator
26	3290-378	1	Tie-Cable
27	3234-5	6	Screw-HHF
28	93-0071	1	LH Cooler Mount ASM
*28:2	75-0930	2	Hook - Cooler Mount
*28:4	93-0089	2	Bracket - Cooler Mount,LH
29	93-0030	1	RH Cooler Mount ASM
29:2	75-0930	2	Hook - Cooler Mount
29:4	93-0090	2	Bracket - Cooler Mount,RH

* Not illustrated



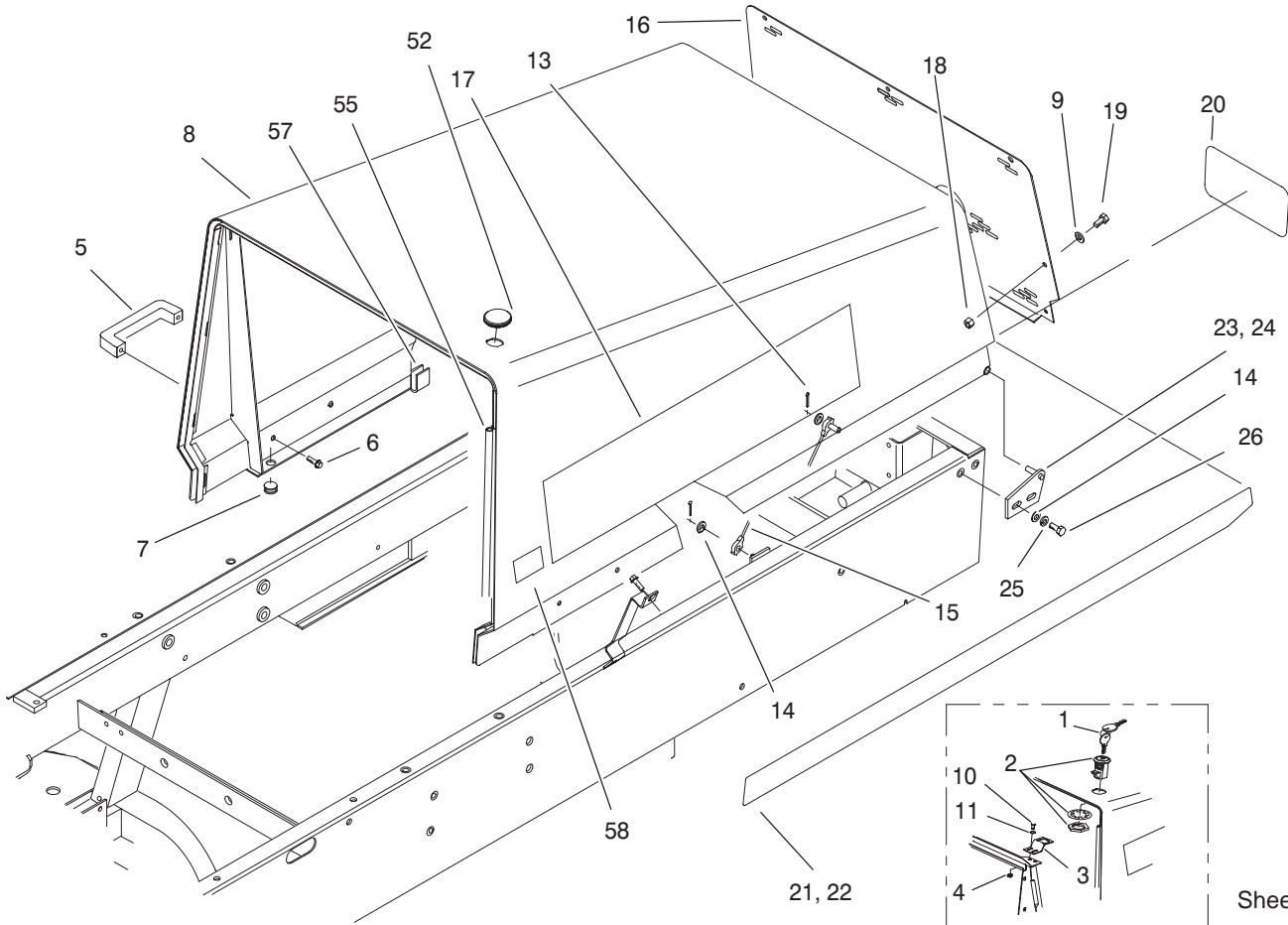
Sheet No.: 19
T-3425

Oil Cooler Assembly

Ref. No.	Part No.	Qty.	Description
1	93-0032-03	1	Housing-Screen, Front
2	75-3390-03	1	Bracket-Backlap
3	66-8800	1	Relay
4	99-8352	1	Switch - Backlap
4:1	218-498	2	Locknut-Hex
*4:2	218-588	3	Screw F/W
*4:3	218-589	1	Washer F/W
*4:4	3253-19	3	Washer-Lock/Sp
5	3296-29	2	Nut-Lock,NI
6	93-6684	1	Decal - Backlap
7	322-2	4	Screw-HH
8	93-3623	2	Strip-Sealing, Radiator
9	93-0077	1	Hose ASM
10	3296-42	3	Nut-Lock
11	93-0078	1	Hose ASM
12	92-4999	2	Fitting
13	75-1040	1	Cooler-Oil
14	93-3624-03	2	Plate- Retaining
15	321-4	3	Screw-HH
16	98-4591	1	Clamp - Hose, LH
17	98-4592	1	Clamp - Hose, RH
18	24-0760	1	Cooler ASM
19	340-124	2	Adapter
20	32128-20	2	Nut-HF

Ref. No.	Part No.	Qty.	Description
21	100-3815	2	Grommet-Rubber
*22	218-498	2	Locknut-Hex
23	93-1374	2	Latch - Swell
*24	218-588	3	Screw F/W
25	3269-13	15	Rivet-Pop
26	93-0025-03	1	Shield-Radiator
27	3256-2	4	Washer-Flat
*28	218-589	1	Washer F/W
*29	3253-19	3	Washer-Lock/Sp
30	63-7590	1	Relay-Spdt
31	240-3	2	Grommet-Rubber

* Not illustrated



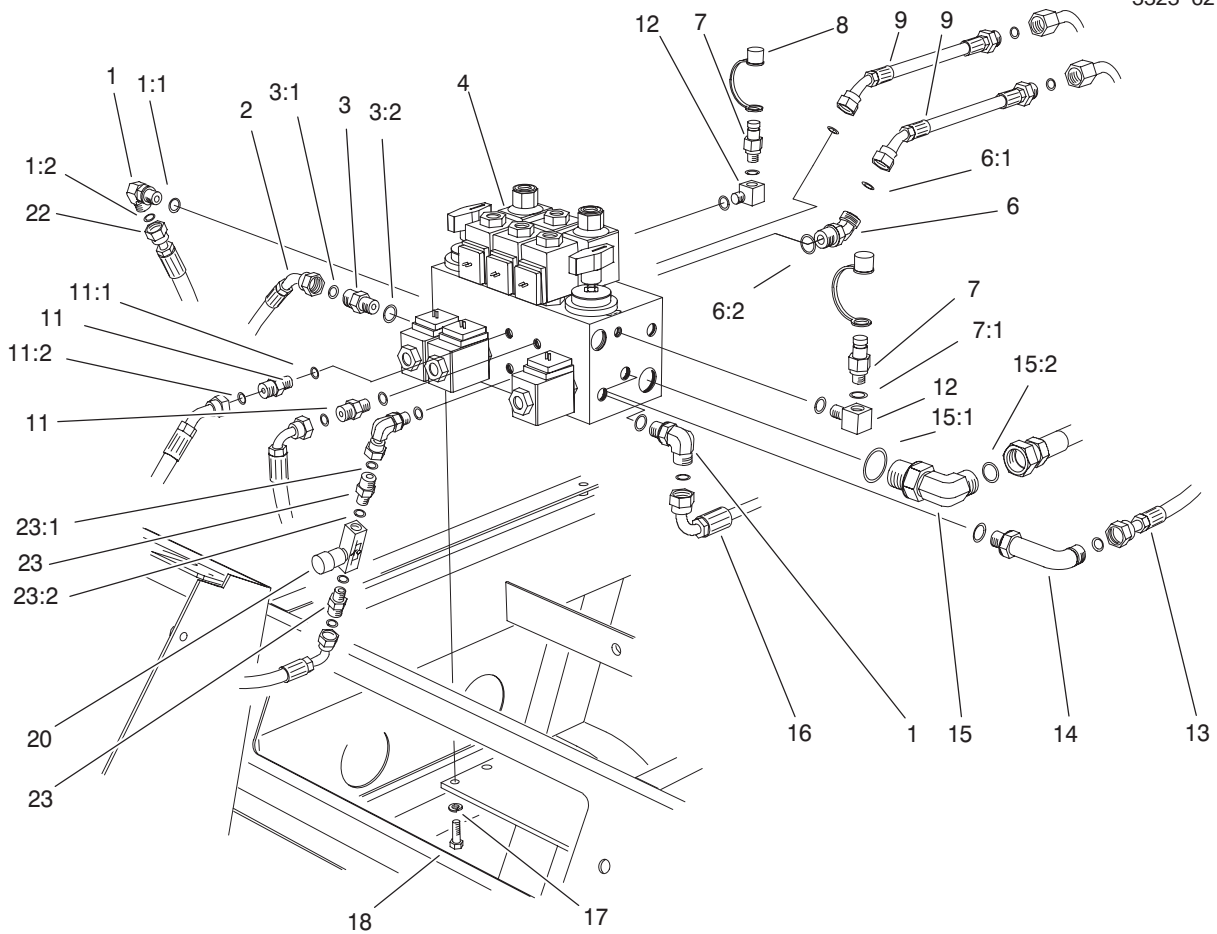
Sheet No.:20
T-3426

Frame And Body Assembly

Ref. No.	Part No.	Qty.	Description
1	98-9321	1	Ring-Key
2	98-9315	1	Latch - Locking
3	98-9316	1	Latch - Hood
4	3296-16	2	Nut-Lock, NI
5	65-5100	2	Handle-Door
6	46-8091	4	Special-HWH
7	237-141	2	Grommet-Rubber
8	98-9746	1	Hood & Carton ASM
9	3256-1	7	Washer-Flat
10	321-4	2	Screw-HH
11	3256-1	2	Washer-Flat
13	3272-4	2	Pin-Cotter
14	3256-23	6	Washer-Flat
15	75-0570	1	Cable - Hood
16	98-4573-03	1	Screen - Hood, Rear
17	98-4521	2	Decal - Hood
18	3296-42	7	Nut-Lock
19	321-39	7	Screw-HH
20	62-7400	1	Decal-Toro
21	92-5751	1	Decal - Hood, LH
22	92-5752	1	Decal - Hood, RH
23	63-6900-01	1	Plate-Hood Hinge, LH
24	63-6890-01	1	Plate-Hood Hinge, RH
25	3253-4	4	Washer
26	322-5	4	Screw-HH
52	98-9314	1	Grommet

Ref. No.	Part No.	Qty.	Description
55	93-0081	1	Strip-Seal
57	99-8975	1	Strip-Seal
58	93-7252	1	Decal, Int'l

* Not illustrated



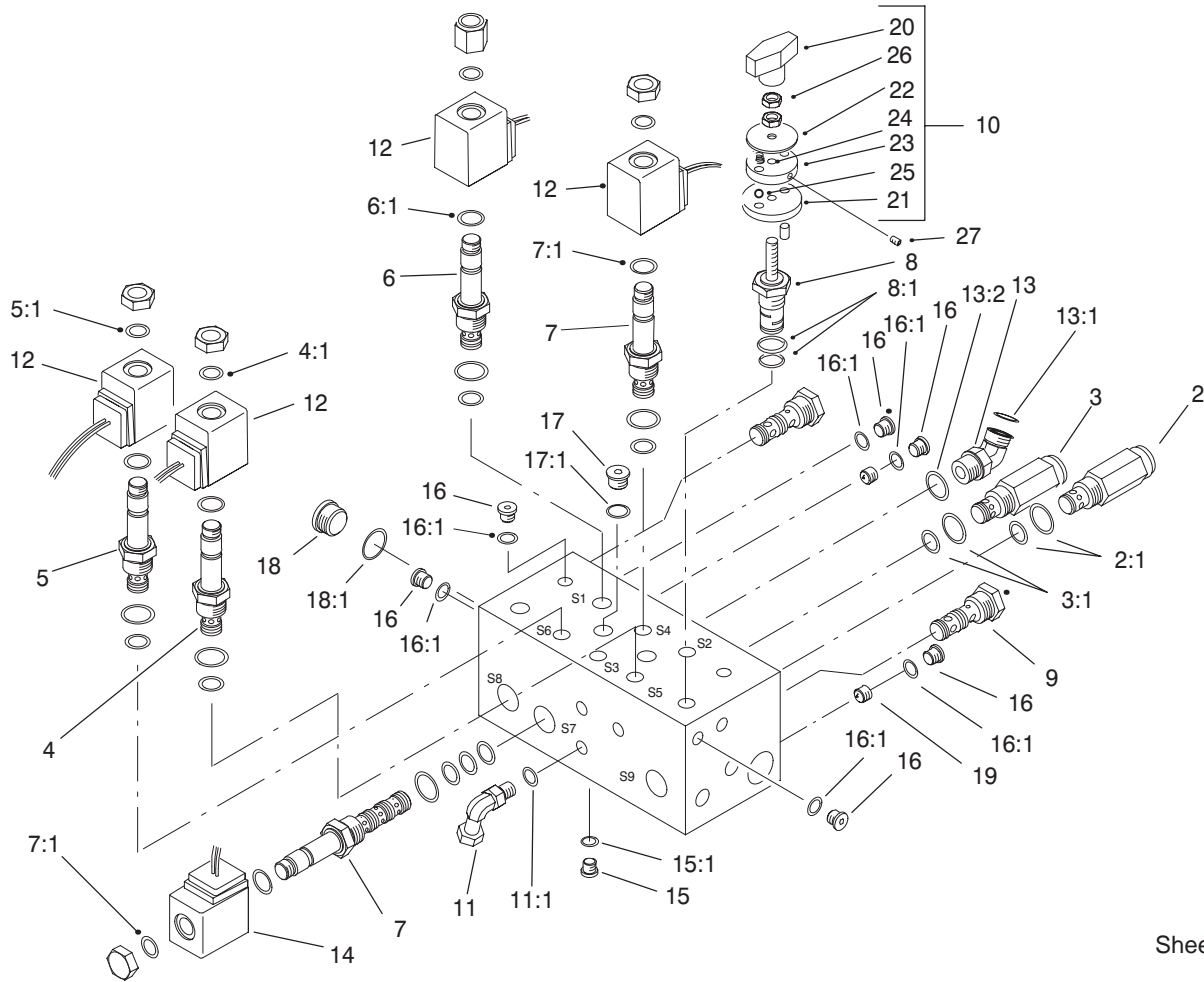
Sheet No.:21
T-3427

Hydraulic Control Block And Hoses Assembly

Ref. No.	Part No.	Qty.	Description
1	340-98	2	Fitting-90°
1:1	237-79	2	O-Ring
1:2	237-30	2	O-Ring
2	99-5639	1	Hydraulic Hose ASM
3	340-4	1	Adapter
3:1	237-30	1	O-Ring
3:2	237-79	1	O-Ring
4	98-4579	1	Hydraulic Manifold ASM
6	340-101	1	Fitting
6:1	237-30	1	O-Ring
6:2	237-79	1	O-Ring
7	354-77	2	Fitting-Quick
7:1	237-78	2	O-Ring
8	354-79	2	Cap - Fitting, Yellow
9	86-9190	2	Hose
11	340-92	2	Fitting
11:1	237-78	1	O-Ring
11:2	237-21	1	O-Ring
12	75-6640	2	Fitting - Special
13	98-9348	1	Hydraulic Hose ASM
14	98-9781	1	Fitting - 90°, Orfs
15	340-139	1	Fitting-90°
15:1	237-81	1	O-Ring
15:2	237-65	1	O-Ring
16	98-9347	1	Hydraulic Hose ASM

Ref. No.	Part No.	Qty.	Description
17	3253-4	4	Washer
18	322-3	4	Screw-HH
20	98-9742	1	Valve-Control, Flow
22	99-5638	1	Hydraulic Hose ASM
23	340-1	2	Adapter
23:1	237-35	1	O-Ring
23:2	237-42	1	O-Ring
*24	3290-378	1	Tie-Cable

* Not illustrated



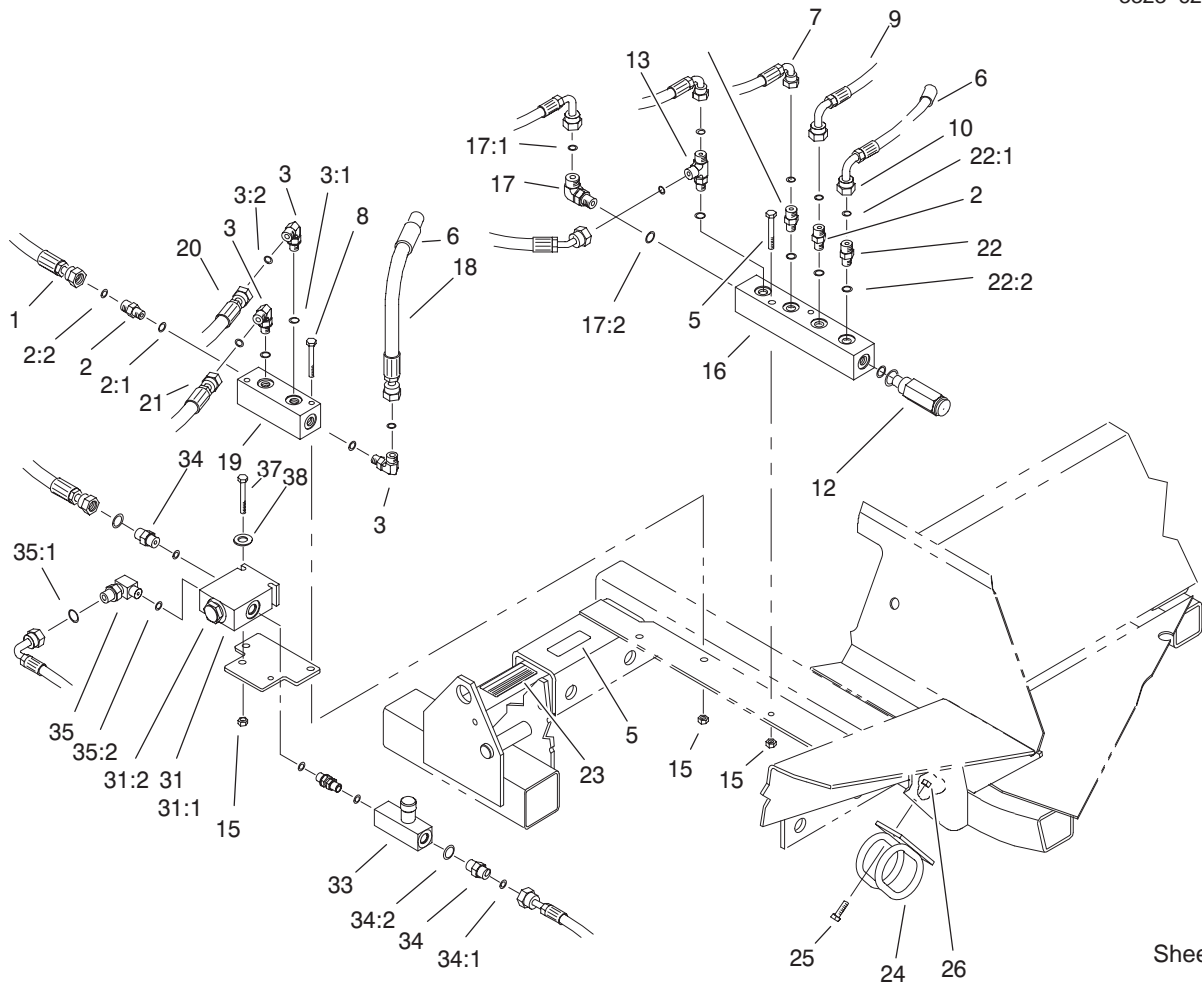
Sheet No.:A8
T-1503-3

Hydraulic Manifold Assembly No. 98-4579

Ref. No.	Part No.	Qty.	Description
1	98-9790	1	Body – Manifold
2	75-2010	1	Cartridge – Relief Da
3	75-0920	1	Cartridge – Relief Da
4	94-2685	3	Cartridge – N.c. Spool
5	92-6315	1	Cartridge–N.c. Poppet
6	88-7020	2	Cartridge–N.o.(Spool)
7	88-6960	3	Cartridge–4w/2p
8	98-9779	2	Cartridge – Flow
9	69-4120	2	Logic Cartridge
10	94-3660	1	Detent Kit
11	340-143	1	Elbow – 90° Swivel
12	88-9190	6	Solenoid Coil Kit–20
13	340-101	1	Fitting
13:1	237-30	1	O-Ring
13:2	237-79	1	O-Ring
14	88-9200	3	Solenoid Coil Kit–28
15	353-991	10	Plug–Hollow Hex
15:1	237-156	1	O-Ring
16	353-990	15	Sae – 4 Plug
17	353-989	1	Plug–Hollow Hex, Sae-6
*17:1	237-42	1	O-Ring
18	354-70	1	Plug – Hollow Hex
18:1	237-79	1	O-Ring
19	98-9791	2	Plug – Orifice

Ref. No.	Part No.	Qty.	Description
20	94-5020	1	Knob ASM
21	94-5025	1	Plate – Locating
22	94-5026	1	Plate – Indicator
23	94-5023	1	Plate – Detent
24	94-5027	2	Spring
25	255-13	2	Ball – Stainless Steel
26	3218-1	2	Nut–Jam
27	75-6790	1	Screw – Set

* Not illustrated



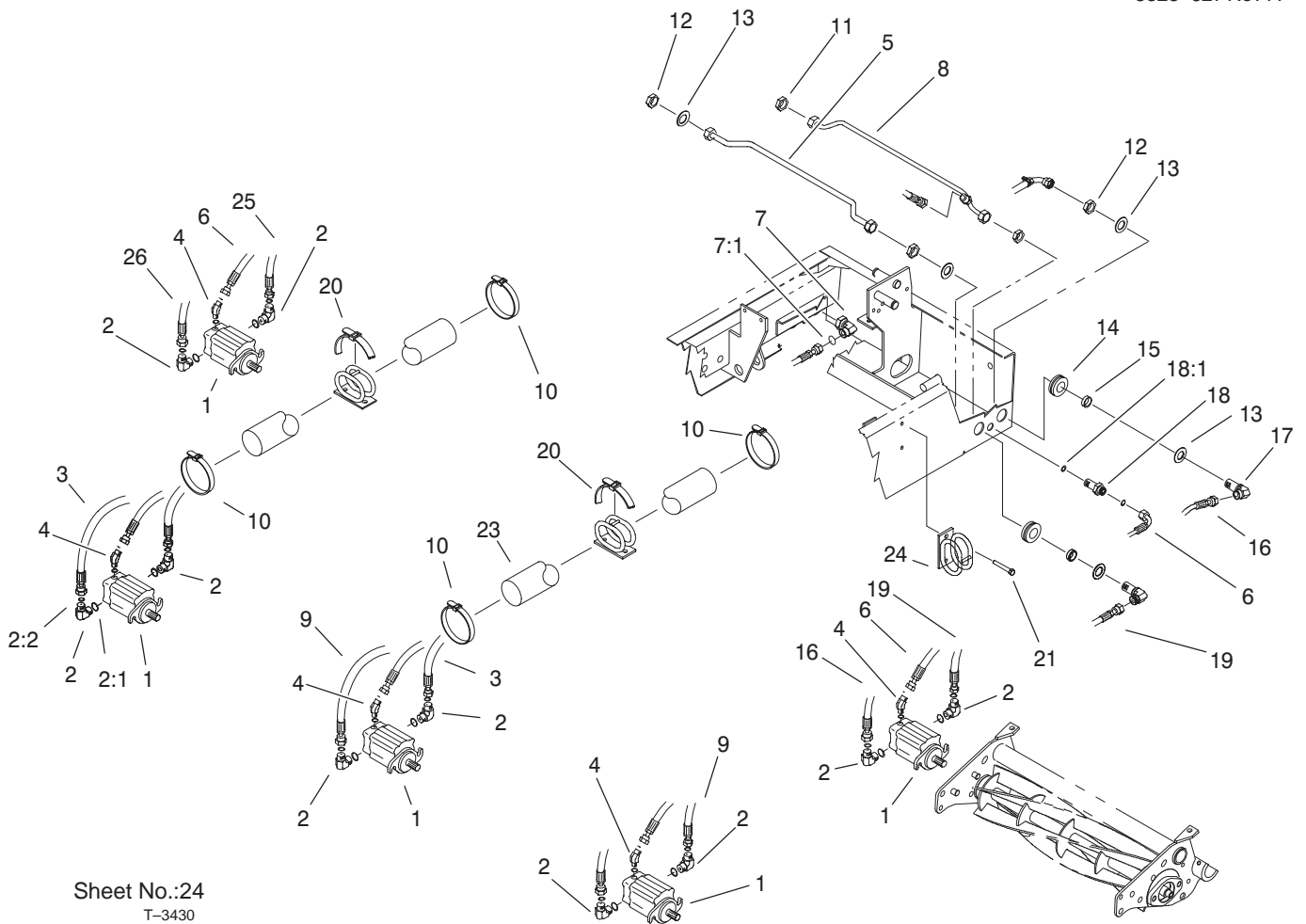
Sheet No.:22
T-3428

Front Hydraulic Manifold Assembly

Ref. No.	Part No.	Qty.	Description
1	98-4584	1	Hydraulic Hose ASM
2	340-92	3	Fitting
2:1	237-78	1	O-Ring
2:2	237-21	1	O-Ring
3	340-132	3	Elbow-90°
3:1	237-78	1	O-Ring
3:2	237-21	1	O-Ring
5	93-6686	1	Decal-Oil, Hydraulic
6	38-3400	2	Guard-Rubber
7	75-5910	1	Hose
8	321-18	4	Screw-HH
9	93-0118	1	Hose ASM
10	93-0119	1	Hose ASM
11	99-5643	1	Hose-Hydraulic
12	93-0143	1	Cartridge-Relief, P.o.
13	340-140	1	Adapter Tee
15	3296-42	6	Nut-Lock
16	93-0139	1	Block-Manifold, 6 Port
17	340-77	1	Fitting-Hyd. 90°
17:1	237-22	1	O-Ring
17:2	237-42	1	O-Ring
18	92-9096	1	Hose
19	75-1180	1	Block-Manifold, 4 Port
20	98-4587	1	Hydraulic Hose ASM
21	98-4590	1	Hydraulic Hose ASM
22	340-2	2	Adapter

Ref. No.	Part No.	Qty.	Description
22:1	237-22	1	O-Ring
22:2	237-42	1	O-Ring
23	93-6693	1	Decal-Plate, Floor
24	99-5621	2	Guide-Hose
25	322-5	4	Screw-HH
26	3296-29	4	Nut-Lock, NI
30	99-5640	1	Plate-Mounting
31	99-6998	1	Divider-Flow
31:1	99-5645	1	Body
31:2	99-5646	1	Cartridge
*31:3	353-989	1	Plug-Hollow Hex, Sae-6
*31:3:1	237-42	1	O-Ring
*31:4	99-5647	1	Seal Kit
32	99-5644	1	Fitting-Sae
33	98-9742	1	Valve-Control, Flow
34	340-1	2	Adapter
34:1	237-35	1	O-Ring
34:2	237-42	1	O-Ring
35	340-82	1	Adapter
35:1	237-42	1	O-Ring
35:2	237-35	1	O-Ring
37	321-11	2	Screw-HH
38	3256-2	2	Washer-Flat

* Not illustrated

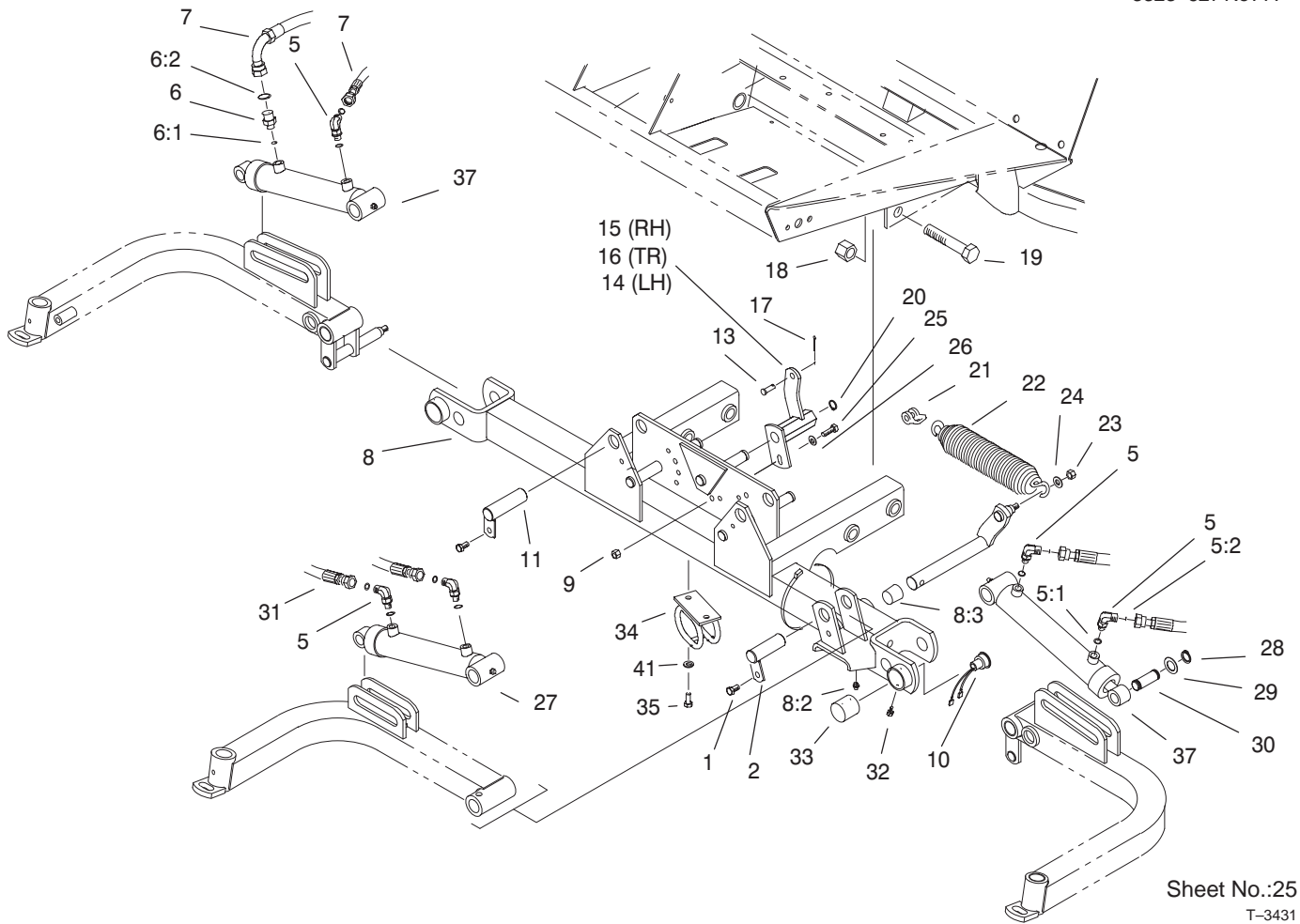


Sheet No.:24
T-3430

Reel Motors Assembly

Ref. No.	Part No.	Qty.	Description
1	93-1375	5	Motor-Reel
2	340-98	10	Fitting-90°
2:1	237-79	2	O-Ring
2:2	237-30	2	O-Ring
3	99-5633	1	Hydraulic Hose ASM
4	340-103	5	Fitting
5	94-4918	1	Press #2 & #3 Tube ASM
6	98-4583	2	Hydraulic Hose ASM
7	94-6031	1	Fitting-Hyd
7:1	237-30	1	O-Ring
8	94-4917	1	Drain #2 & #3 Tube ASM
9	99-5632	1	Hydraulic Hose ASM
10	3290-378	14	Tie-Cable
11	340-70	2	Locknut-Bulkhead
12	340-127	4	Nut-Bulkhead
13	69-8930	8	Washer
14	240-5	4	Grommet
15	69-8960	4	Spacer
16	99-5634	1	Hydraulic Hose ASM
17	93-9151	4	Fitting-Hyd
18	340-71	2	Fitting-Straight, Bulkhead
18:1	237-22	2	O-Ring
19	99-5635	1	Hydraulic Hose ASM

Ref. No.	Part No.	Qty.	Description
20	3334-945	2	Cable Tie
21	32104-32	4	Screw-HH
23	99-5617	1	Sleeve - Protection
24	99-5621	2	Guide-Hose
25	99-5637	1	Hydraulic Hose ASM
26	99-5636	1	Hydraulic Hose ASM



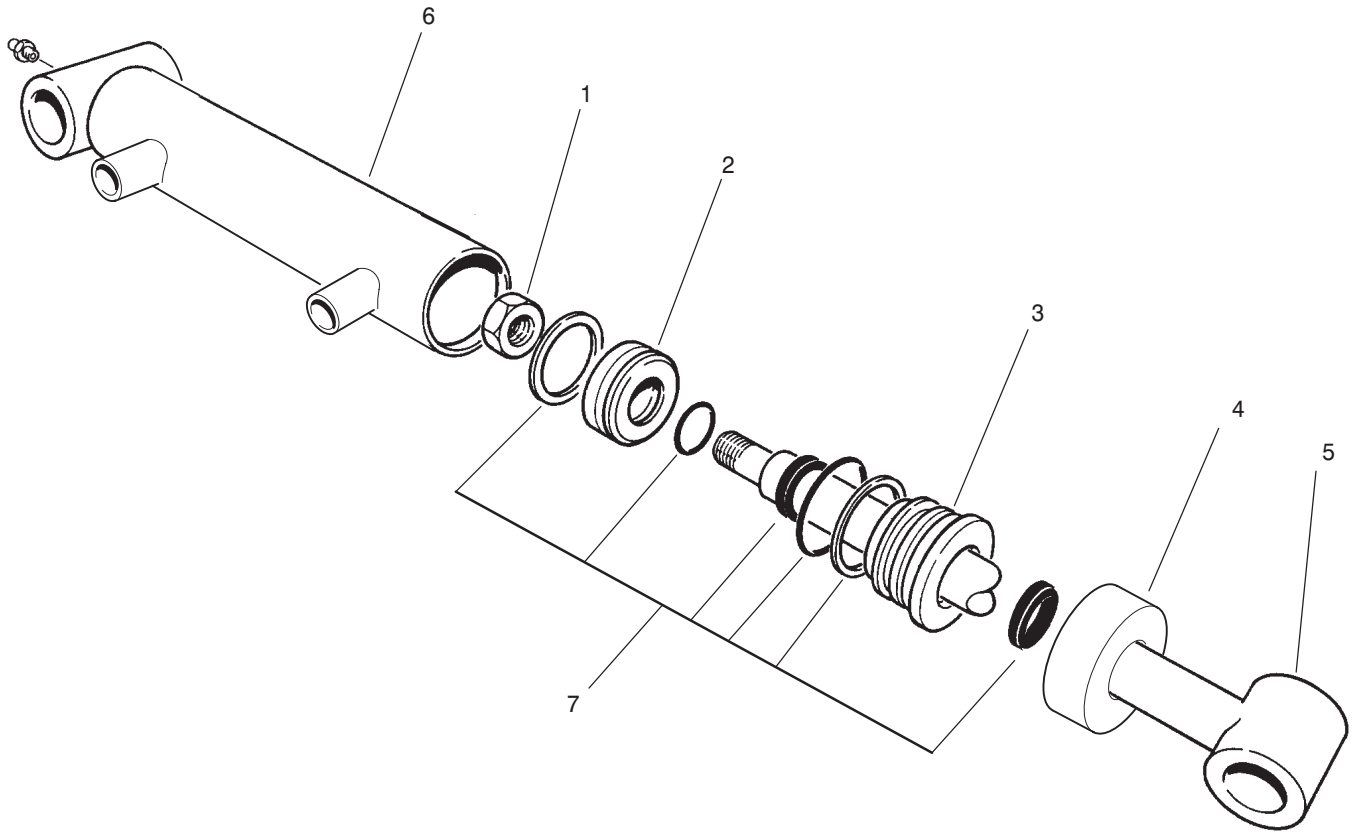
Sheet No.:25
T-3431

Carrier Frame Assembly

Ref. No.	Part No.	Qty.	Description
1	32144-14	3	Screw-HWH
2	83-6790	1	Pin-Cylinder
4	340-143	1	Elbow - 90° Swivel
5	340-132	5	Elbow-90°
5:1	237-78	2	O-Ring
5:2	237-21	2	O-Ring
6	340-92	1	Fitting
6:1	237-78	1	O-Ring
6:2	237-21	1	O-Ring
7	99-5641	2	Hose-Hydraulic
8	94-5808	1	Frame-Carrier
8:2	302-5	1	Fitting-Lube
8:3	67-1750	2	Bushing
9	3296-29	3	Nut-Lock, NI
10	92-8002	1	Plog-Reed Switch, Magnet
11	83-6780-01	2	Pin-Cylinder
*12	3290-379	4	Tie-Cable
13	283-6	3	Pin-Clevis
14	75-5220-03	1	Bracket-Spring, LH
15	75-5200-03	1	Bracket-Spring, RH
16	75-5210-03	1	Bracket-Spring, Center
17	3272-10	3	Pin-Cotter
18	3296-51	4	Nut-Lock NI

Ref. No.	Part No.	Qty.	Description
19	328-7	4	Screw-HH
20	32151-48	3	E-Ring
21	282-4	3	Shackle
22	5-0743-03	3	Spring-Mower, Wing
23	3296-44	3	Nut-Lock NI
24	3256-24	3	Washer-Flat
25	322-5	3	Screw-HH
26	3256-23	3	Washer-Flat
27	93-9310	1	Cylinder-Hydraulic
28	32120-93	6	S-Ring-Hd, Ex
29	3-6498	6	Washer-Thrust
30	75-5350	3	Pin-Slide, Cyl
31	75-5900	1	Hose
32	32104-76	2	Screw-Slot, Acorn
33	75-6370	1	Cap - Sensor
34	99-5621	1	Guide-Hose
35	322-5	2	Screw-HH
37	99-6986	2	Cylinder-Hydraulic
*39	3290-378	2	Tie-Cable
41	3253-5	2	Washer-Lock/Sp

* Not illustrated

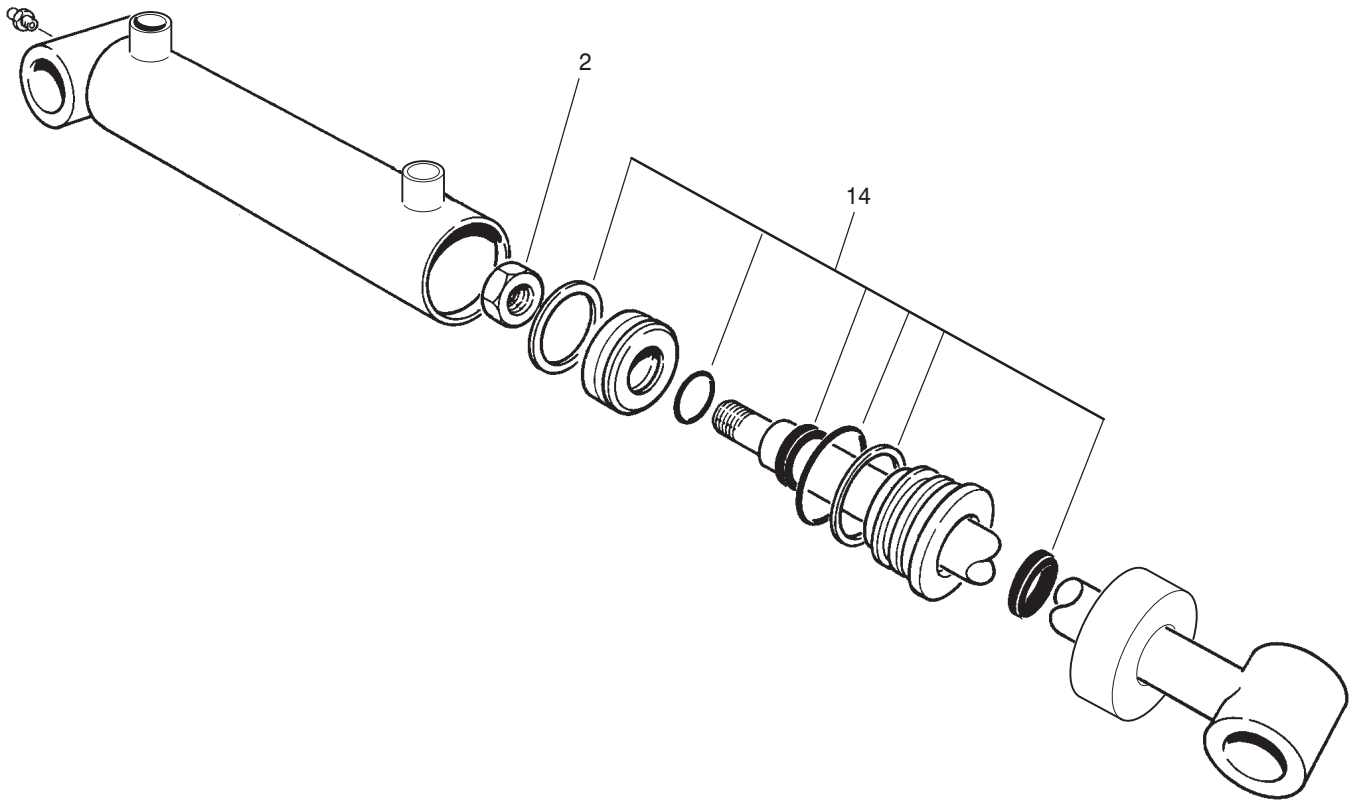


Sheet No.:B1
T-2114-2

Hydraulic Cylinder No. 93-9310

Ref. No.	Part No.	Qty.	Description
1	32152-10	1	Locknut-Deform, Top
2	70-2780	1	Piston
3	93-7990	1	Head
4	93-7991	1	Collar
5	75-3790	1	Shaft w/Tube
6	93-9312	1	Barrel ASM
7	86-7330	1	Kit-Seal

Ref. No.	Part No.	Qty.	Description

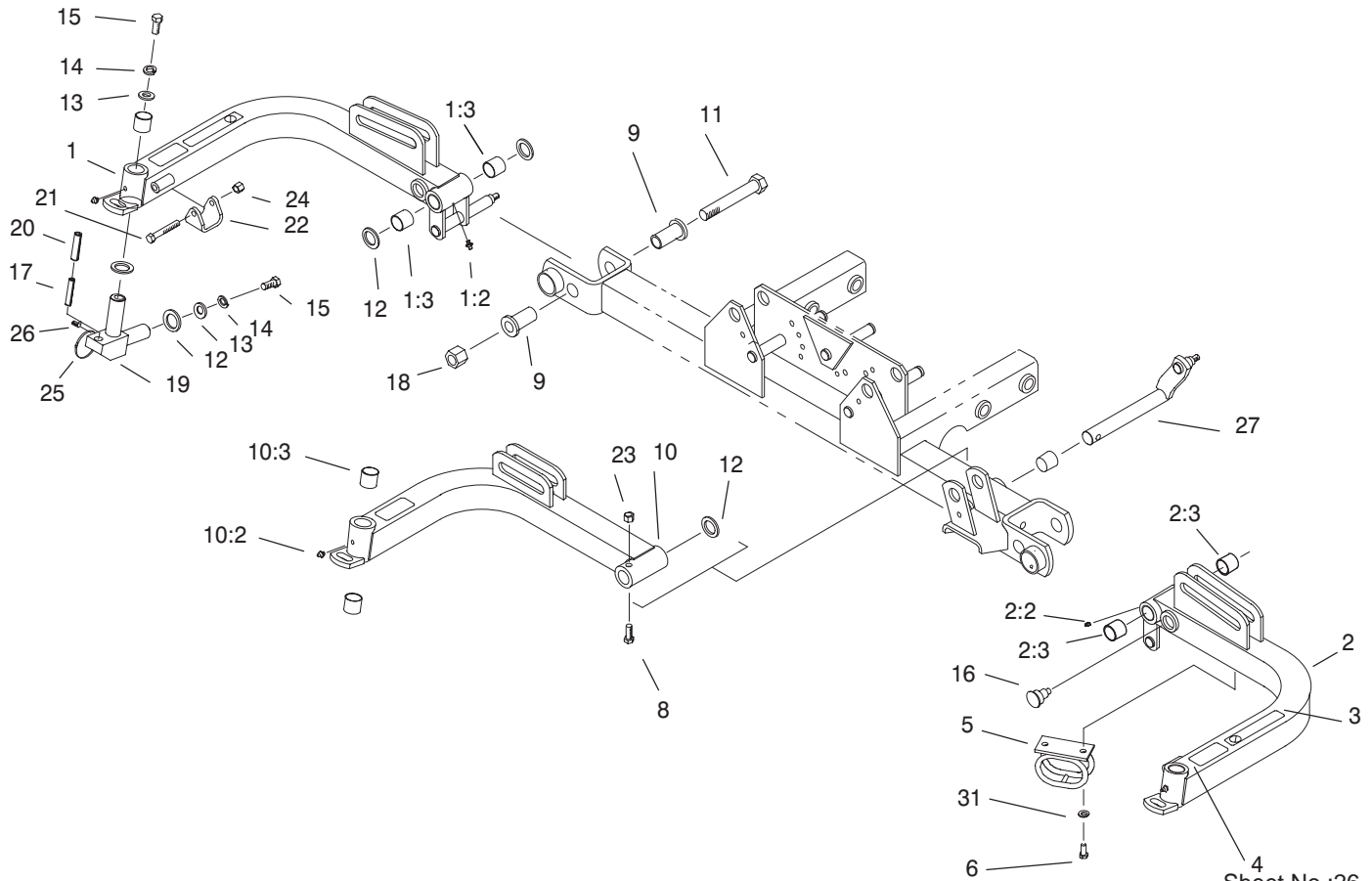


Sheet No.:B2
T-3383

Hydraulic Cylinder Assembly No. 99-6986

Ref. No.	Part No.	Qty.	Description
2	32152-10	1	Locknut-Deform, Top
14	100-8023	1	Kit-Repair, Seal

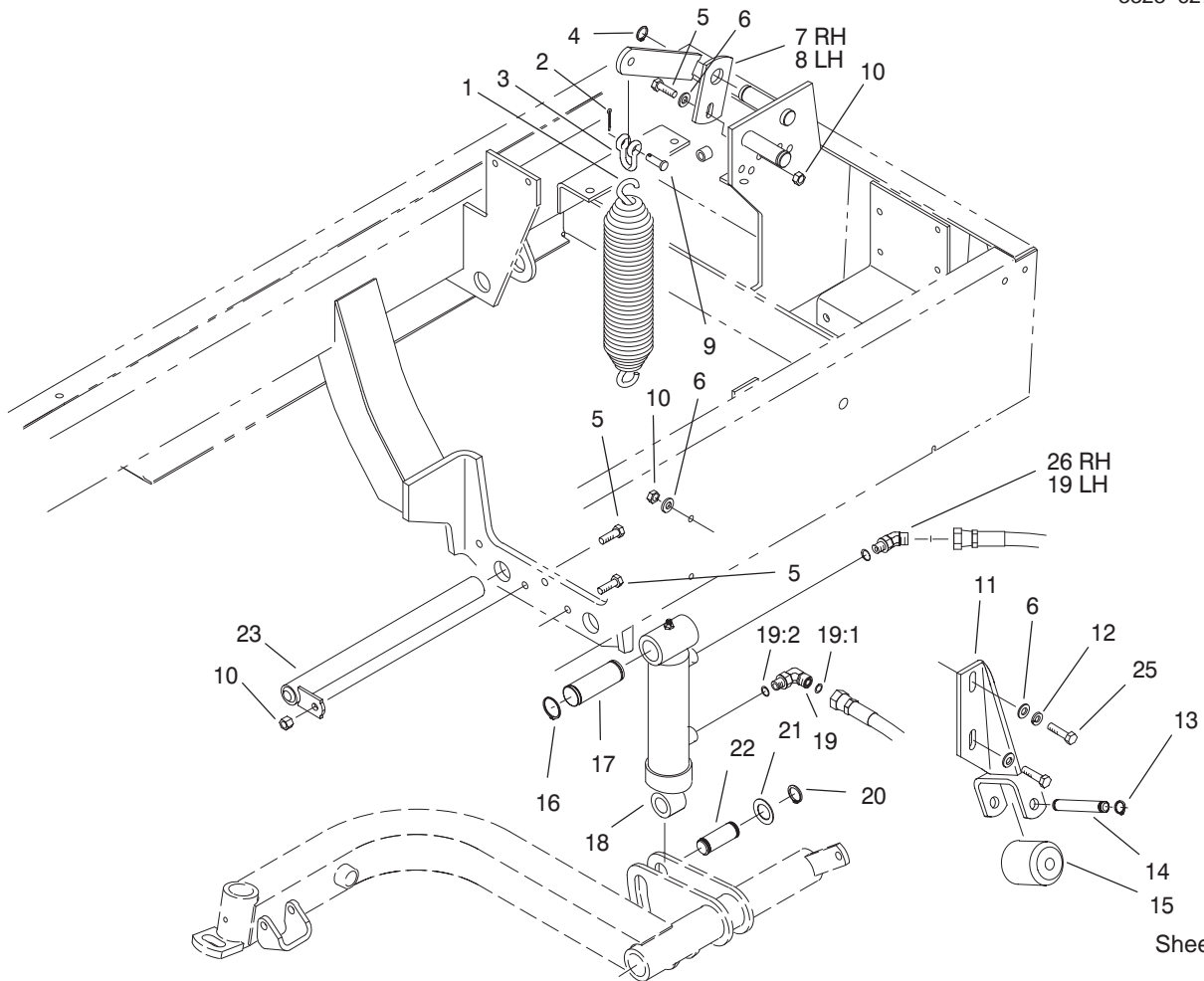
Ref. No.	Part No.	Qty.	Description



Front Lift Arms Assembly

Ref. No.	Part No.	Qty.	Description
1	94-5598	1	Arm-Lift, RH
1:2	302-5	2	Fitting-Lube
1:3	67-1750	4	Bushing
2	94-5800	1	Arm-Lift, LH
2:2	302-5	2	Fitting-Lube
2:3	67-1750	4	Bushing
3	93-6687	2	Decal-Step, No
4	93-6696	3	Decal-Loaded, Spring
5	99-5621	2	Guide-Hose
6	322-5	4	Screw-HH
8	323-11	1	Screw-HH
9	84-8320	4	Insert - Hinge
10	94-5802	1	Arm-Lift, Center
10:2	302-5	1	Fitting-Lube
10:3	67-1750	2	Bushing
11	328-12	2	Screw-HH
12	256-115	11	Washer-Thrust
13	3256-6	6	Washer-Flat
14	3253-7	6	Washer-Lock/Sp
15	325-4	6	Screw-HH
16	92-8754	1	Magnet-Reed Switch, Plug
17	32121-27	3	Pin-Roll
18	3296-51	2	Nut-Lock NI
19	75-3010-03	3	Joint-Arm
20	32121-122	3	Pin - Roll

Ref. No.	Part No.	Qty.	Description
21	323-12	2	Screw-HH
22	75-5410	2	Bracket-Arm
23	3296-44	1	Nut-Lock NI
24	3296-39	2	Nut-Lock, NI
25	3290-378	4	Tie-Cable
26	92-9097	3	Screw-HS
27	75-4550-03	1	Shaft-Lift, Center
31	3253-5	4	Washer-Lock/Sp



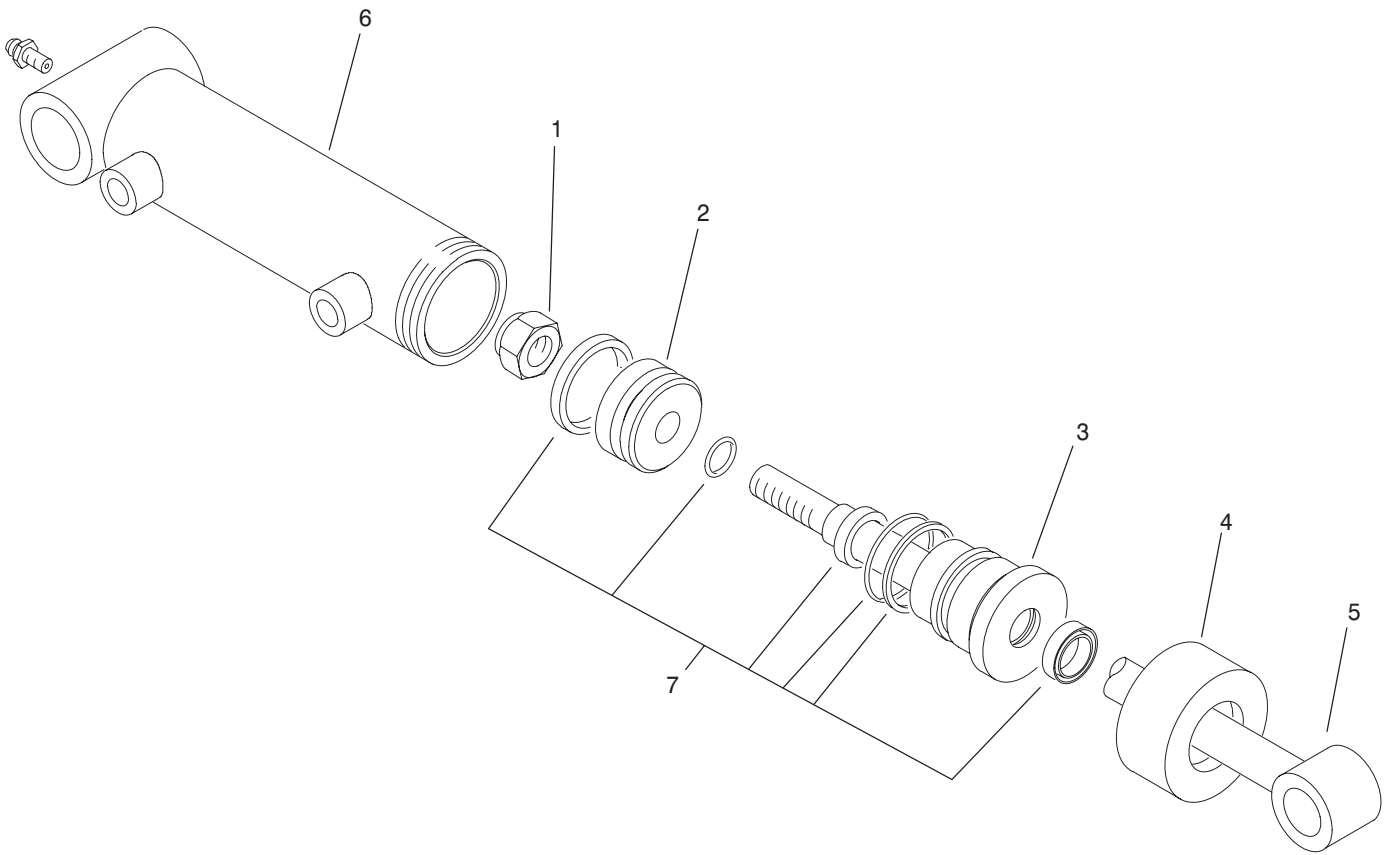
Sheet No.:27
T-3433

Rear Lift Arm Installation Assembly

Ref. No.	Part No.	Qty.	Description
1	5-0743	2	Spring-Mower, Wing
2	3272-10	2	Pin-Cotter
3	282-4	2	Shackle
4	32151-48	2	E-Ring
5	322-5	4	Screw-HH
6	3256-23	9	Washer-Flat
7	98-4548-03	1	Bracket-Spring, RH
8	98-4536-03	1	Bracket-Spring, LH
9	283-6	2	Pin-Clevis
10	3296-29	11	Nut-Lock, NI
11	75-3810-01	2	Bracket-Roller
12	3253-4	2	Washer
13	32151-61	4	Ring-Retaining
14	75-5400	2	Pin - Roller
15	75-5390	2	Roller
16	32151-36	4	Ring-Retaining
17	75-5360	2	Pin-Cylinder
18	93-9311	2	Cylinder-Hydraulic
19	340-132	3	Elbow-90°
19:1	237-78	1	O-Ring
19:2	237-21	1	O-Ring
20	32120-93	4	S-Ring-Hd, Ex
21	3-6498	4	Washer-Thrust
22	75-5350	2	Pin-Slide, Cyl
23	93-0069-03	2	Pin-Rear
*24	3290-379	3	Tie-Cable

Ref. No.	Part No.	Qty.	Description
25	322-6	4	Screw-HH
26	340-103	1	Fitting

* Not illustrated

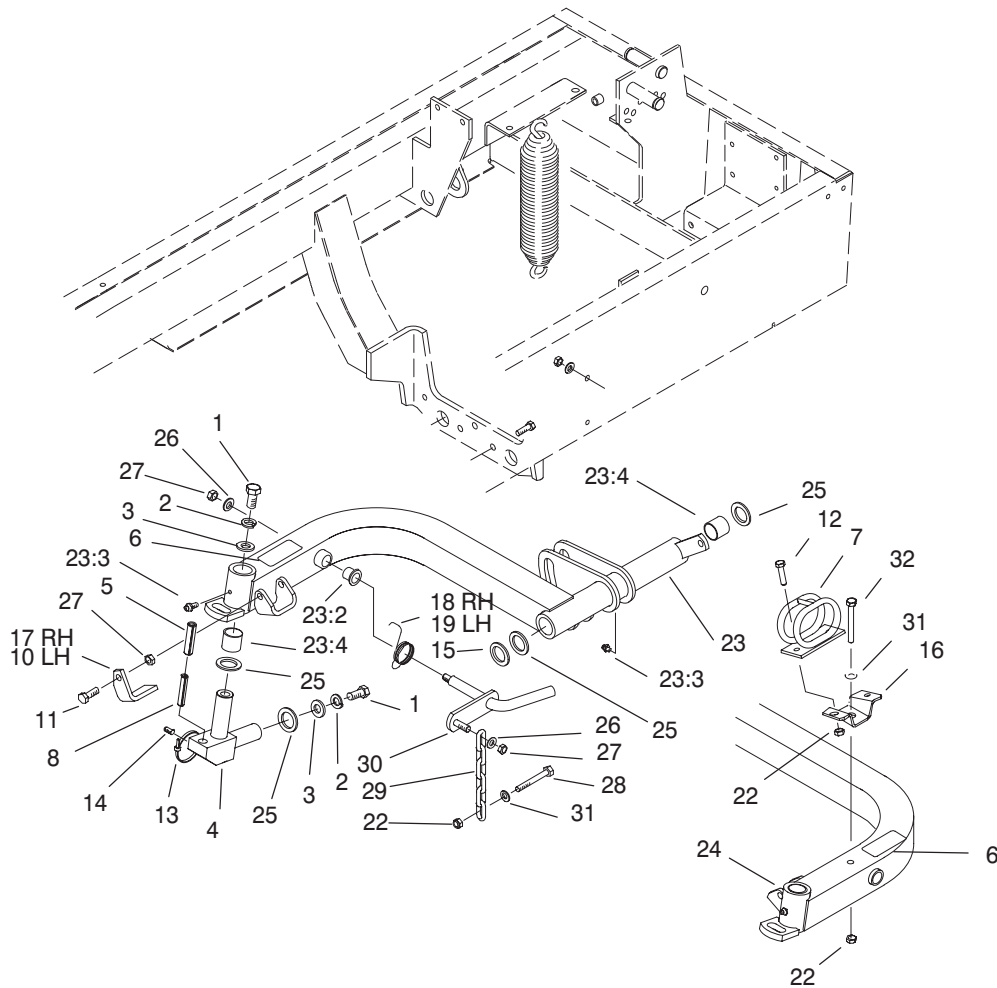


Sheet No.:B3
T-2114-2

Hydraulic Cylinder No. 93-9311

Ref. No.	Part No.	Qty.	Description
1	32152-10	1	Locknut-Deform, Top
2	70-2780	1	Piston
3	93-7990	1	Head
4	93-7991	1	Collar
5	75-3790	1	Shaft w/Tube
6	93-9313	1	Barrel ASM
7	86-7330	1	Kit-Seal

Ref. No.	Part No.	Qty.	Description



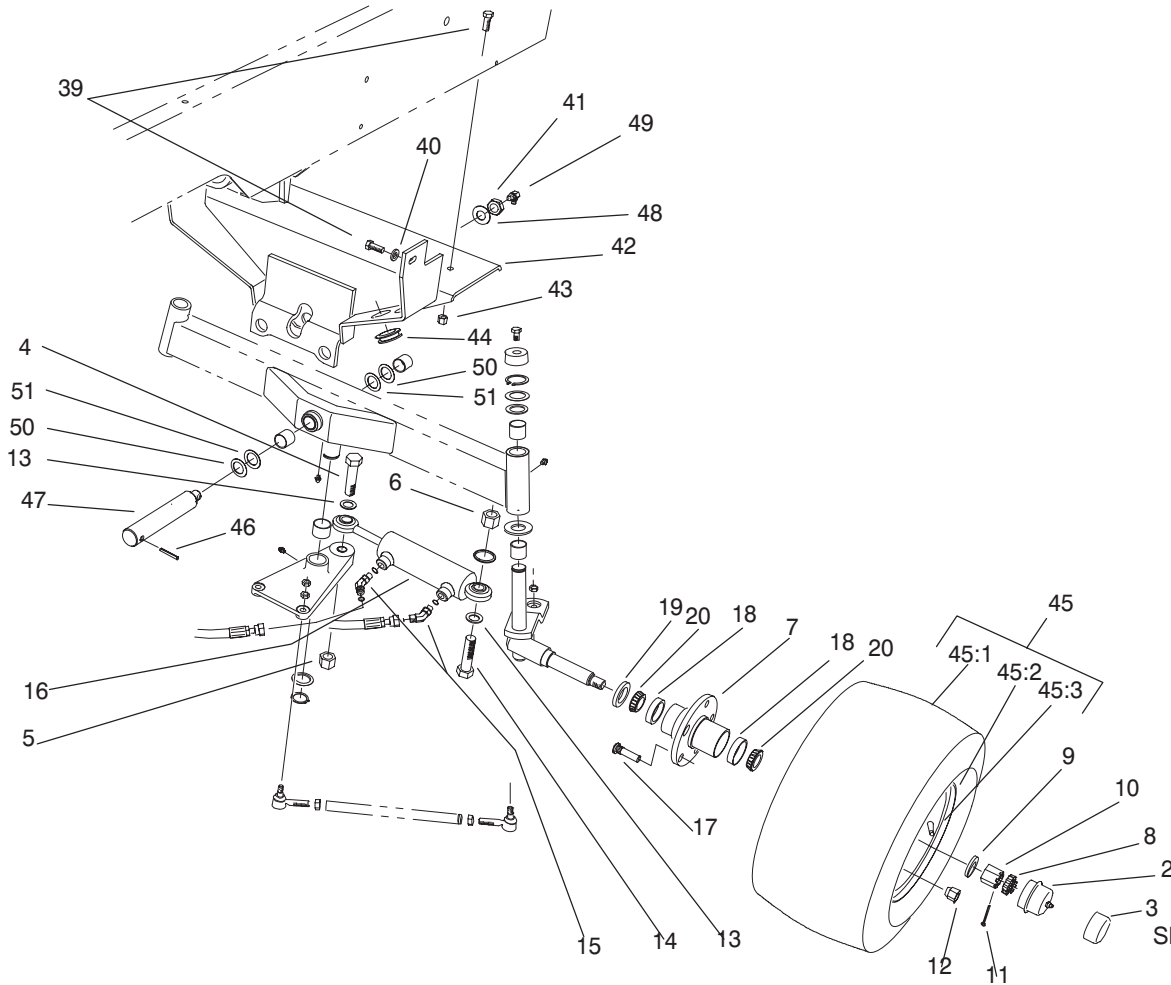
Sheet No.:28
T-3434

Rear Lift Arm Assembly

Ref. No.	Part No.	Qty.	Description
1	325-4	4	Screw-HH
2	3253-7	4	Washer-Lock/Sp
3	3256-6	4	Washer-Flat
4	75-3010	2	Joint-Arm
5	32121-122	2	Pin - Roll
6	93-6696	2	Decal-Loaded, Spring
7	99-5621	1	Guide-Hose
8	32121-27	2	Pin-Roll
*9	3290-379	1	Tie-Cable
10	83-5170	1	Stop LH
11	323-6	2	Screw-HH
12	322-5	2	Screw-HH
13	3290-378	4	Tie-Cable
14	92-9097	2	Screw-HS
15	93-0142	2	Bushing - Straight
16	94-4919	1	Brkt.- Clamp, Hose
17	93-3640	1	Stop - RH
18	75-4520	1	Spring-Torsion, RH
19	75-4530	1	Spring-Torsion, LH
22	3296-29	4	Nut-Lock,NI
23	94-5596	1	Arm-Lift, LH Rear
23:2	256-287	2	Bushing
23:3	302-5	2	Fitting-Lube
23:4	67-1750	4	Bushing
24	94-5594	1	Arm-Lift, LH Rear
*24:2	256-287	2	Bushing

Ref. No.	Part No.	Qty.	Description
*24:3	302-5	2	Fitting-Lube
*24:4	67-1750	4	Bushing
25	256-115	8	Washer-Thrust
26	3256-24	4	Washer-Flat
27	3296-39	6	Nut-Lock, NI
28	322-12	2	Screw-HH
29	5-1096	2	Chain-Lift
30	75-4590-03	2	Rod-Pivot
31	3256-23	2	Washer-Flat
32	322-13	1	Screw-HH

* Not illustrated

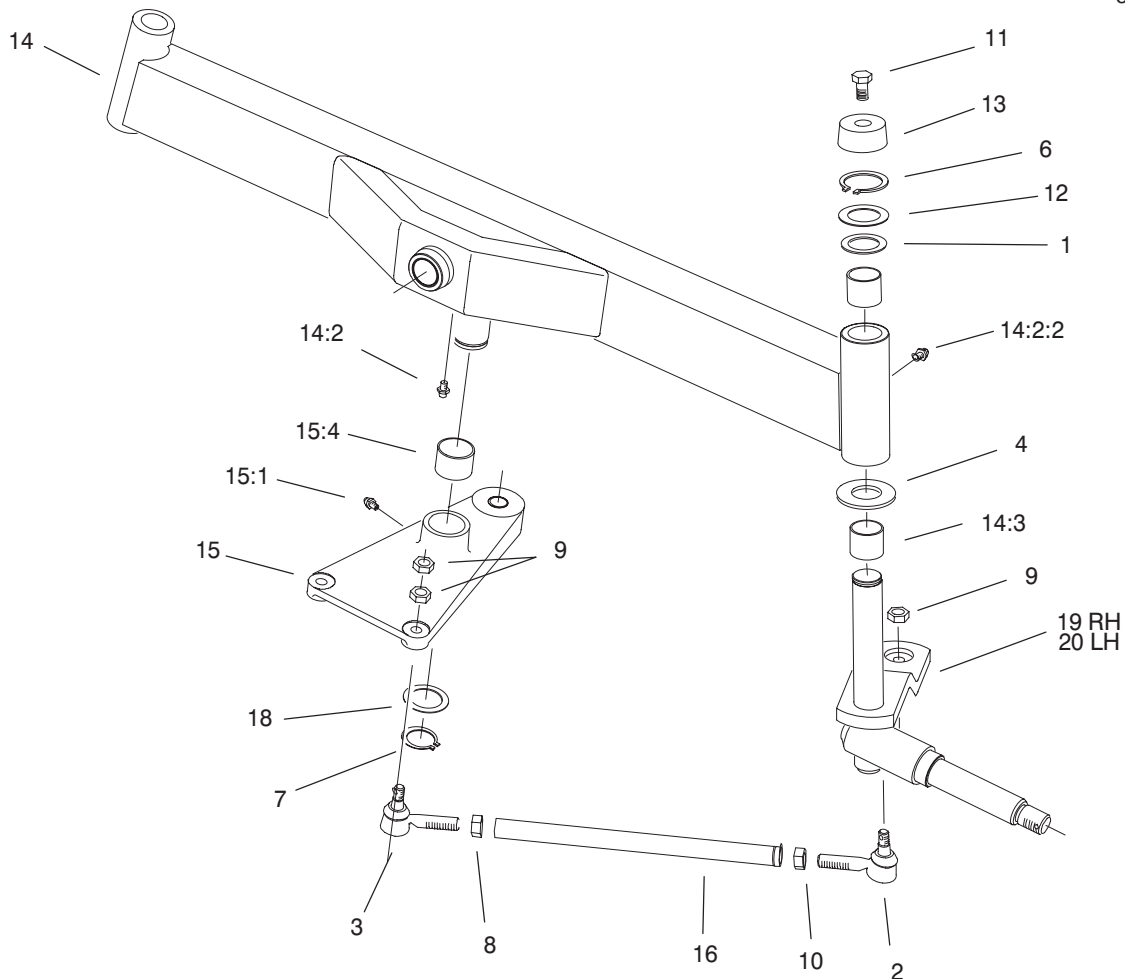


Sheet No.:31
T-3435

Rear Axle Support Assembly

Ref. No.	Part No.	Qty.	Description
1		1	Axle-Rear Assembly (Black)
1:1		1	Axle-Rear Assembly
2	100-3769	2	Bearing Buddy
3	100-3809	2	Bearing Protector, Cap
4	328-25	1	Screw-HH
5	32153-6	2	Locknut
6	67-7250	1	Spacer-Ring
7	21-0180	2	Hub ASM
8	93-0307	2	Nut Retainer-Lock
9	93-0309	4	Washer - Tab
10	3220-7	2	Nut-Jam
11	3272-13	2	Pin-Cotter
12	242-50	10	Nut-Lug
13	67-9410	2	Washer
14	328-27	1	Screw HH
15	340-103	2	Fitting
16	75-1200	1	Cylinder - Hyd Steering
17	10-6830	10	Stud-Type, Drive
18	254-72	4	Bearing-Taper/Cup
19	253-129	2	Seal
20	254-94	4	Bearing-Taper/Cone
39	323-7	4	Screw-HH
40	3256-24	2	Washer-Flat
41	32146-20	1	Nut-Jam

Ref. No.	Part No.	Qty.	Description
42	98-8172-03	1	Support-Axle
43	3296-39	2	Nut-Lock, NI
44	237-165	2	Grommet
45	82-6900	2	Wheel & Tire Assy-Rear
45:1	231-141	1	Tire - Rear
45:2	217-121	1	Rim
45:3	232-35	1	Valve Stem
46	32121-32	1	Pin-Roll
47	98-8173-03	1	Pin-Pivot, Axle
48	71-4540	1	Thrust Washer
49	302-33	1	Fitting-Grease
50	99-8431	2	Washer-Thrust
51	99-8432	2	Washer-Thrust



Sheet No.:B4
T-XXXX

Rear Axle Assembly No. 18-4029-03

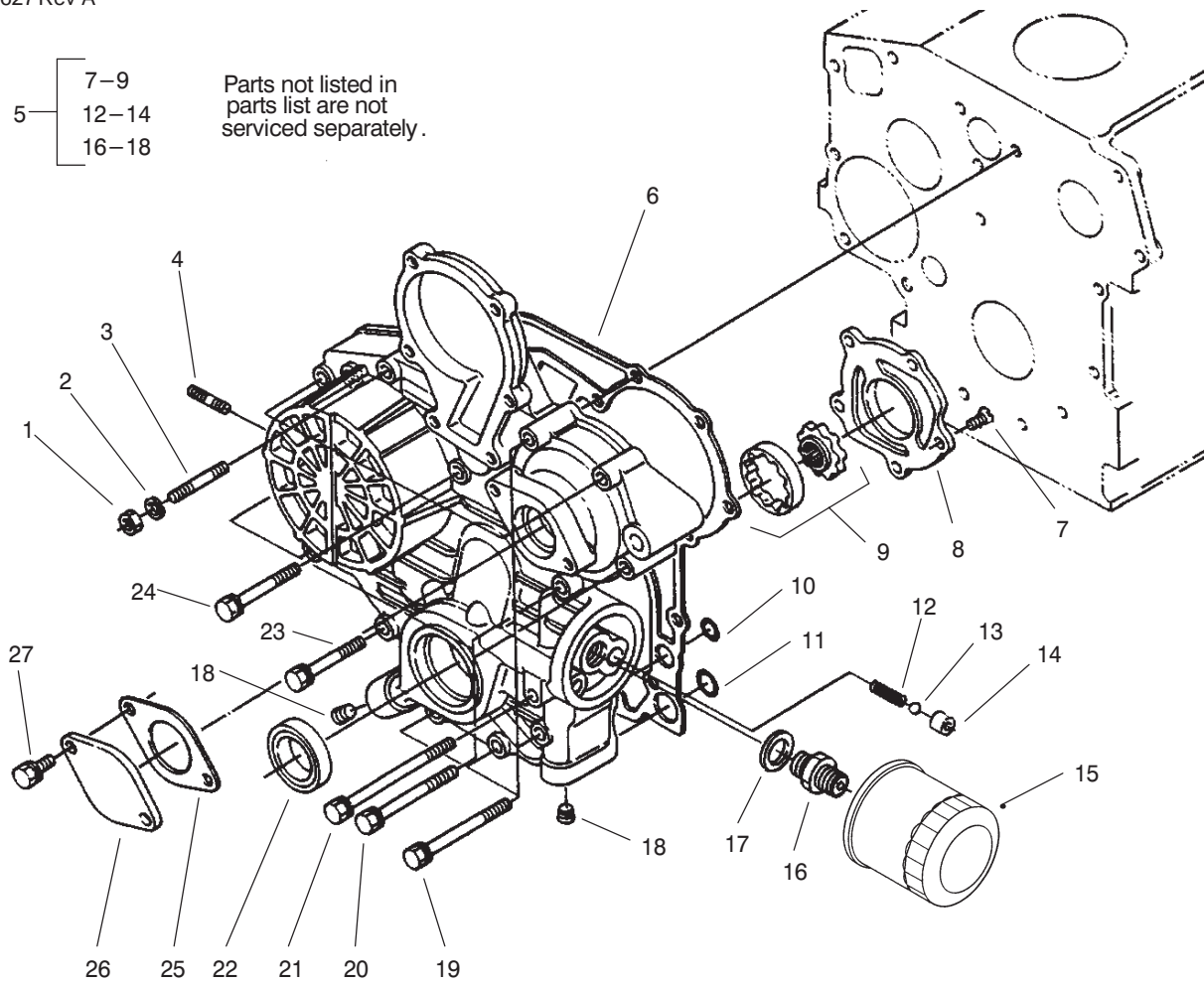
Ref. No.	Part No.	Qty.	Description
1	10-8110	2	Washer-Thrust
2	21-0141	2	RH Socket ASM
3	21-0151	2	LH Socket ASM
4	256-121	2	Thrust Washer
6	32151-36	2	Ring-Retaining
7	32151-77	1	Retaining Ring
8	3220-12	2	Nut-Hex,Jam,LH
9	3220-3	8	Nut-Jam
10	3220-5	2	Nut-Hex Jam
11	3234-13	2	Screw-HHF
12	5-1226	2	Washer
13	66-2990	2	Spindle Cap
14		1	Axle-Rear,Welded
14	99-6935-03	1	Axle-Rear,
14:2		1	Axle-Rear,Welded
14:2	302-5	2	Fitting-Lube
14:2:2	302-5	2	Fitting-Lube
14:2:3	67-1750	4	Bushing
14:2:4	99-6964	2	Bushing-Axle
14:3	67-1750	4	Bushing
14:4	99-6964	2	Bushing-Axle
15	75-4410	1	Pivot Plate Assy
15:1	302-5	1	Fitting-Lube
15:4	76-2970	2	Bushing
16	75-3130	2	Tie Rod
18	76-2980	1	Thrust Washer

Ref. No.	Part No.	Qty.	Description
*19	93-7000	1	Spindle-RH
20	93-7001	1	Spindle-LH

* Not illustrated

5 — [7-9
12-14
16-18

Parts not listed in parts list are not serviced separately.

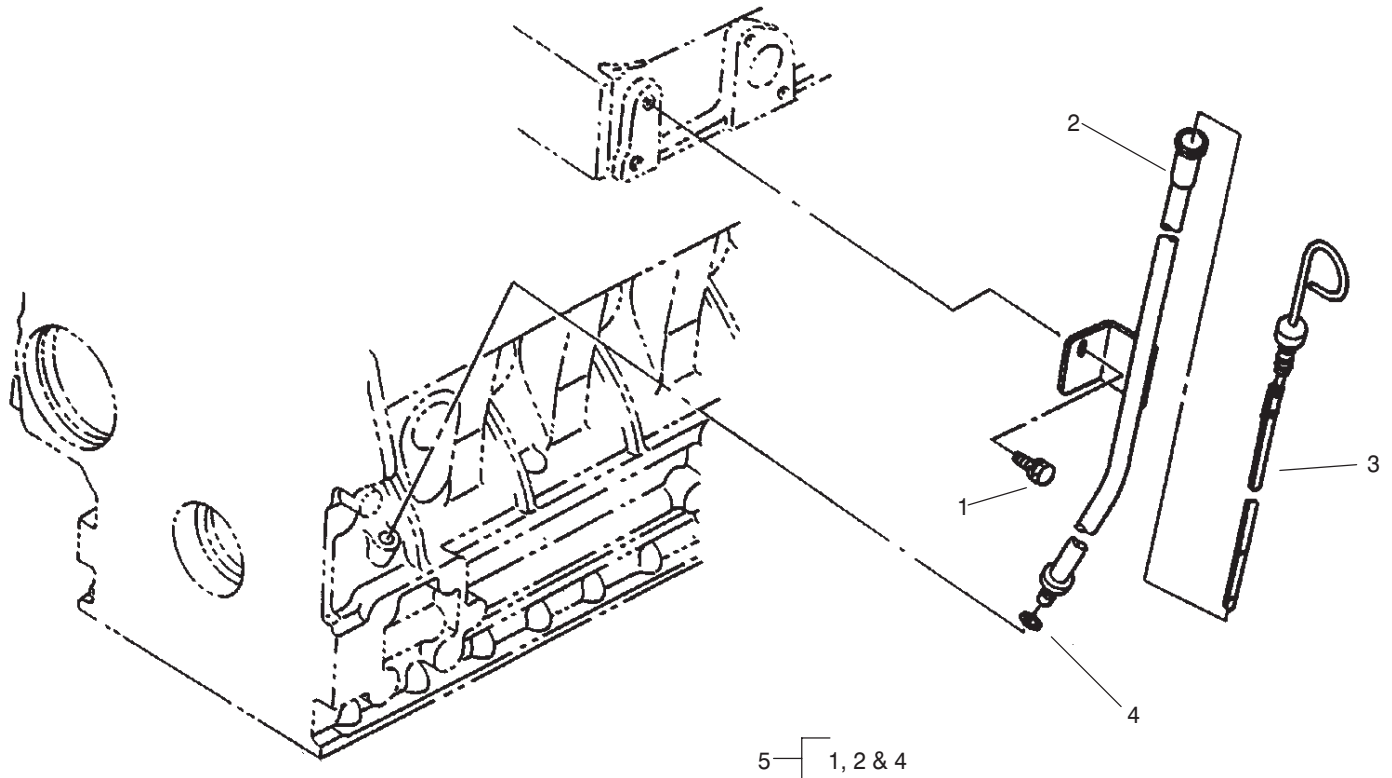


T-2909

Gear Case and Oil Filter Assembly

Ref. No.	Part No.	Qty.	Description
1	98-7572	1	Nut
2	98-9367	1	Washer-Lock
3	98-9363	1	Stud
4	98-9362	2	Stud
5	98-9481	1	Gear Case ASM
6	98-9633	1	Gasket-Case, Gear
7	98-9592	5	Screw
8	98-9541	1	Cover-Pump, Oil
9	98-9540	1	Oil Pump Rotor ASM
10	98-9372	2	O-Ring
11	98-7547	2	O-Ring
12	98-9544	1	Spring
13	98-9380	1	Ball
14	98-9543	1	Seal-Valve
15	99-8384	1	Oil Cartridge ASM
16	98-9388	1	Joint-Pipe
17	98-7562	1	Washer-Flat
18	98-9598	2	Plug
19	98-9356	2	Bolt
20	98-9355	6	Bolt
21	98-9586	1	Bolt
22	98-9482	1	Seal-Oil
23	98-9437	1	Bolt
24	98-7496	3	Bolt
25	98-9684	1	Gasket-Case, Gear

Ref. No.	Part No.	Qty.	Description
26	98-9641	1	Cover
27	98-7692	2	Bolt



5 — 1, 2 & 4

Parts not listed in parts list are not serviced separately.

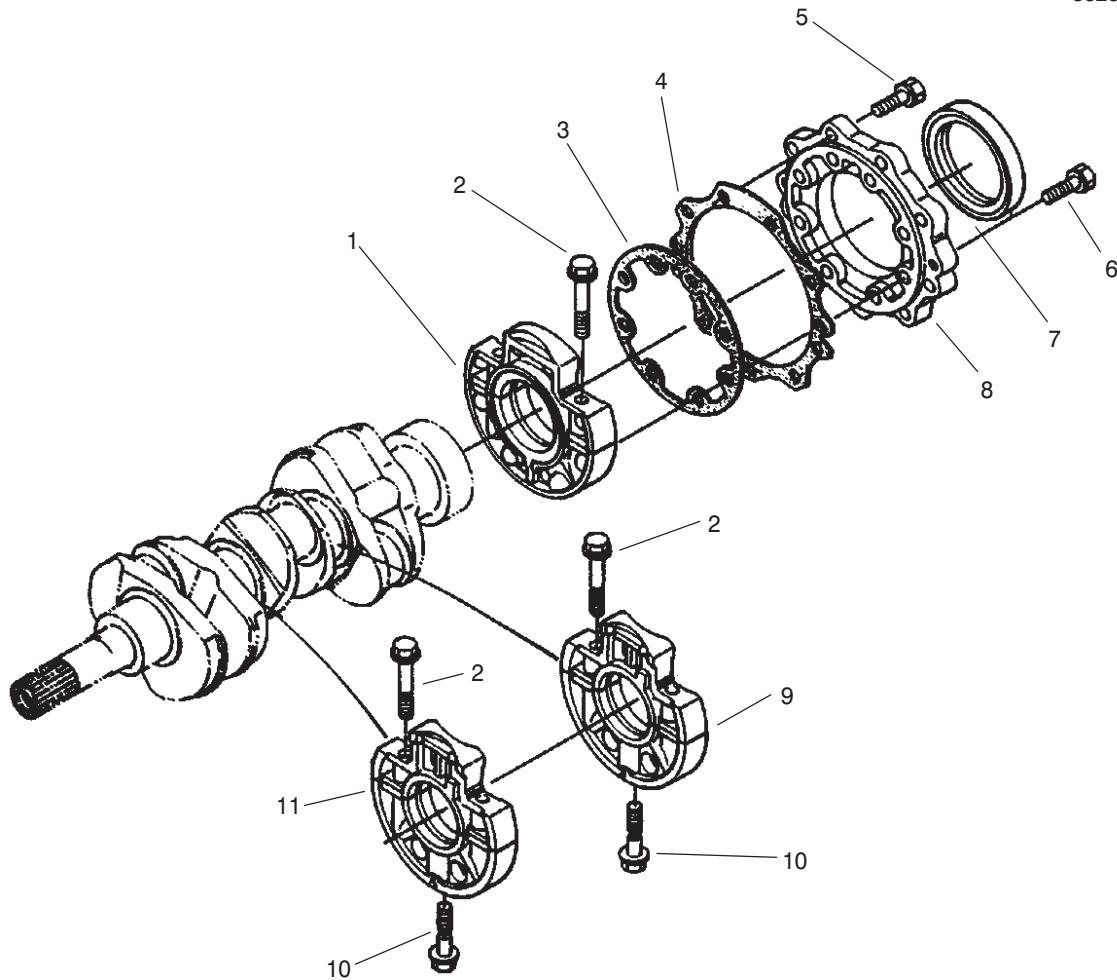
T-2911

Dipstick and Guide Assembly

Ref. No.	Part No.	Qty.	Description
1	98-7585	1	Bolt
2	98-9671	1	Guide-Gauge, Oil
3	98-9670	1	Gauge-Oil
4	98-9374	1	O-Ring
5	98-9672	1	Oil Gauge Guide ASM

Ref. No.	Part No.	Qty.	Description

* Not Illustrated.

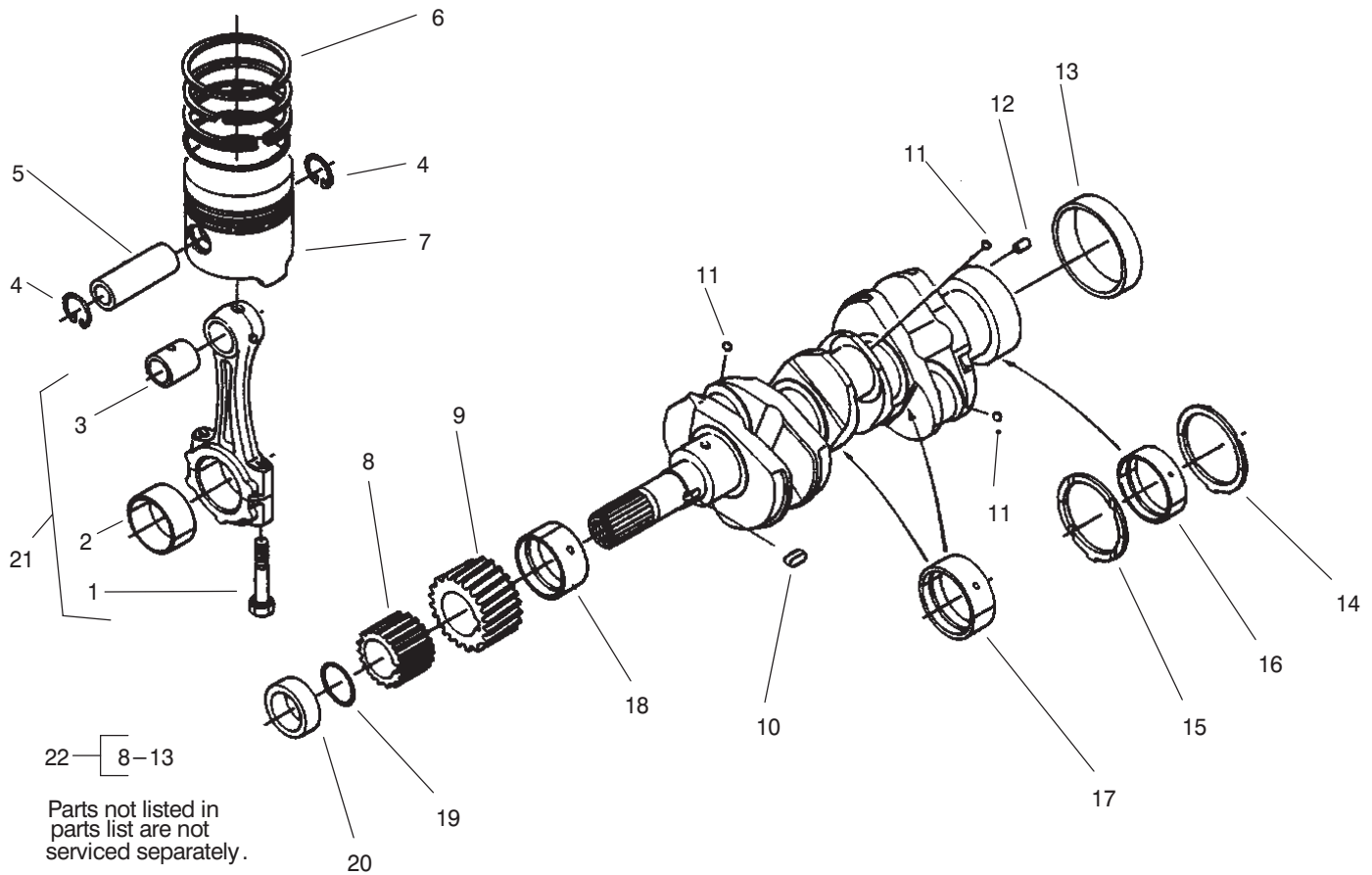


T-2912

Main Bearing Case Assembly

Ref. No.	Part No.	Qty.	Description
1	99-8345	1	Main Bearing Case ASM
2	98-9484	6	Bolt-Case, Bearing
3	98-9634	1	Gasket-Case, Bearing
4	98-9635	1	Gasket-Cover, Bearing Case
5	98-7568	9	Bolt
6	98-9352	8	Bolt
7	98-9483	1	Seal-Oil
8	98-9487	1	Cover-Case, Bearing
9	98-9607	1	Main Bearing Case ASM
10	98-9485	2	Bolt-Case, Bearing
11	98-9606	1	Main Bearing Case ASM

Ref. No.	Part No.	Qty.	Description

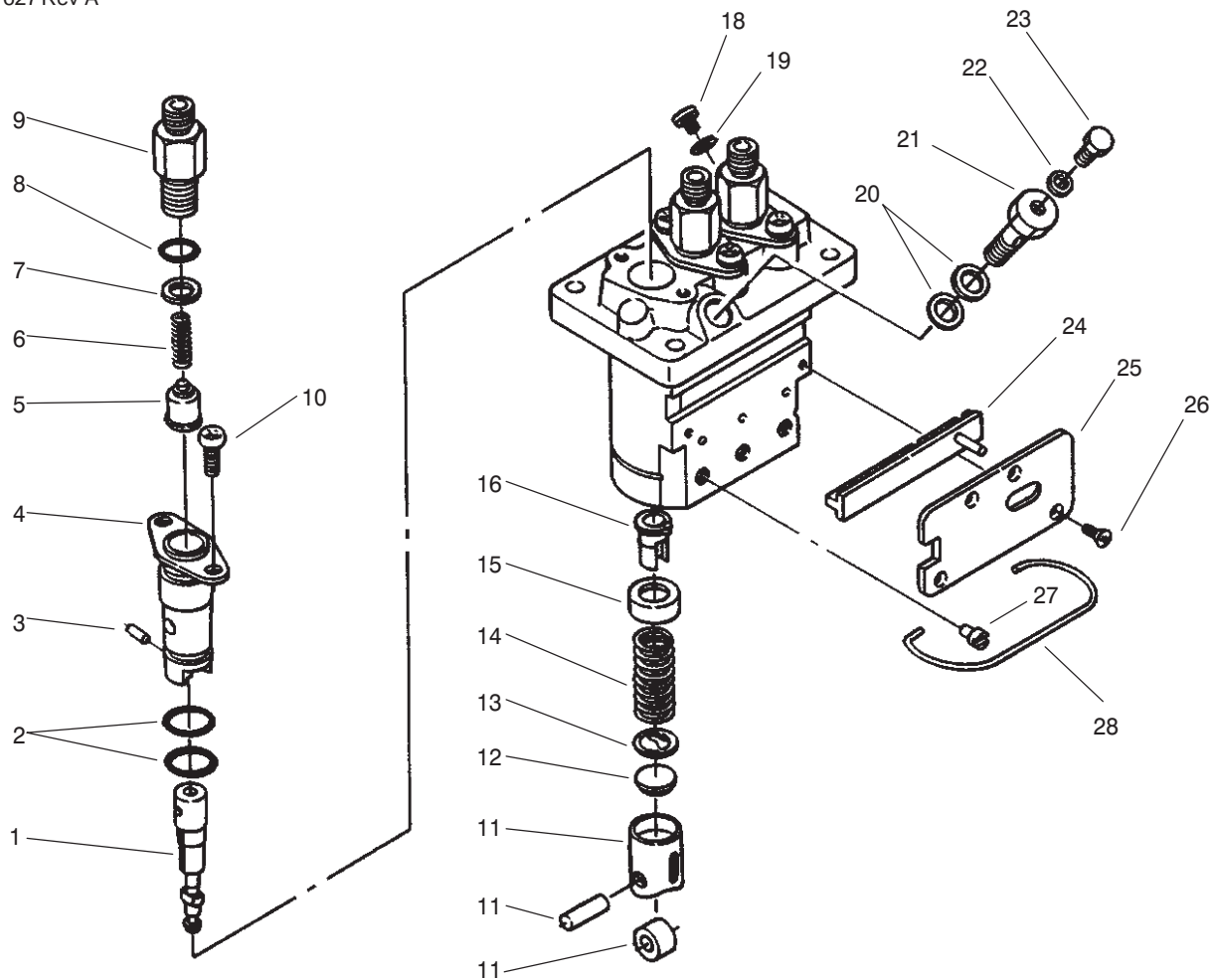


T-2914

Piston and Crankshaft Assembly

Ref. No.	Part No.	Qty.	Description
1	98-9517	6	Bolt-Rod, Connecting
2	98-9518	3	Metal-Crankpin (Std.)
2	98-9519	3	Metal-Crankpin (0.2mm Undersize)
2	98-9520	3	Metal-Crankpin (0.4mm Undersize)
3	98-9515	3	Bushing-Pin, Piston
4	98-9514	6	Clip-Circular, Piston Pin
5	98-9513	3	Pin-Piston
6	98-9618	3	Piston Ring ASM (Std.)
6	98-9619	3	Piston Ring ASM (0.5mm Oversize)
7	98-9469	3	Piston (Std.)
7	98-9470	3	Piston (0.5mm Oversize)
8	98-9542	1	Gear-Drive, Oil Pump
9	98-9532	1	Gear-Crankshaft
10	98-9666	1	Key
11	98-7473	3	Ball
12	98-9375	1	Pin-Straight
13	98-9522	1	Sleeve-Crankshaft
14	98-9413	2	Metal-Side (Std.)
14	98-9414	2	Metal-Side (0.2mm Oversize)

Ref. No.	Part No.	Qty.	Description
14	98-9415	2	Metal-Side (0.4mm Oversize)
15	98-9688	2	Metal-Side (Std.)
15	98-9689	2	Metal-Side (0.2mm Oversize)
15	98-9690	2	Metal-Side (0.4mm Oversize)
16	98-9525	1	Metal-Crankshaft (Std.)
16	98-9526	1	Metal-Crankshaft (0.2mm Undersize)
16	98-9527	1	Metal-Crankshaft (0.4mm Undersize)
17	98-9524	2	Metal-Crankshaft (Std. Set)
17	98-9530	2	Metal-Crankshaft (0.2mm Undersize Set)
17	98-9531	2	Metal-Crankshaft (0.4mm Undersize Set)
18	98-9523	1	Metal-Crankshaft (Std.)
18	98-9528	1	Metal-Crankshaft (0.2mm Undersize)
18	98-9529	1	Metal-Crankshaft (0.4mm Undersize)
19	98-9373	1	O-Ring
20	98-9521	1	Collar-Crankshaft

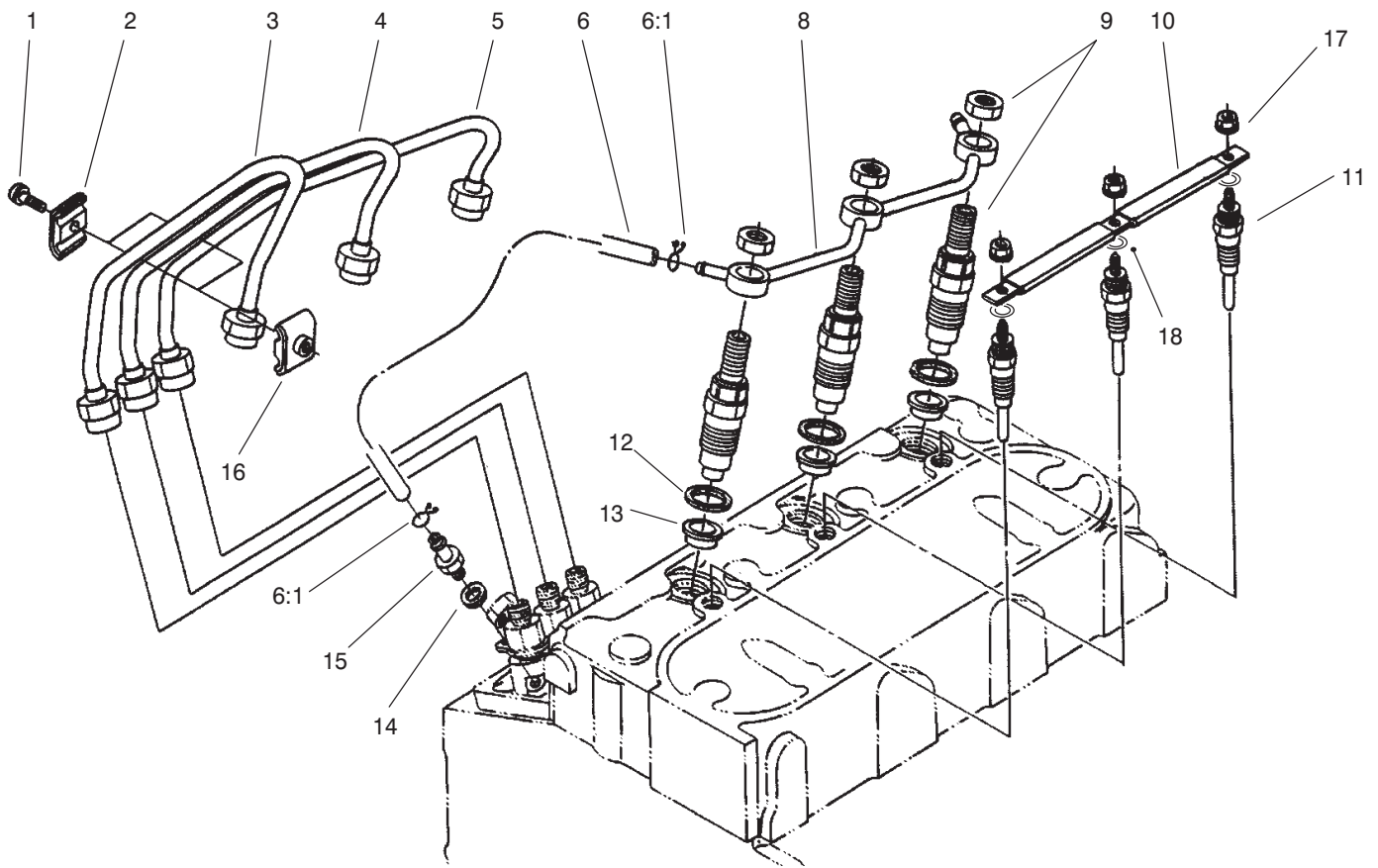


T-2920

Injection Pump Assembly No. 98-9643

Ref. No.	Part No.	Qty.	Description
1	98-9462	3	Element-Pump
2	98-9423	6	O-Ring
3	98-9443	3	Pin-Joint
4	98-9434	3	Flange-Sleeve
5	98-9421	3	Valve-Delivery
6	98-9424	3	Spring-Valve, Delivery
7	98-9425	3	Gasket-Valve, Delivery
8	98-9447	3	O-Ring
9	98-9652	3	Holder-Valve, Delivery
10	98-9452	6	Screw
11	98-9422	3	Tappet ASM
12	98-9433	3	Shim
13	98-9429	3	Seat-Spring, Lower
14	98-9428	3	Spring-Plunger
15	98-9427	3	Seat-Spring, Upper
16	98-9432	3	Sleeve-Control
18	98-9466	1	Plug
19	98-9451	1	Gasket
20	98-9445	2	Gasket
21	98-9464	1	Bolt-Joint
22	98-9446	1	Gasket
23	98-9430	1	Screw
24	98-9463	1	Rack-Control
25	98-9465	1	Plate
26	98-9442	4	Screw-Countersunk

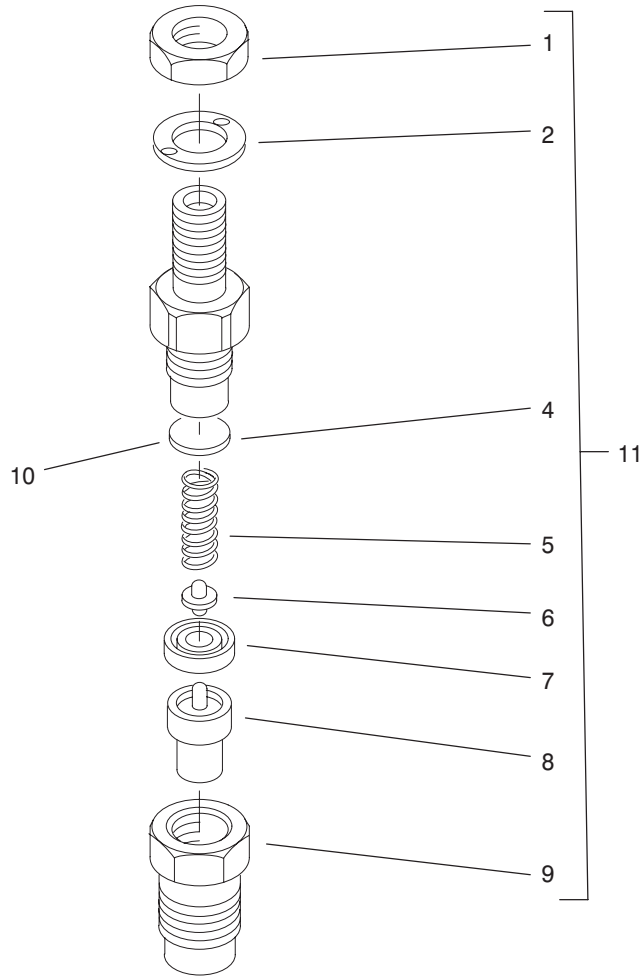
Ref. No.	Part No.	Qty.	Description
27	98-9426	3	Pin-Guide, Tappet
28	98-9450	1	Pin-Clamp



T-2923

Nozzle Holder and Glow Plug Assembly

Ref. No.	Part No.	Qty.	Description	Ref. No.	Part No.	Qty.	Description
1	98-7684	2	Screw w/washer				
2	98-7683	2	Clamp-Pipe				
3	98-9653	1	Pipe-Injection				
4	98-9654	1	Pipe-Injection				
5	98-9655	1	Pipe-Injection				
6	98-9420	1	Overflow Pipe ASM				
6:1	98-7671	2	Clip-Pipe				
8	98-9620	1	Overflow Pipe ASM				
9	98-9468	3	Nozzle Holder ASM				
10	98-9631	1	Cord-Plug, Glow				
11	98-9695	3	Plug-Glow				
12	98-7676	3	Gasket				
13	98-7677	3	Seat-Heat				
14	98-7654	1	Gasket				
15	98-9431	1	Screw-Bleed, Air				
16	98-7682	2	Clamp-Pipe				
17	99-8377	3	Nut-Flange				
18	99-8378	3	Washer-Plain				



Parts not listed in parts list are not serviced separately.

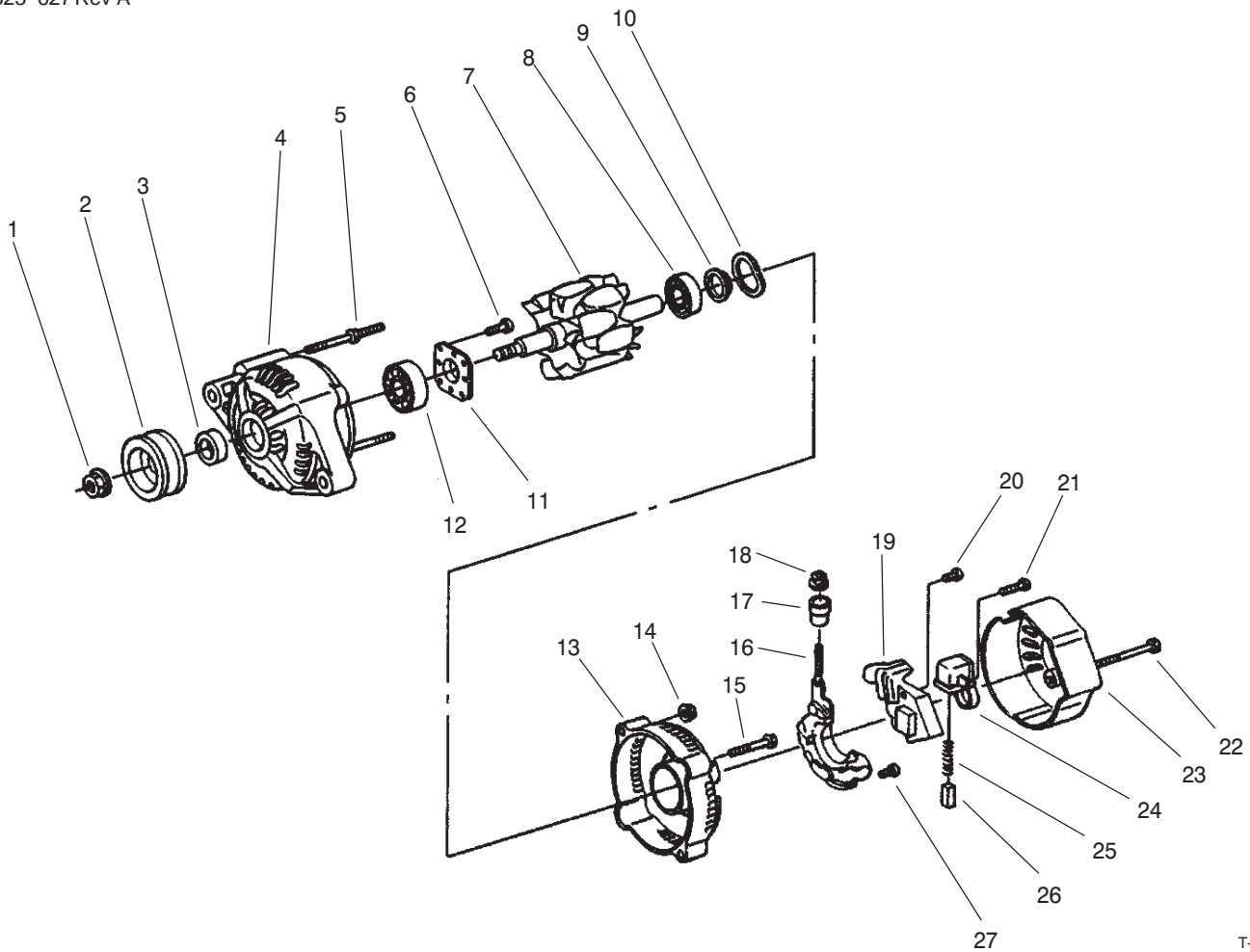
T-2924

Nozzle Holder Assembly

Ref. No.	Part No.	Qty.	Description
1	99-8301	3	Nut
2	99-8307	3	Washer
4	99-8302	3	Washer-Adjusting
5	99-8303	3	Spring-Nozzle
6	99-8305	3	Rod-Push
7	99-8304	3	Piece-Distance
8	99-8308	3	Piece-Nozzle
9	99-8306	3	Nut-Nozzle
10	99-8309	3	Adjusting Washer ASM
*	99-8310	3	Washer-Adj. (0.10mm)
*	99-8311	3	Washer-Adj. (0.20mm)
10	99-8312	3	Washer-Adj. (0.30mm)
*	99-8313	3	Washer-Adj. (0.40mm)
*	99-8314	3	Washer-Adj. (0.50mm)
*	99-8315	3	Washer-Adj. (0.52mm)
*	99-8316	3	Washer-Adj. (0.54mm)
*	99-8317	3	Washer-Adj. (0.56mm)
*	99-8318	3	Washer-Adj. (0.58mm)
*	99-8319	3	Washer-Adj. (0.80mm)
11	98-9468	3	Nozzle Holder ASM

Ref. No.	Part No.	Qty.	Description

* Not Illustrated.

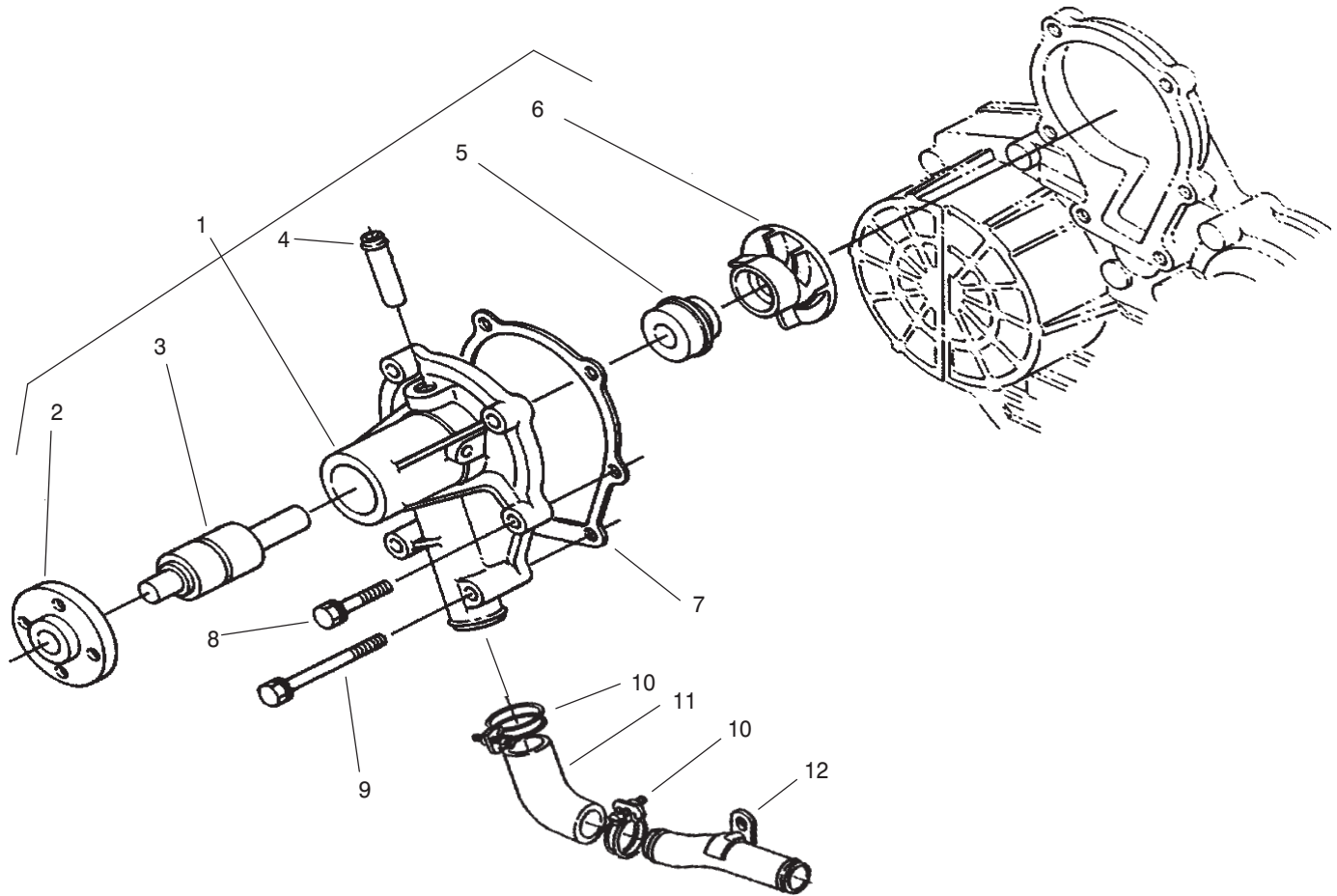


T-2927

Alternator Assembly No. 98-9474

Ref. No.	Part No.	Qty.	Description
1	98-7708	1	Nut
2	98-9453	1	Pulley-Dynamo
3	98-7709	1	Collar
4	99-7714	1	Frame-End, Drive
5	98-7717	2	Bolt-Through
6	98-7716	4	Screw-RH
7	98-7710	1	Rotor
8	98-7712	1	Bearing-Ball
9	98-7711	1	Cover-Bearing
10	98-7713	1	Washer-Thrust
11	98-7715	1	Plate-Retainer
12	98-7718	1	Bearing-Ball
13	98-7719	1	Frame-End
14	98-7730	2	Nut
15	98-7731	2	Bolt
16	98-7721	1	Rectifier ASM
17	98-7722	1	Bushing-Insulation
18	98-7732	1	Nut
19	98-7733	1	Regulator ASM
20	98-7726	2	Screw-RH
21	98-7728	1	Screw-RH
22	98-7729	3	Bolt
23	98-7720	1	Cover-End
24	98-7723	1	Holder-Brush
25	98-7725	2	Spring-Brush

Ref. No.	Part No.	Qty.	Description
26	98-7724	2	Brush
27	98-7727	6	Screw-RH



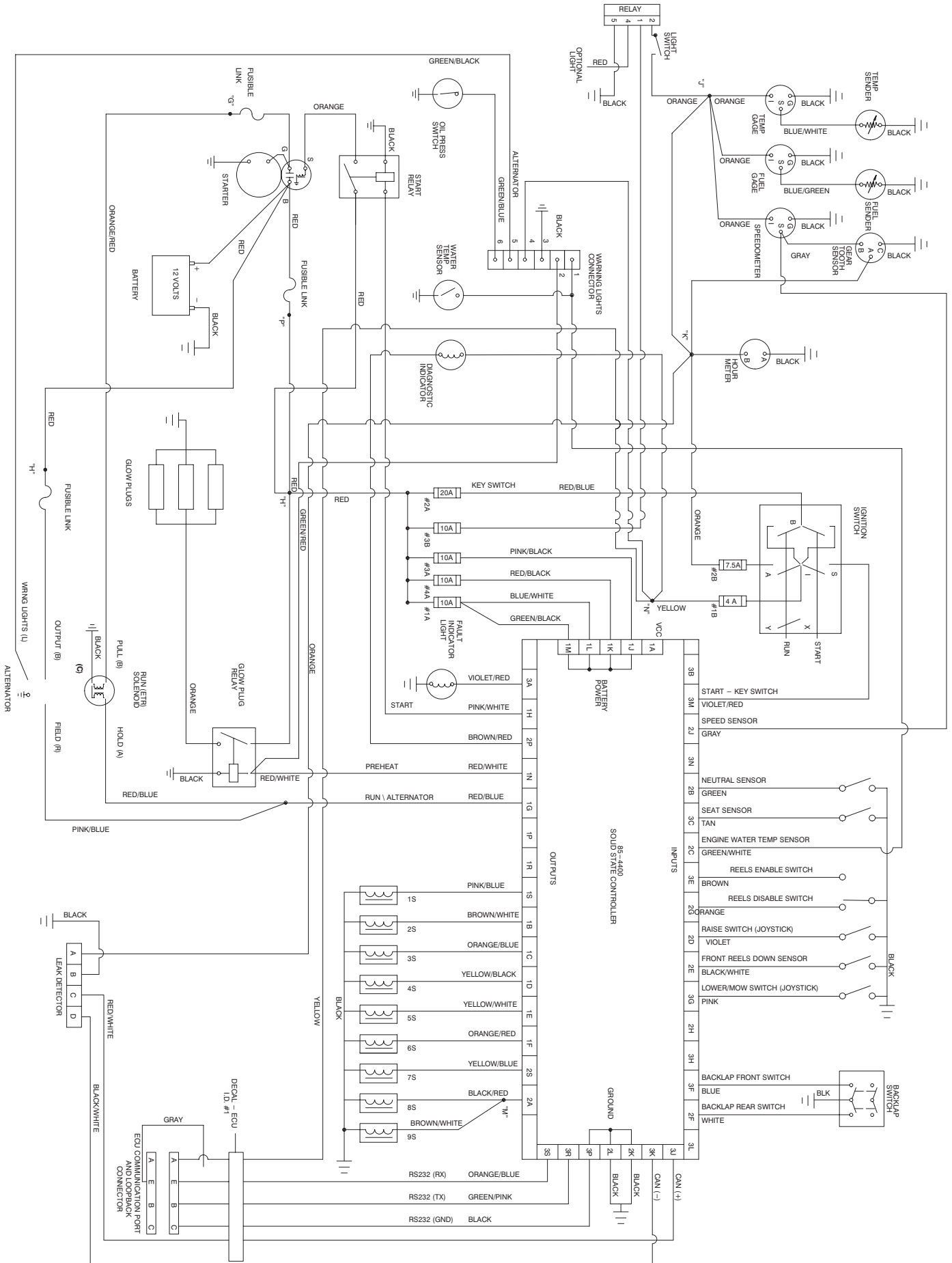
T-2931

Water Pump Assembly

Ref. No.	Part No.	Qty.	Description
1	98-9575	1	Water Pump ASM
2	98-9582	1	Flange-Pump, Water
3	98-9583	1	Bearing
4	98-9577	1	Pipe-Return, Water
5	98-9576	1	Seal ASM
6	98-9581	1	Impeller-Water
7	98-9632	1	Gasket-Pump, Water
8	98-9353	1	Bolt
9	98-9357	4	Bolt
10	98-9717	2	Clamp
11	98-9574	1	Pipe-Water
12	98-9716	1	Pipe-Water

Ref. No.	Part No.	Qty.	Description

Electrical Schematic



Electrical Schematic – Turfdefender

3323-627 Rev A

