



Hydraulic Valve Service Assembly

For Dingo[®] Compact Utility Loader

Part No. 98–2658

Parts Catalog

Ordering Replacement Parts

To order replacement parts, please supply: the part number, the quantity, and the description of each part desired.

Understanding Reference Numbers

Each identified part in an illustration has a reference number. The reference number for a part also appears in the parts list, along with other information about the part.

This catalog uses two special reference number formats, one to indicate parts in a service assembly and another to indicate the quantity of a given part in an illustration.

Service Assembly Reference Numbers

Parts in service assemblies have reference numbers in the form **a:b**. The **a** represents the reference number of the entire service assembly and the **b** represents a sequential number unique to each part within the service assembly.

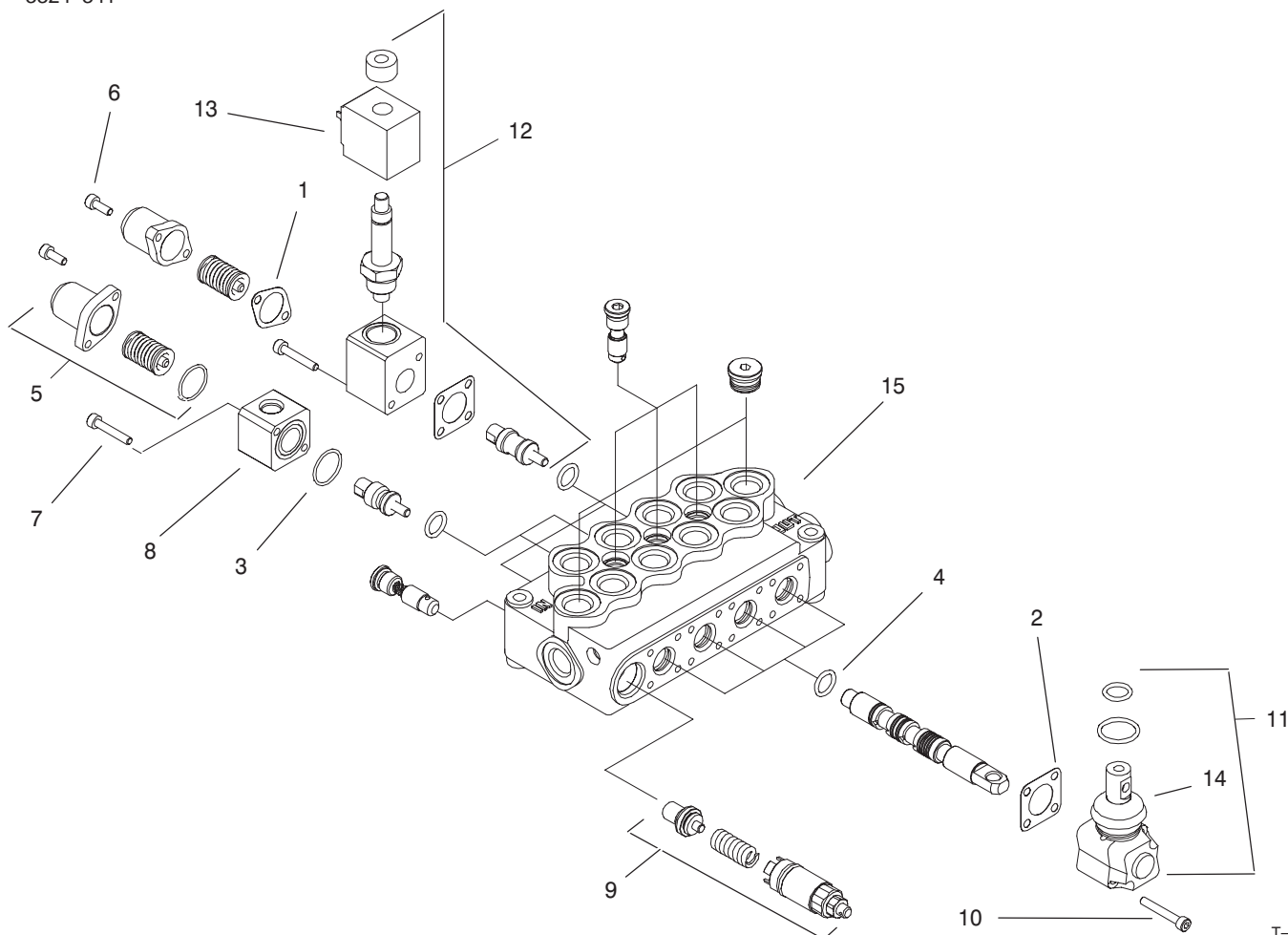
For example, a wheel assembly might be identified by reference number **6**, the tire by **6:1**, the valve by **6:2**, and the wheel by **6:3**. When you order the assembly identified by reference number **6**, you receive all parts identified by reference numbers **6:1**, **6:2**, and **6:3**. However, you may also order any part individually.

Reference numbers of this type appear in illustrations and in part lists.

Reference Numbers Indicating Quantity

In an illustration, if a reference number indicates more than one part, the reference number has the form **nX y**. The **n** represents the quantity of the part, the **X** is the multiplication symbol, and the **y** represents the reference number.

For example, in an illustration, the reference number **2X 37** means that two of the parts identified by reference number **37** are indicated.



T-2869

Hydraulic Valve Assembly No. 98-2658

Ref. No.	Part No.	Qty.	Description
1	99-3074	4	Gasket
2	99-3075	6	Gasket
†3		8	O-Ring
†4		1	O-Ring
5	100-8800	4	Spring Asm – Standard
*	100-8801	4	Spring Asm – High Force
6	100-8802	8	Screw – End Cap
7	100-8803	8	Screw – Body
8	100-8804	2	Block – Switch Mount
9	100-8805	1	Relief Valve
10	100-8806	8	Screw – Operator
11	100-8807	4	Operator Asm
12	100-8808	2	Spool Lock Asm
13	100-8809	2	Coil – Spool Lock
14	100-8829	4	Boot-Operator
15	99-3275	1	Valve-Hyd. 4 spool (Incl. Ref.# 2, 4-6, 9-11, 14)
*	99-4390	1	Seal Kit (Incl. Ref.# 1-4)
*	72-4310	2	Switch
*	98-2657	2	Adapter-Spool Lock

Ref. No.	Part No.	Qty.	Description

* Not illustrated

† Not Serviced Separately