



Wheel Horse® 16-38 Lawn Tractors

Model No. 77102—200000001 & Up
Model No. 77104—200000001 & Up

Set-Up Instructions

Loose Parts

Note: Use the chart below to verify all parts have been shipped.

DESCRIPTION	QTY.	USE
Bolt 1/4-20 x 3/4"	2	Install battery cables.
Wing nut	2	
Spring Hook	1	Used to install lift assist spring.
Key	2	Use in ignition and Key Choice™ switches
Washout Port Adapter	1	Use when washing underside of mower
Operator's Manual	1	Read and watch before operating tractor.
Engine Operator's Manual	1	
Safety Booklet	1	
Safety Video	1	
Registration Card	1	Fill out and mail the card.

Check Tire Pressure

Check front and rear tires for proper inflation. Refer to Operator's Manual Maintenance section under Tire Pressure for recommended inflation pressure.

Specifications for oil type, viscosity, and crankcase capacity. Add only enough oil to raise the level to the "FULL" mark on the dipstick.

Check Oil Level

The tractor is shipped from the factory with oil in the engine crankcase; however, it may be necessary to add oil. Refer to the Operator's Manual, Engine Oil

Check Battery

1. Locate the service expiration date information on the side of the battery.
2. If the expiration date has passed, the battery needs to be charged; refer to Charging the Battery in the Operator's Manual.

WARNING

POTENTIAL HAZARD

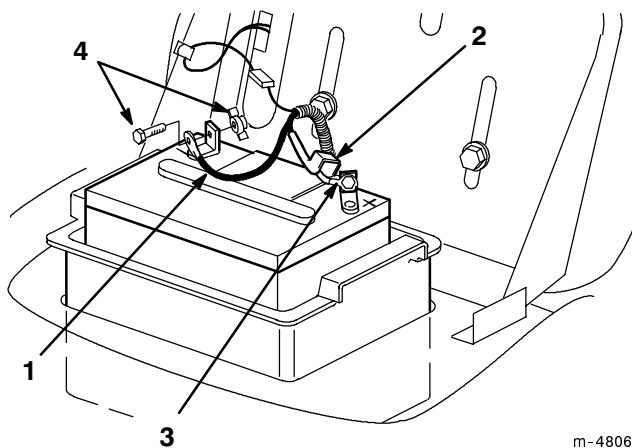
- Battery electrolyte contains sulfuric acid which is a deadly poison and will cause severe burns.

WHAT CAN HAPPEN

- If electrolyte gets onto your skin, you will be burned.

HOW TO AVOID THE HAZARD

- Do not attempt to open, add electrolyte, or service the battery.
- When handling battery, wear safety glasses to shield your eyes and rubber gloves to protect your hands.



m-4806

Figure 1

- | | |
|---------------------------|-------------------------|
| 1. Negative cable (black) | 3. Positive cable (red) |
| 2. Rubber cover | 4. Bolt and wing nut |

Attach Battery Cables

1. Remove and discard the cap from the positive (+) battery terminal.
2. Using the bolt and wing nut, connect the positive (red) cable to the positive (+) battery post (Fig. 1). Slide the rubber cover over the battery post.
3. Remove and discard the cap from the negative (-) battery terminal.
4. Using the bolt and wing nut, connect the negative (black) cable to the negative (-) battery post (Fig. 1).

Mower Discharge Chute

Remove roll pin from discharge chute spring and discard. This is for shipment only. Make sure spring returns discharge chute to the full down position.

Check Mower Adjustment

The mower deck was leveled at the factory. If mower is not cutting level, adjust side-to-side level and front-to-rear blade slope. See Operator's Manual for proper procedure.

Lubrication

Make sure all of the necessary points on the tractor are lubricated; refer to Greasing and Lubrication in the Operator's Manual.

Fill Fuel Tank

Add fuel to the fuel tank; refer to Filling the Fuel Tank in the Operator's Manual.

Insert Keys into Ignition and Key Choice™ Switches

The Key Choice switch is located on the seat bracket in front of and below the seat.

Check Safety System

Refer to the Operator's Manual, Checking Safety System.

Purge Hydro Transaxle (Hydro Drive Tractors Only)

During handling and shipping air can be introduced into the hydro transaxle. To achieve proper performance all trapped air must be removed.

1. Place tractor on a flat level surface.
2. Place the drive control in the "Push" position (Fig. 2).

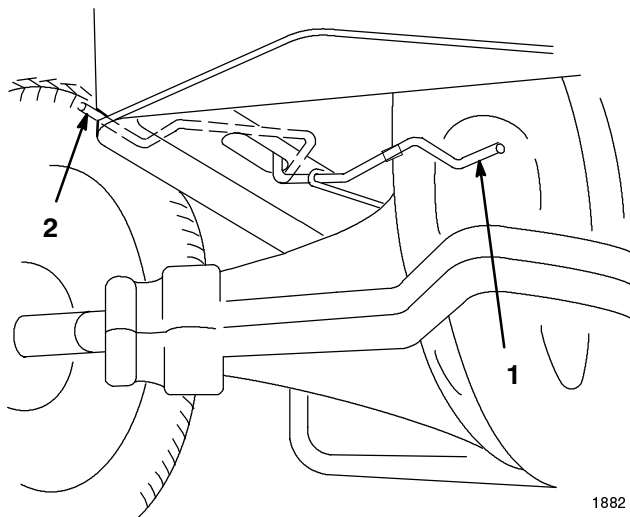


Figure 2

1. Operate position 2. Push position

3. Run engine at a low idle and move traction control pedal forward for five (5) seconds then reverse for five (5) seconds. Repeat three (3) times.

4. Place the drive control in the "Operate" position (Fig. 2). Drive the tractor forward then reverse approximately five (5) feet. Repeat three (3) times.

Check Hydro Neutral Position (Hydro Drive Tractors Only)

Ensure the neutral position is set properly. Adjustment is required if the tractor creeps without the traction control pedal being depressed.

1. Run engine at a low idle and move traction control pedal forward, then release. Move traction control pedal reverse, then release. If the tractor creeps adjust as follows:
2. With the engine off, raise the rear wheels off the ground and support with jackstands.
3. Loosen locknut securing adjustment (Fig. 3).
4. Move adjustment stud up or down until creep is minimized (Fig. 3). There may still be some wheel rotation with wheels off the ground.
5. Tighten the locknut (Fig. 3). Move the traction control pedal forward and reverse and allow it to center. Verify that there is no creep with the wheels on the ground.

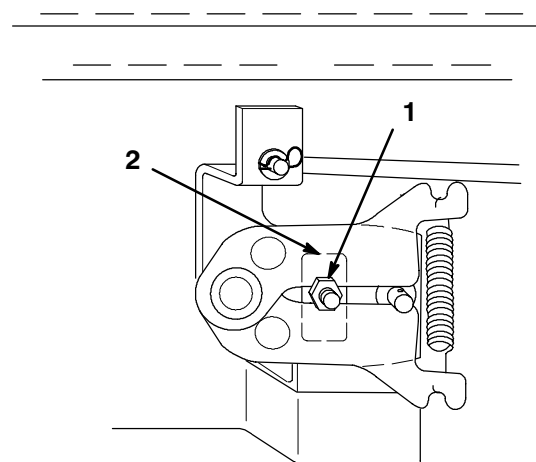


Figure 3

1. Locknut 2. Adjustment stud

Check Traction Control Pedal (Hydro Drive Tractors Only)

After adjusting the hydro neutral position, it is necessary to check the traction control pedal. Shut the engine off. Press the control pedal full forward and full reverse. The Transaxle linkage must contact the stop(s) before the control pedal hits the footrest pad (Fig. 4). If contact is made with the foot pad, before hitting stop(s) on transaxle, in either forward or reverse directions, adjustment is required.

1. Loosen the capscrews below the right footrest. Slide the pedal in the slots away from the direction that made contact with the footrest (Fig. 4).
2. Tighten capscrews and recheck traction control pedal for contact with the stop(s) on the transaxle and footrest.

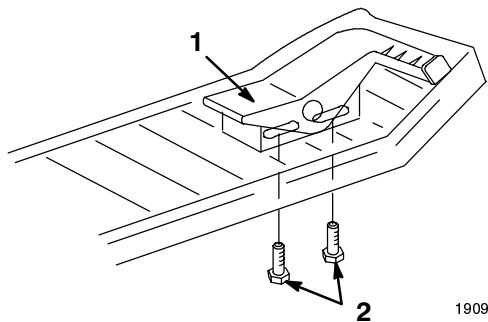


Figure 4

1. Traction control pedal
2. Adjusting capscrews

Check Shift Cable Adjustment (Gear Drive Tractors Only)

Cable adjustment is required if the ground speed selector lever does not move firmly toward the numbers on the shift plate when released or it is difficult to shift between gears on-the-go (Fig. 5).

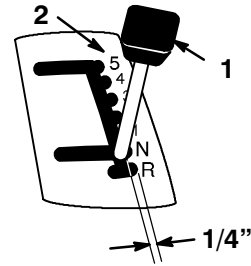


Figure 5

1. Gear select lever
2. Numbers

1. If either of the above conditions exist, turn the engine off and check that the belt guides are positioned no more than 1/8" away from the engine and transmission pulleys.
2. Check the cable tension. Cable should be taught and have 1/2" movement with slight pressure applied (Fig. 6).
3. Move gear select lever and note gap between lever and edge of gate. There should be about 1/4" of free play before cable is taught (Fig. 5).
4. To adjust the cable tension loosen the front cable guide, located on tractor brace above deck pulley. Slide guide sideways as required for proper tension (Fig. 6).

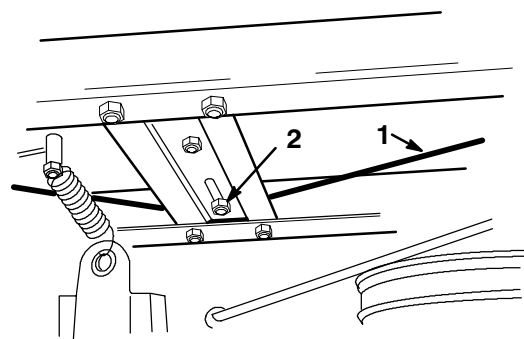


Figure 6

1. Cable
2. Cable guide

Test Drive the Tractor

Make sure all electrical and mechanical systems are operating properly. See Operator's Manual for proper control function.