



## Wheel Horse® 17-44 Lawn Tractor

Model No. 77106—200000001 & Up

### Set-Up Instructions

## Loose Parts

**Note:** Use the chart below to verify all parts have been shipped.

DESCRIPTION	QTY.	USE
Bolt 1/4-20 x 3/4"	2	Install battery cables.
Wing nut	2	
Grass Deflector	1	Install grass deflector.
Spring	2	
Bolt 3/8-24 x 3-1/2"	2	
Lock nut 3/8"	2	
Spring Hook	1	Used to install lift assist spring.
Key	2	Use in ignition and Key Choice™ switches
Washout Port Adapter	1	Use when washing underside of mower
Operator's Manual	1	Read and watch before operating tractor.
Engine Operator's Manual	1	
Safety Booklet	1	
Safety Video	1	
Registration Card	1	Fill out and mail the card.

## Check Tire Pressure

Check front and rear tires for proper inflation. Refer to Operator's Manual Maintenance section under Tire Pressure for recommended inflation pressure.

## Check Oil Level

The tractor is shipped from the factory with oil in the engine crankcase; however, it may be necessary to add oil. Refer to the Operator's Manual, Engine Oil Specifications for oil type, viscosity, and crankcase capacity. Add only enough oil to raise the level to the "FULL" mark on the dipstick.

## Check Battery

1. Locate the service expiration date information on the side of the battery.
2. If the expiration date has passed, the battery needs to be charged; refer to Charging the Battery in the Operator's Manual.

### **WARNING**

#### **POTENTIAL HAZARD**

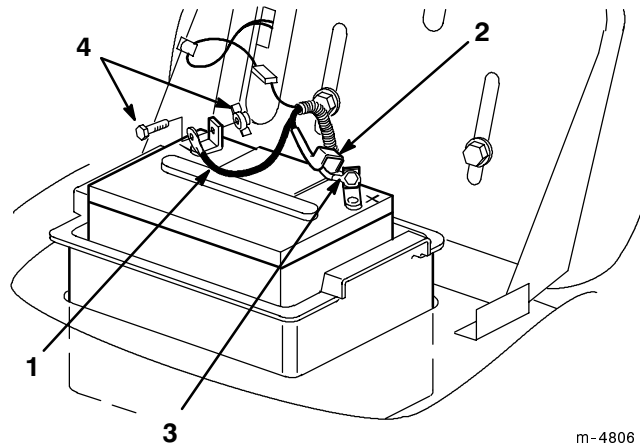
- **Battery electrolyte contains sulfuric acid which is a deadly poison and will cause severe burns.**

#### **WHAT CAN HAPPEN**

- **If electrolyte gets onto your skin, you will be burned.**

#### **HOW TO AVOID THE HAZARD**

- **Do not attempt to open, add electrolyte, or service the battery.**
- **When handling battery, wear safety glasses to shield your eyes and rubber gloves to protect your hands.**



m-4806

**Figure 1**

- |                           |                         |
|---------------------------|-------------------------|
| 1. Negative cable (black) | 3. Positive cable (red) |
| 2. Rubber cover           | 4. Bolt and wing nut    |

## Attach Discharge Chute

1. Place springs into brackets on mower with hooked ends over raised back (Fig. 2).
2. Align grass deflector with holes in brackets and spring straight ends in space under hinge and above deflector (Fig. 2).
3. Secure deflector to bracket with bolts through grass deflector, springs and brackets. Secure with lock nuts (Fig. 2).

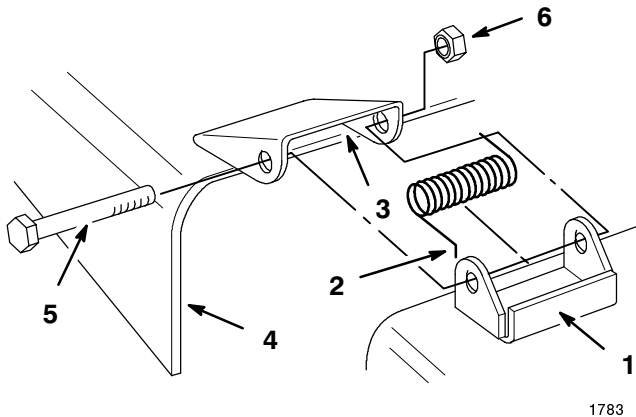
**Note:** It may be helpful to press down near the end of the bolt with a 9/16 open end wrench to align the bolt with the second holes on the bracket and grass deflector.

4. Lift grass deflector and check that it is spring loaded and pivots freely to the full down position.

**IMPORTANT: Grass deflector must be spring loaded in the down position. Lift deflector up to test that it snaps to the full down position.**

## Attach Battery Cables

1. Remove and discard the cap from the positive (+) battery terminal.
2. Using the bolt and wing nut, connect the positive (red) cable to the positive (+) battery post (Fig. 1). Slide the rubber cover over the battery post.
3. Remove and discard the cap from the negative (-) battery terminal.
4. Using the bolt and wing nut, connect the negative (black) cable to the negative (-) battery post (Fig. 1).

**Figure 2**

- |                     |                    |
|---------------------|--------------------|
| 1. Bracket          | 4. Grass deflector |
| 2. Spring hook end  | 5. Bolt            |
| 3. Space for spring | 6. Lock nut        |

## Check Mower Adjustment

The mower deck was leveled at the factory. If mower is not cutting level, adjust side-to-side level and front-to-rear blade slope. See Operator's Manual for proper procedure.

## Lubrication

Make sure all of the necessary points on the tractor are lubricated; refer to Greasing and Lubrication in the Operator's Manual.

## Fill Fuel Tank

Add fuel to the fuel tank; refer to Filling the Fuel Tank in the Operator's Manual.

## Insert Keys into Ignition and Key Choice™ Switches

The Key Choice switch is located on the seat bracket in front of and below the seat.

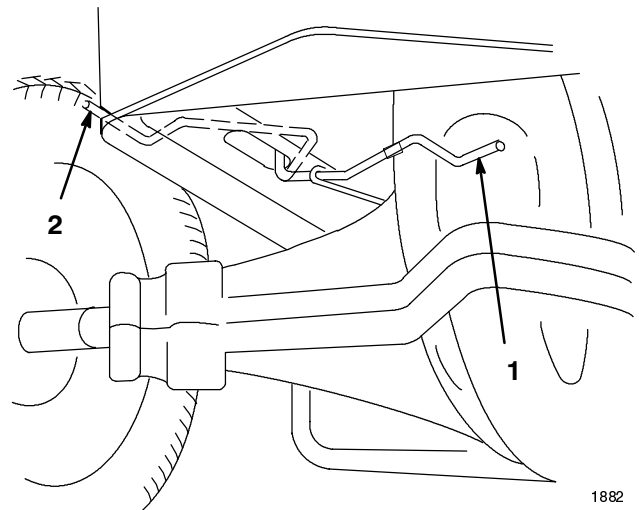
## Check Safety System

Refer to the Operator's Manual, Checking Safety System.

## Purge Hydro Transaxle

During handling and shipping air can be introduced into the hydro transaxle. To achieve proper performance all trapped air must be removed.

1. Place tractor on a flat level surface.
2. Place the drive control in the "Push" position (Fig. 3).

**Figure 3**

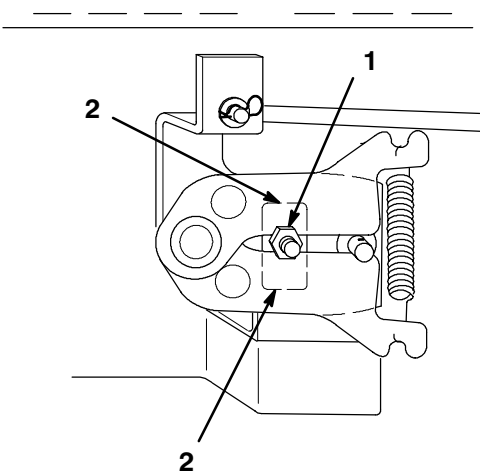
1. Operate position
2. Push position

3. Run engine at a low idle and move traction control pedal forward for five (5) seconds then reverse for five (5) seconds. Repeat three (3) times.
4. Place the drive control in the "Operate" position (Fig. 3). Drive the tractor forward then reverse approximately five (5) feet. Repeat three (3) times.

## Check Hydro Neutral Position

Ensure the neutral position is set properly. Adjustment is required if the tractor creeps without the traction control pedal being depressed.

1. Run engine at a low idle and move traction control pedal forward, then release. Move traction control pedal reverse, then release. If the tractor creeps adjust as follows:
2. With the engine off, raise the rear wheels off the ground and support with jackstands.
3. Loosen locknut securing adjustment (Fig. 4).
4. Move adjustment stud up or down until creep is minimized (Fig. 4). There may still be some wheel rotation with wheels off the ground.
5. Tighten the locknut (Fig. 4). Move the traction control pedal forward and reverse and allow it to center. Verify that there is no creep with the wheels on the ground.



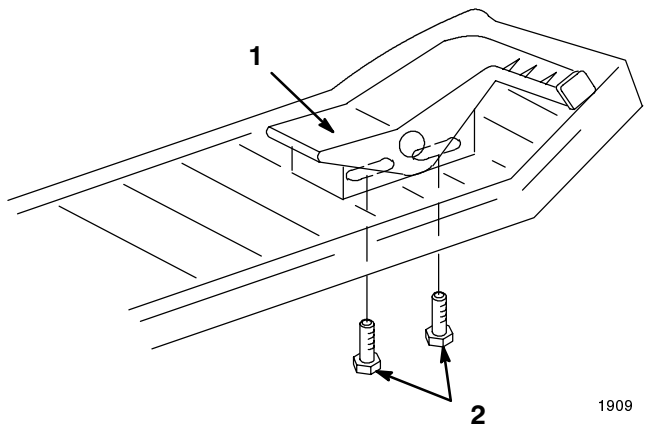
**Figure 4**

1. Locknut
2. Stop

## Check Traction Control Pedal

After adjusting the hydro neutral position, it is necessary to check the traction control pedal. Shut the engine off. Press the control pedal full forward and full reverse. The Transaxle linkage must contact the stop(s) before the control pedal hits the footrest pad (Fig. 4). If contact is made with the foot pad, before hitting stop(s) on transaxle, in either forward or reverse directions, adjustment is required.

1. Loosen the capscrews below the right footrest. Slide the pedal in the slots away from the direction that made contact with the footrest (Fig. 5).
2. Tighten capscrews and recheck traction control pedal for contact with the stop(s) on the transaxle and footrest.



**Figure 5**

1. Traction control pedal
2. Adjusting capscrews

## Test Drive the Tractor

Make sure all electrical and mechanical systems are operating properly. See Operator's Manual for proper control function.