



Steel Over-the-Tire Tracks

Model 22665

Installation
Instructions

IMPORTANT: Before using this product, read the safety section in your traction unit operator's manual, and follow all precautions listed there.

Loose Parts

DESCRIPTION	QTY.	USE
Pivot pin	2	Install on loader arm hydraulic cylinders
Hex set-screw	2	
Grease fitting	2	
Spacer	2	
Torx screw	2	
Wheel spacers	4	Install on wheels
Lug nuts (20 provided with the wheel spacers and 20 on the traction unit)	40	
Over-the-tire tracks (2 tracks joined as 1)	1	Install on traction unit
Bolt	2	
Locknut	2	
Installation tool	1	

Installation

IMPORTANT: The tracks must only be installed over the Sitework Systems or turf tread tires. Installation over any other type of tire may result in damage to the machine.

IMPORTANT: If you want to install the tracks on a Dingo[®] traction unit with model number 22300 or 22302, you must order a different set of wheel spacers than those supplied. Contact your dealer for more information.

Installing Pivot Pins

1. Lower the loader arms as low as possible.
2. Turn the traction unit off and remove the key.

- Remove the existing pivot pin from the bottom of a loader arm hydraulic cylinder (Fig. 1). Retain the pin for use when removing the tracks.

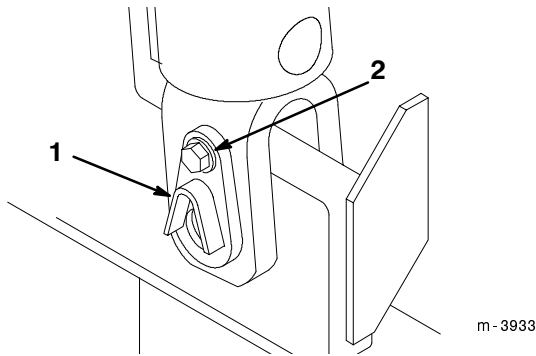


Figure 1

- Pivot pin
- Bolt

- Install the new pivot pin using the screw and spacer (Fig. 2).

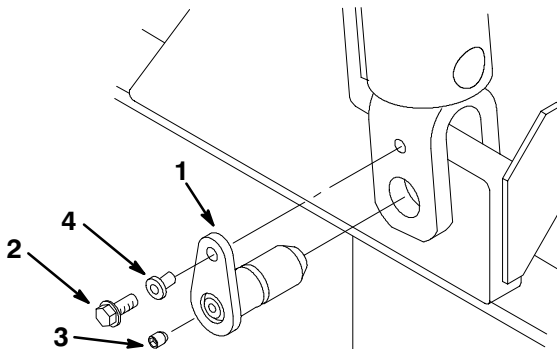


Figure 2

- Pivot pin
- Torx screw
- Hex set-screw
- Spacer

- Thread a grease fitting into the opening in the face of the new pivot pin.
- Connect a grease gun to the fitting. Pump grease into the fitting until grease begins to ooze out of the bearing.
- Wipe up any excess grease.
- Remove the grease fitting and replace it with the hex set-screw (Fig. 2).
- Repeat steps 3 through 8 for the other loader arm hydraulic cylinder.
- Store the grease fittings for future use (refer to Greasing Pivot Pins, page 4).

Installing Wheel Spacers

IMPORTANT: If you are installing the tracks on a Dingo model 22300 or 22302, you need different wheel spacers than those provided with the tracks. Contact your dealer to obtain the spacers.

- Lift/support the traction unit so that the wheels are off of the ground. Refer to your traction unit operator's manual for information on lifting the traction unit.
- Slide the wheel spacers onto the studs on the wheel hub and secure them with lug nuts (Fig. 3). Torque the lug nuts to 55 ft-lbs (75 N·m).
- Install the wheels on the studs on the wheel spacers and secure them with lug nuts (Fig. 3). Torque the lug nuts to 55 ft-lbs (75 N·m).

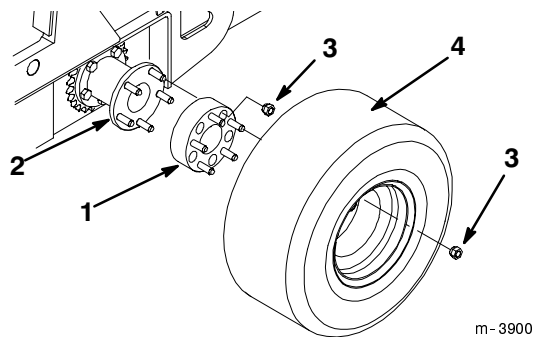


Figure 3

- Wheel spacer
- Wheel hub
- Lug nut
- Wheel

- Return the traction unit to the ground.
- After the first 8 hours of operation, torque the lug nuts again to 55 ft-lbs (75 N·m).

Installing the Tracks

! **CAUTION** !

POTENTIAL HAZARD

- Some areas of the tracks have sharp edges and moving parts that can pinch.

WHAT CAN HAPPEN

- You could be cut or pinched while handling the tracks.

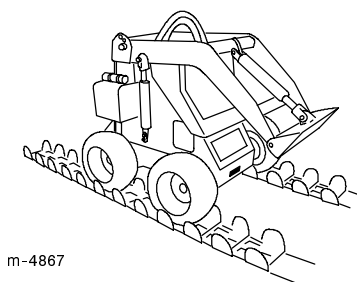
HOW TO AVOID THE HAZARD

- Wear leather gloves while handling the tracks.

- Lay the track flat with the inside of the track facing up.

2. Remove the long bolt and nut from the center of the track at the link marked by a tag.
3. Lay both tracks in front of the traction unit wheels.
4. Start the traction unit and drive it forward onto the tracks (Fig. 4).

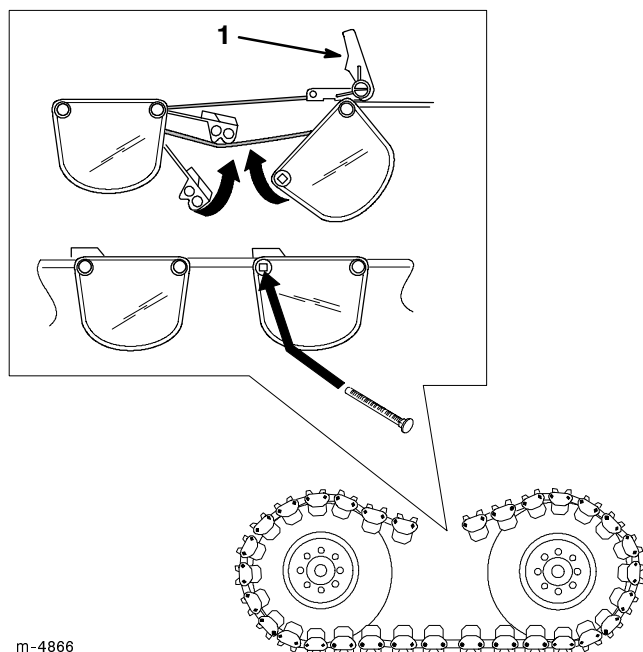
IMPORTANT: Ensure that the wheels are centered in the tracks as you drive forward to avoid damaging the tracks or tires.



m-4867

Figure 4

5. When the traction unit is in the center of the tracks, stop the engine and remove the key.
6. Pull the front and rear of a track up and over the tires and secure them with the installation tool (Fig. 5).



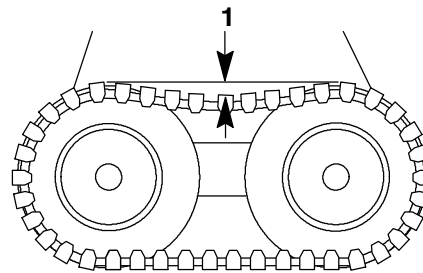
m-4866

Figure 5

1. Installation tool

7. Tighten the installation tool until the track is tight.

8. Connect the track by installing a bolt and locknut through the connector links on the track.
9. Remove the installation tool.
10. Repeat steps 6 through 9 for the other track.
11. Drive the traction unit for a few minutes to loosen the tracks.
12. Lay a long, straight bar across the top of each track. There should be 1 to 3 in. (25 to 76 cm) of slack in the top span of the track below the bar (Fig. 6).



m-3898

Figure 6

1. 1 to 3 in. (25 to 76 cm)



13. If there is too much or too little slack in the track, adjust the track tension; refer to Adjusting Track Tension, page 4.

Removing the Tracks

1. Remove a bolt and nut from the connector links and lay the track flat.
2. Drive slowly off of the track.
3. Place the bolt and nut in the holes in the track for storage.
4. Repeat steps 1 through 3 for the other track.

Note: You do not need to remove the spacers.

Operating Tips

 WARNING 
POTENTIAL HAZARD <ul style="list-style-type: none">• The moving tracks can pinch hands or feet.
WHAT CAN HAPPEN <ul style="list-style-type: none">• Injury or amputation could result.
HOW TO AVOID THE HAZARD <ul style="list-style-type: none">• Keep yourself and bystanders clear of the tracks during operation.

Avoid operating on asphalt or concrete surfaces as damage may occur to the surface, as well as excessive wear on the tracks.

Maintenance

Greasing Pivot Pins

Grease the new pivot pins on the hydraulic cylinders yearly. To grease the pivot pins installed with the tracks, complete the following procedure:

1. Lower the loader arms as far as possible.
2. Turn the traction unit off and remove the key.
3. Clean the face of each pivot pin with a rag.
4. Remove the hex set-screws from the center of the pivot pins.
5. Thread the grease fittings into the openings vacated by the set-screws.
6. Connect a grease gun to each fitting. Pump grease into the fittings until it begins to ooze out of the bearings.
7. Wipe up any excess grease.
8. Remove the grease fittings and replace them with the hex set-screws.

Adjusting Track Tension

Check the tension of the tracks every 25 operating hours by laying a long, straight bar across the top of each track. There should be 1 to 3 in. (25 to 76 cm) of slack in the top span of the track below the bar (Fig. 6). If the track needs adjustment, complete the following procedure:

Note: When checking the tension, ensure that the traction unit tires are fully inflated.

Note: When you adjust the traction drive chain (if your traction unit has traction drive chains), the track may also need to be adjusted.

1. Park the traction unit so that one set of the bolted connector links is in the middle of the top span.
2. Install the installation tool and tighten the track.
3. Remove the bolt and nut securing the track and install them through the inner holes of the track section to tighten the track.

Note: To loosen the track you can move a connector installed in an inner hole to the outer hole.

4. Remove the installation tool.
5. Check the track tension and repeat steps 1 and 2 for one of the other adjustable track sections if additional tensioning is required.

Storage

Before storing the tracks for more than 30 days, complete the following procedure:

1. Wash the tracks with a mild detergent and water.
2. Check the condition of the track and tires. Replace any part that is damaged or worn.
3. Store the tracks in a clean, dry area. Cover them to protect them and keep them clean.