



14" Trim & Edge

String Trimmer

Model No. 51350—200000001 and Up

Parts Catalog

Ordering Replacement Parts

To order replacement parts, please supply: the part number, the quantity, and the description of each part desired.

Understanding Reference Numbers

Each identified part in an illustration has a reference number. The reference number for a part also appears in the parts list, along with other information about the part.

This catalog uses two special reference number formats, one to indicate parts in a service assembly and another to indicate the quantity of a given part in an illustration.

Service Assembly Reference Numbers

Parts in service assemblies have reference numbers in the form **a:b**. The **a** represents the reference number of the entire service assembly and the **b** represents a sequential number unique to each part within the service assembly.

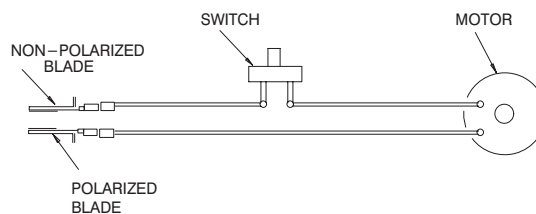
For example, a wheel assembly might be identified by reference number **6**, the tire by **6:1**, the valve by **6:2**, and the wheel by **6:3**. When you order the assembly identified by reference number **6**, you receive all parts identified by reference numbers **6:1**, **6:2**, and **6:3**. However, you may also order any part individually.

Reference numbers of this type appear in illustrations and in part lists.

Reference Numbers Indicating Quantity

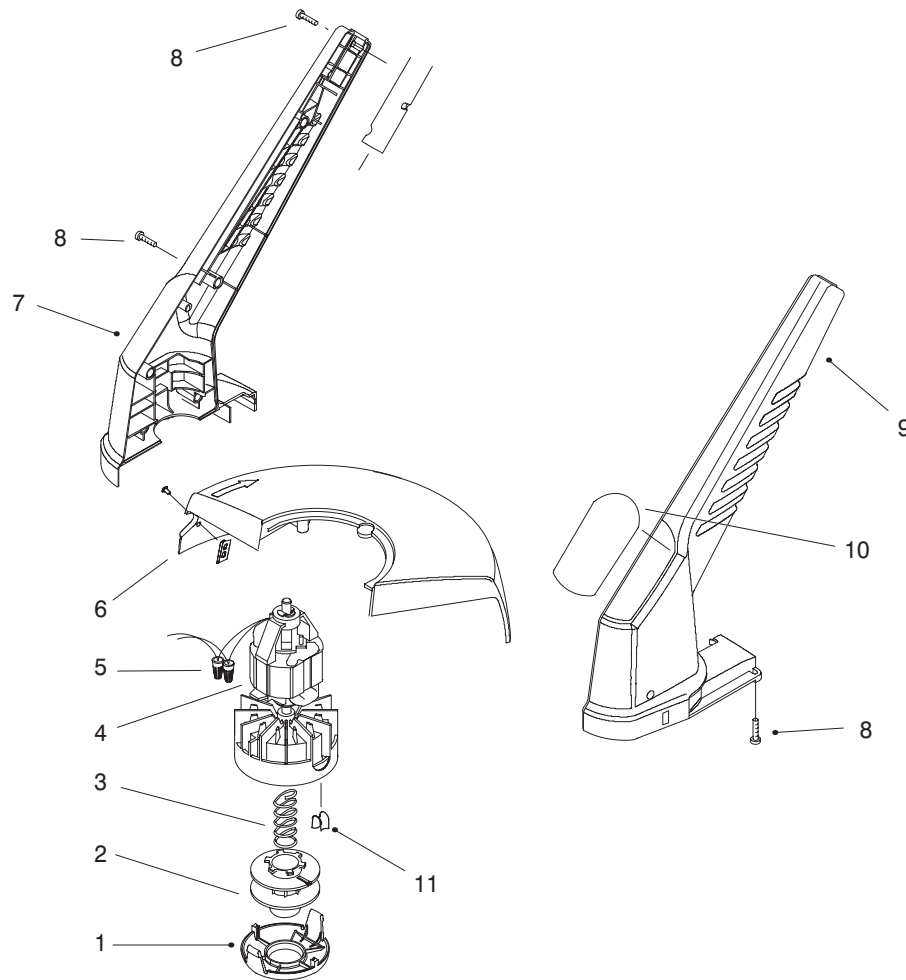
In an illustration, if a reference number indicates more than one part, the reference number has the form **nX y**. The **n** represents the quantity of the part, the **X** is the multiplication symbol, and the **y** represents the reference number.

For example, in an illustration, the reference number **2X 37** means that two of the parts identified by reference number **37** are indicated.



Handle Assembly

Ref. No.	Part No.	Qty.	Description



Sheet No.:3

Trimmer Assembly

Ref. No.	Part No.	Qty.	Description
1	73-8200	1	Cap
2	73-8190	1	Spool – Large
3	73-8220	1	Spring – Compression
4	73-9052	1	ASM-Motor, Drum- ervice
5	73-6570	2	Connector-Wire Nut
6	73-9092	1	Shield ASM – Service
7	100-1246	1	Housing-RH (Black)
8	94-4496	8	Screw-PPH
9	100-1245	1	Housing-LH (Black)
10	100-1249	1	Decal-14" Trim 'n Edge
11	73-8210	1	Eyelet
*	73-8490	1	.065 Spool Assy (88175,6,7)

Ref. No.	Part No.	Qty.	Description

* Not illustrated

