



**ROPS Kit**  
**TimeCutter® Riding Mower**  
Model No. 79485

Form No. 3438-540 Rev A

**Installation Instructions**

---

# Safety

## Rollover Protection System (ROPS) Safety

- The ROPS is an integral safety device. Do not remove any of the ROPS components from the machine.
- Ensure that the seat belt is attached and that you can release it quickly in an emergency.
- Always wear your seat belt when the roll bar is installed.
- Check carefully for overhead objects before you drive under them, and do not contact them.
- Keep the roll bar in safe operating condition by thoroughly inspecting it periodically for damage and keeping all the mounting fasteners tight.
- Replace damaged ROPS components. Do not repair or alter them.
- Wheels dropping over edges, over steep banks, or into water can cause a rollover, which may result in serious injury or death.
- Do not wear the seat belt when the roll bar is not installed.
- In the event of a rollover, take the machine to an Authorized Service Dealer to inspect the ROPS.
- Use only Toro approved accessories and attachments for the ROPS.



# Installation

## Loose Parts

Use the chart below to verify that all parts have been shipped.

Procedure	Description	Qty.	Use
<b>1</b>	No parts required	–	Prepare the machine.
<b>2</b>	Left ROPS mount Right ROPS mount Bolt (1/2 x 1-1/4 inches) Large washer Locknut (1/2 inch) Belt guard panel Rear guard panel Cable tie Narrow push rivet Wide push rivet	1 1 6 6 6 2 1 2 4 2	Install the ROPS mounts and guard panels.
<b>3</b>	Left seat belt bracket (MyRide machines only) Right seat belt bracket (MyRide machines only) Partial-thread bolt (3/8 x 2 inches) Small washer Locknut (3/8 inch) Left pod bracket Bumper Right pod bracket (MyRide machines only) Thread-forming screw (5/16 x 3/4 inch) Seat belt tongue assembly Seat belt buckle assembly Carriage screw (7/16 x 1 inch) Locknut (7/16 inch)	1 1 2 2 2 1 1 1 1 3 1 1 2 2	Install the pod brackets and seat belt brackets (MyRide-equipped machines only).
<b>4</b>	Seat belt tongue assembly Seat belt buckle assembly Carriage screw (7/16 x 1 inch) Locknut (7/16 inch) Seat belt bracket (machines without MyRide only) Bolt (3/8 x 1 inch) Locknut (3/8 inch) Left pod bracket Bumper Right pod bracket (machines without MyRide only) Thread-forming screw (5/16 x 3/4 inch)	1 1 2 2 2 4 4 1 1 1 1 4	Install the pod brackets and seat belt brackets (machines without MyRide only).
<b>5</b>	ROPS tube Bolt (3/8 x 2-1/2 inches) Locknut (3/8 inch) Suitcase weight (For machines with a bagger installed only) Bolt (3/8 x 3-3/4 inches)	1 2 2 4 2	Complete the installation.

# 1

## Preparing the Machine

No Parts Required

### Procedure

**Note:** Determine the left and right sides of the machine from the normal operating position.

**Note:** You may discard all removed parts unless otherwise noted.

1. Park the machine on a level surface.
2. Disengage the blade-control switch.
3. Move the motion-control levers outward to the NEUTRAL-LOCK position to engage the parking brake.
4. Shut off the engine and remove the key.
5. Raise the seat, refer to your machine *Operator's Manual*.
6. Raise the rear of the machine on jack stands; refer to your machine *Operator's Manual*.

### ⚠ WARNING

Supporting the machine on the lower muffler shield ([Figure 1](#)) may damage the shield and cause the machine to fall, injuring you or bystanders.

Do not use the lower muffler shield to support the machine.

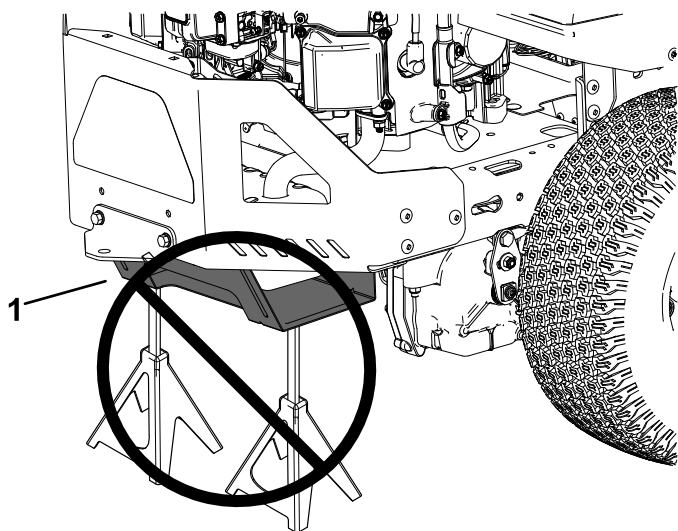
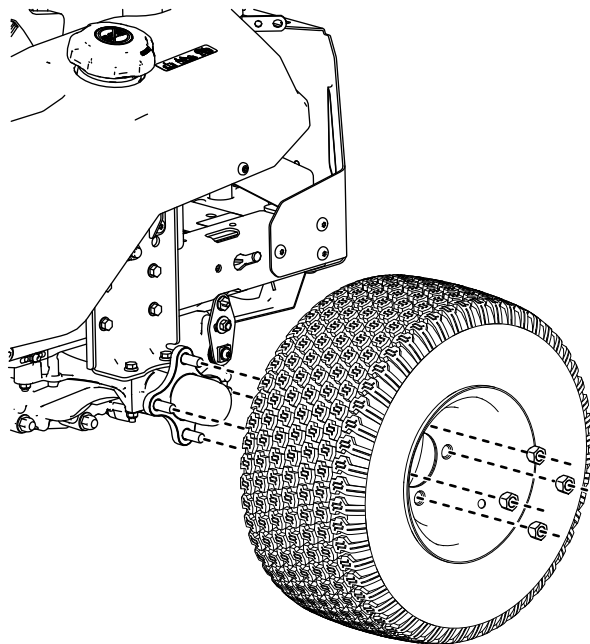


Figure 1

1. Lower muffler shield

7. Remove the rear tires as shown in [Figure 2](#)

**Note:** Retain all wheel components for later installation.

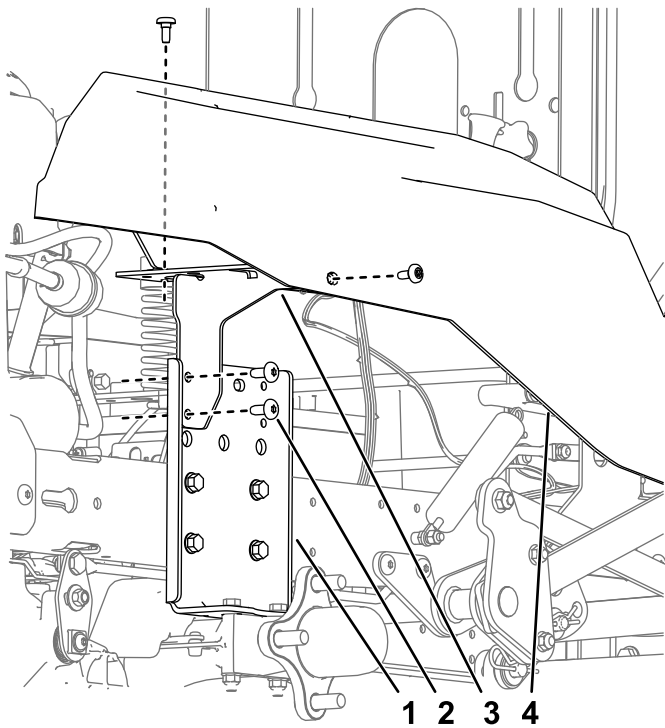


g309984

Figure 2

8. Remove the pod brackets from the machine (Figure 3).

**Note:** Retain the shoulder screws removed from the sides of the pods for later installation.

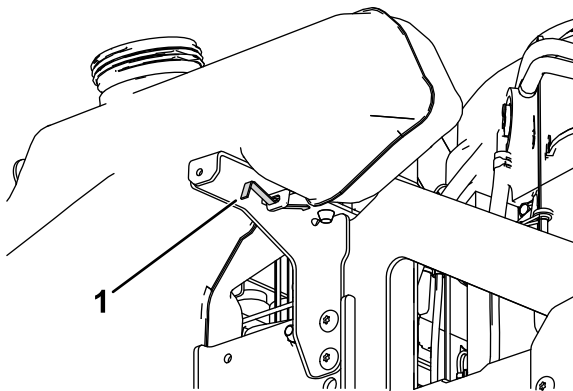


g310040

**Figure 3**

- |                          |                        |
|--------------------------|------------------------|
| 1. Hydraulic mount plate | 3. Pod support bracket |
| 2. Screw                 | 4. Pod                 |

**Note:** Retain the fuel tank spring beneath that secures the fuel tank to the left pod bracket for later installation.



g310231

**Figure 4**

1. Fuel tank spring

# 2

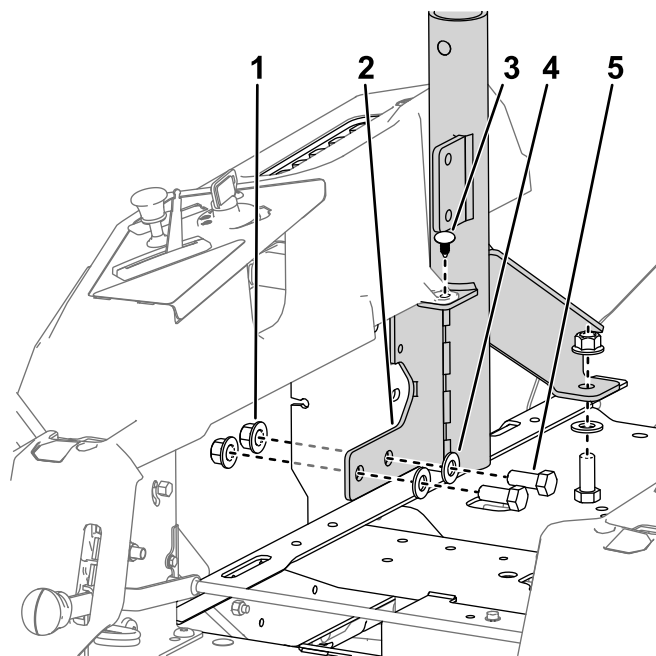
## Installing the ROPS Mounts and Guard Panels

### Parts needed for this procedure:

1	Left ROPS mount
1	Right ROPS mount
6	Bolt (1/2 x 1-1/4 inches)
6	Large washer
6	Locknut (1/2 inch)
2	Belt guard panel
1	Rear guard panel
2	Cable tie
4	Narrow push rivet
2	Wide push rivet

### Procedure

1. Install the ROPS mounts to the machine frame behind the hydraulic mount plate as shown in [Figure 5](#).
2. Torque the bolts to 58 to 77 N·m (43 to 57 ft-lb).
3. Secure the tabs on the pods to the ROPS mount with narrow push rivets ([Figure 5](#)).
4. Install the teeth of the rear guard panel to the notches in the center frame and secure it with cable ties as shown in [Figure 6](#).
5. Install the belt guard panels to the frame with push rivets as shown in [Figure 6](#).

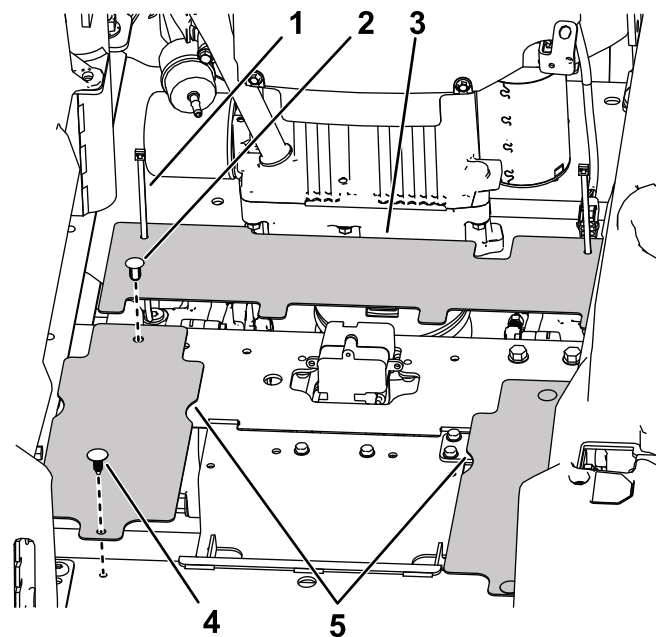


g316031

**Figure 5**

Right side shown

1. Locknut (1/2 inch)
2. Right ROPS mount
3. Narrow push rivet
4. Large washer
5. Bolt (1/2 x 1-1/4 inches)



g310120

**Figure 6**

1. Cable tie
2. Wide push rivet
3. Rear guard panel
4. Narrow push rivet
5. Belt guard panels

# 3

## Installing the Pod Brackets and Seat Belt

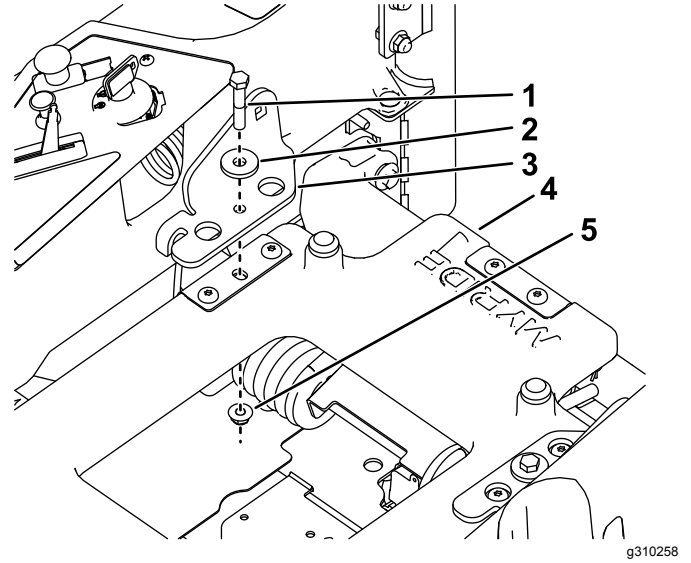
### MyRide-Equipped Machines Only

#### Parts needed for this procedure:

1	Left seat belt bracket (MyRide machines only)
1	Right seat belt bracket (MyRide machines only)
2	Partial-thread bolt (3/8 x 2 inches)
2	Small washer
2	Locknut (3/8 inch)
1	Left pod bracket
1	Bumper
1	Right pod bracket (MyRide machines only)
3	Thread-forming screw (5/16 x 3/4 inch)
1	Seat belt tongue assembly
1	Seat belt buckle assembly
2	Carriage screw (7/16 x 1 inch)
2	Locknut (7/16 inch)

## Procedure

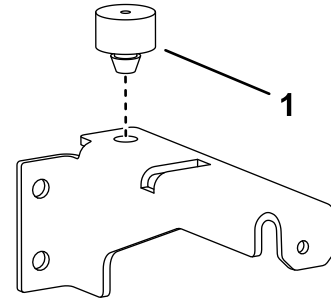
1. Install the seat belt brackets to the seat platform with 2 partial-thread bolts (3/8 x 2 inches), 2 small washers, and 2 locknuts (3/8 inch) as shown in [Figure 7](#).



**Figure 7**

1. Partial-thread bolts (3/8 x 2 inches)
2. Small washer
3. Seat belt bracket
4. MyRide platform
5. Locknut (3/8 inch)

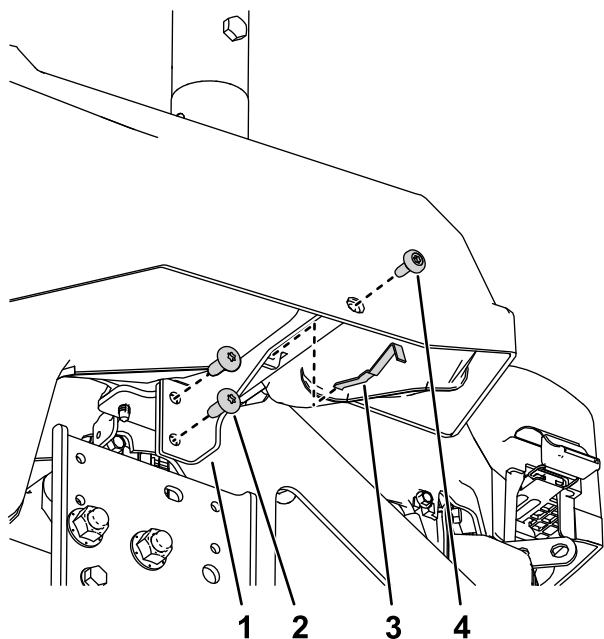
2. Install the bumper to the left pod bracket ([Figure 8](#)).



**Figure 8**

1. Bumper

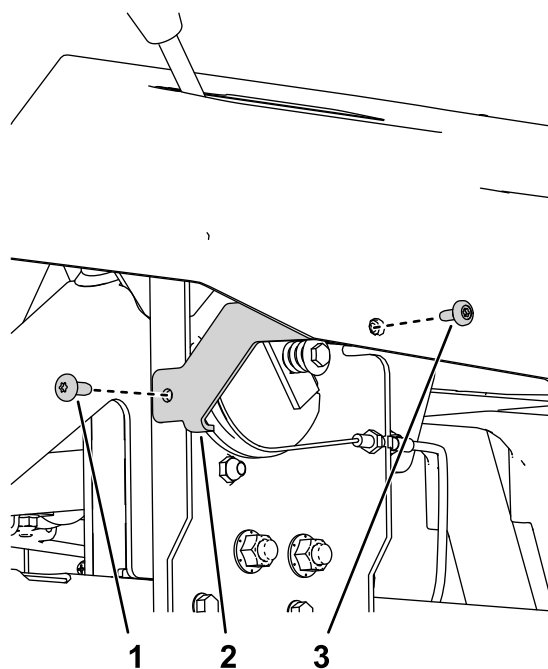
3. Install the left pod bracket to the machine frame using 2 thread-forming screws (5/16 x 3/4 inch) and the parts removed in [1 Preparing the Machine \(page 3\)](#) as shown in [Figure 9](#).



**Figure 9**

- |   |                     |
|---|---------------------|
| 1. Left pod bracket                       | 3. Fuel-tank spring |
| 2. Thread-forming screw (5/16 x 3/4 inch) | 4. Shoulder bolt    |

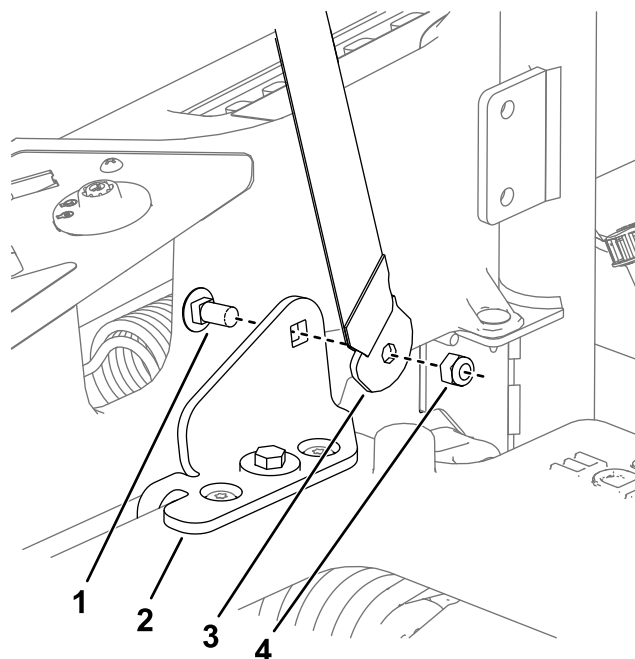
4. Install new right pod bracket to the machine using a thread-forming screw (5/16 x 3/4 inch) and the shoulder bolt removed in [1 Preparing the Machine \(page 3\)](#).



**Figure 10**

- |   |                  |
|---|------------------|
| 1. Thread-forming screw (5/16 x 3/4 inch) | 3. Shoulder bolt |
| 2. Right pod bracket                      |                  |

5. Install the seat belt buckle and tongue to the inside of the seat belt brackets with 2 carriage screws (7/16 x 1 inch) and 2 locknuts (7/16 inch) as shown in [Figure 11](#).



**Figure 11**

- |                                    |   |
|------------------------------------|---|
| 1. Carriage screws (7/16 x 1 inch) | 3. Seat belt tongue assembly (bracket bent toward the seat) |
| 2. Seat belt bracket               | 4. Locknut (7/16 x 1 inch)                                  |

# 4

## Installing the Pod Brackets and Seat Belt

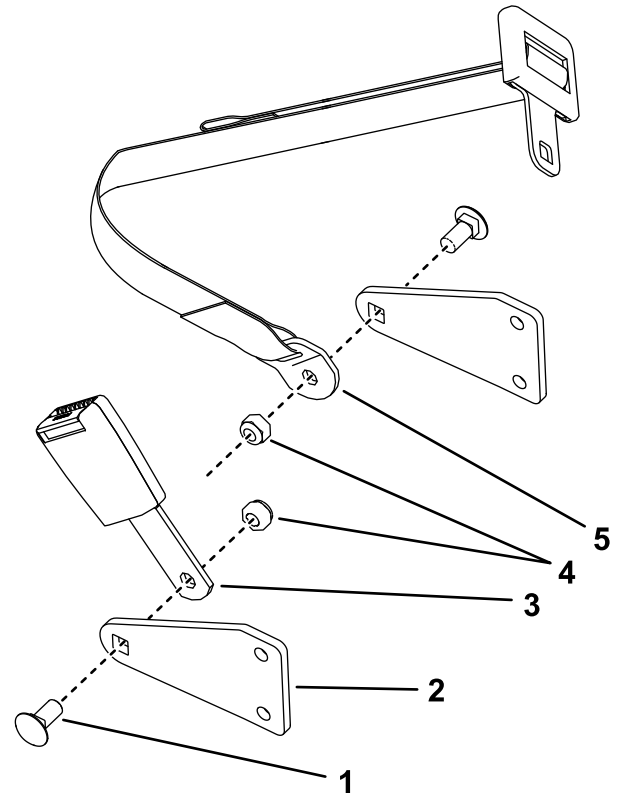
### Machines without MyRide Only

#### Parts needed for this procedure:

1	Seat belt tongue assembly
1	Seat belt buckle assembly
2	Carriage screw (7/16 x 1 inch)
2	Locknut (7/16 inch)
2	Seat belt bracket (machines without MyRide only)
4	Bolt (3/8 x 1 inch)
4	Locknut (3/8 inch)
1	Left pod bracket
1	Bumper
1	Right pod bracket (machines without MyRide only)
4	Thread-forming screw (5/16 x 3/4 inch)

## Procedure

1. Install the seat belt buckle and tongue to the inside of the seat belt brackets with 2 carriage screws (7/16 x 1 inch) and 2 locknuts (7/16 inch) as shown in [Figure 12](#).



**Figure 12**

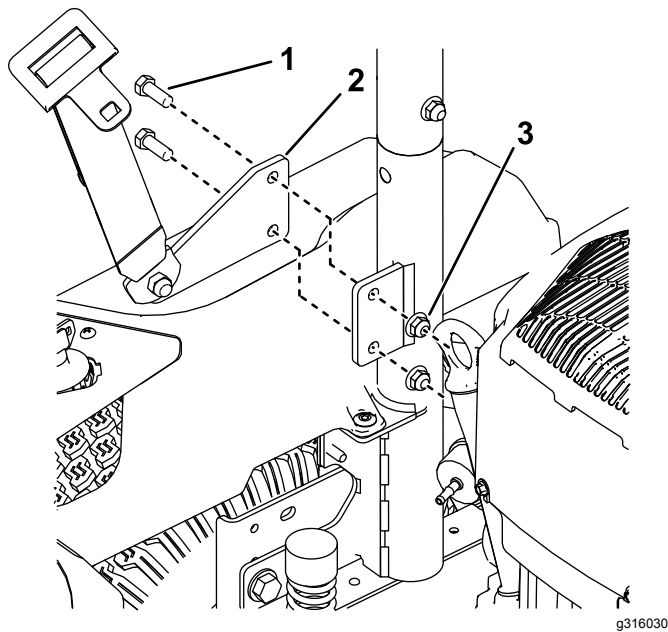
g316016

1. Carriage screw (7/16 x 1 inch)
2. Seat belt bracket
3. Buckle
4. Locknuts (7/16 inch)
5. Tongue assembly



2. Install the seat belt brackets to the outside of the ROPS mounts ([Figure 13](#)).

**Note:** Install the seat belt buckle assembly with the bent bracket toward the seat.

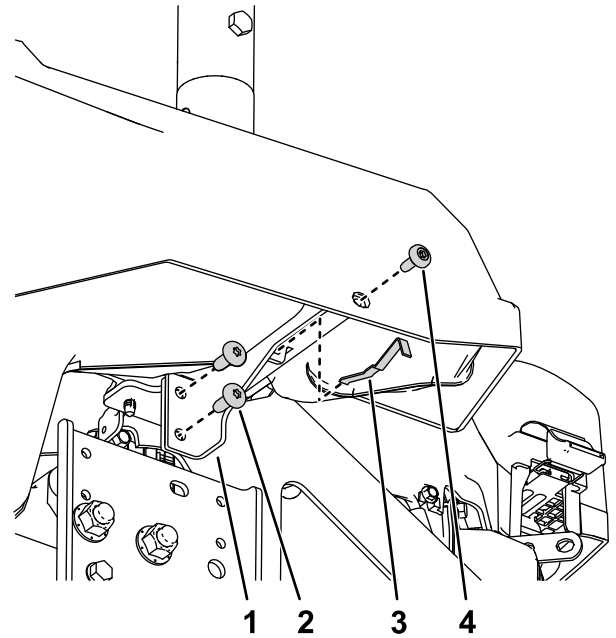


**Figure 13**

Right side shown

- |                        |                       |
|------------------------|-----------------------|
| 1. Bolt (3/8 x 1 inch) | 3. Locknut (3/8 inch) |
| 2. Seat belt bracket   |                       |

5. Install the left pod bracket to the machine frame using 2 thread-forming screws (5/16 x 3/4 inch) as shown in [Figure 13](#).



**Figure 14**

- |   |                     |
|---|---------------------|
| 1. Left pod bracket                       | 3. Fuel-tank spring |
| 2. Thread-forming screw (5/16 x 3/4 inch) | 4. Shoulder bolt    |

3. Install the right pod bracket to the machine frame using 2 thread-forming screws (5/16 x 3/4 inch) and the parts removed in [1 Preparing the Machine \(page 3\)](#) as shown in [Figure 3](#).
4. Install the bumper to the left pod bracket ([Figure 8](#)).

# 5

## Completing the Installation

### Parts needed for this procedure:

1	ROPS tube
2	Bolt (3/8 x 2-1/2 inches)
2	Locknut (3/8 inch)
4	Suitcase weight (For machines with a bagger installed only)
2	Bolt (3/8 x 3-3/4 inches)

### Procedure

1. Install the rear tires as shown in [Figure 2](#).
2. Lower the machine; refer to your machine *Operator's Manual*.
3. Lower the seat.
4. With the ROPS tube angle toward the rear of the machine, install the ROPS tube to the ROPS mounts with 2 bolts (3/8 x 2-1/2 inches) and 2 locknuts (3/8 inch) as shown in [Figure 15](#).
5. **For machines with a bagger installed only:** Install the included additional suitcase weights to the machine using 2 bolts (3/8 x 3-3/4 inches) as necessary according to the table below ([Figure 16](#)).

Type of Deck	Total Weights Required
42-inch stamped deck	11
42-inch fabricated deck	10
50-inch fabricated deck	8
54-inch fabricated deck	6
60-inch fabricated deck	6

**Note:** The weight brackets will hold up to 8 suitcase weights between the front edge of the bracket and the machine; any additional weights must be mounted to the front of the weight brackets.

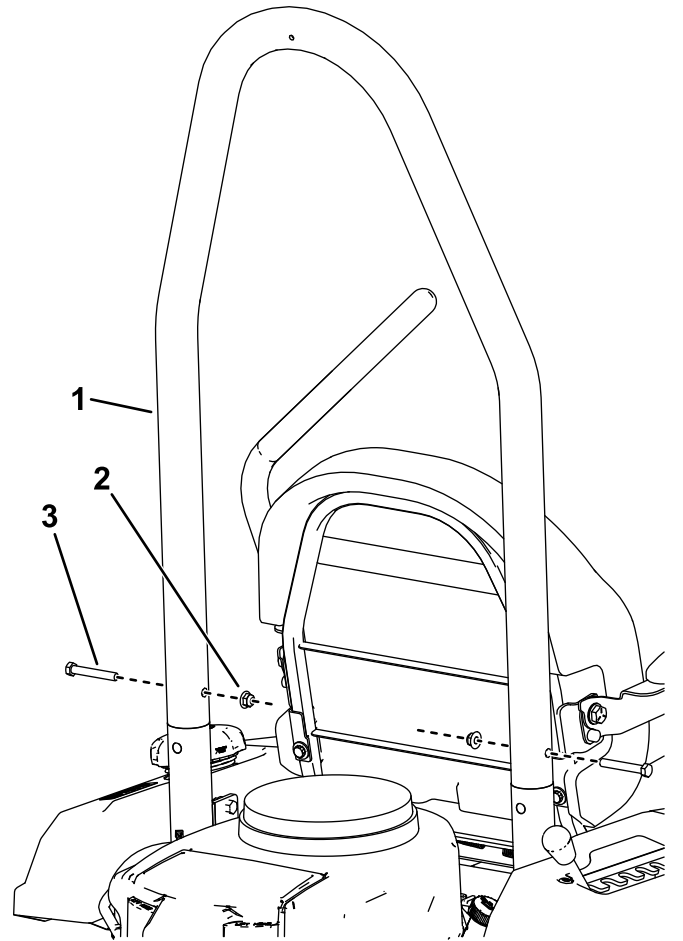


Figure 15

1. ROPS tube
2. Locknut (3/8 inch)
3. Bolt (3/8 x 2-1/2 inches)

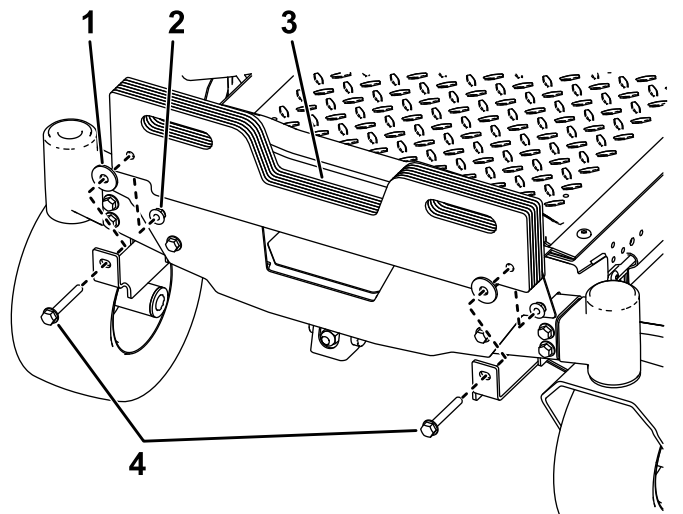


Figure 16

1. Washer
2. Locknut
3. Suitcase weight
4. Bolt (3/8 x 3-3/4 inches)

**Notes:**



**Count on it.**