



Count on it.

Parts Catalog

Autosteering Finish Kit

**Serial Number 316000001 and After Multi
Pro[®] 5800-D Turf Sprayer with GeoLink[®]**

Model No. 138-6246



Ordering Replacement Parts

To order replacement parts, please supply the part number, the quantity, and the description of each part desired.

Understanding Reference Numbers

Each identified part in an illustration has a reference number. The reference number for a part also appears in the parts list, along with other information about the part.

This catalog uses two special reference number formats, one to indicate parts in a service assembly and another to indicate the quantity of a given part in an illustration.

Service Assembly Reference Numbers

Parts in service assemblies have reference numbers in the form a:b. The a represents the reference number of the entire service assembly and the b represents a sequential number unique to each part within the service assembly.

For example, a wheel assembly might be identified by reference number 6, the tire by 6:1, the valve by 6:2, and the wheel by 6:3. When you order the assembly identified by reference number 6, you receive all parts identified by reference numbers 6:1, 6:2, and 6:3. However, you may also order any part individually. Reference numbers of this type appear in illustration and in parts lists.

Reference Numbers Indicating Quantity

In an illustration, if a reference number indicates more than one part, the reference number has the form nX y. The n represents the quantity of the part, the X is the multiplication symbol, and the y represents the reference number.

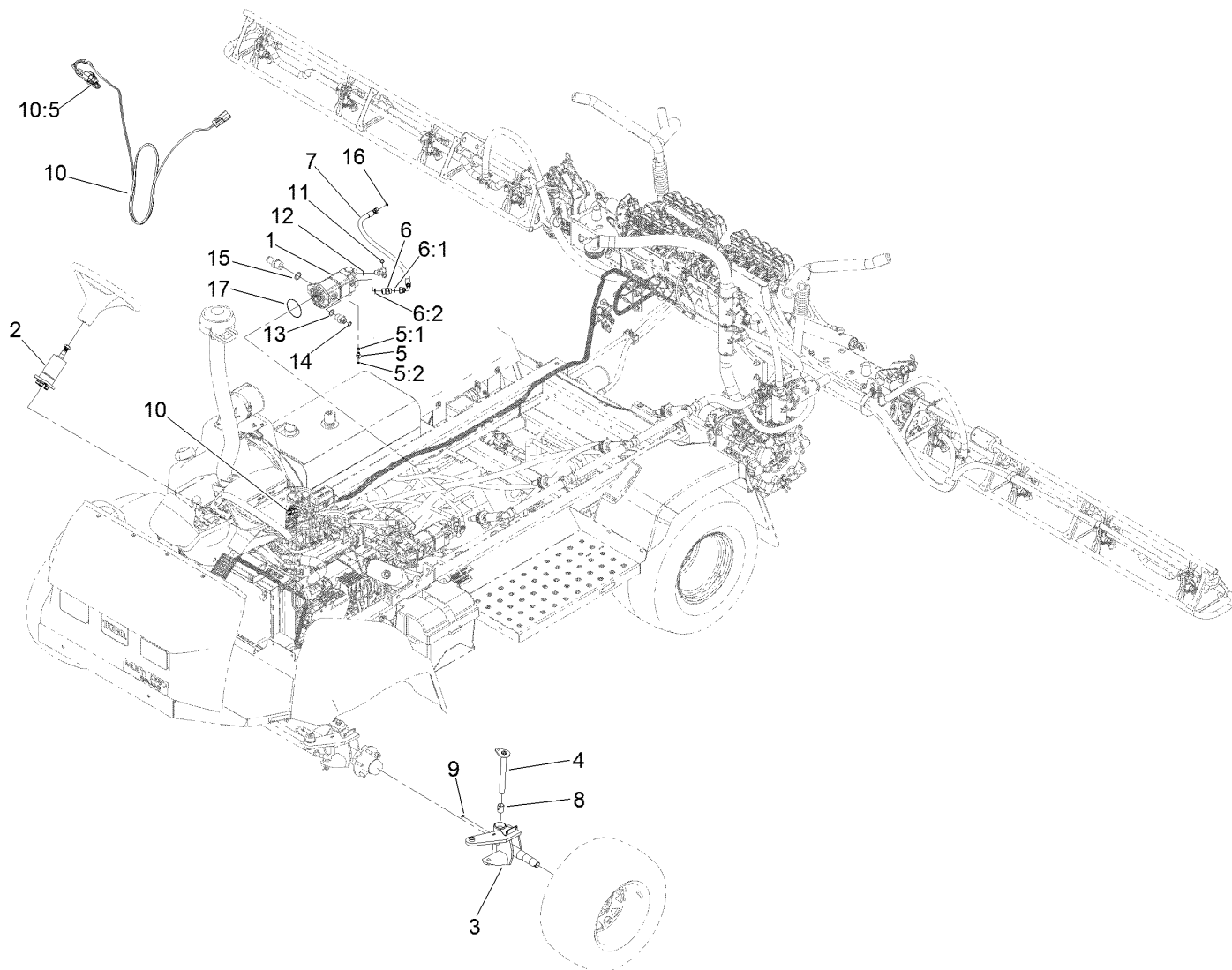
For example, in an illustration, the reference number 2X 37 means that two of the parts identified by reference number 37 are indicated.

Contents

Autosteering Finish Kit Assembly No. 138-6246 4

Tandem Pump Assembly No. 138-6193 5

Steering Valve Assembly No. 137-7509 6

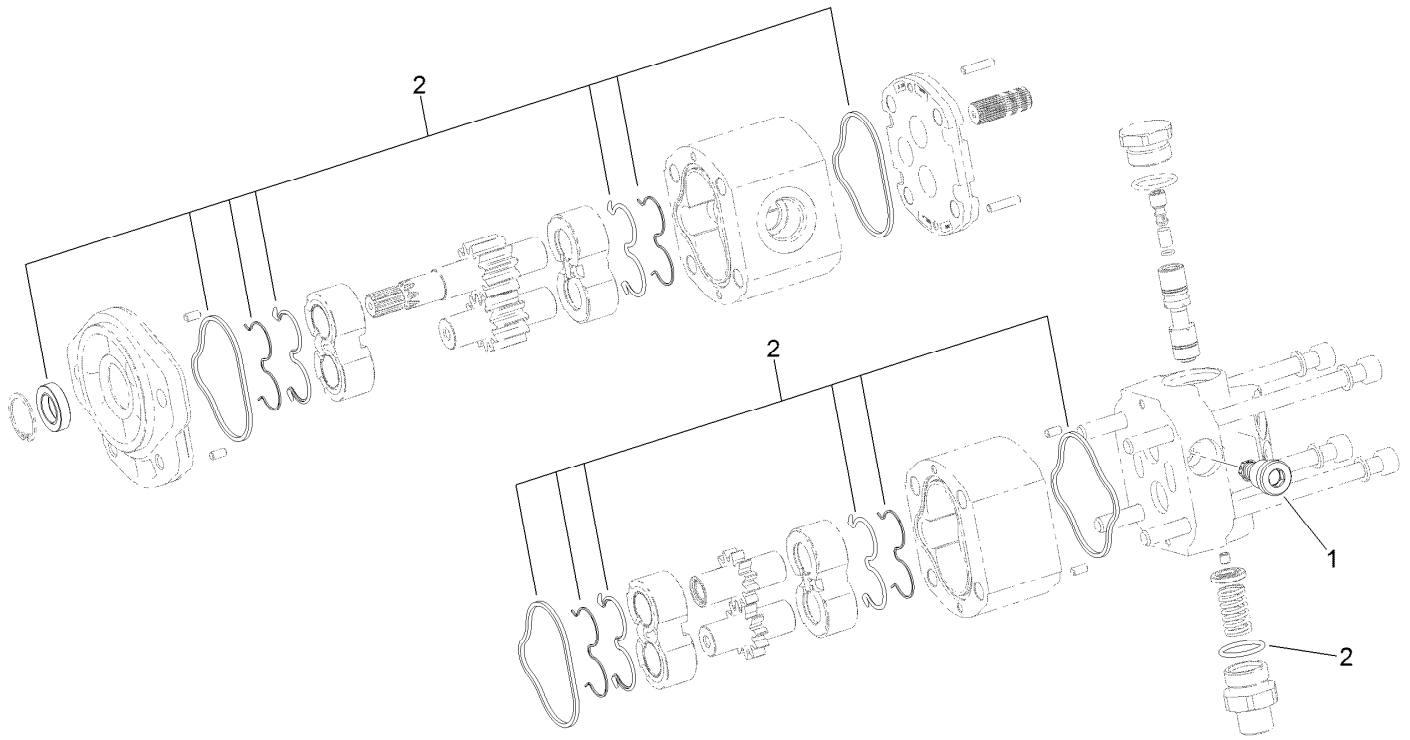


Autosteering Finish Kit Assembly No. 138-6246

Ref.	Part Number	Qty.	Description
1	138-6193	1	Pump-Tandem
2	137-7509	1	Valve-Steering
3	138-6244-03	1	Spindle-LH
4	138-6177	1	Pin-King
5	340-92	1	Fitting-Straight
5:1	237-78	1	O-Ring
5:2	237-21	1	O-Ring
6	340-6	1	Fitting-Straight
6:1	237-30	1	O-Ring
6:2	237-80	1	O-Ring
7	138-6196	1	Hose ASM
8	93-6586	2	Bushing

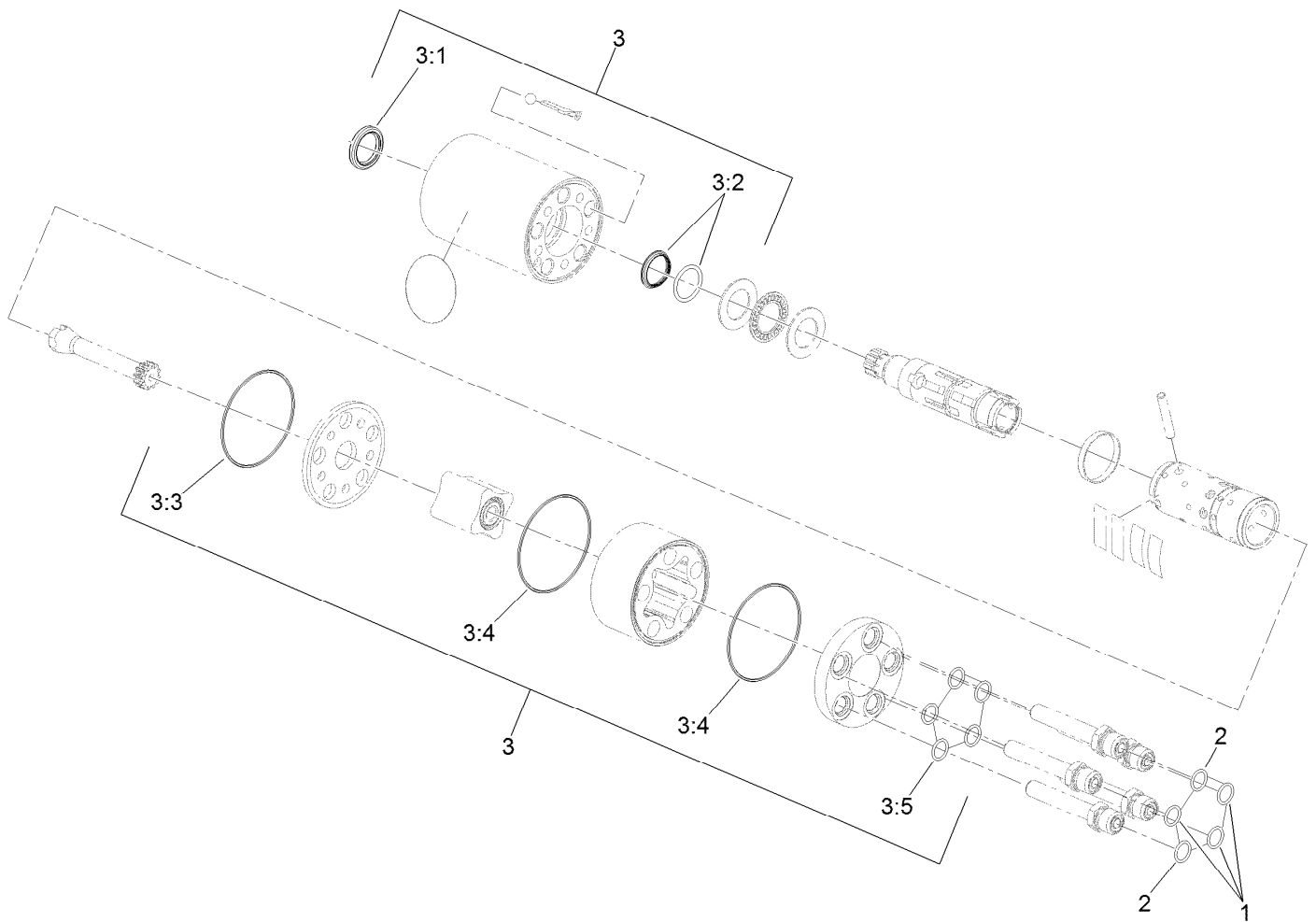
Ref.	Part Number	Qty.	Description
9	302-5	1	Fitting-Grease
10	122-1650	1	Harness-Wire, Adptr
10:5	32180-089	1	Cap-Plug, 3 Way
11	237-30	1	O-Ring
12	237-79	1	O-Ring
13	237-81	1	O-Ring
14	237-65	1	O-Ring
15	237-146	1	O-Ring
16	237-22	1	O-Ring
17	60-3520	1	O-Ring
99	122-1649	1	Harness-Wire, Adapter ●
99	140-7309	1	Plug-Hose ●

● Not illustrated



Tandem Pump Assembly No. 138-6193

<i>Ref.</i>	<i>Part Number</i>	<i>Qty.</i>	<i>Description</i>
1	138-6257	1	Valve-Relief
2	138-6258	1	Seal Kit



Steering Valve Assembly No. 137-7509

Ref.	Part Number	Qty.	Description
1	237-21	3	O-Ring
2	237-22	2	O-Ring
3	106-6716	1	Seal Kit
3:1		1	Ring-Seal, Dust ●
3:2		1	Seal-Shaft ●
3:3		1	O-Ring ●
3:4		2	O-Ring ●
3:5		5	O-Ring ●

● Not serviced separately

Notes:



Count on it.