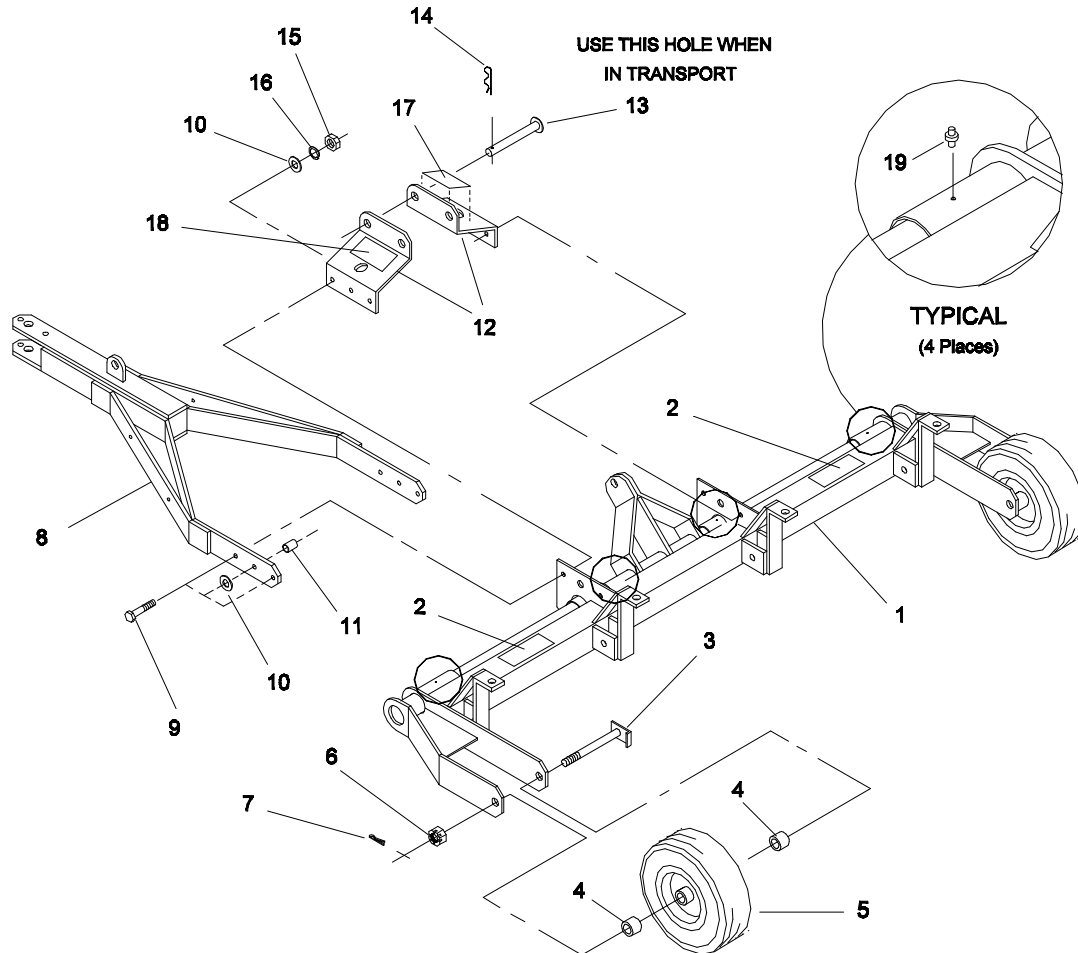




MODEL NO. 44850 - 50001 & UP
 MODEL NO. 44860 - 20101 & UP

PARTS CATALOG

AERATOR 686/AERATOR 687

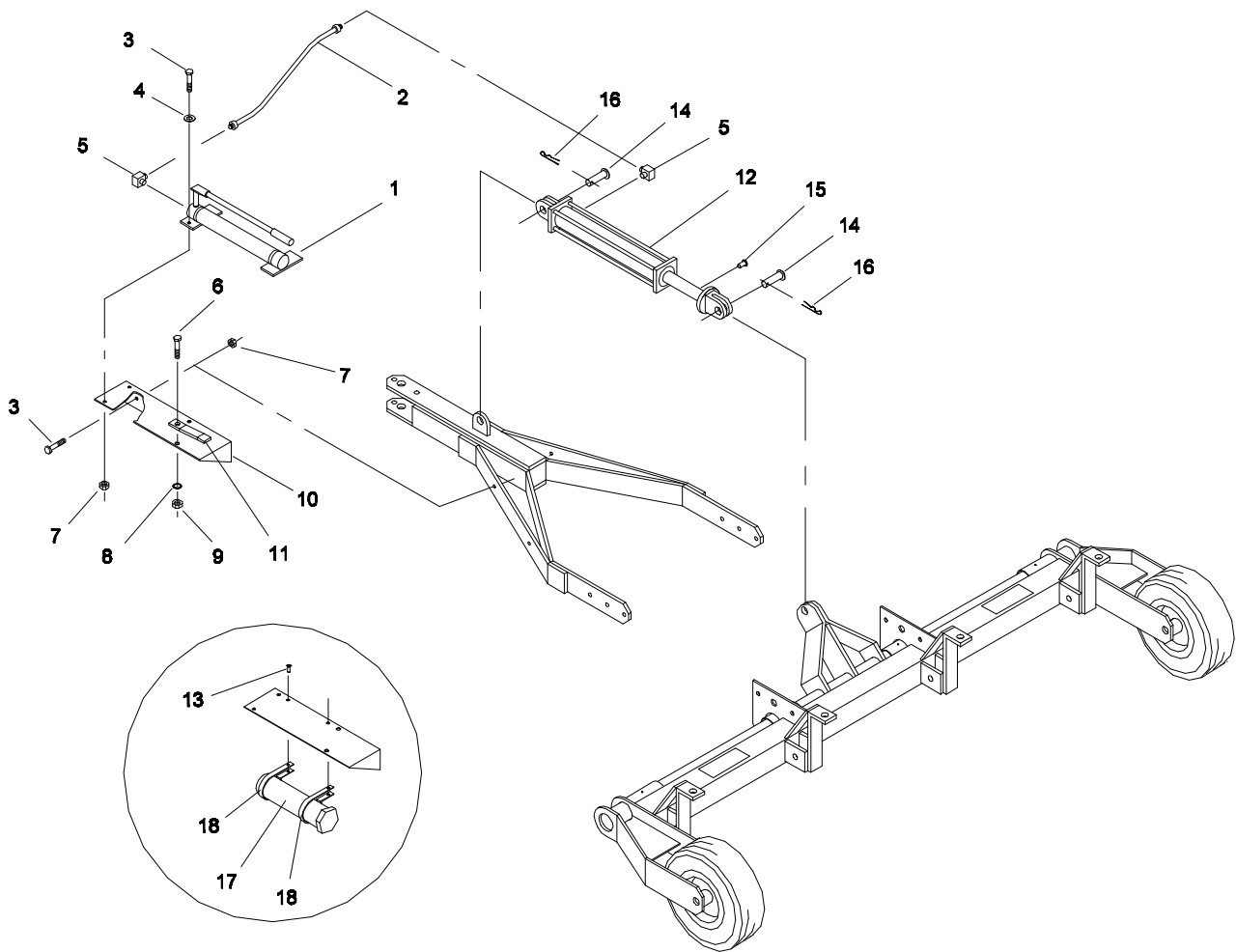


**AERATOR 686 - MODEL NO. 44850
 FRAME & TONGUE ASSEMBLY**

686-001

Ref. No.	Part No.	Description	No. Used
1	68-605-3053	Main Frame	1
2	01-506-0680	Decal - Aerator 686	2
3	68-605-3701	Axle	2
4	68-604-3321	Wheel Spacer	4
5	01-269-0230	Tire & Wheel	2
6	01-190-1614	Castle Nut	2
7	3272-23	Cotter Pin	2
8	68-605-3102	Tongue Assembly	1
9	325-10	Capscrew - Hex Hd.	6
10	3256-6	Flat Washer	8

Ref. No.	Part No.	Description	No. Used
11	68-604-3501	Hitch Spacer	2
12	68-604-3532	Transport Lock Plate	2
13	01-252-0060	Hitch Pin	1
14	01-159-0060	Presto Pin	1
15	3217-9	Hex Nut	6
16	3253-7	Lock Washer	6
17	67-1300	Decal - Toro	1
18	01-506-0340	Decal - Danger	1
19	01-215-0050	Grease Fitting	4

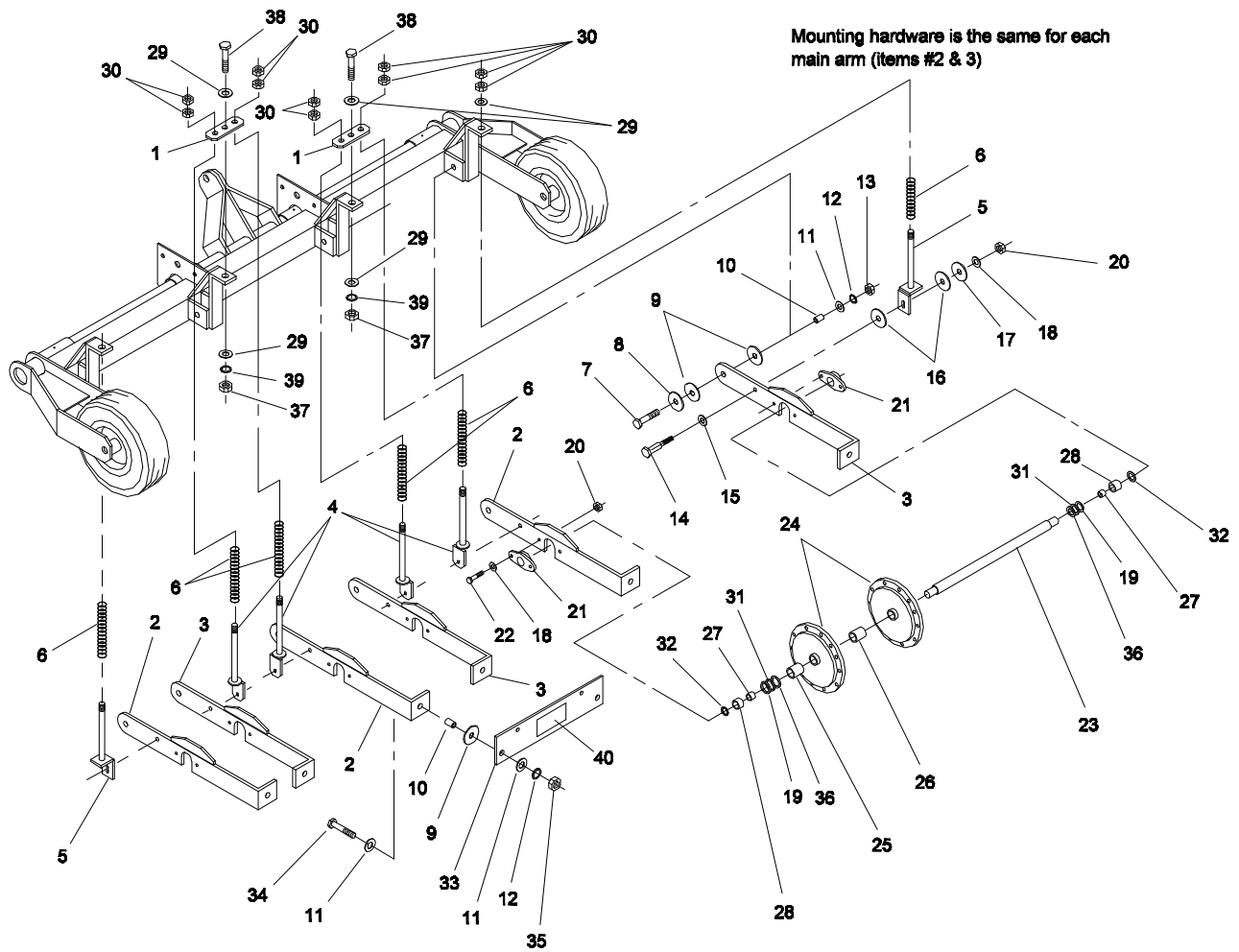


AERATOR 686 - MODEL NO. 44850 HAND PUMP & CYLINDER MOUNTING

686-005

Ref. No.	Part No.	Description	No. Used	Ref. No.	Part No.	Description	No. Used
1	01-305-0040	Hand Pump	1	11	68-604-3511	Vibration Strap	1
*	01-305-0420	Seal Kit	1	12	01-301-0540	Cylinder	1
2	01-312-0500	Hose Assembly	1	*	01-301-0570	Seal Kit	1
3	323-7	Capscrew - Hex Hd.	4	13	01-161-0020	Pop Rivet	2
4	3256-4	Flat Washer	2	14	01-252-0150	Clevis Pin	2
5	01-201-0190	Hydraulic Fitting	2	15	01-201-0330	Hydraulic Fitting	1
6	325-5	Capscrew - Hex Hd.	1	16	01-159-0010	Presto Pin	2
7	3296-39	Lock Nut	4	17	74-0720	Manual Tube	1
8	3253-7	Lock Washer	1	18	2412-133	R-Clamp	2
9	3217-9	Hex Nut	1				
10	68-605-3081	Pump Mount	1				

* Not Illustrated



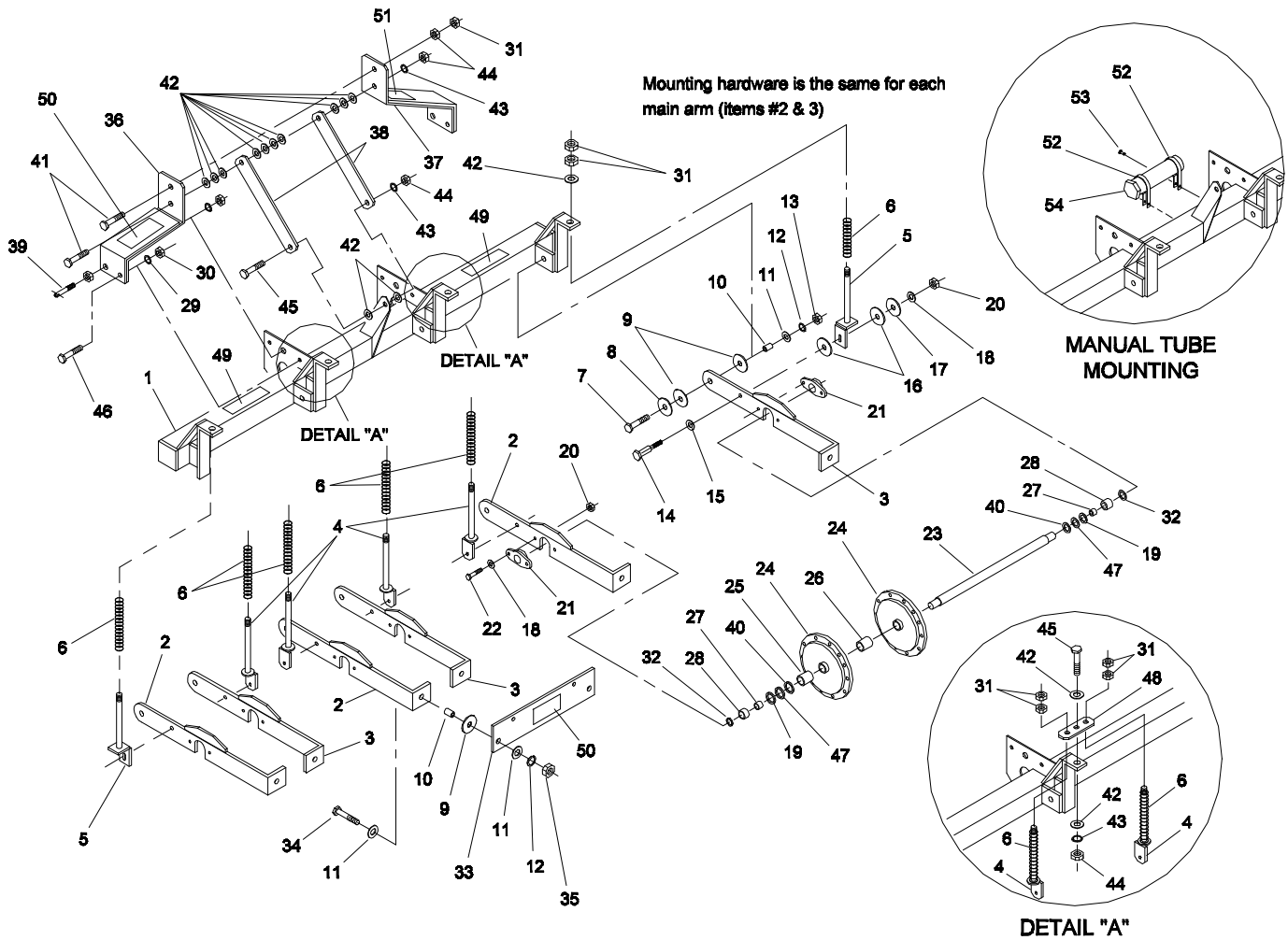
AERATOR 686 - MODEL NO. 44850 MAIN ARM ASSEMBLY

686-002

Ref. No.	Part No.	Description	No. Used
1	68-604-3571	Spring Mount	2
2	95-0082	Main Arm-L.H.	3
3	95-0081	Main Arm-R.H.	3
4	68-605-3141	Spring Bracket	4
5	68-605-3071	Spring Slide Bracket, outer	2
6	01-261-0190	Spring	6
7	327-6	Capscrew - Hex Hd.	6
8	68-604-3481	Large Washer	6
9	68-604-3151	Pivot Washer	18
10	01-125-0050	Bushing	12
11	3256-7	Flat Washer	18
12	3253-8	Lock Washer	12
13	3218-6	Jam Nut	6
14	01-158-0310	Shoulder Bolt	6
15	3256-6	Flat Washer	6
16	13-404-0221	Pivot Washer	12
17	68-604-3491	Small Washer	6
18	3256-4	Flat Washer	18
19	01-168-2018	Machinery Bushing	6(var)
20	3296-39	Lock Nut	18
21	01-100-0160	Bearing	6

Ref. No.	Part No.	Description	No. Used
22	323-8	Capscrew - Hex Hd.	12
23	68-604-3181	Aerator Shaft	3
24	44-004-0262	Casting	12
25	01-126-0030	Bushing	12
26	68-604-3421	Center Spacer	9
27	68-604-3451	Inside Spacer	6
28	68-604-3431	End Spacer	6
29	01-166-1200	Flat Washer	6
30	3218-7	Jam Nut	12
31	01-168-2014	Machinery Bushing	6(var)
32	01-168-1614	Machinery Bushing	6
33	68-604-3171	Main Arm End	3
34	327-7	Capscrew - Hex Hd.	6
35	3217-11	Hex Nut	6
36	01-168-2010	Machinery Bushing	6
37	3217-12	Hex Nut	2
38	328-2	Capscrew - Hex Hd.	2
39	3253-9	Lock Washer	2
40	67-1300	Decal - Toro	1
*	58-6520	Decal - Grease	12

* Not Illustrated

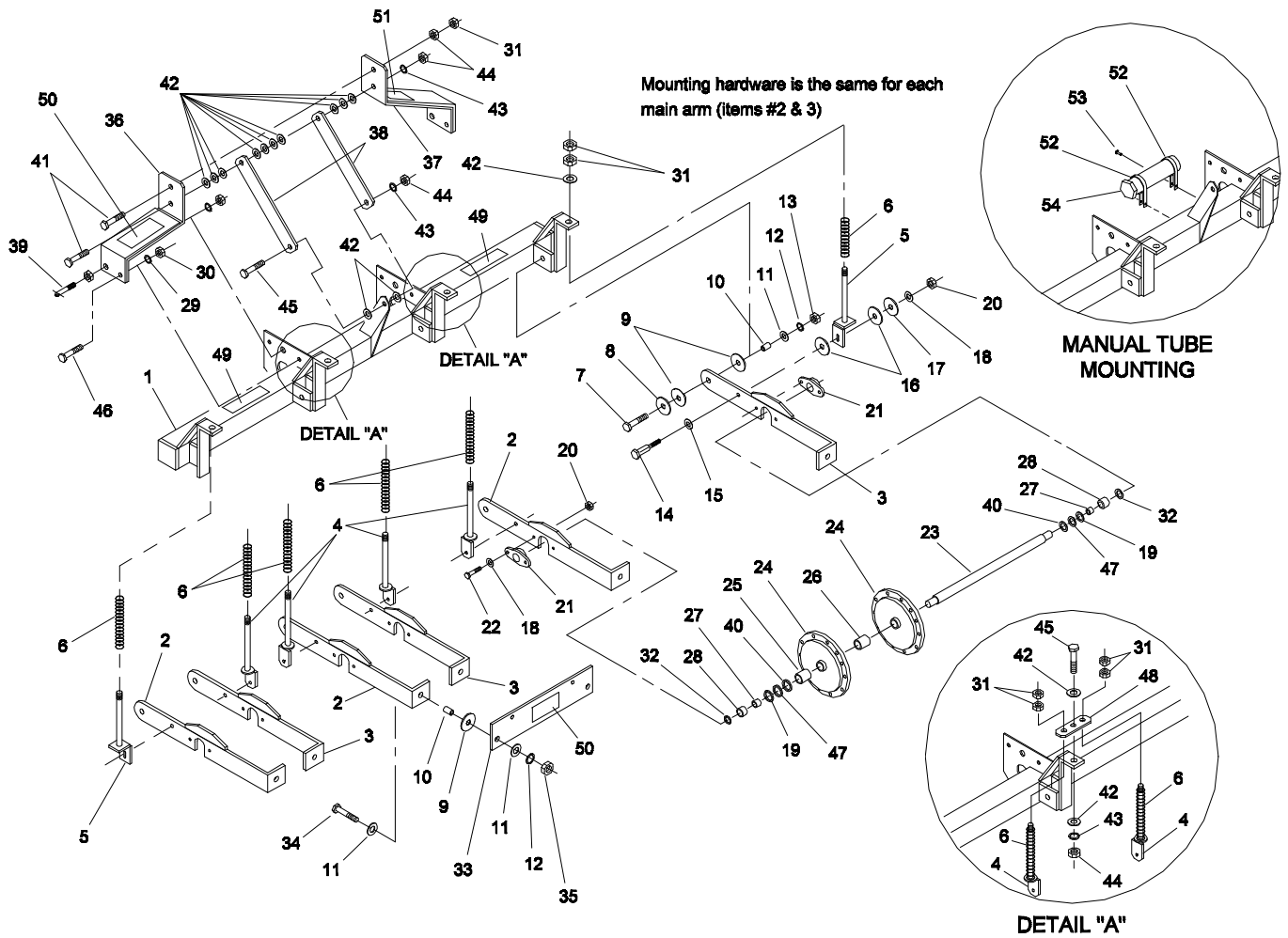


AERATOR 687 - MODEL NO. 44860

687-001

Ref. No.	Part No.	Description	No. Used
1	68-705-4053	Main Frame	1
2	95-0082	Main Arm-L.H.	3
3	95-0081	Main Arm-R.H.	3
4	68-605-3141	Spring Bracket	4
5	68-605-3071	Spring Slide Bracket, outer	2
6	01-261-0190	Spring	6
7	327-6	Capscrew - Hex Hd.	6
8	68-604-3481	Large Washer	6
9	68-604-3151	Pivot Washer	18
10	01-125-0050	Bushing	12
11	3256-7	Flat Washer	18
12	3253-8	Lock Washer	12
13	3218-6	Jam Nut	6
14	01-158-0310	Shoulder Bolt	6
15	3256-6	Flat Washer	6
16	13-404-0221	Pivot Washer	12
17	68-604-3491	Small Washer	6
18	3256-4	Flat Washer	18
19	01-168-2018	Machinery Bushing	6(var)
20	3296-39	Lock Nut	18
21	01-100-0160	Bearing	6
22	323-8	Capscrew - Hex Hd.	12
23	68-604-3181	Aerator Shaft	3
24	44-004-0262	Casting	12
25	01-126-0030	Bushing	12

Ref. No.	Part No.	Description	No. Used
26	68-604-3421	Center Spacer	9
27	68-604-3451	Inside Spacer	6
28	68-604-3431	End Spacer	6
29	3253-7	Lock Washer	2
30	3217-9	Hex Nut	2
31	3218-7	Jam Nut	13
32	01-168-1614	Machinery Bushing	6
33	68-604-3171	Main Arm End	3
34	327-7	Capscrew - Hex Hd.	6
35	3217-11	Hex Nut	6
36	68-705-4061	L.H. Lift Arm	1
37	68-705-4071	R.H. Lift Arm	1
38	68-704-4201	Hitch Stabilizer	2
39	01-252-0010	Hitch Pin w/nuts & lock washer	2
40	01-168-2010	Machinery Bushing	6
41	328-8	Capscrew - Hex Hd.	2
42	01-166-1200	Flat Washer	18
43	3253-9	Lock Washer	4
44	3217-12	Hex Nut	5
45	328-2	Capscrew - Hex Hd.	3
46	325-8	Capscrew - Hex Hd.	2
47	01-168-2014	Machinery Bushing	6(var)
48	68-604-3571	Spring Mount	2
49	01-506-0640	Decal - Aerator 687	2
50	67-1300	Decal - Toro	2



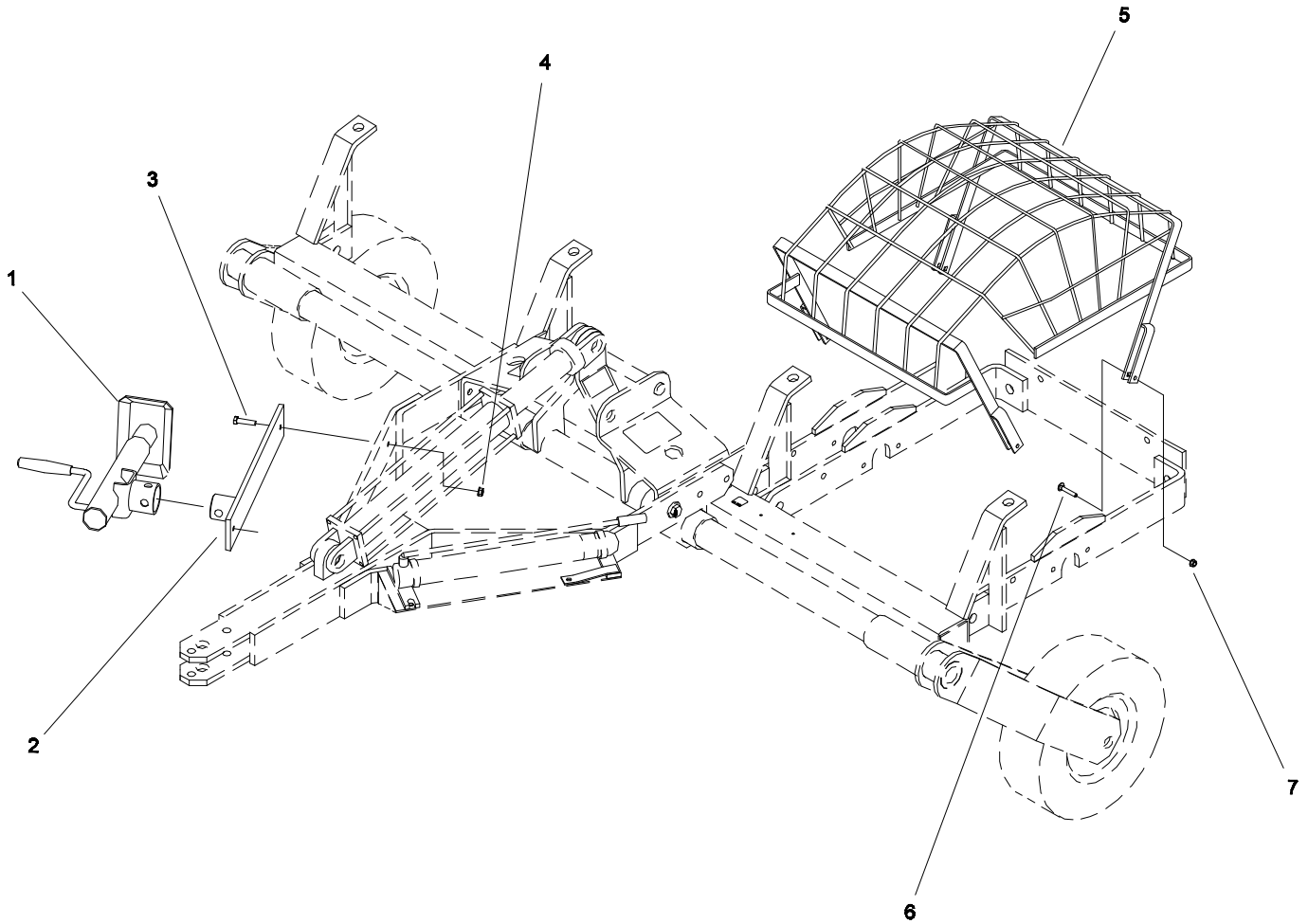
AERATOR 687 - MODEL NO. 44860 (Cont.)

687-001

Ref. No.	Part No.	Description	No. Used
51	01-506-0340	Decal - Danger	1
52	2412-133	R-Clamps	2
53	01-161-0020	Pop Rivet	2

Ref. No.	Part No.	Description	No. Used
54	74-0720	Manual Tube	1
*	58-6520	Decal - Grease	10

* Not Illustrated

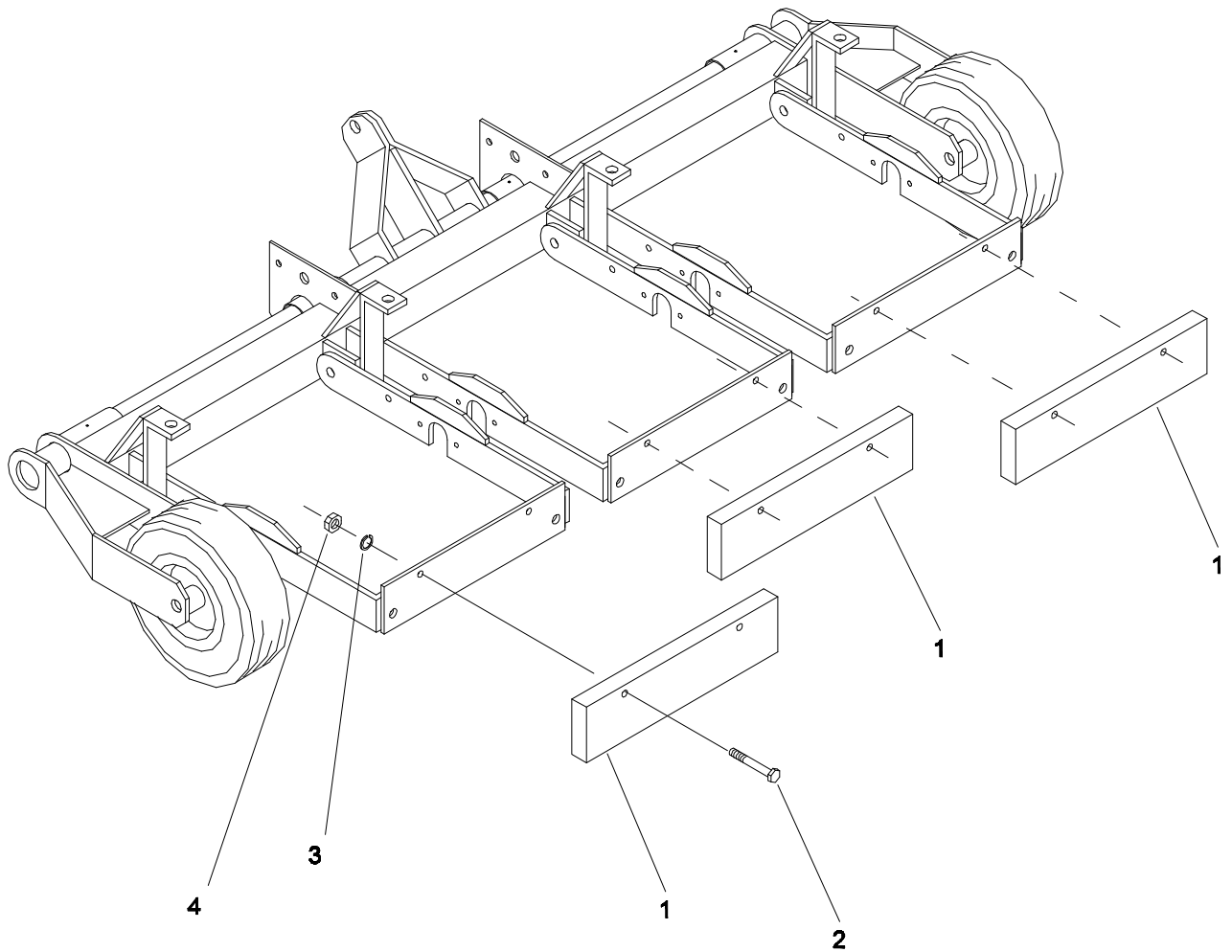


OPTIONS - JACK & GUARD ASSEMBLIES*

686-006

Ref. No.	Part No.	Description	No. Used
1	60-8900	Jack Assembly (686 Only)	1
2	99-0091	Jack Mount, WA (686 Only)	1
3	323-8	Capscrew - Hex Hd. (686 Only)	2
4	3296-39	Nut - Lock (686 Only)	2
5	95-3360	Guard Assembly	3

Ref. No.	Part No.	Description	No. Used
6	3230-3	Screw - Carriage	12
7	32128-20	Nut - Flange Lock	12
*	95-3350	CE Kit - Aerator 686 & 687 (Incl. #1 - 7)	1

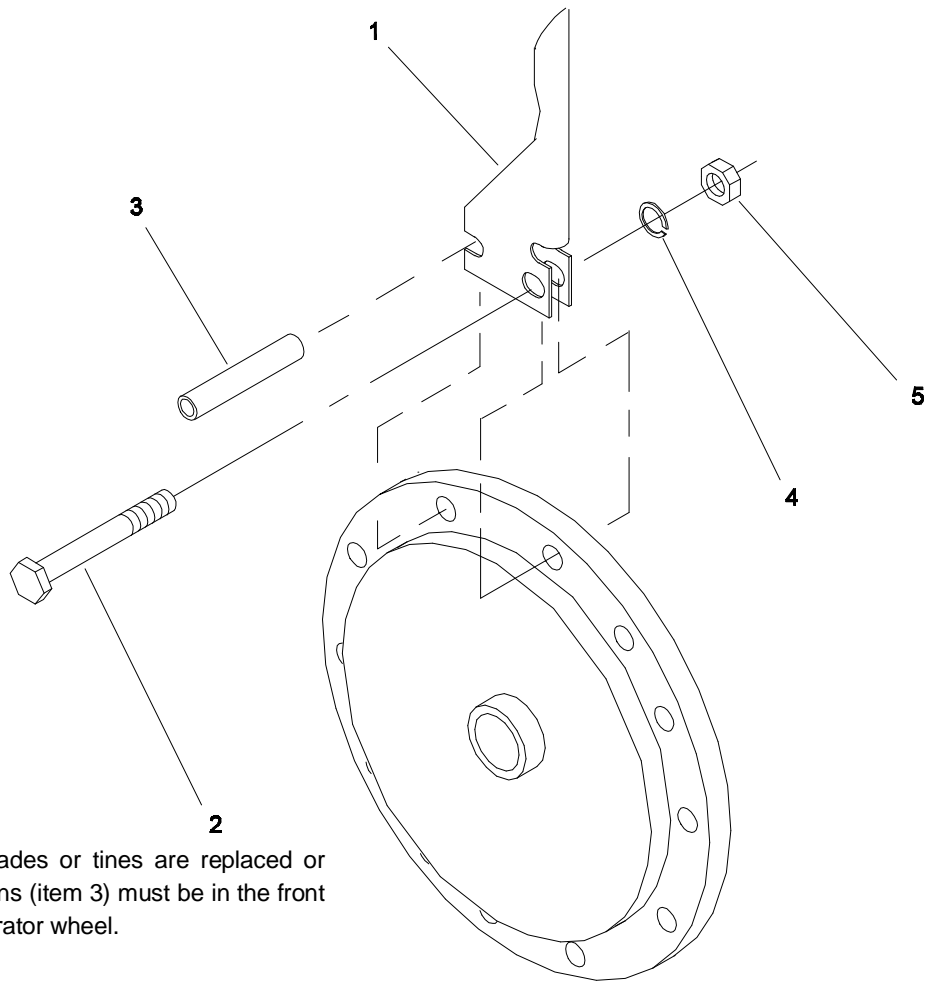


OPTIONS - WEIGHT KIT

686-004

Ref. No.	Part No.	Description	No. Used
1	68-604-3291	Weight Bar	3
2	01-178-0822	Capscrew - Hex Hd	6

Ref. No.	Part No.	Description	No. Used
3	01-166-0810	Lock Washer	6
4	3217-11	Hex Nut	6



NOTE: When blades or tines are replaced or re-installed, the pins (item 3) must be in the front position on the aerator wheel.

TINE & BLADE ASSEMBLY

686-003

Ref. No.	Part No.	Description	No. Used
1	01-283-0050	Coring Tine, 1/2" closed	96
*	01-283-0070	Coring Tine, 1/2" open	96
*	01-283-0060	Coring Tine, 3/4" closed	96
*	01-283-0080	Coring Tine, 3/4" open	96
*	01-283-0030	Slicing Blade, 4"	96

Ref. No.	Part No.	Description	No. Used
2	325-7	Capscrew - Hex Hd.	96
3	32121-122	Roll Pin	96
4	3253-7	Lock Washer	96
5	3217-9	Hex Nut	96

* Not Illustrated

PART NUMBER INDEX

Part No.	Description	Pg. No.	Ref. No.	Qty.	Part No.	Description	Pg. No.	Ref. No.	Qty.
01-100-0160	Bearing	4	21	6	3217-9	Hex Nut	8	5	96
01-100-0160	Bearing	3	21	6	3218-6	Jam Nut	3	13	6
01-125-0050	Bushing	3	10	12	3218-6	Jam Nut	4	13	6
01-125-0050	Bushing	4	10	12	3218-7	Jam Nut	3	30	12
01-126-0030	Bushing	3	25	12	3218-7	Jam Nut	4	31	13
01-126-0030	Bushing	4	25	12	323-7	Capscrew - Hex Hd.	2	3	4
01-158-0310	Shoulder Bolt	3	14	6	323-8	Capscrew - Hex Hd.	3	22	12
01-158-0310	Shoulder Bolt	4	14	6	323-8	Capscrew - Hex Hd.	4	22	12
01-159-0010	Presto Pin	2	16	2	325-10	Capscrew - Hex Hd.	1	9	6
01-159-0060	Presto Pin	1	14	1	325-5	Capscrew - Hex Hd.	2	6	1
01-161-0020	Pop Rivet	2	13	2	325-7	Capscrew - Hex Hd.	8	2	96
01-161-0020	Pop Rivet	5	53	2	325-8	Capscrew - Hex Hd.	4	46	2
01-166-0810	Lock Washer	7	3	6	3253-7	Lock Washer	1	16	6
01-166-1200	Flat Washer	3	29	6	3253-7	Lock Washer	2	8	1
01-166-1200	Flat Washer	4	42	18	3253-7	Lock Washer	4	29	2
01-168-1614	Machinery Bushing	3	32	6	3253-7	Lock Washer	8	4	96
01-168-1614	Machinery Bushing	4	32	6	3253-8	Lock Washer	3	12	12
01-168-2010	Machinery Bushing	3	36	6	3253-8	Lock Washer	4	12	12
01-168-2010	Machinery Bushing	4	40	6	3253-9	Lock Washer	3	39	2
01-168-2014	Machinery Bushing	3	31	6	3253-9	Lock Washer	4	43	4
01-168-2014	Machinery Bushing	4	47	6	3256-4	Flat Washer	2	2	2
01-168-2018	Machinery Bushing	3	42	6	3256-4	Flat Washer	3	18	18
01-168-2018	Machinery Bushing	5	56	6	3256-4	Flat Washer	4	18	18
01-178-0822	Capscrew - Hex Hd.	7	2	6	3256-6	Flat Washer	1	10	8
01-190-1614	Castle Nut	1	6	2	3256-6	Flat Washer	3	15	6
01-201-0190	Hydraulic Fitting	2	5	2	3256-6	Flat Washer	4	15	6
01-201-0330	Hydraulic Fitting	2	15	1	3256-7	Flat Washer	3	11	18
01-215-0050	Grease Fitting	1	19	4	3256-7	Flat Washer	4	11	18
01-252-0010	Hitch Pin	4	39	2	327-6	Capscrew - Hex Hd.	3	7	6
01-252-0060	Hitch Pin	1	13	1	327-6	Capscrew - Hex Hd.	4	7	6
01-252-0150	Clevis Pin	2	14	2	327-7	Capscrew - Hex Hd.	3	34	6
01-261-0190	Spring	3	6	6	327-7	Capscrew - Hex Hd.	4	34	6
01-261-0190	Spring	4	6	6	3272-23	Cotter Pin	1	7	2
01-269-0230	Tire & Wheel	1	5	2	328-2	Capscrew - Hex Hd.	3	38	2
01-283-0030	Slicing Blade	8	*	96	328-2	Capscrew - Hex Hd.	4	45	3
01-283-0050	Coring Tine	8	1	96	328-8	Capscrew - Hex Hd.	4	41	2
01-283-0060	Coring Tine	8	*	96	3296-39	Lock Nut	2	7	4
01-283-0070	Coring Tine	8	*	96	3296-39	Lock Nut	3	20	18
01-283-0080	Coring Tine	8	*	96	3296-39	Lock Nut	4	20	18
01-301-0540	Cylinder	2	12	1	44-004-0262	Casting	3	24	12
01-301-0570	Seal Kit	2	*	1	44-004-0262	Casting	4	24	12
01-305-0040	Hand Pump	2	1	1	58-6520	Decal - Grease	3	*	12
01-305-0420	Seal Kit	2	*	1	58-6520	Decal - Grease	5	*	10
01-312-0500	Hose Assembly	2	2	1	67-1300	Decal - Toro	1	17	1
01-506-0340	Decal - Danger	1	18	1	67-1300	Decal - Toro	3	40	1
01-506-0340	Decal - Danger	5	51	1	67-1300	Decal - Toro	4	50	2
01-506-0640	Decal - Aerator 687	4	49	2	68-604-3151	Pivot Washer	3	9	18
01-506-0680	Decal - Aerator 686	1	2	2	68-604-3151	Pivot Washer	4	9	18
13-404-0221	Pivot Washer	3	16	12	68-604-3171	Main Arm End	3	33	3
13-404-0221	Pivot Washer	4	16	12	68-604-3171	Main Arm End	4	33	3
2412-133	R-Clamp	2	18	2	68-604-3181	Aerator Shaft	3	23	3
2412-133	R-Clamps	5	52	2	68-604-3181	Aerator Shaft	4	23	3
32121-122	Roll Pin	8	3	96	68-604-3291	Weight	7	1	3
3217-11	Hex Nut	3	35	6	68-604-3321	Wheel Spacer	1	4	4
3217-11	Hex Nut	4	35	6	68-604-3421	Center Spacer	3	26	9
3217-11	Hex Nut	7	4	6	68-604-3421	Center Spacer	4	26	9
3217-12	Hex Nut	3	37	2	68-604-3431	End Spacer	3	28	6
3217-12	Hex Nut	4	44	5	68-604-3431	End Spacer	4	28	6
3217-9	Hex Nut	1	15	6	68-604-3451	Inside Spacer	3	27	6
3217-9	Hex Nut	2	9	1	68-604-3451	Inside Spacer	4	27	6
3217-9	Hex Nut	4	30	2	68-604-3481	Large Washer	3	8	6

* Not Illustrated

PART NUMBER INDEX (Continued)

Part No.	Description	Pg. No.	Ref. No.	Qty.	Part No.	Description	Pg. No.	Ref. No.	Qty.
68-604-3481	Large Washer	4	8	6	68-605-3141	Spring Bracket	4	4	4
68-604-3491	Small Washer	3	17	6	68-605-3701	Axle	1	3	2
68-604-3491	Small Washer	4	17	6	68-704-4201	Hitch Stabilizer	4	38	2
68-604-3501	Hitch Spacer	1	11	2	68-705-4053	Main Frame	4	1	1
68-604-3511	Vibration Strap	2	11	1	68-705-4061	L.H. Lift Arm	4	36	1
68-604-3532	Transport Lock Plate	1	12	2	68-705-4071	R.H. Lift Arm	4	37	1
68-604-3571	Spring Mount	3	1	2	74-0720	Manual Tube	2	17	1
68-604-3571	Spring Mount	4	48	2	74-0720	Manual Tube	5	54	1
68-605-3053	Main Frame	1	1	1	95-0081	Main Arm-R.H.	3	3	3
68-605-3071	Spring Slide Bracket	3	5	2	95-0081	Main Arm-R.H.	4	3	3
68-605-3071	Spring Slide Bracket	4	5	2	95-0082	Main Arm-L.H.	3	2	3
68-605-3081	Pump Mount	2	10	1	95-0082	Main Arm-L.H.	4	2	3
68-605-3102	Tongue Assembly	1	8	1	95-3350	CE Kit - Aerator 686 & 687	6	*	1
68-605-3141	Spring Bracket	3	4	4					

PRODUCT CHANGES

In an effort to make improvements available to TORO owners as quickly as possible minor changes are incorporated into Toro's products from time to time that do not become immediately shown in the Parts Catalog. If such a change has been made in your unit which is not reflected in your manual see your TORO Distributor or an Authorized Service Dealer for information and part numbers.

IDENTIFICATION & ORDERING

MODEL AND NUMBERS

The Aerators 686/687 have two identification numbers; a model number and a serial number. The two numbers are stamped on a plate which is located on the main frame. In any correspondence concerning the Aerators 686/687, supply model and serial numbers to assure that correct information and replacement parts are obtained.

To order replacement parts from your TORO Distributor or an Authorized Service Dealer, supply the following information:

1. Model and serial number of the unit.
2. Part number description and the quantity of part (s) desired.

NOTE: Do not order by reference number if a parts catalog is being used: use the PART NUMBER.

TABLE OF CONTENTS

Description	Page	Description	Page
Aerator 686 - Model No. 44850		Aerator 687 - Model No. 44860	4 - 5
Frame & Tongue Assembly	1	Options - Jack & Guard Assemblies	6
Aerator 686 - Model No. 44850		Options - Weight Kit	7
Hand Pump & Cylinder Mounting	2	Tine & Blade Assembly	8
Aerator 686 - Model No. 44850		Part Number Index	9 - 10
Main Arm Assembly	3		

