



## Seeder 93

Model No. 44835—200000001 and Up

### Parts Catalog

---

#### Ordering Replacement Parts

To order replacement parts, please supply: the part number, the quantity, and the description of each part desired.

#### Understanding Reference Numbers

Each identified part in an illustration has a reference number. The reference number for a part also appears in the parts list, along with other information about the part.

This catalog uses two special reference number formats, one to indicate parts in a service assembly and another to indicate the quantity of a given part in an illustration.

#### Service Assembly Reference Numbers

Parts in service assemblies have reference numbers in the form **a:b**. The **a** represents the reference number of the entire service assembly and the **b** represents a sequential number unique to each part within the service assembly.

For example, a wheel assembly might be identified by reference number **6**, the tire by **6:1**, the valve by **6:2**, and the wheel by **6:3**. When you order the assembly identified by reference number **6**, you receive all parts identified by reference numbers **6:1**, **6:2**, and **6:3**. However, you may also order any part individually.

Reference numbers of this type appear in illustrations and in part lists.

#### Reference Numbers Indicating Quantity

In an illustration, if a reference number indicates more than one part, the reference number has the form **nX y**. The **n** represents the quantity of the part, the **X** is the multiplication symbol, and the **y** represents the reference number.

For example, in an illustration, the reference number **2X 37** means that two of the parts identified by reference number **37** are indicated.

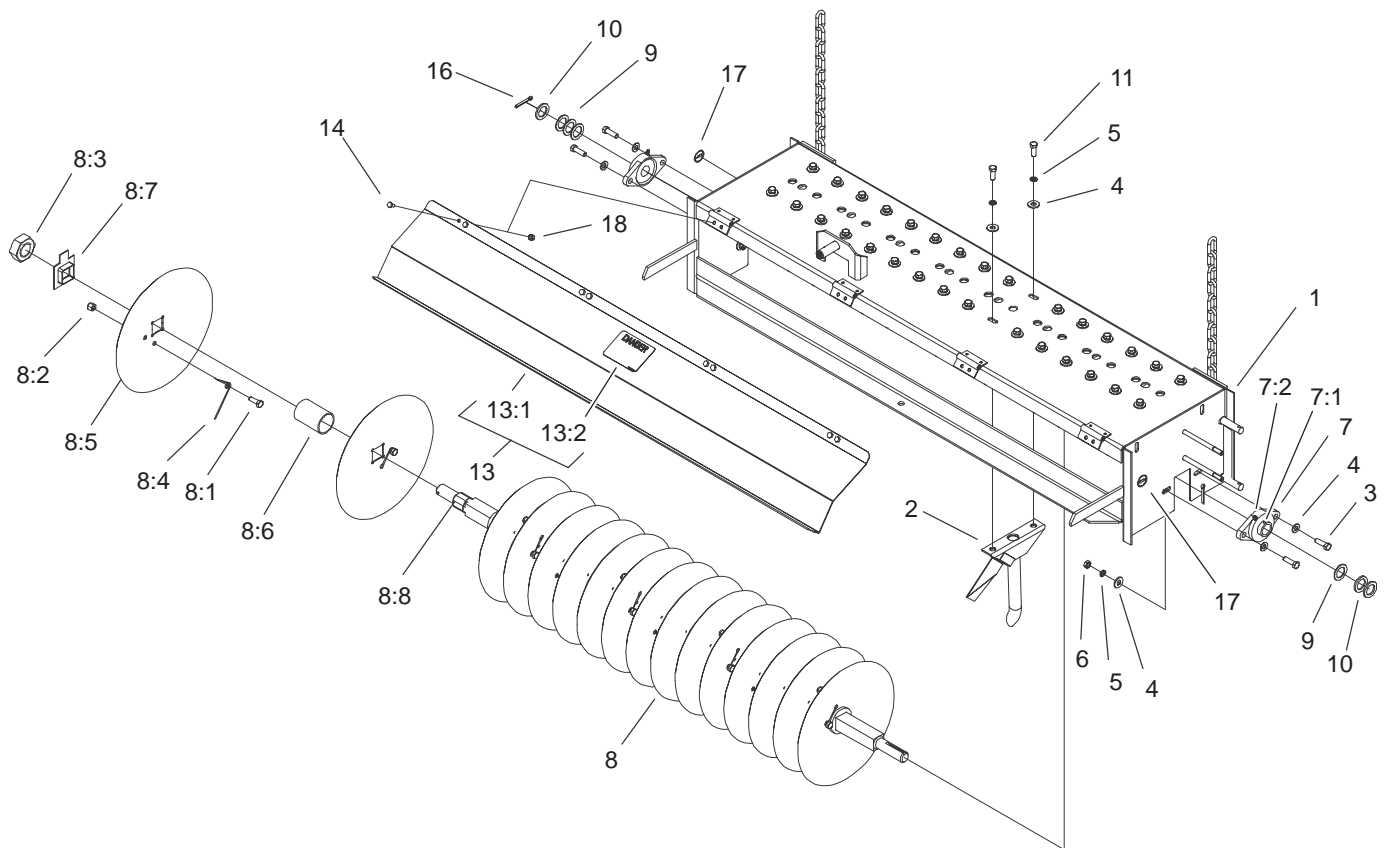
## Contents

<b>Description</b>	<b>Page</b>	<b>Description</b>	<b>Page</b>
Disc Shaft and Frame Assembly .....	3	Seeder Control Assembly .....	6
Seeder Box Assembly .....	4	Remote Handle Assembly .....	7
Chain and Guard Assembly .....	5		

## Part Description Abbreviations

Part descriptions in this catalog may include the following abbreviations.

<b>Abbreviation</b>	<b>Meaning</b>	<b>Abbreviation</b>	<b>Meaning</b>
AR .....	as required	INC .....	incorporated
ASM .....	assembly	LH .....	left hand
CARR .....	carriage	NI .....	nylon insert
DEG .....	degrees	PPH .....	Phillips pan head
FH .....	flat head	PTH .....	Phillips truss head
GA .....	gauge	PTO .....	power take off
HF .....	hex flange	RH .....	right hand
HH .....	hex head	SFH .....	slotted fillister head
HHF .....	hex head flange	SHH .....	slotted hex head
HLH .....	hex lag head	SQH .....	square head
HJ .....	hex jam	SHWH .....	slotted hex washer head
HOC .....	height-of-cut	SPH .....	slotted pan head
HS .....	hex socket	SRH .....	slotted round head
HSBH .....	hex socket button head	STD .....	standard
HSFH .....	hex socket flat head	TAP .....	self tapping
HSH .....	hex socket head	TTH .....	Torx truss head
HWH .....	hex washer head	WH .....	wing head
HWHTF .....	hex washer head thread forming		

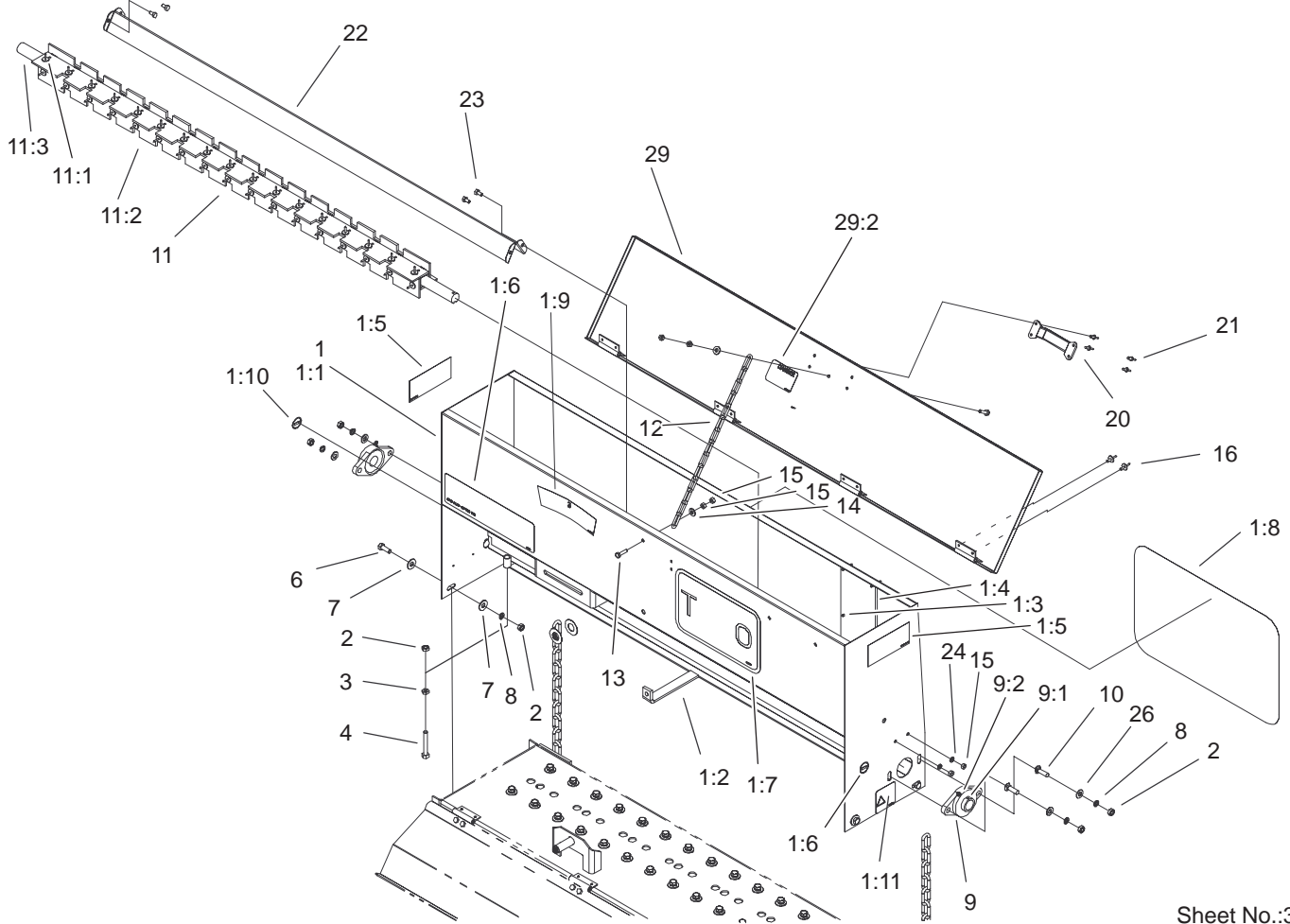


Sheet No.:2

## Disc Shaft and Frame Assembly

Ref. No.	Part No.	Qty.	Description	Ref. No.	Part No.	Qty.	Description
1	104-0584-01	1	Disc Frame ASM	14	321-3	8	Screw-HH
2	93-005-0073-01	16	Seeder Tube ASM	16	3272-23	1	Pin-Cotter
3	323-7	4	Screw-HH	17	58-6520	2	Decal-Grease
4	3256-4	40	Washer-Flat	18	3296-42	8	Nut-Lock NI
5	3253-21	36	Washer-Lock				
6	3217-7	4	Nut-Hex				
7	01-100-0160	2	Bearing-Flange, 2 Bolt				
7:1	302-11	1	Fitting-Lube, 45 DEG				
7:2	3245-35	1	Screw-HS				
8	93-002-0642	1	Disc Shaft ASM				
8:1	323-6	16	Screw-HH				
8:2	3296-39	16	Nut-Lock, NI				
8:3	01-191-2206	1	Nut-Jam				
8:4	01-261-0140	16	Spring-Wiper				
8:5	01-283-0020	16	Disc-12"				
8:6	93-004-0511	15	Spacer				
8:7	93-005-0351	1	Locking Spacer ASM				
8:8	93-005-0522-01	1	Disc Shaft ASM				
9	01-168-1614	4	Bushing				
10	01-168-1610	3	Bushing				
11	323-6	32	Screw-HH				
13	104-2518	1	Disc Shield ASM				
13:2	01-506-0340	1	Decal-Blades, Rotating				

3324-474

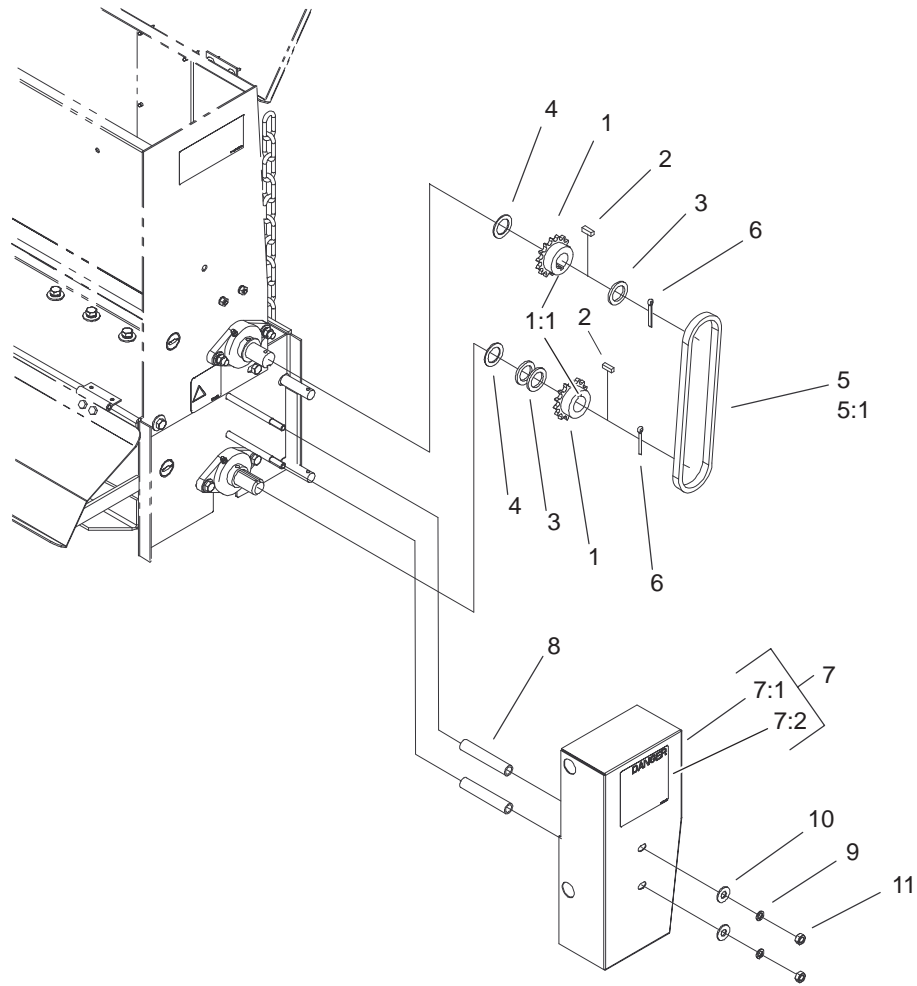


Sheet No.:3

## Seeder Box Assembly

Ref. No.	Part No.	Qty.	Description
1	104-2517	1	Seeder Box ASM
1:2	93-005-0062	1	Seed Slide ASM
1:3	01-161-0030	16	Rivet-Pop
1:4	93-004-0831	1	Cover-Hole, Peep
1:5	01-506-1030	2	Decal-Seeder 93
1:6	01-506-0610	1	Decal-Flow Chart, Seed
1:7	67-7920	1	Decal
1:8	66-1210	1	Decal
1:9	01-506-0140	1	Decal-Arc, Seed
1:10	58-6520	2	Decal-Grease
1:11	99-4486	1	Decal-Warning, Ce
2	3217-7	12	Nut-Hex
3	3218-3	4	Nut-Jam
4	01-182-0620	4	Screw-HH
6	323-6	4	Screw-HH
7	3256-4	8	Washer-Flat
8	3253-21	8	Washer-Lock
9	01-100-0160	2	Bearing-Flange, 2 Bolt
9:1	302-11	1	Fitting-Lube, 45 DEG
9:2	3245-35	1	Screw-HS
10	93-004-0941	4	Bolt-Bearing, Seeder
11	93-002-0042	1	Auger ASM

Ref. No.	Part No.	Qty.	Description
11:1	01-161-0030	68	Rivet-Pop
11:2	93-004-0322	4	Mixer Paddles
11:3	93-005-0362-01	1	Auger Shaft ASM
12	93-004-0441	1	Chain
13	321-6	2	Screw-HH
14	3256-2	2	Washer-Flat
15	3217-5	6	Nut-Hex
16	01-161-0030	8	Rivet-Pop
20	01-256-0140	1	Pull-Drawer/Door
21	01-161-0060	4	Rivet-Pop
22	93-004-0681	1	Baffle-Seeder
23	321-2	4	Screw-HH
24	3253-3	4	Washer-Lock
26	3256-24	4	Washer-Flat
29	104-2519	1	Seeder Box Lid ASM
29:2	01-506-0100	1	Decal-Auger, Rotating

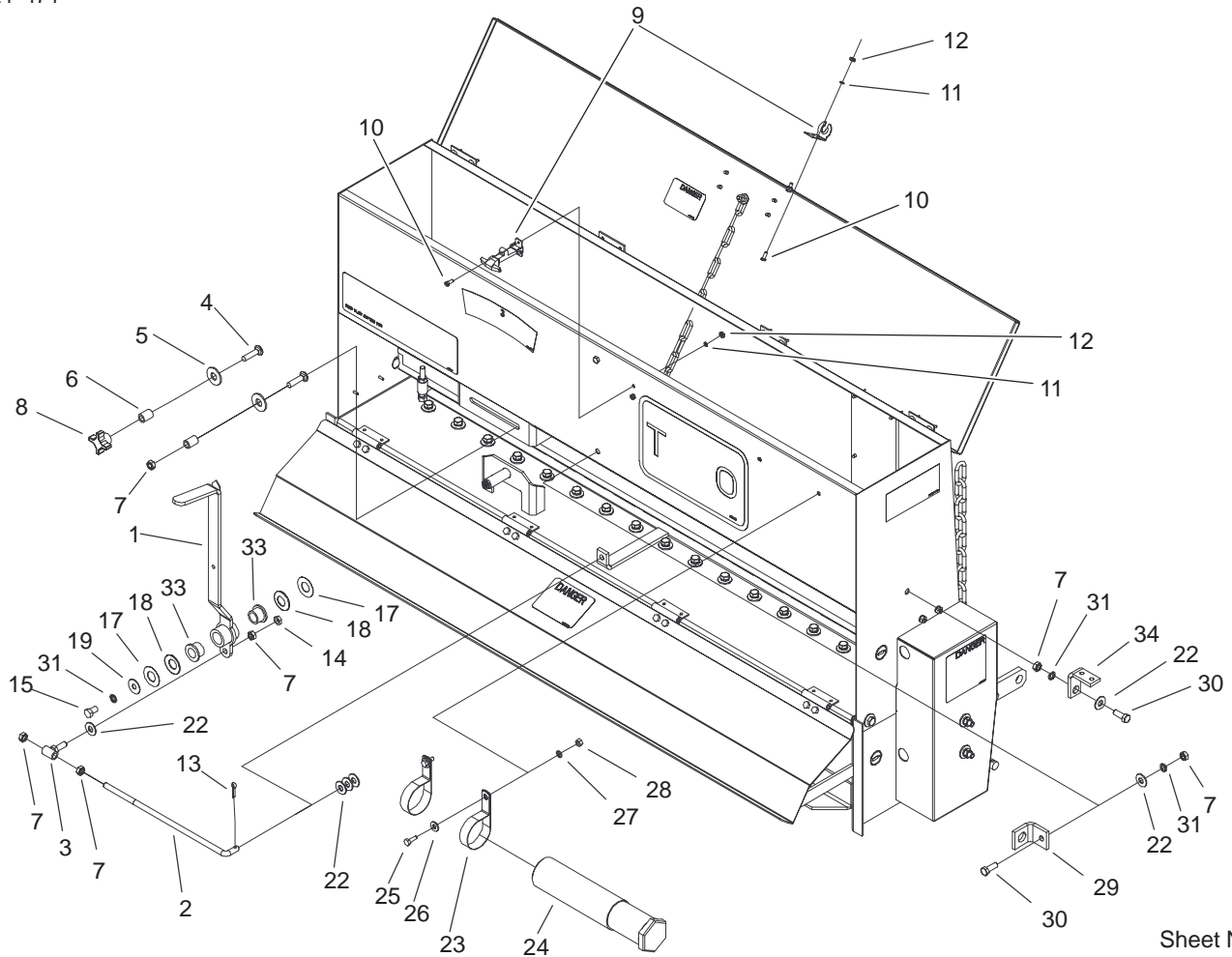


Sheet No.:4

## Chain and Guard Assembly

Ref. No.	Part No.	Qty.	Description
1	01-262-0450	2	Sprocket
1:1	3245-41	1	Screw-HSH
2	20-9540	2	Key
3	01-168-1610	3	Bushing
4	01-168-1614	2	Bushing
5	93-004-0651	1	Chain-Seeder
5:1	2710-6	1	Link-Connecting
6	3272-23	2	Pin-Cotter
7	104-2520	1	Chain Cover ASM
7:2	01-506-0050	1	Decal-Guard, Chain
8	93-004-0881	2	Spacer-Guard, Chain
9	3253-21	2	Washer-Lock
10	3256-4	2	Washer-Flat
11	3217-7	2	Nut-Hex

Ref. No.	Part No.	Qty.	Description

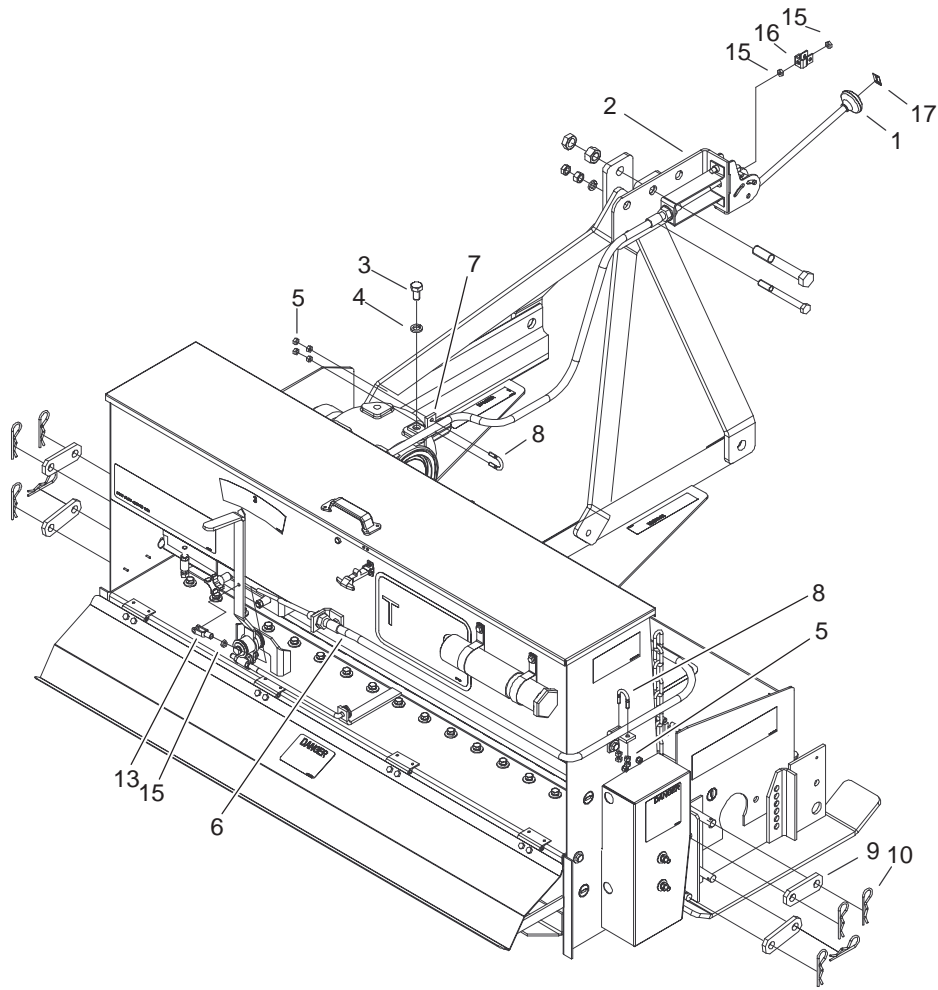


Sheet No.:5

## Seeder Control Assembly

Ref. No.	Part No.	Qty.	Description
1	100-7735-01	1	Handle-Seeder
2	93-004-0711	1	Rod-Adjustment, Seed
3	93-005-0751	1	Pivot Spacer ASM
4	3231-4	2	Screw-CARR
5	3256-26	2	Washer-Flat
6	93-004-0761	2	Spacer-Adjustment
7	3217-7	6	Nut-Hex
8	01-257-0010	1	Knob
9	01-270-1350	1	Latch-Draw, Flexible
10	01-158-1210	4	Screw-Shh
11	3253-17	4	Washer-Lock/Sp
12	3217-26	4	Nut-Hex
13	3272-48	1	Pin-Cotter
14	3218-3	1	Nut-Jam
15	323-34	1	Screw-HH
17	71-4540	3	Washer-Thrust
18	3290-440	2	Washer-Belleville
19	3256-35	1	Washer-Flat
22	3256-4	6	Washer-Flat
23	2412-133	2	R-Clamp
24	74-0720	1	Tube-Manual
25	321-4	2	Screw-HH
26	3256-2	2	Washer-Flat
27	3253-3	2	Washer-Lock

Ref. No.	Part No.	Qty.	Description
28	3217-5	2	Nut-Hex
29	93-004-0841-01	1	Bracket-Cable, Rear
30	323-6	2	Screw-HH
31	3253-21	3	Washer-Lock
33	256-244	2	Bushing
34	93-004-0851-01	1	Bracket-Cable



Sheet No.:6

T-3622

## Remote Handle Assembly

Ref. No.	Part No.	Qty.	Description
1	01-359-0250	1	Lever
3	93-5420	1	Screw-HH
4	104-0599	1	Washer-Lock, Split
5	3217-5	8	Nut-Hex
6	01-359-0230	1	Cable-Push/Pull
7	93-004-0851-01	1	Bracket-Cable
8	01-170-0040	2	U-Bolt
9	93-004-0121-01	4	Mount-Box, Seeder
10	01-159-0010	10	Pin-Presto
13	01-359-0240	1	Clevis
15	3220-2	3	Nut
16	01-359-0360	1	Adaptor-Clevis
17	100-7737	1	Decal-on/Off

Ref. No.	Part No.	Qty.	Description

