



Pull Link Kit for DPA Reel Mower Groomer

Greensmaster® 3250-D Series Traction Unit

Model No. 112-9248

Form No. 3416-524 Rev B

Installation Instructions

Determine the left and right sides of the machine from the normal operating position.

Installation

1

Preparing the Machine

No Parts Required

Procedure

1. Park the machine on a level surface.
2. Engage the parking brake.
3. Shut off the engine and remove the key.

2

Installing the Front Carrier Frames

Parts needed for this procedure:

2	Right link bracket
2	Left link bracket
4	Carriage bolt
4	Flat washer
4	Locknut
4	Bushing
4	Long pull-arm extension
4	Bolt—3/8 x 1-1/2 inches (2006 and earlier machines only)
4	Roller shaft (2007 and after machines only)
4	Bolt—3/8 x 2 inches (2007 and after machines only)
8	Bushing (2007 and after machines only)

2006 and Earlier Machines

1. Slide back the sleeve on the ball-joint receiver and remove the receiver from the ball stud ([Figure 1](#)).



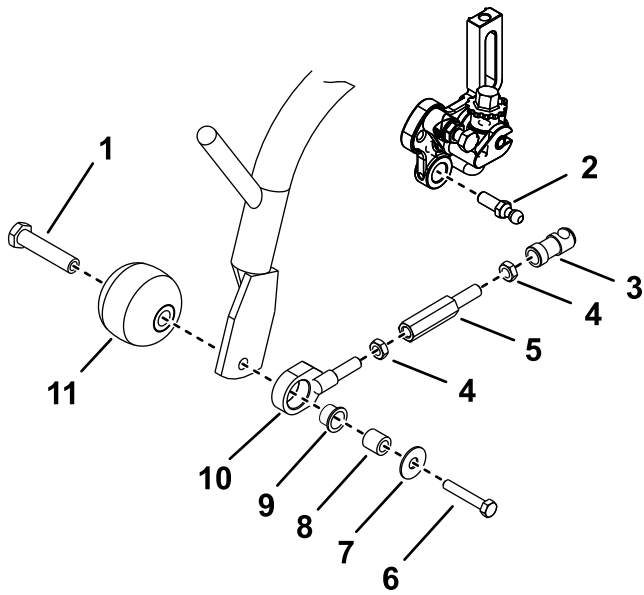


Figure 1

- | | |
|------------------------|------------------------|
| 1. Roller shaft | 7. Flat washer |
| 2. Ball stud | 8. Spacer |
| 3. Ball-joint receiver | 9. Bushing |
| 4. Jam nut | 10. Pull-link assembly |
| 5. Pull-link extension | 11. Anti-scalp roller |
| 6. Bolt | |

2. Remove the bolts and roller shafts securing the anti-scalp rollers and the pull-link assemblies to each carrier frame (Figure 1).
3. Disassemble the pull-link assemblies (Figure 1).
4. Thread the previously removed jam nut onto each of the new longer pull-arm extensions and onto the existing pull-link and bushing assemblies (Figure 2)

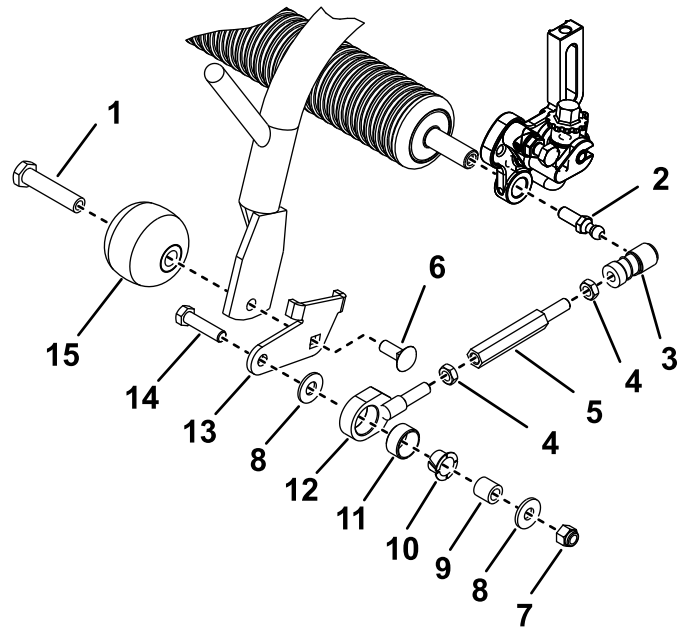


Figure 2

- | | |
|-----------------------------|-------------------------------|
| 1. Roller shaft | 9. Spacer |
| 2. Ball stud | 10. Bushing |
| 3. Ball-joint receiver | 11. Pull-link liner |
| 4. Jam nut | 12. Pull-link assembly |
| 5. Long pull-link extension | 13. Link bracket |
| 6. Carriage bolt | 14. Bolt (3/8 x 1-1/2 inches) |
| 7. Locknut | 15. Anti-scalp roller |
| 8. Flat washer | |

5. Assemble the new longer pull-arm extensions to the existing pull-link assemblies and ball-joint receiver assemblies (Figure 2). Do not tighten the jam nuts at this time.
6. Mount the appropriate link bracket (left or right) and a previously removed anti-scalp roller to the end of each front carrier frame with a new carriage bolt and the previously removed roller shaft. Position the brackets as shown in Figure 2.
7. Mount a pull-link assembly to the outside of each link bracket with a bolt (3/8 x 1-1/2 inches), flat washer, bushing, the previously removed spacer and flat washer, and a new locknut (Figure 2).

Note: Make sure that the bushing is inside the pull-link assembly.

8. Slide back the sleeve on the ball-joint receivers and install the receivers onto the ball studs (Figure 2).
9. Mount a basket onto the carrier frame.
10. Adjust the pull arms until there is a 6 to 10 mm (1/4 to 3/8 inch) clearance between the lip of the basket and the reel blades.

Note: Make sure the basket lips are parallel with the reel blades all the way across the reel blades.

11. Tighten the jam nuts.

2007 and Later Machines

1. Slide back the sleeve on the ball-joint receiver and remove the receiver from the ball stud (Figure 3)

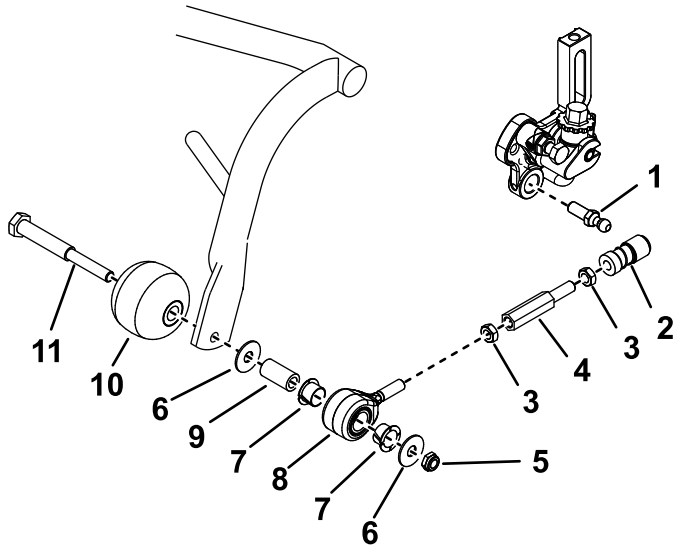


Figure 3

- | | |
|------------------------|-----------------------|
| 1. Ball stud | 7. Bushing |
| 2. Ball-joint receiver | 8. Pull-link assembly |
| 3. Jam nut | 9. Spacer |
| 4. Pull-link extension | 10. Anti-scalp roller |
| 5. Locknut | 11. Roller shaft |
| 6. Flat washer | |

2. Remove the locknuts and roller shafts securing the anti-scalp rollers and the pull-link assemblies to each carrier frame (Figure 3).
3. Disassemble the pull-link assemblies (Figure 3).
4. Thread a previously removed jam nut onto each of the new longer pull-arm extensions and onto the existing pull-link and bushing assemblies (Figure 4).

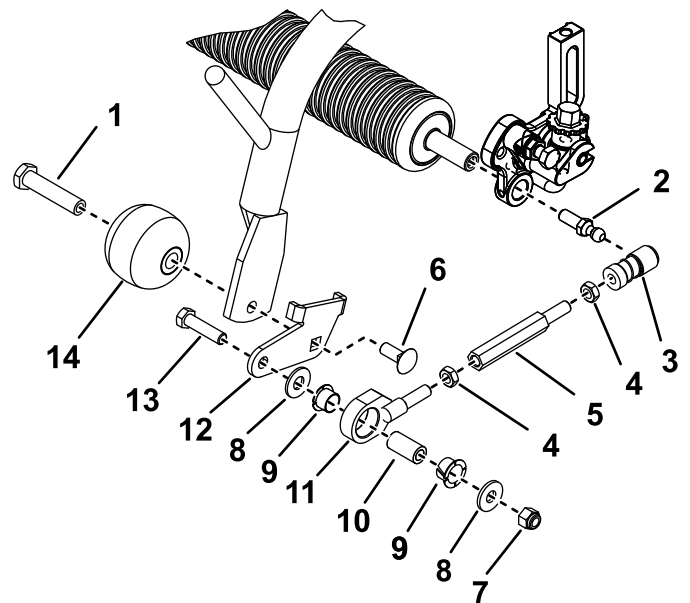


Figure 4

- | | |
|-----------------------------|---------------------------|
| 1. Roller shaft | 8. Flat washer |
| 2. Ball stud | 9. Bushing |
| 3. Ball-joint receiver | 10. Spacer |
| 4. Jam nut | 11. Pull-link assembly |
| 5. Long pull-link extension | 12. Link bracket |
| 6. Carriage bolt | 13. Bolt (3/8 x 2 inches) |
| 7. Locknut | 14. Anti-scalp roller |

5. Assemble the new longer pull-arm extensions to the existing pull-link assemblies and ball-joint receiver assemblies (Figure 4). Do not tighten the jam nuts at this time.
6. Mount the appropriate link bracket (left or right) and a previously removed anti-scalp roller to the end of each front carrier frame with a new carriage bolt and roller shaft. Position the brackets as shown in Figure 4.
7. Mount a pull-link assembly to the outside of each link bracket with a new bolt (3/8 x 2 inches), previously removed flat washer, 2 new bushings, a previously removed spacer, flat washer and locknut. Position the components as shown in Figure 4.

Note: Make sure that the bushings are inside the pull-link assembly.

8. Slide back the sleeve on the ball-joint receivers and install the receivers onto the ball studs (Figure 4).
9. Mount a basket onto the carrier frame.
10. Adjust the pull arms until there is a 2 to 3 mm (1/16 to 1/8 inch) clearance between the lip of the basket and the reel blades.

Note: Make sure that the basket lips are parallel with the reel blades all the way across the reel blades.

11. Tighten the jam nuts.

3

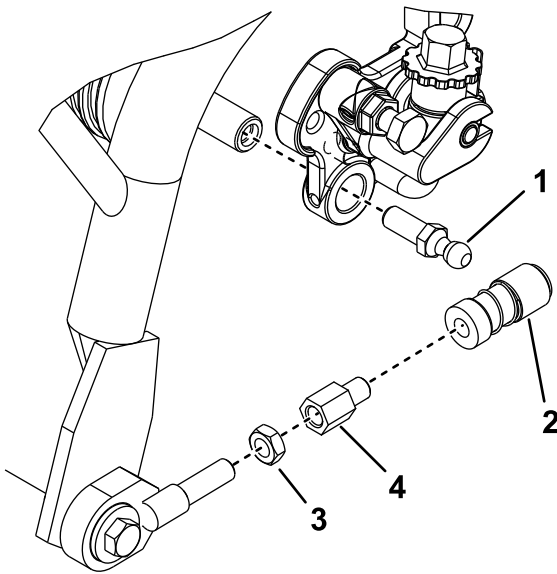
Installing the Rear Carrier Frame

Parts needed for this procedure:

2	Short pull-arm extension
---	--------------------------

Procedure

1. Slide back the sleeve on the ball-joint receiver and remove the receiver from the ball stud (Figure 5).



g317559

Figure 5

- | | |
|------------------------|------------------------------|
| 1. Ball stud | 3. Jam nut |
| 2. Ball-joint receiver | 4. Short pull-link extension |
-
2. Loosen the jam nuts and remove the pull-arm extension (Figure 5). Remove the jam nuts from the pull-arm extension.
 3. Install the new shorter pull-arm extension with the previously removed jam nut (Figure 5). Do not tighten the jam nuts.
 4. Adjust the pull arms until there is a 6 to 10 mm (1/4 to 3/8 inch) clearance for 2006 and earlier machines, or a 2 to 3 mm (1/16 to 1/8 inch)

clearance for 2007 and after machines, between the lip of the basket and the reel blades.

Note: Ensure that the basket lips are parallel with the reel blades all the way across the reel blades.

5. Tighten the jam nut.