



Form No. 3434-477 Rev B

**Count on it.**

# Parts Catalog

## AutoSteer Kit

### Multi Pro<sup>®</sup> 5800 Turf Sprayer with GeoLink<sup>®</sup>

Model No. 41636—Serial No. 400000000 and Up



# Ordering Replacement Parts

To order replacement parts, please supply the part number, the quantity, and the description of each part desired.

## Understanding Reference Numbers

Each identified part in an illustration has a reference number. The reference number for a part also appears in the parts list, along with other information about the part.

This catalog uses two special reference number formats, one to indicate parts in a service assembly and another to indicate the quantity of a given part in an illustration.

## Service Assembly Reference Numbers

Parts in service assemblies have reference numbers in the form a:b. The a represents the reference number of the entire service assembly and the b represents a sequential number unique to each part within the service assembly.

For example, a wheel assembly might be identified by reference number 6, the tire by 6:1, the valve by 6:2, and the wheel by 6:3. When you order the assembly identified by reference number 6, you receive all parts identified by reference numbers 6:1, 6:2, and 6:3. However, you may also order any part individually. Reference numbers of this type appear in illustration and in parts lists.

## Reference Numbers Indicating Quantity

In an illustration, if a reference number indicates more than one part, the reference number has the form nX y. The n represents the quantity of the part, the X is the multiplication symbol, and the y represents the reference number.

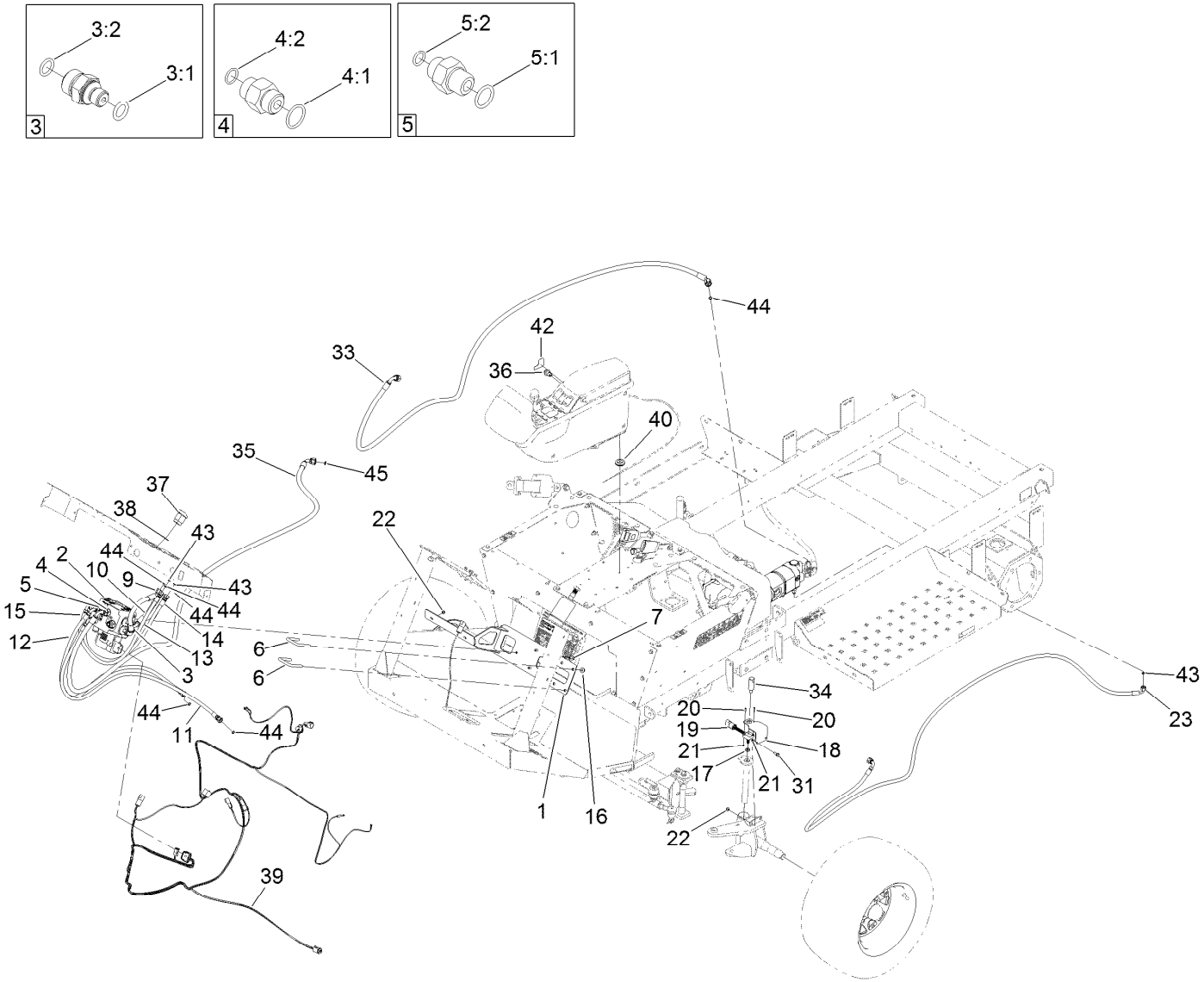
For example, in an illustration, the reference number 2X 37 means that two of the parts identified by reference number 37 are indicated.

# Contents

Autosteering Assembly ..... 4

Hydraulic Valve Assembly No. 137-4076 ..... 6

# Autosteering Assembly

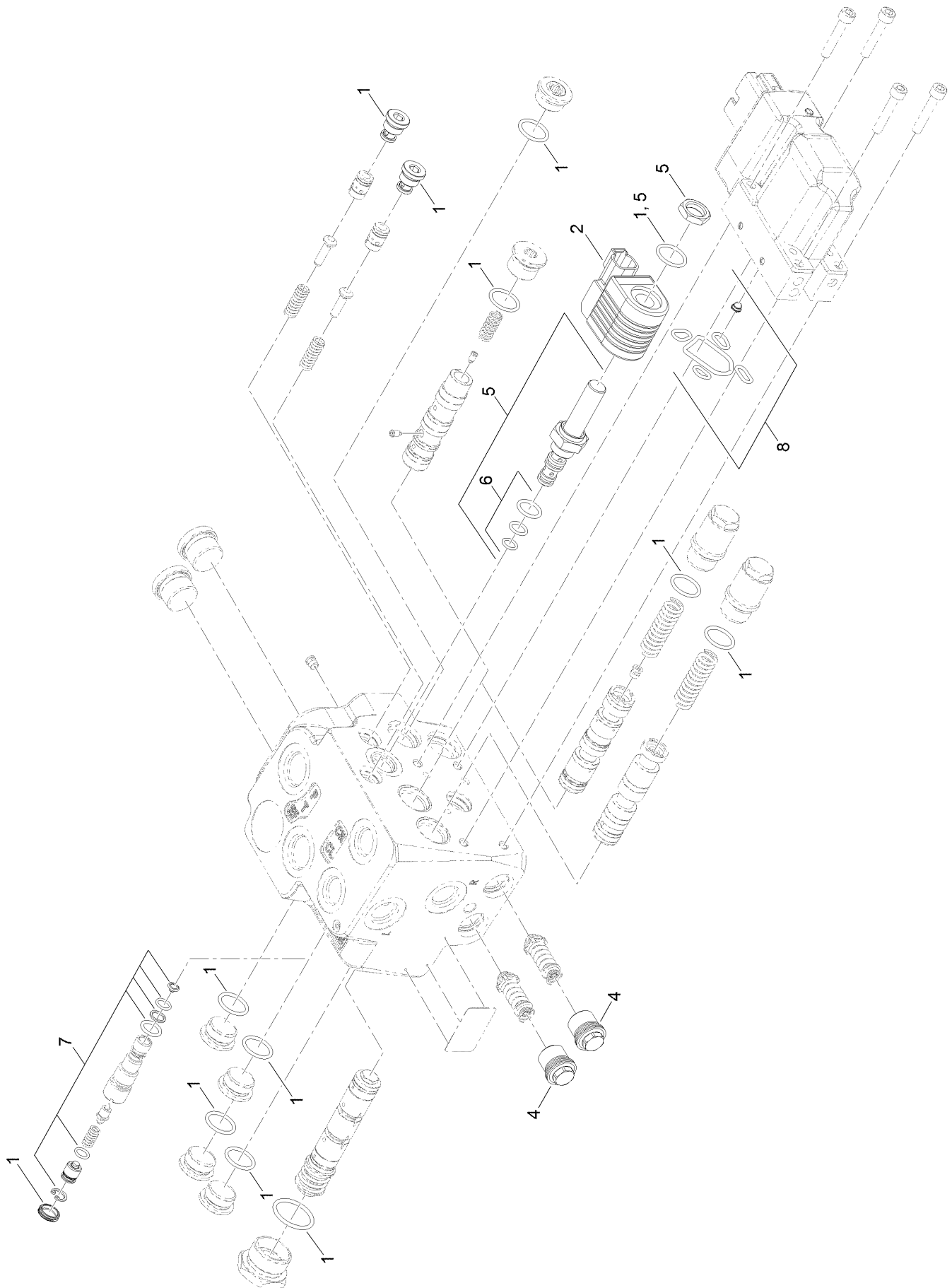


## Autosteering Assembly (continued)

<i>Ref.</i>	<i>Part Number</i>	<i>Qty.</i>	<i>Description</i>	<i>Ref.</i>	<i>Part Number</i>	<i>Qty.</i>	<i>Description</i>
1	138-6159-03	1	Mount-Manifold	20	3290-313	2	Screw-SPH
2	137-4076	1	Valve-Steering Ehi	21	3296-52	2	Nut-Lock, NI
3	138-6187	2	Fitting-STR	22	119-6921	4	Nut-Hex, Flange
3:1	138-6247	1	Seal-Oring	23	138-6194	1	Hose ASM
3:2	237-22	1	O-Ring	31	3234-4	4	Screw-HHF
4	137-4294	4	Fitting-STR	33	138-6250	1	Hose ASM
4:1	138-6249	1	O-Ring M22	34	138-6179	1	Tool-Alignment
4:2	237-30	1	O-Ring	35	138-6256	1	Hose ASM
5	137-4295	4	Fitting-STR	36	125-7996	1	Switch-Pb, Momentary
5:1	138-6248	1	O-Ring M18	37	95-8999	1	Switch
5:2	237-22	1	O-Ring	38	138-6259	1	Decal-Transportation Switch
6	104-9082	2	U-Bolt	39	122-1598	1	Harness-Wire, Autosteer
7	33104-016	3	Screw-HHF	40	240-5	1	Grommet
9	138-6153	1	Hose ASM	42	138-6278	1	Decal-Engage, Autosteer
10	138-6154	1	Hose ASM	43	237-21	3	O-Ring
11	138-6170	1	Hose ASM	44	237-22	6	O-Ring
12	138-6171	1	Hose ASM	45	237-30	1	O-Ring
13	138-6188	1	Hose ASM	99	117-2382	6	Plug-Plastic ●
14	138-6191	1	Hose ASM	99	218-578	1	Fuse-Blade, 10 Amp ●
15	138-6245	1	Hose ASM	99	3272-12	2	Pin-Cotter ●
16	104-8301	4	Nut-HF, NI	99	3272-18	1	Pin-Cotter ●
17	112-8617	1	Nut-Hex	99	3290-378	10	Tie-Cable ●
18	138-6178-03	1	Bracket-Sensor	99	340-152	1	Cap-HYD ●
19	138-6252	1	Sensor-Rotary				

● Not illustrated

# Hydraulic Valve Assembly No. 137-4076



## Hydraulic Valve Assembly No. 137-4076 (continued)

<i>Ref.</i>	<i>Part Number</i>	<i>Qty.</i>	<i>Description</i>
1	138-6270	1	Seal Kit
2	138-6271	1	Coil Kit
4	138-6273	1	Shock Valve Kit
5	138-6274	1	Cartridge Kit

<i>Ref.</i>	<i>Part Number</i>	<i>Qty.</i>	<i>Description</i>
6	138-6275	1	Spool Kit
7	138-6276	1	Relief Valve Kit
8	138-6277	1	Pve Kit



**Count on it.**