



Greensmaster[®] 3100
3 Wheel Drive Traction Unit
Model No. 04354—20000601 and Up

Parts Catalog

Ordering Replacement Parts

To order replacement parts, please supply: the part number, the quantity, and the description of each part desired.

Understanding Reference Numbers

Each identified part in an illustration has a reference number. The reference number for a part also appears in the parts list, along with other information about the part.

This catalog uses two special reference number formats, one to indicate parts in a service assembly and another to indicate the quantity of a given part in an illustration.

Service Assembly Reference Numbers

Parts in service assemblies have reference numbers in the form **a:b**. The **a** represents the reference number of the entire service assembly and the **b** represents a sequential number unique to each part within the service assembly.

For example, a wheel assembly might be identified by reference number **6**, the tire by **6:1**, the valve by **6:2**, and the wheel by **6:3**. When you order the assembly identified by reference number **6**, you receive all parts identified by reference numbers **6:1**, **6:2**, and **6:3**. However, you may also order any part individually.

Reference numbers of this type appear in illustrations and in part lists.

Reference Numbers Indicating Quantity

In an illustration, if a reference number indicates more than one part, the reference number has the form **nX y**. The **n** represents the quantity of the part, the **X** is the multiplication symbol, and the **y** represents the reference number.

For example, in an illustration, the reference number **2X 37** means that two of the parts identified by reference number **37** are indicated.

Contents

Description	Page
Control Pedal Assembly	4-5
Traction Controls Assembly	6
Front Wheel and Brake Assembly	7
Hydraulic Drive Motor Assembly No. 92-9199 ...	8
Steering Arm Assembly	9
Power Steering Valve No. 92-8690	10
Pull Frame Assembly R.H.	11
Hydraulic Cylinder Assembly No. 99-8159	12
Pull Frame Assembly L.H.	13
Pull Frame Assembly Rear	14
Hydraulic Cylinder No. 99-8160	15
Seat Assembly	16-17
Control Valve Installation Assembly	18
Engine Installation Assembly	20
Hydraulic Pump Installation Assembly	21
Hydraulic Pump 92-9764	22
Frame Assembly	23

Description	Page
Rear Wheel Assembly	24-25
Hydraulic Cylinder Assembly No. 83-2330	26
Hydraulic Drive Motor Assembly No. 92-9169 ...	27
Control Panel Assembly	28
Electrical Schematic	29
Hydraulic Reservoir Assembly	30
Fuel Tank Assembly	31
Reel Motor Installation Assembly	32
Reel Motor No.94-3506	33
Hydraulic Schematic	34
Control Valve Assembly No. 84-2203 (Sections 1&2)	35-36
Control Valve Assembly No. 84-2203 (Sections 3 Thru 5)	37-38
Special Tools	39-40
Engine Briggs & Stratton Model 303447-1408-E1	41-51

Accessories

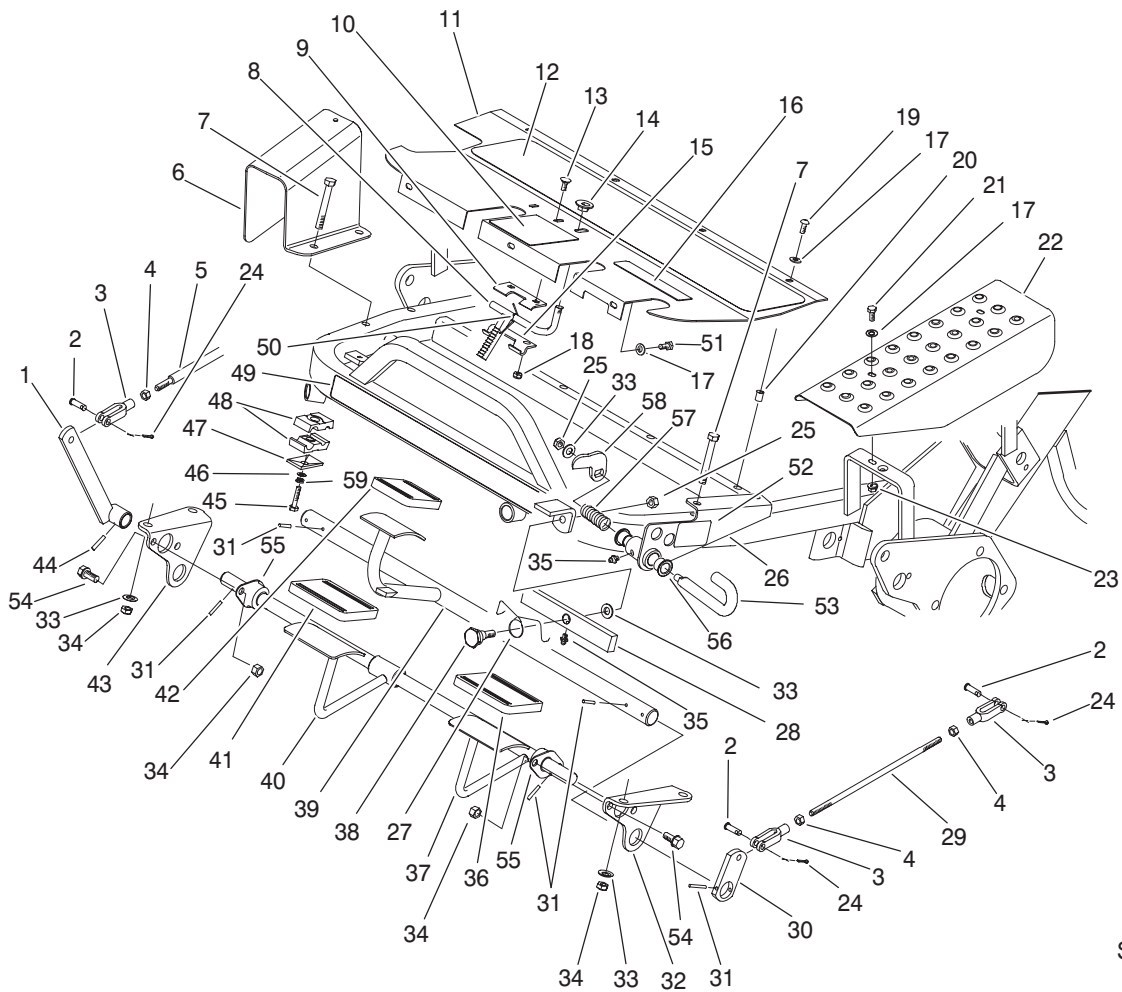
Description	Model / Part No.
Individual Reel Shut Off Kit	28-2150
Basket Reinforcement Kit	26-0900
Thatching Reels	04493
Variable Speed Kit	04422
Traction Tire	231-124
Armrests	30707
Spiker	04494
Tri-Roller	04495
Backlapping Kit	92-9656
Backlap Kit - 2 Speed, 3 Position	94-1870

Description	Model / Part No.
8 Blade, 4 Bolt (Heavy Duty) Cutting Unit	04404
8 Blade, 4 Bolt Cutting Unit	04408
11 Blade, 4 Bolt Cutting Unit	04406
8 Blade, SPA Cutting Unit	04468
11 Blade, SPA Cutting Unit	04450
8 Blade, 4 Bolt Cutting Unit	04480
11 Blade, 4 Bolt Cutting Unit	04481
8 Blade, SPA Cutting Unit	04482
11 Blade, SPA Cutting Unit	04483

Part Description Abbreviations

Part descriptions in this catalog may include the following abbreviations.

Abbreviation	Meaning	Abbreviation	Meaning
AR	as required	INC	incorporated
ASM	assembly	LH	left hand
CARR	carriage	NI	nylon insert
DEG	degrees	PPH	Phillips pan head
FH	flat head	PTH	Phillips truss head
GA	gauge	PTO	power take off
HF	hex flange	RH	right hand
HH	hex head	SFH	slotted fillister head
HHF	hex head flange	SHH	slotted hex head
HLH	hex lag head	SQH	square head
HJ	hex jam	SHWH	slotted hex washer head
HOC	height-of-cut	SPH	slotted pan head
HS	hex socket	SRH	slotted round head
HSBH	hex socket button head	STD	standard
HSFH	hex socket flat head	TAP	self tapping
HSH	hex socket head	TTH	Torx truss head
HWH	hex washer head	WH	wing head
HWHTF	hex washer head thread forming		

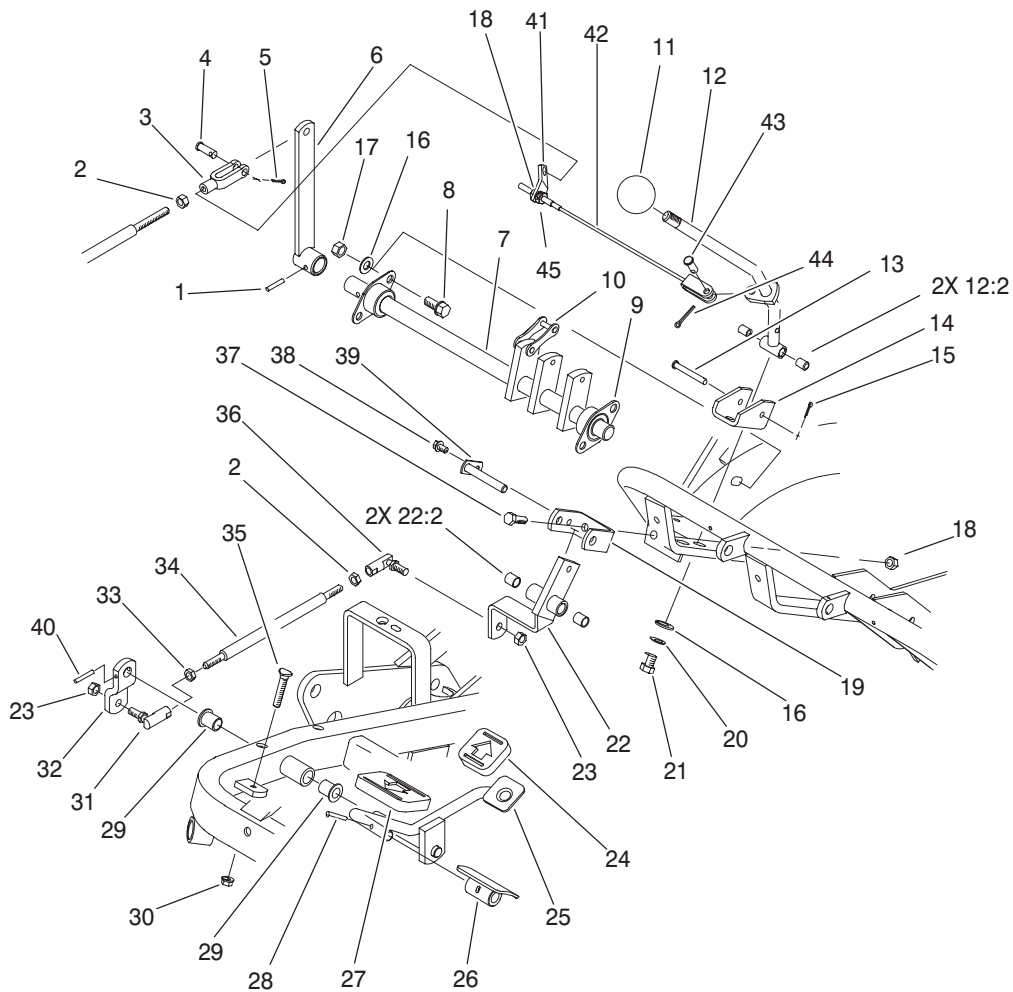


Sheet No.: 2

Control Pedal Assembly

Ref. No.	Part No.	Qty.	Description
1	49-6200-01	1	Lever-Cutting
2	283-61	5	Pin-Yoke
3	282-2	5	Yoke
4	3220-2	5	Nut-Jam
5	49-5430	1	Rod-Control
6	49-6110-01	1	Guard
7	323-13	4	Screw-HH
8	10-7850	1	Latch-Brake, Parking
9	95-1628	1	Hinge - Upper
10	93-8062	1	Decal-Brake, Parking
11	83-0640-01	1	Plate-Footrest
12	49-6120	1	Pad-Footrest
13	3229-11	2	Screw-CARR
14	32141-111	1	Nut-Adjusting
15	95-1629	1	Hinge - Lower
16	93-8075	1	Decal-Mow/Lift
17	3256-1	9	Washer-Flat
18	3296-16	2	Nut-Lock, NI
19	3274-31	4	Screw-HSBH
20	32148-6	8	Nut-Insert
21	321-4	2	Screw-HH
22	83-0200-01	1	Plate-Cover, LH
23	32128-33	2	Nut-HF
24	3272-6	5	Pin-Cotter
25	3296-39	2	Nut-Lock, NI
26	93-9901-01	1	Bracket-Lockout, Mow

Ref. No.	Part No.	Qty.	Description
27	83-0080	1	Spring-Pivot, Lift
28	83-0060	1	Lift - Pivot
29	27-2270	2	Rod-Adjustment, Brake
30	10-8100-01	2	Strap-Shaft, Brake
31	32121-35	8	Pin-Roll
32	88-9640-01	1	Bracket-Lift Pivot, LH
33	3256-38	6	Washer-Flat
34	3296-59	8	Nut-Lock, NI
35	302-5	2	Fitting - Lube
36	93-7631	1	Pad-Foot, Lift
37	88-9660	1	Shaft-Control, Cut
38	83-2590	1	Bolt-Shoulder, Pivot
39	83-0160	1	Shaft-Brake
40	83-0140	1	Pedal-Mow
41	93-7630	1	Pad-Foot
42	93-7629	1	Pad-Foot, Brake
43	88-9630-01	1	Bracket-Lift Pivot, RH
44	32121-6	1	Pin-Roll
45	321-11	1	Screw-HH
46	3256-22	1	Washer-Flat
47	69-9760	1	Coverplate
48	56-7970	2	Clamp-Tube
49	93-2548	1	Decal - Gr 3100 3wd
50	10-8140	1	Bracket-Spring, Latch
51	321-3	3	Screw-HH

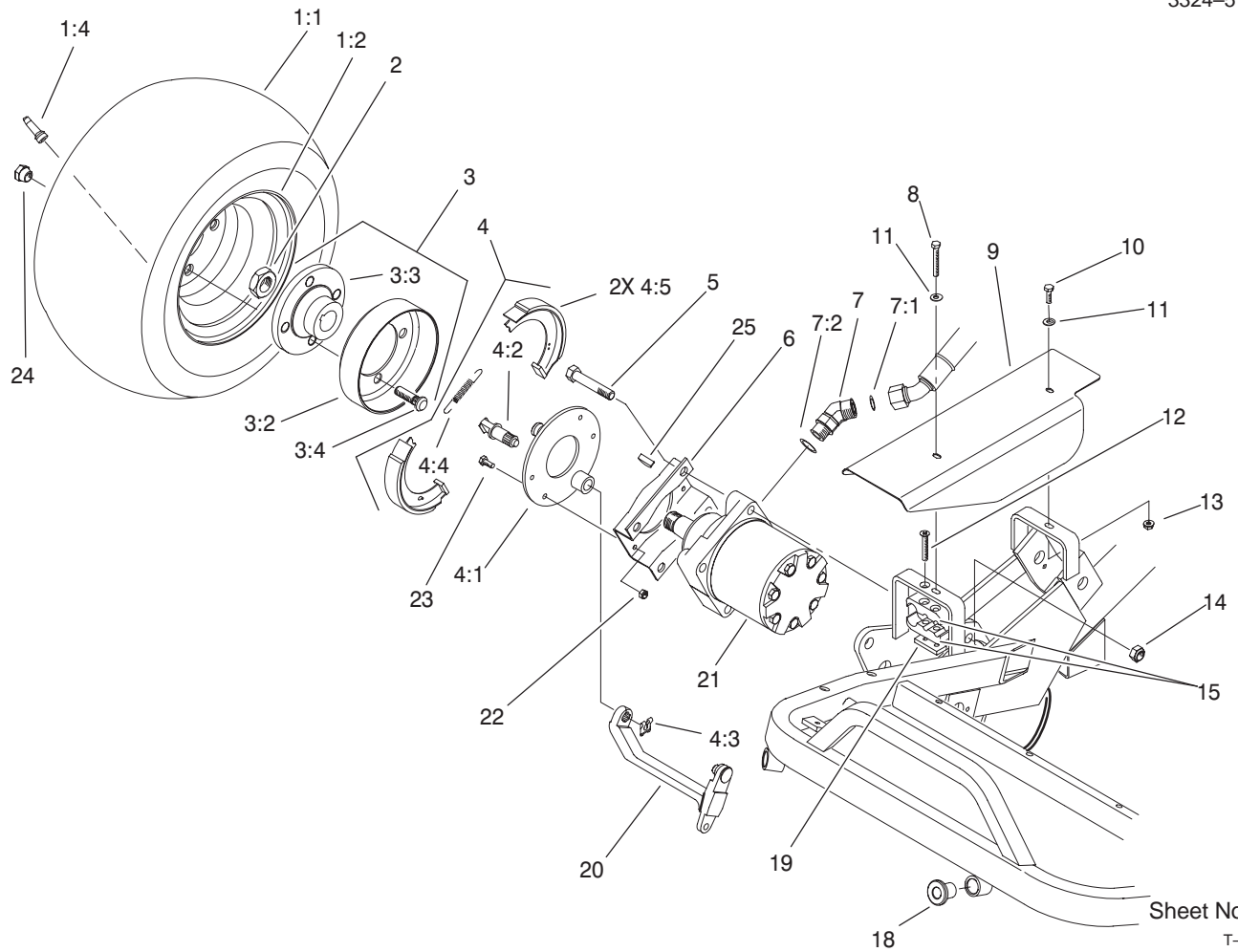


Sheet No.: 3

Traction Controls Assembly

Ref. No.	Part No.	Qty.	Description
1	32121-6	1	Pin-Roll
2	3220-2	3	Nut-Jam
3	282-2	1	Yoke
4	283-61	1	Pin-Yoke
5	3272-6	1	Pin-Cotter
6	47-5320-01	1	Lever
7	44-0870	1	Cam Shaft ASM
8	3234-1	4	Screw-HHF
9	27-2320	2	Bearing
10	57-6220	5	Link-Connecting
11	233-48	1	Knob
12	93-9934	1	Handle-Traction
12:2	256-251	2	Bushing
13	283-57	1	Pin
14	49-6220	1	Bracket-Arm, Control
15	3272-4	1	Pin-Cotter
16	3256-24	6	Washer-Flat
17	3296-59	4	Nut-Lock, NI
18	3296-29	3	Nut-Lock, NI
19	49-6250	1	Bracket-Pivot
20	3254-6	2	Washer-Lock, Int.
21	3211-2	2	Screw-HH
22	49-6260	1	Pivot ASM
22:2	256-2	2	Bushing
23	3296-4	2	Nut-Lock, NI
24	74-9110	1	Pad-Pedal, Reverse

Ref. No.	Part No.	Qty.	Description
25	83-0540-01	1	Traction Pedal ASM
26	49-6440-03	1	Pedal-Forward
27	74-9100	1	Pad-Pedal, Forward
28	32121-45	1	Pin-Spring
29	256-155	2	Bushing-Flange
30	32128-20	1	Nut-HF
31	2411-42	1	Joint-Ball, LH
32	83-0630	1	Arm-Pivot, Traction
33	3220-20	1	Nut-Jam LH
34	83-0580	1	Rod-Control, Traction
35	17-9420	1	Screw - Handle
36	2411-43	1	Joint-Ball
37	322-5	2	Screw-HH
38	12-3270	1	Screw
39	49-6290	1	Pivot Shaft ASM
40	32121-51	1	Pin-Roll
41	93-9936	1	Bracket-Return, Traction
42	93-9937	1	Traction Cable ASM
43	283-62	1	Pin-Clevis
44	3272-10	1	Pin-Cotter
45	3217-6	1	Nut-Hex



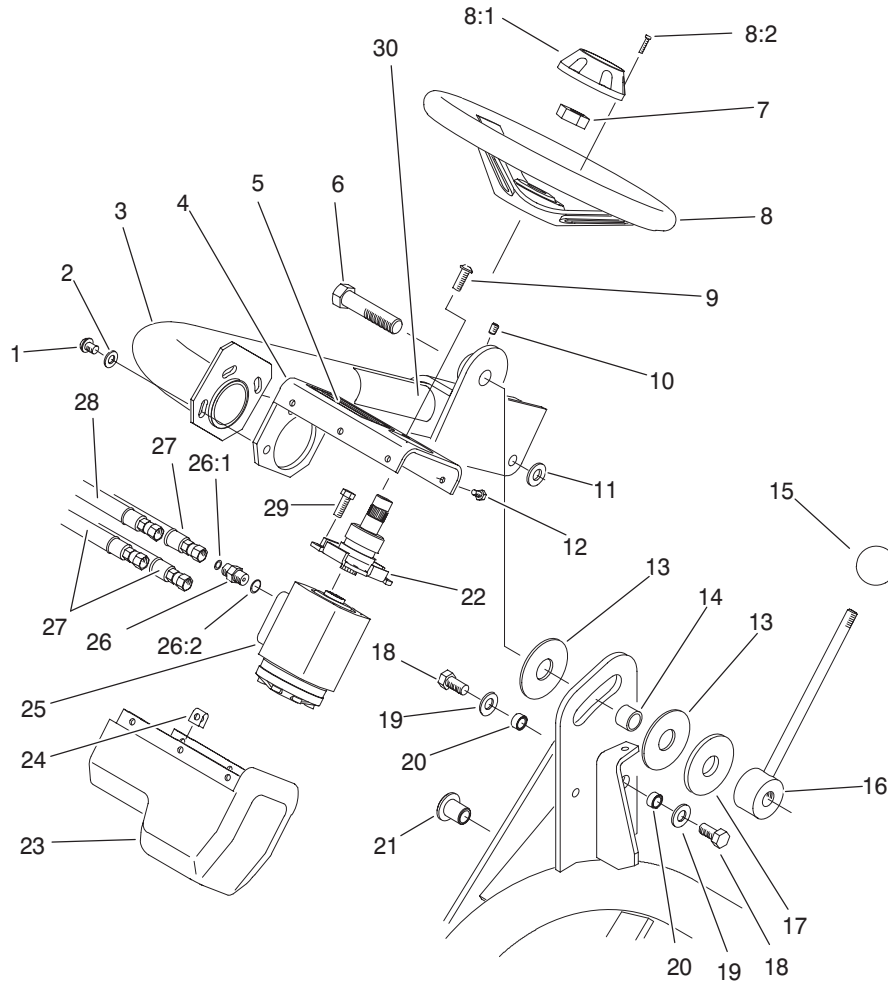
Sheet No.: 4
T-3355

Front Wheel and Brake Assembly

Ref. No.	Part No.	Qty.	Description
1		2	Wheel & Tire ASM
1:1	28-3680	1	Tire
1:2	217-60	1	Rim
1:4	232-24	1	Stem-Valve
*1:5	232-37	1	Tube
2	26-3790	2	Nut-Lock
3	10-6821	2	Brake Drum ASM
3:2	10-6850	1	Drum-Brake
3:3	10-6870-03	1	Hub-Wheel
3:4	85-6540	4	Stud-Drive
4	71-1500	2	Brake ASM
4:1	70-9870	1	Plate-Backing
4:2	70-9860	1	Cam-Brake
4:3	70-9850	1	Clip-Retaining
4:4	70-9880	2	Spring-Return
4:5	70-9840	2	Shoe-Brake
5	325-11	8	Screw-HH
6	84-2000-03	2	Bracket-Brake
7	340-14	4	Fitting-Hyd., 45°
7:1	237-65	1	O-Ring
7:2	237-80	1	O-Ring
8	321-11	1	Screw-HH
9	83-0190-01	1	Cover-RH
10	321-4	1	Screw-HH
11	3256-22	2	Washer-Flat
12	32108-100	1	Screw-FH

Ref. No.	Part No.	Qty.	Description
13	32128-33	1	Nut-HF
14	3296-23	8	Nut-Lock, NI
15	57-6140	2	Clamp-Tube, Half
18	83-1700	2	Bushing - Flange
19	83-1220	1	Plate-Clamp
20	93-2096	2	Lever - Brake
21	92-9199	2	Motor-Hydraulic
22	3296-42	8	Nut-Lock
23	321-5	8	Screw-HH
24	242-50	8	Nut-Lug
25	3257-42	2	Key-Woodruff

* Not illustrated

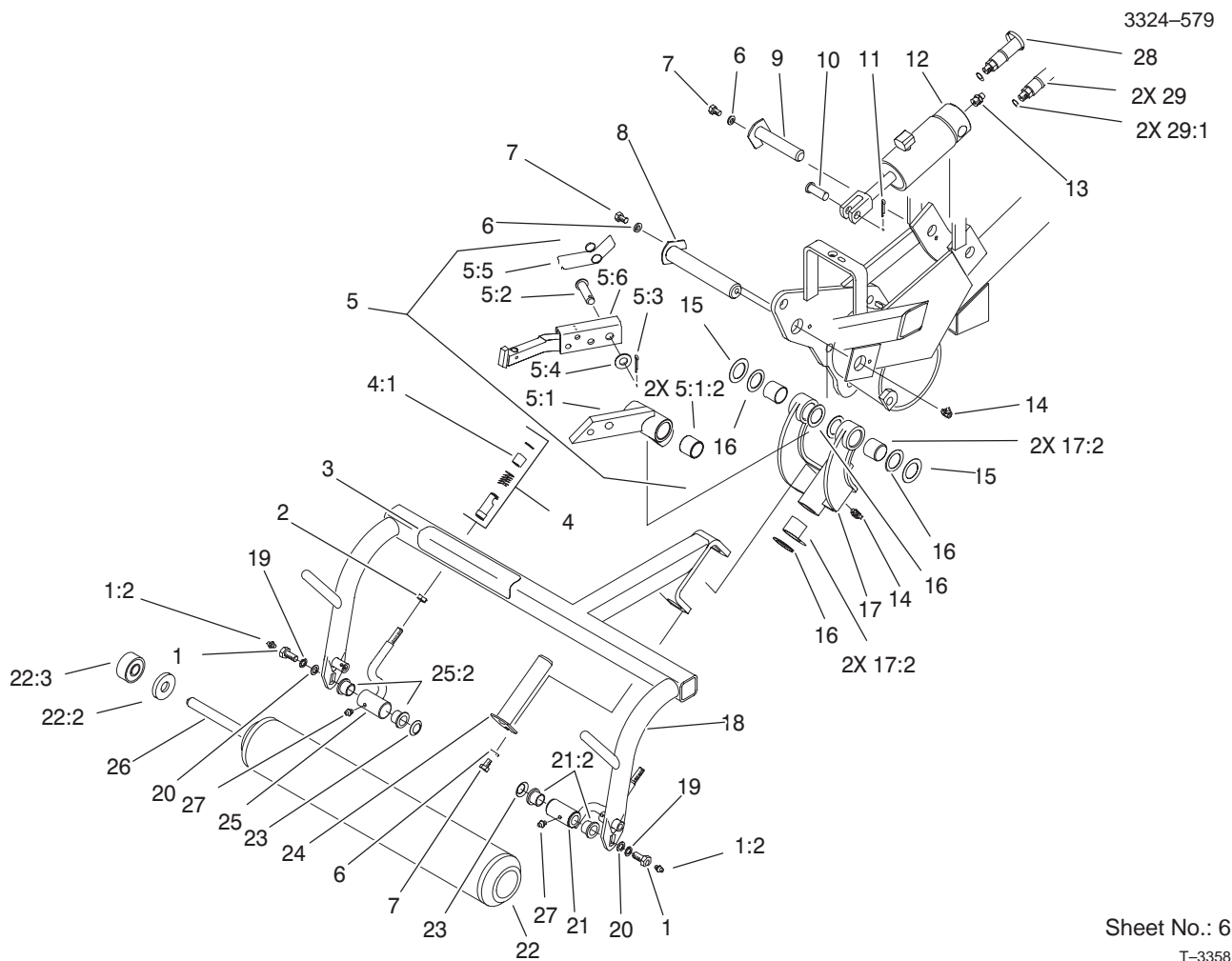


Sheet No.: 5

Steering Arm Assembly

Ref. No.	Part No.	Qty.	Description
1	3274-80	3	Screw-HH
2	3256-80	3	Washer-Flat
3	83-0650-01	1	Arm-Steering
4	83-0780-03	1	Support-Valve, Steering
5	93-8063	1	Decal-Warning
6	83-0750	1	Capscrew-HH, LH Thread
7	47-6990	1	Nut
8	68-5130	1	Wheel-Steering
8:1	68-5140	1	Cap-Wheel, Steering
8:2	32144-21	1	Screw
9	3274-63	2	Screw-HSH
10	3246-3	1	Screw-HS
11	65-6390	1	Washer - Thrust, Plain
12	3274-39	6	Screw-HSBH
13	83-0740	2	Disc - Friction
14	83-0730	1	Spacer - Lockup
15	233-48	1	Knob
16	83-0700-03	1	Handle-Lockup
17	83-0760	1	Spacer-Plate, Lockup
18	325-4	2	Screw-HH
19	3256-26	2	Washer-Flat
20	47-2890	2	Bushing
21	83-1700	1	Bushing - Flange
22	83-1420	1	Column-Steering

Ref. No.	Part No.	Qty.	Description
23	83-0810	1	Cover - Steering
24	3290-277	6	Nut-Speed
25	92-8690	1	Valve-Control, Steering
26	340-1	4	Adapter
26:1	237-35	1	O-Ring
26:2	237-42	1	O-Ring
27	83-1350	3	Hose-Hydraulic
28	83-1360	1	Hose-Hydraulic
29	323-4	2	Screw-HH
30	93-8068	1	Decal-Arm, Steering

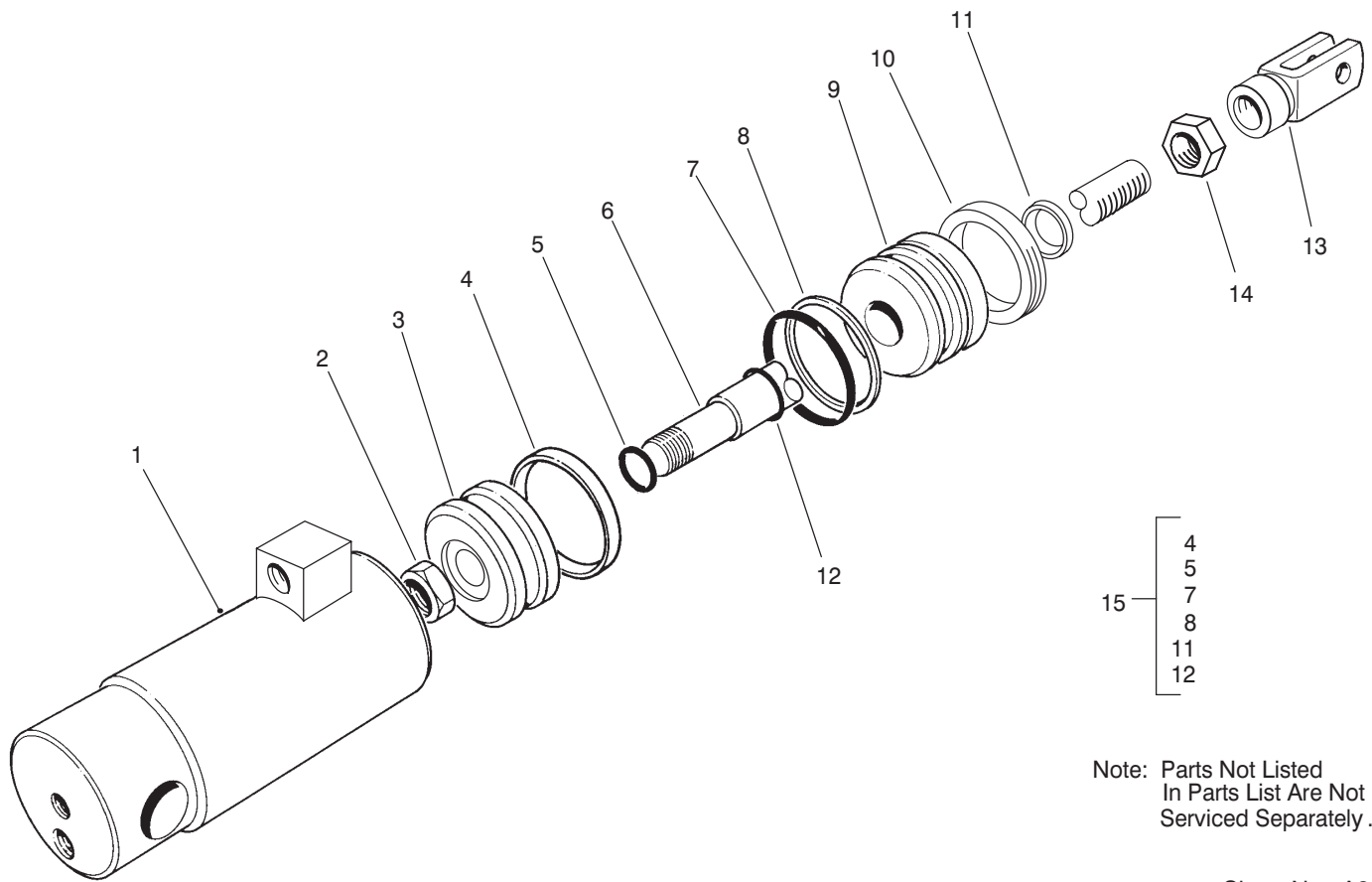


Sheet No.: 6
T-3358

Pull Frame Assembly R.H.

Ref. No.	Part No.	Qty.	Description
1	11-0160	2	Roller Shaft Screw ASM
1:2	302-5	1	Fitting - Lube
2	3220-3	2	Nut-Jam
3	93-8064	1	Decal-Danger
4	99-1460	2	Ball Joint Receiver ASM
4:1	99-1461	1	Sleeve-Joint, Ball
5		1	RH Lift Arm ASM
5:1	62-2440	1	Lift Arm ASM
5:1:2	3-0348	2	Bushing
5:2	63-8750	1	Pin-Pivot
5:3	3272-11	1	Pin-Cotter
5:4	3256-26	1	Washer-Flat
5:5	57-7650	1	Spring-Torsion
5:6	94-5588-01	1	Bar-Lift, R/H
6	3256-23	3	Washer-Flat
7	322-1	3	Screw-HH
8	10-6110	1	Pin-Hinge
9	10-6060	1	Pin-Pivot, Ram
10	283-8	1	Pin-Clevis
11	3272-11	1	Pin-Cotter
12	99-8159	1	Hydraulic Cylinder ASM
13	302-2	1	Fitting-Grease
14	302-60	2	Fitting-Lube

Ref. No.	Part No.	Qty.	Description
15	5-1226	2	Washer
16	10-8110	6	Washer-Thrust
17	10-7820	1	Pivot Hinge ASM
17:2	3-0348	4	Bushing
18	92-9177-01	1	Frame-Pull, RH
19	3253-21	2	Washer-Lock
20	3256-24	2	Washer-Flat
21	92-0586	1	Pull Arm ASM
21:2	3-1506	2	Bushing
22	99-4277	1	Roller ASM
22:2	253-83	1	Oil Seal
22:3	251-141	2	Bearing-Ball
23	3290-317	2	Washer-Spring
24	10-6090	1	Pin-Pivot
25	92-0585	1	Pull Arm ASM
25:2	3-1506	2	Bushing
26	21-8470	1	Shaft-Roller
27	302-5	2	Fitting - Lube
28	3290-378	1	Tie-Cable
29	92-9767	2	Hose
29:1	237-78	1	O-Ring



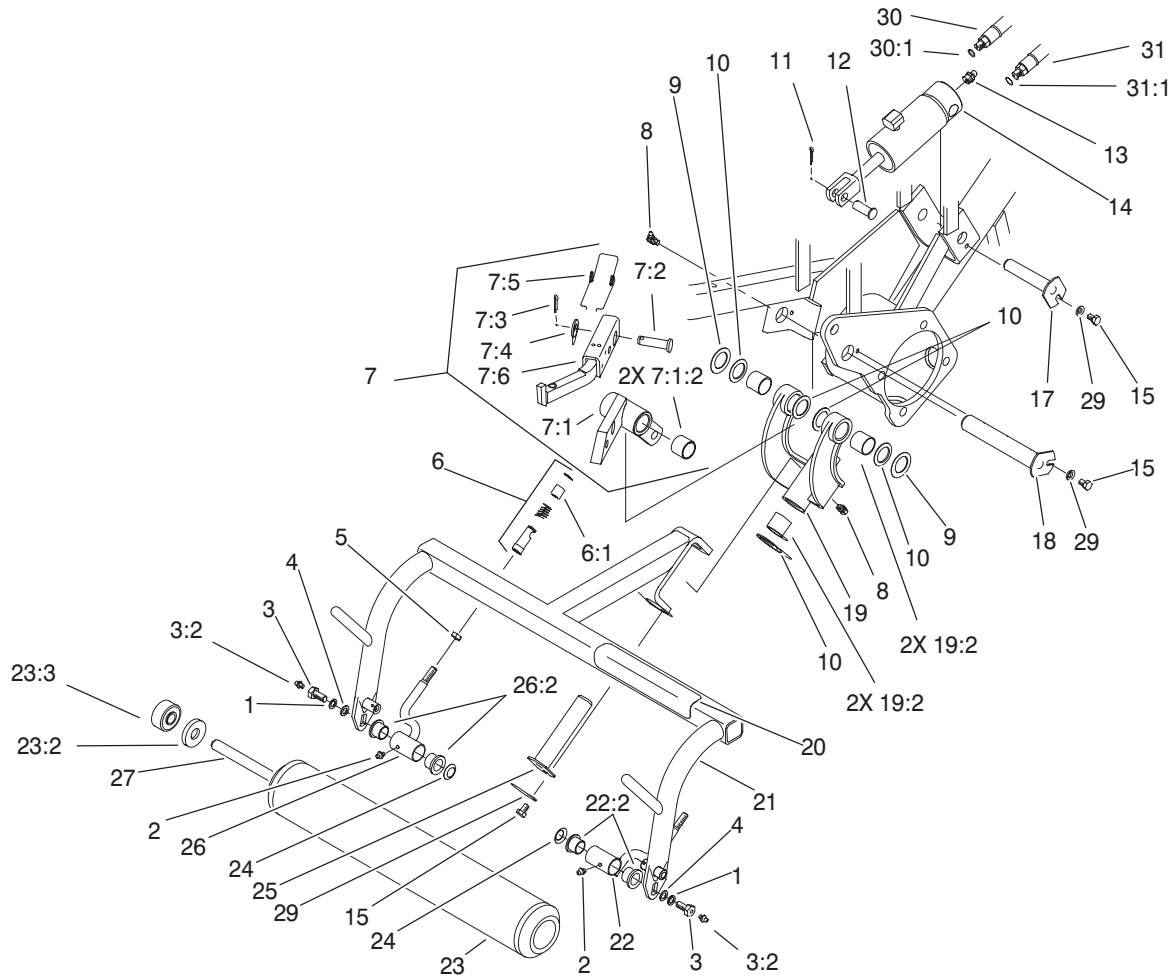
Note: Parts Not Listed
In Parts List Are Not
Serviced Separately.

Sheet No.: A3
T-3359

Hydraulic Cylinder Assembly No. 99-8159

Ref. No.	Part No.	Qty.	Description
2	32152-10	1	Locknut-Deform, Top
3	52-1990	1	Piston-Cylinder, Hydraulic
13	76-1850	1	Clevis
14	3220-6	1	Nut-Jam
15	99-8163	1	Kit-Repair, Seal

Ref. No.	Part No.	Qty.	Description

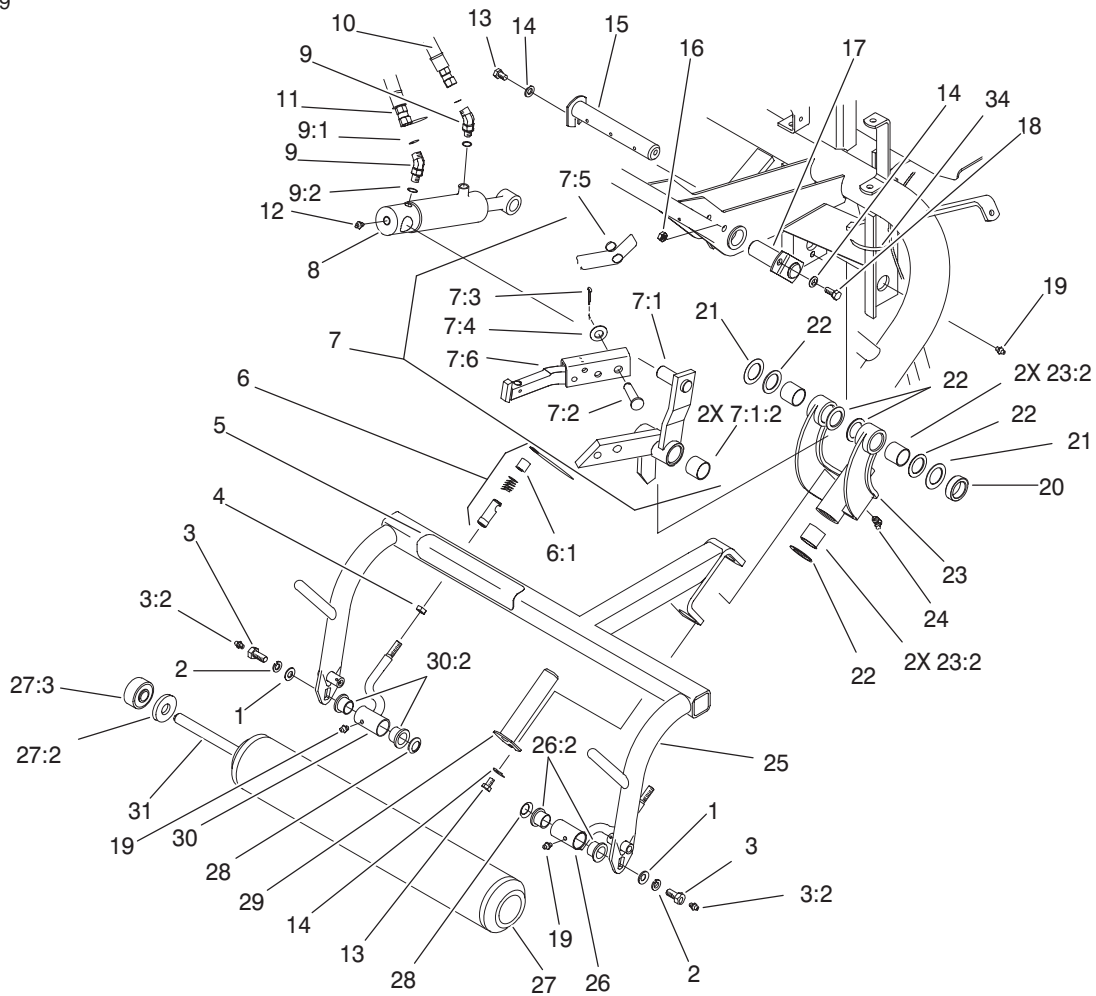


Sheet No.: 7
T-3360

Pull Frame Assembly L.H.

Ref. No.	Part No.	Qty.	Description
1	3253-21	2	Washer-Lock
2	302-5	2	Fitting - Lube
3	11-0160	2	Roller Shaft Screw
3:2	302-5	1	Fitting - Lube
4	3256-24	2	Washer-Flat
5	3220-3	2	Nut-Jam
6	99-1460	2	Ball Joint Receiver
6:1	99-1461	1	Sleeve-Joint, Ball
7		1	LH Lift Arm ASM
7:1	62-2460	1	Lift Arm ASM
7:1:2	3-0348	2	Bushing
7:2	63-8750	1	Pin-Pivot
7:3	3272-11	1	Pin-Cotter
7:4	3256-26	1	Washer-Flat
7:5	57-7650	1	Spring-Torsion
7:6	94-5586-01	1	Bar-Lift, LH
8	302-60	2	Fitting-Lube
9	5-1226	2	Washer
10	10-8110	6	Washer-Thrust
11	3272-11	1	Pin-Cotter
12	283-8	1	Pin-Clevis
13	302-2	1	Fitting-Grease
14	99-8159	1	Hydraulic Cylinder

Ref. No.	Part No.	Qty.	Description
15	322-1	3	Screw-HH
17	10-6060	1	Pin-Pivot, Ram
18	10-6110	1	Pin-Hinge
19	10-7820	1	Pivot Hinge ASM
19:2	3-0348	4	Bushing
20	93-8064	1	Decal-Danger
21	92-9176-01	1	Frame-Pull, LH
22	92-0586	1	Pull Arm ASM
22:2	3-1506	2	Bushing
23	99-4277	1	Roller ASM
23:2	253-83	1	Oil Seal
23:3	251-141	2	Bearing-Ball
24	3290-317	2	Washer-Spring
25	10-6090	1	Pin-Pivot
26	92-0585	1	Pull Arm ASM
26:2	3-1506	2	Bushing
27	21-8470	1	Shaft-Roller
29	3256-23	3	Washer-Flat
30	63-3850	1	Hose ASM
30:1	237-78	1	O-Ring
31	83-1690	1	Hose-Hydraulic
31:1	237-78	1	O-Ring



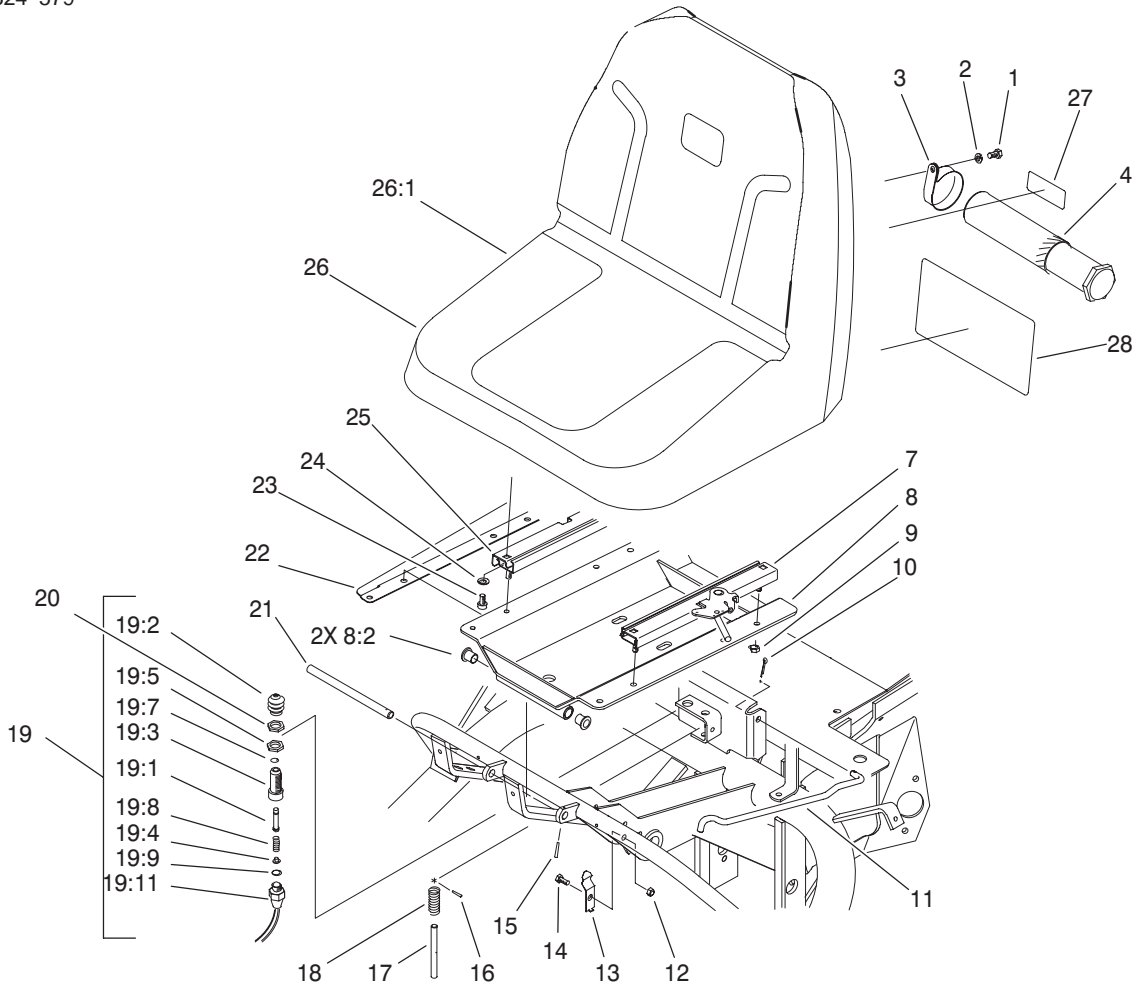
Sheet No.: 8

T-3361

Pull Frame Assembly Rear

Ref. No.	Part No.	Qty.	Description
1	3256-24	2	Washer-Flat
2	3253-21	2	Washer-Lock
3	11-0160	2	Roller Shaft Screw
3:2	302-5	1	Fitting - Lube
4	3220-3	2	Nut-Jam
5	93-8064	1	Decal-Danger
6	99-1460	2	Ball Joint Receiver
6:1	99-1461	1	Sleeve-Joint, Ball
7		1	Center Lift Arm ASM
7:1	68-5380	1	Center Lift Arm ASM
7:1:2	3-0348	2	Bushing
7:2	63-8750	1	Pin-Pivot
7:3	3272-11	1	Pin-Cotter
7:4	3256-26	1	Washer-Flat
7:5	57-7650	1	Spring-Torsion
7:6	62-2420-01	1	Bar-Lift
8	99-8160	1	Hydraulic Cylinder
9	340-103	2	Fitting
9:1	237-78	1	O-Ring
9:2	237-21	1	O-Ring
10	83-1680	1	Hose-Hydraulic
11	88-9700	1	Hose-Hydraulic
12	302-2	1	Fitting-Grease

Ref. No.	Part No.	Qty.	Description
13	322-1	2	Screw-HH
14	3256-23	3	Washer-Flat
15	27-2550	1	Pin-Hinge
16	3296-29	1	Nut-Lock, NI
17	68-5560	1	Pin-Cylinder, Pivot
18	322-3	1	Screw-HH
19	302-5	3	Fitting - Lube
20	93-2384	1	Spacer - Carrier
21	5-1226	2	Washer
22	10-8110	6	Washer-Thrust
23	10-7820	1	Pivot Hinge ASM
23:2	3-0348	4	Bushing
24	302-60	1	Fitting-Lube
25	86-9820-01	1	Frame-Pull, Rear
26	92-0586	1	Pull Arm ASM
26:2	3-1506	2	Bushing
27	99-4277	1	Roller ASM
27:2	253-83	1	Oil Seal
27:3	251-141	2	Bearing-Ball
28	3290-317	2	Washer-Spring
29	10-6090	1	Pin-Pivot
30	92-0585	1	Pull Arm ASM
30:2	3-1506	2	Bushing
31	21-8470	1	Shaft-Roller
34	3290-379	1	Tie-Cable



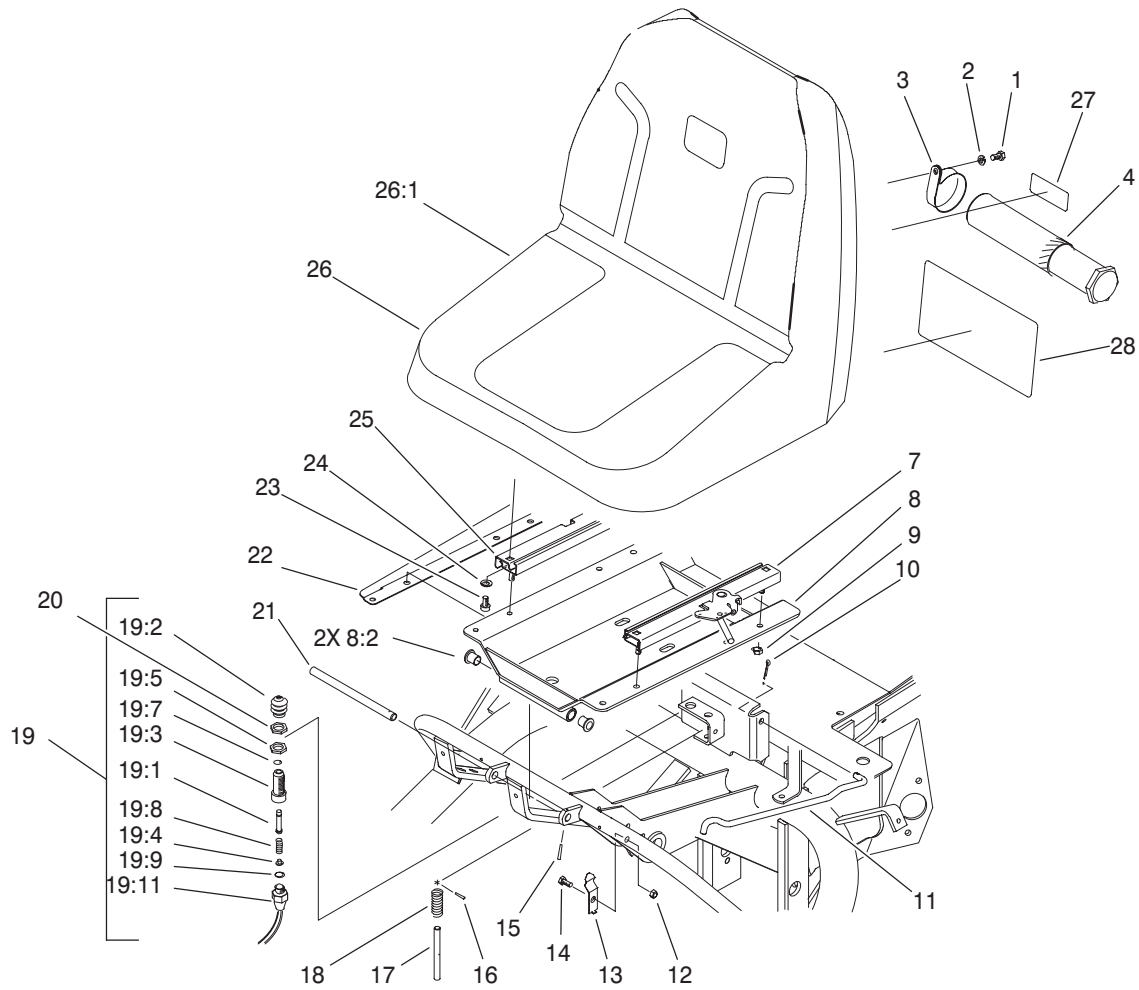
Sheet No.: 9
T-3363

Seat Assembly

Ref. No.	Part No.	Qty.	Description
1	322-2	2	Screw-HH
2	3253-4	2	Washer
3	2412-133	2	R-Clamp
4	74-0720	1	Tube-Manual
7	51-0790	1	Adjuster-Seat, LH
8	83-1270	1	Seat Support ASM
8:2	256-155	2	Bushing-Flange
9	3296-29	4	Nut-Lock, NI
10	3272-11	1	Pin-Cotter
11	68-5100	1	Rod-Seat, Prop
12	3296-16	1	Nut-Lock, NI
13	68-5310	1	Clip-Rod, Prop
14	321-3	1	Screw-HH
15	32121-45	1	Pin-Spring
16	3284-3	1	Pin-Groove
17	51-0350	1	Pin-Spring, Seat
18	3-6685	1	Spring
19	43-9071	1	Limit Switch ASM
19:1	43-8860	1	Plunger-Switch
19:2	43-8870	1	Switch Boot
19:3	43-8620	1	Guide-Pin, Switch
19:4	43-8610	1	Guide
19:5	218-461	1	Nut-HH
19:7	237-7	1	O-Ring
19:8	43-8600	1	Spring-Compression
19:9	237-30	1	O-Ring

Ref. No.	Part No.	Qty.	Description
19:11	72-4320	1	Switch
20	218-461	1	Nut-HH
21	49-5880	1	Shaft-Support, Seat
22	83-1840-01	1	Cover-Valve, RH
23	3274-12	4	Screw-HSH
24	3256-23	4	Washer-Flat
25	51-0780	1	Slider-Seat
26	100-3187	1	Seat ASM
26:1	92-6534	1	Shell
*26:2	351-80	1	Clip
*26:3	351-78	1	Edging
*26:4	100-6411	1	Cushion-Replacement
27	93-8067	1	Decal-Oil, Hydraulic
28	84-9280	1	Decal-Service, Italian
28	93-7257	1	Decal-Service, Portugese
28	93-7258	1	Decal-Service, Norwegian
28	93-7259	1	Decal-Service, Finnish
28	93-7260	1	Decal-Service, Danish
28	93-7261	1	Decal-Service, Dutch
28	83-2490	1	Decal-Service, Japanese
28	84-9240	1	Decal-Service, Spanish

* Not illustrated

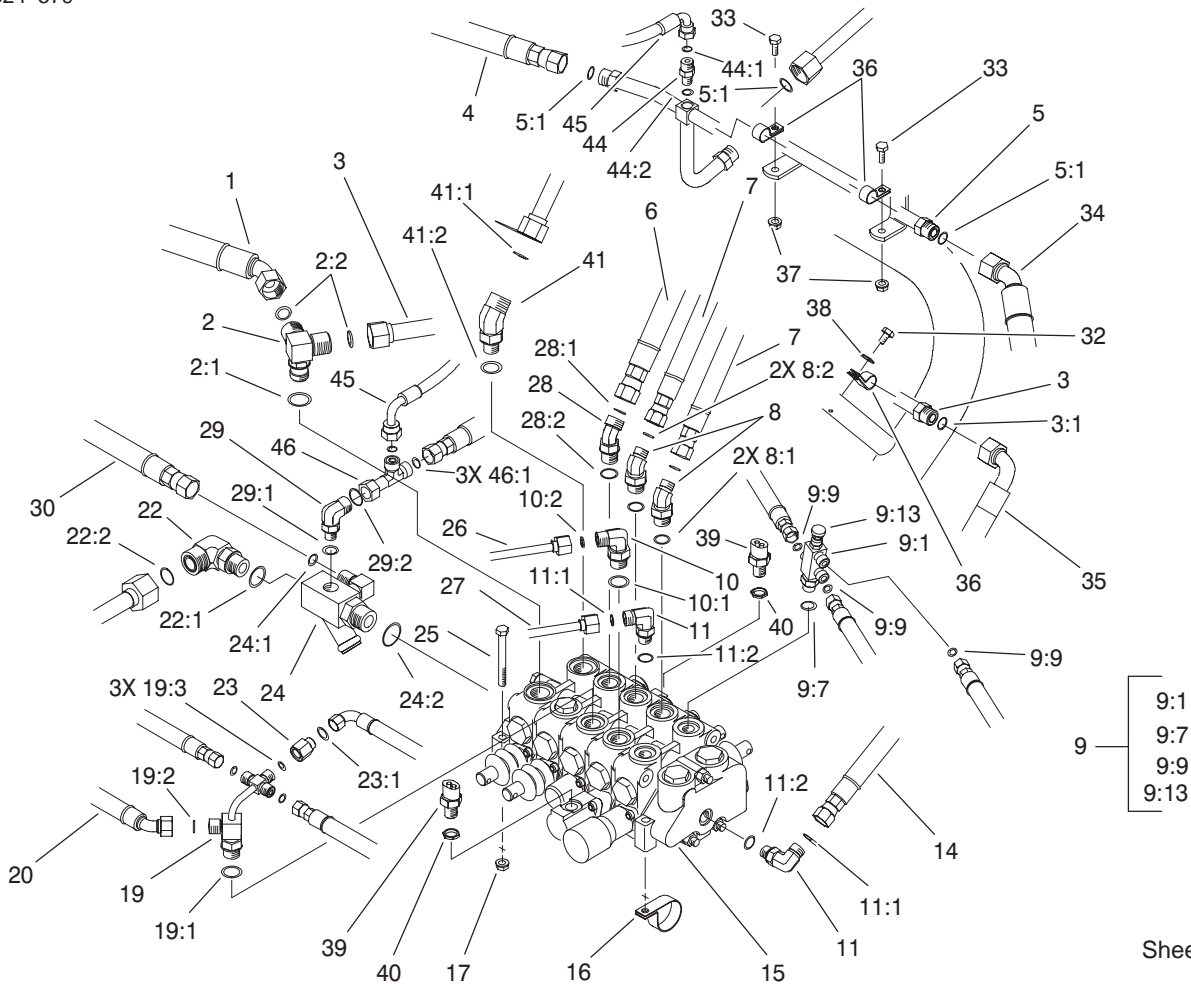


Sheet No.: 9
T-3363

Seat Assembly (Continued)

Ref. No.	Part No.	Qty.	Description
28	84-9270	1	Decal-Service, Swedish
28	84-9260	1	Decal-Service, German
28	84-9250	1	Decal-Service, French
28	94-8036	1	Decal - Service

Ref. No.	Part No.	Qty.	Description

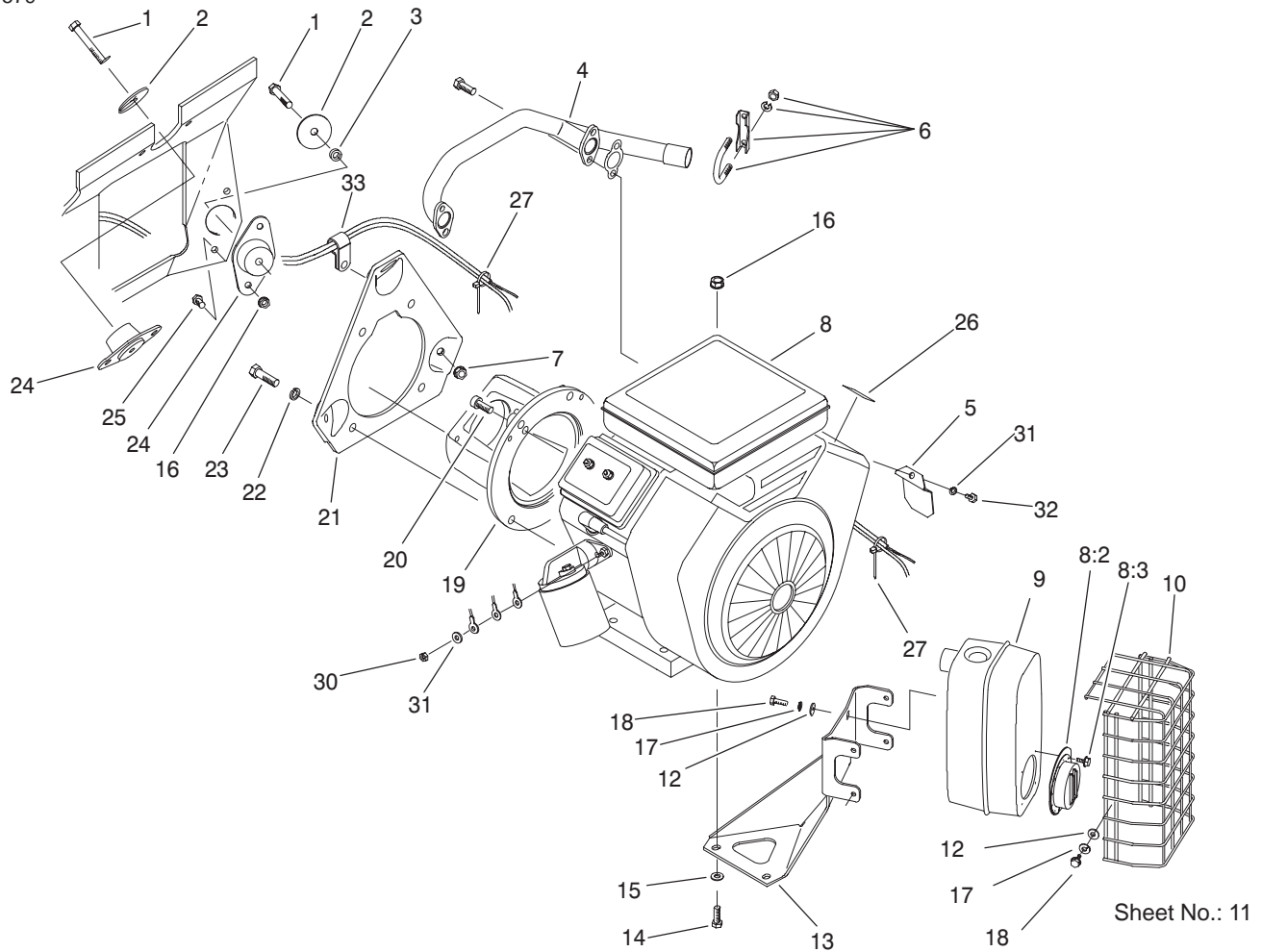


Sheet No.: 10
T-3364

Control Valve Installation Assembly

Ref. No.	Part No.	Qty.	Description
1	98-0647	1	Hose-Hydraulic
2	63-4050	1	Fitting
2:1	237-80	1	O-Ring
2:2	237-65	2	O-Ring
3	70-7130	1	Line-Tube
3:1	237-65	2	O-Ring
4	98-2152	1	Hose ASM - Hyd
5	93-0113	1	Tube - Traction
5:1	237-65	3	O-Ring
6	98-2151	1	Hose-Hydraulic
7	98-0649	2	Hose-Hydraulic
8	340-138	2	Fitting
8:1	237-79	1	O-Ring
8:2	237-22	1	O-Ring
9	93-2556	1	Needle Valve ASM
9:1	93-2555	1	Fitting - Body
9:7	237-42	1	O-Ring
9:9	237-21	3	O-Ring
9:13	93-2554	1	Needle ASM
10	340-18	1	Fitting
10:1	237-79	1	O-Ring
10:2	237-22	1	O-Ring
11	340-77	2	Fitting-Hyd., 90°
11:1	237-22	1	O-Ring
11:2	237-42	1	O-Ring
14	98-2150	1	Hose-Hydraulic

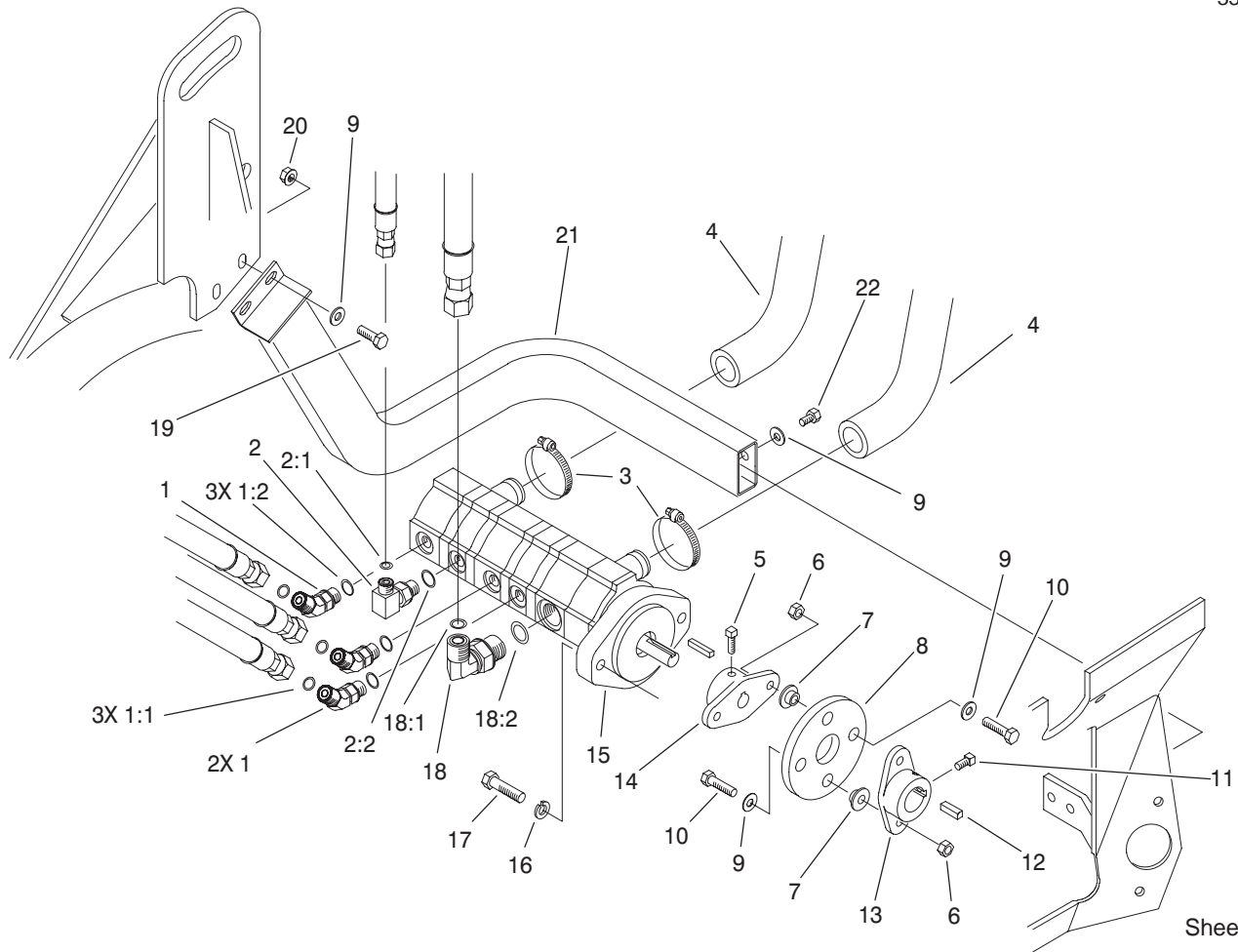
Ref. No.	Part No.	Qty.	Description
15	84-2203	1	Valve-Control, 5 Spool
16	304-61	1	Clamp-Hose
17	32128-20	3	Nut-HF
19	83-1670	1	Fitting ASM
19:1	237-79	1	O-Ring
19:2	237-22	1	O-Ring
19:3	237-21	3	O-Ring
20	95-5986	1	Hose-Hydraulic
22	340-16	1	Fitting-Hyd., 90°
22:1	237-80	1	O-Ring
22:2	237-58	1	O-Ring
23	71-0990	1	Orifice
23:1	237-21	1	O-Ring
24	68-5260	1	Manifold-Tee
24:1	237-30	1	O-Ring
24:2	237-81	1	O-Ring
25	322-14	3	Screw-HH
26	63-4030	1	Tube-Hydraulic
27	63-4020	1	Tube-Hydraulic
28	340-101	1	Fitting
28:1	237-30	1	O-Ring
28:2	237-79	1	O-Ring
29	340-82	1	Adapter
29:1	237-42	1	O-Ring
29:2	237-21	1	O-Ring
30	95-5987	1	Hose-Hydraulic



Engine Installation Assembly

Ref. No.	Part No.	Qty.	Description
1	323-12	3	Screw-HH
2	83-1040	3	Washer - Flat
3	83-1050	2	Spacer
4	83-1080	1	Exhaust Manifold ASM
5	83-2310	1	Shield - Regulator
6	2112-11	1	Clamp-Muffler
7	3290-357	3	Nut-Flange, Lock
8	100-6424	1	Engine-16hp
8:2	83-2220	1	Deflector-Exhaust
8:3	83-2230	4	Screw-HH
9	98-0616	1	Muffler ASM
10	83-1400-03	1	Shield-Muffler
12	3256-1	8	Washer-Flat
13	83-1630-03	1	Bracket-Support, Muffler
14	322-8	2	Screw-HH
15	3256-23	2	Washer-Flat
16	32128-20	8	Nut-HF
17	3253-3	8	Washer-Lock/Sp
18	49-2040	8	Screw-Taptite
19	83-1060-03	1	Adapter-Pump
20	3274-7	2	Screw-HSH
21	85-8120-03	1	Plate-Monut, Engine
22	3253-6	4	Washer-Lock/Sp
23	324-7	4	Screw-HH
24	83-1030	3	Mount-Engine

Ref. No.	Part No.	Qty.	Description
25	322-3	6	Screw-HH
26	93-8069	1	Decal-Surface, Hot
27	3290-378	3	Tie-Cable
30	43-2830	1	Nut-Hex
31	43-5930	2	Washer-Spring
32	33113-016	1	Screw-HH
33	2412-81	1	Clamp

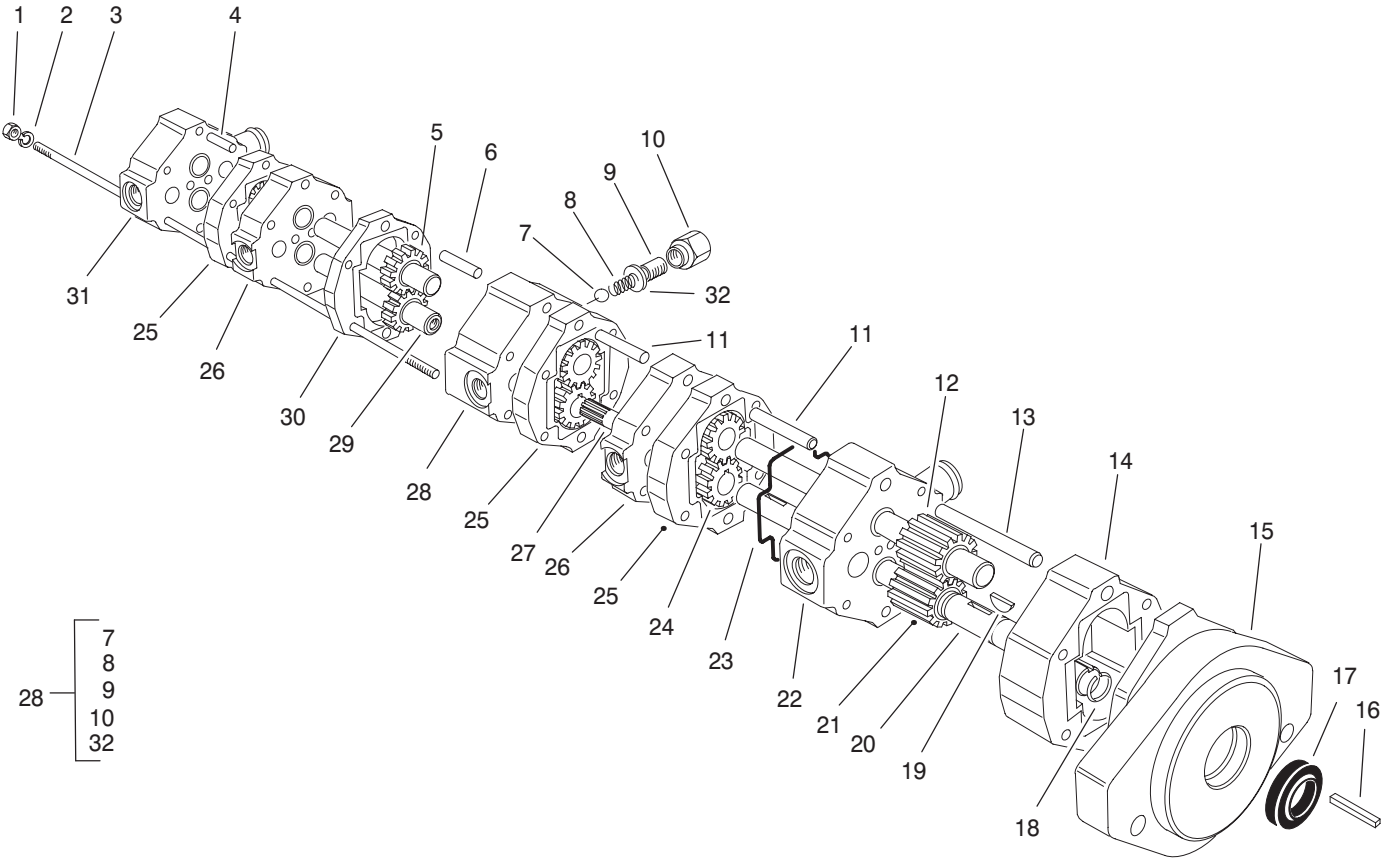


Sheet No.: 12
T-3365

Hydraulic Pump Installation Assembly

Ref. No.	Part No.	Qty.	Description
1	340-87	3	Fitting-Hydraulic, 45 DEG
1:1	237-22	1	O-Ring
1:2	237-42	1	O-Ring
2	340-82	1	Adapter
2:1	237-42	1	O-Ring
2:2	237-21	1	O-Ring
3	2412-34	2	Clamp-Hose
4	83-0910	2	Hose-Inlet, Pump
5	3241-6	2	Screw-SQH
6	3296-29	4	Nut-Lock, NI
7	27-6600	4	Spacer-Coupling
8	44-2230	1	Coupling-Rubber
9	3256-23	8	Washer-Flat
10	322-6	4	Screw-HH
11	3241-2	2	Screw-SQH
12	10-7070	1	Key-Square
13	27-1960	1	Hub-Engine
14	27-1970	1	Hub-Pump
15	92-9764	1	Hydraulic Pump ASM
16	3253-21	2	Washer-Lock
17	323-8	2	Screw-HH
18	340-105	1	Fitting-Hyd., 90°
18:1	237-80	1	O-Ring
18:2	237-30	1	O-Ring
19	322-4	2	Screw-HH

Ref. No.	Part No.	Qty.	Description
20	32128-20	2	Nut-HF
21	83-1940-01	1	Guard-Pump
22	322-1	2	Screw-HH



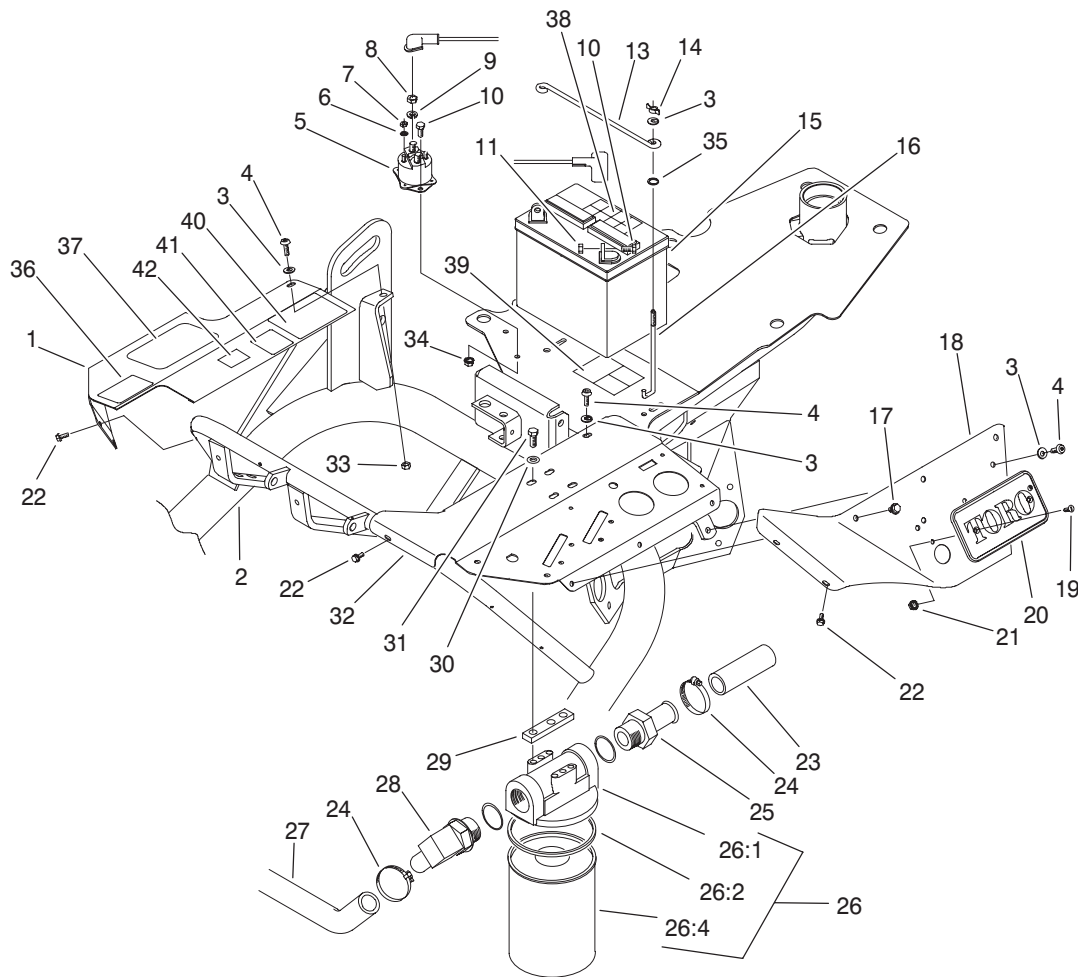
Note: Parts Not Listed
In Parts List Are Not
Serviced Separately .

Sheet No.: A5
T-3374

Hydraulic Pump 92-9764

Ref. No.	Part No.	Qty.	Description
1	3217-6	4	Nut-Hex
2	354-16	4	Washer
3	354-17	4	Stud
4	354-11	2	Dowel
5	354-9	1	Idler Shaft & Gear ASM
6	354-12	2	Dowel
11	354-13	4	Dowel
12	92-9774	1	Shaft
13	354-14	2	Pin-Dowel
14	92-9766	1	Plate-Gear
15	354-2	1	Body ASM
16	5-0946	1	Key-Square
17	354-15	1	Seal-Oil
18	353-886	2	Ring-Retaining
19	353-884	4	Key
20	92-9772	1	Shaft-Drive
21	92-9773	1	Gear - 59b
22	354-3	1	Bearing Plate ASM
23	353-922	10	Ring-Seal
24	353-967	6	Gear
25	353-969	3	Plate-Gear
26	353-923	2	Plate
27	354-5	1	Adaptor-Splined
28	354-4	1	Bearing Plate ASM

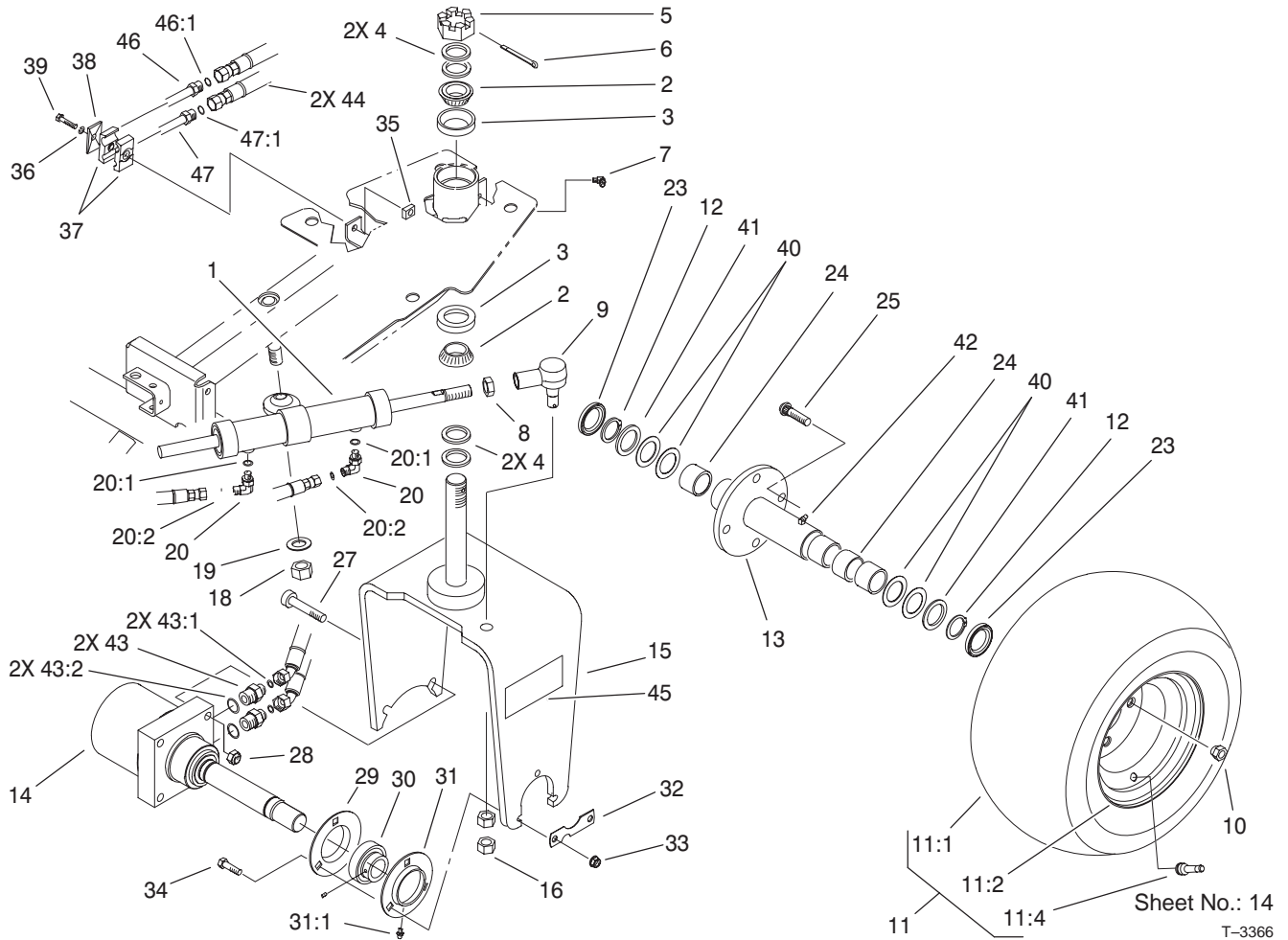
Ref. No.	Part No.	Qty.	Description
29	354-8	1	Drive Shaft & Gear ASM
30	354-6	1	Plate-Gear
31	354-7	1	Pump Cover ASM
32	354-35	1	Gasket



Sheet No.: 13

Frame Assembly

Ref. No.	Part No.	Qty.	Description	Ref. No.	Part No.	Qty.	Description
1	94-2694-01	1	Cover-RH	26:1	44-5560	1	Head-Filter, Oil
2	92-9164-01	1	Frame ASM	26:2	72-3850	1	Seal-Filter, Oil
3	3256-22	5	Washer-Flat	26:4	74-3570	1	Filter
4	3274-69	3	Screw-HSBH	27	68-5880	1	Hose-Hydraulic
5	28-4210	1	Solenoid	28	353-564	1	Fitting-90°
6	3254-1	2	Washer-Lock/Int	29	27-2380	2	Spacer
7	3219-14	2	Nut-Hex	30	3256-23	4	Washer-Flat
8	3218-13	2	Nut-Jam	31	322-4	4	Screw-HH
9	3253-4	2	Washer	32	83-0830-01	1	Panel-Control, Upper
10	321-3	4	Screw-HH	33	3296-16	3	Nut-Lock, NI
11	3217-5	2	Nut-Hex	34	32149-2	2	Nut-Keps
13	72-4790	1	Hold Down-Battery	35	237-143	2	O-Ring
14	32103-12	2	Nut-Wing	36	93-8065	1	Decal-Traction
15	92-1677	1	Battery-Dry	37	67-1300	1	Decal - Toro
16	56-7720	2	Post-Battery	38	93-7276	1	Decal - Danger
17	46-8560	3	Screw-HHF	39	93-6668	1	Decal - Battery
18	83-0840-01	1	Shield-Cover, Valve	40	92-5524	1	Decal-Rating, Noise
19	3290-470	2	Screw-HSFH	41	63-9920	1	Decal-Level, Noise
20	61-3310	1	Plate-Logo	42	93-7252	1	Decal-International
21	32149-7	2	Nut-Keps				
22	32104-76	5	Screw-Slot, Acorn				
23	83-1430	1	Hose-Line, Return				
24	2412-34	3	Clamp-Hose				
25	353-563	1	Fitting-Hydraulic, Straight				
26		1	Filter & Head ASM				

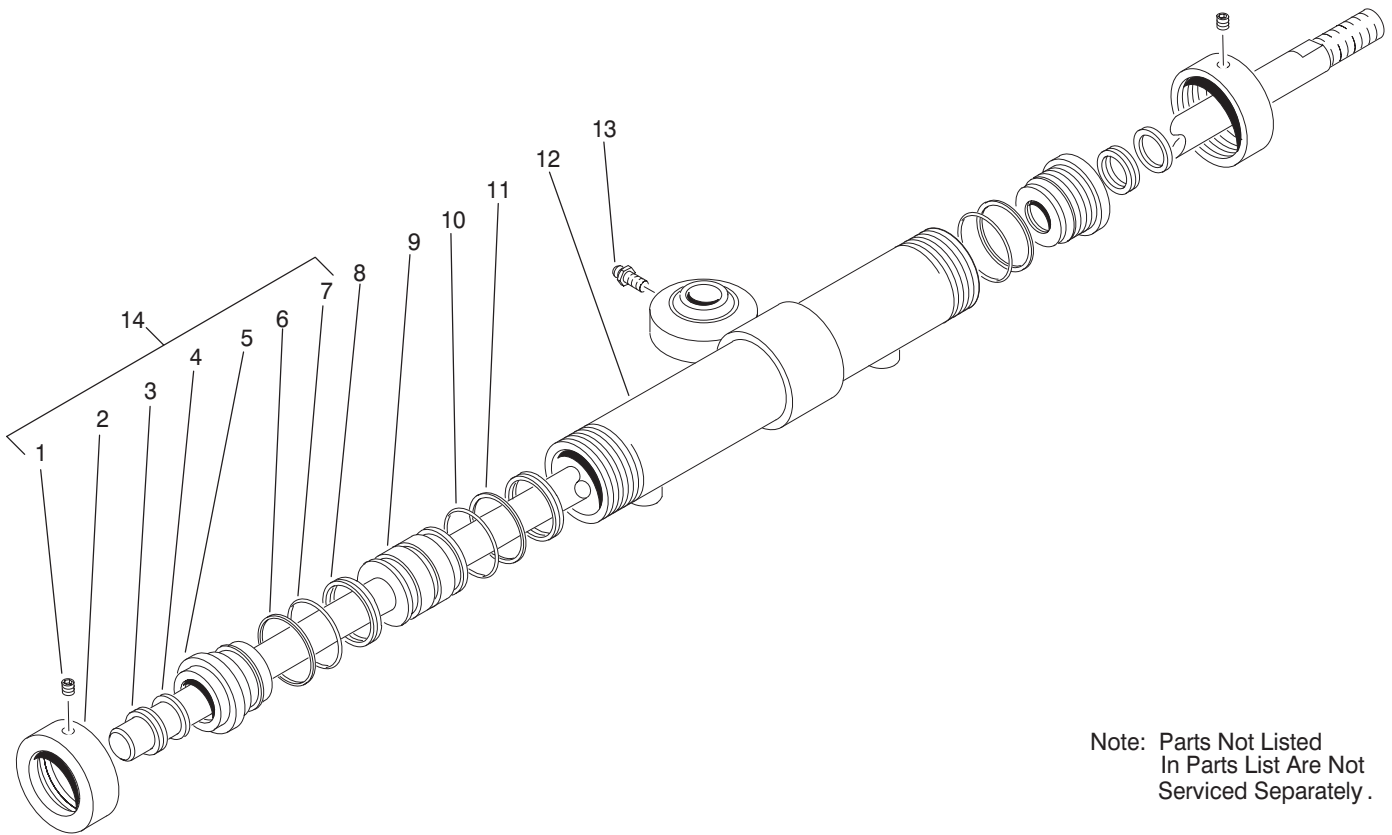


Rear Wheel Assembly

Ref. No.	Part No.	Qty.	Description
1	83-2330	1	Cylinder – Steering
2	254-70	2	Cone-Bearing
3	254-61	2	Cup-Bearing
4	18-6320	4	Washer-Steering
5	32136-9	1	Nut-Hex, Slot
6	3272-37	1	Pin-Cotter
7	302-11	1	Fitting-Lube, 45°
8	84-5300	1	Nut-Jam
9	83-1640-03	1	Rod End ASM
10	242-50	4	Nut-Lug
11		1	Wheel & Tire ASM
11:1	28-3680	1	Tire
11:2	217-60	1	Rim
11:4	232-24	1	Stem-Valve
*11:5	232-37	1	Tube
12	32151-10	2	Ring-Snap
13	92-9152	1	Hub ASM
14	92-9169	1	Hyd Motor
15	93-2529-01	1	Castor Fork Wa
16	3220-6	2	Nut-Jam
18	3217-12	1	Nut-Hex
19	3256-28	1	Washer-Flat
20	340-132	2	Elbow-90°
20:1	237-78	1	O-Ring
20:2	237-21	1	O-Ring
23	92-9165	2	Seal

Ref. No.	Part No.	Qty.	Description
24	92-9167	4	Clutch-Roller
25	10-6830	4	Stud-Type, Drive
27	3274-93	2	Screw-HSH
28	3296-23	2	Nut-Lock, NI
29	85-8950	1	Flangette-STD
30	251-352	1	Bearing
31	85-8940	1	Flangette-Relube
31:1	302-5	1	Fitting – Lube
32	88-8350	1	Tab-Bearing
33	3296-39	3	Nut-Lock, NI
34	323-29	3	Screw-HH
35	3290-496	1	Nut-Retainer
36	3253-4	1	Washer
37	56-7971	2	Clamp-Tube
38	69-9760	1	Coverplate
39	322-10	1	Screw-HH
40	92-9166	4	Washer-Thrust
41	92-9159	2	Washer
42	302-40	1	Fitting-Grease
43	340-7	2	Adapter
43:1	237-65	1	O-Ring
43:2	237-80	1	O-Ring
44	92-9197	2	Hyd Hose
45	92-9752	2	Decal
46	93-0114	1	Tube – Rear, Top
46:1	237-65	1	O-Ring

* Not illustrated



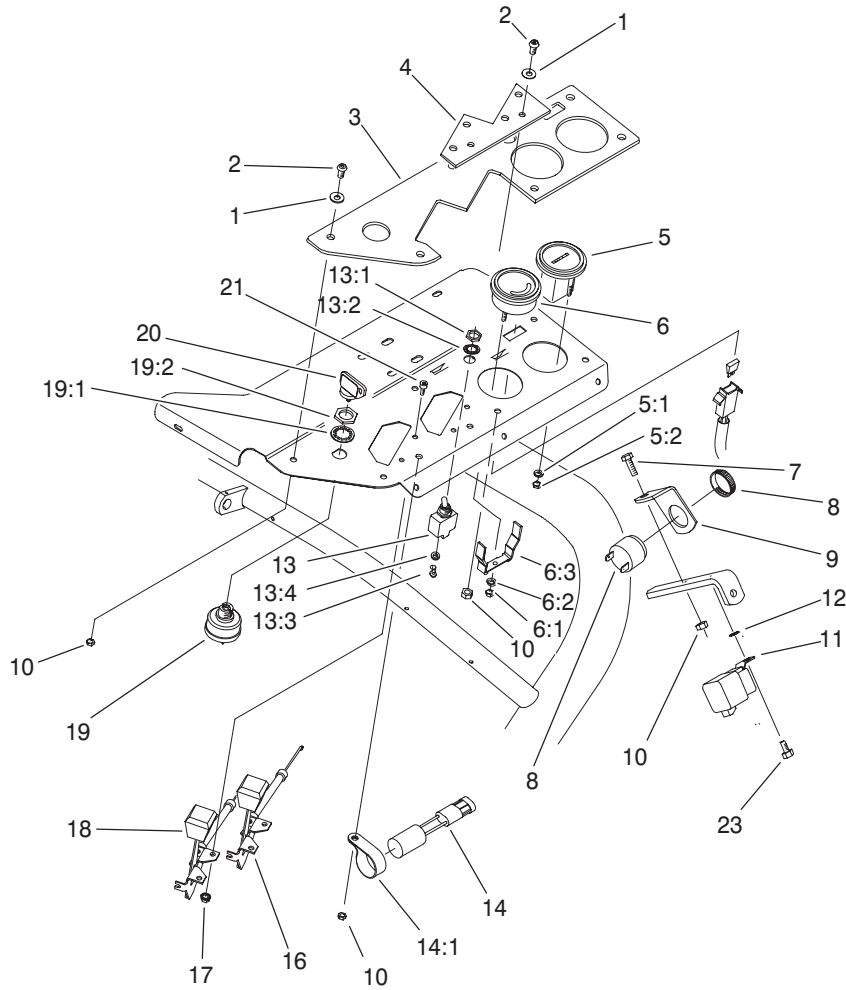
Note: Parts Not Listed
In Parts List Are Not
Serviced Separately.

Sheet No.: A6
T-3367

Hydraulic Cylinder Assembly No. 83-2330

Ref. No.	Part No.	Qty.	Description
1	3245-1	2	Screw-Set, HSH
2	83-2340	2	Cap - Threaded
5	83-2350	2	Cap - Head, Thread
9	83-2360	1	Rod ASM
12	83-2370	1	Barrel ASM
13	302-5	1	Fitting - Lube
14	83-2380	1	Kit-Repair, Seal

Ref. No.	Part No.	Qty.	Description



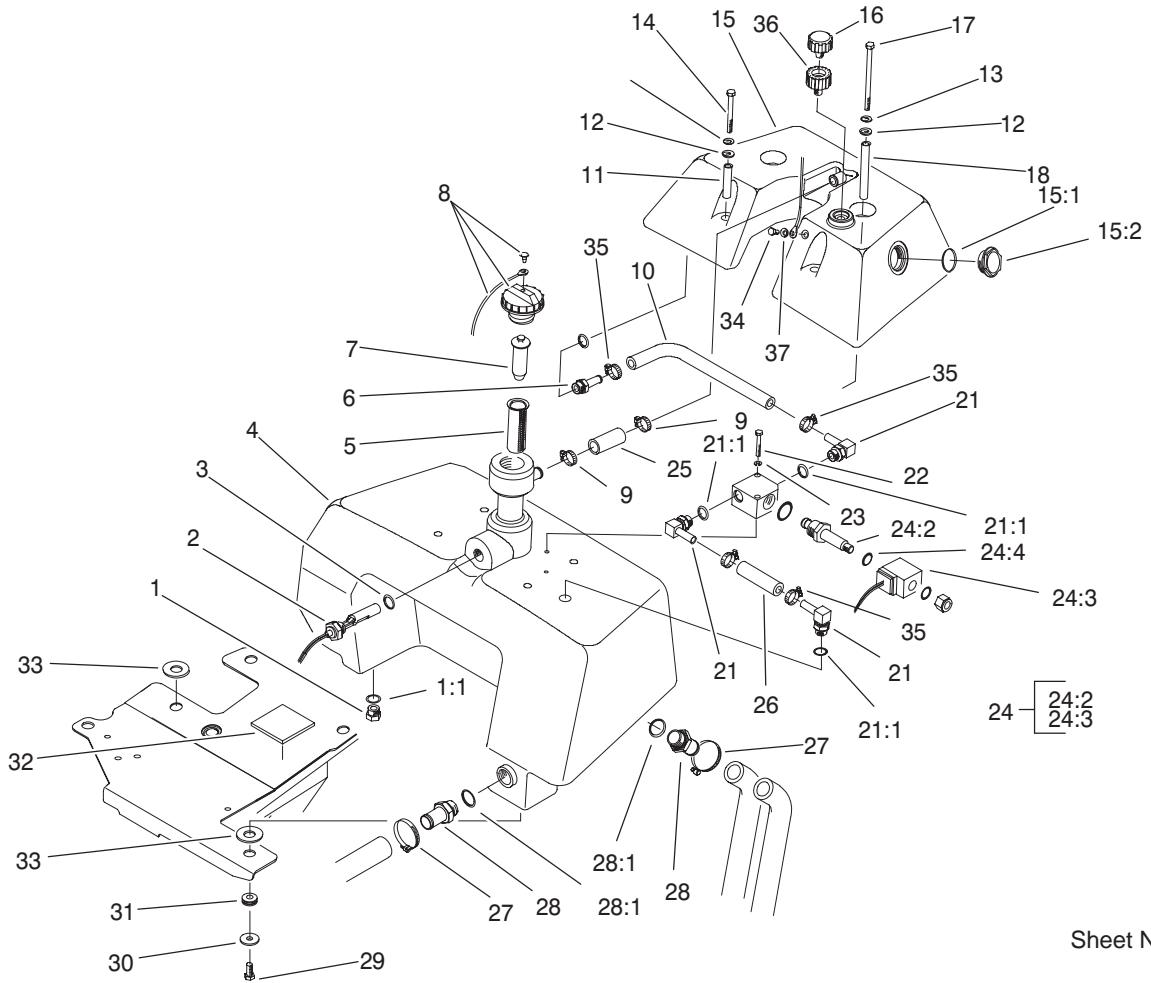
Sheet No.: 15
T-3369

Control Panel Assembly

Ref. No.	Part No.	Qty.	Description
1	3256-1	9	Washer-Flat
2	3274-69	8	Screw-HSBH
3	93-8061	1	Panel - Control
4	83-2030	1	Plate-Filler
5	66-2950	1	Gauge-Hourmeter
5:1	3255-20	2	Washer-Lock, Ext. Tooth
5:2	3217-25	2	Nut-Hex
6	98-2160	1	Voltmeter
6:1	3217-27	1	Nut-Hex
6:2	3255-25	1	Washer-Lock/Ext
6:3	78-0080	1	Clamp-Mounting
7	321-4	1	Screw-HH
8	80-9330	1	Alarm - Audio
9	83-1530	1	Bracket-Support, Buzzer
10	3296-16	9	Nut-Lock, NI
11	70-1480	1	Relay
12	3255-7	1	Washer-Lock/Ext
13	83-1660	1	Switch - 3 Position
13:1	218-498	2	Locknut-Hex
13:2	218-589	1	Washer
13:3	218-588	3	Screw
13:4	3253-19	3	Washer-Lock/Sp
14	83-2280	1	Timer - Delay
14:1	98-4604	1	Clamp-R

Ref. No.	Part No.	Qty.	Description
16	83-0040	1	Control - Choke
17	3296-27	4	Nut-Lock NI
18	83-0030	1	Control - Throttle
19	88-9830	1	Switch-Ignition
19:1	3254-5	1	Washer-Lock/Int
19:2	218-461	1	Nut-HH
20	63-8360	2	Key-Ignition
21	3273-26	4	Screw-HSH
*22	3290-379	1	Tie-Cable
23	32104-95	1	Screw-HWH

* Not illustrated



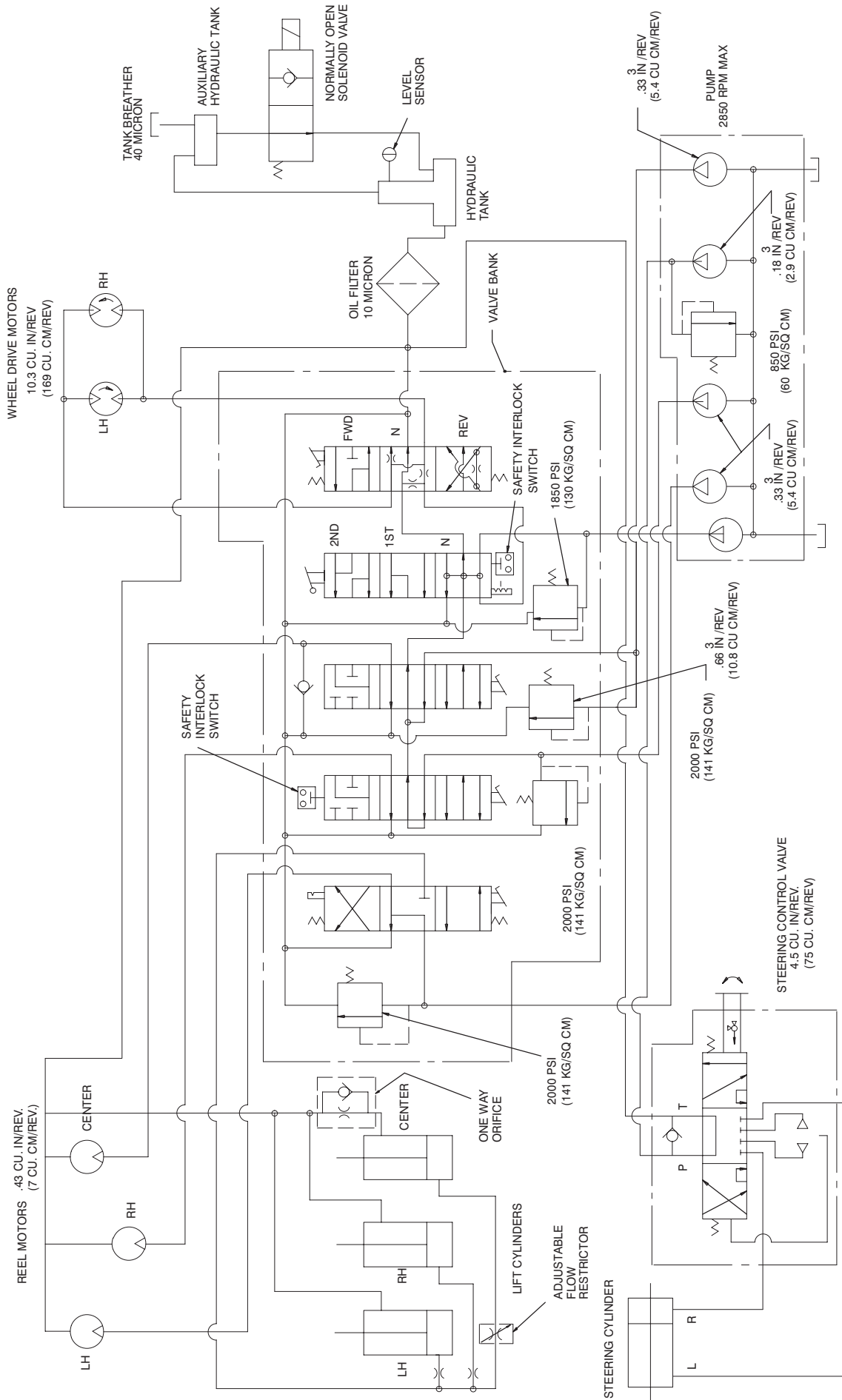
Sheet No.: 16
T-3371

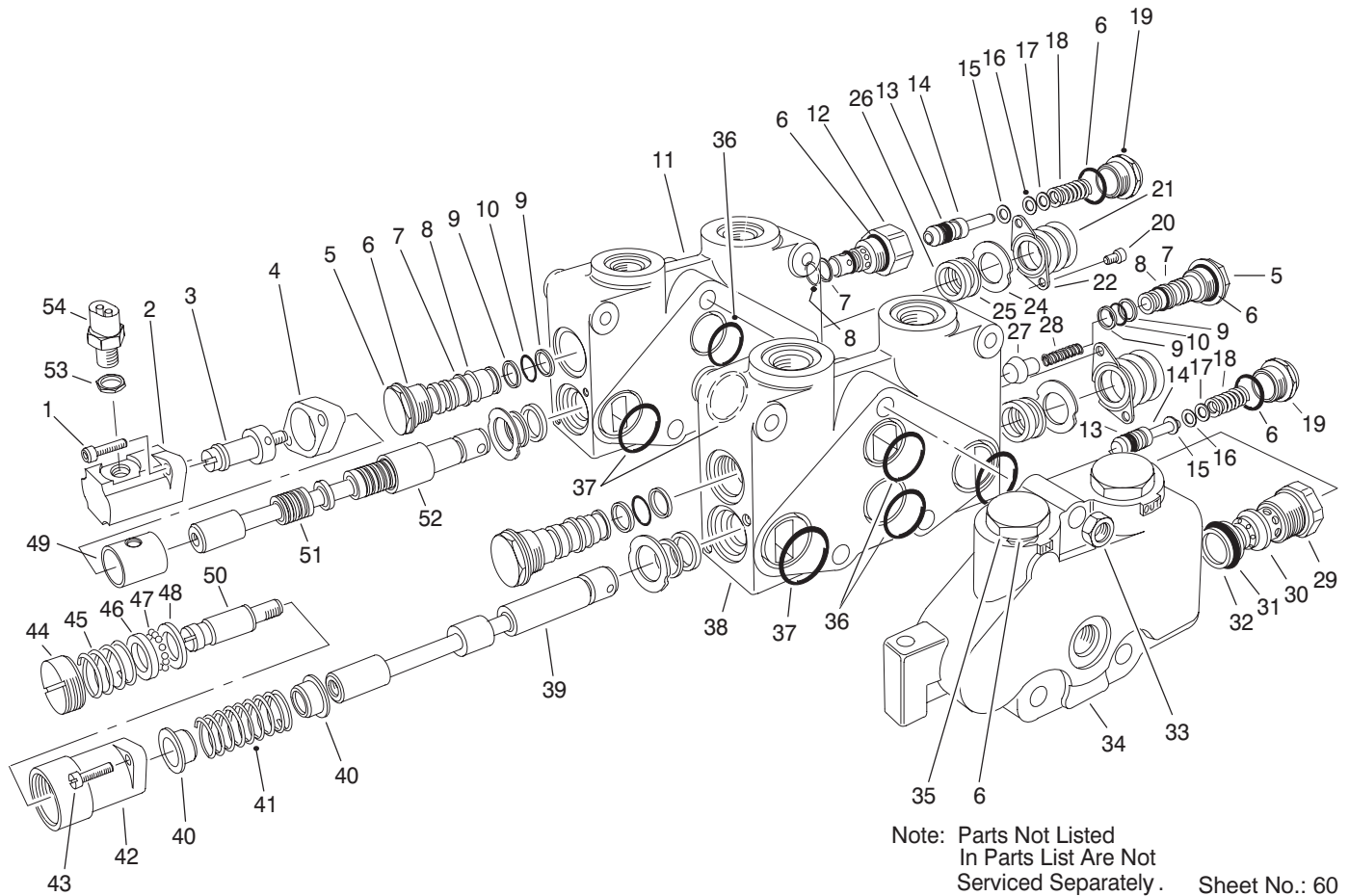
Hydraulic Reservoir Assembly

Ref. No.	Part No.	Qty.	Description
1	353-550	1	Plug-Hydraulic
1:1	237-79	1	O-Ring
2	83-1450	1	Sensor-Level, Oil
3	237-80	1	O-Ring
4	92-8966	1	Tank-Hydraulic
5	83-1520	1	Screen-Filler
6	354-121	1	Fitting-Hydraulic, Straight
7	92-4063	1	Plug-Cap, Filler
8	93-7160	1	Cap-Oil, Hydraulic
9	2412-141	2	Clamp-Drive, Worm
10	83-2070	1	Hose-Valve
11	83-1550	2	Spacer - Tube, Short
12	83-1470	4	Washer - Neoprene
13	3256-71	4	Washer-Flat
14	322-14	2	Screw-HH
15	83-2100	1	Tank-Auxiliary, Hydraulic
15:1	94-8166	1	O-Ring
15:2	83-2250	1	Gauge-Sight
16	68-6150	1	Breather-Air
17	322-29	2	Screw-HH
18	83-1560	2	Spacer - Tube, Long
21	354-120	3	Fitting-Hyd, 90°
21:1	237-79	2	O-Ring
22	321-11	2	Screw-HH

Ref. No.	Part No.	Qty.	Description
23	3253-3	2	Washer-Lock/Sp
24	83-1460	1	Solenoid Valve ASM
24:2	83-2000	1	Spool-Valve
24:3	83-2010	1	Coil - Valve
24:4	94-5438	1	Seal-Solenoid
25	83-2090	1	Hose-Overflow
26	83-2080	1	Hose-Valve, Tank
27	2412-34	3	Clamp-Hose
28	83-0870	3	Fitting-Barb, Hose
28:1	237-177	1	O-Ring
29	323-6	3	Screw-HH
30	63-8410	3	Washer
31	240-11	3	Grommet-Mount, Tank
32	83-2390	1	Pad - Tank
33	83-2400	2	Spacer/Washer-Tank
34	321-2	1	Screw-HH
35	2412-36	4	Clamp-Hose
36	92-8020	1	Adapter - Breather
37	3256-22	1	Washer-Flat

Hydraulic Schematic



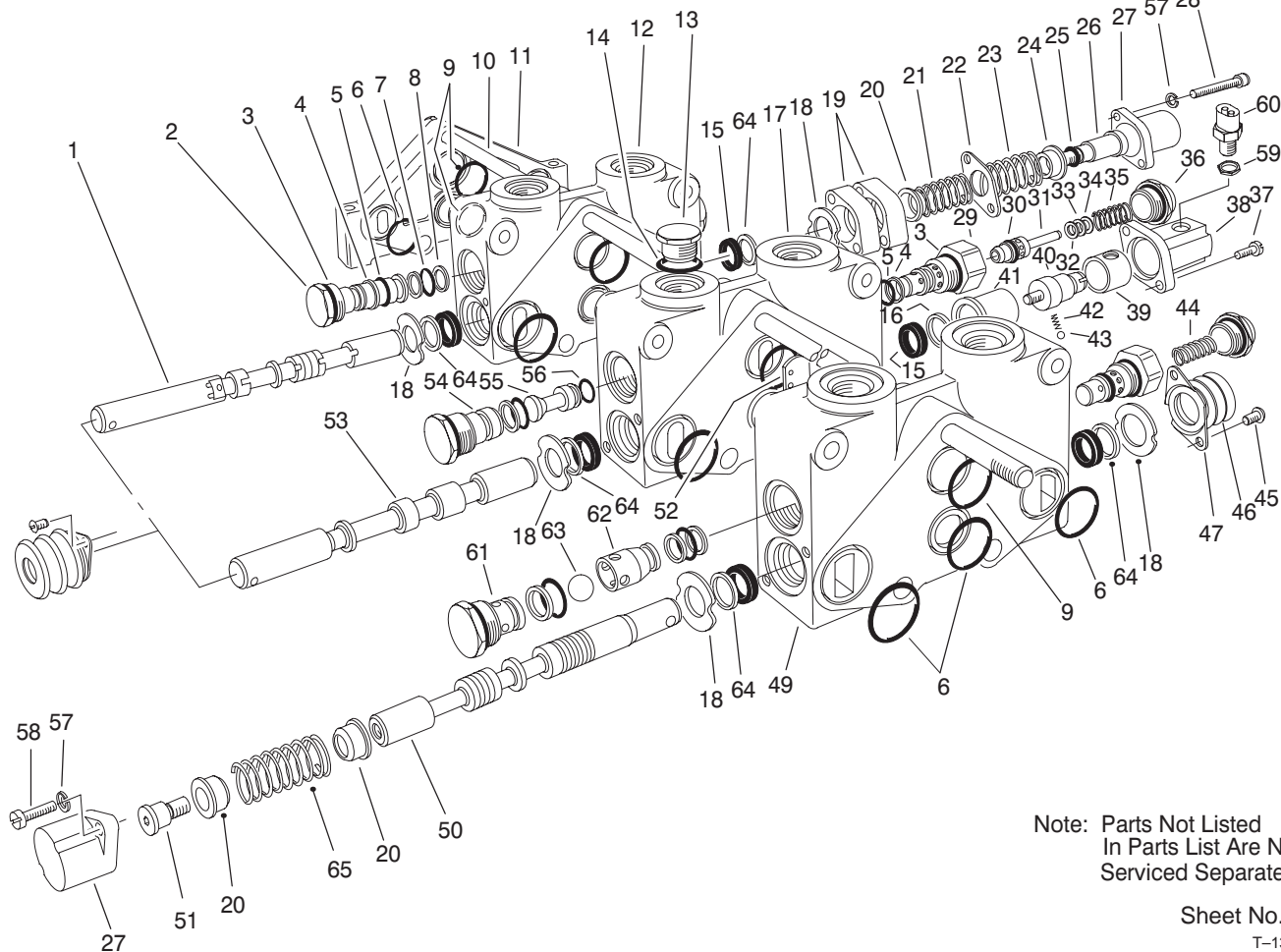


Note: Parts Not Listed
In Parts List Are Not
Serviced Separately. Sheet No.: 60
T-1318

Control Valve Assembly No. 84-2203 (Sections 1&2)

Ref. No.	Part No.	Qty.	Description
1	3274-70	2	Screw-HSH
2	353-727	1	Special Bonnet
3	353-729	1	Detent Stud
4	353-733	1	Bonnet Spacer
5	353-481	3	Lift Check ASM
6	237-54	8	O Ring
7	353-306	4	Backup Washer
8	353-305	4	O Ring
9	353-303	6	Backup Washer
10	353-302	3	O Ring
12	353-851	1	Relief Body
13	353-392	2	Piston Ring
14	353-531	2	Poppet & Ring ASM
15	353-328	2	.040 Shim
16	353-329	2	.020 Shim
17	353-330	2	.010 Shim
18	353-855	2	Spring
19	353-334	2	Relief Cap
20	3274-52	4	Screw-HSH
21	353-575	2	Boot
22	93-3651	2	Retainer - Boot
24	92-2547	4	Seal - Retainer
25	92-2546	4	Wiper - Seal
26	353-957	4	Seal Cup
27	353-301	1	Poppet Lift Check
28	353-304	1	Lift Check Spring

Ref. No.	Part No.	Qty.	Description
29	353-331	1	O Ring Seal
30	353-760	1	Body Relief
31	353-758	1	O-Ring Seal
32	353-952	1	Back-Up Seal
33	3217-7	3	Nut-Hex
34	353-772	1	Left Cover
35	353-721	2	Plug
40	353-417	2	Stop Collar
41	99-6850	1	Spring-Compression
42	99-8181	1	Bonnet-R Det
43	3274-15	2	Screw-HSH
44	353-763	1	Adj Cap
45	99-1475	1	Spring - Compression
46	42-2680	1	Ball Race
47	52-5880	12	Detent Ball
48	354-29	1	Trust Plate
49	353-728	1	Sleeve
50	353-762	1	Spud - Det Out
52	353-732	1	Detent Sleeve
53	38-0410	1	Hex Nut
54	83-1890	1	Switch-Ball
55	353-766	1	Relief Cart
56	99-8182	1	Sec 1-V20c Spl ASM
57	353-837	1	Section #2
58	99-8180	1	Positioner-R Det O/Asy

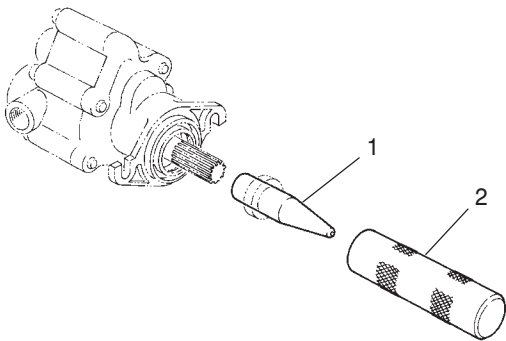


Control Valve Assembly No. 84-2203 (Sections 3 Thru 5)

Ref. No.	Part No.	Qty.	Description
1	94-5434	1	Spool
2	353-481	3	Lift Check ASM
3	237-54	6	O Ring
4	353-306	5	Backup Washer
5	353-305	5	O Ring
7	353-302	3	O Ring
8	353-303	6	Backup Washer
10	353-853	3	Bolt
11	353-668	1	Cover Plate
13	353-550	1	Plug-Hydraulic
13:1	237-79	1	O-Ring
14	353-848	1	O-Ring
15	353-957	6	Seal Cup
16	353-958	1	Washer
18	92-2547	5	Seal - Retainer
19	353-733	2	Bonnet Spacer
20	353-417	3	Stop Collar
21	353-831	1	Spring
22	353-529	1	Plate - Seal Retainer
23	92-3148	1	Spring - Traction
24	353-808	1	Spring Collar
25	353-830	1	O-Ring Seal
26	94-4248	1	Spool Collar
27	99-6895	2	Bonnet
28	354-28	2	Hex Socket Screw
29	353-851	2	Relief Body

Ref. No.	Part No.	Qty.	Description
30	353-392	2	Piston Ring
31	353-531	2	Poppet & Ring ASM
32	353-328	2	.040 Shim
33	353-329	2	.020 Shim
34	353-330	2	.010 Shim
35	353-398	1	Spring
36	353-334	2	Relief Cap
37	52-5900	4	Screw
38	353-847	1	Bonnet
39	353-849	1	Sleeve
40	353-846	1	Spud
41	353-845	1	Detent Sleeve
42	353-730	1	Spring
43	353-731	1	1/4 Dia Ball
44	353-855	1	Spring
45	3274-52	6	Screw-HSH
46	353-575	3	Boot
47	93-3651	3	Retainer - Boot
51	52-5860	1	Spool Collar
52	354-122	1	Spool #4
54	353-953	1	Plug ASM
55	353-844	1	Plug
56	353-850	1	O-Ring Seal
57	3253-3	4	Washer-Lock/Sp
58	3274-84	4	Screw-HSH
59	38-0410	1	Hex Nut

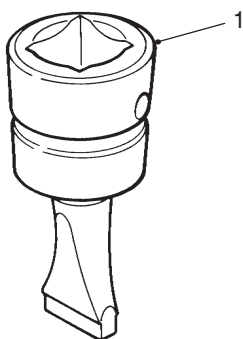
SPECIAL TOOLS REEL MOTOR SEAL INSTALLATION TOOLS



T-0727

Ref. No.	Part No.	Description	No. Used
1	TOR491430	Protector – Seal	1
2	TOR491450	Installer – Seal	1

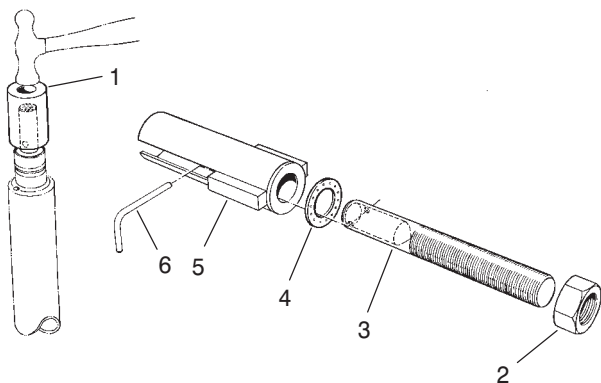
BED KNIFE SCREW TOOL NO. TOR510880



T-0729

Ref. No.	Part No.	Description	No. Used
1		Tool – Bed Knife Screw	1

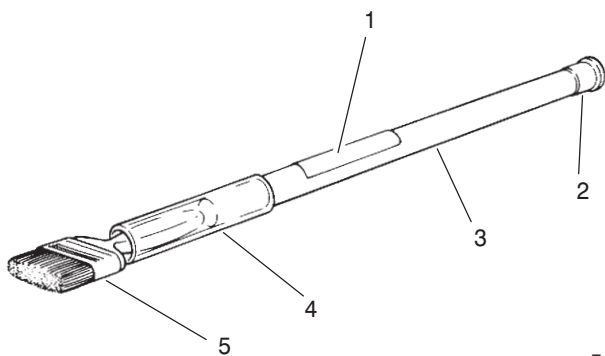
BEARING REPLACEMENT TOOL KIT NO. TOR238900



T-0730

Ref. No.	Part No.	Description	No. Used
1	23-8880	Driver – Bearing	2
2	3219-18	Nut – Hex.	1
3	23-8840	Puller – Bolt	1
4	22-6090	Washer – Thrust	1
5	23-8850	Tube – Support	1
6	23-8860	Pin – Bearing Rplcmnt.	1

BACKLAPPING BRUSH ASSEMBLY NO. 29-9100

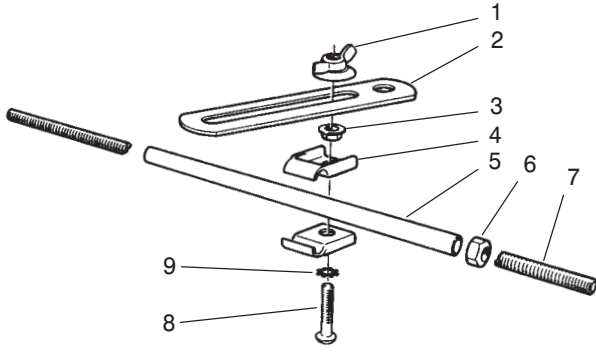


T-0731

Ref. No.	Part No.	Description	No. Used
1	12-9140	Decal	1
2	2410-18	Plug	1
3	29-9080	Handle	1
4	29-9090	Hose – Handle	1
5	36-4310	Brush	1

Note: Special tools may be ordered from: Owatonna Tool Company 2013 4th St. NW Owatonna, MN 55060

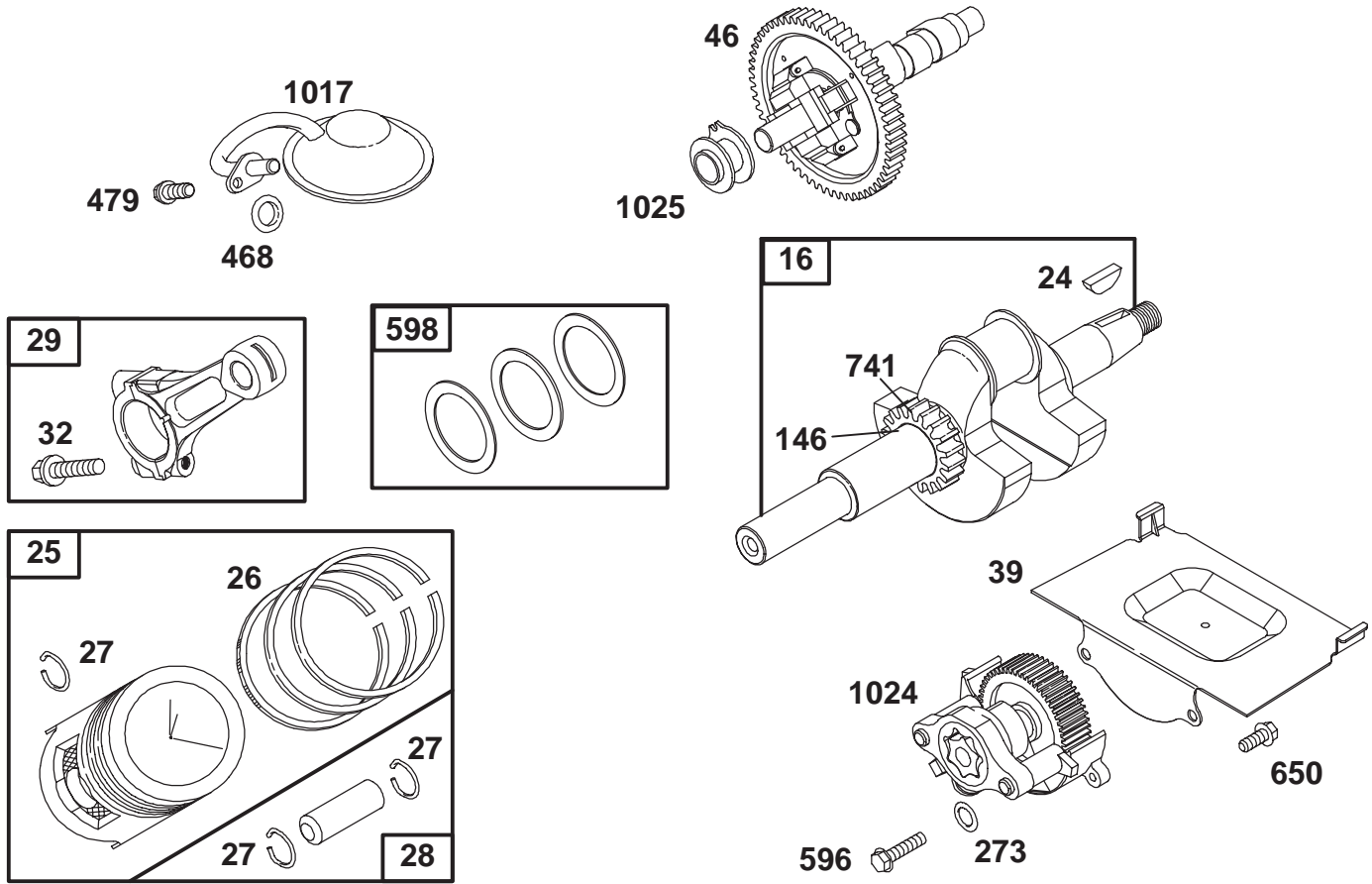
SPECIAL TOOLS (Continued) ALIGNMENT TOOL NO. TOR200120



T-0732

Ref. No.	Part No.	Description	No. Used
1	3-4808	Nut - Wing	1
2	20-0110	Bracket - Alignment	1
3	32128-20	Nut - Lock, Flange	1
4	3-6657	Clip - Skid	2
5	20-0070	Tube	1
6	3219-2	Nut - Hex.	1
7	20-0080	Rod	1
8	32122-35	Screw - Truss Head	1
9	3255-8	Washer - Lock, Int. Tooth	1

**Note: Special tools may be ordered from: Owatonna Tool Company
2013 4th St. NW
Owatonna, MN 55060**



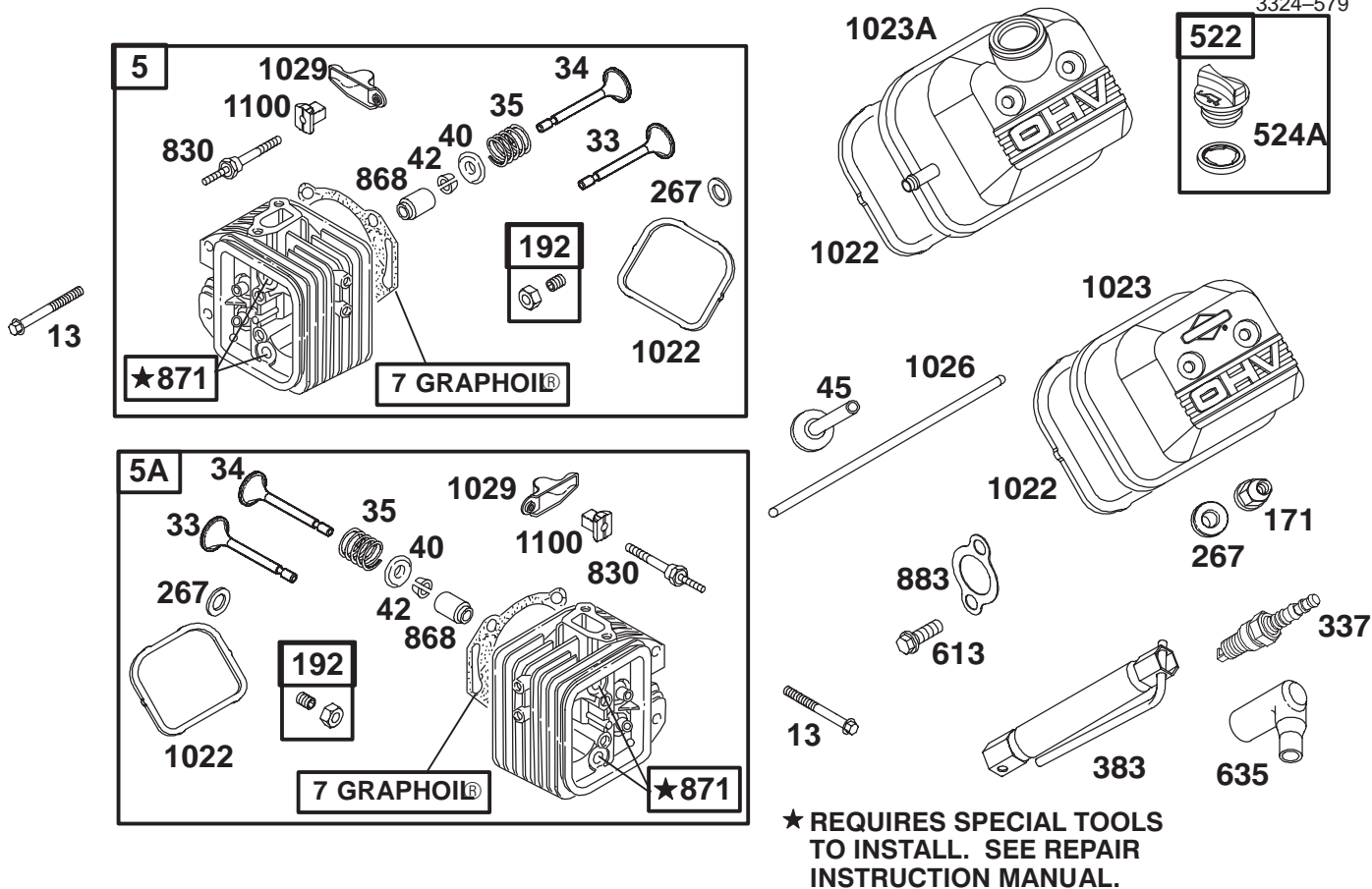
Assemblies include all parts shown in frames.

Engine – Briggs and Stratton Model 303447-1408-E1

Ref. No.	Part No.	Qty.	Description
16	692161	1	Crankshaft
24	806066	1	Flywheel Key
25	807619	1	Piston Assembly (Standard)
	807807	1	Piston Assembly (.010 O.S.)
	807809	1	Piston Assembly (.020 O.S.)
	807811	1	Piston Assembly (.030 O.S.)
26	807620	1	Piston Ring Set (Standard)
	807808	1	Piston Ring Set (.010 O.S.)
	807810	1	Piston Ring Set (.020 O.S.)
	807812	1	Piston Ring Set (.030 O.S.)
27	690683	1	Piston Pin Lock
28	807621	1	Piston Pin Assembly
29	807900	1	Connecting Rod (Standard)
	807809	1	Connecting Rod (.020 U.S.)
32	690698	1	Screw (Connecting Rod)

Ref. No.	Part No.	Qty.	Description
39	690745	1	Oil Deflector
46	691557	1	Camshaft
146	94196	1	Timing Key
*273	690681	1	O-Ring Seal (Oil Pump)
*468	690690	1	O-Ring Seal (Oil Pump Screen)
479	692537	1	Screw
596	691492	1	Screw
598	807625	1	End Play Shim
650	692539	1	Screw
741	805984	1	Timing Gear
1017	690900	1	Oil Pump Screen
1024	693185	1	Oil Pump
1025	690689	1	Governor Slider

* Included in Gasket Set – Part No. 808390.



Assemblies include all parts shown in frames.

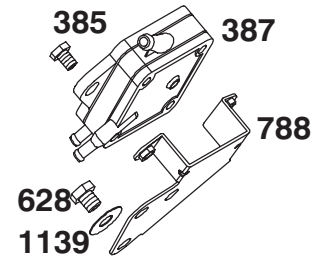
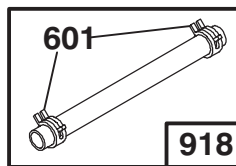
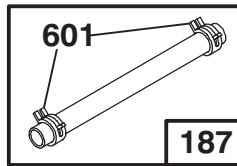
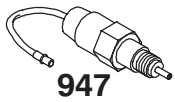
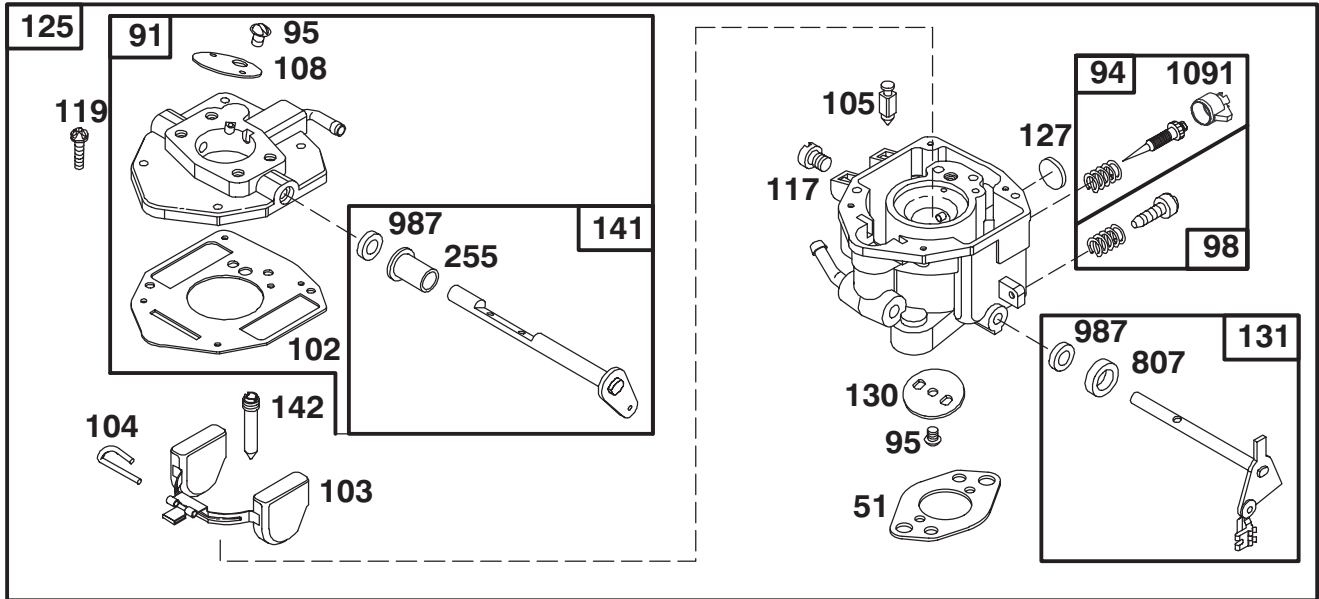
Engine – Briggs and Stratton Model 303447-1408-E1

Ref. No.	Part No.	Qty.	Description
5	808381	1	Cylinder (Cyl. #1) Head
5A	808382	1	Cylinder (Cyl. #2) Head
*‡7	806085	1	Cylinder Head Gasket
13	805097	1	Cylinder Head Screw
33	807681	1	Exhaust Valve
34	807680	1	Intake Valve
35	805937	1	Valve Spring
40	805092	1	Valve Spring Retainer
42	807683	1	Valve Retainer
45	262679	1	Valve Tappet
‡171	805019	1	Nut (Air Cleaner)
192	807623	1	Screw
*‡276	805420	1	Sealing Washer
337	491055	1	Spark Plug
*‡338	691312	1	Dipstick Gasket
383	19374	1	Spark Plug Wrench
522	491832	1	Dipstick/Fill Plug
613	805158	1	Screw
635	805529	1	Spark Plug Elbow
830	691544	1	Rocker Arm Stud
868	805094	1	Valve Guide Seal
871	805084	1	Valve Guide
*‡883	805024	1	Exhaust Gasket
*‡1022	806039	1	Rocker Cover Gasket
1023	691494	1	Valve Cover
1023A	690910	1	Valve Cover

Ref. No.	Part No.	Qty.	Description
1026	805352	1	Push Rod (Intake Valve) Note: 805617 Push Rod (Exhaust Valve)
1029	691543	1	Rocker Arm
1100	690973	1	Rocker Arm Pivot

* Included in Gasket Set – Part No. 808390.

‡ Included in Valve Overhaul Kit – Part No. 808392



Assemblies include all parts shown in frames.

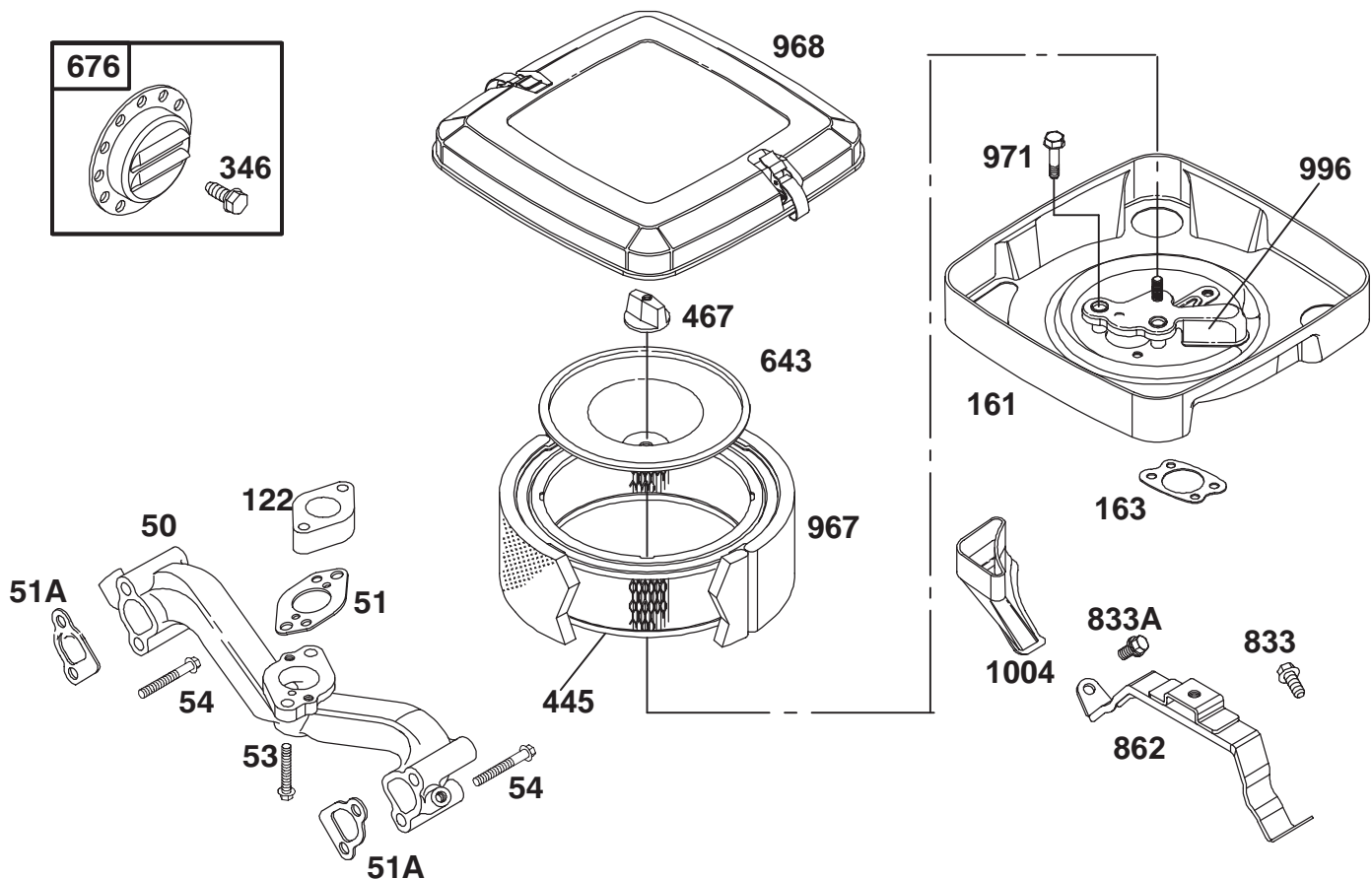
Engine – Briggs and Stratton Model 303447-1408-E1

Ref. No.	Part No.	Qty.	Description
*51	805700	1	Carburetor Mtg. Gasket
91	807919	1	Upper Carburetor Body
‡94	808257	1	Idle Mixture Kit
95	805538	1	Screw
98	808177	1	Screw
‡102	805541	1	Carburetor Body Gasket
103	805546	1	Float Assembly
‡104	805545	1	Float Hinge Pin
‡105	805547	1	Float Needle Valve
108	805539	1	Choke Valve
117	805852	1	Main Jet
	805537	1	Main Jet (High Altitude)
119	805540	1	Screw
125	808251	1	Carburetor Assembly
‡127	690727	1	Welch Plug
130	805554	1	Throttle Valve
131	807720	1	Throttle Shaft
141	807722	1	Choke Shaft
‡142	690725	1	Carburetor Nozzle
187	691049	1	Fuel Line (Cut to Required Length)
‡255	690721	1	Choke Shaft Bushing
385	806361	1	Screw

Ref. No.	Part No.	Qty.	Description
387	692313	1	Fuel Pump
601	93807	1	Hose Clamp
628	805247	1	Screw
‡633	690722	1	Choke Shaft Seal
788	691559	1	Fuel Pump Bracket
‡807	805557	1	Throttle Spacer
918	296004	1	Vacuum Line (Cut to Required Length)
947	807664	1	Solenoid
‡1091	691516	1	Limiter Cap
1139	806479	1	Screw

* Included in Gasket Set – Part No. 808390.

‡ Included in Valve Overhaul Kit – Part No. 808392



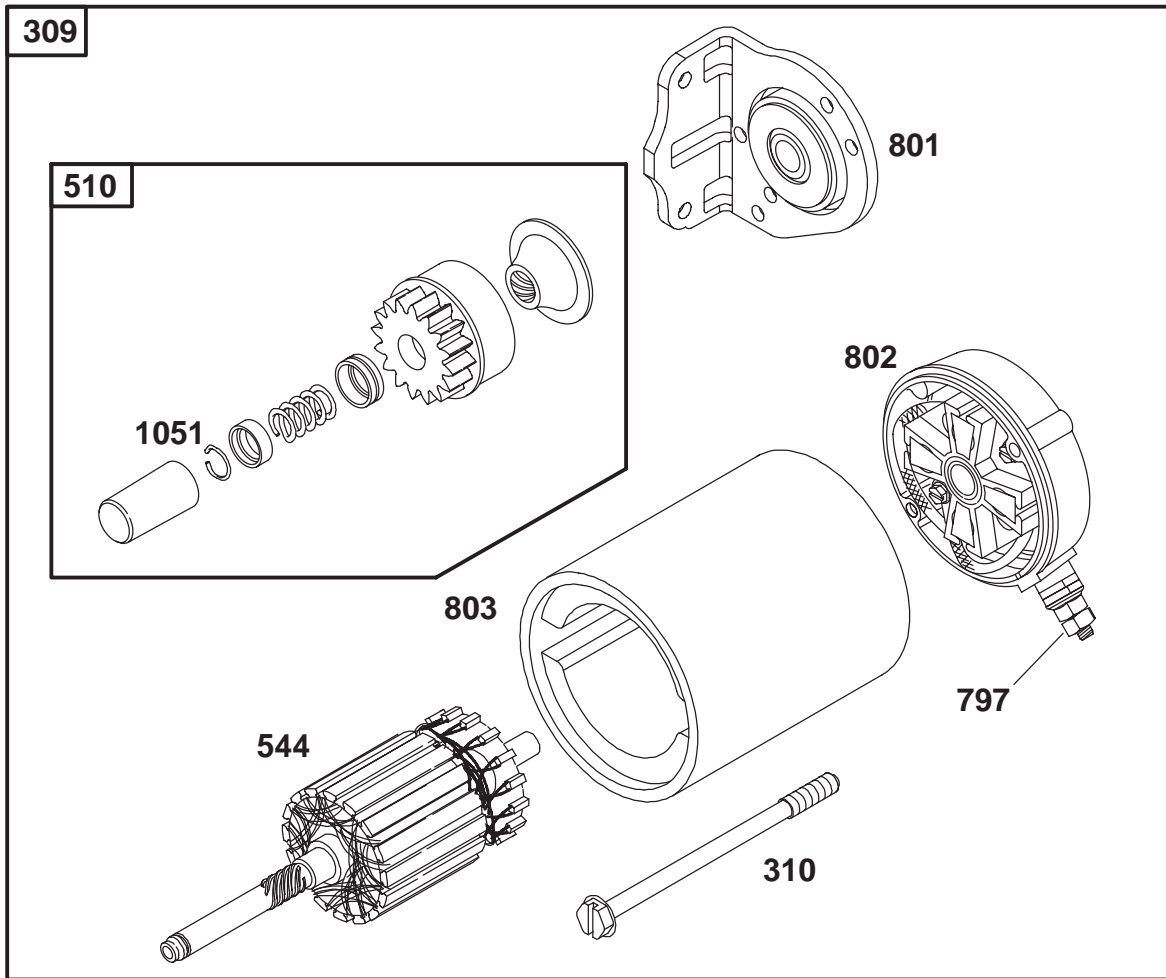
Engine – Briggs and Stratton Model 303447-1408-E1

Ref. No.	Part No.	Qty.	Description
50	690754	1	Intake Manifold
*51	805700	1	Intake Gasket
51A	805023	1	Intake Gasket
*‡52	805023	1	Intake Manifold Gasket
53	805466	1	Screw
54	690676	1	Screw
122	690691	1	Carburetor Spacer
161	691561	1	Air Cleaner Base
*163	805655	1	Air Cleaner Gasket
305	805406	1	Screw (M6 x 12 mm)
346	94896	1	Screw
445	394018	1	Air Filter
467	491875	1	Air Cleaner Knob
643	805631	1	Air Cleaner Plate
676	397630	1	Muffler Deflector
833	690872	1	Screw (M6 x 16 mm)
833A	690872	1	Screw (Air Cleaner Mounting Strap)
862	692153	1	Air Cleaner Bracket
967	272490	1	Air Filter
968	807862	1	Air Cleaner Cover
971	692537	1	Screw
996	691577	1	Carburetor Shield

Ref. No.	Part No.	Qty.	Description
1004	690743	1	Cleaner Mounting Strap

* Included in Gasket Set – Part No. 808390.

‡ Included in Valve Overhaul Kit – Part No. 808392.



Engine – Briggs and Stratton Model 303447-1408-E1

Ref. No.	Part No.	Qty.	Description
188	805247	1	Screw
309	691564	1	Starter Motor
310	496813	1	Bolt
510	496881	1	Starter Drive
544	690855	1	Starter Armature
797	691029	1	Nut
801	808778	1	Drive Cap
802	496813	1	End Cap
			Note: Includes 496887
			Brush Set
803	690854	1	Starter Housing
1051	691124	1	Lock Ring

Ref. No.	Part No.	Qty.	Description

