



27" Verticutting Reel

for Reelmaster® 3100D

Model No. 03216—90001 and Up

Parts Catalog

Ordering Replacement Parts

To order replacement parts, please supply: the part number, the quantity, and the description of each part desired.

Understanding Reference Numbers

Each identified part in an illustration has a reference number. The reference number for a part also appears in the parts list, along with other information about the part.

This catalog uses two special reference number formats, one to indicate parts in a service assembly and another to indicate the quantity of a given part in an illustration.

Service Assembly Reference Numbers

Parts in service assemblies have reference numbers in the form **a:b**. The **a** represents the reference number of the entire service assembly and the **b** represents a sequential number unique to each part within the service assembly.

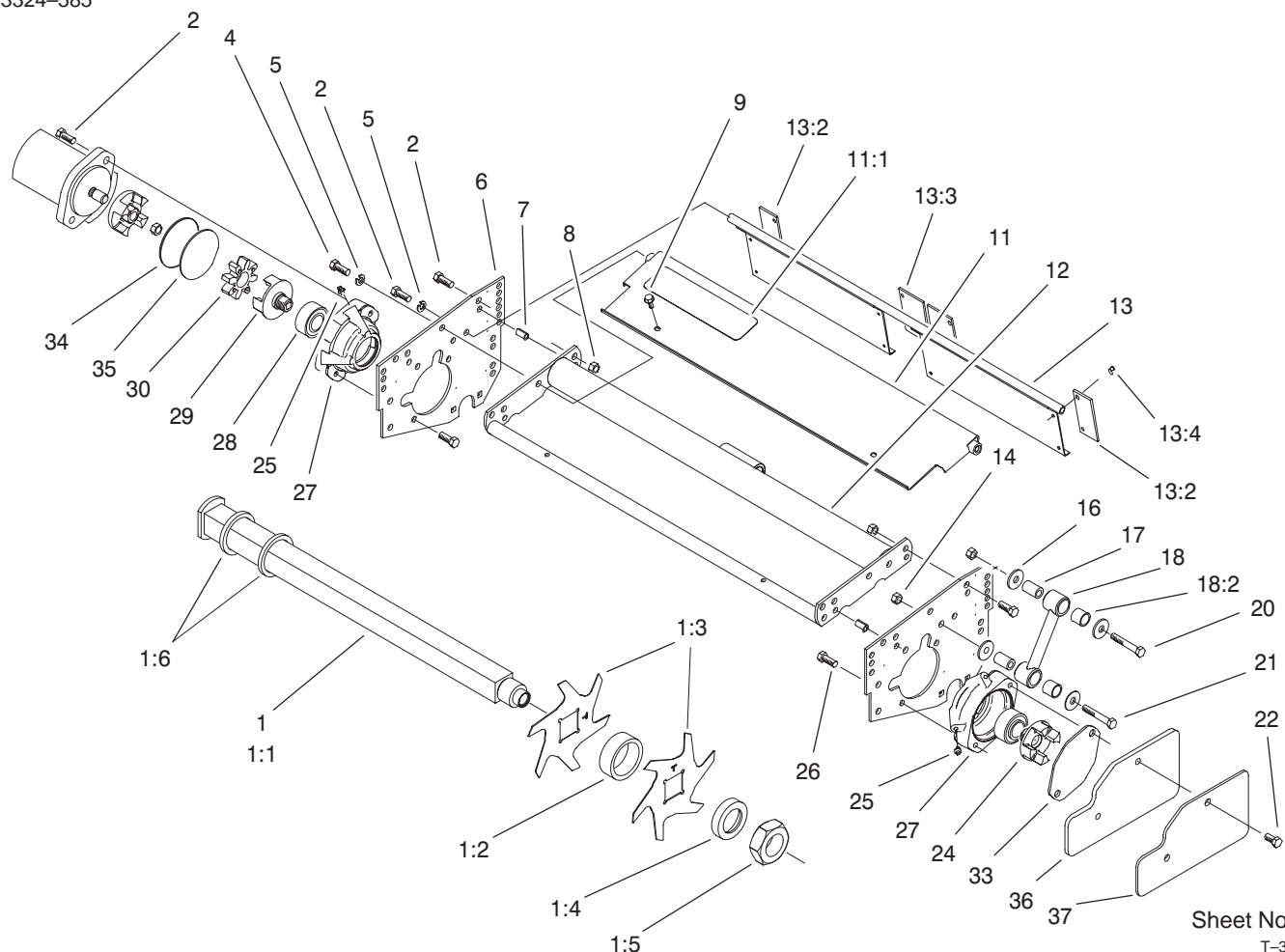
For example, a wheel assembly might be identified by reference number **6**, the tire by **6:1**, the valve by **6:2**, and the wheel by **6:3**. When you order the assembly identified by reference number **6**, you receive all parts identified by reference numbers **6:1**, **6:2**, and **6:3**. However, you may also order any part individually.

Reference numbers of this type appear in illustrations and in part lists.

Reference Numbers Indicating Quantity

In an illustration, if a reference number indicates more than one part, the reference number has the form **nX y**. The **n** represents the quantity of the part, the **X** is the multiplication symbol, and the **y** represents the reference number.

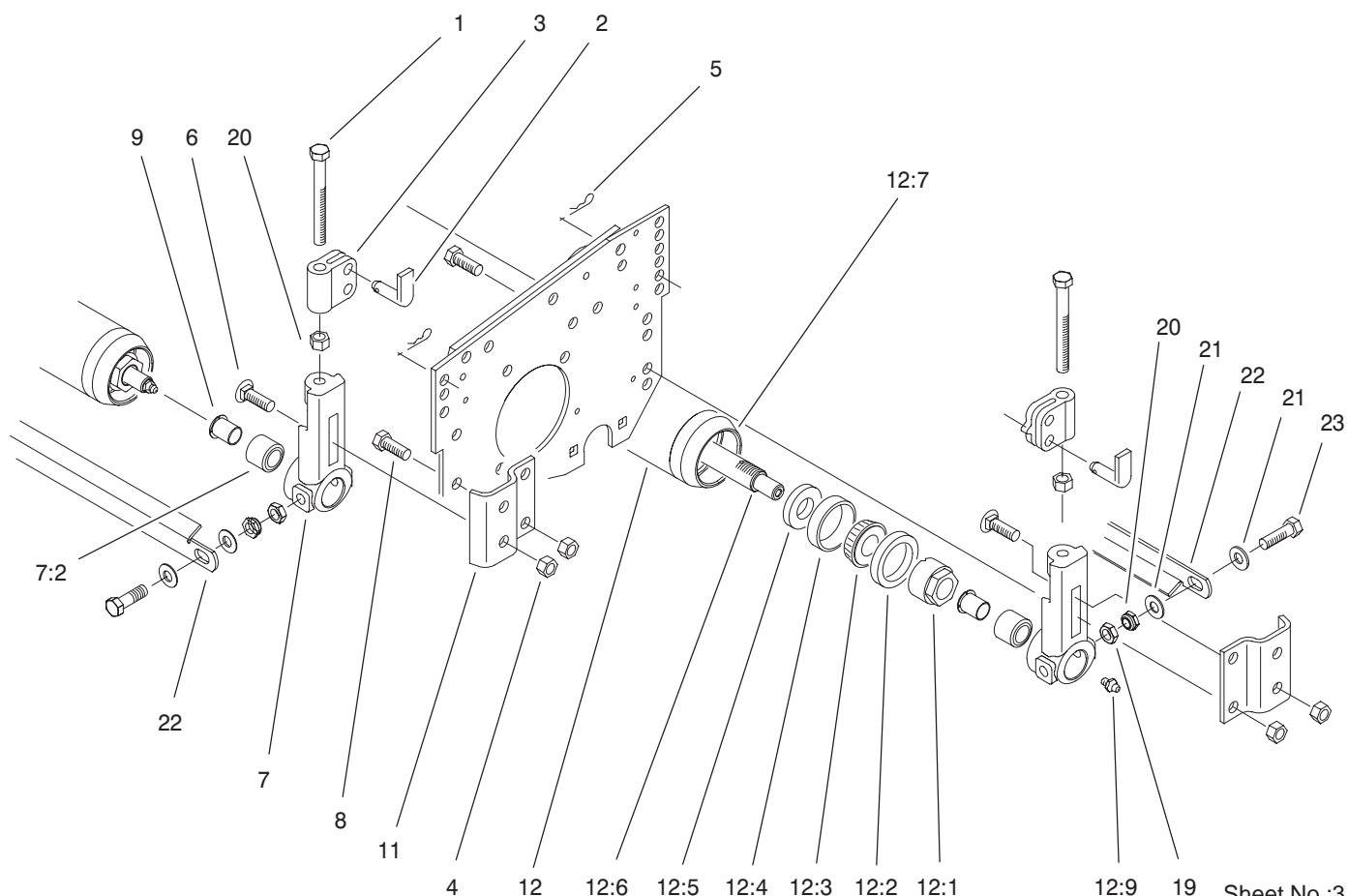
For example, in an illustration, the reference number **2X 37** means that two of the parts identified by reference number **37** are indicated.



Reel Assembly

Ref. No.	Part No.	Qty.	Description
1	99-3632	1	Verticutting Shaft ASM
1:1	99-3633	1	Shaft-Verticutting
1:2	93-3092	24	Spacer-.94
1:3	93-3038-03	25	Blade-Dethatcher
1:4	93-3091	1	Spacer-.25
1:5	3218-17	1	Nut-Jam
1:6	94-2720	2	Spacer-.27
2	323-6	10	Screw-HH
4	323-7	2	Screw-HH
5	3253-5	4	Washer-Lock/Sp
6	94-3695-01	2	Plate-Side Reel, RH
7	32121-36	4	Pin-Spring
8	3296-39	6	Nut-Lock, NI
9	32144-10	2	Screw-HWH
11	94-3621	1	Guard-Grass
11:1	93-8064	1	Decal-Danger
12	95-8753-01	1	Reel Frame ASM
13	93-8849	1	Grass Guard ASM
13:2	61-3280	2	Cover-Rubber
13:3	61-3290	2	Cover-Rubber, Mid
13:4	700382	12	Rivet
14	32128-36	8	Nut-HF
16	93-8806	16	Washer-Hardened
17	93-6981	8	Spacer
18	16-9759	4	Link And Bushing ASM
18:2	94-8945	8	Bushing

Ref. No.	Part No.	Qty.	Description
20	323-11	4	Screw-HH
21	323-10	4	Screw-HH
22	323-8	2	Screw-HH
24	93-8826	1	Coupler-Reel, LH Thread
25	302-5	4	Fitting-Lube
26	3234-1	4	Screw-HHF
27	99-3404	2	Housing-Bearing
28	100-4926	2	Bearing-Aligning, Self
29	93-8825	1	Coupler-Reel, RH Thread
30	93-8827	1	Spider-Coupler
33	94-5979	1	Gasket
34	353-949	1	O-Ring
35	94-2703	1	Plug
36	94-3699-01	3	Weight-3.5 Lbs
37	99-3442-01	1	Weight-2.0 Lbs



Sheet No.:3

T-3322

Roller Assembly

Ref. No.	Part No.	Qty.	Description
1	323-57	4	Screw-HH
2	71-3690	4	Spade-Bent
3	61-0420-01	4	Support-HOC
4	3296-39	16	Nut-Lock, NI
5	3290-467	4	Pin-Hair
6	3231-25	4	Screw-CARR
7	14-4489	4	Front HOC
			Bracket ASM
7:2	56-9510	4	Bushing ASM
8	323-6	8	Screw-HH
9	56-9520	2	Bushing-Flanged
11	61-0910	4	Bracket-Angle
12	61-0410	2	Full Roller ASM
12:1	71-3590	2	Nut-Adjustment
12:2	253-153	2	Seal-Oil
12:3	254-78	2	Cone-Bearing
12:4	254-79	2	Bearing-Roller, Cup
12:5	253-152	2	Seal-Oil
12:6	61-0400	1	Shaft-Roller
12:7	12-4989-01	1	End Cap & Tube ASM
12:9	302-5	2	Fitting-Lube
19	3218-3	4	Nut-Jam
20	3296-59	8	Nut-Lock, NI
21	3256-24	8	Washer-Flat
22	61-0590	2	Roller-Scraper
23	323-7	4	Screw-HH

