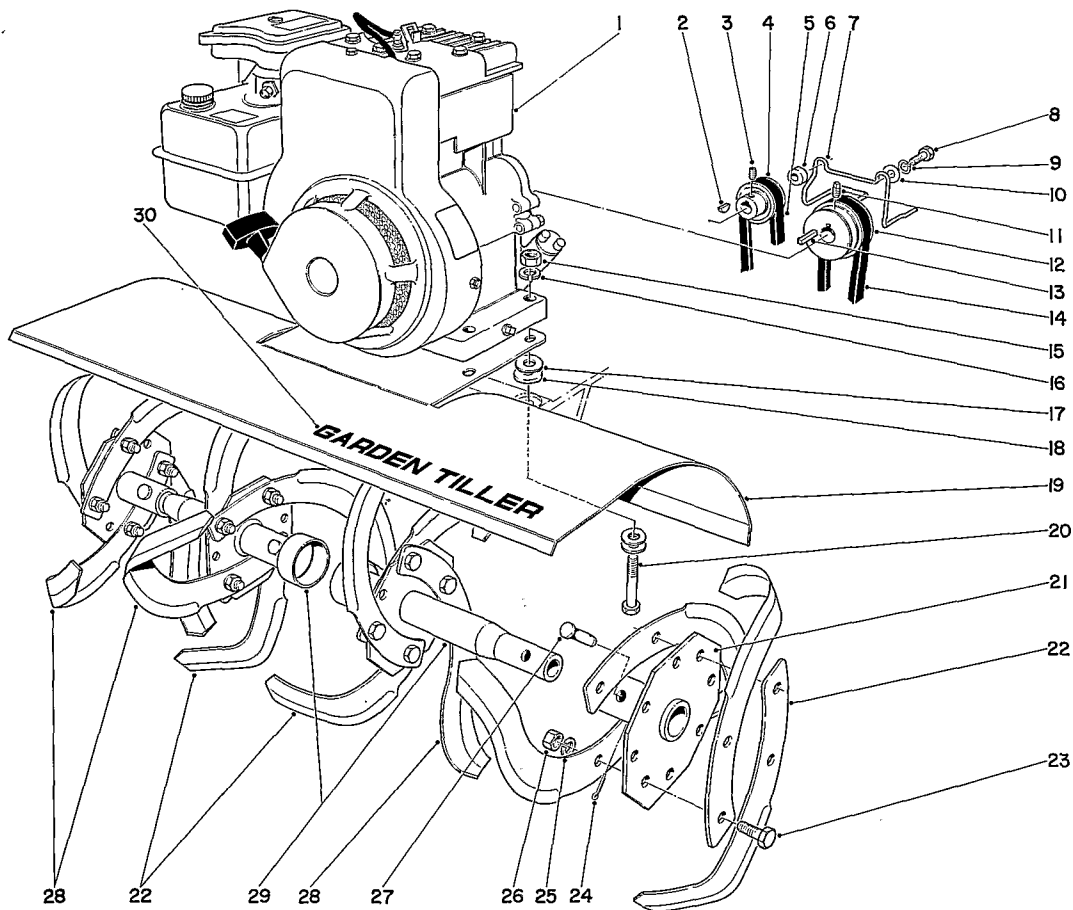


TORO®

1972
MODEL NO. 58210-200001 & UP

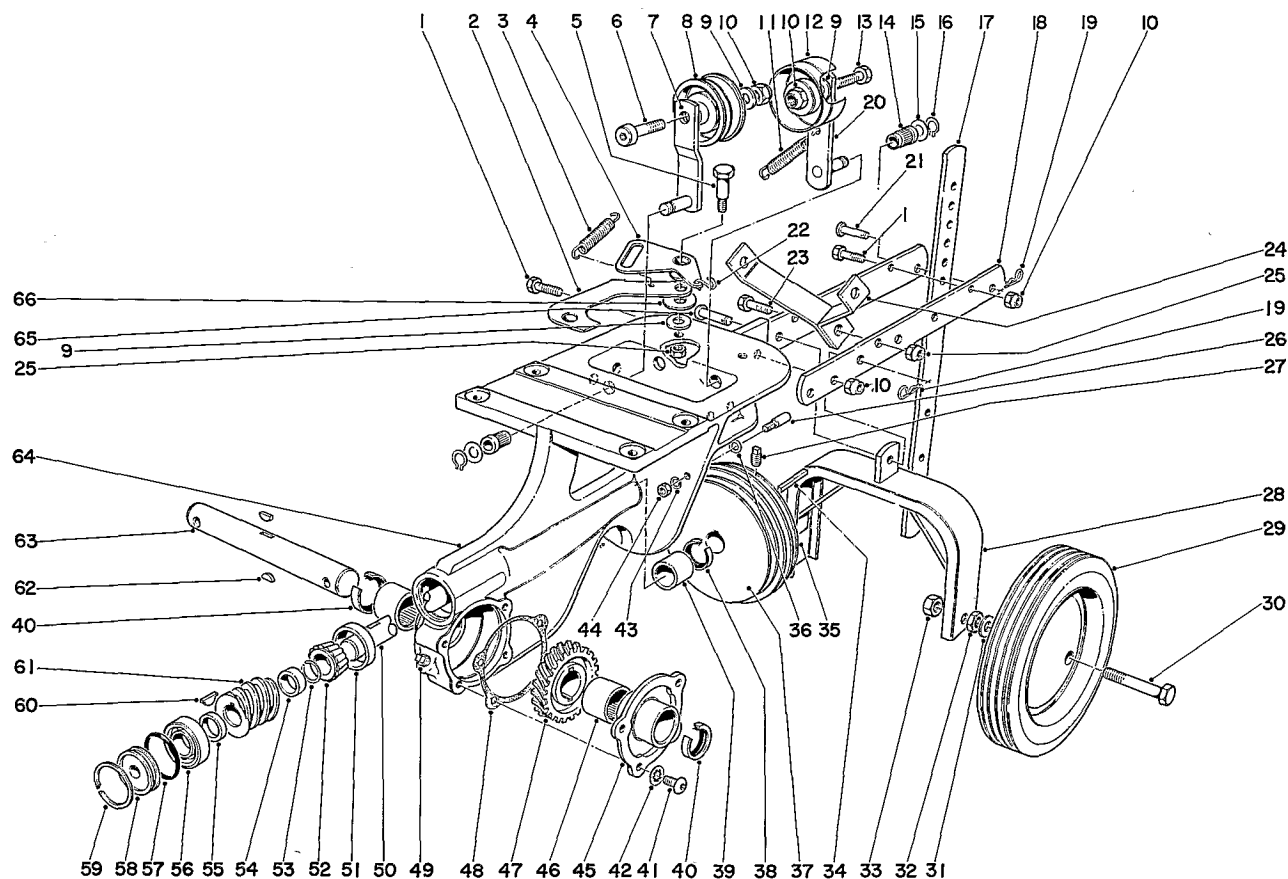
PARTS CATALOG

5 H.P. TILLER



TINE AND ENGINE ASSEMBLY

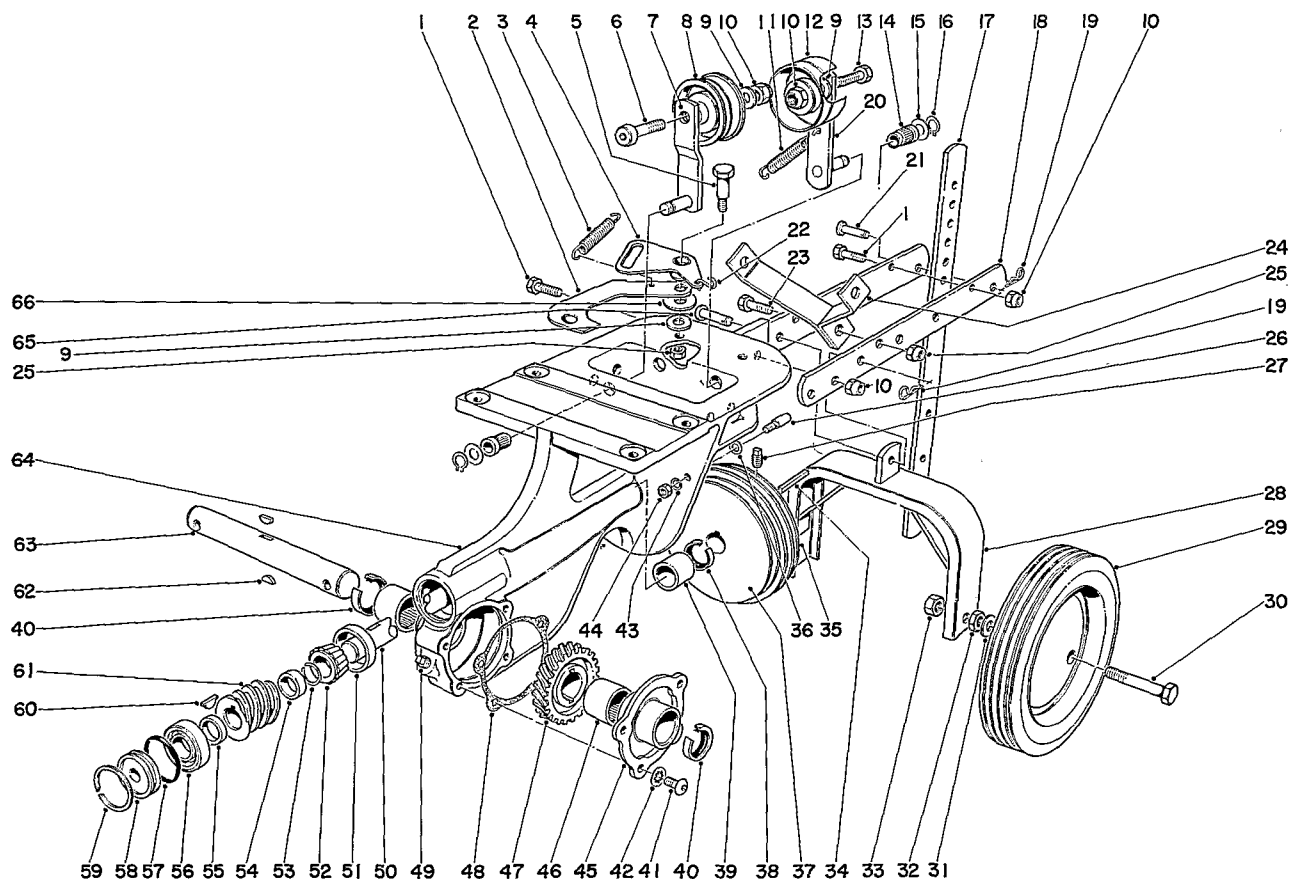
Ref. No.	Part No.	Description	No. Used	Ref. No.	Part No.	Description	No. Used
1	221-408	Engine	1	16	3253-4	Lockwasher	4
2	3257-24	Woodruff Key	1	17	3256-3	Washer	12
3	3245-7	Set Screw	1	18	7-0081	Special Washer	4
4	7-0071	Pulley	1	19	7-0072	Plant Shield	1
5	7-0074	Belt	1	20	322-11	Capscrew	4
6	2-0780	Spacer	2	21	7-0105	Axle Hub	2
7	7-9350	Belt Guide	1	22	7-0103	Tine, R. H.	8
8	321-11	Capscrew	2	23	323-6	Capscrew	16
9	3253-3	Lockwasher	2	24	3272-7	Cotter Pin	4
10	3256-2	Washer	2	25	3253-21	Lockwasher	16
11	3246-2	Set Screw	1	26	3217-7	Nut	16
12	7-0070	Engine Pulley	1	27	283-15	Tine Pin	4
13	7-0036	Key	1	28	7-0102	Tine, L. H.	8
14	7-0073	Belt	1	29	7-0104	Axle Hub	2
15	3217-6	Nut	4	30	7-9400	Decal	1



CHASSIS ASSEMBLY

Ref. No.	Part No.	Description	No. Used
1	323-8	Capscrew	3
2	7-0028	Reverse Link	1
3	7-1322	Spring	1
4	7-0027	Bell Crank	1
5	7-0030	Shoulder Bolt	1
6	3274-45	Capscrew	1
7	7-0055	Idler Arm	1
8	7-0056	Idler Pulley	1
9	3256-24	Washer	4
10	32152-2	Nut	5
11	7-0025	Spring	1
12	7-0051	Pulley	1
13	323-9	Capscrew	1
14	7-0023	Bearing	2
15	3256-23	Washer	2
16	32120-35	Snap Ring	2
17	7-0076	Depth Gauge	1
18	7-0037	Draw Bar	2
19	3290-255	Hairpin Cotter	2
20	7-0050	Idler Arm	1
21	7-0040	Clevis Pin	1
22	7-3618	"S" Hook	1
23	322-7	Capscrew	1

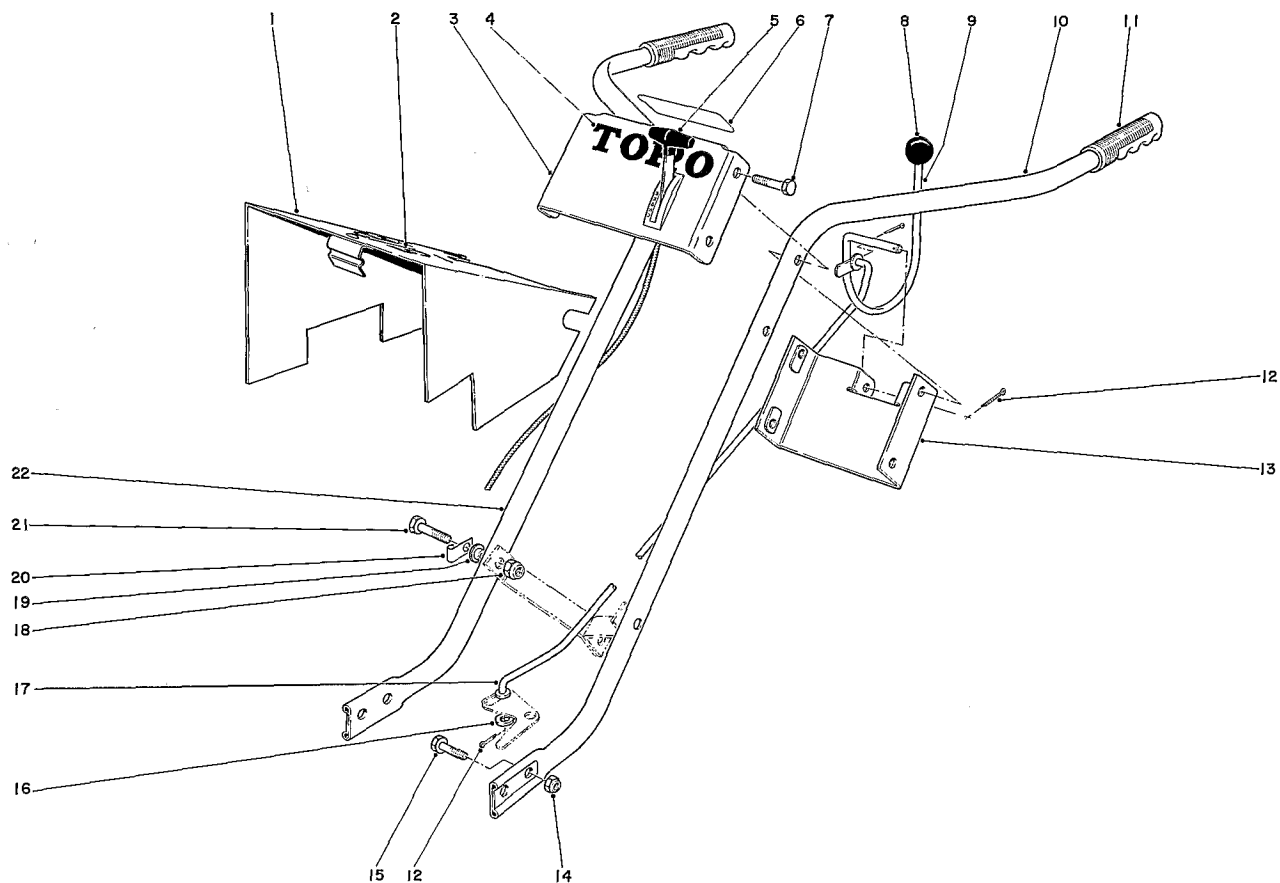
Ref. No.	Part No.	Description	No. Used
24	7-9340	Handle Support	2
25	32152-1	Locknut	2
26	7-0031	Belt Guide	2
27	3246-2	Set Screw	2
28	7-0038	Wheel Bracket	1
29	7-0075	Wheel	2
30	7-3552	Wheel Bolt	2
31	3256-6	Washer	2
32	3218-5	Jam Nut	2
33	32152-3	Locknut	2
34	7-0036	Key	1
35	7-0035	Pulley	1
36	3256-16	Washer	2
37	7-0034	Reverse Pulley	1
38	253-84	Oil Seal	1
39	256-167	Bearing	1
40	7-0045	Oil Seal	2
41	3274-31	Buttonhead Screw	4
42	3254-8	Lockwasher	4
43	3255-7	Lockwasher	2
44	3218-1	Jam Nut	2
45	7-0048	Cover	1
46	252-52	Needle Bearing	2



CHASSIS ASSEMBLY (Continued)

Ref. No.	Part No.	Description	No. Used
47	7-0047	Worm Wheel	1
48	7-0020	Gasket	1
49	281-1	Pipe Plug	1
50	7-0012	Shaft	1
51	254-89	Bearing Cup	1
52	254-88	Bearing	1
53	7-0013	Snap Ring	1
54	7-0014	Rear Spacer	1
55	7-0015	Front Spacer	1
56	251-207	Bearing	1

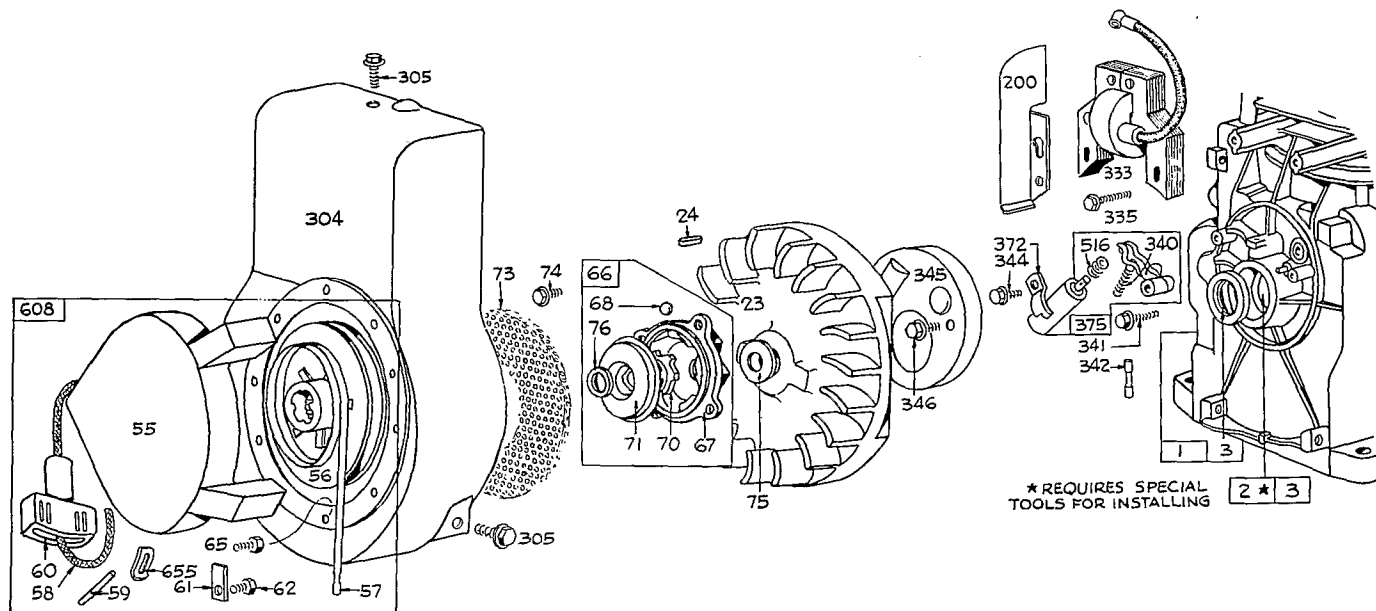
Ref. No.	Part No.	Description	No. Used
57	237-71	"O" Ring	1
58	7-0017	Plug	1
59	7-0018	Snap Ring	1
60	3257-23	Woodruff Key	1
61	7-0016	Worm Gear	1
62	3257-33	Woodruff Key	2
63	7-0046	Shaft	1
64	7-0043	Chassis	1
65	7-0040	Pin	1
66	3256-25	Washer	2



HANDLE ASSEMBLY

Ref. No.	Part No.	Description	No. Used
1	7-9190	Pulley Cover	1
2	7-9430	Decal (5 HP)	1
3	7-9290	Control Plate	1
4	7-9440	Decal (Toro)	1
5	7-3362	Throttle Control	1
6	7-9450	Decal (Clutch)	1
7	322-9	Capscrew	4
8	233-22	Knob	1
9	7-9320	Clutch Control	1
10	7-9270	Handle (L. H.)	1
11	235-19	Handle Grip	2

Ref. No.	Part No.	Description	No. Used
12	3272-7	Cotter Pin	4
13	7-9300	Handle Brace	1
14	32152-2	Locknut	4
15	323-6	Capscrew	4
16	3256-24	Washer	1
17	7-0078	Clutch Rod	1
18	32152-1	Locknut	2
19	7-2041	Bushing	2
20	7-0077	Clip	1
21	322-11	Capscrew	2
22	7-9280	Handle, R. H.	1

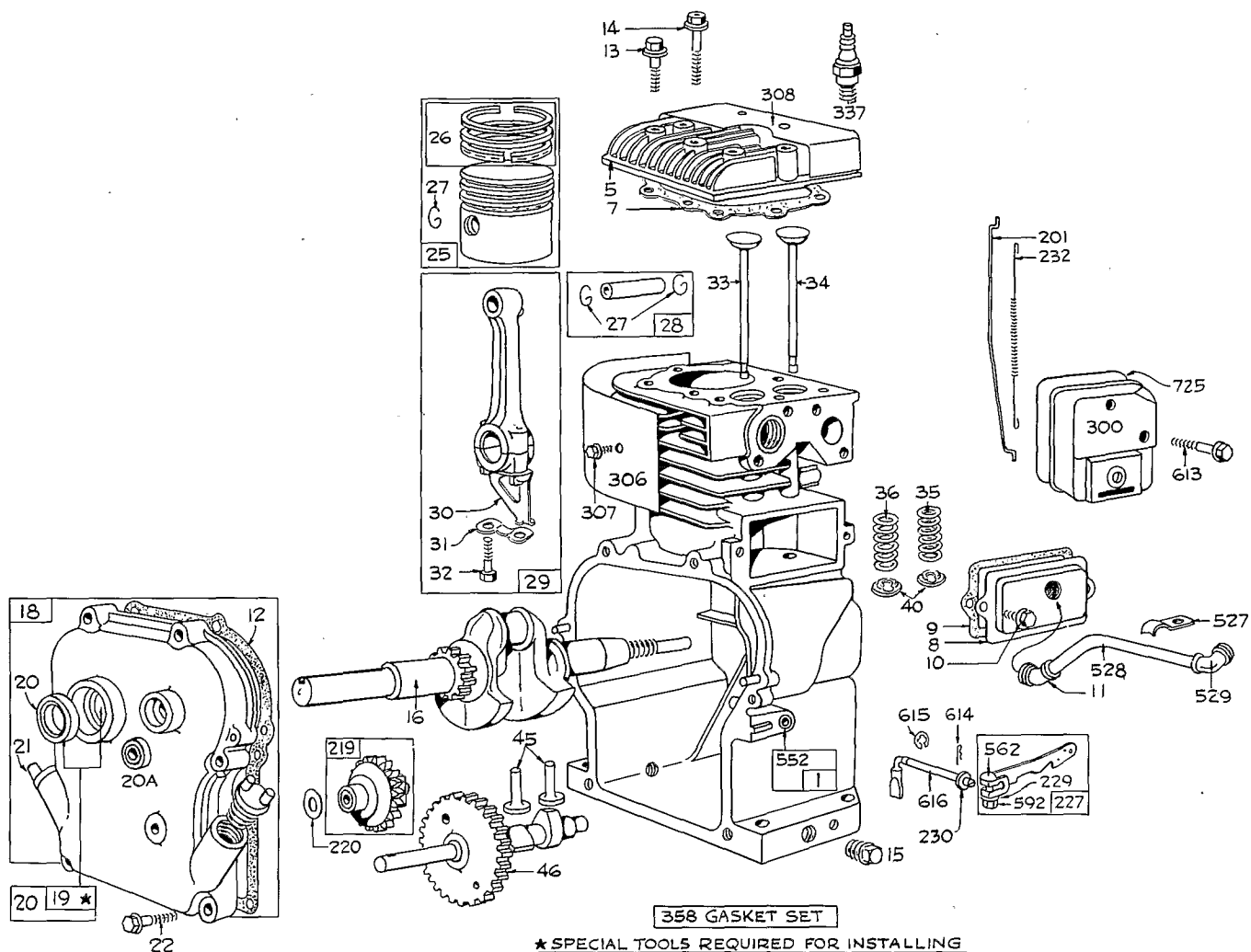


REWINDSTARTER ASSEMBLY

Ref. No.	Part No.	Description	No. Used
1	299540	Cylinder Assembly	1
2	297565	Bushing - Cylinder	1
		Note: Requires special tools for installation	1
3	89660	Seal - Oil	1
23	297229	Flywheel - Magneto	1
24	61760	Key - Flywheel	1
55	299431	Housing - Rewind Starter	1
56	295871	Pulley - Rewind Starter	1
57	294303	Spring - Rewind Starter	1
58	66564	Rope - Rewind Starter	1
59	230228	Pin - Starter Grip	1
60	66728	Grip - Starter Rope	1
61	68848	Bumper - Starter Pulley	1
62	93254	Screw-Pulley Bumper Mounting	1
65	93067	Screw - Rewind Starter Housing Mounting	1
66	298310	Clutch Assy.-Rewind Starter	1
67	211383	Housing - Starter Clutch	1
68	63770	Ball - Clutch	1
70	298436	Ratchet - Rewind Starter	1
71	221653	Washer - Clutch Retainer	1
73	221923	Screen - Starter Pulley	1
74	93490	Screw - Sem	1
75	220865	Washer - Spring	1
76	68238	Washer - Ratchet Sealing	1

Ref. No.	Part No.	Description	No. Used
200	221480	Guide - Air	1
304	299410	Housing - Blower	1
305	93158	Screw - Blower Housing Mounting	1
333	298316	Armature - Magneto	1
335	93414	Screw - Armature Mtg. Sem	1
340	26018	Spring - Breaker Arm	1
341	93381	Screw - Breaker Arm Mounting Sem	1
342	65704	Plunger - Breaker Point	1
344	93042	Screw - Condenser Clamp Mounting Sem	1
345	220366	Cover - Breaker Point and Condenser	1
346	93014	Screw - Dust Cover Mounting	1
372	220477	Clamp - Condenser	1
375	294628	Breaker Points and Condenser Set	1
		Note: 299061 Ignition Kit Includes: 294628 Point Set	
		65704 Plunger	
		61760 Key - Flywheel	
516	260374	Spring - Connector	1
608	299334	Starter Assy. - Rewind Used on type No. 0147	
655	221014	Anchor - Spring	1

ENGINE BRIGGS & STRATTON MODEL NO. 130292-0371

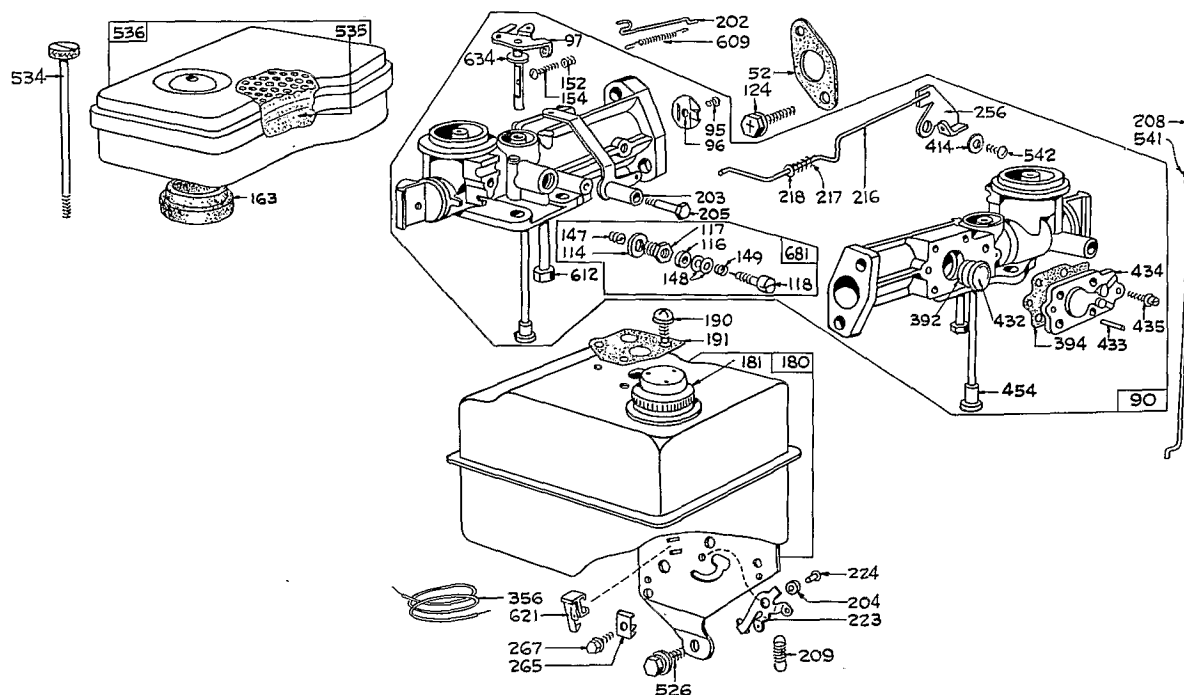


ENGINE BRIGGS & STRATTON MODEL NO. 130292-0371

Ref. No.	Part No.	Description	No. Used
5	211542	Head - Cylinder	1
7	*270383	Gasket - Cylinder Head	1
8	294178	Breather - Valve Chamber	1
9	*27549	Gasket - Valve Cover	1
10	93394	Screw - Breather Mtg. Sem	1
11	66578	Grommet - Breather Tube	1
12	*270080	Gasket - Crankcase - .015" thick (Standard)	1
	270125	Gasket - Crankcase - .005" thick	1
	270126	Gasket - Crankcase - .009" thick	1
13	93368	Screw - Cylinder Head (2-3/32" long)	1
14	93369	Screw - Cylinder Head (2-15/32" long)	1
15	91249	Plug - Pipe, 1/4" Std., Square Head	1
16	260938	Crankshaft	1
18	298183	Cover Assy. - Crankcase	1
19	297603	Bushing - Crankcase Cover Note: Requires special tools for installation.	1
20	294606	Seal - Oil	1
20A	298041	Seal - Oil	1
21	66768	Plug - Oil Filler	1
22	93032	Screw - Crankcase Cover Mounting Sem	1
25	298904	Piston Assy. - Standard	1
	298905	Piston Assy. - .010" O. S.	1
	298906	Piston Assy. - .020" O. S.	1
	298907	Piston Assy. - .030" O. S.	1
26	298982	Ring Set - Standard Piston Consists of: 211467 Ring, Piston, Comp., Top, Standard 211468 Ring, Piston, Comp., Center, Standard 211469 Ring, Piston, Oil, Standard	1
	298983	Ring Set - .010" O. S. Piston Consists of: 211504 Ring, Piston, Comp., Top, .010" O. S. 211503 Ring, Piston, Comp., Center, .010" O. S. 211505 Ring, Piston, Oil, .010" O. S.	1
	298984	Ring Set - .020" O. S. Piston Consists of: 211507 Ring, Piston, Comp., Top, .020" O. S. 211506 Ring, Piston, Comp., Center, .020" O. S. 211508 Ring, Piston, Oil, .020" O. S.	1

Ref. No.	Part No.	Description	No. Used
	298985	Ring Set - .030" O. S. Piston Consists of: 211511 Ring, Piston, Comp., Top, .030" O. S. 211510 Ring, Piston, Comp., Center, .030" O. S. 211512 Ring, Piston, Oil, .030" O. S.	1
27	26026	Lock - Piston Pin	1
28	298909	Pin Assy. - Piston - Std.	1
	298908	Pin Assy. - Piston - .005" O. S.	1
29	299430	Rod Assy. - Connecting Note: For Connecting Rod with .020" undersize Crank-pin Bore - order No. 390459	1
30	221890	Dipper - Connecting Rod	1
31	221876	Lock - Conn. Rod Screw	1
32	92296	Screw - Connecting Rod	1
33	211119	Valve - Exhaust	1
34	261044	Valve - Intake	1
35	260552	Spring - Intake Valve	1
36	26478	Spring - Exhaust Valve	1
40	93312	Retainer - Valve Spring	1
45	260642	Tappet - Valve	1
46	211618	Gear - Cam	1
201	260661	Link - Governor	1
219	297656	Gear - Governor	1
220	221551	Washer - Thrust	1
227	297601	Lever Assy. - Governor	1
229	220680	Washer - Governor Lever	1
230	221559	Washer - Governor Lever	1
232	260478	Spring - Governor Link	1
300	297506	Muffler - Exhaust	1
306	221511	Shield - Cylinder	1
307	93042	Screw - Cylinder Shield Mounting Sem	1
308	221512	Cover - Cylinder Head	1
337	298809	Plug - Spark (with Gasket) Note: Spark Plugs 298809, use Ignition Cable Terminal No. 221798.	1
358	297615	Gasket Set	1
527	221514	Clamp - Breather Tube	1
528	230722	Tube - Breather	1
529	67838	Grommet - Breather Tube	1
552	230732	Bushing - Governor	1
562	92613	Bolt - Governor Lever	1
592	90356	Nut - Hex. - 10-24	1
613	93377	Screw - Muffler Mounting	1
614	93306	Cotter - Hairpin	1
615	93307	Retainer - E-Ring	1
616	230723	Crank - Governor	1
725	221885	Shield - Heat	1

*Included in Gasket Set - Part No. 297615.



CARBURETOR ASSEMBLY

Ref. No.	Part No.	Description	No. Used	Ref. No.	Part No.	Description	No. Used
52	*27355	Gasket - Carburetor Mtg. (2)	1	217	260189	Spring - Choke Link	1
90	299576	Carburetor Assy.	1	218	221198	Washer - Choke Link	1
95	93385	Screw - Throttle Valve to Shaft Sem	1	223	221517	Lever - Governor Control	1
96	211203	Throttle - Carburetor	1	224	93491	Rivet - Governor Control Lever Mounting	1
97	299212	Shaft and Lever - Throttle	1	256	299859	Crank - Bell	1
114	66594	Gasket - Needle Valve Nut	1	265	221535	Clamp - Casing	1
116	65978	Packing - Needle Valve	1	267	93496	Screw - Sem	1
117	230590	Nut - Needle Valve	1	356	295413	Wire - Ground	1
118	23433	Valve - Needle	1	392	260455	Spring - Fuel Pump Diaphragm	1
124	93357	Screw - Hex. Head	1	394	270026	Diaphragm	1
147	230591	Seat - Needle Valve	1	414	220982	Washer	1
148	22235	Washer - Needle Valve (2)	1	432	221377	Cap - Spring	1
149	26336	Spring - Needle Valve	1	433	93265	Pin - Diaphragm Cover	1
152	260575	Spring - Throttle Adjustment	1	434	210959	Cover - Diaphragm	1
154	92634	Screw - Machine, Rd. Hd. - 5-40 x 5/8"	1	435	93141	Screw - Diaphragm Cover	1
163	*27660	Gasket - Air Cleaner Mtg.	1	454	296178	Housing - Fuel Pipe Screen (for 3/16" O.D. Pipe)	1
180	297600	Tank Assembly - Fuel	1	526	93343	Screw - Tank Bracket Mounting Sem	1
181	298425	Cap - Fuel Tank	1	534	93322	Screw - Air Cleaner	1
190	93341	Screw - Fuel Tank Mounting Sem	1	535	27987	Element - Air Cleaner	1
191	*27911	Gasket - Fuel Tank Mtg.	1	536	297036	Cleaner Assembly - Air	1
202	260678	Link - Throttle	1	541	22398	Washer	1
203	297718	Crank - Bell	1	542	92265	Screw	1
204	230844	Bushing - Governor Lever	1	609	260694	Spring - Throttle Link	1
205	93566	Screw - Shoulder	1	612	296811	Pipe - Fuel	1
208	230737	Rod - Control	1	621	297472	Switch - Stop	1
209	260695	Spring - Governor	1	634	270167	Washer, Throttle Shaft	1
216	299859	Link - Choke	1	681	299060	Needle Valve Kit	1

*Included in Gasket Set - Part No. 297615.

SPECIFICATIONS

ENGINE: Briggs & Stratton Model No. 130292-0371

FUEL TANK CAPACITY: 3 Quarts

CLUTCH: Two tight-slack V-belts using idler pulleys.

BOLO TINE: 14" diameter, #6 gauge, (16) hardened, high-carbon steel blades bolted to steel hub flanges.

BOLO TINE DRIVE:

Forward: High Speed; "4L" Section V-belt on 2.50 P.D. engine pulley to 5.20 P.D. transmission pulley. (2.1:1 reduction).

Forward: Low Speed; "4L" Section V-belt on 2.25 P.D. engine pulley to 5.50 P.D. transmission pulley. (2.44:1 reduction).

Reverse: "3L" Section V-belt on 1.30 P.D. pulley on auxiliary PTO to 5.0 P.D. transmission pulley. (3.85:1 reduction).

TRANSMISSION: Grey iron casting with single thread, hardened and ground steel worm and 21-tooth bronze alloy worm wheel, running in oil. (21.1:1 reduction). Total reduction 50:1 in low speed.

TRANSMISSION LUBE CAPACITY: 4.5 oz. SAE 90

CONTROLS:

Throttle: Control wire and casing; operating lever on handlebar cover. Positions for stop and run.

Clutch: Single, over-center lever for forward, neutral and reverse. Lever must be held in reverse position for engagement.

WHEELS: 7" diameter stamped steel rims. Spot-welded construction, powdered iron bearings.

TIRES: 10 x 1.75 semi-pneumatic

FRAME: Cast iron chassis assembly bolted to two draw-bars which are pinned to wheel bracket and yoke assembly.

HANDLE: Two 1-1/8" diameter steel tubing handles with zinc plating and clear chromate dip. Handle grip height — 35", width — 25"

DEPTH GAUGE BAR: 3/8" x 1-1/2" flat, steel bar; adjustable — 0 to 8"

DEPTH OF SWATH: 7", 9" with multiple passes.

WIDTH OF SWATH: Adjustable by changing tine position — 14" to 26"

DIMENSIONS:

Overall width: 26"

Overall length: 52"

Overall height: 35"

WEIGHT: 133 lbs.

STORAGE INSTRUCTIONS

Engines to be stored over 30 days should be completely drained of fuel to prevent gum deposits forming on essential carburetor parts, fuel filter, fuel lines, and tank.

A. All fuel should be removed from fuel tank. Run the engine until it stops from lack of fuel. The small amount of fuel that remains in the sump of the tank should then be removed by absorbing it with a clean dry cloth.

B. While engine is still warm, drain oil from crankcase. Refill with fresh oil.

C. Remove spark plug, pour 1 ounce of SAE30 oil into cylinder and crank slowly to distribute oil. Replace spark plug.

D. Clean dirt and chaff from cylinder, cylinder head fins, and blower housing.

CAUTION: Drain fuel into container outdoors away from fire or flame.

PRODUCT CHANGES

In an effort to make improvements available to Toro owners as quickly as possible, minor changes are incorporated into Toro's products from time to time that do not become immediately shown in the Parts Catalog. If such a change apparently has been made in your unit, which is not reflected in your manual, see your Toro distributor or his authorized Toro service dealer for information and part numbers.

IMPORTANT ORDERING INSTRUCTIONS

Repair parts are available from your TORO dealer. To insure getting correct parts without delay, please furnish the following information:

1. Serial number of your product as shown on the name plate.
2. Part number, description and quantity of each part required.
3. Name and address where parts are to be shipped.
4. Do NOT order by reference number, use part number only.

THE TORO PROMISE

It is Toro's policy to design and produce Toro products to provide our customers with a high level of performance and durability in normal operation. Our products, however, are produced in high volume, and it is inevitable that occasionally a unit will reach a customer with a defect in materials or workmanship which causes that unit to fall below the normal high level of Toro

performance. Invariably, such a defect will be noticed in a residential product within one year, and in an institutional product within ninety days after purchase. Recognizing this possibility, Toro has established a simple guarantee policy and procedure that is intended to assure customer satisfaction. This guarantee statement is as follows:

The Toro Promise

Toro Manufacturing Corporation promises to repair any TORO product for the original purchaser if defective in materials or workmanship. The following time periods from the date of purchase apply:

Residential products 1 year
Residential products used commercially. . . 45 days
Institutional products 90 days

The costs of parts and labor are included, but the customer pays the transportation costs. Just return any residential product to a TORO Service Dealer, or any institutional product to a TORO distributor.

Should you feel that a product is defective, and wish to rely on The Toro Promise, the following procedure is recommended:

1. Contact any TORO dealer or distributor, but preferably the dealer or distributor from whom you purchased the product.
2. He will instruct you to either return the product to him, or tell you the name and address of your nearest TORO Service Dealer if the product is to be returned to such dealer.
3. Take the product and your original sales slip, or other evidence of purchase date, to the servicing dealer.

4. The servicing dealer will inspect the unit, advise you whether the product is defective and, if so, make all repairs necessary to correct the defect without extra charge to you.

If for any reason you are dissatisfied with the dealer's analysis of the defect or the service he performs, we urge you to contact us. Write:

TORO "Customer Care" Department
8111 Lyndale Avenue South
Minneapolis, Minnesota 55420

[illegible]

MAINTENANCE RECORD

[illegible]