

Cruise Control Kit for Lawn and Garden Tractors	
MODEL NO. 100-8714 MODEL NO. TR100D8714	INSTALLATION INSTRUCTIONS

Loose Parts

Note: Use the chart below to identify parts for assembly.

DESCRIPTION	QTY.	USE
Cruise Switch Cover	1 1	Installing Cruise Switch and Panel
Magnet Tie Strap	1 1	Installing Magnet
Screw Wire Harness Relay Tie Strap	1 1 1 3	Installing Wire Harness

Removing Negative Battery Cable

IMPORTANT: Remove the negative battery cable before installing this kit.

Removing Rear Fender and Foot Panel

1. Disengage the power take off (PTO), and turn the ignition key to "OFF" to stop the engine. Remove the key.
2. Raise seat up. Unplug wire harness from seat switch and the no mow in reverse switch.

3. Remove the bolts attaching the rear fender to frame (Fig.2).

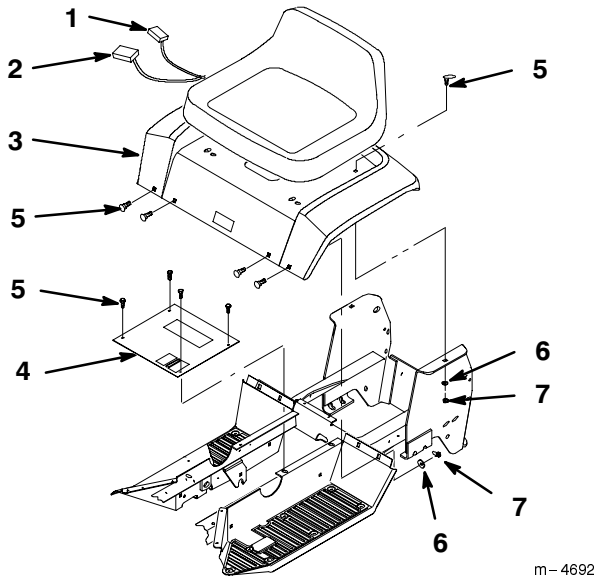


Figure 1

- | | |
|------------------------|-----------|
| 1. Seat Switch Plug | 5. Bolt |
| 2. Reverse Switch Plug | 6. Washer |
| 3. Fender | 7. Nut |
| 4. Foot Panel | |

Draining Gas Tank

⚠ DANGER

POTENTIAL HAZARD

- In certain conditions gasoline is extremely flammable and highly explosive.

WHAT CAN HAPPEN

- A fire or explosion from gasoline can burn you, others, and cause property damage.

HOW TO AVOID THE HAZARD

- Drain gasoline from the fuel tank when the engine is cold. Do this outdoors in an open area. Wipe up any gasoline that spills.
- Never drain gasoline near an open flame or where gasoline fumes may be ignited by a spark.
- Never smoke a cigarette, cigar or pipe.

1. Drain gasoline from gas tank. Refer to your operator manual on Draining the Fuel Tank.
2. Remove two bolts, washers, and spacers fastened to frame and gas tank (Fig.2).

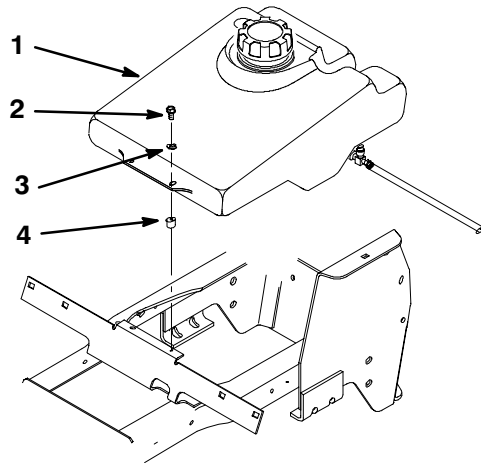


Figure 2

- | | |
|-------------|-----------|
| 1. Gas Tank | 3. Washer |
| 2. Bolt | 4. Spacer |

Removing Side Panel

1. Remove bolts and side panel from tractor (Fig. 3).
2. Remove the bolts and foot panel from tractor (Fig. 3).

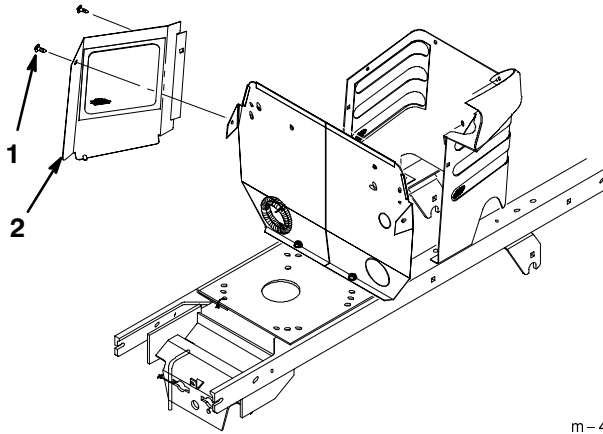


Figure 3

1. Bolt
2. Side Panel

m-4698

Removing Control Panel

1. Lift hood up on tractor.
2. Loosen bolts holding control panel to tractor (Fig. 4).
3. Remove nutss holding control panel to tractor (Fig. 4).
4. Move control panel away from dash of tractor (Fig. 4).

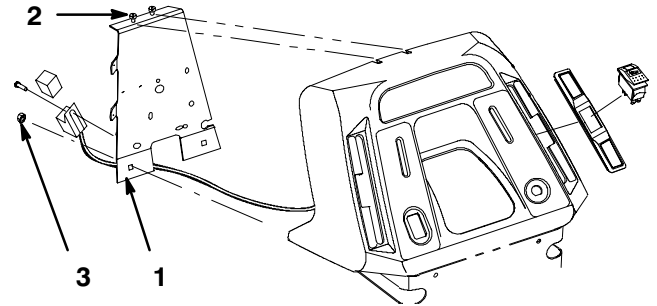


Figure 4

1. Control Panel
2. Bolts (Loosen)
3. Nuts (Remove)

Installing Magnet

1. Loosen bolts that connect bracket to frame (Fig. 5).
2. Slide the spring and magnet on to post and with the flange from magnet installed into slot in cruise bracket (Fig. 5).
3. Tighten the cruise bracket (Fig. 5).

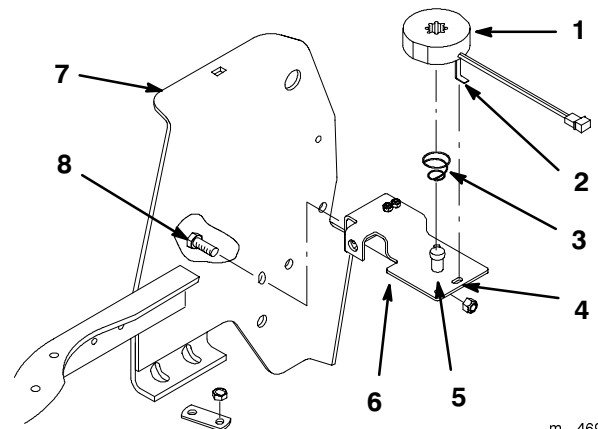


Figure 5

1. Magnet
2. Flange
3. Spring
4. Slot
5. Post
6. Bracket
7. Frame
8. Bolt

m-4693

Installing Cruise Switch and Panel

1. To the right of the steering wheel, remove the existing panel on dash (Fig. 2).
2. Install the new panel and switch into dash of tractor as shown in figure 6.

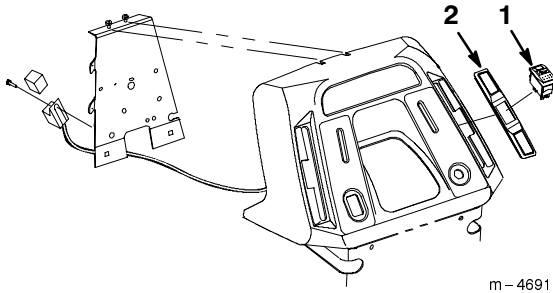


Figure 6

1. Cruise Switch
2. Cruise Switch Panel

Routing Wire Harness

1. Route the magnet connector of harness through the lower hole in panel below steering wheel (Fig. 7).

Note: There are hydraulic hoses routed through lower hole in panel also.

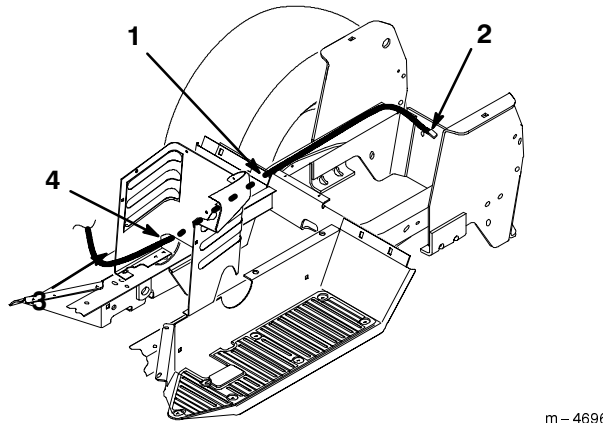


Figure 7

1. Magnet connector
2. Hole in Panel
3. Right Side Fender Frame

2. Route harness through right side fender frame towards the rear of the tractor (Fig. 7).
3. Remove the R-clamps along the right frame of tractor (Fig. 8).
4. Install harness wire into the existing conduit for the reverse switch (Fig. 8).
5. Install the R-clamps along the right frame of tractor (Fig. 8).

Note: Install R-clamps correctly as shown in figure 8.

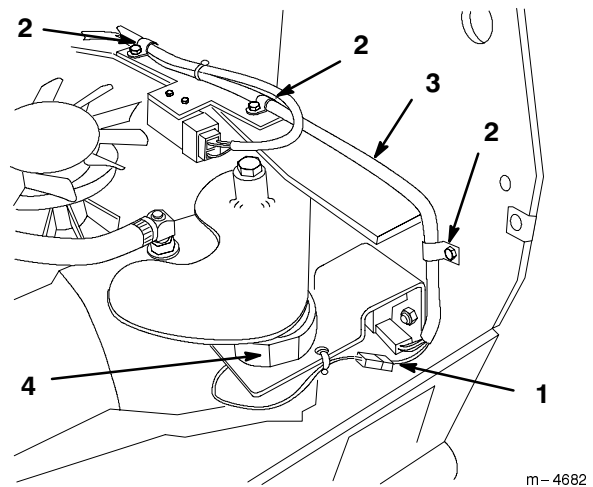


Figure 8

1. Wire Harness (Installed in Conduit)
2. R-Clamp
3. Existing Conduit
4. Magnet

Installing Wire Harness

Use figure 9 as a reference for harness connections.

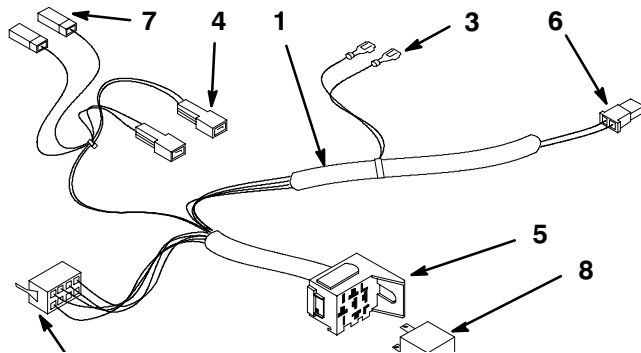


Figure 9

- | | |
|----------------------------|------------------------------|
| 1. Harness | 6. Magnet Connector |
| 2. Cruise Switch Connector | 7. Cruise Harness Receptacle |
| 3. Brake Switch terminals | 8. Relay |
| 4. Tab Connector | |
| 5. Relay Socket | |

Installing Relay Socket

1. With the control panel removed, install self threading bolt and relay socket to panel (Fig. 9 and 10).
2. Route harness under control panel, in slot (Fig. 11).

Note: Install relay socket at an angle as shown in figure 10.

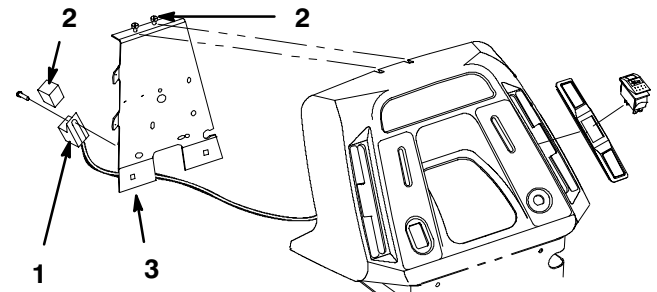


Figure 10

- | | |
|-----------------|------------------|
| 1. Relay Socket | 3. Control Panel |
| 2. Relay | 4. Bolts |

3. Reinstall the control panel to tractor (Fig. 10).

Installing Harness to Hour Meter

Note: Locate hour meter terminals and mark which terminal the pink lead is plugged into.

1. Remove the black and pink wire leads that go to hour meter.
2. Plug in the pink wire lead into the red wire tab connector (Fig. 9 and 11). Plug the black wire lead into the black wire tab connector (Fig. 9 and 11).
3. Plug the red wire receptacle to the terminal which the pink wire was located on hour meter (Fig. 9 and 11).
4. Plug the black wire lead to the terminal which the black wire was located on hour meter (Fig. 9 and 11).

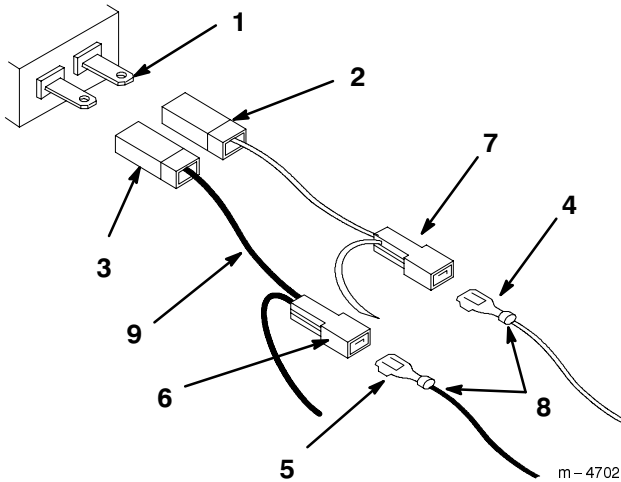


Figure 11

- | | |
|--------------------------------------|---------------------------|
| 1. Hour Meter Terminals | 5. Black Wire Lead |
| 2. Red - Cruise Harness Receptacle | 6. Black Tab Connector |
| 3. Black - Cruise Harness Receptacle | 7. Red Tab Connector |
| 4. Pink Wire Lead | 8. Tractor wire harness |
| | 9. Cruise control harness |

Installing Harness to Cruise Switch

1. From Cruise control harness, plug cruise switch connector into the cruise switch as shown in figures 9 and 12 .
2. Install a plastic ties around harness under the cruise switch and where needed.

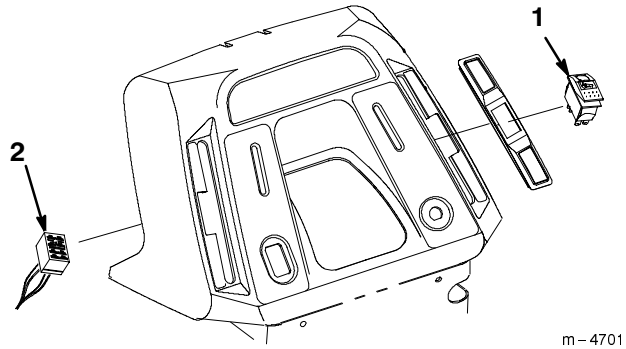


Figure 12

- | | |
|------------------|----------------------------|
| 1. Cruise Switch | 2. Cruise Switch Connector |
|------------------|----------------------------|

Installing Harness to Brake Socket

1. Locate the brake socket down near the control panel.
2. Install the black and tan brake switch terminals from cruise harness into the brake socket on unit's harness (Fig. 9 and 13).

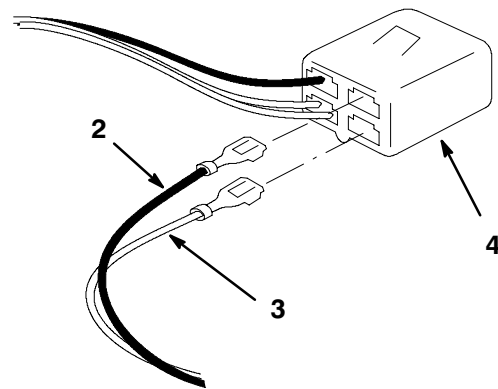


Figure 13

- | | |
|--------------------------------|-----------------|
| 1. Black Brake Switch Terminal | 3. Brake Socket |
| 2. Beige Brake Switch Terminal | |

Installing Harness to Magnet

1. Plug harness into the wire lead from the magnet.
2. Install a plastic tie through hole in bracket and attach the magnet lead (Fig 14).

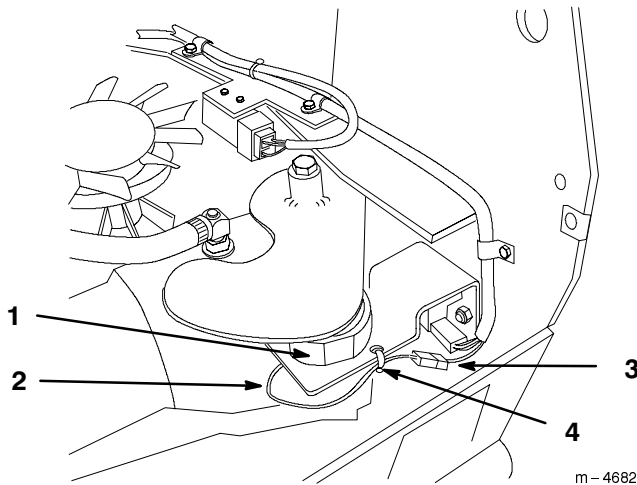


Figure 14

- | | |
|----------------|---------------------|
| 1. Magnet | 3. Wire Harness |
| 2. Magnet Lead | 4. Plastic Wire Tie |

Reassemble the Tractor

1. Install the gas tank.
2. Install the rear fender.
3. Install foot panel and side panel.
4. Connect the seat and mow in reverse switches.

Using the Cruise Control

The cruise control is optional on some models. A 3 position: Set-Lock (spring loaded), On and Off-Unlock dash switch (Fig. 15) controls the engagement. Cruise control maintains the traction control position without foot pressure. Cruise control is intended for operation in the forward direction only. Do not use cruise control in reverse.

Engaging the Cruise Control

1. While holding your foot steady on the traction control, push the cruise control switch (Fig. 15) to the “SET”-“LOCK” position.

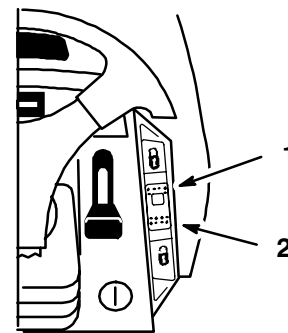


Figure 15

- | | |
|-------------|---------------|
| 1. Lock-Set | 2. Unlock-Off |
|-------------|---------------|

2. This locks the traction control in position and your foot can then be removed from the traction control. A constant ground speed will be maintained.

Disengaging the Cruise Control

1. While holding your foot steady on the traction control, move the cruise control switch (Fig. 15) to the “UNLOCK”-“OFF” position.
2. This unlocks the traction control and your foot then operates the traction control.
3. For quick stops, just press on the brake pedal. This automatically disengages the cruise control and applies the brake at the same time.

Wiring Diagram

