



Form No. 3403-941 Rev C

**Count on it.**

# Parts Catalog

## Cab Kit

### Workman® GTX Utility Vehicle

Model No. 07142—Serial No. 316000001 and Up



# Ordering Replacement Parts

To order replacement parts, please supply the part number, the quantity, and the description of each part desired.

## Understanding Reference Numbers

Each identified part in an illustration has a reference number. The reference number for a part also appears in the parts list, along with other information about the part.

This catalog uses two special reference number formats, one to indicate parts in a service assembly and another to indicate the quantity of a given part in an illustration.

## Service Assembly Reference Numbers

Parts in service assemblies have reference numbers in the form a:b. The a represents the reference number of the entire service assembly and the b represents a sequential number unique to each part within the service assembly.

For example, a wheel assembly might be identified by reference number 6, the tire by 6:1, the valve by 6:2, and the wheel by 6:3. When you order the assembly identified by reference number 6, you receive all parts identified by reference numbers 6:1, 6:2, and 6:3. However, you may also order any part individually. Reference numbers of this type appear in illustration and in parts lists.

## Reference Numbers Indicating Quantity

In an illustration, if a reference number indicates more than one part, the reference number has the form nX y. The n represents the quantity of the part, the X is the multiplication symbol, and the y represents the reference number.

For example, in an illustration, the reference number 2X 37 means that two of the parts identified by reference number 37 are indicated.

# Contents

Frame Mount and Interior Seal Assembly ..... 4

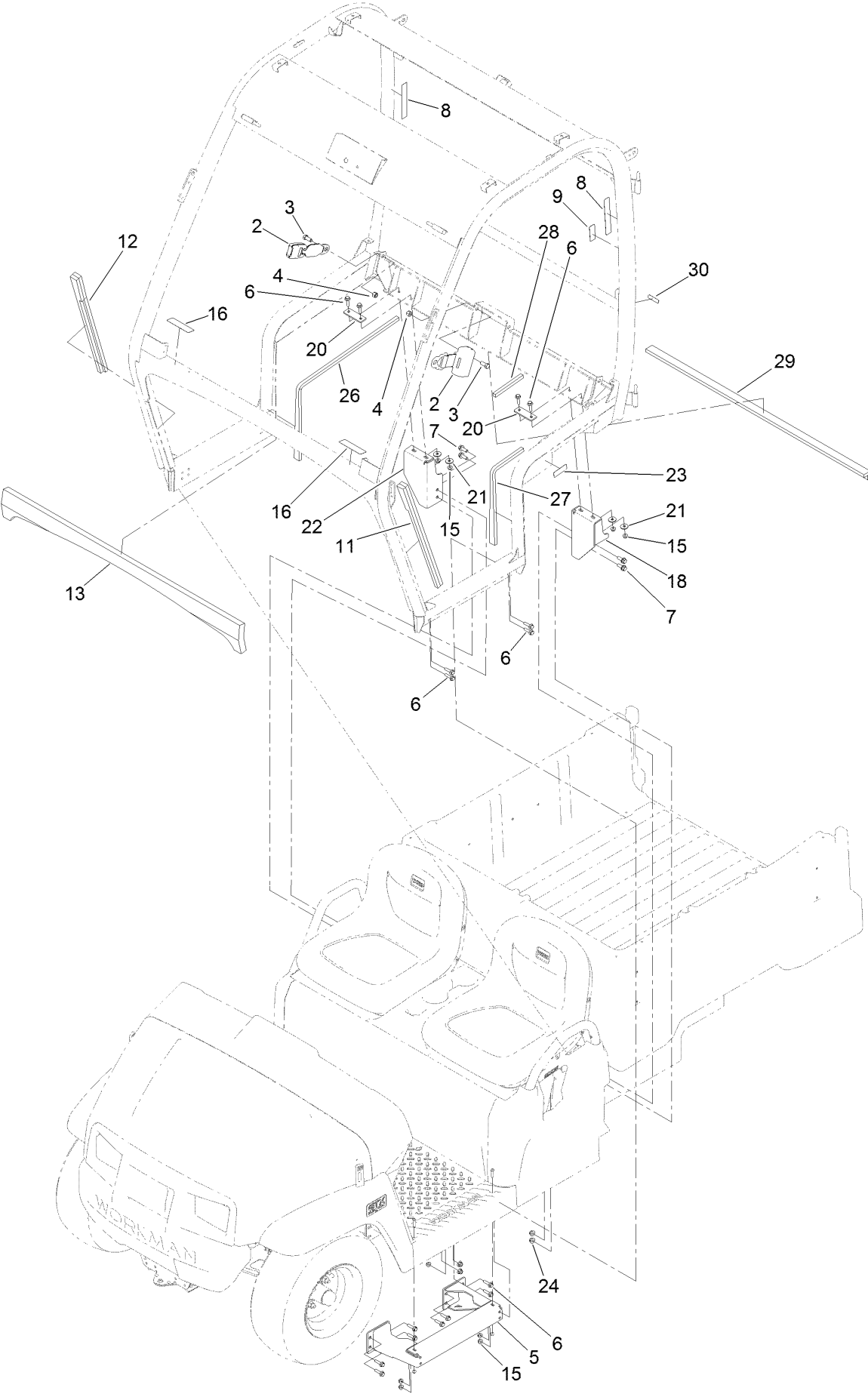
Roof Console and Windshield Wiper Assembly..... 6

Front and Rear Window Assembly ..... 8

Wire Harness Assembly ..... 10

Attachments and Accessories ..... 12

# Frame Mount and Interior Seal Assembly

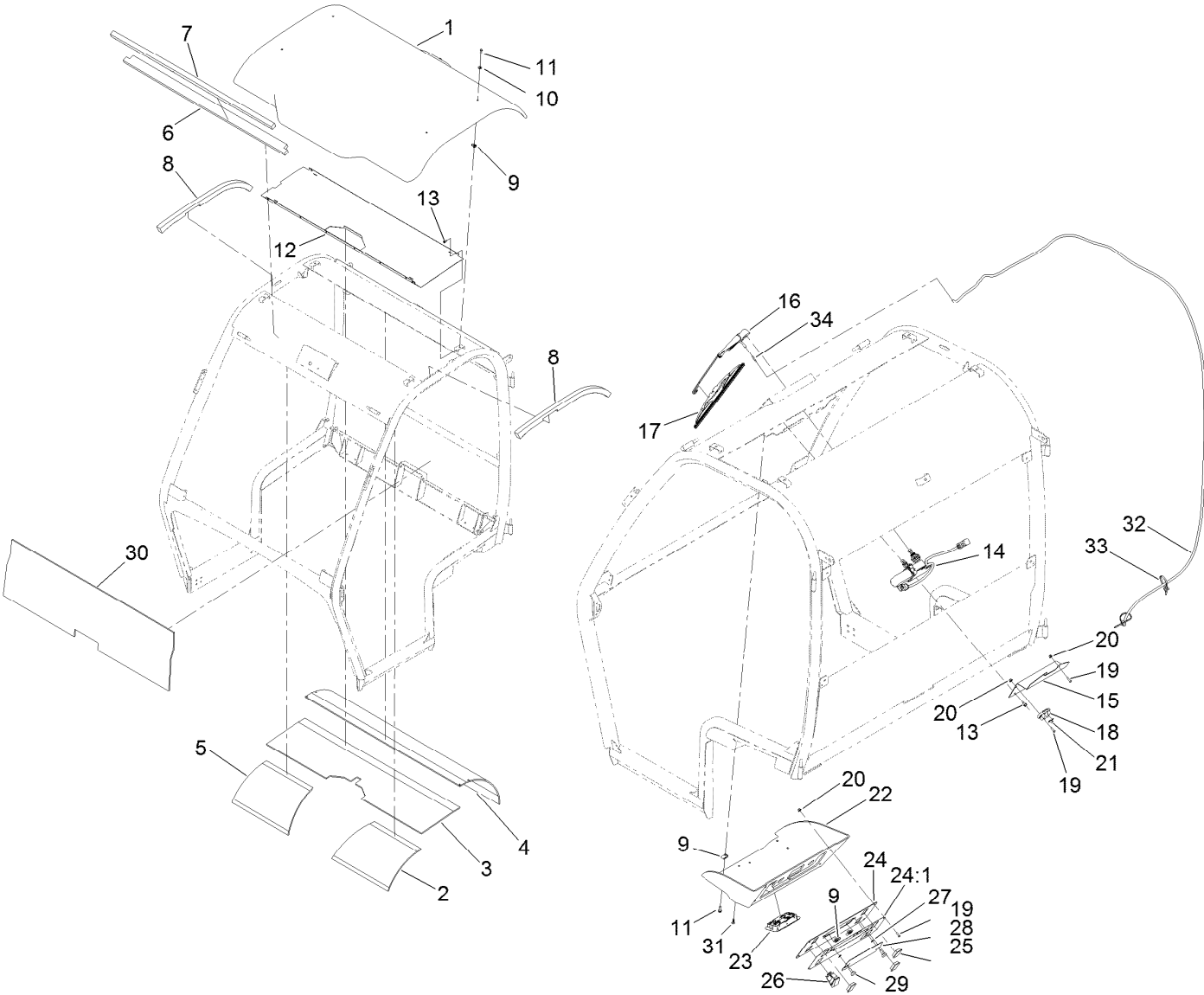


## Frame Mount and Interior Seal Assembly (continued)

<i>Ref.</i>	<i>Part Number</i>	<i>Qty.</i>	<i>Description</i>
2	133-1022	2	Belt-Safety
3	3212-4	4	Screw-HH
4	3296-7	4	Nut-Lock
5	133-0833-03	2	Support-Floor Plate
6	132-3837	28	Screw-HHF
7	131-2220	4	Screw-HHF
8	133-1016	2	Decal-Danger
9	133-1017	1	Decal-ROPS
11	133-1055	1	Seal-Foam, RH
12	133-1054	1	Seal-Foam, LH
13	133-0773	1	Foam-Seal
15	104-8300	28	Nut-HF, NI

<i>Ref.</i>	<i>Part Number</i>	<i>Qty.</i>	<i>Description</i>
16	130-5964	2	Decal-Window, Pin
18	133-0756-03	1	Support-LH
20	132-3649	2	Plate-Support
21	115-7109	4	Washer-Flat
22	133-0757-03	1	Support-RH
23	131-8410	1	Decal-Danger, Fuel
24	104-8301	4	Nut-HF, NI
26	133-1031	1	Seal-Foam, Interior
27	133-1032	1	Seal-Foam, Interior
28	133-1033	1	Seal-Foam, Interior
29	133-1036	1	Seal-Foam
30	120-9570	1	Decal-Warning

# Roof Console and Windshield Wiper Assembly

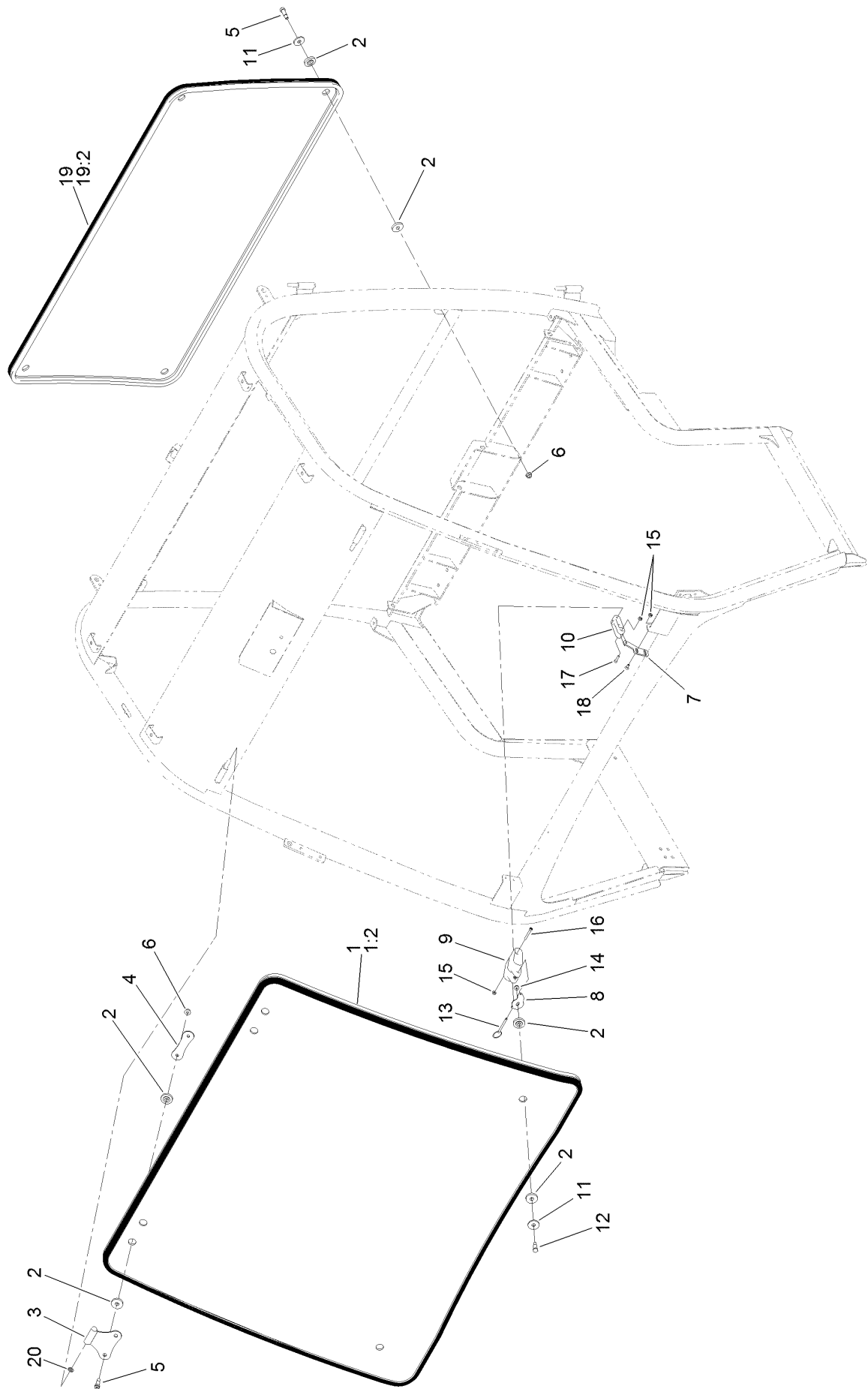


## Roof Console and Windshield Wiper Assembly (continued)

<i>Ref.</i>	<i>Part Number</i>	<i>Qty.</i>	<i>Description</i>
1	133-0669	1	Roof
2	133-0774	1	Foam-Headliner, Front LH
3	133-0784	1	Foam-Headliner, Center
4	133-0785	1	Foam-Headliner, Rear
5	133-0786	1	Foam-Headliner, Front RH
6	133-0775	2	Seal-Foam, Roof
7	133-1094	1	Foam-Roof, Front
8	133-1088	2	Seal-Foam, Roof
9	107069	11	Clip
10	119-0872	5	Washer-Sealing, Bonded
11	32105-15	9	Screw-HWH
12	133-0781-03	1	Panel-Headliner
13	32104-17	4	Screw-HWH
14	130-6087	1	Wiper Motor ASM
15	132-3628-03	1	Mount-Fuse Block
16	127-9878	1	Arm-Wiper
17	133-1084	1	Blade-Wiper
18	42862	1	Block-Terminal, Ground

<i>Ref.</i>	<i>Part Number</i>	<i>Qty.</i>	<i>Description</i>
19	104-2408	8	Screw-HSBH
20	120-4578	8	Nut-HF
21	42863	1	Strip-Jumper
22	132-3627	1	Console-Roof, Top
23	125-7437	1	Light-Dome
24	130-5444	1	Console Panel ASM
24:1	130-5439	1	Decal-Console
25	99-7420	3	Plug-Hole
26	119-8355	1	Switch-Rocker
27	106-8737	2	Nut-Retainer
28	125-9603-03	1	Plate-Cover, Fuse
29	125-7438	2	Knob-Screw, Thumb
30	133-1034	1	Foam-Interior
31	125-8067	2	Plug-Plastic
32	133-1078	1	Hose-Wiper Fluid
33	3290-378	2	Tie-Cable
34	127-9905	1	Fitting-Hose, Barb

# Front and Rear Window Assembly

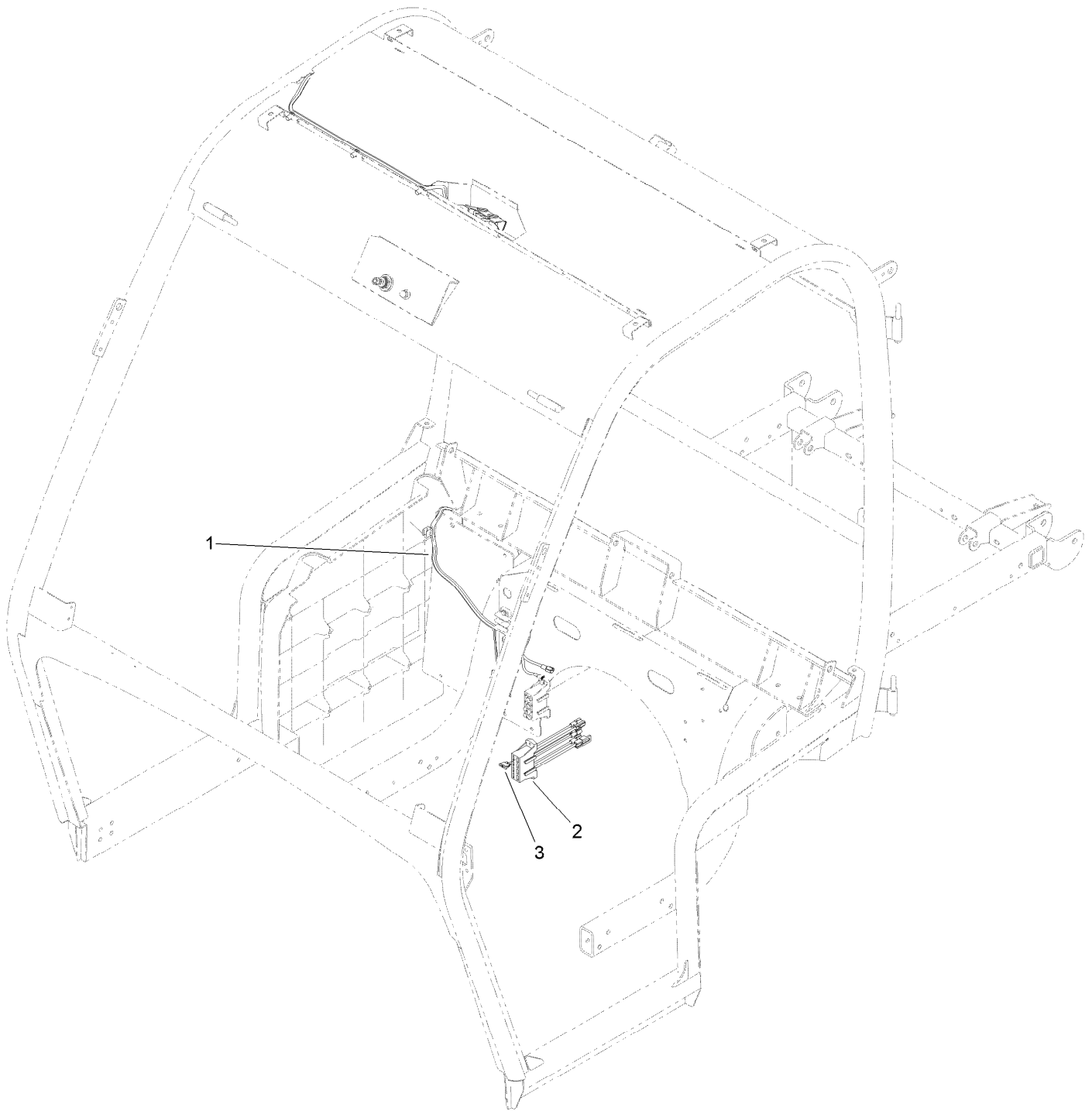




## Front and Rear Window Assembly (continued)

<i>Ref.</i>	<i>Part Number</i>	<i>Qty.</i>	<i>Description</i>	<i>Ref.</i>	<i>Part Number</i>	<i>Qty.</i>	<i>Description</i>
1	133-1081	1	Front Hinged Window ASM	11	125-9676	6	Washer-Backup
1:2	132-3646	1	Seal-Trim, Front Window	12	119-9812	2	Bolt-Shoulder
2	125-9982	20	Bushing-Flange	13	127-9850	2	Pin-Release, Quick
3	121-8535	2	Hinge-Window	14	104-7201	2	Nut-HF
4	127-9933	2	Plate-Backer, Windshield	15	120-9681	8	Nut-Lock, NI
5	125-9520	8	Screw-Shoulder, HSH	16	3274-59	2	Screw-HSH
6	104-8300	8	Nut-HF, NI	17	3274-14	2	Screw-HSH
7	130-0590	2	Mount-Tab	18	1-807513	4	Bolt-CARR
8	125-9987	2	Mount-Latch	19	133-1082	1	Rear Window ASM
9	125-9792	2	Handle-Window	19:2	132-3626	1	Seal-Trim, Rear Window
10	125-9793	2	Link-Window	20	121-8441	2	Washer-Spacer

# Wire Harness Assembly



## Wire Harness Assembly (continued)

<i>Ref.</i>	<i>Part Number</i>	<i>Qty.</i>	<i>Description</i>
1	122-0730	1	Harness-Wire
2	92-2641	1	Block-Fuse
3	109355	1	Fuse-Blade, 15 Amp

# Attachments and Accessories

## For 07142 Cab Kit Workman GTX Utility Vehicle

Product Name	Model/Part
Door Kit.....	07150
Exterior Mirror Kit.....	130-5448
Interior Mirror Kit.....	130-5449
Beacon Kit .....	130-5484
Work Light Kit .....	130-5485
Windshield Washer Fluid Kit, 2015 and after Workman MD/HD Series Utility Vehicle .....	130-5615
Power Converter Kit.....	133-0959
Wide Angle Mirror Kit.....	133-1038

**Notes:**

**Notes:**

**Notes:**



**Count on it.**