



# Utility Van Box

## Workman® GTX Series Utility Vehicle

Model No. 07440

### Installation Instructions

**Important:** You cannot install the Utility Van Box on Lifted (LT) Models or a machine equipped with Lift Kit Model 07414.

You must install these kits with the Utility Van Box:

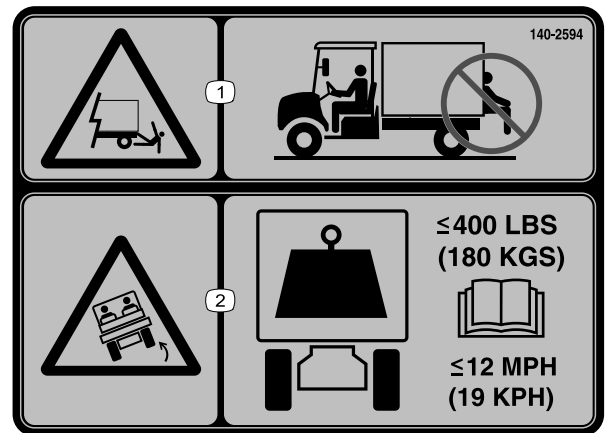
- Canopy or Cab Kit
  - 07921 — 2 Person Canopy Kit
  - 07922 — 4 Person Canopy Kit or
  - 07142 — Cab Kit
- Door Mount Mirror Kit — Part No. 136-1997
- Backup Alarm Kit
  - 133-3018 — 12V Reverse Alarm Kit (Gas Machines) or
  - 131-8549 — 48V Reverse Alarm Kit (Electric Machines)

## Safety

### Safety and Instructional Decals



Safety decals and instructions are easily visible to the operator and are located near any area of potential danger. Replace any decal that is damaged or missing.



decal140-2594

**140-2594**

1. Falling hazard—do not carry passengers.
2. Tipping hazard—the maximum carrying capacity is 180 kg (400 lb); read the *Operator's Manual*; do not exceed 19 km/h (12 mph).



# Installation

## Loose Parts

Use the chart below to verify that all parts have been shipped.

Procedure	Description	Qty.	Use
<b>1</b>	No parts required	–	Prepare the machine.
<b>2</b>	No parts required	–	Remove the cargo bed.
<b>3</b>	Clutch spacer	1	Reduce the top speed.
<b>4</b>	Utility van box Flange-head bolt (1/2 x 1-1/4 inches) Flange nut (1/2 inch)	1 2 2	Install the utility van box.
<b>5</b>	Canopy or cab kit — 07921, 07922, or 07142 (sold separately)	1	Install the canopy or cab kit (sold separately).
<b>6</b>	Door Mount Mirror Kit — Part No. 136-1997(sold separately)	1	Install the door mount mirror kit (sold separately).
<b>7</b>	Backup Alarm Kit — Part No. 133-3018 for gas machines or 131-8549 for electric machines (sold separately).	1	Install the backup alarm kit (sold separately).

**Important:** Use 2 people when raising the utility van box onto the machine frame.

# 1

## Preparing the Machine

No Parts Required

### Procedure

1. Park the machine on a level surface.
2. Engage the parking brake.
3. Shut off the machine and remove the key.

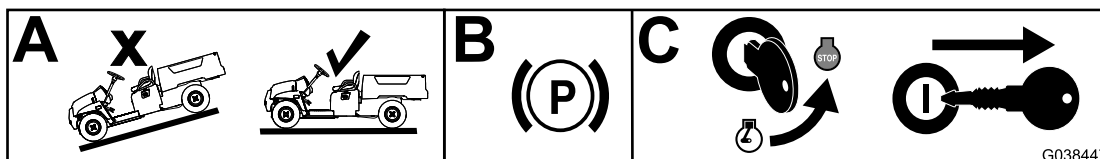


Figure 1

g038447

# 2

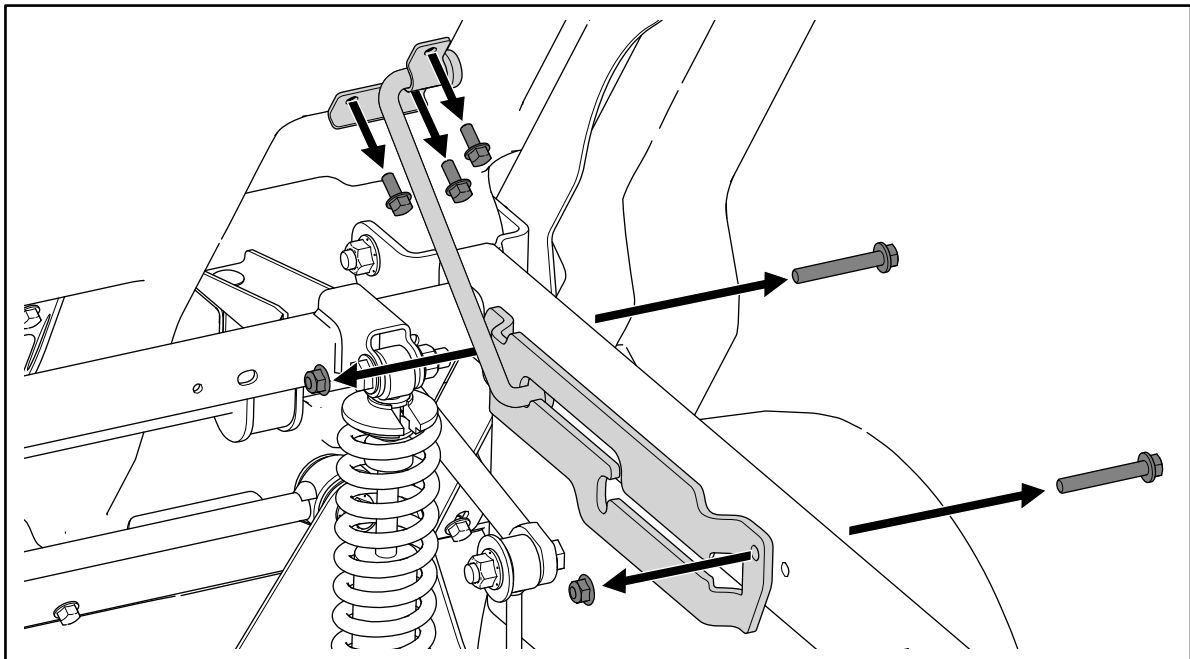
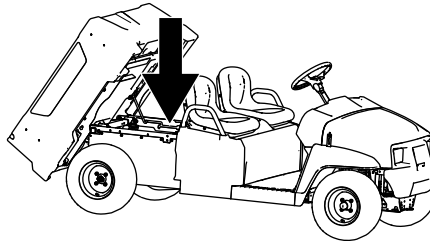
## Removing the Cargo Bed

No Parts Required

### Procedure

1. Using an overhead hoist, raise the cargo bed.
2. **If applicable**, remove the 2 bolts (3/8 x 2-1/2 inches), 2 flange nuts (3/8 inch), and 3 bolts (5/16 x 3/4 inch) from the prop rod assembly, and remove the prop rod assembly ([Figure 2](#)).

**Note:** Retain the hardware if you want to install the plastic cargo bed in the future.



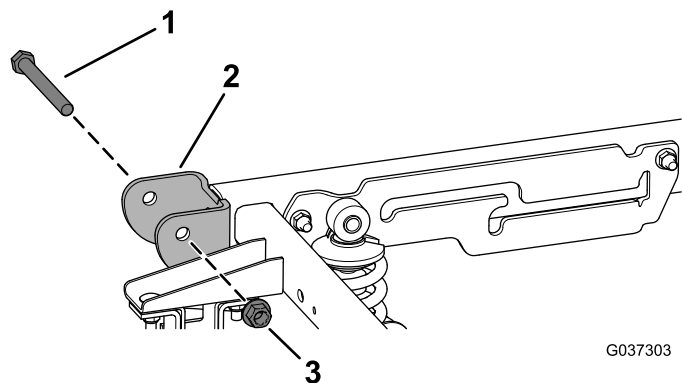
g036807

Figure 2

g036807

3. Remove the 2 pivot bolts (1/2 x 4-1/2 inches) and 2 locknuts (1/2 inch) from the pivot bracket located at the rear of the machine ([Figure 3](#)).

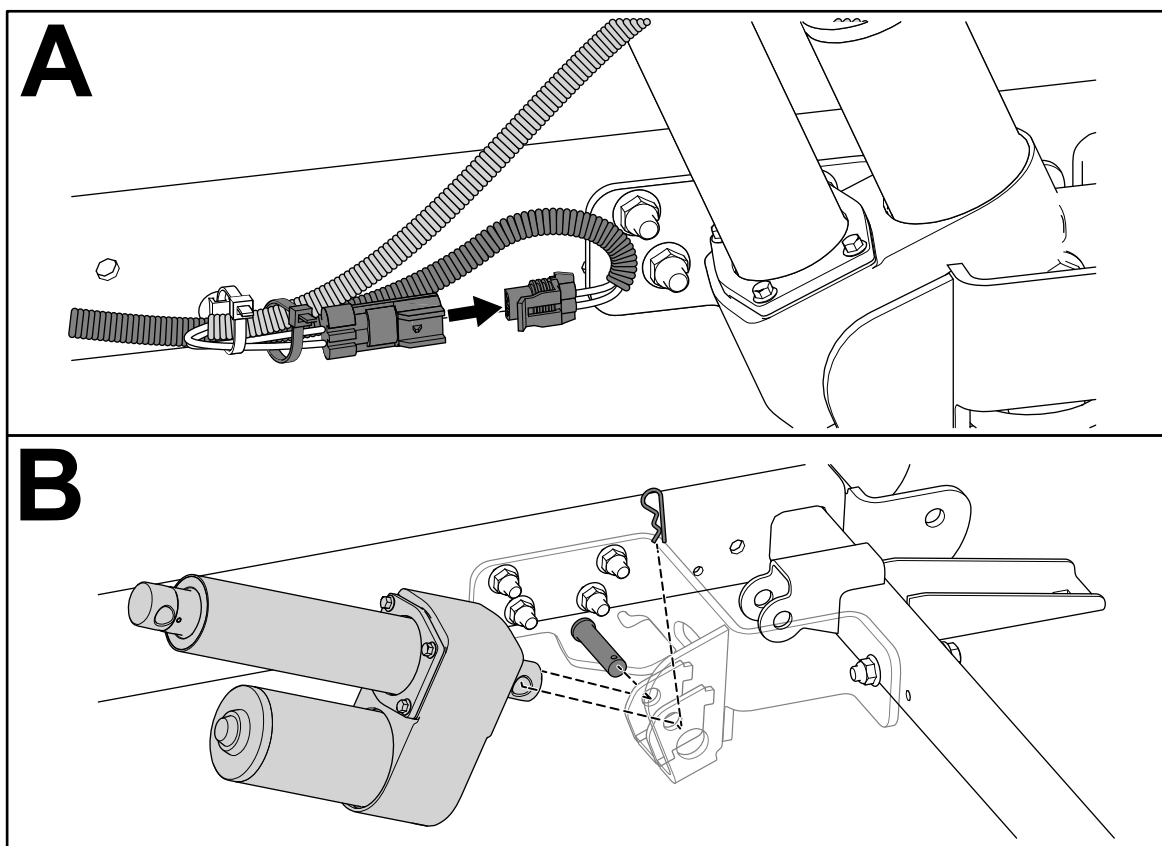
**Note:** Retain the hardware if you want to install the plastic cargo bed in the future.



**Figure 3**

1. Pivot bolt (1/2 x 4-1/2 inches)
2. Pivot bracket
3. Locknut (1/2 inch)

4. Release the cargo-bed lever and remove the cargo bed using an overhead hoist.
5. **If applicable**, remove the electric lift cylinder as shown in [Figure 4](#).



**Figure 4**

- Remove the 2 latches, 4 flange-head bolts (3/8 x 2-1/2 inches), and 4 flange nuts (3/8 inch) from the left and right frame tubes ([Figure 5](#)).

Retain the fasteners for installation in [4 Installing the Utility Van Box \(page 6\)](#).

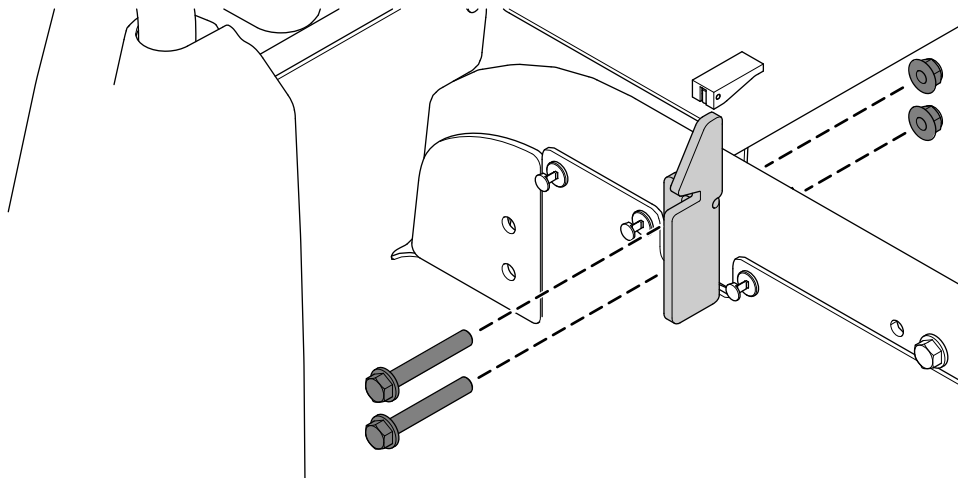


Figure 5

g307180

# 3

## Reducing the Top Speed

Parts needed for this procedure:

1	Clutch spacer
---	---------------

## Procedure

### ⚠ CAUTION

The dust in the clutch will become airborne and could damage your eyes or you could inhale it, causing breathing difficulties.

**Wear safety goggles and a dust mask or other eye and respiratory protection when performing this procedure.**

- Remove the bolts securing the primary clutch cover as shown in [Figure 6](#).

**Important:** Use caution when removing the clutch cover; the spring is under compression.

**Important:** Take note of the X orientation on the clutch covers and clutch assemblies for later installation.

- Remove the spring.
- Install the clutch spacer to reduce the top speed to 19 kph (12 mph).

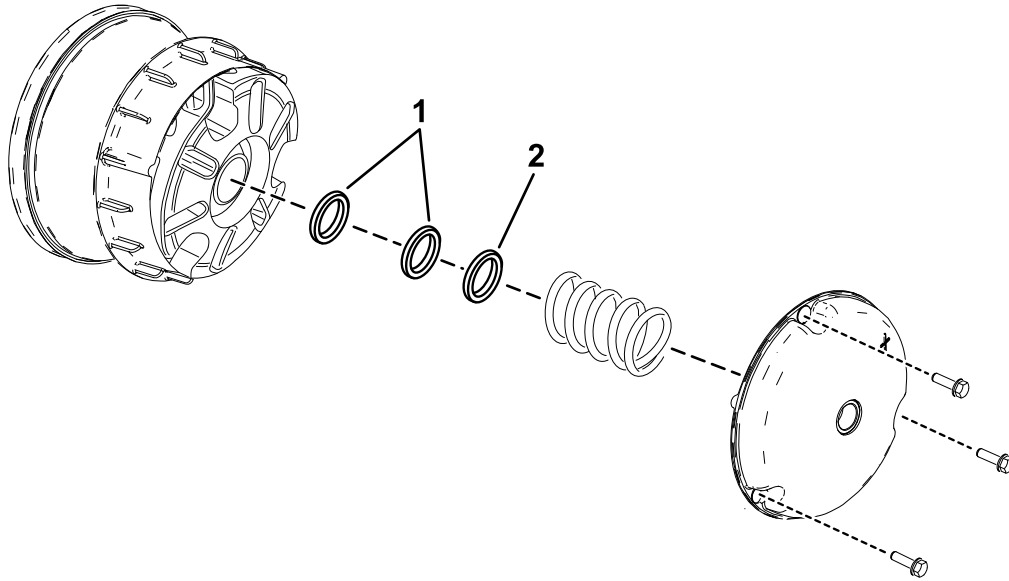
**Important:** Do not operate the machine without at least 3 clutch spacers in place.

Spacers	Top Speed
2 (standard)	26 kph (16 mph)—standard
3	19 kph (12 mph)

- Install the spring and clutch cover.

**Important:** Ensure that the X is placed back in the original location.

5. Torque the bolts to 179 to 228 N·m (132 to 168 in-lb).



g307181

**Figure 6**

1. Existing clutch spacers

2. New clutch spacer

# 4

## Installing the Utility Van Box

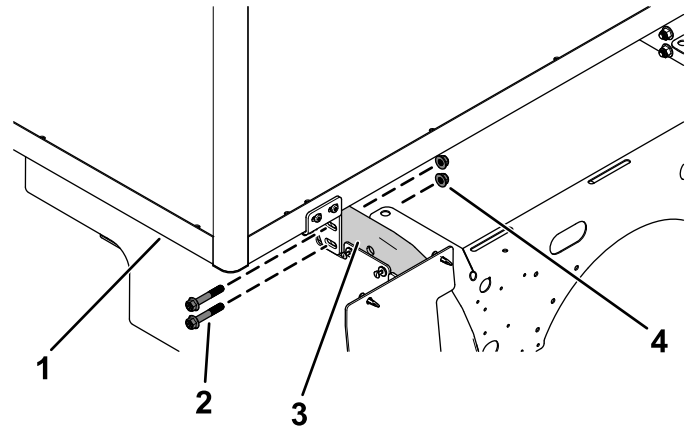
**Parts needed for this procedure:**

1	Utility van box
2	Flange-head bolt (1/2 x 1-1/4 inches)
2	Flange nut (1/2 inch)

## Procedure

**Important:** Use 2 people when raising the utility van box onto the machine frame.

1. Secure the front of the utility van box to the front of the frame tubes using the previously removed 2 flange-head bolts (3/8 x 2-1/2 inches) and 2 flange nuts (3/8 inch) on each side (Figure 7).



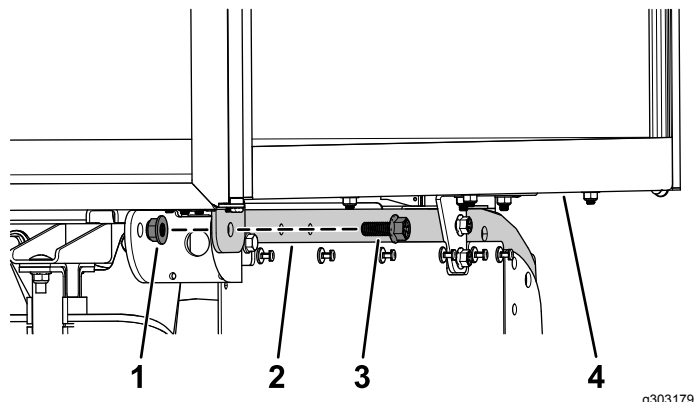
g303178

**Figure 7**

1. Utility van box
2. Flange-head bolt (3/8 x 2-1/2 inches)
3. Front of the frame tubes
4. Flange nut (3/8 inch)

2. Torque the flange nuts (3/8 inch) to 37 to 45 N·m (27 to 33 ft-lb).

3. Secure the rear of the utility van box to the rear of the frame tubes using a flange-head bolt (1/2 x 1-1/4 inches) and a flange nut (1/2 inch) on each side ([Figure 8](#)).



**Figure 8**

- |                            |  |
|----------------------------|--|
| 1. Flange nut (1/2 inch)   | 3. Flange-head bolt (1/2 x 1-1/4 inches) |
| 2. Rear of the frame tubes | 4. Utility van box                       |

4. Torque the flange nuts (1/2 inch) to 92 to 112 N·m (67.5 to 82.5 ft-lb).

## 5

### Installing the Canopy or Cab Kit

**Parts needed for this procedure:**

1	Canopy or cab kit — 07921, 07922, or 07142 (sold separately)
---	--

### Procedure

Install the Canopy or Cab Kit; refer to the *Installation Instructions* for the kit.

## 6

### Installing the Door Mount Mirror Kit

**Parts needed for this procedure:**

1	Door Mount Mirror Kit — Part No. 136-1997(sold separately)
---	--

### Procedure

Install the Door Mount Mirror Kit; refer to the Door Mount Mirror Kit *Installation Instructions*.

## 7

### Installing the Backup Alarm Kit

**Parts needed for this procedure:**

1	Backup Alarm Kit — Part No. 133-3018 for gas machines or 131-8549 for electric machines (sold separately).
---	--

### Procedure

Install the Backup Alarm Kit; refer to the Backup Alarm Kit *Installation Instructions*.

# Declaration of Incorporation

Model No.	Serial No.	Product Description	Invoice Description	General Description	Directive
07440 with 07921, 07922, or 07142, and 136-1997, and 133-3018 or 131-8549	—	Utility Van Box, Workman GTX Series Utility Vehicle	VAN BOX, WORKMAN GTX	Utility Vehicle	2006/42/EC

Relevant technical documentation has been compiled as required per Part B of Annex VII of 2006/42/EC.

We will undertake to transmit, in response to requests by national authorities, relevant information on this partly completed machinery. The method of transmission shall be electronic transmittal.

This machinery shall not be put into service until incorporated into approved Toro models as indicated on the associated Declaration of Conformity and in accordance with all instructions, whereby it can be declared in conformity with all relevant Directives.

Certified:



John Heckel  
Engineering Director  
8111 Lyndale Ave. South  
Bloomington, MN 55420, USA  
March 26, 2020

Authorized Representative:

Marcel Dutrieux  
Manager European Product Integrity  
Toro Europe NV  
Nijverheidsstraat 5  
2260 Oevel  
Belgium