



## Windrower Attachment

Model No. 09731

Model No. 09732

### Parts Catalog

---

#### Ordering Replacement Parts

To order replacement parts, please supply: the part number, the quantity, and the description of each part desired.

#### Understanding Reference Numbers

Each identified part in an illustration has a reference number. The reference number for a part also appears in the parts list, along with other information about the part.

This catalog uses two special reference number formats, one to indicate parts in a service assembly and another to indicate the quantity of a given part in an illustration.

#### Service Assembly Reference Numbers

Parts in service assemblies have reference numbers in the form **a:b**. The **a** represents the reference number of the entire service assembly and the **b** represents a sequential number unique to each part within the service assembly.

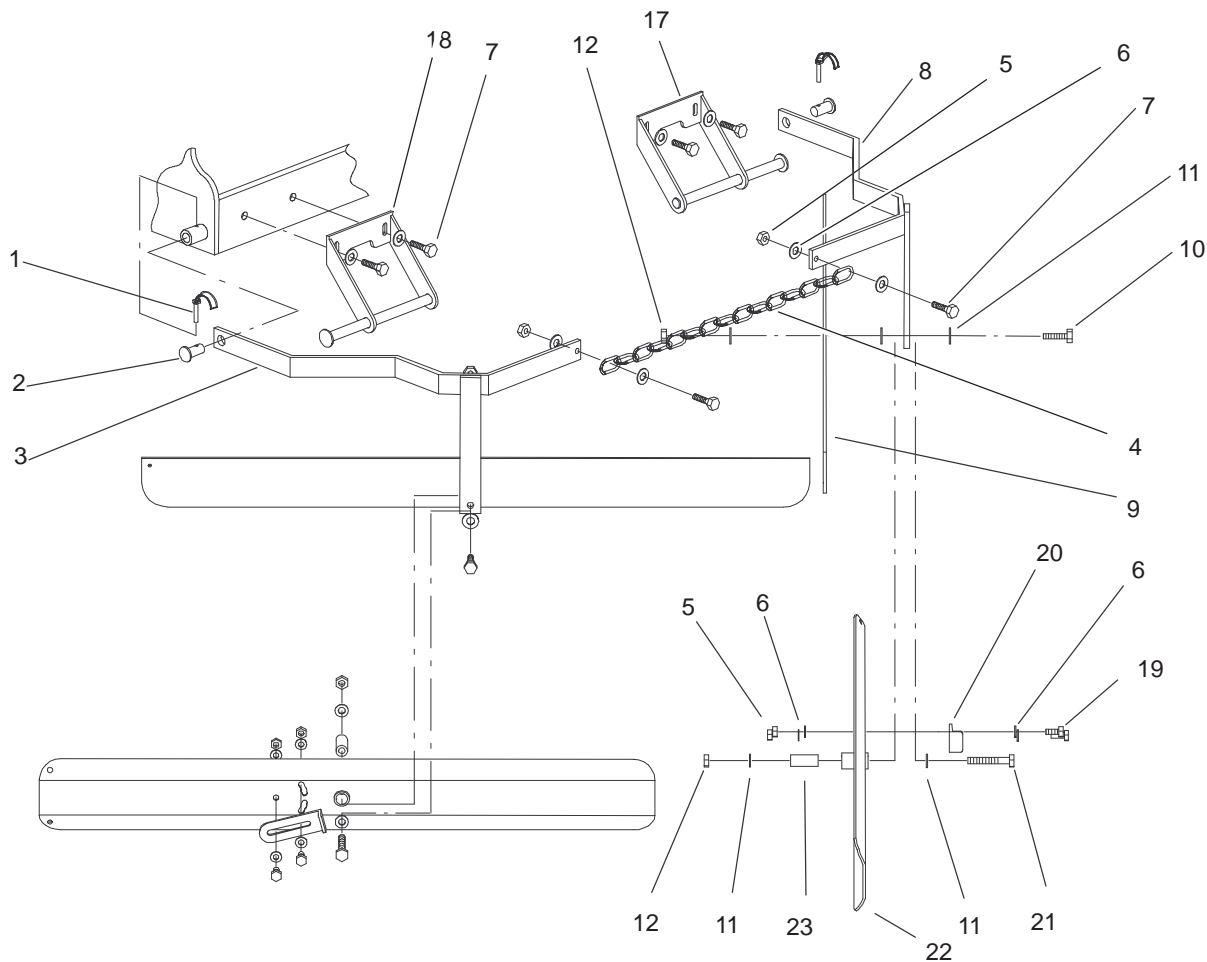
For example, a wheel assembly might be identified by reference number **6**, the tire by **6:1**, the valve by **6:2**, and the wheel by **6:3**. When you order the assembly identified by reference number **6**, you receive all parts identified by reference numbers **6:1**, **6:2**, and **6:3**. However, you may also order any part individually.

Reference numbers of this type appear in illustrations and in part lists.

#### Reference Numbers Indicating Quantity

In an illustration, if a reference number indicates more than one part, the reference number has the form **nX y**. The **n** represents the quantity of the part, the **X** is the multiplication symbol, and the **y** represents the reference number.

For example, in an illustration, the reference number **2X 37** means that two of the parts identified by reference number **37** are indicated.



Sheet No.:0

## Windrower Attachment Assembly

Ref. No.	Part No.	Qty.	Description
1	100-5408	2	Pin-Lynch
2	100-5409	2	Pin-Windrow
3	100-5404-03	1	Windrow Arm ASM, LH (only on: 09731)
3	100-5405-03	1	Windrow Arm ASM, LH (only on: 09732)
4	100-5411	1	Chain-Windrow (only on: 09732)
4	100-5410	1	Chain-Windrow (only on: 09731)
5	33025-00	6	Nut-Lock, NI
6	33095-00	12	Washer-Flat
7	33115-035	6	Screw-HH
8	100-5407-03	1	Windrow Arm ASM, RH (only on: 09732)
8	100-5406-03	1	Windrow Arm ASM, RH (only on: 09731)
✓9	100-5412-03	2	Plate-Windrow (only on: 09731)
✓9	100-5413-03	2	Plate-Windrow (only on: 09732)
✓10	33116-045	2	Screw-HH
11	33096-00	6	Washer-Flat
12	33026-00	2	Nut-Lock, NI
17	100-3698	1	RH-Support
18	100-3697	1	LH-Support

Ref. No.	Part No.	Qty.	Description
19	33115-025	4	Screw-HH
20	104-0959	2	Stop-Windrow
21	33116-090	2	Screw-HH
22	104-0967-03	2	Windrow Plate ASM (only on: 09731)
22	104-0955-03	2	Windrow Plate ASM (only on: 09732)
23	104-0958	2	Spacer-Windrow

✓ Used On Models Previous To 2000