



## 37" Soft Bag Kit

Floating Deck Mid-Size Mower without Mounting Plate, 4 bu.

Part No. 30129—21000001 and Up

**INSTALLATION  
INSTRUCTIONS**

### Loose Parts

**Note:** Use the chart below to identify parts for assembly.

DESCRIPTION	QTY.	USE
Exhaust elbow	1	Install Exhaust Elbow
Clamp	1	
Bagger frame	1	Mount bagger frame
Screws 3/8 x 1-1/2 in.	2	
Spacers	2	
Screws 3/8 x 1-1/4 in.	1	
Bagger frame tubes	1	
Chute assembly	1	Install chute, duct and bag assembly
Bag and duct assembly	1	
Installation Instructions	1	Read before installing kit

### Install Exhaust Elbow

**IMPORTANT:** To protect bag from engine exhaust, all mowers with mufflers mounted on right side of engine must install exhaust elbow.

⚠
CAUTION
⚠

**POTENTIAL HAZARD**

- Muffler and engine surface become hot when mower is in operation.

**WHAT CAN HAPPEN**

- Contact with hot muffler surface could cause a burn.

**HOW TO AVOID THE HAZARD**

- Do not touch hot exhaust.
- Allow exhaust to cool before installing this kit.

1. Slide the clamp assembly over the exhaust outlet tube.

2. With the exhaust elbow outlet directed toward the front of the machine, fit the elbow over the exhaust outlet tube (Fig. 1).
3. Position the clamp over the slotted section of the elbow and tighten the clamp to secure the elbow to the tube.

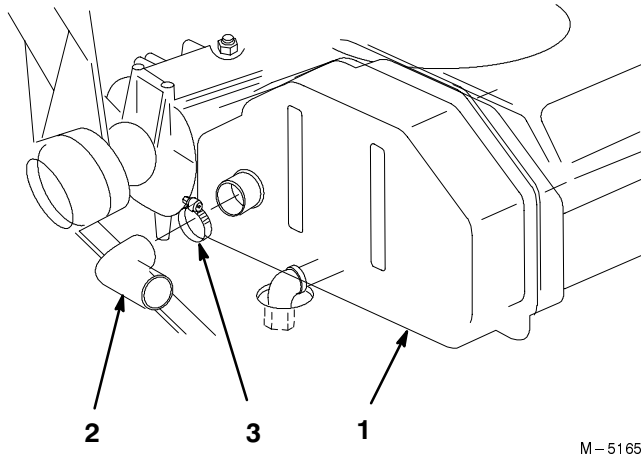


Figure 1

1. Muffer
2. Exhaust elbow
3. Clamp

## Mount Bagger Frame

1. Remove 2 capscrews and locknuts securing bottom of right hand support bracket to rear frame (Fig. 2).
2. Remove top flange head screw and flangenut securing right side of handle to frame (Fig. 2).

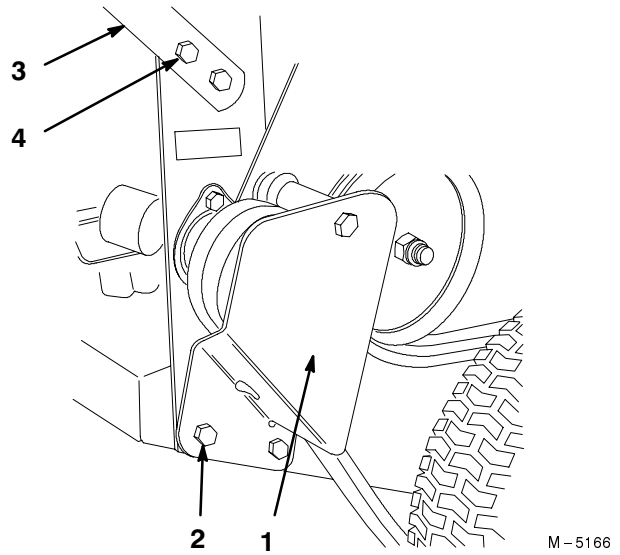


Figure 2

1. Right hand support bracket
2. Support bracket mounting screws
3. Handle
4. Top handle mounting screw

3. Remove 2 capscrews and locknuts securing right side of carrier frame to frame angle bracket. To simplify the removal of side capscrews, it may be necessary to loosen the top capscrews securing carrier frame to frame angle bracket (Fig. 3).

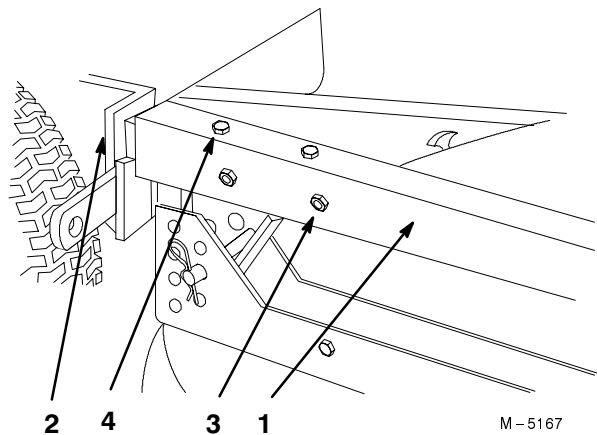


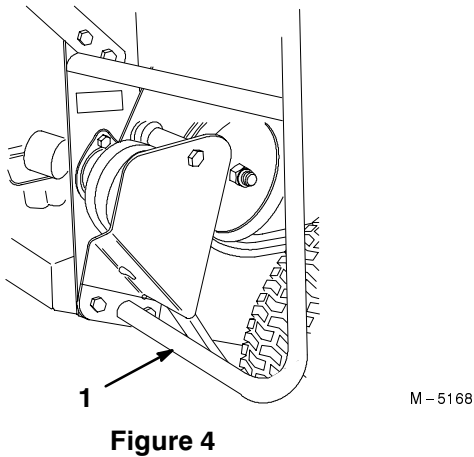
Figure 3

1. Carrier frame
2. Frame angle bracket
3. Side mounting screws
4. Top mounting screws

- Loosely secure rear of bagger frame to bottom of right-hand support bracket and rear frame with two 3/8 x 1-1/2in. capscrews and spacers (supplied in loose parts bag) and locknuts previously removed (Fig. 4).

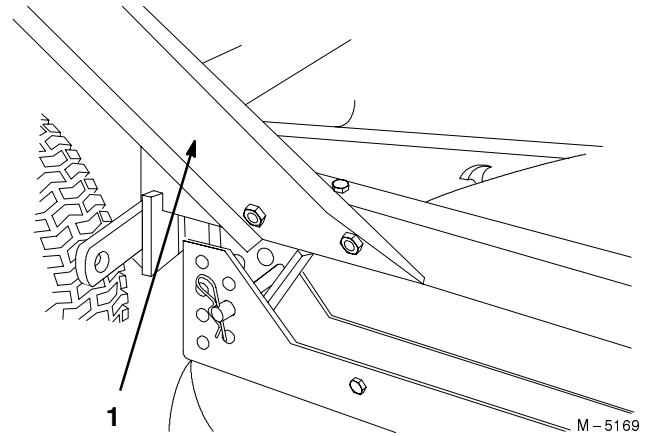
**Note:** If rear support bracket capscrew is also mounting a sulky hitch bracket, no spacer is required. A spacer is required only on the front capscrew.

- Loosely secure rear of bagger frame and handle to rear frame with large head capscrew (supplied in loose parts bag) and flangenut previously removed (Fig. 4).



1. Rear of bagger frame

- Secure front of bagger frame to carrier frame and frame angle bracket with 2 capscrews and locknuts previously removed (Fig. 5). Tighten all mounting screws and locknuts.

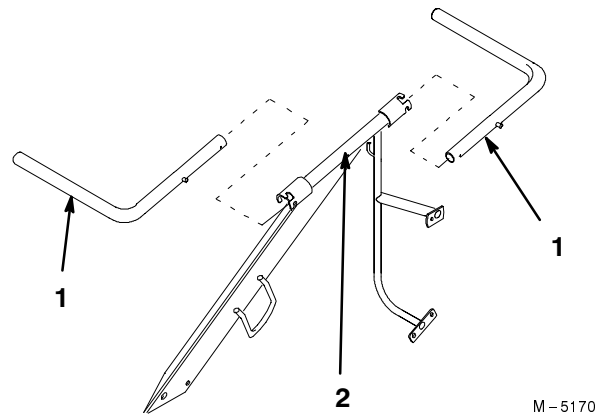


**Figure 5**

1. Front of bagger frame

- Insert a bagger frame tube into each end of bagger support and lock in slots (Fig. 6).

**Note:** When bagging is not required or when transporting machine, pivot and hook rear bagger frame tube into the down position and front tube toward the inside of the machine.



**Figure 6**

1. Bagger frame tube

2. Bagger support

## Install Chute, Duct and Bag Assembly

1. Remove two screws and lock nuts securing discharge cover to deck channel. Remove cover (Fig. 7).

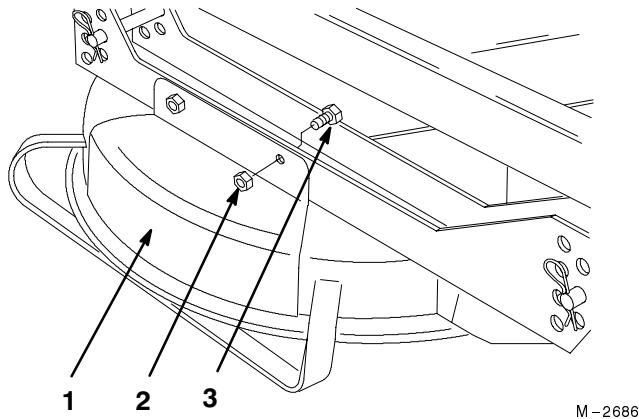


Figure 7

1. Discharge cover
2. Nut
3. Screw

2. Slide chute assembly onto deck lip while aligning mounting holes in deck channel (Fig. 8).
3. Secure chute assembly to deck channel with two screws and lock nuts previously securing discharge cover to deck channel.

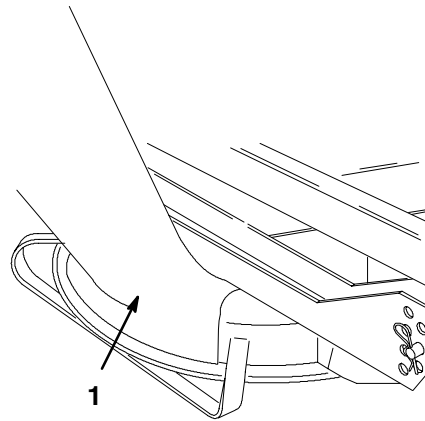


Figure 8

1. Chute assembly

**Note:** An extra set of chute mounting fasteners are supplied with bagging kit. Use these if mounting fasteners are misplaced.

4. Slide bag seams onto bagger frame tubes so duct is positioned to front of mower (Fig. 9).
5. Hook bag strap eyelet onto hook on bag frame.

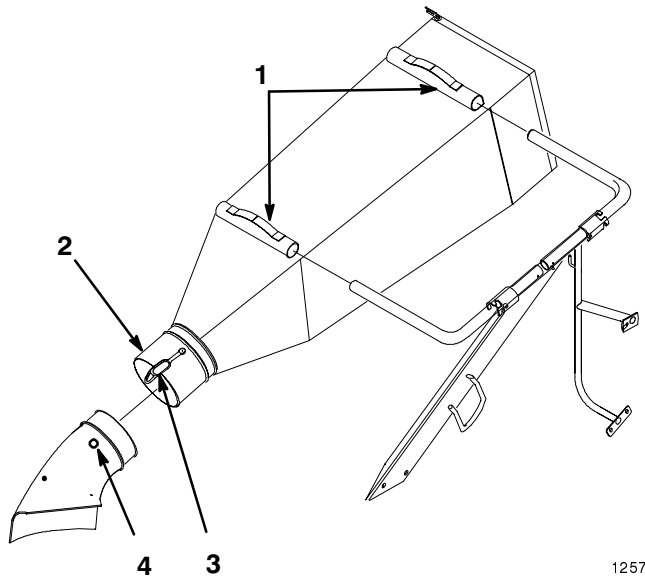


Figure 9

1. Bag seams
2. Duct
3. Duct retainer
4. Chute knob

6. Slide duct onto chute assembly, aligning duct retainer with chute knob. Hook retainer onto knob, securing assemblies (Fig. 9).
7. On rear of bag, draw up on string and secure with clip.
8. Loosen wing nut securing slot cover to top of deck (Fig. 10). Lift cover tongue out of slot, rotate cover 180°, pull cover outward to move deck door into the discharge position.
9. Insert cover tongue into slot and tighten wing nut.

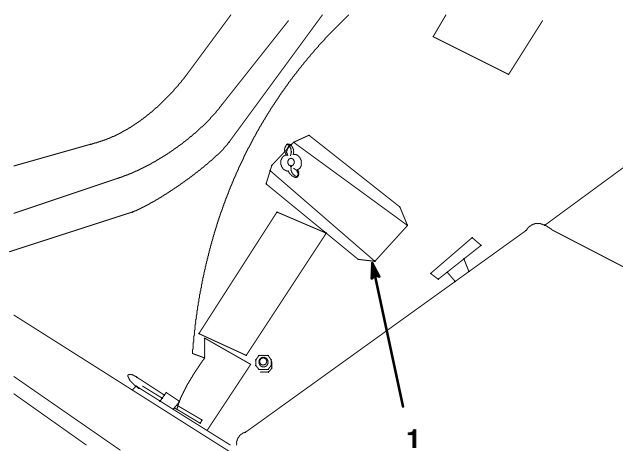


Figure 10

M-5172

1. Slot cover

! **DANGER** !

**POTENTIAL HAZARD**

- Grass clippings and other objects can be thrown from an open slot cover.

**WHAT CAN HAPPEN**

- Objects thrown with enough force could cause serious personal injury or death to operator or bystander.

**HOW TO AVOID THE HAZARD**

- Keep slot cover closed at all times.
- Open only when using bagging or side discharge chute.

## Operation

### To Empty Bagger

1. Shift transmission into NEUTRAL, apply parking brake (if so equipped), move deck engagement switch to OFF or release control bail and shut OFF engine.
2. Unhook duct retainer from chute knob. Slide duct off chute assembly.
3. Unhook bag strap eyelet from hook on bag frame.
4. Slide bag seams off bagger frame tubes.
5. Unhook clip from rear draw string and open bag.

### BAGGING TIPS

1. Cut grass when it is dry to avoid slippery footing and clogging mower housing or discharge area.

! **DANGER** !

**POTENTIAL HAZARD**

- Grass clippings and other objects can be thrown from an open discharge chute.

**WHAT CAN HAPPEN**

- Objects thrown with enough force could cause serious personal injury or death to operator or bystander.

**HOW TO AVOID THE HAZARD**

- Always install bagging attachment before starting the engine.
- Shut engine and blades off before removing or installing bag.
- Do not operate mower without the grass deflector, chute cover or entire grass catcher in place.

2. Cut long grass with height-of-cut at highest setting, then cut again using lower setting.
3. Empty the bag often to reduce the possibility of clogging the mower housing and discharge area.

4. Avoid bagging when mowing rough, uncertain areas.

 **WARNING**

**POTENTIAL HAZARD**

- **Unclogging bagger or performing maintenance while engine is running.**

**WHAT CAN HAPPEN**

- **Blade contact can seriously injure you.**

**HOW TO AVOID THE HAZARD**

- **Always shut off engine and remove ignition key from machine before unclogging bagger or performing maintenance.**
- **Remove spark plug wire from spark plug. Make sure wire does not accidentally contact spark plug.**



**DANGER**



**POTENTIAL HAZARD**

- **A worn grass bag could allow small stones and other similar debris to be thrown in operator's or bystander's direction.**

**WHAT CAN HAPPEN**

- **Thrown objects can cause serious personal injury or death to operator or bystanders.**

**HOW TO AVOID THE HAZARD**

- **Check the grass bag frequently. If it is damaged, install a new genuine TORO replacement bag.**



