



HD Vac Bagger Blower Cover

TITAN® Zero-Turn-Radius Riding Mower

Model No. 140-5036

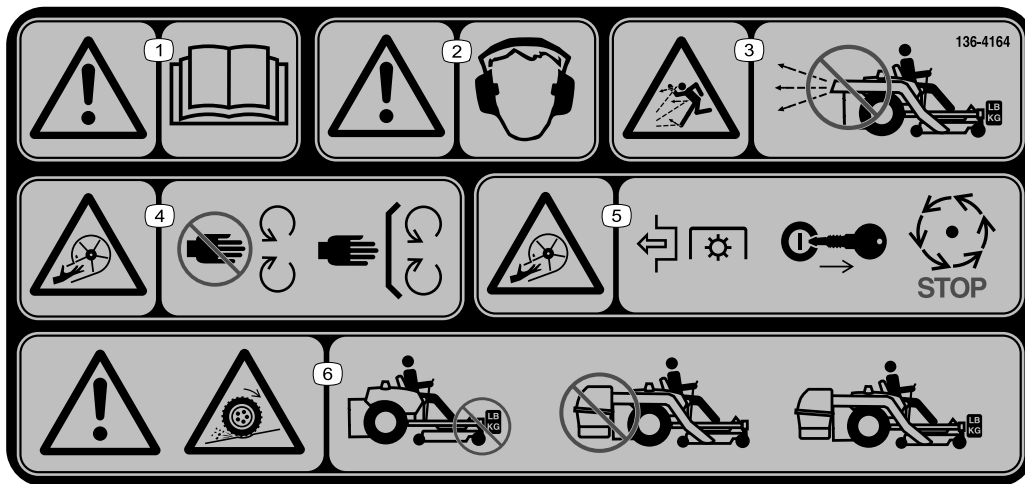
Installation Instructions

Safety

Safety and Instructional Decals



Safety decals and instructions are easily visible to the operator and are located near any area of potential danger. Replace any decal that is damaged or missing.



136-4164

decal136-4164

1. Warning—read the *Operator's Manual*.
2. Warning—hearing protection must be worn.
3. Thrown object hazard—do not operate the blower without the entire system installed and latched.
4. Cutting/dismemberment hazard, impeller—keep away from moving parts; keep all guards and covers in place.
5. Cutting/dismemberment hazard, impeller—disengage the PTO, remove the key, and wait for all moving parts to stop.
6. Warning; loss of traction—do not operate with only counterbalance weights installed; do not operate with only E-Z Vac installed; operate only with both E-Z Vac and counterbalance weights installed.



Installation

Loose Parts

Use the chart below to verify that all parts have been shipped.

Procedure	Description	Qty.	Use
1	No parts required	–	Prepare the machine.
2	No parts required	–	Remove the existing cover.
3	Cover Hex-head bolt (1/4 x 5/8 inch) Locknut (1/4 inch)	1 11 1	Install the new cover.

1

Preparing the Machine

No Parts Required

Procedure

1. Park the machine on a level surface.
2. Disengage the blade-control switch.
3. Engage the parking brake.
4. Move the motion-control levers outward to the NEUTRAL-LOCK position.
5. Shut off the engine and remove the key.

2

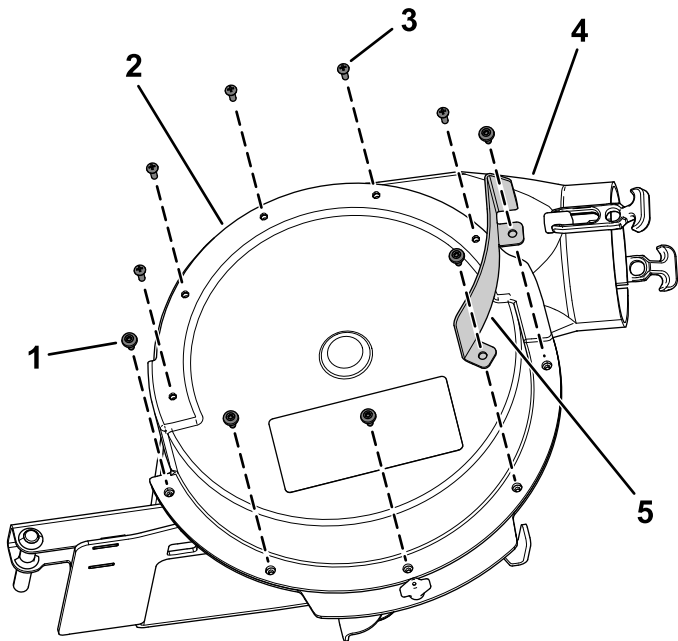
Removing the Existing Cover

No Parts Required

Procedure

Remove the existing 5 shoulder screws, 5 Phillips-head screws, blower guard, and cover from the blower assembly ([Figure 1](#)).

Note: You can discard these parts.



g321826

Figure 1

- | | |
|------------------------|--------------------|
| 1. Shoulder screw | 4. Blower assembly |
| 2. Existing cover | 5. Blower guard |
| 3. Phillips-head screw | |

3

Installing the New Cover

Parts needed for this procedure:

1	Cover
11	Hex-head bolt (1/4 x 5/8 inch)
1	Locknut (1/4 inch)

Procedure

1. Align the new cover with the holes on the blower assembly.
2. Using the cover as the template, drill 1 hole (6.4 mm or 1/4 inch) into the blower chute (Figure 2).

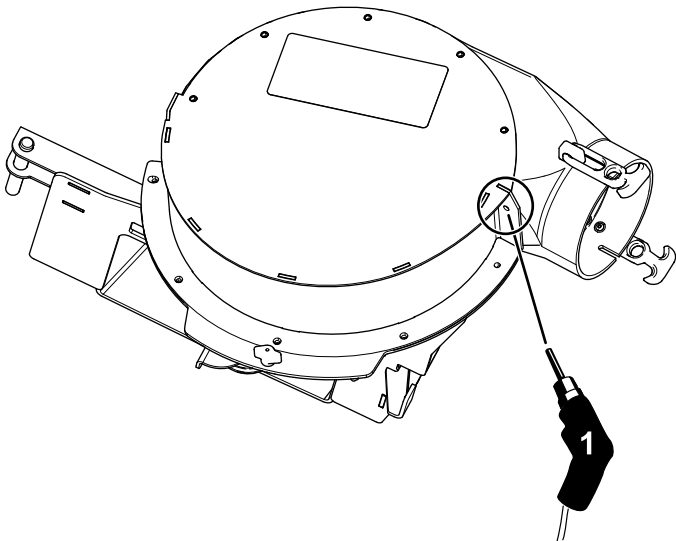


Figure 2

1. Drill a hole (6.4 mm or 1/4 inch) here.

3. Secure the cover to the blower assembly using the 11 hex-head bolts (1/4 x 5/8 inch) and 1 locknut (1/4 inch) as shown in Figure 3.

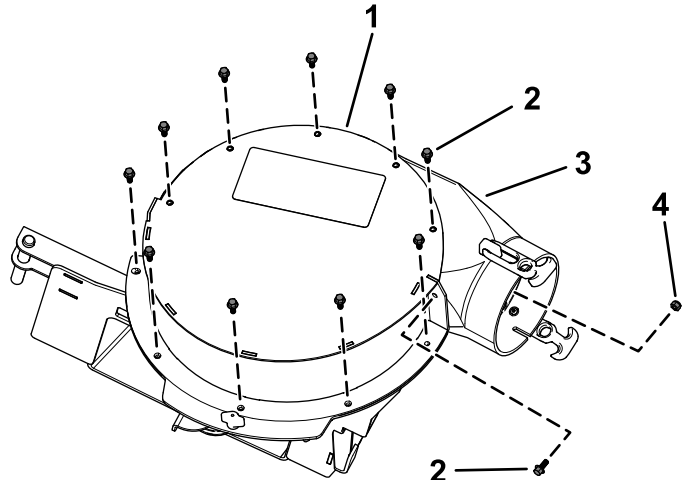


Figure 3

1. New cover
2. Hex-head bolt (1/4 x 5/8 inch)
3. Blower assembly
4. Locknut (1/4 inch)