



Blower Assembly Kit
for 42" and 48" Vac Baggers

Part No. 104-2486

**INSTALLATION
INSTRUCTIONS**

Loose Parts

Note: Use the chart below to identify parts for assembly.

DESCRIPTION	QTY.	USE
Blower Assembly	1	Install Blower Assembly

**Remove the Blower from the
Mower**

1. Open the latch and swing the blower out away from the mower, remove the blower belt from the mower spindle pulley (Fig. 1).

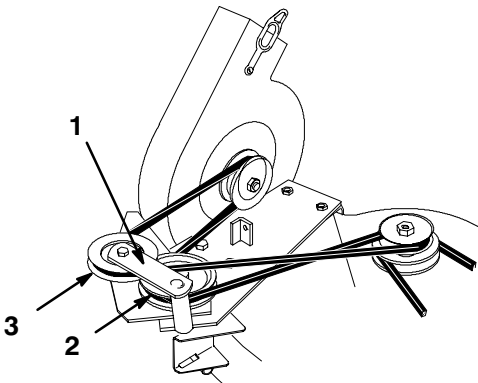


Figure 1

1. Idler pulley bracket and pulley
2. Top side of belt against bottom pulley
3. V-side of belt into top pulley

2. Remove the blower by lifting the pivot pin out of the pivot support (Fig. 2).

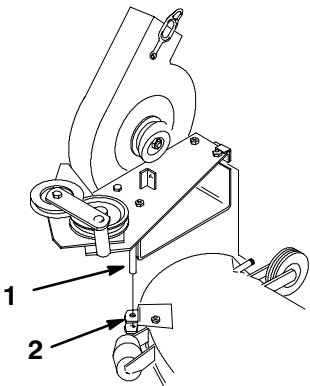


Figure 2

1. Pivot pin
2. Pivot support

**Remove Blower Mounting
Plate and Latch**

1. Remove the blower mounting plate from existing blower as shown in figure 3.

Note: Save blower mounting plate and all existing hardware. This will be installed onto new blower assembly.

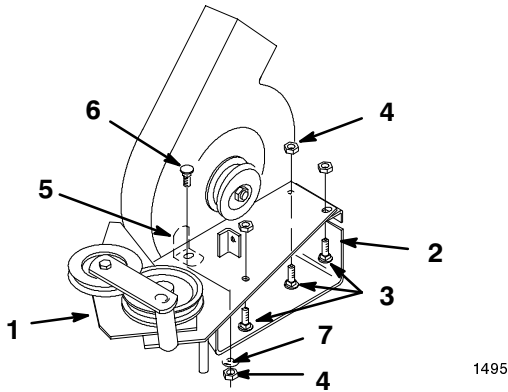


Figure 3

- | | |
|--------------------------------------|--|
| 1. Blower mounting plate | 5. L-bracket |
| 2. Blower assembly | 6. Carriage bolt 5/16 x 7/8" (22 mm) (down from top) |
| 3. Carriage bolt 5/16 x 3/4" (19 mm) | 7. Washer 5/16" |
| 4. Flange nut 5/16" | |

2. Remove the blower latch from existing blower as shown in figure 4.

Note: Save blower latch and all existing hardware. This will be installed onto new blower assembly.

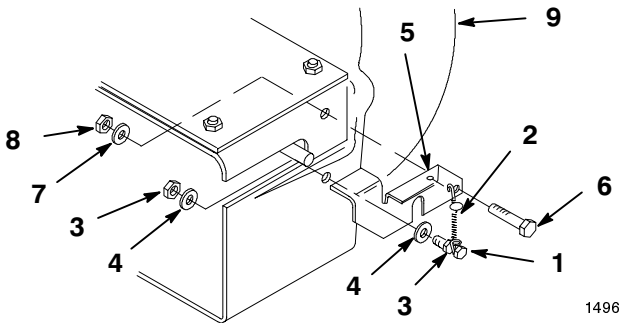


Figure 4

- | | |
|-----------------------------|----------------------------|
| 1. Screw #10 x 3/4" (19 mm) | 6. Bolt 1/4 x 3/4" (19 mm) |
| 2. Spring | 7. Washer 1/4" |
| 3. Nut #10 | 8. Lock nut 1/4" |
| 4. Washer #10 | 9. Blower assembly |
| 5. Latch | |

Remove Rubber Latch

1. Remove the discharge rubber latch from blower housing as shown in figure 5.

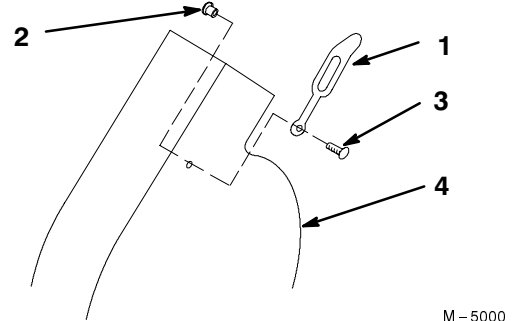


Figure 5

- | | |
|-----------------|-------------------|
| 1. Rubber Latch | 3. Fastener |
| 2. Interlock | 4. Blower Housing |

Install Blower Mounting Plate and Latch

1. Assemble blower mounting plate to blower with (3) 5/16 x 3/4" (19 mm) carriage bolts and 5/16" flange nuts (Fig. 6).
2. In the front inside hole of the blower insert a 5/16 x 7/8" (22 mm) carriage head bolt, item 6 (Fig. 6).

Note: This carriage bolt must be installed down through the plate and blower for proper belt clearance.

3. Inside the blower housing, slide the L-bracket over the bolt. Hold the L-bracket tight against the blower housing wall and secure with 5/16" washer and 5/16" flange nut (Fig. 6).

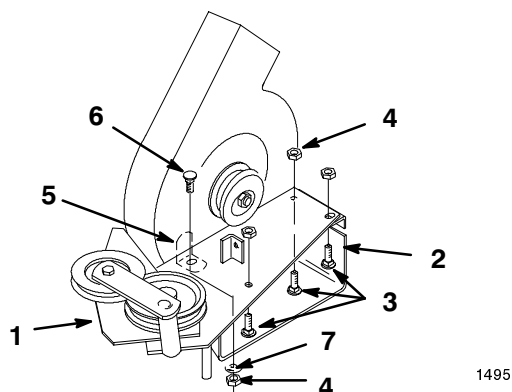


Figure 6

- | | |
|--------------------------------------|--|
| 1. Blower mounting plate | 5. L-bracket |
| 2. Blower assembly | 6. Carriage bolt 5/16 x 7/8" (22 mm) (down from top) |
| 3. Carriage bolt 5/16 x 3/4" (19 mm) | 7. Washer 5/16" |
| 4. Flange nut 5/16" | |

4. Install the long hook end of the tension spring and #10 nut onto a #10 x 3/4" (19 mm) screw. Thread the nut on within 1/8" from the head end of the screw, leaving enough room for the spring to rotate freely (Fig. 7).
5. Slide a #10 washer onto the screw and insert through the blower housing. Install a second #10 washer and #10 nut (Fig. 7). While holding the first nut, tighten the second so that the assembly is tight against the plastic housing.

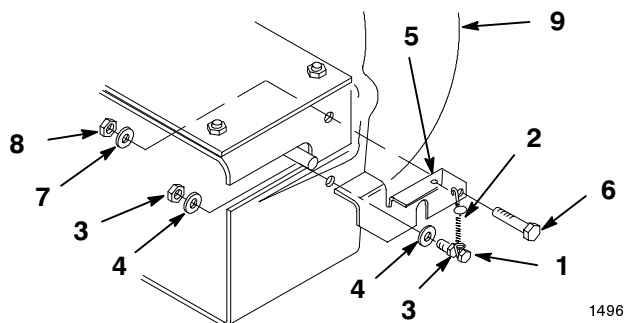


Figure 7

- | | |
|-----------------------------|----------------------------|
| 1. Screw #10 x 3/4" (19 mm) | 6. Bolt 1/4 x 3/4" (19 mm) |
| 2. Spring | 7. Washer 1/4" |
| 3. Nut #10 | 8. Lock nut 1/4" |
| 4. Washer #10 | 9. Blower assembly |
| 5. Latch | |

Install Rubber Latch

1. Install the discharge rubber latch onto new blower housing as shown in figure 8.

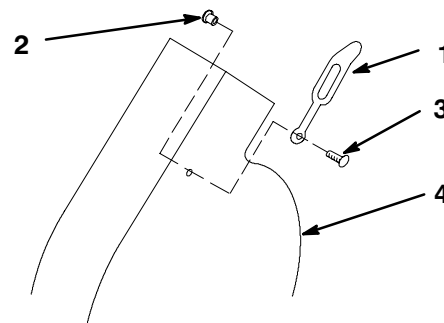


Figure 8

- | | |
|-----------------|-------------------|
| 1. Rubber Latch | 3. Fastener |
| 2. Interlock | 4. Blower Housing |

Mount the Blower

1. Insert pivot pin on blower into pivot support bracket on mower (Fig. 9).

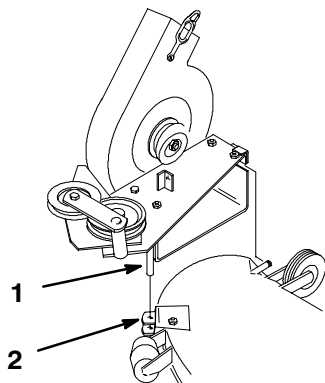


Figure 9

1. Pivot pin
2. Pivot support bracket

2. With the blower swung out in the open position, install the blower drive belt between the idler pulley bracket and pulley. Then loop the belt around the remaining pulleys (Fig. 10). Install the other end of the belt over the blower drive pulley on the spindle.
3. Check direction of blower rotation (Fig. 10).

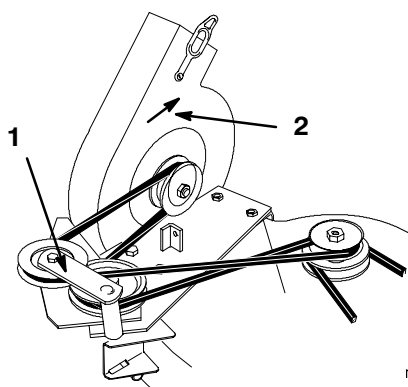


Figure 10

1. Idler pulley bracket and pulley
2. Rotation direction

4. With the belt installed, swing the blower toward the mower until the blower latch locks over the pin at the back of the mower (Fig. 11).

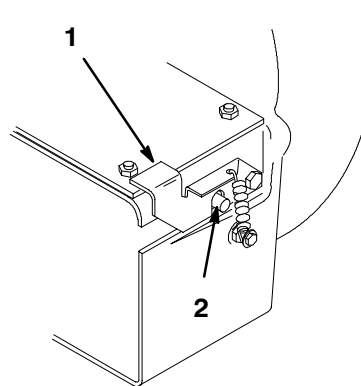


Figure 11

1. Blower latch
2. Pin

1840