



Super BlowerVac

Model No. 51587 – 200068462 and Up

Parts Catalog

Ordering Replacement Parts

To order replacement parts, please supply: the part number, the quantity, and the description of each part desired.

Understanding Reference Numbers

Each identified part in an illustration has a reference number. The reference number for a part also appears in the parts list, along with other information about the part.

This catalog uses two special reference number formats, one to indicate parts in a service assembly and another to indicate the quantity of a given part in an illustration.

Service Assembly Reference Numbers

Parts in service assemblies have reference numbers in the form **a:b**. The **a** represents the reference number of the entire service assembly and the **b** represents a sequential number unique to each part within the service assembly.

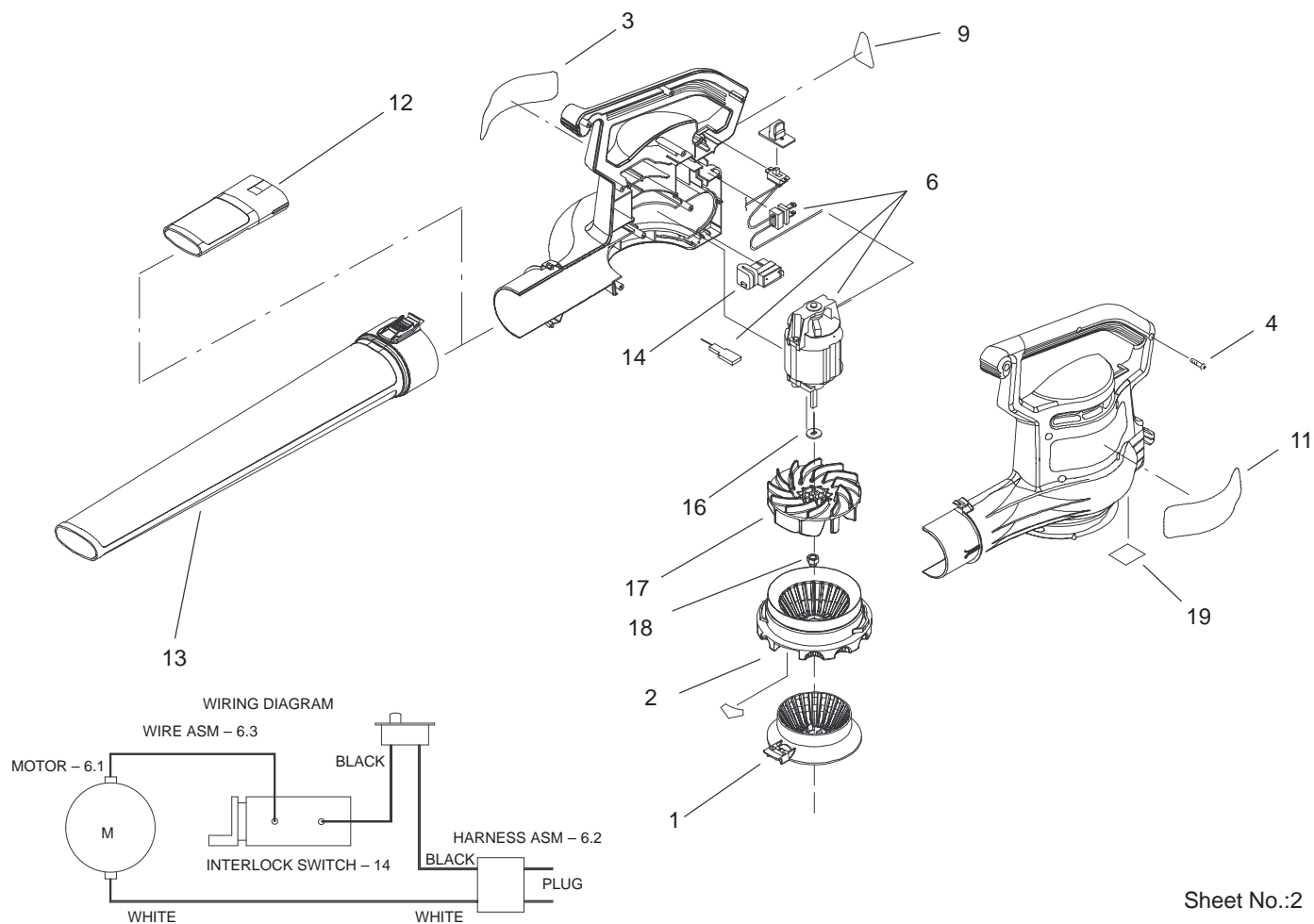
For example, a wheel assembly might be identified by reference number **6**, the tire by **6:1**, the valve by **6:2**, and the wheel by **6:3**. When you order the assembly identified by reference number **6**, you receive all parts identified by reference numbers **6:1**, **6:2**, and **6:3**. However, you may also order any part individually.

Reference numbers of this type appear in illustrations and in part lists.

Reference Numbers Indicating Quantity

In an illustration, if a reference number indicates more than one part, the reference number has the form **nX y**. The **n** represents the quantity of the part, the **X** is the multiplication symbol, and the **y** represents the reference number.

For example, in an illustration, the reference number **2X 37** means that two of the parts identified by reference number **37** are indicated.

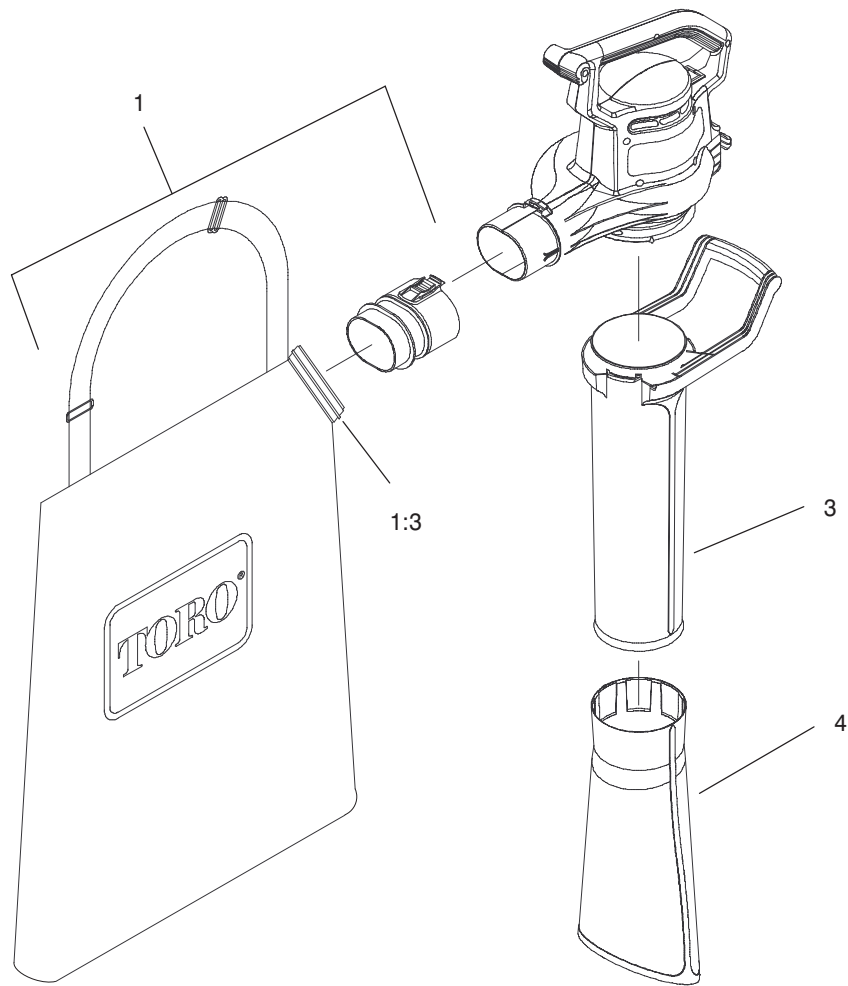


Sheet No.:2

BlowerVac Assembly

| Ref. No. | Part No. | Qty. | Description |
|----------|----------|------|-------------------------|
| 1 | 98-3155 | 1 | Choke – Air, Red |
| 2 | 100-9050 | 1 | ASM-Inlet Cover & Decal |
| 3 | 100-2462 | 1 | Decal – Warning |
| 4 | 94-4496 | 9 | Screw-PPH |
| 6 | 100-9095 | 1 | ASM-Motor & Harness |
| 9 | 95-5106 | 1 | Decal – Information |
| 11 | 93-0579 | 1 | Decal, Logo, Suprblwr |
| 12 | 98-3152 | 1 | Insert – Tube |
| 13 | 98-3151 | 1 | Tube-Blower |
| 14 | 95-3286 | 1 | Switch – Interlock |
| 16 | 93-0585 | 1 | Washer |
| 17 | 98-3150 | 1 | Impeller – Blower |
| 18 | 73-5380 | 1 | Nut-Hex |

| Ref. No. | Part No. | Qty. | Description |
|----------|----------|------|-------------|
| | | | |



Sheet No.:3

Vacuum Tube and Bag Assembly

| Ref. No. | Part No. | Qty. | Description |
|----------|----------|------|-------------------|
| 1 | 100-2474 | 1 | Bag ASM |
| 1:3 | 100-9064 | 1 | Tie-Cable |
| 3 | 93-0572 | 1 | Tube - Vac, Upper |
| 4 | 93-0573 | 1 | Tube - Vac, Lower |

| Ref. No. | Part No. | Qty. | Description |
|----------|----------|------|-------------|
| | | | |

