



## LAWN & GARDEN TRACTOR

MODEL NO. 72072-210000001 & UP  
 MODEL NO. 72107-210000001 & UP  
 MODEL NO. 72116-210000001 & UP

### SET UP INSTRUCTIONS

## Loose Parts

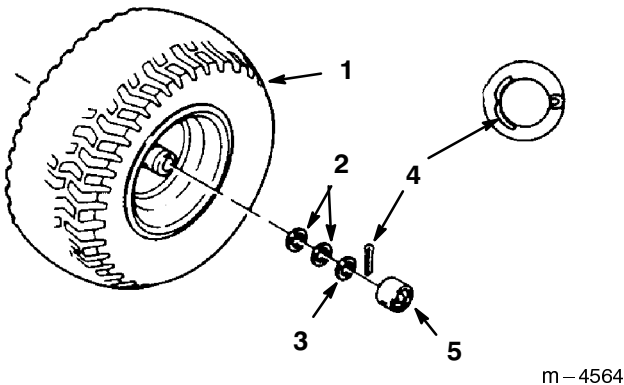
**Note:** Use the chart below to identify parts for assembly.

DESCRIPTION	QTY.	USE
Front Wheel	2	Install front wheels.
Flat Washer-large OD	2	
Shim Washer	4	
Dust Cover	2	
Cotter Pin	2	
Rear Wheel	2	Install rear wheels.
Wheel Bolt	10	
Steering Wheel	1	Install steering wheel.
Lock Washer 1/2"	1	
Nut 1/2"	1	
Logo Cover	1	
Seat	1	Install the seat.
Spacer-small ID	2	
Spacer-large ID	2	
Shoulder Bolt	2	
Knob	2	
Flat Washer	2	
Bolt 1/4-20 x 3/4"	2	Attach battery cables.
Wing Nut-plastic 1/4"	2	
Key	1	Use in ignition and "Key Choke" switches.
Operator's Manual	1	Read manual before operating tractor.

## Install Front Wheels

**Note:** If wheels are already installed, refer to Check Tire Pressure (below).

1. Slide wheel onto axle with valve stem in. (Fig. 1).
2. Wheel end play should be 0-.015" (0-.4 mm). Use shim washers (as required) and large OD flat washer for spacing on the axle. Insert cotter pin through the axle and bend the ends of the pin open (Fig. 1).
3. Push the dust cover (Fig. 1) onto the end of the axle so it snaps over washer.



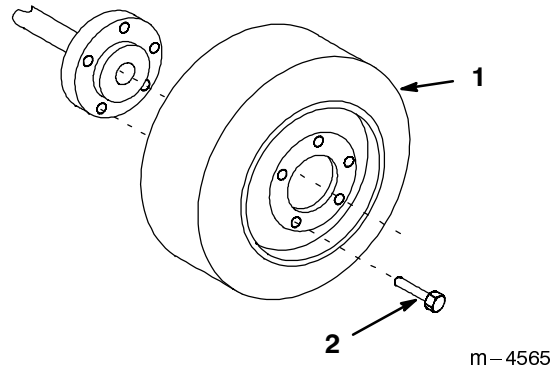
**Figure 1**

- |                               |                         |
|-------------------------------|-------------------------|
| 1. Wheel                      | 3. Large OD flat washer |
| 2. Shim washers (as required) | 4. Cotter pin           |
|                               | 5. Dust cover           |

4. Repeat steps 1-3 on opposite side.
5. Grease the wheel bearings.

## Install Rear Wheels

1. Install wheel onto axle with valve stem to the inside (Fig. 2).
2. Torque wheel bolts to 75-80 ft-lb (105-112 N·m).



**Figure 2**

- |          |                |
|----------|----------------|
| 1. Wheel | 2. Wheel bolts |
|----------|----------------|

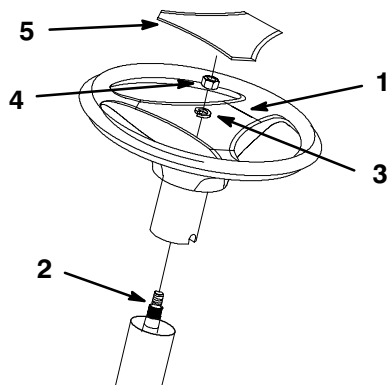
## Check Tire Pressure

Check front and rear tire pressure. See Operator's Manual for specification.

Pressure: 20 psi (138 kPa) front and rear.

## Install Steering Wheel

1. Position front wheels straight ahead.
2. Remove logo cover by releasing (3) latches from back side with screwdriver.
3. Line up center spoke toward the seat and position the steering wheel onto shaft spline (Fig. 3).
4. Secure steering wheel with lockwasher and nut (Fig. 3).
5. Torque steering wheel nut to 50 ft-lbs (37 N·m).
6. Snap logo cover into place (Fig. 3).



**Figure 3**

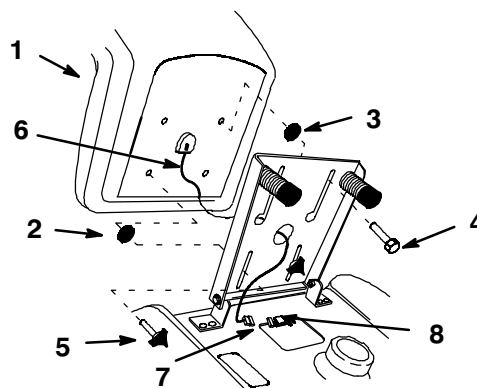
- |                 |               |
|-----------------|---------------|
| 1. Center spoke | 4. Nut        |
| 2. Shaft spline | 5. Logo cover |
| 3. Lock washer  |               |

2307

## Install Seat

**Note:** If the seat is already installed, proceed to Activate The Battery, page 4.

1. Install large ID spacer and shoulder bolts into rear holes of seat (Fig. 4).
2. Position the seat onto the seat base by inserting the two shoulder bolts through key hole openings at the end of both slots (Fig. 4).
3. Locate small ID spacer between seat and seat base, thread the knobs and flat washers into the front holes in the seat (Fig. 4). Adjust the seat and tighten the knobs.
4. Route seat switch wire and connector through center opening in the seat base. Push the seat switch connector fully into the wire harness connector (Fig. 4).
5. Secure the seat switch wire cable to the fender opening with wire clip (Fig. 4).



**Figure 4**

- |                         |                           |
|-------------------------|---------------------------|
| 1. Seat                 | 5. Knob and flat washer   |
| 2. Spacer-small ID      | 6. Wire and connector     |
| 3. Spacer-large ID      | 7. Wire harness connector |
| 4. Bolt and flat washer | 8. Wire clip              |

m-5081

## Activating the Battery

Bulk electrolyte with 1.265 specific gravity must be purchased from a local battery supply outlet.

### DANGER

#### POTENTIAL HAZARD

- **Battery electrolyte contains sulfuric acid which is a deadly poison and it causes severe burns.**

#### WHAT CAN HAPPEN

- **If you carelessly drink electrolyte you could die or if it gets onto your skin you will be burned.**

#### HOW TO AVOID THE HAZARD

- **Do not drink electrolyte and avoid contact with skin, eyes or clothing. Wear safety glasses to shield your eyes and rubber gloves to protect your hands.**
- **Fill the battery where clean water is always available for flushing the skin.**
- **Follow all instructions and comply with all safety messages on the electrolyte container.**

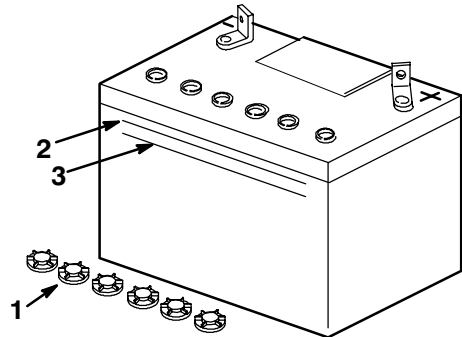
1. Remove the battery from the tractor.
2. Clean the top of the battery with a paper towel.

**Note:** Never fill the battery with electrolyte while the battery is installed in the tractor. Electrolyte could be spilled on other parts and cause corrosion.

3. Remove the vent caps from the battery (Fig. 5).
4. Slowly pour electrolyte into each battery cell until the level is up to the “UPPER” line (Fig. 5) on the battery case.

**IMPORTANT: Do not overfill the battery because electrolyte (sulfuric acid) can cause severe corrosion and damage to the chassis.**

5. Wait five to ten minutes after filling the battery cells. Add electrolyte, if necessary, until the electrolyte level is up to the “UPPER” line (Fig. 5) on the battery case.
6. Reinstall battery filler caps.



m-5004

**Figure 5**

1. Filler caps
2. UPPER line
3. LOWER line

## ! WARNING

### POTENTIAL HAZARD

- Charging battery produces gasses.

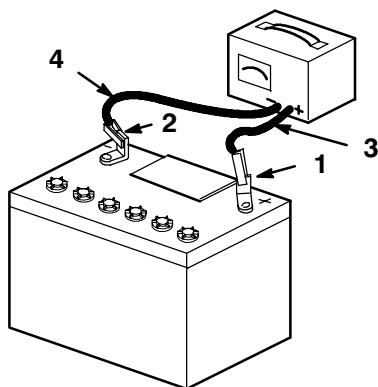
### WHAT CAN HAPPEN

- Battery gasses can explode.

### HOW TO AVOID THE HAZARD

- Do not smoke around battery and keep sparks and flames away from battery.

7. Make sure the vent caps are installed in battery. Charge battery for 10 to 15 minutes at 25 to 30 amps or 30 minutes at 4-6 amps.
8. When the battery is fully charged, unplug the charger from the electrical outlet, then disconnect the charger leads from the battery posts (Fig. 6).



m-4970

**Figure 6**

- |                          |                           |
|--------------------------|---------------------------|
| 1. Positive Battery Post | 3. Red (+) Charger Lead   |
| 2. Negative Battery Post | 4. Black (-) Charger Lead |

9. Install the battery in the tractor and connect the battery cables. (Refer to the Operator's Manual - Installing the Battery.)

**Note:** Do not run the tractor with the battery disconnected, electrical damage may occur.

## Check Engine Oil

**IMPORTANT:** The tractor is shipped with oil in the engine crankcase.

Check the oil level and add only enough oil to raise the level to the "FULL" mark on the dipstick.

**Note:** When checking oil, slide the dipstick fully into the filler tube, do not thread onto fill tube.

## Check Tractor Lubrication

Check tractor to ensure it is lubricated. Refer to the Operator's Manual, Greasing and Lubrication.

## Learn to Operate the Tractor

Read the Operation section in the Operator's Manual. Learn how to operate the tractor.

## Check Safety System

Refer to the Operator's Manual, Checking Safety System.



## CAUTION



### POTENTIAL HAZARD

- Safety interlock switches may be disconnected or damaged.

### WHAT CAN HAPPEN

- The machine could operate unexpectedly.
- Contact with moving parts may cause personal injury.

### HOW TO AVOID THE HAZARD

- Do not tamper with the interlock switches.
- Check the operation of the interlock switches daily and replace any damaged switches before operating the machine.





