



42" and 48" Vac-Bagger
Wheel Horse® Lawn and Garden Tractor
Attachment

Model No. 79203—210000001 and Up

Operator's Manual

Contents

	Page
Introduction	2
Safety and Instruction Decals	3
Assembly	4
Loose Parts	4
Preliminary Preparation	5
Preparing the Tractor	6
Preparing the Mower	6
Installing the Vac-Bagger	9
Removing the Vac Bagger	13
Operation	17
Using the Full Bag Tester	17
Emptying the Grass Bags	17
Adjusting Height-of-Cut	17
Clearing Obstructions From Bagger	18
Operating and Bagging Tips	18
Maintenance	19
Recommended Maintenance Schedule	19
Inspecting the Vac Bagger Attachment	20
Inspecting the Mower Blades	20
Caring for the Grass Bags	20
Cleaning the Vac Bagger Attachment	20
Storage	20

Introduction

Thank you for purchasing a Toro product.

All of us at Toro want you to be completely satisfied with your new product, so feel free to contact your local Authorized Service Dealer for help with service, genuine replacement parts, or other information you may require.

Whenever you contact your Authorized Service Dealer or the factory, always know the model and serial numbers of your product. These numbers will help the Service Dealer or Service Representative provide exact information about your specific product. You will find the model and serial number plate at the location shown in Figure 1.

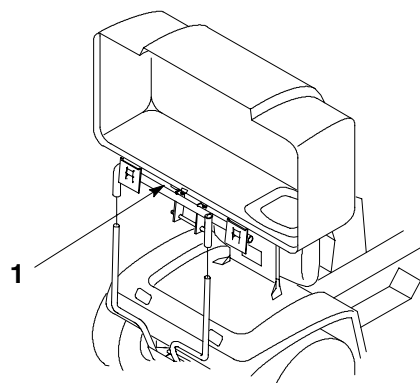


Figure 1

1. Model and serial number plate

For your convenience, write the product model and serial numbers in the space below.

Model No.: _____
Serial No.: _____

Read this manual carefully to learn how to operate and maintain your product correctly. Reading this manual will help you and others avoid personal injury and damage to the product. Although we design, produce and market safe, state-of-the-art products, you are responsible for using the product properly and safely. You are also responsible for training persons, who you allow to use the product, about safe operation.

The warning system in this manual identifies potential hazards and has special safety messages that help you and others avoid personal injury, even death. ***Danger***, ***Warning***, and ***Caution*** are signal words used to identify the level of hazard. However, regardless of the hazard, be extremely careful.

Danger signals an extreme hazard that will cause serious injury or death if the recommended precautions are not followed.

Warning signals a hazard that may cause serious injury or death if the recommended precautions are not followed.

Caution signals a hazard that may cause minor or moderate injury if the recommended precautions are not followed.

Two other words are also used to highlight information. ***Important*** calls attention to special mechanical information, and ***Note*** emphasizes general information worthy of special attention.

Safety and Instruction Decals



Safety decals and instructions are easily visible to the operator and are located near any area of potential danger. Replace any decal that is damaged or lost.

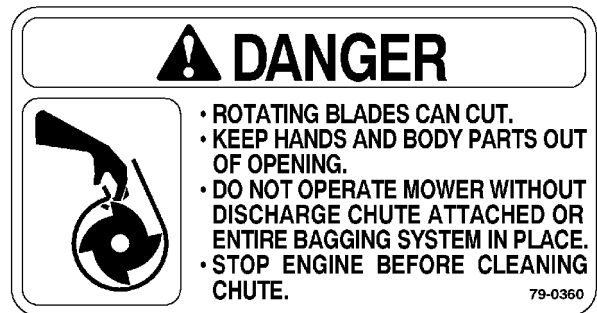
On Inside Bagger Hinge Frame (Part No. 92-7113)



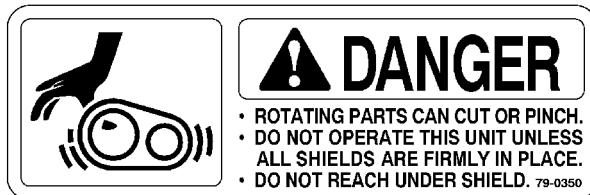
Molded Into The Belt Cover (Part No. 92-1122)



Molded Into The Blower Housing And Belt Cover (Part No. 79-0360)



Molded Into The Belt Cover (Part No. 79-0350)



On The Inner Cover (Part No. 92-7108)



Assembly

Note: Determine the left and right side of the machine from the normal operating position.

Loose Parts

Note: Use the chart below to identify parts used for assembly.

DESCRIPTION	QTY.	USE
Bolt 3/8-16 x 1-3/4"	2	Install bagger mount to tractor
Lock nut 3/8"	2	
Spacer	2	
Grass baffle (1 hole-42" deck only)	1	Install grass baffle (42" deck only)
Carriage bolt 3/8-16 x1" (25 mm)	1	
Lock nut 3/8"	1	
Grass baffle (2 holes-48" deck only)	1	Install grass baffle (48" deck only)
Carriage bolt 3/8-16 x1" (25 mm)	2	
Lock nut 3/8"	2	
Double groove pulley	1	Install blower drive
Pivot support	1	Install blower pivot support to mower
Bolt 5/16-18 x 3/4" (19 mm)	1	
Flange nut 5/16"	1	
Blower assembly	1	Assemble the blower
Spring	1	
Screw #10-32 x 3/4" (19 mm)	1	
Washer 7/32"	2	
Nut #10	2	
Latch (long-48" deck only)	1	
Latch (short-42" deck only)	1	
Bolt 1/4-20 x 3/4" (19 mm)	1	
Washer 1/4"	1	
Lock nut 1/4"	1	
Bagger Cover	1	Assemble the bagger
Indicator rod	1	
Handle	1	
Jam nut 1/4"	1	
Clips	2	
Pan head screw 1/4-20 x 5/8" 916 mm)	2	
Lock nut 1/4"	2	
Frame hinge assembly	1	

DESCRIPTION	QTY.	USE
Discharge tube	1	Assemble knob to discharge chute
Knob	1	
Washer 7/32"	1	
Screw #10-24 x 5/8" (16 mm)	1	
Belt cover (42" deck)	1	Install belt cover
Belt cover (48" deck)	1	
Belt cover bracket (42" deck)	1	
Belt cover bracket (48" deck)	1	
Flange head screw, 1/4-20 x 1/2" (13 mm)	5	
Bolt 1/4-20 x 5/8" (16 mm)	2	
Lock nut 1/4"	2	
Spring	1	Install counterbalance spring
Chain	1	
Carriage bolt 5/16-18 x 1-1/4" (32 mm)	1	
Washer 5/16"	3	
Locknut 5/16"	1	
Bagger mount	1	Install bags
Hairpin cotter	1	
Bag	2	
Operator's Manual	1	Read before operating

Preliminary Preparation

Park the tractor and mower on a level surface, disengage the blade control (PTO), set the parking brake, and turn the ignition key to "OFF" to stop the engine. Remove the ignition key.

Lower the mower to its lowest position and remove the mower from the tractor. Refer to Mower Operator's Manual for removal instructions.

Thoroughly clean the mower deck. All debris must be removed to ensure that parts will fit the mower properly.

Preparing the Tractor

Install Spacers for Bagger Mount

1. Install spacers on the inside of the tractor frame, using (2) 3/8 x 1-3/4" (44 mm) bolts and (2) 3/8" lock nuts (Fig. 2).
2. Allow the spacers to remain installed, even when bagger attachment is not being used.

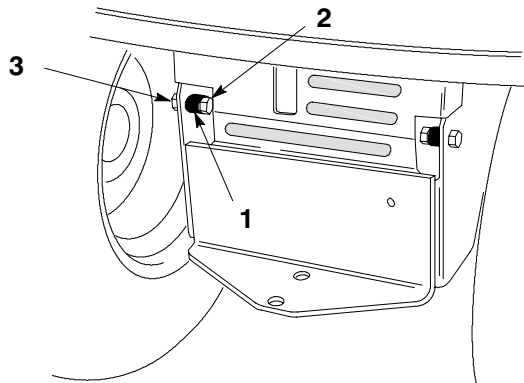
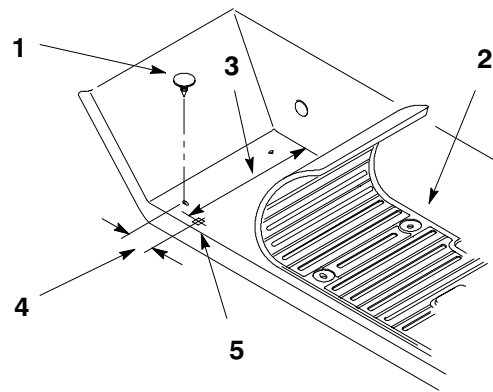


Figure 2

- | | |
|------------------|----------------------|
| 1. Spacer | 3. Bolt 3/8 x 1-3/4" |
| 2. Lock nut 3/8" | |

Add Hole for Counterbalance Chain

1. Push up on plastic rivets at rear of right foot pad and remove rivets. Lay the pad toward the front to access the foot rest for drilling a hole (Fig. 3).
2. Measure and mark location, center punch and drill a 5/16" hole through right foot rest (Fig. 3).
3. Using a file, square off the hole to accept the head of a 5/16" carriage bolt.(Fig. 3).



m-3256

Figure 3

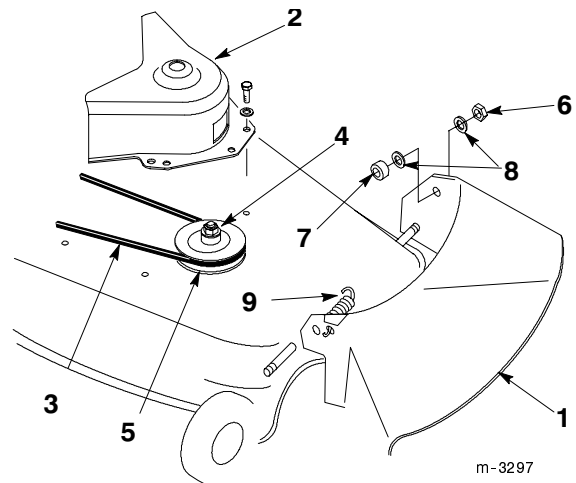
- | | |
|---------------------|--|
| 1. Plastic rivet | 4. 1-5/16" (3.3 cm) |
| 2. Foot pad | 5. Drill 5/16" hole - square off with file |
| 3. 6-1/2" (16.5 cm) | |
4. Leave pad loose for later installation of bolt for counterbalance chain.

Preparing the Mower

Remove the Discharge Chute

1. Remove the discharge chute from the mower (Fig. 4).
2. Remove belt cover from right side (Fig. 4).

Note: Save all parts and hardware for use when using mower to side discharge.



m-3297

Figure 4

- | | |
|------------------------|--------------------|
| 1. Discharge chute | 6. Jam nut, 3/8" |
| 2. Belt cover | 7. Rubber bushing |
| 3. Blade drive belt | 8. Plastic washers |
| 4. Nut and lock washer | 9. Torsion spring |
| 5. Single pulley | |

Install Mower Baffle

Important Only required for s/n below 7904310 for mower deck model 78260 and s/n below 7902555 for mower deck model 78268.

1. Remove the bolt(s) and nut(s) at the end of the grass plate, inside the mower, near the back edge of the discharge opening. Discard the hardware.
2. Select the appropriate grass baffle (42" deck, single hole or 48" deck, two holes) Install the grass baffle tight against the grass plate with top edge up against inside of mower.
3. On 42" decks, secure with a 3/8 x 1" carriage bolt and 3/8" lock nut (Fig. 5).

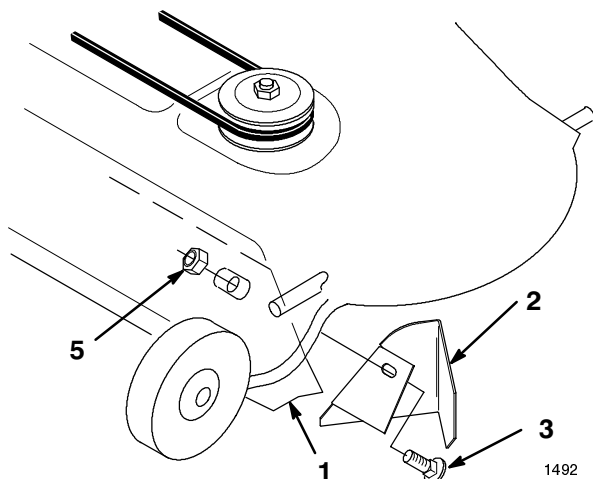


Figure 5

- | | |
|----------------|------------------------------------|
| 1. Grass plate | 3. Carriage bolt, 3/8 x 1" (25 mm) |
| 2. 42" Baffle | 4. Nut, 3/8" |

4. On 48" decks, secure with two 5/16" x 1" (25 mm) carriage bolts and 5/16" lock nuts (Fig. 6).

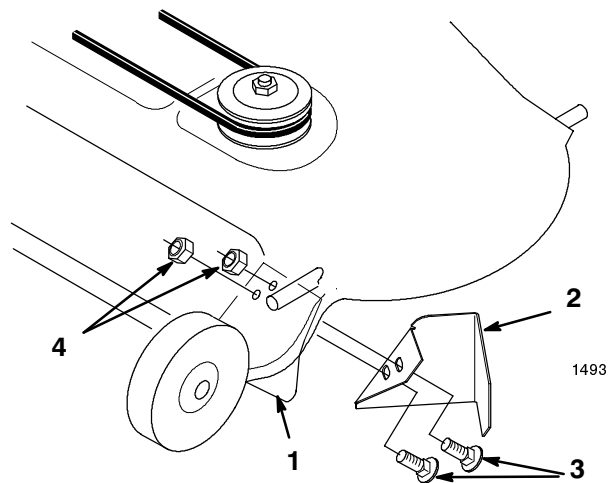


Figure 6

- | | |
|----------------|------------------------------------|
| 1. Grass plate | 3. Carriage bolt 5/16 x 1" (25 mm) |
| 2. 48" Baffle | 4. Nut 5/16" |

5. Rotate blade and check for clearance with baffle. If necessary adjust the baffle so blade does not hit.

Install Blower Drive Pulley

1. Remove the belt from the right hand spindle pulley.
2. Remove the nut and lock washer retaining the pulley (Fig. 7). Remove the single groove pulley.

Note: Block the blade with a piece of wood to stop it from turning while you remove the pulley nut. If blade slips hold hex portion of spindle with a wrench.

Note: When nut is removed the shaft is free to drop out of the spindle. Be sure to support the spindle and blade from the bottom side.

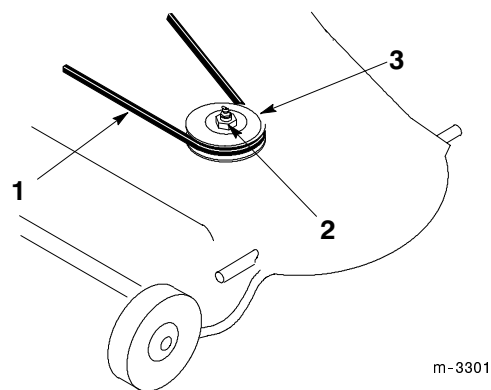


Figure 7

- | | |
|------------------------|------------------|
| 1. Blade drive belt | 3. Single pulley |
| 2. Nut and lock washer | |

3. Slide the new double pulley onto the spindle shaft with the word "TOP", stamped into largest pulley, facing up. Secure with previously removed 5/8" lock washer and nut (Fig. 8).
4. Tighten the nut to 50-75 ft. lb. (68-101 Nm).
5. Install the blower drive belt around the bottom pulley as shown (Fig. 8).

Note: Use belt part number 79-7480 for 42" mowers and the belt part number 79-7490 for 48" mowers.

6. Reinstall the existing mower belt onto the top pulley (Fig. 8).

Note: Check that mower belt is properly located on idler and pulleys.

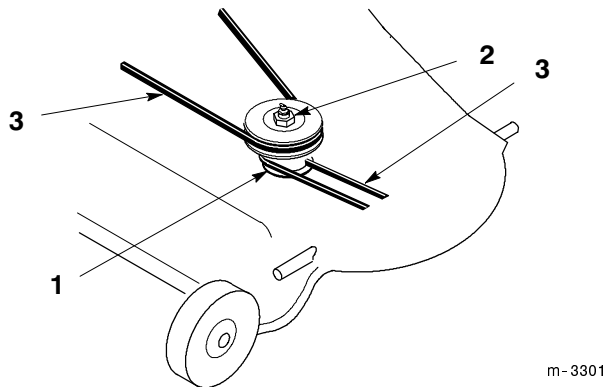


Figure 8

- | | |
|--------------------------------------|----------------------|
| 1. New double pulley
(note "TOP") | 3. Mower belt |
| 2. Lock washer and 5/8" nut | 4. Blower drive belt |

Install Blower Pivot Support

1. Select the proper hole in the pivot support (42" deck-outside, 48" deck-inside) and slide it over the threaded stud welded to front of mower near discharge opening (Fig. 9).
2. Align pivot support parallel with front curved edge and tight against top of mower (Fig. 9). Clamp in this position.
3. Drill a 11/32" diameter hole in the top of the mower deck using the pivot support as a guide. Secure the pivot support to the mower with a 5/16 x 3/4" (19 mm) bolt, through from the underside of the mower, and a flange nut (Fig. 9). Place the 3/8" jam nut (removed from discharge chute) snug onto stud. Do not overtighten jam nut.

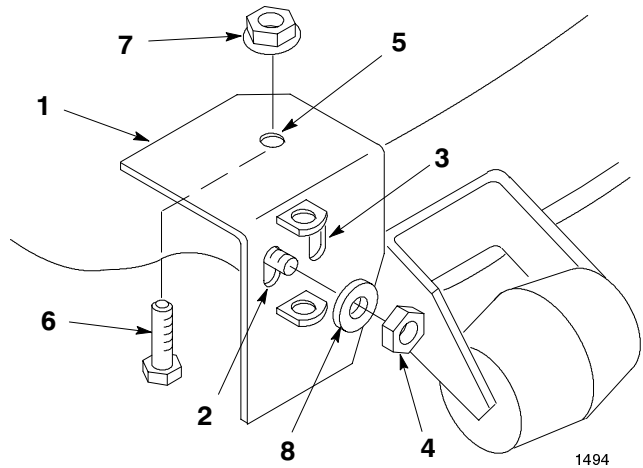


Figure 9

- | | |
|--|---|
| 1. Pivot support | 5. Drill 11/32 diameter hole |
| 2. Mounting hole 42" | 6. Bolt 5/16 x 3/4" (19 mm) |
| 3. Mounting hole 48" | 7. Flange nut 5/16" |
| 4. Jam nut 3/8"
(removed from discharge
chute) | 8. Plastic washer (removed
from discharge chute) |

Assemble Blower

1. Install the long hook end of tension spring and #10 nut onto a #10 x 3/4" screw. Thread the nut on within 1/8" from the head end of screw so that the spring has space to rotate freely (Fig. 10).
2. Slide a #10 washer onto the screw and insert through the blower housing. Install a second #10 washer and #10 nut (Fig. 10). While holding the first nut, tighten the second so that the assembly is tight against the plastic housing.
3. Select the appropriate latch (42" deck-short, 48" deck-long) Hook the spring into the hole in the latch and mount the latch to the blower housing with a 1/4 x 3/4" (19 mm) bolt, 1/4" washer and 1/4" lock nut (Fig. 10). Leave the nut loose enough so that the latch pivots freely.

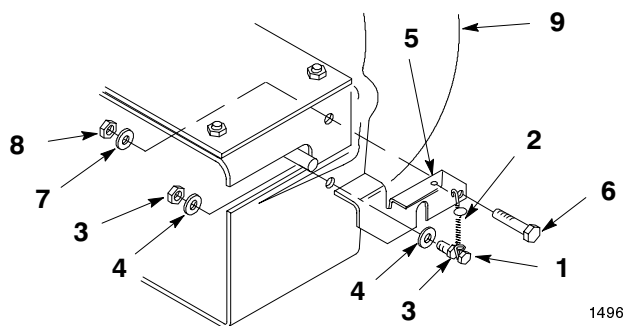


Figure 10

- | | |
|-----------------------------|----------------------------|
| 1. Screw #10 x 3/4" (19 mm) | 6. Bolt 1/4 x 3/4" (19 mm) |
| 2. Spring | 7. Washer 1/4" |
| 3. Nut #10 | 8. Lock nut 1/4" |
| 4. Washer #10 | 9. Blower assembly |
| 5. Latch | |

Assemble Bagger Cover

- Slide the threaded end of the indicator rod through (2) clips, then rubber seal and slot in cover (Fig. 11).
- Secure the clips to the cover with (2) 1/4 x 5/8" (16 mm) pan head screws and (2) 1/4" lock nuts (Fig. 11).
- Thread the jam nut and handle completely onto the threaded end of indicator rod. Rotate the handle so that the decal can be read from the operators position, then tighten the jam nut (Fig. 11).

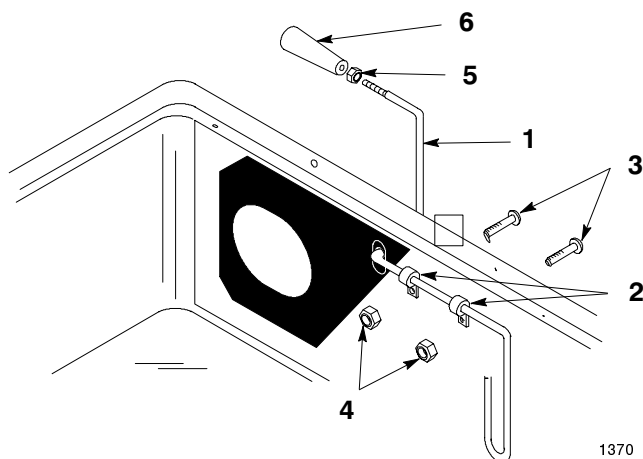


Figure 11

- | | |
|--------------------------------------|------------------|
| 1. Indicator rod | 4. Lock nut 1/4" |
| 2. Clips | 5. Jam nut 1/4" |
| 3. Pan head screw 1/4 x 5/8" (16 mm) | 6. Handle |

- Mount the frame hinge to the cover with the (2) 1/4" bolts attached to it. Secure with (2) 1/4" lock nuts (Fig. 12).

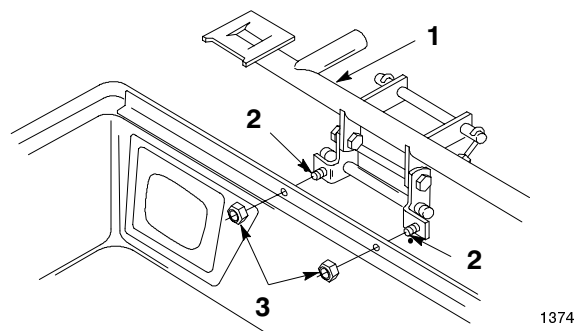


Figure 12

- | | |
|-------------------------|------------------|
| 1. Frame hinge | 3. Lock nut 1/4" |
| 2. Bolt 1/4" (attached) | |

Assemble Discharge Tube

- Cut 2-3/4" (7 cm) off the bottom of the discharge tube (Fig. 13).
- Attach the knob to the center hole in the discharge tube and secure with a 7/32" washer and #10-24 x 5/8" (16 mm) screw (Fig. 13).

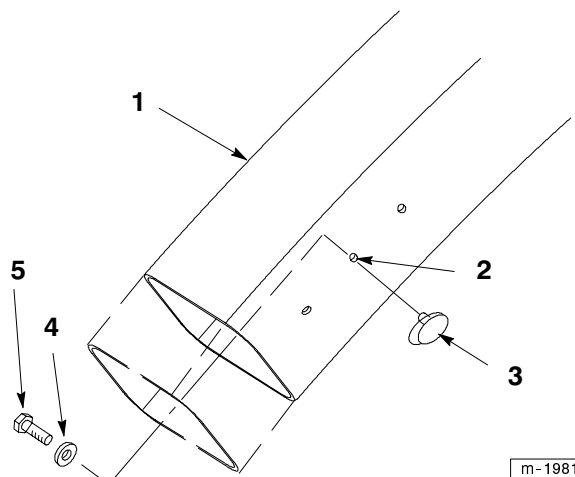


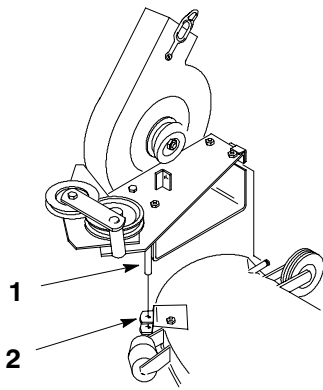
Figure 13

- | | |
|---------------------|--------------------------------|
| 1. Discharge tube | 4. Washer 1/4" |
| 2. Tube center hole | 5. Screw #10-24 x 5/8" (16 mm) |
| 3. Knob | |

Installing the Vac-Bagger

Mount the Blower

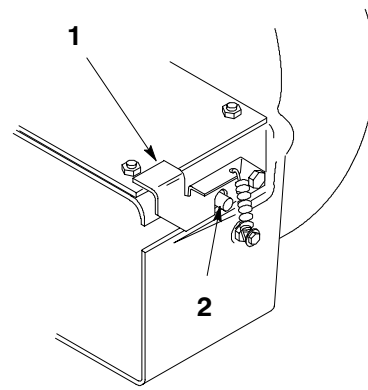
- Insert pivot pin on blower into pivot support bracket on mower (Fig. 14).



1838

Figure 14

1. Pivot pin
2. Pivot support bracket

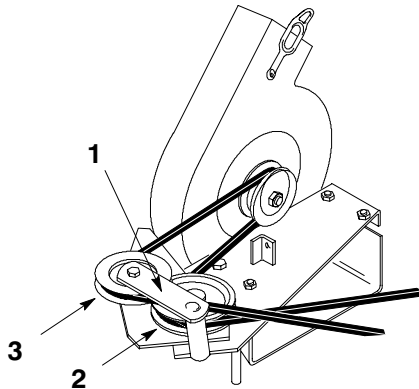


1840

Figure 16

1. Blower latch
2. Pin

2. With the blower swung out in the open position, install the blower drive belt between the idler pulley bracket and pulleys. Then loop the belt around the blower pulley (Fig. 15).



1839

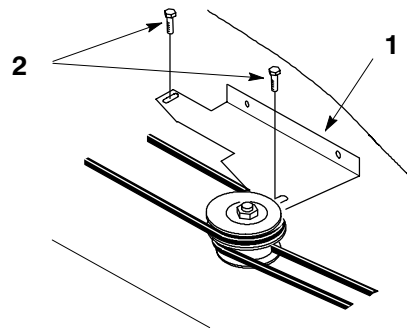
Figure 15

1. Idler pulley bracket and pulley
2. Top side of belt against bottom pulley
3. V-side of belt into top pulley

3. With the belt installed, swing the blower toward the mower until the blower latch locks over the pin at the back of the mower (Fig. 16).

Install Belt Cover

1. Two belt covers and one bracket for a 42" deck are supplied.
2. On 42" mowers, mount the belt cover bracket using (2) 1/4 x 1/2" (13 mm) thread forming flange screws in holes used by original cover (Fig. 17).



M - 3302

Figure 17

1. Belt cover bracket 42"
2. Flange head 1/4 x 1/2" (13 mm) thread forming screw

Note: Center slots of cover bracket before tightening flange screws.

3. On 42" mowers, mount the belt cover loosely to the outside of the belt cover bracket and top of the mower using (3) 1/4 x 1/2" flange screws (Fig. 18).

Note: Do not tighten screws as adjustment must be made later.

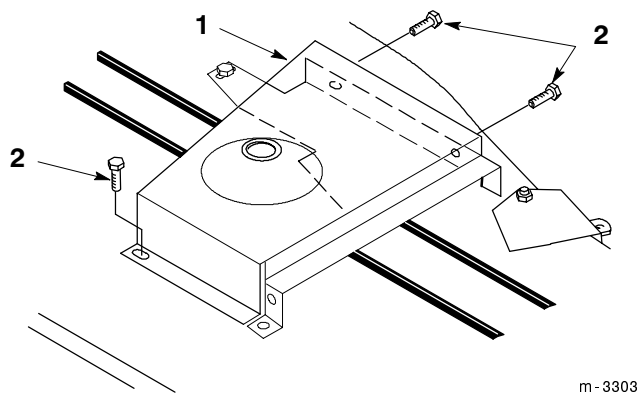


Figure 18

1. Belt cover 42"
2. Flange screws 1/4 x 1/2" thread forming

4. On 48" mowers mount belt cover loosely on top of mower with (2) 1/4 x 3/8" flange screws (Fig. 19).

Note: Do not tighten screws as adjustment must be made later.

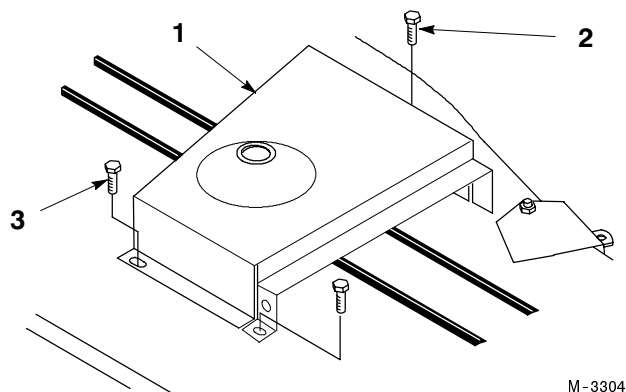


Figure 19

1. Belt cover 48"
2. Flange screws 1/4 x 3/8" thread forming
3. Flange screws 1/4 x 1/2" thread forming

Install Blower Belt Cover

1. Mount blower belt cover using (2) 1/4 x 5/8" bolts and (2) 1/4" lock nuts (Fig. 20). Tighten lock nuts slightly so light drag is felt on belt cover when tilted upward. Cover must close freely when assembled.

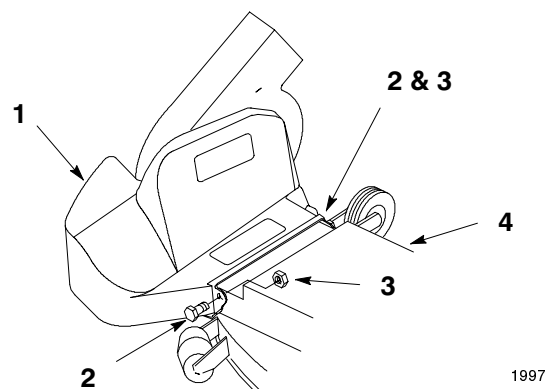


Figure 20

1. Blower belt cover
2. Bolt 1/4 x 5/8" (16 mm)
3. Lock nut 1/4"
4. Mower belt cover

2. Adjust blower belt cover so that "L" brackets rest on pulley plate. Tighten blower belt cover mounting screws (Fig. 21).

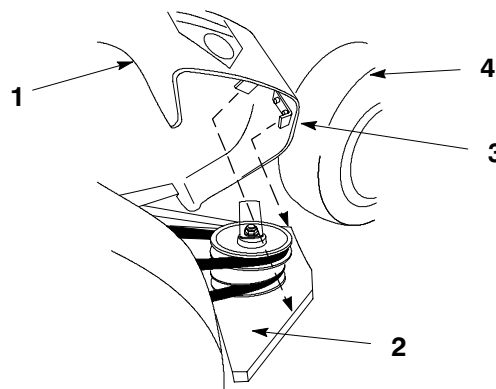


Figure 21

1. Blower belt cover
2. Pulley plate
3. "L" brackets
4. Front wheel

3. Tighten mower belt cover mounting screws (Fig. 18 and 19).

Reinstall Mower to Tractor

1. Reinstall the mower to the tractor. Refer to the "Installing the Mower" in the Mower Operator Manual.

Attach Counterbalance Chain

1. Place a 5/16 x 1 1/4" (32 mm) carriage bolt through the squared hole (added in "Tractor Preparation") in the right hand footrest (Fig. 22).

- Place two 5/16" (19 mm) washers and a link on one end of the chain onto the carriage bolt. Position the end link on the bolt so that the remaining links hang toward the rear. Secure with a third washer and a 5/16" locknut (Fig. 22).
- Hook the spring around the wheel shaft at the rear of mower and into one of the chain links (Fig. 22). Refer to Operation Section, "Adjusting Height-of-Cut" for recommended chain link setting.

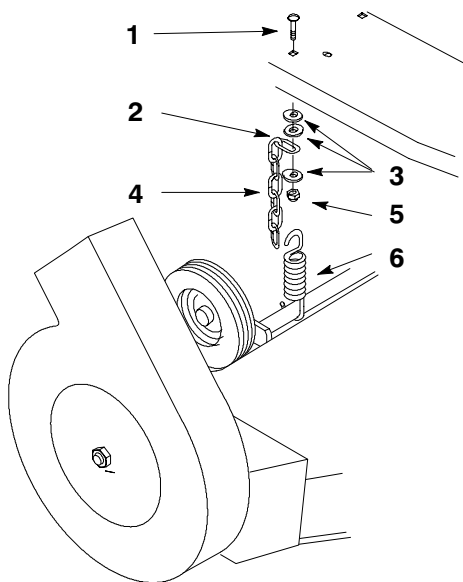


Figure 22

- | | |
|---|------------------|
| 1. Carriage bolt 5/16-18 x 1-1/4" (32 mm) | 4. Chain |
| 2. Mounting Link | 5. Locknut 5/16" |
| 3. Washer 5/16" | 6. Spring |

- Reinstall the foot rest pad using the two plastic rivets removed earlier.

Install Bagger Assembly

- Slide the bottom of the quick-attach bracket down into the hole in the hitch and hook the notches onto the spacers located inside the tractor frame (Fig. 23).
- Slide the hair pin cotter through the hole at the bottom of the quick-attach bracket (Fig. 23).

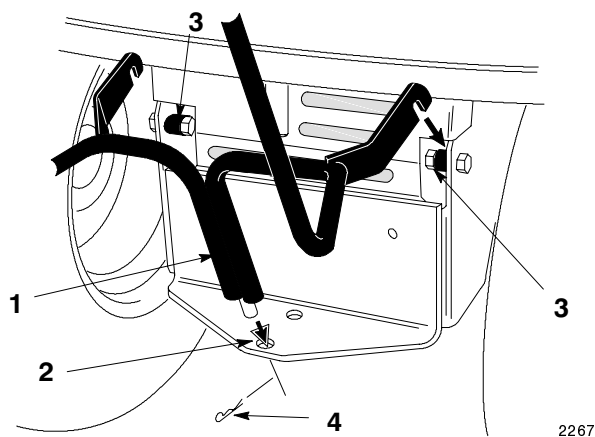


Figure 23

- | | |
|-------------------------|--------------------|
| 1. Quick-attach bracket | 3. Spacers |
| 2. Hole in hitch | 4. Hair pin cotter |

- Tip the tractor seat forward.
- With lid in the open position carefully lift the bagger top and slide it onto the quick-attach bracket (Fig. 24).

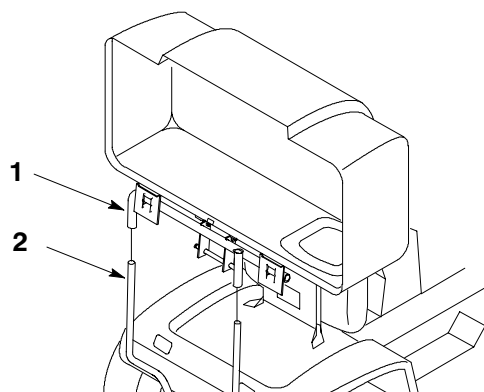


Figure 24

- | | |
|---------------|-------------------------|
| 1. Bagger top | 2. Quick-attach bracket |
|---------------|-------------------------|



Caution



If you remove the bagger top when it is closed (in the down position), the top may suddenly fly open and you or someone may be bruised, pinched, or injured.

Always open (raise) the bagger top before you remove or install it on the quick-attach bracket.

5. Install the bags by sliding the bag frame hooks onto the retaining brackets (Fig. 25).

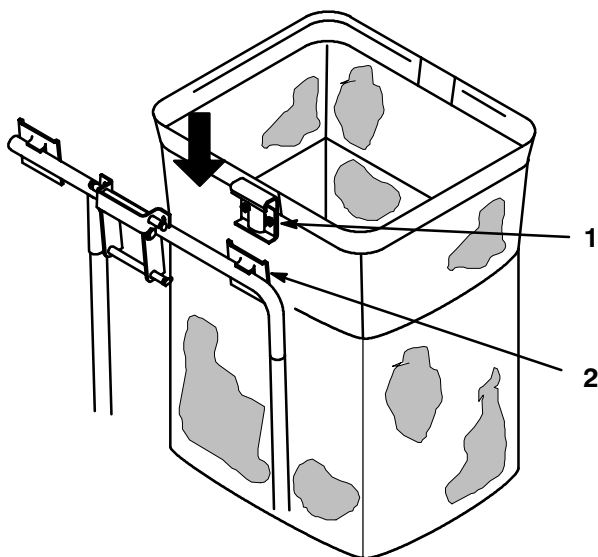


Figure 25

1. Bag frame hook
2. Retaining bracket

6. Lower the bagger top onto the bags. Then push down on both bag retainer handles until they lock on the bag frame (Fig. 26).

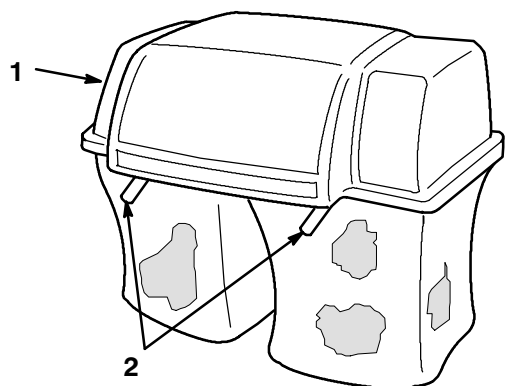


Figure 26

1. Bagger top
2. Bag retainer handles

Install Discharge Tube

1. Move the tractor seat to its normal position.
2. Insert the upper end of the discharge tube into the bagger top. Slide the lower end of the discharge tube over the blower opening (Fig. 27).
3. Hook the rubber latch over knob (Fig. 27).

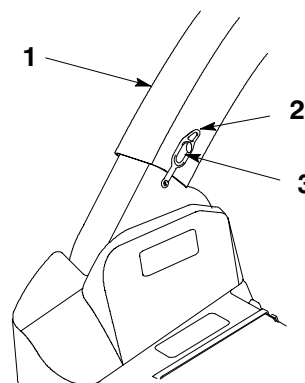


Figure 27

1. Discharge tube
2. Rubber latch
3. Knob

4. Check the side to side level of the mower at the desired cutting height. Due to varying conditions, it may be necessary to relevel the mower after installing the vac bagger. If so, refer to "Leveling the Mower Side to Side" in Mower Operator Manual.

Removing the Vac Bagger



Danger



If you operate mower without both grass bags installed or with the discharge tube removed, you and others may be injured by thrown debris or cut by the blade.

- Always operate the mower with either the complete grass catcher mounted in place or use the mower to side discharge.
- Make sure that the spring-loaded grass deflector is in the down position.

Remove the Discharge Tube

1. Unhook the rubber latch from the knob (Fig. 28).
2. Slide the lower end of the discharge tube off the blower discharge opening (Fig. 28). Pull the upper end of discharge tube out of bagger top.

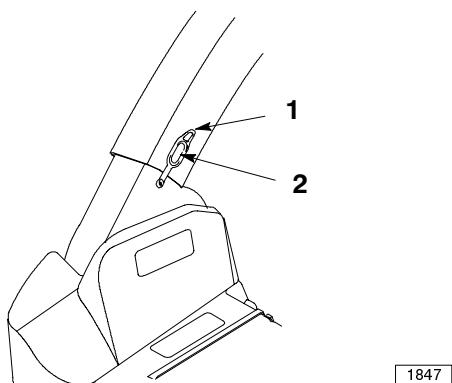


Figure 28

1. Rubber latch 2. Knob

Remove the Bagger Top

1. Tip the tractor seat forward.
2. Raise the bagger top and remove the grass bags from the bag frame (Fig. 29).

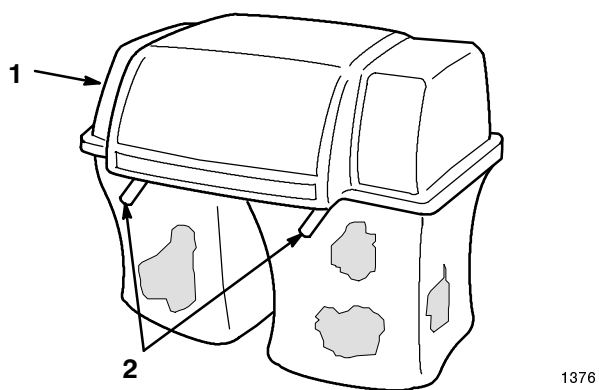


Figure 29

1. Bagger top 2. Bag retainer handles



Caution



If you remove the bagger top when it is closed (in the down position), the top may suddenly fly open and you or someone may be bruised, pinched, or injured.

Always open (raise) the bagger top before you remove or install it on the quick-attach bracket.

3. With the lid in the open position carefully lift the bagger top and slide off the quick-attach bracket (Fig. 30).

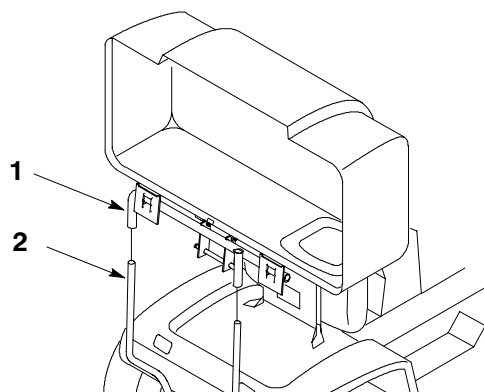


Figure 30

1. Bagger top 2. Quick-attach bracket

4. Remove the hairpin cotter and slide the bottom of the quick-attach bracket up out of the hole in the hitch and unhook from the spacers located inside the tractor frame (Fig. 31).

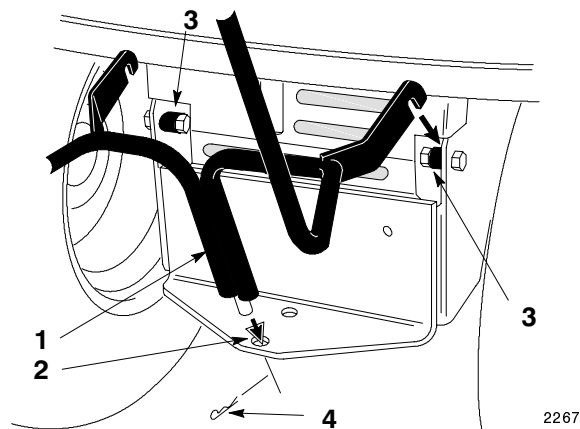


Figure 31

1. Quick-attach bracket 3. Spacers
2. Hole in hitch 4. Hair pin cotter

5. Move the tractor seat to its normal position.

Remove Blower Belt Cover

1. Remove the blower belt cover by removing (2) 1/4" lock nuts and 1/4 x 5/8" bolts (Fig. 32).

Note: Save all parts and hardware for use when installing blower.

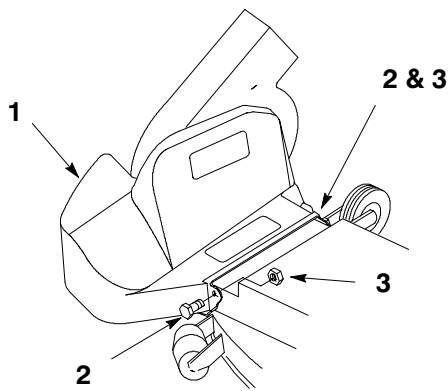


Figure 32

1. Mower belt cover
2. Bolt 1/4 x 5/8" (16 mm)
3. Lock nut 1/4"

Remove the Blower from the Mower

1. Open latch and swing the blower out away from the mower, remove the blower belt from idler and blower pulleys (Fig. 33).

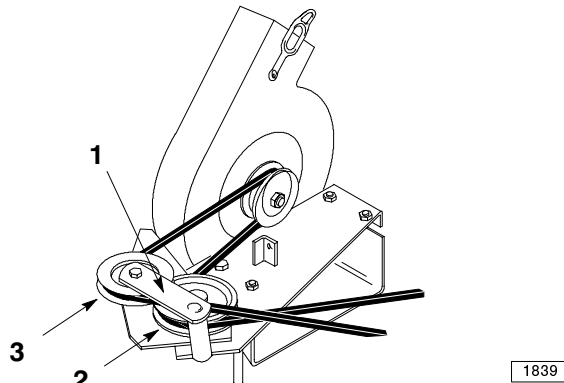


Figure 33

1. Idler pulley bracket and pulley
2. Top side of belt against bottom pulley
3. V-side of belt into top pulley

2. Remove the blower by lifting the pivot pin out of the pivot support (Fig. 34).

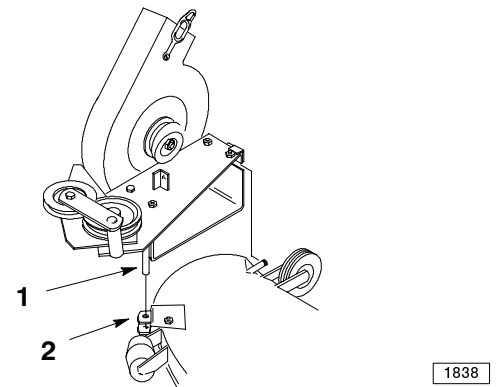


Figure 34

1. Pivot pin
2. Pivot support

Remove Counterbalance Spring and Chain

1. Unhook the chain from the footrest and the spring from the gage wheel shaft and remove for reuse. Reinstall the nut and washer to the bolt in the footrest.

Remove the Mower Belt Cover

1. Remove the mower belt cover from the right side pulley (Fig. 35). Save mounting hardware.

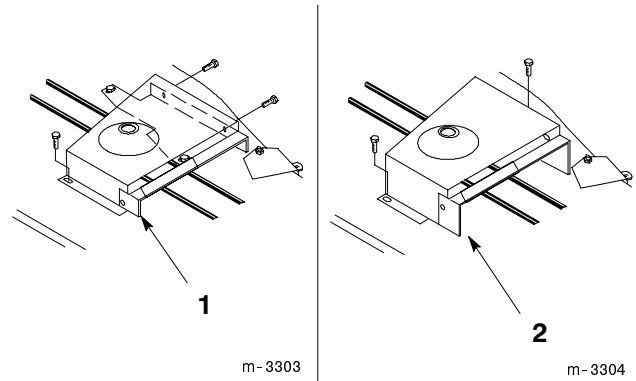
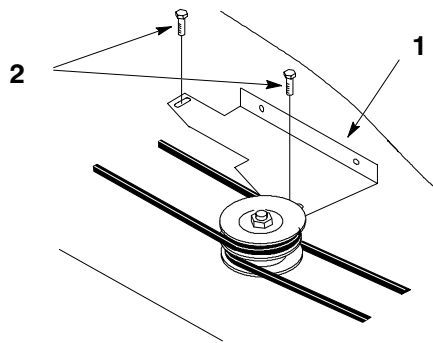


Figure 35

1. Belt cover-42"
2. Belt cover-48"

2. On 42" mower, remove the belt cover bracket (Fig. 36).



m-3302

Figure 36

1. Belt cover bracket 42"
2. Flange head screws

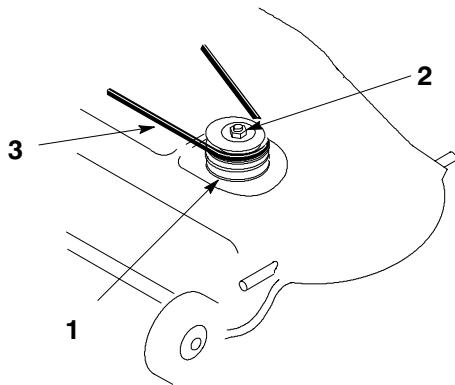
Remove the Blower Drive Belt

1. Pull on mower idler assembly to release belt tension and remove blade drive belt from right side pulley (Fig. 37).
2. Remove blower drive belt.

Note: The double groove pulley can be left on for later use.

3. Reinstall the existing blade drive belt by rotating it onto the top pulley (Fig. 37).

Note: Check that mower belt is properly located on idler and pulleys.



m-3301

Figure 37

1. Double pulley
2. Lock washer and nut
3. Blade drive belt

Remove the Blower Pivot Support

1. Remove the pivot support from the mower (Fig. 38).

Note: Save all parts and hardware for use when installing blower.

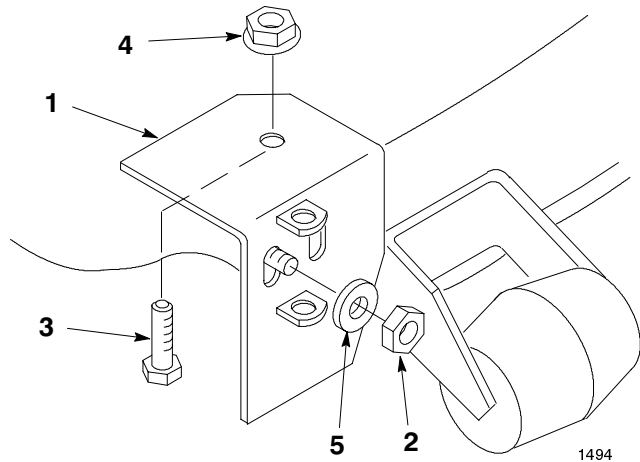
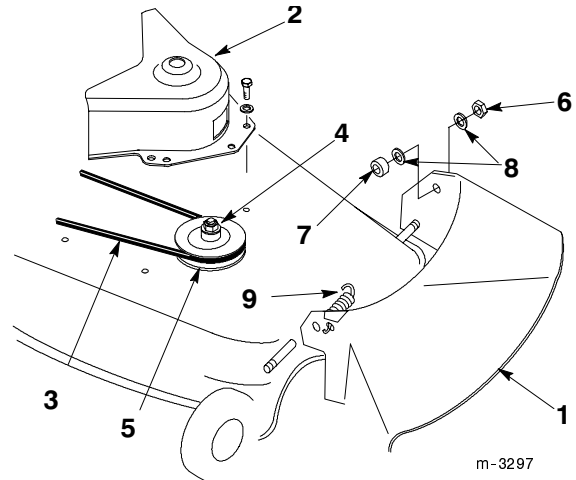


Figure 38

1. Pivot support
2. Nut
3. Bolt
4. Flange nut
5. Plastic washer

Install Belt Cover and Discharge Chute

1. Install the discharge chute onto the mower with saved hardware (Fig. 39).
2. Install the original belt cover onto the mower with saved hardware (Fig. 39).



m-3297

Figure 39

1. Discharge chute
2. Belt cover
3. Blade drive belt
4. Nut and lock washer
5. Single pulley
6. Jam nut, 3/8"
7. Rubber bushing
8. Plastic washers
9. Torsion spring

Operation

Note: Determine the left and right side of the machine from the normal operating position.

Caution

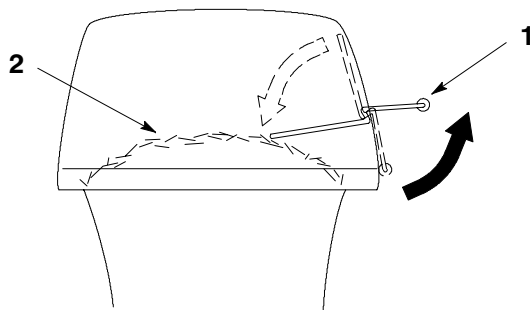
To avoid personal injury, read and follow the statements below.

- **Become familiar with all operating and safety instructions in the operator's manual for your tractor and mower before using this attachment.**
- **Never remove the discharge tube, bags, bagger top, or the blower while the engine is running.**
- **Always shut the engine off before clearing an obstruction from the vac bagging system.**
- **Never do maintenance or repairs while the engine is running.**

Using the Full Bag Tester

As grass is cut and blown into the bags, the left bag fills first, then the right bag. If you overfill the bags, grass will eventually plug the discharge tube or elbow.

1. Stop the tractor and apply the brake.
2. To check if both bags are full, periodically raise the full bag tester handle (Fig. 40). If you feel resistance as you raise the handle, the bags must be emptied because they are full (Fig. 40).



1381

Figure 40

1. Full bag tester handle 2. Bag full

Emptying the Grass Bags

Grass bags can weigh up to 90 lb (41kg) when full. Be careful when lifting or handling a grass bag that is full. To empty the grass bags:

1. Stop the tractor, set the parking brake, and disengage the power take off (PTO) by pushing the PTO control to OFF (this stops the mower blades). Shut the engine off before you get off the tractor.
2. Tip the tractor seat forward.
3. Pull up on both bag retainer handles until they unlock from the bag frame (Fig. 26). Now open (raise) the bagger top.
4. Compress debris into the bags. With both hands, lift up on the bag and unhook it from the retaining bracket (Fig. 25). Empty the bag. Repeat for the other bag.
5. Install the bags by sliding the bag frame hooks onto the retaining brackets (Fig. 25).
6. Lower the bagger top onto the bags. Then push down on both bag retainer handles until they lock on the bag frame (Fig. 26).
7. Move the tractor seat to its normal position.

Adjusting Height-of-Cut

When mower height-of-cut is changed, the spring location in the chain links must also be changed.

1. Select spring attachment link according to chart for the height-of-cut used.
2. Hook spring into recommended link (Fig. 41).

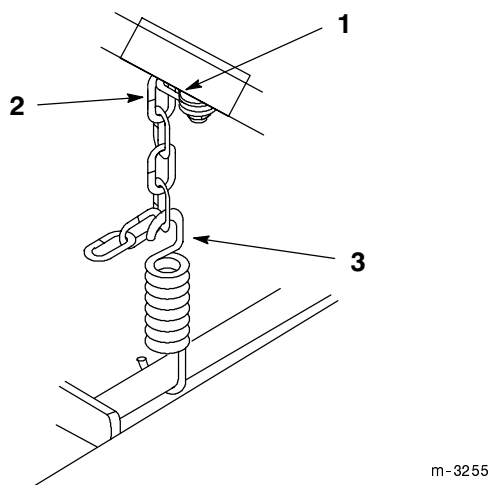


Figure 41

1. Mounting Link
2. Link 1
3. Spring Hook

Height-of-Cut	Recommended Link Position
1-2 in. (25-51 mm)	4
2-3 in. (51-76 mm)	3
3-4 in. (76-101 mm)	2-3

Clearing Obstructions From Bagger

1. Stop the tractor, shift into neutral, set the parking brake, push the PTO control to OFF (this stops the mower blades), turn the ignition key to OFF to stop the engine, and remove the key from the switch.
2. Check the grass bags and empty them if they are full.
3. Remove and separate the discharge tube and blower from the bagger top and mower. Using a stick or similar object, carefully remove and clear the obstruction from the mower, discharge tube, blower, and the bagger top.
4. After you remove the obstruction, install the complete bagger system and resume operation.

Operating and Bagging Tips

Size

Remember that the tractor is longer and wider with this attachment installed. By turning too sharply in confined places you may damage the attachment.

Trimming

Always trim with the left side of the mower. Do not trim with the right side of the mower because you could damage the bagger's blower and discharge tube.

Cutting Height

Do not set the mower cutting height too low because long grass surrounding the mower can prevent air from getting under the mower and entering the bagging system. If enough air doesn't get under the mower, the bagging system will plug.

Cutting Frequency

Cut the grass often, especially when it grows rapidly. You will have to cut your grass twice if it gets excessively long (refer to Bagging Long Grass, page 19).

Cutting Technique

For best lawn appearance, be sure to slightly overlap the mower into the previously cut area. This helps reduce the load on the engine and reduces the chance of plugging the blower and discharge tube.

Using Bags

Although not required, bags may be inserted into each cloth grass bag as a liner to collect clippings and make disposal more convenient (Fig. 42). If you use a bag liner, remove the filled grass bag and close the top of the liner. Then pull the liner out the grass bag or turn the bag upside down while holding the handle on the bottom of the grass bag (allows liner to slide out).

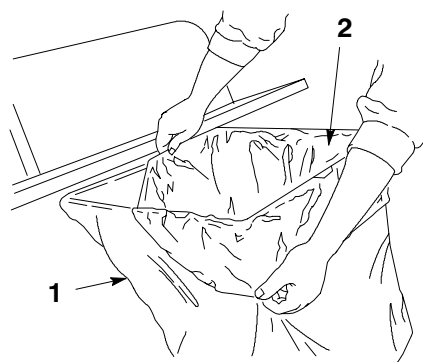


Figure 42

1. Cloth grass bag
2. Bag (liner)

1378

Bagging Speed

Most often you will bag with the tractor throttle in the FAST position and drive at a normal ground speed. However, in extremely dry and dusty grass, you may want to slightly reduce throttle speed and increase ground speed of the tractor. The bagging system may plug if you drive too fast and the engine speed gets

too slow. On hills it may be necessary to slow the tractor's ground speed. This helps maintain engine speed and bagging efficiency. Mow down hill whenever possible.

Caution

As the grass bags fill, extra weight is added to the back of the tractor. If you stop and start suddenly on hills, you may lose steering control or the tractor may tip.

- Do not start or stop suddenly when going uphill or downhill. Avoid uphill starts.
- If you do stop the tractor when going uphill, disengage the PTO (stop the mower blades) by pushing the PTO control to OFF. Then back down the hill using slow reverse speed.
- Do not change speeds or stop on slopes.

Bagging Long Grass

Excessively long grass is heavy and may not be propelled completely into the grass bags. If this happens, the discharge tube and blower may plug. To avoid plugging the bagging system, mow the grass at a high height-of-cut, then lower the mower to your normal cutting height and repeat the bagging process.

Bagging Wet Grass

Always try to cut grass when it is dry because your lawn will have a neat appearance. If you must cut wet grass, use the conventional side discharge feature of the mower. Several hours later, when the clippings are dry, install the complete bagger attachment and vacuum up the grass clippings.

Signs of Plugging

As you are bagging, a small amount of grass clippings normally blow out the front of the mower. An excessive amount of clipping blow-out indicates that the bags are full or the system is plugged.

Maintenance

Note: Determine the left and right side of the machine from the normal operating position.

Recommended Maintenance Schedule

Maintenance Service Interval	Maintenance Procedure
Each Use	<ul style="list-style-type: none"> • Mower Housing—clean
5 Hours	<ul style="list-style-type: none"> • Cutter Blade—check • Mower Housing—clean
25 Hours	<ul style="list-style-type: none"> • Cutter Blade—check • Grease—Mower deck
Storage Service	<ul style="list-style-type: none"> • Cutter Blade—check • Grease—Mower deck • Belts—check for wear/cracks • Mower Housing—clean • Chipped Surfaces—paint

Caution



If you leave the key in the ignition switch, someone could accidentally start the engine and seriously injure you or other bystanders.

Remove the key from the ignition and disconnect the wire from the spark plug(s) before you do any maintenance. Set the wire aside so that it does not accidentally contact the spark plug.

Inspecting the Vac Bagger Attachment

Inspect the blower and bagger attachment after the first ten hours of operation, and monthly thereafter.

1. Check the discharge tube, elbow, and the bagger top. Replace these parts if they are cracked or broken.
2. Tighten all nuts bolts and screws.
3. Inspect the grass bags for deterioration.

**Danger**

You or bystanders could be severely injured by flying debris or thrown objects that may pass through worn or deteriorated grass bags.

- **Frequently check the grass bags for holes, rips, wear, and other deterioration. Do not wash the grass bags.**
- **If the bag has deteriorated, install new grass bags supplied by the manufacturer of this bagger attachment.**

Storage

1. Clean the bagger attachment (refer to Cleaning the Vac Bagger Attachment, page 20).
2. Inspect the bagger attachment for damage (refer to Inspecting the Vac Bagger Attachment, page 20).
3. Make sure the grass bags are empty and thoroughly dry.
4. Store the machine in a clean, dry place, out of direct sunlight. This protects the plastic parts and extends the life of the machine. If you must store the machine outside, cover it with a weatherproof cover.

Inspecting the Mower Blades

1. Inspect the mower blades regularly and whenever a blade strikes a foreign object.
2. If blades are badly worn or damaged, install new blades. Refer to your tractor or mower operator's manual for complete blade maintenance.

Caring for the Grass Bags

1. Washing the grass bags is not recommended.
2. To prevent rapid deterioration of bag material, store the bags so they dry completely after each use.

Cleaning the Vac Bagger Attachment

1. After each use, remove and wash the inside and outside of the bagger top, discharge tube, discharge elbow, blower and the underside of the mower, using water sprayed from a garden hose. Use a mild automotive detergent to remove stubborn dirt.
2. Make sure you remove matted grass from all parts.
3. After washing let all parts dry thoroughly. Do not wash the grass bags.