



Form No. 3439-853 Rev A

Count on it.

Parts Catalog

Flow Divider Kit

**Groundsmaster® 4500-D or 4700-D Rotary
Mower Traction Unit**

Model No. 31529



Ordering Replacement Parts

To order replacement parts, please supply the part number, the quantity, and the description of each part desired.

Understanding Reference Numbers

Each identified part in an illustration has a reference number. The reference number for a part also appears in the parts list, along with other information about the part.

This catalog uses two special reference number formats, one to indicate parts in a service assembly and another to indicate the quantity of a given part in an illustration.

Service Assembly Reference Numbers

Parts in service assemblies have reference numbers in the form a:b. The a represents the reference number of the entire service assembly and the b represents a sequential number unique to each part within the service assembly.

For example, a wheel assembly might be identified by reference number 6, the tire by 6:1, the valve by 6:2, and the wheel by 6:3. When you order the assembly identified by reference number 6, you receive all parts identified by reference numbers 6:1, 6:2, and 6:3. However, you may also order any part individually. Reference numbers of this type appear in illustration and in parts lists.

Reference Numbers Indicating Quantity

In an illustration, if a reference number indicates more than one part, the reference number has the form nX y. The n represents the quantity of the part, the X is the multiplication symbol, and the y represents the reference number.

For example, in an illustration, the reference number 2X 37 means that two of the parts identified by reference number 37 are indicated.

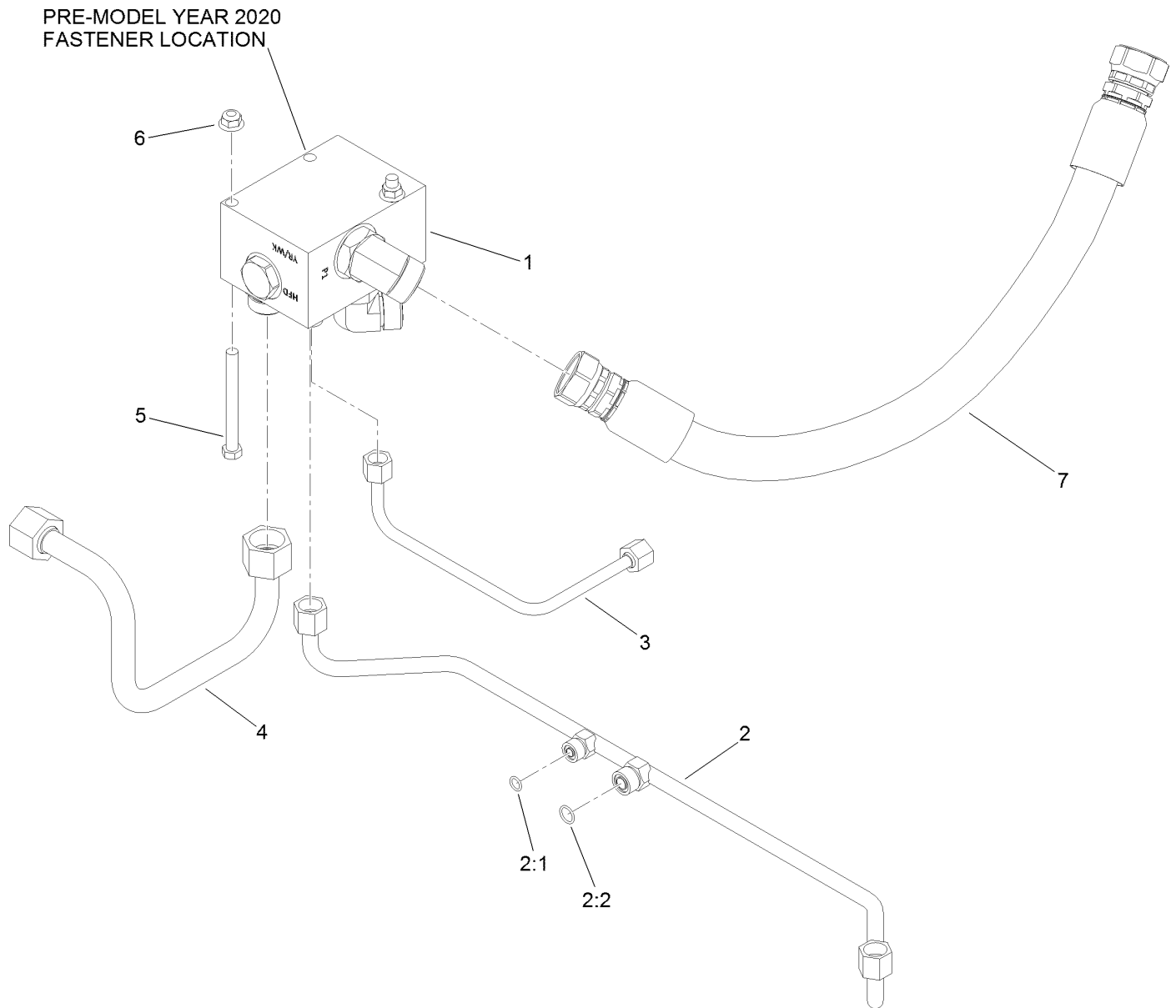
Contents

GM4500/4700 Automatic Flow Divider Assembly 4

Flow Divider Manifold Assembly No. 121-3128..... 6

GM4500/4700 Manual Flow Divider Assembly 8

GM4500/4700 Automatic Flow Divider Assembly

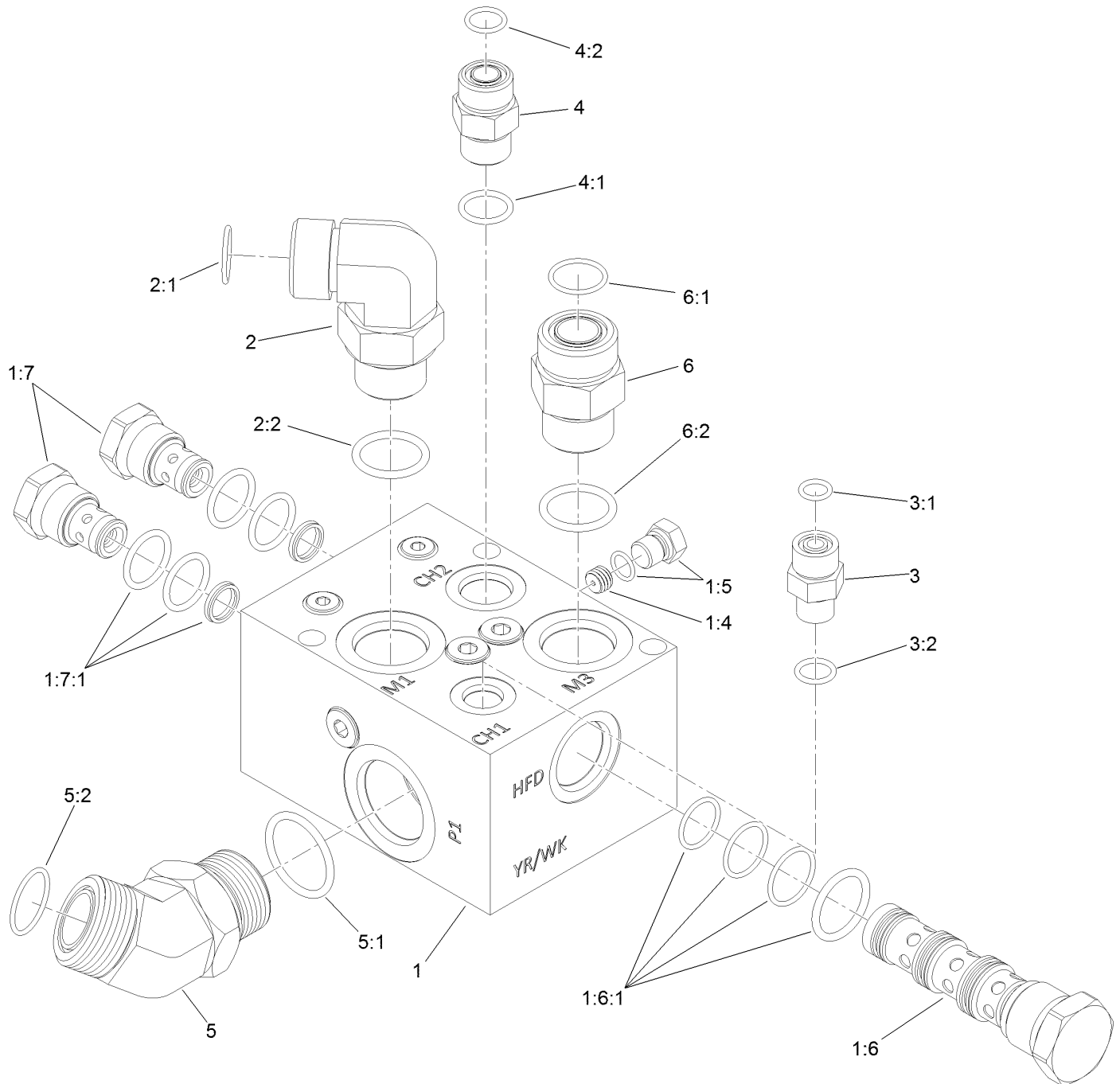


GM4500/4700 Automatic Flow Divider Assembly (continued)

<i>Ref.</i>	<i>Part Number</i>	<i>Qty.</i>	<i>Description</i>
1	121-3128	1	Flow Divider Manifold ASM
2	125-4561	1	Tube ASM
2:1	237-22	1	O-Ring
2:2	237-30	1	O-Ring
3	125-4564	1	Tube ASM

<i>Ref.</i>	<i>Part Number</i>	<i>Qty.</i>	<i>Description</i>
4	125-4588	1	Tube ASM
5	323-42	2	Screw-HH
6	104-8301	2	Nut-HF, NI
7	136-2910	1	Hose ASM

Flow Divider Manifold Assembly No. 121-3128

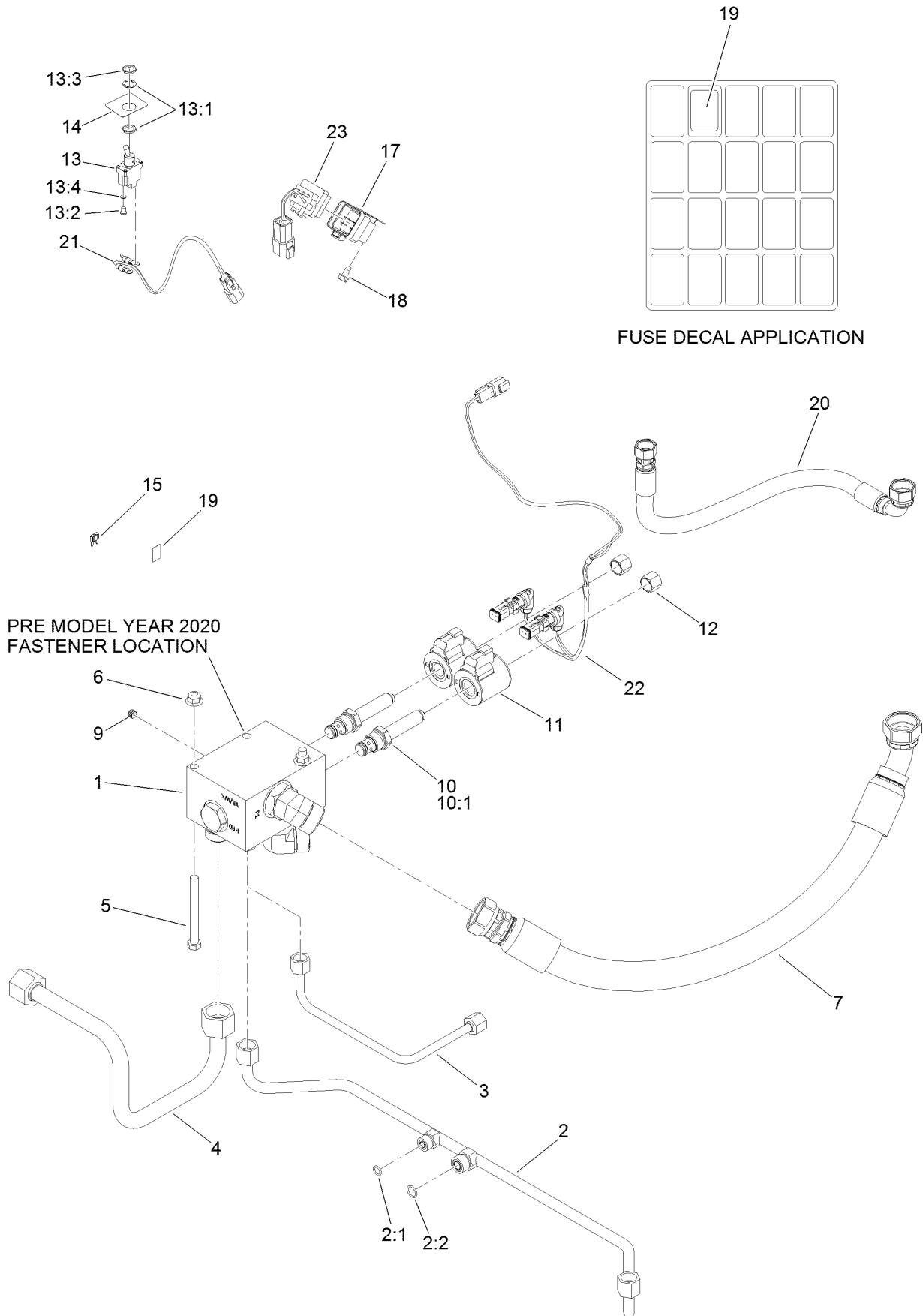


Flow Divider Manifold Assembly No. 121-3128 (continued)

<i>Ref.</i>	<i>Part Number</i>	<i>Qty.</i>	<i>Description</i>	<i>Ref.</i>	<i>Part Number</i>	<i>Qty.</i>	<i>Description</i>
1		1	Manifold-Flow Divider, 50/50 ●	3:1	237-22	1	O-Ring
1:4	112-6538	1	Orifice (.063 Inch)	3:2	237-42	1	O-Ring
1:5	117-0115	1	Plug	4	100-4890	1	Fitting-Check
1:6	125-4634	1	Valve-Flow Divider, 50/50	4:1	237-79	1	O-Ring
1:6:1	125-4338	1	Seal Kit	4:2	237-30	1	O-Ring
1:7	125-4333	2	Valve-Check	5	104-3509	1	Fitting-HYD, 45 DEG
1:7:1	125-4337	1	Seal Kit	5:1	237-146	1	O-Ring
2	340-142	1	Fitting-Elbow, 90 DEG	5:2	340-65	1	O-Ring
2:1	237-58	1	O-Ring	6	340-9	1	Fitting-STR
2:2	237-81	1	O-Ring	6:1	237-58	1	O-Ring
3	92-9258	1	Adapter-Check	6:2	237-81	1	O-Ring

● Not serviced separately

GM4500/4700 Manual Flow Divider Assembly



GM4500/4700 Manual Flow Divider Assembly (continued)

<i>Ref.</i>	<i>Part Number</i>	<i>Qty.</i>	<i>Description</i>	<i>Ref.</i>	<i>Part Number</i>	<i>Qty.</i>	<i>Description</i>
1	121-3128	1	Flow Divider Manifold ASM	13:2	218-588	3	Screw
2	125-4561	1	Tube ASM	13:3	218-589	1	Washer
2:1	237-22	1	O-Ring	13:4	3253-19	3	Washer-Lock
2:2	237-30	1	O-Ring	14	132-6104	1	Decal-Momentary
3	125-4564	1	Tube ASM	15	121-8866	1	Fuse-Mini Blade, 10 Amp
4	125-4588	1	Tube ASM	17	99-7430	1	Relay-Mini
5	323-42	2	Screw-HH	18	32104-17	1	Screw-HWH
6	104-8301	2	Nut-HF, NI	19	132-6185	1	Decal-Fuse, Momentary (4Wd)
7	136-2910	1	Hose ASM	20	136-2911	1	Hose ASM
9	110-8889	1	Plug-Orifice (0.020)	21	122-1712	1	Harness-Wire, Flow Divider Switch
10	132-6103	2	Valve	22	122-1717	1	Harness-Wire, Flow Divider Solenoid
10:1	132-6231	1	Seal Kit	23	122-1733	1	Harness-Wire, Flow Divider Relay
11	115-3021	2	Coil-12V				
12	130-8181	2	Nut-Coil (1/2-20 Unf-2B)				
13	122-0719	1	Switch-Toggle (On) - None - On				
13:1	218-498	2	Nut-Lock				

Notes:

Notes:



Count on it.