



Pump Support Kit for Greensmaster® 3200-D

Part No. 104-2069

Installation Instructions

1. Park traction unit on a level surface, set parking brake and stop engine. Remove the key from ignition.

CAUTION

POTENTIAL HAZARD

- If you leave the key in the ignition switch, someone could start the engine.

WHAT CAN HAPPEN

- Accidental starting of the engine could seriously injure you or other bystanders.

HOW TO AVOID THE HAZARD

- Remove the key from the ignition switch before you do any maintenance.

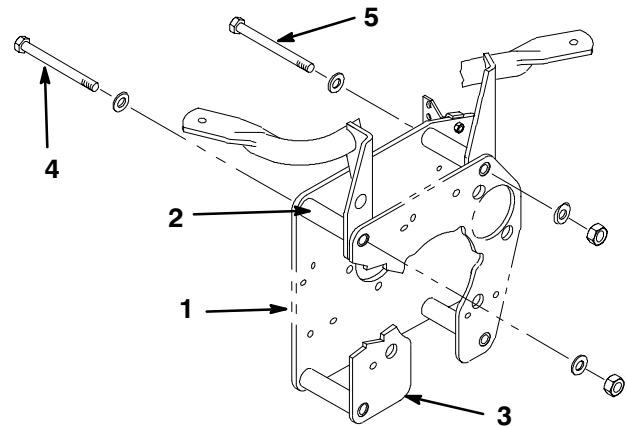


Figure 1

- | | |
|------------------|-----------------------|
| 1. Backing plate | 4. Top left capscrew |
| 2. Spacer | 5. Top right capscrew |
| 3. Pump plate | |
2. Remove top left capscrew, (2) washers and nut securing backing plate and spacer to pump plate (Fig. 1).
 3. Install new M12 x 140MM capscrew, (2) washers and nut (Fig. 1). Tighten securely.
 4. Remove top right capscrew, (2) washers and nut securing backing plate and spacer to pump plate (Fig. 1).
 5. Install new M12 x 140MM capscrew, washers and nut (Fig. 1). Tighten securely.
 6. Remove bottom left capscrew, (2) washers and nut securing backing plate and spacer to pump plate (Fig. 2).
 7. Loosely mount left brace and left engine bracket to backing plate, spacer and pump plate with a new M12 x 140MM capscrew and nut. Position components as shown in figure 2.
 8. Loosely mount left brace to underside of pump with a 3/8-16 x 3/4" lg. capscrew and flat washer (Fig. 2).
 9. Loosely mount engine bracket to engine with (2) M10-1.5 x 20 capscrews (Fig. 2).

10. Remove bottom right capscrew, (2) washers and nut securing backing plate and spacer to pump plate (Fig. 2).
11. Loosely mount right brace and right engine bracket to backing plate, spacer and pump plate with a new M12 x 140MM capscrew and nut. Position components as shown in figure 2.
12. Loosely mount right brace to underside of pump with a 3/8-16 x 3/4" lg. capscrew and flat washer (Fig. 2).
13. Loosely mount engine bracket to engine with (2) M10-1.5 x 20 capscrews (Fig. 2).
14. Tighten all capscrews securing braces and engine brackets.

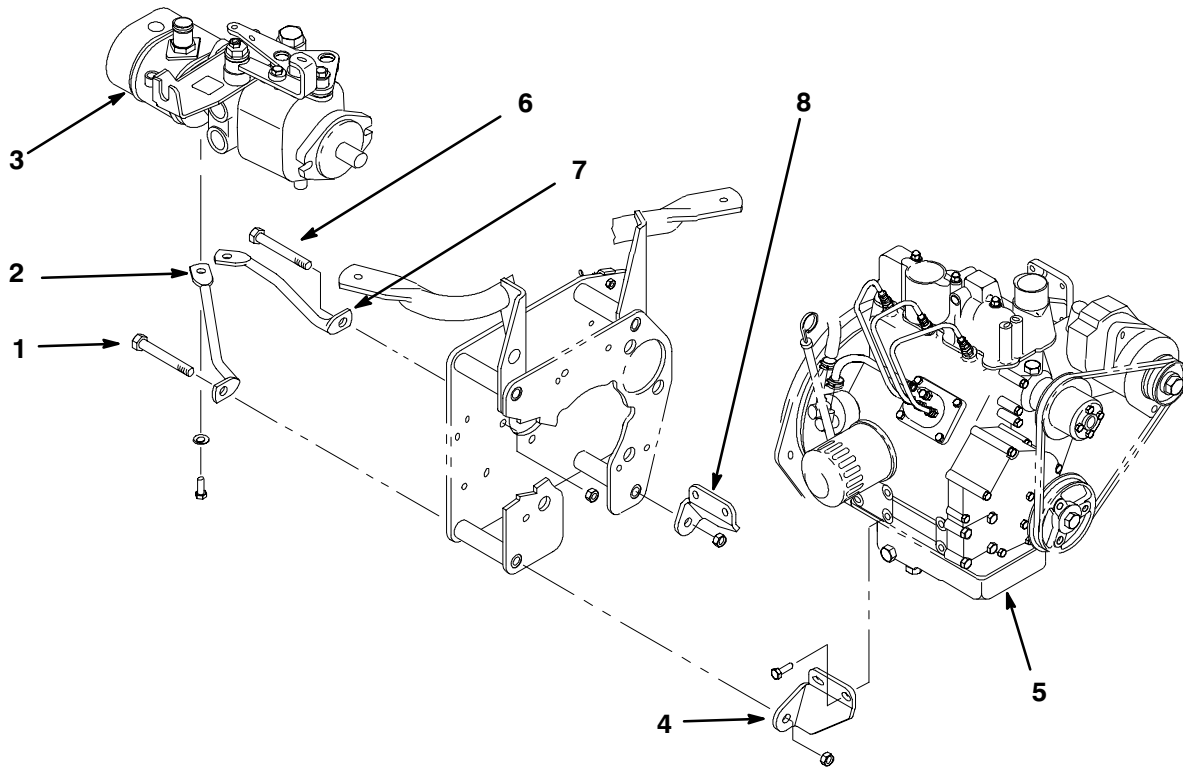


Figure 2

- | | | | |
|-------------------------|------------------------|--------------------------|-----------------------|
| 1. Bottom left capscrew | 3. Pump | 5. Engine | 7. Right brace |
| 2. Left brace | 4. Left engine bracket | 6. Bottom right capscrew | 8. Right engine brace |
-

15. Remove left capscrew, washer and nut securing pump flange to backing plate (Fig. 3).
16. Install new M10 x 1.75 x 40 capscrew, washer and nut (Fig. 3). Tighten securely.
17. Remove right capscrew, washer and nut securing pump flange to backing plate (Fig. 3).
18. Install new M10 x 1.75 x 40 capscrew, washer and nut (Fig. 3). Tighten securely.

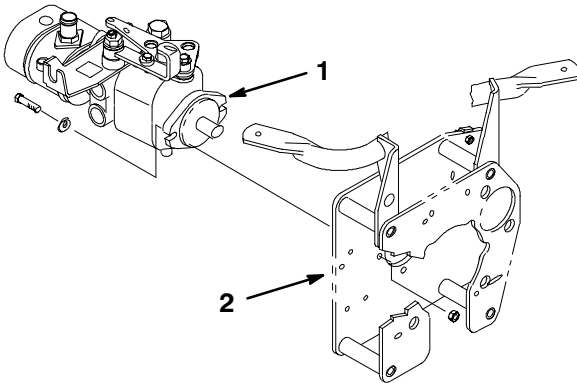


Figure 3

- | | |
|----------------|------------------|
| 1. Pump flange | 2. Backing plate |
|----------------|------------------|

19. Loosen jam nuts securing adjusting pin to spring bracket (Fig. 4).
20. Unhook spring from pump arm. Remove jam nuts from adjusting pin (Fig. 4). Retain jam nuts but discard spring and adjusting pin.

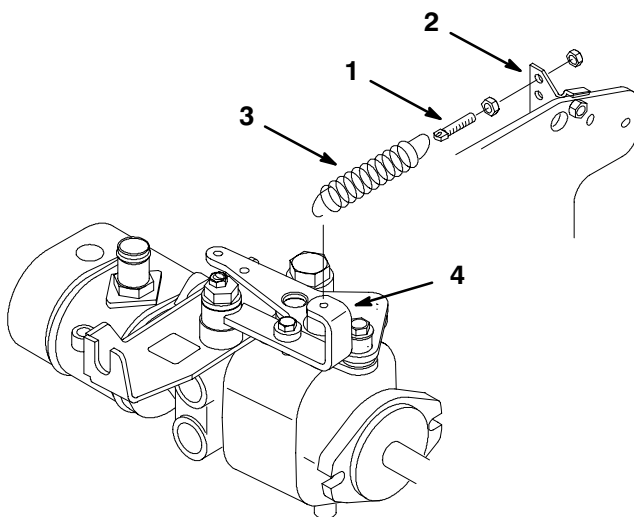


Figure 4

- | | |
|-------------------|-------------|
| 1. Adjusting pin | 3. Spring |
| 2. Spring bracket | 4. Pump arm |

21. Thread a jam nut onto new adjusting pin until the outer edge, of nut, is 1/2" from head of adjusting pin (Fig. 5).

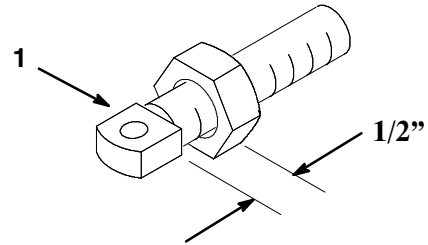


Figure 5

1. Adjusting pin

22. Insert hose dampener into new spring (Fig. 6).
23. Hook spring onto pump arm and adjusting pin (Fig. 6).
24. Secure adjusting pin to spring bracket with jam nut (Fig. 6).

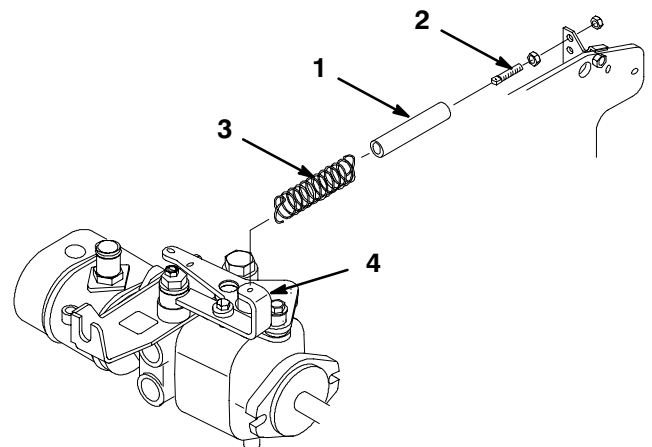


Figure 6

- | | |
|------------------|-------------|
| 1. Adjusting pin | 3. Pump arm |
| 2. Spring | |

