



48" Snow Blade

Lawn & Garden Tractor

Model No. 79253-210000001 and Up

Parts Catalog

Ordering Replacement Parts

To order replacement parts, please supply: the part number, the quantity, and the description of each part desired.

Understanding Reference Numbers

Each identified part in an illustration has a reference number. The reference number for a part also appears in the parts list, along with other information about the part.

This catalog uses two special reference number formats, one to indicate parts in a service assembly and another to indicate the quantity of a given part in an illustration.

Service Assembly Reference Numbers

Parts in service assemblies have reference numbers in the form **a:b**. The **a** represents the reference number of the entire service assembly and the **b** represents a sequential number unique to each part within the service assembly.

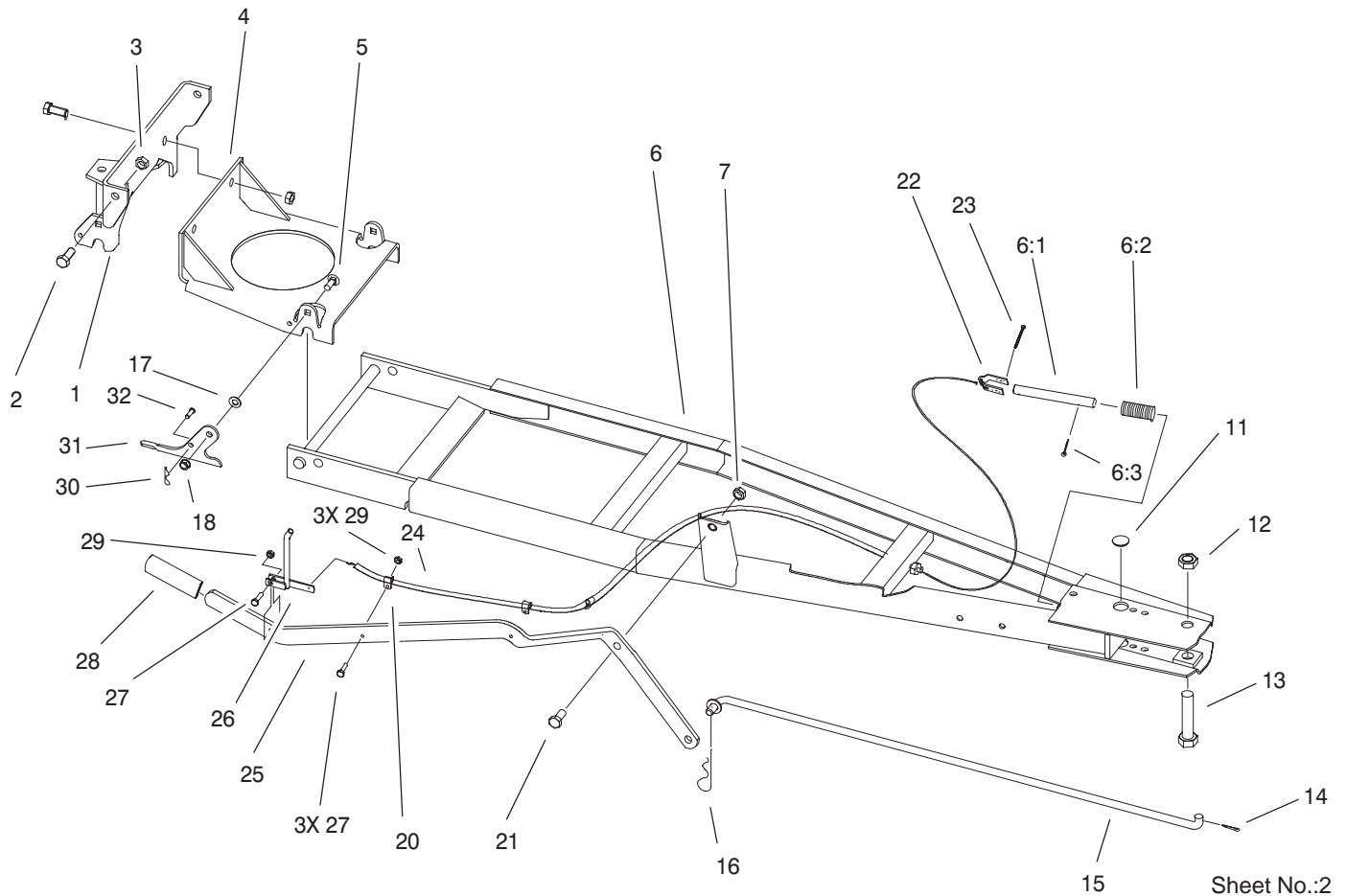
For example, a wheel assembly might be identified by reference number **6**, the tire by **6:1**, the valve by **6:2**, and the wheel by **6:3**. When you order the assembly identified by reference number **6**, you receive all parts identified by reference numbers **6:1**, **6:2**, and **6:3**. However, you may also order any part individually.

Reference numbers of this type appear in illustrations and in part lists.

Reference Numbers Indicating Quantity

In an illustration, if a reference number indicates more than one part, the reference number has the form **nX y**. The **n** represents the quantity of the part, the **X** is the multiplication symbol, and the **y** represents the reference number.

For example, in an illustration, the reference number **2X 37** means that two of the parts identified by reference number **37** are indicated.

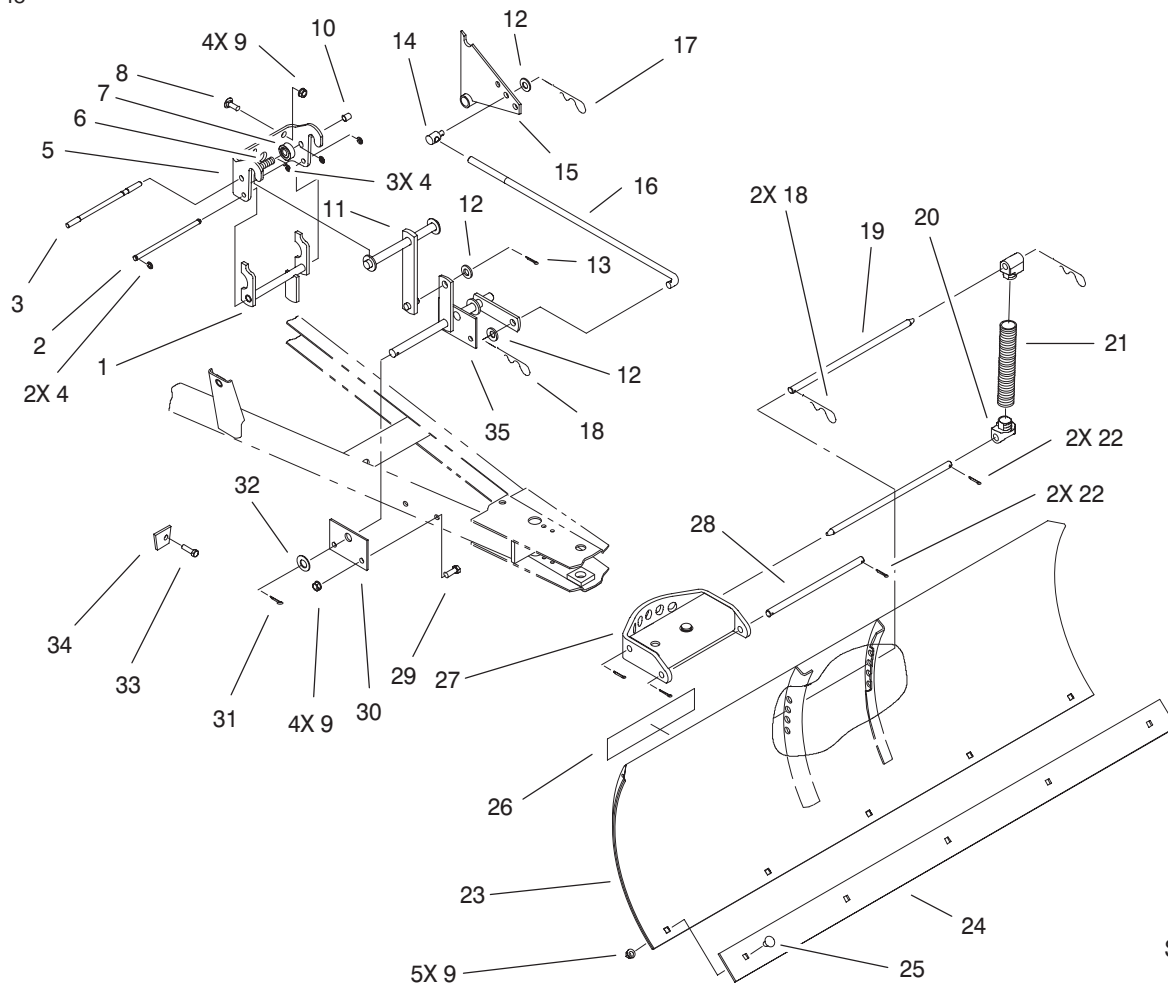


Sheet No.:2

Frame Assembly

Ref. No.	Part No.	Qty.	Description
1	93-1389-03	1	Bracket-Mounting
2	325-5	5	Screw-HH
3	3296-23	5	Nut-Lock, NI
4	100-8707-03	1	Bracket-Blade Mount
5	3231-25	2	Screw-CARR
6	104-1290-01	1	Blade Frame ASM
6:1	88-6520	1	Pin-Index
6:2	2354	1	Spring-Compression
6:3	3272-11	1	Pin-Cotter
7	3218-18	1	Nut-Jam
11	4944	2	Plug
12	9156404	1	Nut-Lock
13	3216-7	1	Screw-HH
14	3272-11	1	Pin-Cotter
15	79-4790	1	Rod
16	9335124	1	Pin-Hair
17	3256-24	2	Washer-Flat
18	3296-39	2	Nut-Lock, NI
20	2412-32	3	R-Clamp-Throttle/C oke
21	325-4	1	Screw-HH
22	94-7782	1	Bracket - Cable End
23	3272-12	1	Pin-Cotter
24	104-1289	1	Cable-Tension
25	104-5073-01	1	Lever-Blade
26	92-7036	1	Lever-Index

Ref. No.	Part No.	Qty.	Description
27	321-6	4	Screw-HH
28	5359	1	Grip
29	32146-17	4	Nut-Lock
30	9335044	2	Pin-Hair
31	104657	2	Plate-Latching
32	9321204	2	Pin-Clevis



Sheet No.:3

Blade Assembly

Ref. No.	Part No.	Qty.	Description
1	93-1613	1	Latch
2	101750	1	Rod-Latch Pivot
3	101751	1	Rod-Lock
4	105797	5	Ring-Retaining
5	78-1720-01	1	Hitch-Front
6	8616	1	Spring
7	101707	1	Lock
8	3231-22	4	Screw-CARR
9	3296-39	13	Nut-Lock, NI
10	105316	1	Cap-Plunger Rod
11	79-5430-01	1	Arm
12	3256-26	3	Washer-Flat
13	3272-7	1	Pin-Cotter
14	7736	1	Stud-Trunion
15	79-5510-01	1	Plate
16	100-8706	1	Rod
17	9335054	1	Pin-Hair
18	9335124	3	Pin-Hair
19	5120	2	Rod-Blade Pivot
20	88-2080-03	4	Lug-Spring
21	93-1611-03	2	Spring-Trip Return
22	3272-11	4	Pin-Cotter
23	78-1330-01	1	Blade ASM
24	93-1612-01	1	Plate - Blade Edge
25	3231-1	5	Screw-CARR
26	92-8748	1	Decal-Attachment

Ref. No.	Part No.	Qty.	Description
27	78-8760-01	1	Quadrant
28	4564	1	Rod-Lower Plated
29	323-6	4	Screw-HH
30	79-5490-01	1	Plate
31	3272-22	1	Pin-Cotter
32	3256-27	1	Washer-Flat
33	9267204	2	Screw
34	79-4770-01	2	Stop
35	79-5460-01	1	Arm-lift

