



Hydraulic Cooler Kit

Dingo[®] TX Attachment

Part No. 104–2800

Parts Catalog

Ordering Replacement Parts

To order replacement parts, please supply: the part number, the quantity, and the description of each part desired.

Understanding Reference Numbers

Each identified part in an illustration has a reference number. The reference number for a part also appears in the parts list, along with other information about the part.

This catalog uses two special reference number formats, one to indicate parts in a service assembly and another to indicate the quantity of a given part in an illustration.

Service Assembly Reference Numbers

Parts in service assemblies have reference numbers in the form **a:b**. The **a** represents the reference number of the entire service assembly and the **b** represents a sequential number unique to each part within the service assembly.

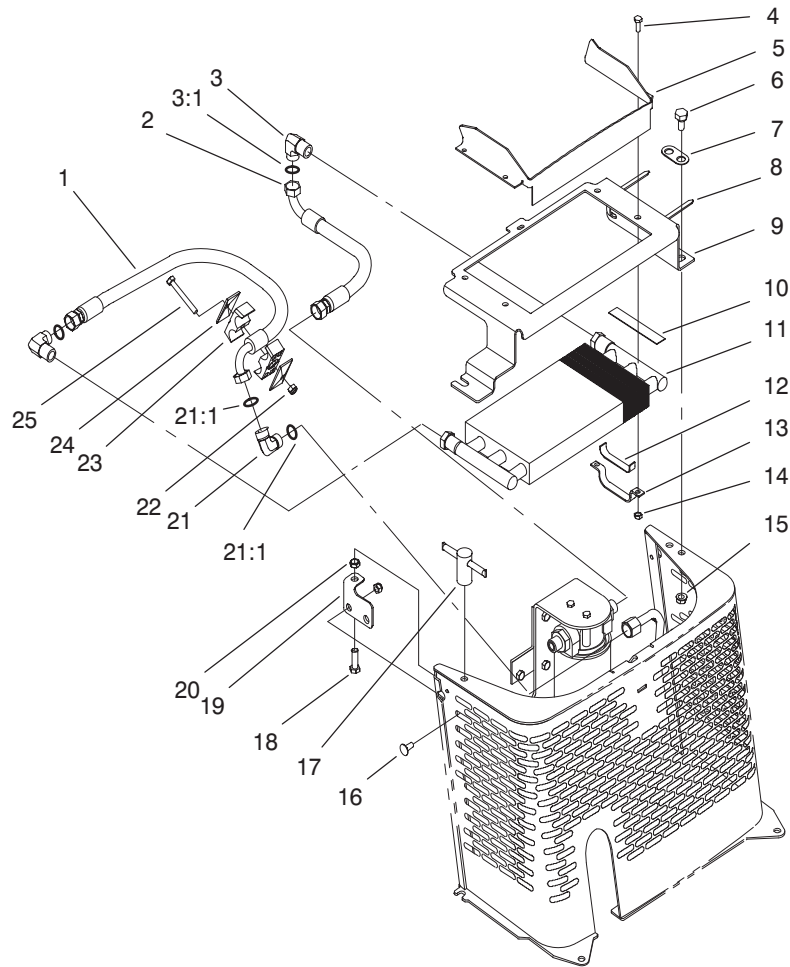
For example, a wheel assembly might be identified by reference number **6**, the tire by **6:1**, the valve by **6:2**, and the wheel by **6:3**. When you order the assembly identified by reference number **6**, you receive all parts identified by reference numbers **6:1**, **6:2**, and **6:3**. However, you may also order any part individually.

Reference numbers of this type appear in illustrations and in part lists.

Reference Numbers Indicating Quantity

In an illustration, if a reference number indicates more than one part, the reference number has the form **nX y**. The **n** represents the quantity of the part, the **X** is the multiplication symbol, and the **y** represents the reference number.

For example, in an illustration, the reference number **2X 37** means that two of the parts identified by reference number **37** are indicated.

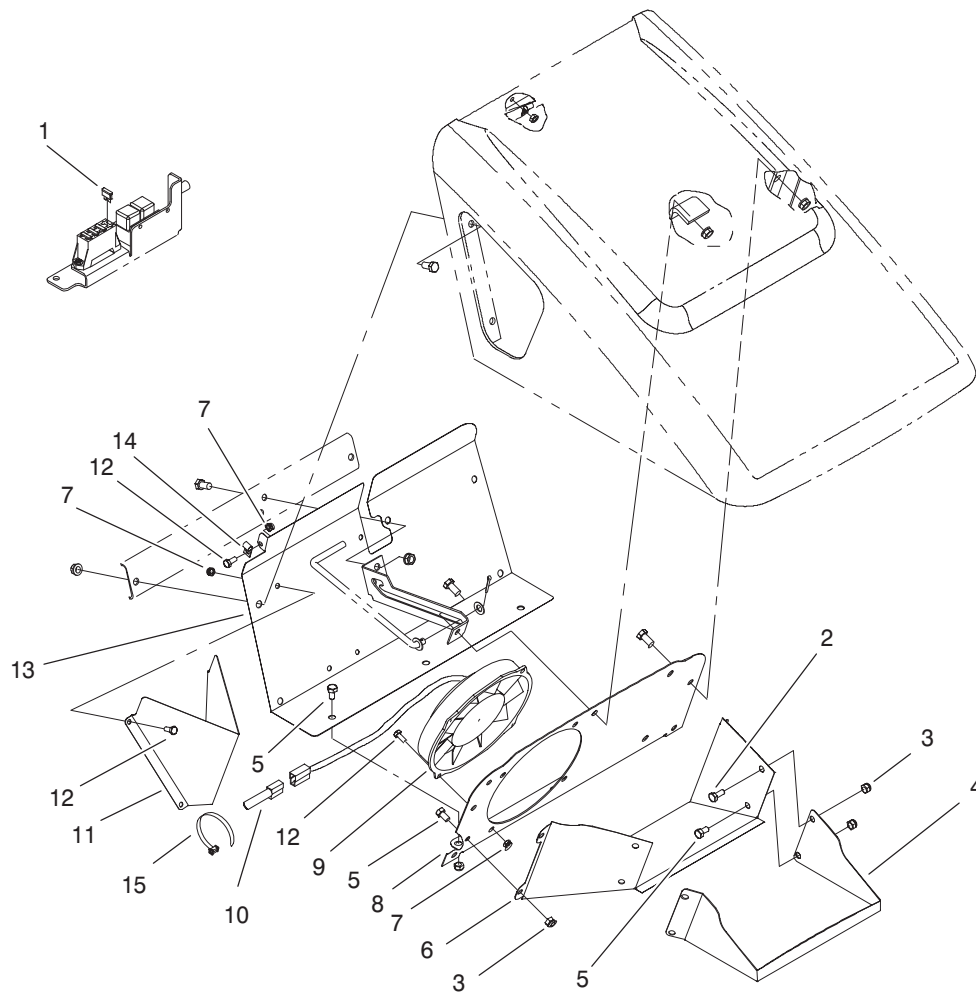


Sheet No.:2

Cooler Assembly

Ref. No.	Part No.	Qty.	Description
1	104-2807	1	Hydraulic Hose ASM
2	104-2806	1	Hydraulic Hose ASM
3	340-168	2	Adapter-Elbow, 90°
3:1	237-30	1	O-Ring
4	321-4	4	Screw-HH
5	104-2802-03	1	Shield-Cooler
6	46-3380	2	Bolt-Shoulder
7	104-2804	1	Washer-Pivot
8	3334-945	2	Tie-Cable
9	104-2801-03	1	Bracket-Cooler
10	94-9566	2	Pad-Footrest
11	24-0760	1	Cooler ASM
12	104-2816	2	Pad-Support
13	104-2803	2	Support-Cooler
14	3296-42	4	Nut-Lock
15	3296-39	2	Nut-Lock, NI
16	3230-31	2	Screw-CARR
17	104-2819	1	Holddown ASM
18	323-7	1	Screw-HH
19	104-2805-03	1	Bracket-Holddown
20	3218-3	1	Nut-Jam
21	340-163	1	Adapter-Elbow, 90°
21:1	237-30	2	O-Ring
22	3296-29	3	Nut-Lock, NI
23	56-7974	2	Clamp-Tube

Ref. No.	Part No.	Qty.	Description
24	69-9761	2	Coverplate
25	322-12	1	Screw-HH



Sheet No.:3

Hood and Baffle Assembly

Ref. No.	Part No.	Qty.	Description
1	109355	1	Fuse—15 Amp
2	322—3	2	Screw—HH
3	3296—29	11	Nut—Lock, NI
4	104—2813—03	1	Shroud—Fan, Front
5	322—2	9	Screw—HH
6	104—2812—03	1	Shroud—Fan
7	3296—16	9	Nut—Lock, NI
8	104—2814—03	1	Plate—Baffle, Fan
9	104—2809	1	Fan—12v
10	104—2808	1	Harness—Wire, Fan
11	104—2811—03	1	Baffle—Fan
12	321—3	9	Screw—HH
13	104—2815—03	1	Panel—Rack, Fan
14	2412—91	2	Clamp
15	3290—378	1	Tie—Strap

Ref. No.	Part No.	Qty.	Description

