



Blower Assembly

44" Vac/Baggers

Part No. 104–2489

Parts Catalog

Ordering Replacement Parts

To order replacement parts, please supply: the part number, the quantity, and the description of each part desired.

Understanding Reference Numbers

Each identified part in an illustration has a reference number. The reference number for a part also appears in the parts list, along with other information about the part.

This catalog uses two special reference number formats, one to indicate parts in a service assembly and another to indicate the quantity of a given part in an illustration.

Service Assembly Reference Numbers

Parts in service assemblies have reference numbers in the form **a:b**. The **a** represents the reference number of the entire service assembly and the **b** represents a sequential number unique to each part within the service assembly.

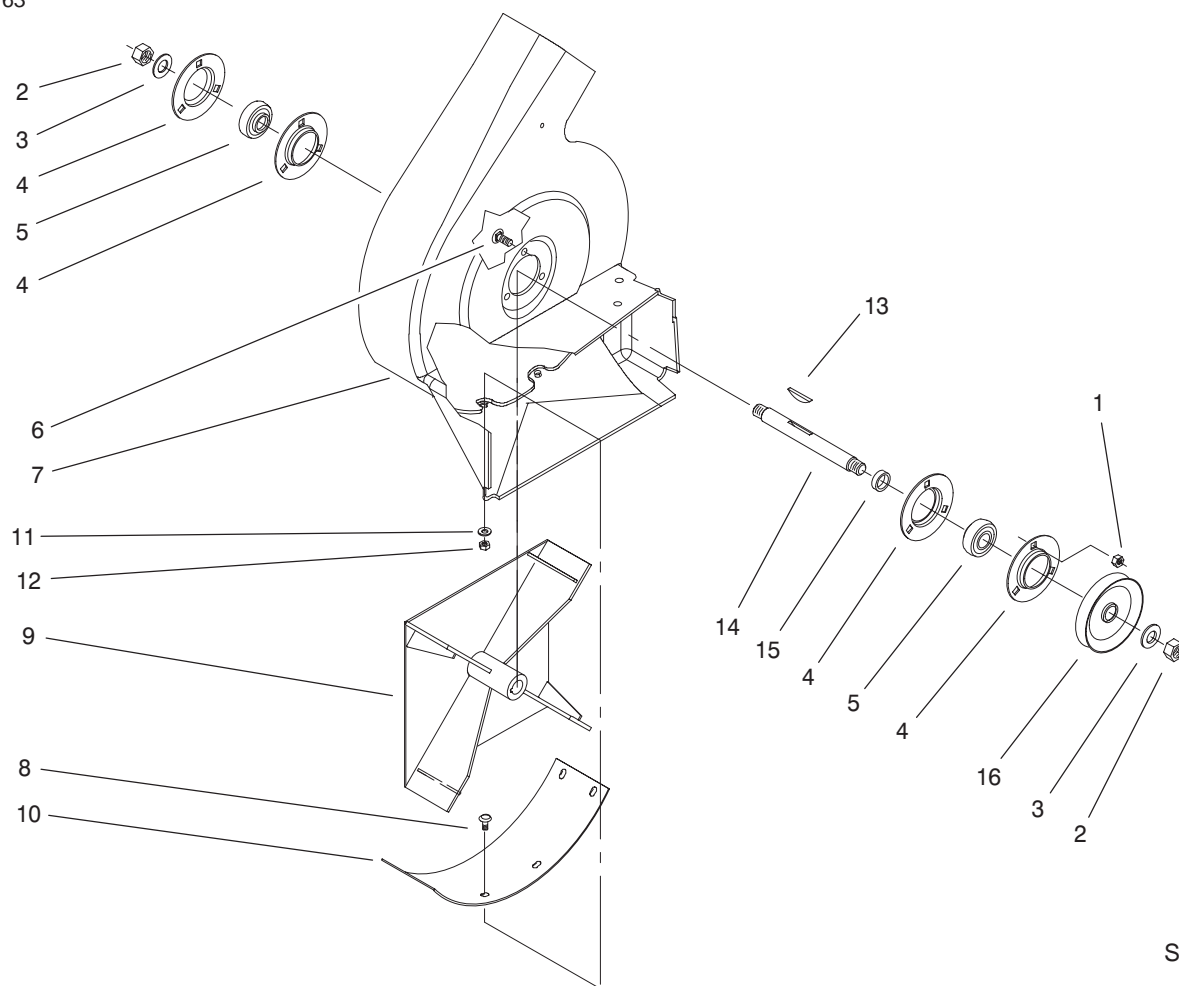
For example, a wheel assembly might be identified by reference number **6**, the tire by **6:1**, the valve by **6:2**, and the wheel by **6:3**. When you order the assembly identified by reference number **6**, you receive all parts identified by reference numbers **6:1**, **6:2**, and **6:3**. However, you may also order any part individually.

Reference numbers of this type appear in illustrations and in part lists.

Reference Numbers Indicating Quantity

In an illustration, if a reference number indicates more than one part, the reference number has the form **nX y**. The **n** represents the quantity of the part, the **X** is the multiplication symbol, and the **y** represents the reference number.

For example, in an illustration, the reference number **2X 37** means that two of the parts identified by reference number **37** are indicated.



Sheet No.:3

Blower Assembly

Ref. No.	Part No.	Qty.	Description
1	32128-20	6	Nut-HF
2	3220-6	2	Nut-Jam
3	3253-8	2	Washer-Lock/Sp
4	251-341	4	Flange
5	251-288	2	Bearing-Ball
6	3230-16	6	Screw-HH
7	93-8005	1	Housing-Vac, Blower
8	3229-11	6	Screw-CARR
9	79-4300-03	1	Impeller
10	79-7170	1	Cover-Blower, Bottom
11	3256-22	6	Washer-Flat
12	3296-56	6	Nut-Lock, NI
13	3257-40	1	Key-Hi-Pro
14	79-1470	1	Shaft-Blower
15	92-9684	1	Spacer
16	79-1460	1	Pulley-blower

Ref. No.	Part No.	Qty.	Description