



Debris Blower

For Groundsmaster® 300 Series

Model No. 30855-20000001 and Up

Parts Catalog

Ordering Replacement Parts

To order replacement parts, please supply: the part number, the quantity, and the description of each part desired.

Understanding Reference Numbers

Each identified part in an illustration has a reference number. The reference number for a part also appears in the parts list, along with other information about the part.

This catalog uses two special reference number formats, one to indicate parts in a service assembly and another to indicate the quantity of a given part in an illustration.

Service Assembly Reference Numbers

Parts in service assemblies have reference numbers in the form **a:b**. The **a** represents the reference number of the entire service assembly and the **b** represents a sequential number unique to each part within the service assembly.

For example, a wheel assembly might be identified by reference number **6**, the tire by **6:1**, the valve by **6:2**, and the wheel by **6:3**. When you order the assembly identified by reference number **6**, you receive all parts identified by reference numbers **6:1**, **6:2**, and **6:3**. However, you may also order any part individually.

Reference numbers of this type appear in illustrations and in part lists.

Reference Numbers Indicating Quantity

In an illustration, if a reference number indicates more than one part, the reference number has the form **nX y**. The **n** represents the quantity of the part, the **X** is the multiplication symbol, and the **y** represents the reference number.

For example, in an illustration, the reference number **2X 37** means that two of the parts identified by reference number **37** are indicated.

Contents

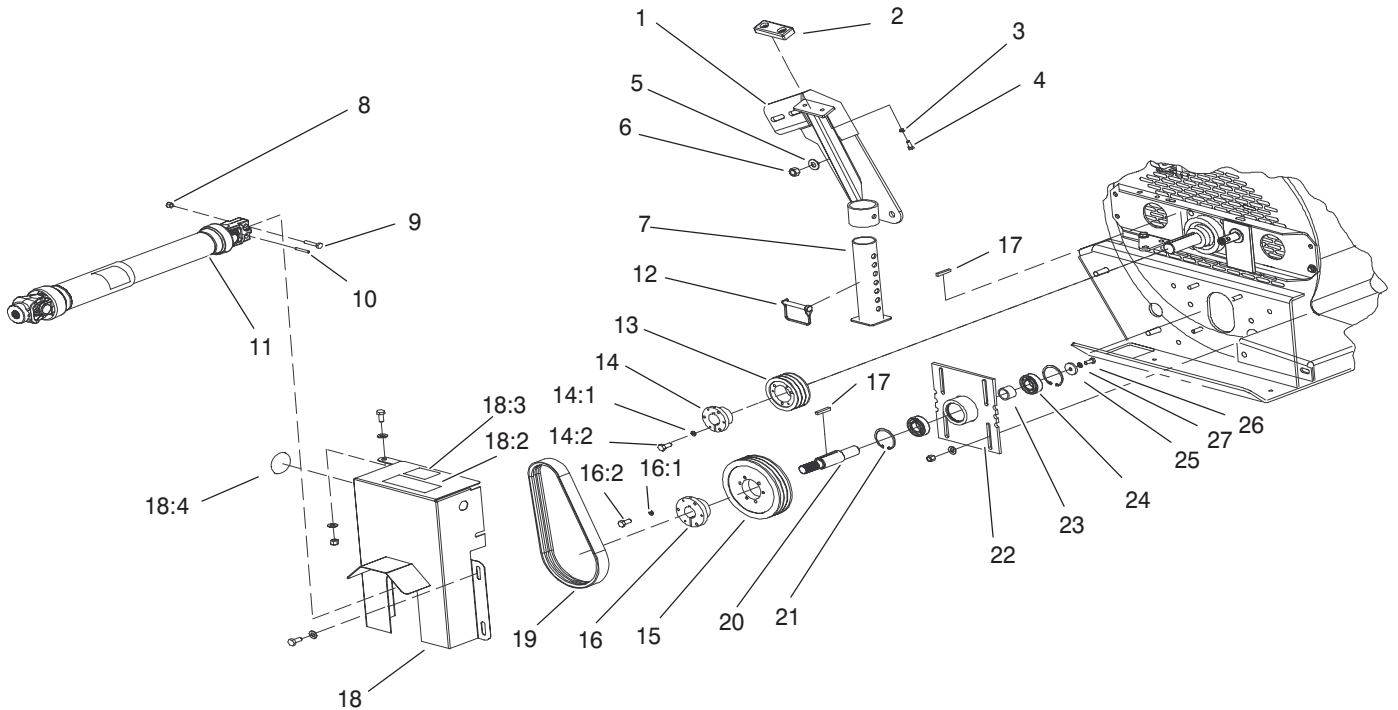
Description	Page	Description	Page
Blower and Fan Assembly	3	Drive Shaft Assembly No. 104-0264	6
Bearing and Screen Assembly	4	Castor Assembly	7
Drive Shaft and Belt Assembly	5		

Part Description Abbreviations

Part descriptions in this catalog may include the following abbreviations.

Abbreviation	Meaning	Abbreviation	Meaning
AR	as required	INC	incorporated
ASM	assembly	LH	left hand
CARR	carriage	NI	nylon insert
DEG	degrees	PPH	Phillips pan head
FH	flat head	PTH	Phillips truss head
GA	gauge	PTO	power take off
HF	hex flange	RH	right hand
HH	hex head	SFH	slotted fillister head
HHF	hex head flange	SHH	slotted hex head
HLH	hex lag head	SQH	square head
HJ	hex jam	SHWH	slotted hex washer head
HOC	height-of-cut	SPH	slotted pan head
HS	hex socket	SRH	slotted round head
HSBH	hex socket button head	STD	standard
HSFH	hex socket flat head	TAP	self tapping
HSH	hex socket head	TTH	Torx truss head
HWH	hex washer head	WH	wing head
HWHTF	hex washer head thread forming		

PROTOTYPE

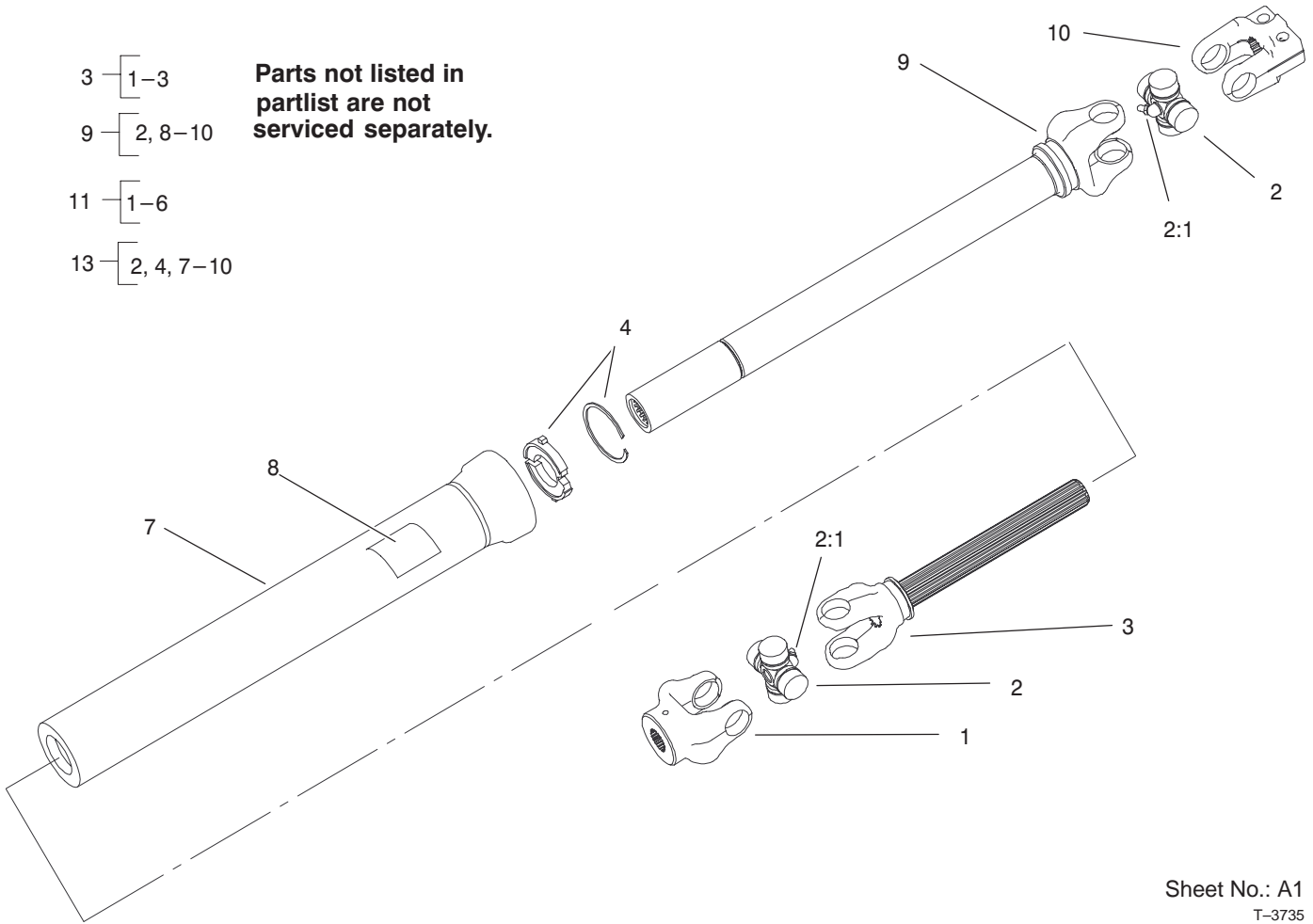


Sheet No.: 4

Drive Shaft and Belt Assembly

Ref. No.	Part No.	Qty.	Description
1	100-4084-01	1	Arm-Lift
2	86-5350	1	Bumper-Rubber
3	3253-3	2	Washer-Lock/Sp
4	321-4	2	Screw-HH
5	3256-26	2	Washer-Flat
6	3217-9	2	Nut-Hex
7	100-4097-01	1	Stand-ASM
8	3296-29	2	Nut-Lock, NI
9	322-7	2	Screw-HH
10	32121-34	1	Pin-Roll
11	104-0264	1	Drive Shaft ASM
12	93-4696	1	Pin - Snapper
13	95-0883	1	Pulley - 3.65
14	95-0884	1	Hub
14:1	3253-18	3	Washer-Lock/Sp
14:2	32104-96	3	Screw-HH
15	104-0271	1	Pulley-5.6
16	95-0882	1	Hub
16:1	3253-18	3	Washer-Lock/Sp
16:2	32104-96	3	Screw-HH
17	67-7490	2	Key
18	100-4079	1	Cover-Belt
18:2	98-3113	1	Decal - Caution
18:3	99-4487	1	Decal - Grease
18:4	58-6520	1	Decal-Grease
19	104-0309	1	V-Belt

Ref. No.	Part No.	Qty.	Description
20	94-8973	1	Shaft
21	32120-8	2	Ring-Snap
22	100-4030-01	1	Tensioner ASM
23	94-8972	1	Spacer - Bearing
24	94-8978	2	Bearing
25	71-5320	1	Engine Support Washer
26	33114-020	1	Screw-HH
27	3253-4	1	Washer-Lock



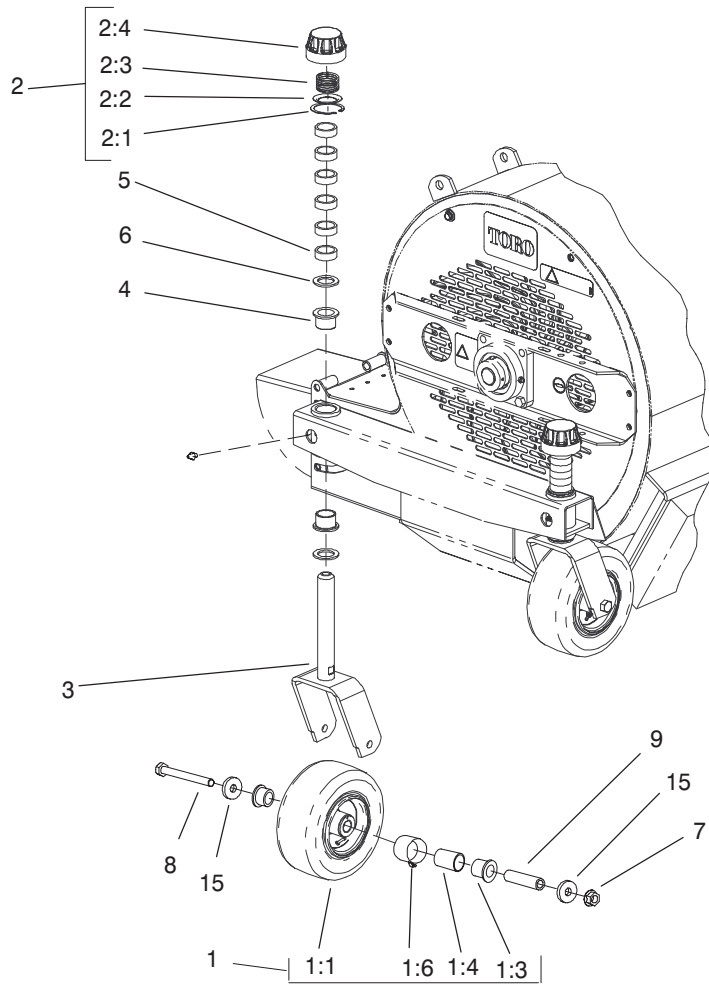
Sheet No.: A1
T-3735

Drive Shaft Assembly No. 104-0264

Ref. No.	Part No.	Qty.	Description
1	62-3800	1	Yoke-End
2	54-9180	2	U-Joint Kit
2:1	62-3820	1	Fitting-Grease
3	104-0254	1	Yoke & Shaft
4	93-9958	1	Kit - Nylon Repair
7	104-0257	1	Inner Guard
8	93-7283	1	Decal - Safety Sign
9	104-0255	1	Yoke, Tube, & Slip Sleeve
10	54-9040	1	Yoke-End
11	104-0253	1	Joint & Shaft Half ASM w/Guard
13	104-0252	1	Joint & Tube Half ASM w/Guard

Ref. No.	Part No.	Qty.	Description

PROTOTYPE



*16-18
Used to mount
to traction unit

Sheet No.: 5

Castor Assembly

Ref. No.	Part No.	Qty.	Description	Ref. No.	Part No.	Qty.	Description
1	99-1268	2	Castor Wheel ASM				
1:1	93-9939	1	Tire				
1:3	62-5580	2	Bearing-Outside				
1:4	62-5570	1	Bearing-Roller				
*1:5	100-5832	1	Tube w/ Valve				
1:6	302-11	1	Fitting-Lube, 45°				
2	92-8862	2	Cap ASM-HOC				
2:1	92-5581	1	Ring-Retaining				
2:2	92-5583	1	Washer-Cap				
2:3	92-5584	1	Spring-Compression				
2:4	92-8861	1	Cap-HOC				
3	98-7921	2	Castor Fork				
4	94-1291	4	Bushing-Special				
5	63-0070	12	Spacer				
6	3-6781	4	Washer-Thrust				
7	32128-23	2	Nut-HF				
8	325-19	2	Screw-HH				
9	68-8980	2	Spanner-Tire				
15	70-8040	4	Washer				
*16	323-7	4	Bolt				
*17	3256-24	8	Washer				
*18	3296-39	4	Nut				

* Not illustrated



PROTOTYPE