



Vac-Bagger

Wheelhorse® 42" and 48" Mowers for Classic Garden Tractors

Model No. 79301—210000001 & Up

Operator's Manual

Contents

	Page
Introduction	2
Safety	3
Safety Decals	3
Setup	3
Loose Parts	3
Preliminary Preparation	5
Preparing the Tractor	5
Preparing the Mower	6
Installing the Vac-Bagger	9
Removing the Bagger	13
Operation	16
Using the Full Bag Tester	16
Emptying the Grass Bags	17
Adjusting the Height-of-Cut	17
Clearing Obstructions from the Bagger	17
Bagging Tips	18
Maintenance	19
Recommended Maintenance Schedule	19
Cleaning the Bagger	19
Inspecting the Bagger	19
Caring for the Grass Bags	20
Storage	20

Introduction

Thank you for purchasing a Toro product.

All of us at Toro want you to be completely satisfied with your new product, so feel free to contact your local Authorized Service Dealer for help with service, genuine replacement parts, or other information you may require.

Whenever you contact your Authorized Service Dealer or the factory, always know the model and serial numbers of your product. These numbers will help the Service Dealer or Service Representative provide exact information about your specific product. You will find the model and serial number plate at the location shown in Figure 1.

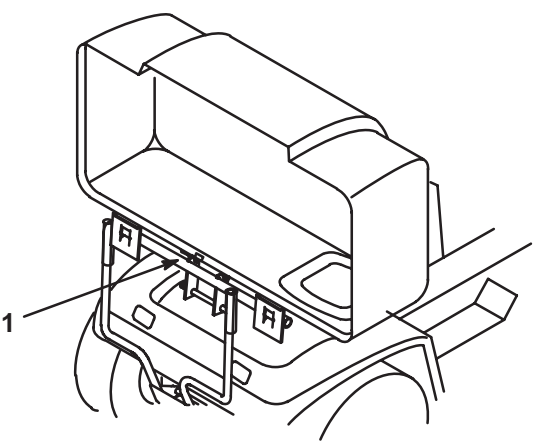


Figure 1

1. Model and serial number plate

For your convenience, write the product model and serial numbers in the space below.

<p>Model No: _____</p> <p>Serial No. _____</p>
--

Read this manual carefully to learn how to operate and maintain your product correctly. Reading this manual will help you and others avoid personal injury and damage to the product. Although we design, produce and market safe, state-of-the-art products, you are responsible for using the product properly and safely. You are also responsible for training persons, who you allow to use the product, about safe operation.

The warning system in this manual identifies potential hazards and has special safety messages that help you and others avoid personal injury, even death. **Danger**, **Warning**, and **Caution** are signal words used to identify the level of hazard. However, regardless of the hazard, be extremely careful.

Danger signals an extreme hazard that will cause serious injury or death if the recommended precautions are not followed.

Warning signals a hazard that may cause serious injury or death if the recommended precautions are not followed.

Caution signals a hazard that may cause minor or moderate injury if the recommended precautions are not followed.

Two other words are also used to highlight information. **Important** calls attention to special mechanical information, and **Note** emphasizes general information worthy of special attention.

Safety

Safety Decals



Safety decals and instructions are easily visible to the operator and are located near any area of potential danger. Replace any decal that is damaged or lost.



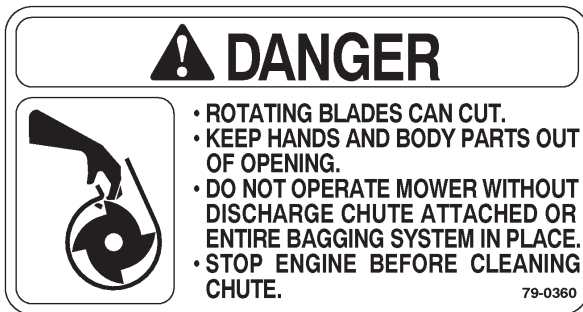
92-7113



Molded into the Belt Cover



92-7108



Molded into the Blower and Belt Cover



Molded into the Belt Cover

Setup

Loose Parts

Note: Use the chart below to identify parts used for assembly.

Description	Qty.	Use
Support bracket, left	1	Install the bagger brackets to the tractor
Support bracket right	1	
Bolt, 5/16 x 7/8 in.	4	
Locknut, 5/16 in.	4	
Leveler assembly	1	Install the leveler assembly to the mower
Grass baffle with 1 hole	1	Install the grass baffle (42 in. mower only)
Carriage bolt, 3/8 x 1 in.	1	
Locknut, 3/8 in.	1	
Grass baffle with 2 holes	1	Install grass baffle (48 in mower with 7904082 or lower serial number)
Carriage bolt, 5/16 x1 in.	2	
Locknut, 5/16 in.	2	
Double groove pulley	1	Install the blower drive
Pivot support	1	Install the blower pivot support to the mower
Bolt, 5/16 x 3/4 in.	1	
Flange nut, 5/16 in.	1	
Blower assembly	1	Assemble the blower
Spring	1	
Bolt, #10 x 3/4 in.	1	
Washer, 7/32 in.	2	
Nut, #10	2	
Latch (long—48 in. mower only)	1	
Latch (short—42 in. mower only)	1	
Bolt, 1/4 x 3/4 in.	1	
Washer, 1/4 in.	1	
Locknut, 1/4 in.	1	
Bagger cover	1	Assemble the bagger
Indicator rod	1	
Handle	1	
Jam nut, 1/4 in.	1	
Clips	2	
Pan head bolt, 1/4 in. x 5/8 in	2	
Lock nut, 1/4 in.	4	
Frame hinge assembly	1	

Description	Qty.	Use
Discharge tube	1	Assemble the knob to the discharge chute
Knob	1	
Washer, 7/32 in.	1	
Bolt, #10 x 5/8 in.	1	
Belt cover (42 in. mower)	1	Install the belt cover
Belt cover (48 in. mower)	1	
Belt cover bracket (42 in. mower)	1	
Belt cover bracket (48 in. mower)	1	
Flange-head bolt, 1/4 x 1/2 in.	5	
Flange-head bolt, 1/4 x 3/8 in.	3	
Blower belt cover	1	
Bolt, 1/4 x 5/8 in.	2	
Locknut, 1/4 in.	2	
Spring	1	Install the counterbalance spring
Chain	1	
Carriage bolt, 5/16 x 1-1/4 in.	1	
Washer, 5/16 in.	3	
Bagger mount	1	Install the bags
Hairpin cotter	2	
Bag	2	

Preliminary Preparation

1. Park the tractor and mower on a level surface, disengage the blade control (PTO), set the parking brake, stop the engine, and remove the ignition key.
2. Lower the mower to its lowest position and remove the mower from the tractor. Refer to the mower *Operator's Manual* for removal instructions.
3. Thoroughly clean the mower. All debris must be removed to ensure that parts will fit the mower properly.

Preparing the Tractor

Installing the Bagger Support Brackets

1. Remove and discard the 4 bolts and nuts from the rear of the tractor frame (Fig. 2).

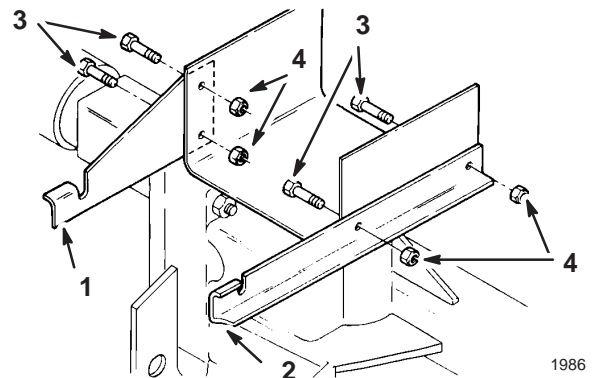


Figure 2

1. Support bracket LH
 2. Support bracket RH
 3. Bolt, 5/16 x 7/8 in.
 4. Locknut, 5/16 in.
2. Mount the 2 support brackets against the tractor frame (Fig 2) with 4 bolts (5/16 x 7/8 in.) and locknuts (5/16 in.).

Place the wide bracket on the left side and the narrow bracket on the right side.

Note: Brackets can remain on the tractor even when the bagger attachment is not being used.

Preparing the Mower

Removing the Discharge Chute

1. Remove the discharge chute from the mower (Fig. 3).

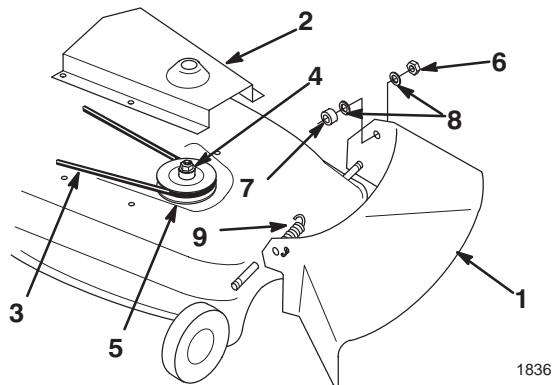


Figure 3

- | | |
|------------------------|---------------------|
| 1. Discharge chute | 6. Jam nut, 3/8 in. |
| 2. Belt cover | 7. Rubber bushing |
| 3. Blade drive belt | 8. Plastic washers |
| 4. Nut and lock washer | 9. Torsion spring |
| 5. Single pulley | |

2. Remove the belt cover from the right side (Fig. 3).

Note: Save all parts and hardware for use when using the mower to side discharge.

Installing the Leveling Bar

1. Remove the cotter pins securing the leveling assembly to the mower (Fig. 4).

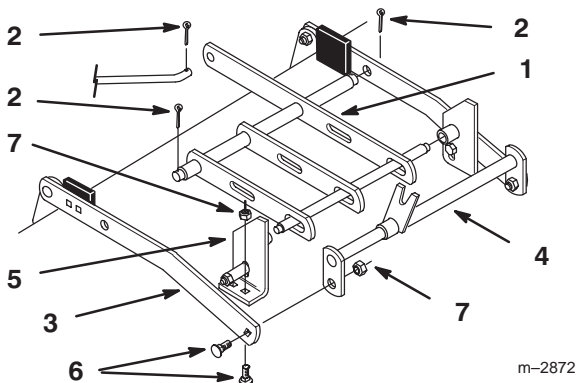


Figure 4

- | | |
|----------------------------|------------------|
| 1. Leveling assembly | 5. Right bracket |
| 2. Cotter pin | 6. Bolt |
| 3. Right hand leveling bar | 7. Locknut |
| 4. Front mounting bar | |

2. Remove the hardware securing the front mounting bar to the right hand leveling bar (Fig. 4).
3. Remove the hardware securing the right bracket to the mower and remove the leveling assembly (Fig. 4).
4. Replace the leveling assembly with the new one containing three bars (Fig. 4).
5. Secure the right hand bracket to the mower with previously removed hardware (Fig. 4).
6. Attach the front mounting bar to the right hand leveling bar with previously removed hardware (Fig. 4).
7. Install the cotter pins in the leveling assembly (Fig. 4).

Installing the Mower Baffle

Important The mower baffle is not required on 48 in. mowers with a serial number of 7904083 or higher.

1. Remove and discard the bolt(s) and nut(s) at the end of the grass plate inside the mower near the back edge of the discharge opening.
2. Select the appropriate grass baffle (42 in. mower—single hole or 48 in. mower—two holes).
3. Install the grass baffle tight against the grass plate with the top edge up against inside of the mower.
4. Install the grass baffle as follows:
 - On 42 in. mowers, secure the grass baffle (Fig. 5) with a carriage bolt (3/8 x 1 in.), washer (13/32 in.), and locknut (3/8 in.).

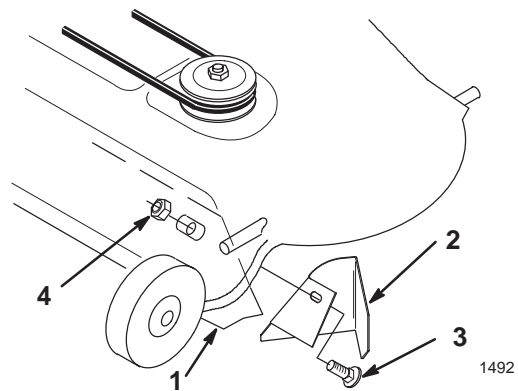


Figure 5

- | | |
|--------------------------------|-------------------------------|
| 1. Grass plate | 3. Carriage bolt, 3/8 x 1 in. |
| 2. Grass baffle (42 in. mower) | 4. Nut, 3/8 in. |

- On 48 in. mowers, secure the grass baffle (Fig. 6) with 2 carriage bolts (5/16 x 1 in.) and locknuts (5/16 in.).

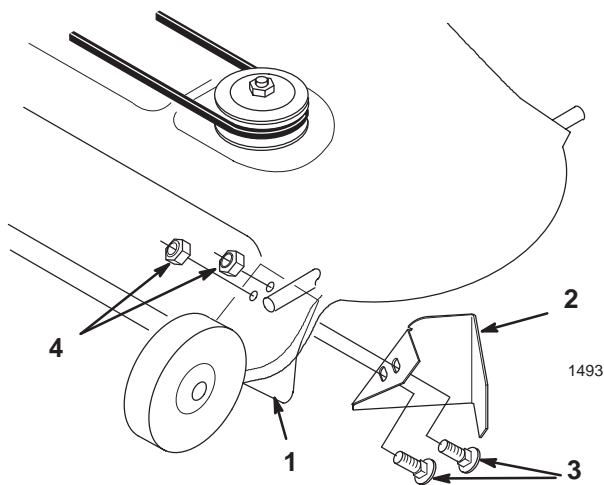


Figure 6

- | | |
|--------------------------------|--------------------------------|
| 1. Grass plate | 3. Carriage bolt, 5/16 x 1 in. |
| 2. Grass baffle (48 in. mower) | 4. Nut, 5/16 in. |

5. Rotate the blade and check for clearance with the baffle.
6. If necessary, adjust the baffle so the blade does not hit it.

Installing the Blower Drive Pulley

1. Pull on the mower idler assembly to release the belt tension and remove the blade drive belt from the right side pulley (Fig. 7).

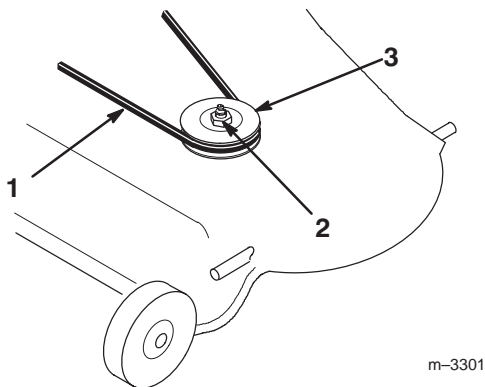


Figure 7

- | | |
|------------------------|------------------|
| 1. Blade drive belt | 3. Single pulley |
| 2. Nut and lock washer | |

2. Remove the nut and lock washer from the right hand blade spindle (Fig. 7).

Note: Block the blade with a piece of wood to stop it from turning while you remove the pulley nut. If the blade slips, hold the hex portion of the spindle above the blade with a wrench.

Note: When the nut is removed, the shaft is free to drop out of the spindle. Support the spindle and blade from the bottom side.

3. Remove the single pulley (Fig. 7).
4. Select the proper diameter top double pulley as follows:
 - 42 in. mower—3-1/4 in. pulley
 - 48 in. mower—3-3/4 in. pulley
5. Slide the new double pulley onto the spindle shaft with the word Top on the pulley facing up.
6. Secure the pulley with the lock washer and nut removed in step 2 (Fig. 8).

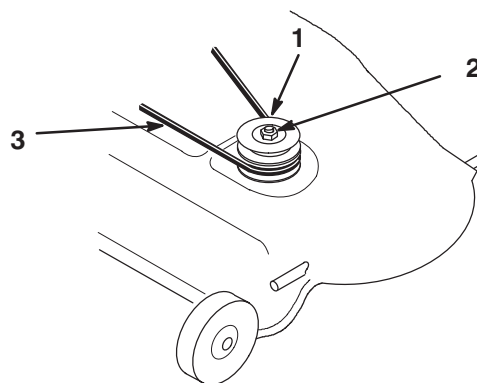


Figure 8

- | | |
|--------------------------------------|------------------------|
| 1. Double pulley (note the word Top) | 2. Lock washer and nut |
| | 3. Mower belt |

7. Torque the nut to 50 to 75 ft.-lb. (68 to 101 N·m).
8. Install the existing mower belt by rotating it onto the bottom pulley (Fig. 8).

Note: Ensure that the mower belt is properly located on idler and pulleys.

Installing the Blower Pivot Support

1. Select the proper hole in the pivot support (42 in mower—outside or 48 in. mower—inside) and slide it over the threaded stud welded to the front of the mower near the discharge opening (Fig. 9).

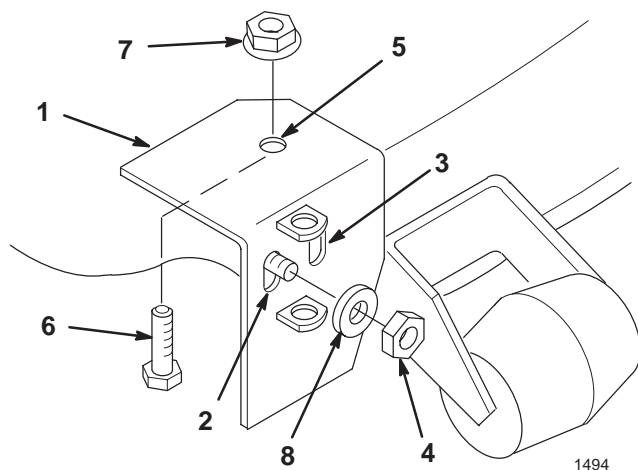


Figure 9

- | | |
|--|--|
| 1. Pivot support | 5. Drill 11/32 in. dia. hole |
| 2. Mounting hole (42 in. mower) | 6. Bolt, 5/16 x 3/4 in. |
| 3. Mounting hole (48 in. mower) | 7. Flange nut, 5/16 in. |
| 4. Jam nut, 3/8 in. (removed from the discharge chute) | 8. Plastic washer (removed from the discharge chute) |
2. Align the pivot support parallel with the front curved edge and tight against the top of the mower (Fig. 9). Clamp it in this position.
 3. Drill a hole (11/32 in. dia.) in the top of the mower using the pivot support as a guide.
 4. Secure the pivot support to the mower with a bolt (5/16 x 3/4 in.), pushed through from the underside of the mower, and a flange nut (Fig. 9).
 5. Place the jam nut and plastic washer removed from discharge chute snug onto the stud. Do not overtighten the jam nut.

Assembling the Blower

1. Install the long hook end of the tension spring and nut (#10) onto a bolt (#10 x 3/4 in.). Thread the nut to within 1/8 in. from the head end of the bolt, leaving enough room for the spring to rotate freely (Fig. 10).

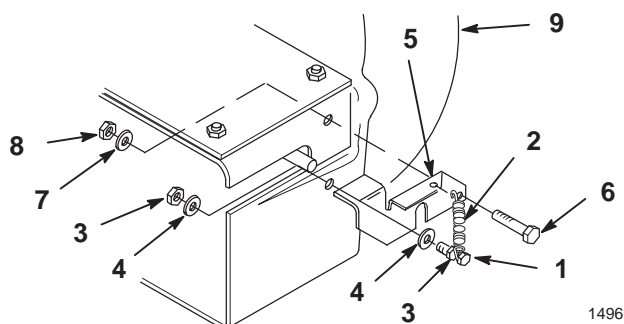


Figure 10

- | | |
|------------------------|------------------------|
| 1. Bolt, #10 x 3/4 in. | 6. Bolt, 1/4 x 3/4 in. |
| 2. Spring | 7. Washer, 1/4 in. |
| 3. Nut, #10 | 8. Locknut, 1/4 in. |
| 4. Washer, #10 | 9. Blower assembly |
| 5. Latch | |
2. Slide a washer (#10) onto the bolt and insert the bolt through the blower housing (Fig. 10), securing it with a washer (#10) and nut (#10).
 3. While holding the first nut, tighten the second so that the assembly is tight against the plastic housing.
 4. Select the appropriate latch (42 in. mower—short latch or 48 in. mower—long latch).
 5. Hook the spring into the hole in the latch and mount the latch to the blower housing with a bolt (1/4 x 3/4 in.), washer (1/4 in.), and locknut (1/4 in.) (Fig. 10). Leave the nut loose enough so that the latch pivots freely.

Assembling the Bagger Cover

1. Slide the threaded end of the indicator rod through 2 clips, the rubber seal, and the slot in the cover (Fig. 11).

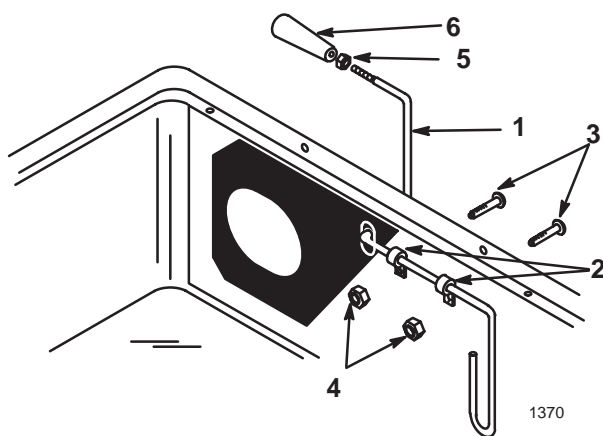


Figure 11

- | | |
|---------------------------------|---------------------|
| 1. Indicator rod | 4. Locknut, 1/4 in. |
| 2. Clips | 5. Jam nut, 1/4 in. |
| 3. Pan-head bolt, 1/4 x 5/8 in. | 6. Handle |
-
- Secure the clips to the cover with 2 pan-head bolts (1/4 x 5/8 in.) and locknuts (1/4 in.) (Fig. 11).
 - Thread the jam nut and handle completely onto the threaded end of the indicator rod (Fig. 11).
 - Rotate the handle so that the decal can be read from the operator's position, then tighten the jam nut (Fig. 11).
 - Mount the frame hinge to the cover with the bolts attached to it, securing it with 2 locknuts (1/4 in.) (Fig. 12).

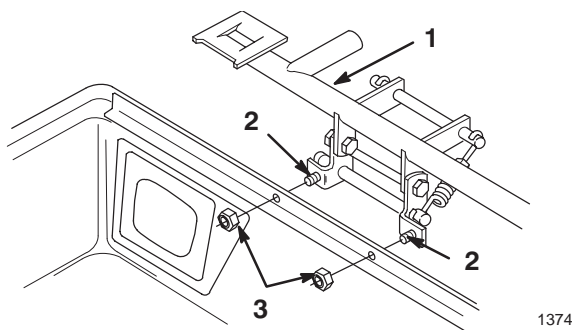


Figure 12

- | | |
|--------------------|---------------------|
| 1. Frame hinge | 3. Locknut, 1/4 in. |
| 2. Bolt (attached) | |

Assembling the Discharge Tube

- Cut 2-3/4 in. (7 cm) off the bottom of the discharge tube (Fig. 13).
- Attach the knob to the center hole in the discharge tube (Fig. 13) and secure it with a washer (1/4 in.) and bolt (#10 x 5/8 in.).

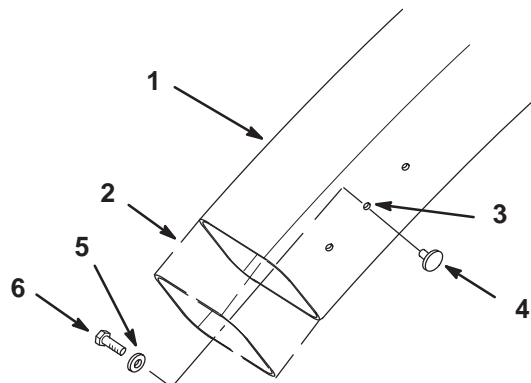


Figure 13

- | | |
|-------------------------|---------------------------|
| 1. Discharge tube | 4. Knob |
| 2. Cut 2-3/4 in. (7 cm) | 5. Washer, 7/32 in. |
| 3. Tube center hole | 6. Bolt, #10-24 x 5/8 in. |

Installing the Vac-Bagger

Mounting the Blower

- Insert the pivot pin on the blower into the pivot support bracket on the mower (Fig. 14).

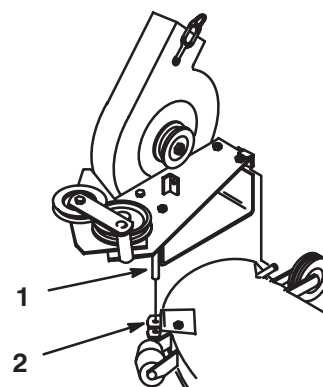


Figure 14

- | | |
|--------------|--------------------------|
| 1. Pivot pin | 2. Pivot support bracket |
|--------------|--------------------------|

2. With the blower in the open position, install the blower drive belt between the idler pulley bracket and the pulley (Fig. 15).

Note: Use belt part number 79-7480 for 42 in. mowers and belt part number 79-7490 for 48 in. mowers.

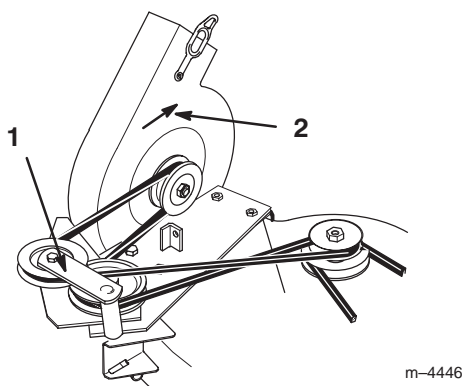


Figure 15

1. Idler pulley bracket and pulley
2. Rotation direction

3. Loop the belt around the remaining pulleys (Fig. 15).
4. Install the other end of the belt over the blower drive pulley on the spindle (Fig. 15).
5. Check the direction of blower rotation (Fig. 15).
6. With the belt installed, swing the blower toward the mower until the blower latch locks over the pin at the back of the mower (Fig. 16).

Note: If the blower cannot be latched on a 42 in. mower because of interference between mower and blower housing, cut blower housing until the blower closes and latches.

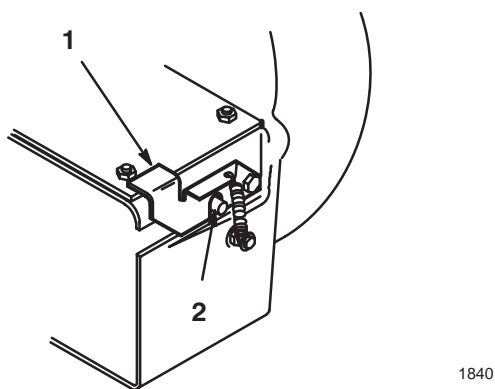


Figure 16

1. Blower latch
2. Pin

Installing Belt Covers

1. Select the belt cover bracket appropriate for your mower as illustrated in Figure 17.

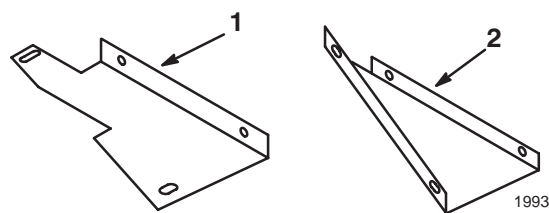


Figure 17

1. Belt cover bracket (42 in. mower)
2. Belt cover bracket (48 in. mower)

2. Install the belt cover bracket as follows:

- On 42 in. mowers, mount the belt cover bracket using 2 thread forming, flange-head bolts (1/4 x 1/2 in.) in the holes used by original cover (Fig. 18).
- On 48 in. mowers, mount the belt cover bracket to the front rib on the top of the mower using 2 flange-head bolts (1/4 x 3/8 in.) (Fig. 18).

Note: Center the bolts in the slots of the cover bracket before tightening. Do not use bolts longer than 3/8 in. because belt interference could occur.

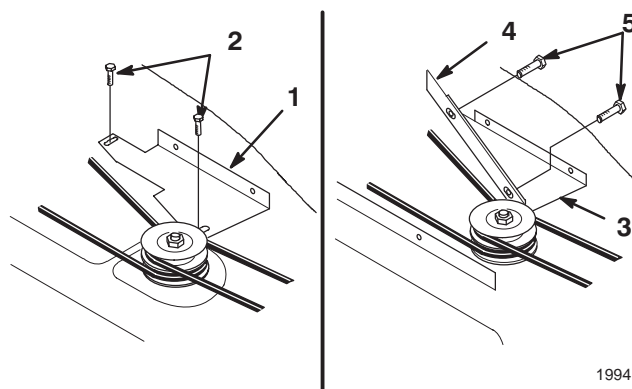


Figure 18

1. Belt cover bracket (42 in. mower)
2. Flange-head bolts, 1/4 x 1/2 in.
3. Belt cover bracket (48 in. mower)
4. Rib
5. Flange-head bolts, 1/4 x 3/8 in.

3. Mount the belt cover as follows:

- On 42 in. mowers, mount the belt cover loosely to the outside of the belt cover bracket using 3 flange-head bolts (1/4 x 1/2 in.) (Fig. 19).

Note: Do not tighten the bolts because an adjustment must be made later.

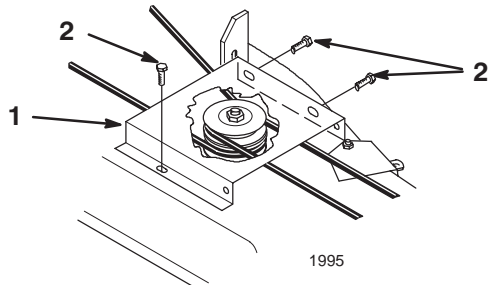


Figure 19

- | | |
|------------------------------|-------------------------------------|
| 1. Belt cover (42 in. mower) | 2. Flange-head bolts, 1/4 x 1/2 in. |
|------------------------------|-------------------------------------|

- On 48 in. mowers, mount the belt cover loosely to the outside of the belt cover bracket using 2 flange-head bolts (1/4 x 3/8 in.) and to the rear rib using a flange-head bolt (1/4 x 1/2 in.) (Fig. 20).

Note: Do not tighten the bolts because an adjustment must be made later.

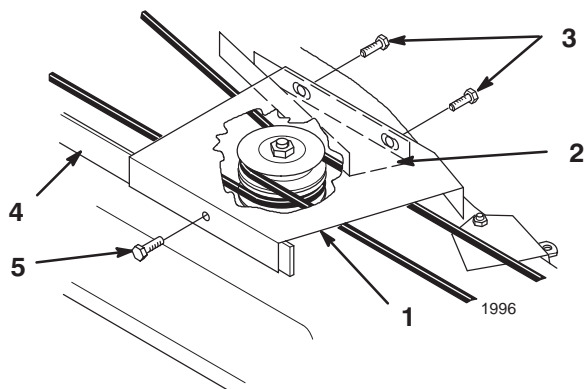


Figure 20

- | | |
|--------------------------------------|------------------------------------|
| 1. Belt cover (48 in. mower) | 4. Rib |
| 2. Belt cover bracket (48 in. mower) | 5. Flange-head bolt, 1/4 x 1/2 in. |
| 3. Flange-head bolts, 1/4 x 3/8 in. | |

Installing the Blower Belt Cover

- Mount the blower belt cover to the mower belt cover using 2 bolts (1/4 x 5/8 in.) and locknuts (Fig. 21). Tighten the lock nuts slightly so that a light drag is felt on the belt cover when tilted upward. The cover must close freely when assembled.
- Adjust the blower belt cover so that it just touches blower by sliding the mower belt cover in the slots. Make sure that the blower belt cover pivots freely and closes properly. Tighten the mower belt cover mounting bolts.

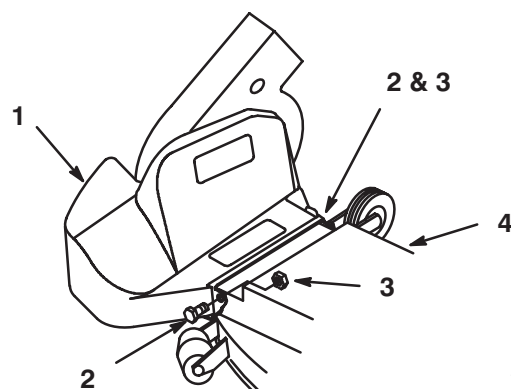


Figure 21

- | | |
|------------------------|---------------------|
| 1. Blower belt cover | 3. Locknut, 1/4 in. |
| 2. Bolt, 1/4 x 5/8 in. | 4. Mower belt cover |

Installing the Mower on the Tractor

Install the mower on the tractor. Refer to the mower *Operator's Manual*.

Attaching the Counterbalance Chain

- Remove the existing nut and clip from the bolt on the outer right support rod on the rear footrest (Fig. 22).

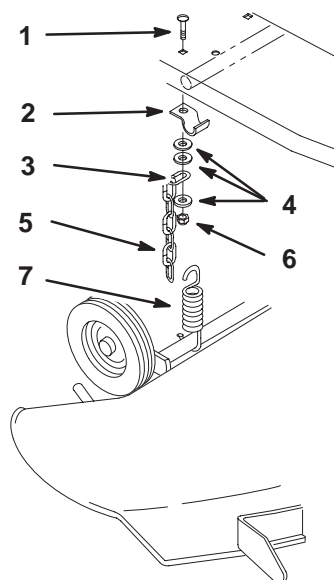


Figure 22

- | | |
|------------------------------------|-------------------------|
| 1. Carriage bolt, 5/16 x 1-1/4 in. | 4. Washer, 5/16 in. |
| 2. Retaining clip | 5. Chain |
| 3. Mounting Link | 6. Nut (reuse existing) |
| | 7. Spring |

- Replace the existing carriage bolt with a longer carriage bolt (5/16 x 1-1/4 in.) (Fig. 22).

3. Place the retaining clip and 2 washers (5/16 in.) onto the carriage bolt (Fig. 22).
4. Install a link of one end of the chain onto the carriage bolt and secure it with a third washer and the nut removed in step 1 (Fig. 22).
5. Hook the spring around the gage wheel shaft on the mower (Fig. 22).
6. Connect the chain to the spring; refer to Adjusting the Height-of-Cut, page 17, for the recommended chain link setting.

Installing the Bagger Assembly

1. Lower the quick-attach bracket into the notches in the support brackets on the tractor frame and onto the drawbar hitch (Fig. 23).

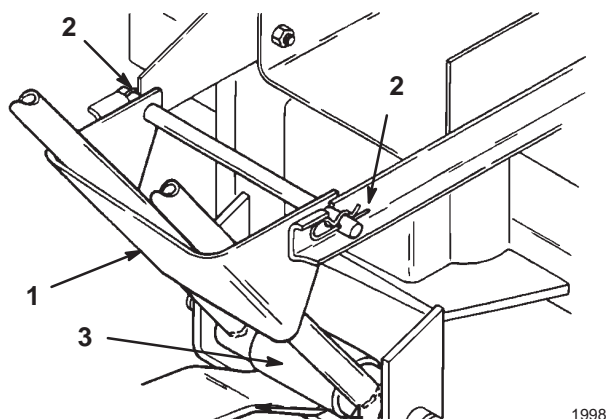


Figure 23

1. Quick-attach bracket
2. Hairpin cotter
3. Drawbar hitch

2. Secure the quick-attach bracket rod with 2 hairpin cotters (Fig. 23).
3. Tip the tractor seat forward.
4. With the lid in the open position, carefully lift the bagger top and slide it onto the quick-attach bracket (Fig. 24).

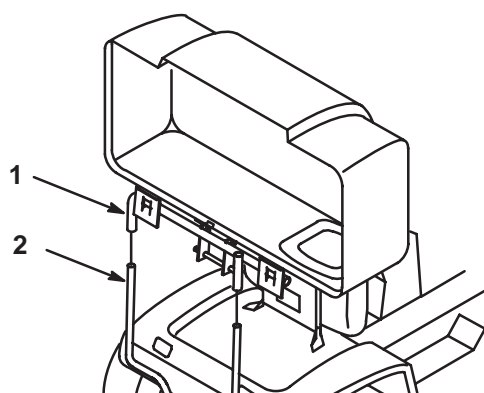


Figure 24

1. Bagger top
2. Quick-attach bracket

Caution

If you remove the bagger top when it is closed (in the down position), the top may suddenly fly open and you or someone else may be bruised, pinched, or injured in another way.

Always open the bagger top before you remove or install it on the quick-attach bracket.

5. Install the bags by attaching the bag frame hooks onto the retaining brackets (Fig. 25).

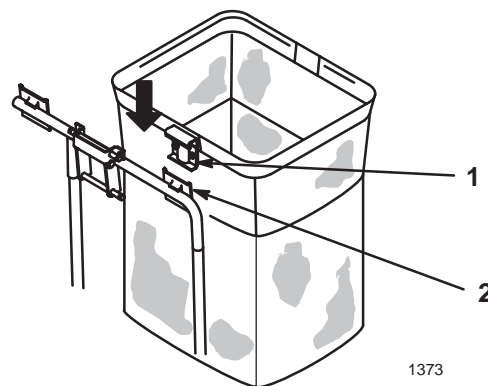
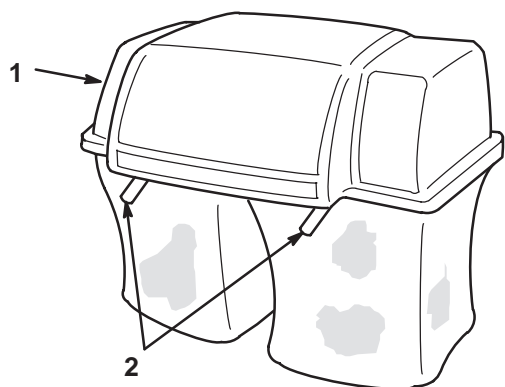


Figure 25

1. Bag frame hook
2. Retaining bracket

6. Lower the bagger top onto the bags.
7. Push down on both bag retainer handles until they lock on the bag frame (Fig. 26).



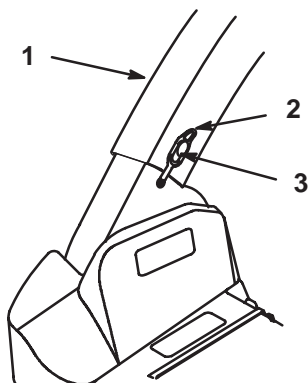
1376

Figure 26

1. Bagger top
2. Bag retainer handles

Installing the Discharge Tube

1. Move the tractor seat to its normal position.
2. Insert the upper end of the discharge tube into the bagger top.
3. Slide the lower end of the discharge tube over the blower opening (Fig. 27).
4. Hook the rubber latch over the knob (Fig. 27).



1847

Figure 27

1. Discharge tube
2. Rubber latch
3. Knob

Removing the Bagger

Important Save all parts and hardware for use when reinstalling the blower.

Park the tractor with the mower and vac bagger on a level surface and lower the attachment to the ground. Set the parking brake, stop the PTO, stop the engine, and remove the ignition key.



Danger



If you operate the mower without both grass bags installed or with the discharge tube removed, you or others may die or be severely injured by being hit by object thrown from the mower and bagger.

Always operate the mower with either the complete grass catcher mounted in place or use the mower to side discharge, making sure that the spring-loaded discharge chute is in the down position.

Removing the Discharge Tube

1. Unhook the rubber latch from the knob (Fig. 27).
2. Slide the lower end of the discharge tube off the blower discharge opening (Fig. 27).
3. Pull the upper end of the discharge tube out of the bagger top.

Removing the Bagger

1. Tip the tractor seat forward.
2. Open the bagger top and remove the grass bags from the bag frame (Fig. 26).
3. With lid in the open position carefully lift the bagger top and slide it off the quick-attach bracket (Fig. 28).



Caution



If you remove the bagger top when it is closed (in the down position), the top may suddenly fly open and you or someone else may be bruised, pinched, or injured in another way.

Always open the bagger top before you remove or install it on the quick-attach bracket.

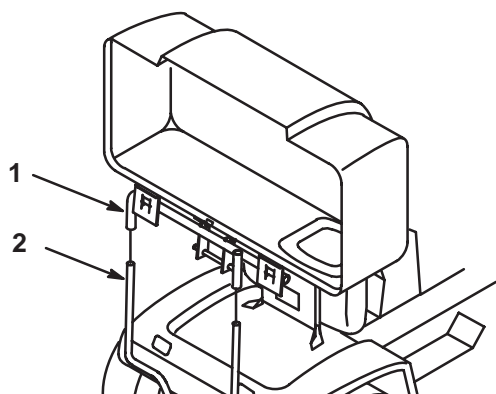


Figure 28

1. Bagger top
2. Quick-attach bracket

4. Remove 2 hairpin cotters from the holes in the rod of the quick-attach bracket (Fig. 29).

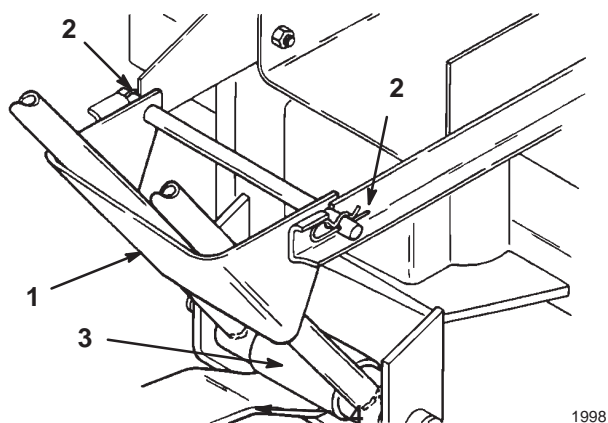


Figure 29

1. Quick-attach bracket
2. Hairpin cotter
3. Drawbar hitch

5. Remove the quick-attach bracket from the notches in the support brackets on the tractor frame and the drawbar hitch (Fig. 29).

6. Move the tractor seat to its normal position.

Removing the Blower Belt Cover

Remove the locknuts and bolts securing the cover and remove the cover (Fig. 30).

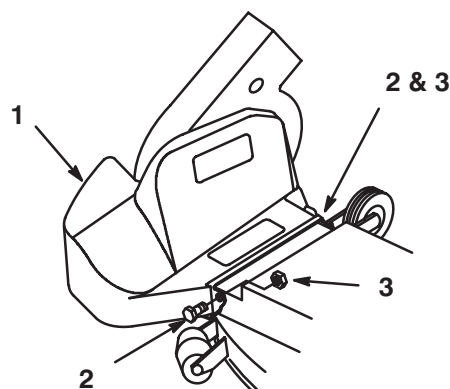


Figure 30

1. Mower belt cover
2. Bolt
3. Locknut

Removing the Mower Belt Cover

1. Remove the mower belt cover from the right side pulley (Fig. 31).
2. Unhook the blower belt from the mower pulley and remove the belt (Fig. 32).

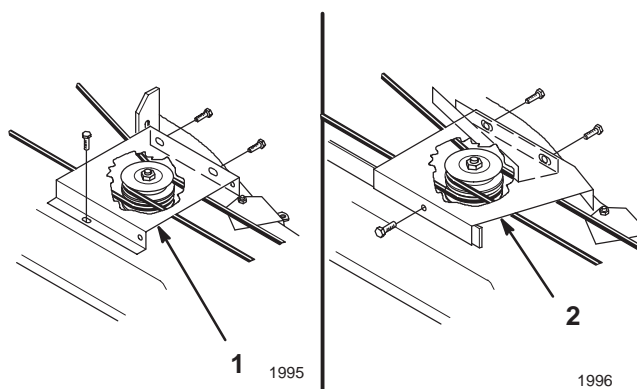


Figure 31

1. Belt cover (42 in. mower)
2. Belt cover (48 in. mower)

3. Remove belt cover bracket (Fig. 32).

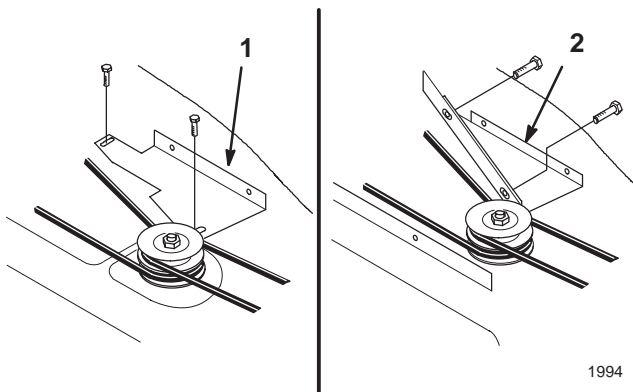


Figure 32

1. Belt cover bracket (42 in. mower)
2. Belt cover bracket (48 in. mower)

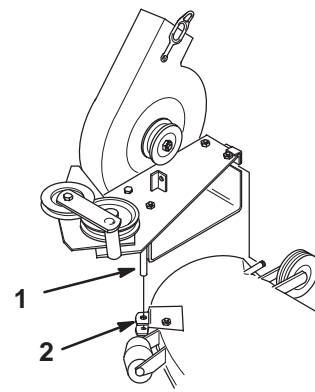


Figure 34

1. Pivot pin
2. Pivot support

Remove the Blower from the Mower

1. Open the latch and swing the blower away from the mower.
2. Remove the blower belt from the mower spindle pulley (Fig. 33).

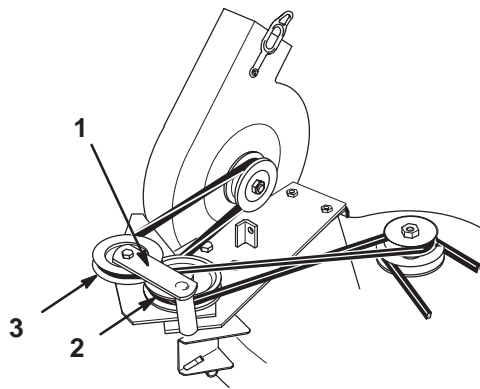


Figure 33

1. Idler pulley bracket and pulley
2. Top side of belt against bottom pulley
3. V-side of belt into top pulley

3. Remove the blower by lifting the pivot pin out of the pivot support (Fig. 34).

Removing the Blower Drive Pulley

1. Pull on the mower idler assembly to release the belt tension and remove blade drive belt from right side pulley (Fig. 35).

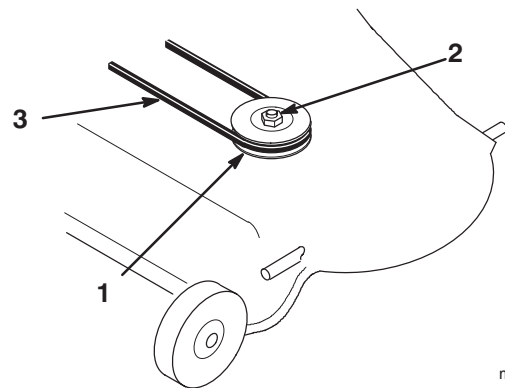


Figure 35

1. Single groove pulley
2. Lock washer and nut
3. Blade drive belt

2. Remove the nut and lock washer from right hand blade spindle (Fig. 35).

Note: Block the blade with a piece of wood to stop it from turning while you remove the pulley nut. If the blade slips hold the hex portion of spindle with a wrench.

3. Remove the double pulley.

Note: When the nut is removed the shaft is free to drop out of the spindle. Support the spindle and blade from the bottom side.

4. Slide the single pulley (removed when the bagger was installed) onto the spindle shaft.
5. Secure it with previously removed lock washer and nut (Fig. 35).

6. Tighten the nut to 50 to 75 ft.-lb. (68 to 101 N·m).
7. Install the existing mower belt by rotating it onto the pulley (Fig. 35).

Note: Ensure that the mower belt is properly located on idler and pulleys.

Removing the Blower Pivot Support

Remove the pivot support from the mower (Fig. 36).

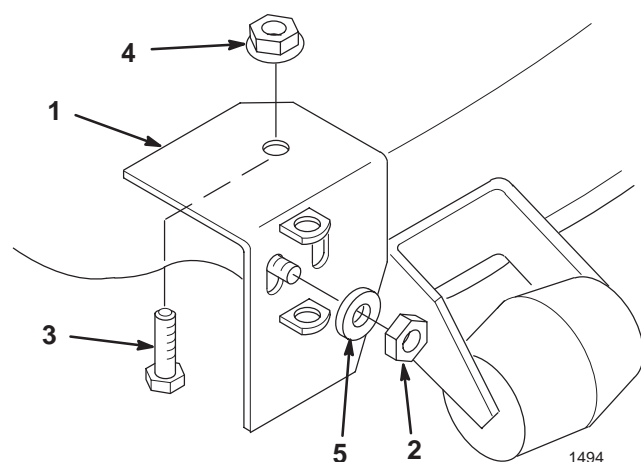


Figure 36

- | | |
|------------------|-------------------|
| 1. Pivot support | 4. Flange nut |
| 2. Nut | 5. Plastic washer |
| 3. Bolt | |

Installing the Belt Cover and Discharge Chute

1. Install the discharge chute onto the mower with saved hardware (Fig. 37).

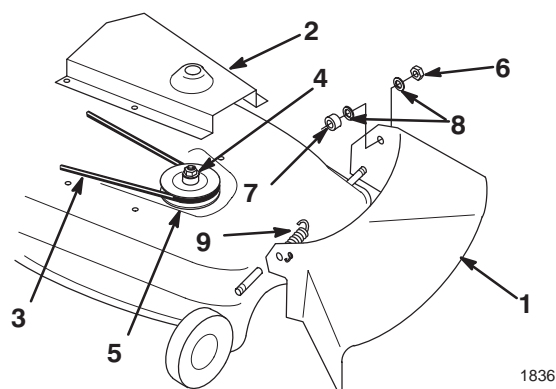


Figure 37

- | | |
|------------------------|---------------------|
| 1. Discharge chute | 6. Jam nut, 3/8 in. |
| 2. Belt cover | 7. Rubber bushing |
| 3. Blade drive belt | 8. Plastic washers |
| 4. Nut and lock washer | 9. Torsion spring |
| 5. Single pulley | |

2. Install the belt cover onto the mower (Fig. 37).

Operation



Caution



To Avoid Personal Injury:

- Become familiar with all operating and safety instructions in the operator's manual for your tractor and mower before using this attachment.
- Never remove the discharge tube, bags, bagger top, or blower while the engine is running.
- Always stop the engine before clearing an obstruction from the vac bagging system.
- Never do maintenance or repairs while the engine is running.

Using the Full Bag Tester

As you cut grass, the left bag fills first. If you overfill the bags, grass will eventually plug the discharge tube.

1. Stop the tractor and set the parking brake.
2. To check if both bags are full, periodically raise the full bag tester handle (Fig. 38).

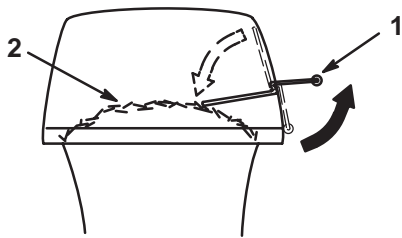


Figure 38

1. Full bag tester handle
2. Bag full

3. If you feel resistance as you raise the handle (Fig. 38), empty the bags.

Emptying the Grass Bags

Grass bags can weigh up to 90 lb (41kg) when full. Be careful when lifting or handling a grass bag that is full.

1. Stop the tractor, set the parking brake, disengage the power take off (PTO), stop the engine, and remove the key.
2. Tip the tractor seat forward.
3. Pull up on both bag retainer handles until they unlock from the bag frame (Fig. 26).
4. Open the bagger top.
5. Compress debris into the bags.
6. With both hands, lift up on the bag and unhook it from the retaining bracket (Fig. 25).
7. Empty the bag.
8. Repeat steps 6 and 7 for the other bag.
9. Install the bags by sliding the bag frame hooks onto the retaining brackets (Fig. 25).
10. Lower the bagger top onto the bags.
11. Push down on both bag retainer handles until they lock on the bag frame (Fig. 26).
12. Move the tractor seat to its normal position.

Adjusting the Height-of-Cut

When you change the mower height-of-cut, you must also change the the spring location in the chain links.

1. Select spring attachment link according to the following chart for the height-of-cut used.

Height-of-Cut	Recommended Link Position
1–2 in. (25–51 mm)	5
2–3 in. (51–76 mm)	4
3–4 in. (76–101 mm)	3–4

2. Hook the spring into the recommended link (Fig. 39).

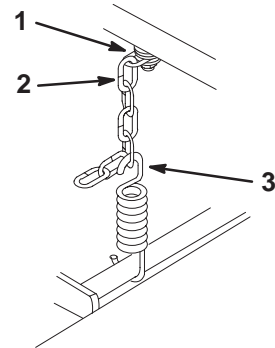


Figure 39

1. Mounting Link
2. Link 1
3. Spring Hook

Clearing Obstructions from the Bagger



Danger



If you try to clear an obstruction without disengaging the power take off (PTO) and turning off the tractor, you could be exposed to flying debris and moving mower blades, killing or seriously injuring you or bystanders.

Before clearing an obstruction, disengage the power take off (PTO), stop the engine, and remove the ignition key.

1. Stop the tractor, set the parking brake, disengage the PTO, stop the engine, and remove the ignition key.
2. Check the grass bags and empty them if they are full.
3. Remove and separate the discharge tube and blower from the bagger top and mower.
4. Using a stick or similar object, carefully remove and clear the obstruction from the mower, discharge tube, blower, and the bagger top.

5. After you remove the obstruction, install the complete bagger system and resume operation.

Bagging Tips

Size

The tractor is longer and wider with this attachment installed. By turning too sharply in confined places you may damage the attachment.

Trimming

Trim with the left side of the mower. Do not trim with the right side of the mower because you could damage the blower and discharge tube.

Cutting Height

Do not set the mower cutting height too low because long grass surrounding the mower can prevent air from getting under the mower and entering the bagging system. If enough air does not get under the mower, the bagging system will plug.

Cutting Frequency

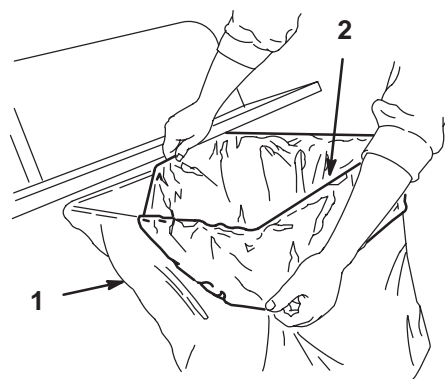
Cut the grass often, especially when it grows rapidly. You will have to cut your grass twice if it gets excessively long (refer to Bagging Long Grass, page 18).

Cutting Technique

For best lawn appearance, slightly overlap the mower into the previously cut area. This helps reduce the load on the engine and reduces the chance of plugging the blower and discharge tube.

Using Bags

Although not required, bags may be inserted into the cloth grass bags as liners to collect clippings and make disposal more convenient (Fig. 40). If you use a bag liner, remove the filled grass bag and close the top of the liner. Then pull the liner out the grass bag or turn the bag upside down while holding the handle on the bottom of the grass bag (allows liner to slide out).



1378

Figure 40

1. Cloth grass bag

2. Bag (liner)

Bagging Speed

Most often you will bag with the tractor throttle in the Fast position and drive at a normal ground speed. In dry and dusty grass, you may want to slightly reduce throttle speed and increase ground speed of the tractor. The bagging system may plug if you drive too fast and the engine speed gets too slow. On hills, it may be necessary to slow the ground speed. This helps maintain engine speed and bagging efficiency. Mow down hill whenever possible.



Caution



As the grass bags fill, extra weight is added to the back of the tractor. If you stop and start suddenly on hills, you may lose steering control or the tractor may tip.

- **Do not start or stop suddenly when going uphill or downhill. Avoid uphill starts.**
- **If you do stop the tractor when going uphill, disengage the PTO, then back down the hill using slow reverse speed.**
- **Do not change speeds or stop on slopes.**

Bagging Long Grass

Excessively long grass is heavy and may not be propelled completely into the grass bags. If this happens, the discharge tube and blower may plug. To avoid plugging the bagging system, mow the grass at a high height-of-cut, then lower the mower to your normal cutting height and repeat the bagging process.

Bagging Wet Grass

Always try to cut grass when it is dry because your lawn will have a neat appearance. If you must cut wet grass, use the conventional side discharge feature of the mower. Several hours later, when the clippings are dry, install the complete bagger attachment and vacuum up the grass clippings.

Signs of Plugging

As you are bagging, a small amount of grass clippings normally blow out the front of the mower. An excessive amount of clipping blow-out indicates that the bags are full or the system is plugged.

Maintenance

Recommended Maintenance Schedule

Maintenance Service Interval	Maintenance Procedure
After each use	Clean the bagger
After the first 10 operating hours, and monthly thereafter	Inspect the bagger
Storage Service	<ul style="list-style-type: none">• Clean the bagger• Inspect the bagger• Paint chipped surfaces



Caution



If you leave the key in the ignition switch, someone could accidentally start the engine and seriously injure you or other bystanders.

Remove the key from the ignition and disconnect the wire from the spark plug before you do any maintenance. Set the wire aside so that it does not accidentally contact the spark plug.

Cleaning the Bagger

1. After each use, remove and wash the inside and outside of the bagger top, discharge tube, discharge elbow, blower, and the underside of the mower, using water sprayed from a garden hose. Use a mild automotive detergent to remove stubborn dirt.

Ensure that you remove matted grass from all parts.

2. After washing, let all parts dry thoroughly.

Important Do not wash the grass bags.

Inspecting the Bagger

Inspect the blower and bagger for damage after the first ten hours of operation and monthly thereafter.

1. Check the discharge tube, elbow, and the bagger top. Replace these parts if they are cracked or broken.

2. Tighten all nuts and bolts.
3. Inspect the grass bags for deterioration.



Warning



The grass bag material may tear, wear, and eventually deteriorate, allowing debris to fly out of the bag which could severely injure you or bystanders.

- Do not use the bagger if either or both bags are worn, torn, deteriorated, or otherwise damaged,
- Frequently check the grass bags for holes, rips, wear, and other deterioration.
- Do not wash the grass bags.
- If a bag has deteriorated, install new grass bags.

Caring for the Grass Bags

Do not wash the grass bags. To prevent rapid deterioration of the bag material, store the bags so they dry completely after each use.



Caution



If you store grass clippings in the grass bags, under the right conditions, spontaneous combustion (a fire-generating process that occurs without an external source of ignition) could occur, possibly causing injury to people and/or property damage.

Never store grass clippings and debris in the grass bags.

Storage

1. Clean the bagger.
2. Inspect the bagger for damage.
3. Ensure that the grass bags are empty and thoroughly dry.
4. Store the bagger in a clean, dry place, out of direct sunlight. If you must store it outside, cover it with a weatherproof cover.