



522xi Special Edition Wheel Horse® Garden Tractor

Model No. 73561SEI – 20000001 and Up



Parts Catalog

Only standard Toro
replacement parts are
available for order.

Ordering Replacement Parts

To order replacement parts, please supply: the part number, the quantity, and the description of each part desired.

Understanding Reference Numbers

Each identified part in an illustration has a reference number. The reference number for a part also appears in the parts list, along with other information about the part.

This catalog uses two special reference number formats, one to indicate parts in a service assembly and another to indicate the quantity of a given part in an illustration.

Service Assembly Reference Numbers

Parts in service assemblies have reference numbers in the form **a:b**. The **a** represents the reference number of the entire service assembly and the **b** represents a sequential number unique to each part within the service assembly.

For example, a wheel assembly might be identified by reference number **6**, the tire by **6:1**, the valve by **6:2**, and the wheel by **6:3**. When you order the assembly identified by reference number **6**, you receive all parts identified by reference numbers **6:1**, **6:2**, and **6:3**. However, you may also order any part individually.

Reference numbers of this type appear in illustrations and in part lists.

Reference Numbers Indicating Quantity

In an illustration, if a reference number indicates more than one part, the reference number has the form **nX y**. The **n** represents the quantity of the part, the **X** is the multiplication symbol, and the **y** represents the reference number.

For example, in an illustration, the reference number **2X 37** means that two of the parts identified by reference number **37** are indicated.

Contents

Description	Page	Description	Page
Bumper and Hood Support Assembly	4	Front Smart Turn Assembly	25
Steering Tower and Fuel Tank Support Asm ...	5	Lower Parking Brake Assembly	26
Attach-A-Matic and Hitch Assembly	6	Cruise Control Assembly	27
Lower Power Steering Assembly	7	Fender and Fuel System Assembly	28
Power Steering and Tilt Assembly	8	Wheel Assembly	29
Tie Rods, Spindle and Front Axle Assembly ...	9	Air Cooled Engine Assembly	30
Hydro Trans Axle Assembly	10	Electrical Assembly	31
Hydro Trans Axle Assembly (Continued)	11	Wiring Harness Routing	32
Transmission Assembly	12	Electrical Schematic Diagram	33
Transmission Assembly	13	Crankshaft-Kohler #CH22S-PS-66545	34
Drive Shaft Assembly	14	Crankcase-Kohler #CH22S-PS-66545	35
Lower Hydro Lift Assembly	15	Oil Pan/Lubrication-Kohler #CH22S-PS-66545	36
Upper Hydro Lift Assembly	16	Head/Valve/Breather #CH22S-PS-66545	37
Hood and Headlight Assembly	17	Ignition/Electrical-Kohler #CH22S-PS-66545 .	38
Grill and Side Panel Assembly	18	Blower Housing and Baffles #CH22S-PS-66545	39
Dash Assembly	19	Starting System-Kohler #CH22S-PS-66545 ..	40
Fender, Footrest and Seat Assembly	20	Fuel System-Kohler #CH22S-PS-66545	41
Rear Smart Turn Assembly	21	Engine Controls-Kohler #CH22S-PS-66545 ..	42
Hi-Lo Shift Assembly	22	Air Intake-Kohler #CH22S-PS-66545	43
Upper Parking Brake Assembly	23	Exhaust-Kohler #CH22S-PS-66545	44
Hydro Controls Assembly	24		

Accessories

Description	Model / Part No.	Description	Model / Part No.
36" Tiller*	79375	Twin Bagger/Blower (For 44" Deck)	79305
Rear Attach-A-Matic	98-8703	Twin Bagger/Blower (For 48" Deck)	79310
50" Grader Blade*	79356	Recycler Kit (For 44" Deck)	86041
Clevis Hitch	94-7800	Recycler Kit (For 48" Deck)	79195
42" Single Stage Snowthrower**	79365	Recycler Kit (For 52" Deck)	79185
44" Two-Stage Snowthrower**	79366	Rear Wheel Weights (Plastic)	81115
48" Snow/Dozer Blade**	79355	Flush Mount Rear Wheel Weights	
42" Rear Discharge Mower	78353	(Cast Iron)	81117
44" Side Discharge Mower	78357	Front Wheel Weights (Cast Iron)	81214
48" Side Discharge Mower	78363	Tire Chains	82146
52" Side Discharge Mower	78370		
60" Side Discharge Mower	78395		

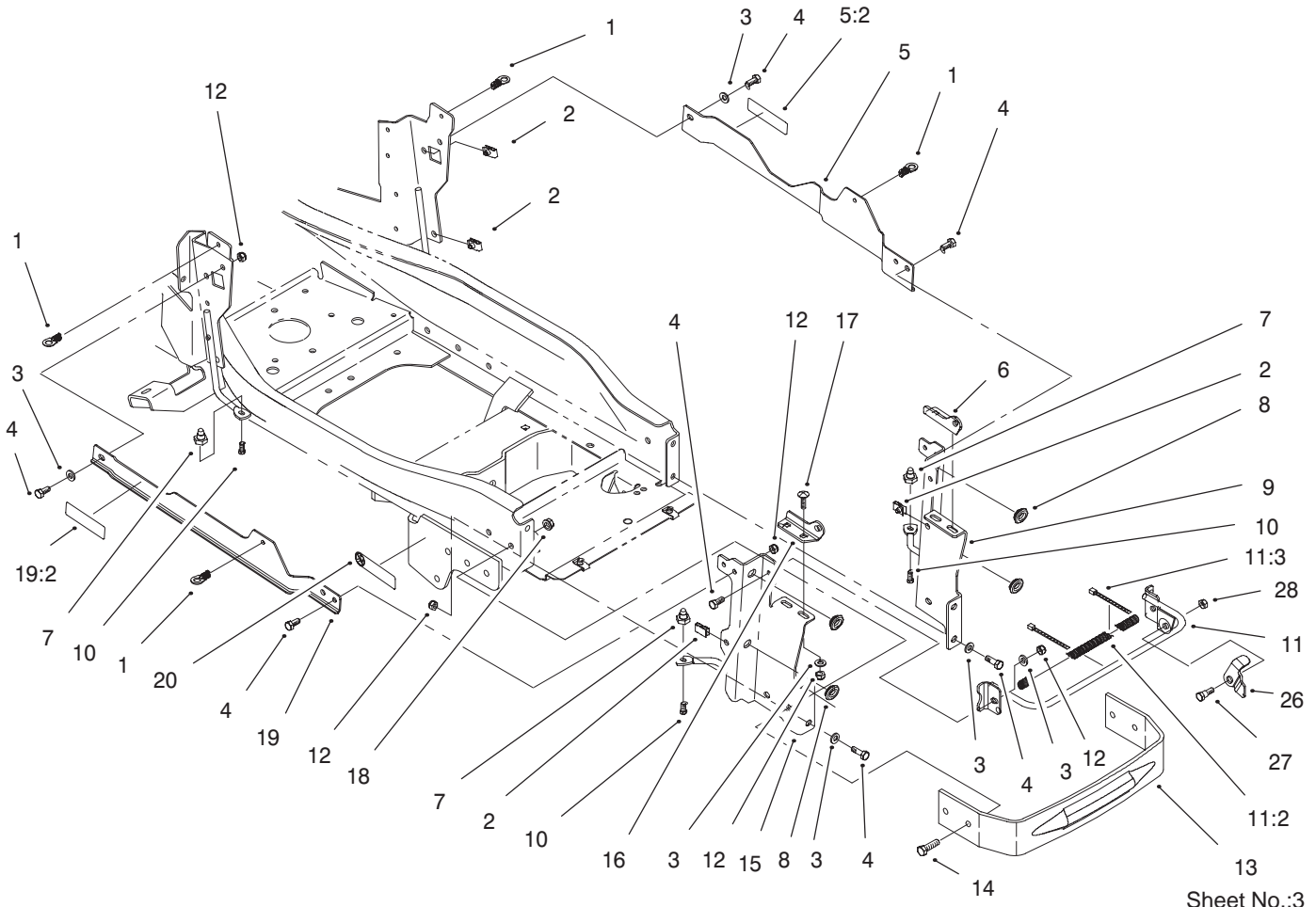
Note: * Requires 98-8703
 ** Requires 81115

Part Description Abbreviations

Part descriptions in this catalog may include the following abbreviations.

Abbreviation	Meaning	Abbreviation	Meaning
AR	as required	INC	incorporated
ASM	assembly	LH	left hand
CARR	carriage	NI	nylon insert
DEG	degrees	PPH	Phillips pan head
FH	flat head	PTH	Phillips truss head
GA	gauge	PTO	power take off
HF	hex flange	RH	right hand
HH	hex head	SFH	slotted fillister head
HHF	hex head flange	SHH	slotted hex head
HLH	hex lag head	SQH	square head
HJ	hex jam	SHWH	slotted hex washer head
HOC	height-of-cut	SPH	slotted pan head
HS	hex socket	SRH	slotted round head
HSBH	hex socket button head	STD	standard
HSFH	hex socket flat head	TAP	self tapping
HSH	hex socket head	TTH	Torx truss head
HWH	hex washer head	WH	wing head
HWHTF	hex washer head thread forming		

PROTOTYPE

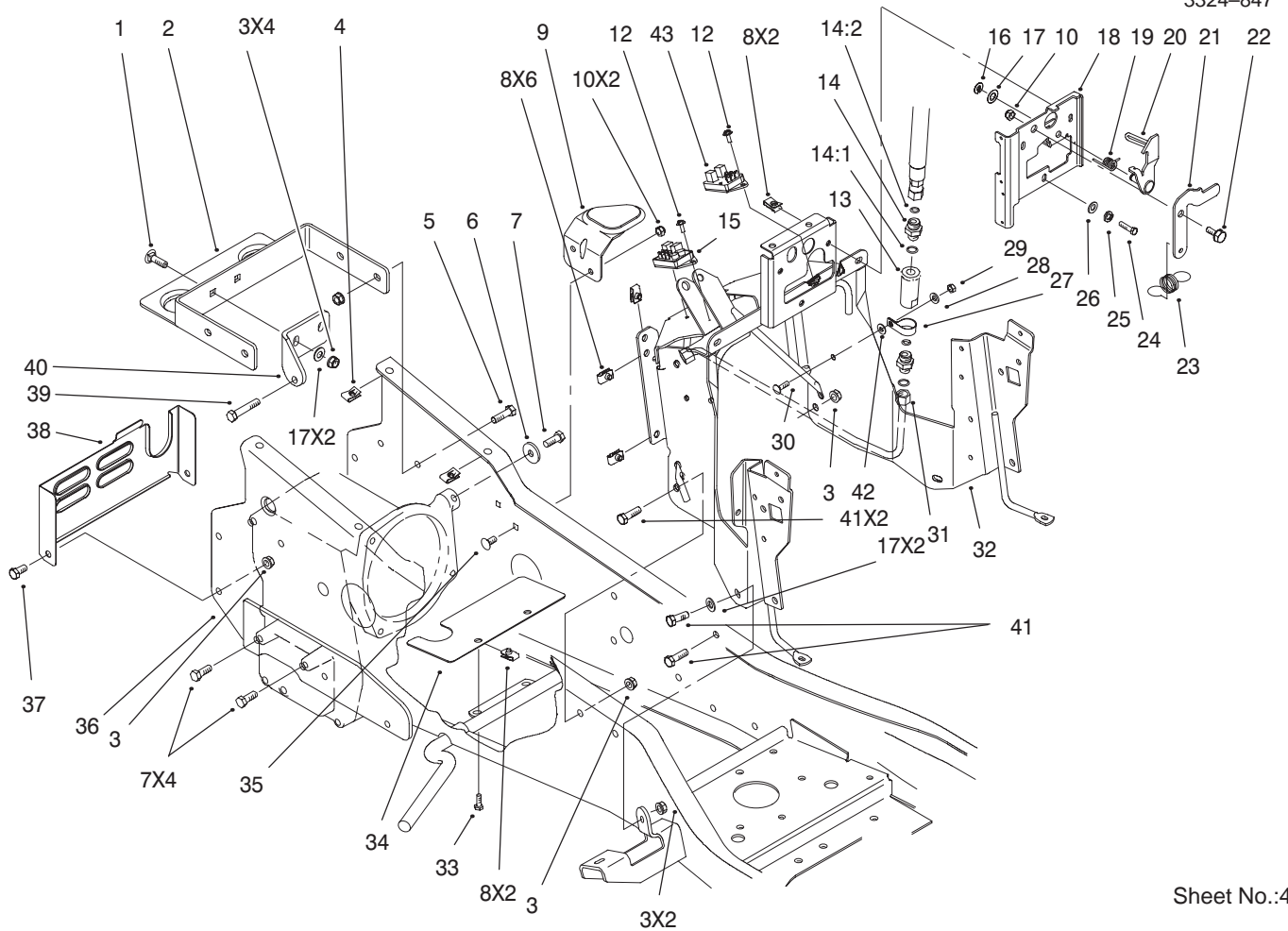


Bumper and Hood Support Assembly

Ref. No.	Part No.	Qty.	Description
1	95-4013	4	Latch Asm
2	107069	6	Clip
3	3256-23	12	Washer-Flat
4	322-3	12	Screw-HH
5	98-5064	1	Support Asm
5:2	98-5014	1	Decal - Warning
6	98-9026-03	1	Bracket-Hinge Lower LH
7	95-3989	4	Mount-Sidepanel
8	94-7910	4	Grommet
9	95-4082-03	1	Support-Hood LH
10	46-8093	4	Screw-Plastite
11	99-5305	1	Hood Support ASM
11:2	95-4258	1	Cover - Brace
11:3	614249	2	Tie Strap
12	3296-29	16	Nut-Lock, NI
13	94-2308-03	1	Bumper - Frame
14	323-7	4	Screw-HH
15	95-4081-03	1	Support-Hood RH
16	98-9027-03	1	Bracket-Hinge Lower RH
17	3230-16	4	Screw-HH
18	3296-39	4	Nut-Lock, NI
19	99-5345	1	Support Asm
19:2	98-5014	1	Decal - Warning
20	92-8747	2	Decal

Ref. No.	Part No.	Qty.	Description
26	98-9015	1	Lever - Hood Prop
27	37-8771	1	Bolt-Shoulder
28	3296-47	1	Nut-Lock, NI

PROTOTYPE

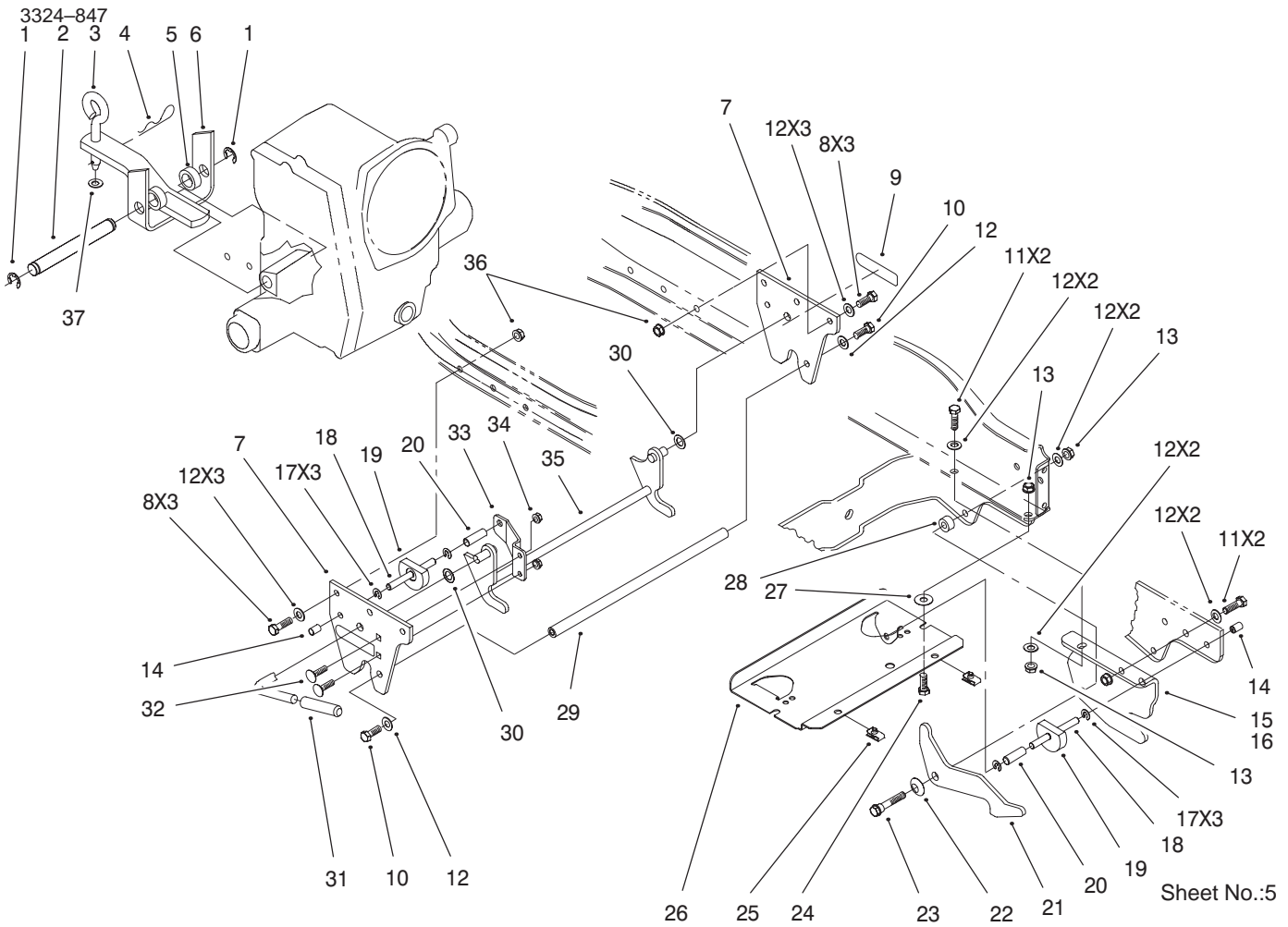


Sheet No.:4

Steering Tower and Fuel Tank Support Assembly

Ref. No.	Part No.	Qty.	Description
1	3231-25	2	Screw-CARR
2	94-7740-03	1	Support-Gas Tank
3	3296-39	10	Nut-Lock, NI
4	94-2413	4	U-Nut
5	323-7	4	Screw-HH
6	2844	1	Washer
7	3235-22	5	Screw-HH
8	107069	10	Clip
9	95-3961-03	1	Support - Fuel Tank
10	3296-29	3	Nut-Lock, NI
12	12-5450	2	Screw
13	95-3991	1	Filter -Hydraulic Screen
14	95-4138	2	Fitting - Hydr. Straight
14:1	237-22	1	O-Ring
14:2	237-42	1	O-Ring
15	99-3703	1	Module-Cruise
16	105797	1	Ring-Retaining
17	3256-24	5	Washer-Flat
18	95-3892-03	1	Bracket - Latch
19	95-4165	1	Spring - Latch Lever
20	95-3899	1	Lever-Latch
21	95-3900	1	Latch - Tension Lever
22	37-8771	1	Bolt-Shoulder
23	95-3895	1	Spring - Latch Lever
24	321-4	3	Screw-HH

Ref. No.	Part No.	Qty.	Description
25	3253-3	3	Washer-Lock/Sp
26	3256-22	3	Washer-Flat
27	2412-106	1	Clamp-R
28	3256-22	1	Washer-Flat
29	3296-42	1	Nut-Lock
30	3229-1	1	Screw-CARR
31	94-7971	1	Tube - Hydraulic
32	99-4441-03	1	Tower ASM
33	321-4	2	Screw-HH
34	95-4246	1	Baffle - Fan
35	3230-20	2	Screw-CARR
36	99-5306-03	1	Frame
37	323-4	2	Screw-HH
38	95-4005-03	1	Cover - Rear
39	94-7972	1	Screw - HH
40	94-7739-03	1	Strap-Torque
41	323-6	4	Screw-HH
42	32115-15	1	Pushnut-Bolt Retainer
43	99-3701	1	Module-Clutch

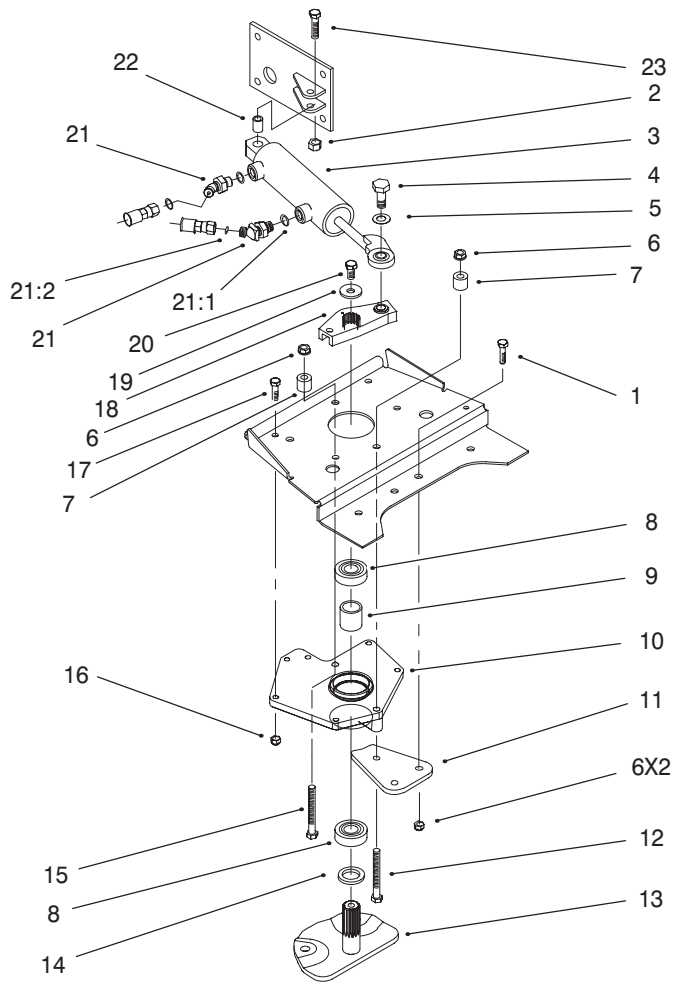


Attach-A-Matic and Hitch Assembly

Ref. No.	Part No.	Qty.	Description
1	5618	2	E-Ring
2	105269	1	Pin-Stationary Hitch
3	106634	1	Pin-Tool
4	9335054	1	Pin-Hair
5	9791204	2	Spacer
6	98-8083-03	1	Hitch
7	94-2251-03	2	Plate - Hitch
8	323-44	6	Screw-HH
9	98-1632	2	Decal - Attach-A-Matic
10	3235-22	2	Screw-HH
11	323-7	4	Screw-HH
12	3256-24	16	Washer-Flat
13	3296-39	8	Nut-Lock, NI
14	105316	3	Cap-Plunger Rod
*15	94-2230-03	1	Hanger - RH
16	94-2231-03	1	Hanger - LH
17	105797	6	Ring-Retaining
18	94-2256	3	Rod - Lock
19	94-2258	3	Lock - Latch
20	8616	3	Spring
21	94-7777	2	Latch-Pulley Box
22	3290-221	2	Washer-Spring
23	92-7674	2	Bolt
24	323-6	2	Screw-HH
25	107069	2	Clip

Ref. No.	Part No.	Qty.	Description
26	94-2304-03	1	Tray - Battery
27	3-4685	2	Washer-Top Thrust
28	94-2233	2	Spacer
29	94-2475	1	Rod - Spacer
30	98-1629	2	Washer
31	9038	1	Grip
32	3230-2	2	Screw-CARR
33	94-7855-03	1	Bracket-Mid Arm
34	3296-29	2	Nut-Lock, NI
35	94-2250-03	1	Latch
36	108881	6	Nut-Differential
37	3256-26	1	Washer-Flat

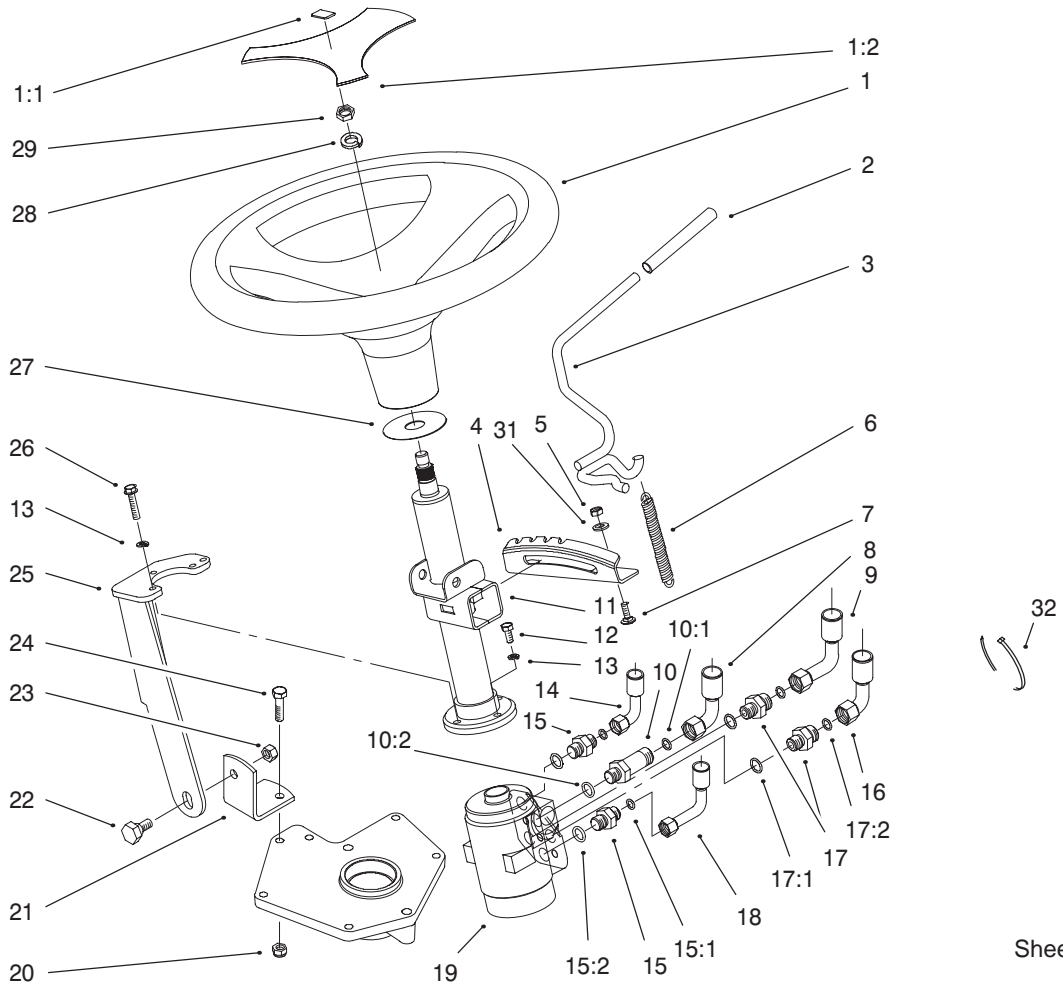
* Not illustrated



Sheet No.:8

Lower Power Steering Assembly

Ref. No.	Part No.	Qty.	Description	Ref. No.	Part No.	Qty.	Description
1	323-7	2	Screw-HH	21	95-4136	2	Fitting-Hydraulic 45°
2	108881	1	Nut-Differential	21:1	237-42	1	O-Ring
3	99-1909	1	Cylinder-Power Steering	21:2	237-21	1	O-Ring
4	94-7976	1	Screw-HH	22	99-2320	1	Spacer-Cylinder
5	98-3087	1	Washer - Power Steering	23	323-9	1	Screw-HH
6	3296-39	4	Nut-Lock, NI				
7	94-7819	2	Spacer - Stop				
8	251-82	2	Bearing-Ball				
9	94-2219	1	Spacer - Power Steering				
10	94-7581	1	Housing-Power Steering				
11	94-7820-03	1	Plate-Power Steering				
12	323-15	1	Screw-HH				
13	94-2142-03	1	Shaft-Sector				
14	3256-42	1	Washer-Flat				
15	323-10	1	Screw-HH				
16	3296-29	4	Nut-Lock, NI				
17	322-6	4	Screw-HH				
18	94-7556	1	Arm-Power Steering Upper				
19	2844	1	Washer				
20	98-3052	1	Screw - Thread Locking				

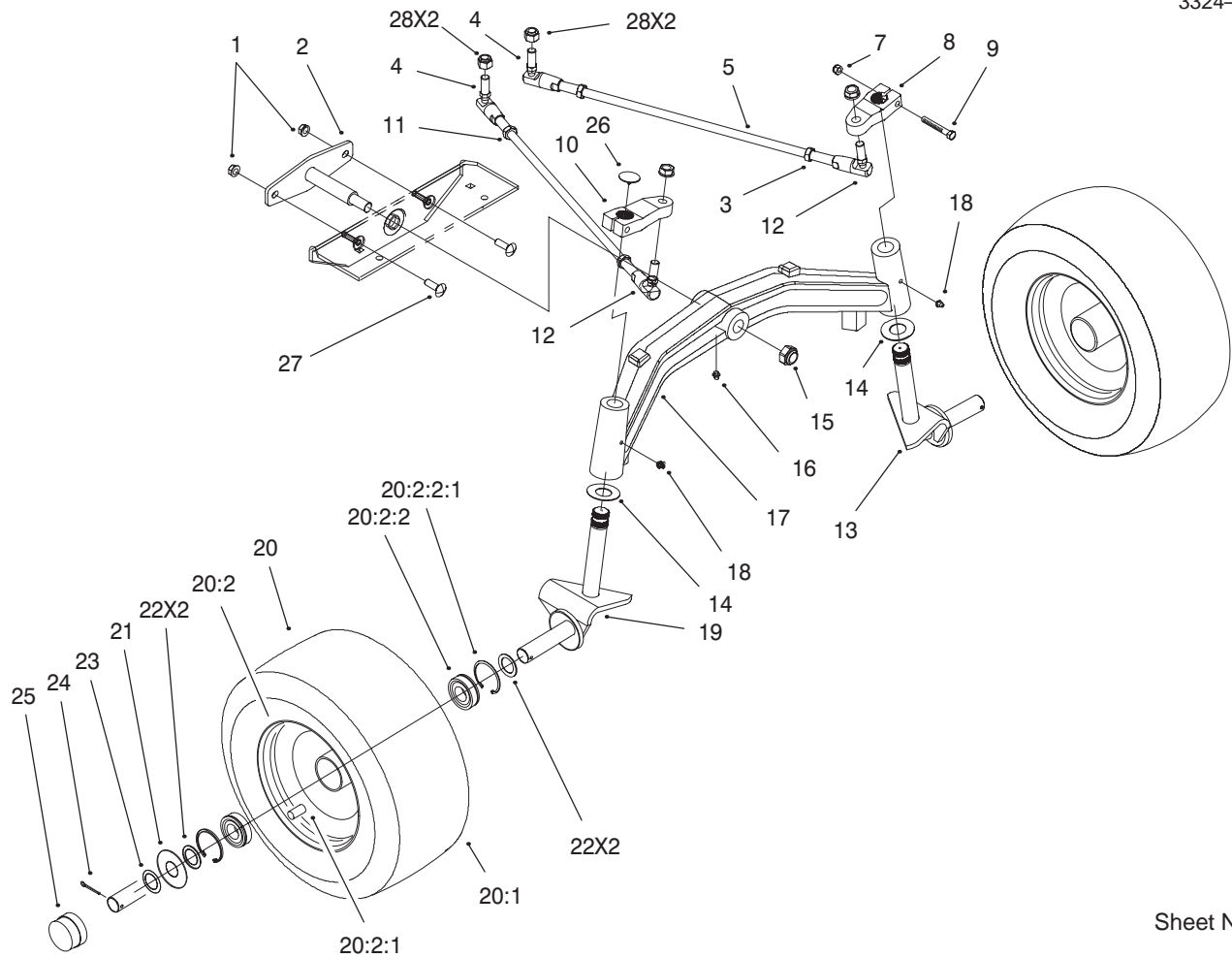


Sheet No.:9

Power Steering and Tilt Assembly

Ref. No.	Part No.	Qty.	Description
1	98-1474	1	Wheel-Steering
1	98-7211	1	Cover Asm
1:1	98-1459	1	Decal-Toro
1:2	98-1468	1	Cover - Wheel, Steering
2	92-6798	1	Cap - Rod Tilt
3	95-3964	1	Lever-Tilt
4	94-2382	1	Bracket - Detent
5	3296-42	2	Nut-Lock
6	95-3805	1	Spring
7	3229-1	2	Screw-CARR
8	94-7947	1	Hose Asm
9	94-7949	1	Hose Asm
10	95-4137	1	Fitting - Hydraulic Long
10:1	237-42	1	O-Ring
10:2	237-22	1	O-Ring
11	94-2451	1	Column-Power
12	33103-020	1	Screw-HHF
13	48-8020	4	Washer-Spring
14	94-7948	1	Hose Asm
15	95-4139	2	Fitting - Hyd. Straight
15:1	237-42	1	O-Ring
15:2	237-21	1	O-Ring
16	95-3807	1	Hose Asm
17	95-4138	2	Fitting - Hyd. Straight

Ref. No.	Part No.	Qty.	Description
17:1	237-22	1	O-Ring
17:2	237-42	1	O-Ring
18	94-7946	1	Hose Asm
19	94-7567	1	Control Unit - Power Steering
20	3296-29	2	Nut-Lock, NI
21	94-7599-03	1	Bracket-Pivot, Power Steering
22	94-7582	1	Bolt - Shoulder
23	108881	1	Nut-Differential
24	322-6	2	Screw-HH
25	94-7521-03	1	Pivot-Power String
26	33103-025	3	Screw-HHF
27	94-2025	1	Washer - Boot
28	69-8420	1	Washer-Lock
29	95-4182	1	Nut - HH Jam
31	3256-22	2	Washer-Flat
32	614249	2	Tie Strap



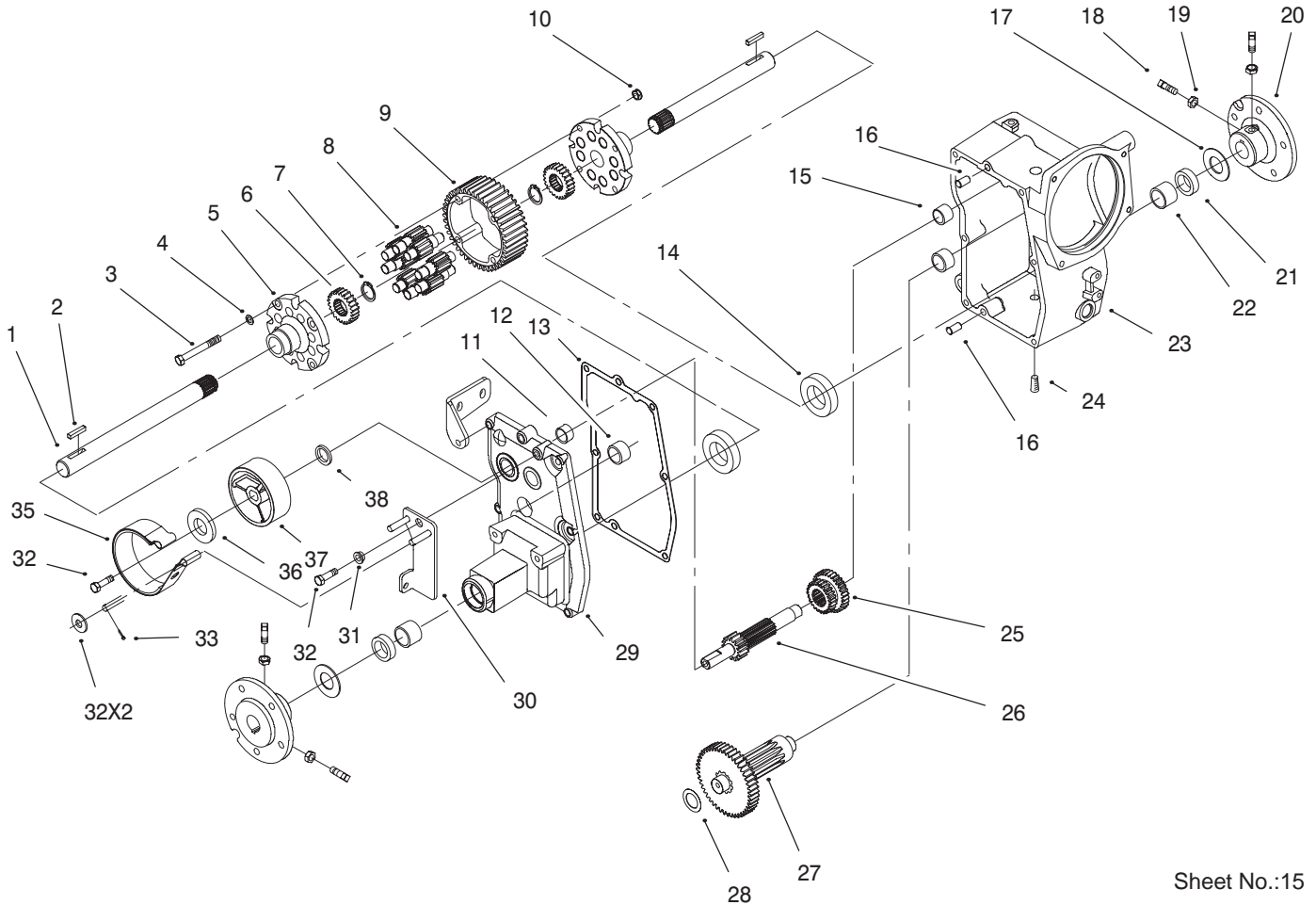
Sheet No.:14

Tie Rods, Spindle and Front Axle Assembly

Ref. No.	Part No.	Qty.	Description
1	3296-39	2	Nut-Lock, NI
2	94-2205-03	1	Pin-Pivot
3	3220-5	2	Nut-Hex Jam
4	94-7539	2	Balljoint - LH Thread
5	100-1121	2	Rod-Tie
7	3296-29	2	Nut-Lock, NI
8	94-2197	1	Arm - Steering LH
9	322-32	2	Screw-HH
10	94-2196	1	Arm - Steering RH
11	3220-12	2	Nut-Jam, LH Thread
12	98-8086	2	Balljoint - RH Thread
13	94-7537-03	1	Spindle-LH
14	9548	2	Washer-Thrust
15	3296-61	1	Nut-Lock
16	302-5	1	Fitting - Lube
17	94-7568-03	1	Axle-Front
18	302-5	2	Fitting - Lube
19	94-7536-03	1	Spindle-RH
20	99-3695	2	Wheel & Tire ASM
20:1	99-3696	1	Tire
20:2	94-7541	1	Rim ASM
20:2:1	5108	1	Valve-Tubeless Tire
20:2:2	94-7538	2	Bearing
20:2:2:1	94-2053	1	Ring-Snap
*	112819	1	Tube-Inner
21	95-4060	2	Washer - Wheel

Ref. No.	Part No.	Qty.	Description
22	9202514	4	Washer
23	9202524	2	Washer
24	3272-18	2	Pin-Cotter
25	94-7871	2	Cap - Dust
26	98-1642	2	Cap - Spindle
27	3231-25	2	Screw-CARR
28	98-8089	4	Nut-Esna

* Not illustrated

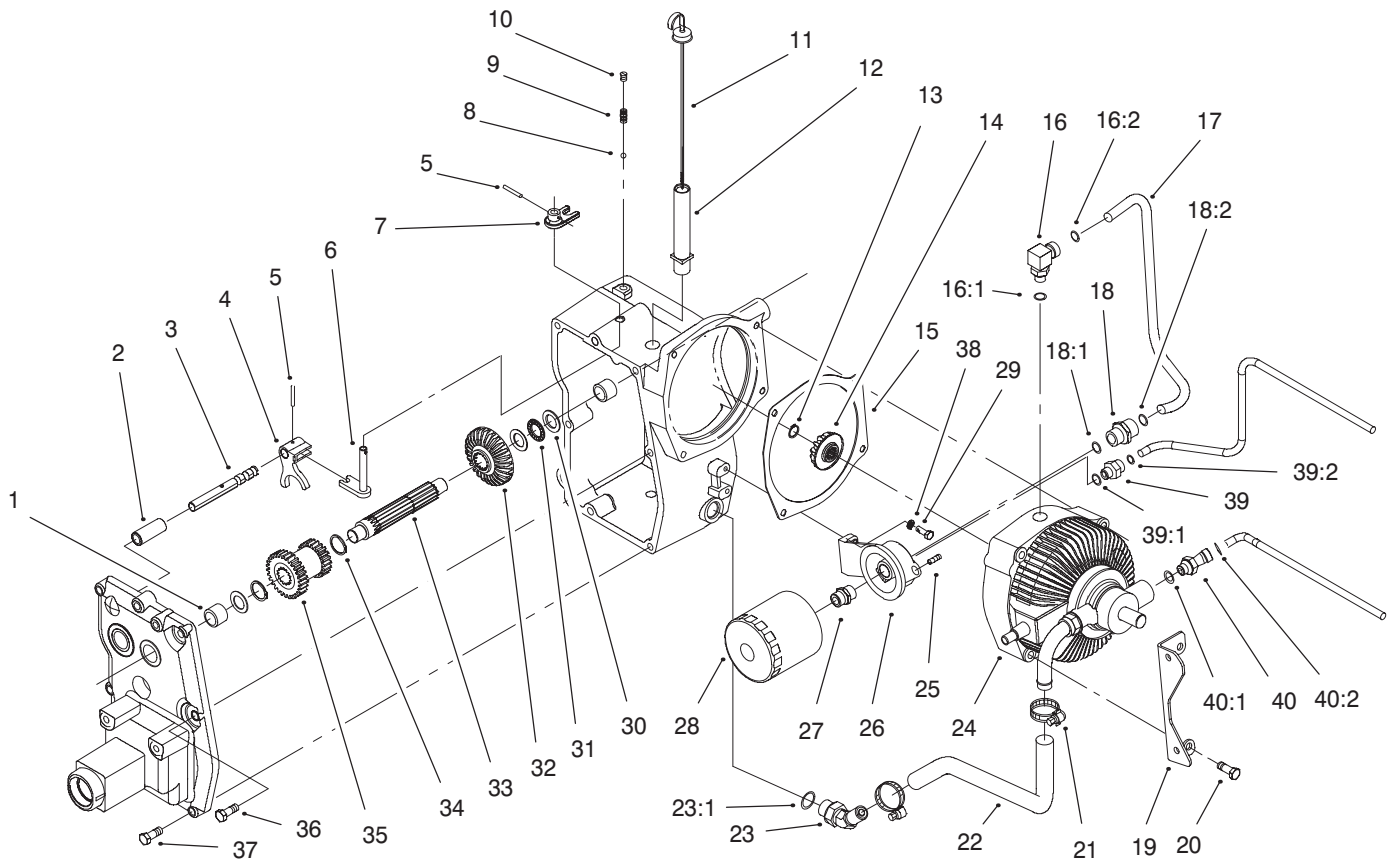


Sheet No.:15

Hydro Trans Axle Assembly

Ref. No.	Part No.	Qty.	Description
1	79-3340	2	Axle-Rear
2	79-3370	2	Key
3	911423	4	Bolt-Hex
4	107374	4	Washer
5	111196	2	End Cap-Differential
6	101889	2	Gear-Axle Differential
7	105876	2	Ring-Snap
8	101623	8	Gear-Pinion 11t
9	105061	1	Gear-Differential Ring 43t
10	108881	4	Nut-Differential
11	1540	1	Bearing-Needle
12	94-2021	2	Bearing - Needle
13	99-5334	1	Gasket-Case
14	111199	2	Bearing-Ball
15	1529	1	Bearing-Needle
16	108363	2	Pin-Locating
17	106826	2	Washer-Thrust
18	3243-5	4	Screw-Set
19	3218-3	4	Nut-Jam
20	105763-03	2	Hub-Wheel
21	6449	2	Seal-Oil
22	9416	2	Bearing
23	94-2001-03	1	Case-LH, Trans
24	99-8551	1	Plug-Pipe
25	94-2008	1	Gear - Sliding

Ref. No.	Part No.	Qty.	Description
26	94-2007	1	Shaft - Brake
27	94-2006	1	Gear Asm
28	9547	1	Washer-Thrust
29	94-2002-03	1	Case-RH, Trans
30	94-2019-03	1	Arm-Brake Pivot
31	100309	1	Cam-Spacer
32	3235-22	2	Screw-HH
33	3272-6	2	Pin-Cotter
34	3256-24	2	Washer-Flat
35	94-2419	1	Band - Brake
36	2844	1	Washer
37	94-2009	1	Drum - Brake
38	253-44	1	Seal-Oil



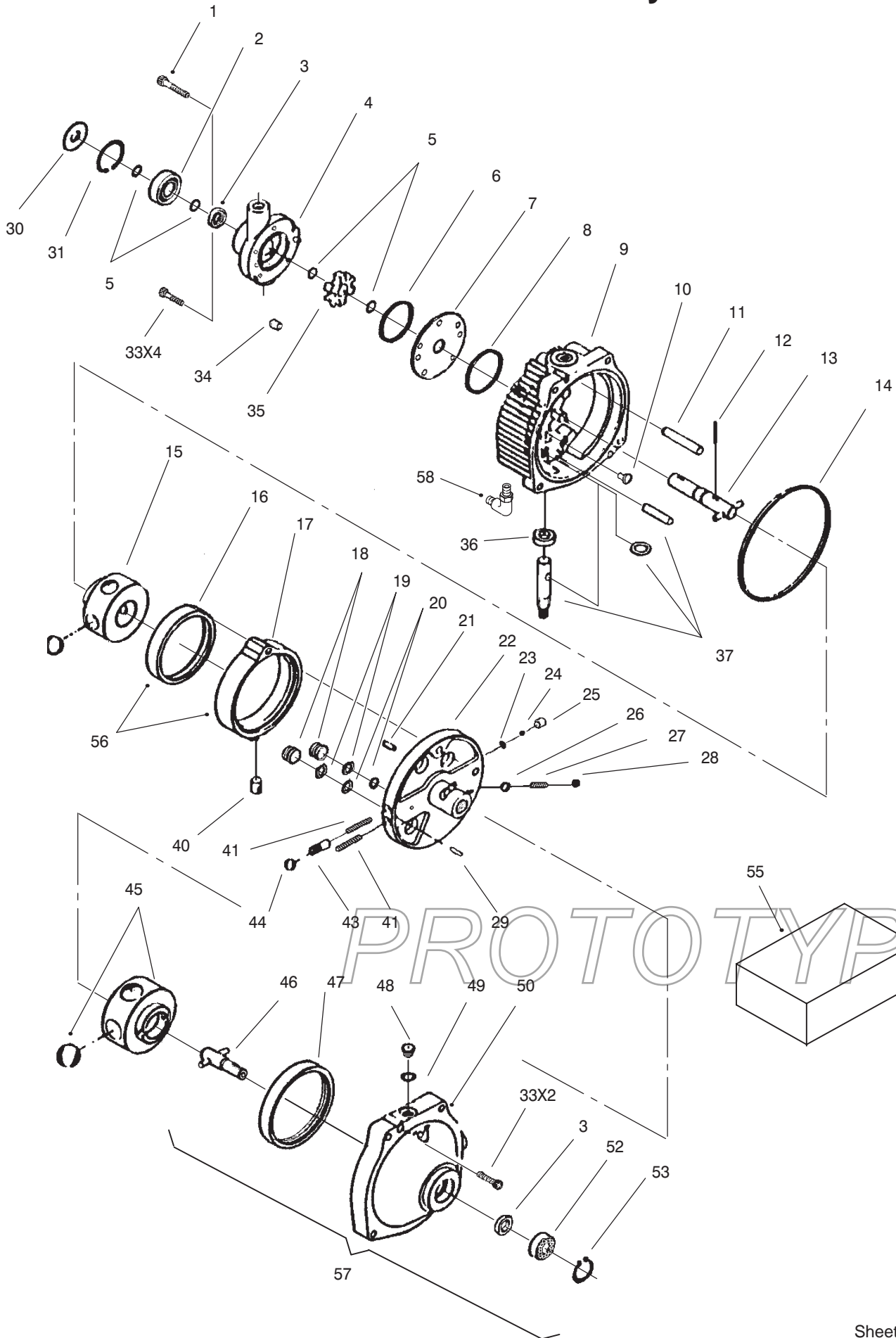
Sheet No.:16

Hydro Trans Axle Assembly (Continued)

Ref. No.	Part No.	Qty.	Description
1	1529	2	Bearing-Needle
2	94-2014	1	Tube - Shifter Rail
3	94-2054	1	Rail - Shift
4	94-2015	1	Fork - Hi/Lo Shift
5	933154	2	Pin-Roll
6	94-2143	1	Arm-Shifter
7	94-7510	1	Shift - Hi/Lo
8	3517	1	Ball-Detent
9	94-2024	1	Spring - Shift Detent
10	3247-2	1	Screw-Hex Socket Set
11	94-7680-03	1	Dipstick
12	94-7559	1	Tube - Dipstick
13	32120-64	1	Ring-External Snap
14	94-7565	1	Pinion - Bevel
15	702062	1	Gasket - Trans
16	94-7693	1	Fitting-90°
16:1	237-42	1	O-Ring
16:2	237-30	1	O-Ring
17	94-7969	1	Tube - Hydraulic
18	94-7694	1	Fitting-Straight
18:1	237-42	1	O-Ring
18:2	237-30	1	O-Ring
19	94-2148-03	1	Plate-Support Bracket
20	323-13	4	Screw-HH
21	2412-141	2	Clamp-Drive, Worm

Ref. No.	Part No.	Qty.	Description
22	95-4133	1	Hose - Suction
23	94-7692	1	Fitting - Hose
23:1	237-80	1	O-Ring
24	94-2003	1	Transmission - Hydro
25	99-8551	1	Plug-Pipe
26	108323	1	Base-Filter
27	5991	1	Fitting
28	79-5270	1	Oil Filter Asm
29	321-5	2	Screw-HH
30	1535	3	Washer-Thrust
31	8571	1	Bearing-Thrust
32	94-7566	1	Gear - Bevel
33	94-2010	1	Shaft - Input
34	32151-29	2	Ring-Snap, External
35	94-2011	1	Gear - Hi/Lo
36	323-9	3	Screw-HH
37	323-8	2	Screw-HH
38	3253-3	2	Washer-Lock/Sp
39	95-4138	1	Fitting - Hyd. Straight
39:1	237-22	1	O-Ring
39:2	237-42	1	O-Ring
40	95-4135	1	Fitting - Hydraulic 45°
40:1	237-42	1	O-Ring
40:2	237-22	1	O-Ring

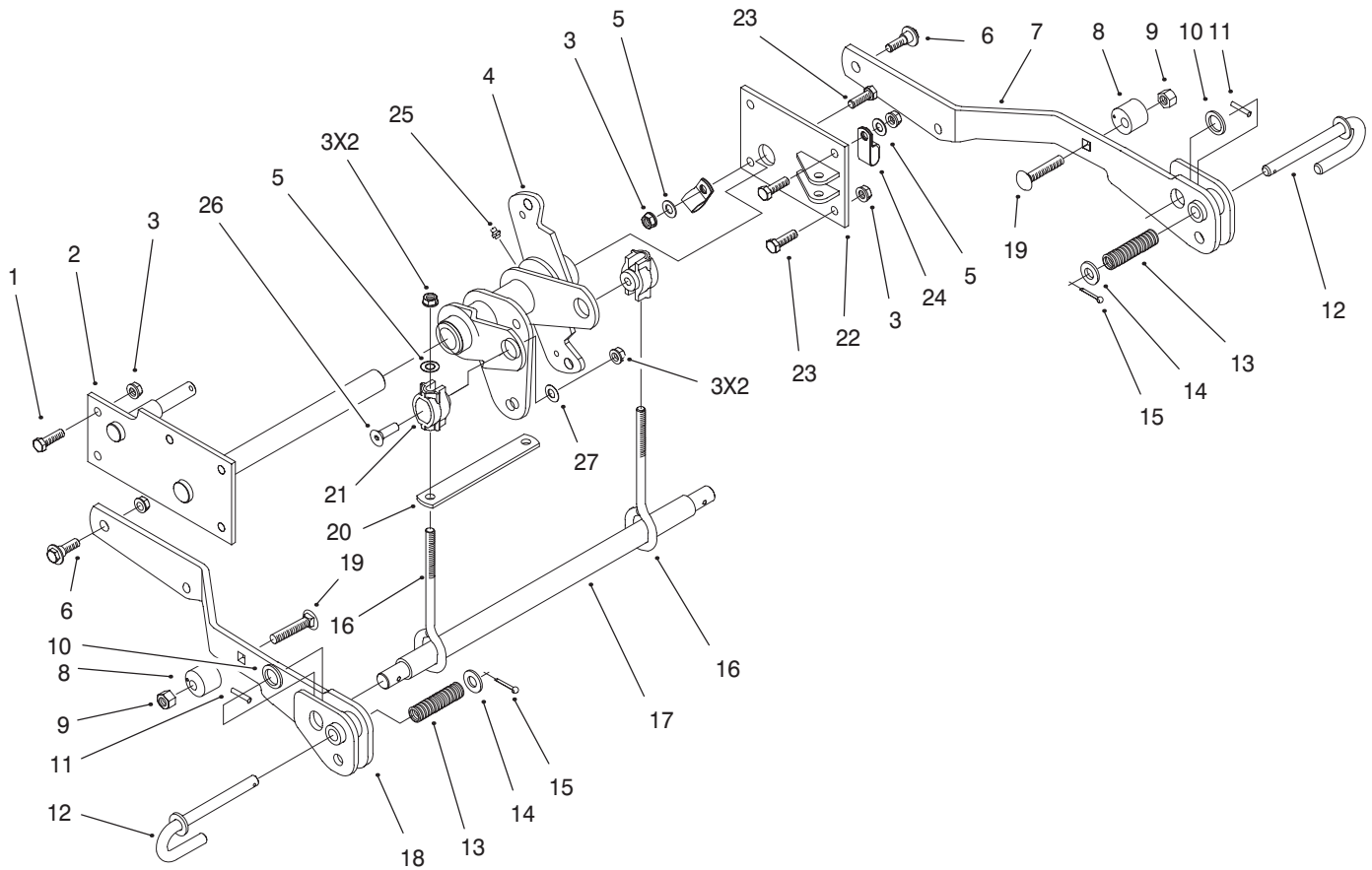
Transmission Assembly



Transmission Assembly

Ref. No.	Part No.	Qty.	Description	Ref. No.	Part No.	Qty.	Description
1	56-2800	1	Capscrew				
2	56-2810	1	Bearing				
3	56-2820	2	Oil Seal				
4	98-7377	1	Charge Pump Service Assembly				
5	56-3090	4	Ring				
6	56-2850	1	Seal				
7	56-2860	1	Plate				
8	56-2870	1	Seal				
9	112641	1	Cover Sub Asm				
10	56-2880	2	Button				
11	56-2890	1	Pin				
12	56-2900	1	Pin				
13	56-2910	1	Shaft				
14	56-2920	1	Seal				
15	56-2930	1	Rotor				
16	113136	1	Pump-Race				
17	93-9810	1	Ring - Cam				
18	56-2950	2	Piston				
19	56-2960	2	Ring				
20	56-2970	2	O-Ring				
21	56-2980	1	Pin				
22	56-2990	1	Pintle				
23	56-3000	2	Ring				
24	56-3010	2	Ball				
25	56-3020	2	Body				
26	56-3030	1	Ball				
27	56-3040	1	Spring				
28	56-3050	1	Plug				
29	56-3060	1	Pin				
30	112652	1	Shield-Grass				
31	112653	1	Retaining-Ring				
33	56-3100	6	Capscrew				
34	56-3110	6	Roll				
35	56-3120	1	Carrier				
36	56-3130	1	Oil Seal				
37	56-3140	1	Shaft Kit				
40	56-3170	1	Insert				
41	56-3180	1	Spring				
43	56-3200	2	Body				
44	56-3210	2	Ball				
45	56-3220	1	Rotor				
46	56-3230	1	Shaft				
47	56-3240	1	Race				
48	56-3250	1	Plug Asm				
49	56-3260	1	O-Ring				
50	98-7379	1	Body				
52	56-3280	1	Bearing				
53	56-3290	1	Ring				
55	56-3310	1	Seal Kit				
56	56-2940	1	Cam Ring				
57	98-7380	1	Body ASM				
58	98-7378	1	Fitting - 90° Bent Tube				

PROTOTYPE



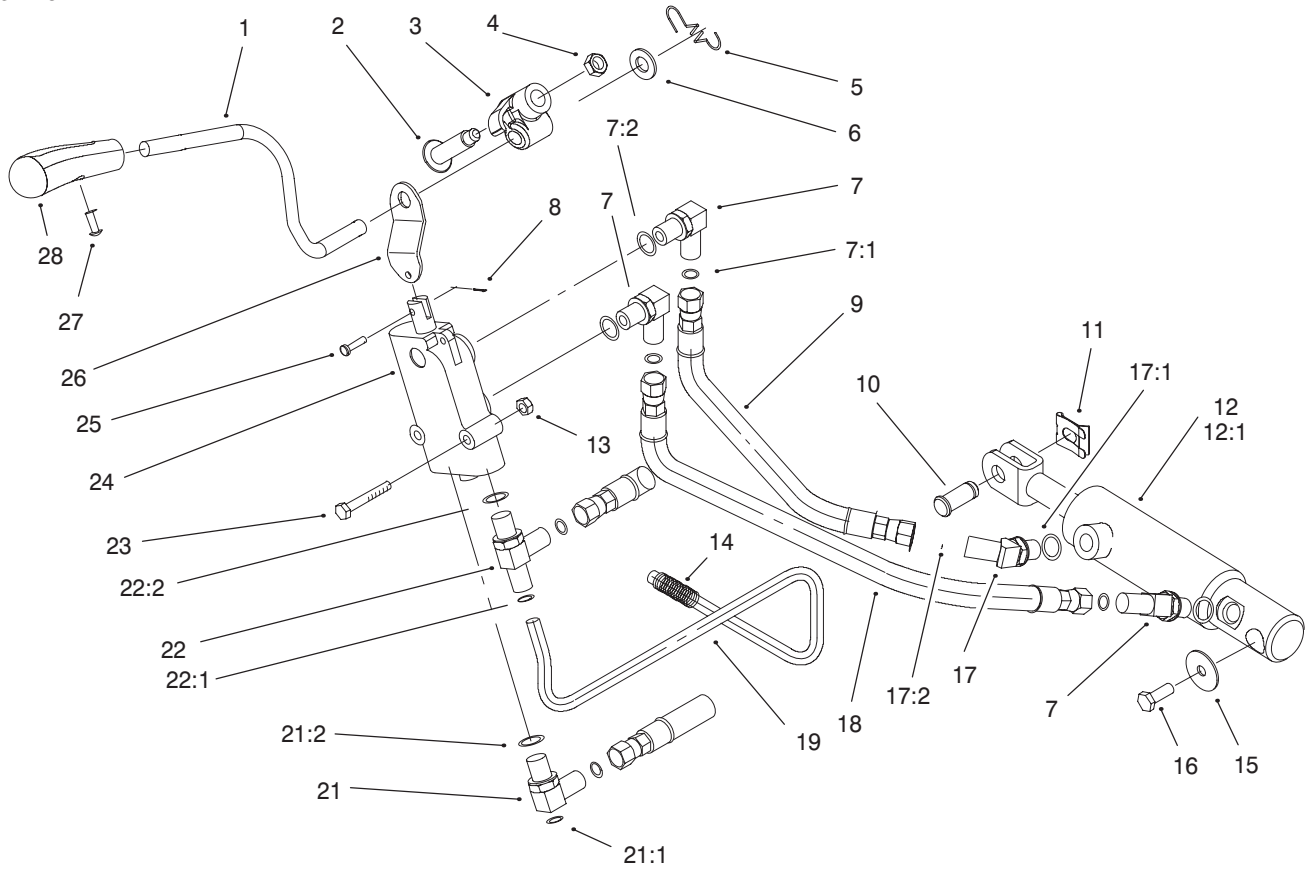
Sheet No.:18

Lower Hydro Lift Assembly

Ref. No.	Part No.	Qty.	Description
1	323-7	5	Screw-HH
2	94-2263-03	1	Support-Deck Lift
3	3296-39	13	Nut-Lock, NI
4	99-4430	1	Bellcrank And Bushing ASM
5	3256-24	2	Washer-Flat
6	614672	2	Bolt-Shoulder
7	94-2279-03	1	Arm-Lift LH
8	94-2411	2	Stop - Lift Adj
9	3296-48	2	Nut-Lock NI
10	3256-28	2	Washer-Flat
11	32121-79	2	Pin-Roll
12	94-2301	2	Pin - J
13	95-4256	2	Spring - Compression
14	3256-26	2	Washer-Flat
15	3272-10	2	Pin-Cotter
16	94-2262	2	Rod - Lift
17	94-2277-03	1	Bar - Lift
18	94-2278-03	1	Arm-Lift RH
19	3232-5	2	Screw-CARR
20	94-7600-03	1	Spacer-Strap
21	99-2344	2	Sleeve-Lift
22	99-3746-03	1	Support-Cylinder
23	323-18	4	Screw-HH
24	98-1617	1	Clamp-Tube
25	302-5	1	Fitting - Lube

Ref. No.	Part No.	Qty.	Description
26	99-8051	2	Screw
27	99-6496	2	Washer-Flat

PROTOTYPE



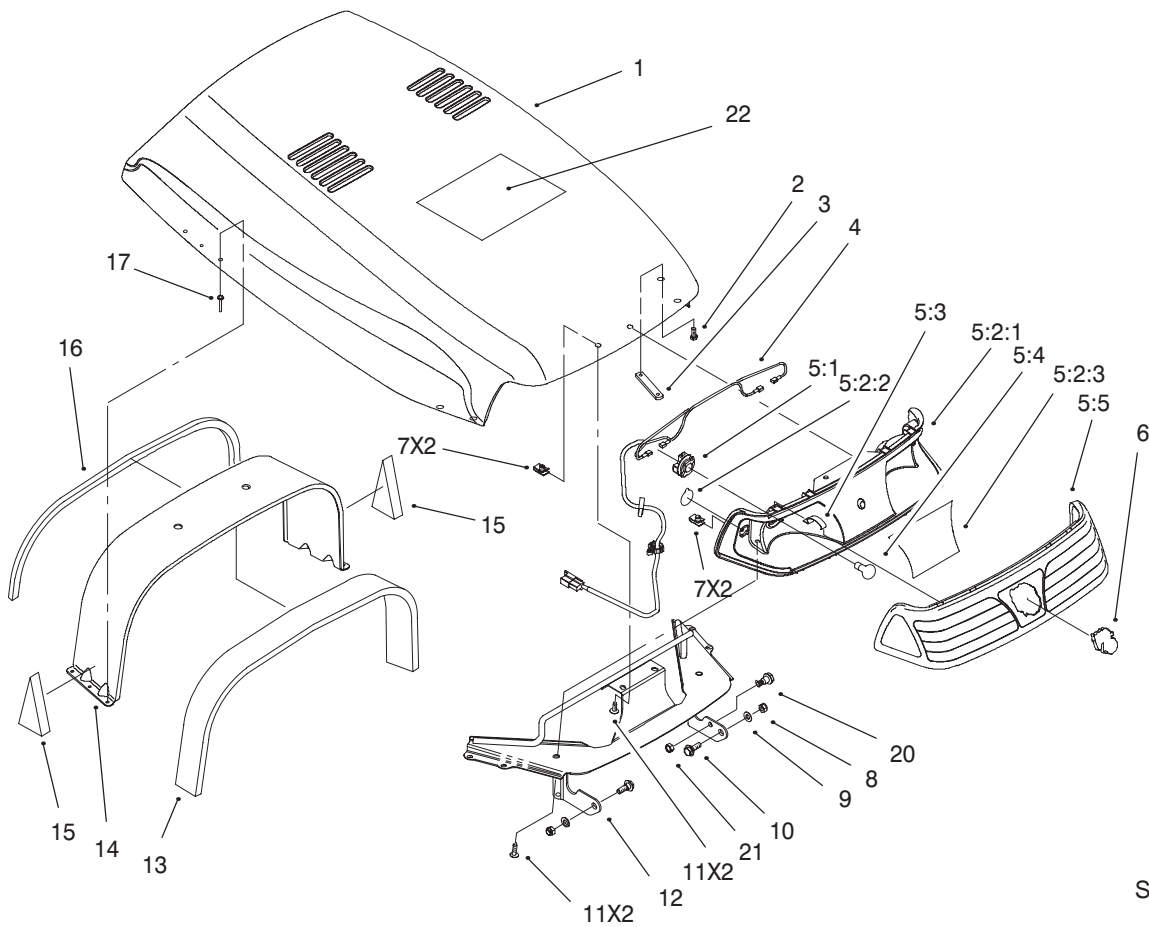
Sheet No.:19

Upper Hydro Lift Assembly

Ref. No.	Part No.	Qty.	Description
1	94-7714	1	Handle – Lift
2	92-1099	1	Bolt-Shoulder
3	95-4168	1	Trunnion – Lift Lever
4	610358	1	Nut-Jam, Locking
5	95-4221	1	Spring – Lift
6	95-4235	1	Extension
7	95-4141	3	Fitting – Hydraulic 90°
7:1	237-21	3	O-Ring
7:2	237-42	3	O-Ring
8	3272-1	1	Pin-Cotter
9	94-7945	1	Hose Asm
10	98-1639	1	Pin-Clevis
11	95-4064	1	Clip-Pin
12	94-2300	1	Lift Cylinder Asm
*12:1	95-4007	1	Seal Kit
13	3296-42	2	Nut-Lock
14	95-4258	2	Cover – Brace
15	3256-57	1	Washer-Flat
16	95-4245	1	Screw – Thread
17	95-4136	1	Fitting – Hydraulic 45°
17:1	237-42	1	O-Ring
17:2	237-21	1	O-Ring
18	94-7944	1	Hose Asm
19	94-7970	1	Tube – Hydraulic

Ref. No.	Part No.	Qty.	Description
21	95-4140	1	Fitting – Hydraulic 90°
21:1	237-22	1	O-Ring
21:2	237-42	1	O-Ring
22	95-4134	1	Fitting – Hydraulic Tee
22:1	237-22	1	O-Ring
22:1	237-42	1	O-Ring
23	321-10	2	Screw-HH
24	95-4019	1	Valve – Hydraulic
25	283-16	1	Pin-Clevis
26	98-1620	1	Link – Lift
27	95-4236	1	Tscrew – PPH
28	94-2100	1	Knob – Lift

* Not illustrated



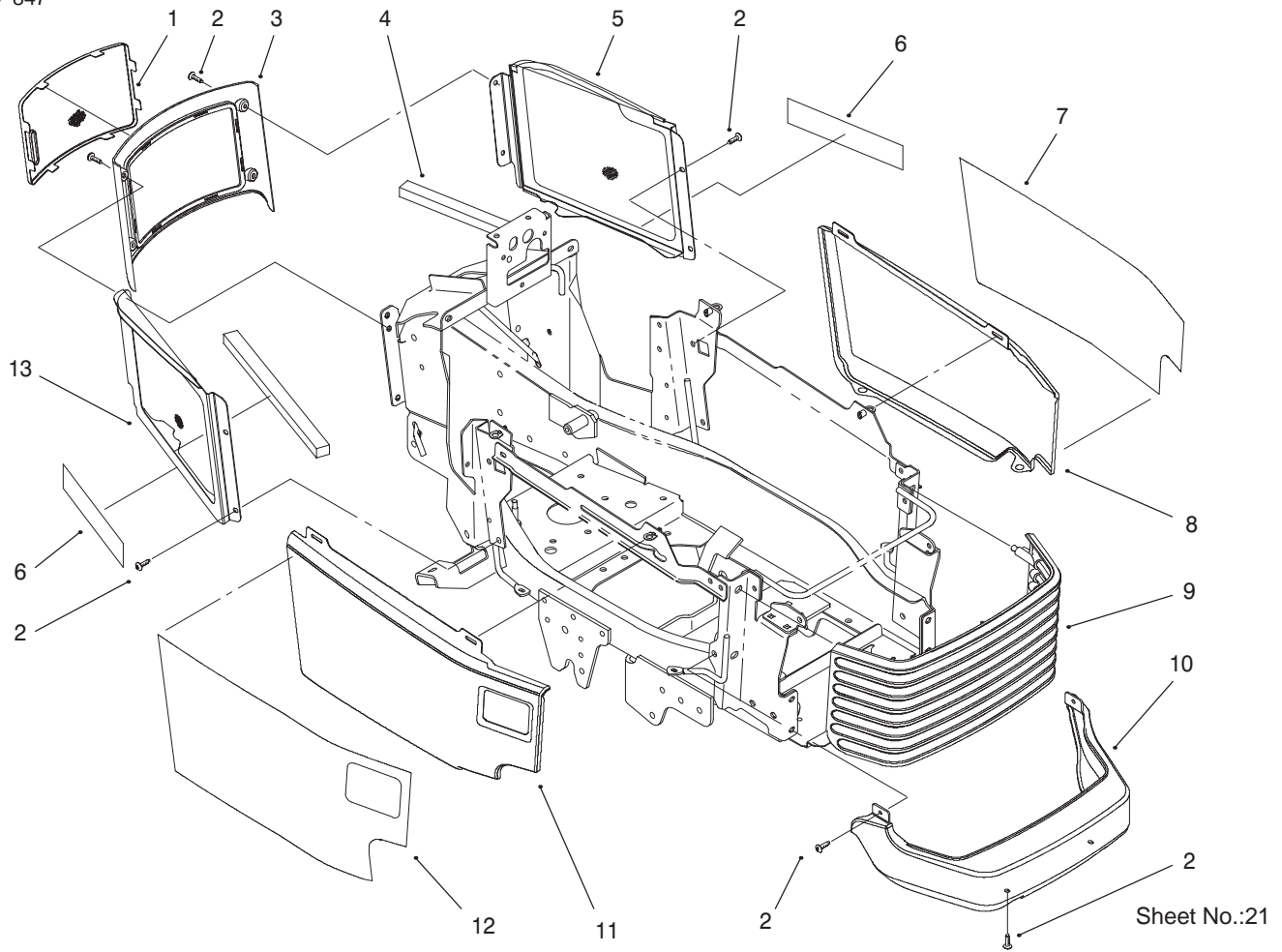
Sheet No.:20

Hood and Headlight Assembly

Ref. No.	Part No.	Qty.	Description
1	98-7205	1	Hood Asm
2	63-8590	4	Screw
3	99-2323	2	Plate-Nut
4	95-0691	1	Harness - Wire, Lights
*	95-4166	1	Headlight Asm
5:1	98-3591	2	Sealed Socket Asm
*	98-7210	1	Light Reflector Asm
5:2:1	94-2098	1	Reflector - Headlight
5:2:2	98-1602	2	Decal - Sidelight
5:2:3	98-3597	1	Decal-Headlight Reflector
5:3	95-4129	4	Clip - Retainer
5:4	7228	2	Bulb -No. 1156
5:5	94-2099	1	Lens - Headlight
6	95-4248	1	Logo - Horsehead
7	107069	4	Clip
8	3296-29	2	Nut-Lock, NI
9	3256-23	2	Washer-Flat
10	27-0410	2	Screw-Shoulder
11	92-7020	4	Screw-HH
12	99-4962-03	1	Bulkhead-Front
13	95-4078	1	Foam Seal - Rear
14	95-3902-03	1	Bulkhead-Rear
15	95-4259	2	Foam - Lower Bulkhead
16	95-4233	1	Foam - Tape

Ref. No.	Part No.	Qty.	Description
17	3269-12	6	Rivet-Pop
20	92-6986	1	Bolt - Shoulder
21	3296-47	1	Nut-Lock, NI
22	100-7304	1	Decal

* Not illustrated



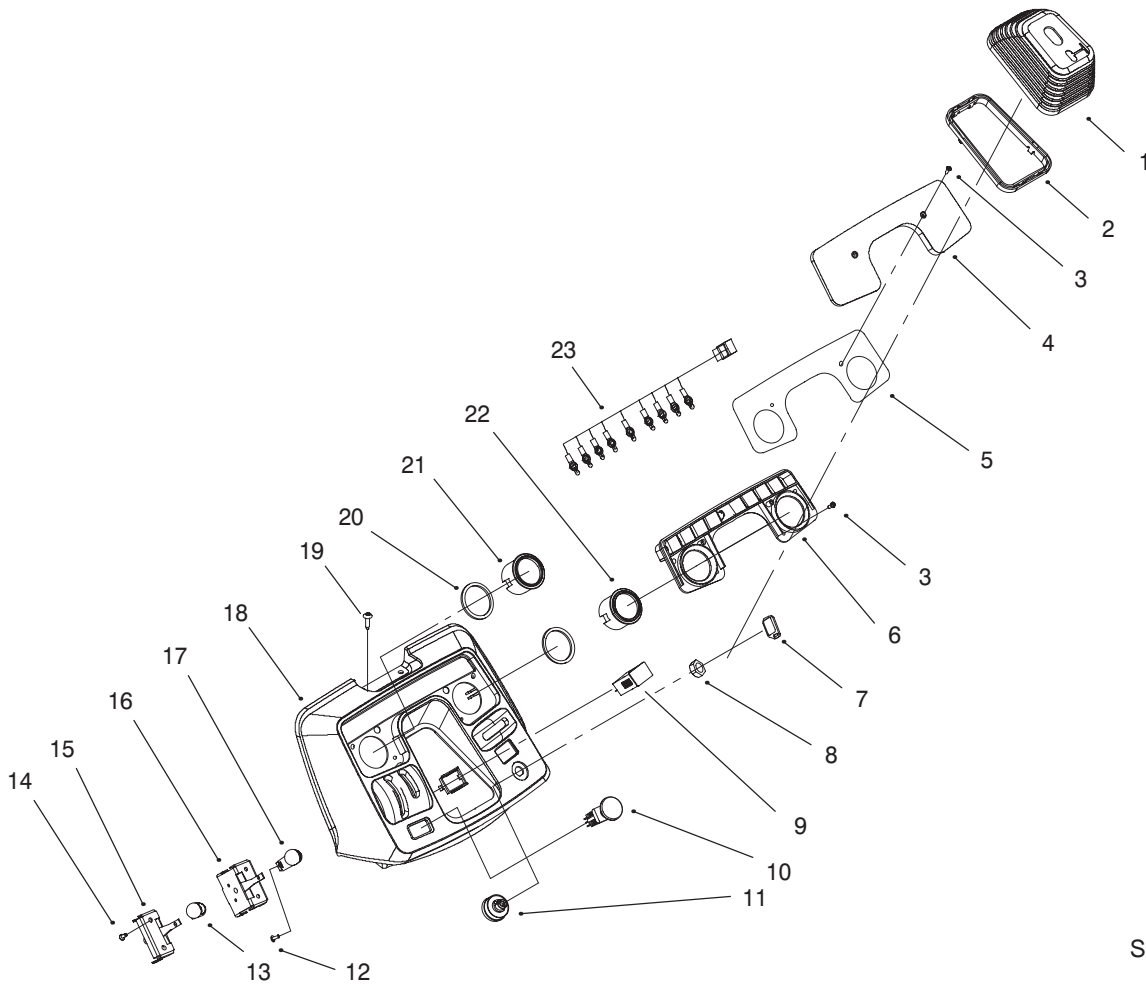
Sheet No.:21

Grill and Side Panel Assembly

Ref. No.	Part No.	Qty.	Description
1	94-2417-03	1	Screen – Rear
2	92-7020	12	Screw-HH
3	94-2093	1	Cover – Rear
4	95-4231	2	Foam – Seal, Side Screen
5	95-4114-03	1	Cover-Side LH
6	98-1605	2	Decal
7	95-4260	1	Decal – Hood LH
8	94-2088-01	1	Sidepanel-LH Hood
9	94-2104	1	Grill
10	94-2103	1	Cover – Bumper
11	94-2087-01	1	Sidepanel-RH Hood
12	95-4261	1	Decal – Hood RH
13	95-4113-03	1	Cover-RH Side

Ref. No.	Part No.	Qty.	Description

PROTOTYPE

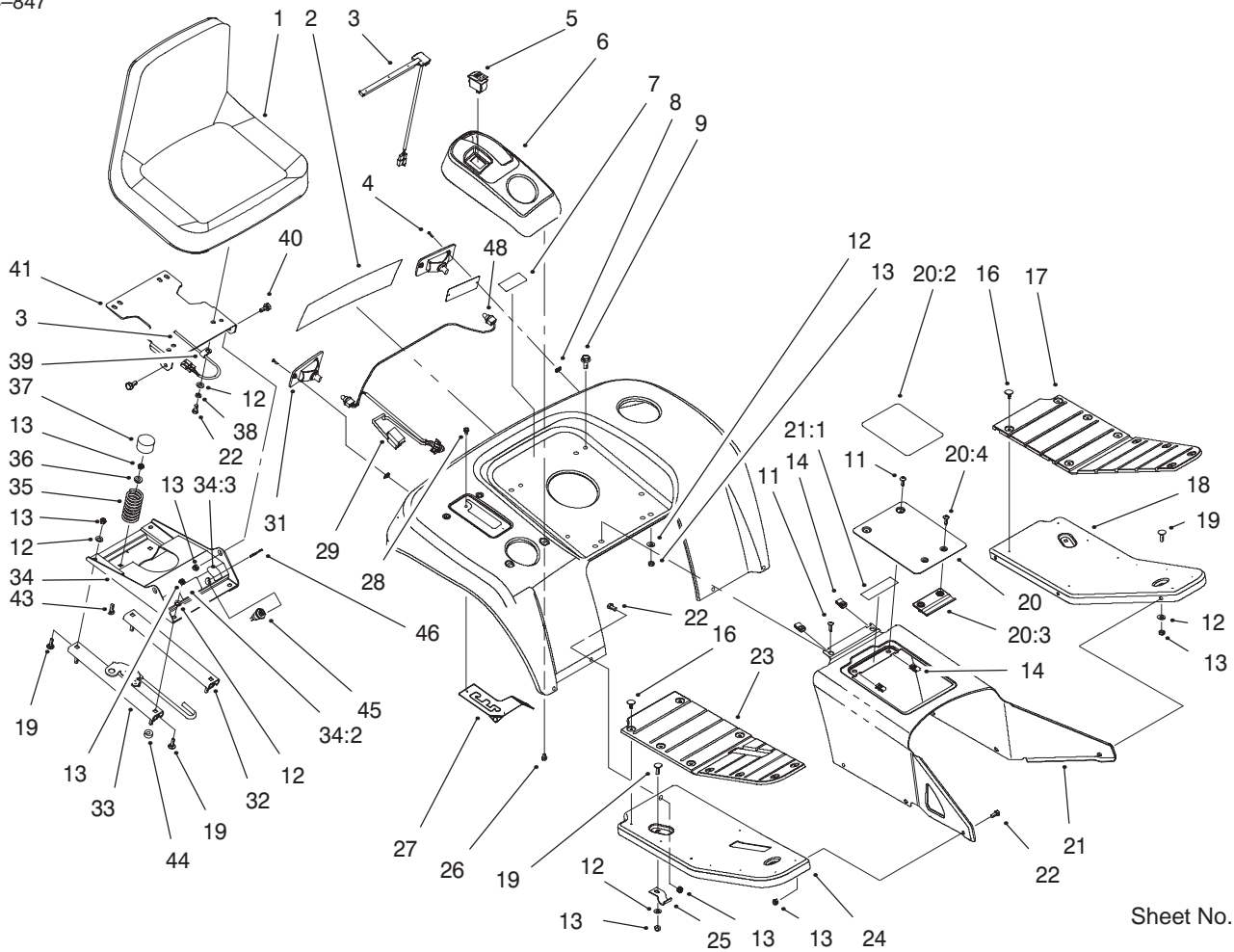


Sheet No.:22

Dash Assembly

Ref. No.	Part No.	Qty.	Description
1	94-2102	1	Boot – Steering
2	95-3844	1	Retainer – Boot
3	95-4234	6	Screw – Pan Hd
4	95-3842	1	Lens – Dash
5	95-4072	1	Decal – Dash Lens
6	95-3843	1	Housing – Light, Dash
7	62-7770	1	Key–Ignition
8	700919	1	Nut
9	94-4208	1	Hourmeter
10	95-7489	1	Switch – PTO
11	92-6785	1	Switch – Ignition
12	95-4236	2	Tscrew – PPH
13	94-2121	1	Knob – Throttle
14	32144-32	4	Screw
15	95-4036	1	Throttle Control Asm
16	95-4035	1	Choke Control Asm
17	94-2122	1	Knob – Choke
18	94-2101	1	Dash
19	92-7020	4	Screw–HH
20	95-4238	2	Gasket – Foam
21	94-7616	1	Gauge – Oil Temperature
22	95-3830	1	Gauge–Fuel
23	99-3720	1	Harness–Light

Ref. No.	Part No.	Qty.	Description
PROTOTYPE			

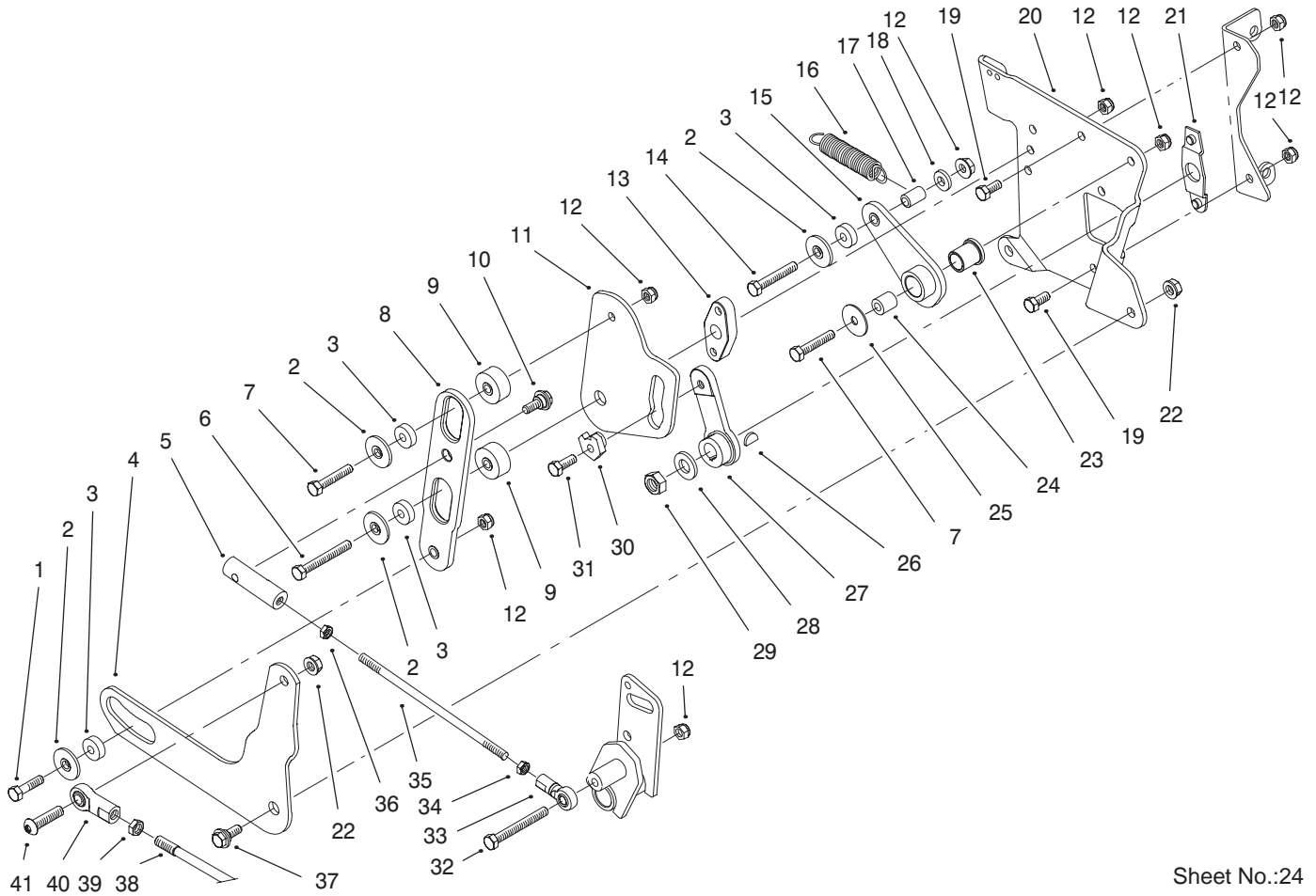


Sheet No.:23

Fender, Footrest and Seat Assembly

Ref. No.	Part No.	Qty.	Description
1	94-3518	1	Seat
2	95-4262	1	Decal - Fender
3	38-1420	1	Switch-Seat
4	3250-29	4	Screw-PPH
5	94-7602	1	Switch - Cruise
6	94-2120	1	Pod - Control
7	76-1340	1	Decal - USA
8	95-4115	4	Nut - Speed
9	3234-29	4	Screw-HHF
11	92-7020	4	Screw-HH
12	3256-23	21	Washer-Flat
13	3296-29	29	Nut-Lock, NI
14	107069	4	Clip
16	3290-479	18	Fastener-Panel
17	94-2096	1	Pad - LH Footrest
18	94-2090-01	1	Footrest - LH
19	3230-16	8	Screw-HH
20	99-6089	1	Cover/Decal Asm
20:2	99-6090	1	Decal-Danger
20:3	95-4107	1	Retainer - Cover
20:4	94-4496	2	Screw-PPH
21	98-5025	1	Tunnel Asm
21:1	80-8760	1	Decal - Danger
22	322-3	18	Screw-HH
23	94-2095	1	Pad - RH Footrest
24	94-2089-01	1	Footrest - RH

Ref. No.	Part No.	Qty.	Description
25	95-3858	2	Bracket-Footerst
26	32144-20	4	Screw-Thread Forming
27	98-8711-03	1	Gate - Hi/Lo Shift
28	32144-4	2	Screw-HH
29	99-3726	1	Harness-Rear
31	94-2124	2	Lamp - Taillight
32	94-2112	1	Slide - Seat Slave
33	94-2177	1	Slide - Seat Latch
34	99-6098	1	Seat Base ASM
34:2	99-2985	1	Decal-Danger
34:3	99-5339	1	Decal-Nmir Switch
35	94-2106-03	2	Spring - Compression
36	105503	2	Bushing
37	95-4242	2	Cap - Seat Spring
38	3253-4	4	Washer
39	98-2390	1	Clamp - R
40	37-8771	2	Bolt-Shoulder
41	94-2111-03	1	Mount - Seat
43	3230-22	2	Screw-CARR
44	4-2390	4	Washer
45	46-5780	1	Switch-Starter
46	62-7770	1	Key-Ignition
48	109045	2	Light Bulb

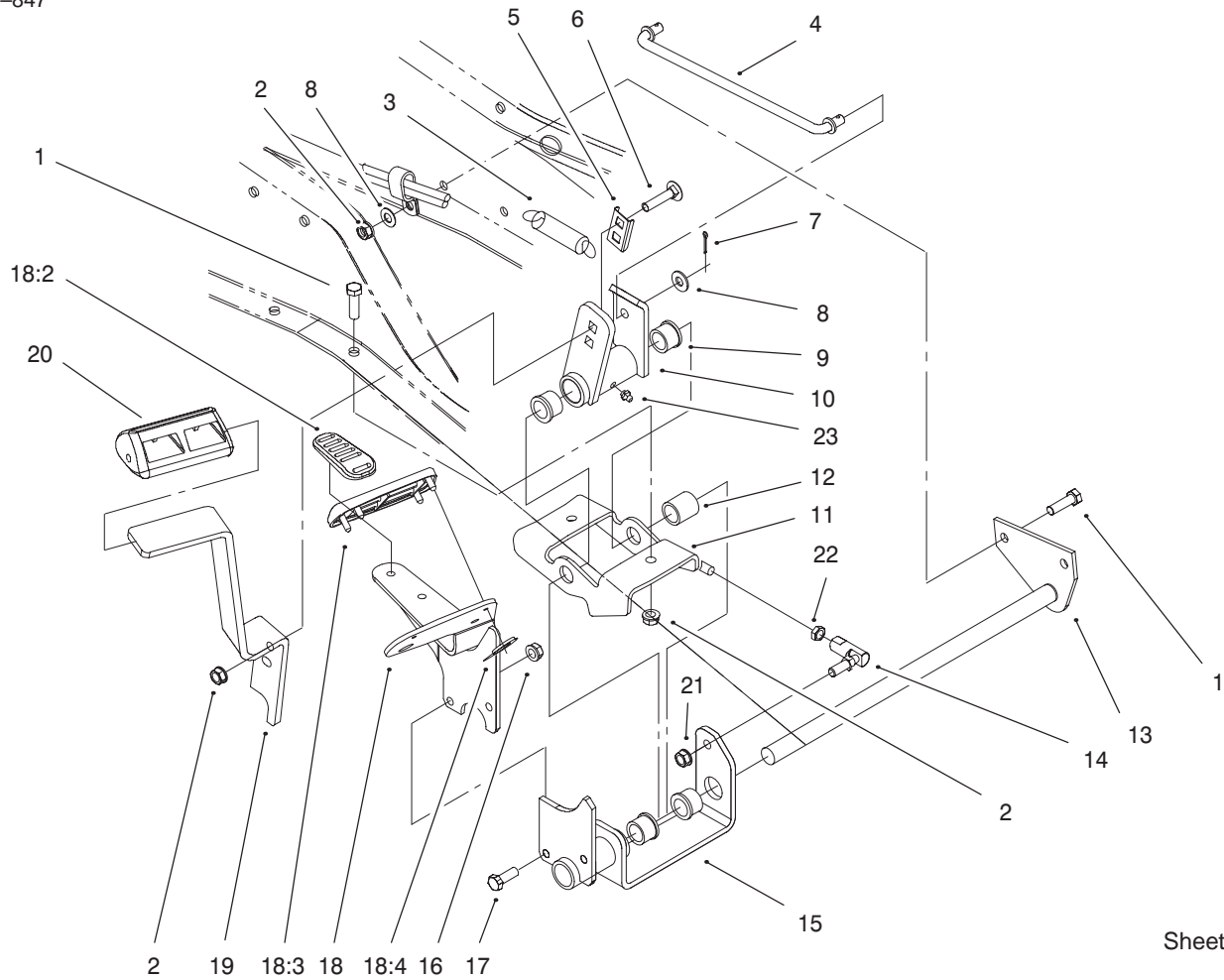


Sheet No.:24

Rear Smart Turn Assembly

Ref. No.	Part No.	Qty.	Description
1	322-6	1	Screw-HH
2	94-2313	4	Retainer - Bearing
3	95-4185	4	Bearing - Ball
4	95-3801-03	1	Slider-Lift
5	94-7637	1	End - Rod, RH
6	322-12	1	Screw-HH
7	322-9	2	Screw-HH
8	94-2144	1	Slider - Speed Control
9	94-2169	2	Standoff - Cam Plate
10	94-7817	1	Bolt - Shoulder
11	94-2145	1	Plate - Cam
12	3296-29	8	Nut-Lock, NI
13	94-2168	1	Standoff - Slider
14	322-10	1	Screw-HH
15	94-7586	1	Arm-Return To Neutral
16	63-1590	1	Spring-Idler
17	94-2309	1	Standoff - Spring
18	3256-23	1	Washer-Flat
19	322-3	2	Screw-HH
20	99-8053-03	1	Plate-Control
21	94-7814	1	Locator-Control Plate
22	108881	2	Nut-Differential
23	94-7913	1	Bushing - Flanged
24	94-7564	1	Spacer
25	3256-57	1	Washer-Flat
26	3257-24	1	Key-Woodruff

Ref. No.	Part No.	Qty.	Description
27	94-7816	1	Arm - Speed Control
28	3256-26	1	Washer-Flat
29	3296-45	1	Nut-Lock, NI
30	94-2468	1	Cam
31	95-4245	1	Screw - Thread Locking
32	322-13	1	Screw-HH
33	94-7571	1	End - RH Rod
34	3220-20	1	Nut-Jam LH
35	94-2497	1	Rod - Slider To Pivot
36	3220-2	1	Nut-Jam
37	94-7582	1	Bolt - Shoulder
38	94-7500	1	Rod-Lift
39	3220-3	1	Nut-Jam
40	92-7008	1	Rod End - Female
41	95-3857	1	Screw-Head, Button



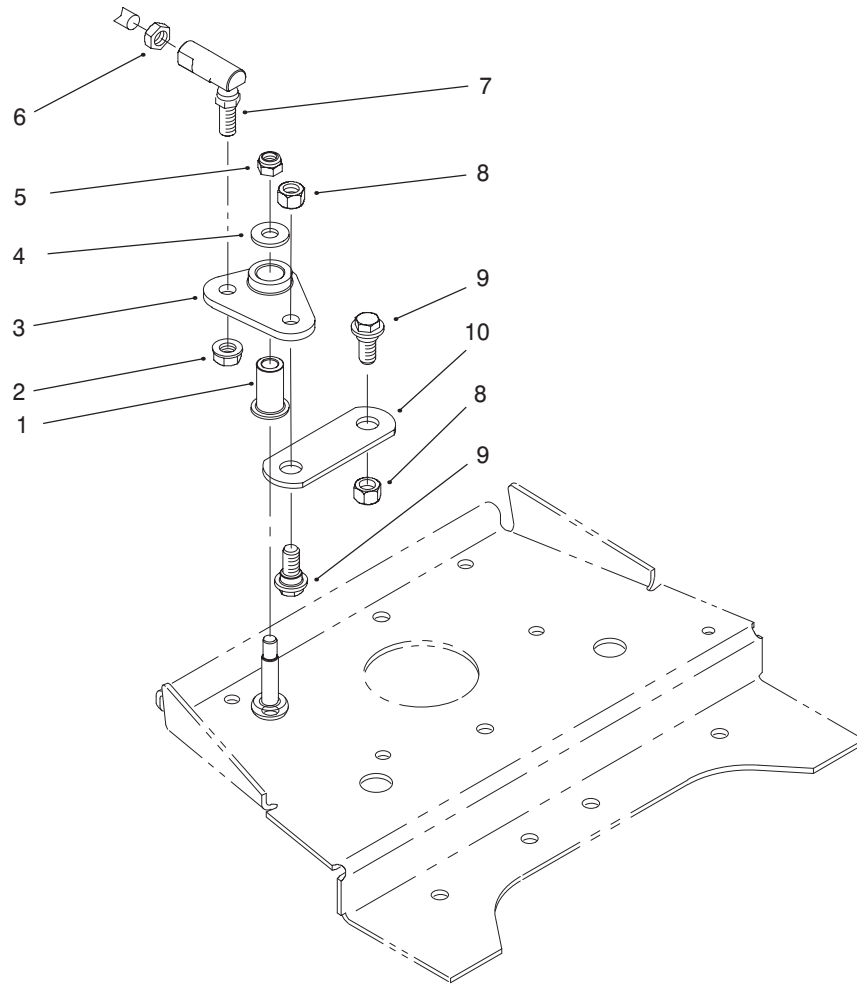
Sheet No.:27

Hydro Controls Assembly

Ref. No.	Part No.	Qty.	Description
1	323-7	4	Screw-HH
2	3296-39	6	Nut-Lock, NI
3	63-1590	1	Spring-Idler
4	94-2499	1	Rod-Pivot Plate To Pedal
5	94-7818	1	Retainer - Screw
6	3231-25	2	Screw-CARR
7	3272-10	2	Pin-Cotter
8	3256-24	3	Washer-Flat
9	98-1636	4	Bushing - Flange
10	94-2351-03	1	Bracket-Brake
11	94-2343-03	1	Bracket - Support
12	94-7501	1	Spacer - Pedal
13	94-2345-03	1	Shaft-Pivot
14	94-7572	1	End - RH Tie Rod
15	94-2342-03	1	Bracket-Forward/Reverse
16	3296-29	2	Nut-Lock, NI
17	322-5	2	Screw-HH
18	99-8050	1	Hydro Pedal ASM
18:2	98-9039	1	Heel Pad-Hydro Pedal
18:3	98-9040	1	Toe Pad-Hydro Pedal
18:4	32112-6	6	Pushnut
19	94-2352-03	1	Pedal - Brake
20	94-2123	1	Pad - Brake Pedal
21	3296-6	1	Nut-Lock, NI

Ref. No.	Part No.	Qty.	Description
22	3220-3	1	Nut-Jam
23	302-5	1	Fitting - Lube

PROTOTYPE

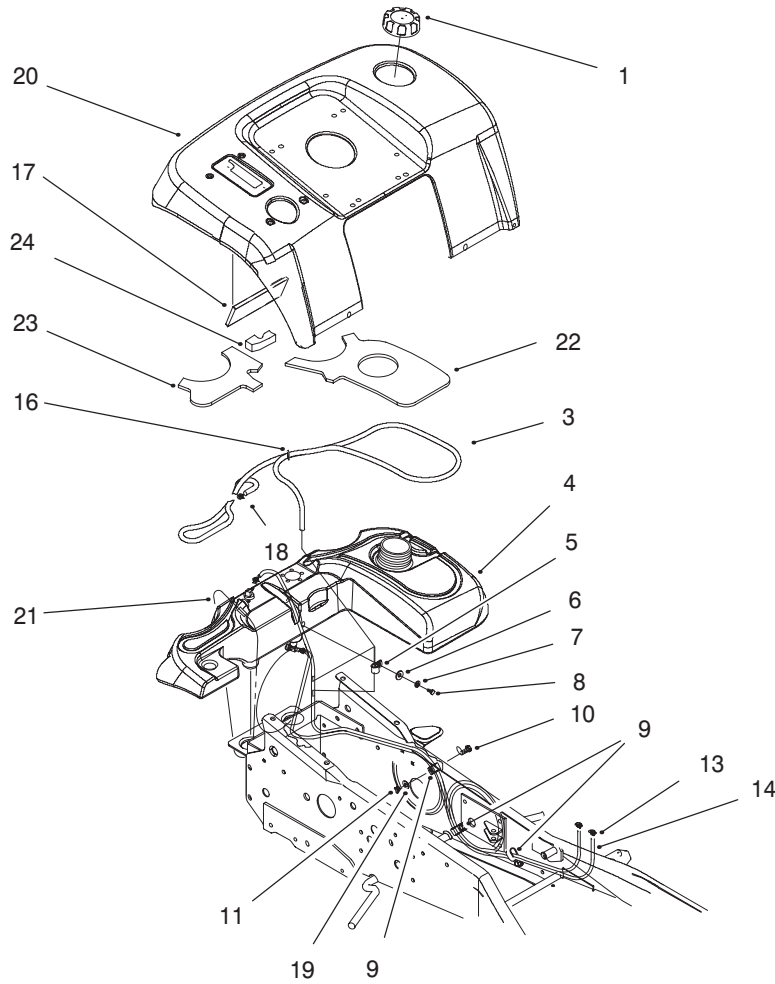


Sheet No.:28

Front Smart Turn Assembly

Ref. No.	Part No.	Qty.	Description
1	94-7919	1	Bushing
2	3296-6	1	Nut-Lock, NI
3	94-7579	1	Lever - Slow Down
4	98-3499	1	Washer - Flat
5	3296-29	1	Nut-Lock, NI
6	3220-16	1	Nut-Jam, LH
7	94-7573	1	End - LH Tie Rod
8	108881	2	Nut-Differential
9	94-7582	2	Bolt - Shoulder
10	94-2409	1	Link-Slow Down

Ref. No.	Part No.	Qty.	Description
PROTOTYPE			

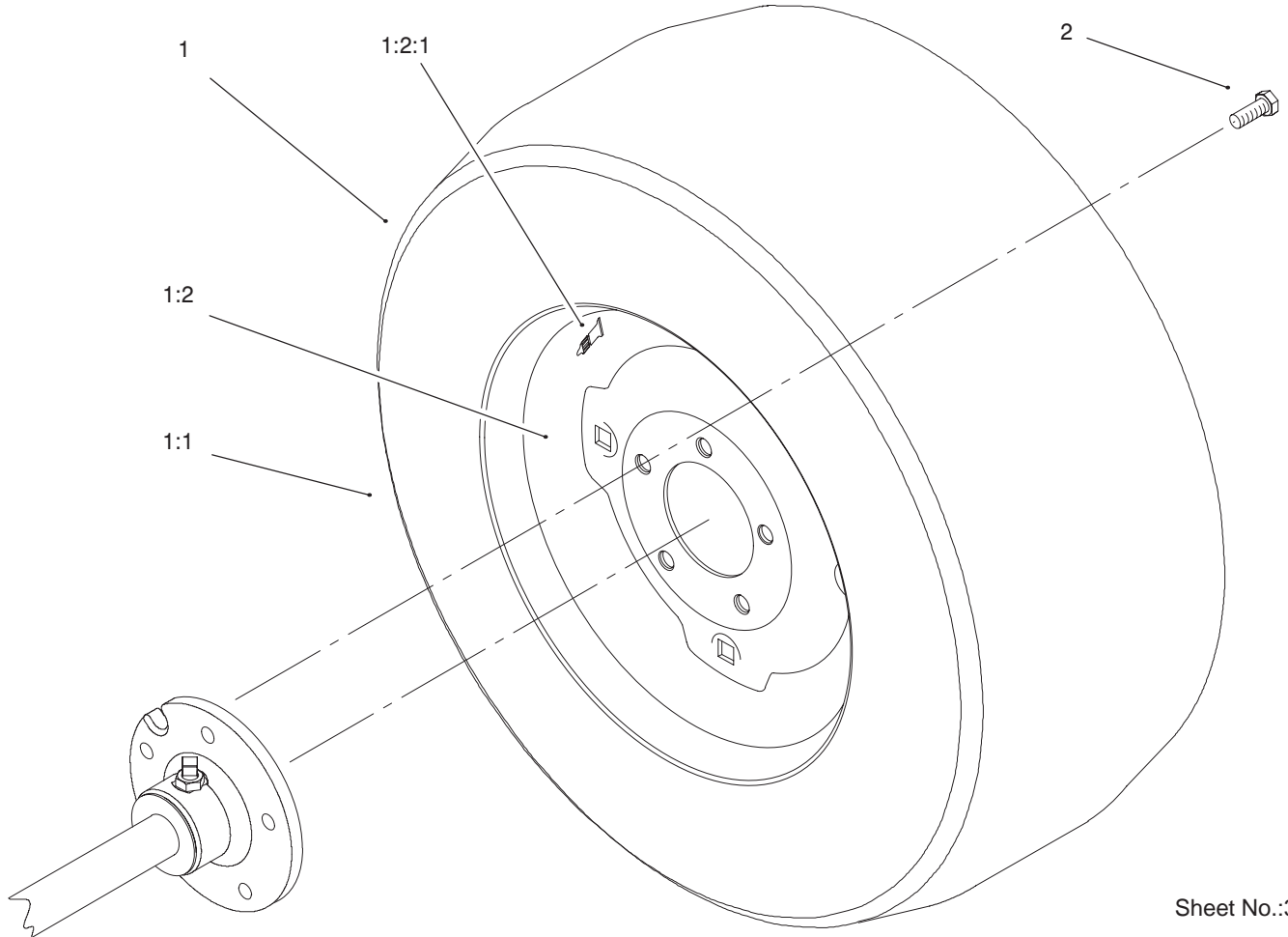


Sheet No.:31

Fender and Fuel System Assembly

Ref. No.	Part No.	Qty.	Description	Ref. No.	Part No.	Qty.	Description
1	95-4192	1	Unleaded Gas Cap ASM				
3	99-8553	1	Hose-Vent				
4	99-6141	1	Gas Tank Asm				
5	2412-94	1	Clamp				
6	3256-22	1	Washer-Flat				
7	3253-3	1	Washer-Lock/Sp				
8	321-3	1	Screw-HH				
9	98-1616	3	Clamp-Tube				
10	323-6	1	Screw-HH				
11	3296-39	1	Nut-Lock, NI				
13	95-4271	2	Clamp-Hose				
14	99-9680	1	Hose-Fuel				
16	94-8189	1	Clamp-Hose				
17	95-4157	1	Foam - Tank Center				
18	614249	1	Tie Strap				
19	3256-24	1	Washer-Flat				
20	98-7208	1	Rear Body Asm				
21	99-5901	1	Tie-Cable				
22	99-6145	1	Foam-Tank				
23	99-6146	1	Foam-Tank				
24	99-6887	1	Foam-Tank Top				

PROTOTYPE



Sheet No.:32

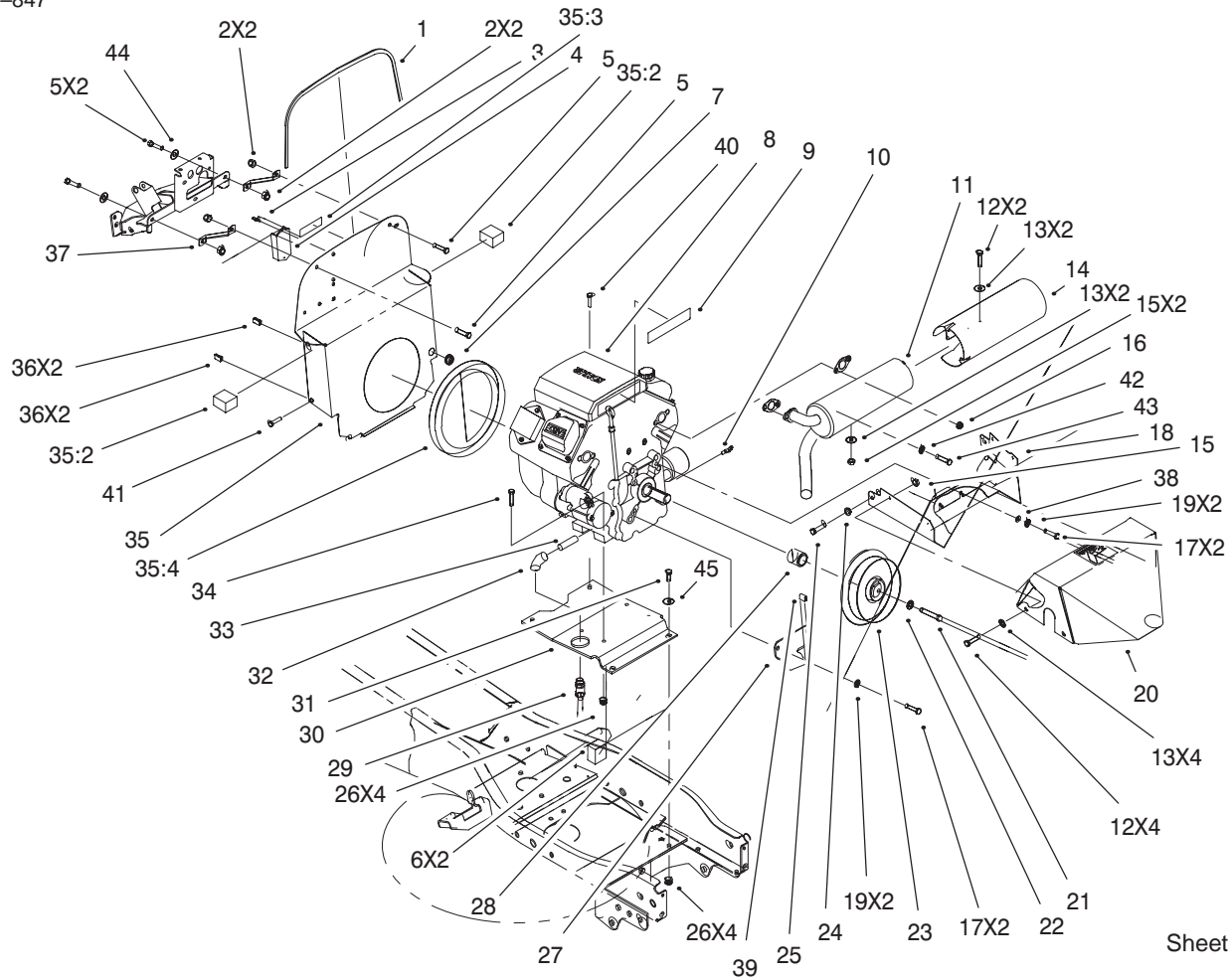
Wheel Assembly

Ref. No.	Part No.	Qty.	Description
1	99-3694	2	Wheel & Tire Asm
1:1	99-2334	1	Tire
1:2	110680	1	Rim Asm
1:2:1	5108	1	Valve-Tubeless Tire
*	7007	1	Tube-Inner
2	83-2720	10	Lug-Bolt

Ref. No.	Part No.	Qty.	Description

PROTOTYPE

* Not illustrated



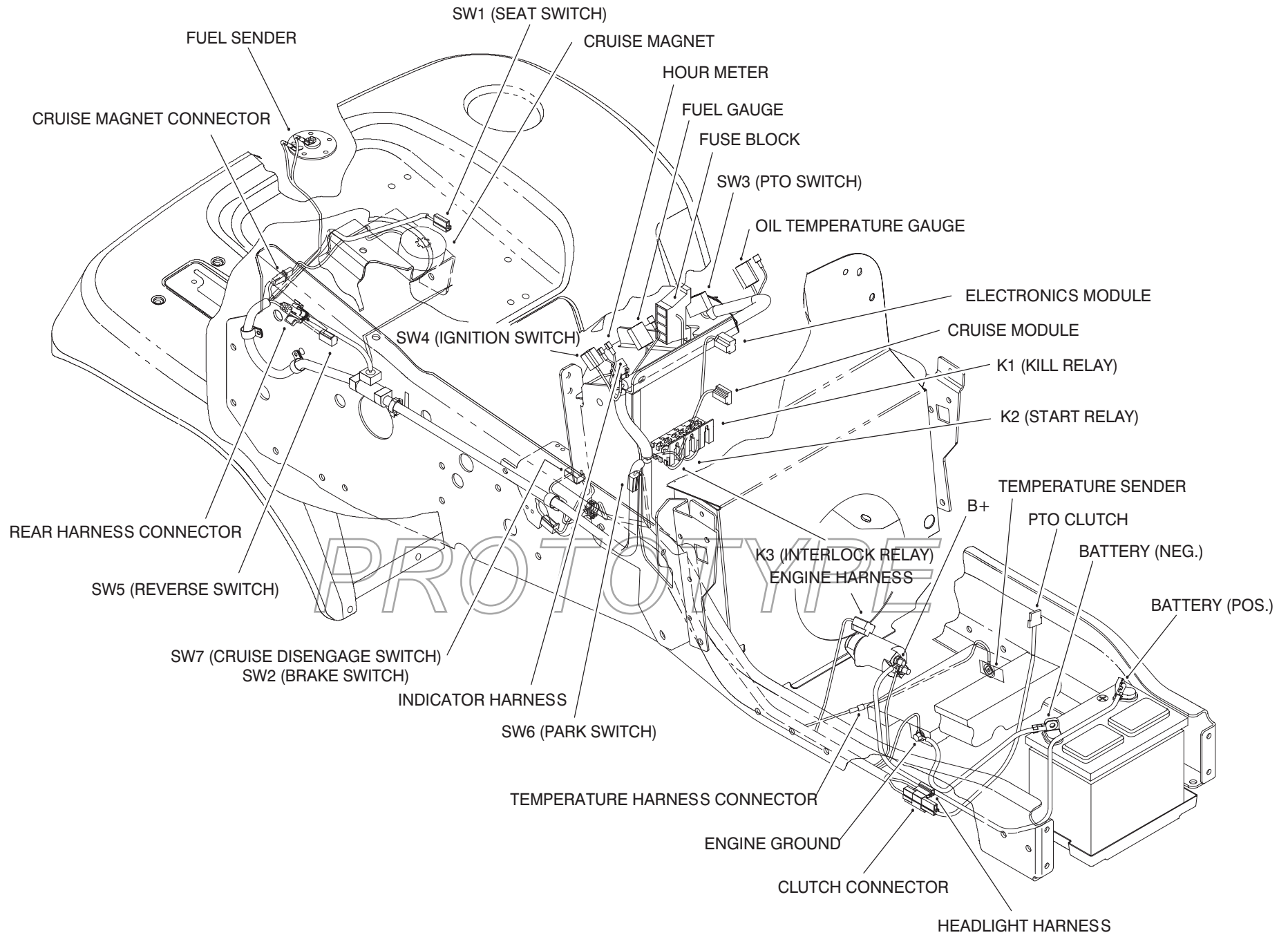
Sheet No.:33

Air Cooled Engine Assembly

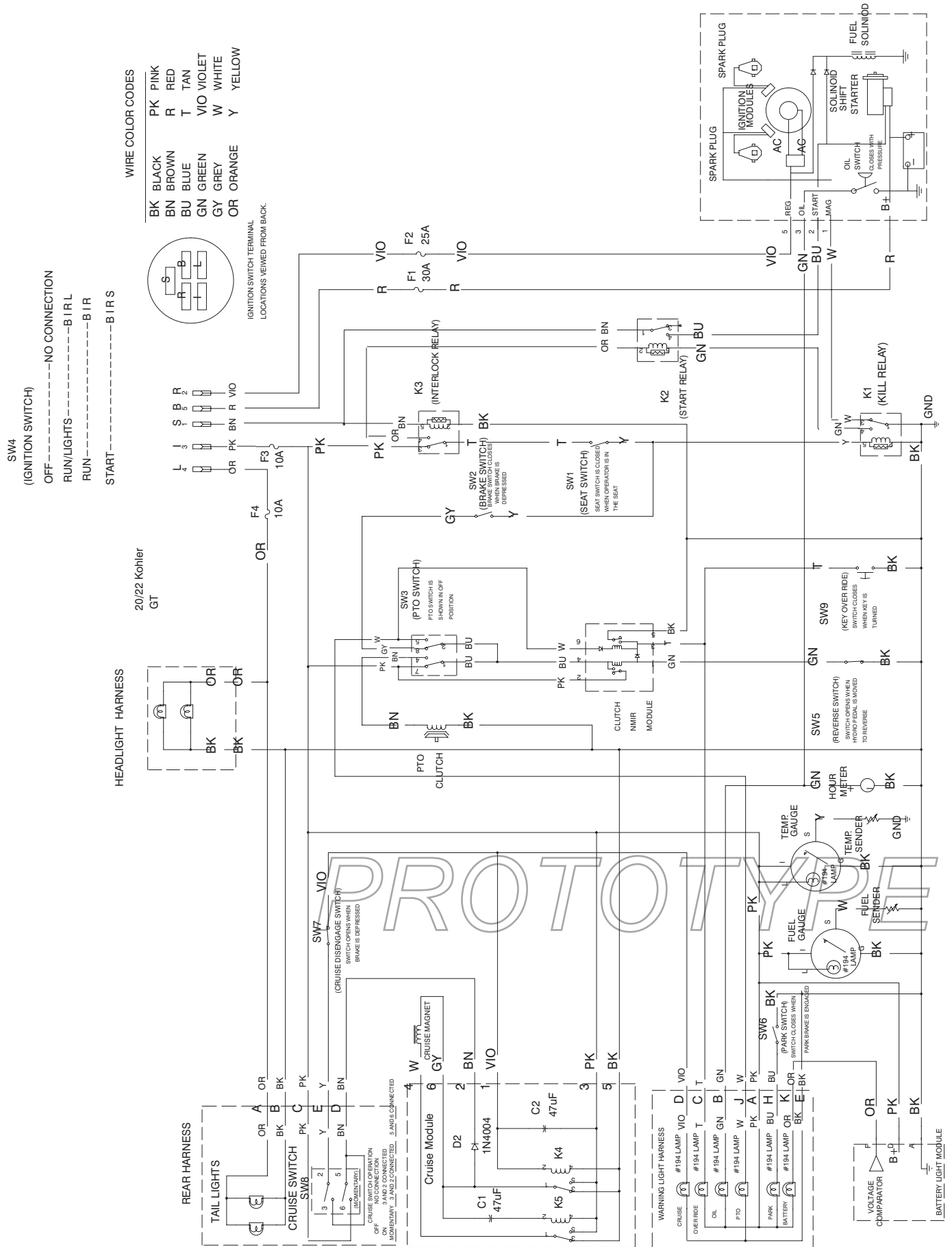
Ref. No.	Part No.	Qty.	Description
1	95-4125	1	Trim – Lock, Bulkhead
2	3296-29	4	Nut–Lock, NI
3	12-5450	1	Screw
4	99-1933	1	Module–Low Voltage
5	322-3	4	Screw–HH
6	98-3086	2	Seal–Foam, Side
7	240-9	1	Grommet
8		1	Engine–Kohler 22HP #CH22S-PS-66545
9	98-3581	1	Decal – 22 HP Engine
10	94-7619	1	Sender – Oil Temperature
11	94-7558	1	Muffler – Kohler
12	321-3	6	Screw–HH
13	3256-22	8	Washer–Flat
14	94-7560	1	Reflector – Heat
15	32152-4	6	Nut–Conelock
16	92-6780	4	Nut–Hex Flange
17	323-6	4	Screw–HH
18	94-7522-03	1	Shrd–Muffler
19	3253-5	4	Washer–Lock/Sp
20	94-7524-03	1	Shroud–Muffler
21	94-7973	1	Screw–HH
22	3256-25	1	Washer–Flat
23	94-2190	1	Clutch – PTO
24	3253-3	2	Washer–Lock/Sp

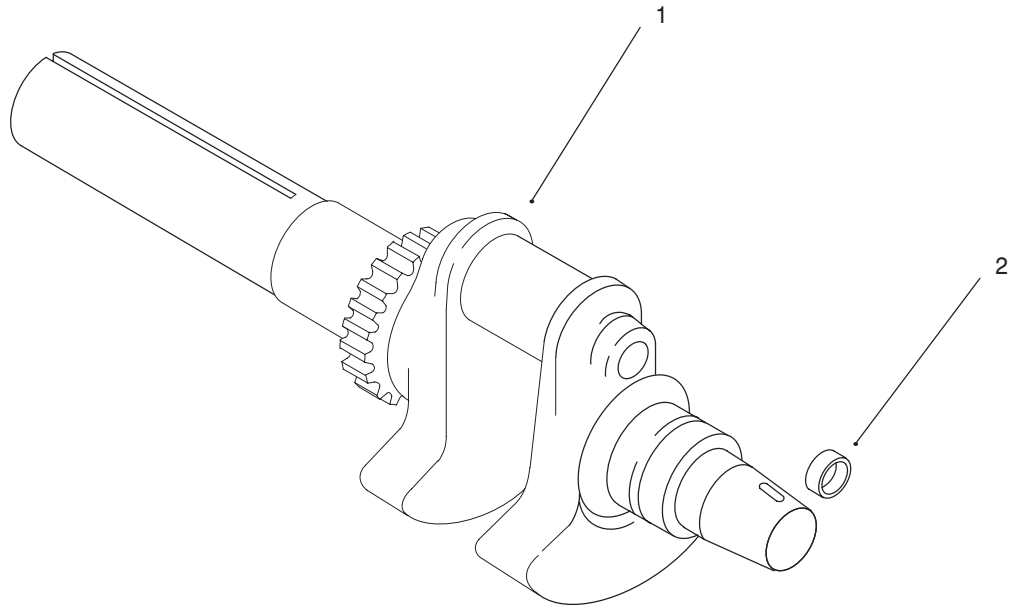
Ref. No.	Part No.	Qty.	Description
25	33113-008	2	Screw–HH
26	3296-39	8	Nut–Lock, NI
27	94-2356-03	1	Clutch – Stop
28	94-2068	1	Spacer – Clutch
29	92-6877	1	Valve – Oil Drain
30	94-2199-03	1	Plate – Engine
31	323-7	3	Screw–HH
32	2811-16	1	Elbow–90°
33	98-7200	1	Nipple
34	323-9	4	Screw–HH
35	98-5060	1	Bulkhead Asm
35:2	98-3086	2	Seal–Foam, Side
35:3	98-5012	1	Decal – Warning
35:4	95-4104	1	Seal – Foam Kohler
36	107069	4	Clip
37	95-4117-03	2	Bracket–Bulkhead
38	3256-24	2	Washer–Flat
39	98-5023	1	Bumper
40	32144-109	1	Screw
41	92-7020	4	Screw–HH
42	3253-4	2	Washer
43	33104-020	2	Screw–HHF
44	3256-23	2	Washer–Flat
45	3256-24	2	Washer–Flat

Wiring Harness Routing



Electrical Schematic Diagram





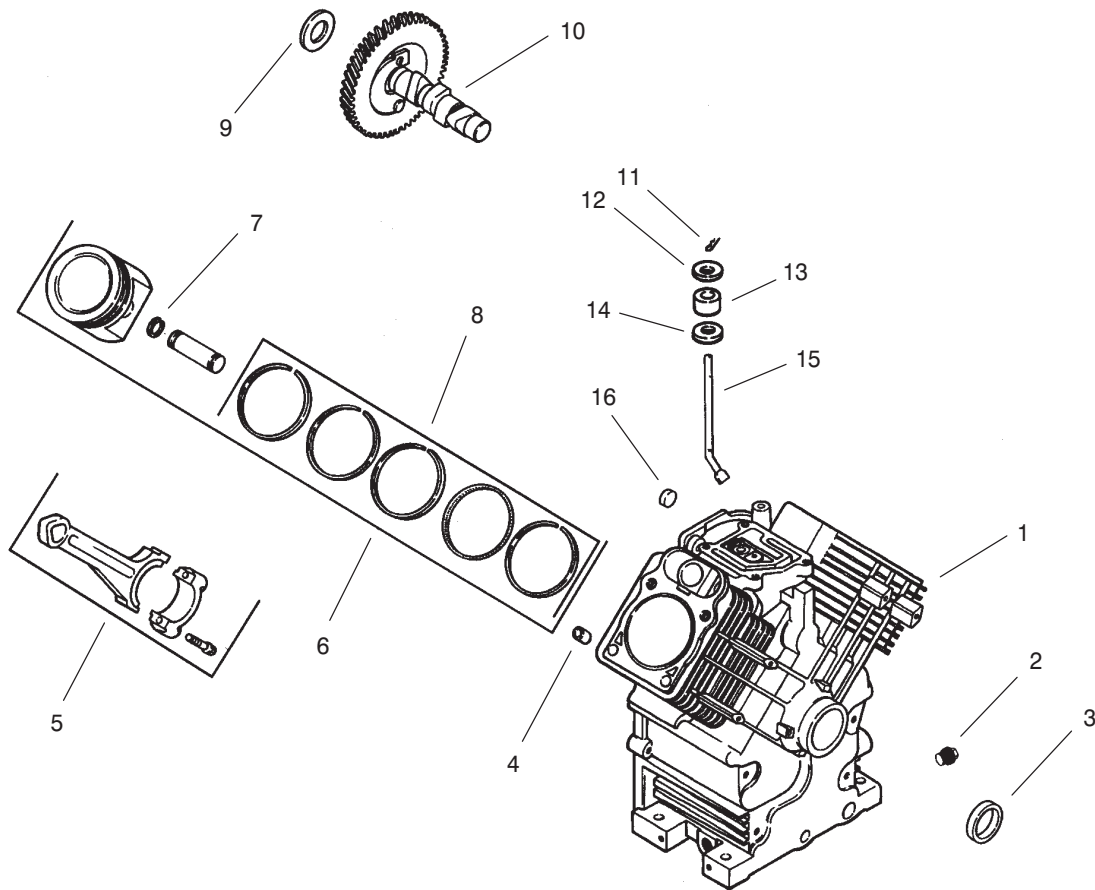
Crankshaft-Kohler #CH22S-PS-66545

Ref. No.	Part No.	Qty.	Description
1	24 014 14	2	Crankshaft
2	52 139 09	1	Plug, cup

Ref. No.	Part No.	Qty.	Description

PROTOTYPE

Obtain parts from you local Kohler dealer

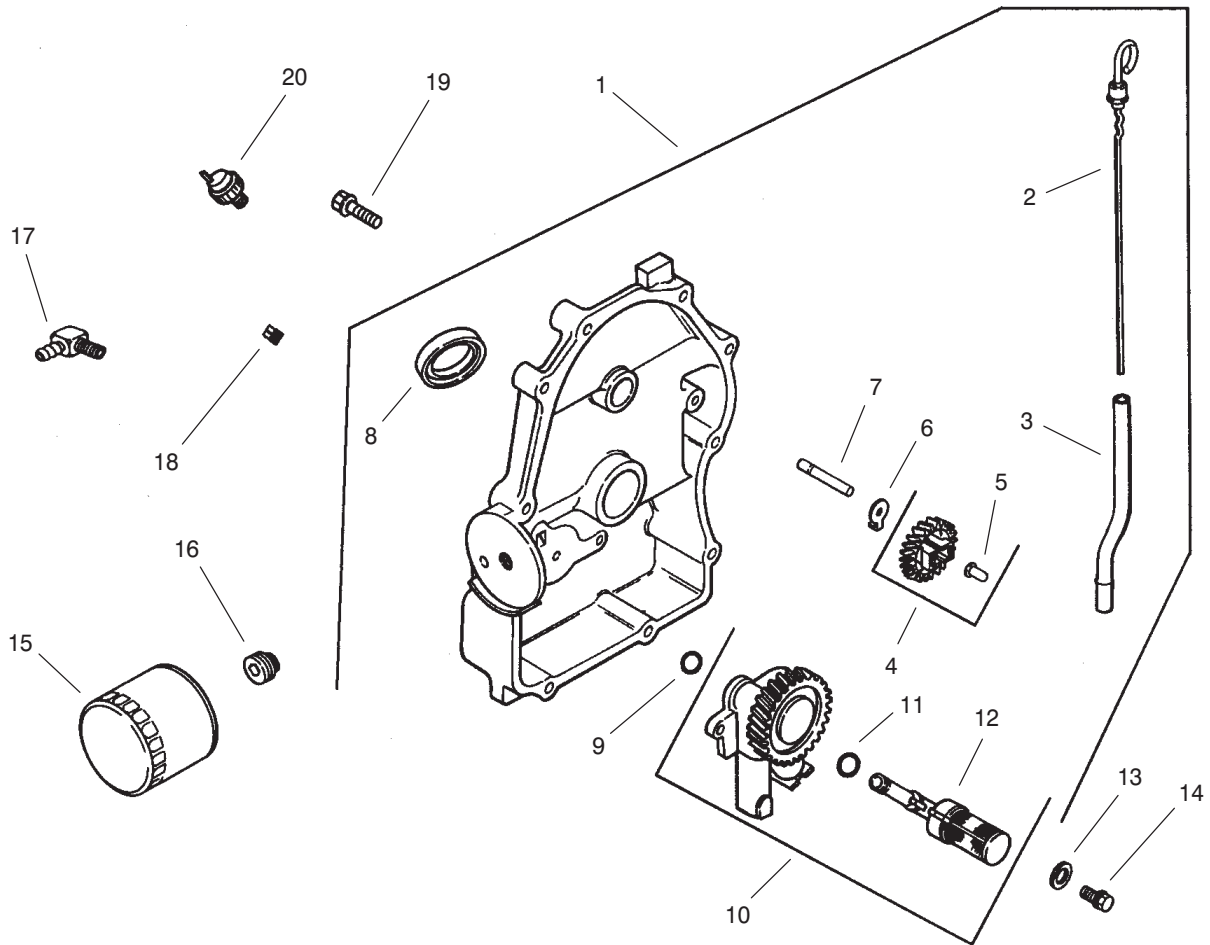


Crankcase-Kohler #CH22S-PS-66545

Ref. No.	Part No.	Qty.	Description
1	X-75-10	1	Cylinder Block
		1	(Use Miniblock 24 782 01)
2	24 032 01	2	Plug, hex. head
3	12 380 17	1	Seal, oil front
4		6	Pin, dowel locating
5	24 067 09	2	Connecting Rod (Std.)
	24 067 10	2	Connecting Rod (.25)
6	24 874 01	2	Piston w/Ring Set (Std.)
	24 874 02	2	Piston w/Ring Set (.25)
	24 874 03	2	Piston w/Ring Set (.50)
7	24 018 01	4	Retainer, piston-pin
8	24 108 01	2	Ring Set (Std.)
	24 108 02	2	Ring Set (.25)
	24 108 03	2	Ring Set (.50)
9	12 422 09	A/R	Shim, camshaft - red
	12 422 13	A/R	Shim, camshaft - black
	12 422 07	A/R	Shim, camshaft - white
	12 422 08	A/R	Shim, camshaft - blue
	12 422 10	A/R	Shim, camshaft - yellow
	12 422 11	A/R	Shim, camshaft - green
	12 422 12	A/R	Shim, camshaft - gray
10	24 012 05	1	Camshaft
11	12 380 04	1	Pin, hitch

Ref. No.	Part No.	Qty.	Description
12	M-0631005	1	Washer, flat
13	12 032 01	1	Seal, governor cross shaft
14	X-25-102	1	Washer, plain
15	24 144 01	1	Shaft, governor cross
16	52 139 09	1	Plug, cup

Obtain parts from you local Kohler dealer



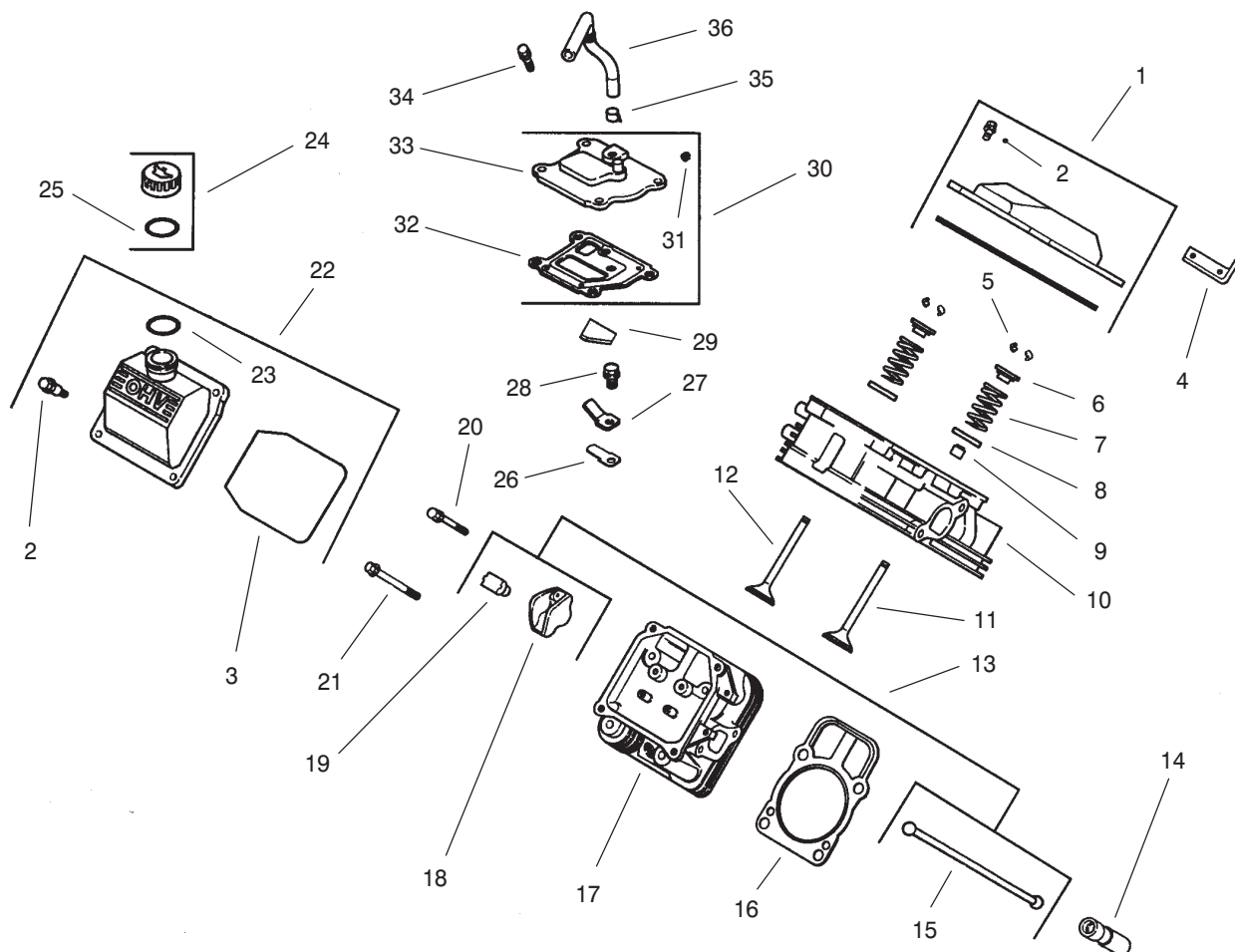
Oil Pan/Lubrication-Kohler #CH22S-PS-66545

Ref. No.	Part No.	Qty.	Description
1	54 009 01	1	Plate, closure assembly (Includes 2-12)
2	24 038 06	1	Dipstick
3	24 123 08	1	Tube, dipstick
4	24 043 12	1	Kit, governor gear (Includes 5)
5	12 380 01	1	Pin, governor regulating
6	52 448 02	1	Tab, locking
7	12 144 02	1	Shaft, governor gear
8	52 032 08	1	Seal, oil (PTO end)
9	24 153 08	1	O-Ring
10	24 393 10	1	Oil pump assembly (Includes 11,12)
11	24 153 01	1	O-Ring, oil pick-up
12	24 381 04	1	Pick-up, oil
13	M-0631005	2	Washer, plain 6 mm
14	M-0645025	2	Screw, hex. flange
15	12 050 01	1	Filter, oil
16	24 136 01	1	Nipple, oil filter
17	25 155 02	1	Connector
18	X-75-23	1	Plug, pipe
19	24 086 16	10	Screw, hex. flange
20	52 099 06	1	Switch, pressure

Ref. No.	Part No.	Qty.	Description
	25 113 05	1	Not Illustrated Decal, oil sentry

PROTOTYPE

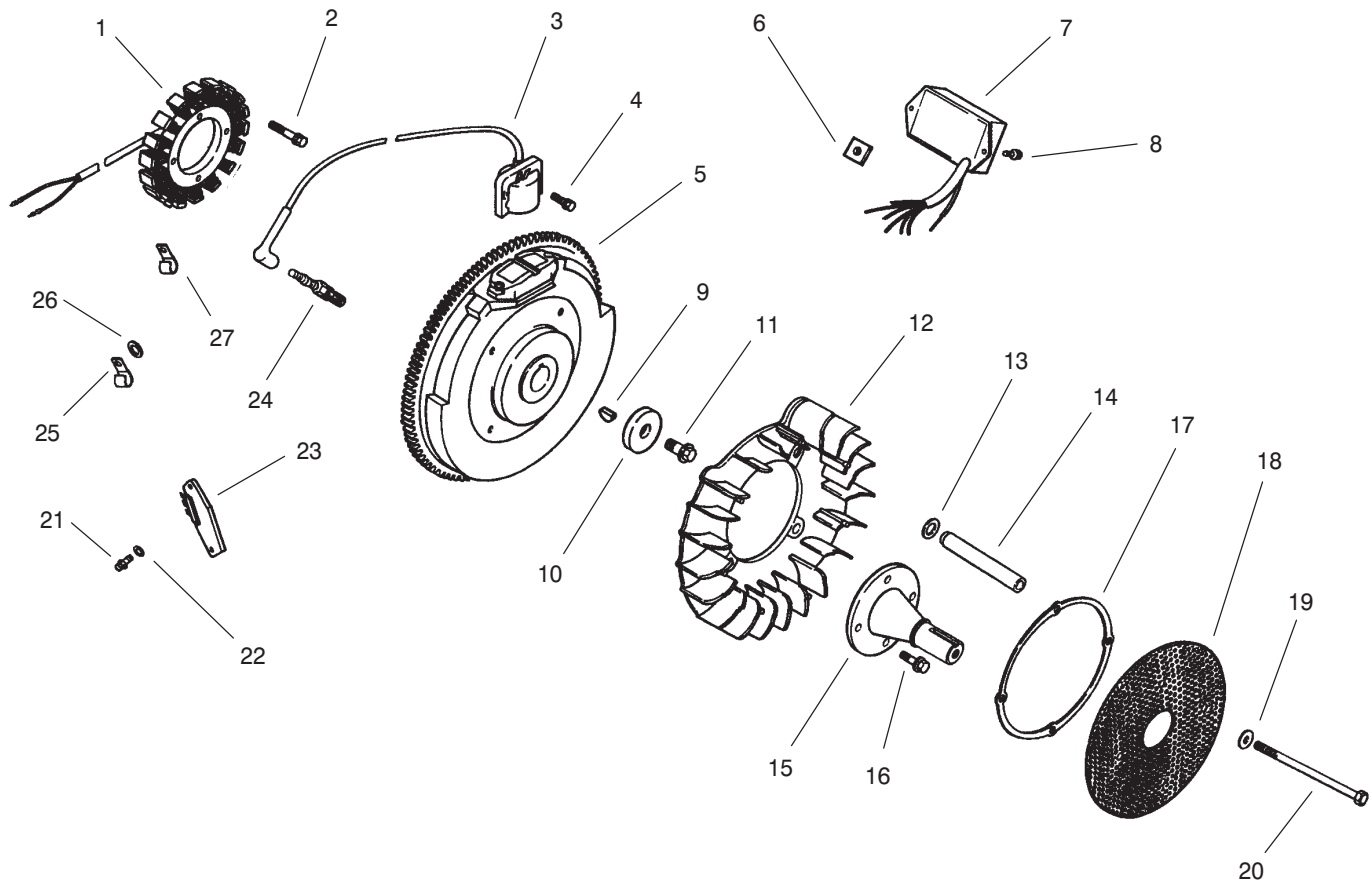
Obtain parts from you local Kohler dealer



Head/Valve/Breather-Kohler #CH22S-PS-66545

Ref. No.	Part No.	Qty.	Description	Ref. No.	Part No.	Qty.	Description
1	24 755 74	1	Kit, valve cover – plain (Includes 2-3)	21	12 086 16	8	Screw, hex. flange
2	24 086 32	4	Screw, shoulder	22	24 755 75	1	Kit, valve cover – oil fill (Includes 2,3,23)
3	24 153 16	1	O-Ring, valve cover	23	24 153 09	1	O-Ring
4	24 445 01	1	Strap, lifting	24	25 755 13	1	Kit, oil fill cap (Includes 25)
5	12 755 03	4	Kit, retainer	25	12 153 03	1	O-Ring, oil fill cap
6	12 173 01	4	Cap, valve spring	26	24 402 03	1	Reed, breather
7	24 089 02	4	Spring, valve	27	12 018 01	1	Retainer, breather reed
8	235011	4	Retainer, spring	28	M-0545010	1	Screw, hex. flange
9	24 032 05	2	Seal, valve stem	29	24 050 01	1	Filter, breather
10	24 318 09	1	Head assembly, #1 cylinder	30	24 033 01	1	Kit, breather (Includes 31-33)
11	24 017 01	2	Valve, intake (Std.)	31	X-75-23	1	Plug, allen head pipe
	24 017 02	2	Valve, intake (.25)	32	24 041 23	1	Gasket, breather
12	24 016 01	2	Valve, exhaust (Std.)	33	24 096 02	1	Cover, breather
	24 016 02	2	Valve, exhaust (.25)	34	M-0645020	4	Screw, hex. flange
13	24 755 66	1	Kit, valve train (Includes 15,18,19)	35	X-426-9	1	Clamp, breather
14	12 351 02	4	Lifter, valve	36	24 326 06	1	Hose, breather
15	24 411 05	4	Rod, push				
16	24 041 08	2	Gasket, cylinder head				
17	24 318 10	1	Head assembly, #2 cylinder				
18	25 186 01	4	Arm, rocker				
19	24 599 01	4	Pivot, rocker arm				
20	M-0640034	4	Screw, hex. flange				

Obtain parts from you local Kohler dealer

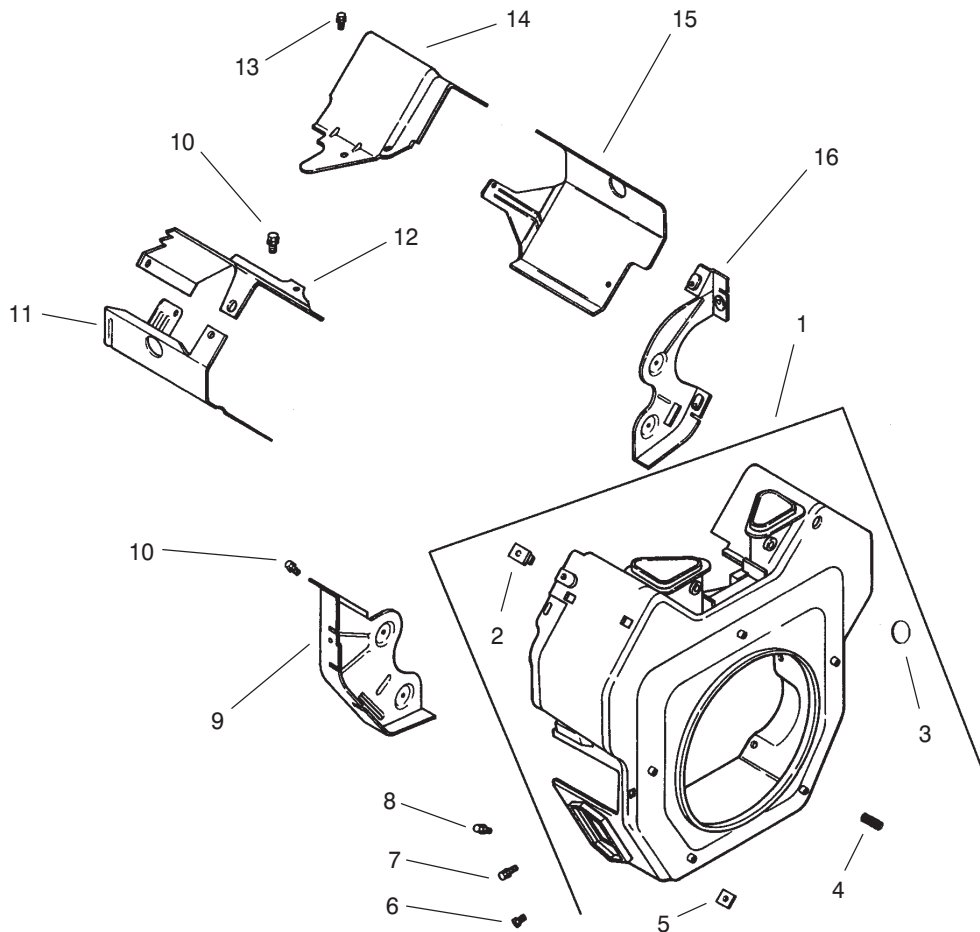


Ignition/Electrical-Kohler #CH22S-PS-66545

Ref. No.	Part No.	Qty.	Description
1	54 755 09	1	Kit, 15 amp stator (Incl. 24 126 71 bracket)
2	M-0548025	2	Screw, hex. cap
3	24 584 03	2	Module, ignition
4	M-0561025	4	Screw, hex. socket hd
5	24 025 02	1	Flywheel
6	24 100 02	2	Nut, plastic
7	24 584 09	1	Module, speed adv.
8	24 086 41	2	Screw
9	X-42-15	1	Key
10	12 468 03	1	Washer, plain
11	12 086 14	1	Screw, hex. flange
12	24 157 03	1	Fan
13	24 468 11	4	Washer, spring
14	24 112 14	4	Spacer, grass screen
15	24 144 25	1	Shaft, front drive
16	M-0839025	4	Screw, hex. flange
17	24 141 06	1	Ring, support
18	24 162 22	1	Screen, grass
19	X-25-53	4	Washer, plain
20	M-0603100	4	Screw, hex. cap
21	24 086 18	2	Screw, phillips hd.
22	X-25-92	2	Washer, plain
23	25 403 03	1	Rectifier-regulator
24	12 132 02	2	Spark Plug

Ref. No.	Part No.	Qty.	Description
25	47 154 01	1	Clip, cable
26	X-25-63	1	Washer, plain
27	48 154 02	1	Clip, cable
			Not Illustrated
	25 518 28	1	Lead, black, (4" - 18 gauge - insulated grip barrel eyelet terminals)
	24 176 42	1	Harness, wiring
	24 176 49	1	Harness, wiring (Incl. 3 connectors)
	236602	1	Connector
	15 155 01	1	Connector
	52 155 04	1	Connector
	24 126 71	1	Bracket, stator wire
	25 086 43	1	Screw, set (adjusts grass scraper blade)
	X-22-11	1	Washer, lock(for ground screw & wire)
	41 155 03	1	Connector
	X-67-3	2	Screw (mounts 5 wire connector to baffle)
	X-25-63	1	Washer, plain

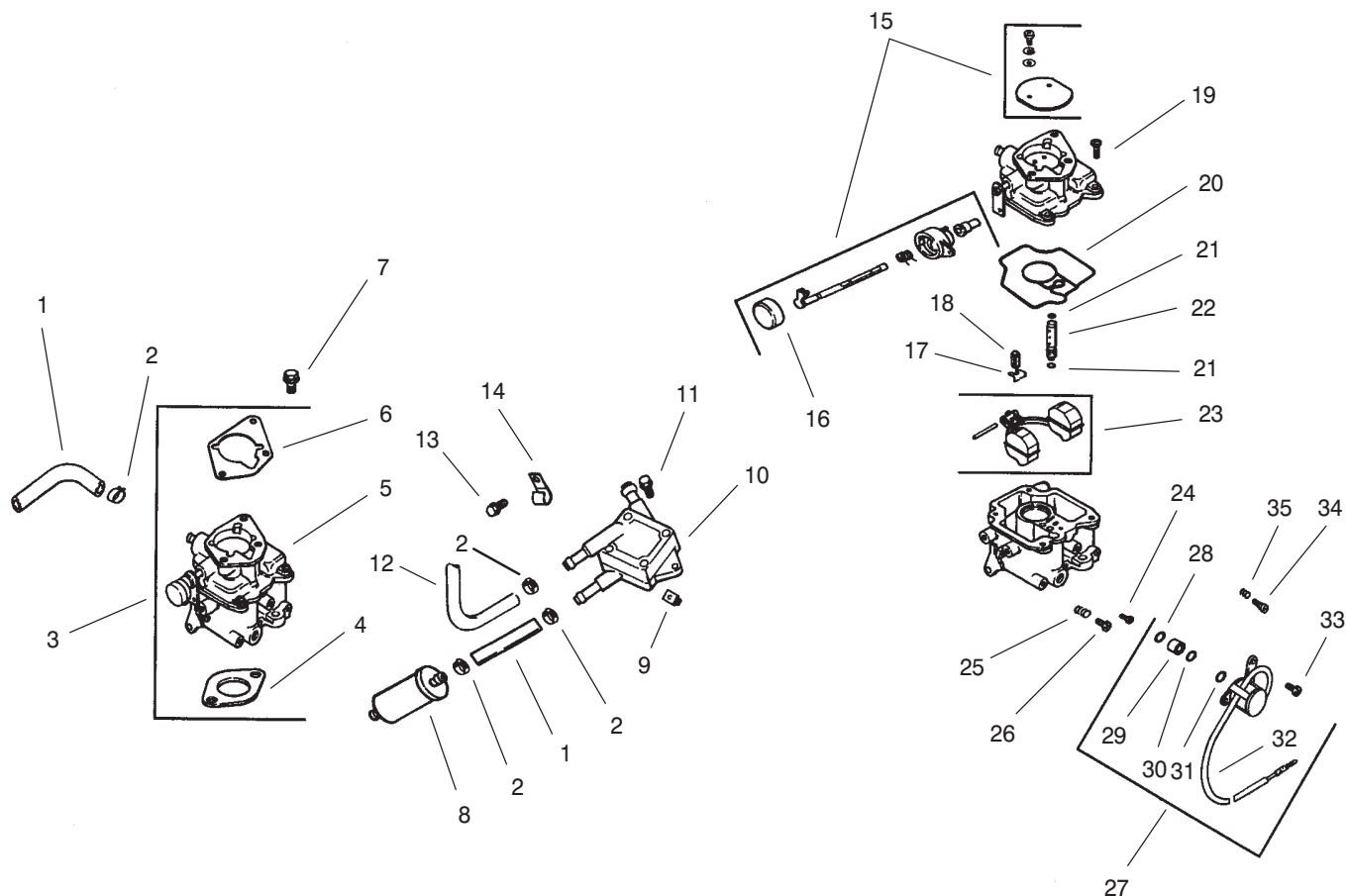
Obtain parts from you local Kohler dealer



Blower Housing and Baffles—Kohler #CH22S-PS-66545

Ref. No.	Part No.	Qty.	Description	Ref. No.	Part No.	Qty.	Description
1	24 027 86	1	Housing, blower (Includes 2-5)				
2	24 100 02	2	Nut, plastic				
3	24 755 90	1	Kit, button plug				
4	24 086 43	1	Screw, set				
5	24 100 01	2	Nut, plastic				
6	M-0551016	1	Screw, hex. flange				
7	M-0545016	5	Screw, hex. flange				
8	M-0545020	2	Screw, hex. flange				
9	24 146 02	1	Plate, backing - #2 side				
10	M-0645016	6	Screw, hex. flange				
11	24 063 20	1	Baffle, cyl. barrel-#2 side				
12	24 063 17	1	Baffle, valley - #2 side				
13	M-0545010	2	Screw, hex. flange				
14	24 063 24	1	Baffle, valley - #1 side				
15	24 063 30	1	Baffle, cyl. barrel-#1 side				
16	24 146 08	1	Plate, backing - #1 side				
	24 113 13	1	Not Illustrated Decal, HP				

Obtain parts from you local Kohler dealer

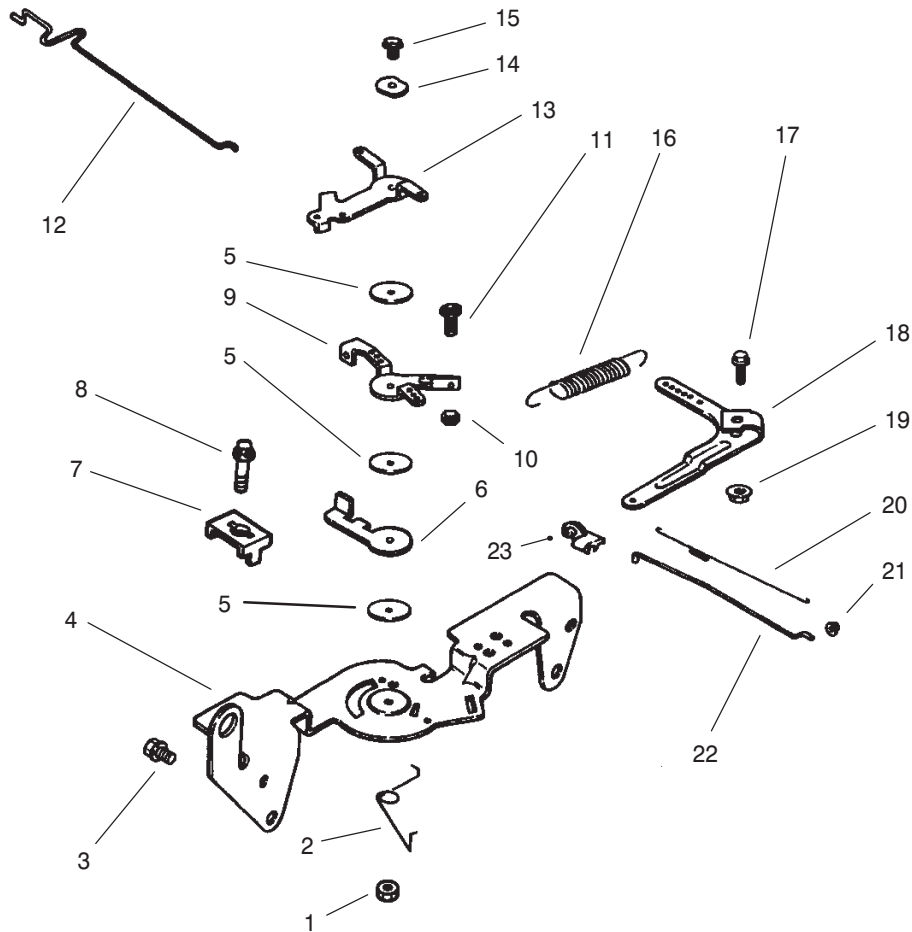


Fuel System—Kohler #CH22S-PS-66545

Ref. No.	Part No.	Qty.	Description
1	25 353 10	2	Line, fuel – 9"
2	X-426-9	6	Clamp, hose
3	24 853 32	1	Kit, carburetor w/gasket (Includes 4-6)
4	24 041 06	1	Gasket, air cleaner base
5	24 053 32	1	Carburetor assembly (Includes 15-35) (For information only not available separately)
6	24 041 17	1	Gasket, carburetor
7	M-0651030	2	Screw, hex. flange
8	24 050 02	1	Filter, fuel
9	24 100 01	2	Nut, plastic
10	24 393 04	1	Pump, fuel – pulse
11	24 086 12	2	Screw, hex. cap
12	24 353 04	1	Line, fuel 17"
13	M-0650012	1	Screw, hex. flange
14	47 154 01	1	Clip, cable
15	24 757 07	1	Kit, choke repair (Includes 16)
16	24 173 02	1	Cap, choke lever
17	24 154 01	1	Clip, inlet needle valve
18	24 462 01	1	Valve, inlet needle

Ref. No.	Part No.	Qty.	Description
19	24 086 09	4	Screw, carburetor body
20	24 041 09	1	Gasket, carburetor body
21	24 153 02	2	O-Ring, slow jet
22	24 337 01	1	Jet, slow
23	24 757 02	1	Kit, float repair
24	24 337 02	1	Jet, main
25	24 089 10	1	Spring, idle adjust screw
26	24 086 10	1	Screw, idle adjusting
27	24 757 01	1	Kit, solenoid (Includes 28-33)
28	24 153 06	1	O-Ring
29	24 521 01	1	Seat, solenoid
30	24 153 05	1	O-Ring
31	24 153 04	1	O-Ring
32	24 435 01	1	Solenoid
33	24 086 07	2	Screw, solenoid
34	24 368 01	1	Needle, idle
35	24 089 11	1	Spring, idle needle
	24 757 03	1	Not Illustrated Kit, carburetor repair

Obtain parts from you local Kohler dealer



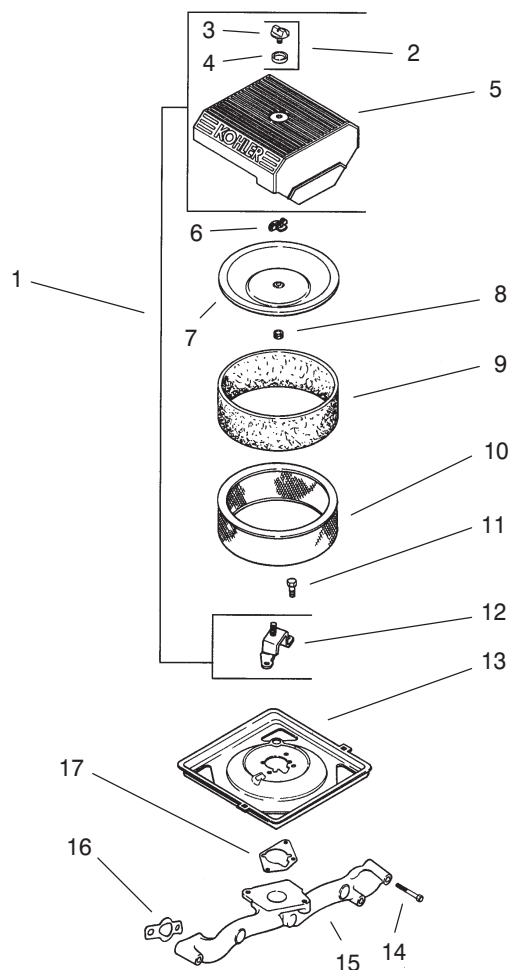
Engine Controls-Kohler #CH22S-PS-66545

Ref. No.	Part No.	Qty.	Description
1	M-0547050	1	Nut, hex. lock
2	24 089 03	1	Spring, choke return
3	M-0645016	4	Screw, hex. flange
4	24 126 56	1	Bracket, control
5	24 468 01	3	Washer, plain
6	24 090 07	1	Lever, throttle actuator
7	12 237 01	2	Clamp, cable
8	M-0545016	2	Screw, hex. flange
9	24 090 03	1	Lever, throttle control
10	M-0446030	1	Nut, hex
11	M-0401030	1	Screw, hex. cap
12	24 079 02	1	Linkage, choke
13	24 090 05	1	Lever, choke
14	41 468 03	1	Washer, spring
15	M-0545020	1	Screw, hex. flange
16	24 089 15	1	Spring, governor
17	SM-0642025	1	Screw, hex. flange
18	24 090 14	1	Lever, governor
19	M-0641060	1	Nut, hex. flange
20	24 089 01	1	Spring, linkage
21	25 158 08	1	Bushing, linkage retaining
22	24 079 01	1	Linkage, throttle
23	25 158 11	1	Bushing, linkage retaining

Ref. No.	Part No.	Qty.	Description

PROTOTYPE

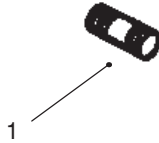
Obtain parts from you local Kohler dealer



Air Intake-Kohler #CH22S-PS-66545

Ref. No.	Part No.	Qty.	Description	Ref. No.	Part No.	Qty.	Description
1	24 743 05	1	Kit, air cleaner cover (Includes 2-5, 12)				
2	54 755 01	1	Kit, knob with sea (Includes 3,4)				
3	25 341 03	1	Knob, cover				
4	24 153 15	1	Seal, air cleaner cover knob				
5	24 096 24	1	Cover, air cleaner				
6	12 100 01	1	Wing Nut				
7	24 096 01	1	Cover, inner air cleaner				
8	24 032 03	1	Seal, inner air cleaner				
9	24 083 02	1	Precleaner, element				
10	47 083 03	1	Element, air cleaner				
11	M-0639016	3	Screw, hex. flange				
12	24 126 21	1	Bracket, air cleaner base				
13	24 094 03	1	Base, air cleaner				
14	M-0651055	4	Screw, hex. flange				
15	24 164 14	1	Manifold, intake				
16	24 041 01	2	Gasket, intake manifold				
17	24 041 06	1	Gasket, air cleaner base				

Obtain parts from you local Kohler dealer



Exhaust-Kohler #CH22S-PS-66545

Ref. No.	Part No.	Qty.	Description
1	25 072 04 Not Illustrated	4	Stud (Includes 2)
	24 782 01	1	Miniblock
	24 755 03	1	Gasket Set

Ref. No.	Part No.	Qty.	Description

PROTOTYPE

Obtain parts from you local Kohler dealer



PROTOTYPE