



Gearbox Service Kit
for OFZ 320 Series and 350 Series Mowers

Part No. 104-2445
Part No. 104-2446

**INSTALLATION
INSTRUCTIONS**

Loose Parts

Note: Use the chart below to identify parts for assembly.

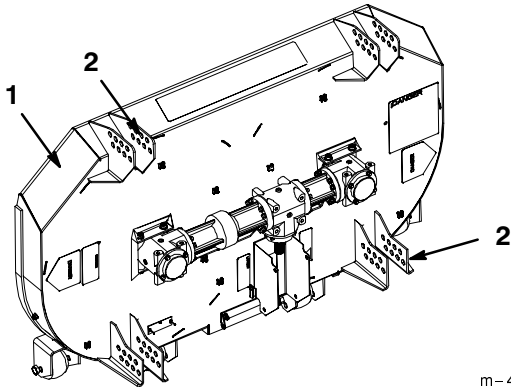
DESCRIPTION	QTY.	USE
Gearbox	1	Install Gearbox
Screw	8	
Washer	8	
Spring Pin	1	
Decal (Used on Z320 Series Decks Only)	1	Install Decal

Identifying Decks

There are two types of decks that this gearbox can be installed on. There is the Z320 Series and the Z350 Series. Identify the deck type you have in figures 1 and 2.

Z320 Series Deck

If you have a deck, with height-of-cut brackets, as shown in figure 1 then proceed to page 2 for installation instructions.



m-4978

Figure 1

1. Z320 Series Deck
2. Height-of-Cut Brackets

Z350 Series Deck

If you have a deck, with height-of-cut posts, as shown in figure 2 then proceed to page 3 for installation instructions.

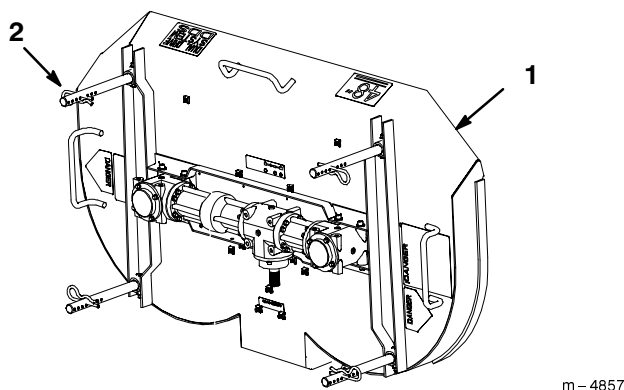


Figure 2

1. Z350 Series Deck 2. Height-of-Cut Posts

Z320 Series Gearbox Installation

Note: Each gearbox assembly has three individual fluid boxes.

Removing Gearbox

1. Remove blades and blade retainers from beneath deck. Save the square key from each gearbox output shaft for use with the new gearbox.
2. Remove any guards connected to the existing gearbox, and disconnect drive shaft.
3. Remove and discard the existing gearbox mounting bolts (8).
4. Remove existing gearbox from top of deck.

Installing Gearbox

1. Place new gearbox on deck. The vertical output shafts should be centered in the two cone-shaped recesses in the top of the deck (Fig. 3).
2. Insert bolts, with washers, through mounting brackets and into gearbox mounting holes (Fig. 3). Torque mounting bolts to 260 ± 25 in-lbs.

IMPORTANT: Torque mounting bolts to 260 ± 25 in-lbs. Bolts have pre-applied thread locker.

3. Connect driveshaft to gearbox (use new spring pin included in kit). Attach any guards that were removed for assembly, and connect blade assemblies to new gearbox.

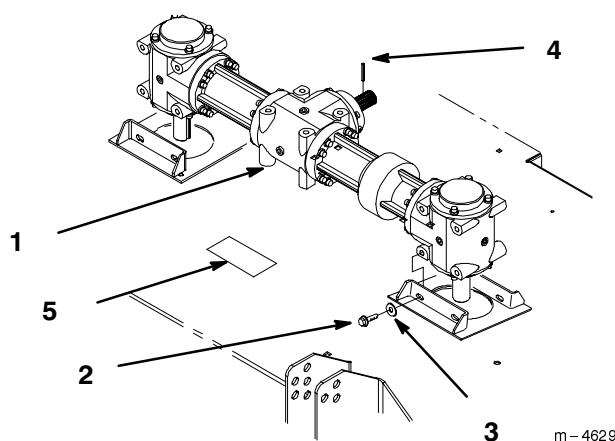


Figure 3

- | | |
|------------|----------|
| 1. Gearbox | 4. Pin |
| 2. Bolt | 5. Decal |
| 3. Washer | |

Installing Decal

A new decal has been provided to replace the existing gearbox lubricant decal on the deck.

1. Thoroughly clean deck in area of lubrication decal. Install new decal over the existing decal.

Z350 Series Gearbox Installation

Note: Each gearbox assembly has three individual fluid boxes.

Removing Gearbox

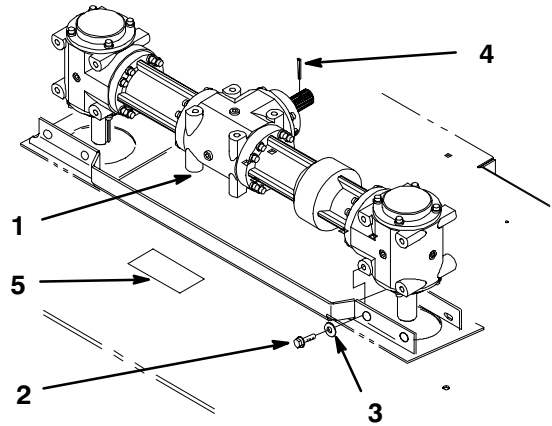
1. Remove blades and blade retainers from beneath deck. Save the square key from each gearbox output shaft for use with the new gearbox.
2. Remove any guards connected to the existing gearbox, and disconnect drive shaft.
3. Remove and discard the existing gearbox mounting bolts (8).
4. Remove existing gearbox from top of deck.

Installing Gearbox

1. Place new gearbox on deck. The vertical output shafts should be centered in the two cone-shaped recesses in the top of the deck (Fig. 3).
2. Insert bolts, with washers, through mounting brackets and into gearbox mounting holes (Fig. 3). Torque mounting bolts to 260 ± 25 in-lbs.

IMPORTANT: Torque mounting bolts to 260 ± 25 in-lbs. Bolts have pre-applied thread locker.

3. Connect driveshaft to gearbox (use new spring pin included in kit). Reattach any guards that were removed for assembly, and connect blade assemblies to new gearbox.



m-4957

Figure 4

- | | |
|------------|---------------|
| 1. Gearbox | 4. Spring Pin |
| 2. Bolt | 5. Decal |
| 3. Washer | |

Gearbox Fluid

Change fluid:

- After initial 100 operating hours.

Note: Fluid will not have to be changed again after initial 100 hour fluid change.

Fluid Type: Automatic Transmission Fluid (Dexron® III or equivalent)

IMPORTANT: Do not mix fluids. Use only Automatic Transmission Fluid.

Gearbox Capacity: 5-1/2 oz. (129.6 ml) each box
16-1/2 oz. (488 ml) for all three boxes

Check fluid: After every 100 operating hours.

Changing Gearbox Fluid

The gearbox fluid must be changed after first 100 operating hours. Change all three gearboxes.

IMPORTANT: Do not mix fluids. Use only Automatic Transmission Fluid.

1. Warm the fluid in gearbox by running the mower deck for a few minutes.
2. For the 320 Series remove footrest and two shields that cover gearbox and PTO shaft (Fig. 5).
3. For the 350 Series remove the deck footrest and guards as necessary.

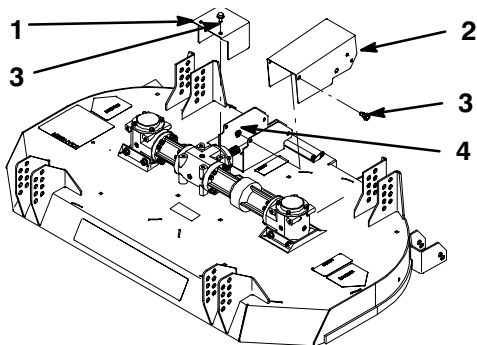


Figure 5

- | | |
|-------------------|----------|
| 1. Gearbox Shield | 3. Screw |
| 2. PTO Shield | 4. Nut |

4. Raise deck to upright position.
5. With deck raised, remove plug on the bottom side of the gearbox. Let fluid fully drain into a pan. (Fig. 6).
6. Reinstall the bottom plug into the gearbox using pipe sealant on threads (Fig. 6).
7. Remove the top plug to fill gearbox (Fig. 6).
8. Fill gearbox with 5-1/2 (129.6 ml) ounces of automatic transmission fluid (Dexron® III).
9. Reinstall the top plug into the gearbox using pipe sealant (Fig. 6).
10. Repeat for remaining gearboxes.

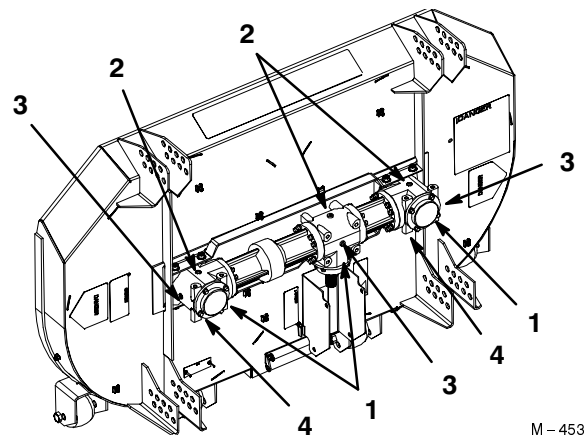


Figure 6

- | | |
|-------------|----------------|
| 1. Gearbox | 3. Side plug |
| 2. Top plug | 4. Bottom plug |

Checking Gearbox Fluid

The gearbox fluid must be checked after every 100 operating hours. Check all three gearboxes.

1. Warm the fluid in gearbox, by running the mower deck for a few minutes.
2. Raise deck to upright position.
3. Remove plug on the side of the gearbox. The fluid level must be up to side hole in gearbox (Fig. 6).
4. If needed, fill automatic transmission fluid (Dexron® III) into top hole until it runs out the side hole in gearbox. Gearbox is full when fluid runs out the side hole (Fig. 6).

IMPORTANT: Do not mix fluids. Use only Automatic Transmission Fluid.

5. Reinstall the top and side plugs into gearbox using pipe sealant on threads (Fig. 6).
6. Repeat for remaining gearboxes.