



Gearbox Service Kit

Z–Master[®] 48” Mower Deck

Part No. 104–2445

Part No. 104–2446

Parts Catalog

Ordering Replacement Parts

To order replacement parts, please supply: the part number, the quantity, and the description of each part desired.

Understanding Reference Numbers

Each identified part in an illustration has a reference number. The reference number for a part also appears in the parts list, along with other information about the part.

This catalog uses two special reference number formats, one to indicate parts in a service assembly and another to indicate the quantity of a given part in an illustration.

Service Assembly Reference Numbers

Parts in service assemblies have reference numbers in the form **a:b**. The **a** represents the reference number of the entire service assembly and the **b** represents a sequential number unique to each part within the service assembly.

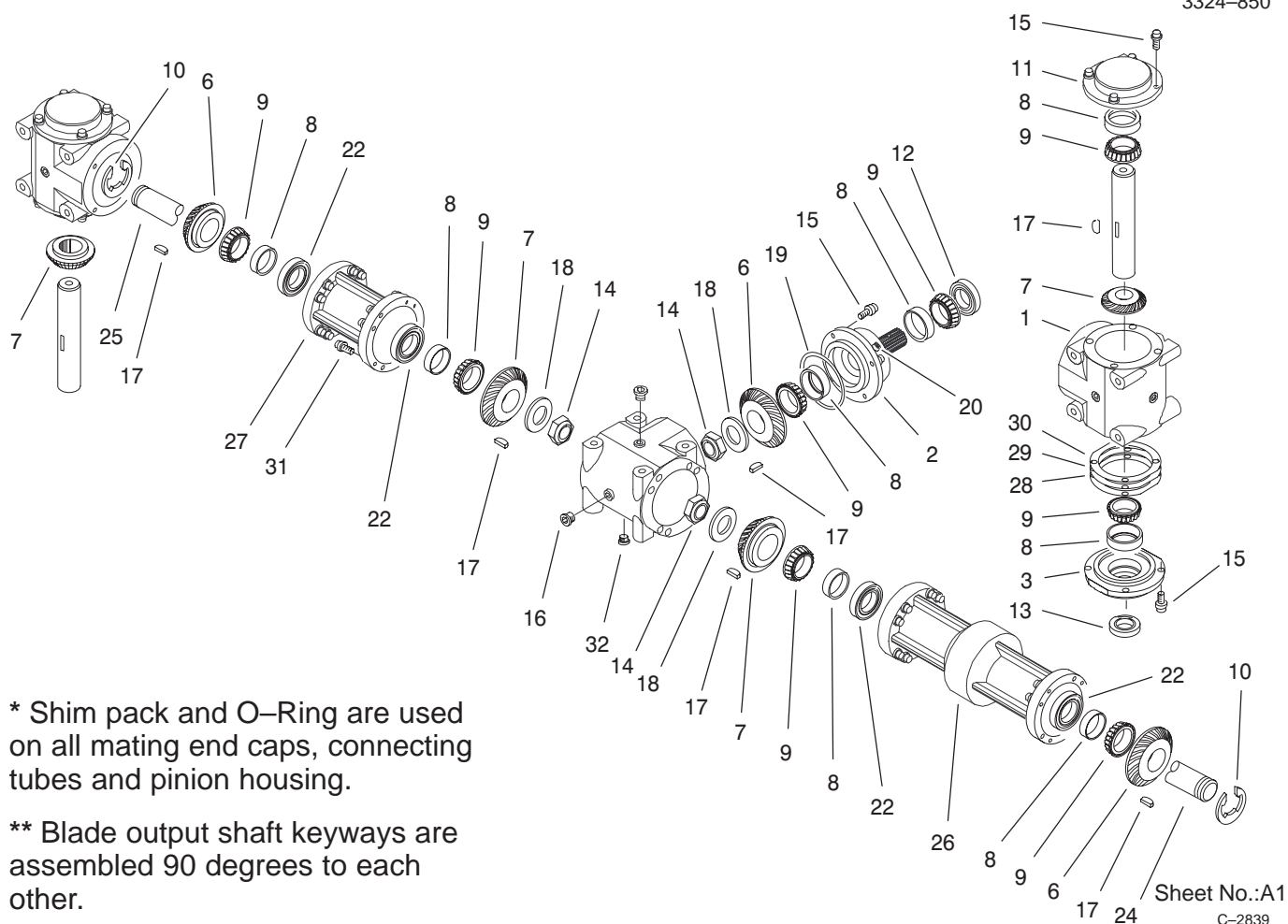
For example, a wheel assembly might be identified by reference number **6**, the tire by **6:1**, the valve by **6:2**, and the wheel by **6:3**. When you order the assembly identified by reference number **6**, you receive all parts identified by reference numbers **6:1**, **6:2**, and **6:3**. However, you may also order any part individually.

Reference numbers of this type appear in illustrations and in part lists.

Reference Numbers Indicating Quantity

In an illustration, if a reference number indicates more than one part, the reference number has the form **nX y**. The **n** represents the quantity of the part, the **X** is the multiplication symbol, and the **y** represents the reference number.

For example, in an illustration, the reference number **2X 37** means that two of the parts identified by reference number **37** are indicated.



Gearbox Assembly

Ref. No.	Part No.	Qty.	Description
1	100-4564	3	Case
2	100-4565	1	Housing – Pinion
3	100-4566	2	Cap – End, Open
*4	100-7755	1	Pinion Service ASM, Splined
*5	100-7754	1	Shaft Service ASM, LH
6	100-4569	3	Gear – 27 Tooth
7	100-4570	4	Gear – 29 Tooth
8	100-4571	10	Cup – Bearing
9	100-4572	10	Cone – Bearing
10	100-4573	2	Ring – Retaining
11	100-4574	2	Cap – End, Closed
12	100-4575	1	Seal
13	100-4576	2	Seal
14	100-4577	3	Nut – Jam
15	100-4578	20	Screw
16	100-4579	8	Plug
17	100-4580	7	Key – Woodruff
18	100-4581	3	Washer
19	100-4582	9	O-Ring
20	100-4583	1	Plug
22	100-4585	4	Seal
*23	104-2427	1	Shaft Service ASM, RH
24	100-4587	1	Shaft – Connecting, Long

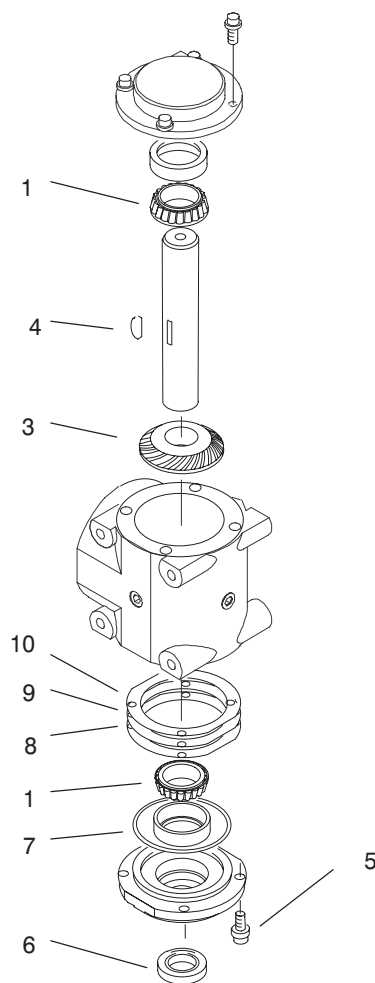
Ref. No.	Part No.	Qty.	Description
25	100-4588	1	Shaft – Connecting, Short
26	100-4589	1	Flange – Connecting, Long
27	100-4590	1	Flange – Connecting, Short
28	100-4591	1	Shim – Brown
29	100-4592	1	Shim – Blue
30	100-4593	1	Shim – Green
31	100-4594	32	Screw
32	100-4595	1	Plug – Magnetic

* Not illustrated



Ref. No.	Part No.	Qty.	Description
2	100-4575	1	Seal
3	100-4565	1	Housing – Pinion
4	100-4583	1	Plug
5	100-4571	2	Cup – Bearing
6	100-4572	2	Cone – Bearing
7	100-4569	1	Gear – 27 Tooth
8	100-4581	1	Washer
9	100-4580	1	Key – Woodruff
10	100-4577	1	Nut – Jam
11	100-4578	4	Screw
12	100-4582	1	O-Ring
13	100-4591	2	Shim – Brown
14	100-4592	1	Shim – Blue
15	100-4593	1	Shim – Green

Ref. No.	Part No.	Qty.	Description



* Shim pack and O-Ring are used on all mating end caps, connecting tubes and pinion housing.

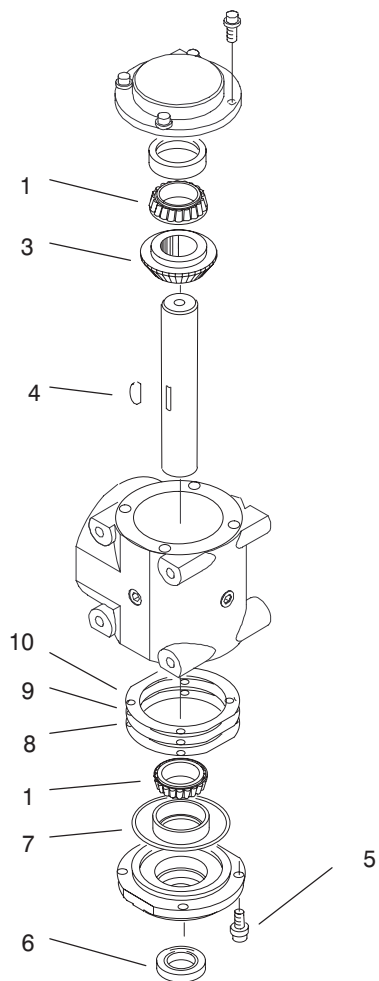
**** Blade output shaft keyways are assembled 90 degrees to each other.**

Sheet No.:A3
C-2969

Lefthand Shaft Service Assembly No. 100-7754

Ref. No.	Part No.	Qty.	Description
1	100-4572	2	Cone – Bearing
3	100-4570	1	Gear – 29 Tooth
4	100-4580	1	Key – Woodruff
5	100-4578	4	Screw
6	100-4576	1	Seal
7	100-4582	1	O-Ring
8	100-4591	2	Shim – Brown
9	100-4592	1	Shim – Blue
10	100-4593	1	Shim – Green

Ref. No.	Part No.	Qty.	Description



* Shim pack and O-Ring are used on all mating end caps, connecting tubes and pinion housing.

**** Blade output shaft keyways are assembled 90 degrees to each other.**

Sheet No.:A4
C-2970

Righthand Shaft Service Assembly No. 104-2427

Ref. No.	Part No.	Qty.	Description
1	100-4572	2	Cone – Bearing
3	100-4570	1	Gear – 29 Tooth
4	100-4580	1	Key – Woodruff
5	100-4578	4	Screw
6	100-4576	1	Seal
7	100-4582	1	O-Ring
8	100-4591	2	Shim – Brown
9	100-4592	1	Shim – Blue
10	100-4593	1	Shim – Green

Ref. No.	Part No.	Qty.	Description

