



Rear Skirt Kit

LT2240 Triple Reel Mower

Model No. 02828

Installation Instructions

Installation

Loose Parts

Use the chart below to verify that all parts have been shipped.

Procedure	Description	Qty.	Use
1	No parts required	—	Prepare the machine.
2	Left flap mount Right flap mount Locknut (16 mm)	1 1 4	Install the flap mounts.
3	Wide deflector Deflector strap Flange-head bolt (6 x 25 mm) Locknut (6 mm) Washer	1 1 10 10 8	Install the wide deflector.
4	No parts required	—	Complete the installation.



1

Preparing to Install the Rear Skirt Kit

No Parts Required

Preparing the Machine

1. Park the machine on a level surface.
2. Lower the cutting units.
3. Engage the parking brake.
4. Shut off the engine and remove the key.
5. Wait for all moving parts to stop.
6. Allow the engine and exhaust system to cool completely.

⚠ CAUTION

If the engine has been running, the exhaust system will be hot and can burn you.

- Keep away from the hot muffler.
- Allow the engine and exhaust system to cool completely.

Raising the Operator's Platform

1. Move the platform-latch handle (Figure 1) toward the front of the machine until the latch hooks clear the locking bar.

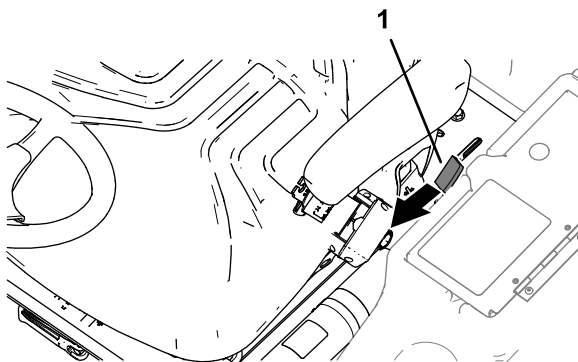


Figure 1

g290373

1. Platform-latch handle

2. Raise the platform (Figure 2).

Note: The gas cylinder assists lifting the platform.

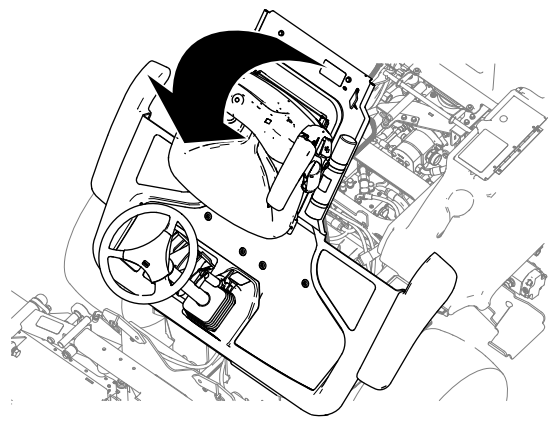


Figure 2

g290372

Removing the Storage Compartment

1. At the left side of the operator's platform, open the door of the storage compartment (Figure 3).

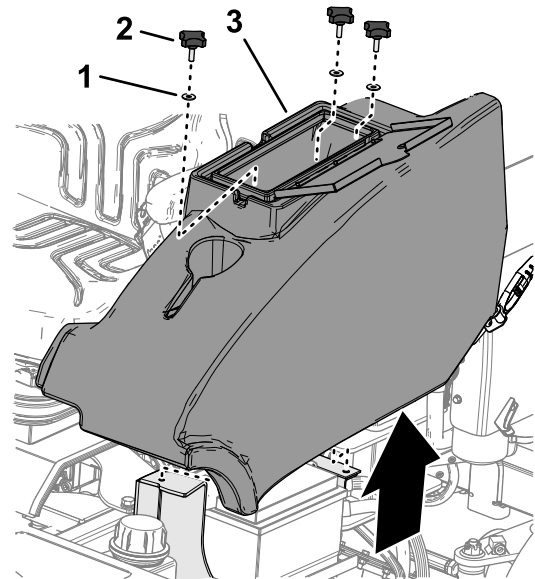


Figure 3

g328513

1. Washer
2. Knob
3. Storage compartment

2. Remove the 3 knobs and 3 washers that secure the storage compartment to the machine, and remove the compartment (Figure 3).

Opening the Hood

Unlatch and open the hood.

Removing the Bulkhead

Remove 4 bolts, 4 lock washers, and 4 washers that secure the bulkhead (Figure 4) to the electrical panel, and remove the bulkhead.

Note: Retain the bulkhead, bolts, lock washers, and washers.

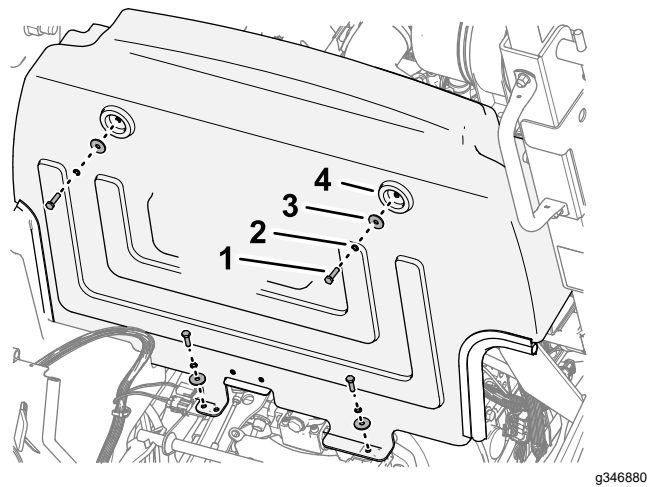


Figure 4

- | | |
|----------------|-------------|
| 1. Bolts | 3. Washer |
| 2. Lock washer | 4. Bulkhead |

2

Installing the Flap Mounts

Parts needed for this procedure:

1	Left flap mount
1	Right flap mount
4	Locknut (16 mm)

Identifying the Flap Mounts

Identify the left and right flap mounts.

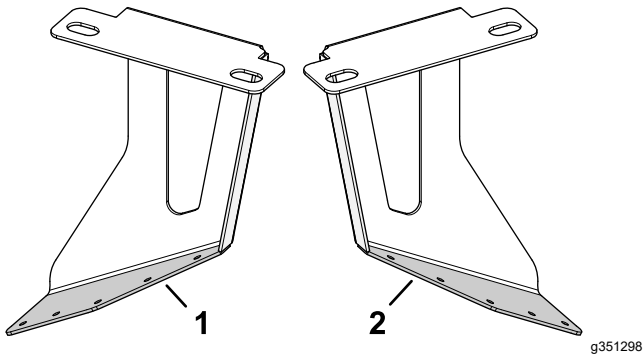


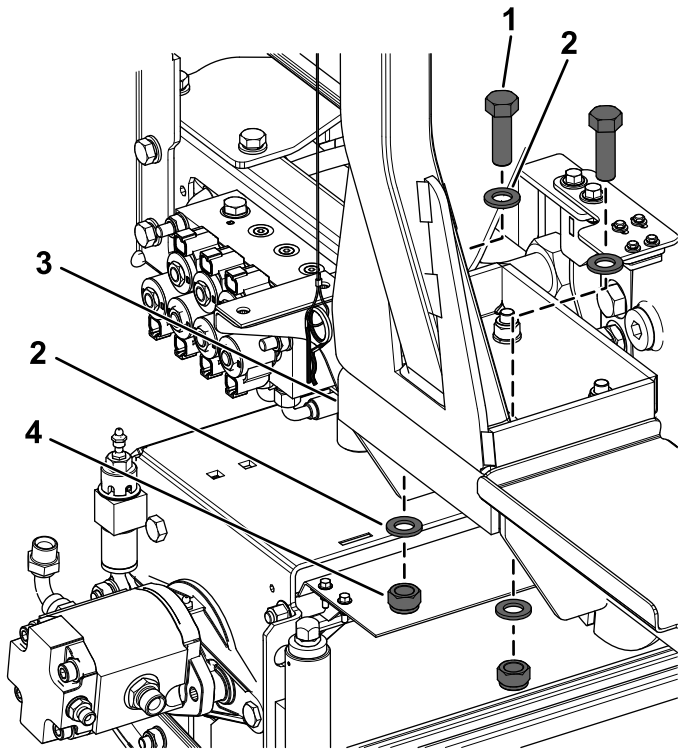
Figure 5

- | | |
|---------------------|--------------------|
| 1. Right flap mount | 2. Left flap mount |
|---------------------|--------------------|

Installing the Flap Mounts

1. Remove the 2 hex-head bolts (16 x 50 mm), 4 washers, and 2 locknuts (16 mm) from the left ROPS bracket ([Figure 6](#)).

Discard the 2 locknuts (16 mm); retain the 2 hex-head bolts (16 x 50 mm) and 4 washers.

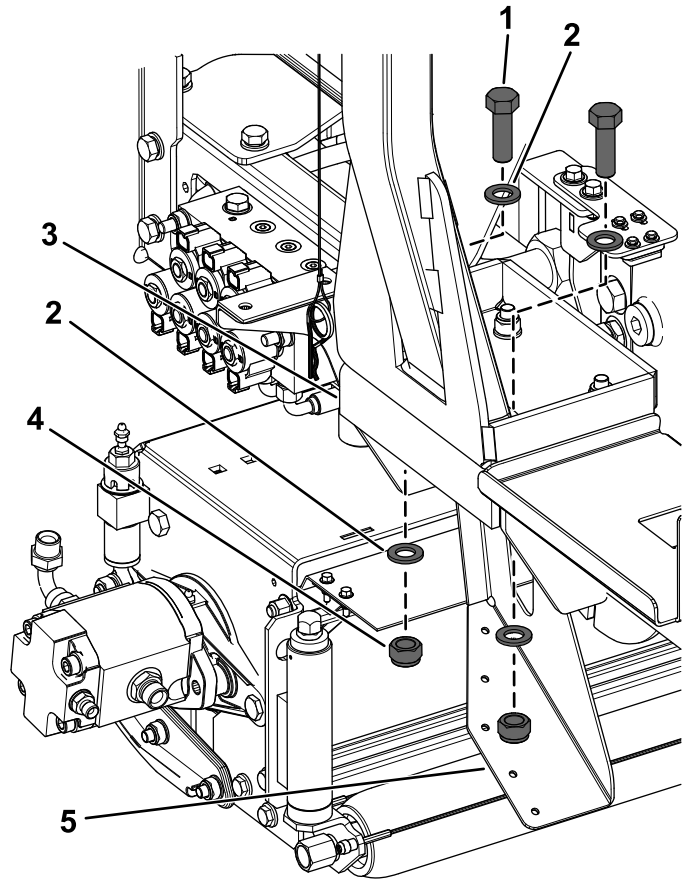


g352160

Figure 6

- | | |
|-------------------------------|----------------------|
| 1. Hex-head bolt (16 x 50 mm) | 3. Left ROPS bracket |
| 2. Washers | 4. Locknut (16 mm) |

2. Loosely secure the left flap mount to the left ROPS bracket using the previously removed 2 hex-head bolts (16 x 50 mm), 4 washers, and 2 new locknuts (16 mm) as shown in [Figure 7](#).



g352159

Figure 7

- | | |
|--|------------------------|
| 1. Previously removed hex-head bolt (16 x 50 mm) | 4. New locknut (16 mm) |
| 2. Previously removed washers | 5. Left flap mount |
| 3. Left ROPS bracket | |

3. Repeat steps [1](#) and [2](#) for the right flap mount.

3

Installing the Wide Deflector

Parts needed for this procedure:

1	Wide deflector
1	Deflector strap
10	Flange-head bolt (6 x 25 mm)
10	Locknut (6 mm)
8	Washer

Procedure

1. Secure the wide deflector to the left and right flap mounts using 8 flange-head bolts (6 x 25 mm), 8 washers, and 8 locknuts (6 mm) as shown in [Figure 8](#).

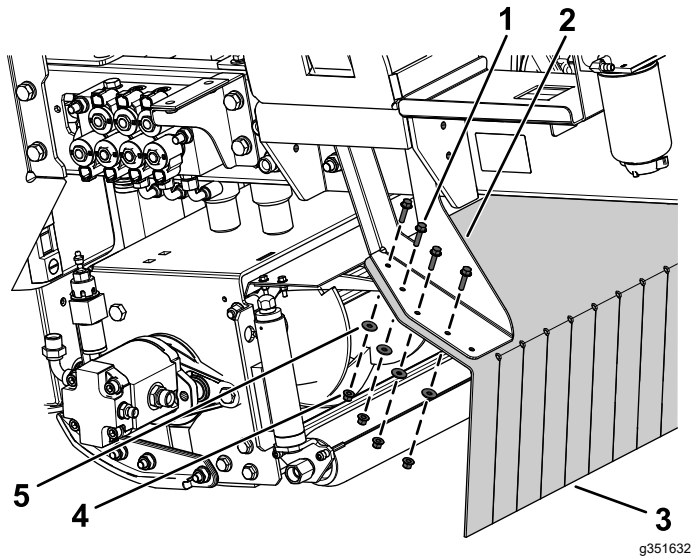


Figure 8

Left side shown

1. Flange-head bolt (6 x 25 mm)
2. Left flap mount
3. Wide deflector
4. Locknut (6 mm)
5. Washer

2. Secure the deflector strap to the wide deflector using 2 flange-head bolts (6 x 25 mm) and 2 locknuts (6 mm) as shown in [Figure 9](#).

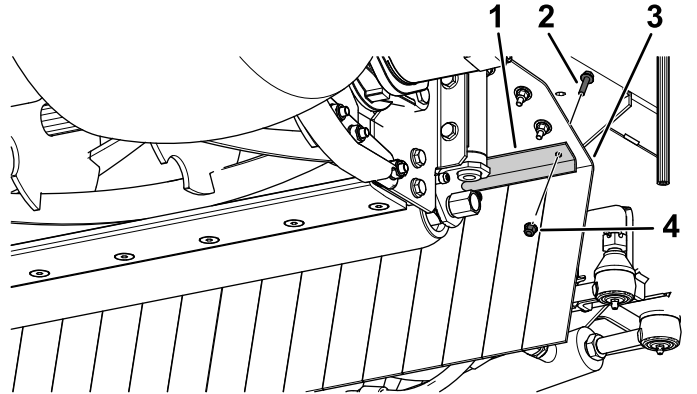


Figure 9

Left side shown

1. Deflector strap
 2. Flange-head bolt (6 x 25 mm)
 3. Wide deflector
 4. Locknut (6 mm)
-
3. Torque the 4 locknuts (16 mm) that secure the flap mounts to the ROPS frame to 200 N·m (148 ft-lb).

4

Completing the Rear Skirt Kit Installation

No Parts Required

Installing the Bulkhead

Assemble the bulkhead to the electrical panel (Figure 10) using the previously removed 4 bolts, 4 lock washers, and 4 washers.

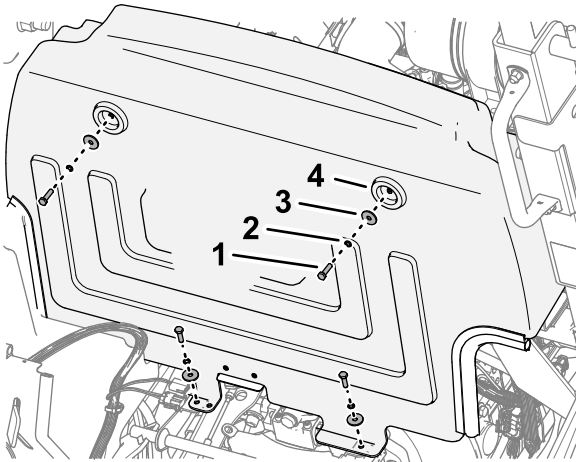


Figure 10

- | | |
|----------------|-------------|
| 1. Bolts | 3. Washer |
| 2. Lock washer | 4. Bulkhead |

Installing the Storage Compartment

1. Align the holes on the bottom of the storage compartment with the holes in the chassis brackets.
2. Assemble the storage compartment to the machine with the 3 knobs and 3 washers (Figure 11).

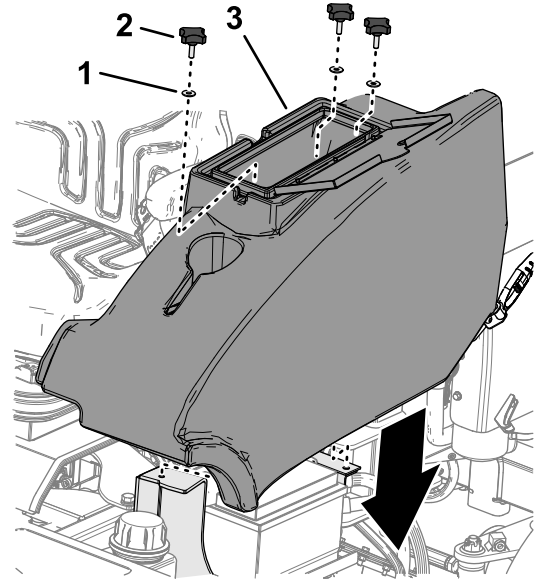


Figure 11

- | | |
|-----------|------------------------|
| 1. Washer | 3. Storage compartment |
| 2. Knob | |
-
3. Close the storage-compartment door.

Closing the Hood

Close and latch the hood.

Lowering the Operator's Platform

⚠ WARNING

Operating the machine with the platform unlatched may cause you to lose control of the machine, resulting in serious injury to you and bystanders.

Never operate the machine without first checking that the operator platform latching mechanism is fully engaged and in good working order.

1. Lower the platform carefully (Figure 12).

Note: The gas cylinder helps support the platform.

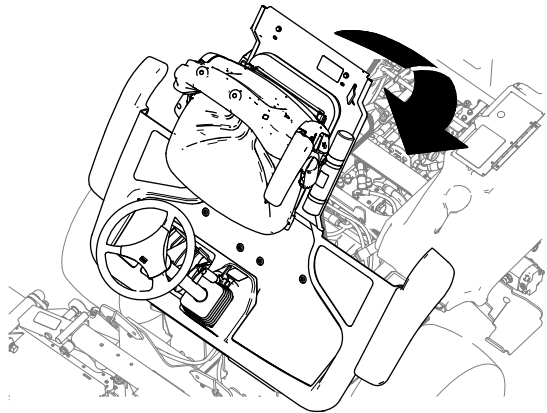


Figure 12

g290371

2. As the platform nears the fully lowered position, move the platform-latch handle (Figure 13) toward the front of the machine.

Note: This ensures that the latch hooks clear the locking bar.

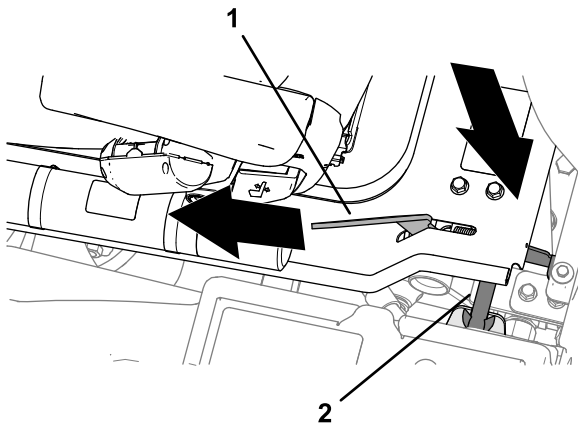


Figure 13

g290369

1. Platform-latch handle
2. Locking bar

3. Fully lower the platform and move the platform-latch handle toward the rear of the machine until the latch hooks fully engage the locking bar (Figure 14).

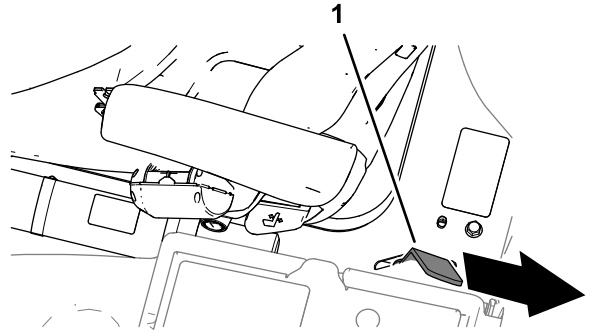


Figure 14

g290370

1. Platform-latch handle



Count on it.