



## 36 inch Tiller Wheel Horse<sup>®</sup> Lawn and Garden Tractor Attachment

Model No. 79271—210000001 and Up

### Parts Catalog

#### Ordering Replacement Parts

To order replacement parts, please supply: the part number, the quantity, and the description of each part desired.

#### Understanding Reference Numbers

Each identified part in an illustration has a reference number. The reference number for a part also appears in the parts list, along with other information about the part.

This catalog uses two special reference number formats, one to indicate parts in a service assembly and another to indicate the quantity of a given part in an illustration.

#### Service Assembly Reference Numbers

Parts in service assemblies have reference numbers in the form **a:b**. The **a** represents the reference number of the entire service assembly and the **b** represents a sequential number unique to each part within the service assembly.

For example, a wheel assembly might be identified by reference number **6**, the tire by **6:1**, the valve by **6:2**, and the wheel by **6:3**. When you order the assembly identified by reference number **6**, you receive all parts identified by reference numbers **6:1**, **6:2**, and **6:3**. However, you may also order any part individually.

Reference numbers of this type appear in illustrations and in part lists.

#### Reference Numbers Indicating Quantity

In an illustration, if a reference number indicates more than one part, the reference number has the form **nX y**. The **n** represents the quantity of the part, the **X** is the multiplication symbol, and the **y** represents the reference number.

For example, in an illustration, the reference number **2X 37** means that two of the parts identified by reference number **37** are indicated.

## Contents

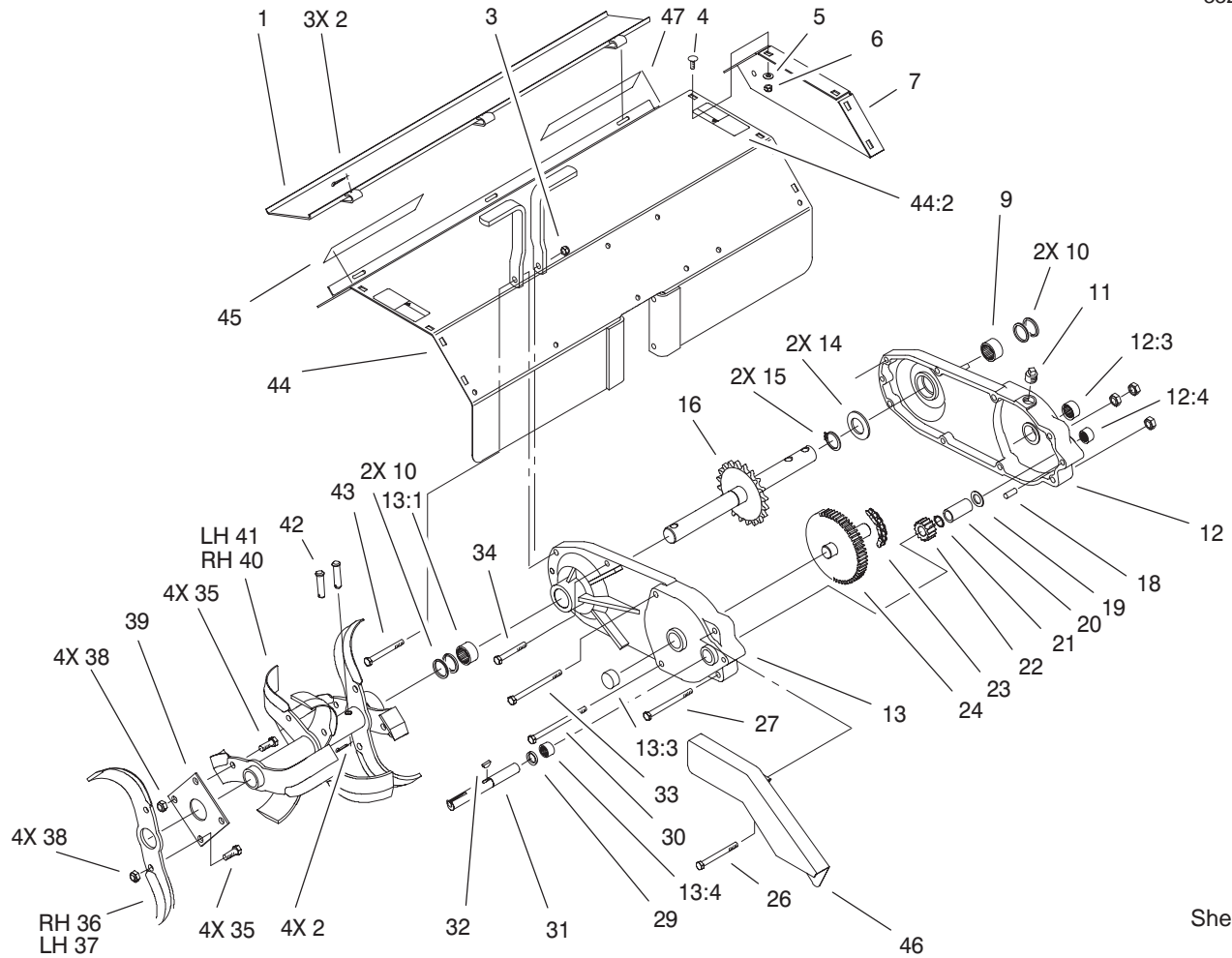
Description	Page	Description	Page
Tiller Gearcase Assembly .....	3-4	Tiller Drive Rack Assembly .....	6
Hitch Assembly .....	5	Rear Mounting Bracket Assembly .....	7

## Part Description Abbreviations

Part descriptions in this catalog may include the following abbreviations.

Abbreviation	Meaning	Abbreviation	Meaning
AR .....	as required	HYD .....	hydraulic
ASM .....	assembly	INC .....	incorporated
CARR .....	carriage	LH .....	left hand
DEG .....	degrees	NI .....	nylon insert
FH .....	flat head	PPH .....	Phillips pan head
GA .....	gauge	PTH .....	Phillips truss head
HF .....	hex flange	PTO .....	power take off
HH .....	hex head	RH .....	right hand
HHF .....	hex head flange	SFH .....	slotted fillister head
HLH .....	hex lag head	SHH .....	slotted hex head
HJ .....	hex jam	SQH .....	square head
HOC .....	height-of-cut	SHWH .....	slotted hex washer head
HS .....	hex socket	SPH .....	slotted pan head
HSBH .....	hex socket button head	SRH .....	slotted round head
HSFH .....	hex socket flat head	STD .....	standard
HSH .....	hex socket head	TAP .....	self tapping
HWH .....	hex washer head	TTH .....	Torx truss head
HWHTF .....	hex washer head thread forming	WH .....	wing head

PROTOTYPE



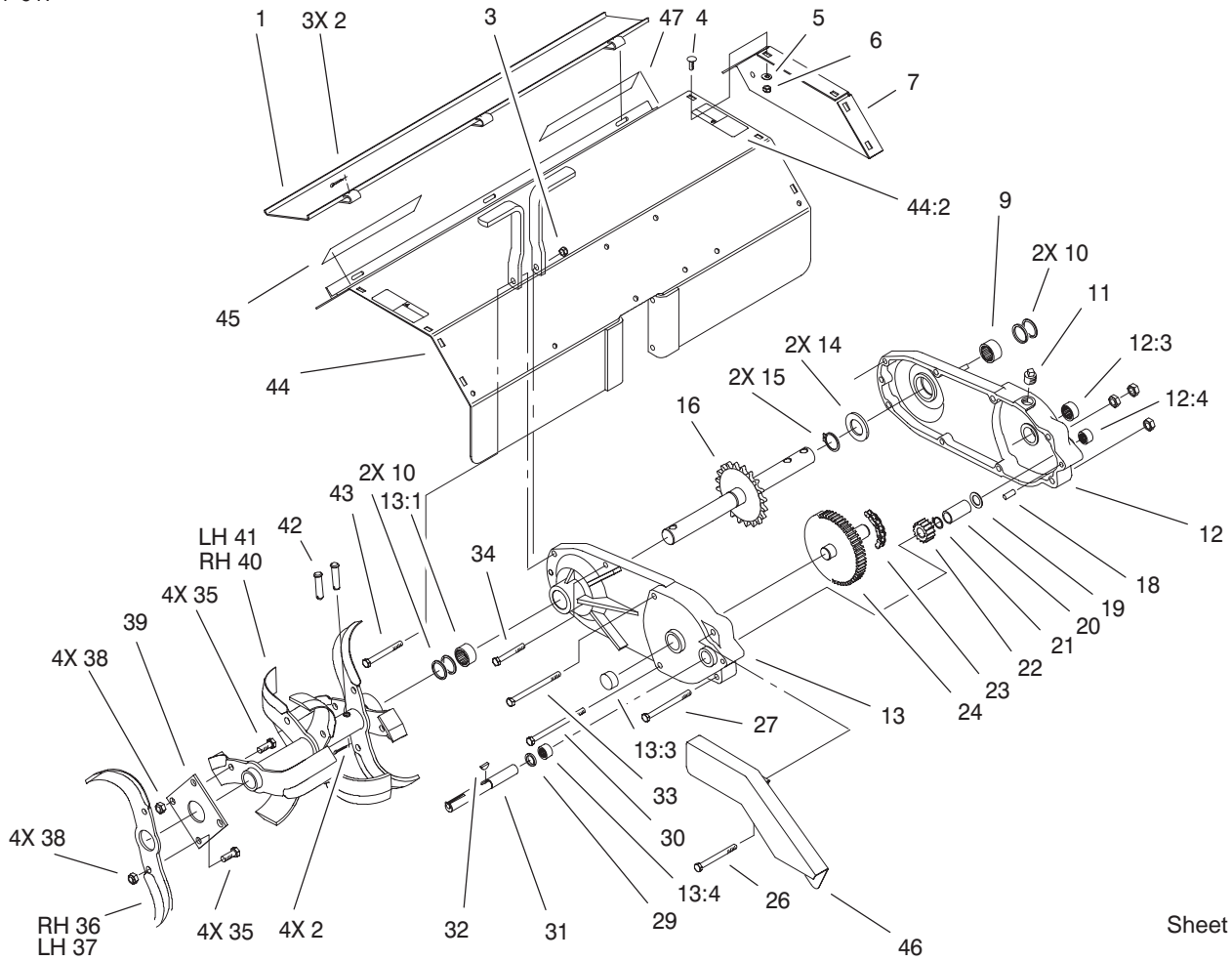
Sheet No.:2

## Tiller Gearcase Assembly

Ref. No.	Part No.	Qty.	Description
1	93-1609-01	1	Guard ASM
2	3272-11	7	Pin-Cotter
3	3296-39	8	Nut-Lock, NI
4	3230-1	12	Screw-CARR
5	3256-23	12	Washer-Flat
6	3296-29	12	Nut-Lock
7	93-1605-01	2	Cover-Tine End
10	103118	4	Seal
11	281-3	2	Plug-Pipe
☆12		1	Gear Case/Bearing ASM-RH
12:1	93-1600-03	1	Gear Case-Tiller
12:2	6838	1	Bearing-Needle
12:3	1532	1	Bearing-Needle
12:4	1540	1	Bearing-Needle
☆13		1	Gear Case/Bearing ASM-LH
13:1	93-1600-03	1	Gear Case-Tiller
13:2	6838	1	Bearing-Needle
13:3	1532	1	Bearing-Needle
13:4	1529	1	Bearing-Needle
14	106011	2	Washer
15	32120-33	2	Ring-Retaining
16	106009	1	Tine Shaft ASM
18	32121-41	2	Pin-Roll
19	1535	1	Washer-Thrust

Ref. No.	Part No.	Qty.	Description
20	83-3340	1	Tube-Spacer
21	32120-72	1	Ring-Snap
22	3528	1	Gear-Pinion
23	6848	1	Chain
24	106007	1	Gear & Shaft ASM
26	323-42	1	Screw-HH
27	323-23	1	Screw-HH
29	100441	1	Seal-Oil
30	323-25	1	Screw-HH
31	104387	1	Shaft-Input
32	3257-5	1	Key-Woodruff
33	323-21	1	Screw-HH
34	323-13	3	Screw-HH
35	324-4	8	Screw-HH
36	92-1653-03	1	Tine-RH
37	93-1604-03	1	Tine-LH
38	3296-48	8	Nut-Lock NI
39	93-1601-03	2	Plate-Tine Mounting
40	93-1602-03	1	RH Tine ASM
41	93-1603-03	1	LH Tine ASM
42	9208	4	Pin-Clevis
43	323-15	1	Screw-HH
44	92-6514	1	Tine Shield/Decal ASM
44:2	92-7112	2	Decal-Danger
45	92-8748	1	Decal-Attachment
46	93-9279-03	1	Guard-Tiller

☆ Not serviced

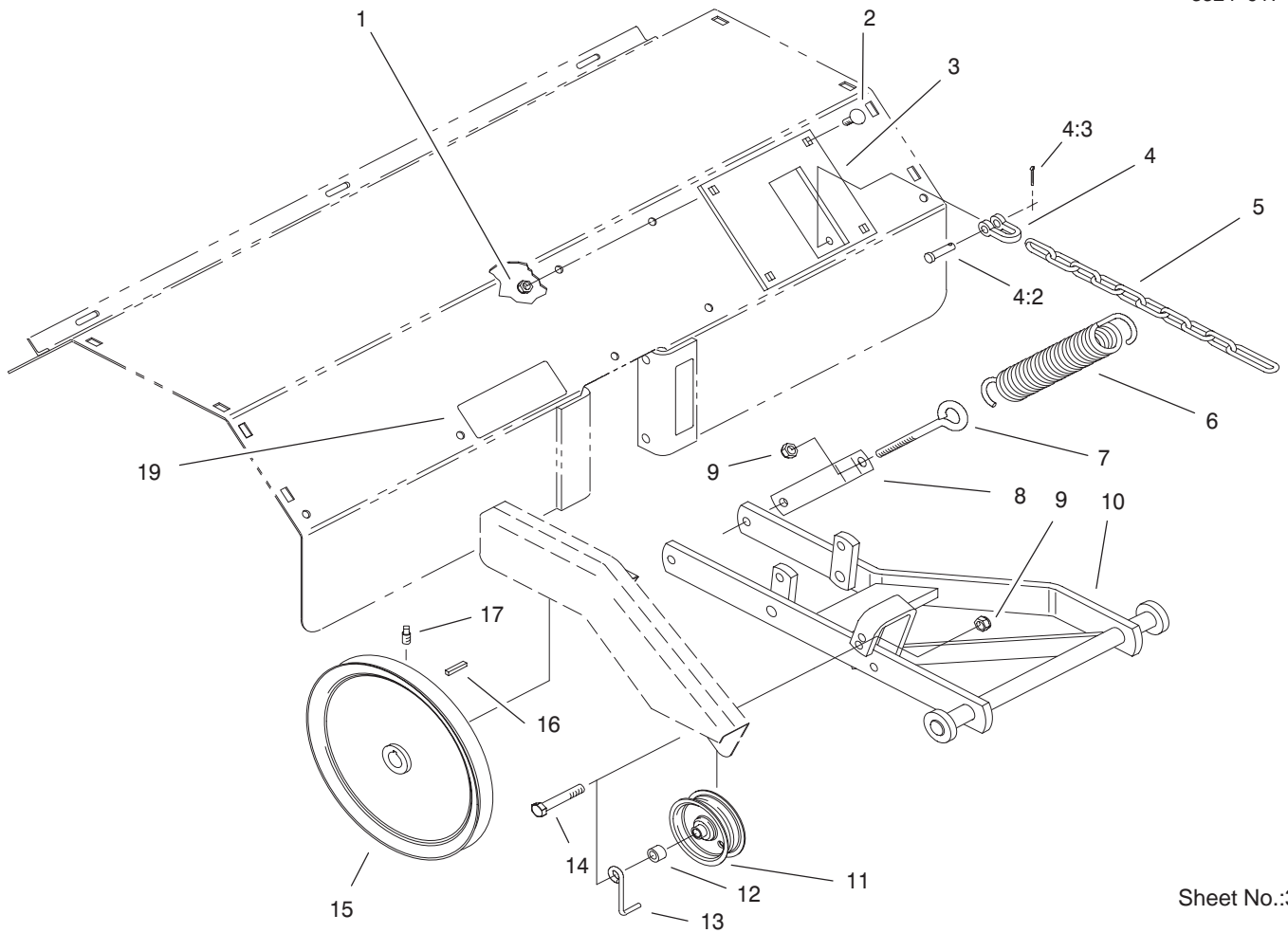


Sheet No.:2

### Tiller Gearcase Assembly (continued)

Ref. No.	Part No.	Qty.	Description
47	94-9158	1	Decal-Workhorse

Ref. No.	Part No.	Qty.	Description
<p style="font-size: 48px; opacity: 0.5; font-family: sans-serif;">PROTOTYPE</p>			



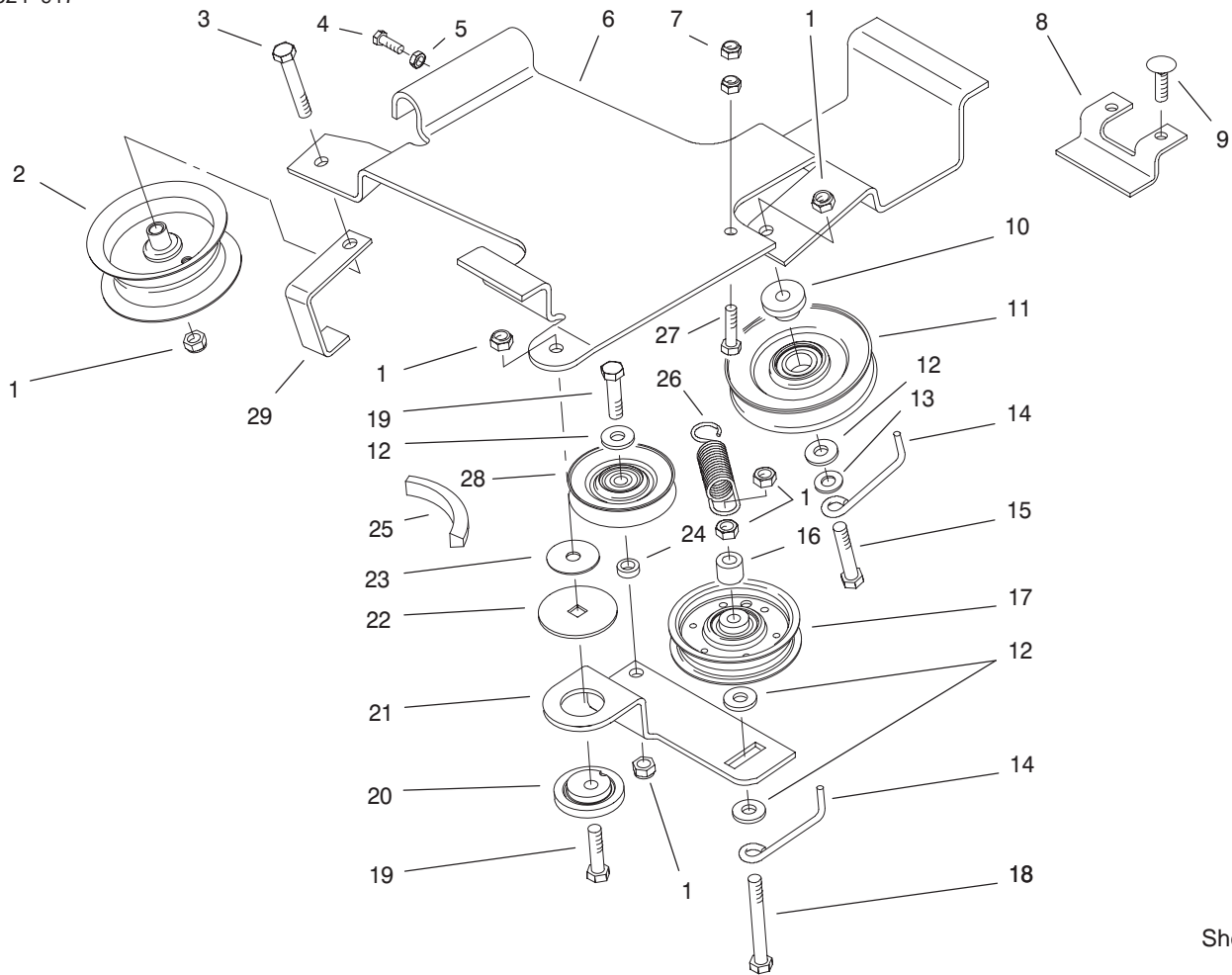
Sheet No.:3

### Hitch Assembly

Ref. No.	Part No.	Qty.	Description
1	3296-29	4	Nut-Lock
2	3230-1	4	Screw-CARR
3	93-1608-01	1	Hitch ASM
4	79-2280	1	Clevis ASM
4:2	105821	1	Pin-Clevis
4:3	3272-6	1	Pin-Cotter
5	92-7074	1	Chain-Lift
6	4629	1	Spring
7	100653	1	Eyebolt
8	93-1606-03	1	Bracket-Spring
9	3296-39	2	Nut-Lock, NI
10	93-1607-03	1	Hitch ASM
11	92-7104	1	Pulley-Idler
12	93-3658	1	Spacer
13	79-0400	1	Guide-Belt
14	323-11	1	Screw-HH
15	93-0345	1	Pulley
16	1005	1	Key-Straight
17	3242-2	2	Screw-SQH
19	93-1628	1	Decal-Belt Routing

Ref. No.	Part No.	Qty.	Description

PROTOTYPE



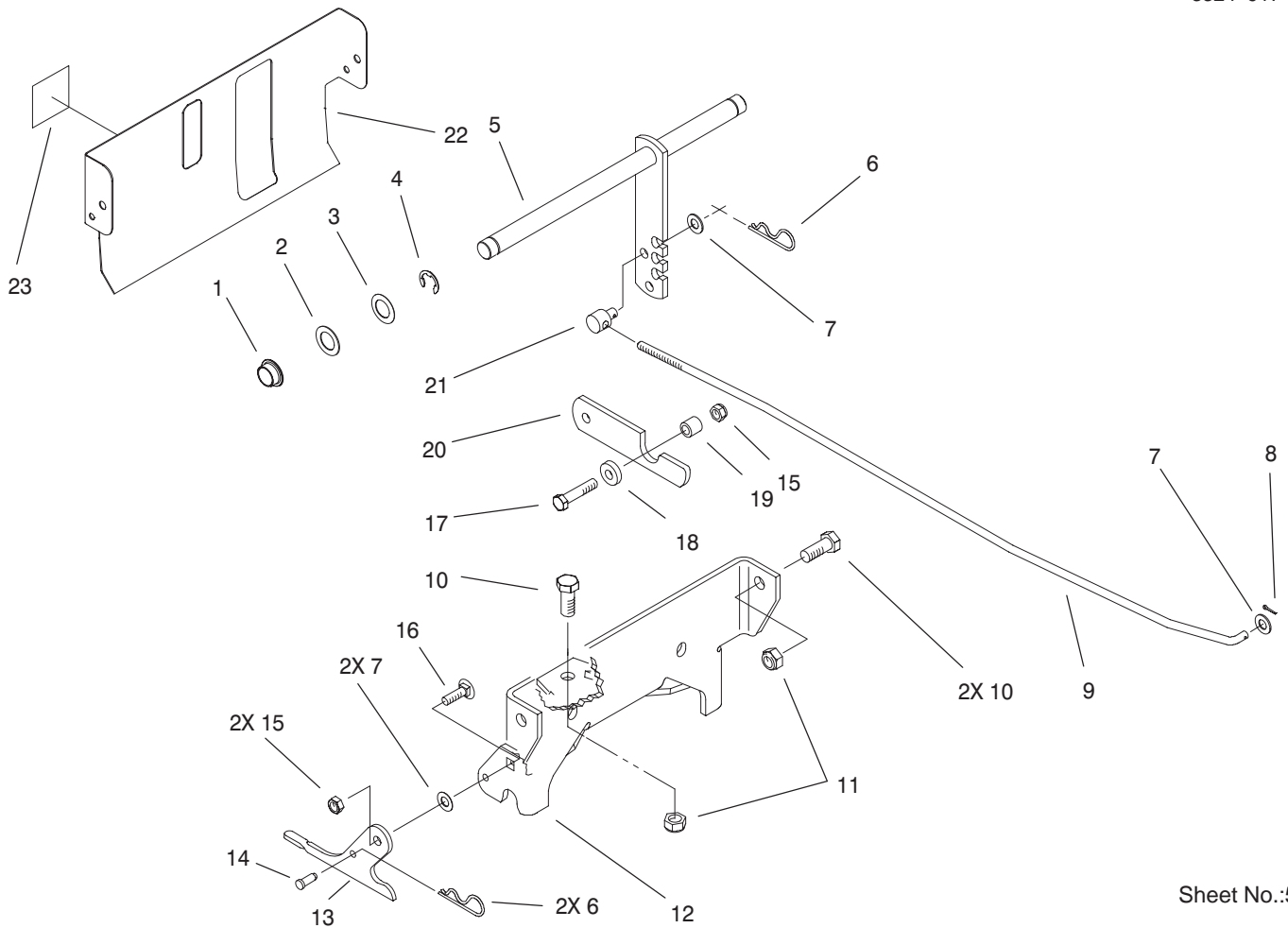
Sheet No.:4

### Tiller Drive Rack Assembly

Ref. No.	Part No.	Qty.	Description
1	3296-39	6	Nut-Lock, NI
2	49-6980	1	Idler
3	323-11	1	Screw-HH
4	3235-20	1	Screw-Hex Hd
5	3218-1	1	Nut-Jam
6	92-7033-03	1	Rack-Tiller Drive
7	3296-29	2	Nut-Lock
8	93-1388-03	2	Bracket - Rack Mounting
9	3230-2	4	Screw-CARR
10	83-2950	1	Spacer
11	92-7103	1	Pulley-Idler
12	9202414	4	Washer-Spacer
13	3256-24	1	Washer-Flat
14	79-0390	2	Guide-Belt
15	323-10	1	Screw-HH
16	108326	1	Spacer-Pivot
17	92-7101	1	Pulley-Flat Idler
18	323-14	1	Screw-HH
19	323-8	2	Screw-HH
20	111418	1	Bushing
21	78-6771	1	Arm-Idler
22	111419	1	Bearing-Washer
23	9202494	1	Washer
24	93-3658	1	Spacer
25	92-7075	1	V-Belt

Ref. No.	Part No.	Qty.	Description
26	92-7149	1	Spring-Extension
27	322-6	1	Screw-HH
28	92-7102	1	Pulley-Idler
29	92-7022-03	1	Guide-Belt

PROTOTYPE



Sheet No.:5

## Rear Mounting Bracket Assembly

Ref. No.	Part No.	Qty.	Description
1	108519	2	Bushing-Bronze
2	1278	2	Washer
3	5210	2	Washer-Shim
4	5618	2	E-Ring
5	92-7064-03	1	Lever ASM
6	9335044	3	Pin-Hair
7	3256-24	4	Washer-Flat
8	3272-6	1	Pin-Cotter
9	92-7069	1	Rod-Lift
10	325-5	3	Screw-HH
11	3296-23	3	Nut-Lock, NI
12	93-1389-03	1	Bracket-Mounting
13	104657	2	Plate-Latching
14	9321204	2	Pin-Clevis
15	3296-39	3	Nut-Lock, NI
16	3231-2	2	Screw-CARR
17	323-9	1	Screw-HH
18	9202204	1	Washer
19	105474	1	Spacer
20	92-7023-03	1	Catch-Spring
21	104524	1	Trunnion-Clutch Rod
22	92-6713-03	1	Cover-Rear
23	92-6727	1	Decal-Fuel Level

Ref. No.	Part No.	Qty.	Description
PROTOTYPE			



*PROTOTYPE*