



## 48" Dozer Blade

### 5XI Garden Tractor

Model No. 79355-21000001 and Up

## Parts Catalog

### Ordering Replacement Parts

To order replacement parts, please supply: the part number, the quantity, and the description of each part desired.

### Understanding Reference Numbers

Each identified part in an illustration has a reference number. The reference number for a part also appears in the parts list, along with other information about the part.

This catalog uses two special reference number formats, one to indicate parts in a service assembly and another to indicate the quantity of a given part in an illustration.

### Service Assembly Reference Numbers

Parts in service assemblies have reference numbers in the form **a:b**. The **a** represents the reference number of the entire service assembly and the **b** represents a sequential number unique to each part within the service assembly.

For example, a wheel assembly might be identified by reference number **6**, the tire by **6:1**, the valve by **6:2**, and the wheel by **6:3**. When you order the assembly identified by reference number **6**, you receive all parts identified by reference numbers **6:1**, **6:2**, and **6:3**. However, you may also order any part individually.

Reference numbers of this type appear in illustrations and in part lists.

### Reference Numbers Indicating Quantity

In an illustration, if a reference number indicates more than one part, the reference number has the form **nX y**. The **n** represents the quantity of the part, the **X** is the multiplication symbol, and the **y** represents the reference number.

For example, in an illustration, the reference number **2X 37** means that two of the parts identified by reference number **37** are indicated.

## Contents

Description	Page	Description	Page
Frame Assembly .....	3		
Blade Assembly .....	4		
Mounting Assembly .....	5		
Maintenance .....	6-7		

## Accessories

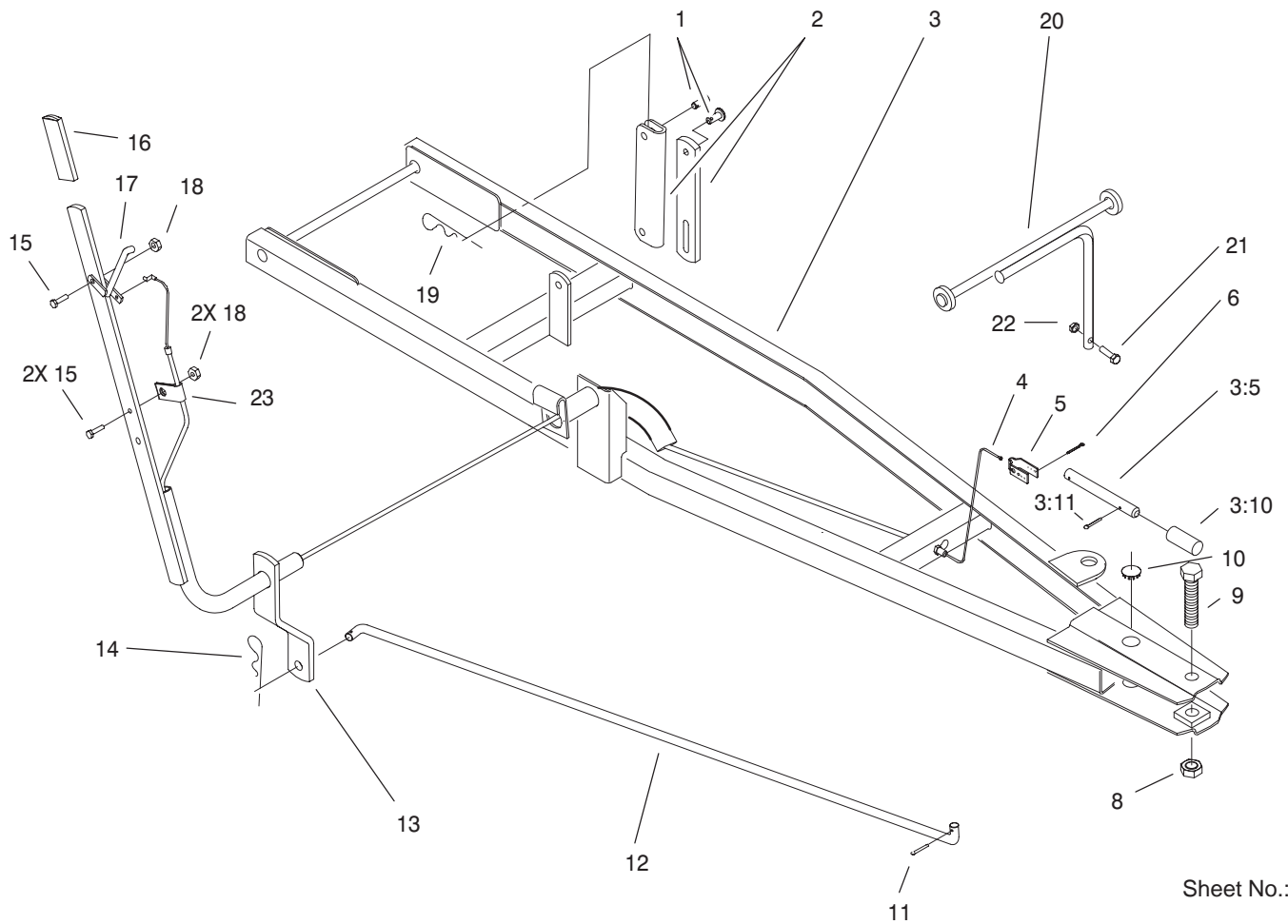
Description	Model / Part No.	Description	Model / Part No.
-------------	------------------	-------------	------------------

## Part Description Abbreviations

Part descriptions in this catalog may include the following abbreviations.

Abbreviation	Meaning	Abbreviation	Meaning
AR .....	as required	INC .....	incorporated
ASM .....	assembly	LH .....	left hand
CARR .....	carriage	NI .....	nylon insert
DEG .....	degrees	PPH .....	Phillips pan head
FH .....	flat head	PTH .....	Phillips truss head
GA .....	gauge	PTO .....	power take off
HF .....	hex flange	RH .....	right hand
HH .....	hex head	SFH .....	slotted fillister head
HHF .....	hex head flange	SHH .....	slotted hex head
HLH .....	hex lag head	SQH .....	square head
HJ .....	hex jam	SHWH .....	slotted hex washer head
HOC .....	height-of-cut	SPH .....	slotted pan head
HS .....	hex socket	SRH .....	slotted round head
HSBH .....	hex socket button head	STD .....	standard
HSFH .....	hex socket flat head	TAP .....	self tapping
HSH .....	hex socket head	TTH .....	Torx truss head
HWH .....	hex washer head	WH .....	wing head
HWHTF .....	hex washer head thread forming		

PROTOTYPE



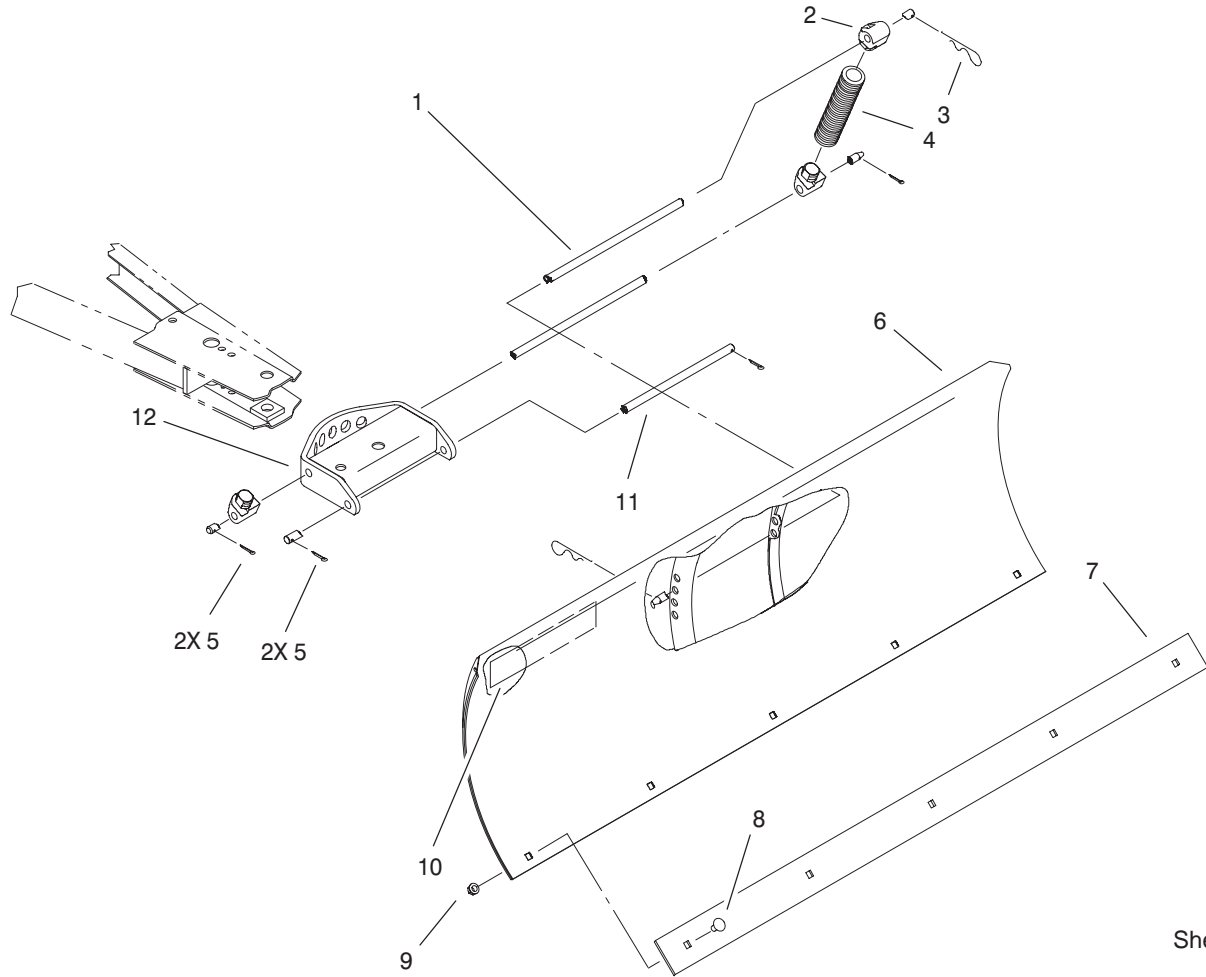
Sheet No.:2

### Frame Assembly

Ref. No.	Part No.	Qty.	Description
1	283-2	2	Pin-Clevis
1	98-5055	2	Pin-Weld
2	94-7987-03	1	Link - Lift
2	94-7793-03	1	Link - Lift
3	104-5023-01	1	Frame
3:5	88-6520	1	Pin-Index
3:10	2354	1	Spring-Compression
3:11	3272-11	1	Pin-Cotter
4	104-2483	1	Cable-Indexing
5	94-7782	1	Bracket - Cable End
6	3272-12	1	Pin-Cotter
8	9156404	1	Nut-Lock
9	3216-7	1	Screw-HH
10	4944	2	Plug
11	3272-11	1	Pin-Cotter
12	94-7787	1	Rod - Blade Control
13	104-5022-01	1	Lever-Indexing
14	9335124	1	Pin-Hair
15	321-6	3	Screw-HH
16	5359	1	Grip
17	98-1743	1	Lever
18	32146-17	3	Nut-Lock
19	9335054	2	Pin-Hair
20	99-9699-03	1	Stabilizer
21	322-6	1	Screw-HH
22	3296-29	1	Nut-Lock

Ref. No.	Part No.	Qty.	Description
23	2412-32	2	R-Clamp-Throttle/Coke

PROTOTYPE



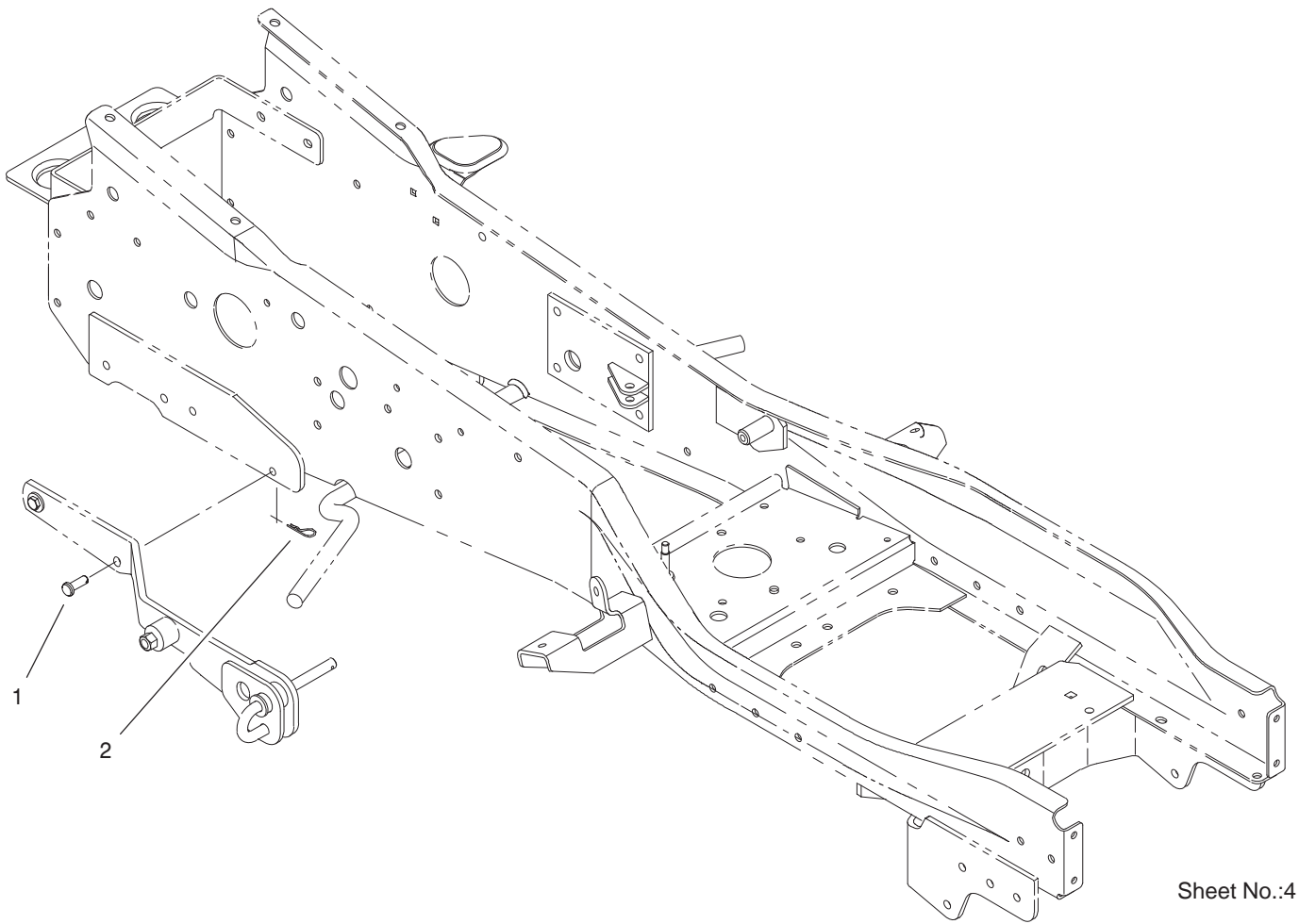
Sheet No.:3

### Blade Assembly

Ref. No.	Part No.	Qty.	Description
1	5120	2	Rod-Blade Pivot
2	88-2080-03	4	Lug-Spring
3	9335124	2	Pin-Hair
4	93-1611-03	2	Spring-Trip Return
5	3272-11	4	Pin-Cotter
6	78-1330-01	1	Blade ASM
7	93-1612-01	1	Plate - Blade Edge
8	3231-1	5	Screw-CARR
9	3296-39	5	Nut-Lock, NI
10	92-8748	1	Decal-Attachment
11	4564	1	Rod-Lower Plated
12	78-8760-01	1	Quadrant

Ref. No.	Part No.	Qty.	Description

PROTOTYPE



Sheet No.:4

### Mounting Assembly

Ref. No.	Part No.	Qty.	Description
1	283-2	2	Pin-Clevis
2	9335044	2	Pin-hair

Ref. No.	Part No.	Qty.	Description

PROTOTYPE







*PROTOTYPE*