



Turf Sweeper 4800GD

Model No. 44044—21000001 and Up

Parts Catalog

Ordering Replacement Parts

To order replacement parts, please supply: the part number, the quantity, and the description of each part desired.

Understanding Reference Numbers

Each identified part in an illustration has a reference number. The reference number for a part also appears in the parts list, along with other information about the part.

This catalog uses two special reference number formats, one to indicate parts in a service assembly and another to indicate the quantity of a given part in an illustration.

Service Assembly Reference Numbers

Parts in service assemblies have reference numbers in the form **a:b**. The **a** represents the reference number of the entire service assembly and the **b** represents a sequential number unique to each part within the service assembly.

For example, a wheel assembly might be identified by reference number **6**, the tire by **6:1**, the valve by **6:2**, and the wheel by **6:3**. When you order the assembly identified by reference number **6**, you receive all parts identified by reference numbers **6:1**, **6:2**, and **6:3**. However, you may also order any part individually.

Reference numbers of this type appear in illustrations and in part lists.

Reference Numbers Indicating Quantity

In an illustration, if a reference number indicates more than one part, the reference number has the form **nX y**. The **n** represents the quantity of the part, the **X** is the multiplication symbol, and the **y** represents the reference number.

For example, in an illustration, the reference number **2X 37** means that two of the parts identified by reference number **37** are indicated.

Contents

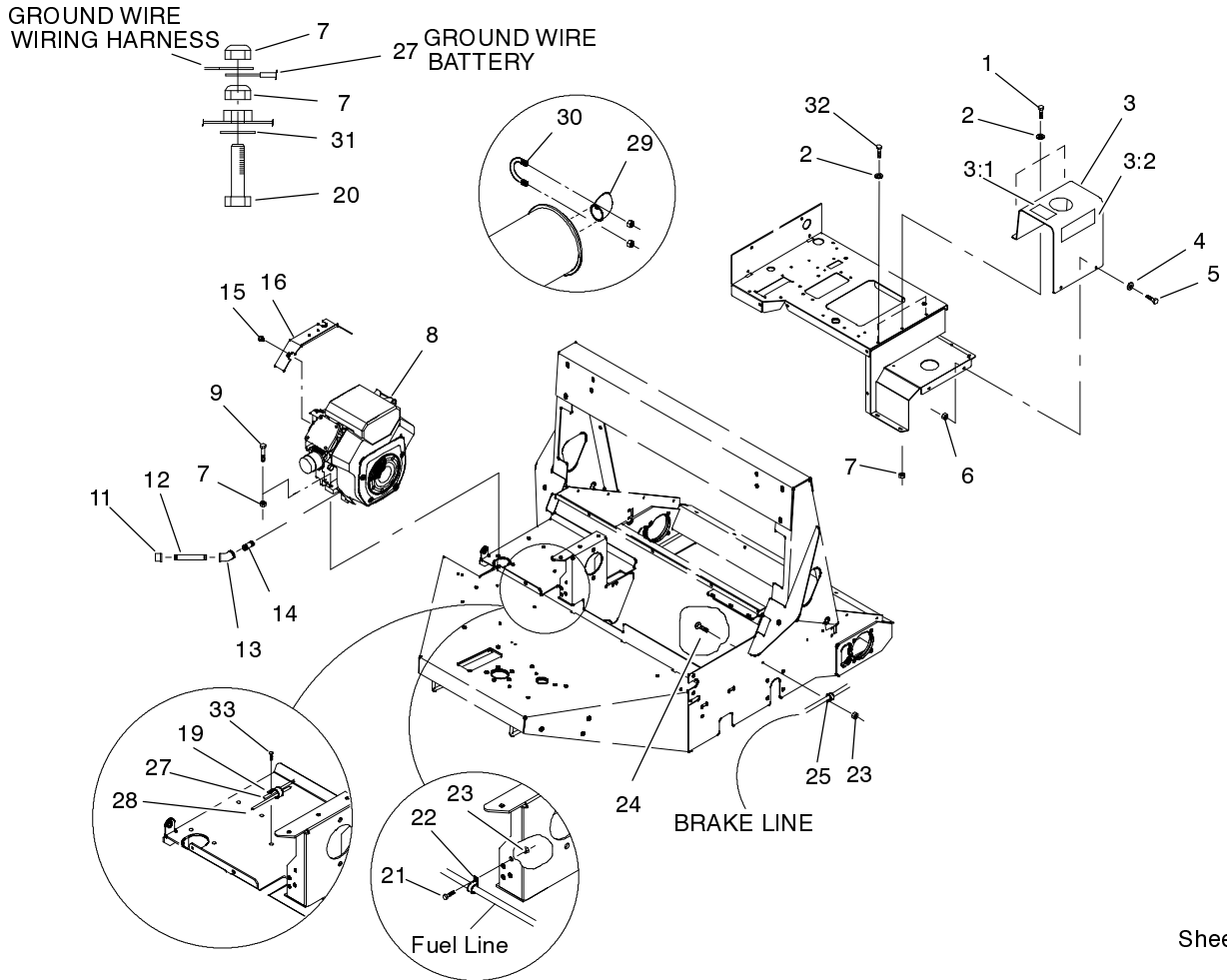
Description	Page	Description	Page
Engine Mounting Assembly	3	Hydraulic Motor Assembly No. 92-9199	16
Reel Assembly	4	Hopper Assembly	17
Drive Shaft - Pump Assembly	5	Hopper Mounting Assembly	18
Belt Drive and Clutch Assembly	6	Door Assembly	19
Electric Clutch Assembly No. 98-5308	7	Door Lift Assembly	20
Reel Lift Assembly	8	Hydraulic Reservoir and Fuel Tank Assembly .	21
Neutral Return System Assembly	9	Pump Assembly	22
Yoke Assembly	10	Tilt Assembly	23
Seat Assembly	11	Traction Control Assembly	24
Control Panel Assembly	12	Hydraulic Tube and Hose Assembly	25
Parking Brake Assembly	13	Main Frame Assembly	26
Wheel and Brake Assembly	14	Main Frame Decal Assembly No. 100-4012 ...	27
Brake Assembly No. 71-1500	15		

Part Description Abbreviations

Part descriptions in this catalog may include the following abbreviations.

Abbreviation	Meaning	Abbreviation	Meaning
AR	as required	HYD	hydraulic
ASM	assembly	INC	incorporated
CARR	carriage	LH	left hand
DEG	degrees	NI	nylon insert
FH	flat head	PPH	Phillips pan head
GA	gauge	PTH	Phillips truss head
HF	hex flange	PTO	power take off
HH	hex head	RH	right hand
HHF	hex head flange	SFH	slotted fillister head
HLH	hex lag head	SHH	slotted hex head
HJ	hex jam	SQH	square head
HOC	height-of-cut	SHWH	slotted hex washer head
HS	hex socket	SPH	slotted pan head
HSBH	hex socket button head	SRH	slotted round head
HSFH	hex socket flat head	STD	standard
HSH	hex socket head	TAP	self tapping
HWH	hex washer head	TTH	Torx truss head
HWHTF	hex washer head thread forming	WH	wing head

PROTOTYPE

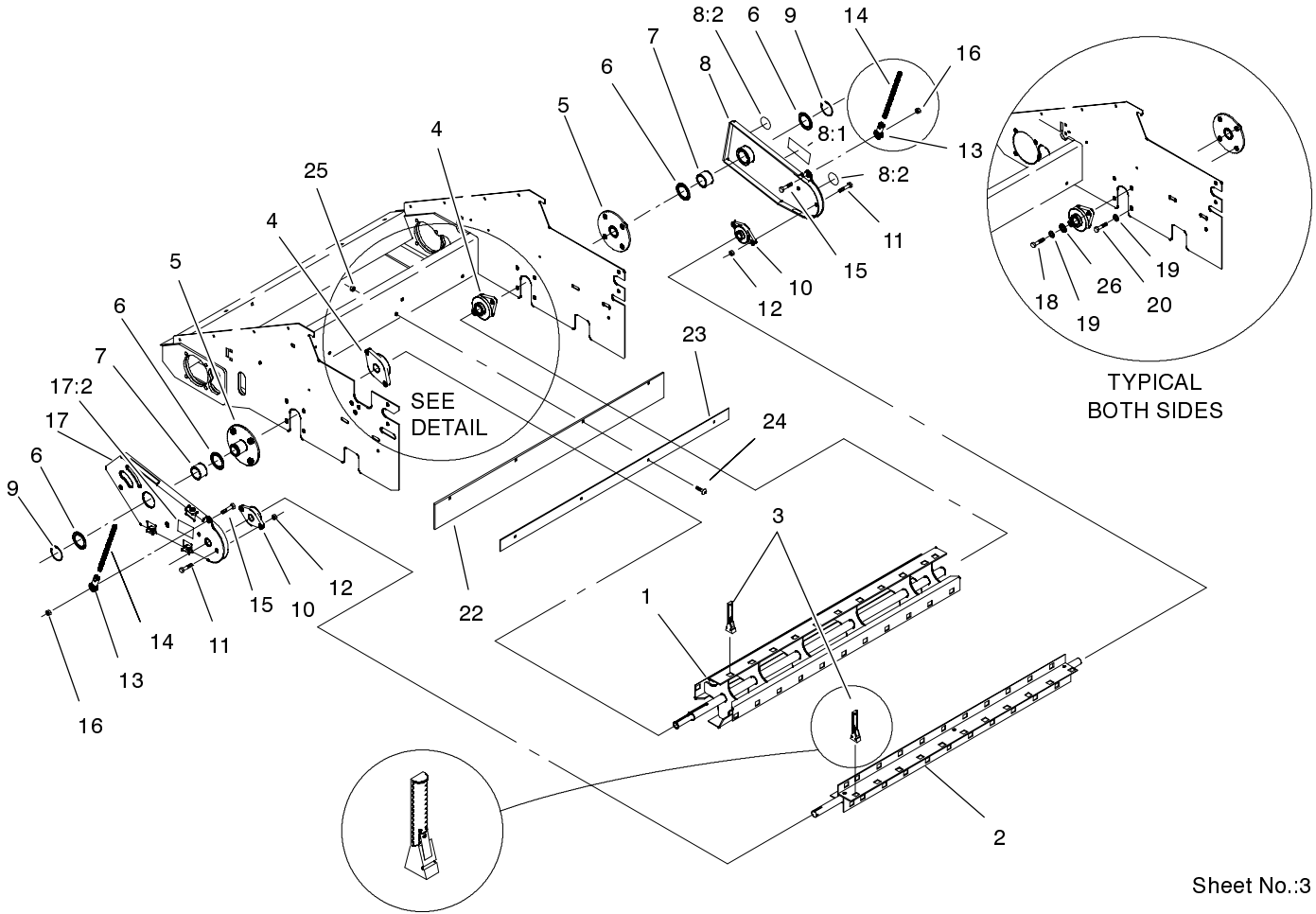


Sheet No.:2

Engine Mounting Assembly

Ref. No.	Part No.	Qty.	Description
1	323-6	2	Screw-HH
2	3256-24	3	Washer-Flat
3	95-4850	1	Cover-Tank, Gas ASM
3:1	27-7310	1	Decal-Refueling
3:2	53-4420	1	Decal-Gas
4	3256-23	2	Washer-Flat
5	322-5	2	Screw-HH
6	3296-29	2	Nut-Lock
7	3296-39	8	Nut-Lock, NI
8	95-4907	1	Engine-Kohler, 18hp
9	323-9	3	Screw-HH
11	288-10	1	Cap-Pipe
12	289-48	1	Nipple
13	95-4824	1	Fitting-Hyd, 45°
14	01-456-0050	1	Nipple-Pipe
15	33103-012	2	Screw-HHF
16	95-4856	1	Engine Heat Guard ASM
19	2412-105	1	Clamp-Tube, Double
20	323-12	1	Screw-HH
21	321-4	1	Screw-HH
22	2412-73	1	Clamp-R
23	3296-42	3	Nut-Lock, NI
24	3229-1	2	Screw-CARR
25	2412-89	2	Clamp

Ref. No.	Part No.	Qty.	Description
27	95-4828	1	Cable-Battery, Neg.
28	95-4827	1	Cable-Battery, Pos.
29	95-4797	1	Exhaust-Outlet, 90°
30	2112-11	1	Clamp-Muffler
31	3255-9	1	Washer-Lock/Ext
32	323-4	1	Screw-HH
33	32144-14	1	Screw-HWH



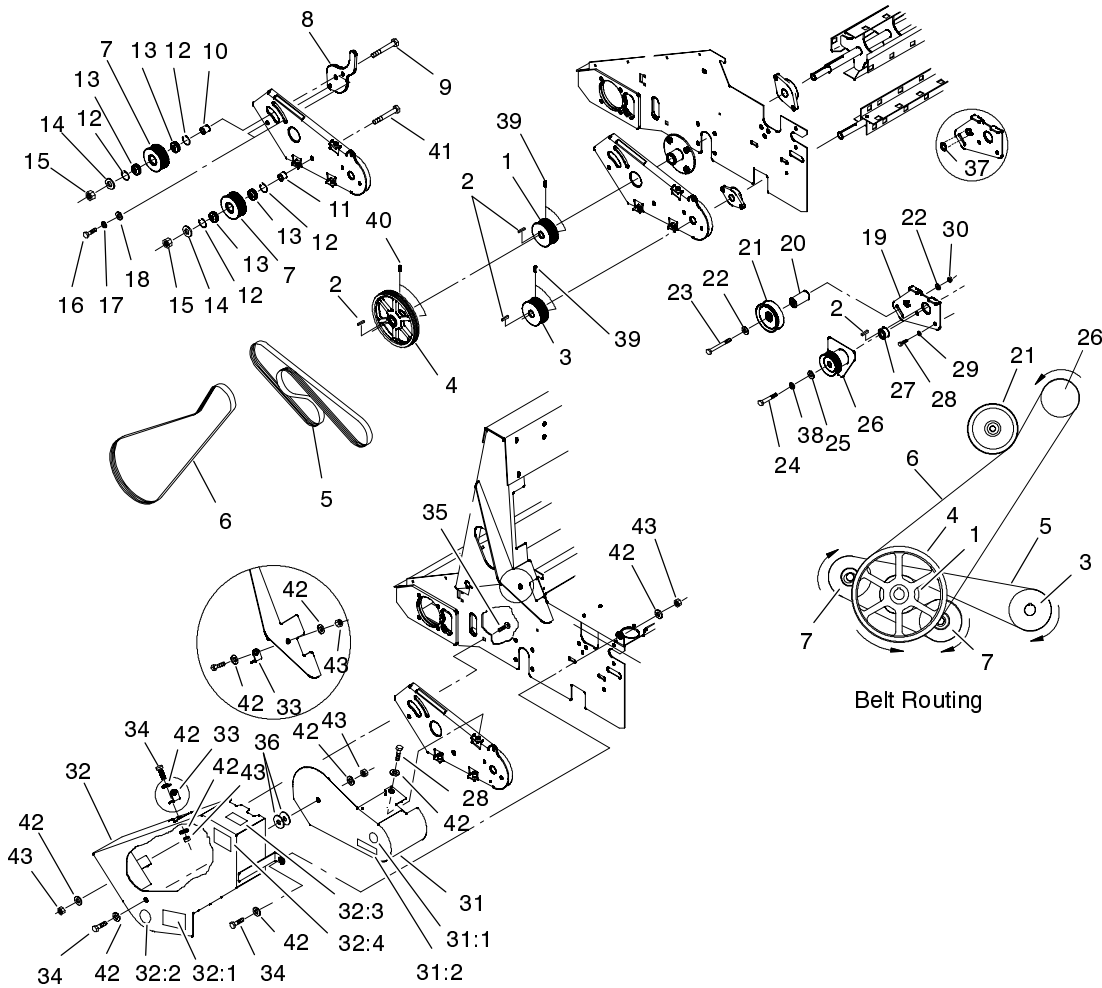
Sheet No.:3

Reel Assembly

Ref. No.	Part No.	Qty.	Description
1	95-4936-03	1	Reel-Rear
2	95-4934-03	1	Reel-Front
3	01-279-0010	88	Finger-Rubber
4	98-8873	2	Bearing-Flange
5	95-4913-03	2	Spindle-Reel
6	01-168-2810	4	Bushing-Narrow
7	98-8856	2	Bushing-Oilight
8	98-8883	1	LH Reel Plate ASM
8:1	01-506-0080	1	Decal-Keep Hands & Feet
8:2	58-6520	2	Decal-Grease
9	98-8858	2	Ring-Retaining
10	98-8872	2	Bearing-Flange
11	324-5	4	Screw-HH
12	3296-48	4	Nut-Lock NI
13	2411-44	2	End-Rod
14	95-4822	2	All Thread
15	325-6	2	Screw-HH
16	3296-23	2	Nut-Lock, NI
17	98-8882	1	RH Reel Plate ASM
17:2	88-8950	1	Decal-Warning
18	324-7	4	Screw-HH
19	3253-6	8	Washer-Lock/Sp
20	324-4	4	Screw-HH
22	98-8878	1	Deflector - Rubber
23	98-8879-01	1	Plate-Backing

Ref. No.	Part No.	Qty.	Description
24	3230-2	4	Screw-CARR
25	3296-29	4	Nut-Lock
26	3256-25	4	Washer-Flat

PROTOTYPE

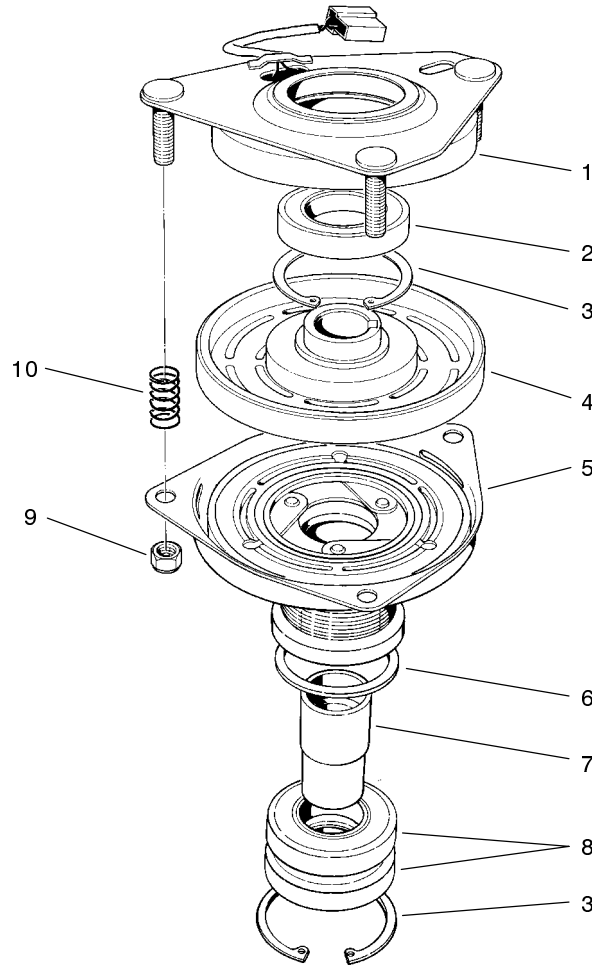


Sheet No.:5

Belt Drive and Clutch Assembly

Ref. No.	Part No.	Qty.	Description
1	98-8853	1	Pulley-Goodyear
2	7-0238	4	Key-Square
3	98-8851	1	Pulley
4	98-5351	1	Pulley
5	98-8867	1	Belt-Poly
6	98-8868	1	Belt-Poly
7	98-8852	2	Pulley-Idler
8	98-8850-03	1	Plate-Adjustment Arm
9	327-16	1	Screw-HH
10	98-8863	1	Spacer
11	98-8862	1	Spacer
12	98-8859	4	Ring-Retaining, Int.
13	98-8854	4	Bearing
14	3256-27	2	Washer-Flat
15	3296-53	2	Nut-Lock, NI
16	325-4	2	Screw-HH
17	3253-7	2	Washer-Lock
18	3256-6	2	Washer-Flat
19	95-4912-03	1	Bracket-Clutch
20	98-8861	1	Spacer
21	01-268-0370	1	Pulley
22	3256-26	2	Washer-Flat
23	325-19	1	Screw-HH
24	3212-11	1	Screw-HH
25	70-8040	1	Washer
26	98-5308	1	Electric Clutch ASM

Ref. No.	Part No.	Qty.	Description
27	98-8860	1	Spacer
28	323-6	7	Screw-HH
29	3253-5	4	Washer-Lock
30	3296-23	1	Nut-Lock, NI
31	98-8884	1	Lower Guard ASM
31:1	58-6520	1	Decal-Grease
31:2	67-5360	1	Decal-Danger
32	98-8881	1	Upper Guard ASM
32:1	01-506-0080	1	Decal-Keep Hands & Feet
32:2	58-6520	1	Decal-Grease
32:3	67-5360	1	Decal-Danger
32:5	98-8880	1	Decal-Belt Routing
33	98-8855-03	1	Bracket-Upper Guard
34	323-7	4	Screw-HH
35	3231-28	1	Screw-CARR
36	95-4896	2	Washer-Nylon
37	98-8529	1	Grommet
38	3253-6	1	Washer-Lock/Sp
39	01-163-0030	4	Setscrew-Hollow
40	3246-3	2	Screw-HS
41	327-14	1	Screw-HH
42	3256-24	12	Washer-Flat
43	3296-39	5	Nut-Lock, NI

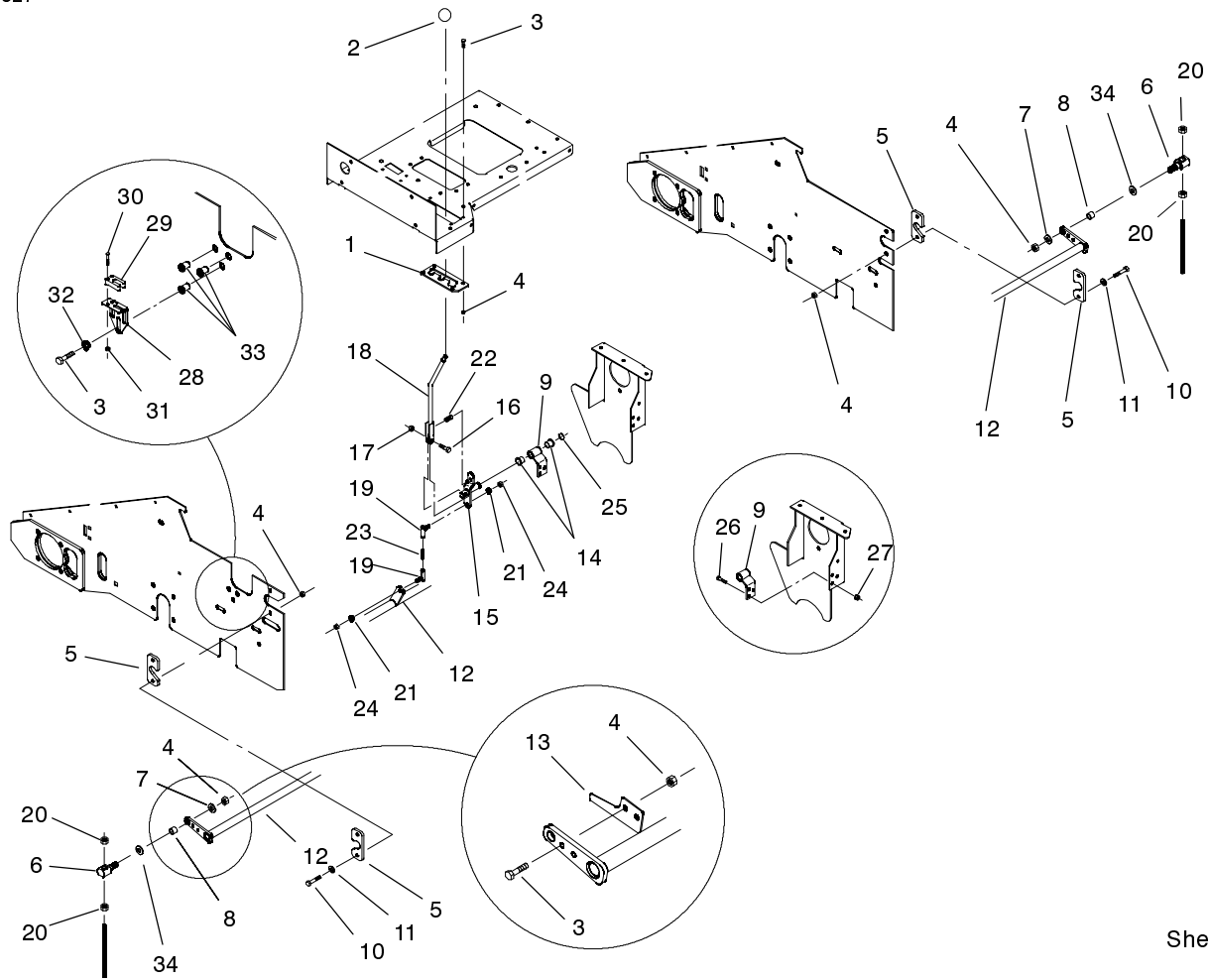


Sheet No.:A1

T-3746

Electric Clutch Assembly No. 98-5308

Ref. No.	Part No.	Qty.	Description	Ref. No.	Part No.	Qty.	Description
1	44-8350	1	Field Bearing ASM				
2	251-292	1	Bearing-Field				
3	44-8310	2	Ring-Retaining				
4	44-8360	1	Field Coil-Rotor / Bearing ASM				
5	98-5333	1	Armature & Pulley ASM				
6	44-8330	1	Spacer-Pulley Bearing				
7	98-5334	1	Collar-Bearing, Clutch				
8	251-291	1	Bearing-Pulley				
9	3296-6	3	Nut-Lock, NI				
10	44-8320	3	Spring				



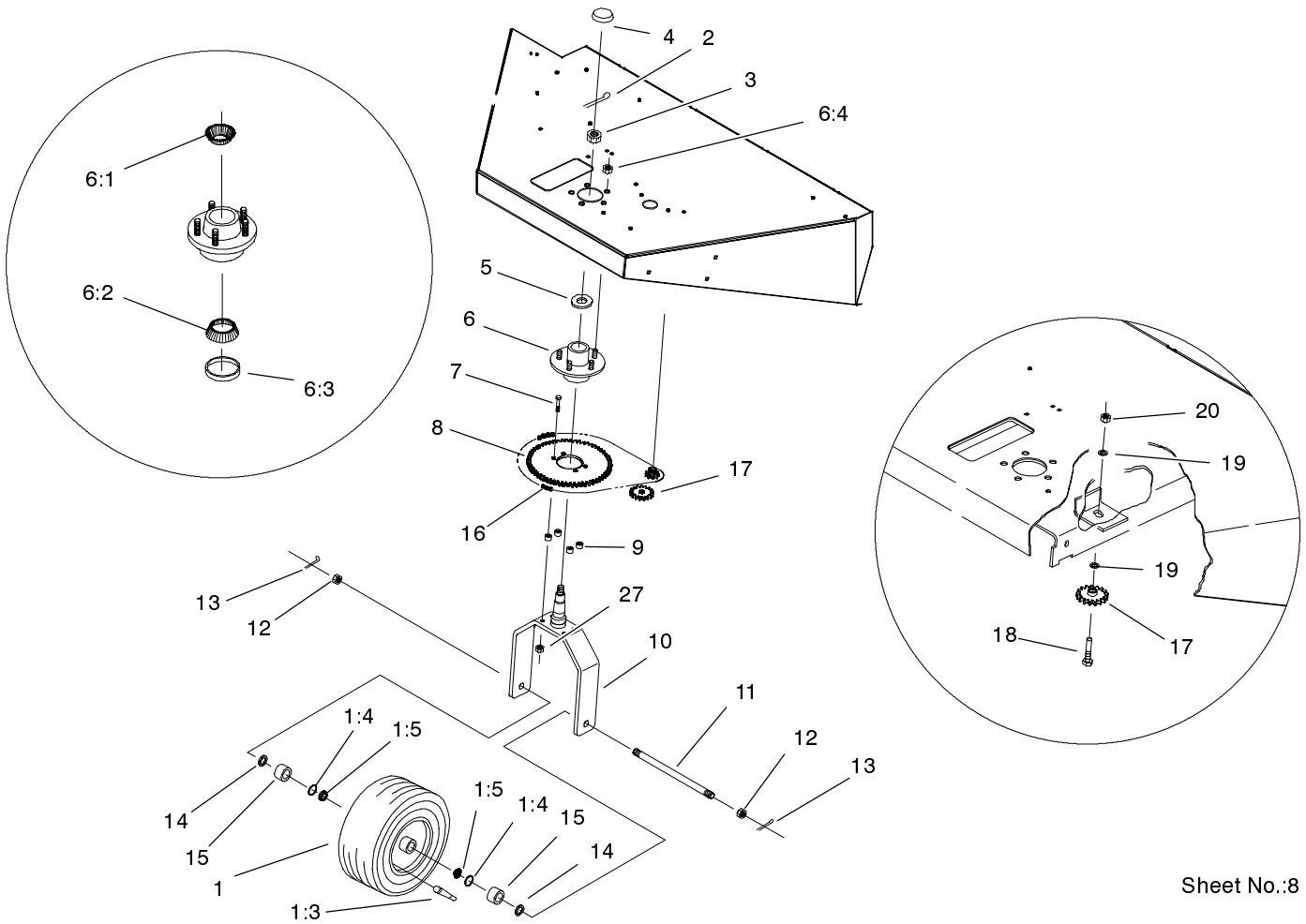
Sheet No.:6

Reel Lift Assembly

Ref. No.	Part No.	Qty.	Description
1	98-8864	1	Gate-Reel
2	233-48	1	Knob
3	323-6	9	Screw-HH
4	3296-39	12	Nut-Lock, NI
5	95-0272	4	Bushing
6	92-2344	2	Trunnion
7	3256-4	2	Washer-Flat
8	95-4782	2	Bushing
9	95-4888-03	1	Bracket-Lift, Reel
10	323-8	4	Screw-HH
11	3256-24	4	Washer-Flat
12	95-0179-03	1	Rod-Lift, Reel
13	98-8865-03	1	Plate-Switch
14	256-10	2	Bushing-Flange
15	95-4891	1	Pivot-Lift, Reel
16	325-5	1	Screw-HH
17	3296-45	1	Nut-Lock, NI
18	95-4702	1	Handle-Lift, Reel
19	01-250-0040	2	Ball Joint ASM
20	3219-5	4	Nut-Hex
21	3253-5	2	Washer-Lock
22	01-261-0330	1	Spring Danly Blue
23	01-650-1100	1	All Thread
24	3220-3	2	Nut-Jam
25	95-4893	1	Ring-Retaining, Ext
26	322-5	3	Screw-HH

Ref. No.	Part No.	Qty.	Description
27	3296-29	3	Nut-Lock
28	98-8866	1	Bracket-Switch
29	98-4132	1	Switch-Reed
30	32105-29	2	Screw-SHWH
31	3296-54	2	Nut-Lock NI
32	3253-21	3	Washer-Lock
33	32148-9	3	Nut-Insert
34	3256-26	3	Washer-Flat

PROTOTYPE



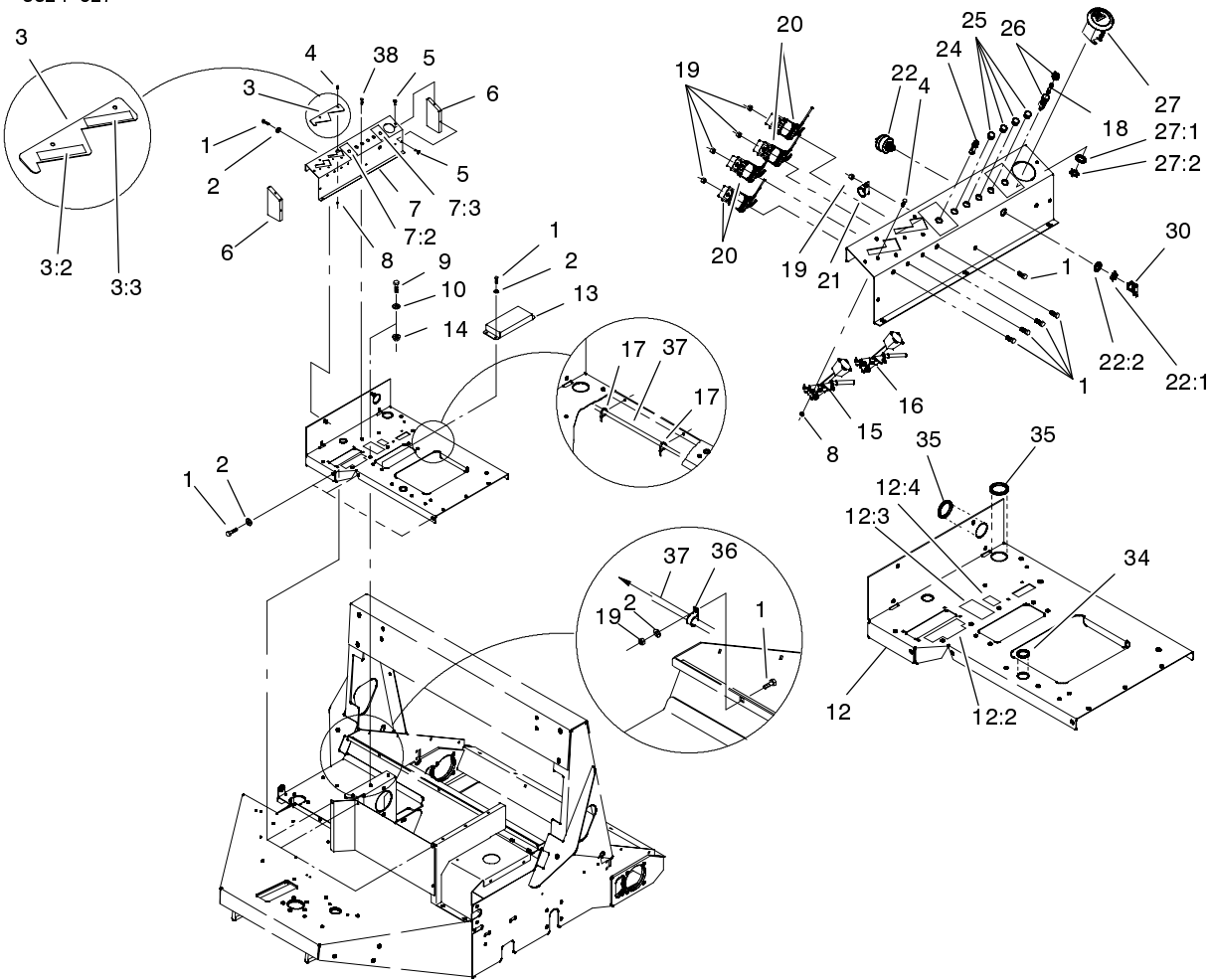
Sheet No.:8

Yoke Assembly

Ref. No.	Part No.	Qty.	Description
1	01-269-1820	1	Front Tire & Wheel ASM
1:3	232-24	1	Stem-Valve
1:4	01-405-0460	2	Seal-Grease
1:5	254-78	2	Bearing-Cone
2	3272-15	1	Pin-Cotter
3	01-190-1216	1	Nut-Slotted
4	01-286-0040	1	Cap-Grease
5	3256-28	1	Washer-Flat
6	01-269-0140	1	Hub-Steering Complete
6:1	01-102-0070	1	Bearing
6:2	01-102-0050	1	Bearing
6:3	01-405-0370	1	Seal-Oil
6:4	242-50	5	Nut-Lug
7	323-10	4	Screw-HH
8	95-4729	1	Sprocket-Steering
9	98-8895	4	Spacer
10	95-0008-03	1	Wheel-Yoke
11	95-0225	1	Axle-Front
12	01-190-1210	2	Nut-Slotted
13	3272-19	2	Pin-Cotter
14	01-168-1210	2	Bushing
15	01-269-0060	2	Spacer-Axle
16	95-4796	1	Chain-Steering
17	01-262-0290	1	Sprocket

Ref. No.	Part No.	Qty.	Description
18	327-6	1	Screw-HH
19	3256-27	2	Washer-Flat
20	3296-53	1	Nut-Lock, NI
27	3296-39	4	Nut-Lock, NI

PROTOTYPE

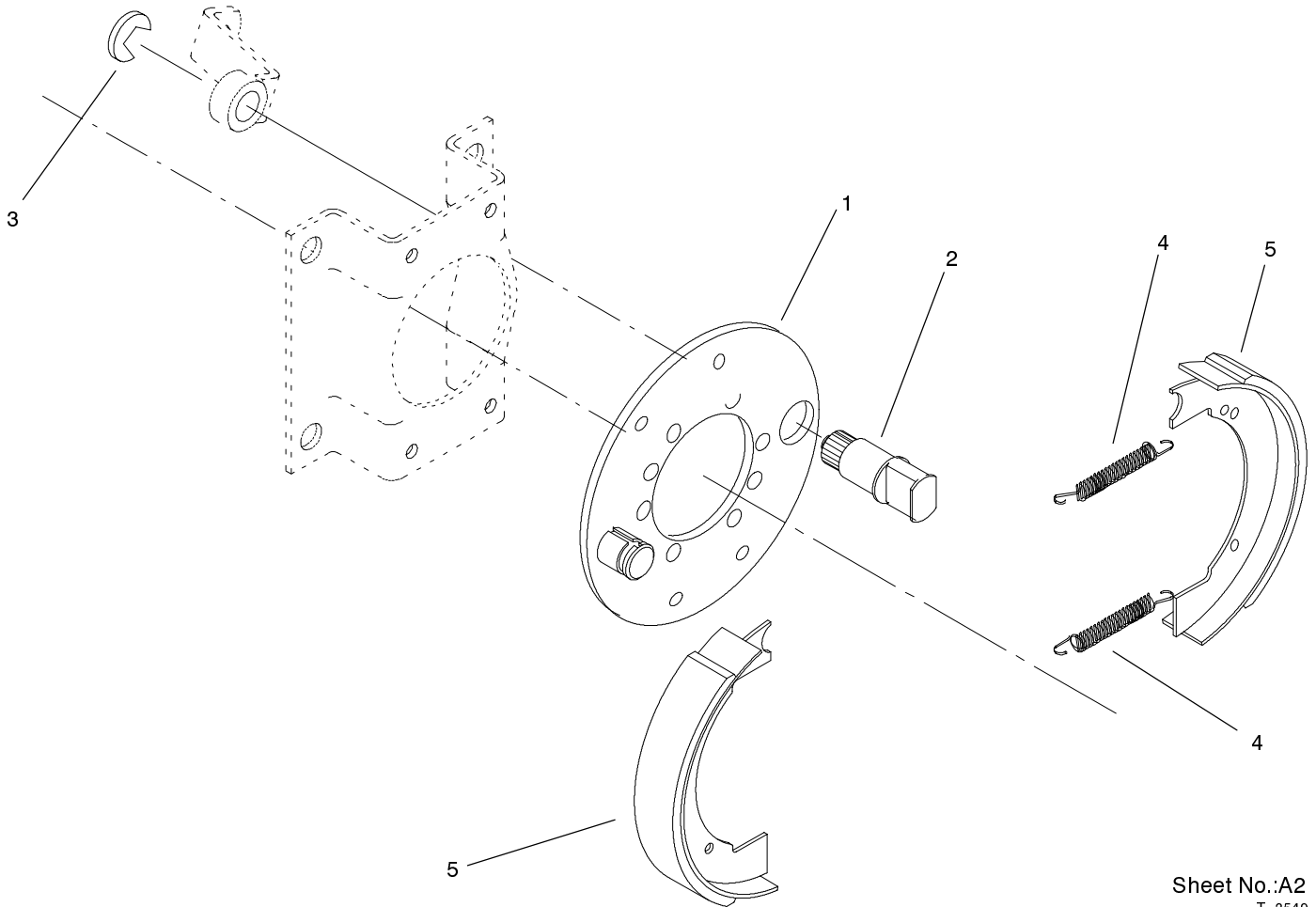


Sheet No.:10

Control Panel Assembly

Ref. No.	Part No.	Qty.	Description
1	321-4	15	Screw-HH
2	3256-22	7	Washer-Flat
3	100-4010	1	Cover Plate ASM
3:2	95-0370	1	Decal-Throttle
3:3	95-0371	1	Decal-Choke
4	3290-134	6	Screw
5	3269-4	4	Rivet-Pop
6	95-0186-03	2	Cap-Control Panel, Front
7	100-4009	1	Control Panel ASM
7:2	95-0383	1	Decal-Oil Light
7:3	95-0384	1	Decal-Fuse
8	3296-2	6	Nut-Lock
9	323-6	3	Screw-HH
10	3256-24	3	Washer-Flat
12	100-4008	1	Access Cover ASM
12:2	95-0390	1	Decal-Operation, Reels
12:3	87-6020	1	Decal-Brake, Parking
12:4	95-0389	1	Decal-Operation, Starting
13	95-0329-03	1	Cover-Top
14	32128-43	4	Nut-Flange
15	95-4816	1	Control-Throttle
16	95-0286	1	Cable-Control
17	3290-410	2	Tie-Push Mount

Ref. No.	Part No.	Qty.	Description
18	98-8876	1	Fuse-10 Amp
19	3296-42	6	Nut-Lock, NI
20	70-1480	4	Relay
21	2412-73	1	Clamp-R
22	27-2360	1	Switch-Key
22:1	218-446	1	Nut-Hex
22:2	218-447	1	Washer-Lock
24	87-8580	1	Light-Indicator
25	95-4765	4	Plug-Hole
26	218-489	1	Holder-Fuse
27	66-2950	1	Gauge-Hourmeter
27:1	3255-20	2	Washer-Lock
27:2	3217-25	2	Nut-Hex
30	63-8360	1	Key-Ignition
34	240-5	1	Grommet
35	240-7	2	Grommet-Rubber
36	2412-39	1	R-Clamp
37	98-8874	1	Harness-Wire
38	87-6620	3	Screw-Special



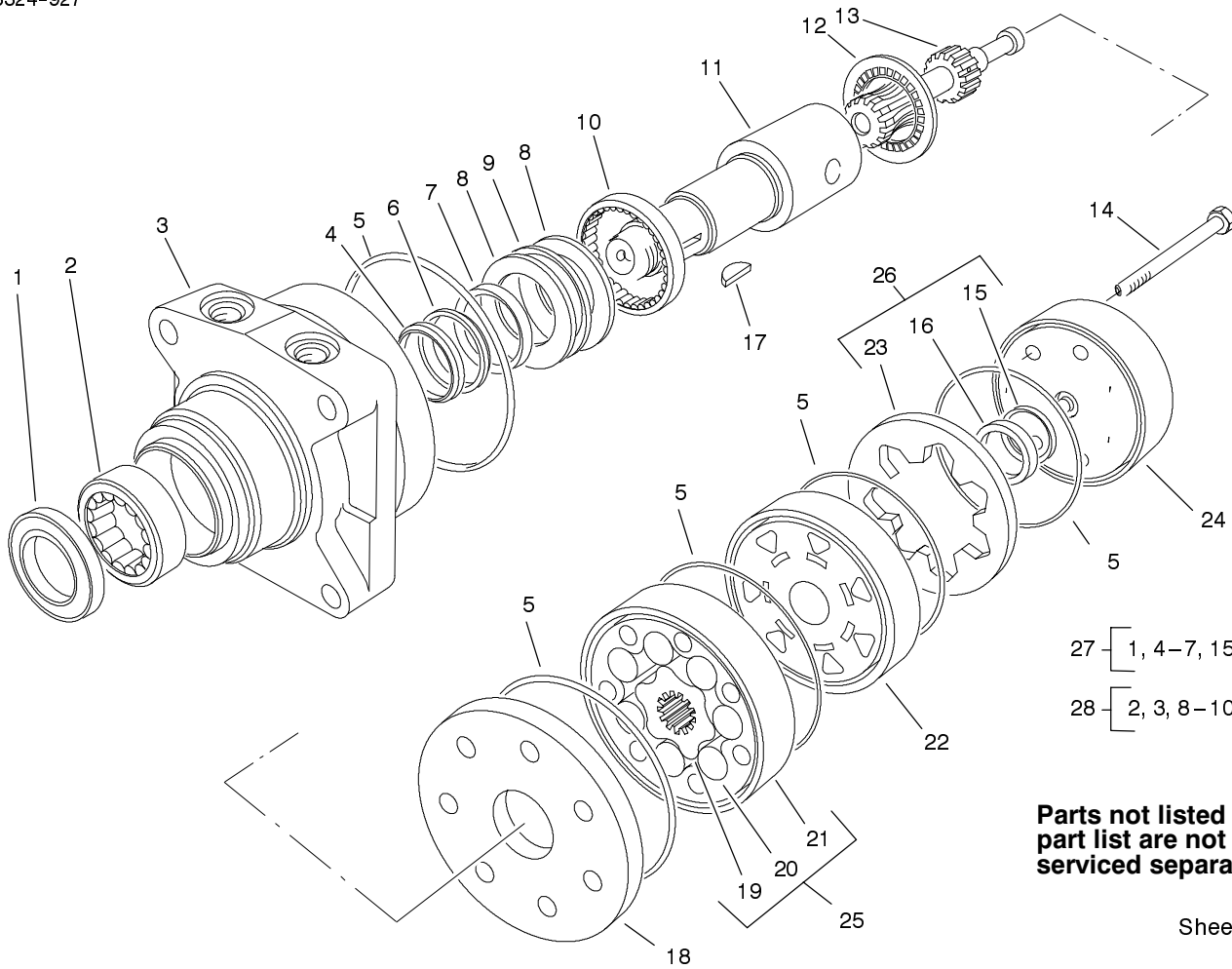
Sheet No.:A2
T-3549

Brake Assembly No. 71-1500

Ref. No.	Part No.	Qty.	Description
1	70-9870	1	Plate-Backing
2	70-9860	1	Cam-Brake
3	70-9850	1	Clip-Retaining
4	70-9880	2	Spring-Return
5	70-9840	2	Shoe-Brake

Ref. No.	Part No.	Qty.	Description

PROTOTYPE



- 27 [1, 4-7, 15
- 28 [2, 3, 8-10

Parts not listed in part list are not serviced separately

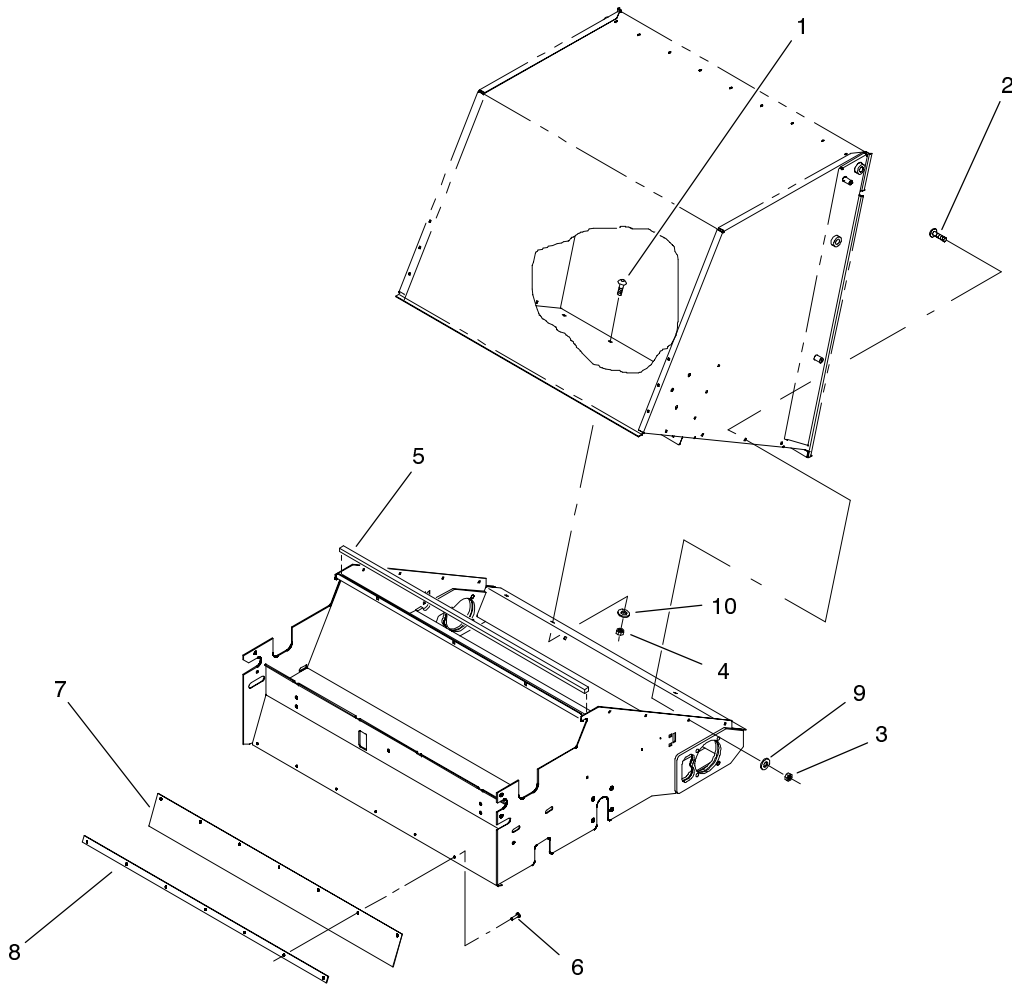
Sheet No.:A3
T-3356

Hydraulic Motor Assembly No. 92-9199

Ref. No.	Part No.	Qty.	Description
11	76-0860	1	Shaft-Coupling
12	76-0850	1	Bearing-Thrust
13	92-9761	1	Link-Drive
14	92-9762	7	Screw-HH
17	3257-42	1	Key-Woodruff
18	76-0870	1	Plate-Wear
22	76-0840	1	Manifold
24	76-0940	1	End Cover ASM
25	92-9763	1	Set-Rotor
26	76-0880	1	Commutator ASM
27	94-8178	1	Kit-Seal
28	76-0810	1	Wheel Motor Housing ASM

Ref. No.	Part No.	Qty.	Description

PROTOTYPE

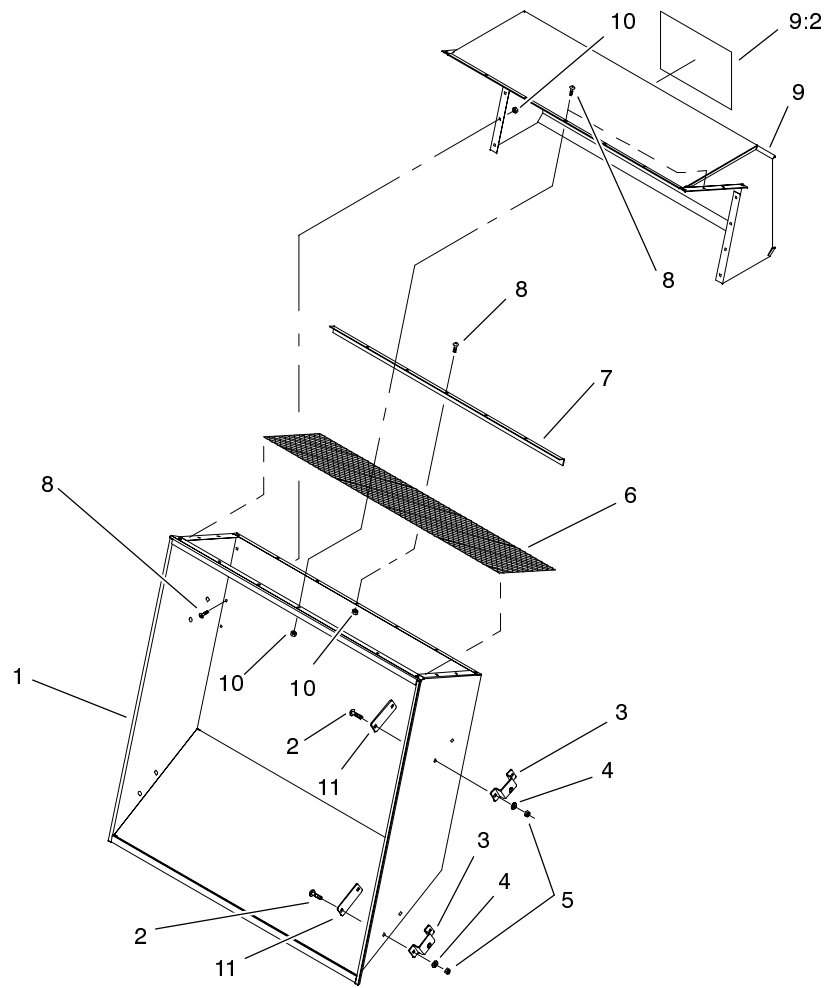


Sheet No.:14

Hopper Mounting Assembly

Ref. No.	Part No.	Qty.	Description
1	3231-2	2	Screw-CARR
2	3229-1	8	Screw-CARR
3	3296-42	8	Nut-Lock, NI
4	3296-39	2	Nut-Lock, NI
5	95-4788	1	Sponge-Neoprene
6	01-161-0090	7	Rivet-Pop
7	95-4802	1	Skirt-Rubber
8	95-4803-01	1	Bar-Reinforcement
9	3256-2	8	Washer-Flat
10	3256-24	2	Washer-Flat

Ref. No.	Part No.	Qty.	Description
PROTOTYPE			

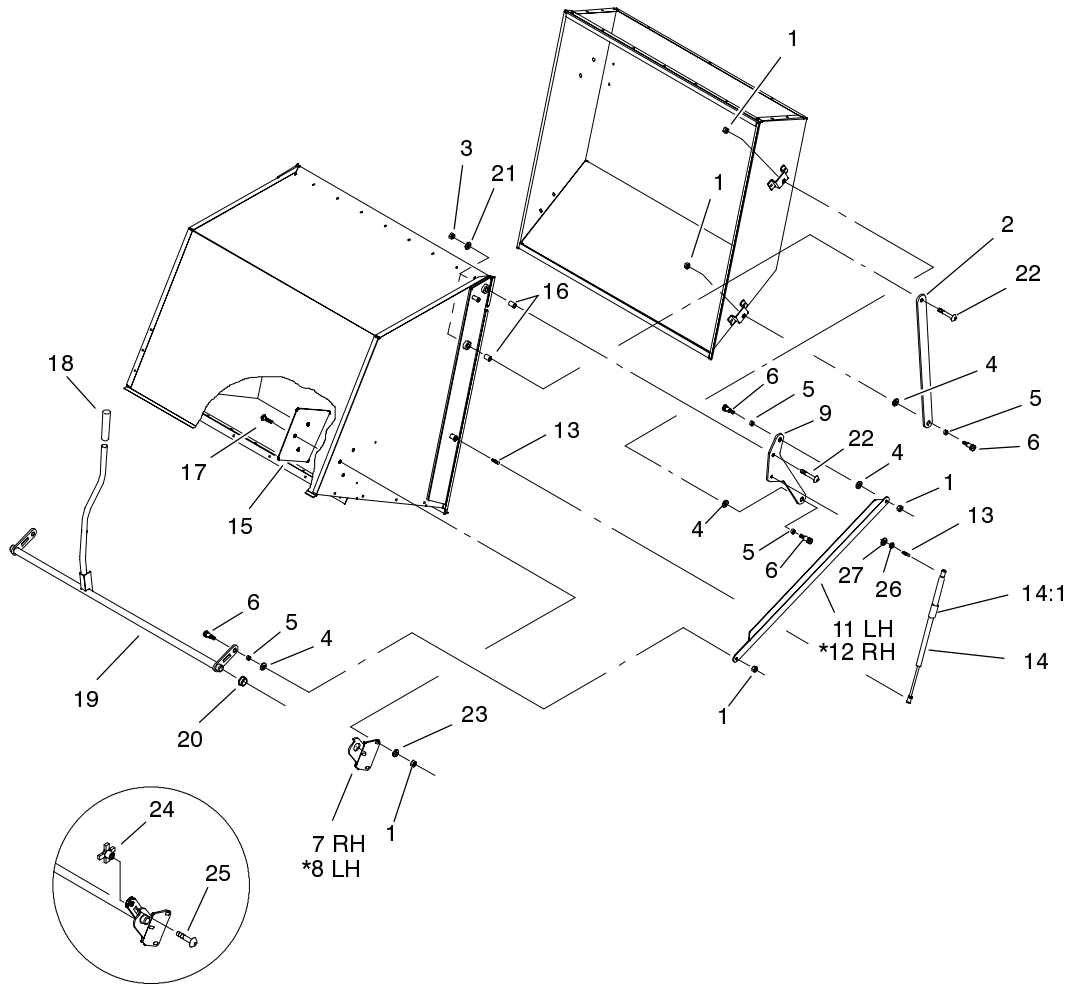


Sheet No.:15

Door Assembly

Ref. No.	Part No.	Qty.	Description	Ref. No.	Part No.	Qty.	Description
1	95-0249-01	1	Door-Hopper				
2	3231-2	8	Screw-CARR				
3	95-0247-01	4	Hinge-Door				
4	3256-24	8	Washer-Flat				
5	3296-39	8	Nut-Lock, NI				
6	95-0231-01	1	Hood-Screen				
7	95-0253-01	1	Screen - Clamp				
8	3229-1	26	Screw-CARR				
9	100-4013	1	Hood ASM				
9:2	67-7920	1	Decal				
10	3296-42	26	Nut-Lock, NI				
11	95-4829-01	4	Plate-Reinforcement				

PROTOTYPE



Sheet No.:16

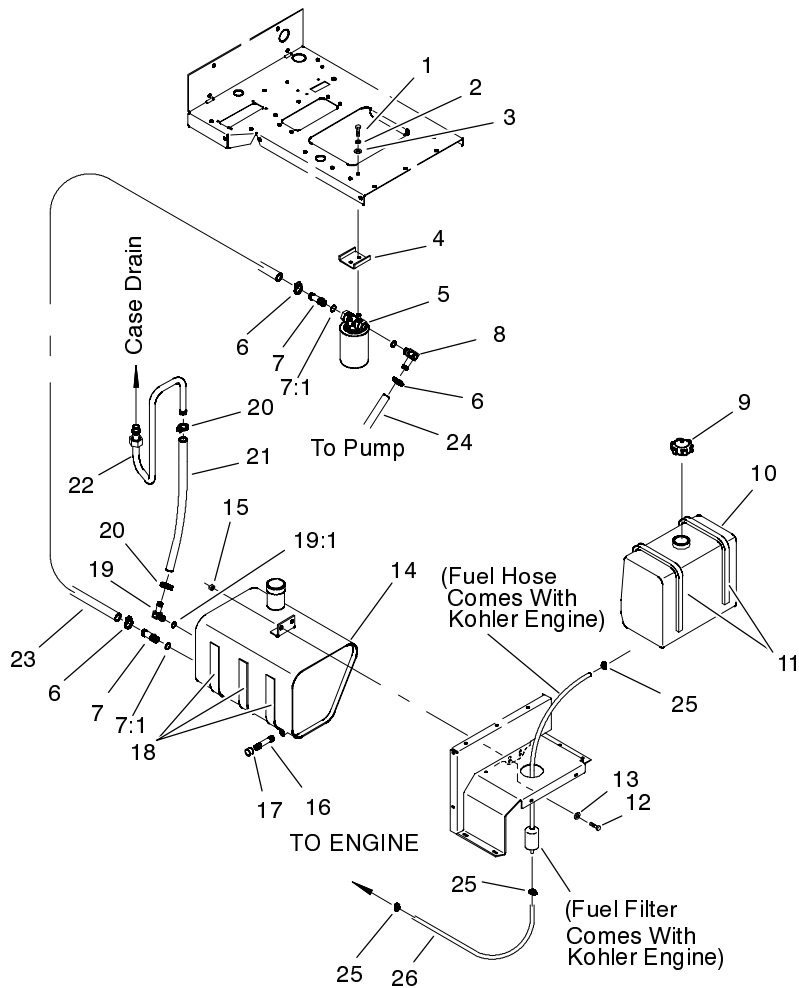
Door Lift Assembly

Ref. No.	Part No.	Qty.	Description
1	3296-59	14	Nut-Lock NI
2	95-0313-03	2	Link-Door, Lower
3	3296-53	4	Nut-Lock, NI
4	3256-26	8	Washer-Flat
5	47-2890	8	Bushing
6	95-4857	8	Screw-Shoulder, Socket Hd
7	95-4767-03	1	Bracket-Door, Lift RH
*8	95-0352-03	1	Bracket-Door, Lift LH
9	95-0316-03	2	Link-Door, Upper
11	95-0315-03	1	Link-Lift, LH
*12	95-0393-03	1	Link-Lift, RH
13	98-3104	4	Stud-Ball
14	95-4902	2	Gas Spring ASM
14:1	85-7490	1	Decal-Warning
15	95-4781	2	Plate-Support, Hopper
16	17-1620	4	Bushing-Wheel
17	3231-28	6	Screw-CARR
18	01-259-0010	1	Handle-Grip
19	95-0322-03	1	Lift-Door
20	01-126-0110	2	Bushing
21	3256-27	4	Washer-Flat
22	3233-32	4	Screw-CARR
23	3256-24	6	Washer-Flat
24	95-4769	1	Knob-Clamping

Ref. No.	Part No.	Qty.	Description
25	3233-9	1	Screw-CARR
26	3253-4	2	Washer-Lock
27	3256-23	2	Washer-Flat

PROTOTYPE

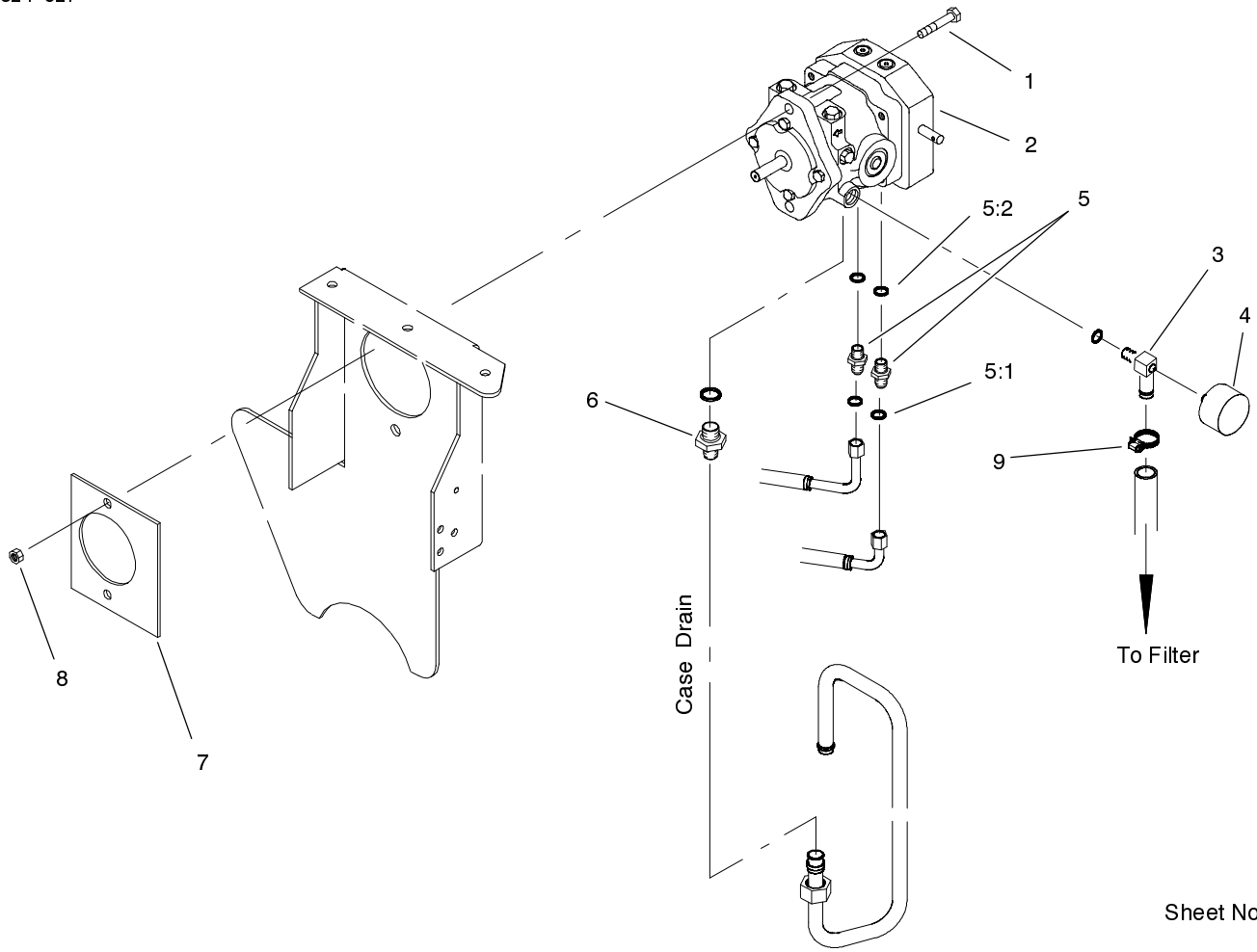
* Not illustrated



Sheet No.:17

Hydraulic Reservoir and Fuel Tank Assembly

Ref. No.	Part No.	Qty.	Description	Ref. No.	Part No.	Qty.	Description
1	321-9	2	Screw-HH	25	2412-108	3	Clamp-Worm
2	3253-3	2	Washer-Lock	26	95-4801	1	Hose-Fuel
3	3256-22	2	Washer-Flat				
4	95-0267-03	1	Mount-Filter, Oil				
5	95-4818	1	Oil Filter ASM				
6	2412-34	3	Clamp-Hose				
7	354-73	2	Fitting				
7:1	237-81	1	O-Ring				
8	01-201-1080	1	Fitting-Hyd				
9	95-4766	1	Fuel Cap ASM				
10	62-4040	1	Tank-Fuel				
11	95-4789	2	Sponge-Neoprene				
12	323-6	2	Screw-HH				
13	3256-24	2	Washer-Flat				
14	95-0013	1	Tank-Hydraulic				
15	3296-39	2	Nut-Lock, NI				
16	289-51	1	Nipple				
17	288-10	1	Cap-Pipe				
18	18-204-1781	3	Strap-Gas Tank				
19	95-4779	1	Fitting-Hydraulic				
19:1	237-80	1	O-Ring				
20	2412-129	2	Clamp-Hose				
21	95-4777	1	Hose-Hydraulic				
22	95-4774	1	Tube-Drain, Case				
23	95-4776	1	Hose-Hydraulic				
24	95-4775	1	Hose-Hydraulic				



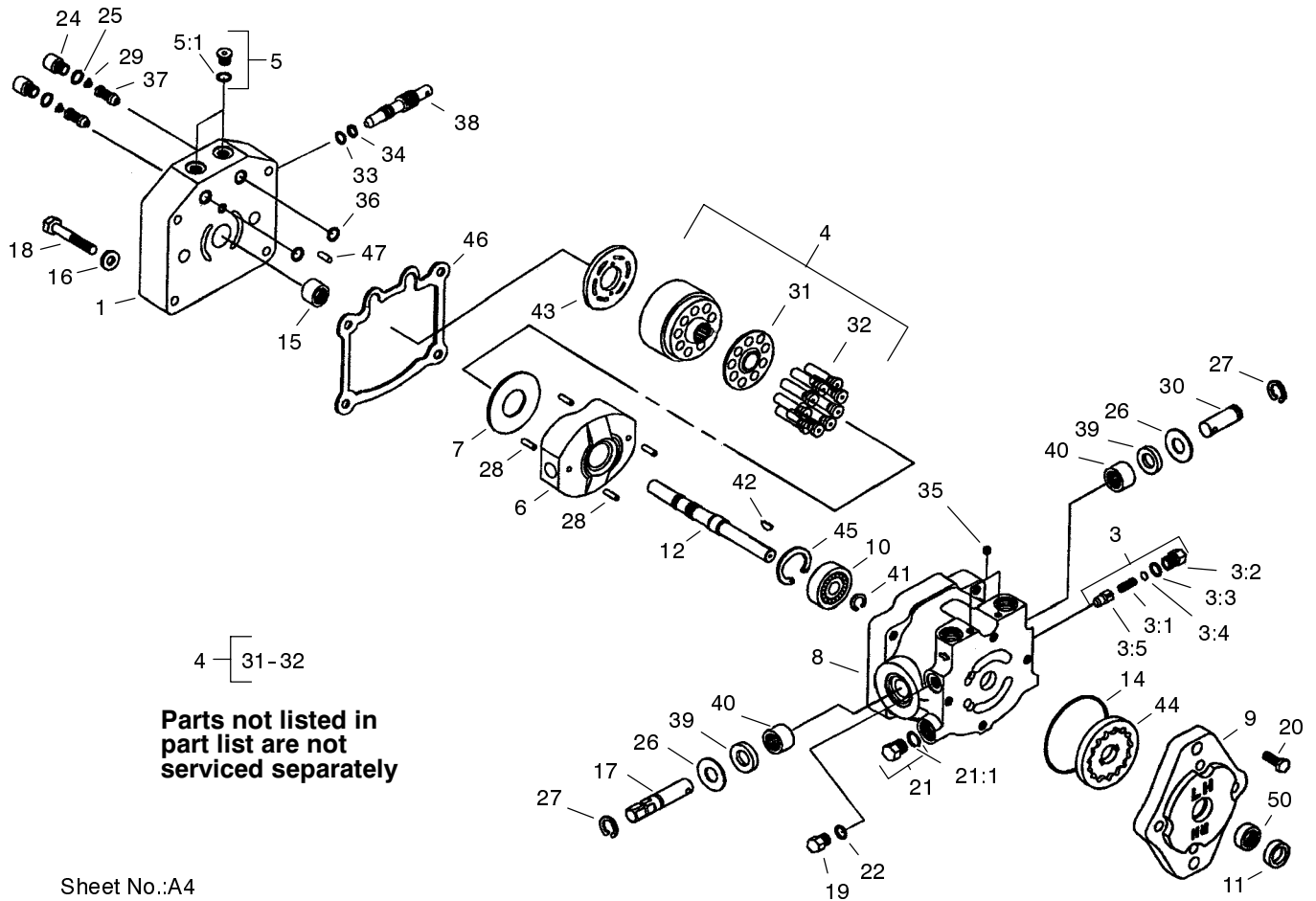
Sheet No.:18

Pump Assembly

Ref. No.	Part No.	Qty.	Description
1	3274-5	2	Screw-HSH
2	95-0156	1	Pump-Variable
3	95-4778	1	Fitting-Hyd, Barb
4	95-0334	1	Gauge-Vacuum
5	340-4	2	Adapter
5:1	237-30	1	O-Ring
5:2	237-79	1	O-Ring
6	01-201-4680	1	Fitting-Hyd
7	92-4679-01	1	Plate-Hydrostat, Reinforce
8	3296-23	2	Nut-Lock, NI
9	2412-34	1	Clamp-Hose

Ref. No.	Part No.	Qty.	Description

PROTOTYPE

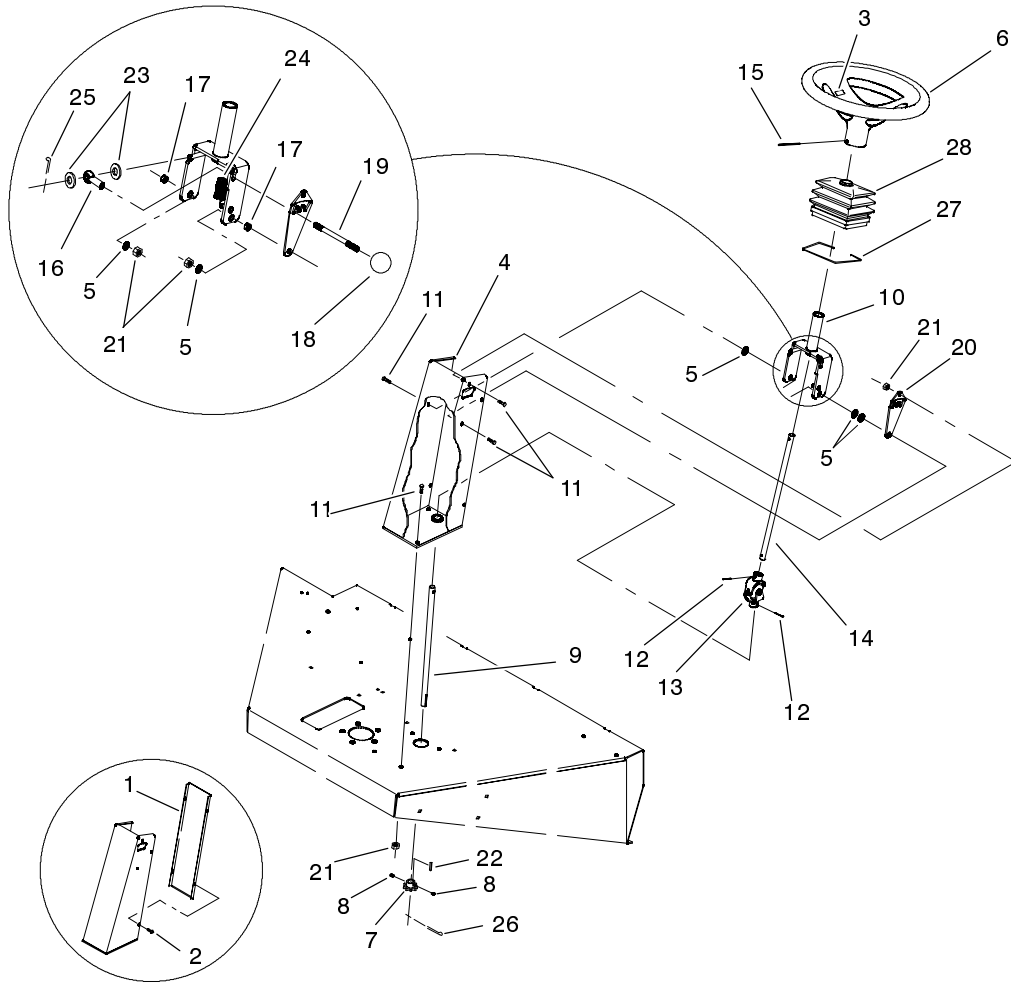


Sheet No.:A4
T-3746

Hydraulic Pump Assembly No. 95-0156

Ref. No.	Part No.	Qty.	Description
1	95-4897	3	Cap-End
3	49-8510	1	Kit-Valve
3:1	25-2480	1	Spring-Valve
3:2	25-2460	2	Plug-Hex Hd
3:3	28-3400	2	O-Ring
3:4	25-2470	1	Pack-Shim
3:5	83-7260	1	Cone-Charge Relief
4	48-1800	1	Kit-Cylinder Block
5	75-0170	2	Plug-Thread, Straight
5:1	92-8777	1	O-Ring
6	25-2450	1	Plate-Swash, Variable
7	25-2380	1	Plate-Thrust
8	95-4898	1	Variable Housing ASM
9	25-2690	1	Housing-Pump, Charge
10	95-5809	1	Bearing-Ball
11	93-4133	1	Seal-Lip
12	95-4899	1	Shaft
14	95-4904	1	O-Ring
15	67-8080	1	Bearing-Needle
16	93-0312	1	Washer-Hardened
17	88-8180	1	Shaft-Trunnion
18	323-12	4	Screw-HH
19	25-2460	2	Plug-Hex Hd
20	322-4	4	Screw-HH
21	88-8210	1	Plug

Ref. No.	Part No.	Qty.	Description
21:1	28-3570	1	O-Ring
22	28-3400	2	O-Ring
24	95-4900	2	Plug
25	75-0240	2	O-Ring
26	25-2510	2	Washer-Flat
27	32151-79	2	Ring-Retaining, Ext.
28	83-3880	4	Pin-Spring
29	75-0140	2	Spring-Conical
30	25-2500	1	Shaft-Trunnion
33	69-3840	1	O-Ring
34	25-2630	1	Ring-Back-Up
35	75-0160	2	Plug-Pipe
36	95-4903	2	O-Ring
37	95-4901	2	Valve
38	88-8220	1	Valve-By-Pass
39	25-3210	2	Seal-Lip
40	252-82	2	Bearing
41	94-3996	1	Ring-Retaining
42	3257-32	1	Key-Woodruff
43	88-8160	1	Plate-Valve
44	95-5812	1	Gerotor ASM
45	32151-75	1	Ring-Retaining
46	25-2400	1	Gasket
47	25-2430	1	Pin-Dowel
49	83-7260	1	Cone-Charge Relief
50	67-8050	1	Bearing-Needle



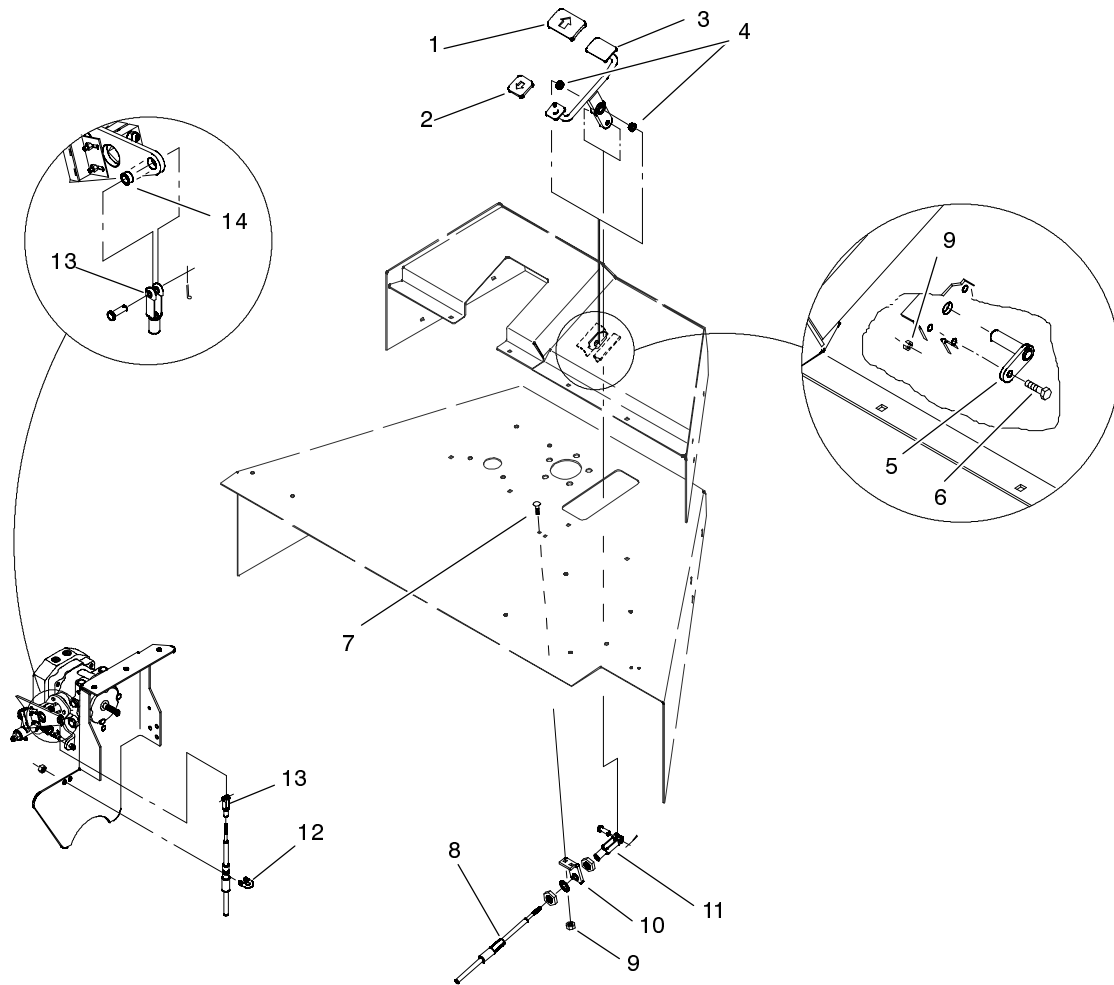
Sheet No.:19

Tilt Assembly

Ref. No.	Part No.	Qty.	Description
1	95-4746	1	Steering Cover ASM
2	87-6620	4	Screw-Special
3	98-1459	1	Decal-Toro
4	95-4745	1	Housing-Steering
5	3256-23	5	Washer-Flat
6	98-1470	1	Wheel-Steering
7	98-8871	1	Sprocket-Steering
8	3245-1	2	Screw-Set, HSH
9	98-8870	1	Shaft-Steering, Lower
10	95-4744	1	Bracket-Steering
11	322-6	7	Screw-HH
12	32121-15	2	Pin-Roll
13	85-9200-03	1	Knuckle-Steering
14	85-9220	1	Steering-Upper
15	32121-111	1	Pin-Roll
16	95-4737	1	Rod End-Lever, Lift
17	85-9120	2	Spacer-Tilt Pivot
18	233-42	1	Knob
19	95-4736	1	Shaft-Lever, Lift
20	95-4738	1	Sprocket-Adj, Tilt
21	3296-29	7	Nut-Lock
22	10-8040	1	Key-Square
23	3256-24	2	Washer-Flat
24	95-4798	1	Spring-Tilt
25	3272-10	1	Pin-Cotter
26	3272-16	1	Pin-Cotter

Ref. No.	Part No.	Qty.	Description
27	85-8930	1	Retainer-Boot
28	95-4714	1	Boot-Steering

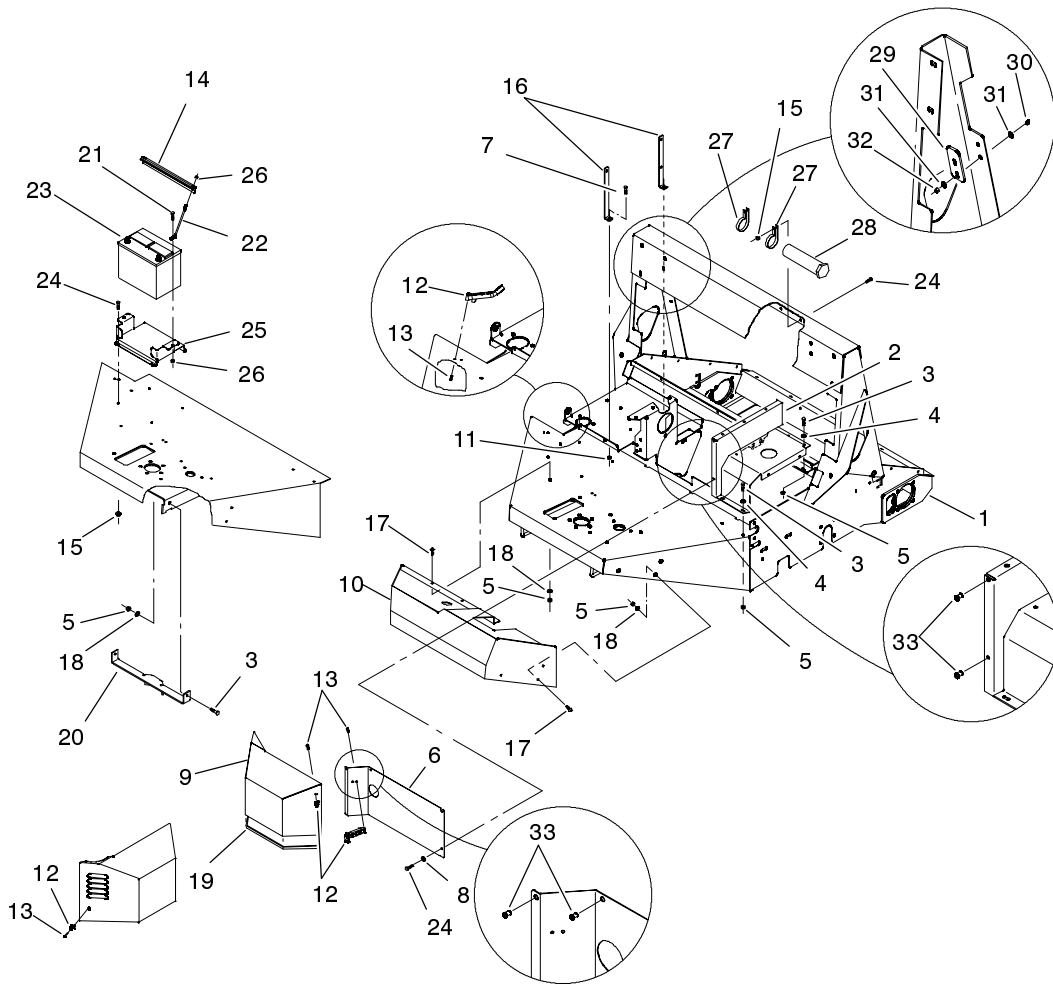
PROTOTYPE



Sheet No.:20

Traction Control Assembly

Ref. No.	Part No.	Qty.	Description	Ref. No.	Part No.	Qty.	Description
1	74-9100	1	Pad-Pedal, Forward				
2	74-9110	1	Pad-Pedal, Reverse				
3	95-4708-01	1	Pedal-Traction				
4	256-156	2	Bushing-Flange				
5	95-4808	1	Pin-Traction				
6	321-4	1	Screw-HH				
7	3229-2	2	Screw-CARR				
8	92-4699	1	Cable-Traction				
9	3296-42	3	Nut-Lock, NI				
10	92-4676-01	1	Mount-Cable				
11	95-4727	1	Clevis-Pedal, Traction				
12	95-4731	1	U-Bolt				
13	95-4728	1	Clevis				
14	95-4721	1	Straight Bushing				

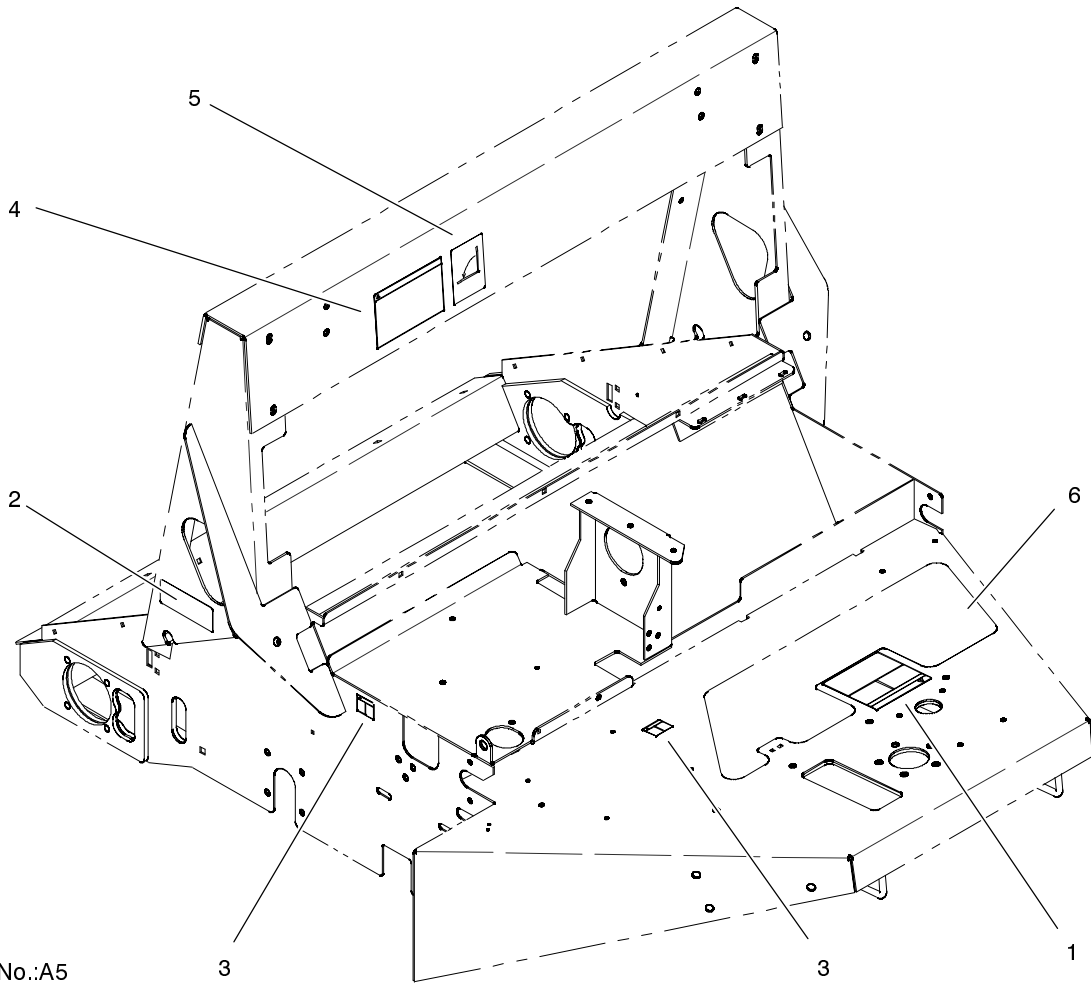


Sheet No.:38

Main Frame Assembly

Ref. No.	Part No.	Qty.	Description
1	100-4012	1	Main Frame ASM
2	95-0395-03	1	Mount-Access Cover
3	322-5	7	Screw-HH
4	3256-23	5	Washer-Flat
5	32128-20	17	Nut-HF
6	95-0165-03	1	Plate-Seat, Front
7	323-6	2	Screw-HH
8	3256-22	3	Washer-Flat
9	95-4855	1	Hydrostat Guard ASM
9:1	67-5360	1	Decal-Danger
9:2	67-7320	1	Decal
10	95-4717-01	1	Riser-Floor Board
11	32128-43	2	Nut-Flange
12	94-5626	2	Latch-Draw, Flexible
12:1	100-5806	2	Handle - Latch
12:2	100-5807	2	Keeper - Latch
13	32105-8	5	Screw
14	24-6420-03	1	Holddown-Battery
15	32128-33	6	Nut-HF
16	95-4709-03	2	Bar-Support, Access Cover
17	3230-2	10	Screw-CARR
18	3256-3	14	Washer-Flat
19	95-4833	1	Edging-Rubber
20	95-4761-03	1	Stop-Steering
21	322-3	2	Screw-HH

Ref. No.	Part No.	Qty.	Description
22	24-6390	2	Stud-Holddown, Battery
23	55-7291	1	Battery (Wet)
24	321-4	8	Screw-HH
25	95-0172-03	1	Mount-Battery
26	3296-29	3	Nut-Lock
27	2412-133	2	R-Clamp
28	74-0720	1	Tube-Manual
29	95-4784-03	1	Plate-Stop, Linkage
30	323-7	2	Screw-HH
31	3256-4	4	Washer-Flat
32	3296-39	2	Nut-Lock, NI
33	32148-6	4	Nut-Insert



Sheet No.:A5

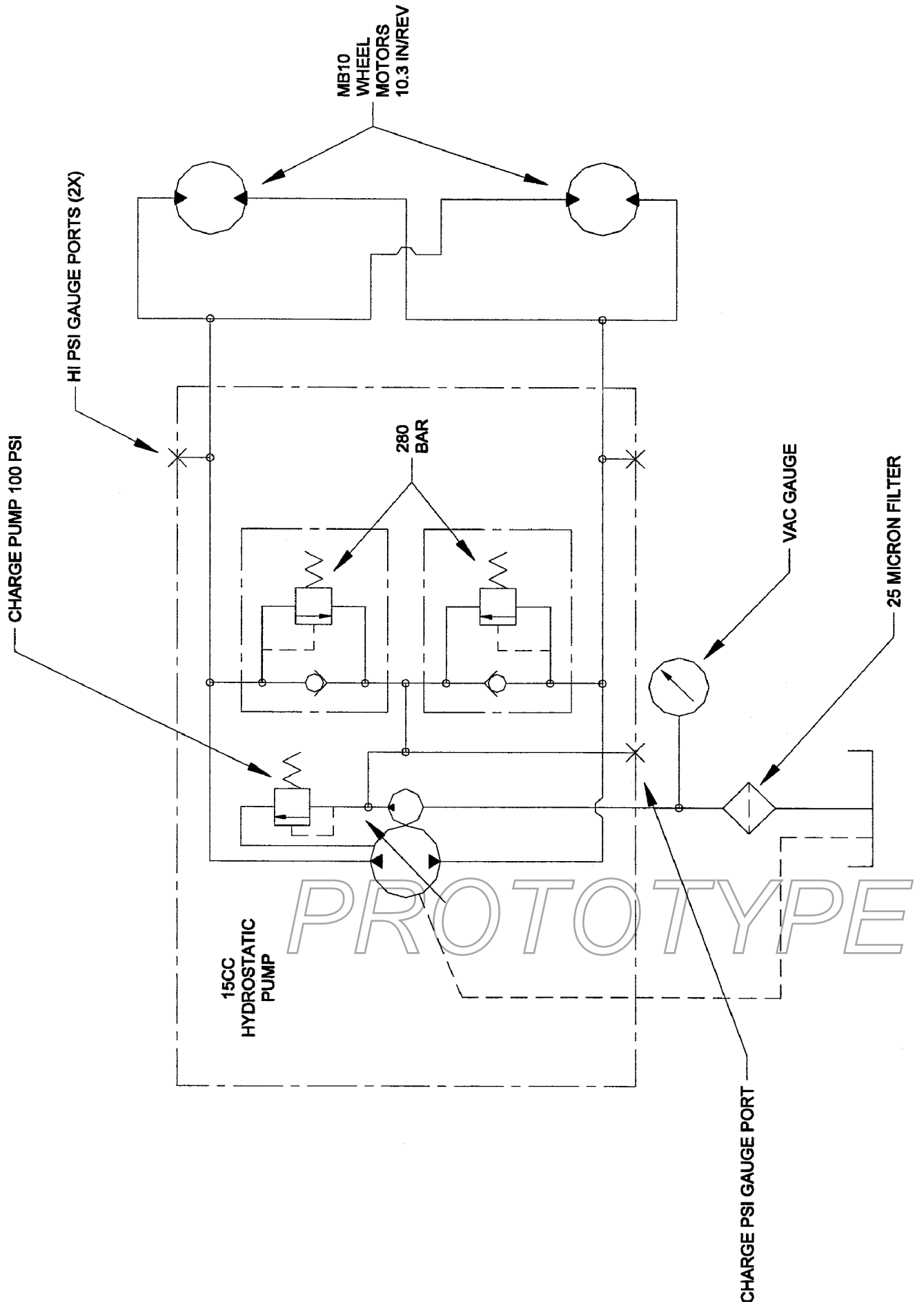
Main Frame Decal Assembly No. 100-4012

Ref. No.	Part No.	Qty.	Description
2	82-4600	2	Decal-Hydro
3	88-8950	2	Decal-Warning
4	95-0387	1	Decal-Operating Instruction
5	95-0388	1	Decal-Operating, Hopper
6	95-0398	1	Tread-Floorboard
7	01-506-0090	1	Decal-Sweeping On Slope

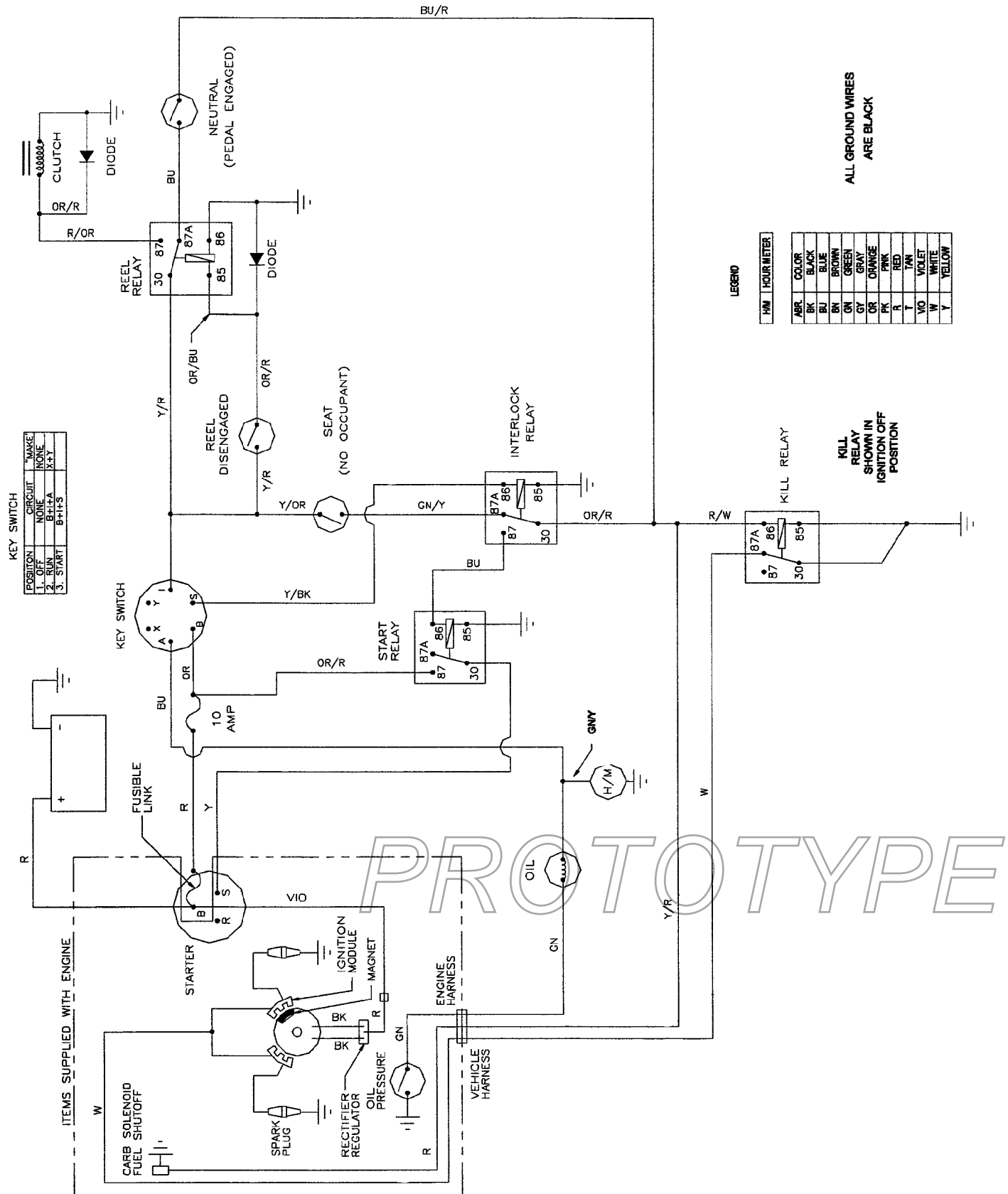
Ref. No.	Part No.	Qty.	Description

PROTOTYPE

Hydraulic Schematic



Electric Schematic



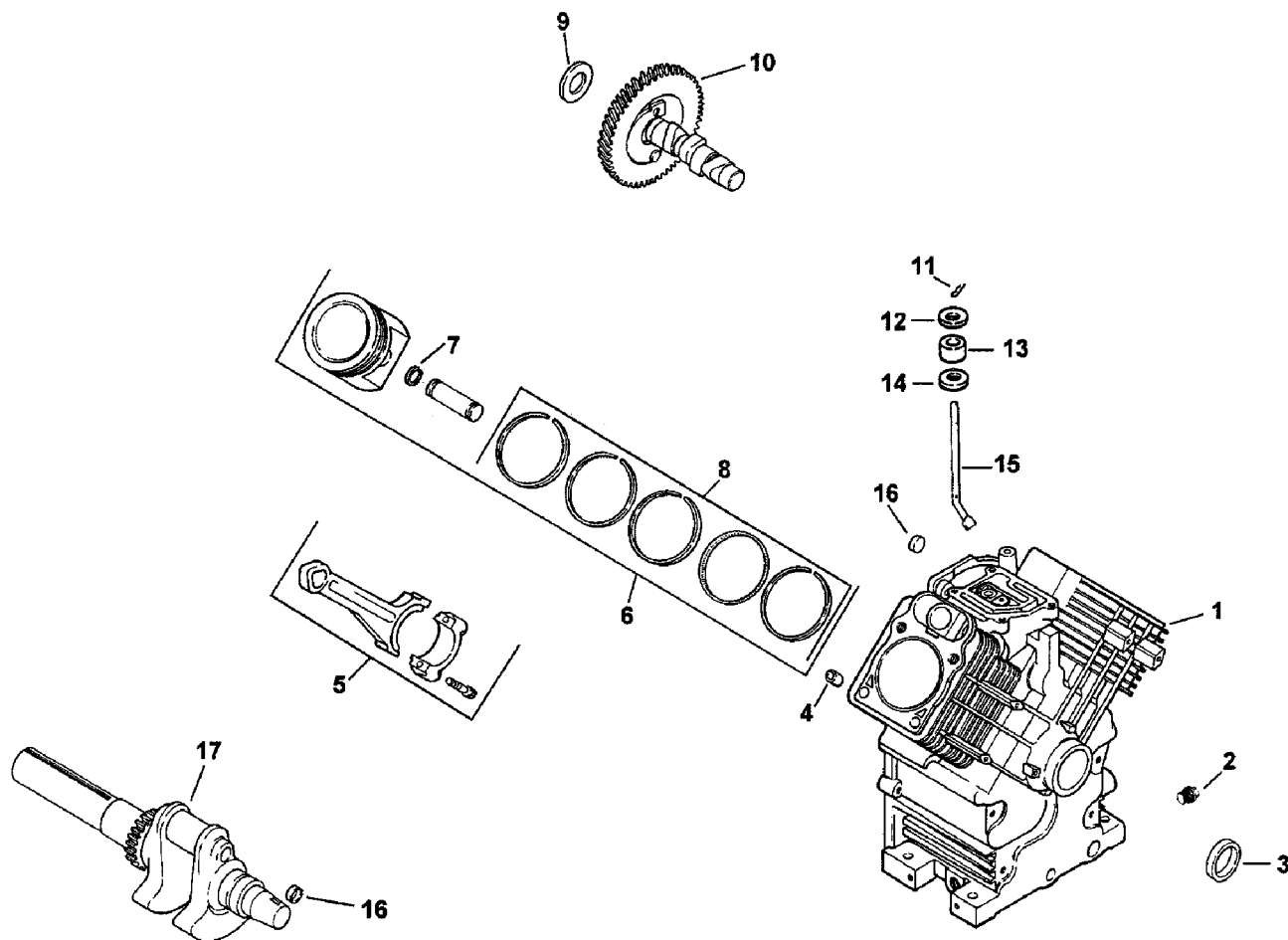
KEY SWITCH

POSITION	CIRCUIT	WAKE
1. OFF	NONE	NONE
2. RUN	B+H+A	X+Y
3. START	B+H+S	

LEGEND

HM	HOUR METER
BR	BLACK
BU	BLUE
BN	BROWN
GN	GREEN
GY	GRAY
OR	ORANGE
PK	PINK
R	RED
T	TAN
VO	VIOLET
W	WHITE
Y	YELLOW

ALL GROUND WIRES ARE BLACK



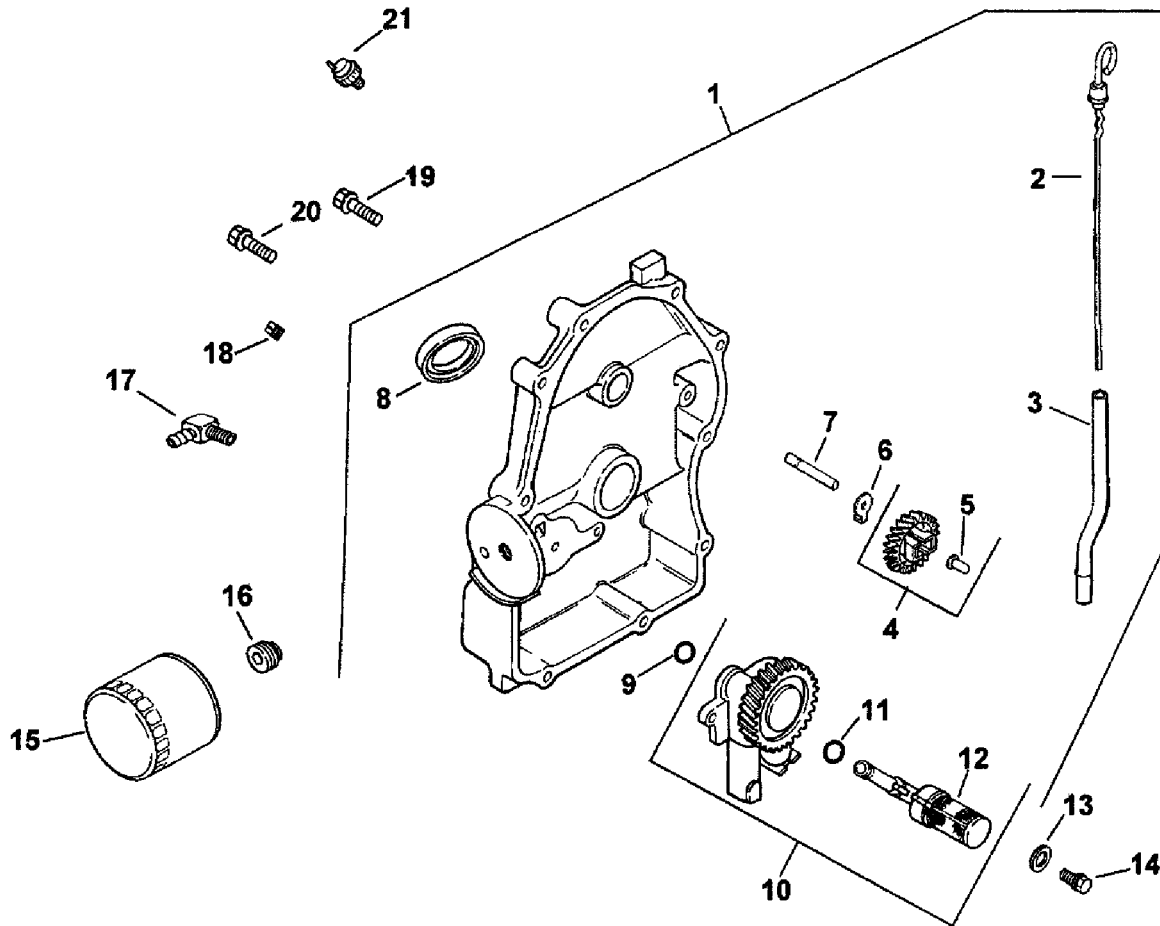
Crankshaft and Crankcase Assembly Engine - Kohler Model CH18S Spec No. 62595

Ref. No.	Part No.	Qty.	Description	Ref. No.	Part No.	Qty.	Description
☆1		1	Block-Cylinder (Use Mini-Block)	12	M-931010-S	1	Washer-Nylon (top)
2	25 139 57-S	2	Plug-Square Head	13	28 032 09-S	1	Seal-Governor Cross
3	24 380-13-S	1	Seal-Oil Front	14	24 468 15-S	1	Washer (bottom)
4	12 380 17-S	6	Pin-Dowel, Locating	15	24 144 33-S	1	Shaft-Governor Shaft
5	24 067 13-S	2	Rod-Connecting (Std.)	16	52 139 09-S	2	Plug-Cup
*	24 067 14-S	2	Rod-Connecting (.25)	17	24 014 84-S	1	Crankshaft (Incl #16)
6	24 874 17-S	2	Piston w/Ring Set (Std.) (Incl. #7 & 8)	*	24 755 107-S	1	Gasket Set
*	24 874 18-S	2	Piston w/Ring Set (.25)	*	24 782 15-S	1	Miniblock
*	24 874 19-S	2	Piston w/Ring Set (.50)				
7	24 018 01-S	4	Retainer-Piston Pin				
8	24 108 11-S	2	Ring Set (Std.)				
*	24 108 12-S	2	Ring Set (.25)				
*	24 874 13-S	2	Ring Set (.50)				
9	12 422 09-S	A/R	Shim-Camshaft				
*	12 422 13-S	A/R	Shim-Camshaft				
*	12 422 07-S	A/R	Shim-Camshaft				
*	12 422 08-S	A/R	Shim-Camshaft				
9	12 422 10-S	A/R	Shim-Camshaft				
*	12 422 11-S	A/R	Shim-Camshaft				
*	12 422 12-S	A/R	Shim-Camshaft				
10	24 012 10-S	1	Camshaft				
11	24 018 09-S	1	Ring-Retainer				

☆ Not Serviced

* Not Illustrated

Obtain parts locally from a Kohler dealer



Oil Pan and Lubrication Assembly Engine - Kohler Model CH18S Spec No. 62595

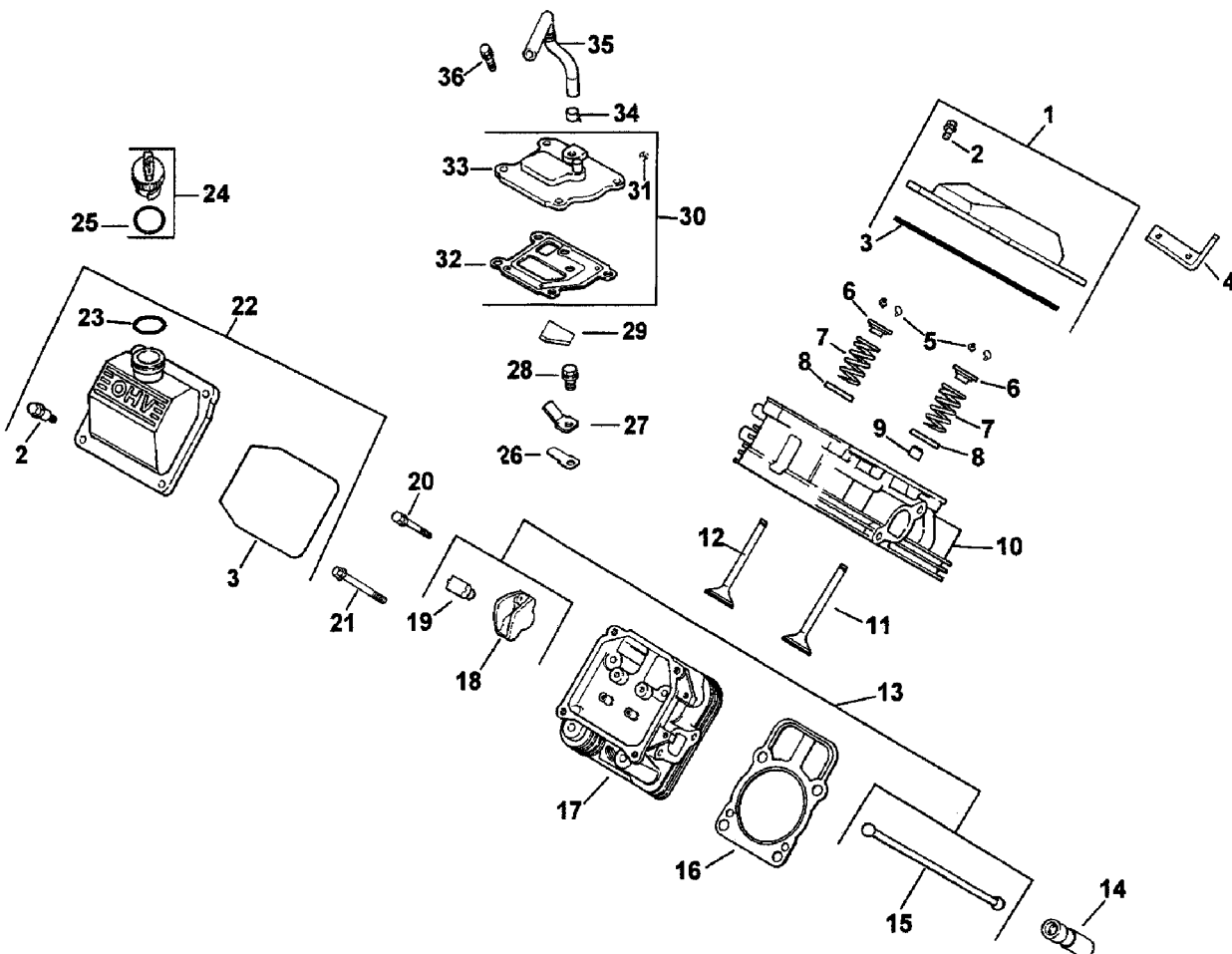
Ref. No.	Part No.	Qty.	Description
1	24 009 82-S	1	Closure Plate ASM (Incl #2-12)
2	24 038 10-S	1	Dipstick
3	24 755 121-S	1	Kit-Tube-Dipstick
4	24 043 12-S	1	Kit-Governor Gear (Incl #5)
5	12 380 01-S	1	Pin-Governor Regulating
6	52 448 02-S	1	Tab-Locking
7	12 144 02-S	1	Shaft-Governor Gear
8	52 032 08-S	1	Seal-Oil
9	24 153 08-S	1	O-Ring
10	24 393 10-S	1	Oil Pump ASM (Incl #11-12)
11	24 153 01-S	1	O-Ring - Oil Pump
12	24 381 04-S	1	Pick-Up - Oil
13	M-631005-S	2	Washer-Plain
14	M-645025-S	2	Screw-Hex Flange
15	52 050 02-S	1	Filter-Oil
16	24 136 01-S	1	Nipple-Oil Filter
17	25 155 02-S	1	Connector- 90° Hose
18	25 139 60-S	1	Plug-Allen Head
19	24 086 16-S	9	Screw-Oil Pressure
20	24 086 17-S	1	Screw-Hex Flange

Ref. No.	Part No.	Qty.	Description
21	25 099 24-S	1	Switch-Oil Pressure
*	25 113 05-S	1	Decal-Oil Sentry

PROTOTYPE

* Not Illustrated

Obtain parts locally from a Kohler dealer

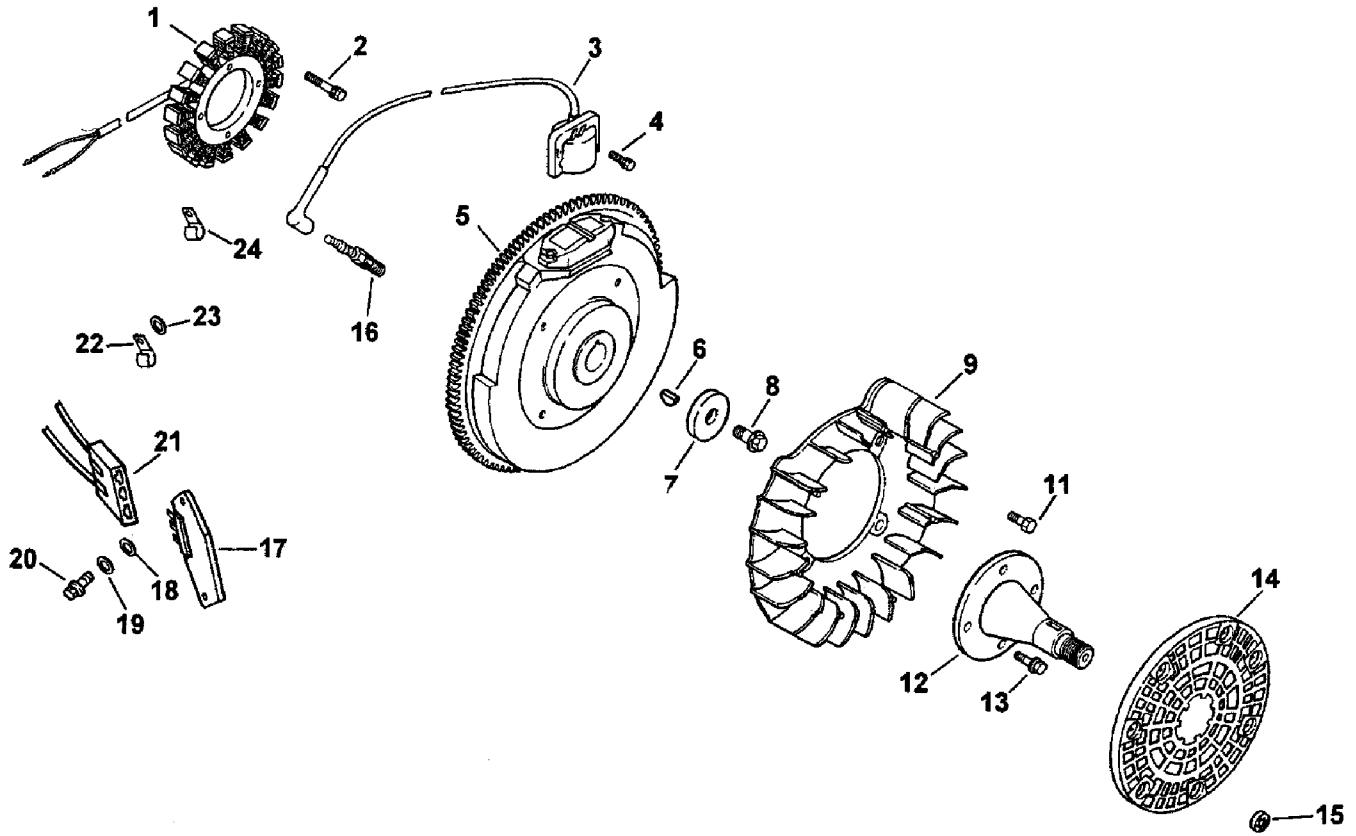


Head, Valve and Breather Assembly Engine - Kohler Model CH18S Spec No. 62595

Ref. No.	Part No.	Qty.	Description	Ref. No.	Part No.	Qty.	Description
1	24 755 74-S	1	Kit-Valve Cover-Plain (Incl #2-3)	21	12 072 09-S	8	Stud-Cylinder head
2	24 086 32-S	4	Screw-Shoulder	*	24 468 16-S	8	Washer-Flange
3	24 153 16-S	1	O-Ring	*	24 100 10-S	8	Nut-Hex Flange
4	24 445 01-S	1	Strap-Lifting	22	24 755 75-S	1	Kit-Valve Cover-Oil Fill (Incl #2, 3 & 23)
5	12 755 03-S	4	Kit-Retainer	23	24 153 09-S	1	O-Ring
6	12 173 01-S	4	Cap-Valve Spring	24	25 755 13-S	1	Kit-Oil Fill Cap (Incl #25)
7	24 089 02-S	4	Spring-Valve	25	12 153 03-S	1	O-Ring - Oil Fill Cap
8	230511-S	4	Retainer-Spring	26	24 402 03-S	1	Reed-Breather
9	24 032 05-S	2	Seal-Valve Stem	27	12 018 01-S	1	Retainer-Reed
10	24 318 68-S	1	Head ASM # 1 Cylinder	28	M-545010-S	1	Screw-Hex Flange
11	24 017 01-S	2	Valve-Intake (Std.)	29	24 050 01-S	1	Filter-Breather
*	24 017 02-S	2	Valve-Intake (.25)	30	24 033 01-S	1	Kit-Breather Cover w/Gasket (Incl #31-33)
12	24 016 01-S	2	Valve-Exhaust (Std.)	31	25 139 60-S	1	Plug-Allen Head
*	24 016 02-S	2	Valve-Exhaust (.25)	32	24 041 23	1	Gasket-Breather
13	24 755 66-S	1	Kit-Valve Train (Incl #15, 18-19)	33	24 096 58-S	1	Cover-Breather
14	25 351 01-S	4	Lifter-Valve	34	25 237 14-S	1	Clamp-Hose
15	24 411 05-S	4	Rod-Push	35	24 326 26-S	1	Hose-Breather
16	24 041 05-S	2	Gasket-Cylinder Head	36	M-645020-S	4	Screw-Hex Flange
17	24 318 71-S	1	Head ASM #2 Cylinder				
18	25 186 01-S	4	Arm-Rocker				
19	24 599 01-S	4	Pivot-Rocker Arm				
20	M-640034-S	4	Screw-Hex Flange				

* Not Illustrated

Obtain parts locally from a Kohler dealer



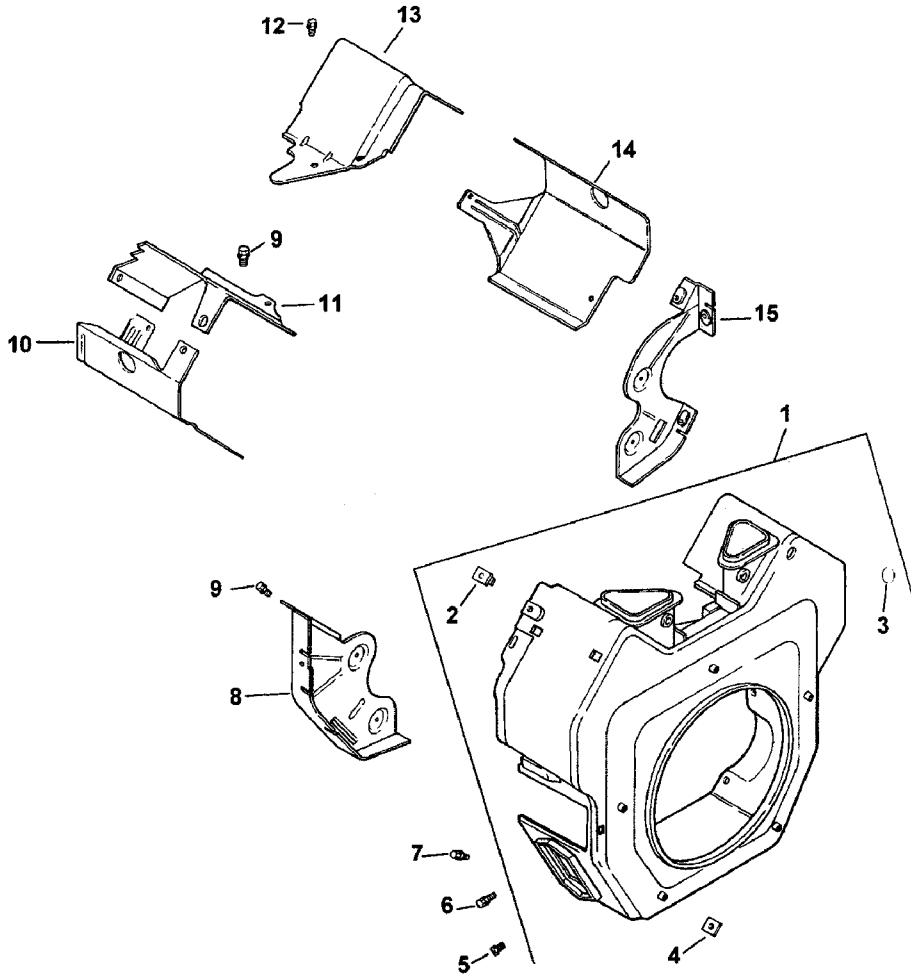
Ignition and Electrical Assembly Engine - Kohler Model CH18S Spec No. 62595

Ref. No.	Part No.	Qty.	Description
1	54 755 09-S	1	Kit-15 Amp Stator (Incl #24 176 71 Bracket)
2	M-548025-S	2	Screw-Hex Cap
3	24 584 01-S	2	Module-Ignition
4	M-545020-S	4	Screw-Hex Flange
5	24 025 04-S	1	Flywheel
6	X-42-15-S	1	Key
7	12 468 03-S	1	Washer-Flywheel Mtg. Screw
8	12 086 14-S	1	Screw-Hex Flange
9	24 157 01-S	1	Fan
11	25 086 47-S	4	Bolt-Shoulder
12	24 144 23-S	1	Shaft-Front Drive
13	M-839025-S	4	Screw-Hex Flange
14	24 162 16-S	1	Screen-Grass
15	24 018 03-S	3	Retainer
16	12 132 06-S	2	Plug-Spark
17	25 403 03-S	1	Rectifier/Regulator
18	X-22-11-S	1	Washer-Lock
19	X-25-92-S	2	Washer-Plain
20	24 086 18-S	2	Screw-Phillips Head
21	236602-S	1	Connector
22	235173-S	1	Clip-Cable
23	X-25-63-S	1	Washer-Plain

Ref. No.	Part No.	Qty.	Description
24	48 154 02-S	1	Clip-Cable
*	24 176 51-S	1	Harness-Wiring
*	25 518 12-S	1	Lead-Black (5"-18ga.)
*	24 176 71-S	1	Bracket-Stator Wire

* Not Illustrated

Obtain parts locally from a Kohler dealer

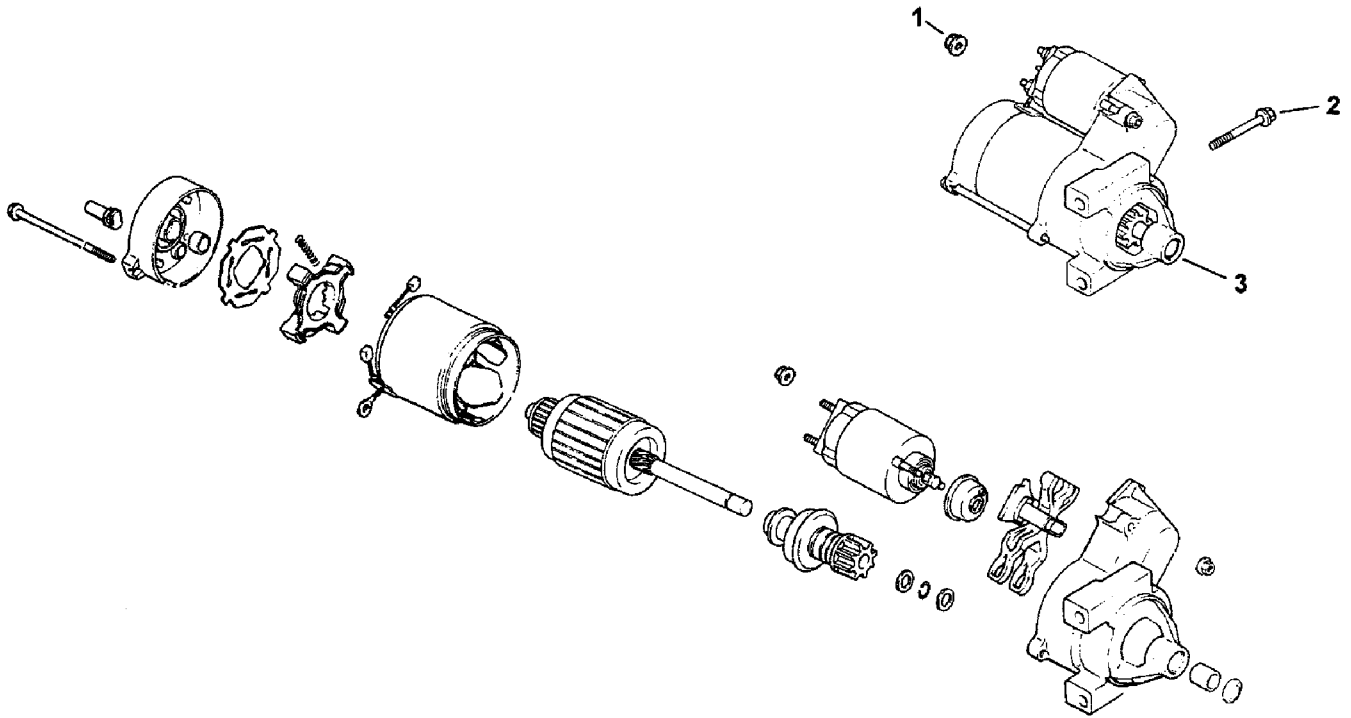


Blower Housing and Baffle Assembly Engine - Kohler Model CH18S Spec No. 62595

Ref. No.	Part No.	Qty.	Description	Ref. No.	Part No.	Qty.	Description
1	24 027 20-S	1	Housing-Blower (Incl #2-4)				
2	24 100 01-S	3	Nut-Plastic				
3	25 139 16-S	1	Plug-Button				
4	24 100 02-S	2	Nut-Plastic				
5	M-551016-S	1	Screw-Hex Flange				
6	M-545016-S	3	Screw-Hex Flange				
7	M-545020-S	5	Screw-Hex Flange				
8	24 146 16-S	1	Plate-Backing (#2 side)				
9	M-645016-S	6	Screw-Hex Flange				
10	24 063 20-S	1	Baffle-Cylinder Barrel (#2 side)				
11	24 063 17-S	1	Baffle-Valley (#2 side)				
12	M-545010-S	2	Screw-Hex Flange				
13	24 063 24-S	1	Baffle-Valley (#1 side)				
14	24 063 58-S	1	Baffle-Cylinder (#2 side)				
15	24 146 20-S	1	Plate-Backing (#1 side)				
*	24 113 94-S	1	Decal-HP				

* Not Illustrated

Obtain parts locally from a Kohler dealer

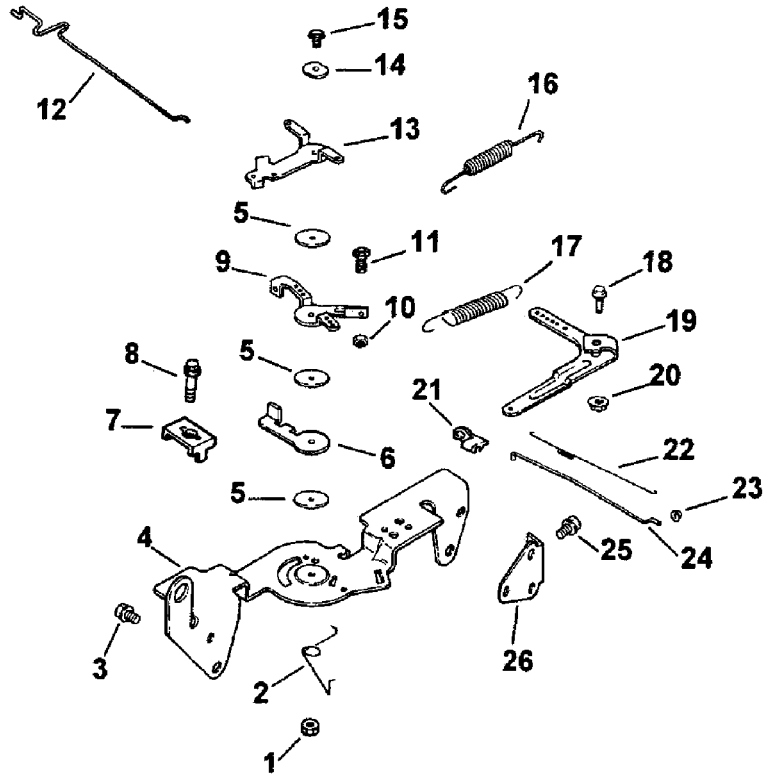


Starting System Assembly Engine - Kohler Model CH18S Spec No. 62595

Ref. No.	Part No.	Qty.	Description	Ref. No.	Part No.	Qty.	Description
1	M-839080-S	2	Screw-Hex Flange				
2	24 098 08-S	1	Starter-Solenoid Shift (Incl #4-18)				
3	M-841080-S	1	Nut-Hex Flange				
*	25 755 33-S	1	Kit-Pinion Cover				
*	25 221 01-S	1	Kit-Brush				
*	25 435 04-S	1	Kit-Solenoid				

PROTOTYPE

Obtain parts locally from a Kohler dealer



Engine Control Assembly Engine - Kohler Model CH18S Spec No. 62595

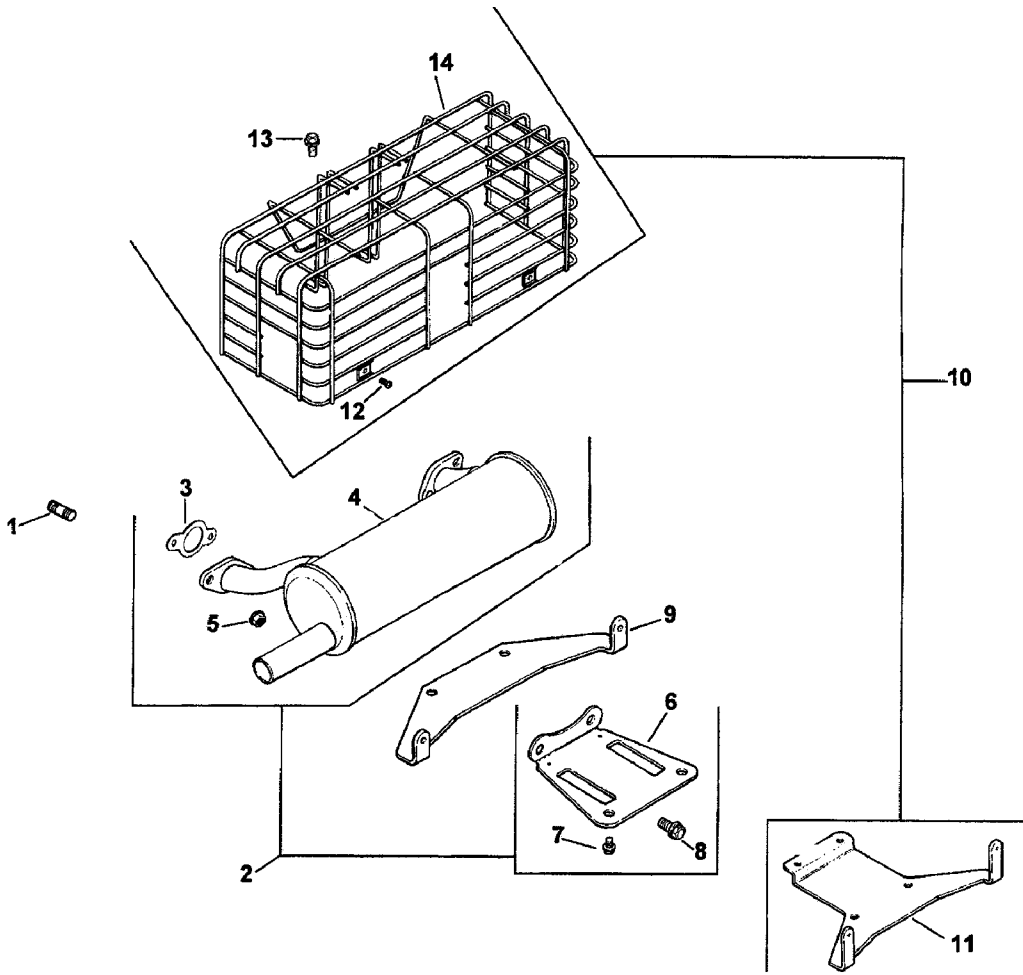
Ref. No.	Part No.	Qty.	Description
1	M-547050-S	1	Nut-Hex Flange
2	24 089 03-S	1	Spring-Choke Return
3	M-645016-S	4	Screw-Hex Flange
4	24 126 56-S	1	Bracket-Control
5	24 468 01-S	3	Washer-Plain
6	24 090 07-S	1	Lever-Throttle Acuator
7	12 237 01-S	2	Clamp-Cable
8	M-545016-S	3	Screw-Hex Flange
9	24 090 03-S	1	Lever-Throttle Control
10	M-446030-S	1	Nut-Hex Flange
11	M-401030-S	1	Screw-Hex Cap
12	24 079 02-S	1	Linkage-Choke
13	24 090 05-S	1	Lever-Choke
14	41 468 03-S	1	Washer-Wave
15	M-545020-S	1	Screw-Hex Flange
16	24 089 51-S	1	Spring-Throttle Limiter
17	24 089 45-S	1	Spring-Governor
18	24 211 03-S	1	Bolt
19	24 090 33-S	1	Lever-Governor
20	M-0641060-S	1	Nut-Hex Flange
21	25 158 11-S	1	Bushing-Throttle Linkage
22	25 089 01-S	1	Spring-Linkage

Ref. No.	Part No.	Qty.	Description
23	25 158 08-S	1	Bushing-Linkage Retaining
24	24 079 01-S	1	Linkage-Throttle
25	M-639010-S	2	Screw-Hex Flange
26	24 126 04-S	2	Bracket-Support
*	M-541050-S	1	Nut-Hex Flange
*	X-20-1-S	1	Washer-lock

(The following are used with one of M-545016 as positive throttle stop in bracket 24 126 56-S)

* Not Illustrated

Obtain parts locally from a Kohler dealer



Exhaust Assembly Engine - Kohler Model CH18S Spec No. 62595

Ref. No.	Part No.	Qty.	Description
1	25 072 04-S	4	Stud
2	24 786 06-S	1	Kit-Low Mount Muffler #1 Side Outlet (Incl #3-8)
3	24 041 02-S	2	Gasket-Exhaust
4	24 068 06-S	1	Muffler-Low Mount
5	M-841080-S	4	Nut-Hex Flange
6	24 126 12-S	1	Bracket-Muffler
7	M-650012-S	2	Screw-Hex Flange
8	M-839020-S	2	Screw-Hex Flange
9	24 126 10-S	1	Bracket-Muffler Guard
10	24 755 80-S	1	Kit-Muffler Guard (Incl #11-14)
11	24 126 48-S	1	Bracket-Muffler Guard
12	M-550010-S	2	Screw-Hex Flange
13	M-545016-S	2	Screw-Hex Flange
14	24 314 02-S	1	Guard-Muffler

Ref. No.	Part No.	Qty.	Description

* Not Illustrated

Obtain parts locally from a Kohler dealer



PROTOTYPE