



Z Master[®] Z355

with Mower and Bagger

Model No. 74189 – 20000501 and Up

Parts Catalog

Ordering Replacement Parts

To order replacement parts, please supply: the part number, the quantity, and the description of each part desired.

Understanding Reference Numbers

Each identified part in an illustration has a reference number. The reference number for a part also appears in the parts list, along with other information about the part.

This catalog uses two special reference number formats, one to indicate parts in a service assembly and another to indicate the quantity of a given part in an illustration.

Service Assembly Reference Numbers

Parts in service assemblies have reference numbers in the form **a:b**. The **a** represents the reference number of the entire service assembly and the **b** represents a sequential number unique to each part within the service assembly.

For example, a wheel assembly might be identified by reference number **6**, the tire by **6:1**, the valve by **6:2**, and the wheel by **6:3**. When you order the assembly identified by reference number **6**, you receive all parts identified by reference numbers **6:1**, **6:2**, and **6:3**. However, you may also order any part individually.

Reference numbers of this type appear in illustrations and in part lists.

Reference Numbers Indicating Quantity

In an illustration, if a reference number indicates more than one part, the reference number has the form **nX y**. The **n** represents the quantity of the part, the **X** is the multiplication symbol, and the **y** represents the reference number.

For example, in an illustration, the reference number **2X 37** means that two of the parts identified by reference number **37** are indicated.

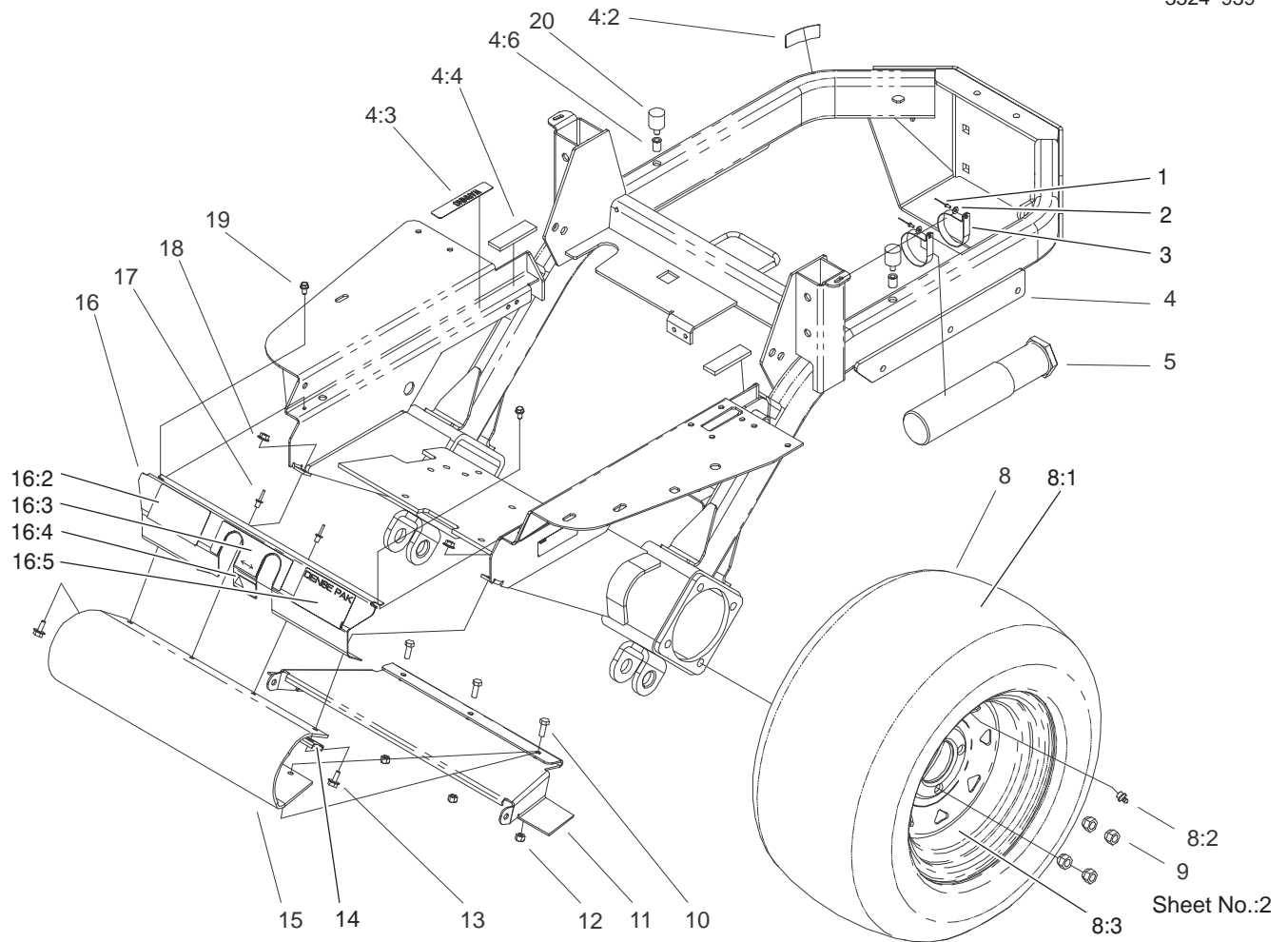
Contents

Description	Page	Description	Page
Traction Frame Assembly	3	Pinion Assembly No. 100-7755	26
Tail Wheel and Bumper Assembly	4	Lefthand Shaft Service Assembly	
Engine and Fuel Assembly	5	No. 100-7754	27
Rear Hydraulic Assembly	6	Righthand Shaft Service Assembly	
Front Hydraulic Assembly	7	No. 104-2427	28
Front Electrical Assembly	8	Electric Schematic	29
Rear Electrical Assembly	9	Hydraulic Schematic	30
Parking Brake Assembly	10	Crankshaft (Kohler CH25S PS68656)	31
Steering Control Assembly	11	Crankcase (Kohler CH25S PS68656)	32
Seat Assembly	12	Oil Pan / Lubrication (Kohler CH25S PS68656)	33
Exhaust Assembly	13	Head / Valve / Breather (Kohler CH25S PS68656) ...	
PTO and Hydro Drive Assembly	14	34	
Traction Unit Gearbox Assembly No. 104-2433	15	Ignition / Electrical (Kohler CH25S PS68656) ..	35
Drive Shaft Assembly No. 94-4722	16	Blower Housing & Baffles	
Carrier Frame Assembly	17	(Kohler CH25S PS68656)	36
Deck Assembly	19	Starter System (Kohler CH25S PS68656)	37
Plenum Assembly	20	Fuel System (Kohler CH25S PS68656)	38
Blower Assembly	21	Fuel System – Continued	
Air Cleaner and Bagger Frame Assembly	22	(Kohler CH25S PS68656)	39
Bagger Assembly	23	Engine Controls (Kohler CH25S PS68656)	40
Gearbox Kit Assembly	24	Air Intake / Filtration (Kohler CH25S PS68656)	41
Gearbox Assembly	25	Exhaust (Kohler CH25S PS68656)	42

Part Description Abbreviations

Part descriptions in this catalog may include the following abbreviations.

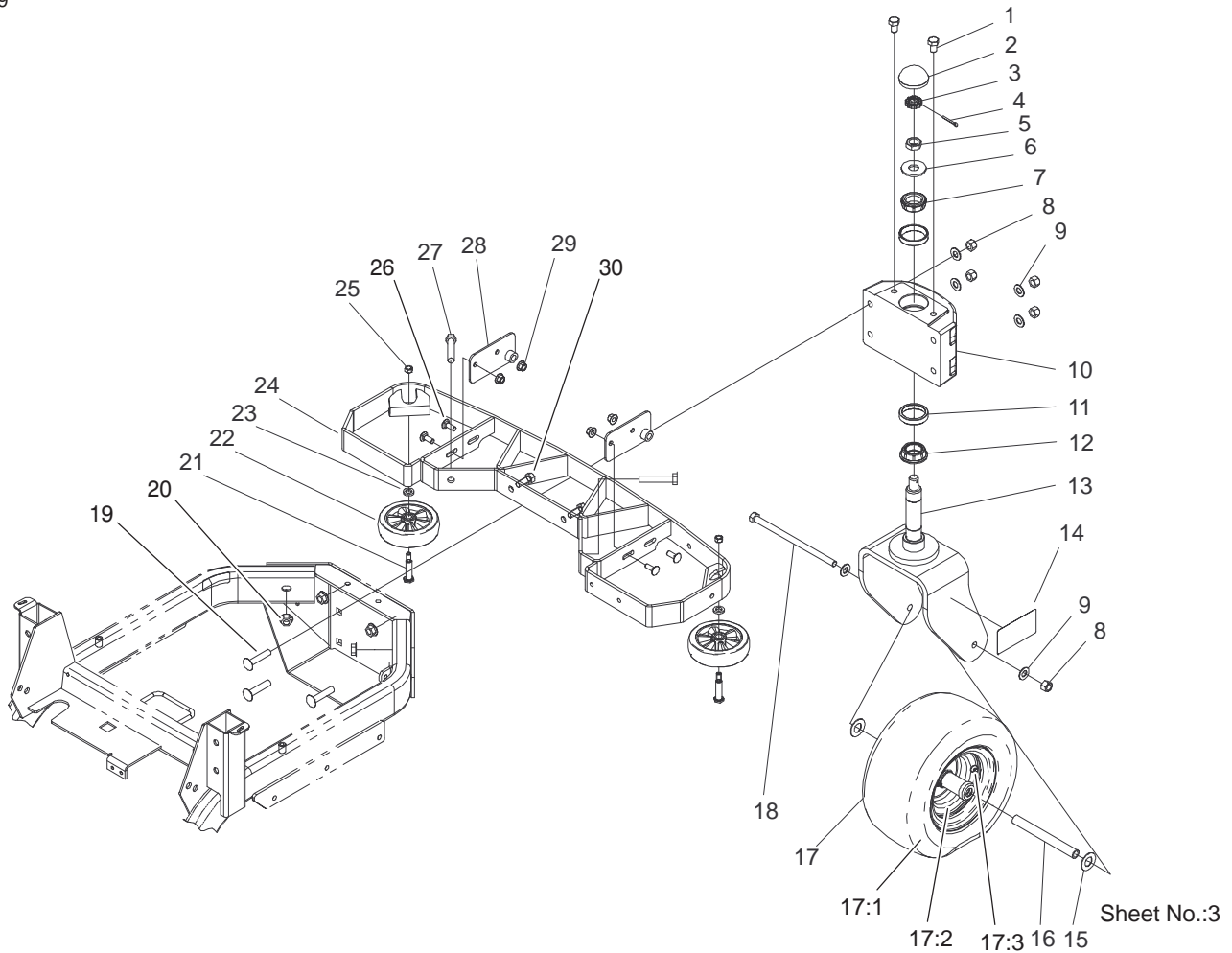
Abbreviation	Meaning	Abbreviation	Meaning
AR	as required	INC	incorporated
ASM	assembly	LH	left hand
CARR	carriage	NI	nylon insert
DEG	degrees	PPH	Phillips pan head
FH	flat head	PTH	Phillips truss head
GA	gauge	PTO	power take off
HF	hex flange	RH	right hand
HH	hex head	SFH	slotted fillister head
HHF	hex head flange	SHH	slotted hex head
HLH	hex lag head	SQH	square head
HJ	hex jam	SHWH	slotted hex washer head
HOC	height-of-cut	SPH	slotted pan head
HS	hex socket	SRH	slotted round head
HSBH	hex socket button head	STD	standard
HSFH	hex socket flat head	TAP	self tapping
HSH	hex socket head	TTH	Torx truss head
HWH	hex washer head	WH	wing head
HWHTF	hex washer head thread forming		



Traction Frame Assembly

Ref. No.	Part No.	Qty.	Description
1	3269-8	2	Rivet
2	3256-21	2	Washer-Flat
3	2412-120	2	R-Clamp
4	94-9598	1	Frame ASM w/ Decals
4:2	93-9198	1	Decal - Hot Surface
4:3	98-4361	1	Decal - Warning
4:4	52-5260	2	Rubber Pad
4:6	32148-8	2	Insert-Threaded
5	74-0720	1	Tube-Manual
8	94-9381	2	Tire And Wheel ASM
8:1	94-9388	1	Tire
8:2	232-27	1	Stem-Valve
8:3	94-9385	1	Wheel
9	242-50	8	Nut - Lug
10	322-4	3	Screw-HH
11	100-9614-01	1	Cover - Driveshaft
12	3296-29	3	Nut-Lock
13	3234-4	2	Screw-HHF
14	100-9620-03	1	Bracket - Guard
15	100-9619	1	Guard - Footrest
16	104-2401	1	Cover Plate ASM w/ Decals
16:2	100-7790	1	Decal - Z355
16:3	98-1313	1	Decal - Operation
16:4	98-4387	1	Decal-Protection, Ear
16:5	104-5106	1	Decal - Dense Pak

Ref. No.	Part No.	Qty.	Description
17	3290-412	2	Rivet
18	32128-33	2	Nut-HF
19	32144-4	2	Screw-HH
20	104-2442	2	Bumper - Rubber

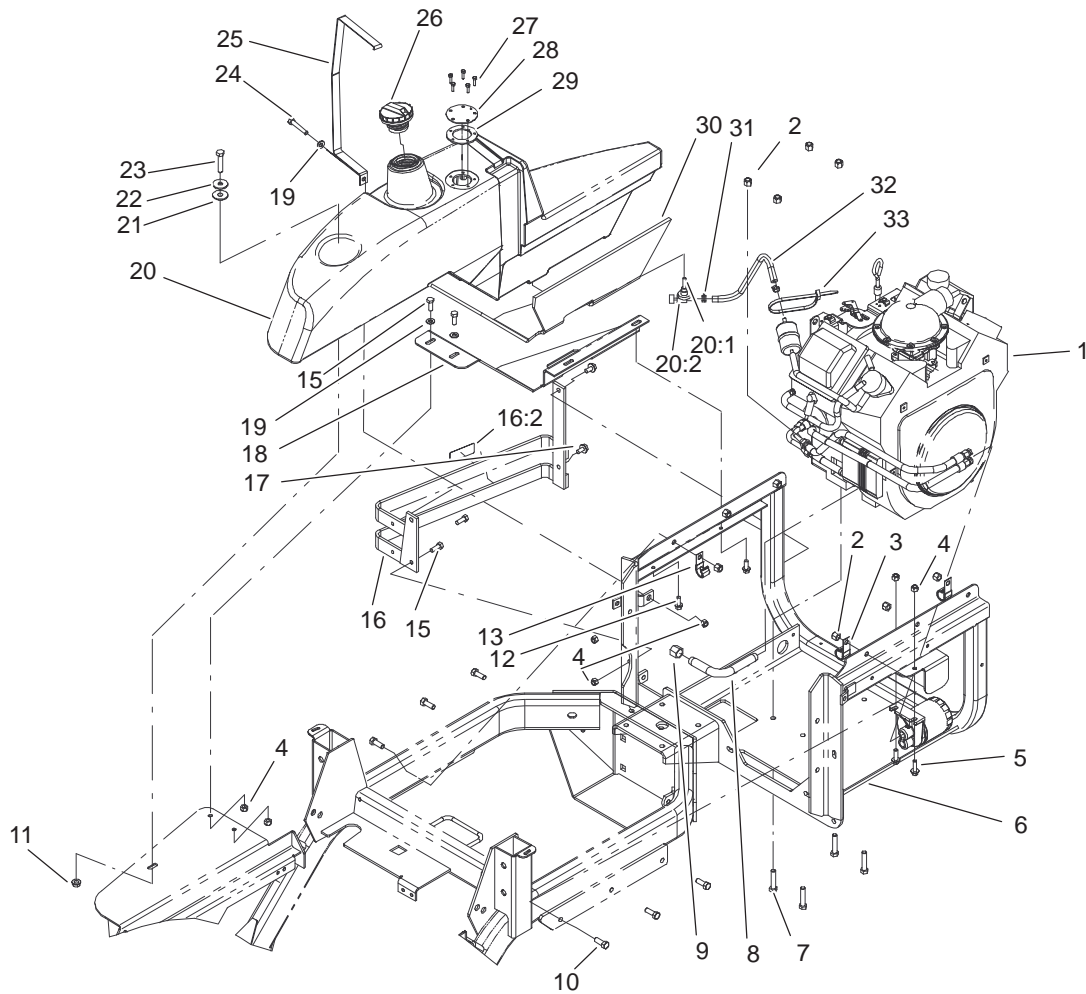


Tail Wheel and Bumper Assembly

Ref. No.	Part No.	Qty.	Description
1	325-2	2	Screw-HH
2	94-4665	1	Dustcap
3	93-0307	1	Nut Retainer-Lock
4	3272-17	1	Pin-Cotter
5	3220-7	1	Nut-Jam
6	3256-8	1	Washer-Flat
7	254-62	1	Roller Brg Cone
8	3296-23	5	Nut-Lock, NI
9	3256-26	6	Washer-Flat
10	94-9489-01	1	Housing - Spindle
11	254-61	2	Cup-Bearing
12	254-70	1	Cone-Bearing
13	94-4647-01	1	Caster Fork ASM
14	100-7790	1	Decal - Z355
15	3256-39	2	Washer-Flat
16	94-4753	1	Tube - Spacer,Castor
17	98-4352	1	Tire And Wheel ASM
17:1	94-9384	1	Tire
17:2	98-4351	1	Wheel ASM
*17:2:1	99-0246	4	Washer-Stop
*17:2:2	99-0247	2	Bearing-Roller
*17:2:3	99-0248	2	Seal-Felt
*17:2:4	99-0249	2	Cap-End
17:3	232-27	1	Stem-Valve
18	325-24	1	Screw-HH
19	3233-27	4	Screw-CARR

Ref. No.	Part No.	Qty.	Description
20	32128-23	4	Nut-HF
21	5188	2	Bolt-Shoulder
22	109375	2	Wheel ASM
23	9202424	2	Spacer
24	104-2434-03	1	Bumper ASM
25	32153-2	2	Nut-Lock
26	3231-2	4	Screw-CARR
27	325-11	2	Screw-HH
28	104-2430-03	2	Pivot ASM
29	32128-21	4	Nut-HF
30	325-5	2	Screw-HH

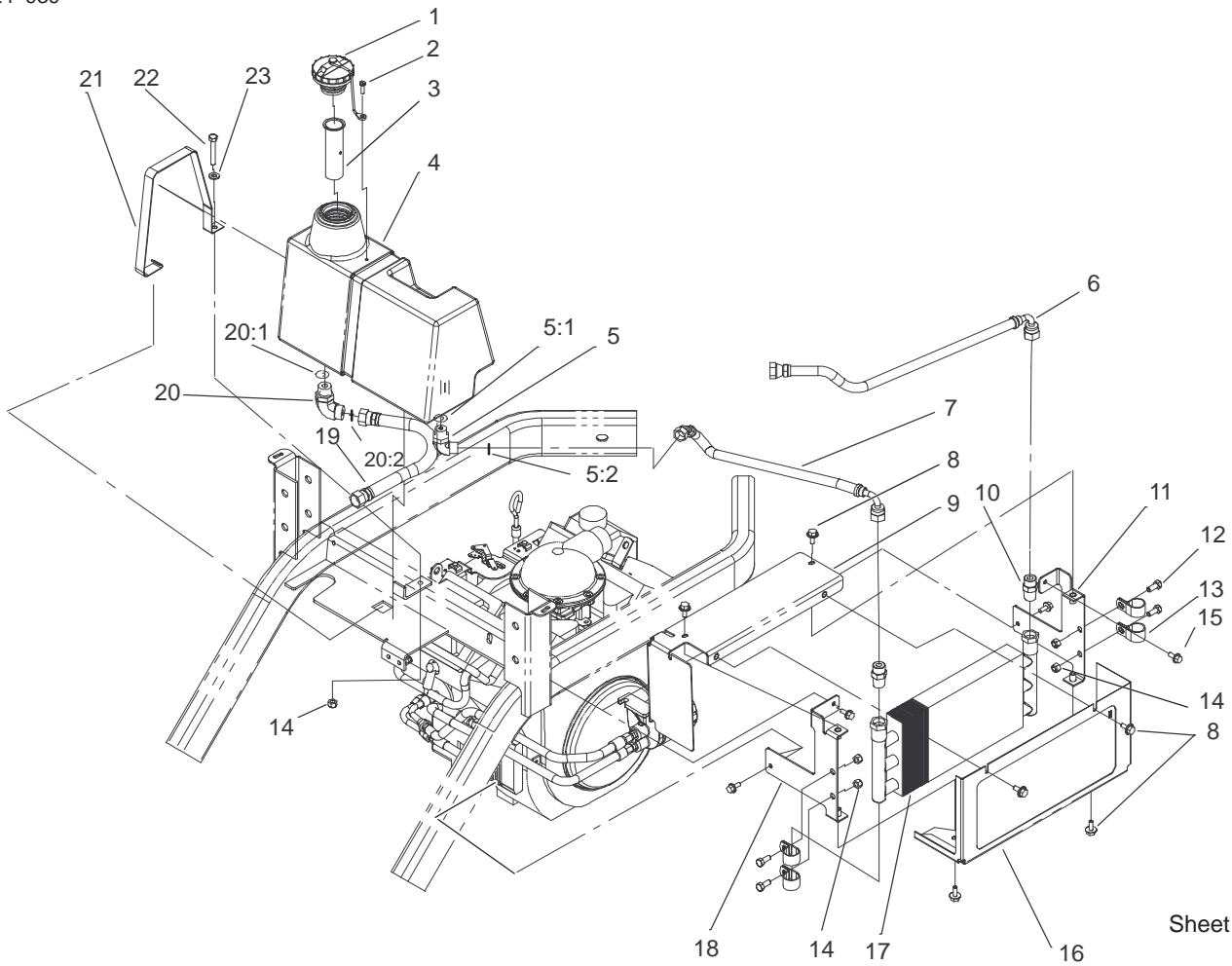
* Not illustrated



Sheet No.:4

Engine and Fuel Assembly

Ref. No.	Part No.	Qty.	Description	Ref. No.	Part No.	Qty.	Description
1		1	Engine-Kohler, Ch25s Ps-68656	22	63-8410	1	Washer
2	3296-39	10	Nut-Lock, NI	23	323-9	1	Screw-HH
3	94-9580	2	Clamp - J	24	322-10	1	Screw-HH
4	3296-29	7	Nut-Lock	25	94-4799-03	1	Strap - Fuel Tank
5	3234-17	2	Screw-HHF	26	93-3101	1	Cap-Fuel
6	94-4618-03	1	Engine Support ASM	27	3250-29	5	Screw-PPH
7	323-9	4	Screw-HH	28	94-9597	1	Cover-Fuel Tank Opening
8	94-9499	1	Tube - Oil Drain	29	62-7650	1	Gasket
9	288-4	1	Pipe Cap	30	98-1319	1	Foam - Fuel Tank
10	323-6	6	Screw-HH	31	2412-98	2	Clamp
11	3290-357	1	Nut-Flange, Lock	32	98-0976	1	Hose - Gas
12	32144-11	2	Screw-TAP	33	3290-378	2	Tie-Cable
13	8830	1	Clip				
15	322-4	4	Screw-HH				
16	98-1995	1	Bumper ASM w/ Decal				
16:2	93-9198	1	Decal - Hot Surface				
17	32144-14	2	Screw-HWH				
18	94-4798-01	1	Plate - Tank Support				
19	3256-23	3	Washer-Flat				
20	94-9553	1	Assembly - Fuel Tank				
20:1	104047	1	Bushing				
20:2	104048	1	Valve-Fuel				
21	240-11	1	Grommet-Mount, Tank				



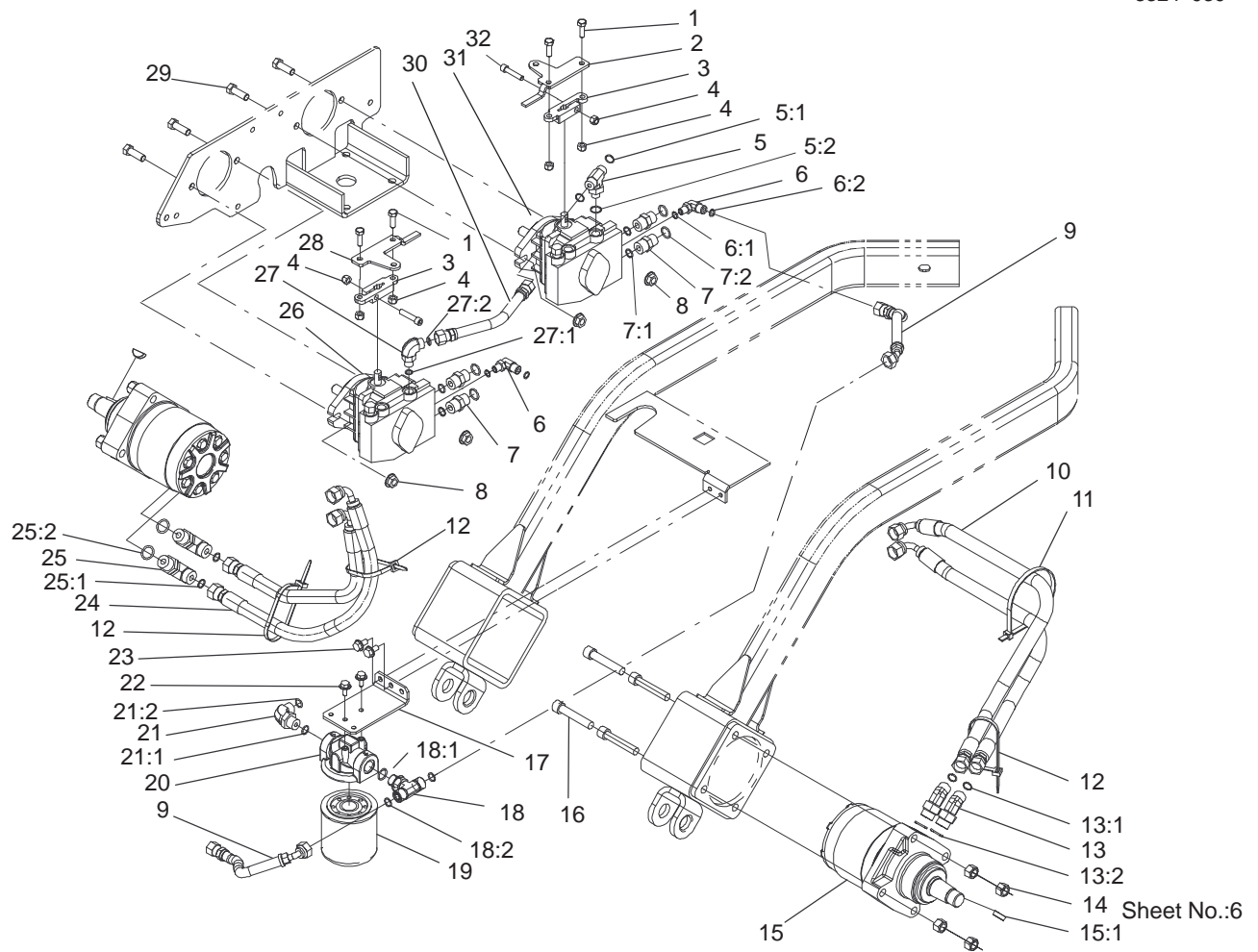
Sheet No.:5

Rear Hydraulic Assembly

Ref. No.	Part No.	Qty.	Description
1	93-4365	1	Cap-Oil
2	3290-126	1	Screw
3	92-1705	1	Filter-Screen
4	94-4700	1	Tank-Hydraulic
5	340-98	1	Fitting-90°
5:1	237-79	1	O-Ring
5:2	237-30	1	O-Ring
6	94-4709	1	Hydraulic Hose ASM
7	94-4713	1	Hydraulic Hose ASM
8	3234-4	6	Screw-HHF
9	98-1969	1	Cooler Shroud ASM
10	93-5107	2	Fitting - Adapter
11	98-1972	1	Rear Cooler Bracket ASM
12	322-3	4	Screw-HH
13	2412-39	4	Clamp-R
14	3296-29	5	Nut-Lock
15	32144-10	2	Screw-HWH
16	94-9556-03	1	Cooler Shroud ASM
17	24-0760	1	Cooler ASM
18	98-1970	1	Front Cooler Bracket ASM
19	94-4710	1	Hydraulic Hose ASM
20	340-105	1	Fitting-90°
20:1	237-80	1	O-Ring
20:2	237-30	1	O-Ring

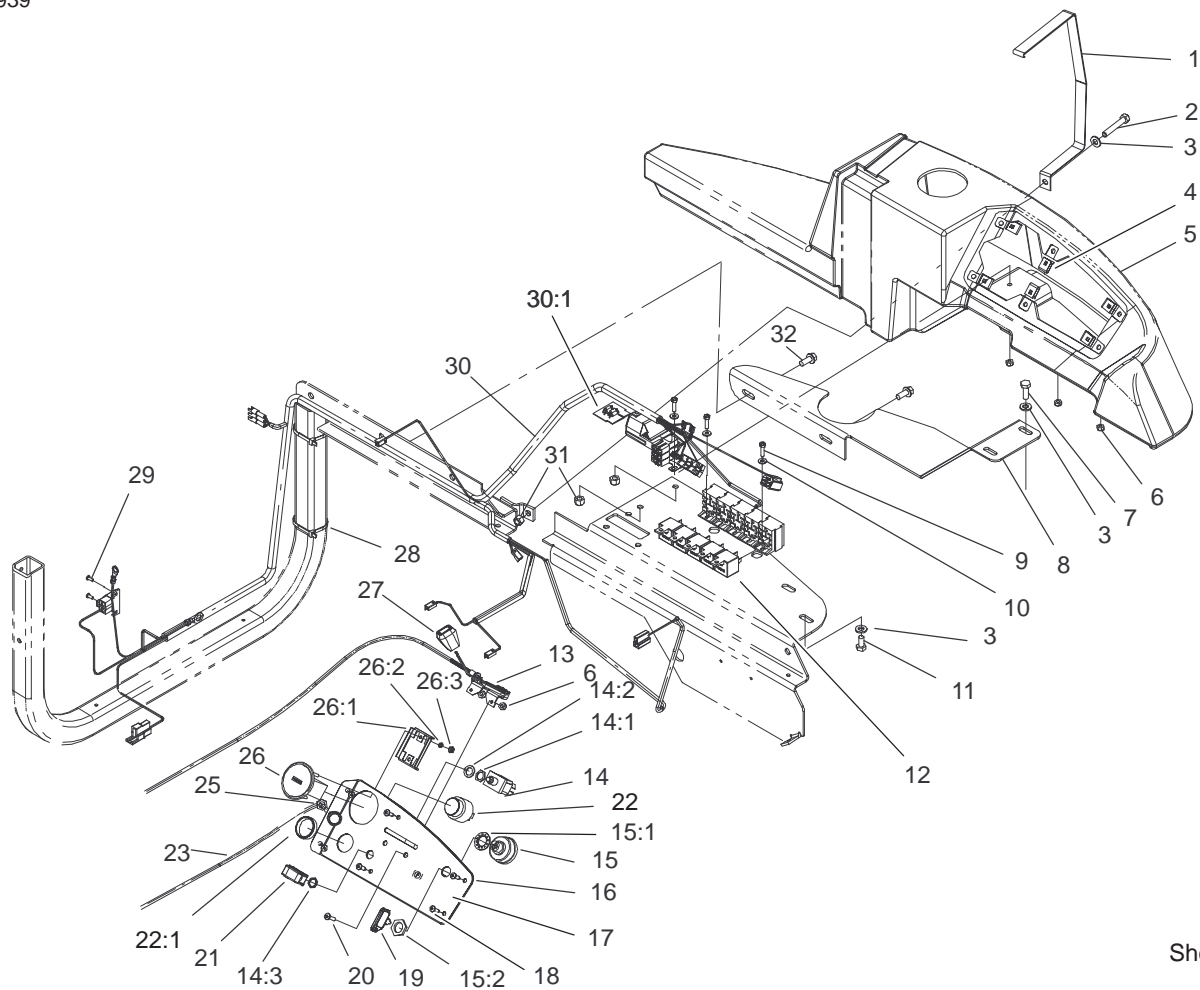
Ref. No.	Part No.	Qty.	Description
21	94-4642-03	1	Strap - Hydraulic Tank
22	322-10	1	Screw-HH
23	3256-23	1	Washer-Flat

PROTOTYPE



Front Hydraulic Assembly

Ref. No.	Part No.	Qty.	Description	Ref. No.	Part No.	Qty.	Description
1	322-5	4	Screw-HH	17	94-9525-03	1	Angle-Mount, Hyd Filter
2	94-4702-03	1	Plate - Control, Left	18	340-157	1	Fitting-Hydraulic
3	94-4678	2	Arm - Pump Control	18:1	237-79	1	O-Ring
4	3296-29	6	Nut-Lock	18:2	237-30	2	O-Ring
5	340-94	1	Adapter	19	67-8110	1	Cartridge - Filter, Oil
5:1	237-22	2	O-Ring	20	86-9080	1	Filter Head
5:2	237-42	1	O-Ring	21	340-98	1	Fitting-90°
6	340-97	2	Fitting-90°	21:1	237-79	1	O-Ring
6:1	237-22	1	O-Ring	21:2	237-30	1	O-Ring
6:2	237-78	1	O-Ring	22	3234-4	2	Screw-HHF
7	340-4	4	Adapter	23	32144-14	2	Screw-HWH
7:1	237-30	1	O-Ring	24	94-4705	2	Hydraulic Hose ASM
7:2	237-79	1	O-Ring	25	340-105	2	Fitting-90°
8	32128-42	4	Nut-HF	25:1	237-80	1	O-Ring
9	98-4384	2	Hydraulic Hose ASM	25:2	237-30	1	O-Ring
10	94-4714	2	Hydraulic Hose ASM	26	98-4375	1	Pump - Hydraulic
11	3334-945	1	Tie-Cable	27	340-77	1	Fitting-90°
12	3290-378	3	Tie-Cable	27:1	237-22	1	O-Ring
13	340-89	2	Fitting-45°	27:2	237-42	1	O-Ring
13:1	237-30	1	O-Ring	28	94-4701-03	1	Plate - Control, Right
13:2	237-80	1	O-Ring	29	324-5	4	Screw-HH
14	3296-23	8	Nut-Lock, NI	30	94-4712	1	Hydraulic Hose ASM
15	94-4640	2	Motor - Hydraulic Wheel	31	98-4374	1	Pump - Hydraulic
15:1	3257-42	1	Key-Woodruff	32	3274-83	2	Screw-HSH
16	3274-93	8	Screw-HSH				

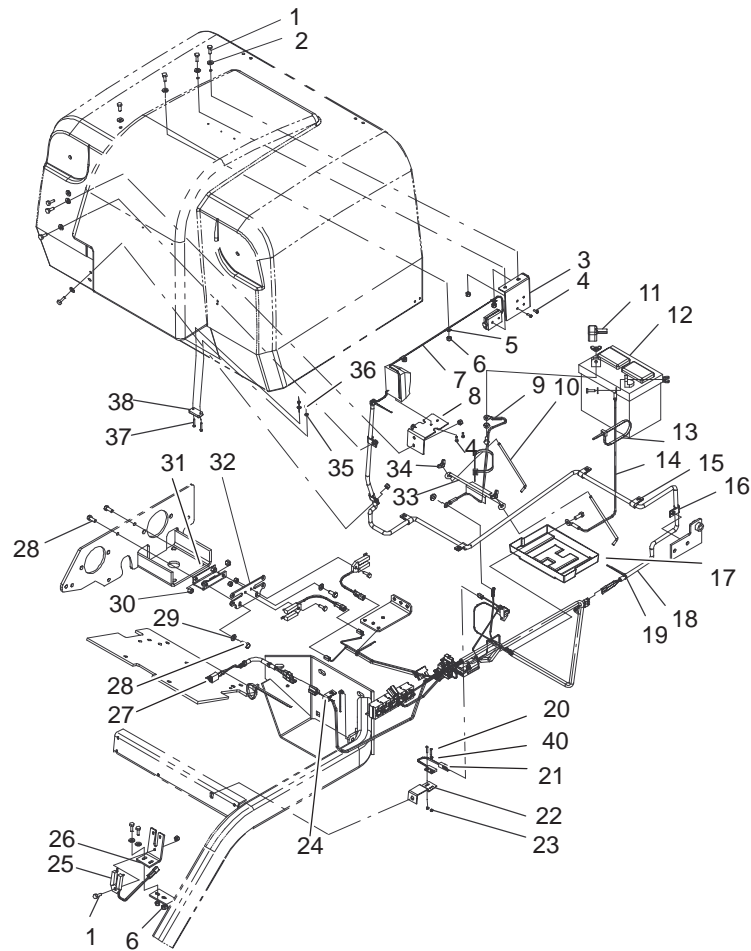


Sheet No.:7

Front Electrical Assembly

Ref. No.	Part No.	Qty.	Description
1	94-9488-03	1	Strap – Console
2	322-10	1	Screw-HH
3	3256-23	5	Washer-Flat
4	95-1962	6	Clip – Tinnerman
5	104-0365	1	Console
6	3296-2	5	Nut-Lock
7	322-4	2	Screw-HH
8	100-7792-01	1	Plate – Support, Console
9	32105-13	3	Screw-Shh
10	3256-14	3	Washer-Flat
11	322-2	2	Screw-HH
12	116397	5	Relay
13	98-4350	1	Throttle Control ASM
14	92-9811	1	Switch – Toggle, Sealed
14:1	105805	1	Nut-Hex Special
14:2	102950	1	Washer Tab
14:3	113179	1	Nut-Hex
15	111216	1	Ignition Switch ASM
15:1	9201604	1	Lockwasher
15:2	101884	1	Nut
16	98-1999-03	1	Panel – Instrument
17	98-4357	1	Decal – Instrument
18	32144-124	6	Screw – PPH, Type Ab

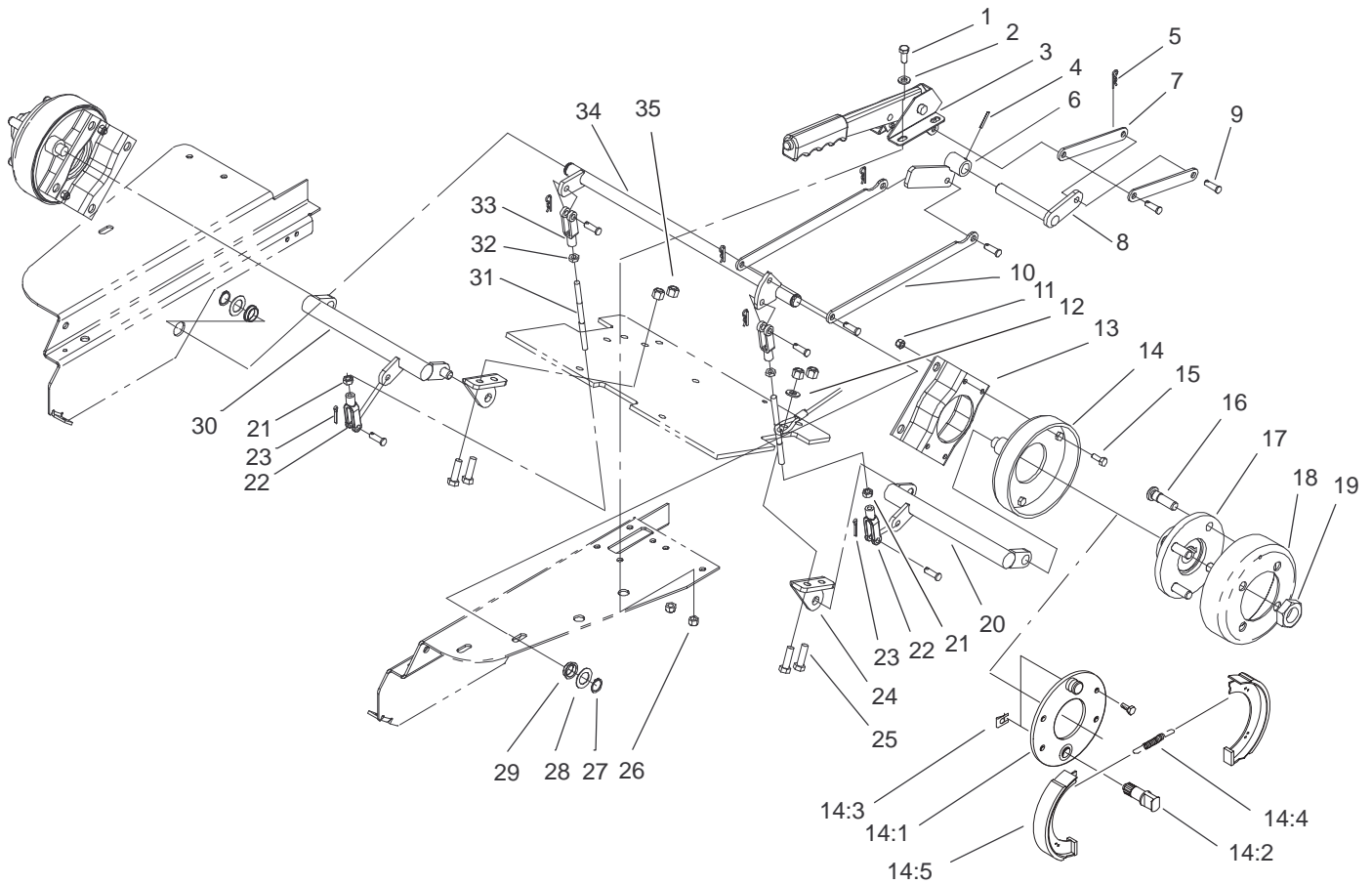
Ref. No.	Part No.	Qty.	Description
19	62-7770	2	Key-Ignition
20	3250-13	2	Screw-PPH
21	113050	1	Cover-PTO Switch
22	80-9330	1	Alarm – Audio
22:1	104-5107	1	Nut-Plastic, Knurled
23	98-1956	1	Control – Choke
25	3220-3	1	Nut-Jam
26	78-0020	1	Hour-Meter
26:1	78-3320	1	Clamp-Hour Meter
26:2	3255-25	2	Washer-Lock
26:3	3217-27	2	Nut-Hex
27	66-0120	1	Knob
28	3290-379	2	Tie-Cable
29	32144-74	2	Screw-TAP
30	98-3317	1	Harness
30:1	92-3188	1	Diode-Board, Circuit
31	3296-29	3	Nut-Lock
32	32144-11	2	Screw-TAP



Sheet No.:8

Rear Electrical Assembly

Ref. No.	Part No.	Qty.	Description	Ref. No.	Part No.	Qty.	Description
1	321-4	15	Screw-HH	25	98-1324	3	Switch - Interrupter
2	3256-22	12	Washer-Flat	26	94-4696	1	Angle - Mount, Switch
3	100-2440-03	1	Bracket - Emitter	27	98-4373	1	Harness - Seat
4	3250-19	4	Screw-PPH				Adapter
5	2412-127	3	Clamp-R	28	322-3	4	Screw-HH
6	3296-42	13	Nut-Lock	29	3256-23	2	Washer-Flat
7	98-2367	1	Module - Obstruction Det	30	3296-29	4	Nut-Lock
8	98-3000-03	1	Bracket - Receiver	31	94-4797-03	1	Channel-Mount, Switch
9	28-3893	1	Wire ASM	32	94-9460	1	Plate - Switch Mount
10	94-6146	2	Retainer - Battery	33	113010	1	Battery Hold Down
11	28-8080	1	Boot-Terminal	34	32103-22	4	Nut-Wing
12	94-1867	1	Battery	35	3256-12	2	Washer-Flat
13	3290-378	3	Tie-Cable	36	3296-9	2	Nut-Lock NI
14	92-6287	1	Wire ASM - Negative	37	3290-124	2	Screw-HH
15	2412-93	6	R-Clamp	38	98-3006	1	Actuator
16	2412-138	1	R-Clamp	40	104-5112	2	Washer-Flat, #4
17	106948	1	Tray-Battery				
18	98-3009	1	Conduit - Convolved				
19	3290-381	4	Tie - Cable				
20	32105-28	2	Hex Head Machine				
21	95-7669	1	Switch - Reed, Magnetic				
22	104-2443-03	1	Bracket - Switch				
23	3296-52	2	Nut-Lock NI				
24	2412-93	1	R-Clamp				

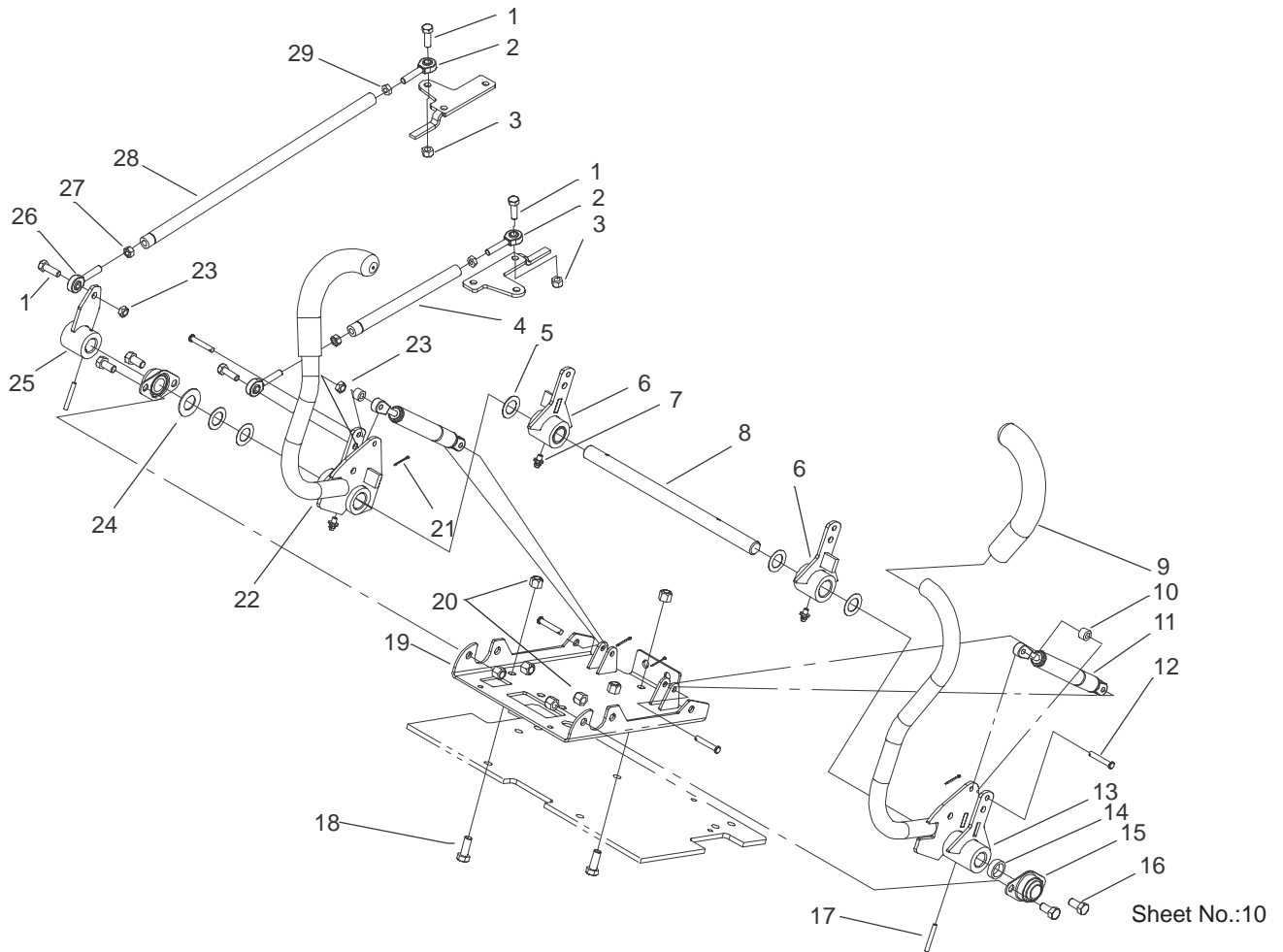


Sheet No.:9

Parking Brake Assembly

Ref. No.	Part No.	Qty.	Description
1	322-3	4	Screw-HH
2	3256-23	4	Washer-Flat
3	94-4602	1	Lever - Brake
4	32121-93	1	Spiral Pin
5	3290-307	6	Pin-Hair
6	98-1994	1	Brake Hub ASM
7	98-1992	2	Link - Brake
8	98-1990	1	Transfer Shaft ASM
9	283-1	8	Pin-Yoke
10	98-1991	2	Link - Connect
11	3296-42	8	Nut-Lock
12	3256-24	1	Washer-Flat
13	84-2000-03	2	Bracket-Brake
14	71-1500	2	Brake ASM
14:1	70-9870	1	Plate-Backing
14:2	70-9860	1	Cam-Brake
14:3	70-9850	1	Clip-Retaining
14:4	70-9880	2	Spring-Return
14:5	70-9840	2	Shoe-Brake
15	321-4	8	Screw-HH
16	85-6540	8	Stud-Drive
17	10-6870-03	2	Hub-Wheel
18	10-6850	2	Drum-Brake
19	26-3790	2	Nut-Lock
20	98-1997	1	LH Brake Lever ASM
21	3220-20	2	Nut-Jam

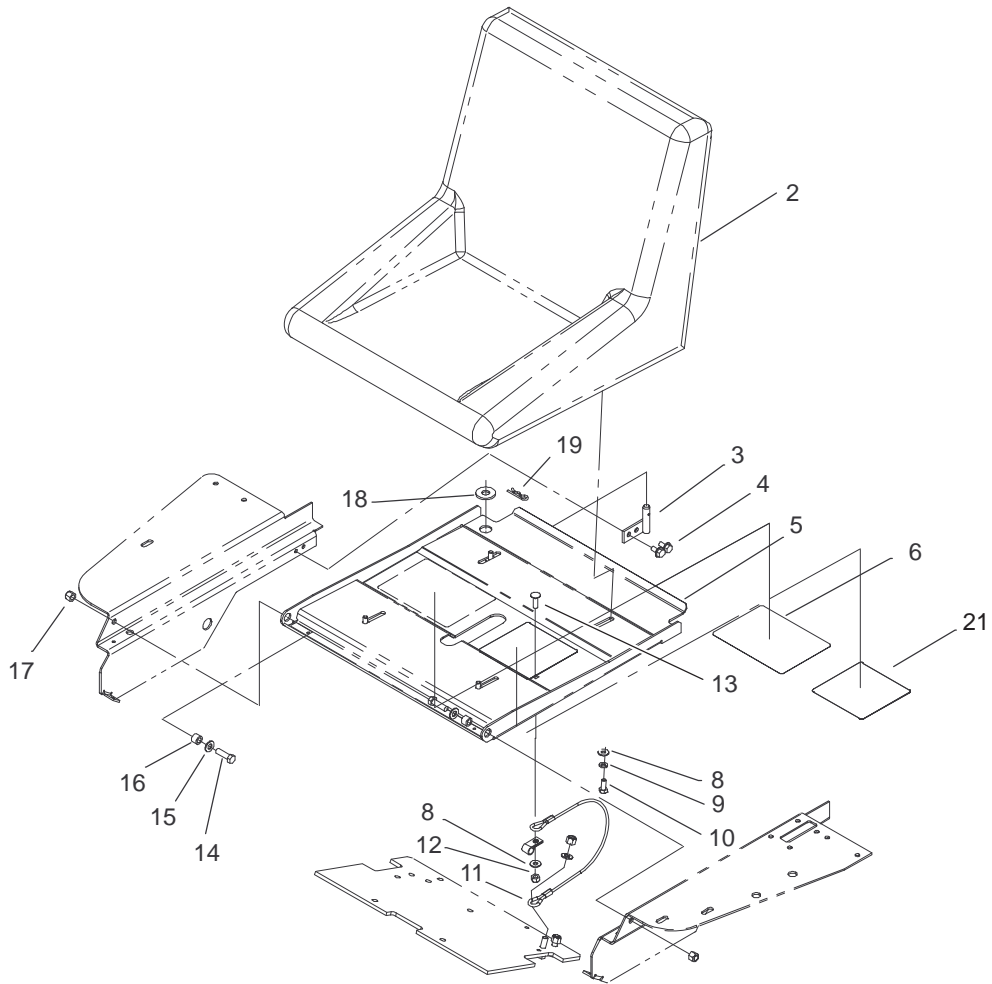
Ref. No.	Part No.	Qty.	Description
22	98-4367	2	Clevis - Adjustable
23	3272-10	2	Pin-Cotter
24	94-9573-01	2	Mount-Lever, Brake RH
25	323-7	4	Screw-HH
26	3296-29	4	Nut-Lock
27	32120-72	2	Ring-Snap
28	9202574	2	Washer-Flat
29	106950	2	Bushing
30	98-1998	1	RH Brake Lever ASM
31	98-1996	2	Rod - Brake
32	3220-2	2	Nut-HJ
33	282-2	2	Yoke
34	98-1988	1	Torsion Shaft ASM
35	3296-39	4	Nut-Lock, NI



Sheet No.:10

Steering Control Assembly

Ref. No.	Part No.	Qty.	Description	Ref. No.	Part No.	Qty.	Description
1	322-5	4	Screw-HH	24	3256-39	1	Washer-Flat
2	2411-52	2	Bearing - Rod End, RH	25	94-9594-03	1	Control Hub ASM
3	3296-29	2	Nut-Lock	26	2411-53	2	Bearing - Rod End, RH
4	94-4717	1	Rod - Control, RH	27	3220-20	2	Nut-Jam
5	9202574	5	Washer-Flat	28	94-4718	1	Rod - Control, LH
6	94-9552	2	Center Control ASM	29	3220-2	2	Nut-HJ
7	302-5	3	Fitting - Grease				
8	94-9515	1	Shaft - Control				
9	94-9490	2	Grip - Cushion				
10	94-9593	2	Spacer - Damper				
11	98-4397	2	Damper - Bidirectional				
12	283-66	4	Pin-Clevis				
13	94-9517-03	1	LH Control Handle ASM				
14	94-9524	1	Spacer - Control				
15	27-2320	2	Bearing				
16	323-4	4	Screw-HH				
17	32121-103	2	Pin-Spring				
18	323-6	3	Screw-HH				
19	94-9591-03	1	Channel Mount ASM				
20	3296-39	7	Nut-Lock, NI				
21	3272-4	4	Pin-Cotter				
22	94-9551	1	RH Control Handle ASM				
23	3296-47	2	Nut-Lock, NI				

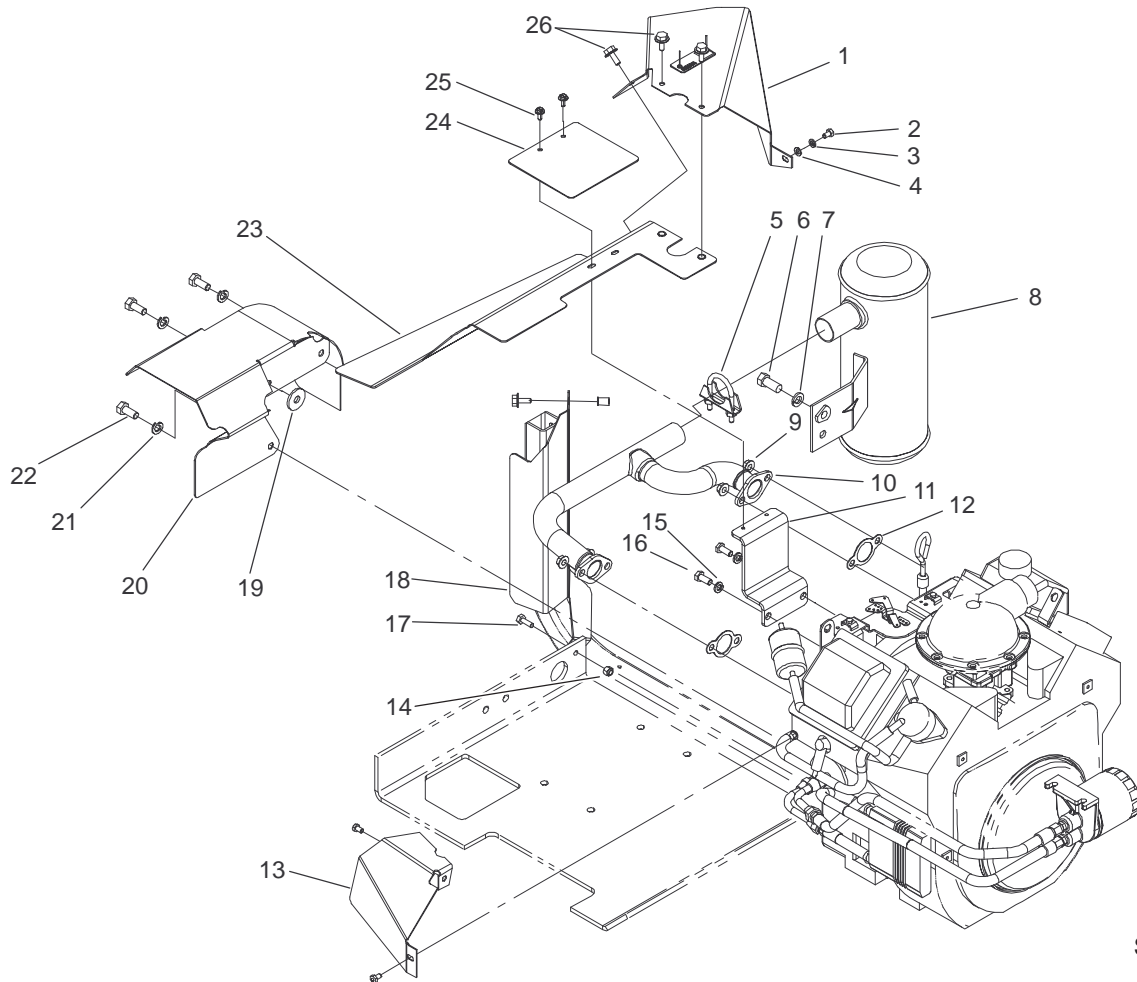


Sheet No.:11

Seat Assembly

Ref. No.	Part No.	Qty.	Description	Ref. No.	Part No.	Qty.	Description
2	92-6280	1	Seat ASM				
3	98-1985	1	Latch ASM				
4	32144-14	2	Screw-HWH				
5	94-9529-01	1	Seat Plate ASM				
6	104-0390	1	Decal - Instructional				
8	3256-2	5	Washer-Flat				
9	3253-4	4	Washer				
10	322-3	4	Screw-HH				
11	98-4371	1	Cable - Seat				
12	3296-29	1	Nut-Lock				
13	3230-2	1	Screw-CARR				
14	323-7	2	Screw-HH				
15	3256-24	2	Washer-Flat				
16	52-2480	2	Spacer-Wheel				
17	3296-39	2	Nut-Lock, NI				
18	3256-6	1	Washer-Flat				
19	3290-355	1	Pin-Hair				
21	104-0391	1	Decal - Service, Ofz				

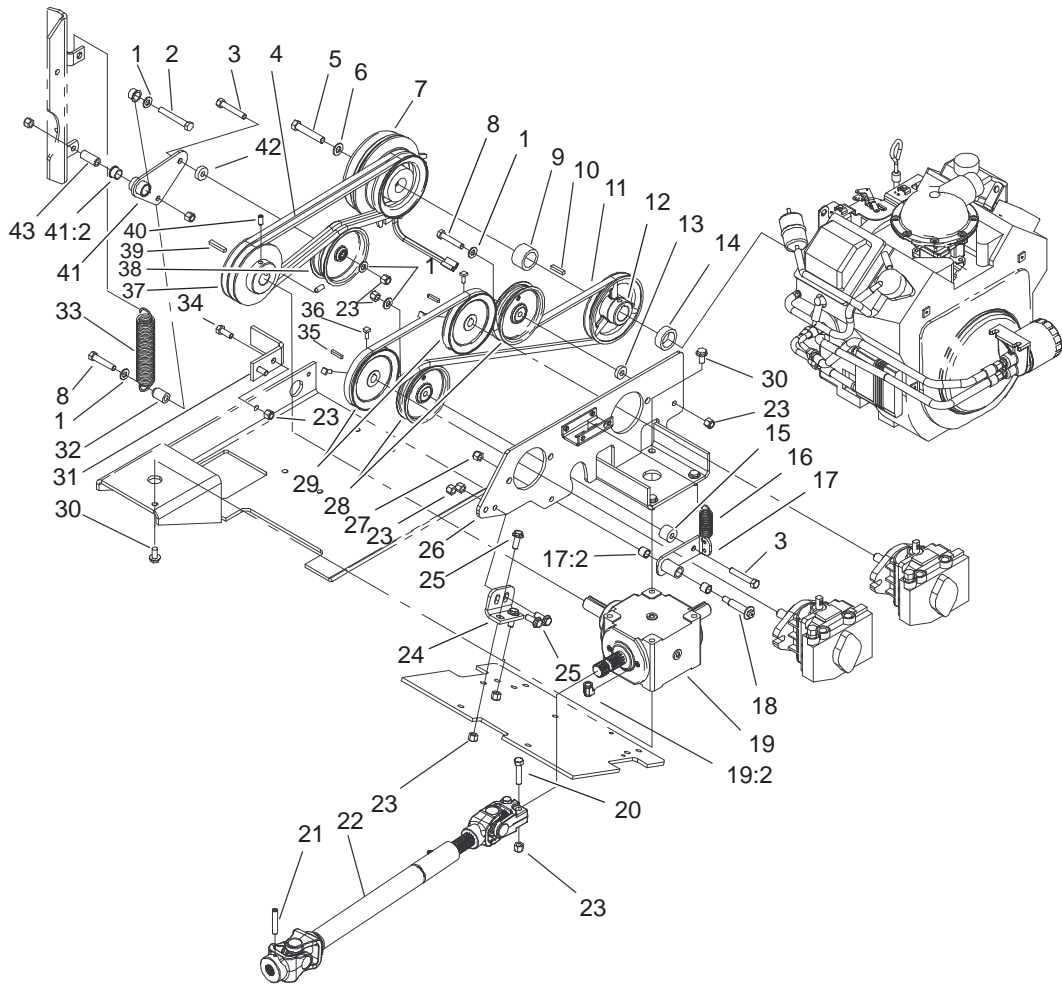
PROTOTYPE



Sheet No.:12

Exhaust Assembly

Ref. No.	Part No.	Qty.	Description	Ref. No.	Part No.	Qty.	Description
1	98-1968	1	Rear Heat Baffle ASM	25	12-5450	2	Screw
2	42-9430	1	Bolt/Washer	26	3234-4	4	Screw-HHF
3	48-8020	1	Washer-Spring				
4	33093-00	1	Washer-Flat				
5	2112-11	1	Clamp-Muffer				
6	324-4	1	Screw-HH				
7	3253-6	1	Washer-Lock/Sp				
8	94-9495	1	Muffer				
9	92-6780	4	Nut-Hex Flange				
10	94-9494	1	Manifold				
11	94-9561	1	Bracket - Manifold Shield				
12	93-0350	2	Gasket - Exhaust				
13	98-1349	1	Baffle - Heat, Front				
14	3296-42	1	Nut-Lock				
15	42-9850	2	Washer-Lock, Spring				
16	33114-020	2	Screw-HH				
17	321-4	1	Screw-HH				
18	98-1329	1	Baffle - Heat, Middle				
19	2844	1	Washer				
20	98-1326	1	Baffle - Heat, Lower				
21	3253-5	3	Washer-Lock/Sp				
22	323-5	3	Screw-HH				
23	98-1967	1	ASM - Top Heat Baffle				
24	98-1979	1	Panel - Access, Baffle				

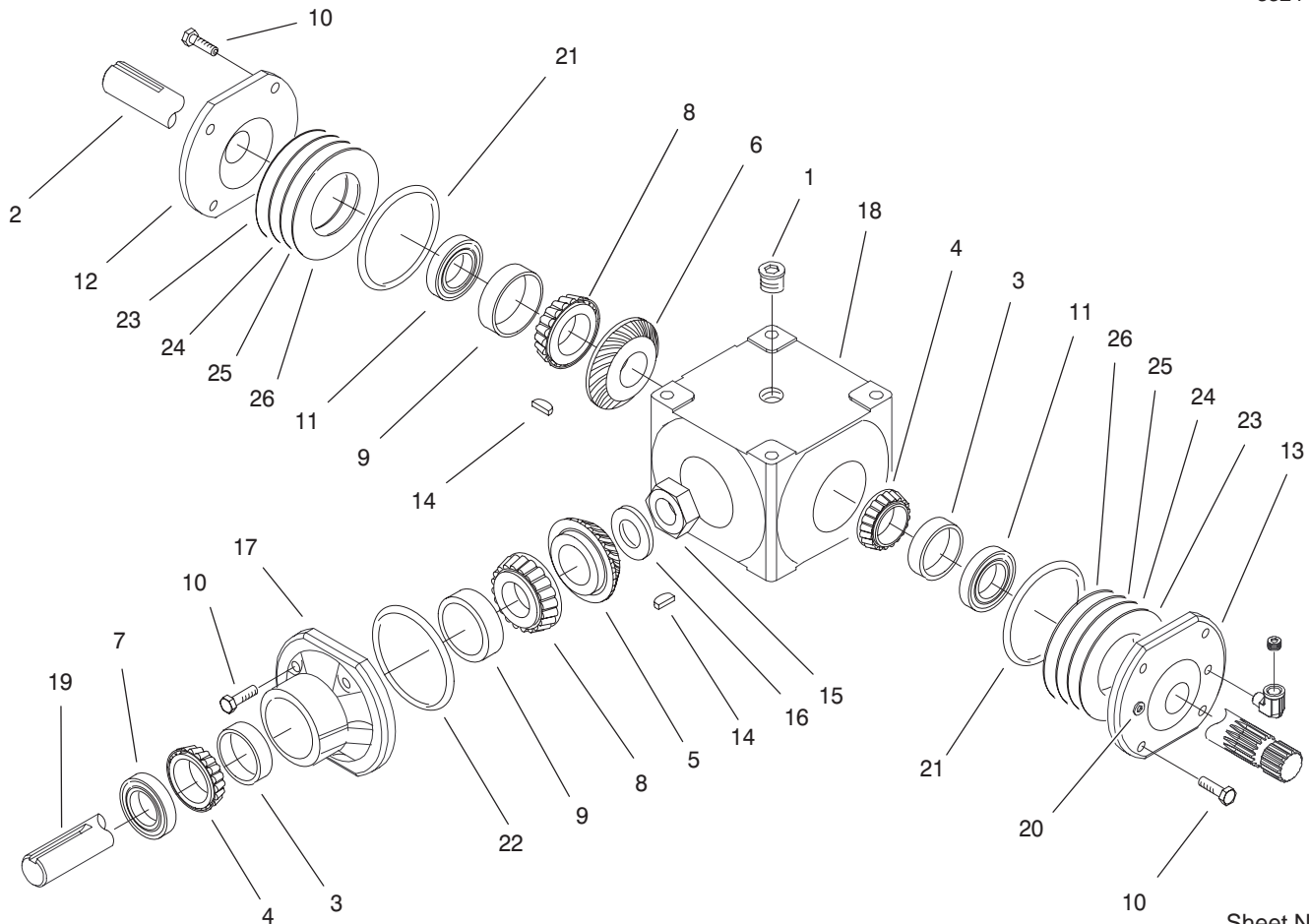


Sheet No.:13

PTO and Hydro Drive Assembly

Ref. No.	Part No.	Qty.	Description
1	3256-24	5	Washer-Flat
2	323-13	1	Screw-HH
3	323-11	2	Screw-HH
4	94-4608	1	V-Belt, Matched Pair
5	3212-10	1	Screw-HH
6	3256-25	1	Washer-Flat
7	94-4632	1	Clutch - Electromagnetic
8	323-10	2	Screw-HH
9	94-4689	1	Spacer - Shaft, Engine
10	5-0698	1	Key
11	94-4607	1	V-Belt
12	94-4628	1	Pulley - Engine
13	9202204	1	Washer
14	94-4688	1	Spacer - Shaft, Engine
15	94-4792	1	Spacer - Idler Arm
16	94-9599	1	Spring - Extension
17	95-1950	1	Idler Arm ASM w/ Bushings
17:2	256-154	2	Bushing
18	27-6230	1	Bolt-Wheel
19	104-2433	1	Gearbox ASM
19:1		1	Gearbox - PTO
19:2	2811-7	1	Elbow

Ref. No.	Part No.	Qty.	Description
20	323-19	2	Screw-HH
21	32121-48	1	Pin-Spring
22	94-4722	1	Shaft - Drive
23	3296-39	13	Nut-Lock, NI
24	94-4787-03	1	Mount - Plate, Pump
25	3234-11	4	Screw-HHF
26	94-4658-03	1	Pump Mount ASM
27	3296-6	1	Nut-Lock, NI
28	93-1622	2	Pulley-Idler
29	80-8170	2	Pulley - Pump, Traction
30	3234-1	8	Screw-HHF
31	98-1301-03	1	Stop - Clutch
32	95-1967	1	Spacer - Spring
33	88-6460	1	Spring - Extension
34	323-6	2	Screw-HH
35	80-6090	2	Key - Pump
36	3241-5	4	Screw-Set
37	94-4629	1	Pulley - Clutch
38	66-4210	1	Pulley-Idler
39	67-7490	1	Key
40	3246-6	2	Screw-Set, HSH
41	95-1968	1	Idler Arm ASM
41:2	109859	2	Bushing
42	94-4685	1	Spacer - Idler
43	114511	1	Spacer



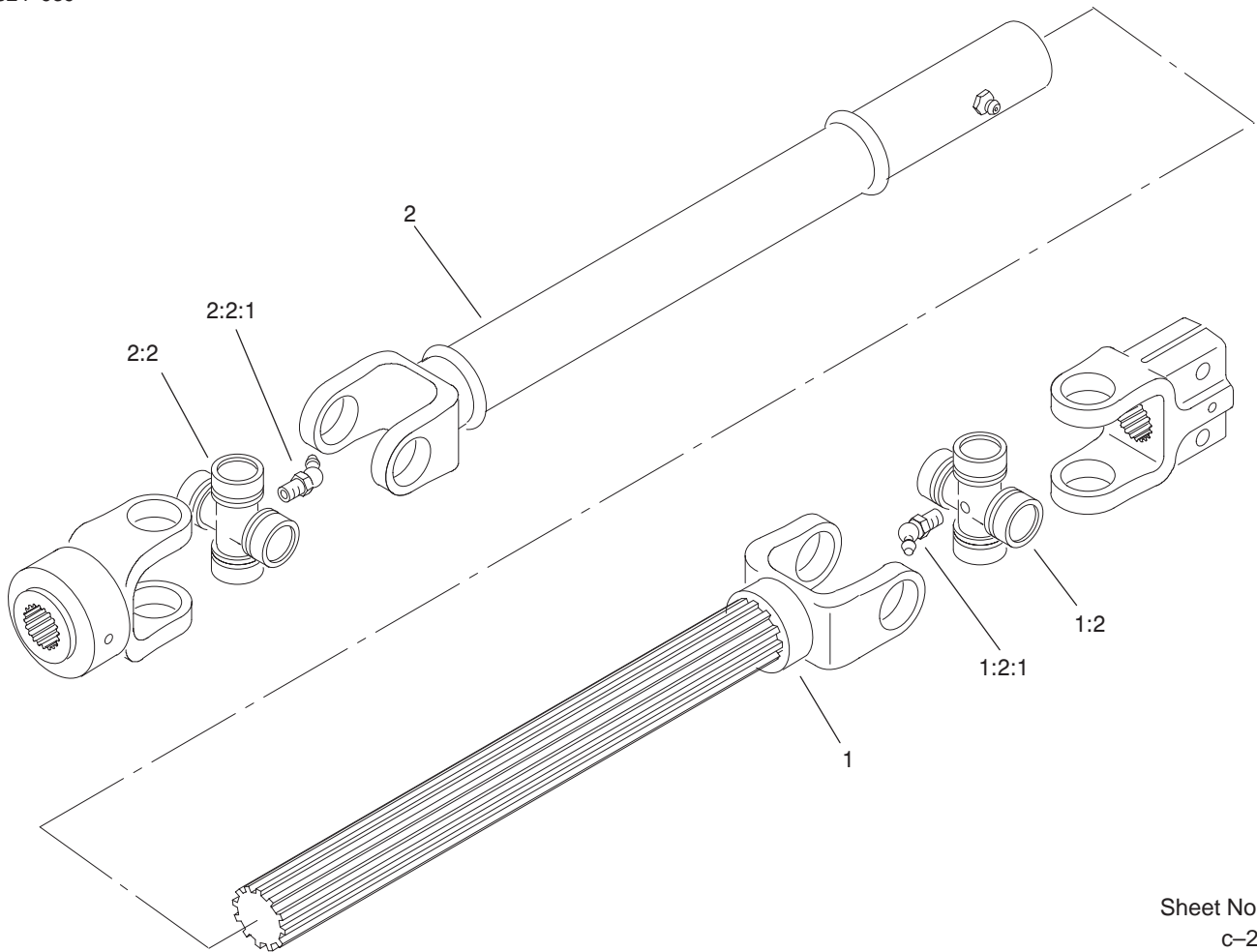
Sheet No.:A1
c-2886

Traction Unit Gearbox Assembly No. 104-2433

Ref. No.	Part No.	Qty.	Description
1	100-5812	3	Plug
2	104-2423	1	Shaft - Cross
3	100-4571	2	Cup - Bearing
4	100-4572	2	Cone - Bearing
5	100-5814	1	Gear - Spiral, RH
6	100-5815	1	Gear - Spiral, LH
7	100-4575	1	Seal
8	100-5816	2	Cone - Bearing
9	100-5817	2	Cup - Bearing
10	100-5818	12	Screw-HH
11	100-5819	2	Seal
12	100-5820	1	Cap - End
13	100-5821	1	End Cap w/ Drain Plugs
14	100-5822	2	Key
15	100-5823	1	Nut - Lock
16	100-5824	1	Washer
17	100-5825	1	Housing - Pinion
18	100-5826	1	Case
19	104-2424	1	Shaft - Pinion
20	100-4583	2	Plug
21	100-5847	2	O-Ring
22	100-5848	1	O-Ring
23	100-7757	1	Shim - Green
24	100-7758	1	Shim - Blue

Ref. No.	Part No.	Qty.	Description
25	100-7759	1	Shim - Brown
26	100-7760	1	Shim - Yellow

PROTOTYPE



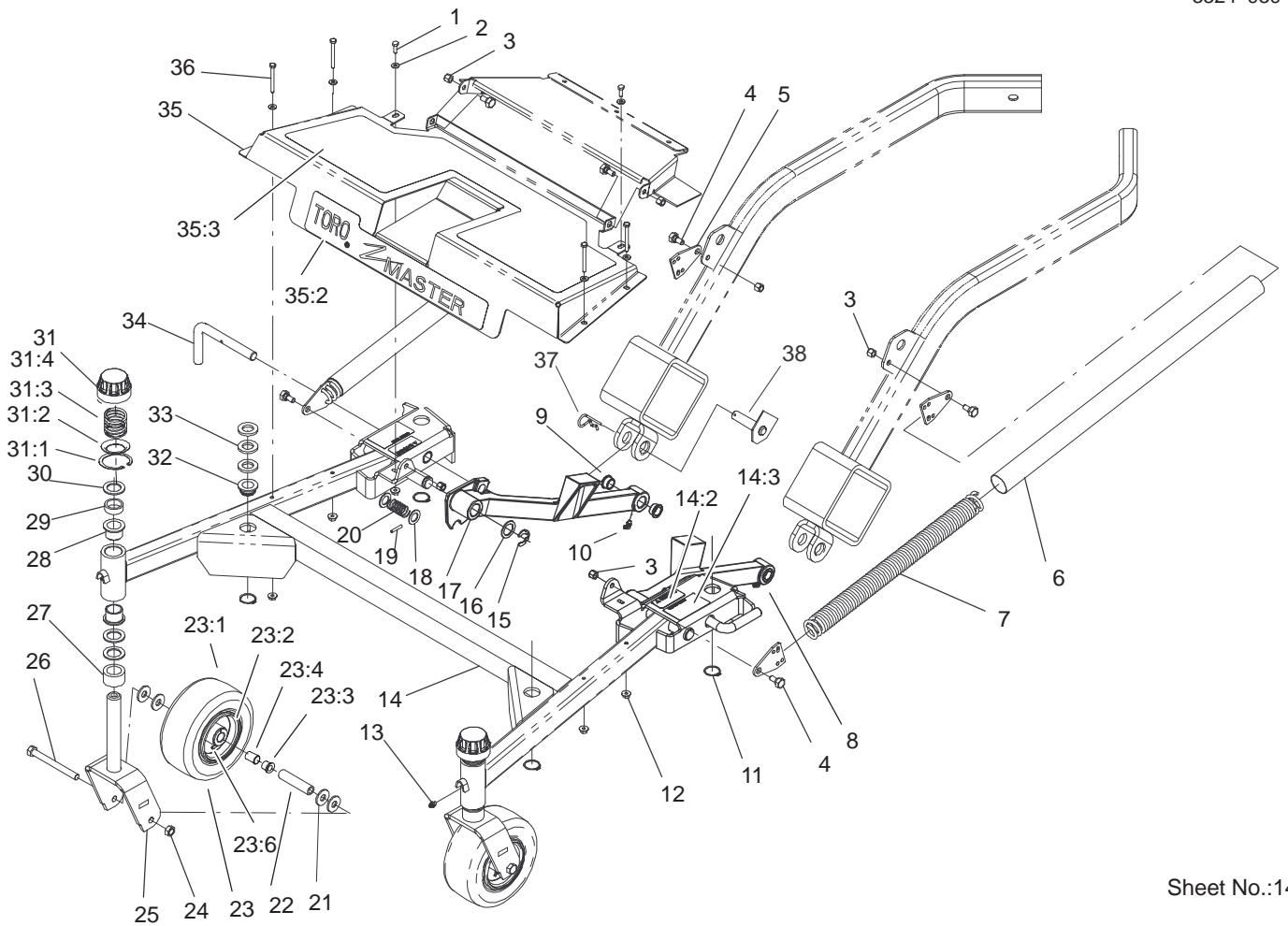
Sheet No.:A2
c-2971

Drive Shaft Assembly No. 94-4722

Ref. No.	Part No.	Qty.	Description
1	100-7765	1	Joint & Shaft Half ASM
1:2	54-9180	1	U-Joint Kit
1:2:1	62-3820	1	Fitting-Grease
2	100-7766	1	Joint & Tube Half ASM
2:2	54-9180	1	U-Joint Kit
2:2:1	62-3820	1	Fitting-Grease

Ref. No.	Part No.	Qty.	Description

PROTOTYPE



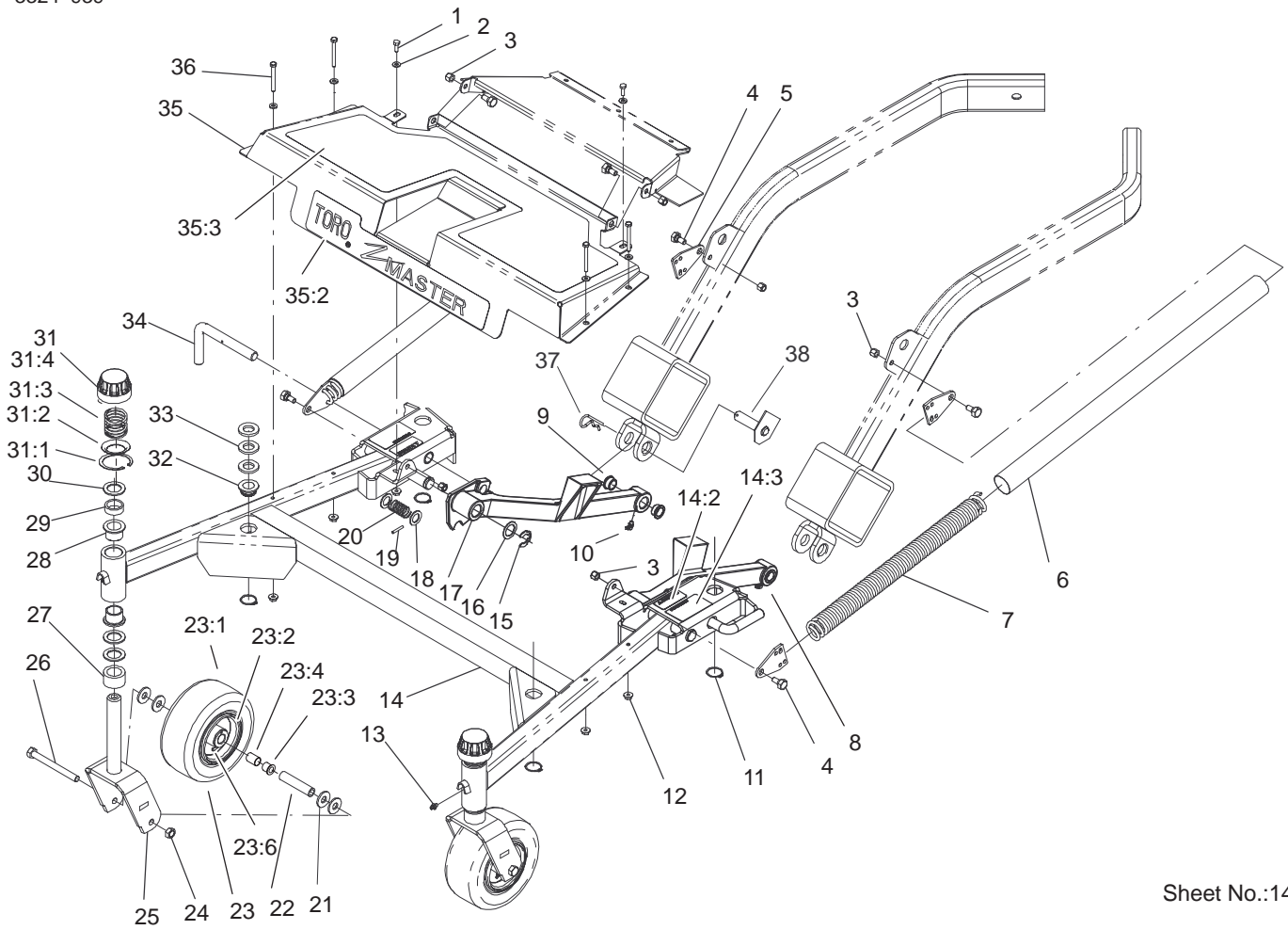
Sheet No.:14

Carrier Frame Assembly

Ref. No.	Part No.	Qty.	Description
1	321-4	2	Screw-HH
2	3256-22	6	Washer-Flat
3	3296-39	6	Nut-Lock, NI
4	46-3380	6	Bolt-Shoulder
5	94-4750	4	Plate - End, Spring
6	94-9550	2	Cover - Spring
7	94-4664	2	Spring - Extension
8	98-0817-01	1	Casting - Lift Arm, LH
9	27-9080	4	Bearing-Flange
10	302-60	2	Fitting-Lube
11	32120-33	4	Ring-Retaining
12	32128-33	6	Nut-HF
13	302-5	2	Fitting - Grease
14	100-7780	1	Carrier Frame ASM w/ Decals
14:2	55-4300	2	Decal
14:3	100-7769	2	Decal - Adjustment, Cutting Height
15	32151-91	2	Ring-Retaining
16	9202514	2	Washer
17	98-0818-01	1	Casting - Lift Arm, RH
18	9202254	4	Washer
19	32121-79	2	Pin-Roll
20	98-1339	2	Spring - Compression
21	3256-6	8	Washer-Flat
22	68-8980	2	Spanner-Tire

Ref. No.	Part No.	Qty.	Description
23	99-1268	2	Castor Wheel ASM
23:1	93-9939	1	Tire
23:2	100-2348	1	Rim Assembly
23:3	62-5580	2	Bearing-Outside
23:4	62-5570	1	Bearing-Roller
*23:5	100-5832	1	Tube w/ Valve
23:6	302-11	1	Fitting-Lube, 45°
24	32153-5	2	Nut-Lock
25	99-0295-01	2	Castor Fork ASM
26	325-19	2	Screw-HH
27	93-1167	2	Spacer - Castor
28	94-1291	4	Bushing-Special
29	63-0070	2	Spacer
30	3-6781	6	Washer-Thrust
31	92-8862	2	HOC Cap ASM
31:1	92-5581	1	Ring-Retaining
31:2	92-5583	1	Washer-Cap
31:3	92-5584	1	Spring-Compression
31:4	92-8861	1	Cap-HOC
32	1-513336	4	Bushing - Deck
33	1-513338	12	Washer - Flat
34	100-2389	2	Pin - Pivot
35	100-7774	1	Footrest ASM
35:2	100-7770	1	Decal - Z Master, Toro
35:3	100-7775	1	Pad - Footrest
36	321-15	4	Screw-HH

* Not illustrated

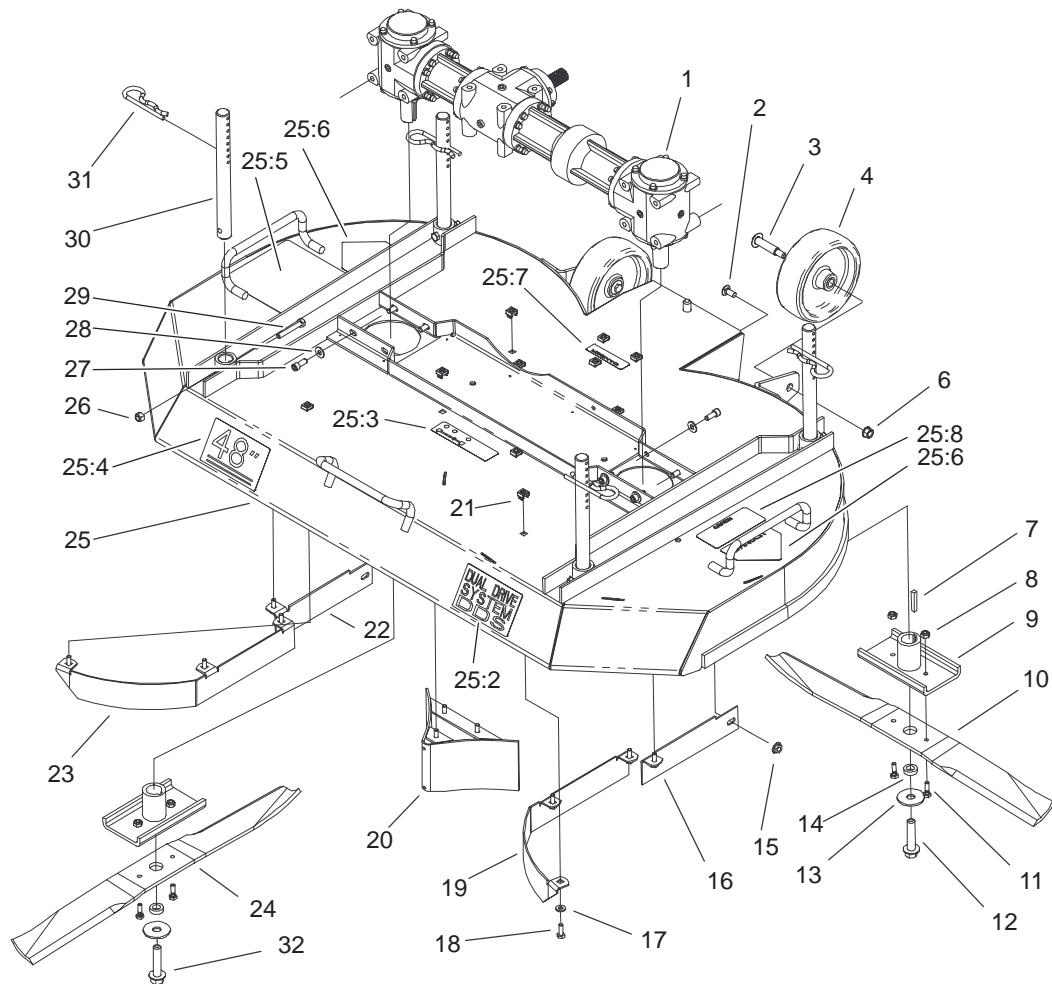


Sheet No.:14

Carrier Frame Assembly (Continued)

Ref. No.	Part No.	Qty.	Description
37	3290-343	2	Pin-Hair
38	94-4755	2	Pivot Pin ASM

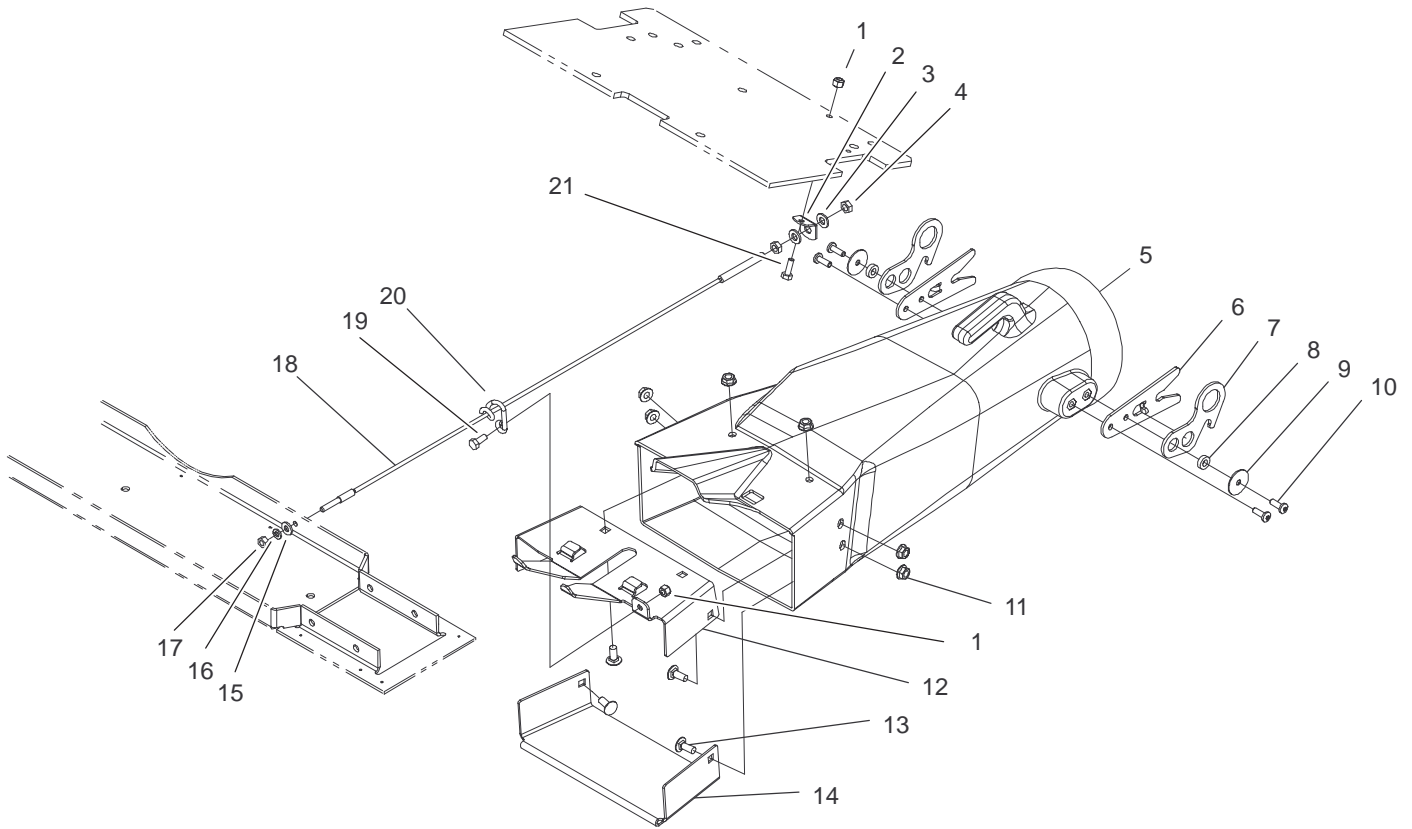
Ref. No.	Part No.	Qty.	Description
<p style="font-size: 48px; opacity: 0.5; font-family: sans-serif;">PROTOTYPE</p>			



Sheet No.:15

Deck Assembly

Ref. No.	Part No.	Qty.	Description	Ref. No.	Part No.	Qty.	Description
1	104-2446	1	Gearbox Service Kit	25	104-0371	1	48 Deck ASM w/ Decals
2	3230-23	2	Screw-CARR	25:2	100-7788	1	Decal - Dds
3	92-1057	2	Bolt-Shoulder	25:3	100-5809	1	Decal - Transmission Fluid
4	95-4102	2	Wheel	25:4	104-0354	1	Decal - 48
6	32128-21	2	Nut-HF	25:5	98-1304	1	Decal - Danger
7	67-7490	2	Key	25:6	43-8480	2	Decal-Danger
8	3296-16	4	Nut-Lock, NI	25:7	80-8760	1	Decal - Danger
9	98-0810-01	2	Blade Retainer ASM	25:8	68-8340	1	Decal-Torque, Blade Bolt
10	99-4942	1	Blade - 25", LH	26	3296-29	4	Nut-Lock
11	99-0283	4	Bolt - Shear	27	104-0356	8	Screw - HSH
12	92-5816	1	Bolt-Blade	28	100-2400	8	Washer - Hard
13	86-1990	2	Washer	29	322-10	4	Screw-HH
14	99-0217	2	Spacer	30	100-2393	4	Pin - Deck
15	32128-13	2	Nut-HF	31	3290-256	4	Pin-Cotter, Hair
16	104-0388-01	1	Bracket - Discharge, LH	32	104-2444	1	Bolt-Blade, LH Thread
17	3256-22	11	Washer-Flat				
18	321-4	11	Screw-HH				
19	98-3015-01	1	Baffle - LH				
20	100-9655-01	1	Center Baffle ASM				
21	32115-5	11	Nut-Retained				
22	104-0389-01	1	Bracket - Discharge, RH				
23	98-3016-01	1	Baffle - RH				
24	99-4941	1	Blade - 25", RH				

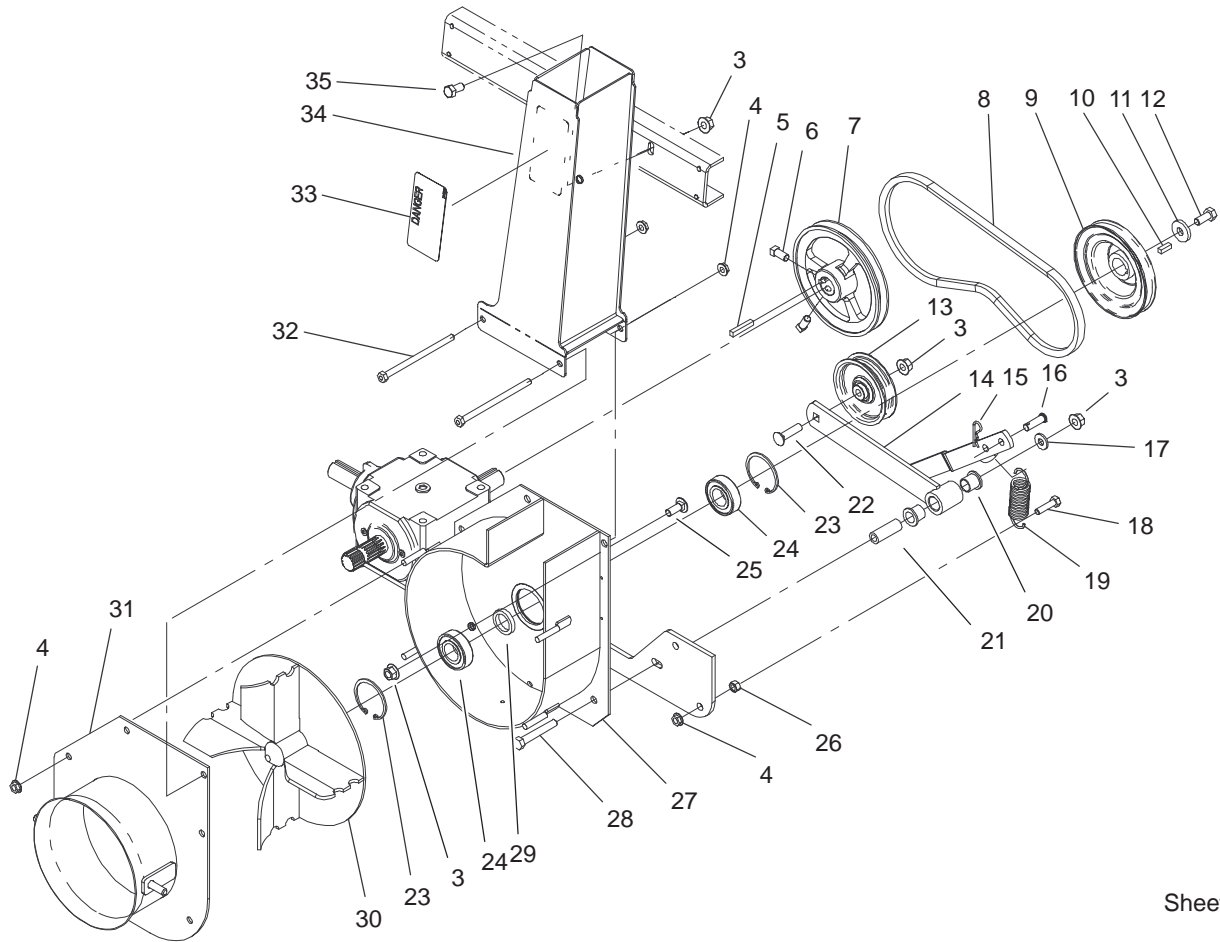


Sheet No.:16

Plenum Assembly

Ref. No.	Part No.	Qty.	Description
1	3296-42	2	Nut-Lock
2	98-3035	1	Bracket - Spring
3	3256-23	2	Washer-Flat
4	3218-2	2	Nut-Jam
5	104-2412	1	Plenum
6	104-0350	2	Plate - Guide
7	100-7799	2	Plate - Latch
8	104-0351	2	Spacer
9	3256-58	2	Washer-Flat
10	614267	4	Screw-PH,Torx
11	32128-35	6	Nut-HF
12	104-0385-03	1	Plate - Plenum, Top
13	3230-23	6	Screw-CARR
14	104-0386-03	1	Plate - Plenum, Bottom
15	3256-22	1	Washer-Flat
16	3253-3	1	Washer-Lock/Sp
17	3217-5	1	Nut-Hex
18	104-0396	1	Cable - Tension
19	321-3	1	Screw-HH
20	104-2405	1	Guide - Cable
21	321-4	1	Screw-HH

Ref. No.	Part No.	Qty.	Description
<p style="font-size: 48px; opacity: 0.5; font-weight: normal;">PROTOTYPE</p>			



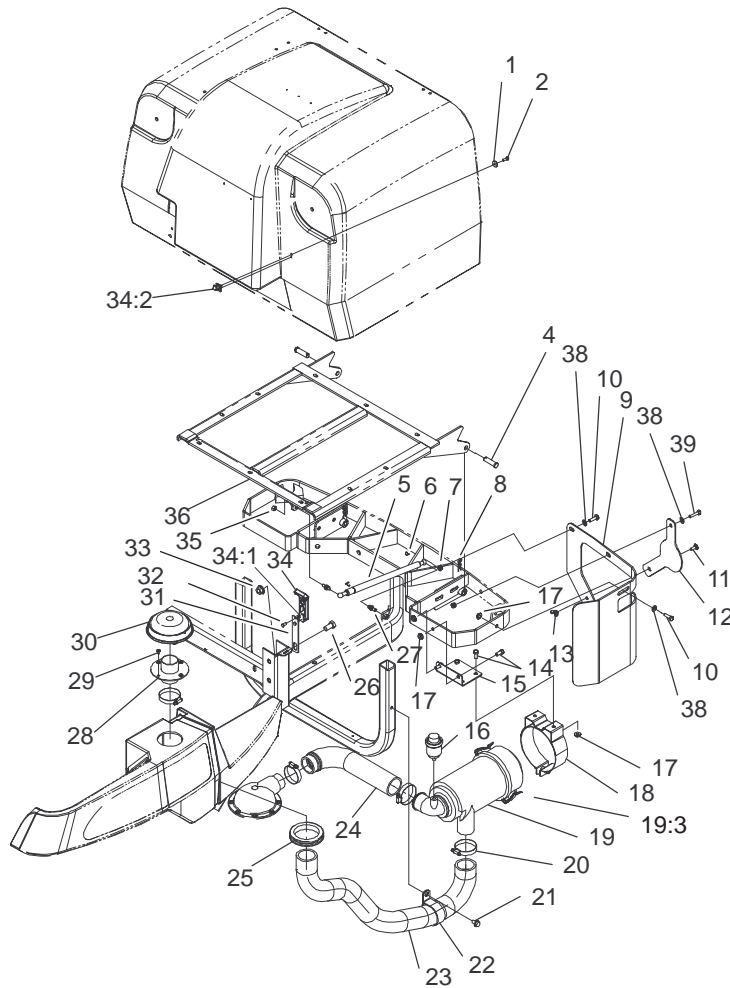
Sheet No.:17

Blower Assembly

Ref. No.	Part No.	Qty.	Description
3	32128-21	4	Nut-HF
4	32128-25	7	Nut-Flange
5	67-7490	1	Key
6	3242-4	2	Screw-Set, SQH
7	94-4630	1	Pulley - Gearbox
8	19-2650	1	V-Belt
9	99-0287	1	Pulley - Impeller
10	20-9540	1	Key
11	65-8680	1	Washer - Thrust, Plain
12	323-5	1	Screw-HH
13	56-4920	1	Idler Pulley
14	95-6437-03	1	Idler Arm ASM
15	3290-467	1	Pin-Hair
16	283-2	1	Pin-Clevis
17	3256-3	1	Washer-Flat
18	322-6	1	Screw-HH
19	67-1440	1	Spring-Extension
20	256-90	2	Bushing-Flange
21	95-6448	1	Spacer
22	3231-4	1	Screw-CARR
23	32120-8	2	Ring-Snap
24	251-82	2	Bearing-Ball
25	3231-2	1	Screw-CARR
26	3217-6	1	Nut-Hex
27	99-0290-03	1	Housing ASM
28	323-12	1	Screw-HH

Ref. No.	Part No.	Qty.	Description
29	95-6427	1	Spacer - Bearing
30	99-0296-03	1	Impeller ASM
31	100-7795-03	1	Cover ASM
32	322-29	2	Screw-HH
33	79-0360	1	Decal-Danger
34	104-2418-03	1	Impeller Chute ASM
35	323-4	1	Screw-HH

PROTOTYPE



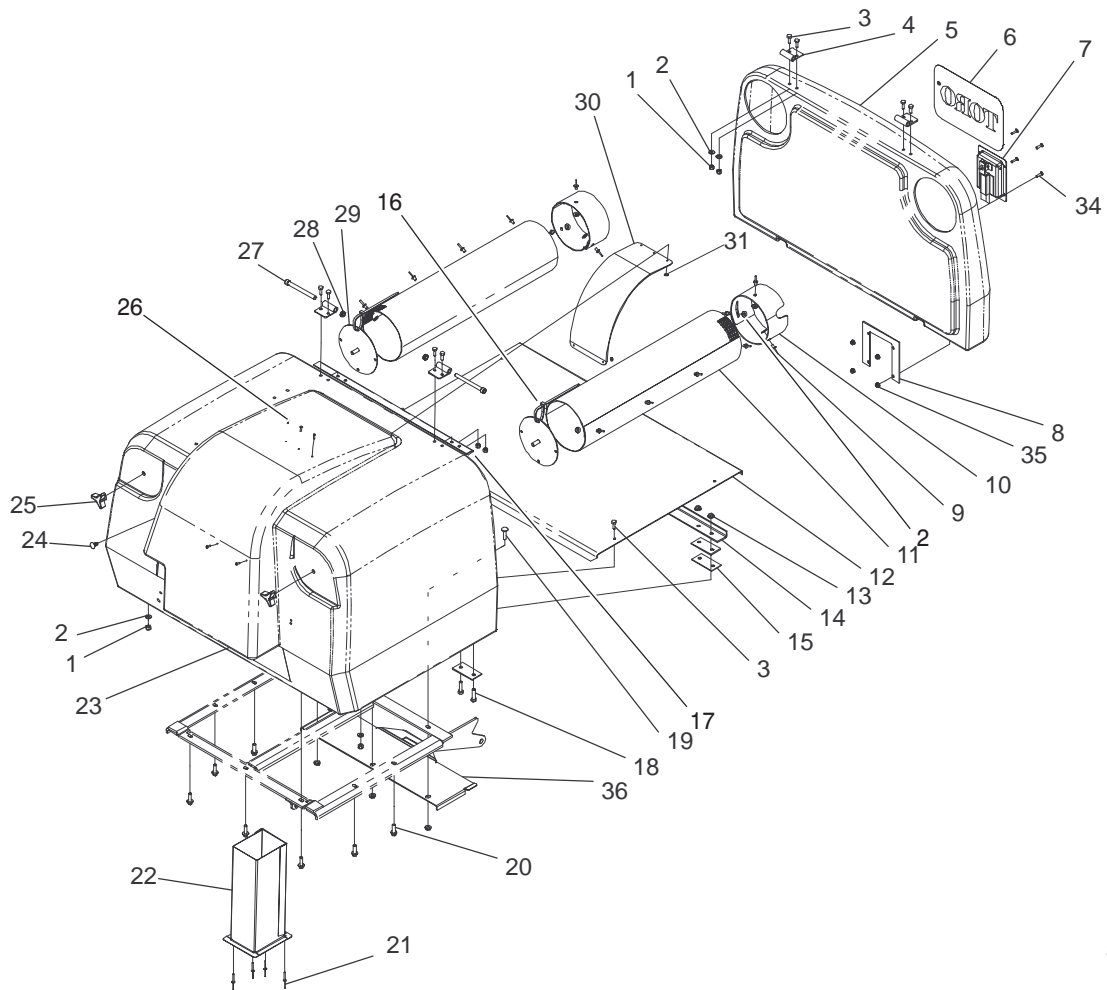
Sheet No.:18

Air Cleaner and Bagger Frame Assembly

Ref. No.	Part No.	Qty.	Description	Ref. No.	Part No.	Qty.	Description
1	3256-61	1	Washer-Flat	24	100-2406	1	Hose
2	3290-134	1	Screw-Ind Hex	25	240-8	1	Rubber Grommet
4	283-40	2	1/2x 1-3/4 Clevis Pin	26	325-4	1	Screw-HH
5	98-3043	1	Gas Spring	27	88-6770	2	Stud-Ball
6	98-3044	2	Safety Clip	28	100-2411-03	1	Flanged Connector ASM
7	3296-29	2	Nut-Lock	29	32104-111	4	Screw
8	3290-355	2	Pin-Hair	‡30		1	Hood
9	104-0355-03	1	Guard - Filter, Air	31	98-3032	1	Bracket - Latch
10	322-5	2	Screw-HH	32	3290-359	2	Screw-HWH
11	3230-23	1	Screw-CARR	33	32128-23	1	Nut-HF
12	104-0364-03	1	Plate - Cover	34	94-5626	1	Latch - Draw, Flexible
13	32103-29	1	Nut-Wing	34:1	100-5806	1	Handle - Latch
14	322-3	4	Screw-HH	34:2	100-5807	1	Keeper - Latch
15	100-2412-03	1	Bracket	35	32152-1	2	Nut-Lock, NI
‡16		1	Filter Minder	36	104-2432-03	1	Grass Bin Frame ASM
17	32128-13	5	Nut-HF	38	3256-23	3	Washer-Flat
‡18		1	Bracket-A/C	39	322-6	1	Screw-HH
‡19		1	Air Cleaner				
*19:1	100-4557	1	Filter - Safety				
*19:2	100-4556	1	Element A/C				
19:3	99-3174	2	Clip-Cleaner, Air				
*19:4	99-3175	1	Valve-Ejector, Dust				
20	2412-130	4	Hose Clamp				
21	32144-14	1	Screw-HWH				
22	2412-102	1	R-Clamp				
23	100-2405	1	Hose				

‡ Obtain locally.

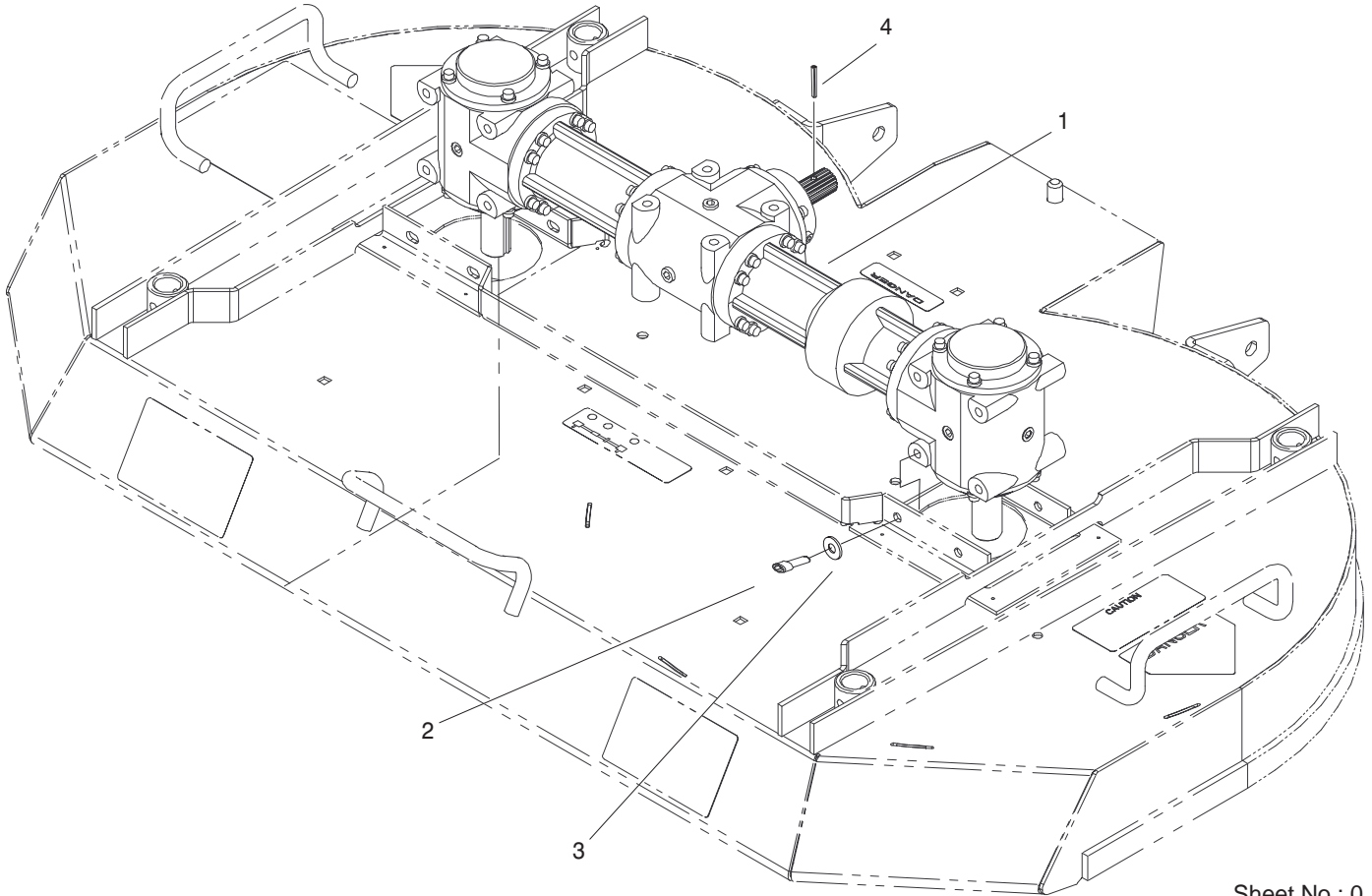
* Not illustrated



Sheet No.:19

Bagger Assembly

Ref. No.	Part No.	Qty.	Description	Ref. No.	Part No.	Qty.	Description
1	3296-42	10	Nut-Lock	27	3274-102	2	Screw-HSH
2	3256-22	20	Washer-Flat	28	3296-59	2	Nut-Lock, NI
3	321-4	10	Screw-HH	29	95-6444-03	2	Plate ASM
4	98-3027-03	4	Hinge	30	100-4552	1	Plate - Wear
5	100-9617	1	Cover - Bin	31	3256-12	5	Washer-Flat
6	67-7310	1	Decal - Toro Logo, 7"	34	104-2408	4	Screw - Button Head
7	100-9631	1	Lever - Latch	35	32128-17	4	Nut - Lock, Flange
8	100-9632-03	1	Plate - Latch	36	100-7773-03	1	Plate - Latch
9	3290-412	14	Rivet				
10	100-5845	2	Ring - Support				
11	95-6441	2	Screen				
12	100-4550-03	1	Floor - Hopper				
13	32128-25	14	Nut-Flange				
14	98-0849-03	1	Flange - Bin				
15	98-3004	6	Spacer				
16	3290-378	8	Tie-Cable				
17	98-3036-03	1	Angle - Bin				
18	322-6	4	Screw-HH				
19	3230-3	3	Screw-CARR				
20	3234-17	7	Screw-HHF				
21	98-7310	4	Rivet				
22	95-6482-03	1	Chute ASM				
23	104-2417	1	Bin - Grass				
24	104-0395	1	Plug - Plastic				
25	233-52	2	Knob				
26	3269-17	5	Pop Rivet				



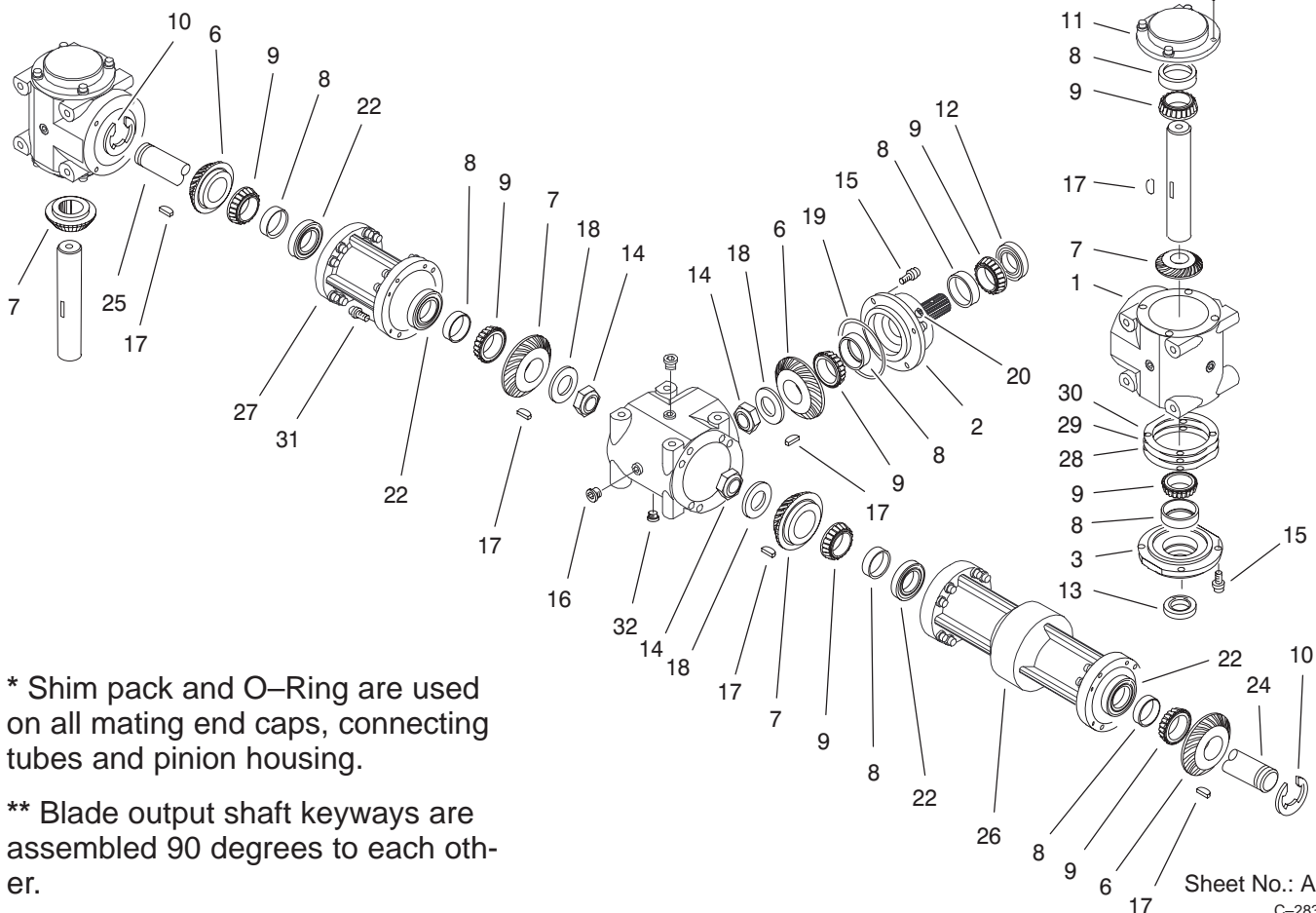
Sheet No.: 0
C-2840

Gearbox Kit Assembly

Ref. No.	Part No.	Qty.	Description
1		1	Gearbox ASM
2	104-0356	8	Screw - HSH
3	100-2400	8	Washer - Hard
4	32121-48	1	Pin-Spring

Ref. No.	Part No.	Qty.	Description

PROTOTYPE



* Shim pack and O-Ring are used on all mating end caps, connecting tubes and pinion housing.

** Blade output shaft keyways are assembled 90 degrees to each other.

Sheet No.: A1

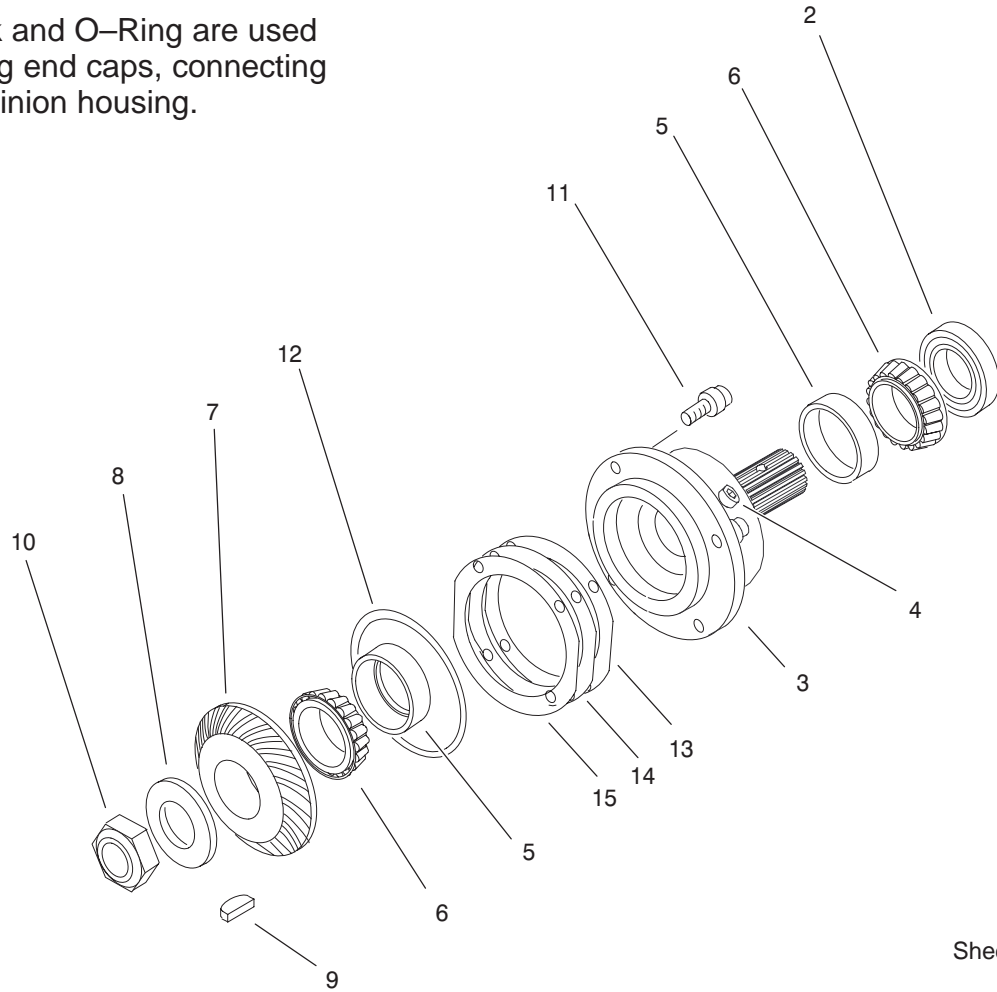
C-2839

Gearbox Assembly

Ref. No.	Part No.	Qty.	Description	Ref. No.	Part No.	Qty.	Description
1	100-4564	3	Case	25	100-4588	1	Shaft - Connecting, Short
2	100-4565	1	Housing - Pinion	26	100-4589	1	Flange - Connecting, Long
3	100-4566	2	Cap - End, Open	27	100-4590	1	Flange - Connecting, Short
*4	100-7755	1	Pinion Service ASM, Splined	28	100-4591	1	Shim - Brown
*5	100-7754	1	Shaft Service ASM, LH	29	100-4592	1	Shim - Blue
6	100-4569	3	Gear - 27 Tooth	30	100-4593	1	Shim - Green
7	100-4570	4	Gear - 29 Tooth	31	100-4594	32	Screw
8	100-4571	10	Cup - Bearing	32	100-4595	1	Plug - Magnetic
9	100-4572	10	Cone - Bearing				
10	100-4573	2	Ring - Retaining				
11	100-4574	2	Cap - End, Closed				
12	100-4575	1	Seal				
13	100-4576	2	Seal				
14	100-4577	3	Nut - Jam				
15	100-4578	20	Screw				
16	100-4579	8	Plug				
17	100-4580	7	Key - Woodruff				
18	100-4581	3	Washer				
19	100-4582	9	O-Ring				
20	100-4583	1	Plug				
22	100-4585	4	Seal				
*23	104-2427	1	Shaft Service ASM, RH				
24	100-4587	1	Shaft - Connecting, Long				

* Not illustrated

* Shim pack and O-Ring are used on all mating end caps, connecting tubes and pinion housing.



Sheet No.: A2
C-2968

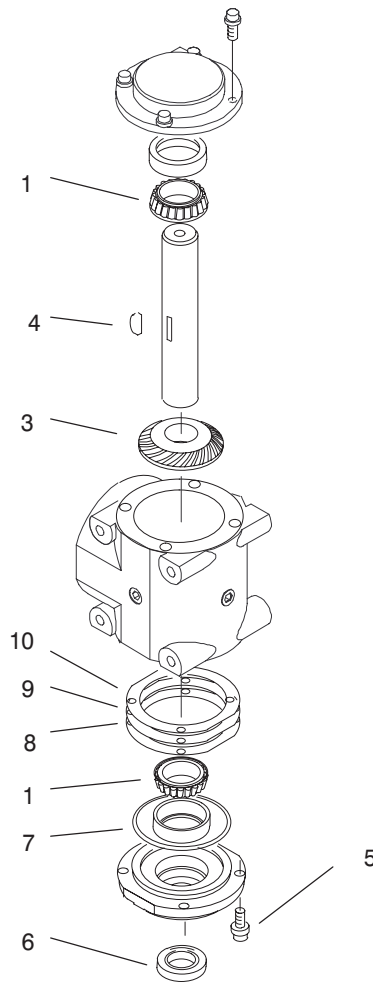
Pinion Assembly No. 100-7755

Ref. No.	Part No.	Qty.	Description
2	100-4575	1	Seal
3	100-4565	1	Housing – Pinion
4	100-4583	1	Plug
5	100-4571	2	Cup – Bearing
6	100-4572	2	Cone – Bearing
7	100-4569	1	Gear – 27 Tooth
8	100-4581	1	Washer
9	100-4580	1	Key – Woodruff
10	100-4577	1	Nut – Jam
11	100-4578	4	Screw
12	100-4582	1	O-Ring
13	100-4591	2	Shim – Brown
14	100-4592	1	Shim – Blue
15	100-4593	1	Shim – Green

Ref. No.	Part No.	Qty.	Description
<p style="font-size: 48px; opacity: 0.5; font-weight: normal;">PROTOTYPE</p>			

* Shim pack and O-Ring are used on all mating end caps, connecting tubes and pinion housing.

** Blade output shaft keyways are assembled 90 degrees to each other.



Sheet No.: A3
C-2969

Lefthand Shaft Service Assembly No. 100-7754

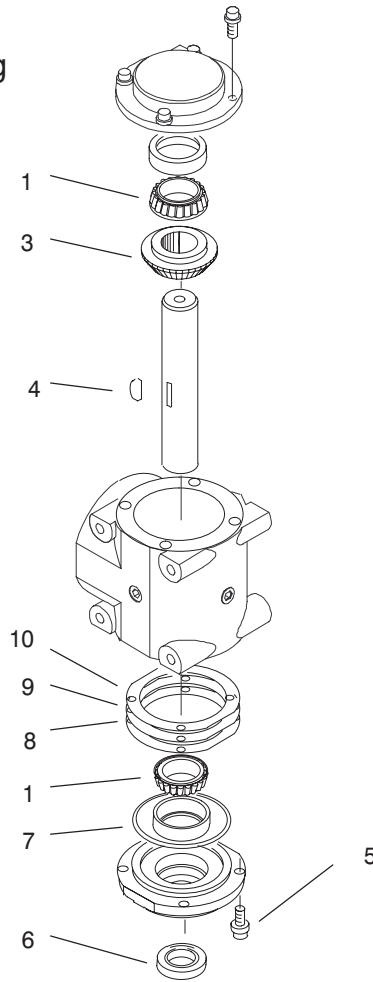
Ref. No.	Part No.	Qty.	Description
1	100-4572	2	Cone - Bearing
3	100-4570	1	Gear - 29 Tooth
4	100-4580	1	Key - Woodruff
5	100-4578	4	Screw
6	100-4576	1	Seal
7	100-4582	1	O-Ring
8	100-4591	2	Shim - Brown
9	100-4592	1	Shim - Blue
10	100-4593	1	Shim - Green

Ref. No.	Part No.	Qty.	Description

PROTOTYPE

* Shim pack and O-Ring are used on all mating end caps, connecting tubes and pinion housing.

** Blade output shaft keyways are assembled 90 degrees to each other.



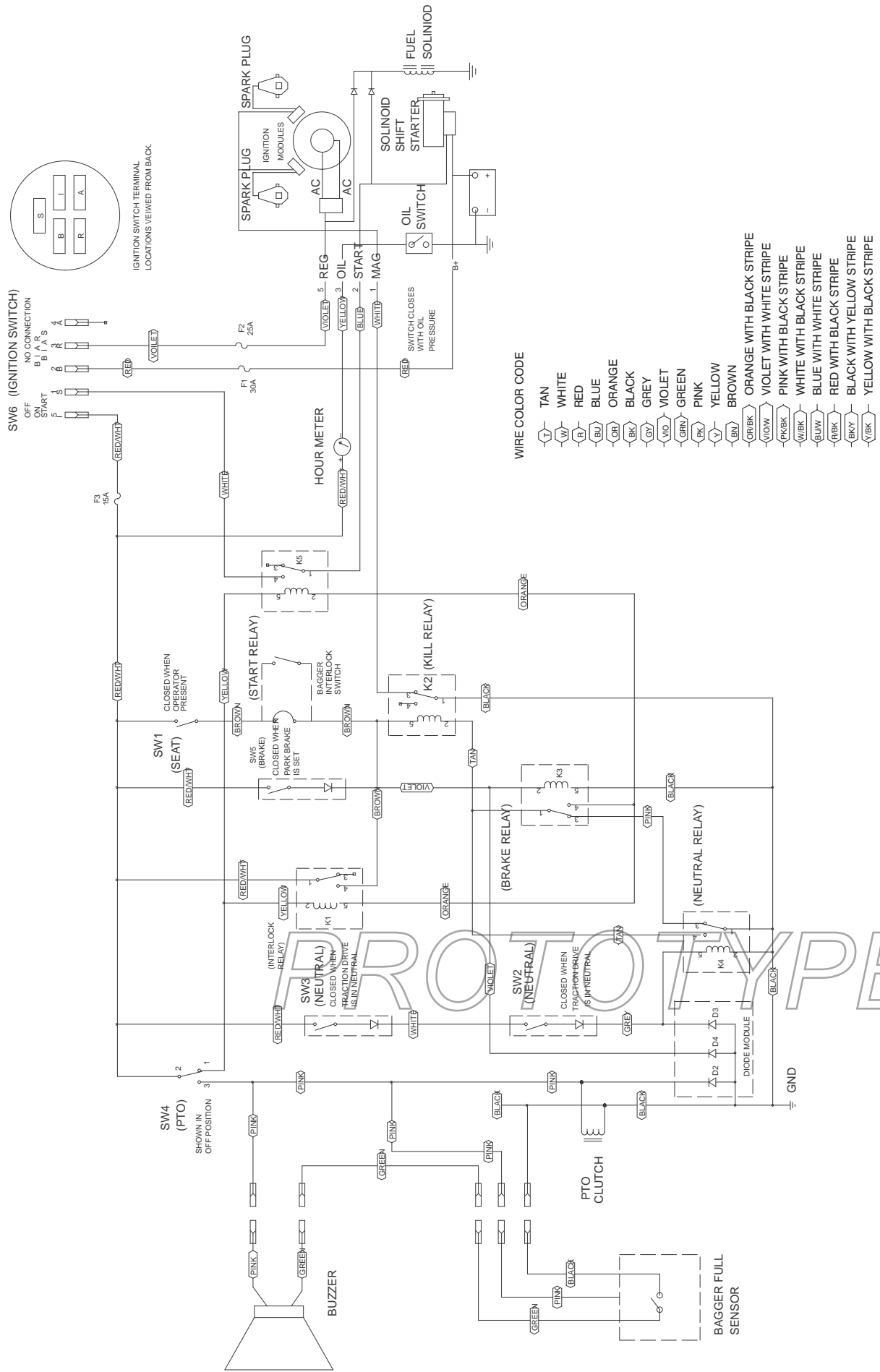
Sheet No.: A4
C-2970

Righthand Shaft Service Assembly No. 104-2427

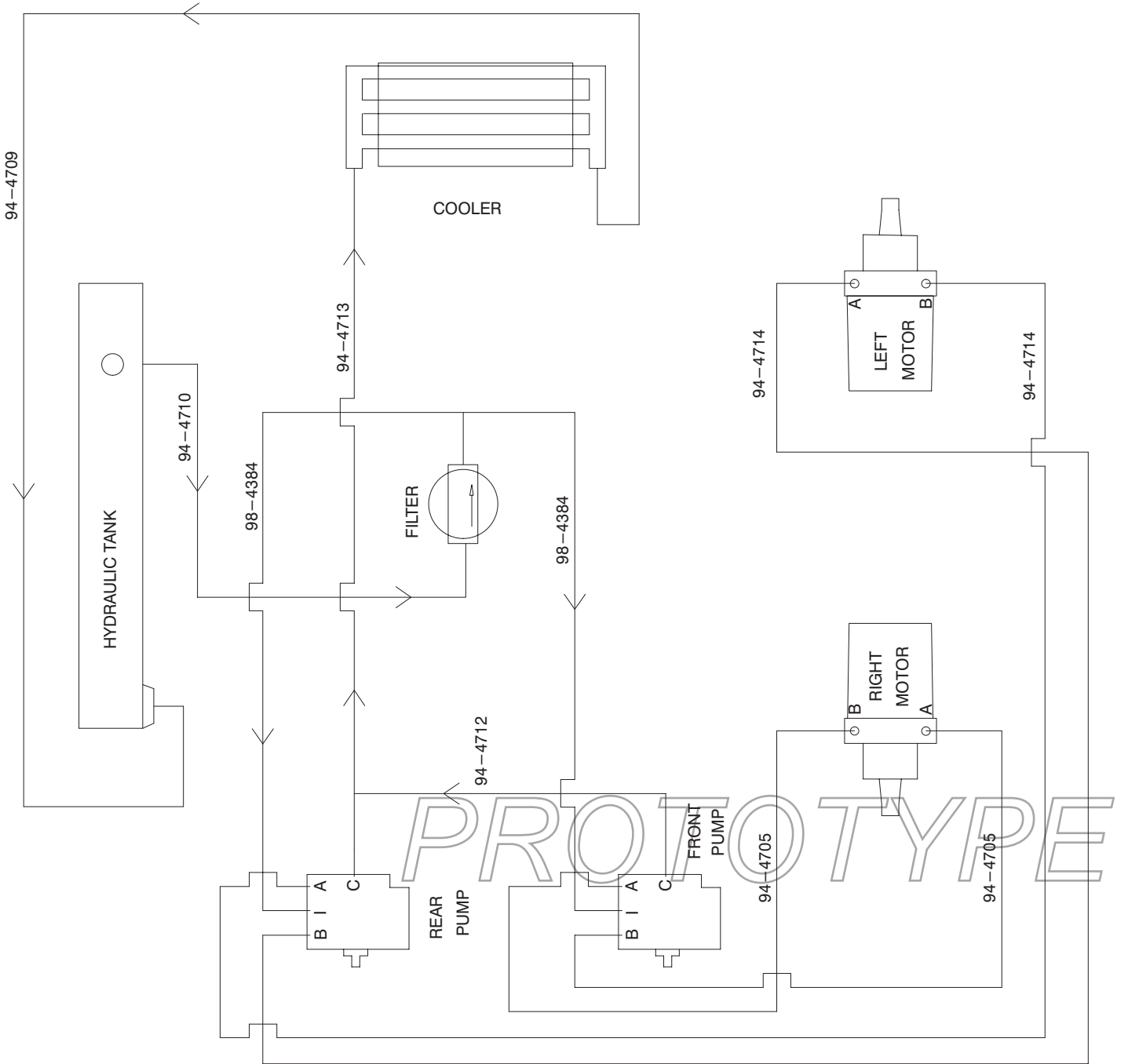
Ref. No.	Part No.	Qty.	Description
1	100-4572	2	Cone - Bearing
3	100-4570	1	Gear - 29 Tooth
4	100-4580	1	Key - Woodruff
5	100-4578	4	Screw
6	100-4576	1	Seal
7	100-4582	1	O-Ring
8	100-4591	2	Shim - Brown
9	100-4592	1	Shim - Blue
10	100-4593	1	Shim - Green

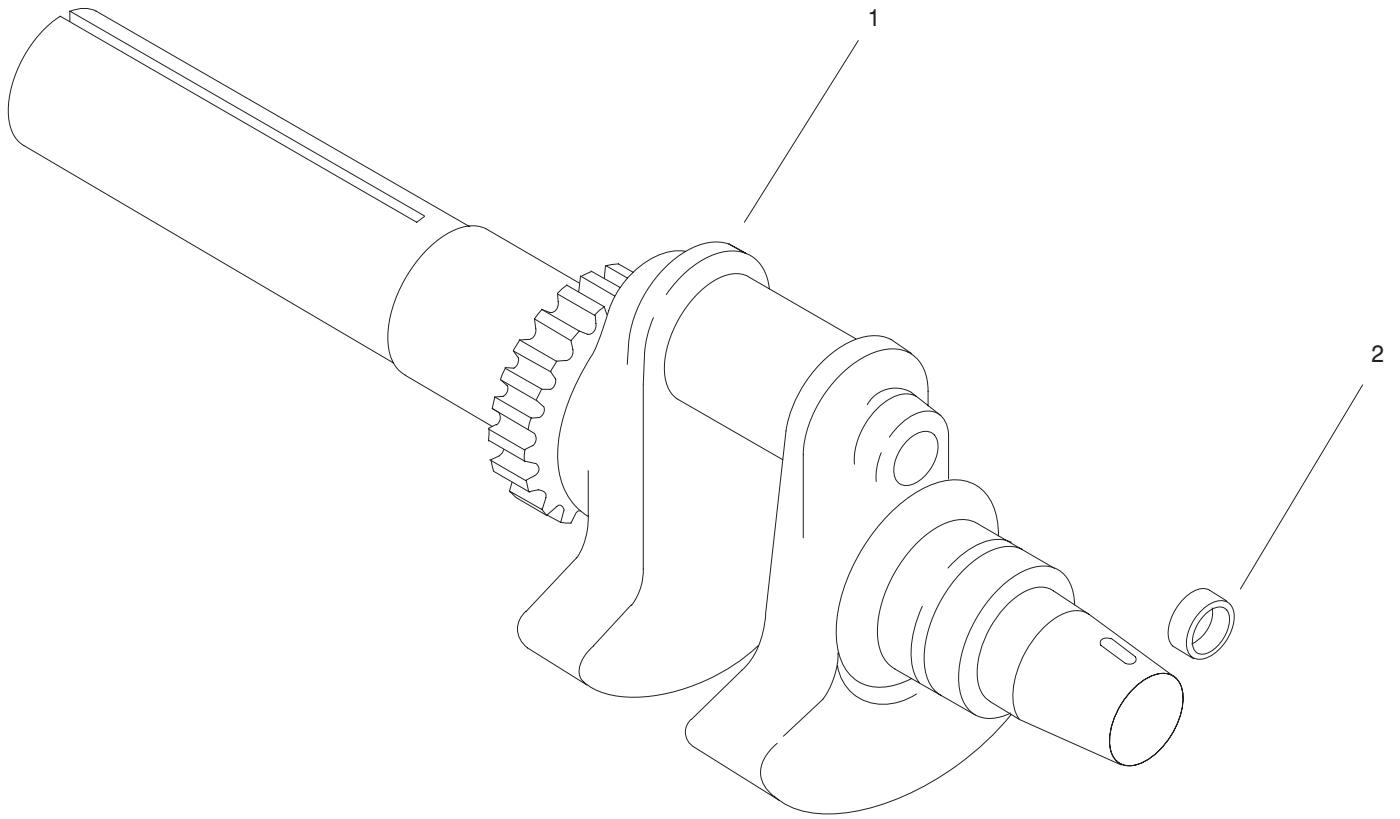
Ref. No.	Part No.	Qty.	Description
<p style="font-size: 48px; opacity: 0.5; transform: rotate(-1deg);">PROTOTYPE</p>			

Electric Schematic



Hydraulic Schematic





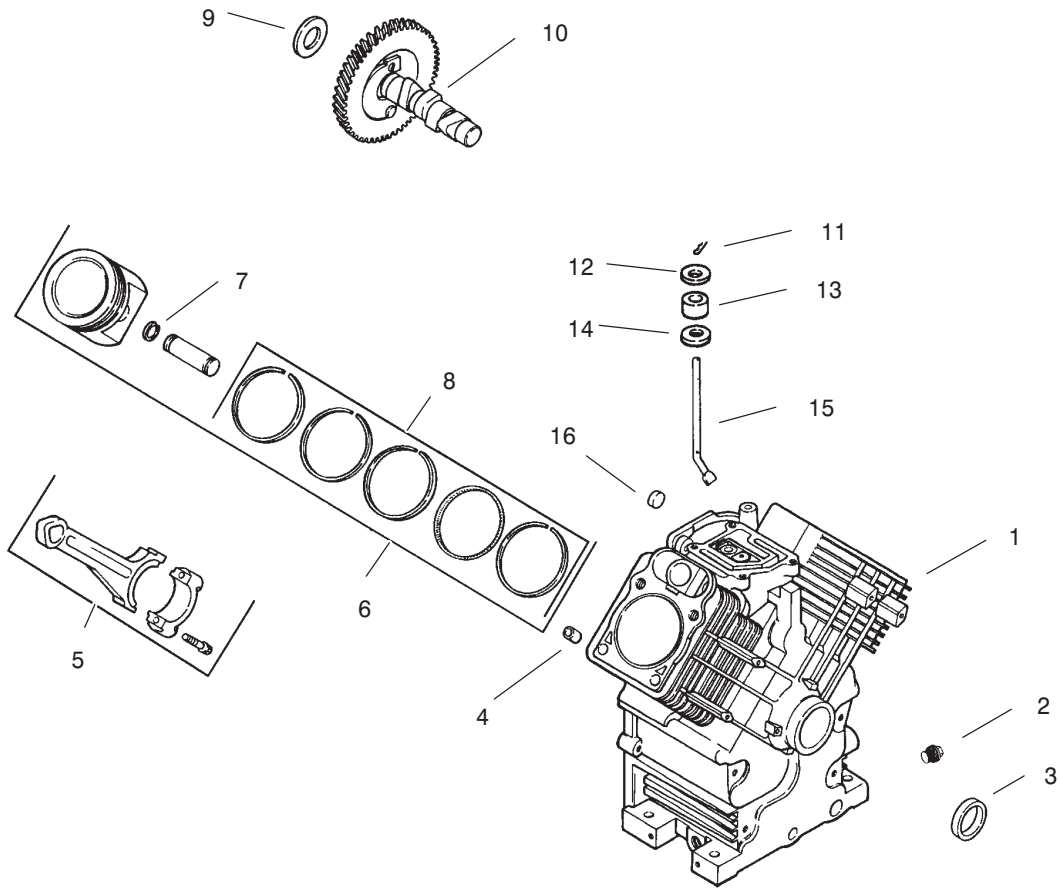
Crankshaft (Kohler CH25S PS68656)

Ref. No.	Part No.	Qty.	Description
1	24 014 72-S		Crankshaft (Incl. Ref. 2)
2	52 139 09-S		Plug, cup

Ref. No.	Part No.	Qty.	Description

PROTOTYPE

Obtain Parts from Kohler



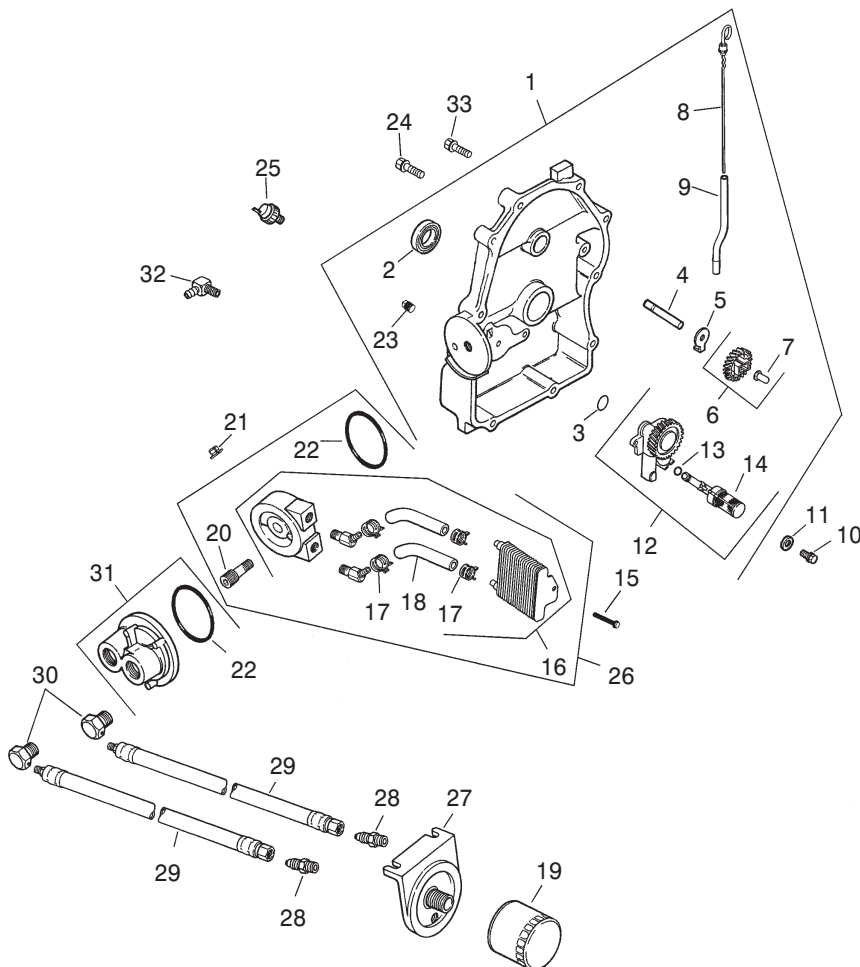
Crankcase (Kohler CH25S PS68656)

Ref. No.	Part No.	Qty.	Description
1	24 561 33-S		Kit, service crankcase (Incl. Ref. 2, 4, 16 & 24 113 56)
2	X -75-10-S	2	Plug, pipe 3/8
3	24 032 01-S		Seal, oil front
4	12 380 17-S	6	Pin, dowel locating
5	24 067 13-S	2	Connecting Rod (Std.)
	24 067 14-S	2	Connecting Rod (.25)
6	24 874 06-S	2	Piston w/Ring Set (Std.) (Includes 7,8)
7	24 018 01-S	4	Retainer, piston pin
8	24 108 04-S		Ring Set (Std.)
9	12 422 09-S	AR	Shim, camshaft red
	12 422 13-S	AR	Shim, camshaft black
	12 422 07-S	AR	Shim, camshaft white
	12 422 08-S	AR	Shim, camshaft blue
	12 422 10-S		Shim, camshaft - yellow
	12 422 11-S	AR	Shim, camshaft green

Ref. No.	Part No.	Qty.	Description
	12 422 12-S	AR	Shim, camshaft gray
10	24 012 10-S		Camshaft
11	12 380 04-S		Pin, hitch
12	M-631005-S		Washer, plain 6 mm
13	12 032 01-S		Seal, governor cross shaft
14	X-25-102-S		Washer, plain 1/4
15	24-144-01-S		Shaft, governor cross
16	52 139 09-S		Plug, cup
*	24 113 56-S		Decal

Obtain Parts from Kohler

* Not illustrated

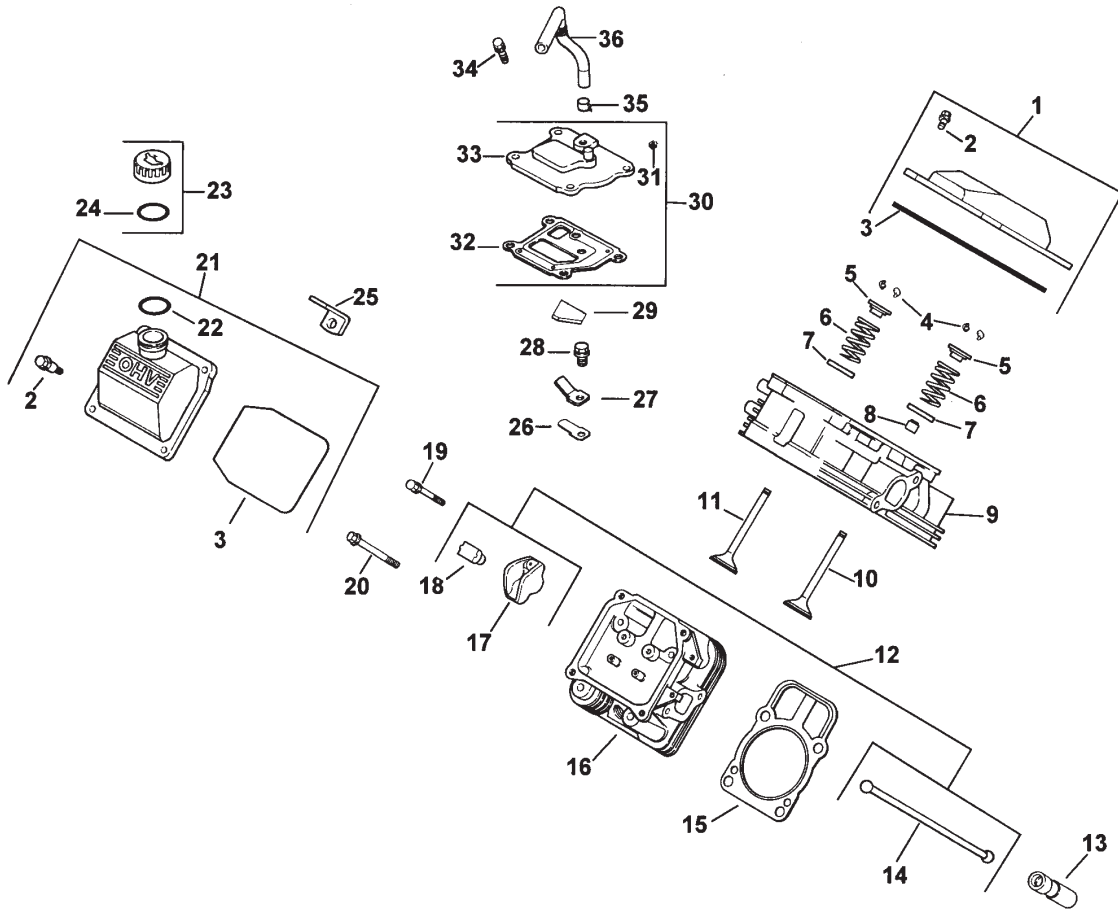


Oil Pan / Lubrication (Kohler CH25S PS68656)

Ref. No.	Part No.	Qty.	Description	Ref. No.	Part No.	Qty.	Description
1	24 009 82-S		Kit, closure plate (incl. 2-9 & 13, 14, 23)	19	52 050 02-S		Filter, oil
2	52 032 08-S		Seal, oil (PTO end)	20	24 136 03-S		Nipple, oil filter
3	24 153 08-S		O-Ring	21	24 100 01-S	2	Nut, plastic
4	12 144 02-S		Shaft, governor gear	22	24 153 13-S		O-Ring
5	52 448 02-S		Tab, locking	23	X-75-23-S		Plug, allen hd. 1/8 pipe
6	24 043 12-S		Kit, governor gear w/pin (Includes 7)	24	24 086 16-S	9	Screw, hex. flange M8x1.25x45
7	12 380 01-S		Pin, governor regulating	25	24 099 03-S		Switch, oil pressure
8	24 038 06-S		Dipstick	26	54 755 21-S		Kit, alum base oil cooler (incl. 16-18, 20 & 22)
9	24 123 08-S		Tube, dipstick	27	25 029 01-S		Adapter, remote-oil filter
10	M-645025-S	2	Screw, hex. flange M6x1.0x25	28	52 136 02-S	2	Nipple, hex
11	M-631005-S	2	Washer, plain 6 mm	29	52 326 11-S	2	Hose, oil
12	24 393 10-S		Oil pump assembly (Includes 13-14)	30	24 294 04-S	2	Reducing, fitting
13	24 153 01-S		O-Ring, oil pick-up	31	24 029 02-S	2	Adapter, oil filter (incl. 22)
14	24 381 04-S		Pick-up, oil	32	25 155 02-S		Connector
15	24 086 12-S	2	Screw, hex. cap M6x1.7x18	33	24 086 17-S		Screw, hex. flange M8x1.25x45
16	24 594 09-S		Cooler, oil (Includes 17,18)	*	24 113 25-S		Decal, oil cooler
17	24 237 03-S	4	Clamp, hose				
18	24 326 15-S	2	Hose, oil				

Obtain Parts from Kohler

* Not illustrated

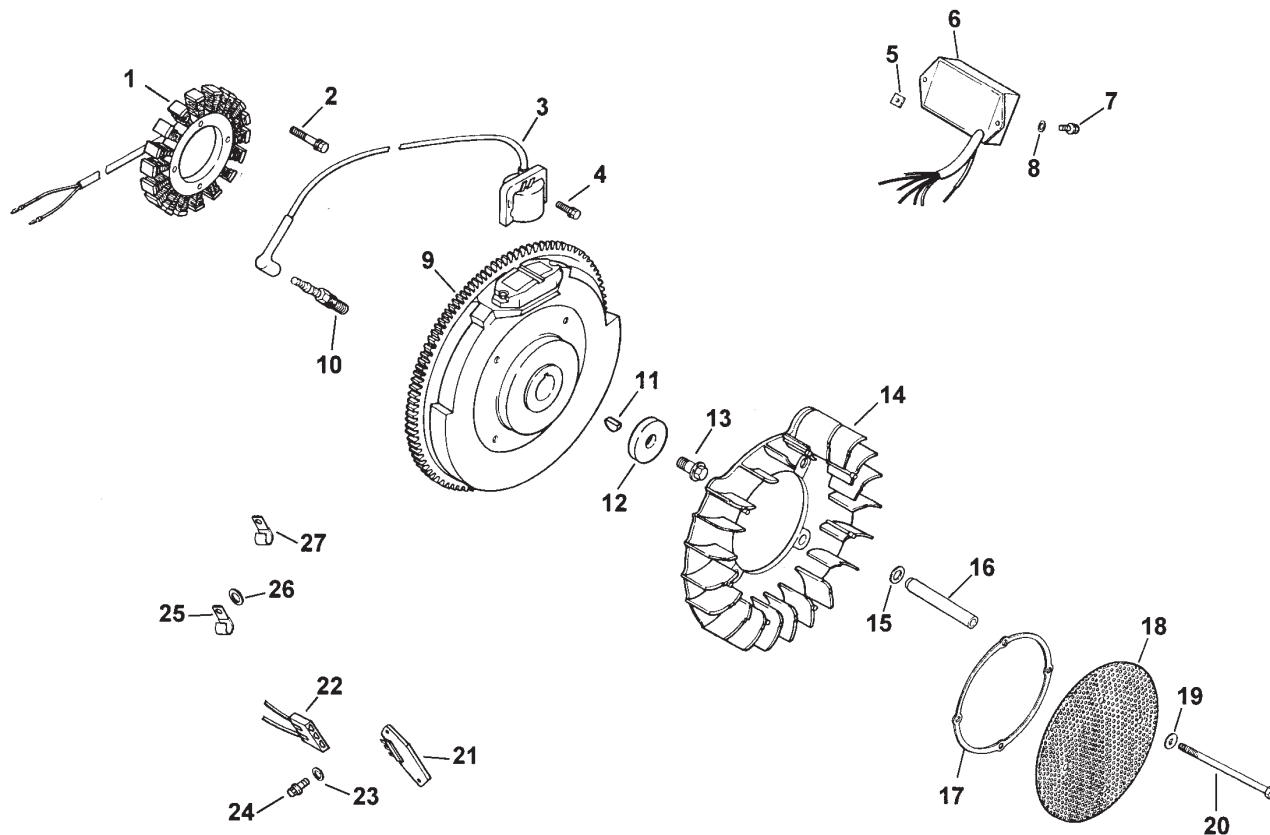


Head / Valve / Breather (Kohler CH25S PS68656)

Ref. No.	Part No.	Qty.	Description
1	24 755 74-S		Kit, valve cover – plain (Includes 2,3)
2	24 086 32-S	4	Screw, shoulder
3	24 153 16-S		O-Ring
4	12 755 03-S	4	Kit, retainer
5	12 173 01-S	4	Cap, valve spring
6	24 089 02-S	4	Spring, valve
7	235011-S	4	Retainer, spring
8	24 032 05-S	2	Seal, valve stem
9	24 318 13-S		Head assembly, #1 cylinder
10	24 017 01-S	2	Valve, intake (Std.)
	24 017 02-S	2	Valve, intake (.25)
11	24 016 01-S	2	Valve, exhaust (Std.)
	24 016 02-S	2	Valve, exhaust (.25)
12	24 755 66-S		Kit, valve train (Includes 14,17,18)
13	12 351 02-S	4	Lifter, valve
14	24 411 05-S	4	Rod, push
15	24 041 16-S	2	Gasket, cylinder head
16	24 318 14-S		Head assembly, #2 cylinder
17	25 186 01-S	4	Arm, rocker
18	24 599 01-S	4	Pivot, rocker arm
19	M-640034-S	4	Screw, hex. flange M6x1.0x34

Ref. No.	Part No.	Qty.	Description
20	24 072 09-S	8	Stud, M10x1.5x90
21	24 755 75-S		Kit, valve cover – oil fill (Includes 2,3,22)
22	24 153 09-S		O-Ring
23	24 755 46-S		Kit, oil fill cap (Includes 24)
24	12 153 03-S		O-Ring, oil fill cap
25	24 445 01-S		Strap, lifting
26	24 402 03-S		Reed, breather
27	12 018 01-S		Retainer, breather reed
28	M-545010-S		Screw, hex. flange M5x0.8x10
29	24 050 01-S		Filter, breather
30	24 033 01-S		Kit, breather (Includes 31-33)
31	X-75-23-S		Plug, allen head 1/8 pipe
32	24 041 23-S		Gasket, breather
33	24 096 02-S		Cover, breather
34	M-645020-S	4	Screw, hex. flange M6x1.0x20
35	X-426-9-S		Clamp, breather
36	24 326 06-S		Hose, breather
37	24 468 18-S	8	Washer, flat
38	M-841080-S	8	Nut, hex. flange M8x1.25

Obtain Parts from Kohler

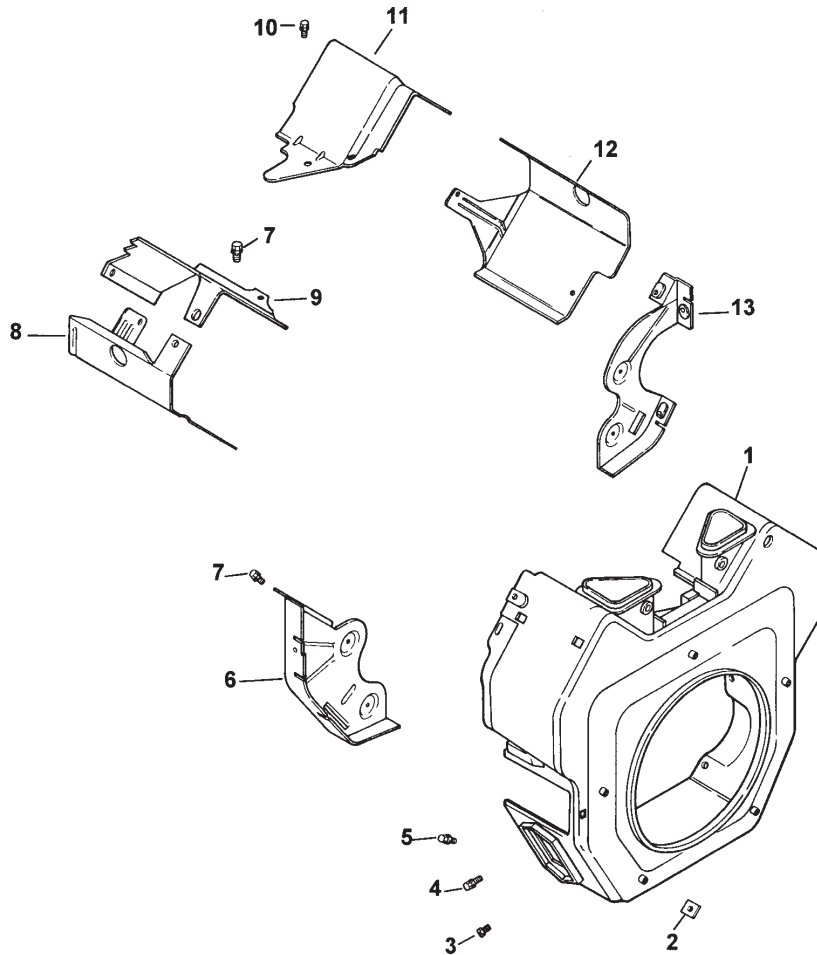


Ignition / Electrical (Kohler CH25S PS68656)

Ref. No.	Part No.	Qty.	Description	Ref. No.	Part No.	Qty.	Description
1	54 755 09-S		Kit, 15 amp stator (Incl. 28)	21	25 403 03-S		M6x1.0x100 Rectifier-regulator 15 amp
2	M-548025-S	2	Screw, hex. cap M5x0.8x25	22	236602-S		Connector
3	24 584 15-S	2	Module, ignition	23	X-25-92-S	2	Washer, plain 3/16
4	M-561025-S	4	Screw, hex. socket hd. M5x0.8x25	24	24 086 18-S	2	Screw, phillips hd. 11-16x7/8
5	24 100 02-S	2	Nut, plastic	25	47 154 01-S		Clip, cable
6	24 584 09-S		Module, speed advance	26	X-25-63-S		Washer, plain 1/4
7	24 086 41-S	2	Screw, phillips head 11-16x1/2"	27	48 154 02-S		Clip, cable
8	X-22-11-S		Washer, lock 1/4"	28	24 126 71-S		Bracket, stator wire
9	24 025 03-S		Flywheel	29	24 755 79-S		Kit, chopper screen (incl. 15-19)
10	12 132 02-S	2	Spark Plug	*	24 176 16-S		Harness, wiring
11	X-42-15-S		Key	*	24 518 12-S		Lead, black (5"-12 gauge - insulated grip barrel eyelet terminals)
12	12 468 03-S		Washer, plain 3/8.				Screw, set (adjusts grass scraper blade)
13	12 086 14-S		Screw, hex. flange M10x1.5x46				
14	24 157 03-S		Fan				
15	24 468 11-S	4	Washer, spring 10 mm				
16	24 112 14-S	4	Spacer, grass screen				
17	24 141 06-S		Ring, support				
18	24 162 25-S		Screen, grass				
19	X-25-53-S	4	Washer, plain 1/4"				
20	M-603100-S	4	Screw, hex. head.				

Obtain Parts from Kohler

* Not illustrated



Blower Housing & Baffles (Kohler CH25S PS68656)

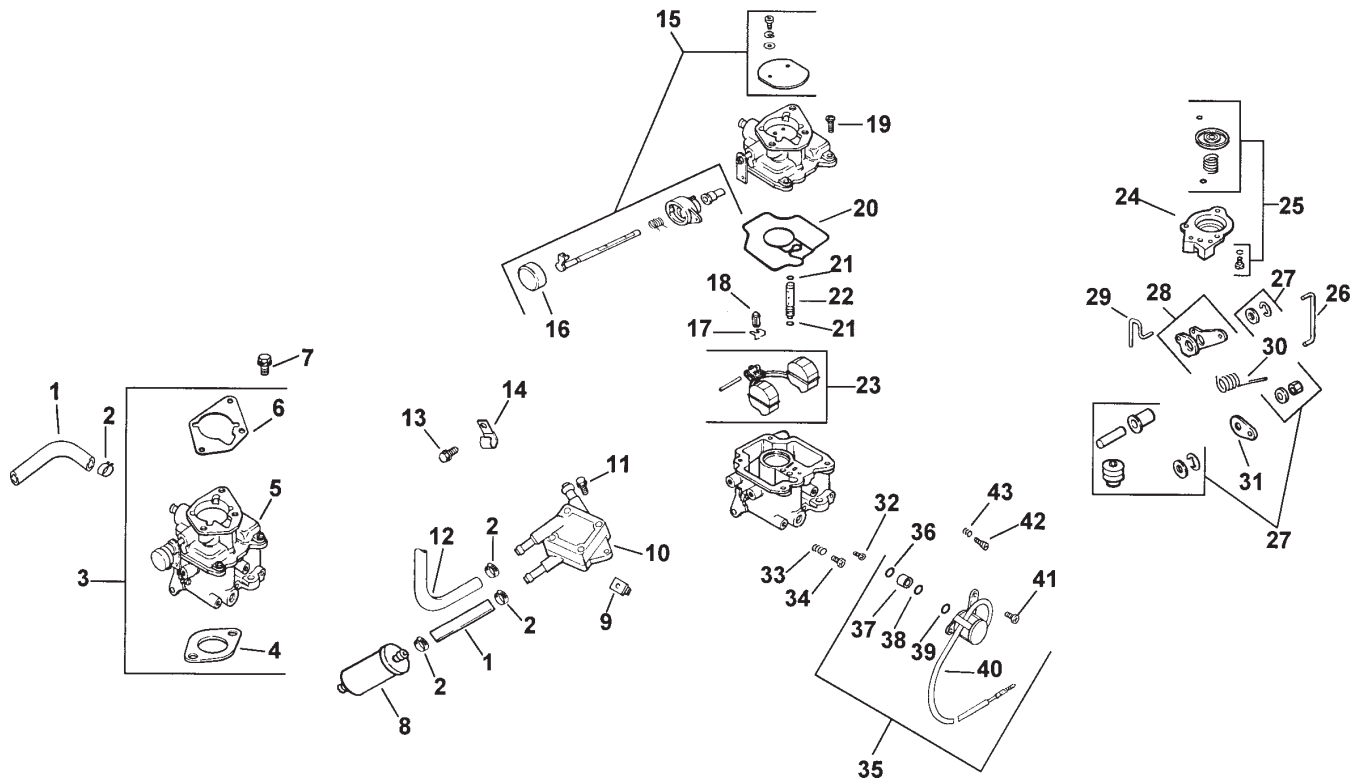
Ref. No.	Part No.	Qty.	Description
1	54 027 05-S		Housing, blower assembly (Incl. 2-4)
2	25 088 43-S		Screw, set
3	24 100 01-S	4	Nut, plastic
4	24 100 02-S	3	Nut, plastic
5	M-551016-S		Screw, hex. flange M5x0.8x16
6	M-545016-S	4	Screw, hex flange M5x0.8x16
7	M-545020-S	2	Screw, hex flange M5x0.8x20
8	24 146 11-S		Plate, backing - #2 side
9	M-645016-S		Screw, hex. flange M6x1.0x16
10	24 063 28-S		Baffle, cylinder barrel - #2 side
11	24 063 17-S		Baffle, valley - #2 side
12	M-545010-S	2	Screw, hex. flange M5x0.8x10
13	24 063 24-S		Baffle, valley - #1 side
14	24 063 30-S		Baffle, cylinder barrel- #1 side

Ref. No.	Part No.	Qty.	Description
15	24 146 08-S		Plate, backing- #1 side
*	24 113 09-S		Decal, horsepower

PROTOTYPE

Obtain Parts from Kohler

* Not illustrated



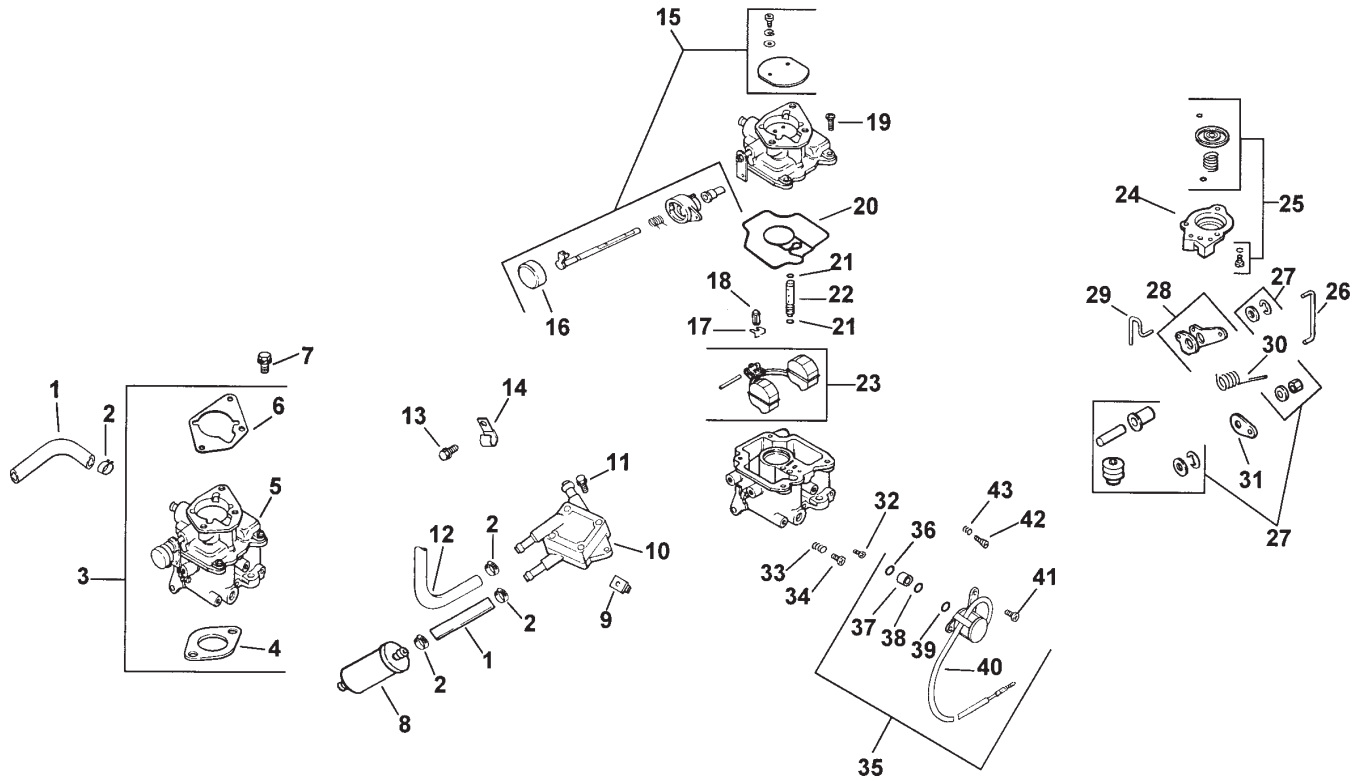
Fuel System (Kohler CH25S PS68656)

Ref. No.	Part No.	Qty.	Description
1	25 353 10	2	Line, fuel 9"
2	X-426-9	6	Clamp, hose
3	24 853 34		Kit, carburetor w/gasket (Includes 4-6)
4	24 041 06		Gasket, air cleaner
**5	24 053 34		Carburetor assembly (Includes 15-43 and carburetor repair kit 24 757 03)
6	24 041 17		Gasket, carburetor
7	M-0651030	2	Screw, hex. flange M6x1.0x30
8	24 050 02		Filter, fuel
9	24 100 01	2	Nut, plastic
10	24 393 04		Pump, fuel - pulse
11	24 086 12	2	Screw, hex. cap 18 mm
12	24 353 02		Line, fuel 15-1/2"
13	M-0650012		Screw, hex. flange M6x1.0x10
14	24 154 01		Clip, cable
15	24 757 07		Kit, choke repair (Includes 16)
16	24 173 02		Cap, choke lever
17	24 154 01		Clip, inlet needle valve
18	24 462 01		Valve, inlet needle

Ref. No.	Part No.	Qty.	Description
19	24 086 09	4	Screw, carburetor body
20	24 041 09		Gasket, carburetor body
21	24 153 02	2	O-Ring, slow jet
22	24 337 29		Jet, slow
23	24 757 02		Kit, float repair
24	24 081 05		Housing, pump
25	24 757 08		Kit, repair - accelerator pump seal & bushing)
26	24 079 07		Linkage, rod
27	24 757 09		Kit, repair - accelerator pump diaphragm
28	24 090 16		Lever, linkage
29	24 079 06		Linkage, rod
30	24 089 27		Spring, linkage
31	24 090 15		Lever, linkage
32	24 337 30		Jet, main
33	24 089 11		Spring, idle adjust
34	24 368 01		Needle, idle adjust
35	24 757 01		Kit, solenoid assembly (Includes 36-41)
36	24 153 06		O-Ring, solenoid
37	24 521 01		Seat, solenoid
38	24 153 05		O-Ring, solenoid
39	24 153 04		O-Ring, solenoid
40	24 435 01		Solenoid

Obtain Parts from Kohler

** For Information Only - Not Available Separately.

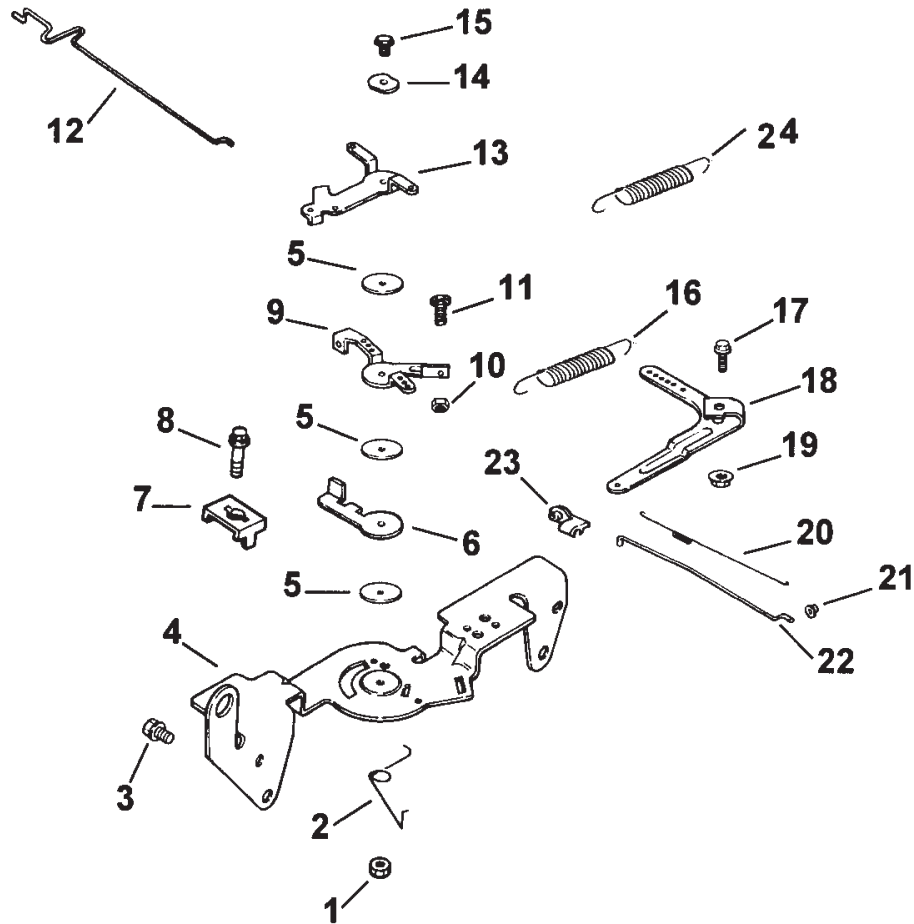


Fuel System – Continued (Kohler CH25S PS68656)

Ref. No.	Part No.	Qty.	Description	Ref. No.	Part No.	Qty.	Description
41	24 086 07	2	Screw, solenoid				
42	24 086 10		Screw, idle speed adjust				
43	24 089 10		Spring, idle speed adjust				
*	24 757 03		Kit, carburetor repair				

PROTOTYPE

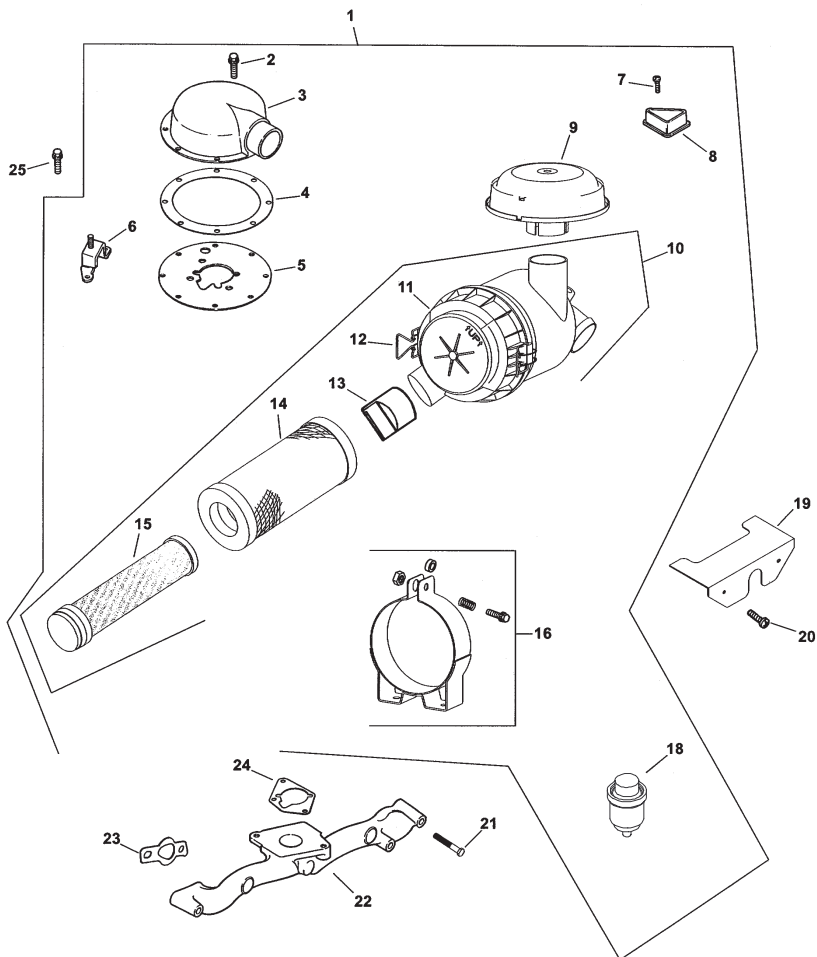
Obtain Parts from Kohler
 * Not illustrated



Engine Controls (Kohler CH25S PS68656)

Ref. No.	Part No.	Qty.	Description	Ref. No.	Part No.	Qty.	Description
1	M-547050-S		Nut, hex. lock M5x0.8	20	24 089 01-S		Spring, linkage
2	24 089 03-S		Spring, choke return	21	25 158 08-S		Bushing, linkage retaining
3	M-645016-S	4	Screw, hex. flange M6x1.0x16	22	24 079 01-S		Linkage, throttle
4	24 126 56-S		Bracket, control	23	25 158 11-S		Bushing, throttle linkage
5	24 468 01-S	3	Washer, plain 1/4	24	24 089 51-S		Spring, governor
6	24 090 07-S		Lever, throttle actuator				
7	12 237 01-S	2	Clamp, cable				
8	M-545016-S	3	Screw hex. flange M5x0.8x16				
9	24 090 03-S		Lever, throttle control				
10	M-446030-S		Nut, hex. flange M4x0.7				
11	M-401030-S		Screw, hex. flange M4x0.7x30				
12	24 079 02-S		Linkage, choke				
13	24 090 05-S		Lever, choke				
14	41 468 03-S		Washer, spring 1/4				
15	M-545020-S		Screw, hex. flange M5x0.8x20				
16	24 089 15-S		Spring, governor				
17	SM-642025-S		Screw, hex. flange M6x1.0x25				
18	24 090 14-S		Lever, governor				
19	M-641060-S		Nut, hex. flange M6x1.0				

Obtain Parts from Kohler



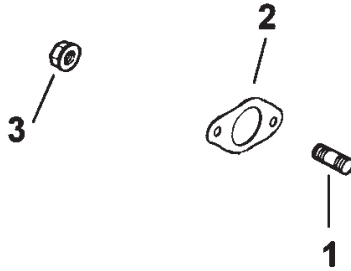
Air Intake / Filtration (Kohler CH25S PS68656)

Ref. No.	Part No.	Qty.	Description
1	24 743 26-S		Kit, heavy duty air cleaner (Includes 2-18)
2	M-645016-S	7	Screw, hex. flange M6x1.0x16
3	24 029 28-S		Adapter, air intake
4	24 041 38-S		Gasket, air cleaner adapter
5	24 029 35-S		Plate, adapter
6	24 126 21-S		Bracket, air cleaner base
7	X-67-3-S	2	Screw, slottrd hex. head
8	24 096 17-S	2	Cover, blower housing
9	25 324 02-S		Hood, air cleaner (5-1/4")
10	25 048 07-S		Cleaner assembly, air (incl. 11-15)
11	25 096 06-S		Cover assembly
12	25 154 05-S	2	Clip
13	24 462 07-S		Vavle, dust ejector
14	25 083 01-S		Element, air filter-primary
15	25 083 04-S		Element, air filter-safety
16	25 126 02-S		Bracket assembly,

Ref. No.	Part No.	Qty.	Description
17	25 139 20-S		air cleaner Plug, pipe
18	25 755 24-S		Kit, air filter gauge
19	24 314 25-S		Shield, debris
20	24 086 06-S	2	Screw, phillips head 11-16x3/4"
21	M-651055-S	4	Screw, hex. flange M6x1.0x55
22	24 164 14-S		Manifold, intake
23	24 041 01-S	2	Gasket, intake manifold
24	24 041 06-S		Gasket, air cleaner base
25	M-639016-S	3	Screw, hex. flange M6x1.0x16
*	25 113 27-S		Decal, air cleaner

Obtain Parts from Kohler

* Not illustrated



Exhaust (Kohler CH25S PS68656)

Ref. No.	Part No.	Qty.	Description
1	25 072 04-S	4	Stud, exhaust manifold M8x1.25x33
2	24 041 02-S	2	Gasket, exhaust
3	M-841080-S	4	Nut, muffler mounting M8x1.25
*	24 782 04-S		Miniblock
*	24 755 23-S		Gasket Set

Ref. No.	Part No.	Qty.	Description

PROTOTYPE

Obtain Parts from Kohler
* Not illustrated



PROTOTYPE