



## Four Wheel Drive Kit

### Groundsmaster<sup>®</sup> 580D

Model No. 30599—21000001 and Up

## Parts Catalog

### Ordering Replacement Parts

To order replacement parts, please supply: the part number, the quantity, and the description of each part desired.

### Understanding Reference Numbers

Each identified part in an illustration has a reference number. The reference number for a part also appears in the parts list, along with other information about the part.

This catalog uses two special reference number formats, one to indicate parts in a service assembly and another to indicate the quantity of a given part in an illustration.

### Service Assembly Reference Numbers

Parts in service assemblies have reference numbers in the form **a:b**. The **a** represents the reference number of the entire service assembly and the **b** represents a sequential number unique to each part within the service assembly.

For example, a wheel assembly might be identified by reference number **6**, the tire by **6:1**, the valve by **6:2**, and the wheel by **6:3**. When you order the assembly identified by reference number **6**, you receive all parts identified by reference numbers **6:1**, **6:2**, and **6:3**. However, you may also order any part individually.

Reference numbers of this type appear in illustrations and in part lists.

### Reference Numbers Indicating Quantity

In an illustration, if a reference number indicates more than one part, the reference number has the form **nX y**. The **n** represents the quantity of the part, the **X** is the multiplication symbol, and the **y** represents the reference number.

For example, in an illustration, the reference number **2X 37** means that two of the parts identified by reference number **37** are indicated.

## Contents

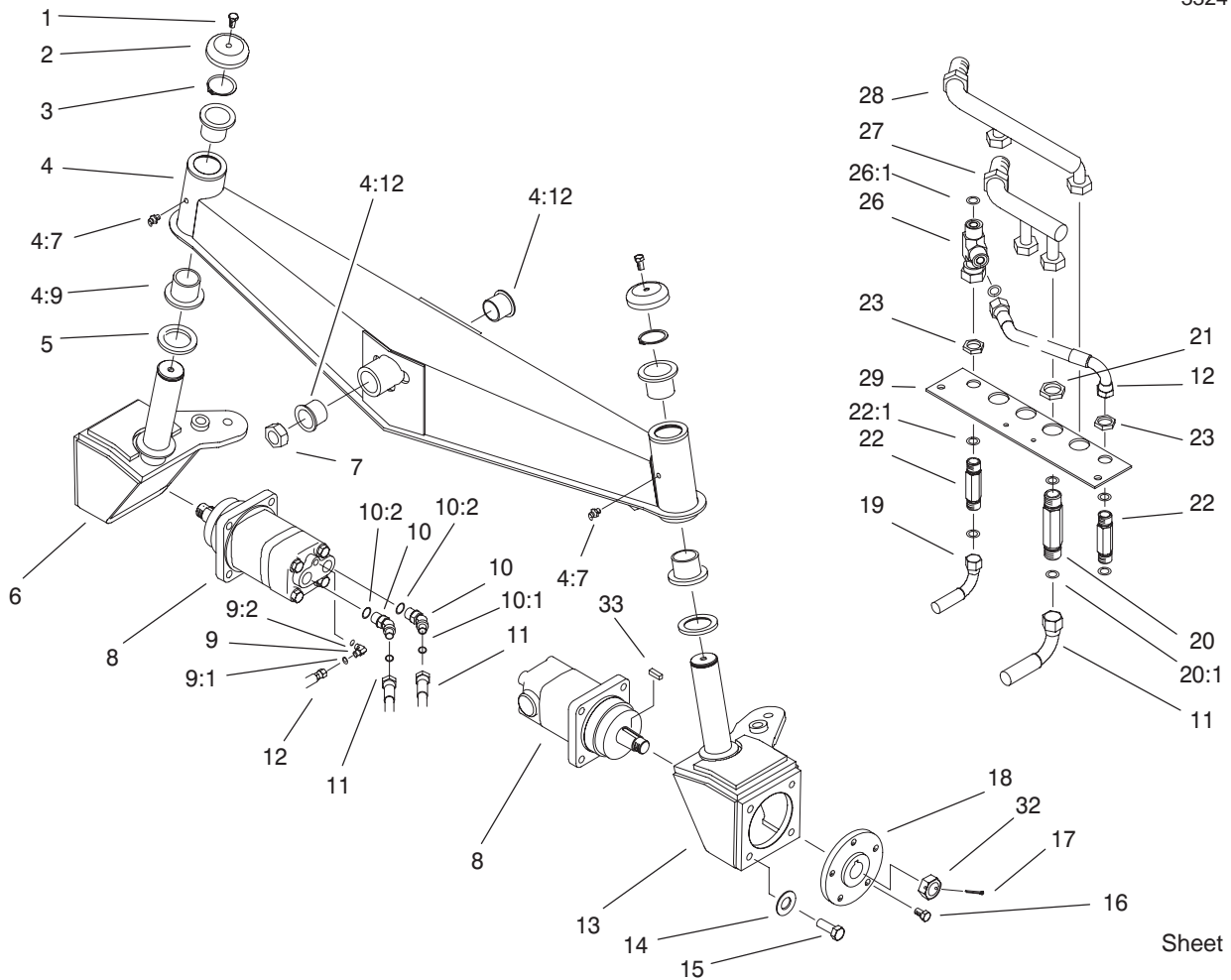
Description	Page	Description	Page
Axle Assembly .....	3	Control Block Assembly No. 100-3921 .....	6
Hydraulics, Guard, and Panels Assembly .....	4	4WD Decal Placement .....	7

## Part Description Abbreviations

Part descriptions in this catalog may include the following abbreviations.

Abbreviation	Meaning	Abbreviation	Meaning
AR .....	as required	HYD .....	hydraulic
ASM .....	assembly	INC .....	incorporated
CARR .....	carriage	LH .....	left hand
DEG .....	degrees	NI .....	nylon insert
FH .....	flat head	PPH .....	Phillips pan head
GA .....	gauge	PTH .....	Phillips truss head
HF .....	hex flange	PTO .....	power take off
HH .....	hex head	RH .....	right hand
HHF .....	hex head flange	SFH .....	slotted fillister head
HLH .....	hex lag head	SHH .....	slotted hex head
HJ .....	hex jam	SQH .....	square head
HOC .....	height-of-cut	SHWH .....	slotted hex washer head
HS .....	hex socket	SPH .....	slotted pan head
HSBH .....	hex socket button head	SRH .....	slotted round head
HSFH .....	hex socket flat head	STD .....	standard
HSH .....	hex socket head	TAP .....	self tapping
HWH .....	hex washer head	TTH .....	Torx truss head
HWHTF .....	hex washer head thread forming	WH .....	wing head

PROTOTYPE



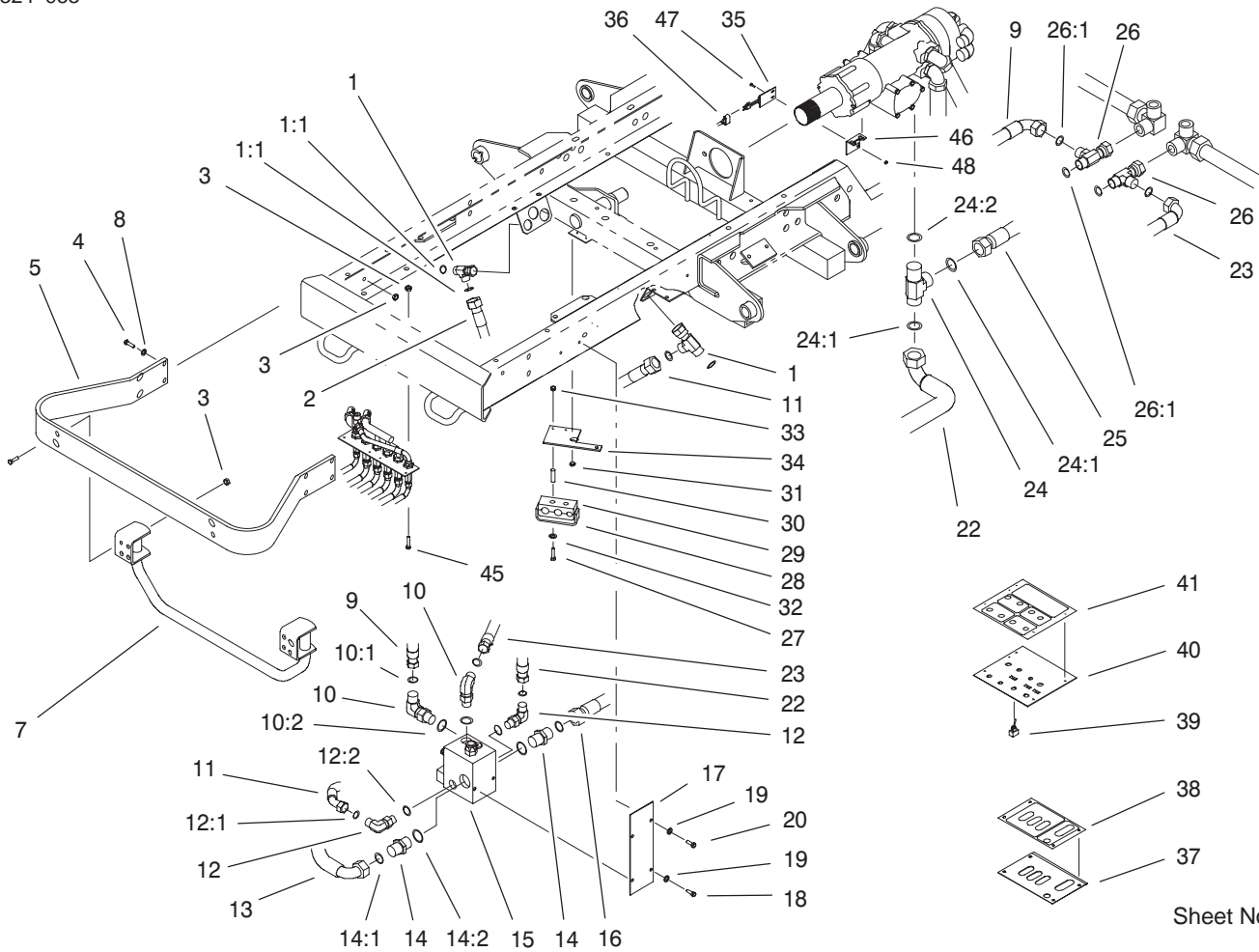
Sheet No.: 2

## Axle Assembly

Ref. No.	Part No.	Qty.	Description
1	3234-12	2	Screw-HHF
2	100-3362	2	Cap-Spindle
3	100-4196	2	Ring-Retaining
4	100-3364-01	1	Rear Axle ASM
4:7	302-5	3	Fitting-Grease
4:9	100-2506	4	Bushing-Castor
4:12	69-6470	2	Bushing-Castor
5	100-2508	2	Washer-Thrust
6	99-8899-01	1	LH Motor Housing ASM
7	3296-68	1	Nut-Lock NI
8	100-3908	2	Motor-Hydraulic
*8:1	100-6167	1	Kit-Seal
9	340-97	2	Fitting-HYD, 90°
9:1	237-22	1	O-Ring
9:2	237-78	1	O-Ring
10	340-14	4	Fitting-HYD, 45°
10:1	237-65	1	O-Ring
10:2	237-80	1	O-Ring
11	100-3910	4	Hose
12	100-3911	1	Hose
13	100-1531-01	1	RH Motor Housing ASM
14	3253-7	8	Washer-Lock
15	325-5	8	Screw-HH
16	83-2720	10	Lug-Bolt

Ref. No.	Part No.	Qty.	Description
17	3272-13	2	Pin-Cotter
18	100-8008-03	2	Wheel Hub
19	100-3912	2	Hose
20	100-8001	4	Fitting-Bulkhead
20:1	237-65	2	O-Ring
21	340-74	4	Locknut-Bulkhead
22	100-8000	2	Fitting-Bulkhead
22:1	237-22	2	O-Ring
23	340-70	2	Locknut-Bulkhead
26	340-115	1	Fitting-Tee
26:1	237-22	2	O-Ring
27	100-2543	1	Inner Tube ASM
28	100-2544	1	Outer Tube ASM
29	100-3920-01	1	Bracket-Bulkhead
32	11-5800	2	Nut-Slotted
33	11-5790	2	Key

\* Not illustrated



Sheet No.: 3

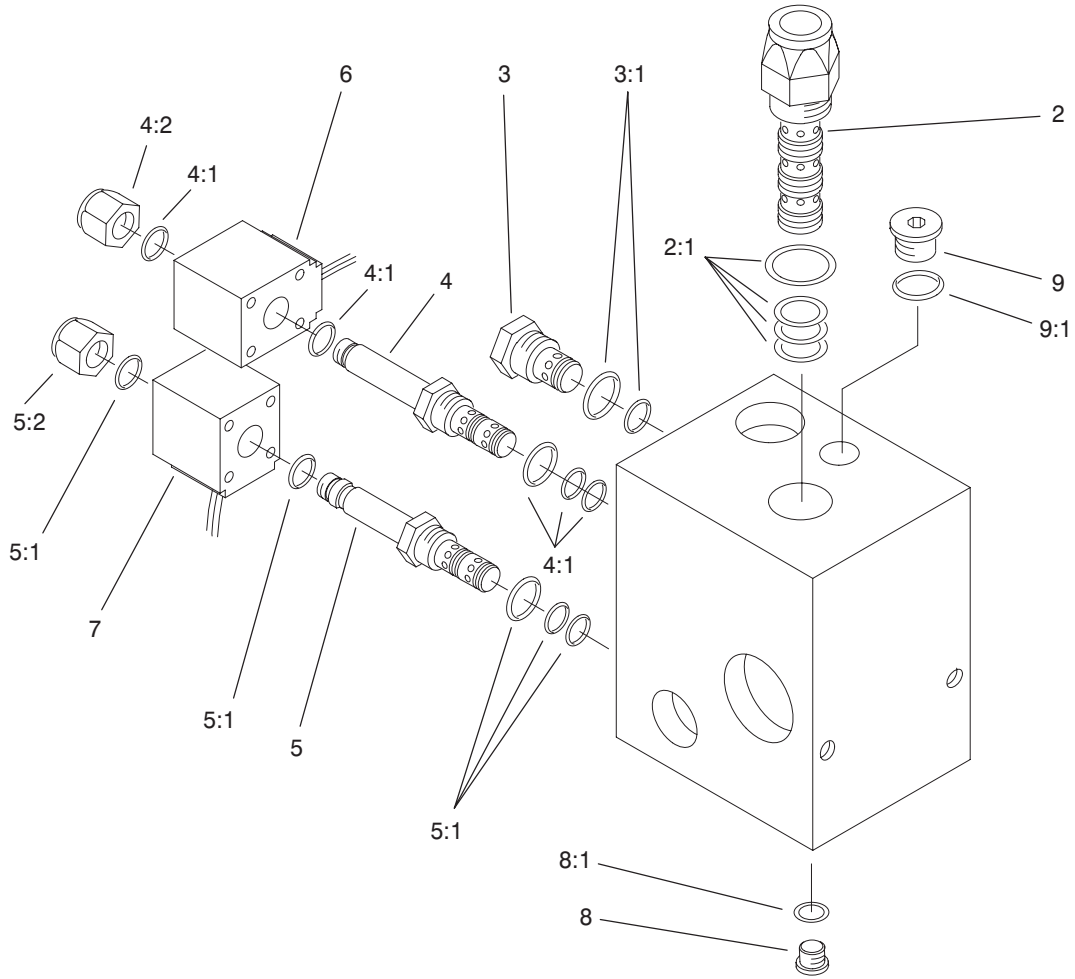
## Hydraulics, Guard, and Panels Assembly

Ref. No.	Part No.	Qty.	Description
1	340-115	2	Fitting-Tee
1:1	237-22	2	O-Ring
2	100-3915	1	Hose
3	3296-39	14	Nut-Lock, NI
4	323-7	12	Screw-HH
5	100-4166-03	1	Bracket-Bumper
7	92-6050-03	1	Guard ASM
8	3256-24	8	Washer-Flat
9	100-3916	1	Hose
10	340-98	2	Fitting-HYD, 90°
10:1	237-79	1	O-Ring
10:2	237-30	1	O-Ring
11	76-9570	1	Hose ASM
12	340-77	2	Fitting-HYD, 90°
12:1	237-22	1	O-Ring
12:2	237-42	1	O-Ring
13	100-3914	1	Hose
14	340-9	2	Fitting-Straight
14:1	237-58	1	O-Ring
14:2	237-81	1	O-Ring
15	100-3921	1	Block-Control, 4wd
16	100-3913	1	Hose
17	100-2546-01	1	Bracket-Block
18	322-2	2	Screw-HH
19	3253-4	4	Washer-Lock
20	32104-32	2	Screw-HH

Ref. No.	Part No.	Qty.	Description
22	100-3919	1	Hose
23	100-3917	1	Hose
24	340-86	1	Fitting-Tee, HYD
24:1	237-22	2	O-Ring
24:2	237-42	1	O-Ring
25	100-4150	1	Hose
26	92-4748	2	Adapter-HYD, Tee
26:1	237-58	2	O-Ring
27	321-15	2	Screw-HH
28	94-6772-01	1	Retainer
29	74-2710	2	Clamp-Hose
30	74-2730	2	Tube
31	32128-21	2	Nut-HF
32	3256-22	2	Washer-Flat
33	32128-32	2	Nut-HHF
34	100-2545-01	1	Bracket - Hose
35	100-6175	1	Switch
36	100-4199	1	Harness-Wire
37	100-3393-03	1	Plate-Lift Lever
38	100-3394	1	Panel-Deck Lift
39	100-4198	1	Switch-Toggle
40	100-3392-03	1	Plate-Control
41	100-3395	1	Panel-Control
*42	3290-379	8	Tie-Cable
45	323-6	2	Screw-HH
46	100-6173-03	1	Bracket-Switch

\* Not illustrated





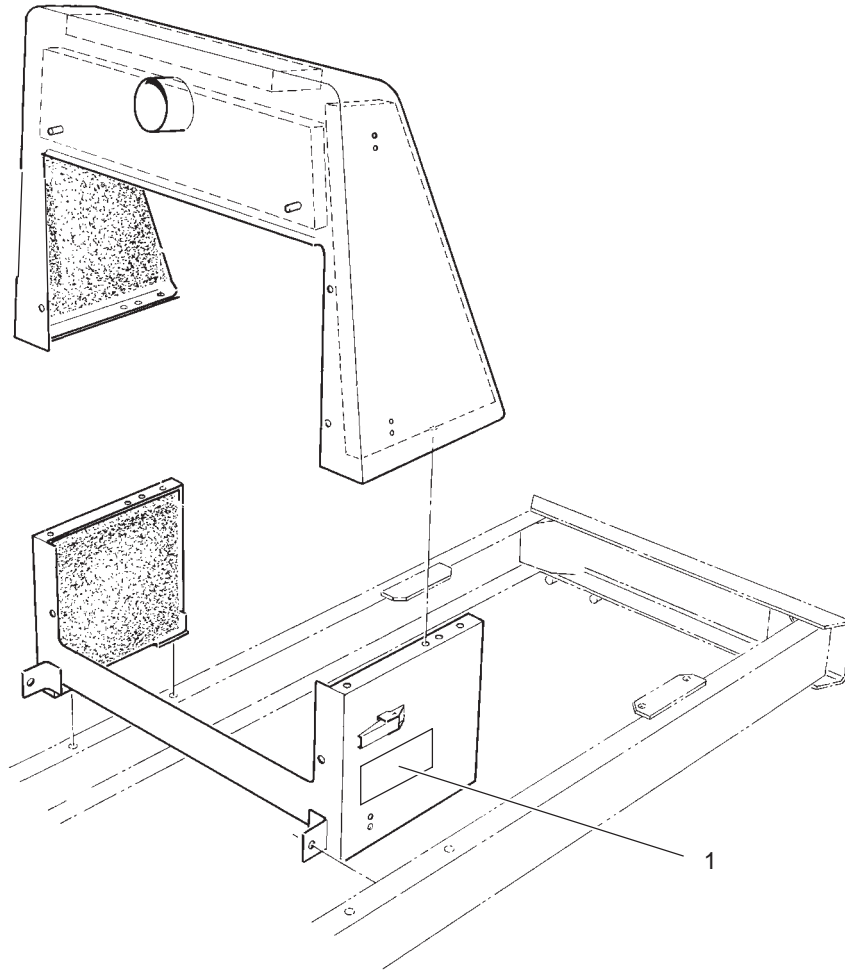
Sheet No.: A1  
T-3312

## Control Block Assembly No. 100-3921

Ref. No.	Part No.	Qty.	Description
2	100-6169	1	Valve-Solenoid
2:1	100-6156	1	Kit-Seal
3	95-6014	1	Valve-Check
3:1	75-2080	1	Kit-Seal
4	95-5639	1	Valve-Solenoid
4:1	95-5643	1	Seal Kit
4:2	3219-10	1	Nut
5	95-5638	1	Valve-Solenoid
5:1	92-3049	1	Seal Kit
5:2	3220-4	1	Nut
6	83-2010	1	Coil-Valve
7	100-3389	1	Coil ASM
8	353-991	2	Plug-Hex, Hollow
8:1	237-156	1	O-Ring
9	353-988	1	Plug-Hex, Hollow
9:1	237-79	1	O-Ring

Ref. No.	Part No.	Qty.	Description

PROTOTYPE



Sheet No.:4  
T-3764

### 4WD Decal Placement

Ref. No.	Part No.	Qty.	Description
1	100-8031	2	Decal-4wd

Ref. No.	Part No.	Qty.	Description
<p style="font-size: 48px; opacity: 0.5; font-family: sans-serif;">PROTOTYPE</p>			



*PROTOTYPE*