



44" Vac-Bagger
Wheel Horse® Lawn Tractor Attachment
79102-20000001 & Up

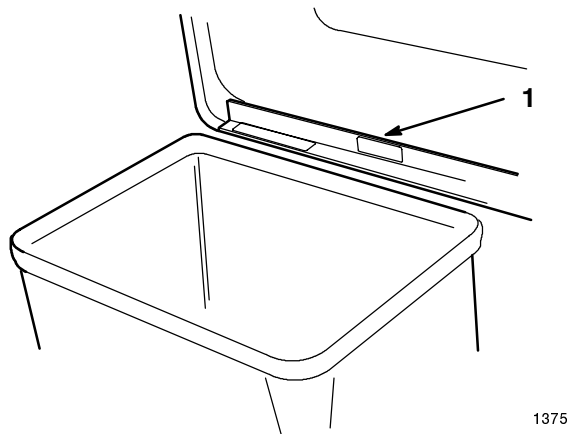
PROTOTYPE

Operator's Manual

Introduction

We want you to be completely satisfied with your new product, so feel free to contact your local Authorized Service Dealer for help with service, genuine replacement parts, or other information you may require.

Whenever you contact your Authorized Service Dealer or the factory, always know the model and serial numbers of your product. These numbers will help the Service Dealer or Service Representative provide exact information about your specific product. You will find the model and serial number plate located in a unique place on the product as shown below.



1. Model and Serial Number Plate

For your convenience, write the product model and serial numbers in the space below.

Model No: _____
Serial No. _____

PROTOTYPE

The warning system in this manual identifies potential hazards and has special safety messages that help you and others avoid personal injury, even death. DANGER, WARNING and CAUTION are signal words used to identify the level of hazard. However, regardless of the hazard, be extremely careful.

DANGER signals an extreme hazard that will cause serious injury or death if the recommended precautions are not followed.

WARNING signals a hazard that may cause serious injury or death if the recommended precautions are not followed.

CAUTION signals a hazard that may cause minor or moderate injury if the recommended precautions are not followed.

Two other words are also used to highlight information. “Important” calls attention to special mechanical information and “Note” emphasizes general information worthy of special attention.

The left and right side of the machine is determined by sitting on the seat in the normal operator’s position.

Contents

	Page		Page
Safety and Instruction Decals	2	Maintenance	21
Installation	3	Inspecting the Bagger Attachment	21
Loose Parts	3	Inspecting the Mower Blades	21
Preparing the Mower	5	Caring for the Grass Bags	21
Installing the Vac-Bagger onto the Tractor	8	Cleaning the Bagger Attachment	21
Removing the Bagger	12	Storing the Bagger Attachment	22
Operation	18		
Using the Full Bag Tester	18		
Emptying the Grass Bags	18		
Clearing Obstructions From Bagger	19		
Operating and Bagging Tips	19		

PROTOTYPE

Safety and Instruction Decals



Safety decals and instructions are easily visible to the operator and are located near any area of potential danger. Replace any decal that is damaged or lost.

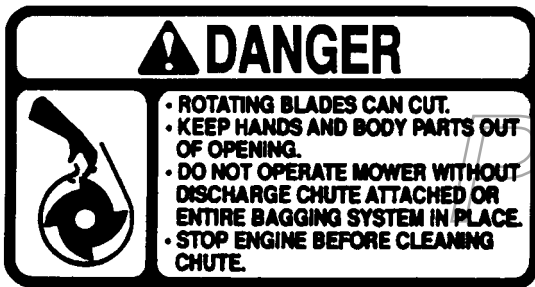
INSIDE BAGGER HINGE FRAME (Part No. 92-7113)



MOLDED INTO BELT SHIELD



MOLDED INTO BELT SHIELD



MOLDED INTO BELT SHIELD



Installation

Loose Parts

Note: Use the chart below to identify parts used for assembly.

DESCRIPTION	QTY.	USE
Blade (hi-lift)	3	Replace standard lift blades
Grass baffle-front	1	Install front grass baffle
Carriage bolt 5/16-18 x 7/8"	3	
Carriage bolt 5/16-18 x 1/2"	1	
Lock nut 5/16"	3	
Lock nut (thin) 5/16"	1	
Grass baffle-rear	1	Install rear grass baffle and grass ring
Grass ring	1	
Bolt 1/4-20 x 3/4"	2	
Lock nut 1/4"	2	
Carriage bolt 5/16-18 x 7/8"	3	
Carriage bolt 5/16-18 x 2-1/2"	1	
Latch tube	1	
Lock nut 5/16"	4	
Pivot support	1	Install blower pivot support
Pivot bracket	1	
Spacer Tube	1	
Carriage Bolt 5/16-18 x 4-1/2"	1	
Bolt 5/16-18 x 7/8"	1	
Washer 5/16"	2	
Lock nut 5/16"	4	
Cover	1	Assemble the bagger
Indicator rod	1	
Handle	1	
Jam nut 1/4"	1	
Clips	2	
Screw 1/4-20 x 3/4"	2	
Lock nut 1/4"	4	
Frame assembly	1	

DESCRIPTION	QTY.	USE
Pulley	1	Install the blower
Blower assembly	1	
Belt	1	
Blower belt cover	1	
Washer	4	
Knobs	2	
Quick-attach bracket	1	Install the bagger assembly
Discharge Tube	1	
Bolt 3/8-16 x 2"	2	
Washer	2	
Spacer	2	
Lock nut 3/8"	2	
Hair pin cotter	1	
Grass bags	2	
Leveling Brackets	2	Mount mower onto tractor
Operator's Manual	1	Read before operating

PROTOTYPE

Preparing the Mower

Remove the Recycling Baffles

If you have a recycling mower deck, you must remove the recycling baffles to use the vac bagger.

1. Thoroughly clean the mower.
2. Remove the knobs and washers from the left and right side baffles (Fig. 1). Lift the baffles from the deck.

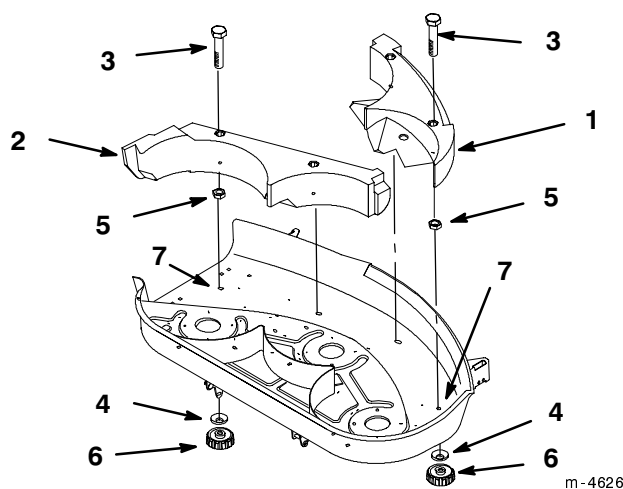


Figure 1

- | | |
|---|------------------|
| 1. Baffle left side | 5. 5/16" locknut |
| 2. Baffle right side | 6. Knob |
| 3. 5/16 x 1-1/4" bolt | 7. Slotted hole |
| 4. Belleville washer—concave side toward deck surface | |

Note: Save hardware for use when installing the baffles.

! DANGER

POTENTIAL HAZARD

- Open holes in the mower expose you and others to thrown debris.

WHAT CAN HAPPEN

- Debris thrown out of holes in the mower can cause injury.

HOW TO AVOID THE HAZARD

- Never operate the mower without hardware mounted in all holes in the mower.
- Install hardware in the mounting holes when the recycle baffle is removed.

3. Install (2) 3/8-16 x 3/4" carriage bolts (from the underside of the mower), (2) 1/2" washers, and (2) 3/8" locknuts in the (2) open slotted holes of the mower shown in Figure 1.

Note: Loose hardware is furnished with the mower deck assembly.

Install Hi-lift Blades

1. Install the hi-lift blades from the bagger in place of the standard blades. Refer to Mower Operator's Manual; Cutting Blade.

Note: The hi-lift blades are also used for Recycler® mowers.

PROTOTYPE

Remove the Discharge Chute

1. Remove the discharge chute and mounting brackets from the mower (Fig. 2).

Note: Save all parts and hardware for use when installing the discharge chute.

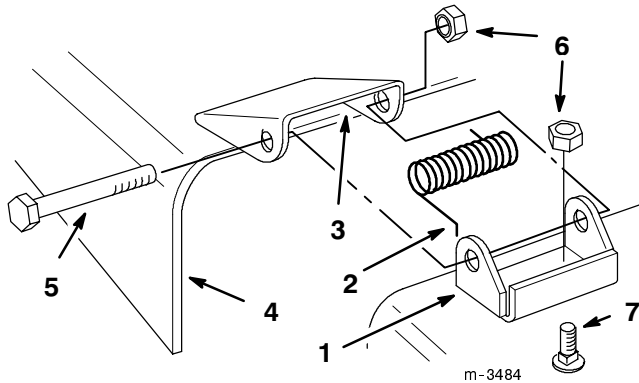


Figure 2

- | | |
|---------------------|------------------|
| 1. Bracket | 5. Bolt |
| 2. Spring hook end | 6. Locknut |
| 3. Space for spring | 7. Carriage bolt |
| 4. Discharge chute | |

Install the Grass Baffles

1. Place the front grass baffle inside the front edge of the mower. The baffle plate should rest on the front edge of the mower. The right tab on the baffle should extend 1/8" outside of the right edge of the mower (Fig. 3). Use a clamp to hold the baffle in place.
2. Mark where the holes in the baffle are and remove the clamp and grass baffle. Drill (4) 11/32" holes (Fig. 3).
3. Install the grass baffle inside front edge of the mower using (3) 5/16 x 7/8" carriage bolts and (3) 5/16" lock nuts along the front. At the right side use the 5/16 x 1/2" carriage bolt and thin 5/16" lock nut (Fig. 3).

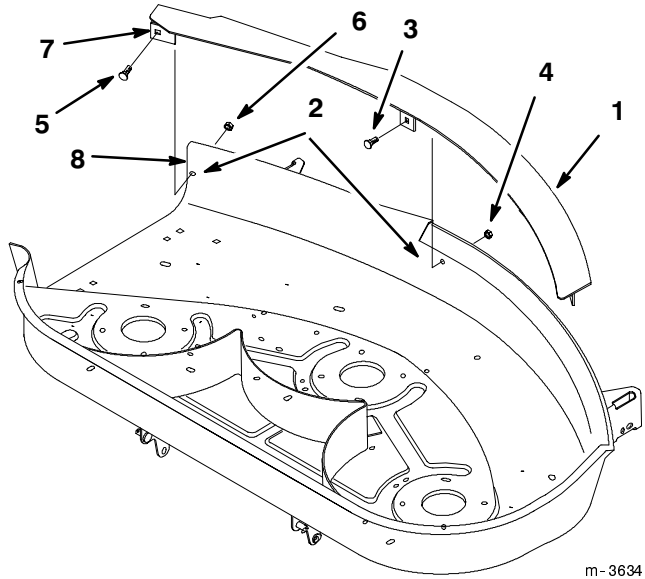


Figure 3

- | | |
|------------------------------|------------------------------|
| 1. Front grass baffle | 5. 5/16 x 1/2" carriage bolt |
| 2. Drill 11/32" hole | 6. 5/16" lock nut (thin) |
| 3. 5/16 x 7/8" carriage bolt | 7. Right tab on baffle |
| 4. 5/16" lock nut | 8. Right edge of mower |

4. Attach the rear grass baffle to the grass ring with (2) 5/16 x 7/8" carriage bolts and (2) 5/16" lock nuts (Fig. 4).
5. Install the rear grass baffle and grass ring inside the discharge chute area. Secure the rear grass baffle to the mower with a 5/16 x 7/8" carriage bolt and a 5/16 x 2-1/2" carriage bolt. Add the latch tube above the deck and secure with (2) 5/16" locknuts. Secure the grass ring to the mower with (2) 1/4 x 3/4" bolts and (2) 1/4" locknuts (Fig. 4).

PROTOTYPE

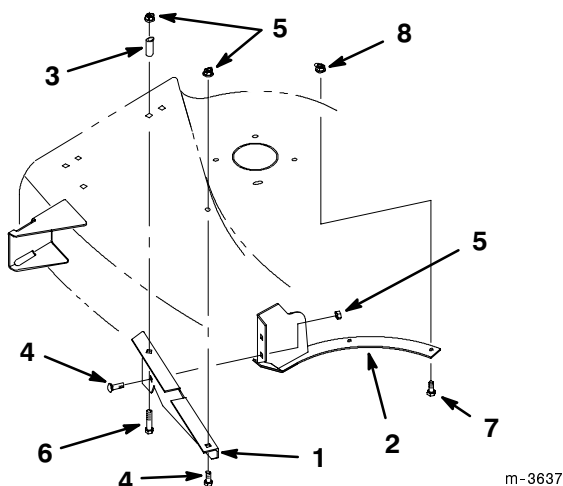


Figure 4

- | | |
|------------------------------|--------------------------------|
| 1. Rear grass baffle | 5. 5/16" lock nut |
| 2. Grass ring | 6. 5/16 x 2-1/2" carriage bolt |
| 3. Latch tube | 7. 1/4 x 3/4" screw |
| 4. 5/16 x 7/8" carriage bolt | 8. 1/4" lock nut |

6. Rotate the blades to make sure they do not hit the baffles or grass ring. Adjust baffles as required so the blades do not hit.

Install the Blower Pivot Support

1. Locate the pivot support on the mower over square holes near the discharge opening (Fig. 5).
2. Push the vertical side (front) of the pivot support against the front of the mower and clamp it snugly, making sure the top of the pivot support lies flat on the top of the mower.
3. Secure the pivot support to the top of the mower with a 5/16 x 4-1/2" bolt, spacer tube and 5/16 x 7/8" bolt (from the underside of mower) and 5/16" lock nuts (Fig. 5).
4. Secure the pivot bracket to the pivot support with (2) 5/16" washers and (2) 5/16" lock nuts (Fig. 5).

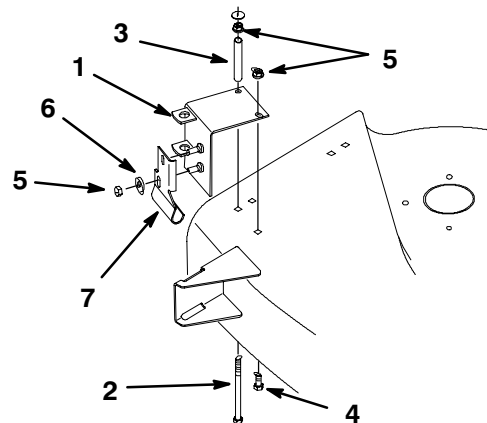


Figure 5

- | | |
|--------------------------------|-------------------|
| 1. Pivot support | 5. 5/16" lock nut |
| 2. 5/16 x 4-1/2" carriage bolt | 6. 5/16" washer |
| 3. Spacer Tube | 7. Pivot bracket |
| 4. 5/16 x 7/8" carriage bolt | |

Install the Blower Pulley onto Mower

1. Remove the mower belt cover from the right side pulley (Fig. 6).
- Note:** Save all parts and hardware.
2. Remove the spindle pulley nut. Block the blade with a piece of wood or some other device to stop it from turning while you remove the pulley nut.
 3. Thread the new blower pulley onto the spindle shaft in place of the pulley nut (Fig. 6). Torque pulley to 50 to 75 ft-lbs (68 to 102 N-m).

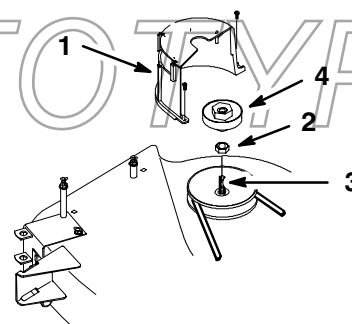


Figure 6

- | | |
|---------------|------------------|
| 1. Belt cover | 3. Spindle shaft |
| 2. Nut | 4. Blower pulley |

m-2017

2004

Installing the Vac-Bagger onto the Tractor

Assemble the Bagger

1. Install the “full-bag” indicator rod through the hole in the rubber seal and the slot in the bagger cover (Fig. 8). Mount the full-bag indicator rod against the bagger cover using two clips, 1/4 x 3/4” screws, and 1/4” lock nuts (Fig. 7).
2. Screw the jam nut completely onto the indicator rod (Fig. 8). Then screw the handle (Fig. 8) close to the jam nut so you can read the decal from the operator’s position. Tighten the jam nut up against the handle to lock it in place.

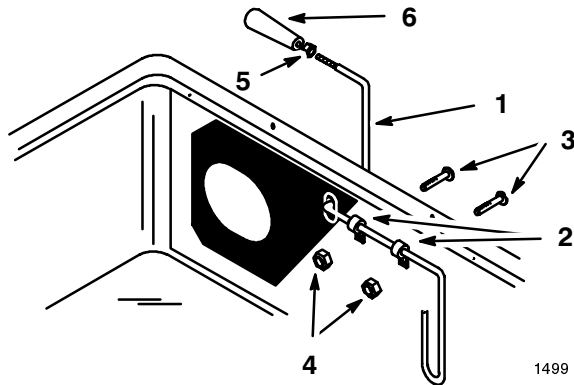


Figure 7

- | | |
|---------------------|------------------|
| 1. Indicator rod | 4. 1/4” lock nut |
| 2. Clips | 5. Jam nut |
| 3. 1/4 x 3/4” screw | 6. Handle |

3. Attach the frame assembly to the bagger cover with (2) 1/4” lock nuts (Fig. 8).

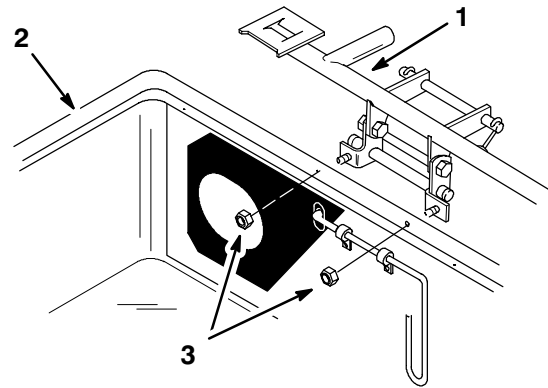


Figure 8

- | | |
|-------------------|------------------|
| 1. Frame assembly | 3. 1/4” lock nut |
| 2. Bagger cover | |

Tractor Bagger Mount

1. Install washers and spacers for bagger mount outside the tractor frame, using a 3/8 x 2” bolts and 3/8” lock nuts (Fig. 9).

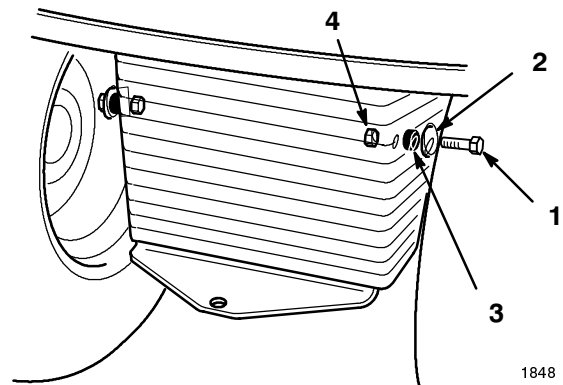


Figure 9

- | | |
|------------------|------------------|
| 1. 3/8 x 2” bolt | 3. Spacer |
| 2. Washer | 4. 3/8” lock nut |

Install the Blower Belt

1. Remove the metal plate from the previously removed belt cover (Fig. 10). Save mounting hardware.

Note: Save all parts and hardware for use when removing blower.

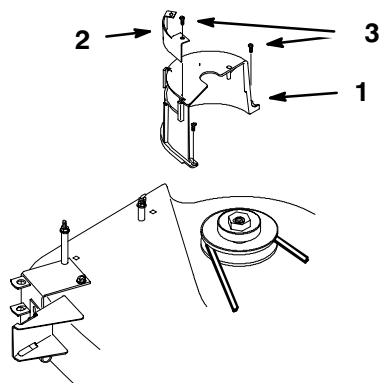


Figure 10

1. Belt cover
2. Metal plate
3. Screw (existing)

2. Slide the blower belt through opening in the belt cover and place around blower pulley (Fig. 11).
3. Install the belt cover using existing hardware (Fig. 11).

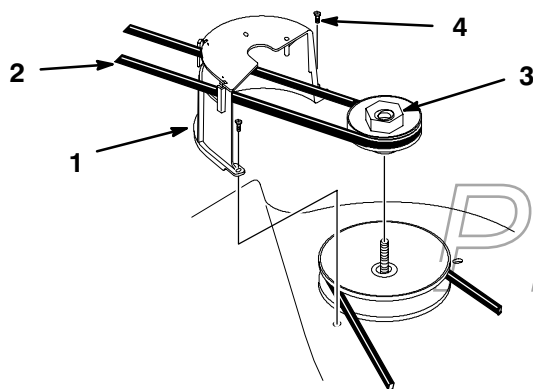


Figure 11

1. Belt cover
2. Blower belt
3. Blower pulley
4. Screw (existing)

4. Install the blower by lowering the pivot pin into the pivot support (Fig. 12).

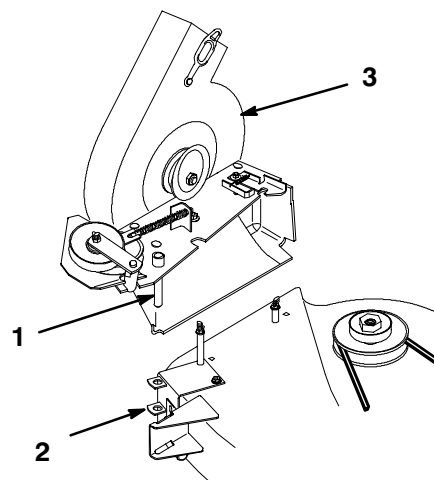


Figure 12

1. Pivot pin
2. Pivot support
3. Blower assembly

5. Open latch and swing the blower out away from the mower, install the blower belt around idler and blower pulleys as shown (Fig. 13).

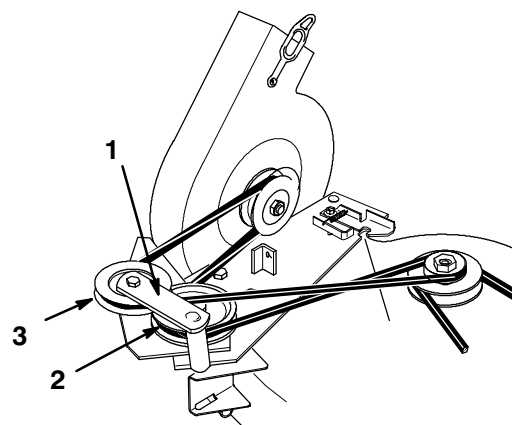


Figure 13

1. Idler pulley bracket and pulley
2. Top side of belt against bottom pulley
3. V-side of belt into top pulley

6. With the belt installed, swing the blower toward the mower until the blower latch locks over the pin at the back of the mower (Fig. 14).

IMPORTANT: You may have to lift the blower slightly for the latch to close. Make certain that the latch operates smoothly and closes completely.

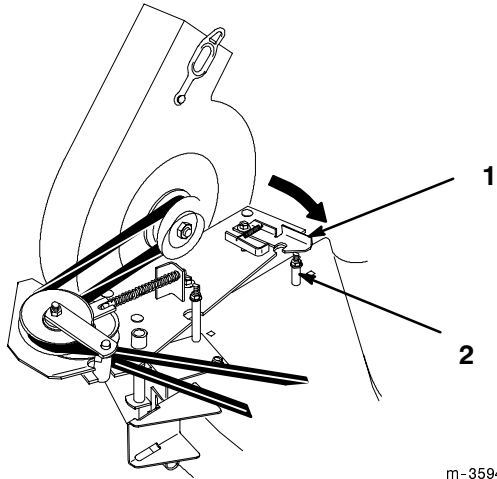


Figure 14

- 1. Blower latch
- 2. Pin

Install the Blower Belt Cover

- 7. Install the blower belt cover using (4) washers and (2) knobs (Fig. 15).

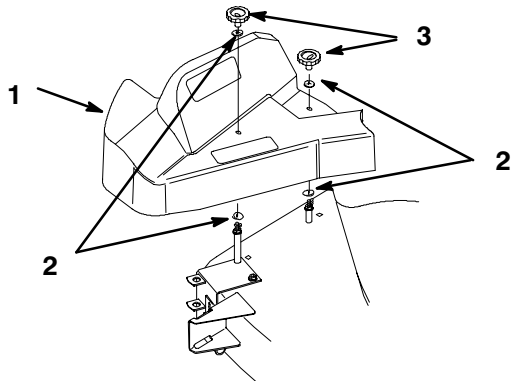


Figure 15

- 1. Mower belt cover
- 2. Washer
- 3. Knob

Install the Leveling Brackets

- 1. Install mower onto tractor. Refer to Mower Operator's Manual for instructions.
- 2. Replace the two left side mower leveling brackets (slotted) with two new leveling brackets (holes) (Fig. 16). Secure with existing washers and hair pin cotters (Fig. 16).

Note: Save slotted leveling brackets for use when blower is removed for side discharge operation.

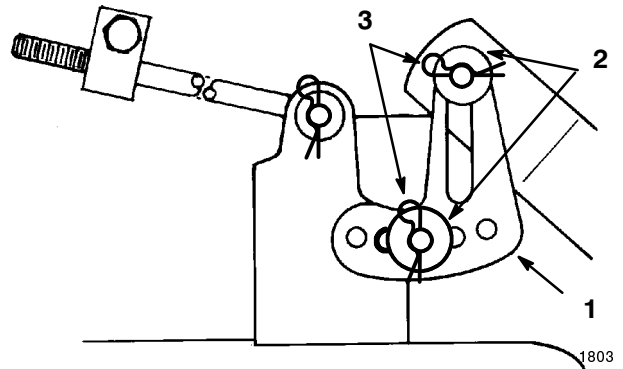


Figure 16

- 1. Slotted leveling bracket (2)
- 2. Washer
- 3. Hair pin cotter

- 3. Check mower level front-to-rear and side-to-side; refer to Mower Operator's Manual for instructions.

PROTOTYPE

Install the Bagger

1. Slide the bottom of the quick-attach bracket down into the hole in the hitch and hook the notches onto the spacers located inside the tractor frame (Fig. 17).
2. Slide the hair pin cotter through the hole at the bottom of the quick-attach bracket (Fig. 17).

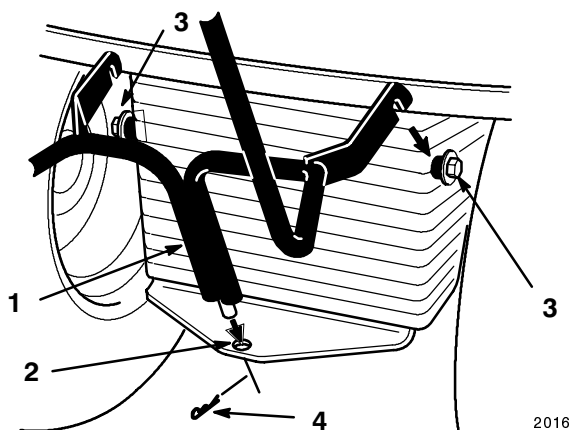


Figure 17

- | | |
|-------------------------|--------------------|
| 1. Quick-attach bracket | 3. Spacers |
| 2. Hole in hitch | 4. Hair pin cotter |

3. Tip the tractor seat forward.
4. Carefully lift the bagger top and slide it onto the quick-attach bracket (Fig. 18). The bagger top is easier to install if two people work together.

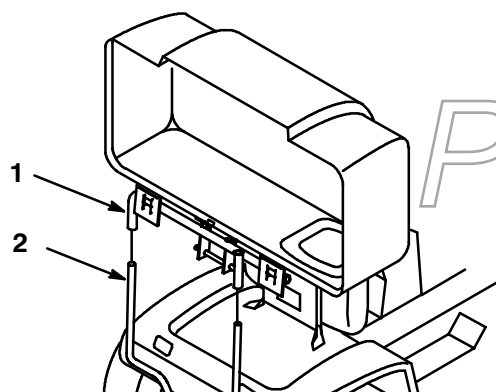


Figure 18

- | | |
|---------------|-------------------------|
| 1. Bagger top | 2. Quick-attach bracket |
|---------------|-------------------------|

CAUTION

POTENTIAL HAZARD

- The hinge frame on the bagger top is spring-loaded.

WHAT CAN HAPPEN

- If you remove the bagger top when it is closed (in the down position), the top may suddenly fly open and you or someone else may be bruised, pinched, or injured in another way.

HOW TO AVOID THE HAZARD

- Always open (raise) the bagger top before you remove or install it on the quick-attach bracket.

5. Install the bags by sliding the bag frame hooks onto the retaining brackets (Fig. 19).

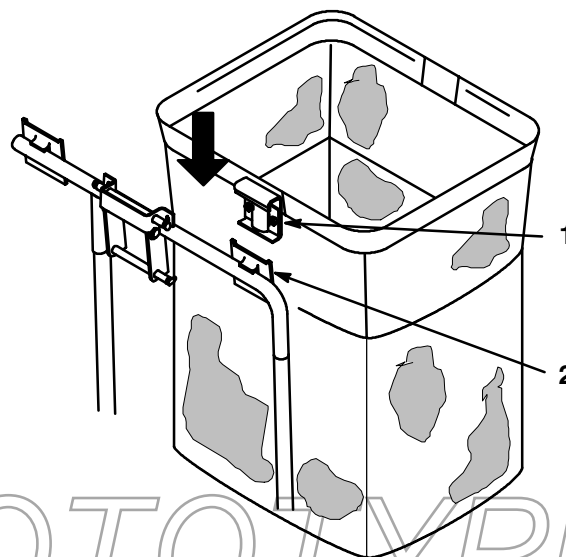


Figure 19

- | | |
|-------------------|----------------------|
| 1. Bag frame hook | 2. Retaining bracket |
|-------------------|----------------------|

1373

6. Lower the bagger top onto the bags. Then push down on both bag retainer handles until they lock on the bag frame (Fig. 20).

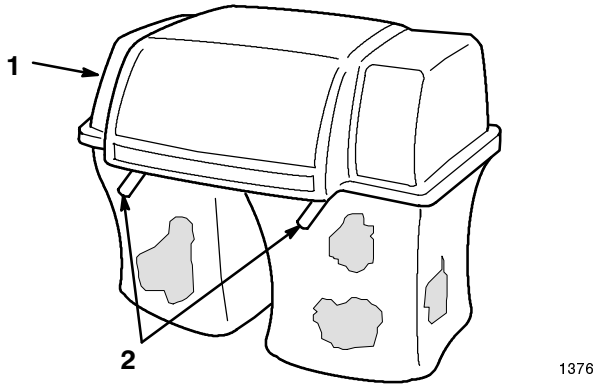


Figure 20

1. Bagger top
2. Bag retainer handles

7. Move the tractor seat to its normal position.

Mount the Discharge Tube

1. Insert the upper end of the discharge tube into the bagger top. Slide the lower end of the discharge tube over the blower discharge opening (Fig. 21).
2. Hook the rubber latch onto the knob (Fig. 21).

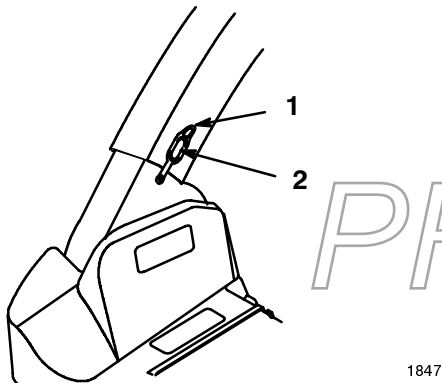


Figure 21

1. Rubber latch
2. Knob

Removing the Bagger

Remove the Discharge Tube

1. Unhook the rubber latch onto the knob (Fig. 22).
2. Slide the lower end of the discharge tube off the blower discharge opening (Fig. 22). Pull the upper end of the discharge tube out of the bagger top.

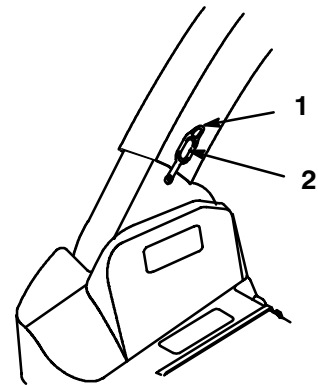


Figure 22

1. Rubber latch
2. Knob

Remove the Bagger

1. Tip the tractor seat forward.
2. Raise the bagger top and remove the grass bags from the bag frame (Fig. 23).

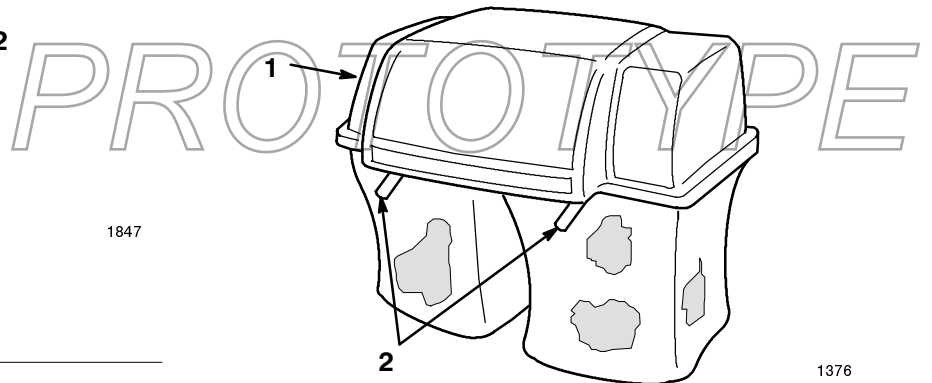


Figure 23

1. Bagger top
2. Bag retainer handles

- Carefully lift the bagger top and slide off the quick-attach bracket (Fig. 24). The bagger top is easier to remove if two people work together.

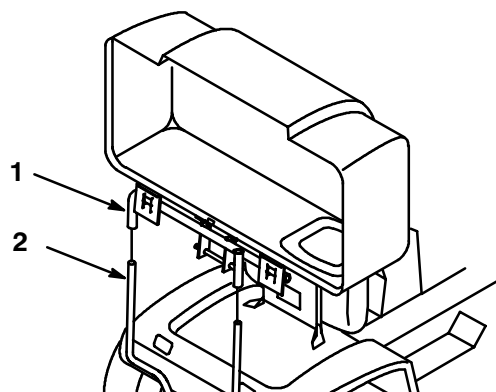


Figure 24

- Bagger top
- Quick-attach bracket

- Slide the bottom of the quick-attach bracket up out of the hole in the hitch and unhook from the spacers located inside the tractor frame (Fig. 25).

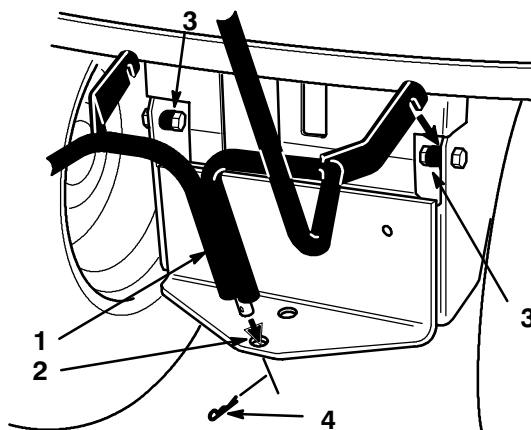



Figure 25

- Quick-attach bracket
- Hole in hitch
- Spacers
- Hair pin cotter


CAUTION

POTENTIAL HAZARD

- The hinge frame on the bagger top is spring-loaded.

WHAT CAN HAPPEN

- If you remove the bagger top when it is closed (in the down position), the top may suddenly fly open and you or someone else may be bruised, pinched, or injured in another way.

HOW TO AVOID THE HAZARD

- Always open (raise) the bagger top before you remove or install it on the quick-attach bracket.

- Remove the hair pin cotter from the hole at the bottom of the quick-attach bracket (Fig. 25).

- Move the tractor seat to its normal position.

Remove Blower Belt Cover

- Remove the blower belt cover by removing (2) knobs and (4) washers (Fig. 26).

Note: Save all parts and hardware for use when installing blower.

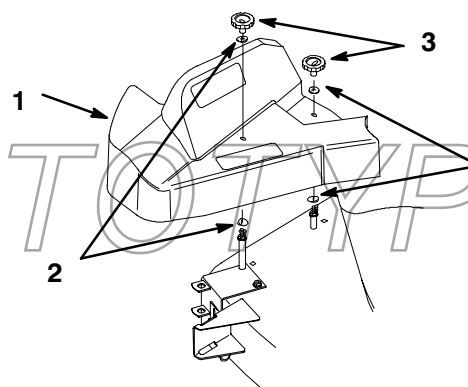


Figure 26

- Blower belt cover
- Washer
- Knob

2003

Remove the Blower from the Mower

1. Open latch and swing the blower out away from the mower, remove the blower belt from idler and blower pulleys (Fig. 27).

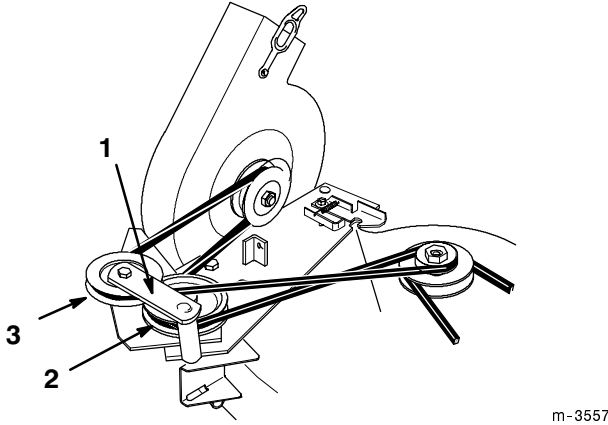


Figure 27

- | | |
|---|-----------------------------------|
| 1. Idler pulley bracket and pulley | 3. V-side of belt into top pulley |
| 2. Top side of belt against bottom pulley | |

2. Remove the blower by lifting the pivot pin out of the pivot support (Fig. 28).

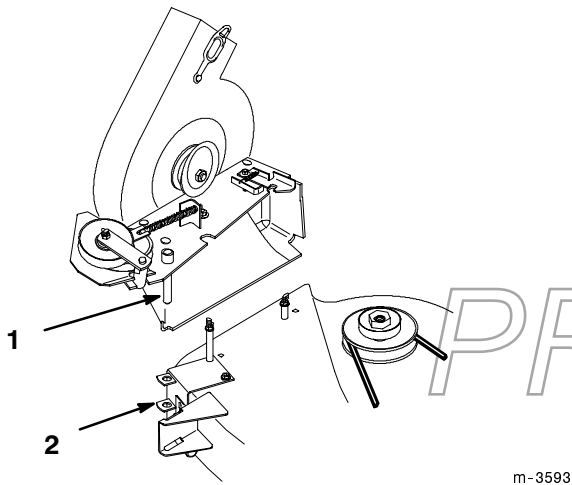


Figure 28

- | | |
|--------------|------------------|
| 1. Pivot pin | 2. Pivot support |
|--------------|------------------|

Remove the Blower Belt

1. Remove the mower belt cover from the right side pulley (Fig. 29). Save mounting hardware.
2. Unhook blower belt from blower pulley and slide the belt out of opening in belt cover (Fig. 29).

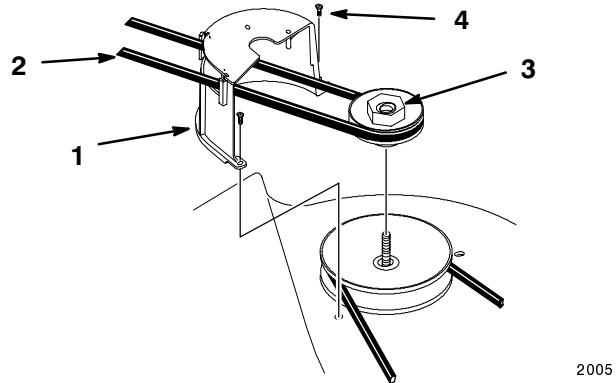


Figure 29

- | | |
|----------------|---------------------|
| 1. Belt cover | 3. Blower pulley |
| 2. Blower belt | 4. Screw (existing) |

3. Install the metal window onto the belt cover using existing hardware (Fig. 30).
4. Install the belt cover using existing hardware (Fig. 30).

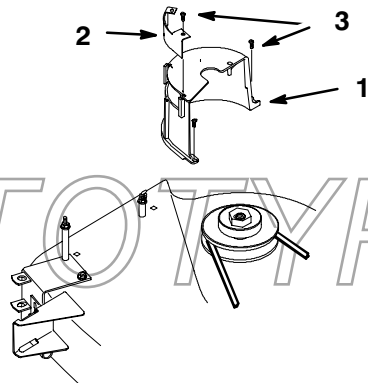


Figure 30

- | | |
|----------------|---------------------|
| 1. Belt cover | 3. Screw (existing) |
| 2. Metal Plate | |

Remove the Blower Pivot Support

1. Remove the pivot support and pivot bracket from the mower (Fig. 31).

Note: Save all parts and hardware for use when installing blower.

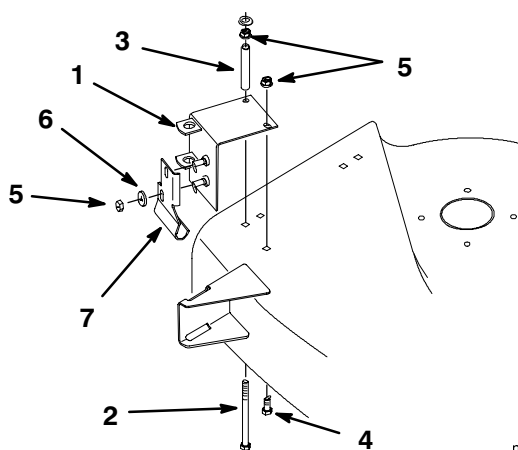


Figure 31

- | | |
|--------------------------------|-------------------|
| 1. Pivot support | 5. 5/16" lock nut |
| 2. 5/16 x 4-1/2" carriage bolt | 6. 5/16" washer |
| 3. Spacer Tube | 7. Pivot bracket |
| 4. 5/16 x 7/8" carriage bolt | |

Install Standard-lift Blades

1. Install standard-lift blades for side discharging in place of hi-lift blades. Refer to Mower Operator's Manual; Cutting Blade.

Note: The hi-lift blades are used with the recycling baffles (see page 16).

Remove the Grass Baffles

1. Remove the grass baffle inside front lip of mower (Fig. 32).

Note: Install hardware to fill holes in mower.

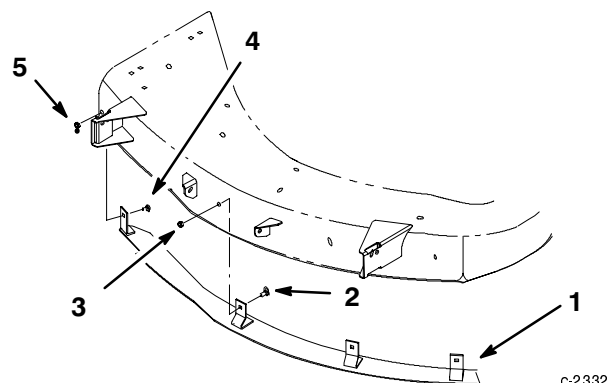


Figure 32

- | | |
|------------------------------|------------------------------|
| 1. Grass baffle | 4. Carriage bolt 5/16 x 1/2" |
| 2. Carriage bolt 5/16 x 7/8" | 5. Lock nut (thin) 5/16" |
| 3. Lock nut 5/16" | |

! DANGER

POTENTIAL HAZARD

- Open holes in the mower expose you and others to thrown debris.

WHAT CAN HAPPEN

- Debris thrown out of holes in the mower can cause injury.

HOW TO AVOID THE HAZARD

- Never operate the mower without hardware mounted in all holes in the mower.
- Install hardware in the mounting holes when the recycle baffle is removed.

2. Remove rear grass baffle and grass ring from inside discharge chute area (Fig. 33).

Note: Save all parts and hardware for use when installing blower.

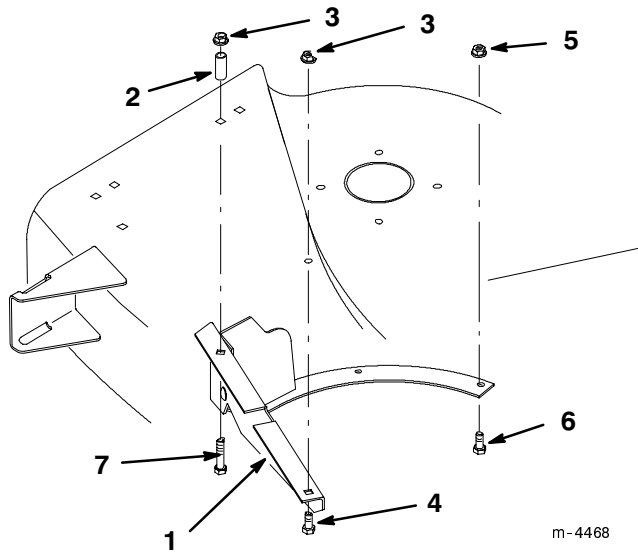


Figure 33

- | | |
|-------------------------------|--------------------------------|
| 1. Rear grass baffle and ring | 5. 1/4" lock nut |
| 2. Latch tube | 6. 1/4 x 3/4" screw |
| 3. 5/16" lock nut | 7. 5/16 x 2-1/2" carriage bolt |
| 4. 5/16 x 7/8" carriage bolt | |

7. Rotate the blades to assure there is at least 1/8" clearance between the blades and the baffle.

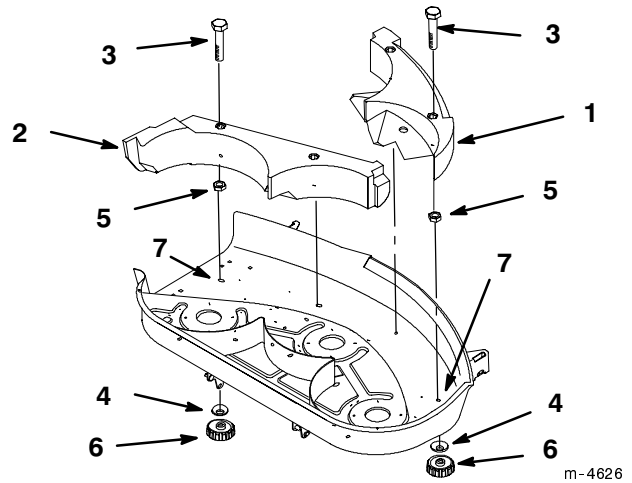


Figure 34

- | | |
|---|-------------------|
| 1. Baffle left side | 5. 5/16" lock nut |
| 2. Baffle right side | 6. Knob |
| 3. 5/16 x 1-1/4" bolt | 7. Slotted hole |
| 4. Belleville washer—concave side toward deck surface | |

Install the Recycling Baffles

If you have a recycling mower deck, you must install the recycling baffles to use the mower as a Recycler.

1. Thoroughly clean the mower. All debris must be removed to ensure the baffle will fit properly against the cutting chamber.
2. Remove the (2) carriage bolts, washers, and locknuts from the slotted holes of the mower (Fig. 34).
3. Thread a 5/16 x 1-1/4" bolt through each baffle as shown in Figure 34, and thread a 5/16" nut on the end of each bolt.
4. Now secure the left-hand baffles to the mower with two Belleville washers and two knobs (Fig. 1).
5. Secure the right-hand baffle to the mower with two Belleville washers and two knobs.
6. Tighten all mounting hardware securely.

Install the Discharge Chute

1. Install mounting brackets onto the mower with 5/16 x 3/4" carriage bolts and 5/16" lock nuts (Fig. 35).
2. Place springs into brackets on mower with hooked ends over raised back (Fig. 35).
3. Align the discharge chute with holes in brackets and spring straight ends in space under hinge and above chute (Fig. 35).
4. Secure the chute to the bracket with bolts through discharge chute, springs, and brackets. Secure with lock nuts (Fig. 35).
5. Lift the discharge chute and check that it is spring loaded and pivots freely to the full down position.

IMPORTANT: Discharge chute must be spring loaded in the down position. Lift deflector up to test that it snaps to the full down position.

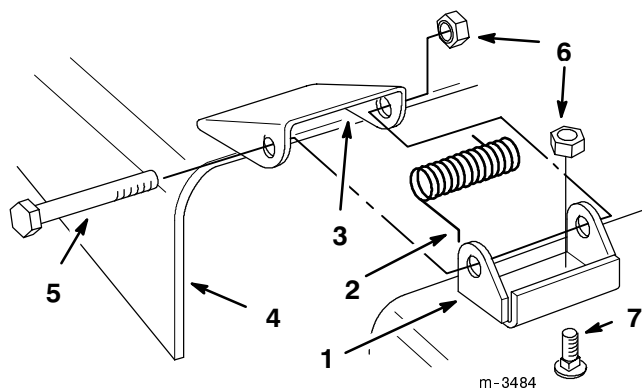


Figure 35

- | | |
|---------------------|------------------|
| 1. Bracket | 5. Bolt |
| 2. Spring hook end | 6. Lock nut |
| 3. Space for spring | 7. Carriage bolt |
| 4. Discharge chute | |

! DANGER

POTENTIAL HAZARD

- Without the discharge chute, mulch baffle, or complete grass catcher assembly mounted in place, you and others are exposed to blade contact and thrown debris.

WHAT CAN HAPPEN

- Contact with rotating mower blade(s) and thrown debris will cause injury or death.

HOW TO AVOID THE HAZARD

- NEVER remove the discharge chute from the mower because the discharge chute routes material down toward the turf. If the discharge chute is ever damaged, replace it immediately.
- Never put your hands or feet under the mower.
- Never try to clear discharge area or mower blades unless you move the power take off (PTO) to "OFF" and rotate the ignition key to "OFF." Also remove the ignition key and pull the wire(s) off the spark plug(s).

Mount Mower onto Tractor

1. Install mower onto tractor. Refer to Mower Operator's Manual for instructions.
2. Replace the two left side mower leveling brackets (holes) with two slotted leveling brackets (Fig. 36). Secure with existing washers and hair pin cotters (Fig. 36).

Note: Save (hole) leveling brackets for use when blower is installed.

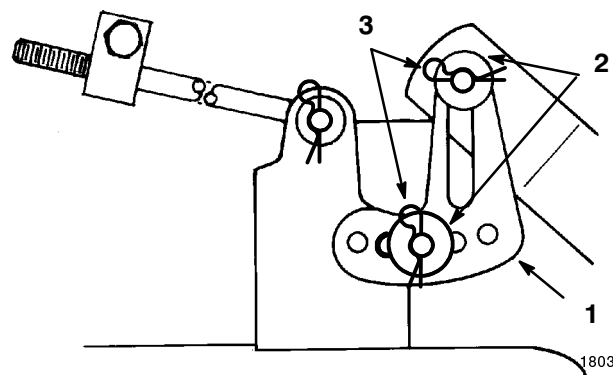


Figure 36

- | | |
|-------------------------|--------------------|
| 1. Leveling bracket (2) | 3. Hair pin cotter |
| 2. Washer | |

3. Check mower level front-to-rear and side-to-side; refer to Mower Operator's Manual for instructions.

PROTOTYPE

Operation

CAUTION

To Avoid Personal Injury:

- **Become familiar with all operating and safety instructions in the operator's manual for your tractor and mower before using this attachment.**
- **Never remove the discharge tube, bags, bagger top, or the blower while the engine is running.**
- **Always shut the engine off before clearing an obstruction from the vac bagging system.**
- **Never do maintenance or repairs while the engine is running.**

Using the Full Bag Tester

As grass is cut and blown into the bags, the left bag fills first, then the right bag. If you overfill the bags, grass will eventually plug the discharge tube or elbow.

1. Stop the tractor and apply the brake.
2. To check if both bags are full, periodically raise the full bag tester handle (Fig. 37). If you feel resistance as you raise the handle, the bags must be emptied because they are full (Fig. 37).

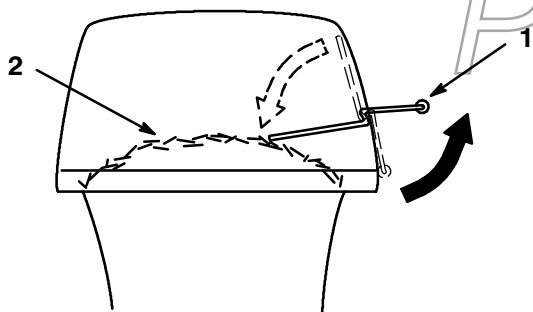


Figure 37

1 Full bag tester handle

2 Bag full

Emptying the Grass Bags

Be careful when lifting or handling a grass bag that is full. To empty the grass bags:

1. Stop the tractor, set the parking brake, and disengage the power take off (PTO) by pushing the PTO control to OFF (this stops the mower blades). Shut the engine off before you get off the tractor. Remove the ignition key.
2. Tip the tractor seat forward.
3. Pull up on both bag retainer handles until they unlock from the bag frame (Fig. 20). Now open (raise) the bagger top.
4. Compress debris into the bags. With both hands, lift up on the bag and unhook it from the retaining bracket (Fig. 19). Empty the bag. Repeat for the other bag.
5. Install the bags by sliding the bag frame hooks onto the retaining brackets (Fig. 19).
6. Lower the bagger top onto the bags. Then push down on both bag retainer handles until they lock on the bag frame (Fig. 20).
7. Move the tractor seat to its normal position.

PROTOTYPE

1381

Clearing Obstructions From Bagger

1. Stop the tractor, shift into neutral, set the parking brake, push the PTO control to OFF (this stops the mower blades), stop the engine, and remove the ignition key.
2. Check the grass bags and empty them if they are full.
3. Remove and separate the discharge tube and blower from the bagger top and mower. Using a stick or similar object, carefully remove and clear the obstruction from the mower, discharge tube, blower, and the bagger top.
4. After you remove the obstruction, install the complete bagger system and resume operation.

Operating and Bagging Tips

Size

Remember that the tractor is longer and wider with this attachment installed. By turning too sharply in confined places you may damage the attachment.

Trimming

Always trim with the left side of the mower. Do not trim with the right side of the mower because you could damage the bagger's blower and discharge tube.

Cutting Height

Do not set the mower cutting height too low because long grass surrounding the mower can prevent air from getting under the mower and entering the bagging system. If enough air doesn't get under the mower, the bagging system will plug.

Cutting Frequency

Cut the grass often, especially when it grows rapidly. You will have to cut your grass twice if it gets excessively long (refer to Bagging Long Grass, page 20).

Cutting Technique

For best lawn appearance, be sure to slightly overlap the mower into the previously cut area. This helps reduce the load on the engine and reduces the chance of plugging the blower and discharge tube.

Using Bags

Although not required, bags may be inserted into each cloth grass bag as a liner to collect clippings and make disposal more convenient (Fig. 38). If you use a bag liner, remove the filled grass bag and close the top of the liner. Then pull the liner out the grass bag or turn the bag upside down while holding the handle on the bottom of the grass bag (allows liner to slide out).

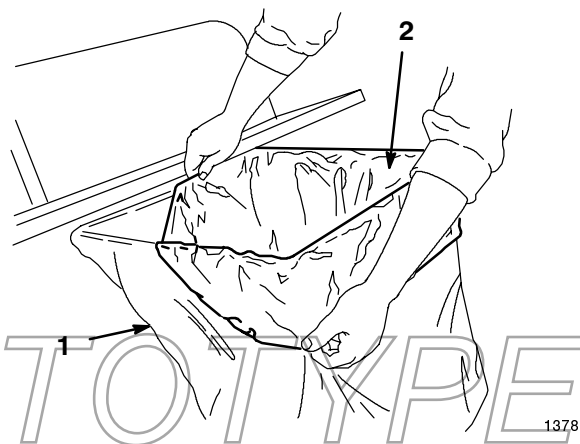


Figure 38

- 1 Cloth grass bag 2 Bag (liner)

Bagging Speed

Most often you will bag with the tractor throttle in the FAST position and drive at a normal ground speed. However, in extremely dry and dusty grass, you may want to slightly reduce throttle speed and increase ground speed of the tractor. The bagging system may plug if you drive too fast and the engine speed gets too slow. On hills it may be necessary to slow the tractor's ground speed. This helps maintain engine speed and bagging efficiency. Mow down hill whenever possible.

CAUTION

POTENTIAL HAZARD

- As the grass bags fill, extra weight is added to the back of the tractor.

WHAT CAN HAPPEN

- If you stop and start suddenly on hills, you may lose steering control or the tractor may tip.

HOW TO AVOID THE HAZARD

- Do not start or stop suddenly when going uphill or downhill. Avoid uphill starts.
- If you do stop the tractor when going uphill, disengage the PTO (stop the mower blades) by pushing the PTO control to OFF. Then back down the hill using slow reverse speed.
- Do not change speeds or stop on slopes.

Bagging Long Grass

Excessively long grass is heavy and may not be propelled completely into the grass bags. If this happens, the discharge tube and blower may plug. To avoid plugging the bagging system, mow the grass at a high height of cut, then lower the mower to your normal cutting height and repeat the bagging process.

Bagging Wet Grass

Always try to cut grass when it is dry because your lawn will have a neat appearance. If you must cut wet grass, use the conventional side discharge feature of the mower. Several hours later, when the clippings are dry, install the complete bagger attachment and vacuum up the grass clippings.

Signs of Plugging

As you are bagging, a small amount of grass clippings normally blow out the front of the mower. An excessive amount of clipping blow-out indicates that the bags are full or the system is plugged.

PROTOTYPE

Maintenance

Inspecting the Bagger Attachment

Inspect the bagger attachment after the first ten hours of operation, and monthly thereafter.

1. Check the blower, discharge tube and the bagger top. Replace these parts if they are cracked or broken.
2. Tighten all nuts bolts and screws.
3. Inspect the grass bags for deterioration.

DANGER

POTENTIAL HAZARD

- The grass bag material may tear, wear, and eventually deteriorate.

WHAT CAN HAPPEN

- You or bystanders could be severely injured by flying debris or thrown objects that may pass through worn or deteriorated grass bags.

HOW TO AVOID THE HAZARD

- Frequently check the grass bags for holes, rips, wear, and other deterioration. Do not wash the grass bags. If the bag has deteriorated, install new grass bags supplied by the manufacturer of this bagger attachment.

Inspecting the Mower Blades

1. Inspect the mower blades regularly and whenever a blade strikes a foreign object.
2. If blades are badly worn or damaged, install new blades. Refer to your tractor or mower operator's manual for complete blade maintenance.

Caring for the Grass Bags

1. Washing the grass bags is not recommended.
2. To prevent rapid deterioration of bag material, store the bags so they dry completely after each use.

CAUTION

POTENTIAL HAZARD

- If you store grass clippings in the bagger attachment cloth grass bags, under the right conditions, spontaneous combustion (a fire-generating process that occurs without an external source of ignition) could occur.

WHAT CAN HAPPEN

- If a fire occurs, property could be damaged and/or someone could be injured.

HOW TO AVOID THE HAZARD

- The cloth grass bags are not storage containers. Never store grass clippings and debris in the grass bags.

Cleaning the Bagger Attachment

1. After each use, remove and wash the inside and outside of the bagger top, discharge tube, blower, and the underside of the mower, using water sprayed from a garden hose. Use a mild automotive detergent to remove stubborn dirt.
2. Make sure you remove matted grass from all parts.
3. After washing let all parts dry thoroughly. Do not wash the grass bags.

Storing the Bagger Attachment

1. Clean the bagger attachment (refer to Cleaning the Bagger Attachment, page 21).
2. Inspect the bagger attachment for damage (refer to Inspecting the Bagger Attachment, page 21).
3. Make sure the grass bags are empty and thoroughly dry.
4. Store the bagger in a clean, dry place, out of direct sunlight. This protects the plastic parts and extends the life of the bagger. If you must store the bagger outside, cover it with a weatherproof cover.

PROTOTYPE