



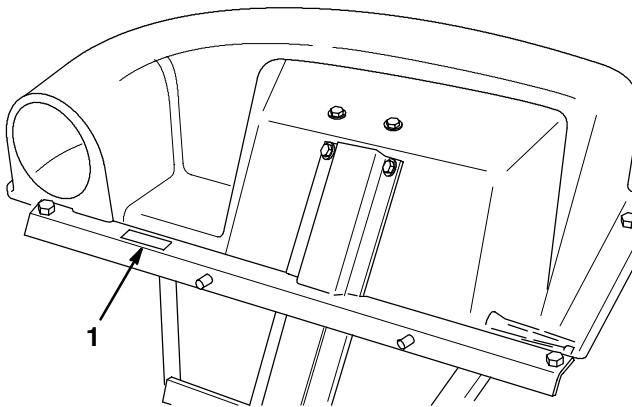
38" Twin Bagger
Wheel Horse® Lawn Tractor Attachment
Model No. 79103—8900001 and Up

Operator's Manual

Introduction

We want you to be completely satisfied with your new product, so feel free to contact your local Authorized Service Dealer for help with service, genuine replacement parts, or other information you may require.

Whenever you contact your Authorized Service Dealer or the factory, always know the model and serial numbers of your product. These numbers will help the Service Dealer or Service Representative provide exact information about your specific product. You will find the model and serial number plate located in a unique place on the product as shown below.



1. Model and Serial Number Plate

For your convenience, write the product model and serial numbers in the space below.

| |
|-------------------------|
| Model No: _____ |
| Serial No. _____ |

The warning system in this manual identifies potential hazards and has special safety messages that help you and others avoid personal injury, even death. DANGER, WARNING and CAUTION are signal words used to identify the level of hazard. However, regardless of the hazard, be extremely careful.

DANGER signals an extreme hazard that will cause serious injury or death if the recommended precautions are not followed.

WARNING signals a hazard that may cause serious injury or death if the recommended precautions are not followed.

CAUTION signals a hazard that may cause minor or moderate injury if the recommended precautions are not followed.

Two other words are also used to highlight information. “Important” calls attention to special mechanical information and “Note” emphasizes general information worthy of special attention.

The left and right side of the machine is determined by sitting on the seat in the normal operator’s position.

Contents

| | Page | | Page |
|--------------------------------------|------|------------------------------------|------|
| Safety and Instruction Decals | 2 | Maintenance | 10 |
| Installation | 3 | Inspecting the Grass Catcher | 10 |
| Loose Parts | 3 | Inspecting the Mower Blades | 10 |
| Installing the Grass Catcher | 3 | Caring for the Grass Bags | 10 |
| Removing the Grass Catcher | 6 | Cleaning the Grass Catcher | 10 |
| Operation | 7 | Storing the Grass Catcher | 11 |
| Emptying the Grass Bags | 7 | | |
| Clearing Obstructions from the Grass | | | |
| Catcher | 7 | | |
| Operating and Bagging Tips | 7 | | |

Safety and Instruction Decals



Safety decals and instructions are easily visible to the operator and are located near any area of potential danger. Replace any decal that is damaged or lost.



ON DISCHARGE ELBOW
(Part No. 93-1122)

Installation

Loose Parts

| DESCRIPTION | QTY. | USE |
|-------------------------|------|---|
| Upper Mounting Bracket | 1 | Install upper mounting bracket |
| Bolt (5/16 x 1") | 2 | |
| Locknut (5/16") | 2 | |
| Lower Extension Bracket | 1 | Install lower extension bracket and hitch pin |
| Bolt (5/16 x 1") | 2 | |
| Locknut (5/16") | 2 | |
| Hitch Pin | 1 | |
| Bolt (5/16 x 3/4") | 1 | |
| Mounting Frame | 1 | Assemble and install grass catcher |
| Backup Plate | 1 | |
| Grass Catcher Cover | 1 | |
| Bolt (5/16 x 1") | 4 | |
| Locknut (5/16") | 4 | |
| Washer (5/16") | 4 | |
| Bolt (3/8 x 1") | 2 | |
| Washer (3/8") | 2 | |
| Locknut (3/8") | 2 | |
| Hairpin Cotter | 2 | |
| Chute | 1 | Install chute and discharge tube |
| Discharge Tube | 1 | |
| Locking Pin | 1 | |
| Grass Bag | 2 | Install grass bags |

Installing the Grass Catcher

Installing the Upper Mounting Bracket

1. Install the upper mounting bracket to the rear of the tractor using two 5/16 x 1" bolts and 5/16" locknuts (Fig. 1). Use the left most set of holes in the bracket when looking at the rear of the tractor.

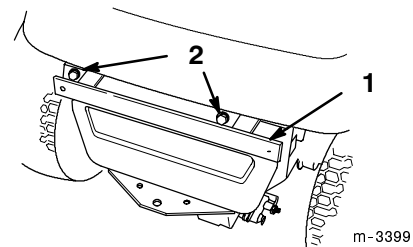


Figure 1

1. Upper mounting bracket
2. Bolts (5/16 x 1")

Installing the Lower Extension Bracket

1. Slide the lower extension bracket onto the mounting pin of the mounting frame (Fig. 2).
2. Secure the lower extension bracket to the mounting frame using two 5/16 x 1" bolts and 5/16" locknuts (Fig. 2).
3. Secure the hitch pin in the hole in the lower extension bracket using a 5/16 x 3/4" bolt (Fig. 2).

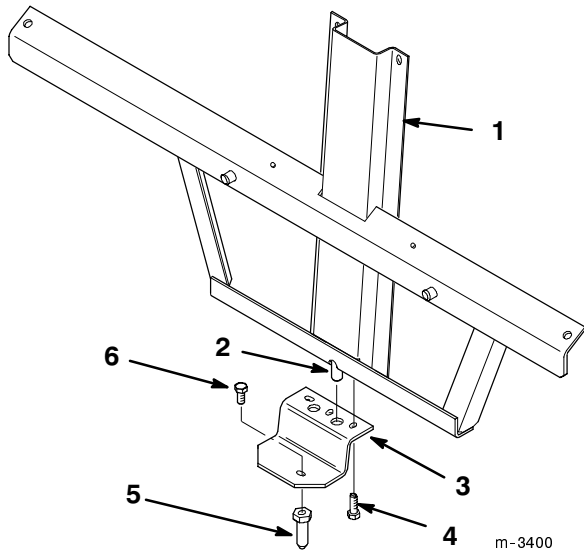


Figure 2

- | | |
|----------------------------|-----------------------|
| 1. Mounting frame | 4. Bolt (5/16 x 1") |
| 2. Mounting pin | 5. Hitch pin |
| 3. Lower extension bracket | 6. Bolt (5/16 x 3/4") |

Installing the Mounting Frame

1. Secure the top of the mounting frame to the grass catcher cover using the backup plate, four 5/16 x 1" bolts, four 5/16" washers, and four 5/16" locknuts (Fig. 3).

Note: The washers should be installed against the cover on the outside and the backup plate against the cover on the inside.

2. Secure the mounting frame with the two 3/8 x 1" bolts, 3/8" washers, and 3/8" locknuts (Fig. 3)

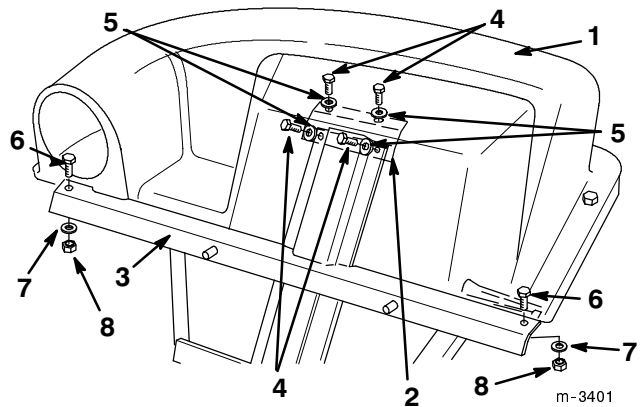


Figure 3

- | | |
|------------------------------------|---------------------|
| 1. Grass catcher cover | 5. Washer (5/16") |
| 2. Backup plate (inside the cover) | 6. Bolts (3/8 x 1") |
| 3. Mounting frame | 7. Washer (3/8") |
| 4. Bolt (5/16 x 1") | 8. Locknut (3/8") |

3. Tighten all fasteners securing the mounting frame.

Attaching the Grass Catcher to the Tractor

1. Insert the hitch pin on the grass catcher into the mounting hole in the tractor hitch.
2. Rotate the grass catcher up so that the pins on the mounting frame slide through the holes in the upper mounting bracket on the tractor. Secure the pins with the hairpin cotters (Fig. 4).

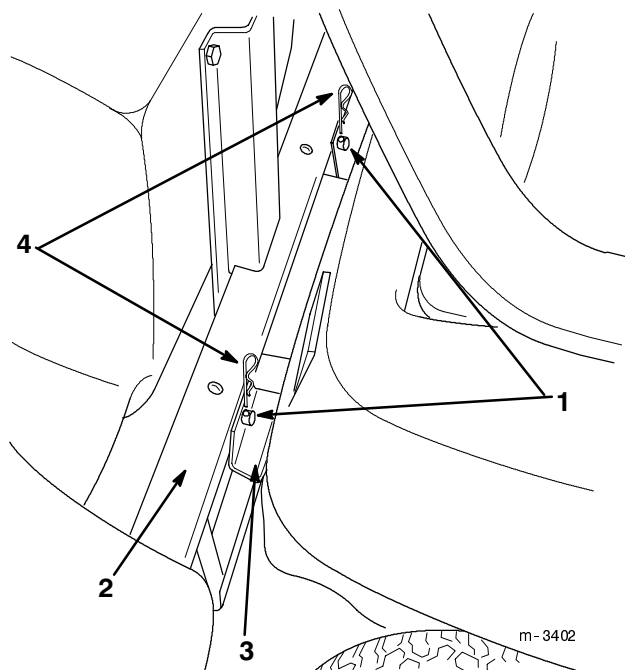


Figure 4

- | | |
|-------------------|---------------------------|
| 1. Mounting pin | 3. Upper mounting bracket |
| 2. Mounting frame | 4. Hairpin cotter |

Assembling and Installing the Chute and Discharge Tube

1. Lift the mower deflector and remove the mulch plug, if present. Slide the chute into position with the rear hook around the deflector rod and the front latch aligned. Insert the locking pin (Fig. 5).
2. Hook the flexible latch on the chute into the notched bracket on the back of the mower (Fig. 5)

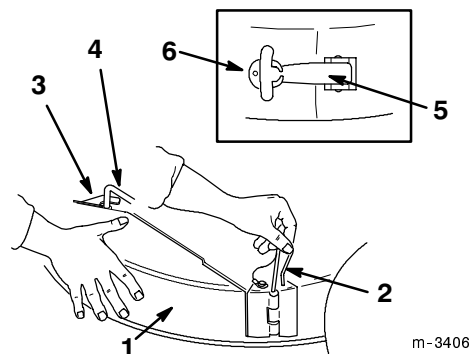


Figure 5

- | | |
|----------------|--------------------|
| 1. Chute | 4. Deflector rod |
| 2. Locking pin | 5. Flexible latch |
| 3. Rear hook | 6. Notched bracket |

3. Slide the discharge tube into the opening in the grass catcher (Fig. 6).
4. Slide the discharge tube over the end of the chute, ensuring that the tab on the chute snaps into the square hole in the discharge tube (Fig. 6).

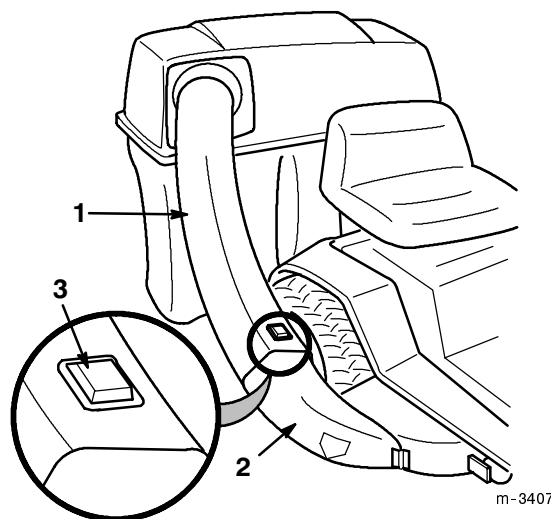


Figure 6

- | | |
|-------------------|--------|
| 1. Discharge tube | 3. Tab |
| 2. Chute | |

Installing the Grass Bags

1. Slide the grass bag under the grass catcher cover and position the front edge of the bag rod into the screen support bracket on the bag frame (Fig. 7).

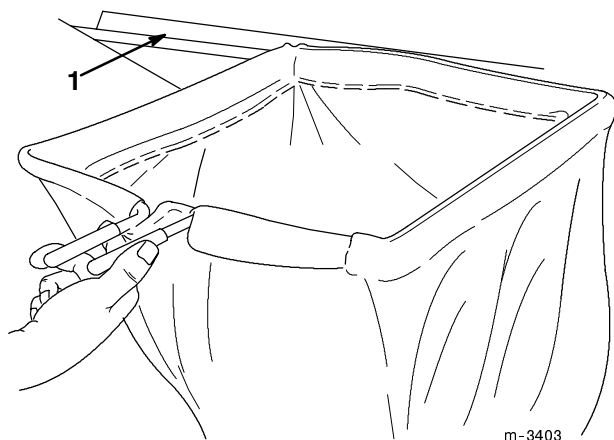


Figure 7

1. Screen support bracket

2. Lift the rear of the bag up to the grass catcher cover. Squeeze the bag handles and allow them to snap into the bag frame brackets (Fig. 8).

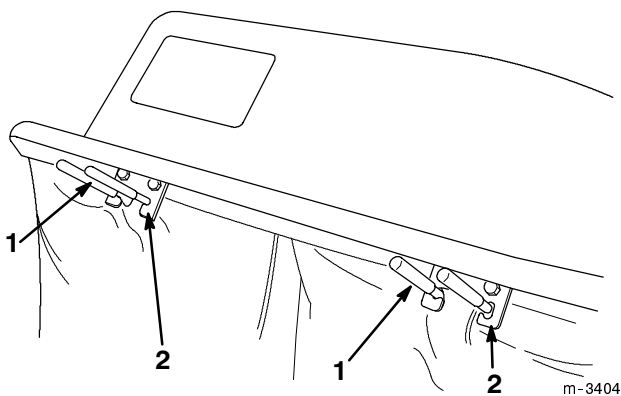


Figure 8

1. Bag handle
2. Bag frame bracket

3. Repeat steps 1 and 2 for the other bag.

Removing the Grass Catcher

DANGER

POTENTIAL HAZARD

- Sometimes people are tempted to operate the tractor and mower without both grass bags installed on the grass catcher³ or with the discharge tube removed. This exposes you and others to thrown debris and blade contact.

WHAT CAN HAPPEN

- You and others may die or be injured severely if you are hit by thrown debris or cut by the blade.

HOW TO AVOID THE HAZARD

- Always operate the mower with the complete grass catcher mounted in place or use the mower to side discharge, making sure that the spring-loaded grass deflector is in the down position.

1. Push on the tab on the chute and pull the discharge tube free from the chute and grass catcher (Fig. 6)
2. Release the flexible latch and remove the locking pin securing the chute to the mower. Pull the chute out of the mower (Fig. 5).
3. Remove the hairpin cotters securing the grass catcher to the upper mounting bracket on the mower (Fig. 4). Rock the grass catcher backward, then pull it free of the mower hitch.
4. Store all grass catcher parts in a convenient place.

Operation



CAUTION

To Avoid Personal Injury:

- **Become familiar with all operating and safety instructions in the operator's manual for your tractor and mower before using this attachment.**
- **Never remove the grass catcher discharge tube, bags, grass catcher cover, or chute while the engine is running.**
- **Always shut the engine off before clearing an obstruction from the grass catcher.**
- **Never do maintenance or repairs while the engine is running.**

Emptying the Grass Bags

Be careful when lifting or handling a grass bag that is full. To empty the grass bags:

1. Stop the tractor, set the parking brake, and disengage the power take off (PTO) by pushing the PTO control to OFF (this stops the mower blades). Shut the engine off before you get off the tractor.
2. Squeeze the bag handles and swing it down from the bag frame bracket.
3. Compress debris into the bags. With both hands, pull the bag out from under the grass catcher cover. Empty the bag.
4. Repeat steps 2 and 3 for the other bag.
5. Slide the grass bag under the grass catcher cover and position the front edge of the bag rod into the screen support bracket on the bag frame (Fig. 7).
6. Lift the rear of the bag up to the grass catcher cover. Squeeze the bag handles and allow them to snap into the bag frame brackets (Fig. 8).

7. Repeat steps 5 and 6 for the other bag.

Clearing Obstructions from the Grass Catcher

1. Stop the tractor, set the parking brake, and disengage the power take off (PTO) by pushing the PTO control to OFF (this stops the mower blades). Shut the engine off before you get off the tractor.
2. Check the grass bags and empty them if they are full.
3. Remove and separate the discharge tube and chute from the grass catcher cover and mower. Using a stick or similar object, carefully remove and clear the obstruction from the mower, discharge tube, chute, and the grass catcher cover.
4. After you remove the obstruction, install the grass catcher and resume operation.

Operating and Bagging Tips

Size

Remember that the tractor is longer and wider with this attachment installed. By turning too sharply in confined places you may damage the attachment.

Trimming

Always trim with the left side of the mower. Do not trim with the right side of the mower because you could damage the grass catcher's chute and discharge tube.

Cutting Height

Do not set the mower cutting height too low because long grass surrounding the mower can prevent air from getting under the mower and entering the grass catcher. If enough air doesn't get under the mower, the grass catcher will plug.

Cutting Frequency

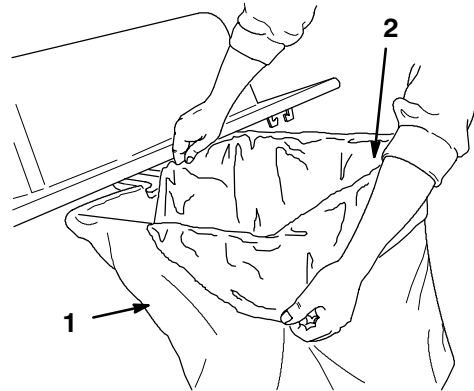
Cut the grass often, especially when it grows rapidly. You will have to cut your grass twice if it gets excessively long (refer to Bagging Long Grass, page 9).

Cutting Technique

For best lawn appearance, be sure to slightly overlap the mower into the previously cut area. This helps reduce the load on the engine and reduces the chance of plugging the grass catcher.

Using Bags

Although not required, bags may be inserted into each cloth grass bag as a liner to collect clippings and make disposal more convenient (Fig. 9). If you use a bag liner, remove the filled grass bag and close the top of the liner. Then pull the liner out the grass bag or turn the bag upside down while holding the handle on the bottom of the grass bag (allows liner to slide out).



m-3405

Figure 9

1. Cloth grass bag

2. Bag (liner)

Bagging Speed

Most often you will bag with the tractor throttle in the FAST position and drive in first gear, which is the slowest ground speed. However, in extremely dry and dusty grass, you may want to lower throttle speed and shift gear selector to a higher gear to maintain ground speed. The grass catcher may plug if you drive too fast, causing the engine to slow down with the extra work load.

CAUTION

POTENTIAL HAZARD

- As the grass bags fill, extra weight is added to the back of the tractor.

WHAT CAN HAPPEN

- If you stop and start suddenly on hills, you may lose steering control or the mower may tip.

HOW TO AVOID THE HAZARD

- Do not start or stop suddenly when going uphill or downhill. Avoid uphill starts.
- If you do stop the mower when going uphill, push the PTO control to OFF (stop the mower blades). Then back down the hill using slow reverse speed.
- Do not change speeds or stop on slopes.

Bagging Long Grass

Excessively long grass is heavy and may not be propelled completely into the grass bags. If this happens, the discharge tube may plug. To avoid plugging the grass catcher, mow the grass at a high height-of-cut, then lower the mower to your normal cutting height and repeat the bagging process.

Bagging Wet Grass

Always try to cut grass when it is dry because your lawn will have a neat appearance. If you must cut wet grass, use the conventional side discharge feature of the mower. Several hours later, when the clippings are dry, install the grass catcher and vacuum up the grass clippings.

Signs of Plugging

As you are bagging, a small amount of grass clippings normally blow out the front of the mower. An excessive amount of clipping blow-out indicates that the bags are full or the system is plugged.

Maintenance

Inspecting the Grass Catcher

Inspect the grass catcher after the first ten hours of operation and monthly thereafter.

1. Check the discharge tube, chute, and the grass catcher cover. Replace these parts if they are cracked or broken.
2. Tighten all nuts bolts and screws.
3. Inspect the grass bags for deterioration.

DANGER

POTENTIAL HAZARD

- The grass bag material may tear, wear, and eventually deteriorate.

WHAT CAN HAPPEN

- You or bystanders could be severely injured by flying debris or thrown objects that may pass through worn or deteriorated grass bags.

HOW TO AVOID THE HAZARD

- Frequently check the grass bags for holes, rips, wear, and other deterioration. Do not wash the grass bags. If the bag has deteriorated, install new grass bags supplied by the manufacturer of this grass catcher attachment.

Inspecting the Mower Blades

1. Inspect the mower blades regularly and whenever a blade strikes a foreign object.
2. If blades are badly worn or damaged, install new blades. Refer to your tractor or mower operator's manual for complete blade maintenance.

Caring for the Grass Bags

1. Do not wash the grass bags.
2. To prevent rapid deterioration of bag material, store the bags so they dry completely after each use.

CAUTION

POTENTIAL HAZARD

- If you store grass clippings in the grass bags, under the right conditions, spontaneous combustion (a fire-generating process that occurs without an external source of ignition) could occur.

WHAT CAN HAPPEN

- If a fire occurs, property could be damaged and/or someone could be injured.

HOW TO AVOID THE HAZARD

- The cloth grass bags are not storage containers. Never store grass clippings and debris in the grass bags.

Cleaning the Grass Catcher

1. After each use, remove and wash the inside and outside of the grass catcher cover, discharge tube, chute, and the underside of the mower, using water sprayed from a garden hose. Use a mild automotive detergent to remove stubborn dirt.

IMPORTANT: Do not wash the grass bags. Washing can cause the bags to deteriorate faster.

2. Make sure you remove matted grass from all parts.
3. After washing let all parts dry thoroughly.

Storing the Grass Catcher

1. Clean the grass catcher (refer to Cleaning the Grass Catcher, page 10).
2. Inspect the grass catcher for damage (refer to Inspecting the Grass Catcher, page 10).
3. Make sure the grass bags are empty and thoroughly dry.
4. Store the grass catcher in a clean, dry place, out of direct sunlight. This protects the plastic parts and extends the life of the grass catcher. If you must store the grass catcher outside, cover it with a weatherproof cover.

