



Z147

Z-Master[®] with 44" Side Discharge Mower Model No. 74176—210000001 and Up

Parts Catalog

Ordering Replacement Parts

To order replacement parts, please supply: the part number, the quantity, and the description of each part desired.

Understanding Reference Numbers

Each identified part in an illustration has a reference number. The reference number for a part also appears in the parts list, along with other information about the part.

This catalog uses two special reference number formats, one to indicate parts in a service assembly and another to indicate the quantity of a given part in an illustration.

Service Assembly Reference Numbers

Parts in service assemblies have reference numbers in the form **a:b**. The **a** represents the reference number of the entire service assembly and the **b** represents a sequential number unique to each part within the service assembly.

For example, a wheel assembly might be identified by reference number **6**, the tire by **6:1**, the valve by **6:2**, and the wheel by **6:3**. When you order the assembly identified by reference number **6**, you receive all parts identified by reference numbers **6:1**, **6:2**, and **6:3**. However, you may also order any part individually.

Reference numbers of this type appear in illustrations and in part lists.

Reference Numbers Indicating Quantity

In an illustration, if a reference number indicates more than one part, the reference number has the form **nX y**. The **n** represents the quantity of the part, the **X** is the multiplication symbol, and the **y** represents the reference number.

For example, in an illustration, the reference number **2X 37** means that two of the parts identified by reference number **37** are indicated.

Contents

Description	Page	Description	Page
Front Frame Assembly	4	Lubrication-Equipment Assembly	
Height of Cut Handle and Plates	6	Kawasaki FH500V-AS10	23
Main Frame	7	Cooling-Equipment Assembly	
Fuel System Assembly	8	Kawasaki FH500V-AS10	24
Parking Brake System Assembly	9	Cooling-Equipment Assembly	
Motion Control System Assembly	10	Kawasaki FH500V-AS10	25
Hydraulic System Assembly	11	Electric-Equipment Assembly	
Pump, Idler and Belt Assembly	12	Kawasaki FH500V-AS10	26
Engine and Clutch Assembly	13	Electric-Equipment Assembly	
44" Deck Assembly	14	Kawasaki FH500V-AS10	27
44" Deck Spindle Assembly	15	Control-Equipment Assembly	
Idler, Pulleys/Lift Strut, Chains Assembly	16	Kawasaki FH500V-AS10	28
Electrical System Assembly	17	Control-Equipment Assembly	
Cylinder/Crankcase Assembly		Kawasaki FH500V-AS10	29
Kawasaki FH500V-AS10	18	Carburetor Assembly	
Cylinder/Crankcase Assembly		Kawasaki FH500V-AS10	30
Kawasaki FH500V-AS10	19	Carburetor Assembly	
Valve/Camshaft Assembly		Kawasaki FH500V-AS10	31
Kawasaki FH500V-AS10	20	Air-Filter/Muffler Assembly	
Valve/Camshaft Assembly		Kawasaki FH500V-AS10	32
Kawasaki FH500V-AS10	21	Fuel-Tank/Fuel-Valve Assembly	
Piston/Crankshaft Assembly		Kawasaki FH500V-AS10	33
Kawasaki FH500V-AS10	22	Starter/Decals	
		Kawasaki FH500V-AS10	34

Accessories

Description	Model / Part No.	Description	Model / Part No.
Recycler Kit	59220	Striping Kit	30121
Bahaia Mulching Kit	59226	High Suspension Seat	74210
High Sails Blade		Heat Shield Kit	99-8921
(3 required for improved bagging)	55-4940	Oil Drain Valve	99-8923
Bagging System	79460	Hitch Kit	99-8924
Grass Gobbler	30131		

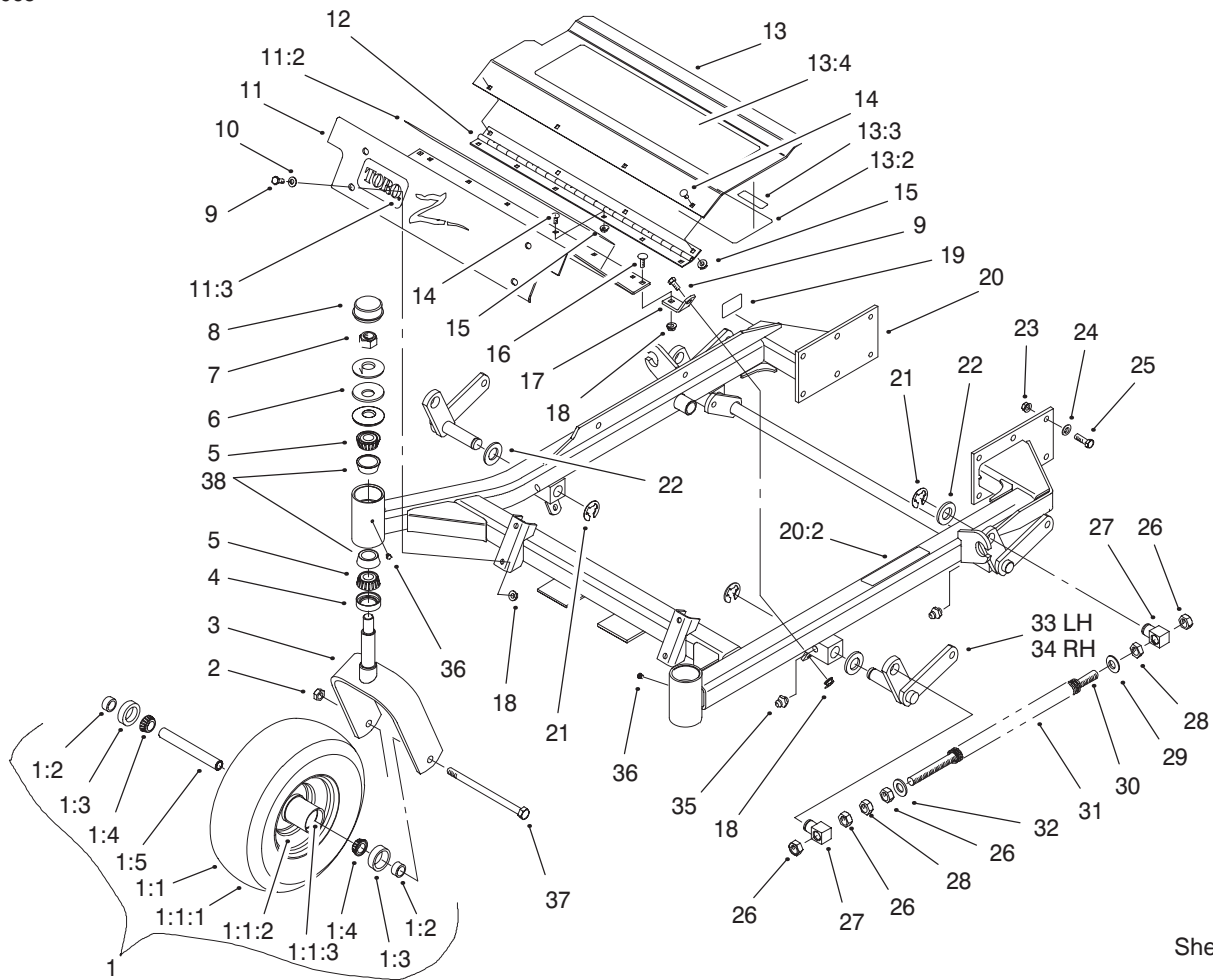
PROTOTYPE

Part Description Abbreviations

Part descriptions in this catalog may include the following abbreviations.

Abbreviation	Meaning	Abbreviation	Meaning
AR	as required	INC	incorporated
ASM	assembly	LH	left hand
CARR	carriage	NI	nylon insert
DEG	degrees	PPH	Phillips pan head
FH	flat head	PTH	Phillips truss head
GA	gauge	PTO	power take off
HF	hex flange	RH	right hand
HH	hex head	SFH	slotted fillister head
HHF	hex head flange	SHH	slotted hex head
HLH	hex lag head	SQH	square head
HJ	hex jam	SHWH	slotted hex washer head
HOC	height-of-cut	SPH	slotted pan head
HS	hex socket	SRH	slotted round head
HSBH	hex socket button head	STD	standard
HSFH	hex socket flat head	TAP	self tapping
HSH	hex socket head	TTH	Torx truss head
HWH	hex washer head	WH	wing head
HWHTF	hex washer head thread forming		

PROTOTYPE

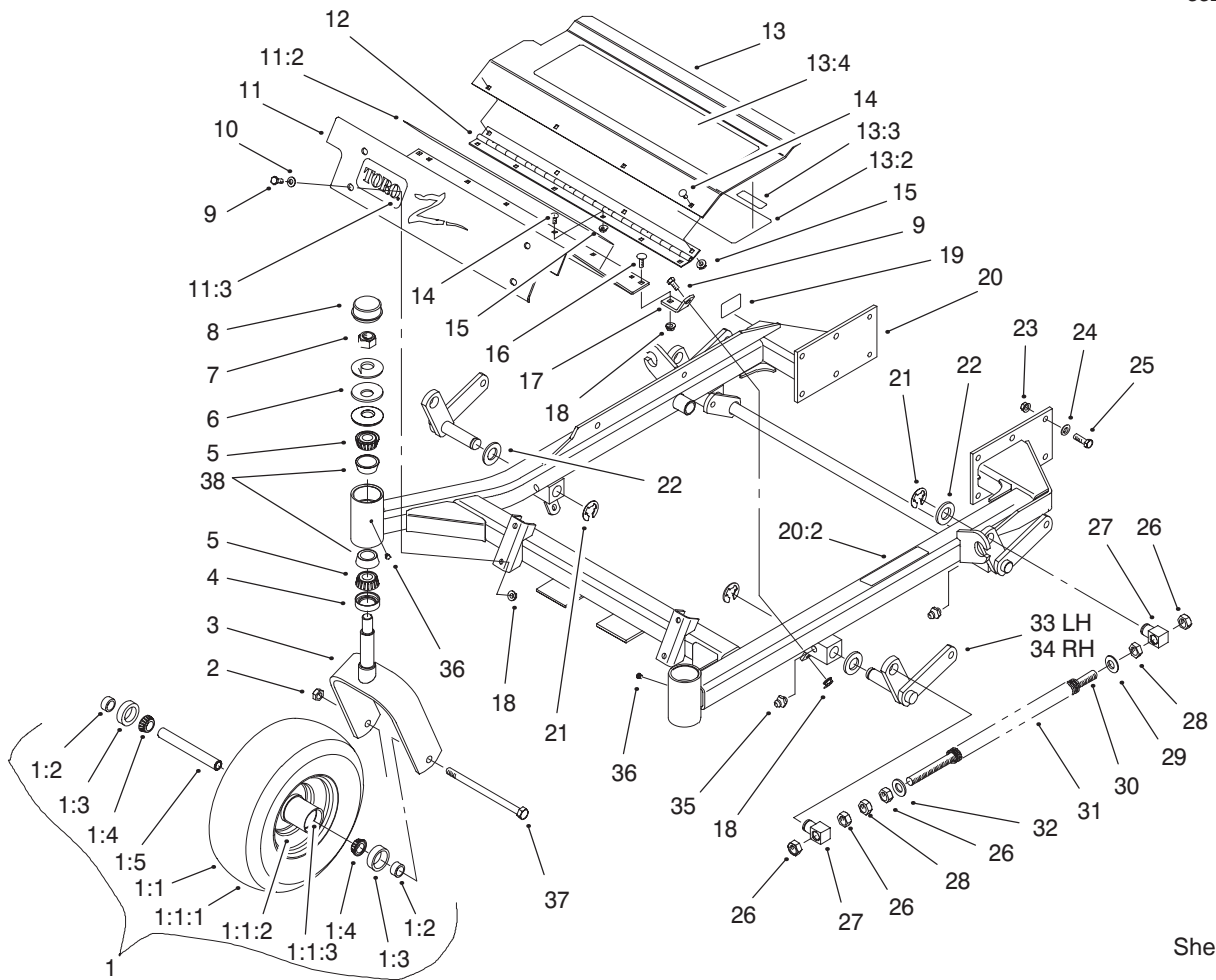


Sheet No.:2

Front Frame Assembly

Ref. No.	Part No.	Qty.	Description
1	1-634662	2	Caster Wheel ASM
1:1	1-633582	1	Wheel & Tire ASM
1:1:1	1-633002	1	Tire
1:1:2	1-633583	1	Wheel
1:1:3	1-633584	2	Bearing-Cup
1:2	1-633581	2	Spacer-Bearing
1:3	1-633580	2	Seal-Bearing
1:4	1-633585	2	Bearing-Cone, Tapered
1:5	1-633579	1	Spacer,Front Caster
2	3296-45	2	Nut-Lock, NI
3	1-632511-01	2	Caster
4	1-543511	2	Seal-Grease
5	254-94	4	Bearing-Taper/Cone
6	1-633508	6	Washer-Bellville
7	3296-51	2	Nut-Lock, NI
8	1-543513	2	Cap-Grease
9	322-3	6	Screw-HH
10	3256-23	4	Washer-Flat
11	99-3940	1	Floorpan-Front
11:2	1-633553	1	Pad-Antiskid
11:3	1-633737	1	Decal-Z-Master
12	1-653049	1	Hinge,Floorpan
13	99-3930	1	Footrest ASM
13:2	99-3924	1	Decal-Service
13:3	98-5954	1	Decal-Missing, Cover

Ref. No.	Part No.	Qty.	Description
13:4	1-633553	1	Pad-Antiskid
14	3229-10	10	Screw-CARR
15	32128-33	10	Nut-HF
16	3230-1	2	Screw-CARR
17	99-3870-01	2	Bracket-Floorpan
18	32128-20	8	Nut-HF
19	88-1270	1	Decal-Safety STD
20	99-3931	1	Front Frame ASM
20:2	1-633818	1	Decal-Warning
21	32151-103	6	Ring-Snap
22	3256-29	6	Washer-Flat
23	3290-357	12	Nut-Flange, Lock
24	98-5975	12	Washer-Bellville
25	323-7	12	Screw-HH
26	3217-11	8	Nut-Hex
27	1-633441	4	Swivel-Deck Mount, Rear
28	3218-6	4	Nut-Jam
29	3256-7	2	Washer-Flat
30	1-653011	2	Rod,Deck Lift
31	1-653009	2	Spring,Compression
32	3256-27	2	Washer-Flat
33	99-3871-01	1	Lift Arm ASM - LH
34	99-3872-01	1	Lift Arm ASM - RH
35	302-19	4	Fitting-Grease
36	1-811010	2	Plug

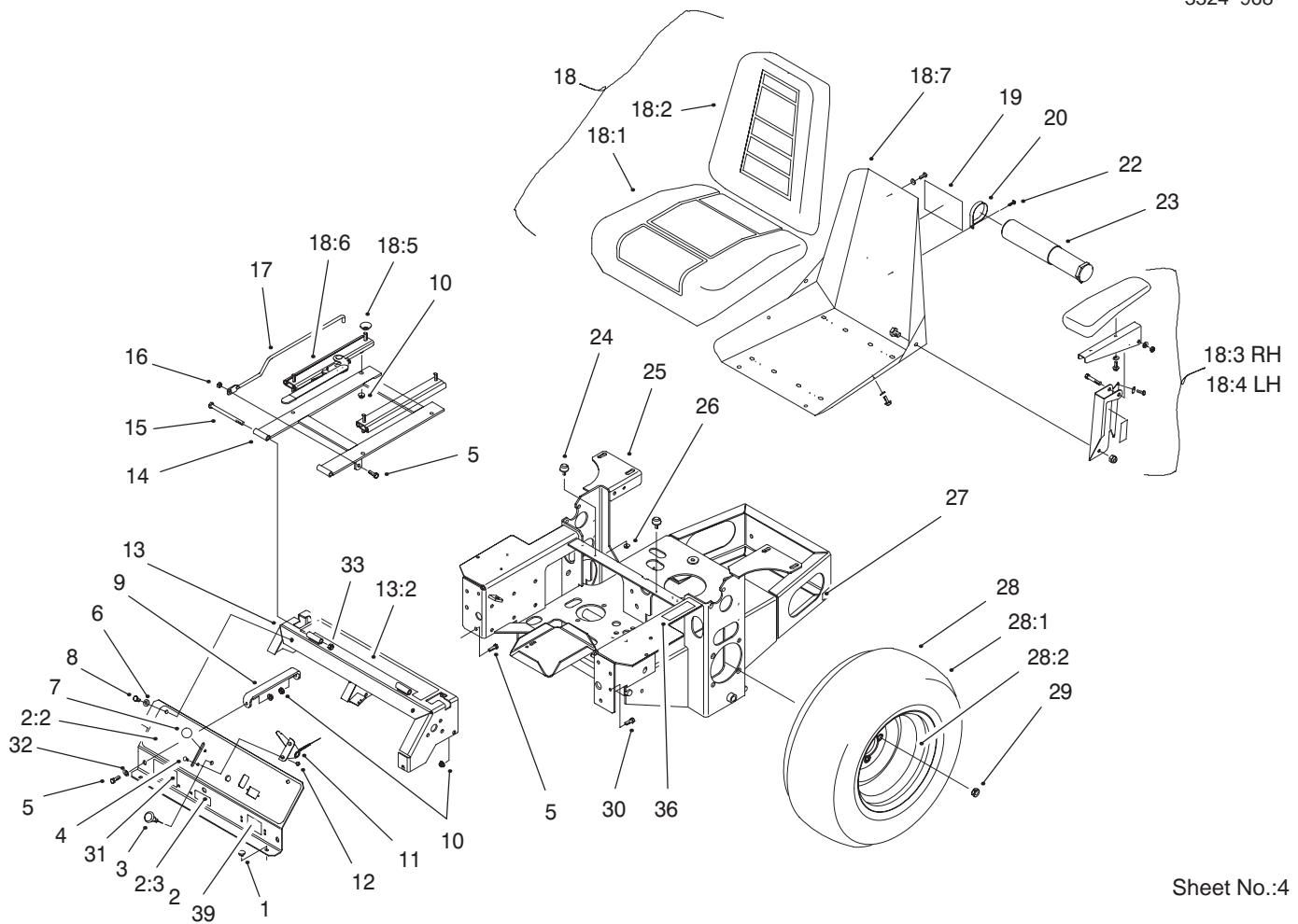


Sheet No.:2

Front Frame Assembly

Ref. No.	Part No.	Qty.	Description
37	325-36	2	Screw-HH
38	254-72	4	Bearing-Taper/Cup

Ref. No.	Part No.	Qty.	Description
<p style="font-size: 48px; opacity: 0.5; font-weight: normal;">PROTOTYPE</p>			

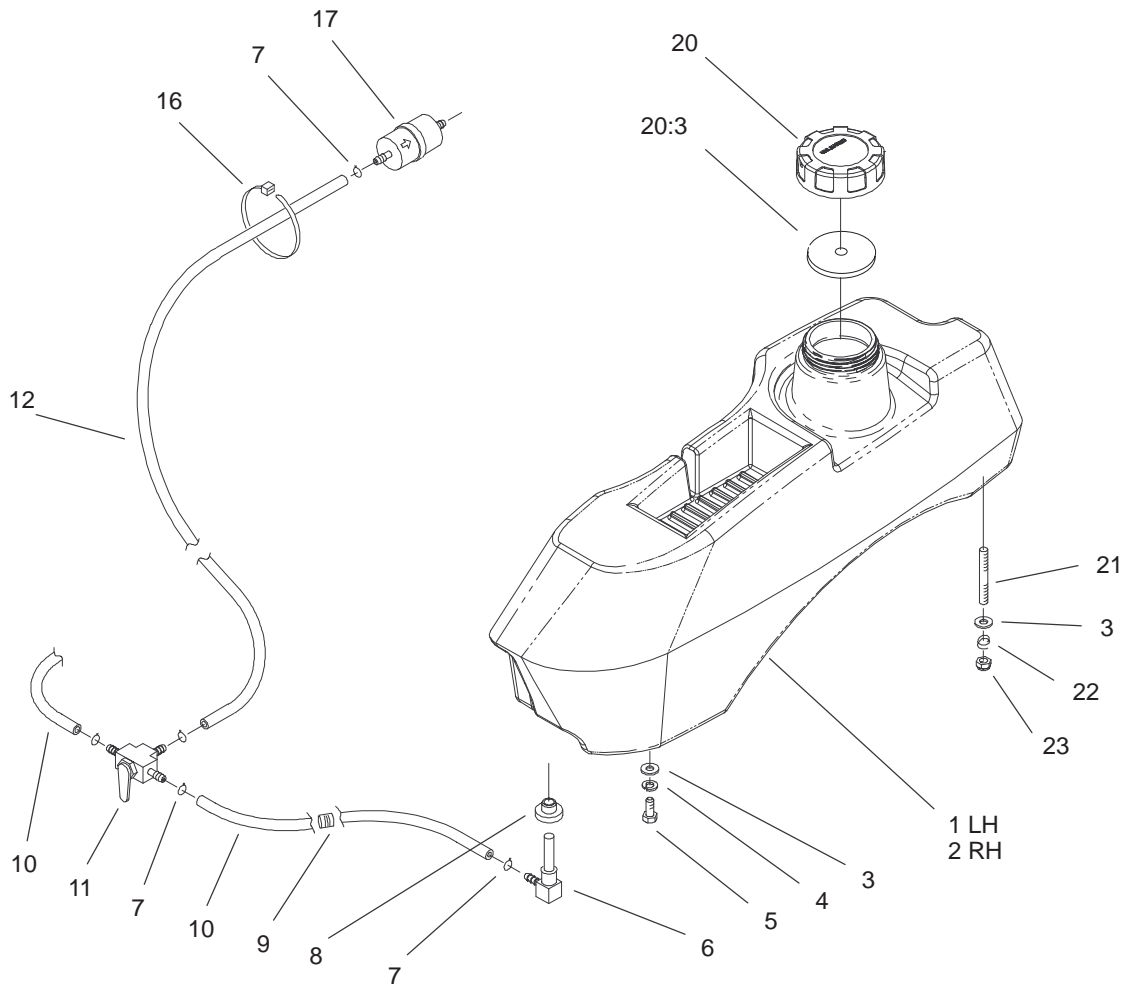


Sheet No.:4

Main Frame

Ref. No.	Part No.	Qty.	Description
1	1-513658	2	Bumper-Catcher, Grass
2	103-0724	1	Instrument Panel ASM
2:2	103-0167	1	Decal, Console
2:3	103-0262	1	Decal-Valve, Fuel
3	1-603336	1	Control-Choke
4	1-807513	2	Bolt-CARR
5	322-5	3	Screw-HH
6	3256-23	2	Washer-Flat
7	1-513592	1	Knob-Ball, Red
8	322-3	3	Screw-HH
9	1-653089-03	1	Bracket
10	32128-20	12	Nut-HF
11	1-633696	1	Cable-Throttle
12	3296-2	2	Nut-Lock
13	99-3933	1	Console ASM
13:2	103-0315	2	Decal-Console
14	1-632187-03	1	Frame - Seat
15	323-21	2	Screw-HH
16	3296-29	1	Nut-Lock
17	1-653495	1	Rod-Hold Up, Seat
18	1-633705	1	Seat w/Tracks
18:1	103-0290	1	Cushion-Bottom, Seat
18:2	104-7754	1	Cushion - Back, Seat
18:3	1-633710	1	Cushion-Armrest, RH
18:4	1-633711	1	Cushion-Armrest, LH

Ref. No.	Part No.	Qty.	Description
18:5	1-543401	4	Spacer-Track
18:6	1-643255	1	Track-Seat
18:7	1-633859	1	Frame-Seat
19	99-4693	1	Decal-Toro
20	2412-120	2	R-Clamp
22	32104-76	2	Screw
23	74-0720	1	Tube-Manual
24	1-523420	2	Bumper
25	103-0712-03	1	Wld, Mainframe - Pntd
26	3296-42	2	Nut-Lock, NI
27	65-2690	2	Decal-Surface, Hot
28	1-653010	2	Wheel & Tire ASM
28:1	1-653160	1	Tire
28:2	1-653158	1	Wheel
29	242-50	8	Nut - Lug
30	322-2	6	Screw-HH
31	99-4603	1	Decal-Z147
32	3256-3	2	Washer-Flat
33	3296-39	2	Nut-Lock, NI
36	1-603845	1	Decal, Drive Release
39	98-4387	1	Decal-Protection, Ear

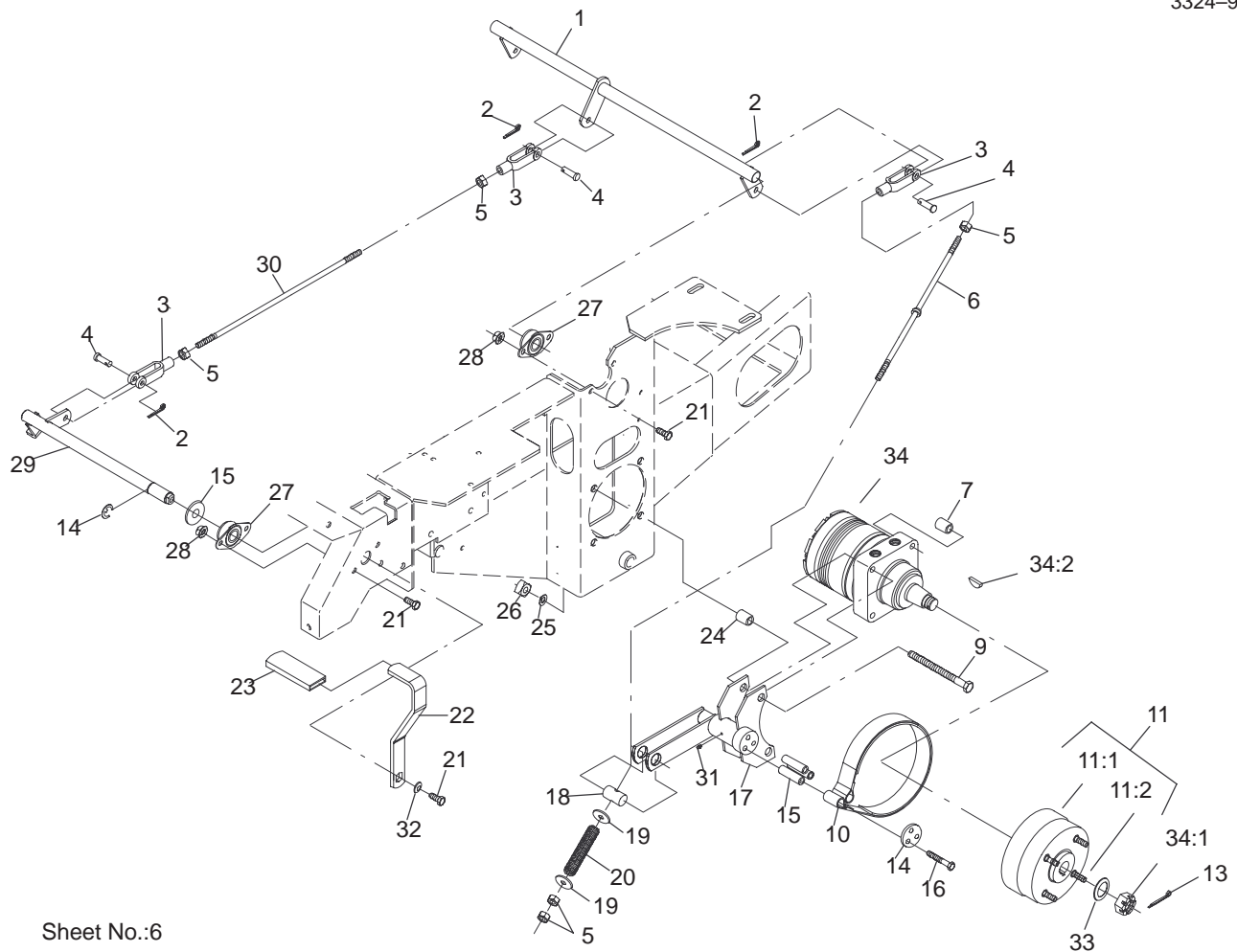


Sheet No.:5

Fuel System Assembly

Ref. No.	Part No.	Qty.	Description
1	104-5120	1	Tank - Fuel, LH
2	104-5121	1	Tank - Fuel, RH
3	3256-23	8	Washer-Flat
4	1-805005	4	Washer-Lock
5	322-3	4	Screw-HH
6	1-543277	2	Elbow-Tank, Fuel
7	1-303077	6	Clamp-Line, Fuel
8	1-513645	2	Bushing-Valve, Fuel
9	1-543296	2	Grommet, Fuel Line
10	1-543526	2	Hose, Fuel
11	1-633347	1	Valve-Fuel
12	103-0216	1	Hose-Fuel
16	1-303335	1	Tie-Plastic
17	49019-7001	1	Filter-Fuel
20	88-3980	2	Gas Cap ASM
20:3	88-4010	1	Gasket-Cap, Gas
21	1-633023	4	Stud
22	1-633349	4	Spring-Tank, Fuel
23	3296-47	4	Nut-Lock, NI

Ref. No.	Part No.	Qty.	Description
PROTOTYPE			

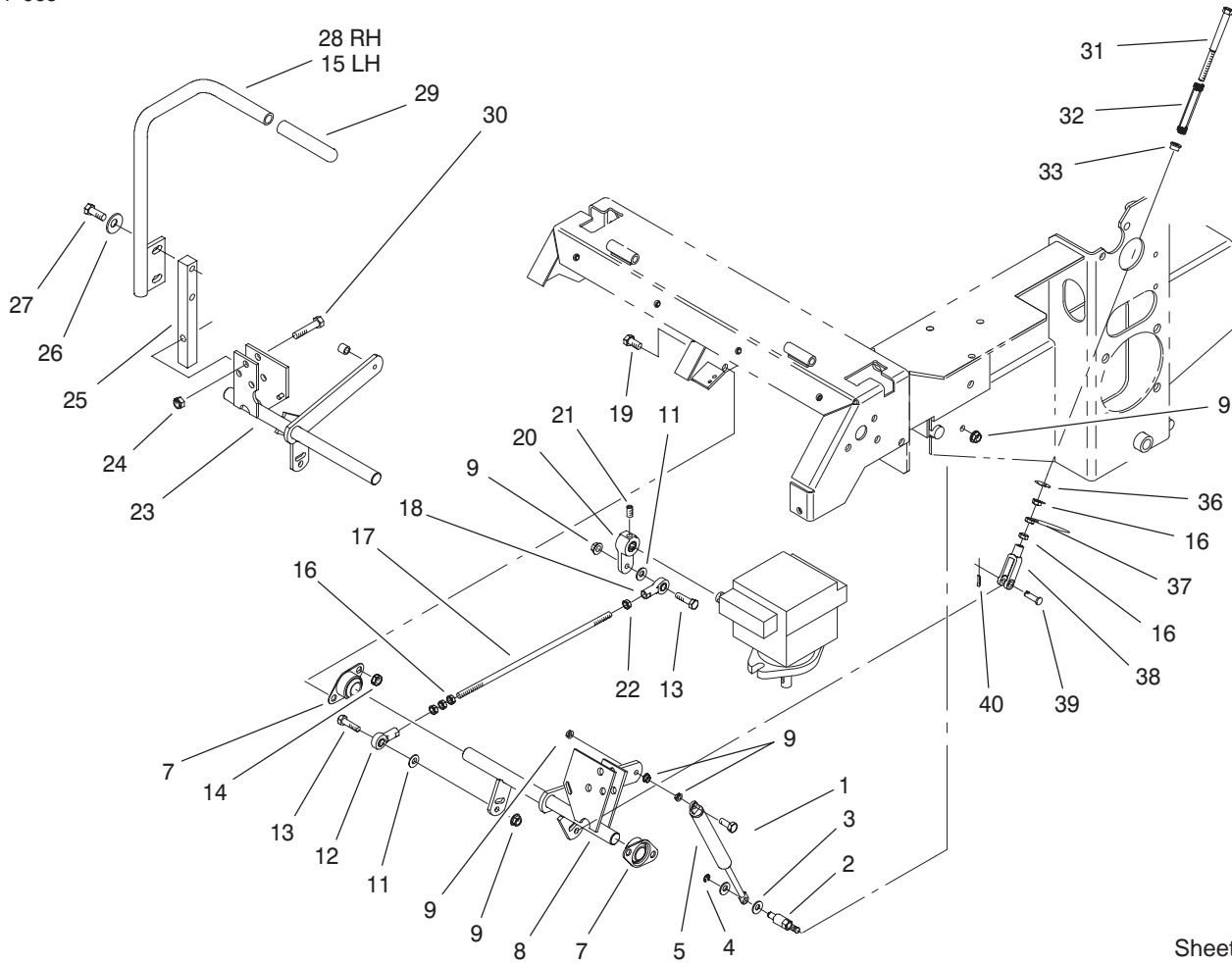


Sheet No.:6

Parking Brake System Assembly

Ref. No.	Part No.	Qty.	Description	Ref. No.	Part No.	Qty.	Description
1	1-652073-03	1	Wld, Park Brake Crank	27	1-633102	4	Bearing-Flange, Side
2	3272-10	4	Pin-Cotter	28	3290-357	8	Nut-Flange, Lock
3	1-633131	4	Yoke-Linkage, Brake	29	1-652085	1	Shaft - Parking Brake
4	1-808285	4	Pin-Clevis	30	1-653061	1	Linkage-Handle, Brake
5	3219-3	8	Nut-HH	31	1481	2	Fitting-Grease
6	103-0356	2	Rod, Brake	32	98-5975	1	Washer-Belleville
7	1-653068	4	Spacer, Wheel	33	1-523157	2	Washer-Spacer
9	325-13	8	Screw-HH	34	1-523328	2	Motor-Wheel
10	103-0355	2	Band-Brake	34:1	1-809036	1	Nut-HH
11	103-0590	2	Hub-Wheel w/Studs	34:2	3257-42	1	Key-Woodruff
11:1	103-0589	1	Hub-Wheel	*34:99	1-000099	1	Kit-Seal
11:2	1-633926	4	Stud-Heel	*34:99	1-000139	1	Kit-Bearing
13	1-806800	2	Pin-Cotter				
14	103-0374	2	Retainer-Band, Brake				
15	103-0384	6	Spacer				
16	322-9	6	Screw-HH				
17	103-0352-03	2	Bracket-Brake				
18	1-633144	2	Pin-Trunion				
19	3256-4	4	Washer-Flat				
20	1-633454	2	Spring-Brake				
21	323-4	9	Screw-HH				
22	1-653074-03	1	Handle, Park Brake				
23	1-633268	1	Grip-Lever, Brake				
24	1-653069	4	Spacer, Wheel				
25	3253-7	8	Washer-Lock				
26	103-0131	8	Nut-Square				

* Not illustrated

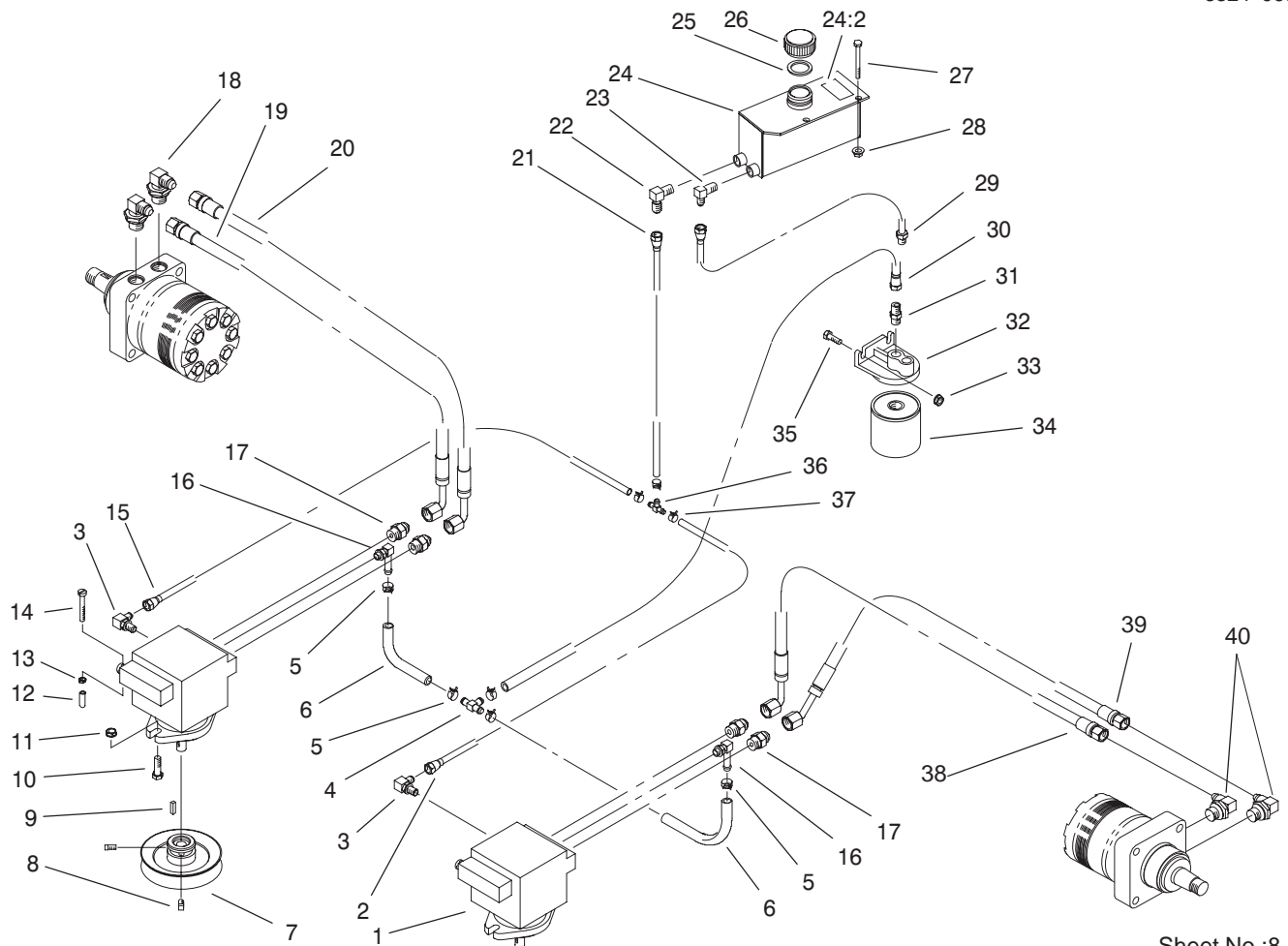


Sheet No.:7

Motion Control System Assembly

Ref. No.	Part No.	Qty.	Description
1	1-403180	2	Screw-HH
2	1-653316	2	Pin-Dampner
3	3256-23	4	Washer-Flat
4	32120-35	2	E-Ring
5	1-523027	2	Damper-Control
7	1-633102	4	Bearing-Flange, Side
8	1-652467	1	Motion Control, LH
9	32128-20	12	Nut-HF
11	3256-3	4	Washer-Flat
12	1-543017	2	Balljoint-RH
13	322-6	4	Screw-HH
14	3290-357	8	Nut-Flange, Lock
15	1-632191-03	1	Lever - Control, LH
16	3219-2	10	Nut-Hex
17	1-653046	2	Linkage,Pump/Lever
18	1-633152	2	Balljoint-Thread, LH
19	323-4	8	Screw-HH
20	1-653092	2	Arm,Pump Control
21	1-803022	2	Screw
22	1-804524	2	Nut
23	1-652466	1	Motion Control, RH
24	3296-39	6	Nut-Lock, NI
25	1-633177	2	Arm,Control Shaft
26	98-5975	4	Washer-Belleville
27	323-6	4	Screw-HH
28	1-632193-03	1	Lever - Control, RH

Ref. No.	Part No.	Qty.	Description
29	1-633257	2	Grip-Control, Motion
30	323-9	6	Screw-HH
31	1-603737	2	Bolt-Return, Neutral
32	1-603807	2	Spring-Return, Neutral
33	1-603735	2	Bushing-Flanged, Nylon
36	3256-2	2	Washer-Flat
37	3220-2	2	Nut
38	1-303105	2	Yoke-Adjustable
39	1-808280	2	Pin-Clevis
40	3272-5	2	Pin-Cotter

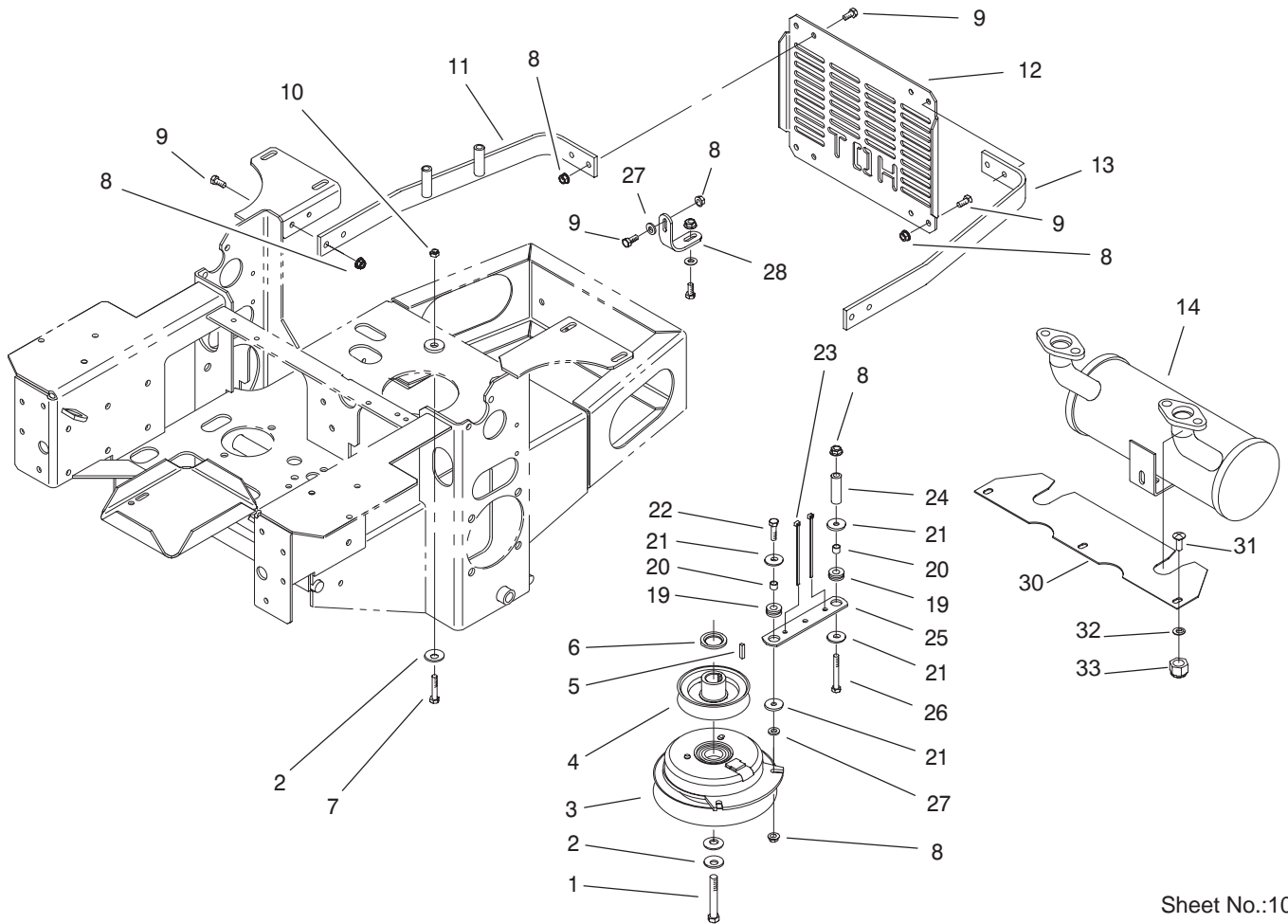


Sheet No.:8

Hydraulic System Assembly

Ref. No.	Part No.	Qty.	Description
1	1-603841	2	Pump-Hydraulic
2	1-632285	1	Hose ASM
3	1-513840	2	Fitting-90°
4	1-603721	1	Fitting-Tee, Hose
5	1-603827	5	Clamp-Hose
6	1-413273	2	Hose
7	1-653156	2	Sheave
8	1-803050	4	Screw-Set
9	1-807272	2	Key-Machine
10	323-7	4	Screw-HH
11	3290-357	4	Nut-Flange, Lock
12	1-613073	2	Grip, Dump Valve
13	3296-42	2	Nut-Lock, NI
14	1-801063	4	Screw
15	1-632286	1	Hose ASM
16	1-603989	2	Fitting
17	1-603990	4	Fitting-Straight
18	1-633605	2	Fitting, Connector
19	1-653186	1	Hose, Front
20	1-653187	1	Hose, RH Rear
21	1-654144	1	Hose
22	1-603987	1	Fitting-Elbow
23	1-603988	1	Fitting-Elbow
24	99-4625	1	Hydraulic Tank ASM
24:2	1-523552	1	Decal-Tank, Hydraulic
25	1-523103	1	Gasket-Cap, Tank

Ref. No.	Part No.	Qty.	Description
26	1-513167	1	Cap
27	321-15	2	Screw-HH
28	32128-33	2	Nut-HF
29	1-654320	1	Hose
30	1-654509	1	Hose
31	1-513510	1	Fitting, Straight
32	1-603720	1	Head-Filter
33	32128-20	2	Nut-HF
34	1-633750	1	Filter-Hydraulic
34	1-633752	1	Filter-Winter, Hydraulic
35	322-5	2	Screw-HH
36	1-603722	1	Fitting-Tee, Hose
37	1-603826	3	Clamp-Hose
38	1-653409	1	Hose, Hydraulic
39	1-653410	1	Hose, Hydraulic
40	1-633786	2	Fitting-90°



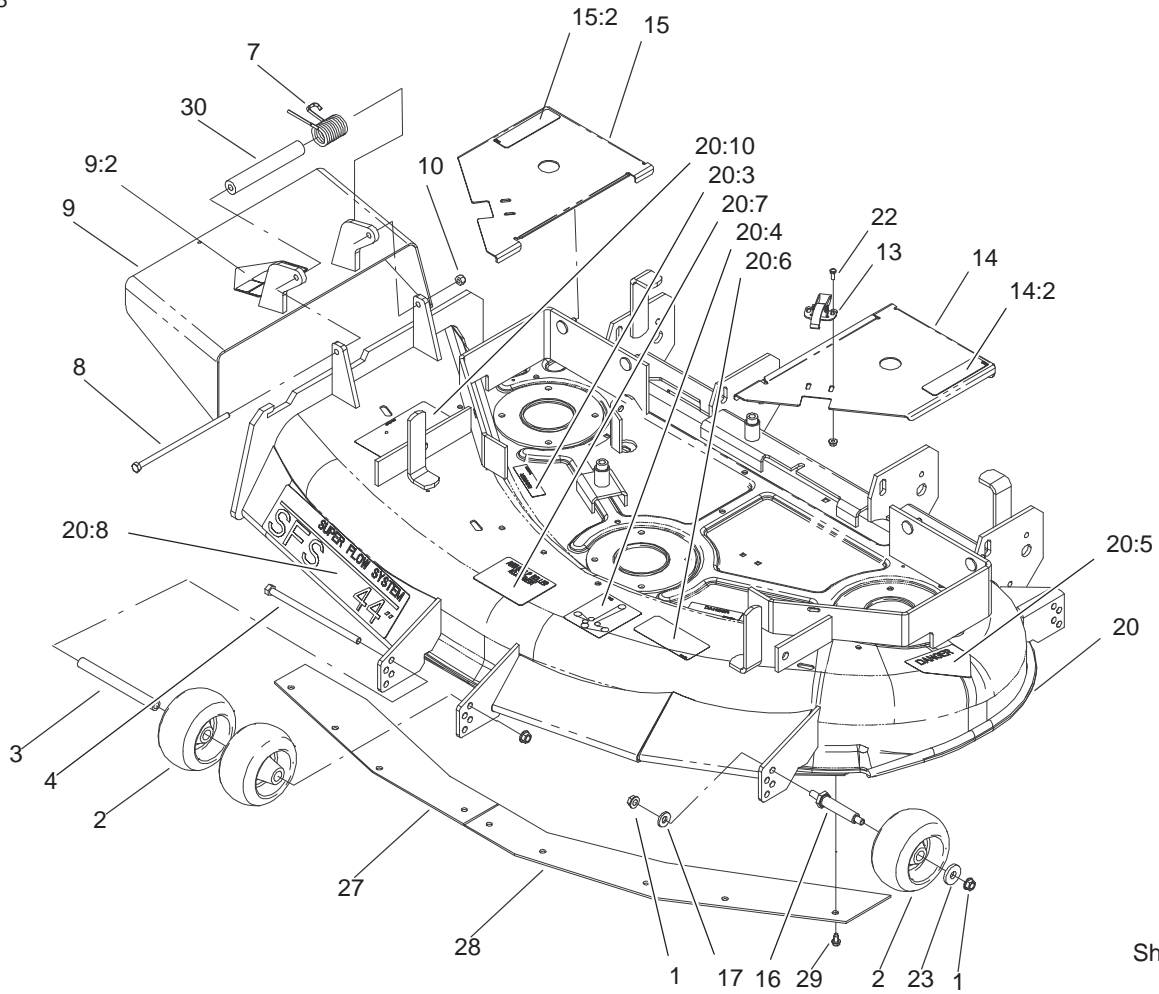
Sheet No.:10

Engine and Clutch Assembly

Ref. No.	Part No.	Qty.	Description
1	3212-12	1	Screw-Cap HH
2	1-303334	4	Washer-Spring
3	1-653048	1	Clutch, Mag Stop
4	1-653035	1	Sheave, w/Hub
5	1-807259	1	Key
6	1-543214	1	Spacer-Crankshaft
7	322-9	4	Screw-HH
8	32128-20	16	Nut-HF
9	322-3	14	Screw-HH
10	3296-29	4	Nut-Lock
11	1-652146-03	1	Strap-Guard, Engine
12	1-653095-03	1	Shield, Engine
13	1-653093-03	1	Strap, Engine Guard
14	1-653194	1	Muffler
19	1-633630	2	Grommet-Brake
20	1-633545	2	Spacer-Grommet
21	1-613235	4	Washer
22	322-6	1	Screw-HH
23	1-303335	2	Tie-Plastic
24	1-523406	1	Bushing-Mount, Seat
25	1-633543-03	1	Strap-Clutch, Brake
26	322-22	1	Screw-HH
27	3256-3	3	Washer-Flat
28	1-653196	1	Bracket, Muffler Support
30	1-653565-03	1	Shield, Heat

Ref. No.	Part No.	Qty.	Description
31	3230-1	3	Screw-CARR
32	3256-23	3	Washer-Flat
33	3296-29	3	Nut-Lock
☆99		1	Engine-Kawasaki, Fh500v-As10

☆ Not serviced



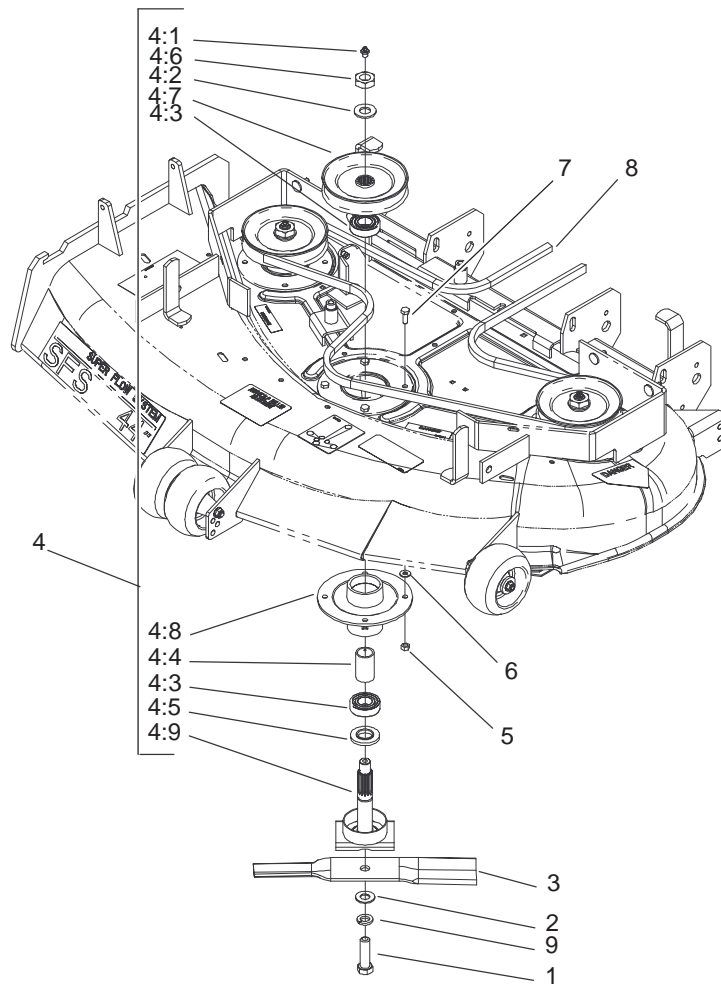
Sheet No.:12

44" Deck Assembly

Ref. No.	Part No.	Qty.	Description
1	3290-357	7	Nut-Flange, Lock
2	68-2730	5	Gage-Wheel
3	98-5967	1	Spacer - Wheel
4	323-28	1	Screw-HH
7	104-8554	1	Spring-Torsion
8	322-50	1	Screw-Cap
9	104-7783	1	Deflector ASM w/ Decals
9:2	54-9220	1	Decal-Danger
10	3296-29	1	Nut-Lock
12	32128-17	4	Nut-Lock, Flange
13	249-21	2	Clamp-Slotted
14	99-3928	1	LH Cover ASM
14:2	67-5360	1	Decal-Danger
15	99-3929	1	RH Cover ASM
15:2	67-5360	1	Decal-Danger
16	99-2842	3	Spacer-Wheel
17	98-5975	3	Washer-Belleville
20	104-7782	1	Deck ASM w/ Decals
20:3	98-5954	3	Decal-Missing, Cover
20:4	99-3943	1	Decal-Routing, Belt
20:5	43-8480	1	Decal-Danger
20:6	93-7818	1	Decal-Torque, Blade
20:7	98-3798	1	Decal-Wheel, Gage
20:8	98-8028	1	Decal-Sfs 44"
20:10	66-1340	1	Decal-Danger

Ref. No.	Part No.	Qty.	Description
22	3290-321	4	Screw-HWH
23	1-373034	3	Washer-Swivel
27	100-3257-03	1	Plate-Blowout,RH
28	100-3258-03	1	Plate-Blowout,LH
29	12-3270	9	Screw
30	104-8555	1	Spacer-Deflector, Mounting

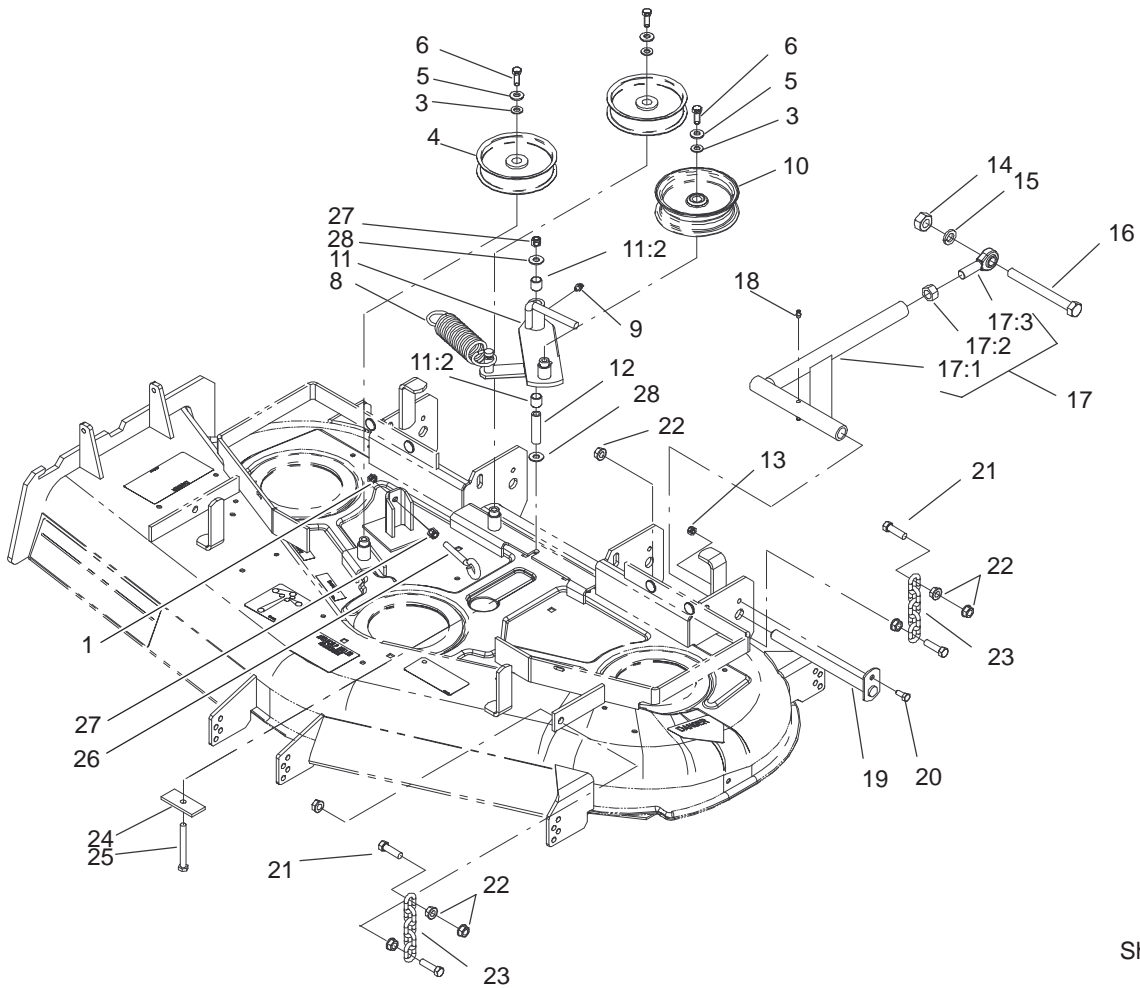
PROTOTYPE



Sheet No.:13

44" Deck Spindle Assembly

Ref. No.	Part No.	Qty.	Description	Ref. No.	Part No.	Qty.	Description
1	51-4060	3	Screw-Blade				
2	3256-27	3	Washer-Flat				
3	54-0010	3	Blade				
4	100-3977	3	Spindle Housing ASM				
4:1	302-2	1	Fitting-Grease				
4:2	7-4150	1	Washer-Pinion				
4:3	251-257	2	Bearing				
4:4	67-7580	1	Spacer-Bearing				
4:5	67-7570	1	Spacer-Spindle				
4:6	32146-20	1	Nut-Jam				
4:7	100-3975	1	Pulley And Hub ASM				
4:8	67-7590	1	Spindle-Housing				
4:9	100-3974	1	Spindle Shaft ASM				
5	32152-1	12	Nut-Lock, NI				
6	3256-2	4	Washer-Flat				
7	322-4	12	Screw-HH				
8	98-3780	1	V-Belt-Drive, Deck				
9	3253-8	3	Washer-Lock				



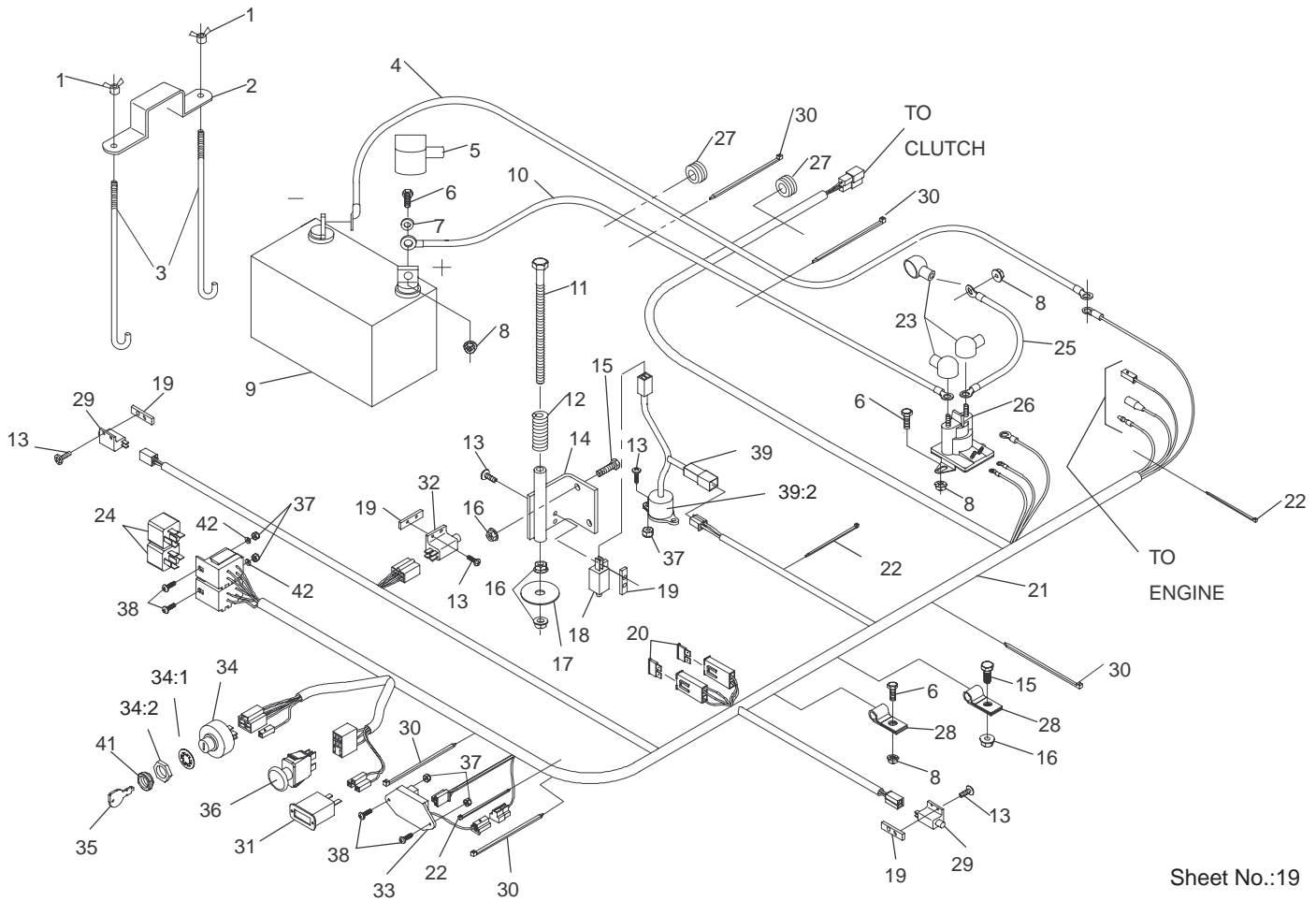
Sheet No.:16

Idler, Pulleys/Lift Strut, Chains Assembly

Ref. No.	Part No.	Qty.	Description
1	3217-7	1	Nut-Hex
3	3256-24	3	Washer-Flat
4	1-613098	2	Pulley-Idler
5	98-5975	3	Washer-Belleville
6	323-6	3	Screw-HH
8	1-633151	1	Spring-Extension
9	302-40	1	Fitting-Grease
10	99-8912	1	Pulley-Idler, Flat
11	99-8914	1	Idler Arm ASM
11:2	1-513034	2	Sleeve-Bearing
12	1-603384	1	Bushing-Pivot, Idler
13	3296-29	2	Nut-Lock
14	3217-11	2	Nut-Hex
15	3253-8	2	Washer-Lock
16	1-800344	2	Screw
17	103-1081	2	ASM,Strut STD Long
17:1	103-1072-01	1	Strut-Deck
17:2	3219-6	1	Nut-Hex
17:3	1-633029	1	Balljoint-Spherical
18	302-19	4	Fitting-Grease
19	1-632199-01	2	Pin-Strut, Deck
20	322-3	2	Screw-HH
21	1-800811	8	Screw-Cap HH
22	32128-37	16	Nut-HF
23	1-633447	4	Chain-Lift, Deck
24	99-3946-01	1	Plate-Retainer, Bolt

Ref. No.	Part No.	Qty.	Description
25	1-800805	1	Screw-HH
26	94-2547	1	Eyebolt
27	3296-39	2	Nut-Lock, NI
28	1-809107	2	Washer-Hardened

PROTOTYPE



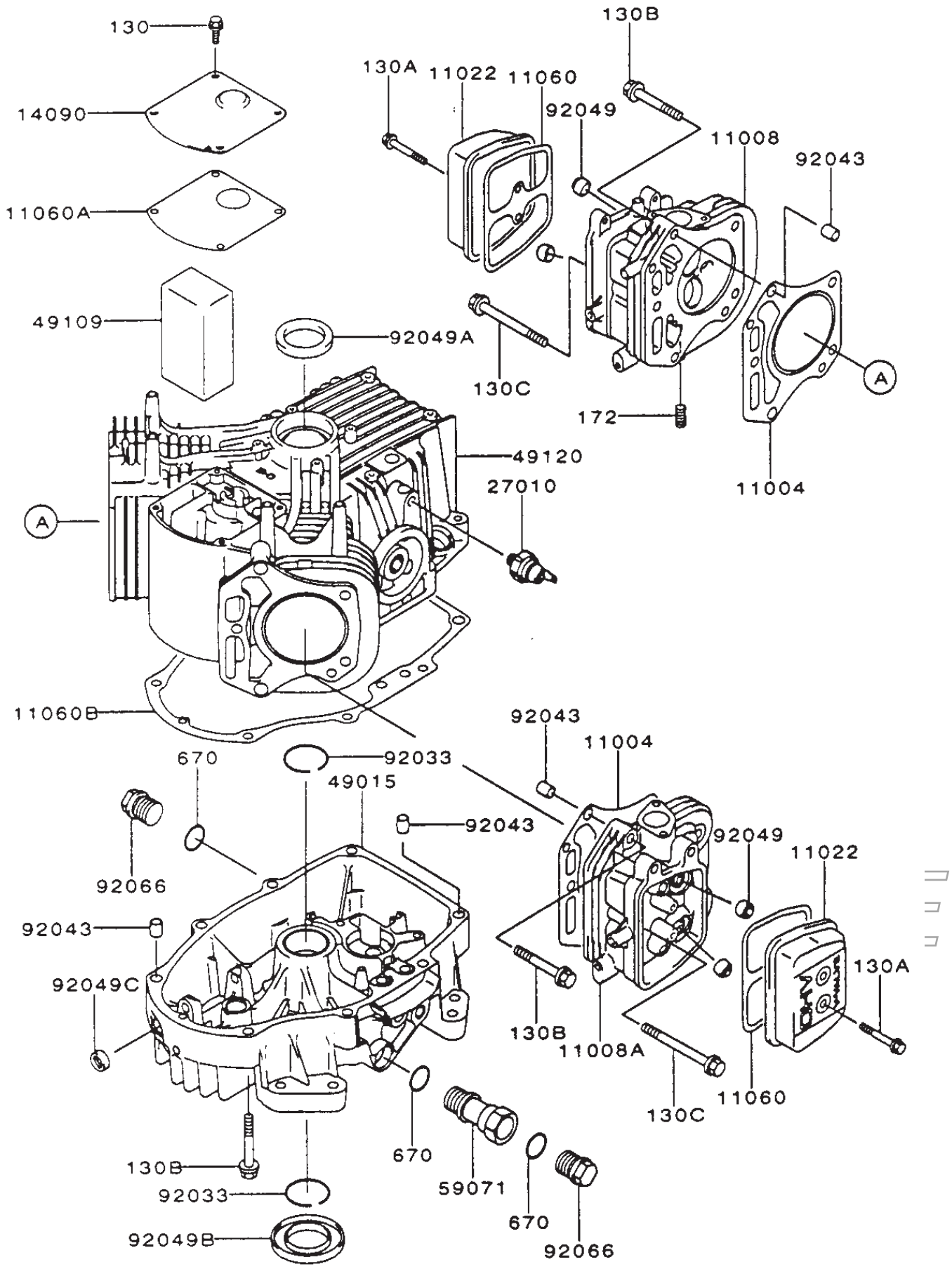
Sheet No.:19

Electrical System Assembly

Ref. No.	Part No.	Qty.	Description
1	1-543792	2	Wingnut
2	1-633652-03	1	Strap-Holddown, Battery
3	1-633651	2	Bolt-Holddown
4	103-0705	1	Cable,Ground (-)
5	1-543391	1	Insulator-Battery
6	321-4	5	Screw-HH
7	3256-2	2	Washer-Flat
8	32128-33	6	Nut-HF
9	1-603479	1	Battery
10	103-0707	1	Cable,Battery
11	1-800282	1	Screw-HH
12	1-523415	1	Spring-Switch, Seat
13	3290-500	10	Screw-PPH
14	1-652072-03	1	Wld,Seat Switch Bracket
15	322-3	3	Screw-HH
16	32128-20	5	Nut-HF
17	1-653036	1	Washer
18	1-513152	1	Switch-Closed, Normally
19	1-633181	4	Plate-Tapped
20	1-816001	2	Fuse-Type, Blade
21	103-0623	1	Harness,Wire Lhp Ka
22	1-303287	3	Tie-Plastic
23	1-543393	3	Insulator-Solenoid

Ref. No.	Part No.	Qty.	Description
24	1-643275	2	Relay
25	1-633306	1	Wire,Starter
26	1-513075	1	Switch,12v Solenoid
27	1-543286	2	Grommet
28	1-633396	2	Clip-Loom
29	1-513051	2	Switch-Open, Normally
30	1-303335	5	Tie-Plastic
31	1-513374	1	Meter-Hours
32	1-633111	1	Switch
33	100-6186	1	Module-Delay, Seat
34	88-9830	1	Switch-Ignition
34:1	3254-5	1	Washer-Lock, Internal
34:2	218-461	1	Nut-HH
35	63-8360	2	Key-Ignition
36	1-633673	1	Switch-Delta
37	3296-2	6	Nut-Lock
38	1-807513	4	Bolt-CARR
39	1-644427	1	Tilt Switch ASM
39:2	1-643401	1	Decal-Switch, Mercury
41	103-0499	1	Seal-Switch, Ignition
42	3256-14	2	Washer-flat

Cylinder/Crankcase Assembly Kawasaki FH500V-AS10

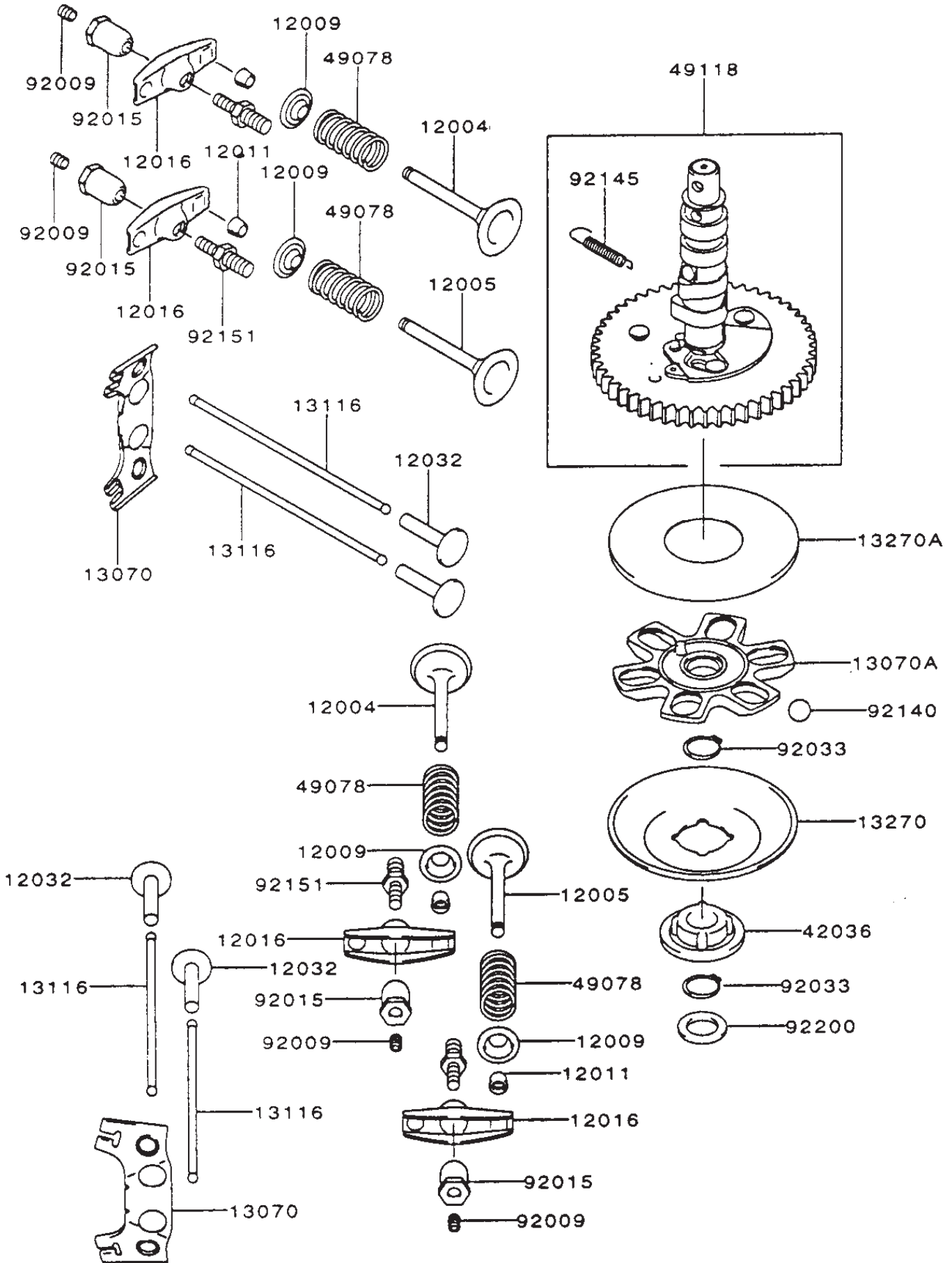


Cylinder/Crankcase Assembly Kawasaki FH500V-AS10

Ref. No.	Part No.	Qty.	Description	Ref. No.	Part No.	Qty.	Description
11004	11004-7001	2	Gasket-Head				
11008	11008-7001	1	Head-Comp-Cylinder No. 1				
11008A	11008-7002	1	Head-Comp-Cylinder No. 2				
11022	11022-7001	2	Case-Rocker				
11060	11060-7001	2	Gasket, Rocker Case				
11060A	11060-7002	1	Gasket, Breather				
11060B	11060-7007	1	Gasket, Crankcase Cover				
14090	14090-7001	1	Cover, Breather				
27010	27010-7001	1	Switch				
49015	49015-6205	1	Cover-Crankcase				
49109	49109-7001	1	Element-Breather				
49120	49120-6117	1	Crankcase-Comp				
59071	59071-7003	1	Joint				
92033	92033-7003	2	Ring-Snap				
92043	92043-7001	6	Pin				
92049	92049-7001	4	Seal-Oil				
92049A	92049-7002	1	Seal-Oil				
92049B	92049-7004	1	Seal-Oil				
92049C	92049-7005	1	Seal-Oil				
92066	92066-7003	2	Plug				
130	130B0612	4	Bolt-Flanged				
130A	130B0640	4	Bolt-Flanged				
130B	130T0850	16	Bolt-Flanged				
130C	130T0875	2	Bolt-Flanged				
172	172G0818	4	Bolt-Stud				
670	670D2016	3	O-Ring				

PROTOTYPE

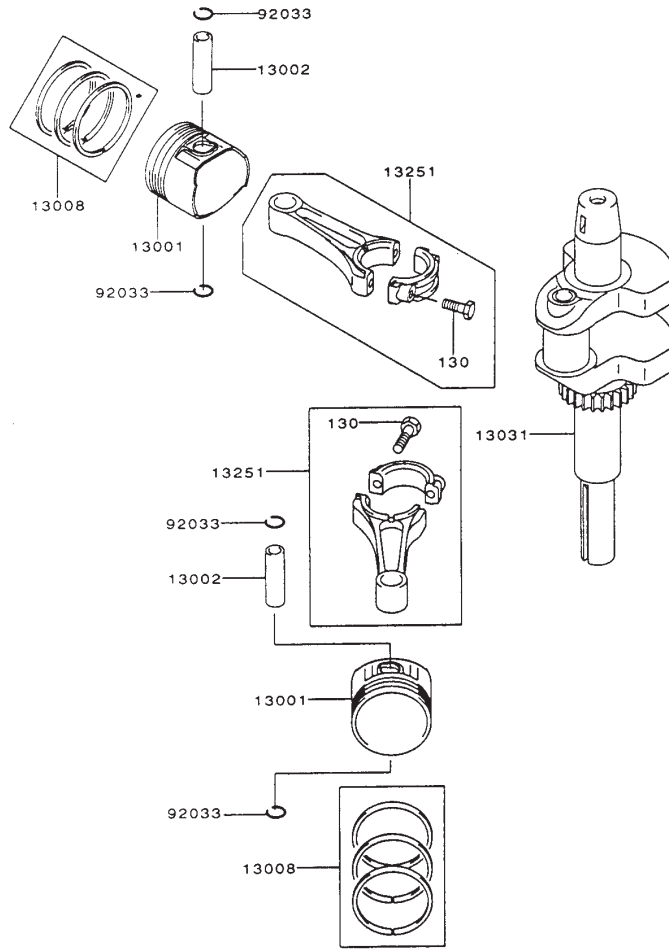
Valve/Camshaft Assembly Kawasaki FH500V-AS10



Valve/Camshaft Assembly Kawasaki FH500V-AS10

Ref. No.	Part No.	Qty.	Description	Ref. No.	Part No.	Qty.	Description
12004	12004-7001	2	Valve-Intake				
12005	12005-7001	2	Valve-Exhaust				
12009	12009-7001	4	Retainer-Valve Spring				
12011	12011-2056	8	Collet				
12016	12016-7001	4	Arm-Rocker				
12032	12032-7001	4	Tappet				
13070	13070-7001	2	Guide				
13070A	13070-7002	1	Guide				
13116	13116-2057	4	Rod-Push				
13270	13270-7002	1	Plate				
13270A	13270-7003	1	Plate				
42036	42036-7001	1	Sleeve				
49078	49078-7001	4	Spring-Engine Valve				
49118	49118-7002	1	Camshaft-Comp				
92009	92009-2341	4	Screw				
92015	92015-2253	4	Nut				
92033	92033-7001	2	Ring-Snap				
92140	92140-7002	6	Ball				
92145	92145-7001	1	Spring				
92151	92151-7001	4	Bolt				
92200	92200-7001	1	Washer				

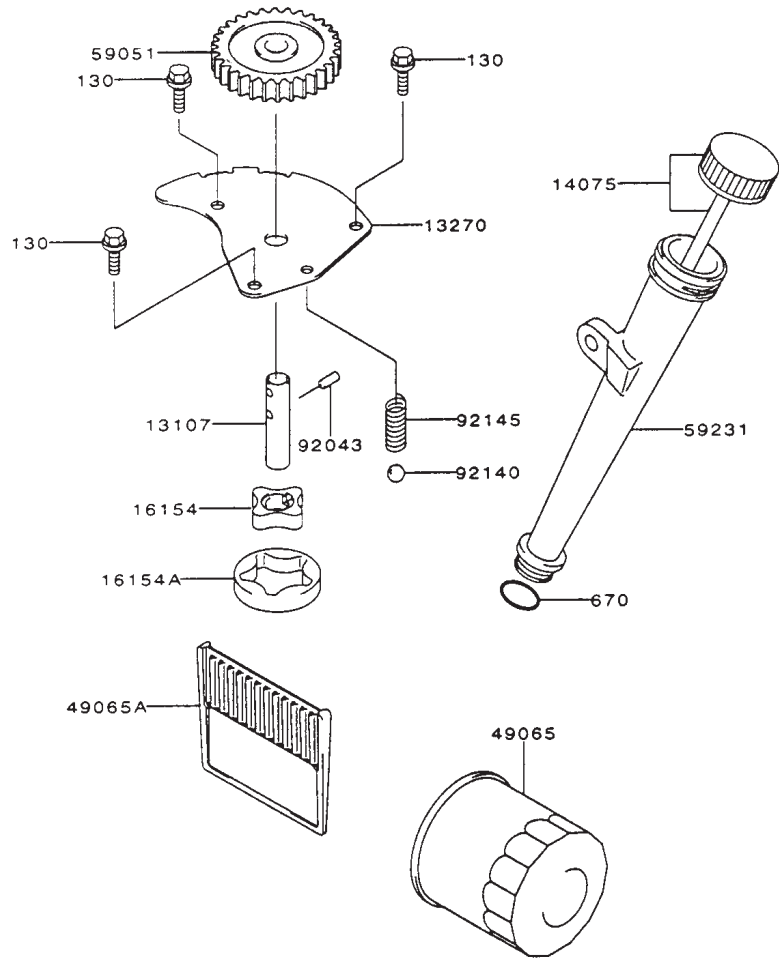
PROTOTYPE



Piston/Crankshaft Assembly Kawasaki FH500V-AS10

Ref. No.	Part No.	Qty.	Description	Ref. No.	Part No.	Qty.	Description
13001	13001-7001	2	Piston-Engine				
13002	13002-7001	2	Pin-Piston				
13008	13008-6055	2	Ring-Set-Piston				
13031	13031-7001	1	Crankshaft-Comp				
13251	13251-7001	2	Rod-Assy-Connecting				
92033	92033-7002	4	Ring-Snap				
130	130G0630	4	Bolt-Flanged				

PROTOTYPE



Lubrication-Equipment Assembly Kawasaki FH500V-AS10

Ref. No.	Part No.	Qty.	Description
13107	13107-2099	1	Shaft, Oil Pump
13270	13270-7004	1	Plate
14075	14075-7001	1	Cap-Assy
16154	16154-2053	1	Rotor-Pump, Out
16154A	16154-2054	1	Rotor-Pump, Out
49065	49065-2078	1	Filter-Oil
49065A	49065-7001	1	Filter-Oil
59051	59051-7004	1	Gear-Spur
59231	59231-7001	1	Filler
92043	92043-7003	1	Pin
92140	92140-7003	1	Ball
92145	92145-7002	1	Spring
130	130B0612	3	Bolt-Flanged
670	670D2016	1	O-Ring

Ref. No.	Part No.	Qty.	Description

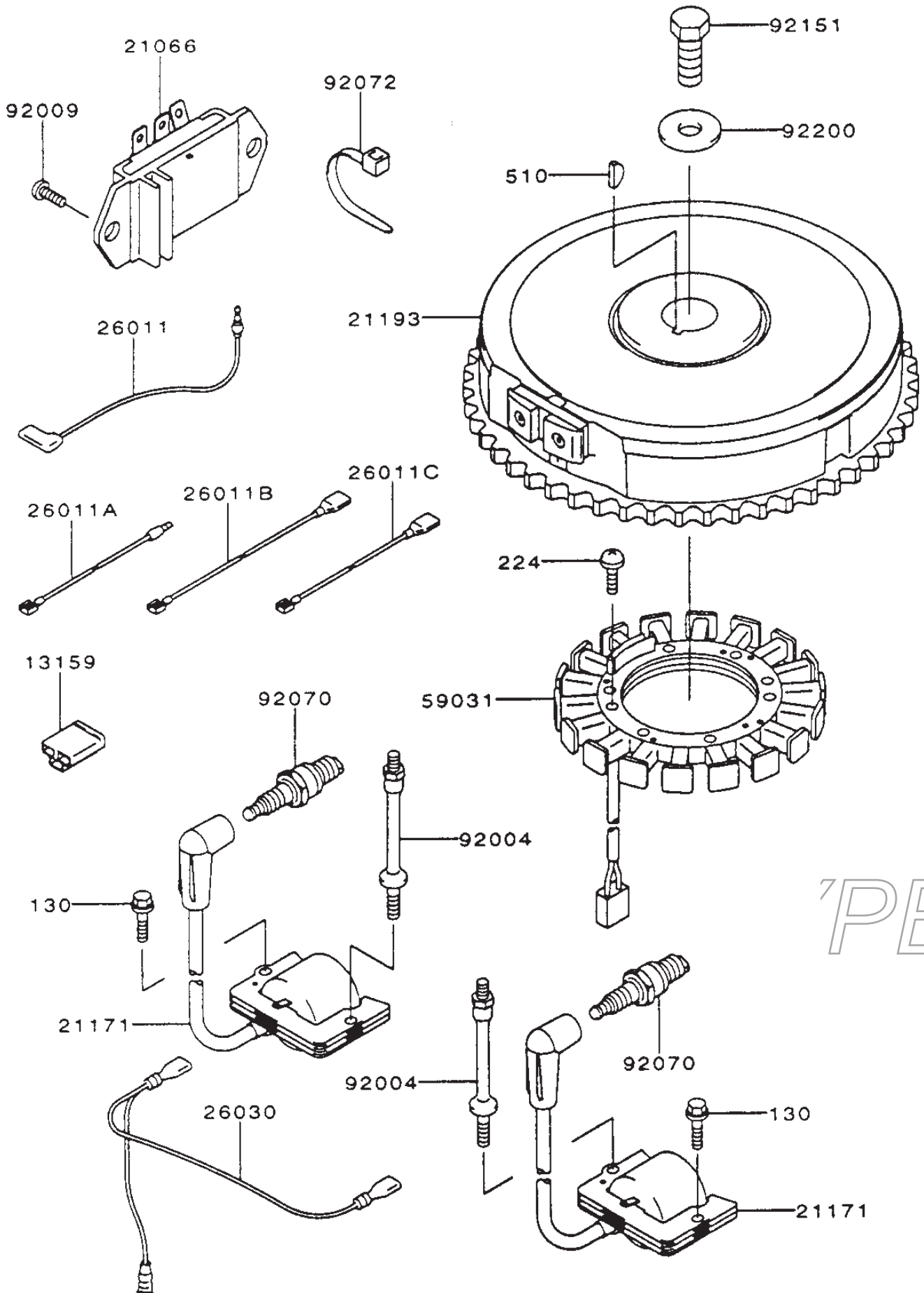
PROTOTYPE

Cooling-Equipment Assembly Kawasaki FH500V-AS10

Ref. No.	Part No.	Qty.	Description	Ref. No.	Part No.	Qty.	Description
14037	14037-7003	1	Screen				
14037A	14037-7003-9H	1	Screen				
23062	23062-7002	1	Bracket-Comp				
49089	49089-7001	1	Shroud-Engine				
49089A	49089-7002	1	Shroud-Engine				
49089B	49089-7003	1	Shroud-Engine				
55020	55020-7001	1	Guard				
59041	59041-7001	1	Fan				
59066	59066-7002	1	Housing-Fan				
92004	92004-2148	2	Stud				
92015	92015-1170	4	Nut				
92026	92026-7001	3	Spacer, 6.2x7.9x5				
92026A	92026-7003	1	Spacer, 6.5x7.9x10.5				
92026B	92026-7004	1	Spacer				
92151	92151-7009	3	Bolt, 6x10				
130	130B0612	5	Bolt-Flanged				
130A	130B0616	2	Bolt-Flanged				
130B	130B0620	1	Bolt-Flanged				
130C	130B0625	2	Bolt-Flanged				
130D	130B0816	1	Bolt-Flanged				

PROTOTYPE

Electric-Equipment Assembly Kawasaki FH500V-AS10



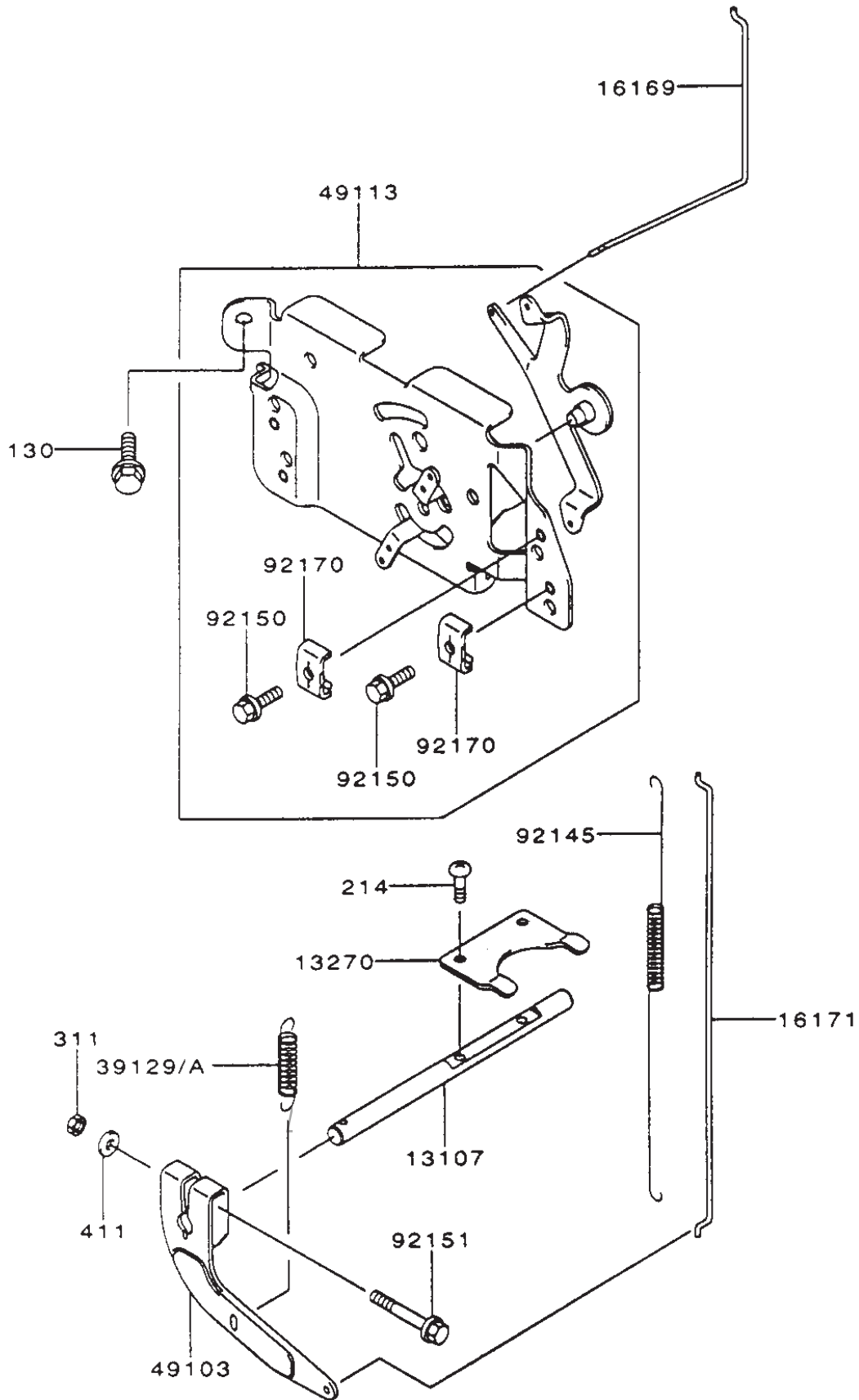
PE

Electric-Equipment Assembly Kawasaki FH500V-AS10

Ref. No.	Part No.	Qty.	Description	Ref. No.	Part No.	Qty.	Description
13159	13159-7001	1	Connector				
21066	21066-7001	1	Regulator-Voltage				
21171	21171-7001	2	Coil-Assy-Ignition				
21193	21193-7001	1	Flywheel-Assy				
26011	26011-7001	1	Wire-Lead				
26011A	26011-7002	1	Wire-Lead				
26011B	26011-7003	1	Wire-Lead				
26011C	26011-7004	1	Wire-Lead				
26030	26030-7001	1	Harness				
59031	59031-7001	1	Coil-Charging				
92004	92004-2147	2	Stud				
92009	92009-2308	2	Screw				
92070	92070-7001	2	Plug-Spark (RCJ8Y)				
92072	92072-7001	2	Band				
92151	92151-2097	1	Bolt, 12x30				
92220	92220-7002	1	Washer				
130	130B0620	1	Bolt-Flanged				
224	224B0520	4	Screw-Pan-WP-Cros				
510	510A5100	1	Key-Woodruff				

PROTOTYPE

Control-Equipment Assembly Kawasaki FH500V-AS10

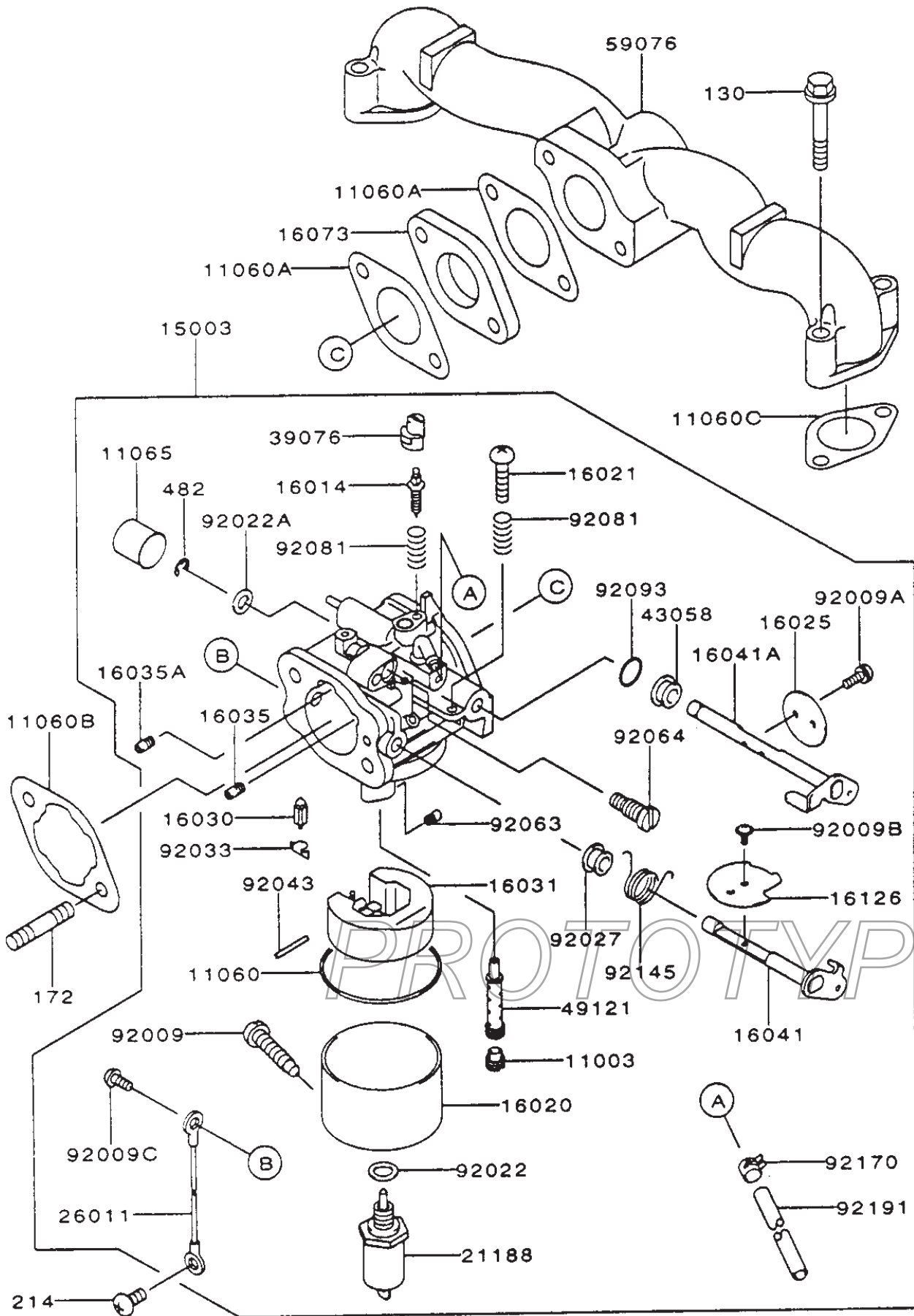


Control-Equipment Assembly Kawasaki FH500V-AS10

Ref. No.	Part No.	Qty.	Description	Ref. No.	Part No.	Qty.	Description
13107	13107-7002	1	Shaft				
13270	13270-7006	1	Plate				
16169	16169-7001	1	Link-Choke				
16171	16171-7001	1	Link				
39129	39129-7002	1	Spring-Governor				
39129A	39129-7003	1	Spring-Governor				
49103	49103-7001	1	Arm-Governor				
49113	49113-7002	1	Panel-Comp-Control				
92145	92145-7003	1	Spring				
92150	92150-2182	2	Bolt, 5x18				
92151	92151-7006	1	Bolt, 6x30				
92170	92170-7001	2	Clamp				
130	130B0612	2	Bolt-Flanged				
214	214B0408	2	Screw-Pan				
311	311B0600	1	Nut-Hex				
411	411B0600	1	Washer-Plain				

PROTOTYPE

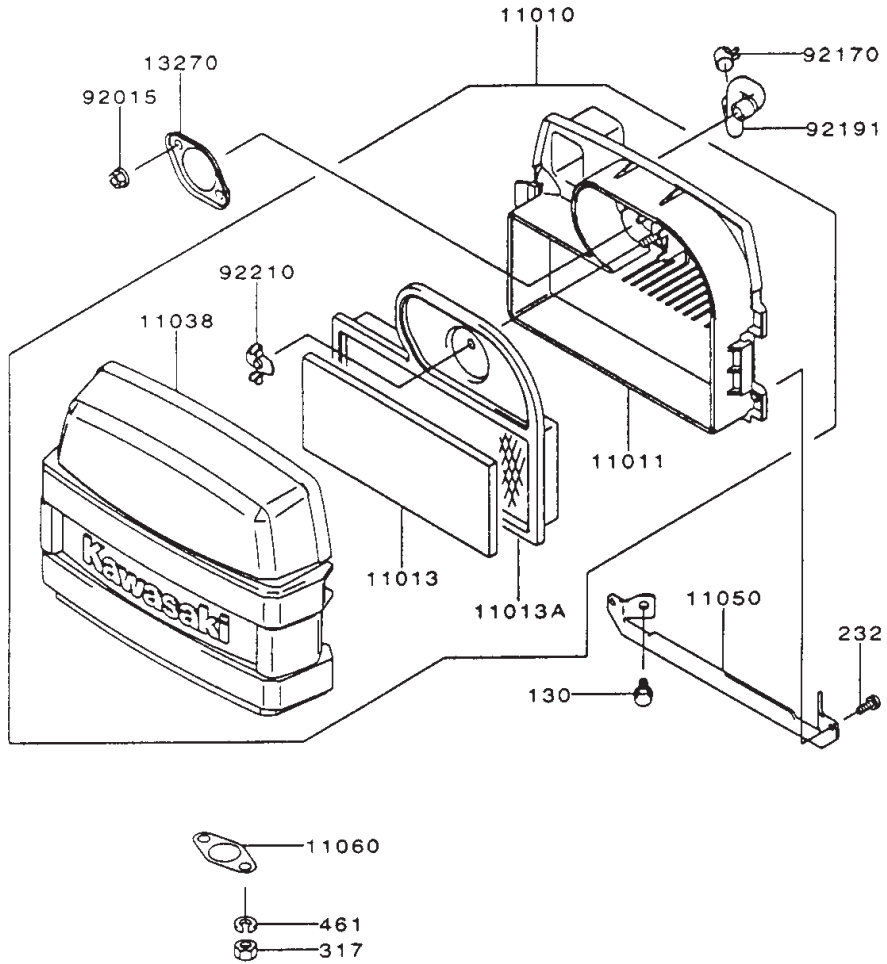
Carburetor Assembly Kawasaki FH500V-AS10



Carburetor Assembly Kawasaki FH500V-AS10

Ref. No.	Part No.	Qty.	Description	Ref. No.	Part No.	Qty.	Description
11003	11003-2105	1	Seat-Valve				
11060	11060-2406	1	Gasket				
11060A	11060-7003	2	Gasket, Insulator				
11060B	11060-7004	1	Gasket, Air Filter				
11060C	11060-7005	2	Gasket				
11065	11065-2061	1	Cap				
15003	15003-2632	1	Carburetor-Assy				
16014	16014-2080	1	Screw-Pilot Air				
16020	16020-2141	1	Chamber-Float				
16021	16021-2060	1	Screw-Throttlestop				
16025	16025-2193	1	Valve-Throttle, #130				
16030	16030-2067	1	Valve-Float				
16031	16031-2066	1	Float				
16035	16035-2060	1	Jet-Air, #1.7				
16035A	16035-2061	1	Jet-Air, #1.2				
16041	16041-2252	1	Shaft-Carburetor, Choke				
16041A	16041-2253	1	Shaft-Carburetor Throttle				
16073	16073-7001	1	Insulator				
16126	16126-2218	1	Valve				
21188	21188-2011	1	Solenoid				
26011	26011-2281	1	Wire-Lead				
39076	39076-2053	1	Limiter				
43058	43058-3716	1	Ring				
49121	49121-2222	1	Nozzle-Main				
59076	59076-7001	1	Manifold-Intake				
92009	92009-2015	1	Screw				
92009A	92009-2024	2	Screw				
92009B	92009-2081	1	Screw				
92009C	92009-2400	1	Screw				
92022	92022-2231	1	Washer				
92022A	92022-2239	1	Washer				
92027	92027-2025	1	Collar				
92033	92033-2067	1	Ring-Snap				
92043	92043-2226	1	Pin				
92063	92063-2358	1	Jet-Main				
92064	92064-2125	1	Jet-Pilot				
92081	92081-2009	2	Spring				
92093	92093-2002	1	Seal				
92145	92145-2061	1	Spring				
92170	92170-2023	1	Clamp				
92191	92191-2067	1	Tube				
130	130B0635	4	Bolt-Flanged				
172	172G0685	2	Bolt-Stud				
214	214B0510	1	Screw-Pan				
482	482L400	1	Circlip-Type-E				

PROTOTYPE

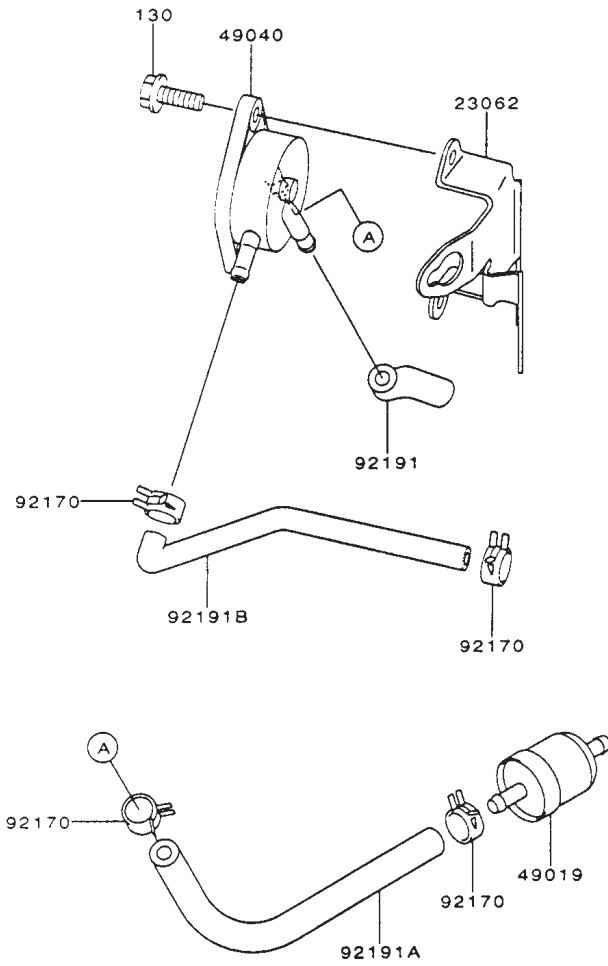


Air-Filter/Muffler Assembly Kawasaki FH500V-AS10

Ref. No.	Part No.	Qty.	Description
11010	11010-7001	1	Filter-Assy-Air
11011	11011-7001	1	Case-Air Filter
11013	11013-7001	1	Element-Air Filter
11013A	11013-7002	1	Element-Air Filter
11038	11038-7001	1	Case-Assy-Air Filter
11050	11050-7006	1	Bracket
11060	11060-7006	2	Gasket, Muffler
13270	13270-7001	1	Plate
92015	92015-1193	2	Nut
92170	92170-7003	1	Clamp
92191	92191-7001	1	Tube
92210	92210-7004	1	Nut
130	130B0612	2	Bolt-Flanged
232	232B0514	2	Screw-Pan-WS
317	317R0800	4	Nut-Hex-Small
461	461F0800	4	Washer-Spring

Ref. No.	Part No.	Qty.	Description

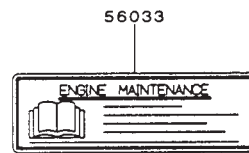
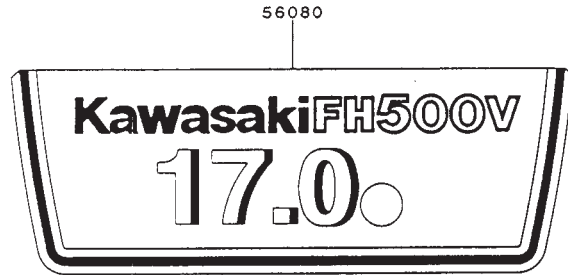
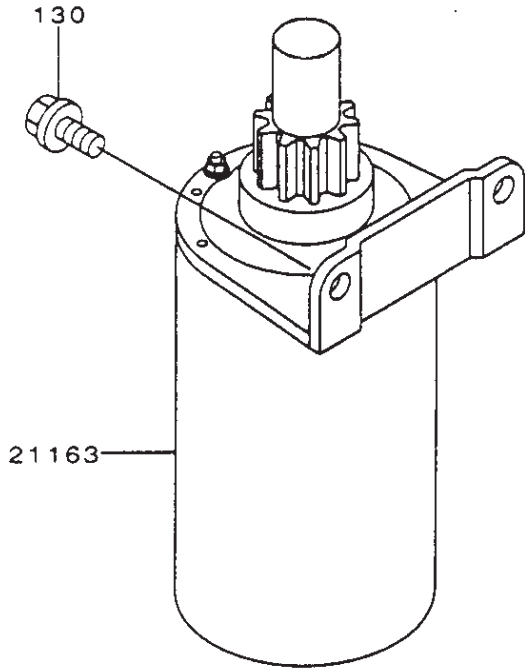
PROTOTYPE



Fuel-Tank/Fuel-Valve Assembly Kawasaki FH500V-AS10

Ref. No.	Part No.	Qty.	Description	Ref. No.	Part No.	Qty.	Description
23062	23062-7001-9H	1	Bracket-Comp				
49019	49019-7001	1	Filter-Fuel				
49040	49040-2075	1	Pump-Fuel				
92170	92170-2088	4	Clamp				
92191	92191-7002	1	Tube				
92191A	92191-7003	1	Tube,6.35x12.7x160				
92191B	92191-7004	1	Tube				
130	130B0620	2	Bolt-Flanged				

PROTOTYPE



Starter/Decals – Kawasaki FH500V-AS10

Ref. No.	Part No.	Qty.	Description
21163	21163-7001	1	Starter-Electric
130	130B0816	2	Bolt-Flanged
56033	56033-7001	1	Decal-Manual
56080	56080-7001	1	Decal-Brand

Ref. No.	Part No.	Qty.	Description

PROTOTYPE



PROTOTYPE