



Z255

Z-Master with 72" SFS Side Discharge Mower

Model No. 74227-21000001 and Up

Parts Catalog

Ordering Replacement Parts

To order replacement parts, please supply: the part number, the quantity, and the description of each part desired.

Understanding Reference Numbers

Each identified part in an illustration has a reference number. The reference number for a part also appears in the parts list, along with other information about the part.

This catalog uses two special reference number formats, one to indicate parts in a service assembly and another to indicate the quantity of a given part in an illustration.

Service Assembly Reference Numbers

Parts in service assemblies have reference numbers in the form **a:b**. The **a** represents the reference number of the entire service assembly and the **b** represents a sequential number unique to each part within the service assembly.

For example, a wheel assembly might be identified by reference number **6**, the tire by **6:1**, the valve by **6:2**, and the wheel by **6:3**. When you order the assembly identified by reference number **6**, you receive all parts identified by reference numbers **6:1**, **6:2**, and **6:3**. However, you may also order any part individually.

Reference numbers of this type appear in illustrations and in part lists.

Reference Numbers Indicating Quantity

In an illustration, if a reference number indicates more than one part, the reference number has the form **nX y**. The **n** represents the quantity of the part, the **X** is the multiplication symbol, and the **y** represents the reference number.

For example, in an illustration, the reference number **2X 37** means that two of the parts identified by reference number **37** are indicated.

Contents

Description	Page	Description	Page
Front Frame Assembly	3	Belt and Idler Arm Assembly	18
Caster and Wheel Assembly	4	Stand Assembly	19
Rear Frame and Wheel Assembly	5	Crankshaft Assembly	20
Brake and Wheel Hub Assembly	6	Crankcase Assembly	21
Control Panel Assembly	7	Oil Pan/Lubrication Assembly	22
Hydraulic System Assembly	8	Head/Valve/Breather Assembly	23
Tank and Fuel Line Assembly	10	Ignition/Electrical Assembly	24
Shield and Clutch Assembly	11	Blower Housing and Baffle	25
Idler Assembly	13	Starting System Assembly	26
Electrical System Assembly	14	Fuel System Assembly	27
Frame and Deck Assembly	15	Engine Controls Assembly	29
Deck, Deflector and Roller Assembly	16	Air Intake/Filtration Assembly	30
Spindle and Pulley Assembly	17	Exhaust Assembly	31

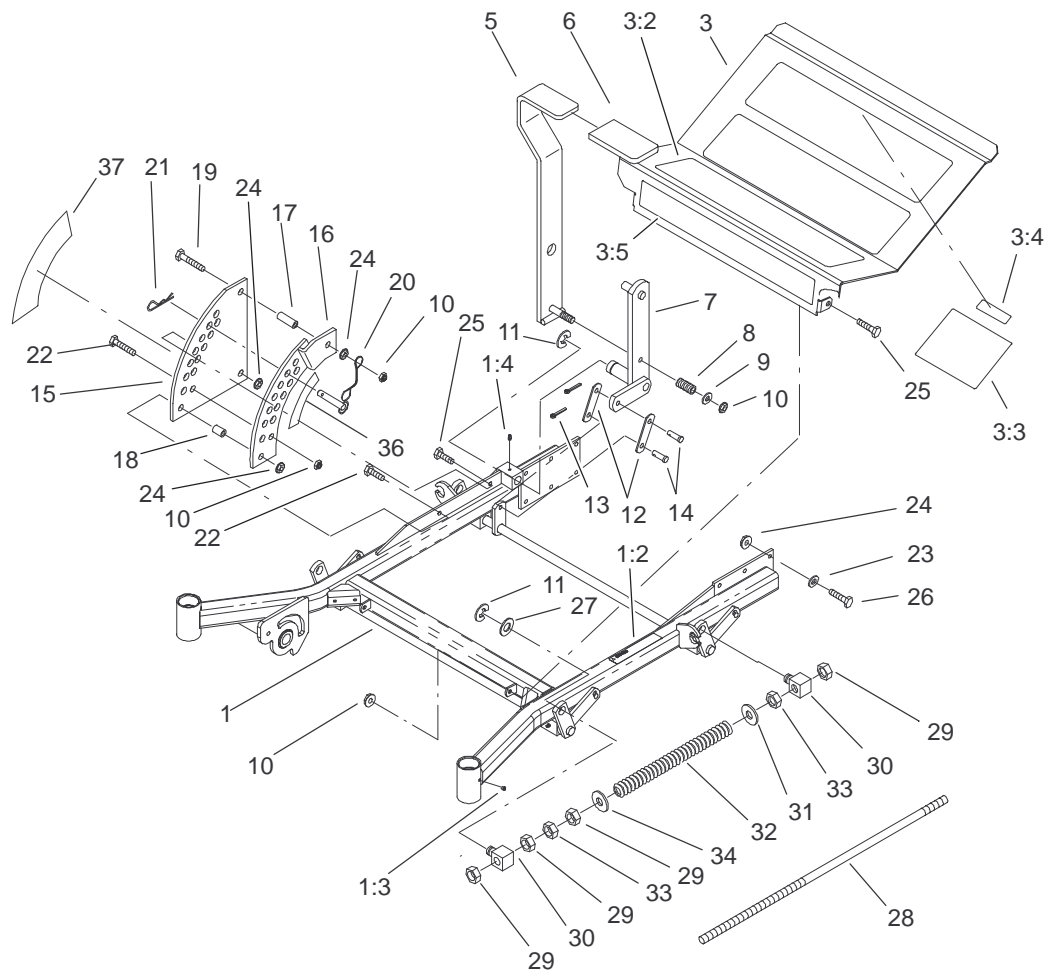
Accessories

Description	Model / Part No.	Description	Model / Part No.
High Suspension Seat	74210	Hitch Kit	99-8925
Foot Lift Assist	78473	Atomic Blade Assembly	104-1304
Roll Over Protection System Kit	78480	Stripping Kit	30163

Part Description Abbreviations

Part descriptions in this catalog may include the following abbreviations.

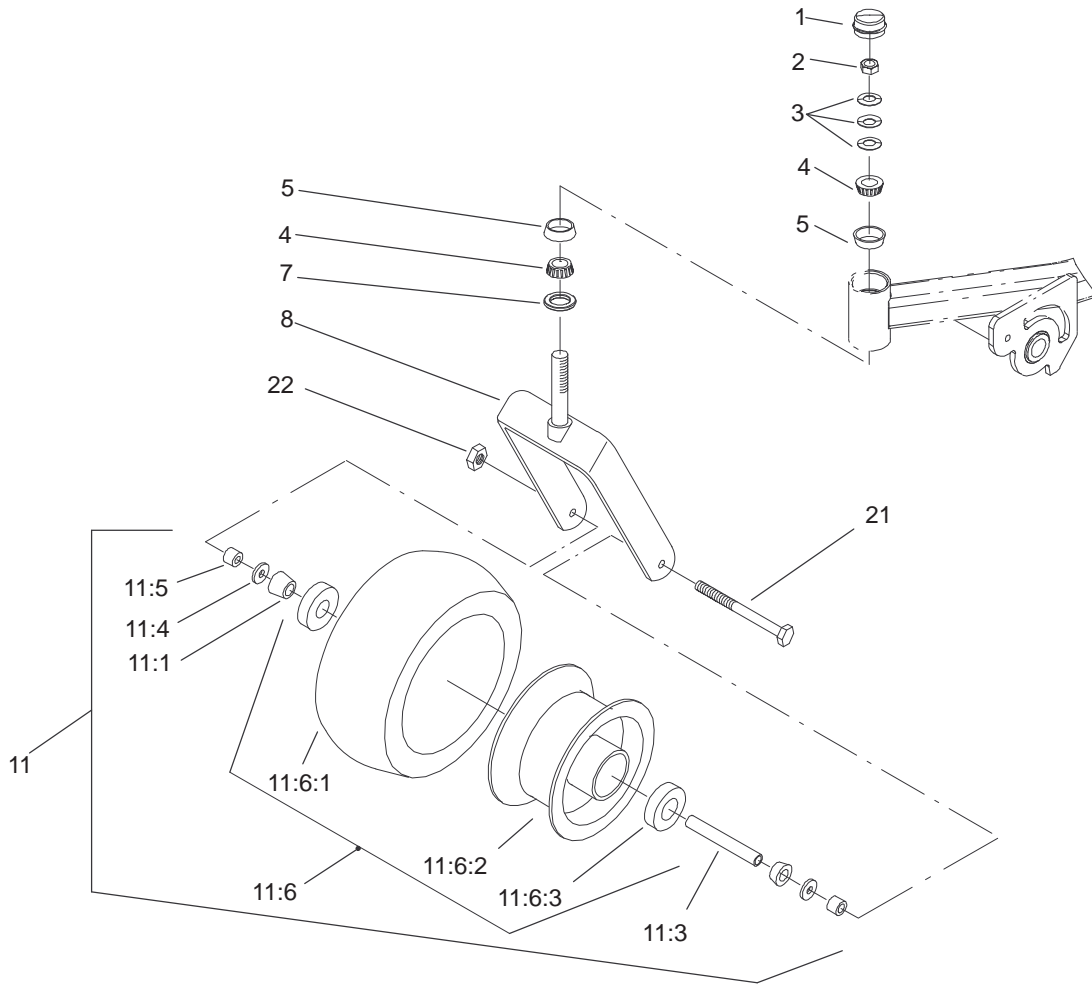
Abbreviation	Meaning	Abbreviation	Meaning
AR	as required	INC	incorporated
ASM	assembly	LH	left hand
CARR	carriage	NI	nylon insert
DEG	degrees	PPH	Phillips pan head
FH	flat head	PTH	Phillips truss head
GA	gauge	PTO	power take off
HF	hex flange	RH	right hand
HH	hex head	SFH	slotted fillister head
HHF	hex head flange	SHH	slotted hex head
HLH	hex lag head	SQH	square head
HJ	hex jam	SHWH	slotted hex washer head
HOC	height-of-cut	SPH	slotted pan head
HS	hex socket	SRH	slotted round head
HSBH	hex socket button head	STD	standard
HSFH	hex socket flat head	TAP	self tapping
HSH	hex socket head	TTH	Torx truss head
HWH	hex washer head	WH	wing head
HWHTF	hex washer head thread forming		



Sheet No.:2

Front Frame Assembly

Ref. No.	Part No.	Qty.	Description	Ref. No.	Part No.	Qty.	Description
1	104-5133	1	Frame ASM	22	323-9	2	Screw-HH
1:2	1-633818	1	Decal-Warning	23	98-5975	12	Washer-Belleville
1:3	1-811010	2	Plug	24	3290-357	15	Nut-Flange, Lock
1:4	302-19	5	Fitting-Grease	25	323-6	3	Screw-HH
3	100-6509	1	Floorpan ASM	26	323-7	12	Screw-HH
3:2	1-633553	3	Pad-Antiskid	27	3256-29	4	Washer-Flat
3:3	1-633766	1	Decal-Check	28	1-633096	2	Rod-Lift, Deck
3:4	98-5954	1	Decal-Missing, Cover	29	3217-11	8	Nut-Hex
3:5	1-633737	1	Decal-Z-Master	30	1-633441	4	Swivel-Deck Mount, Rear
5	1-632324-03	1	Lever-Lift	31	3256-7	2	Washer-Flat
6	1-633295	1	Grip-Lever, Lift	32	1-633064	2	Spring-Support, Deck
7	1-632219-03	1	Arm-Lift, Deck	33	3218-6	4	Nut-Jam
8	1-633325	1	Spring-Compression	34	3256-7	2	Washer-Flat
9	3256-24	1	Washer-Flat	36	1-633706	1	Decal-Height, Deck
10	3296-39	5	Nut-Lock, NI	37	1-633345	1	Decal-Height, Deck
11	32151-103	5	Ring-Snap				
12	1-633068	2	Arm-Lift, Deck				
13	3272-10	2	Pin-Cotter				
14	283-2	2	Pin-Clevis				
15	1-633889-01	1	Plate-Lift, Deck				
16	1-632899-01	1	Plate-Lift, Deck				
17	1-633082	1	Bushing-Lever, Lift				
18	1-633080	1	Bushing-Lever, Lift				
19	323-13	1	Screw-HH				
20	1-633097	1	Pin-Hitch w/Lanyard				
21	1-806005	1	Pin-Hair				



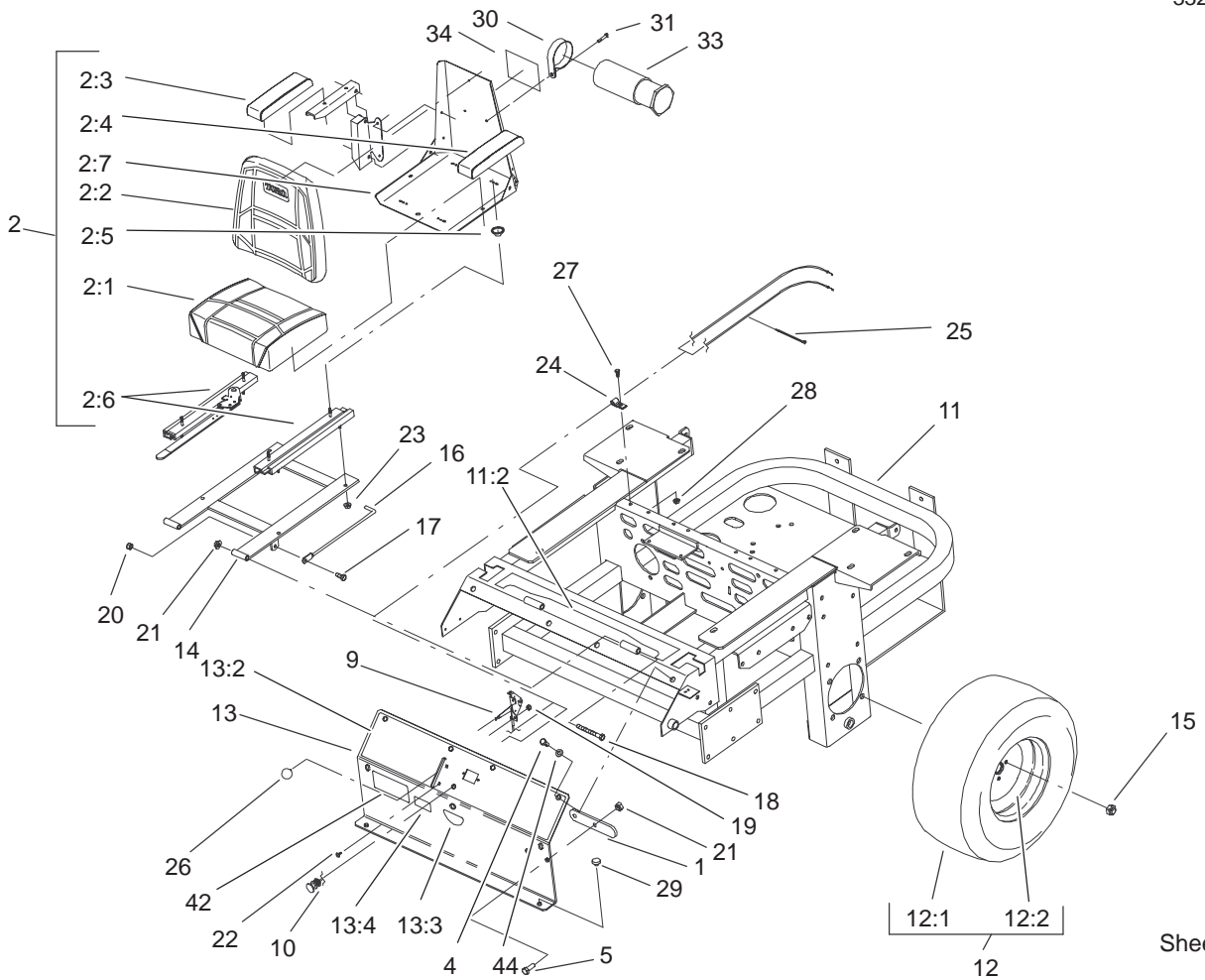
Sheet No.:3
C-2973

Caster and Wheel Assembly

Ref. No.	Part No.	Qty.	Description
1	1-543513	2	Cap-Grease
2	3296-51	2	Nut-Lock, NI
3	1-633508	6	Washer-Bellville
4	254-94	4	Bearing-Taper/Cone
5	254-72	4	Bearing-Taper/Cup
7	1-543511	2	Seal-Grease
8	1-642111-01	2	Caster
11	1-644251	2	Caster Wheel ASM
11:1	1-633585	2	Bearing-Cone, Tapered
11:3	1-633959	1	Spacer-Caster, Front
11:4	1-633580	2	Seal-Bearing
11:5	1-633581	2	Spacer-Bearing
11:6		2	Wheel & Tire ASM
11:6:1	1-523009	2	Tire
11:6:2	1-633987	2	Wheel
11:6:3	1-633584	4	Bearing-Cup
21	325-24	2	Screw-HH
22	3296-45	2	Nut-Lock, NI

Ref. No.	Part No.	Qty.	Description

PROTOTYPE

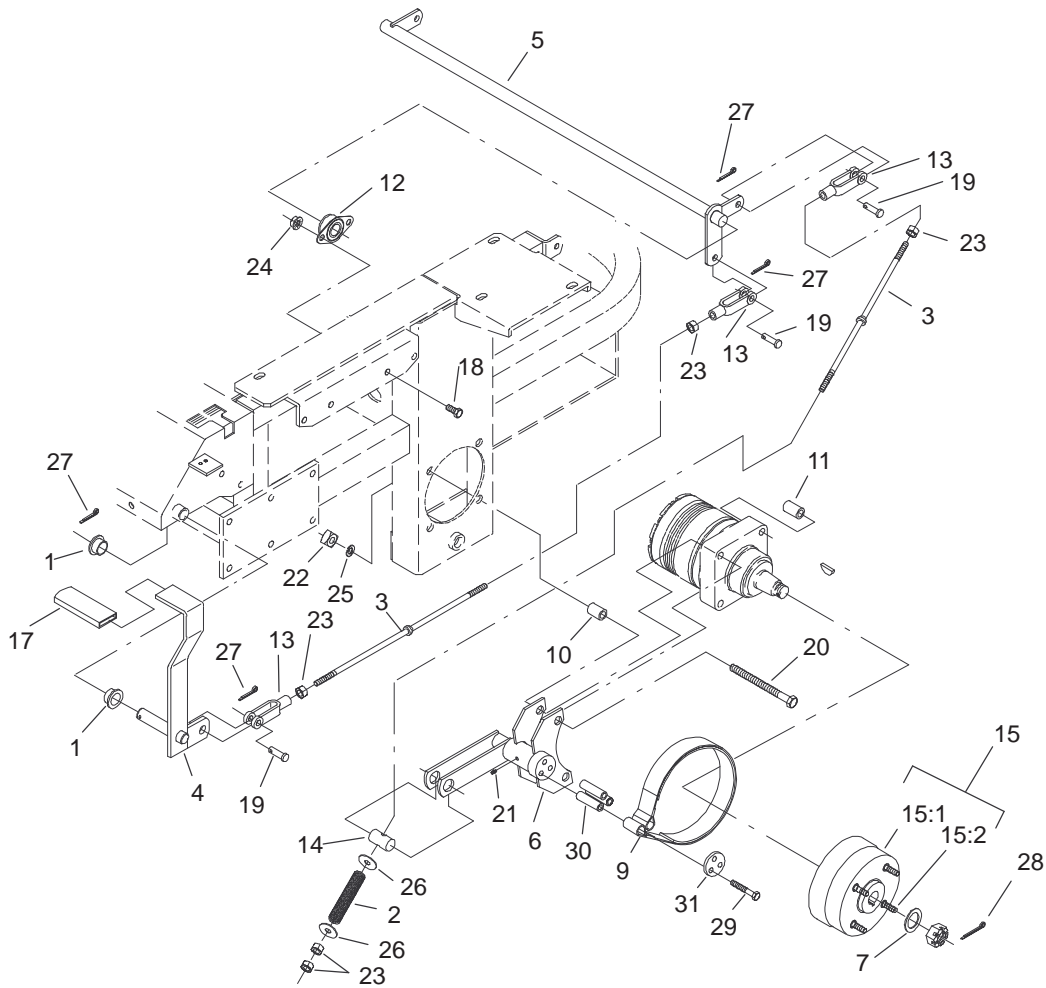


Sheet No.:4
C-2974

Rear Frame and Wheel Assembly

Ref. No.	Part No.	Qty.	Description
1	1-633964-03	1	Stop-Brake, Park
2	1-633705	1	Seat w/Tracks
2:1	103-0290	1	Cushion-Bottom, Seat
2:2	104-7754	1	Cushion - Back, Seat
2:3	1-633710	1	Cushion-Armrest, RH
2:4	1-633711	1	Cushion-Armrest, LH
2:5	1-543401	4	Spacer-Track
2:6	1-643255	1	Track-Seat, 4"
2:7	1-633859	1	Frame-Seat
4	322-3	6	Screw-HH
5	323-6	2	Screw-HH
9	1-633696	1	Cable-Throttle
10	1-603336	1	Control-Choke
11	100-4261	1	Rear Frame ASM
11:2	103-0245	1	Decal-Console, Top
12	1-633970	2	Wheel & Tire ASM
12:1	1-633993	1	Tire
12:2	1-633992	1	Wheel
13	99-4623	1	Console ASM
13:2	100-4311	1	Decal-Panel, Control
13:3	103-0262	1	Decal-Valve, Fuel
13:4	98-4387	1	Decal-Protection, Ear
14	1-632187-03	1	Frame - Seat
15	242-50	8	Nut - Lug
16	1-633293	1	Rod-Holdup, Seat
17	322-5	1	Screw-HH

Ref. No.	Part No.	Qty.	Description
18	323-21	2	Screw-HH
19	3296-2	2	Nut-Lock
20	3296-29	1	Nut-Lock
21	3296-39	4	Nut-Lock, NI
22	1-807513	2	Bolt-CARR
23	32128-20	4	Nut-HF
24	1-513762	1	Clip-Loom
25	1-303335	1	Tie-Plastic
26	1-513592	1	Knob-Ball, Red
27	321-4	1	Screw-HH
28	32128-33	1	Nut-HF
29	1-513658	2	Bumper-Catcher, Grass
30	2412-120	2	R-Clamp
31	32104-76	2	Screw
33	74-0720	1	Tube-Manual
34	99-4693	1	Decal-Toro
42	1-633736	1	Decal-Toro, Z255
44	3256-23	6	Washer-Flat

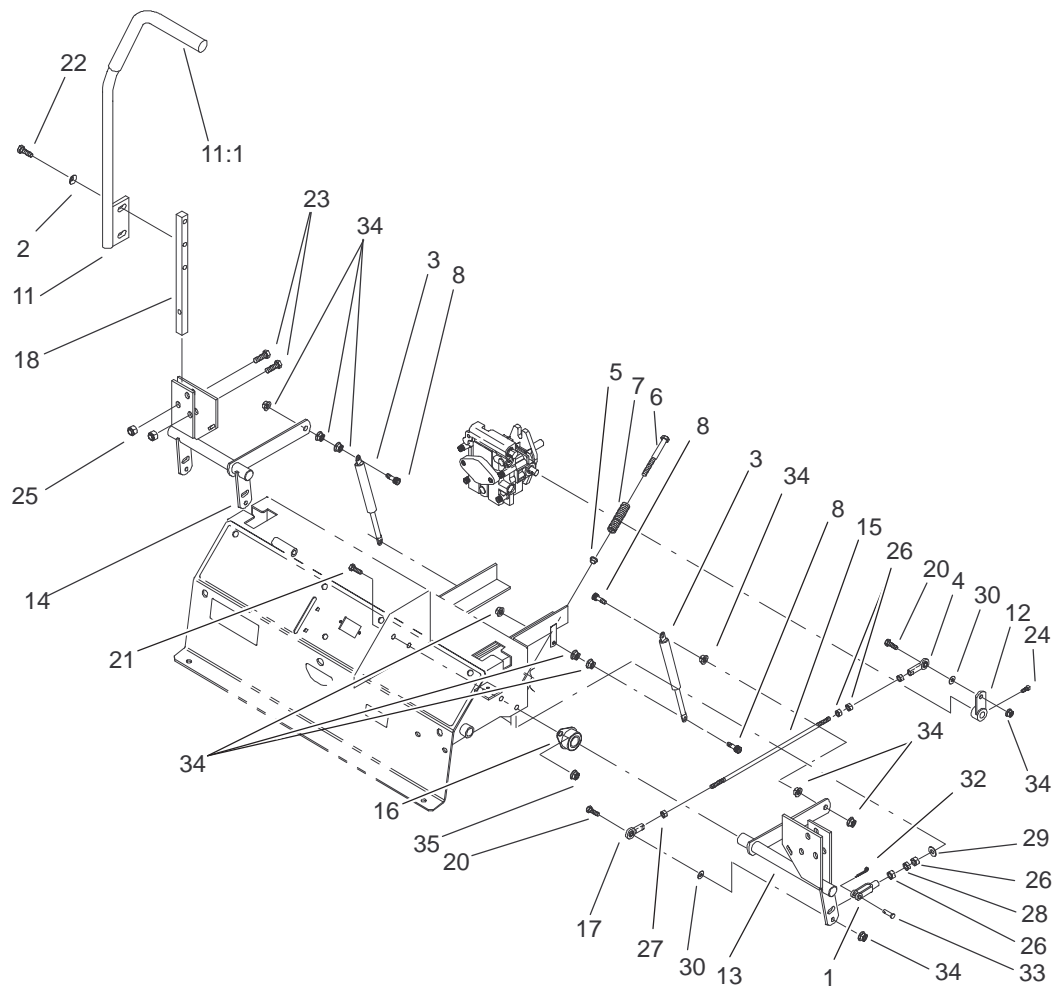


Sheet No.:5

Brake and Wheel Hub Assembly

Ref. No.	Part No.	Qty.	Description
1	1-513140	2	Bearing-Control
2	1-633454	2	Spring-Brake
3	1-633477	3	Rod-Brake
4	1-634500	1	Brake Lever/Grip ASM
5	1-632217-03	1	Shaft-Brake
6	103-0354-03	2	Bracket-Brake
7	1-523157	2	Washer-Spacer
9	103-0355	2	Band-Brake
10	1-633060	4	Spacer-Wheel, Short
11	1-633062	4	Spacer-Wheel, Long
12	1-633102	2	Bearing-Flange, Side
13	1-633131	4	Yoke-Linkage, Brake
14	1-633144	2	Pin-Trunion
15	103-0590	2	Hub-Wheel w/Studs
15:1	103-0589	1	Hub-Wheel
15:2	1-633926	4	Stud-Heel
17	1-633268	1	Grip-Lever, Brake
18	323-4	4	Screw-HH
19	1-808285	4	Pin-Clevis
20	325-20	8	Screw-HH
21	302-19	2	Fitting-Grease
22	103-0131	8	Nut-Square
23	3219-3	8	Nut-HH
24	3290-357	4	Nut-Flange, Lock
25	3253-7	8	Washer-Lock
26	3256-4	4	Washer-Flat

Ref. No.	Part No.	Qty.	Description
27	3272-10	7	Pin-Cotter
28	1-806800	2	Pin-Cotter
29	322-9	6	Screw-HH
30	103-0384	6	Spacer
31	103-0374	2	Retainer-Band, Brake

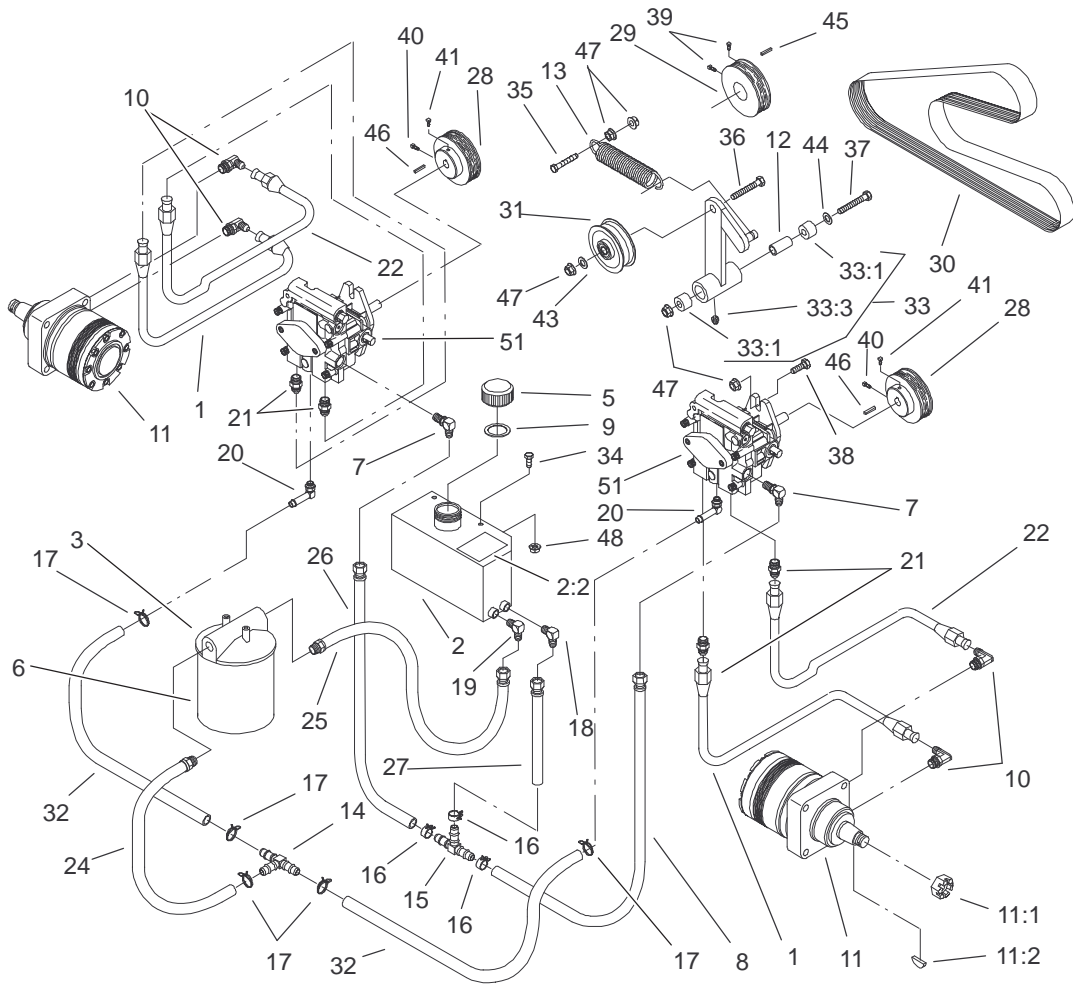


Sheet No.:6

Control Panel Assembly

Ref. No.	Part No.	Qty.	Description	Ref. No.	Part No.	Qty.	Description
1	1-303105	2	Yoke-Adjustable	27	3220-20	2	Nut-Jam
2	98-5975	4	Washer-Belleville	28	3220-2	2	Nut
3	1-523027	2	Damper-Control	29	3256-2	2	Washer-Flat
4	1-543017	2	Balljoint-RH	30	3256-3	4	Washer-Flat
5	1-603735	2	Bushing-Flanged, Nylon	32	3272-5	2	Pin-Cotter
6	1-603737	2	Bolt-Return, Neutral	33	1-808280	2	Pin-Clevis
7	1-603807	2	Spring-Return, Neutral	34	32128-20	16	Nut-HF
8	1-403180	4	Screw-HH	35	3290-357	8	Nut-Flange, Lock
11	103-0632	1	RH Lever/Grip ASM	*37	103-0631	1	LH Lever/Grip ASM
11:1	1-633257	1	Grip-Control, Motion				
12	1-632208-03	2	Arm-Control, Pump				
13	1-642319	1	Control-Motion, LH				
14	1-642320	1	Control-Motion, RH				
15	1-633153	2	Linkage-Pump/Lever				
16	1-633102	4	Bearing-Flange, Side				
17	1-633152	2	Balljoint-Thread, LH				
18	103-0407	2	Arm-Shaft, Control				
20	322-6	4	Screw-HH				
21	323-4	8	Screw-HH				
22	323-6	4	Screw-HH				
23	323-9	6	Screw-HH				
24	1-803022	2	Screw				
25	3296-39	6	Nut-Lock, NI				
26	3219-2	10	Nut-Hex				

* Not illustrated



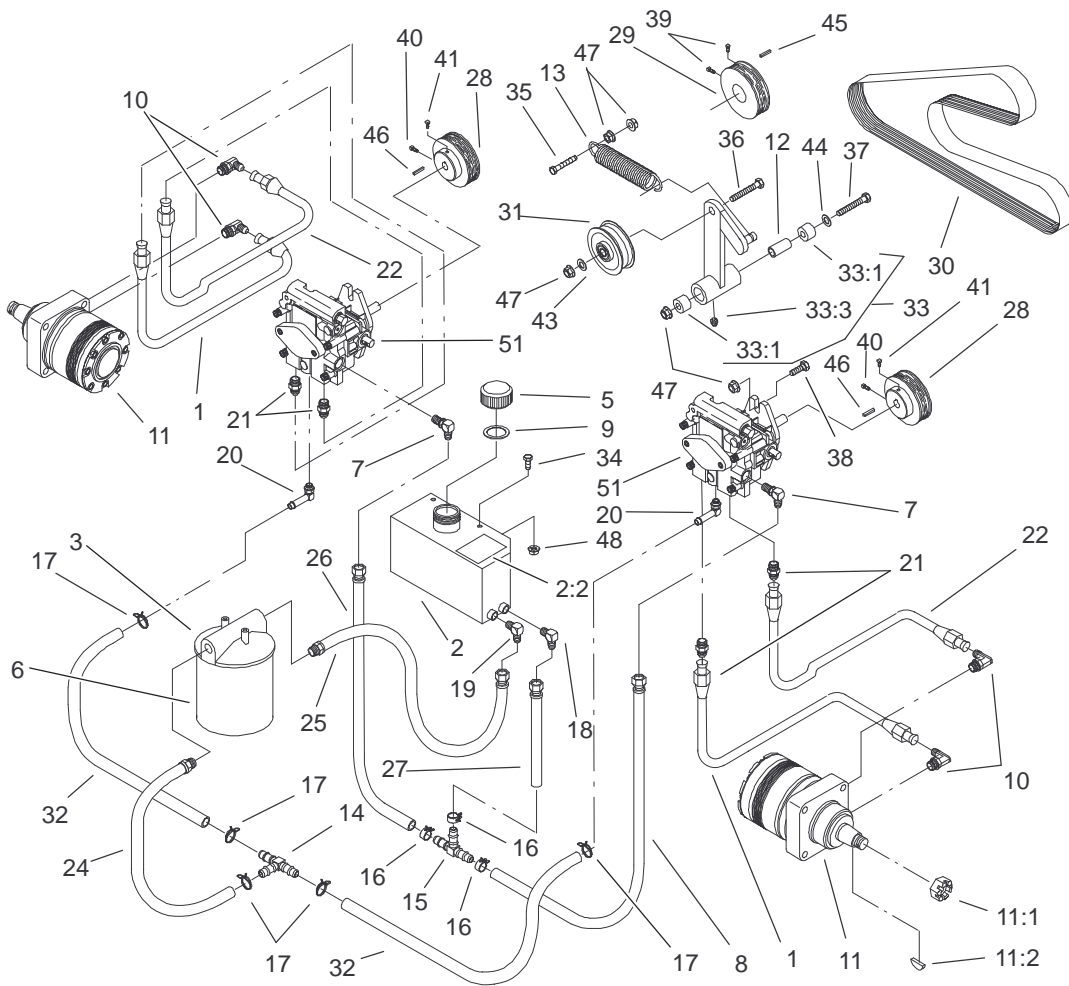
Sheet No.:7

Hydraulic System Assembly

Ref. No.	Part No.	Qty.	Description
1	1-633776	2	Hose-Upper
2	99-4625	1	Hydraulic Tank ASM
2:2	1-523552	1	Decal-Tank, Hydraulic
3	1-513006	1	Filter-Head
5	1-513167	1	Cap-Reservoir, Hydraulic
6	1-633750	1	Filter-Hydraulic
6	1-633752	1	Filter-Winter, Hydraulic
7	1-513840	2	Fitting-90°
8	1-522217	1	Low Pressure Hose ASM
9	1-523103	1	Gasket-Cap, Tank
10	1-633786	4	Fitting-90°
11	1-523328	2	Motor-Wheel
11:1	1-809036	1	Nut-HH
11:2	1-807020	1	Key-Woodruff
*11:99	1-000099	1	Kit-Seal
*11:99	1-000139	1	Kit-Bearing
12	1-603384	1	Bushing-Pivot, Idler
13	1-603413	1	Spring-Extension
14	1-603721	1	Fitting-Tee, Hose
15	1-603722	1	Fitting-Tee, Hose
16	1-603826	3	Clamp-Hose
17	1-603827	5	Clamp-Hose
18	1-603987	1	Fitting-Elbow

Ref. No.	Part No.	Qty.	Description
19	1-603988	1	Fitting-Elbow
20	1-603989	2	Fitting-Elbow
21	1-603990	4	Fitting-Straight
22	1-633777	2	Hose-Lower
24	1-632281	1	Hose ASM
25	1-632282	1	Hose ASM
26	1-632285	1	Hose ASM
27	1-632286	1	Hose ASM
28	1-633568	2	Sheave
29	1-633567	1	Sheave
30	1-633749	1	Belt-Drive, Pump
31	1-633167	1	Sheave-Idler
32	1-633335	2	Hose-Pressure, Low
33	1-634277	1	Bearing Arm ASM
33:1	1-513034	2	Sleeve-Bearing
33:3	302-40	1	Fitting-Grease
34	321-4	2	Screw-HH
35	323-8	1	Screw-HH
36	323-9	1	Screw-HH
37	1-800805	1	Screw-HH
38	323-7	4	Screw-HH
39	1-803022	2	Screw
40	3242-6	2	Screw-Set, SQH
41	3242-4	2	Screw-Set, SQH
43	3256-3	1	Washer-Flat
44	3256-4	1	Washer-Flat

* Not illustrated



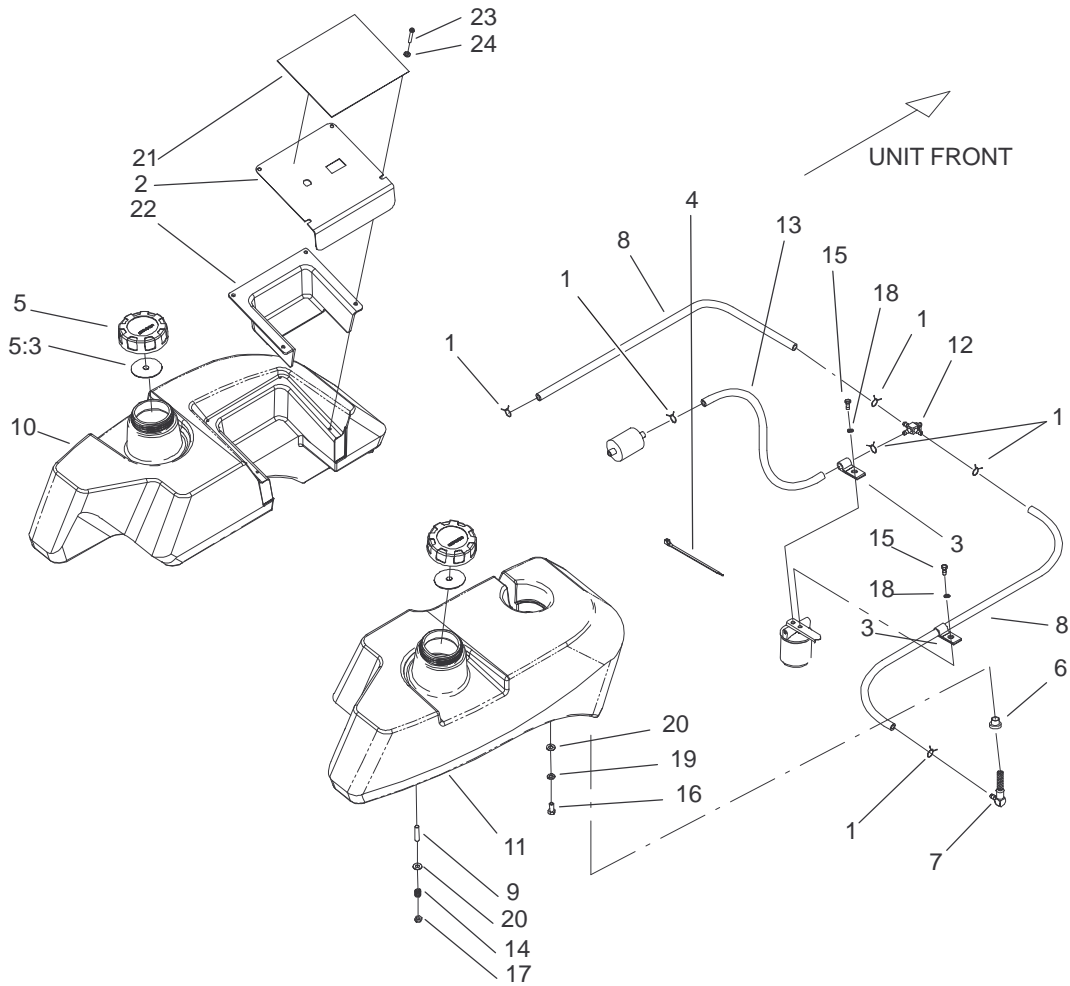
Sheet No.:7

Hydraulic System Assembly

Ref. No.	Part No.	Qty.	Description	Ref. No.	Part No.	Qty.	Description
45	13-2840	1	Key-Square				
46	1-807272	2	Key-Machine				
47	3290-357	8	Nut-Flange, Lock				
48	32128-33	2	Nut-HF				
51	1-603841	2	Pump-Hydraulic, RH				
*51	80-6130	1	Kit-Seal, Overhaul				

PROTOTYPE

* Not illustrated

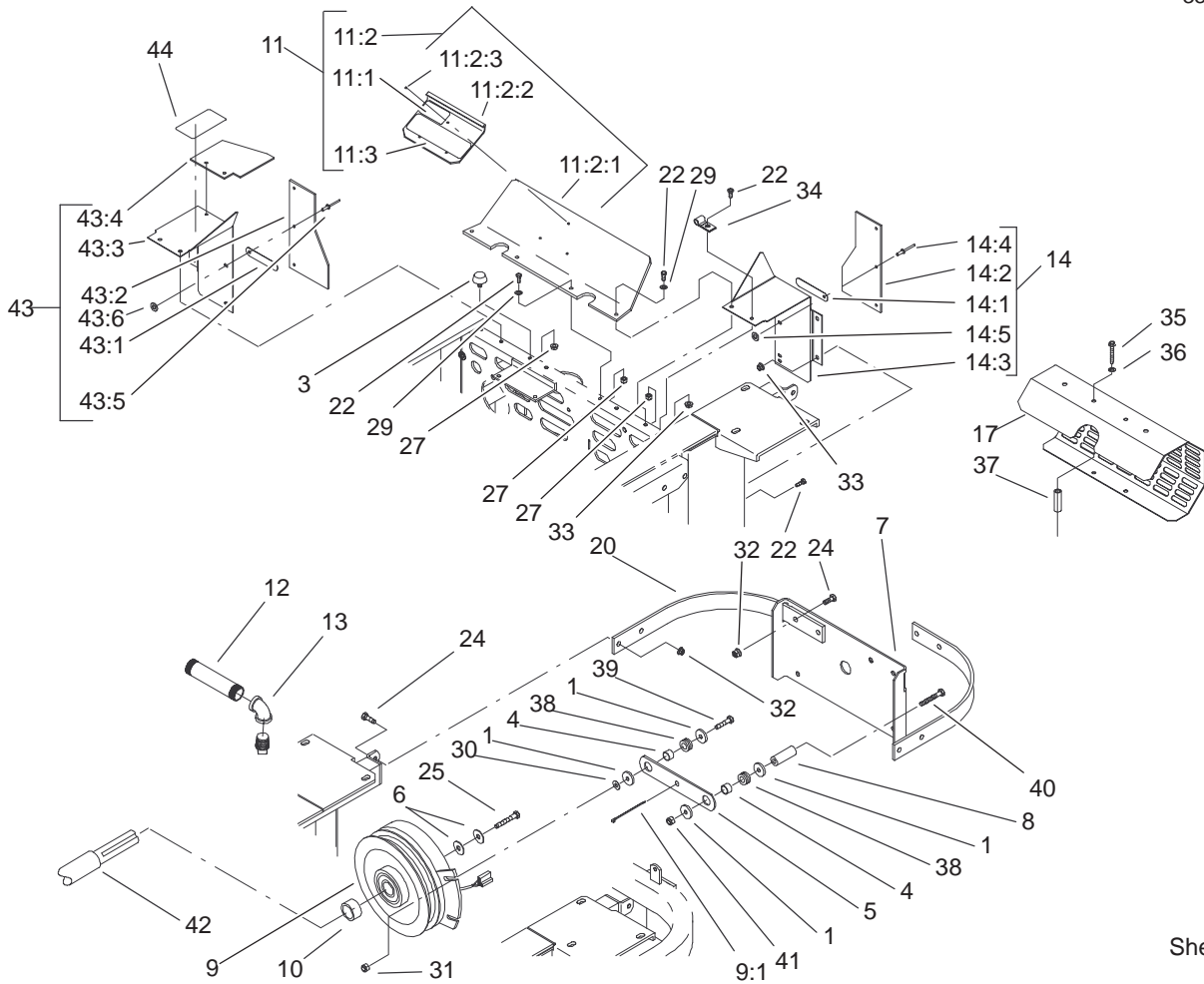


Sheet No.:8
C-2975

Tank and Fuel Line Assembly

Ref. No.	Part No.	Qty.	Description
1	1-303077	6	Clamp-Line, Fuel
2	99-4656-03	1	Panel-Control
3	1-513762	2	Clip-Loom
4	1-303335	1	Tie-Plastic
5	88-3980	2	Gas Cap ASM
5:3	88-4010	1	Gasket-Cap, Gas
6	1-513645	2	Bushing-Valve, Fuel
7	1-543277	2	Elbow-Tank, Fuel
8	1-543456	2	Hose-Fuel
9	1-633023	6	Stud
10	104-5100	1	Tank-Fuel, LH
11	104-5101	1	Tank-Fuel, RH
12	1-633347	1	Valve-Fuel
13	103-0216	1	Hose-Fuel
14	1-633349	6	Spring-Tank, Fuel
15	321-3	2	Screw-HH
16	322-3	2	Screw-HH
17	3296-47	6	Nut-Lock, NI
18	3253-3	2	Washer-Lock
19	3253-4	2	Washer-Lock
20	3256-23	8	Washer-Flat
21	99-4632	1	Decal-Panel, Control
22	99-4940	1	Shield-Panel, Control
23	1-803071	4	Screw
24	1-303435	4	Washer-Spring

Ref. No.	Part No.	Qty.	Description
PROTOTYPE			

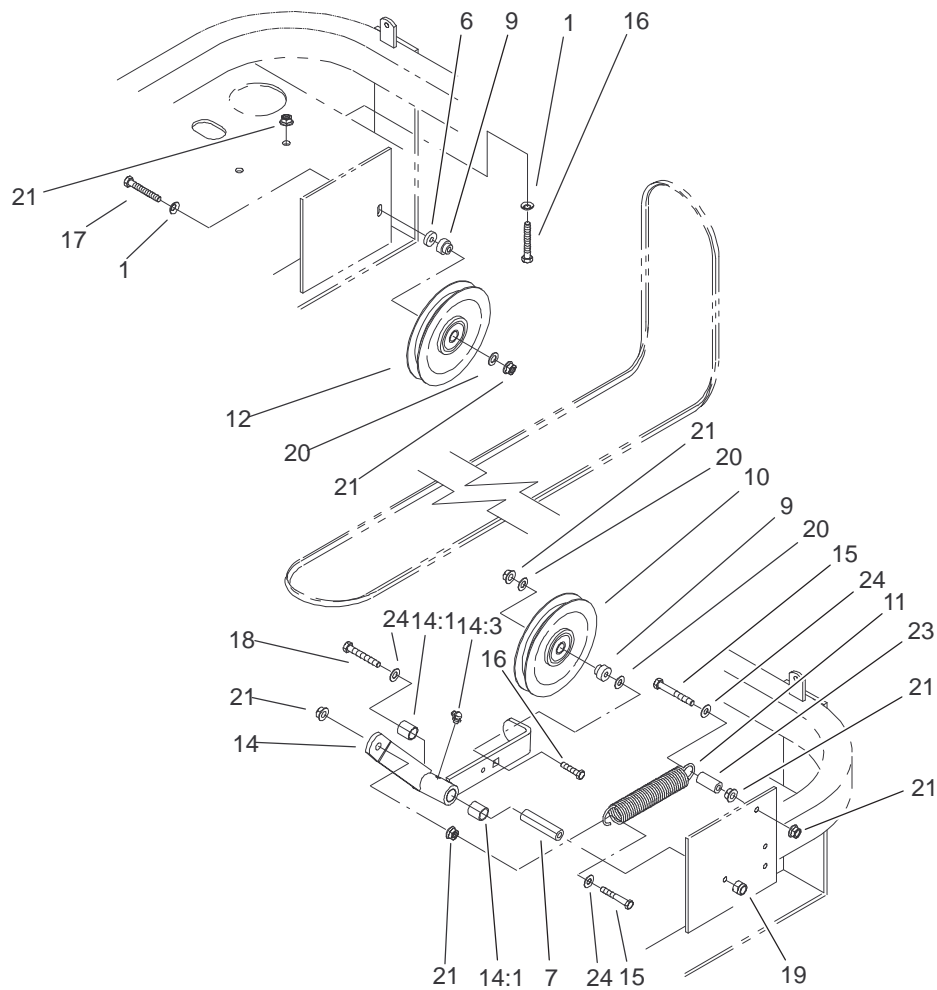


Sheet No.:9
C-2976

Shield and Clutch Assembly

Ref. No.	Part No.	Qty.	Description
1	1-613235	4	Washer
3	1-523420	2	Bumper
4	1-633545	2	Spacer-Grommet
5	1-633543-03	1	Strap-Clutch, Brake
6	1-603610	2	Washer-Spring
7	1-633615-03	1	Guard-Clutch
8	1-633988	1	Spacer-Anchor, Clutch
9	103-0665	1	Clutch ASM
9:1	1-303335	1	Tie-Plastic
10	1-633179	1	Spacer-Clutch, 25hp
11	1-644276	1	Shield ASM
11:1	1-633462	1	Decal-Important
11:2	1-634308	1	Shield/Lift ASM
11:2:1	1-633298	1	Shield-Engine
11:2:2	1-633300-03	1	Lift-Shield
11:2:3	1-803035	3	Rivet-Pop
11:3	103-0368	1	Decal-Devices, Rotating
12	1-543232	1	Nipple
13	1-303428	1	Elbow-90°
14	1-634796	1	LH Shield ASM
14:1	1-523285	1	Clip-Baffle, Rear
14:2	1-633301	1	Shield-Engine
14:3	1-633795-03	1	Baffle-Engine Shield, LH

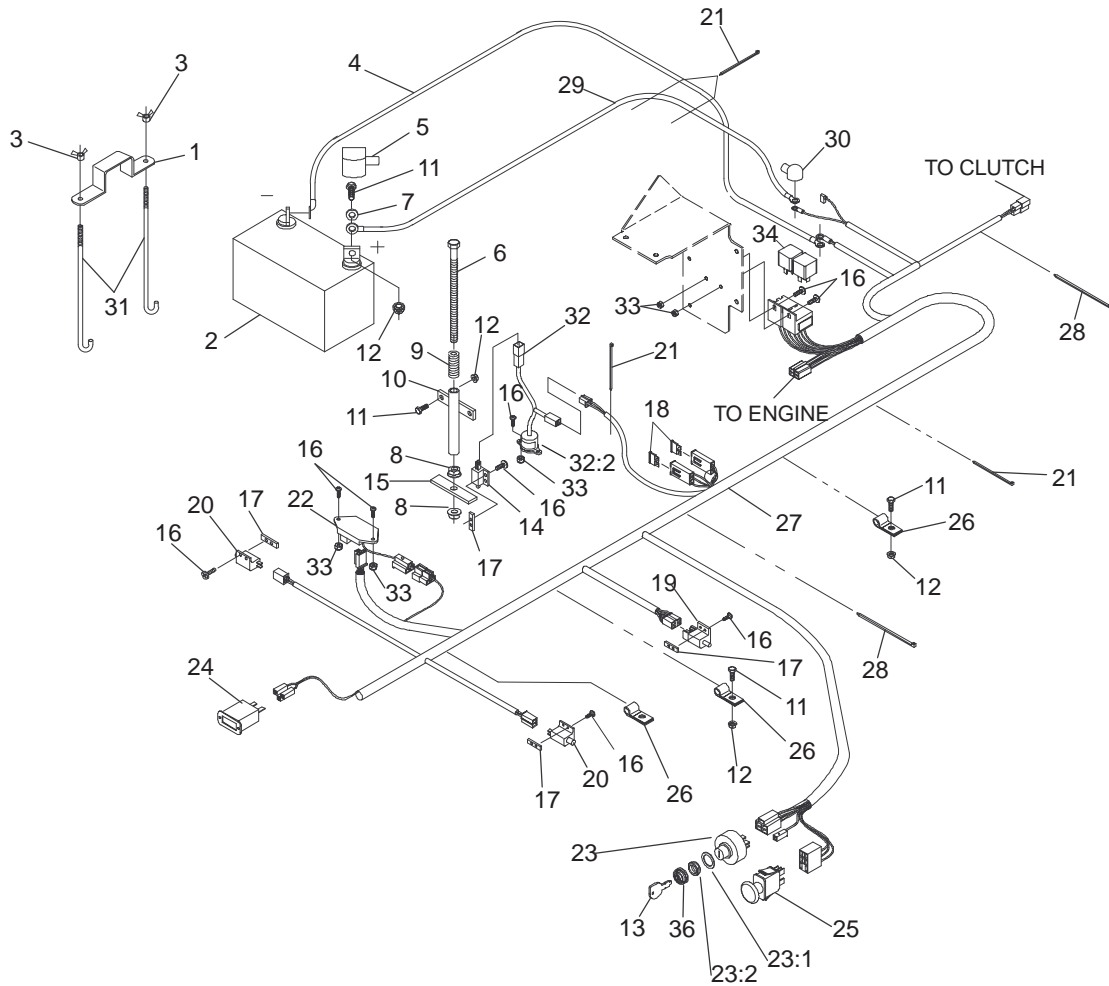
Ref. No.	Part No.	Qty.	Description
14:4	1-803035	3	Rivet-Pop
14:5	3256-63	3	Washer-Flat
17	1-643313-03	1	Guard-Muffler
20	1-643264-03	2	Bracket-Guard, Top
22	321-4	10	Screw-HH
24	323-6	6	Screw-HH
25	3212-10	1	Screw-HH
27	3296-42	6	Nut-Lock NI
29	3256-2	4	Washer-Flat
30	3256-3	1	Washer-Flat
31	32128-20	1	Nut-HF
32	3290-357	4	Nut-Flange, Lock
33	32128-33	5	Nut-HF
34	1-633396	1	Clip-Loom
35	1-809076	2	Screw
36	1-323235	2	Washer-Spring
37	1-323236	2	Spacer
38	1-633630	2	Grommet-Brake
39	322-6	1	Screw-HH
40	322-19	1	Screw-HH
41	3296-29	1	Nut-Lock
42	1-633830	1	Engine-25hp, Kohler (Ch25s Ps-68606)
43	1-644316	1	RH Shield ASM
43:1	1-523285	1	Clip-Baffle, Rear
43:2	1-633301	1	Shield-Engine



Sheet No.:10

Idler Assembly

Ref. No.	Part No.	Qty.	Description	Ref. No.	Part No.	Qty.	Description
1	98-5975	5	Washer-Belleville				
6	1-603050	1	Spacer				
7	1-603384	1	Bushing-Pivot, Idler				
9	1-603496	2	Bushing-Idler				
10	99-4638	1	Idler				
11	1-603402	1	Spring-Extension				
12	1-633166	1	V-Belt-Idler				
14	99-4677	1	Idler Arm ASM				
14:1	1-513034	2	Sleeve-Bearing				
14:3	302-40	1	Fitting-Grease				
15	323-11	2	Screw-HH				
16	323-9	5	Screw-HH				
17	323-13	1	Screw-HH				
18	1-800805	1	Screw-HH				
19	3296-39	1	Nut-Lock, NI				
20	3256-24	3	Washer-Flat				
21	3290-357	10	Nut-Flange, Lock				
23	1-603401	1	Spacer-Fender				
24	3256-4	3	Washer-Flat				

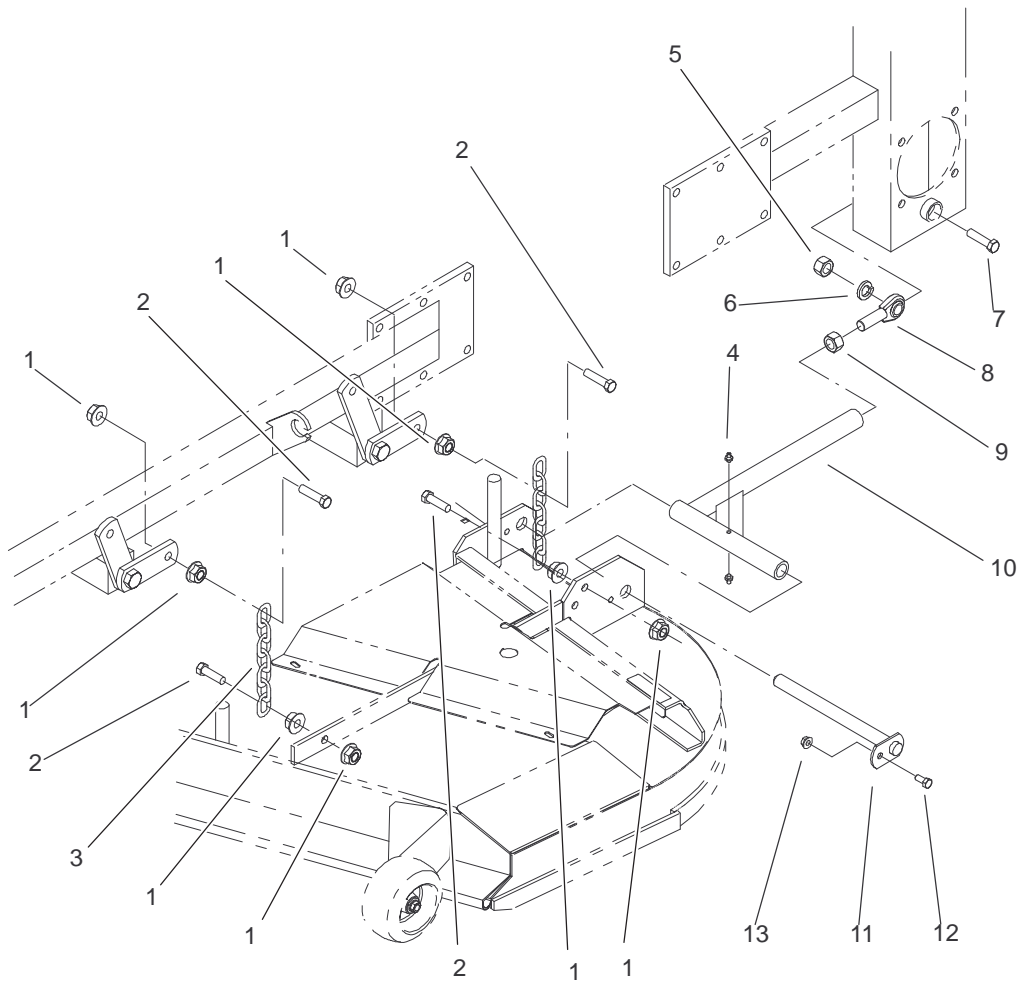


Sheet No.:11

Electrical System Assembly

Ref. No.	Part No.	Qty.	Description
1	1-633652-03	1	Strap-Holddown, Battery
2	1-603479	1	Battery
3	1-543792	2	Wingnut
4	1-633307	1	Wire-Ground
5	1-543391	1	Insulator-Battery
6	1-800282	1	Screw-HH
7	3256-2	2	Washer-Flat
8	32128-20	2	Nut-HF
9	1-523415	1	Spring-Switch, Seat
10	1-522424-03	1	Mount-Spring, Seat
11	321-4	6	Screw-HH
12	32128-33	6	Nut-HF
13	63-8360	2	Key-Ignition
14	1-513152	1	Switch-Closed, Normally
15	1-513180	1	Plate-Switch, Seat
16	3290-500	14	Screw-PPH
17	1-633181	4	Plate-Tapped
18	1-816001	2	Fuse-Type, Blade
19	1-633111	1	Switch
20	1-513051	2	Switch-Open, Normally
21	1-303287	5	Tie-Plastic
22	100-6186	1	Module-Delay, Seat
23	88-9830	1	Switch-Ignition

Ref. No.	Part No.	Qty.	Description
23:1	3254-5	1	Washer-Lock, Internal
23:2	218-461	1	Nut-HH
24	1-513374	1	Meter-Hours
25	1-633673	1	Switch-Delta
26	1-633396	3	Clip-Loom
27	100-4340	1	Harness-Wire
28	1-303335	2	Tie-Plastic
29	1-523281	1	Wire-Starter
30	1-543393	1	Insulator-Solenoid
31	1-633651	2	Bolt-Holddown
32	1-644427	1	Tilt Switch ASM
32:2	1-643401	1	Decal-Switch, Mercury
33	3296-2	6	Nut-Lock
34	1-643275	2	Relay
36	103-0499	1	Seal-Switch, Ignition

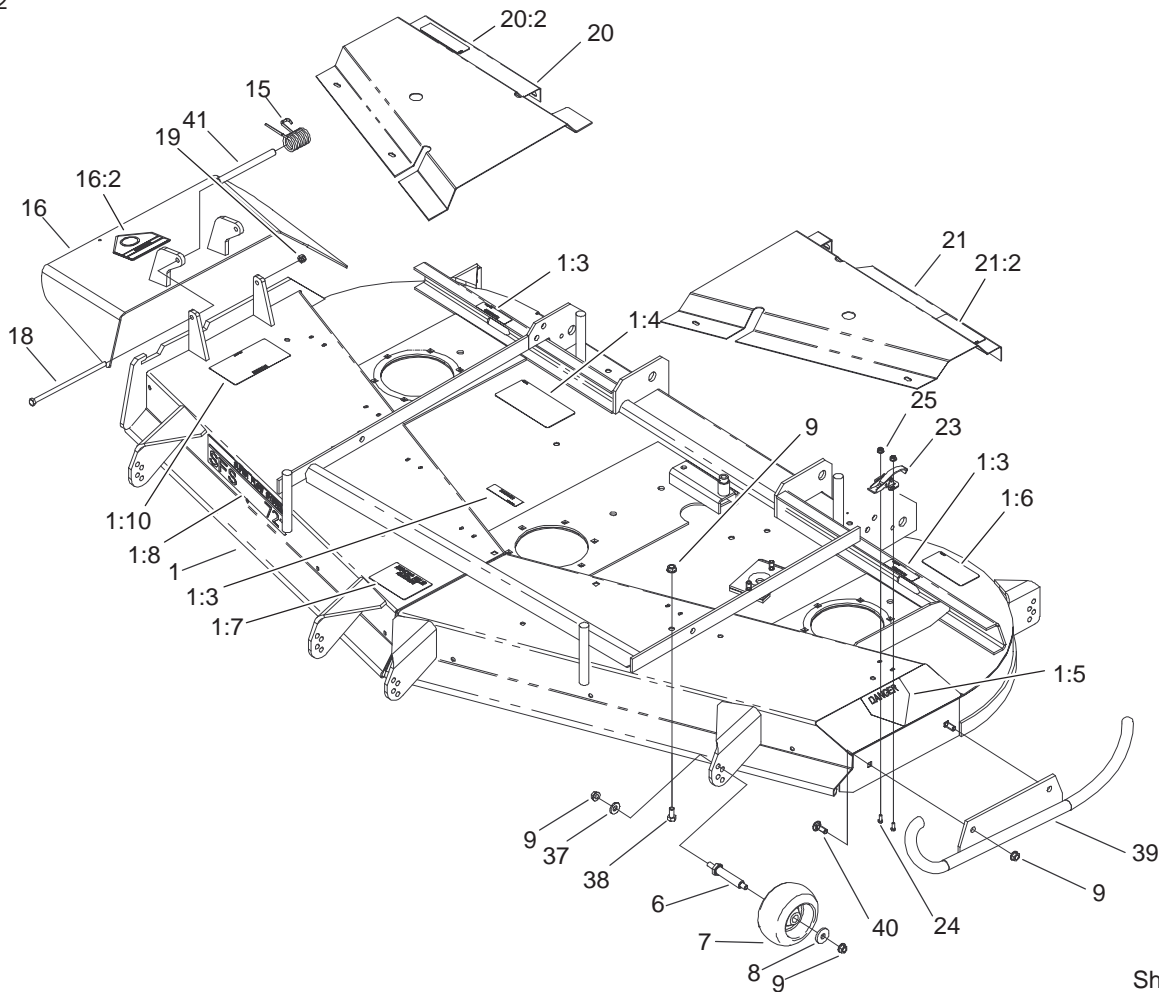


Sheet No.:12

Frame and Deck Assembly

Ref. No.	Part No.	Qty.	Description
1	32128-37	16	Nut-HF
2	324-6	8	Screw-HH
3	1-633447	4	Chain-Lift, Deck
4	302-19	4	Fitting-Grease
5	3217-11	2	Nut-Hex
6	3253-8	2	Washer-Lock
7	327-11	2	Screw-HH
8	1-633029	2	Balljoint-Spherical
9	3219-6	2	Nut-Hex
10	103-1072-01	2	Strut-Deck
11	1-632199-01	2	Pin-Strut, Deck
12	322-3	2	Screw-HH
13	3296-29	2	Nut-Lock

Ref. No.	Part No.	Qty.	Description
PROTOTYPE			



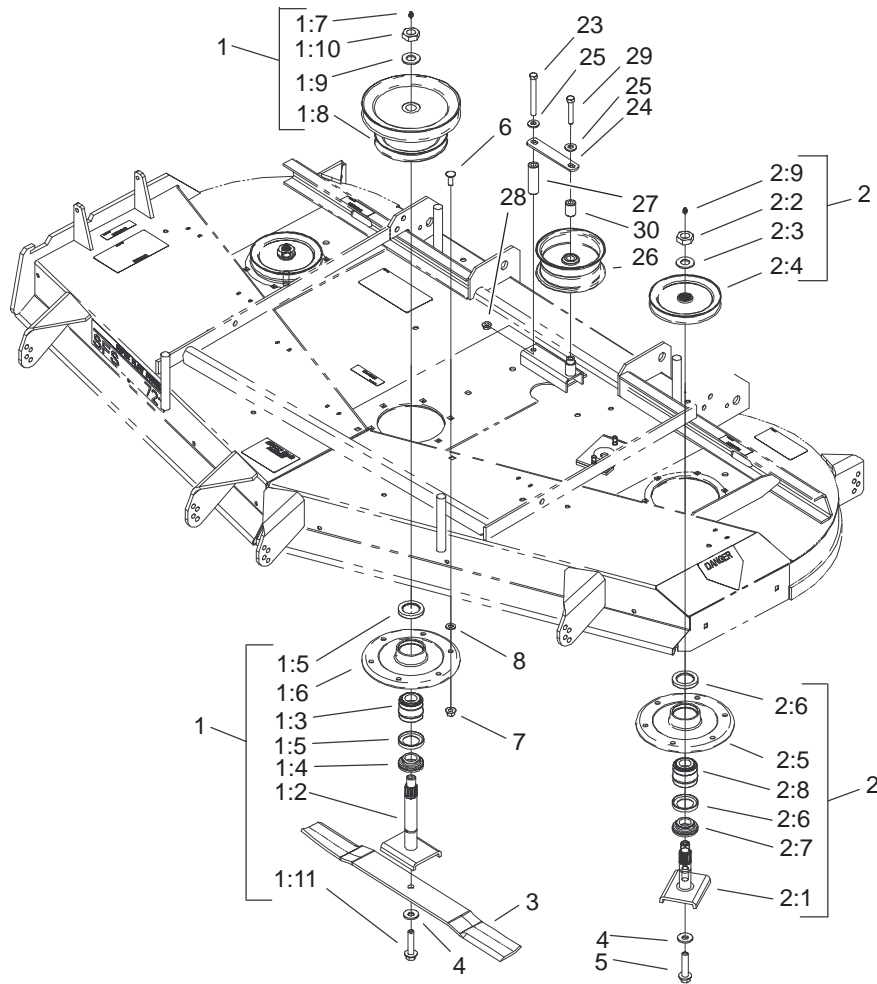
Sheet No.:42

Deck, Deflector and Roller Assembly

Ref. No.	Part No.	Qty.	Description
1	104-7772	1	Deck ASM
1:3	98-5954	3	Decal-Missing, Cover
1:4	99-4686	1	Decal-Routing, Belt
1:5	43-8480	1	Decal-Danger
1:6	93-7818	1	Decal-Torque, Blade
1:7	98-3798	1	Decal-Wheel, Gage
1:8	98-5995	1	Decal-Deck
1:10	66-1340	1	Decal-Danger
6	99-2842	6	Spacer-Wheel
7	68-2730	6	Gage-Wheel
8	1-373034	6	Washer-Swivel
9	3290-357	18	Nut-Flange, Lock
15	104-8554	1	Spring-Torsion
16	104-7763	1	Deflector ASM
16:2	54-9220	1	Decal-Danger
18	322-50	1	Screw-Cap
19	3296-29	1	Nut-Lock
20	100-6527	1	RH Cover w/Decal ASM
20:2	67-5360	1	Decal-Danger
21	99-2623	1	LH Cover w/Decal ASM
21:2	67-5360	1	Decal-Danger
23	249-21	4	Clamp-Slotted
24	3290-321	8	Screw-HWH
25	32128-17	8	Nut-Lock, Flange

Ref. No.	Part No.	Qty.	Description
37	98-5975	6	Washer-Belleville
38	323-4	4	Screw-HH
39	98-7923-01	1	Skid
40	3231-22	2	Screw-CARR
41	104-8555	1	Spacer-Deflector, Mounting

PROTOTYPE

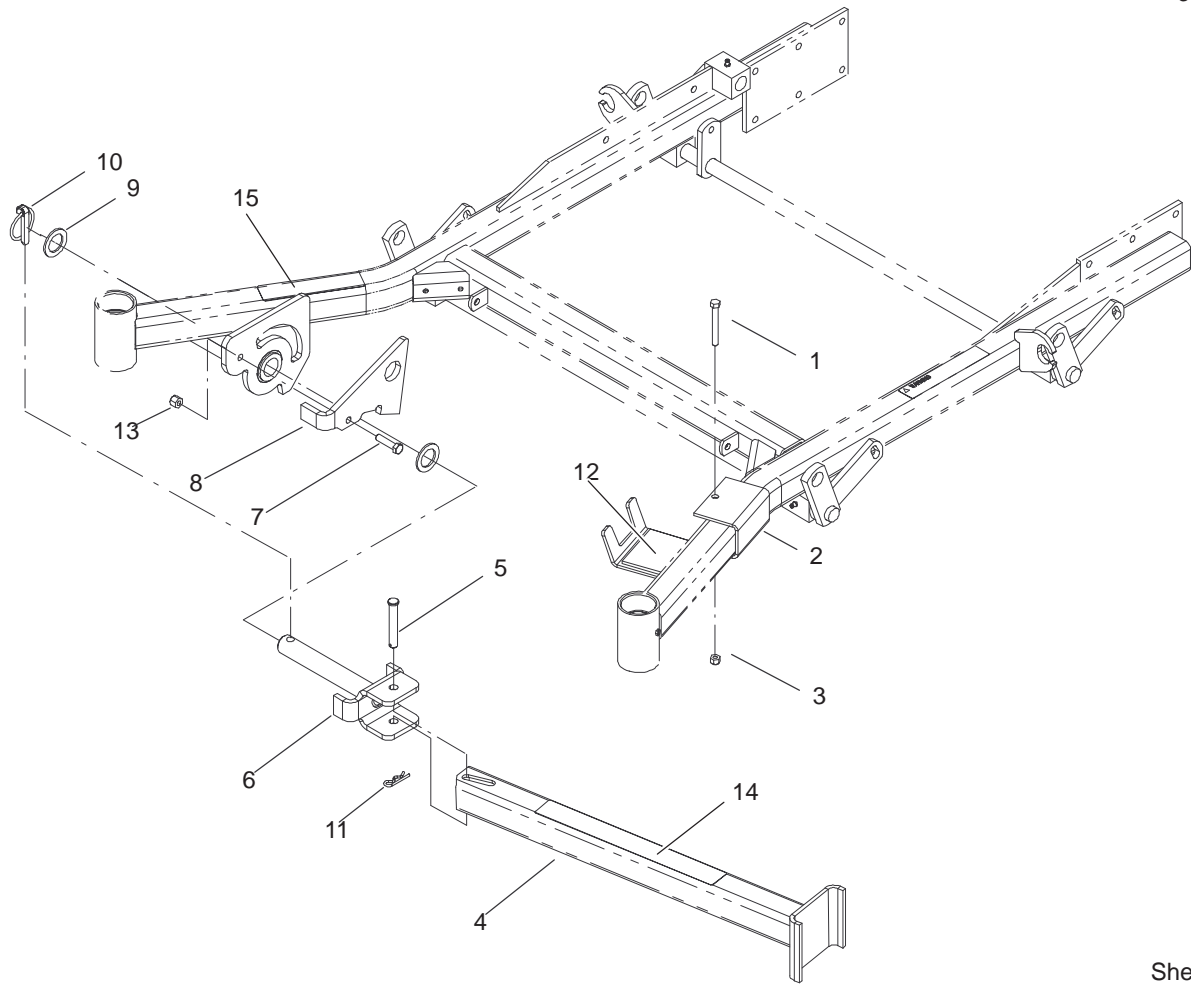


Sheet No.:43

Spindle and Pulley Assembly

Ref. No.	Part No.	Qty.	Description
1	99-2605	1	Middle Spindle ASM
1:2	51-3551	1	Shaft-Spindle
1:3	46-8530	1	Bearing ASM
1:4	27-0950	1	Spacer-Bearing, Spindle
1:5	253-139	2	Seal-Oil
1:6	61-4160	1	Housing-Spindle
1:7	302-2	1	Fitting-Grease
1:8	99-4626	1	Pulley Hub ASM
1:9	92-5836	1	Washer-Axle
1:10	32146-20	1	Nut-Jam
1:11	92-5816	1	Bolt-Blade
2	99-4642	2	Outer Spindle ASM
2:1	27-0920	1	Shaft-Spindle
2:2	32146-20	1	Nut-Jam
2:3	7-4150	1	Washer-Pinion
2:4	99-4615	1	Pulley & Hub
2:5	61-4160	1	Housing-Spindle
2:6	253-139	1	Seal-Oil
2:7	27-0950	1	Spacer-Bearing, Spindle
2:8	46-8530	1	Bearing ASM
2:9	302-2	1	Fitting-Grease
3	94-1861	3	Blade
4	1-513435	3	Washer-Spring
5	92-5816	2	Bolt-Blade

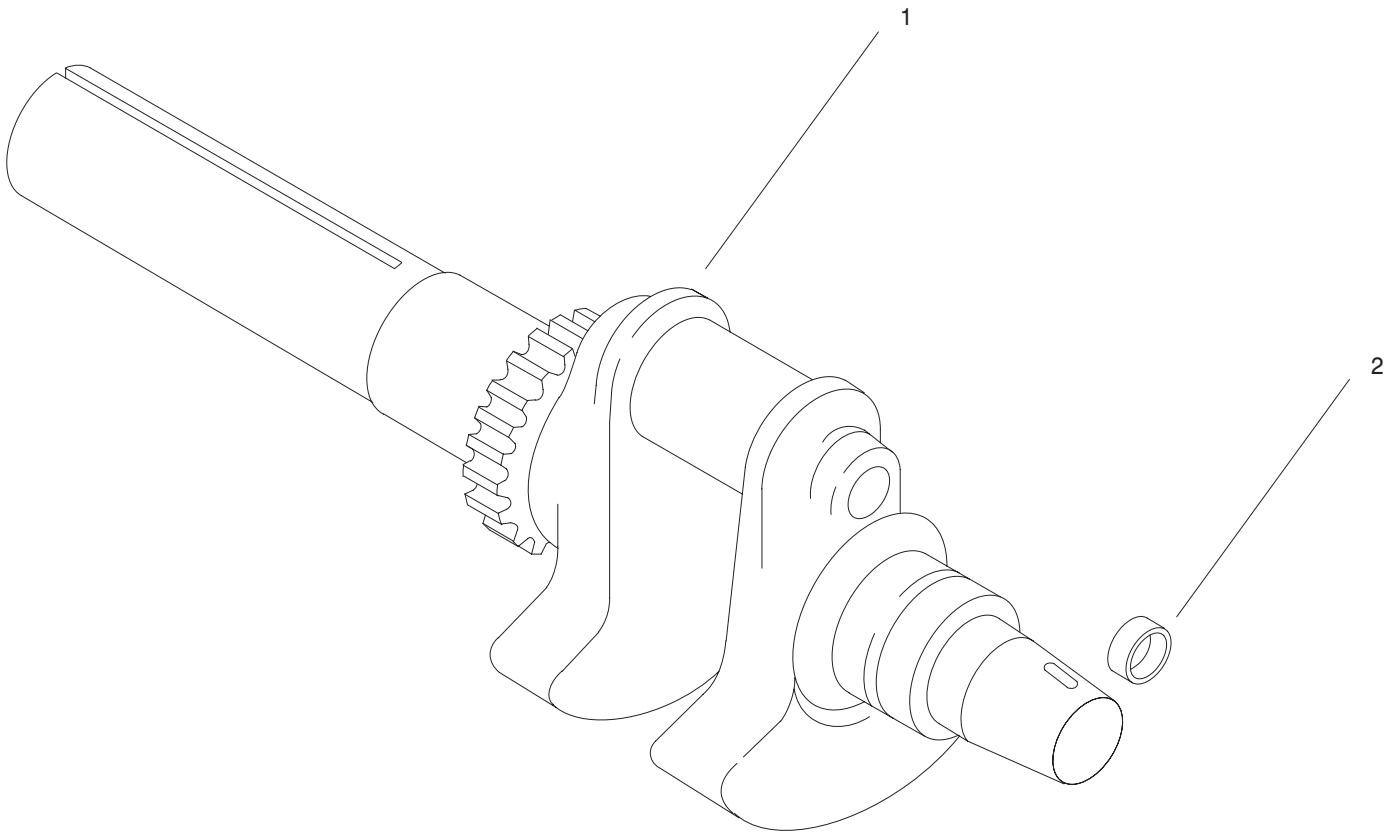
Ref. No.	Part No.	Qty.	Description
6	3231-22	18	Screw-CARR
7	32128-21	18	Nut-HF
8	3256-24	4	Washer-Flat
23	323-42	1	Screw-HH
24	1-653189	1	Plate-Guide, Belt
25	98-5975	2	Washer-Belleville
26	1-413099	1	Pulley-Idler
27	99-4659	1	Spacer-Bracket
28	3290-357	1	Nut-Flange, Lock
29	323-11	1	Screw-HH
30	1-653190	1	Spacer



Sheet No.:51

Stand Assembly

Ref. No.	Part No.	Qty.	Description	Ref. No.	Part No.	Qty.	Description
1	322-13	1	Screw-HH				
2	100-9699-01	1	Bracket-Cradle				
3	3296-29	1	Nut-Lock				
4	100-9695-01	1	Leg ASM				
5	283-55	1	Pin-Clevis				
6	100-9692-01	1	Pivot Pin ASM				
7	323-8	1	Screw-HH				
8	100-9686-01	1	Bracket-Latch				
9	3-6781	2	Washer-Thrust				
10	283-71	1	Pin-Lynch				
11	3290-355	1	Pin-Hair				
12	104-7765	1	Cushion-Rubber				
13	3296-39	1	Nut-Lock, NI				
14	104-7758	1	Decal-Z Stand				
15	104-7759	1	Decal-warning				



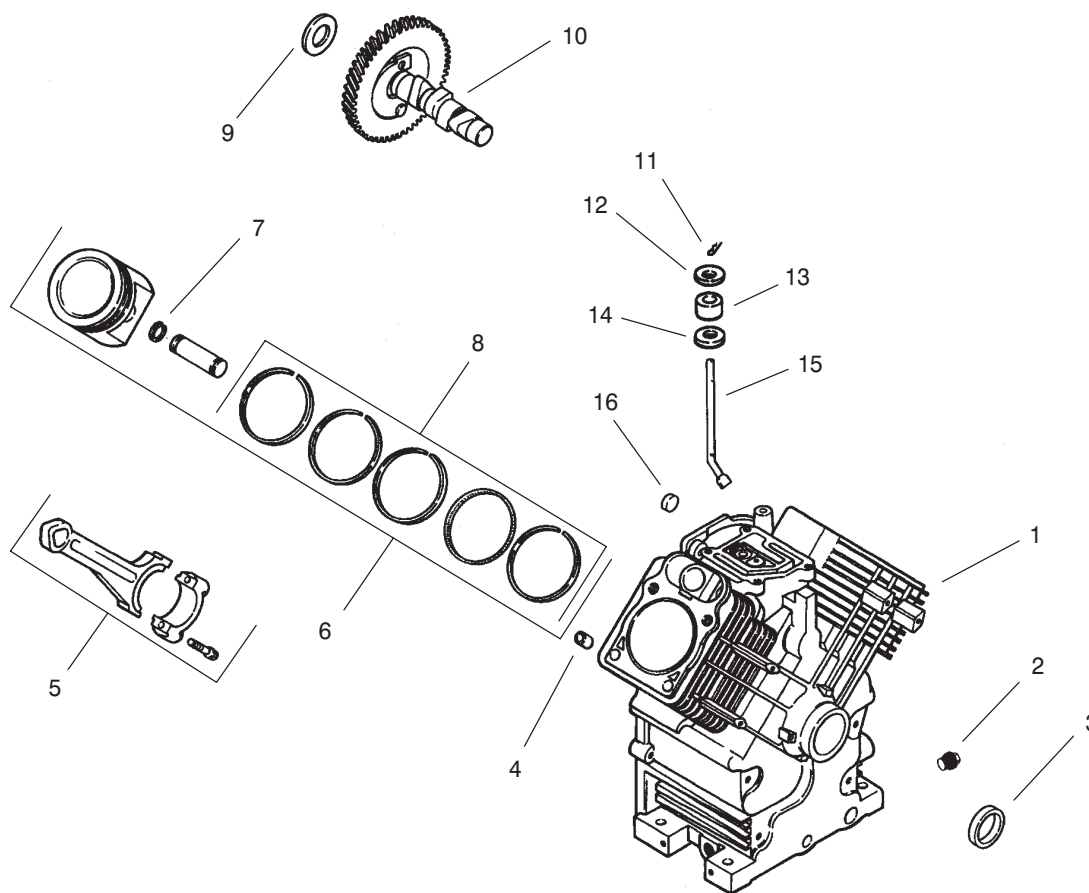
Crankshaft Assembly (Engine: Kohler CH25S PS-68606)

Ref. No.	Part No.	Qty.	Description
1	24 014 06	1	Crankshaft (Incl. Ref.# 2)
2	52 139 09	1	Plug-Cup

Ref. No.	Part No.	Qty.	Description

PROTOTYPE

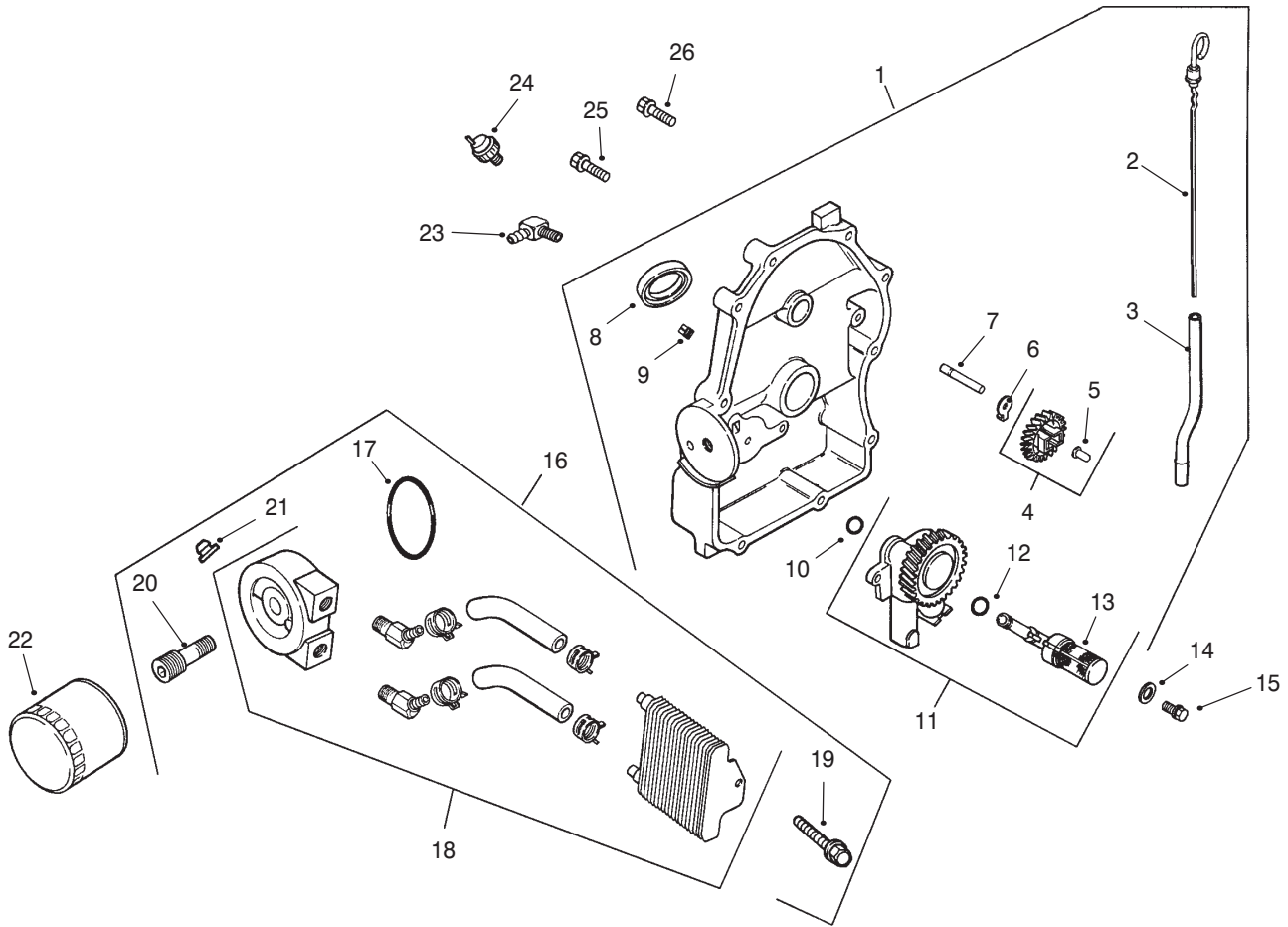
Obtain parts from Kohler



Crankcase Assembly (Engine: Kohler CH25S PS-68606)

Ref. No.	Part No.	Qty.	Description	Ref. No.	Part No.	Qty.	Description
1	24 561 33	1	Cylinder Block (Incl. Ref.# 2,4,16,17)	14	X-25-102	1	Washer-Plain
2	X-75-10	2	Plug-Drain	15	24 144 01	1	Shaft-Cross, Governor
3	24 032 01	1	Seal-Oil, Front	16	52 139 09	1	Plug-Cup
4	12 380 17	6	Pin-Dowel, Locating	*	24 113 56	1	Decal-Service
5	24 067 13	2	Connecting Rod (Std.)				
	24 067 14	2	Connecting Rod (.25)				
6	24 874 06	2	Piston with Ring Set (Std.)				
7	24 018 01	4	Retainer-Pin, Piston				
8	24 108 04	2	Ring Set (Std.)				
9	12 422 09	A/R	Shim-Camshaft-Red				
	12 422 13	A/R	Shim-Camshaft-Black				
	12 422 07	A/R	Shim-Camshaft-White				
	12 422 08	A/R	Shim-Camshaft-Blue				
	12 422 10	A/R	Shim-Camshaft- Yellow				
	12 422 11	A/R	Shim-Camshaft-Green				
	12 422 12	A/R	Shim-Camshaft-Gray				
10	24 012 10	1	Camshaft				
11	12 380 04	1	Pin-Hitch				
12	M-0631005	1	Washer-Flat				
13	12 032 01	1	Seal-cross shaft, Governor				

*Not Illustrated
Obtain parts from Kohler

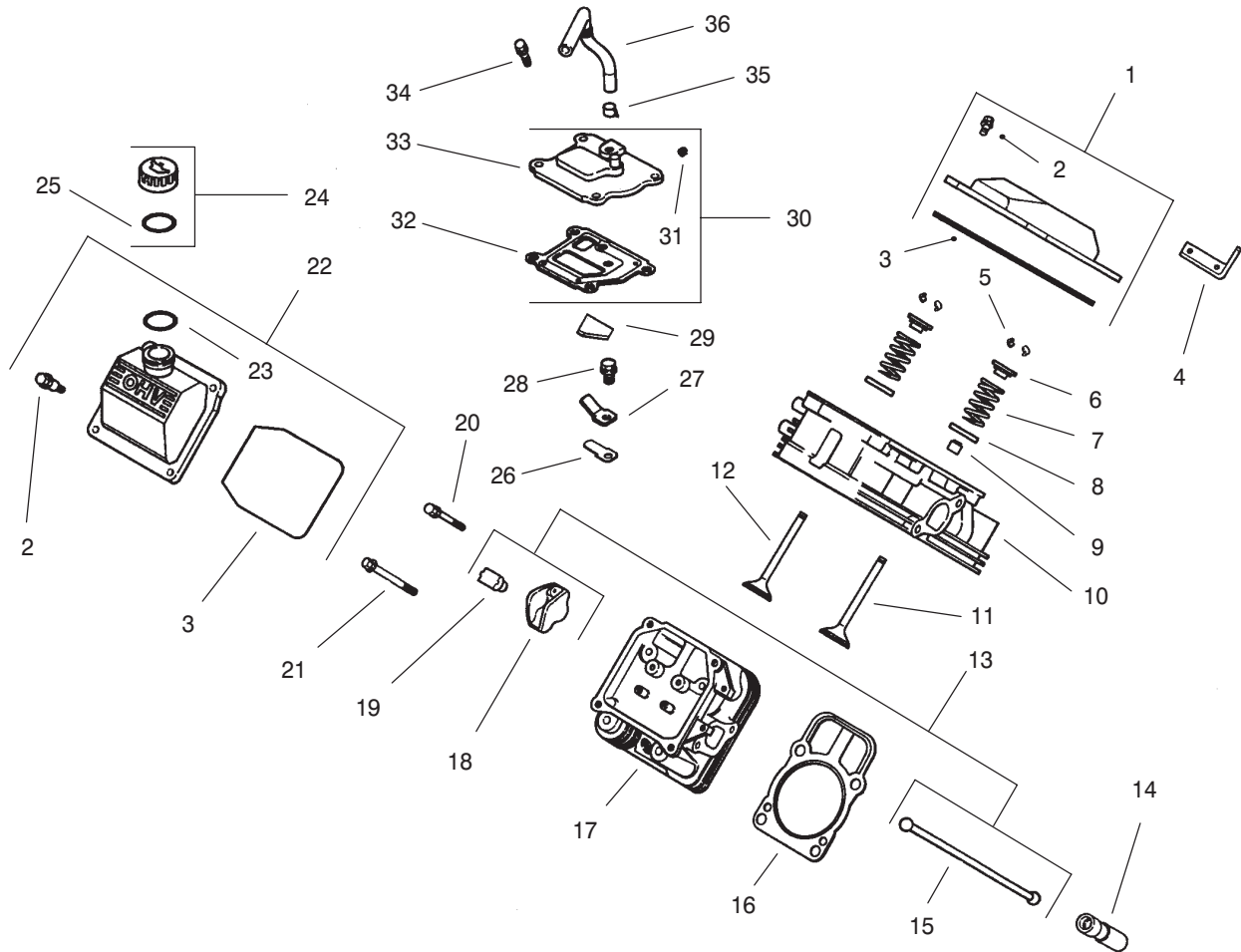


Oil Pan/Lubrication Assembly (Engine: Kohler CH25S PS-68606)

Ref. No.	Part No.	Qty.	Description
1	24 009 83	1	Closure Plate ASM (Incl. Ref.# 2-12)
2	24 038 06	1	Dipstick
3	24 123 08	1	Tube-Dipstick
4	24 043 12	1	Kit-Gear, Governor (Incl. Ref.# 5)
5	12 380 01	1	Pin-Regulating, Governor
6	52 448 02	1	Tab-Locking
7	12 144 02	1	Shaft-Gear, Governor
8	52 032 08	1	Seal-Oil (PTO end)
9	X-75-23	2	Plug-Pipe, 1/8"
10	24 153 08	1	O-Ring
11	24 393 10	1	Oil Pump ASM (Incl. Ref.# 12,13)
12	24 153 01	1	O-Ring-pick-up, Oil
13	24 381 04	1	Pick-up-Oil
14	M-0631005	2	Washer-Plain, 6mm
15	M-0645025	2	Screw-HF
16	54 755 14	1	Kit-Cooler, Oil (Incl. Ref.# 17-21)
17	24 253 17	1	O-Ring
18	24 594 15	1	Cooler-Oil
19	24 086 12	2	Screw-Hex

Ref. No.	Part No.	Qty.	Description
20	24 136 05	1	Nipple-Filter, Oil
21	24 100 01	2	Nut-Plastic
22	52 050 02	1	Filter-Oil
23	25 155 02	1	Connector
24	24 099 03	1	Switch-Pressure
25	24 086 16	9	Screw-HF
26	24 086 17	1	Screw-HF
*	24 113 25	1	Decal-Cooler, Oil

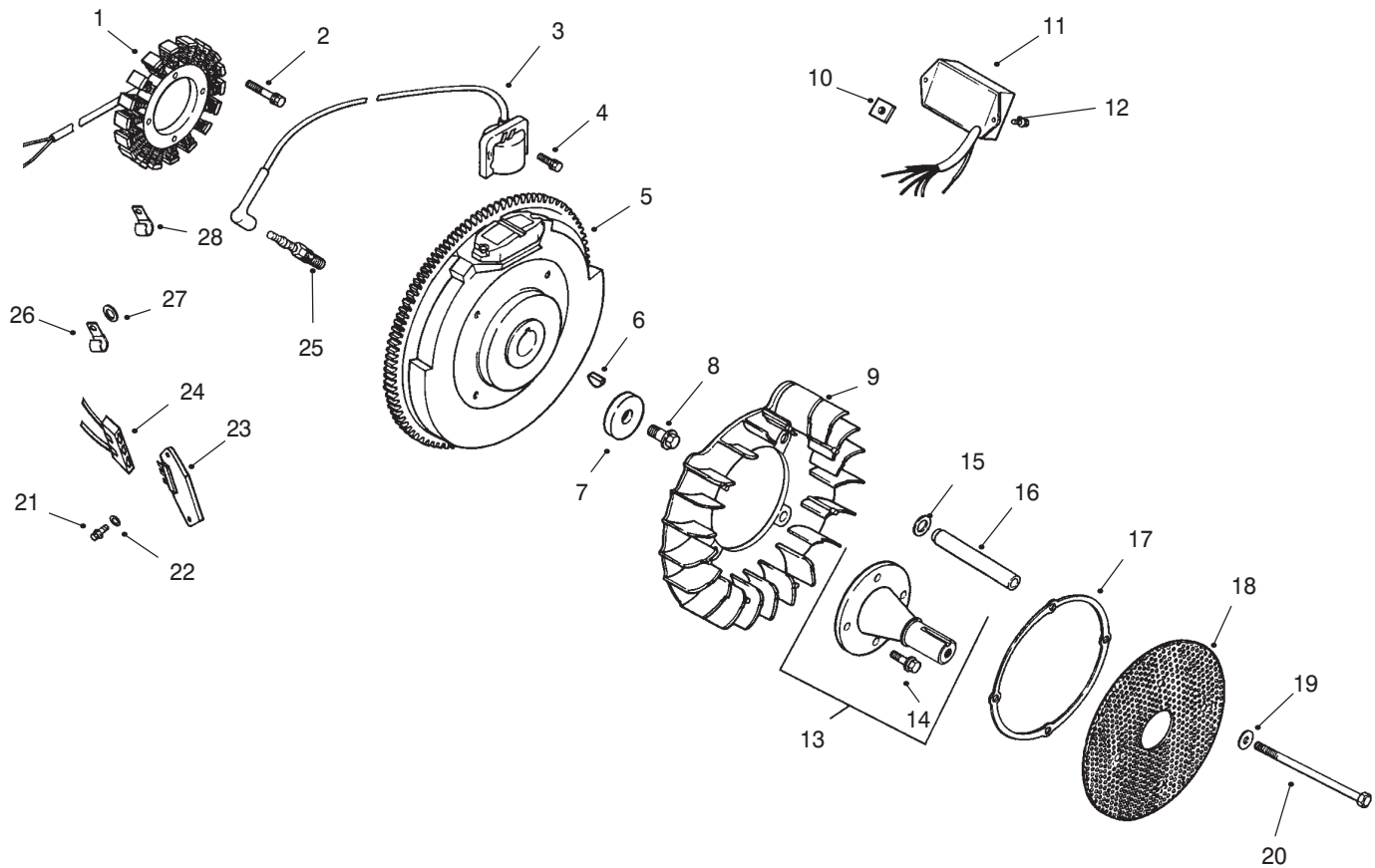
*Not Illustrated
Obtain parts from Kohler



Head/Valve/Breather Assembly (Engine: Kohler CH25S PS-68606)

Ref. No.	Part No.	Qty.	Description	Ref. No.	Part No.	Qty.	Description
1	24 755 74	1	Kit-Valve Cover, Plain (Incl. Ref.# 2, 3)	21	24 086 44	8	Screw-HF
2	24 086 32	4	Screw-Shoulder	22	24 755 75	1	Kit-Valve Cover, Oil Fill (Incl. Ref.# 2, 3, 23)
3	24 153 16	1	O-Ring-Cover, Valve	23	24 153 09	1	O-Ring
4	24 445 01	1	Strap-Lifting	24	24 755 46	1	Kit-Cap, Oil Fill (Incl. Ref.# 25)
5	12 755 03	4	Kit-Retainer	25	12 153 03	1	O-Ring-Cap, Oil Fill
6	12 173 01	4	Cap-Spring, Valve	26	24 402 03	1	Reed-Breather
7	24 089 02	4	Spring-Valve	27	12 018 01	1	Retainer-Reed, Breather
8	235011	4	Retainer-Spring	28	M-0545010	1	Screw-HF
9	24 032 05	2	Seal-Stem, Valve	29	24 050 01	1	Filter-Breather
10	24 318 13	1	#1 Cylinder Head ASM	30	24 033 01	1	Kit-Bbreather (Incl. Ref.# 31-33)
11	24 017 01	2	Valve-Intake (Std.)	31	X-75-23	1	Plug-Pipe, Allen Head
	24 017 02	2	Valve-Intake (.25)	32	24 041 23	1	Gasket-Breather
12	24 016 01	2	Valve-Exhaust (Std.)	33	24 096 02	1	Cover-Breather
	24 016 02	2	Valve-Exhaust (.25)	34	M-0645020	4	Screw-HF
13	24 755 66	1	Kit-Train, Valve (Incl. Ref.# 15,18,19)	35	X-426-9	1	Clamp-Breather
14	12 351 02	4	Lifter-Valve	36	24 326 06	1	Hose-Breather
15	24 411 05	4	Rod-Push				
16	24 041 37	2	Gasket-Head, Cylinder				
17	24 318 14	1	#2 Cylinder Head ASM				
18	25 186 01	4	Arm-Rocker				
19	24 599 01	4	Pivot-Arm, Rocker				
20	M-0640034	4	Screw-HF				

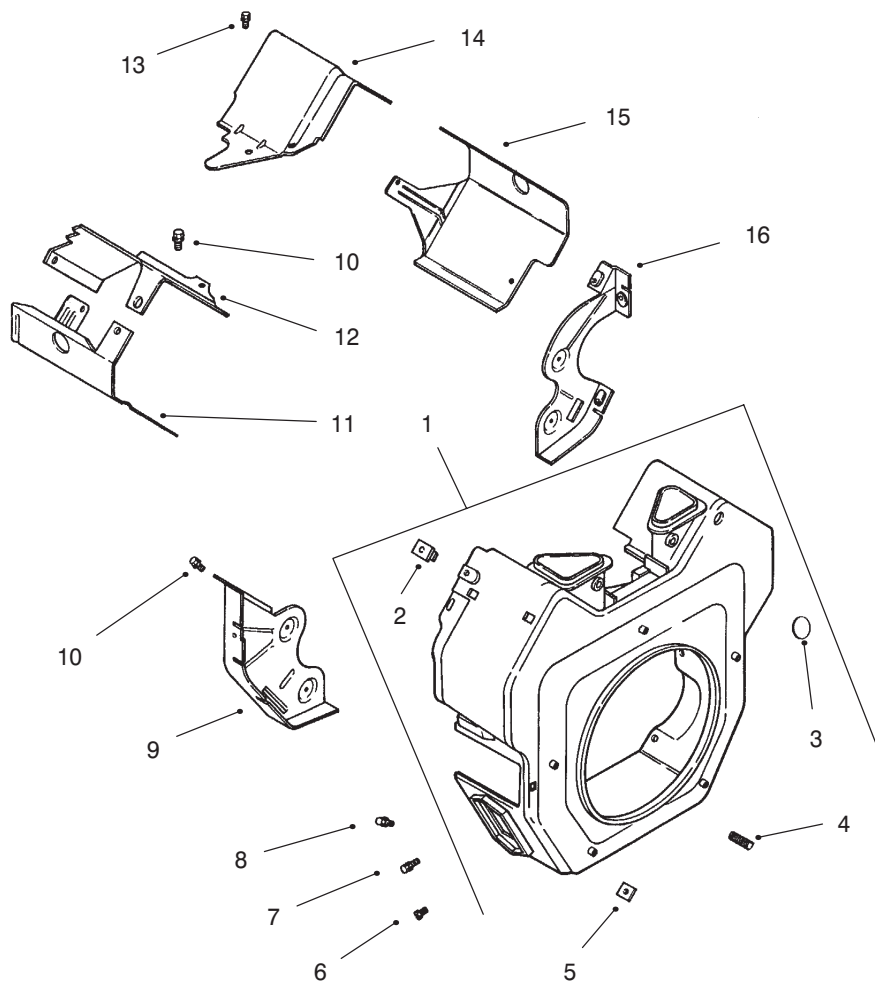
Obtain parts from Kohler



Ignition/Electrical Assembly (Engine: Kohler CH25S PS-68606)

Ref. No.	Part No.	Qty.	Description	Ref. No.	Part No.	Qty.	Description
1	54 755 09	1	Kit-Stator, 15 amp (Incl. Ref.# 24 126 71)	22	X-25-92	2	Washer-Plain, 3/16"
2	M-0548025	2	Screw-Cap, Hex	23	25 403 03	1	Rectifier-Regulator 15amp
3	24 584 11	2	Module-Ignition	24	236602	1	Connector
4	M-0561025	4	Screw-HSH	25	12 132 06	2	Plug-Spark
5	24 025 03	1	Flywheel	26	47 154 01	1	Clip-Cable
6	X-42-15	1	Key	27	X-25-63	1	Washer-Plain, 1/4"
7	12 468 03	1	Washer-Plain, 3/8"	28	48 154 02	1	Clip-Cable
8	12 086 14	1	Screw-HF	*	25 518 28	1	Lead-Black, 4" (18 gauge - insulated grip barrel eyelet terminals)
9	24 157 03	1	Fan				
10	24 100 02	2	Nut-Plastic	*	24 176 38	1	Harness-Wiring
11	24 584 09	1	Module-Advance, Spark	*	24 755 56	1	Kit-Wiring (Includes Terminal #25 542 17 & Tie X-468-1)
12	24 086 41	2	Screw-Head, Phillips				
13	24 755 08	1	Kit-Drive Shaft, Front (Incl. Ref.# 14)	*	24 126 71	1	Bracket-Wire, Stator
14	M-0839025	4	Screw-HF	*	X-22-11	1	Washer-Lock
15	24 468 11	4	Washer-Spring, 10mm				
16	24 112 14	4	Spacer				
17	24 141 06	1	Ring-Support				
18	24 162 22	1	Screen-Grass				
19	X-25-53	4	Washer-Plain, 1/4"				
20	M-0603100	4	Screw-Hex				
21	24 086 18	2	Screw-Head, Phillips				

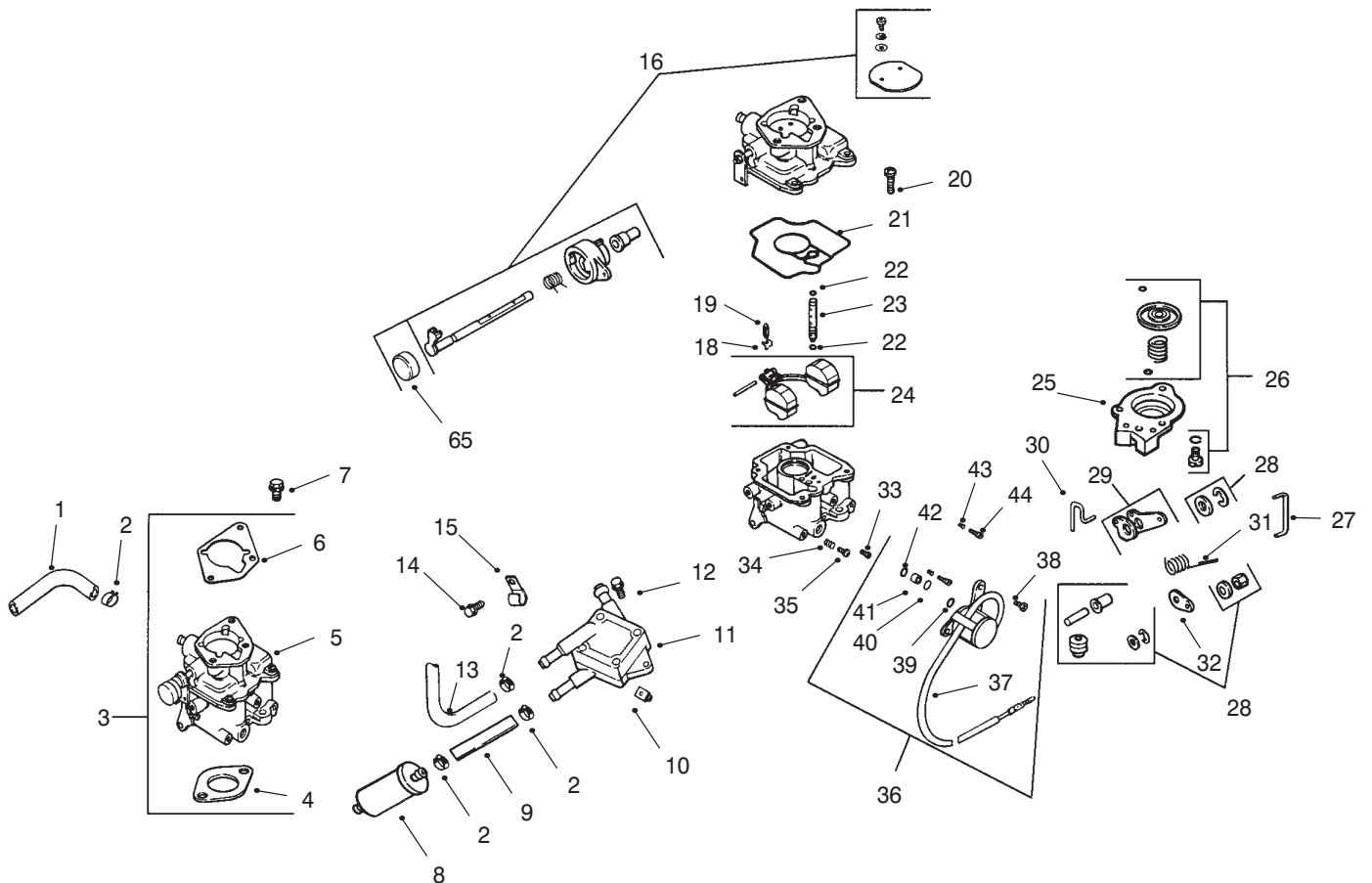
*Not Illustrated
Obtain parts from Kohler



Blower Housing and Baffle (Engine: Kohler CH25S PS-68606)

Ref. No.	Part No.	Qty.	Description	Ref. No.	Part No.	Qty.	Description
1	24 027 40	1	Housing-Blower (Incl. Ref.# 2-5)				
2	24 100 02	2	Nut-Plastic				
3	25 139 16	1	Button-Plug				
4	25 086 43	1	Screw-Set				
5	24 100 01	2	Nut-Plastic				
6	M-0551016	1	Screw-HF				
7	M-0545016	5	Screw-HF				
8	M-0567020	2	Screw-HF				
9	24 146 11	1	Plate-Backing, #2 side				
10	M-0645016	6	Screw-HF				
11	24 063 39	1	Baffle-Cylinder Barrel, #2 side				
12	24 063 17	1	Baffle-Valley, #2 Side				
13	M-0545010	2	Screw-HF				
14	24 063 24	1	Baffle-Valley, #1 Side				
15	24 063 30	1	Baffle-Cylinder Barrel, #1 Side				
16	24 146 08	1	Plate-Backing, #1 Side				
*	24 113 69	1	Decal-HP				

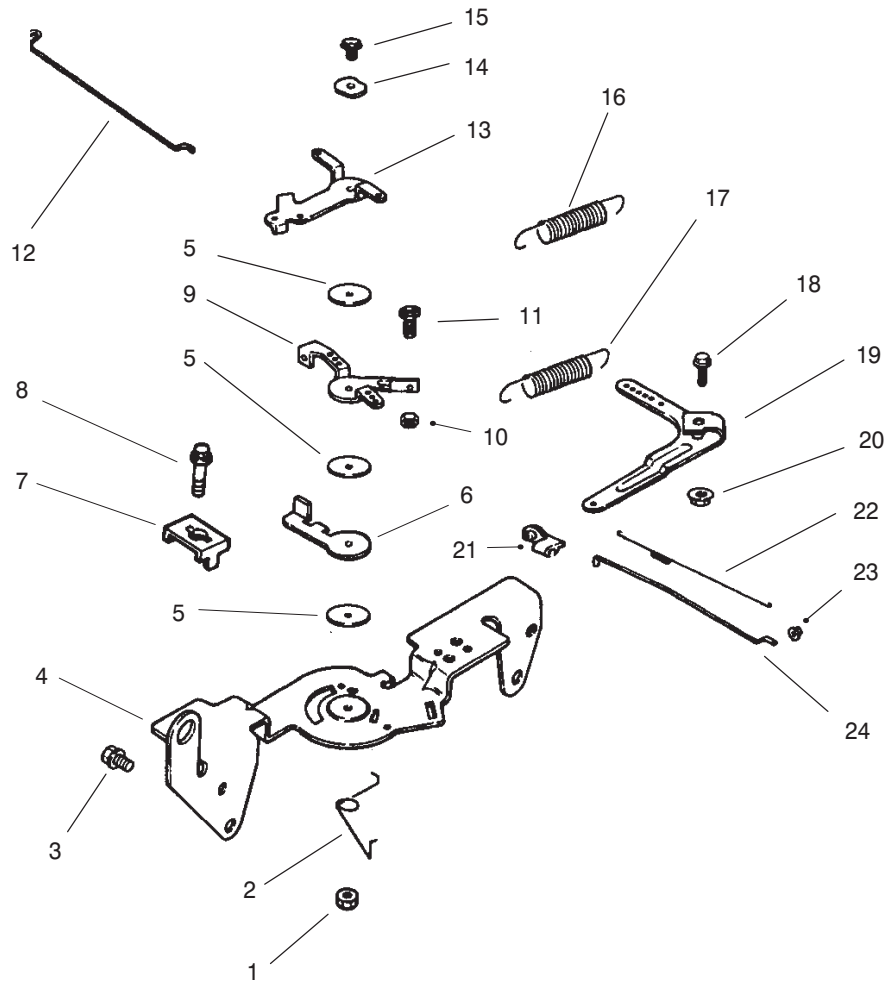
*Not Illustrated
Obtain parts from Kohler



Fuel System Assembly (Engine: Kohler CH25S PS-68606)

Ref. No.	Part No.	Qty.	Description	Ref. No.	Part No.	Qty.	Description
1	25 353 10	2	Line-Fuel, 9"	23	24 337 29	1	Jet-Slow
2	X-426-9	6	Clamp-Hose	24	24 757 02	1	Kit-Repair, Float
3	24 853 34	1	Kit-Carburetor (Incl. Ref.# 4-6)	25	24 081 05	1	Housing-Pump
4	24 041 06	1	Gasket-Base, Air Cleaner	26	24 757 08	1	Kit-Repair, Accelerator Pump
{5	24 053 34	1	Carburetor ASM	27	24 079 07	1	Linkage-Rod
6	24 041 17	1	Gasket-Carburetor	28	24 757 09	1	Kit Repair-Diagram, Accelerator Pump
7	M-0651030	2	Screw-HF	29	24 090 16	1	Lever-Rod
8	24 050 02	1	Filter-Fuel	30	24 079 06	1	Linkage-Rod
9	25 353 15	1	Line-Fuel	31	24 089 27	1	Spring-Linkage
10	24 100 01	2	Nut-Plastic	32	24 090 15	1	Lever-Linkage
11	24 393 04	1	Pump-Fuel-Pulse	33	24 337 30	1	Jet-Main
12	24 086 12	2	Screw-Hex	34	24 086 10	1	Screw-Adjustment, Idle Speed
13	24 353 02	1	Line-Fuel, 15-1/2"	35	24 089 10	1	Spring-Adjustment, Idle Speed
14	M-0650012	1	Screw-HF	36	24 757 01	1	Solenoid ASM Kit (Incl. Ref.# 37-42)
15	47 154 01	1	Clip-Cable	37	24 153 06	1	O-Ring-Solenoid
18	24 154 01	1	Clip-Needle Valve, Inlet	38	24 521 01	1	Seat-Solenoid
19	24 462 01	1	Valve-Needle, Inlet	39	24 153 05	1	O-Ring-Solenoid
20	24 086 09	4	Screw	40	24 153 04	1	O-Ring-Solenoid
21	24 041 09	1	Gasket-Body, Carburetor	41	24 435 01	1	Solenoid
22	24 153 02	1	O-Ring-Jet, Slow	42	24 086 07	2	Screw

*Not Illustrated
Obtain parts from Kohler



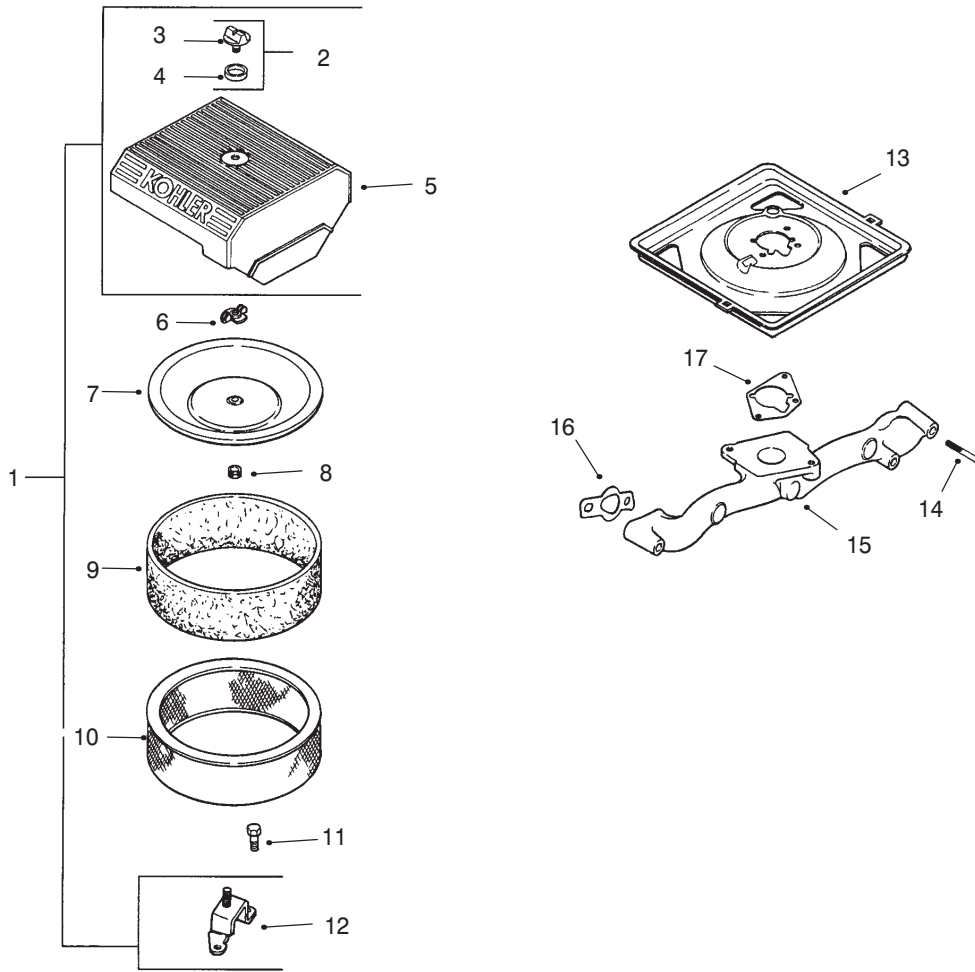
Engine Controls Assembly (Engine: Kohler CH25S PS-68606)

Ref. No.	Part No.	Qty.	Description
1	M-0547050	1	Nut-Lock, Hex
2	24 089 03	1	Spring-Return, Choke
3	M-0645016	4	Screw-HF
4	24 126 56	1	Bracket-Control
5	24 468 01	3	Washer-Plain
6	24 090 07	1	Lever-Actuator, Throttle
7	12 237 01	2	Clamp-Cable
8	M-0545016	2	Screw-HF
9	24 090 03	1	Lever-Control, Throttle
10	M-0446030	1	Nut-Hex
11	M-0401030	1	Screw-Hex, Cap
12	24 079 02	1	Linkage-Choke
13	24 090 05	1	Lever-Choke
14	41 468 03	1	Washer-Spring
15	M-0545020	1	Screw-HF
16	24 089 38	1	Spring-Limiter, Throttle
17	24 089 15	1	Spring-Governor
18	SM-0642025	1	Screw-HF
19	24 090 14	1	Lever-Governor
20	M-0641060	1	Nut-HF
21	25 158 11	1	Bushing-Retaining, Linkage
22	24 089 01	1	Spring-Linkage

Ref. No.	Part No.	Qty.	Description
23	25 158 08	1	Bushing-Retaining, Linkage
24	24 079 01	1	Linkage-Throttle

PROTOTYPE

Obtain parts from Kohler



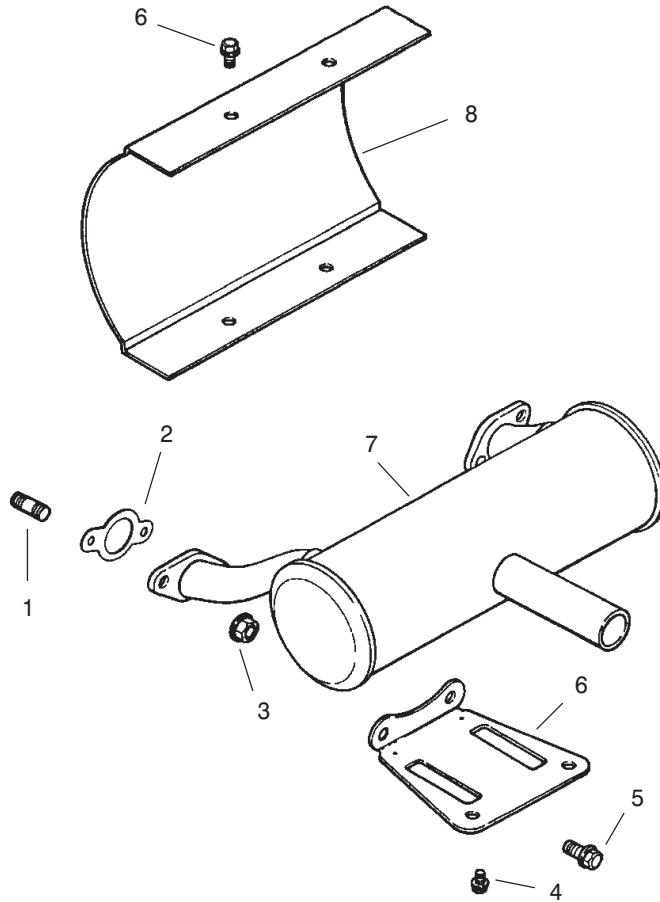
Air Intake/Filtration Assembly (Engine: Kohler CH25S PS-68606)

Ref. No.	Part No.	Qty.	Description
1	24 753 05	1	Kit-Cleaner, Air (Incl. Ref.# 2-5, 12)
2	54 755 01	1	Kit-Knob, Air Cleaner (Incl. Ref.# 3, 4)
3	25 341 03	1	Knob-Cover
4	24 153 15	1	O-Ring
5	24 096 24	1	Cover-Cleaner, Air
6	12 100 01	2	Wingnut
7	24 096 01	1	Cover-Air Cleaner, Inner
8	230046	1	Seal-Air Cleaner, Inner
9	24 083 05	1	Precleaner-Element
10	24 083 03	1	Element-Cleaner, Air
11	M-0645016	3	Screw-HF
12	24 126 43	1	Bracket-Base, Air Cleaner
13	24 094 11	1	Base-Cleaner, Air
14	M-0651055	4	Screw-HF
15	24 164 14	1	Manifold-Intake
16	24 041 01	2	Gasket-Manifold, Intake
17	24 041 06	1	Gasket-Base, Air Cleaner

Ref. No.	Part No.	Qty.	Description

PROTOTYPE

Obtain parts from Kohler



Exhaust Assembly (Engine: Kohler CH25S PS-68606)

Ref. No.	Part No.	Qty.	Description		Ref. No.	Part No.	Qty.	Description
1	25 072 04	4	Stud					
2	24 041 02	2	Gasket-Exhaust					
3	M-0841080	4	Nut-HF					
4	M-0650012	4	Screw-HF					
5	M-0839020	2	Screw					
6	24 126 12	1	Bracket-Muffler					
7	24 068 17	1	Muffler-Canister, Center Outlet					
8	24 314 04	1	Shield-Heat					
*	24 522 85	1	Block-Short					
*	24 782 01	1	Miniblock					
*	54 755 23	1	Set-Gasket					

PROTOTYPE

*Not Illustrated
Obtain parts from Kohler



PROTOTYPE