



Z283L

Z-Master[®] with 62" Side Discharge Mower

Model No. 74216-21000001 and Up

Parts Catalog

Ordering Replacement Parts

To order replacement parts, please supply: the part number, the quantity, and the description of each part desired.

Understanding Reference Numbers

Each identified part in an illustration has a reference number. The reference number for a part also appears in the parts list, along with other information about the part.

This catalog uses two special reference number formats, one to indicate parts in a service assembly and another to indicate the quantity of a given part in an illustration.

Service Assembly Reference Numbers

Parts in service assemblies have reference numbers in the form **a:b**. The **a** represents the reference number of the entire service assembly and the **b** represents a sequential number unique to each part within the service assembly.

For example, a wheel assembly might be identified by reference number **6**, the tire by **6:1**, the valve by **6:2**, and the wheel by **6:3**. When you order the assembly identified by reference number **6**, you receive all parts identified by reference numbers **6:1**, **6:2**, and **6:3**. However, you may also order any part individually.

Reference numbers of this type appear in illustrations and in part lists.

Reference Numbers Indicating Quantity

In an illustration, if a reference number indicates more than one part, the reference number has the form **nX y**. The **n** represents the quantity of the part, the **X** is the multiplication symbol, and the **y** represents the reference number.

For example, in an illustration, the reference number **2X 37** means that two of the parts identified by reference number **37** are indicated.

Contents

Description	Page	Description	Page
Front Frame Assembly	3	Spindle and Pulley Assembly	21
Caster and Wheel Assembly	4	Belts and Idler Arm Assembly	22
Rear Frame and Wheel Assembly	5	Stand Assembly	23
Brake and Wheel Hub Assembly	6	Air Filter/Muffler	24
Control Panel Assembly	7	Piston/Crankshaft	25
Hydraulic System Assembly	8	Cylinder/Crankcase	26
Idler Assembly	10	Valve/Camshaft	28
Frame and Deck Assembly	11	Lubrication-Equipment	30
Tank and Fuel Lines Assembly	12	Cooling-Equipment	32
Engine Assembly	13	Electric-Equipment	34
Engine Assembly (Continued)	15	Control-Equipment	36
Rear Hood Assembly	16	Carburetor	38
Rear Bumper Assembly	17	Fuel-Tank/Fuel-Valve	40
Electrical Assembly	18	Starter	41
Deck, Deflector and Roller Assembly	20		

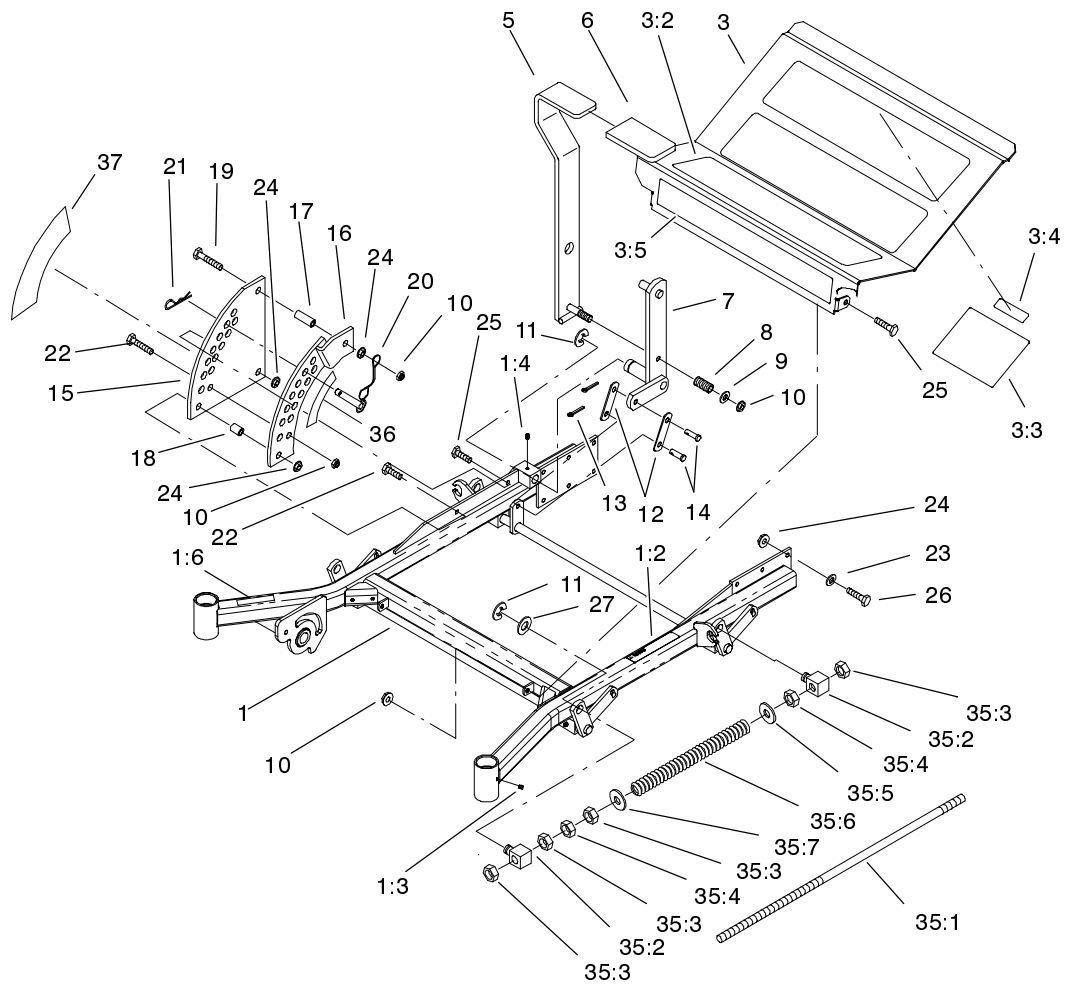
Accessories

Description	Model / Part No.	Description	Model / Part No.
Seat-Suspension, High	99-8522	Hitch Kit	99-8925
ZRT Foot Lift Assist	100-4336	Blade Assembly-Atomic 21.5	104-1303
ROPS Kit	99-4649	62" / 72" Striping Kit	100-3252

Part Description Abbreviations

Part descriptions in this catalog may include the following abbreviations.

Abbreviation	Meaning	Abbreviation	Meaning
AR	as required	INC	incorporated
ASM	assembly	LH	left hand
CARR	carriage	NI	nylon insert
DEG	degrees	PPH	Phillips pan head
FH	flat head	PTH	Phillips truss head
GA	gauge	PTO	power take off
HF	hex flange	RH	right hand
HH	hex head	SFH	slotted fillister head
HHF	hex head flange	SHH	slotted hex head
HLH	hex lag head	SQH	square head
HJ	hex jam	SHWH	slotted hex washer head
HOC	height-of-cut	SPH	slotted pan head
HS	hex socket	SRH	slotted round head
HSBH	hex socket button head	STD	standard
HSFH	hex socket flat head	TAP	self tapping
HSH	hex socket head	TTH	Torx truss head
HWH	hex washer head	WH	wing head
HWHTF	hex washer head thread forming		



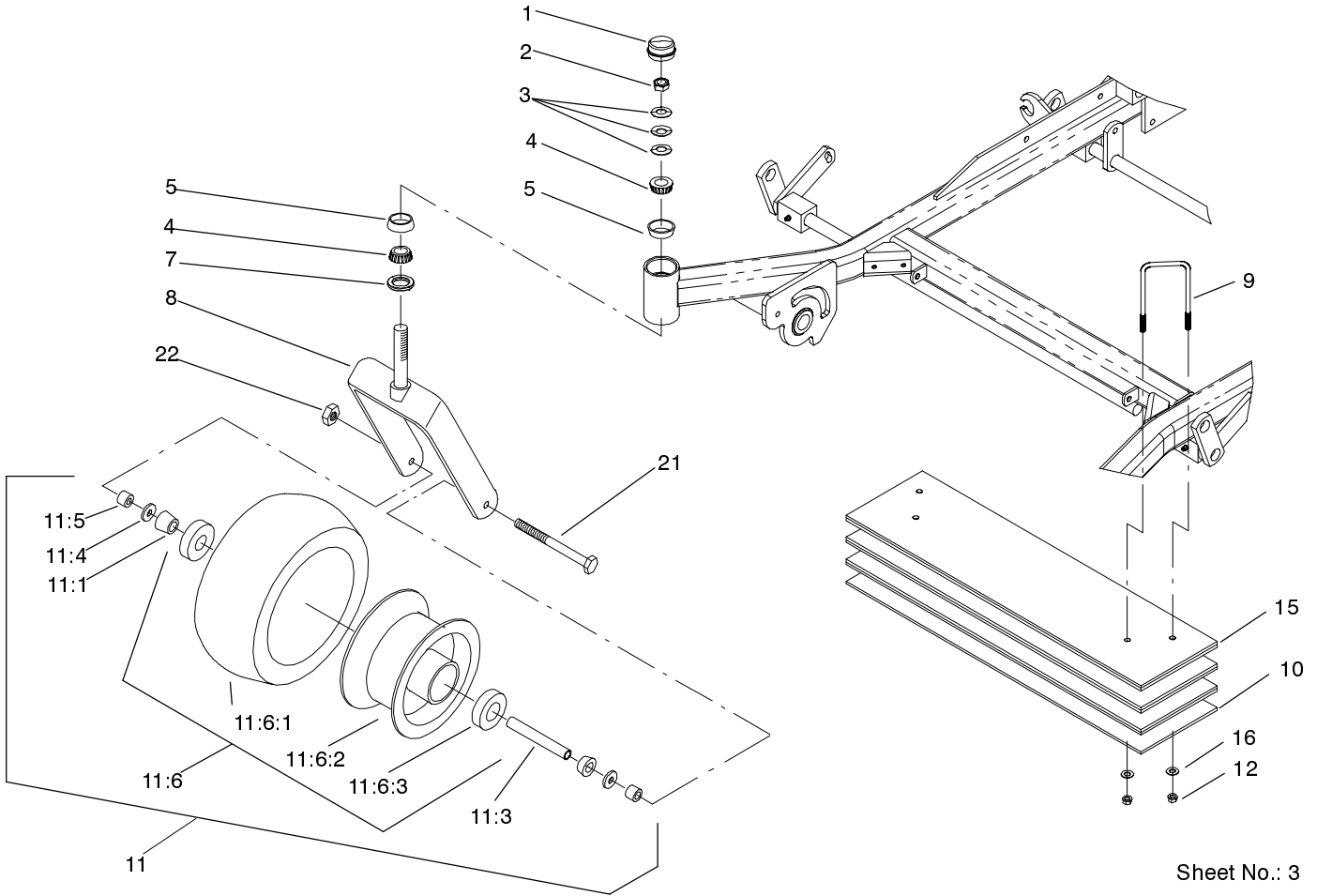
Sheet No.: 2

Front Frame Assembly

Ref. No.	Part No.	Qty.	Description
1	104-5132	1	Frame ASM
1:2	1-633818	1	Decal-Warning
1:3	1-811010	2	Plug
1:4	302-19	5	Fitting-Grease
1:5	94-1291	2	Bushing-Special
1:6	104-7759	1	Decal-Warning
3	100-6509	1	Floorpan ASM
3:2	1-633553	3	Pad-Antiskid
3:3	1-633766	1	Decal-Check
3:4	98-5954	1	Decal-Missing, Cover
3:5	1-633737	1	Decal-Z-Master
5	1-632324-03	1	Lever-Lift
6	1-633295	1	Grip-Lever, Lift
7	1-632219-03	1	Arm-Lift, Deck
8	1-633325	1	Spring-Compression
9	3256-24	1	Washer-Flat
10	3296-39	5	Nut-Lock, NI
11	32151-103	5	Ring-Snap
12	1-633068	2	Arm-Lift, Deck
13	3272-10	2	Pin-Cotter
14	1-808284	2	Pin-Clevis
15	1-633889-01	1	Plate-Lift, Deck
16	1-632899-01	1	Plate-Lift, Deck
17	1-633082	1	Bushing-Lever, Lift
18	1-633080	1	Bushing-Lever, Lift
19	323-13	1	Screw-HH

Ref. No.	Part No.	Qty.	Description
20	1-633097	1	Pin-Hitch W/Lanyard
21	1-806005	1	Pin-Cotter, Hair
22	323-9	2	Screw-HH
23	98-5975	12	Washer-Belleville
24	3290-357	15	Nut-Flange, Lock
25	323-6	3	Screw-HH
26	323-7	12	Screw-HH
27	3256-29	4	Washer-Flat
★35		2	ASM, Spring Front Frame
35:1	1-633096	1	Rod-Lift, Deck
35:2	1-633441	2	Swivel-Deck Mount, Rear
35:3	3217-11	4	Nut-Hex
35:4	3218-6	2	Nut-Jam
35:5	3256-7	2	Washer-Flat
35:6	1-633064	1	Spring-Support, Deck
36	1-633706	1	Decal-Height, Deck
37	1-633345	1	Decal-Height, Deck

★ Not serviced

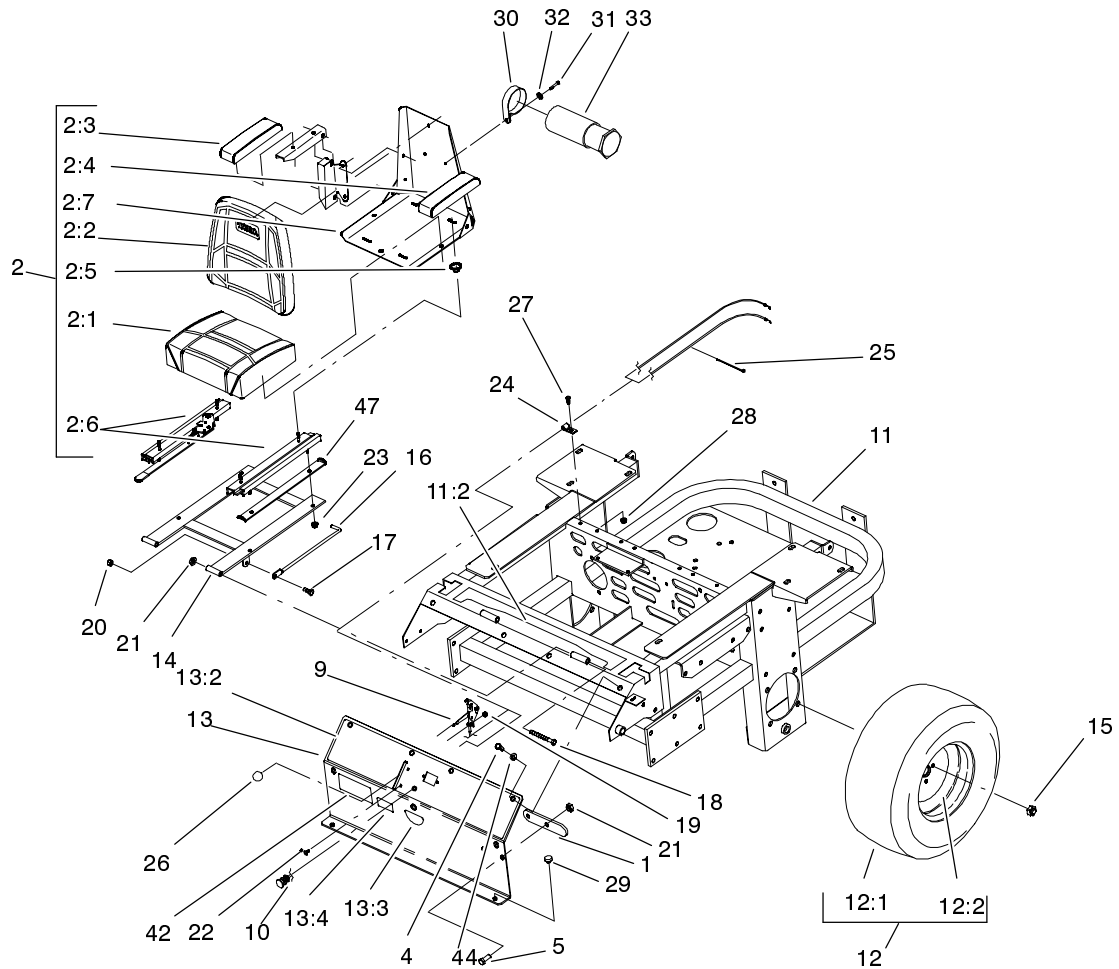


Sheet No.: 3

Caster and Wheel Assembly

Ref. No.	Part No.	Qty.	Description
1	1-543513	2	Cap-Grease
2	3296-51	2	Nut-Lock, NI
3	1-633508	6	Washer-Bellville
4	254-94	4	Bearing-Taper/Cone
5	254-72	4	Bearing-Taper/Cup
7	1-543511	2	Seal-Grease
8	1-642111-01	2	Caster
9	100-2339	2	U-Bolt
10	100-2333-01	1	Bar - Weight
11	1-644251	2	Caster Wheel ASM
11:1	1-633585	2	Bearing-Cone, Tapered
11:3	1-633959	1	Spacer-Caster, Front
11:4	1-633580	2	Seal-Bearing
11:5	1-633581	2	Spacer-Bearing
11:6		1	Wheel & Tire ASM
11:6:1	1-523009	1	Tire
11:6:2	1-633987	1	Wheel
11:6:3	1-633584	2	Bearing-Cup
12	3296-39	4	Nut-Lock, NI
15	99-4646-01	3	Weight Bar ASM
16	3256-4	4	Washer-Flat
21	325-24	2	Screw-HH
22	3296-45	2	Nut-Lock, NI

Ref. No.	Part No.	Qty.	Description



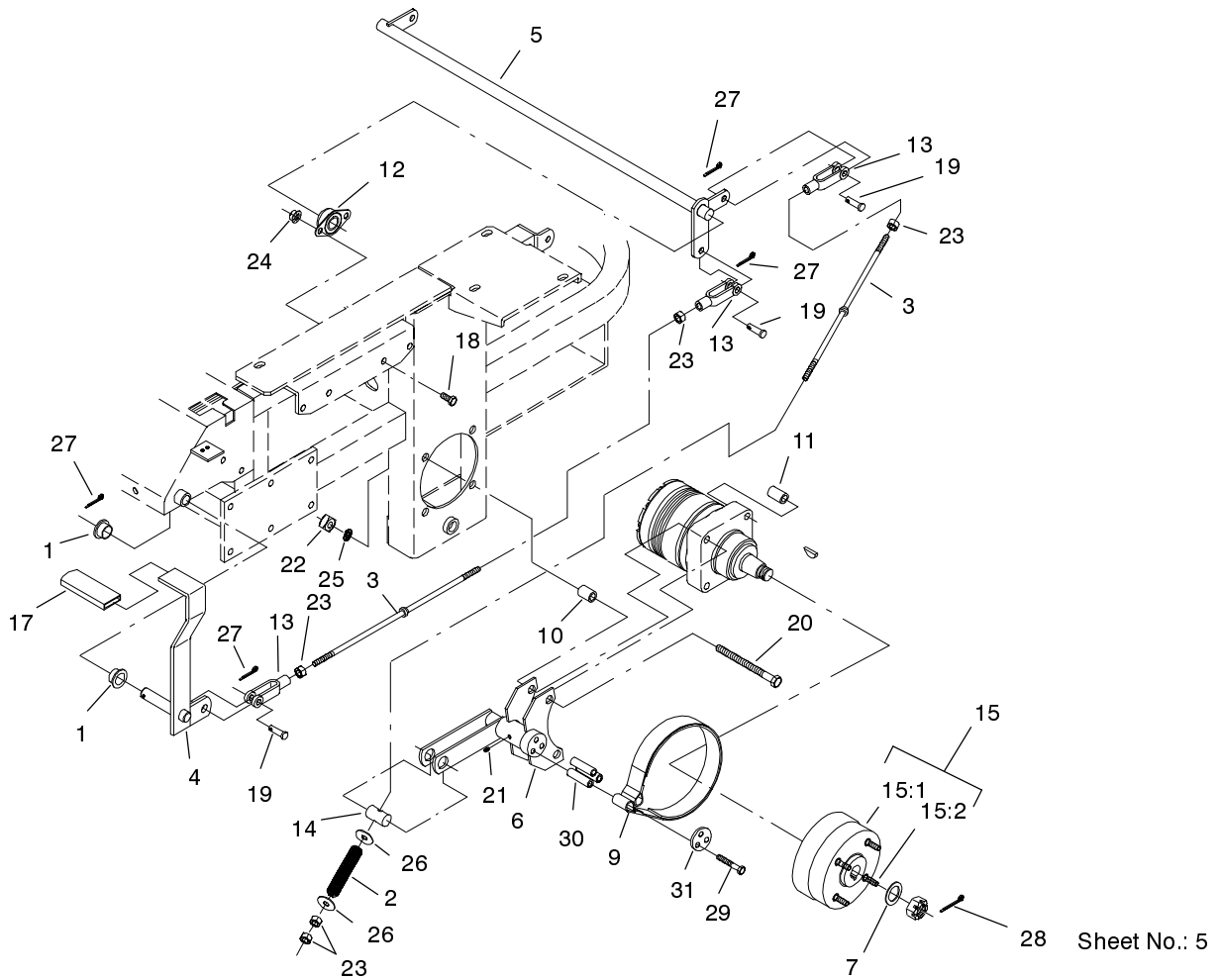
Sheet No.: 4

C-2890

Rear Frame and Wheel Assembly

Ref. No.	Part No.	Qty.	Description
1	1-633964-03	1	Stop-Brake, Park
2	1-633705	1	Seat W/Tracks
2:1	103-0290	1	Cushion-Bottom, Seat
2:2	104-7754	1	Cushion - Back, Seat
2:3	1-633710	1	Cushion-Armrest, RH
2:4	1-633711	1	Cushion-Armrest, LH
2:5	1-543401	4	Spacer-Track
2:6	1-643255	1	Track-Seat
2:7	1-633859	1	Frame-Seat
4	322-3	6	Screw-HH
5	323-6	2	Screw-HH
9	1-633696	1	Cable-Throttle
10	1-603336	1	Control-Choke
11	100-4261	1	Rear Frame ASM
11:2	103-0245	1	Decal-Console, Top
12	1-633970	2	Wheel & Tire ASM
12:1	1-633993	1	Tire
12:2	1-633992	1	Wheel
13	99-4623	1	Console ASM
13:2	100-4311	1	Decal-Panel, Control
13:3	103-0262	1	Decal-Valve, Fuel
13:4	98-4387	1	Decal-Protection, Ear
14	1-632187-03	1	Frame - Seat
15	242-50	8	Nut - Lug
16	1-633293	1	Rod-Holdup, Seat
17	322-5	1	Screw-HH

Ref. No.	Part No.	Qty.	Description
18	323-39	2	Screw-HH
19	3296-2	2	Nut-Lock
20	3296-29	1	Nut-Lock
21	3296-39	4	Nut-Lock, NI
22	1-807513	2	Bolt-CARR
23	32128-20	4	Nut-HF
24	1-513762	1	Clip-Loom
25	1-303335	1	Tie-Plastic
26	1-513592	1	Knob-Ball, Red
27	321-4	1	Screw-HH
28	32128-33	1	Nut-HF
29	1-513658	2	Bumper-Catcher, Grass
30	2412-133	2	R-Clamp
31	32104-76	2	Screw
32	3256-16	2	Washer-Flat
33	74-0720	1	Tube-Manual
42	104-7793	1	Decal - Z283I
44	3256-23	6	Washer-Flat
47	1-633872-03	2	Stop-Seat

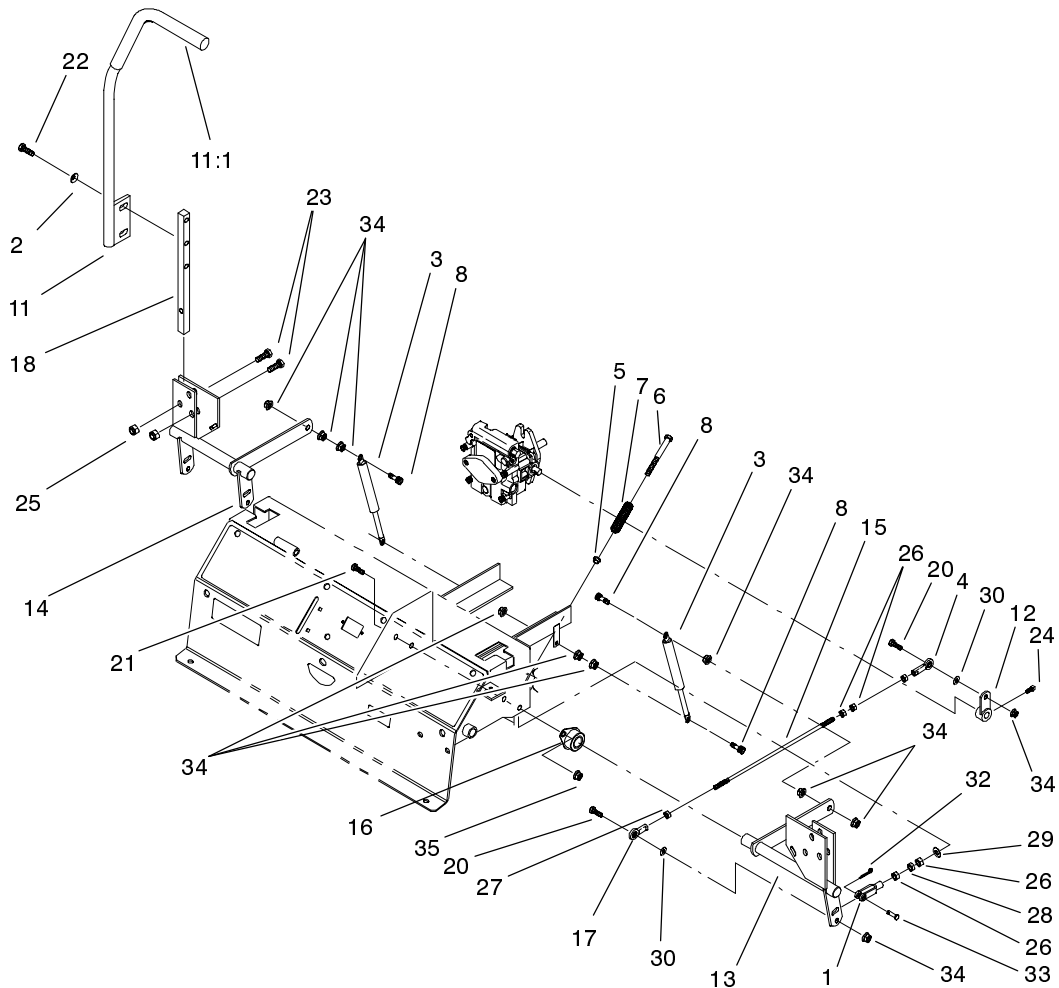


Sheet No.: 5

Brake and Wheel Hub Assembly

Ref. No.	Part No.	Qty.	Description
1	1-513140	2	Bearing-Control
2	1-633454	2	Spring-Brake
3	1-633477	3	Rod-Brake
4	1-634500	1	Brake Lever/Grip ASM
5	1-632217-03	1	Shaft-Brake
6	103-0352-03	2	Bracket-Brake
7	1-523157	2	Washer-Spacer
9	103-0355	2	Band-Brake
10	1-633380	4	Spacer-Wheel, Short
11	1-633382	4	Spacer-Wheel, Long
12	1-633102	2	Bearing-Flange, Side
13	1-633131	4	Yoke-Linkage, Brake
14	1-633144	2	Pin-Trunion
15	103-0590	2	Hub-Wheel W/Studs
15:1	103-0589	1	Hub-Wheel
15:2	1-633926	4	Stud-Heel
17	1-633268	1	Grip-Lever, Brake
18	323-4	4	Screw-HH
19	1-808285	4	Pin-Clevis
20	325-17	8	Screw-HH
21	1481	2	Fitting-Grease
22	103-0131	8	Nut-Square
23	3219-3	8	Nut-HH
24	3290-357	4	Nut-Flange, Lock
25	3253-7	8	Washer-Lock
26	3256-4	4	Washer-Flat

Ref. No.	Part No.	Qty.	Description
27	3272-10	7	Pin-Cotter
28	1-806800	2	Pin-Cotter
29	322-9	6	Screw-HH
30	103-0384	6	Spacer
31	103-0374	2	Retainer-Band, Brake

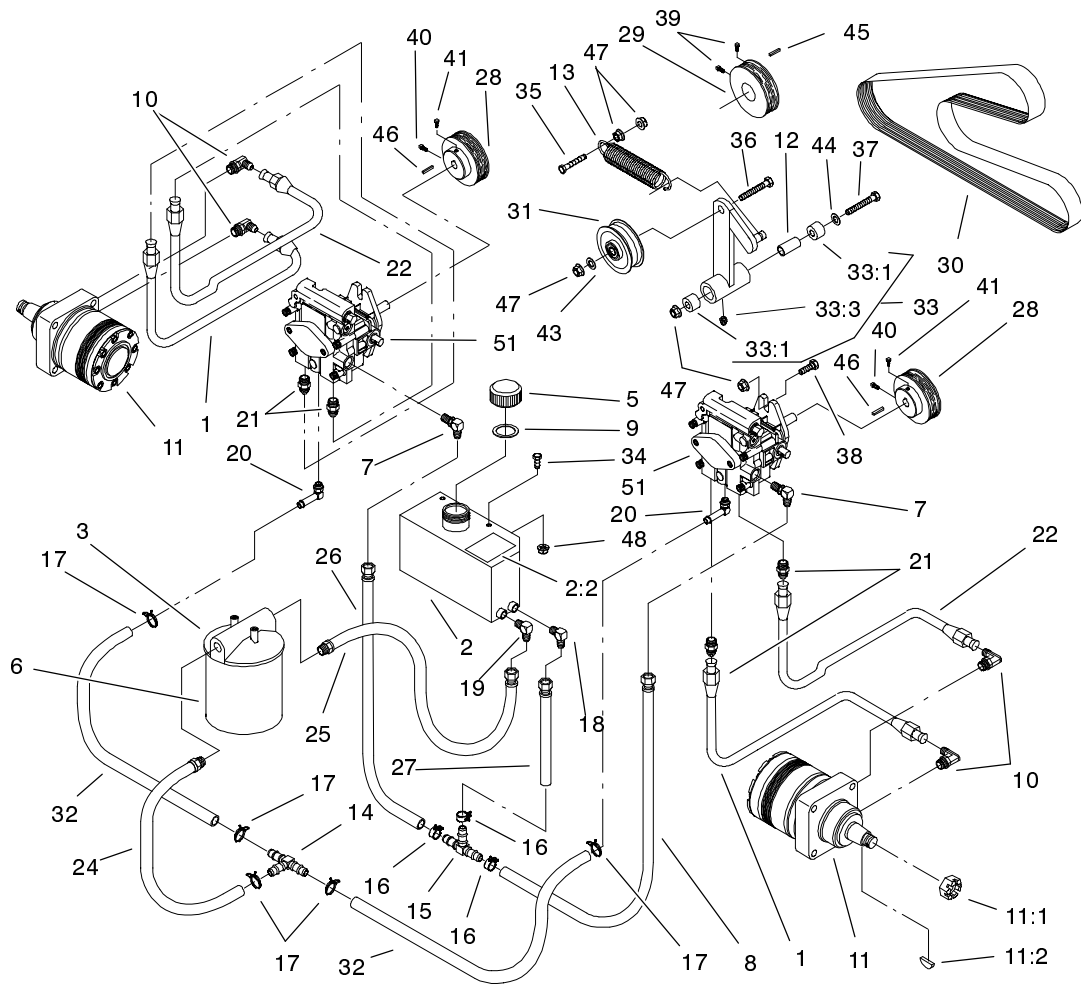


Sheet No.: 6

Control Panel Assembly

Ref. No.	Part No.	Qty.	Description	Ref. No.	Part No.	Qty.	Description
1	1-303105	2	Yoke-Adjustable	27	3220-20	2	Nut-Jam
2	98-5975	4	Washer-Belleville	28	3220-2	2	Nut
3	1-523027	2	Damper-Control	29	3256-2	2	Washer-Flat
4	1-543017	2	Balljoint-RH	30	3256-3	4	Washer-Flat
5	1-603735	2	Bushing-Flanged, Nylon	32	3272-5	2	Pin-Cotter
6	1-603737	2	Bolt-Return, Neutral	33	1-808280	2	Pin-Clevis
7	1-603807	2	Spring-Return, Neutral	34	32128-20	16	Nut-HF
8	1-403180	4	Screw-HH	35	3290-357	8	Nut-Flange, Lock
11	103-0632	1	RH Lever/Grip ASM	*37	103-0631	1	LH Lever/Grip ASM
11:1	1-633257	1	Grip-Control, Motion				
12	1-632208	2	Wld,Pump Control Arm				
13	1-642319	1	Control-Motion, LH				
14	1-642320	1	Control-Motion, RH				
15	1-633153	2	Linkage-Pump/Lever				
16	1-633102	4	Bearing-Flange, Side				
17	1-633152	2	Balljoint-Thread, LH				
18	103-0407	2	Arm-Shaft, Control				
20	322-6	4	Screw-HH				
21	323-4	8	Screw-HH				
22	323-6	4	Screw-HH				
23	323-9	6	Screw-HH				
24	1-803022	2	Screw				
25	3296-39	6	Nut-Lock, NI				
26	3219-2	10	Nut-Hex				

* Not illustrated



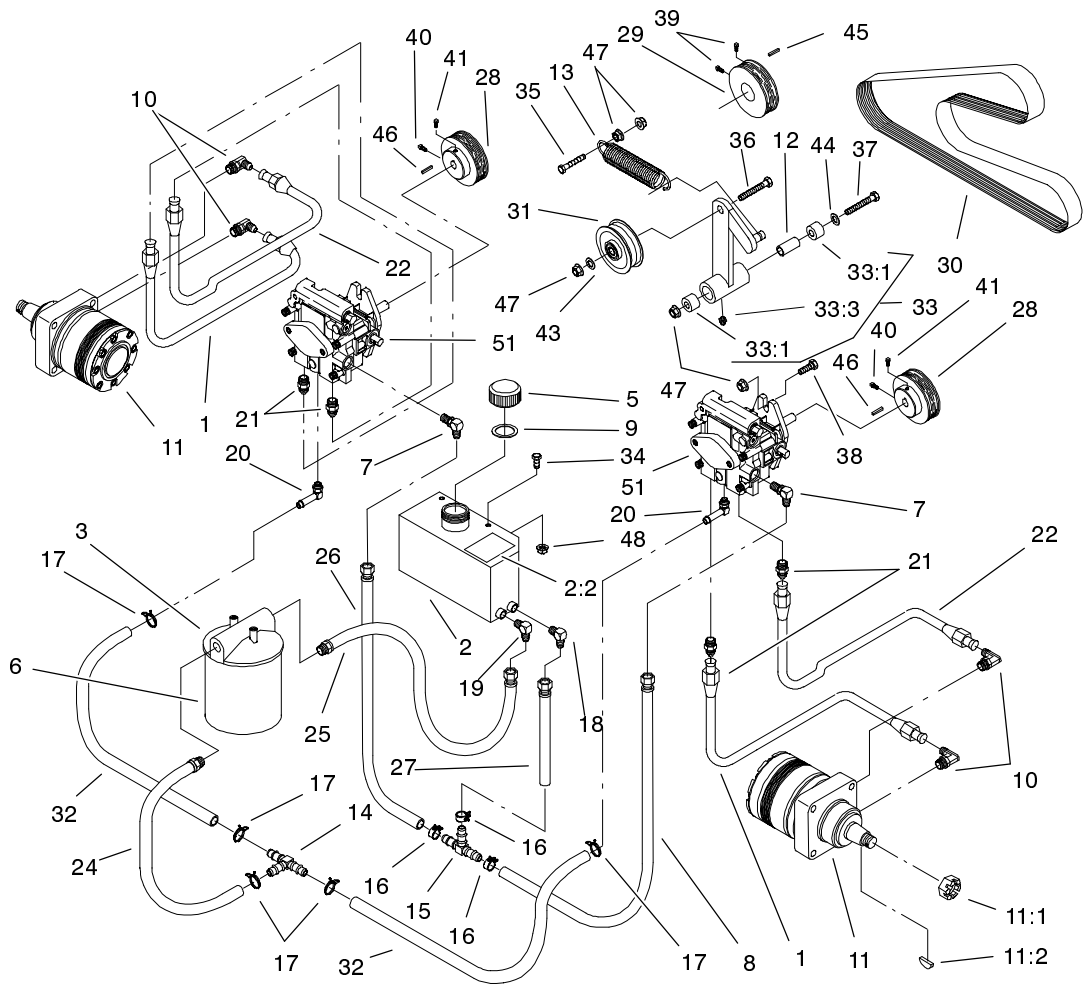
Sheet No.: 7

Hydraulic System Assembly

Ref. No.	Part No.	Qty.	Description
1	1-633774	2	Hose-Upper
2	99-4625	1	Hydraulic Tank ASM
2:2	1-523552	1	Decal-Tank, Hydraulic
3	1-513006	1	Filter-Head
5	1-513167	1	Cap
6	1-633750	1	Filter-Hydraulic
6	1-633752	1	Filter-Hydraulic, Winter
7	1-513840	2	Fitting-90 DEG
8	1-522217	1	Low Pressure Hose ASM
9	1-523103	1	Gasket-Cap, Tank
10	1-633786	4	Fitting-90 DEG
11	1-523328	2	Motor-Wheel
11:1	1-809036	1	Nut-HH
11:2	3257-42	1	Key-Woodruff
*11:99	1-000099	1	Kit-Seal
*11:99	1-000139	1	Kit-Bearing
12	1-603384	1	Bushing-Pivot, Idler
13	1-603413	1	Spring-Extension
14	1-603721	1	Fitting-Tee, Hose
15	1-603722	1	Fitting-Tee, Hose
16	1-603826	3	Clamp-Hose
17	1-603827	5	Clamp-Hose
18	1-603987	1	Fitting-Elbow
19	1-603988	1	Fitting-Elbow

Ref. No.	Part No.	Qty.	Description
20	1-603989	2	Fitting
21	1-603990	4	Fitting-Straight
22	1-633775	2	Hose-Lower
24	1-632281	1	Hose ASM
25	1-632282	1	Hose ASM
26	1-632285	1	Hose ASM
27	1-632286	1	Hose ASM
28	1-633568	2	Sheave
29	1-633567	1	Sheave
30	1-633749	1	Belt-Drive, Pump
31	1-633167	1	Sheave-Idler
32	1-633335	2	Hose-Pressure, Low
33	1-634277	1	Bearing Arm ASM
33:1	1-513034	2	Sleeve-Bearing
33:3	302-40	1	Fitting-Grease
34	321-4	2	Screw-HH
35	323-8	1	Screw-HH
36	323-9	1	Screw-HH
37	1-800805	1	Screw-HH
38	323-7	4	Screw-HH
39	1-803022	2	Screw
40	3242-6	2	Screw-Set, SQH
41	3242-4	2	Screw-Set, SQH
43	3256-3	1	Washer-Flat
44	3256-4	1	Washer-Flat
45	13-2840	1	Key-Square

* Not illustrated



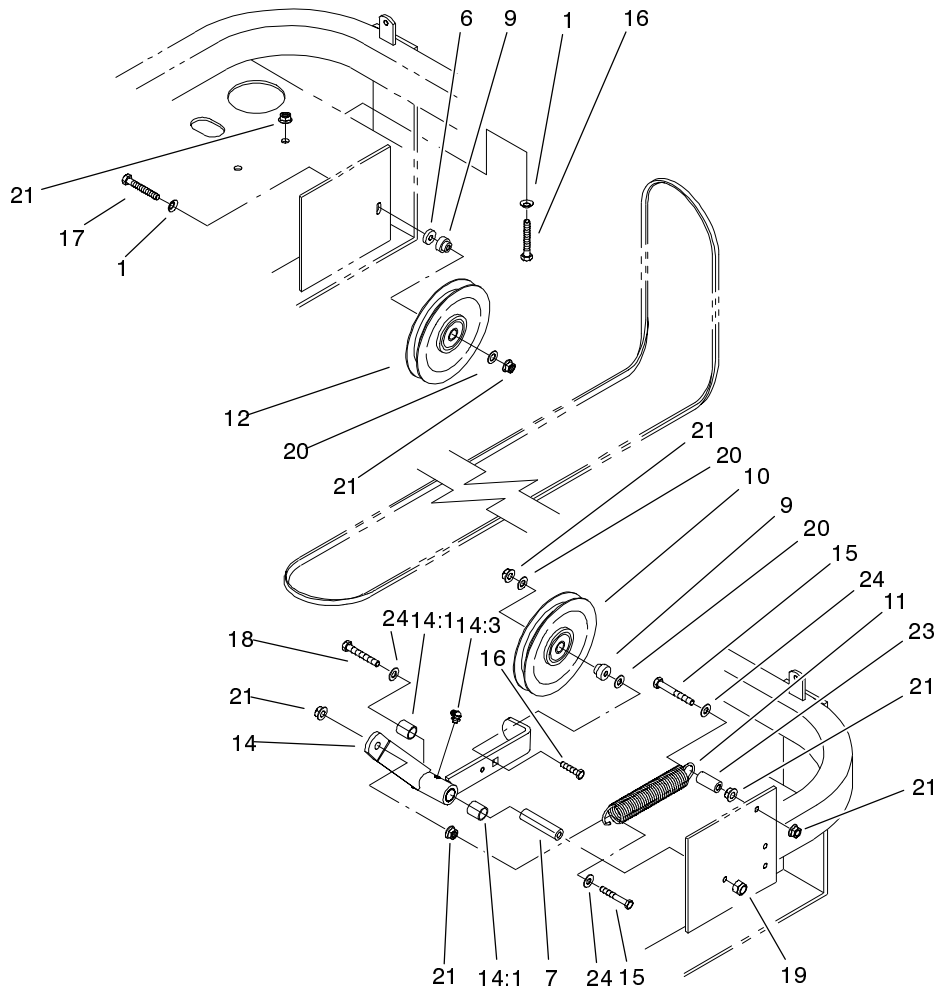
Sheet No.: 7

Hydraulic System Assembly (Continued)

Ref. No.	Part No.	Qty.	Description
46	1-807272	2	Key-Machine
47	3290-357	8	Nut-Flange, Lock
48	32128-33	2	Nut-HF
51	1-603841	2	Pump-Hydraulic
*51	80-6130	1	Kit-Seal, Overhaul

Ref. No.	Part No.	Qty.	Description

* Not illustrated

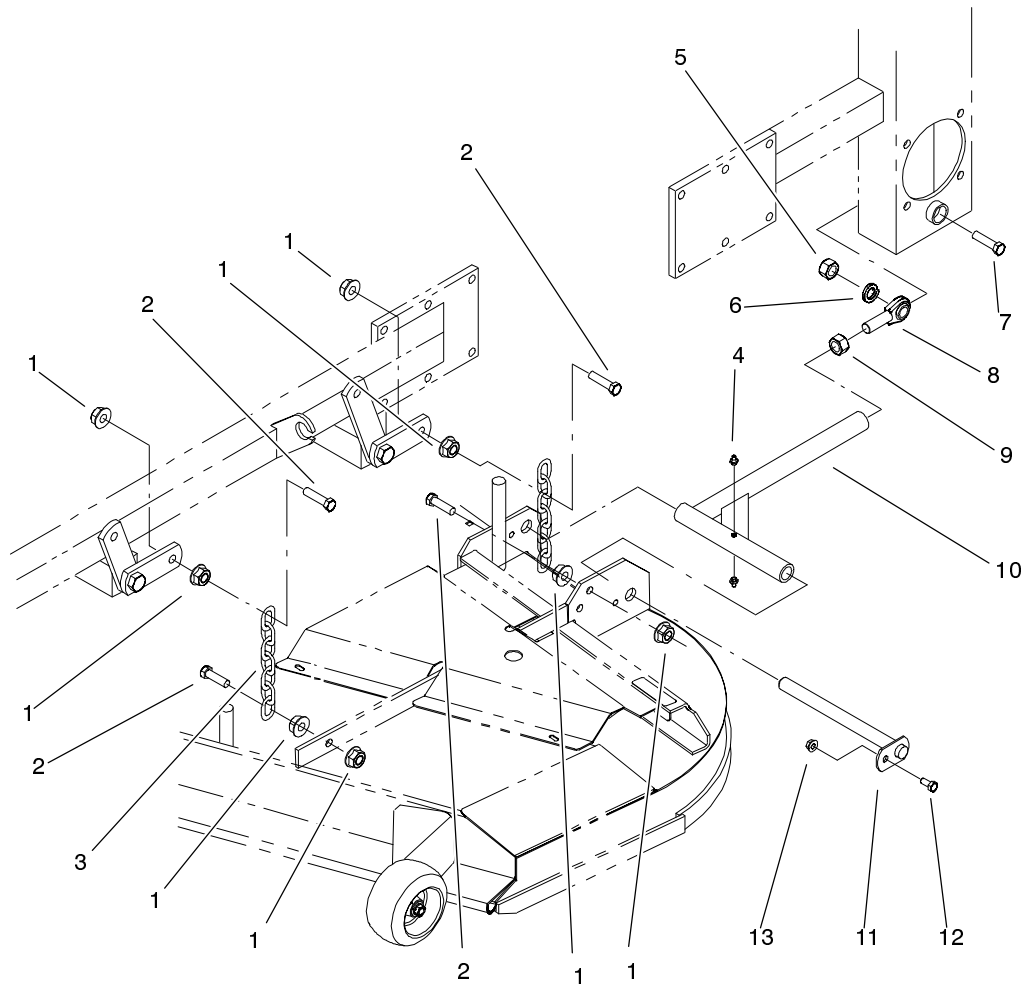


Sheet No.: 10

Idler Assembly

Ref. No.	Part No.	Qty.	Description
1	98-5975	1	Washer-Belleville
6	1-603050	1	Spacer
7	1-603384	1	Bushing-Pivot, Idler
9	1-603496	2	Bushing-Idler
10	99-4638	1	Idler
11	1-603402	1	Spring-Extension
12	1-633166	1	Idler Pulley
14	99-4677	1	Idler Arm ASM
14:1	1-513034	2	Sleeve-Bearing
14:3	302-40	1	Fitting-Grease
15	323-11	2	Screw-HH
16	323-9	1	Screw-HH
17	323-13	1	Screw-HH
18	1-800805	1	Screw-HH
19	3296-39	1	Nut-Lock, NI
20	3256-24	3	Washer-Flat
21	3290-357	6	Nut-Flange, Lock
23	1-603401	1	Spacer-Fender
24	3256-4	3	Washer-Flat

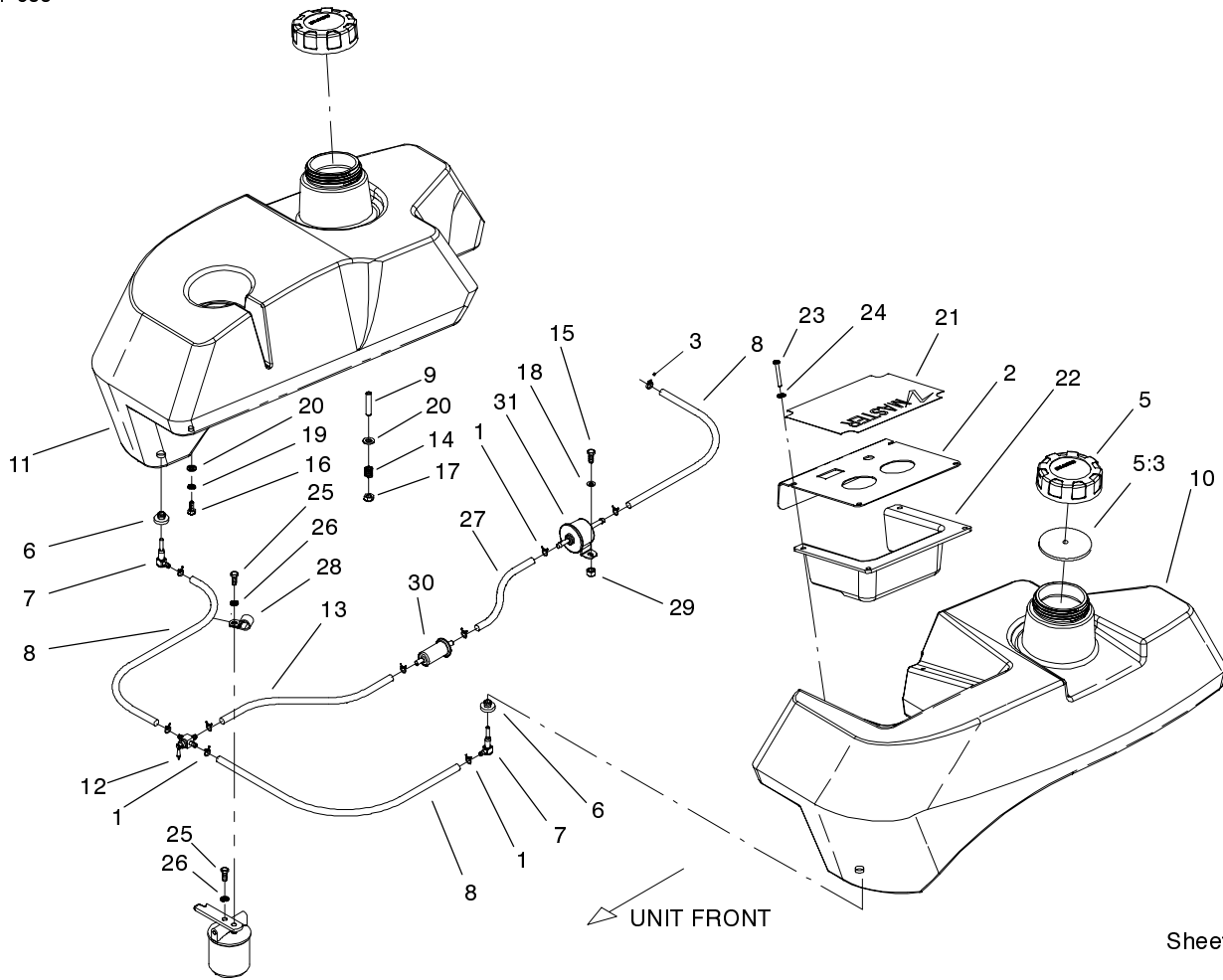
Ref. No.	Part No.	Qty.	Description



Sheet No.: 12

Frame and Deck Assembly

Ref. No.	Part No.	Qty.	Description
1	32128-37	16	Nut-HF
2	1-800811	8	Screw-Cap HH
3	1-633447	4	Chain-Lift, Deck
4	302-19	4	Fitting-Grease
5	3217-11	2	Nut-Hex
6	3253-8	2	Washer-Lock
7	327-11	2	Screw-HH
8	1-633029	2	Balljoint-Spherical
9	3219-6	2	Nut-Hex
10	103-1072-01	2	Strut-Deck
11	1-632199-01	2	Pin-Strut, Deck
12	322-3	2	Screw-HH
13	3296-29	2	Nut-Lock



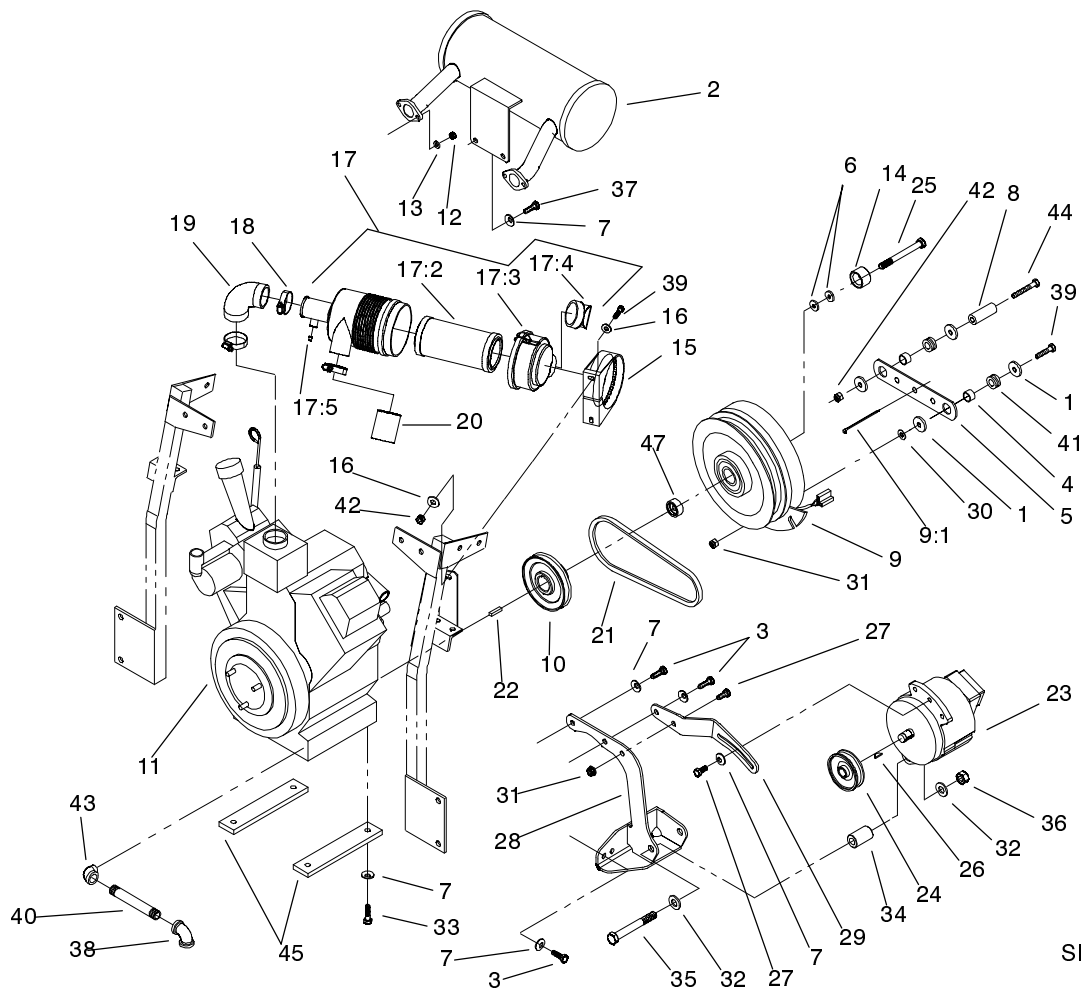
Sheet No.: 13

Tank and Fuel Lines Assembly

Ref. No.	Part No.	Qty.	Description
1	1-303077	9	Clamp-Line, Fuel
2	99-4617-03	1	Panel-Control
3	1-303308	1	Clamp-Hose
5	88-3980	2	Gas Cap ASM
5:3	88-4010	1	Gasket-Cap, Gas
6	1-513645	2	Bushing-Valve, Fuel
7	1-543277	2	Elbow-Tank, Fuel
8	1-543456	3	Hose-Fuel
9	1-633023	6	Stud
10	104-5100	1	Tank-Fuel, LH
11	104-5101	1	Tank-Fuel, RH
12	1-633347	1	Valve-Fuel
13	1-303426	1	Hose-Fuel Line
14	1-633349	6	Spring-Tank, Fuel
15	321-4	2	Screw-HH
16	322-3	2	Screw-HH
17	3296-47	6	Nut-Lock, NI
18	3256-2	2	Washer-Flat
19	3253-4	2	Washer-Lock
20	3256-23	8	Washer-Flat
21	99-4612	1	Decal-Control Panel
22	99-4940	1	Shield-Panel, Control
23	1-803071	4	Screw
24	1-303435	4	Washer-Spring
25	321-3	2	Screw-HH
26	3253-3	2	Washer-Lock

Ref. No.	Part No.	Qty.	Description
27	1-643270	1	Hose-Fuel
28	1-513762	1	Clip-Loom
29	32128-33	2	Nut-HF
‡30	49019-1055	1	Filter-Fuel, Kawasaki
‡31	49040-2065	1	Pump-Fuel, Kawasaki

‡ Obtain locally.

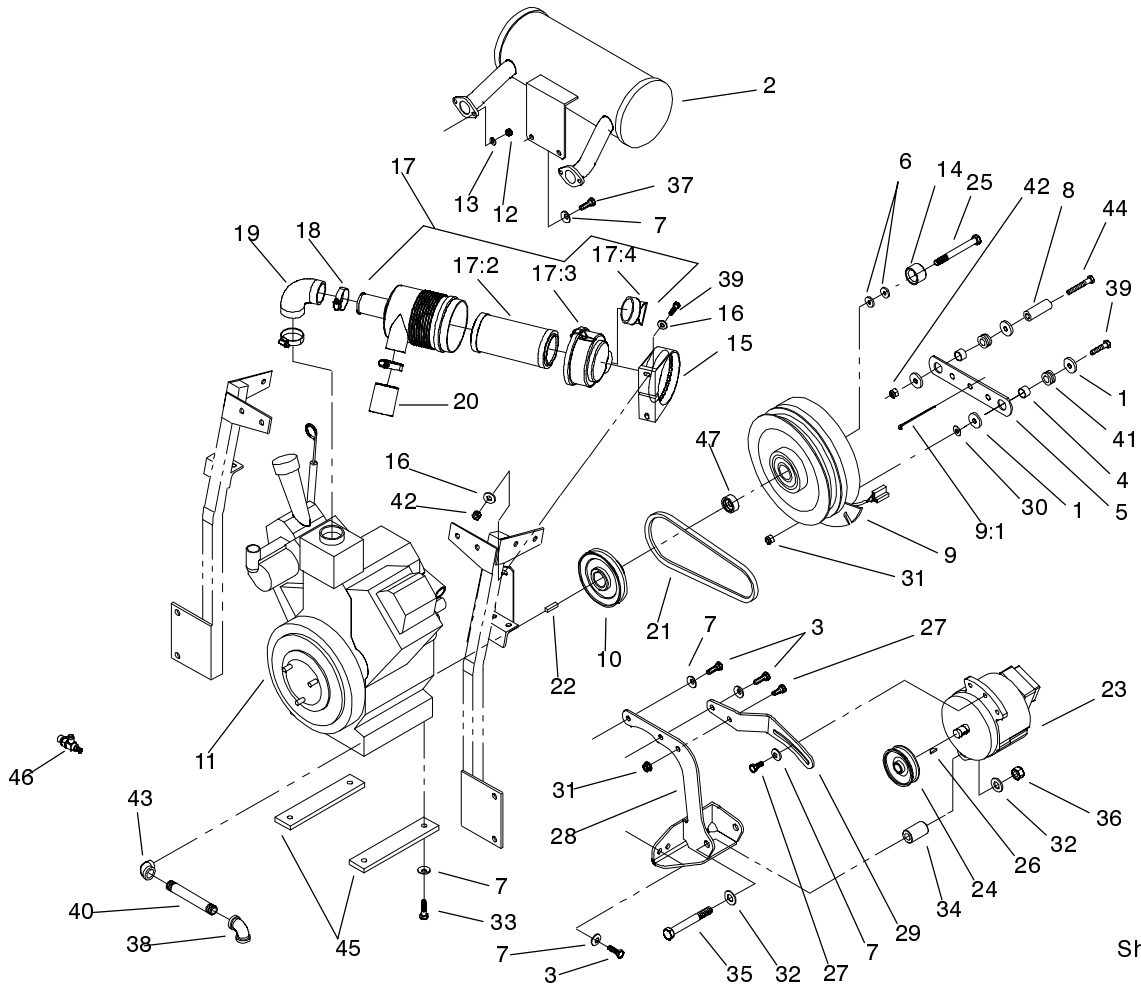


Sheet No.: 14

Engine Assembly

Ref. No.	Part No.	Qty.	Description	Ref. No.	Part No.	Qty.	Description
1	1-613235	4	Washer	20	1-643084	1	Hose-Inlet, Air
2	1-633832	1	Muffler	21	1-633853	1	Belt, Alternator Drive
3	33114-025	4	Screw-HH	22	1-807259	1	Key
4	1-633545	2	Spacer-Grommet	23	1-633881	1	Alternator-37 Amp
5	1-633543-03	1	Strap-Clutch, Brake	24	1-633882	1	Sheave-Alternator
6	1-603610	2	Washer-Spring	25	48-7570	1	Screw - HH
7	1-303334	11	Washer-Spring	26	3257-24	1	Key-Woodruff
8	1-643008	1	Spacer-Anchor, Clutch	27	322-3	1	Screw-HH
9	103-0665	1	Clutch ASM	28	1-632835-03	1	Bracket-Alternator
9:1	1-303335	1	Tie-Plastic	29	1-633838-03	1	Arm-Tension, Alternator
10	1-633841	1	Sheave W/Hub	30	3256-3	1	Washer-Flat
★11		1	Engine-Kawasaki, Fd661d As03	31	32128-20	2	Nut-HF
12	33013-00	4	Nut-Hex	32	3256-26	2	Washer-Flat
13	3253-3	4	Washer-Lock	33	33114-030	4	Screw-HH
14	103-0152	1	Keeper, Clutch	34	1-633839	1	Spacer
15	95-5806	1	Bracket-Mounting	35	325-17	1	Screw-HH
16	3256-3	4	Washer-Flat	36	3296-23	1	Nut-Lock, NI
17	95-5805	1	Air Cleaner ASM	37	33114-016	2	Screw-HH
17:2	93-2195	1	Filter	38	1-303428	1	Elbow-90 DEG
17:3	94-3652	1	Cover ASM	39	322-6	3	Screw-HH
17:4	94-1414	1	Valve-Vacuator	40	1-643167	1	Nipple
17:5	285-17	1	Plug-Pipe	41	1-633630	2	Grommet-Brake
18	1-643009	3	Clamp-Hose	42	3296-29	3	Nut-Lock
19	1-643083	1	Hose-Aircleaner	43	1-403124	1	Elbow-90 DEG
				44	322-38	1	Screw-HH

★ Not serviced

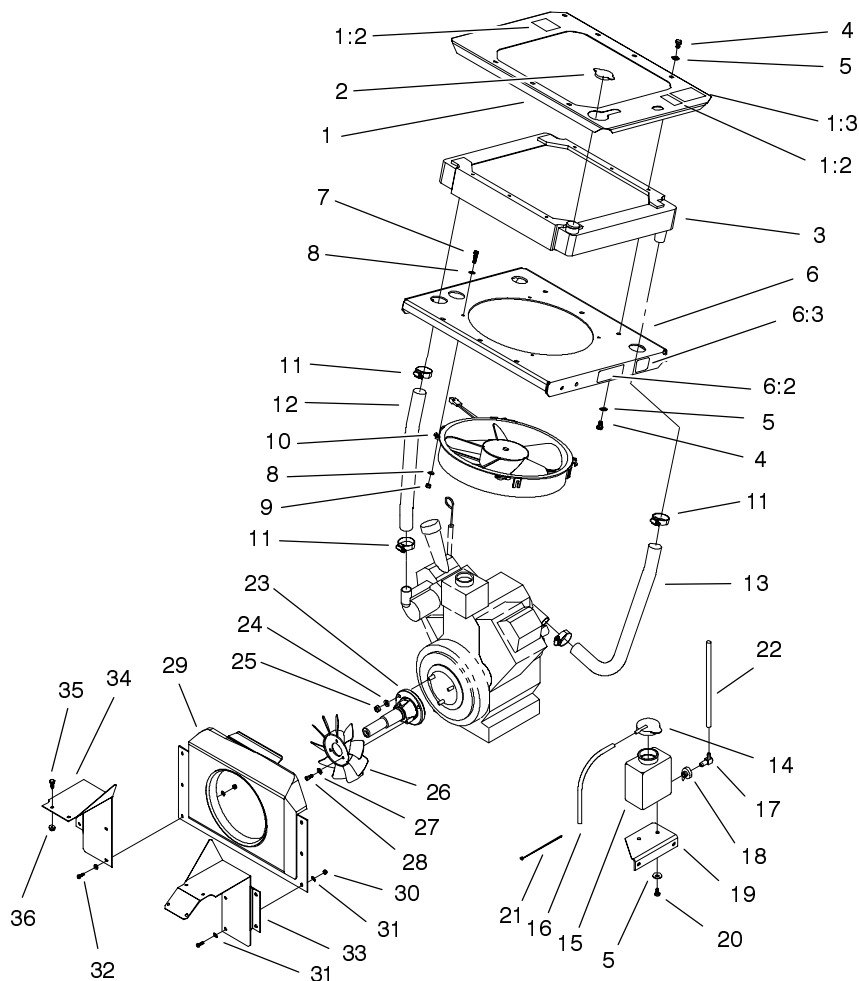


Sheet No.: 14

Engine Assembly

Ref. No.	Part No.	Qty.	Description
45	1-643007-03	2	Spacer-Engine
47	103-0114	1	Spacer-Clutch

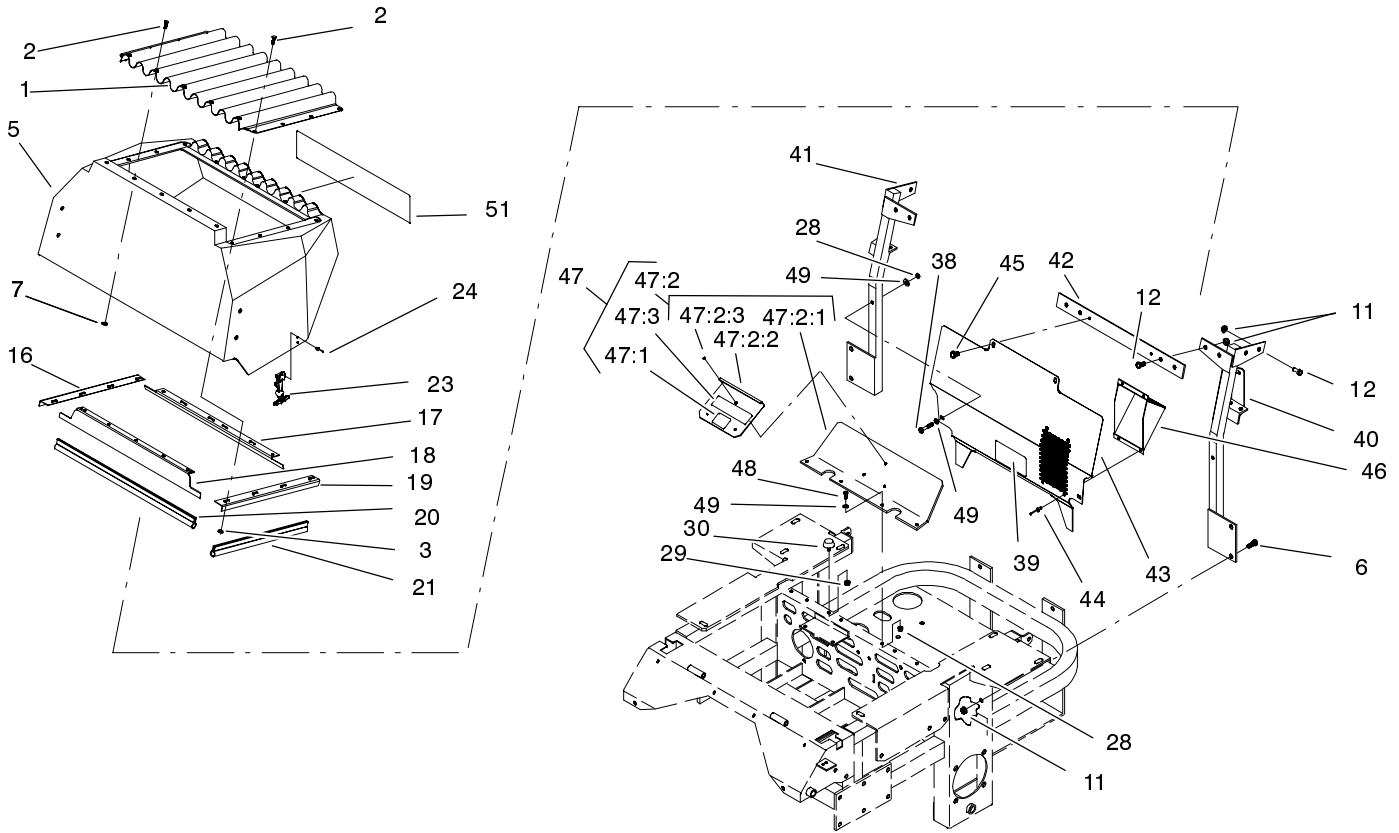
Ref. No.	Part No.	Qty.	Description



Sheet No.: 15

Engine Assembly (Continued)

Ref. No.	Part No.	Qty.	Description	Ref. No.	Part No.	Qty.	Description
1	99-4645	1	Radiator Trim Plate ASM	19	1-643024-03	1	Bracket,Bottle
1:2	65-2690	2	Decal-Surface, Hot	20	321-2	2	Screw-HH
1:3	104-2449	1	Decal-Coolant, Havoline	21	1-303287	3	Tie-Plastic
2	1-643161	1	Cap-Radiator	22	1-643129	1	Hose
3	1-641327	1	Kit-Radiator	23	1-633851	1	Extension-Crankshaft
4	322-1	12	Screw-HH	24	3253-4	3	Washer-Lock
5	3256-23	14	Washer-Flat	25	33014-00	3	Nut-Hex
6	99-4644	1	Fan Mounting Plate ASM	26	1-633869	1	Fan-Pump, Cooling
6:2	1-643253	2	Decal-Fan, Radiator	27	3256-22	3	Washer-Flat
6:3	65-2690	2	Decal-Surface, Hot	28	1-809095	3	Hshcs,1/4-20x1/2
7	1-803067	4	Screw	29	103-0098	1	Shroud,Hydraulic Fan
8	3256-16	8	Washer-Flat	30	3296-2	6	Nut-Lock
9	1-804254	4	Nut	31	3256-14	12	Washer-Flat
10	1-633831	1	Fan	32	3290-500	6	Screw-PPH
11	1-633989	4	Clamp-Hose	33	103-0895-03	1	Shield-LH
12	1-633894	1	Hose-Inlet, Radiator	34	1-633794-03	1	Baffle-Engine Shield, RH
13	1-633895	1	Hose-Return, Radiator	35	321-4	6	Screw-HH
14	1-643164	1	Cap-Tank, Overflow	36	32128-33	6	Nut-HF
15	1-643163	1	Tank-Overflow				
16	1-643131	1	Hose				
17	1-643259	1	Fitting-Elbow				
18	1-513645	1	Bushing-Valve, Fuel				

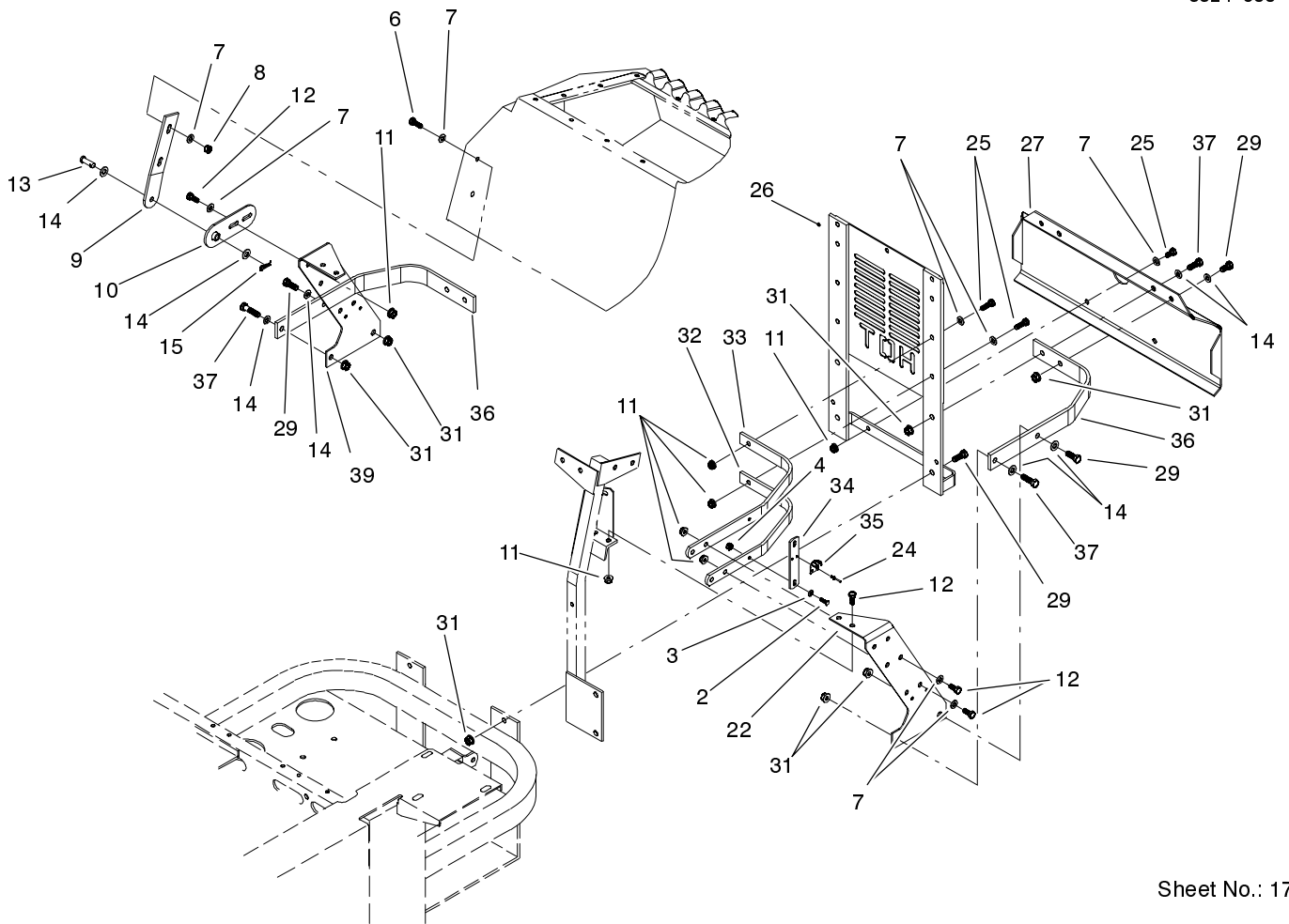


Sheet No.: 16

Rear Hood Assembly

Ref. No.	Part No.	Qty.	Description
1	1-633864-03	1	Screen-Radiator
2	1-803072	17	Rivet-Bulbex
3	3256-14	12	Washer-Flat
5	104-5136	1	Hood
6	322-4	4	Screw-HH
7	1-303435	5	Washer-Spring
11	32128-20	12	Nut-HF
12	322-3	8	Screw-HH
16	1-643106-03	1	Angle-Radiator, RH
17	1-643108-03	1	Angle-Radiator, Bottom
18	1-643107-03	1	Angle-Radiator, Top
19	1-643105-03	1	Angle-Radiator, LH
20	1-643187	2	Seal-Trim
21	1-643186	2	Seal-Trim
23	1-643188	2	Latch-Rubber
24	923786	4	Rivet-Pop
28	3296-42	6	Nut-Lock NI
29	32128-33	2	Nut-HF
30	1-523420	2	Bumper
38	321-9	2	Screw-HH
39	1-643339	1	Decal-Routing, Belt
40	1-632984-03	1	Brace-Radiator, LH
41	1-632985-03	1	Brace-Radiator, RH
42	1-633878-03	1	Crossbar
43	1-643087-03	1	Deflector-Air

Ref. No.	Part No.	Qty.	Description
44	3269-3	4	Rivet-Pop
45	49-2040	2	Screw-Tapping
46	1-643096-03	1	Plenum-Intake, Air
47	1-644276	1	Shield ASM
47:1	1-633462	1	Decal-Important
47:2	1-634308	1	Shield/Lift ASM
47:2:1	1-633298	1	Shield-Engine
47:2:2	1-633300-03	1	Lift-Shield
47:2:3	1-803035	3	Rivet-Pop
47:3	103-0368	1	Decal-Devices, Rotating
48	321-4	4	Screw-HH
49	3256-2	6	Washer-Flat
51	99-4621	1	Decal-Z Master Liquid Cooled

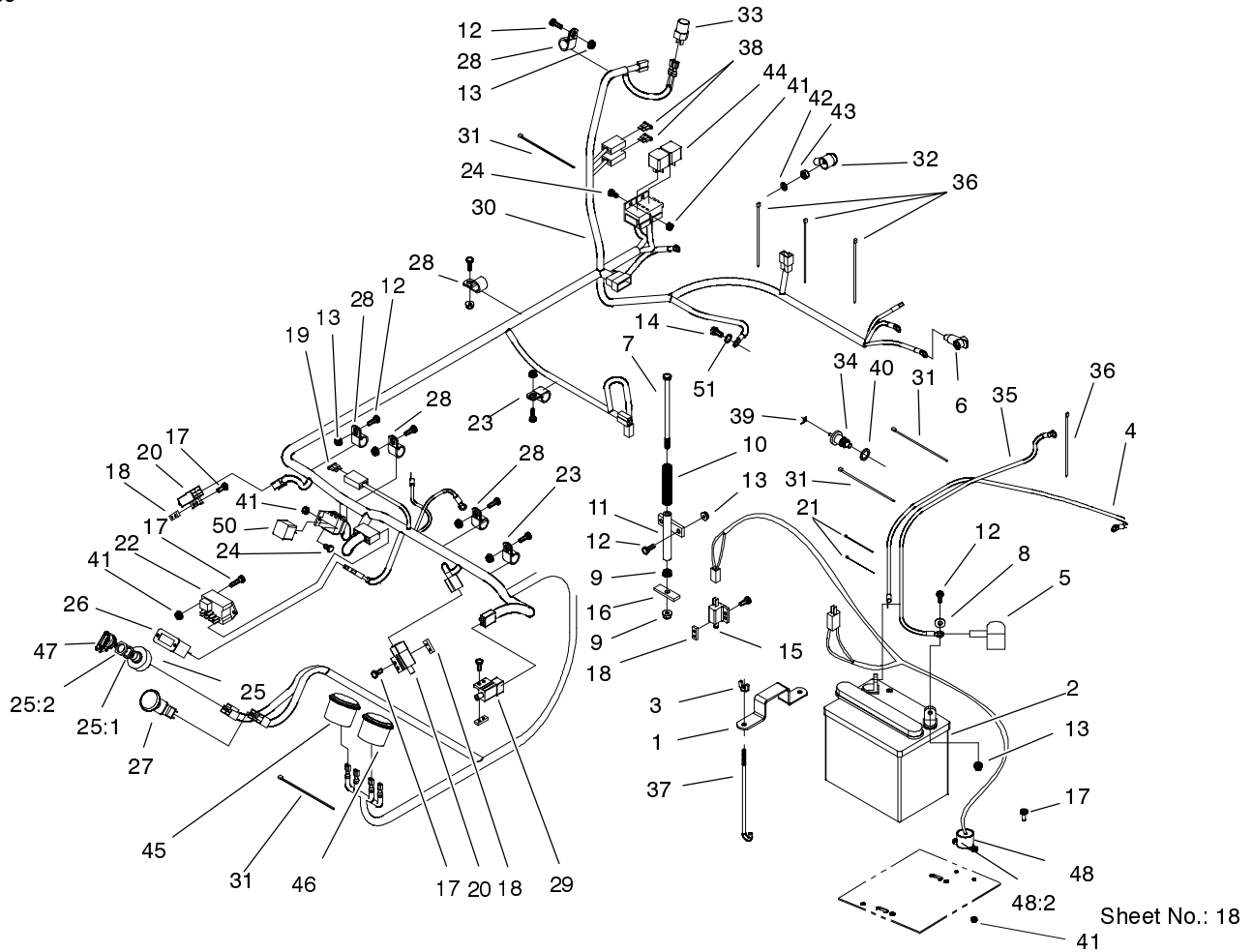


Sheet No.: 17

Rear Bumper Assembly

Ref. No.	Part No.	Qty.	Description
2	1-803069	4	Screw
3	3256-14	4	Washer-Flat
4	3296-2	4	Nut-Lock
6	322-4	4	Screw-HH
7	3256-23	21	Washer-Flat
8	3296-29	4	Nut-Lock
9	1-633885-03	2	Plate-Hinge, Hood
10	1-632986-03	2	Shackle-Hinge
11	32128-20	25	Nut-HF
12	322-3	16	Screw-HH
13	1-808285	2	Pin-Clevis
14	3256-24	12	Washer-Flat
15	1-806003	2	Pin-Cotter, Hair
22	103-0896-03	1	Plate-Side, LH
24	923786	4	Rivet-Pop
25	322-5	9	Screw-HH
26	1-632873-03	1	Mount-Radiator, Rear
27	1-633886-03	1	Guard-Bumper
29	323-6	6	Screw-HH
31	3290-357	10	Nut-Flange, Lock
32	1-633897-03	2	Rib-Top
33	1-633898-03	2	Rib-Bottom
34	1-633877-03	2	Bar-Latch Hook
35	1-643189	2	Keeper-Rubber Latch
36	1-633896-03	2	Bar-Radiator Mount Frame

Ref. No.	Part No.	Qty.	Description
37	323-7	4	Screw-HH
39	103-0897-03	1	Plate-Side, RH

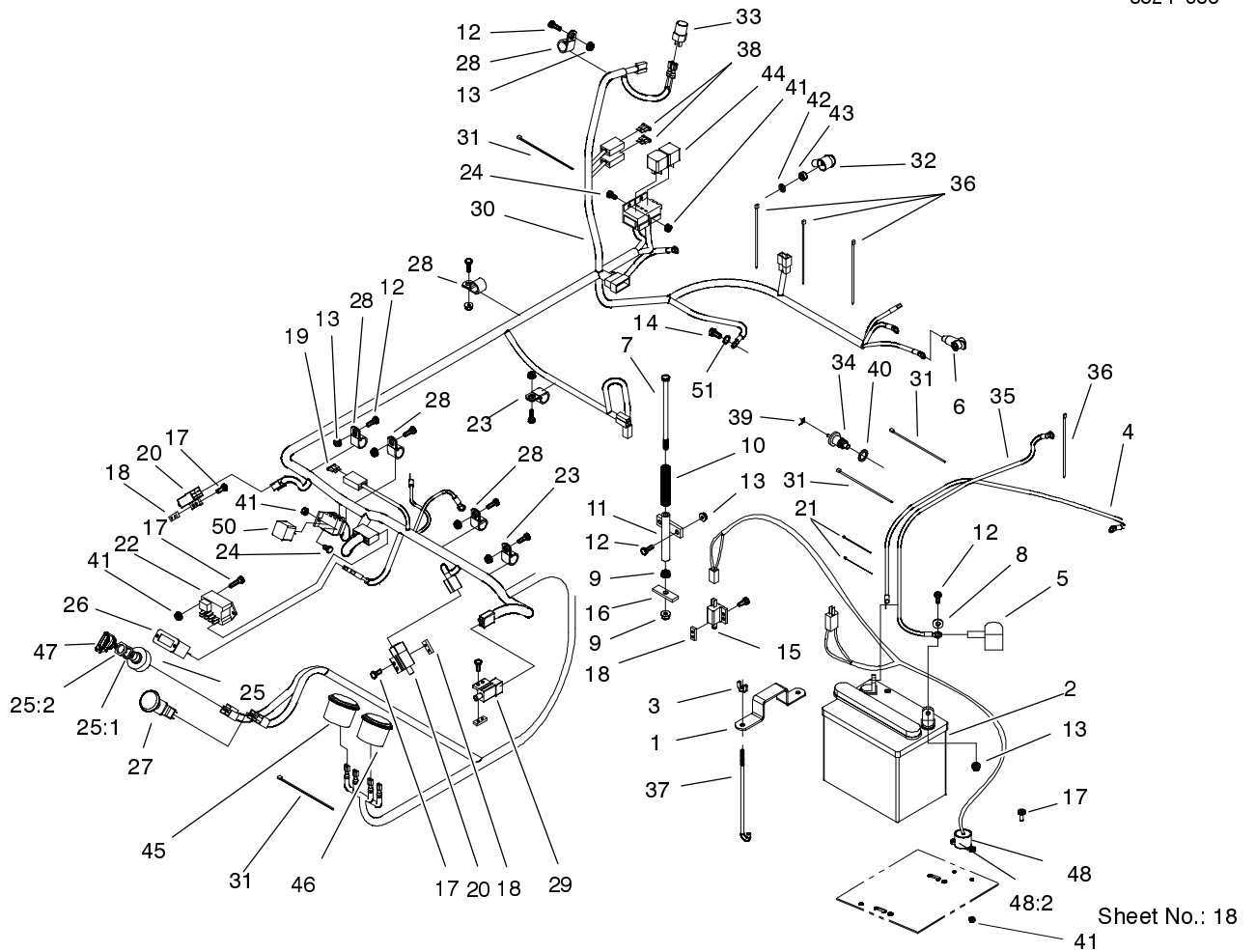


Sheet No.: 18

Electrical Assembly

Ref. No.	Part No.	Qty.	Description
1	1-633652-03	1	Strap-Holddown, Battery
2	1-603479	1	Battery
3	1-543792	2	Wingnut
4	1-633307	1	Wire-Ground
5	1-543391	1	Insulator-Battery
6	1-643178	1	Cap-Insulator, Red
7	1-800282	1	Screw-HH
8	3256-2	2	Washer-Flat
9	32128-20	2	Nut-HF
10	1-523415	1	Spring-Switch, Seat
11	1-522424-03	1	Mount-Spring, Seat
12	321-4	11	Screw-HH
13	32128-33	11	Nut-HF
14	33114-016	1	Screw-HH
15	1-513152	1	Switch-Closed, Normally
16	1-513180	1	Plate-Switch, Seat
17	3290-500	12	Screw-PPH
18	1-633181	4	Plate-Tapped
19	1-816001	1	Fuse-Type, Blade
20	1-633111	2	Switch
21	1-303287	6	Tie-Plastic
22	1-633856	1	Module, Ignition Intrlock
23	1-513762	2	Clip-Loom
24	1-803071	3	Screw

Ref. No.	Part No.	Qty.	Description
25	88-9830	1	Switch-Ignition
25:1	3254-5	1	Washer-Lock, Internal
25:2	218-461	1	Nut-HH
26	1-513374	1	Meter-Hours
27	1-633673	1	Switch-Delta
28	1-633396	5	Clip-Loom
29	1-633110	1	Switch-Brake
30	1-643205	1	Harness-Wiring
31	1-303335	4	Tie-Plastic
32	1-543393	1	Insulator-Solenoid
33	1-633833	1	Switch-Thermal, Fan
34	1-643036	1	Sender Unit-Temperature
35	1-523279	1	Wire-Battery, Positive
36	1-643115	3	Tie-Plastic
37	1-633651	2	Bolt-Holddown
38	1-816003	2	Fuse-Blade Type, 30 Amp
39	1-643145	1	Tab
40	1-643153	1	Washer-Aluminum
41	3296-2	6	Nut-Lock
42	3253-4	1	Washer-Lock
43	33014-00	1	Nut-Hex
44	1-643275	2	Relay
45	1-643037	1	Gauge-Voltmeter
46	1-643021	1	Gauge-Temperature

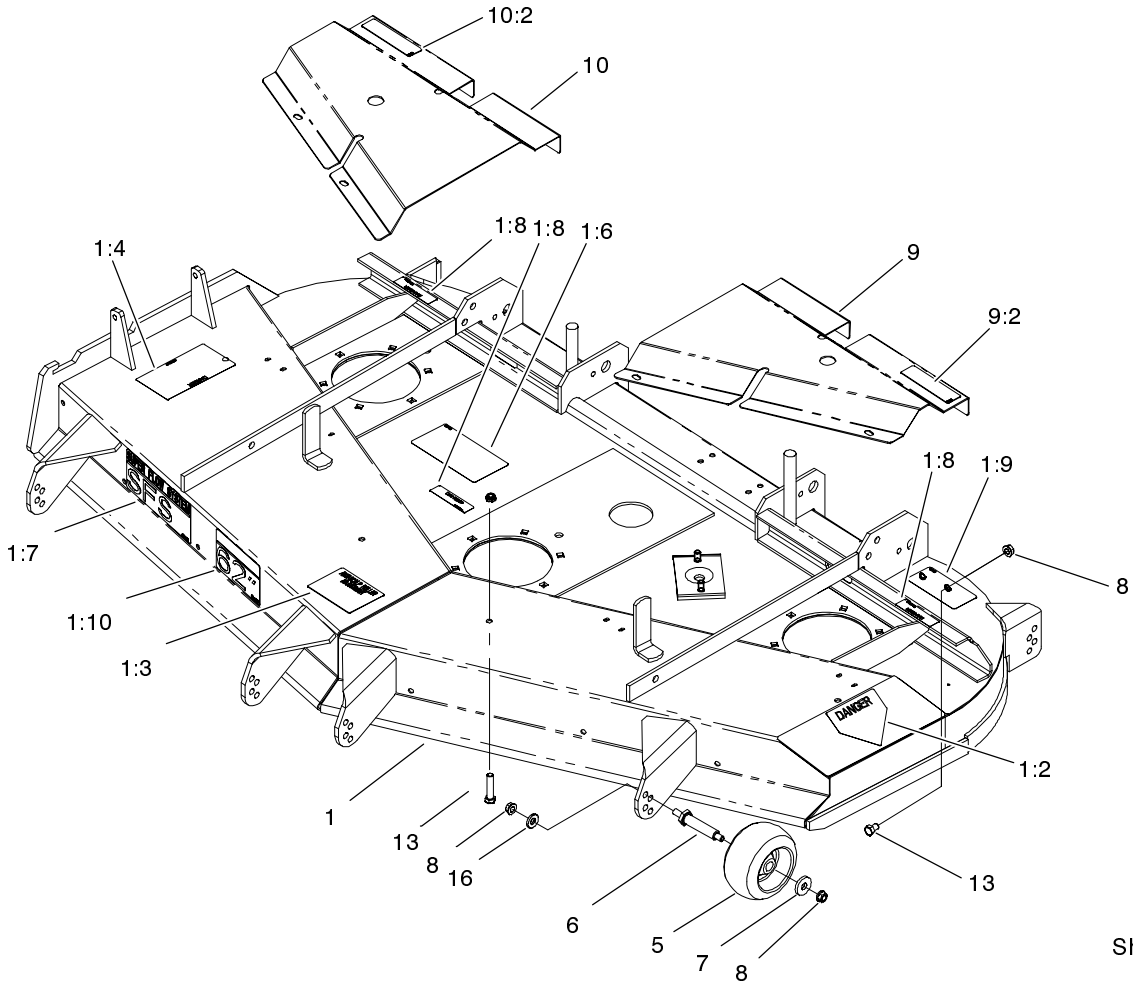


Sheet No.: 18

Electrical Assembly (Continued)

Ref. No.	Part No.	Qty.	Description
47	63-8360	2	Key-Ignition
48	1-644427	1	Tilt Switch ASM *
48:2	1-643401	1	Decal-Switch, Mercury
50	98-7249	1	Relay
51	3256-23	1	Washer-Flat

Ref. No.	Part No.	Qty.	Description

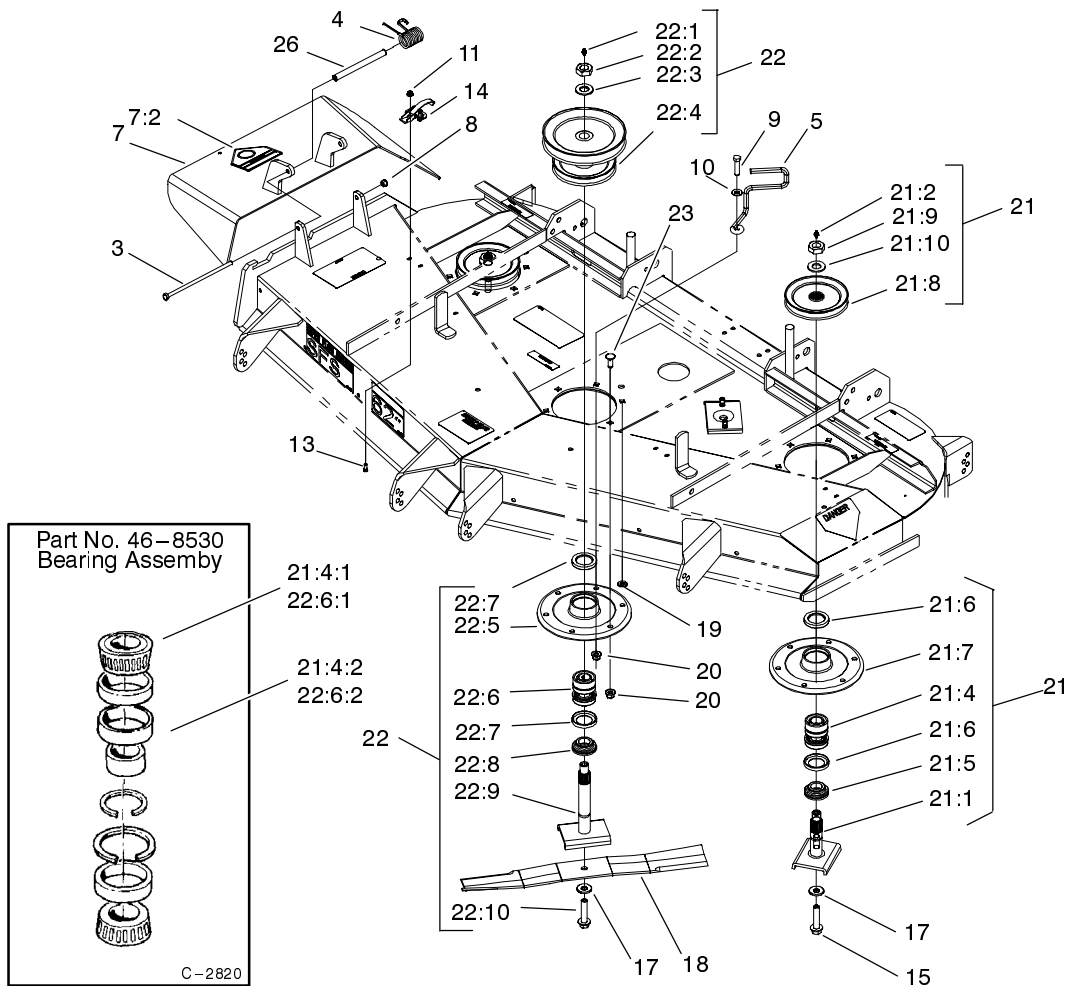


Sheet No.: 32

Deck, Deflector and Roller Assembly

Ref. No.	Part No.	Qty.	Description
1	104-7762	1	Deck ASM
1:2	43-8480	1	Decal-Danger
1:3	98-3798	1	Decal-Wheel, Gage
1:4	66-1340	1	Decal-Danger
1:6	99-4686	1	Decal-Routing, Belt
1:7	99-4619	1	Decal-Sfs
1:8	98-5954	3	Decal-Missing, Cover
1:9	93-7818	1	Decal-Torque, Blade
1:10	99-4620	1	Decal-Deck
5	68-2730	6	Gage-Wheel
6	99-2842	6	Spacer-Wheel
7	1-373034	6	Washer-Swivel
8	3290-357	18	Nut-Flange, Lock
9	98-5955	1	LH Cover ASM
9:2	67-5360	1	Decal-Danger
10	98-5956	1	RH Cover ASM
10:2	67-5360	1	Decal-Danger
13	323-2	8	Screw-HH
16	98-5975	6	Washer-Belleville

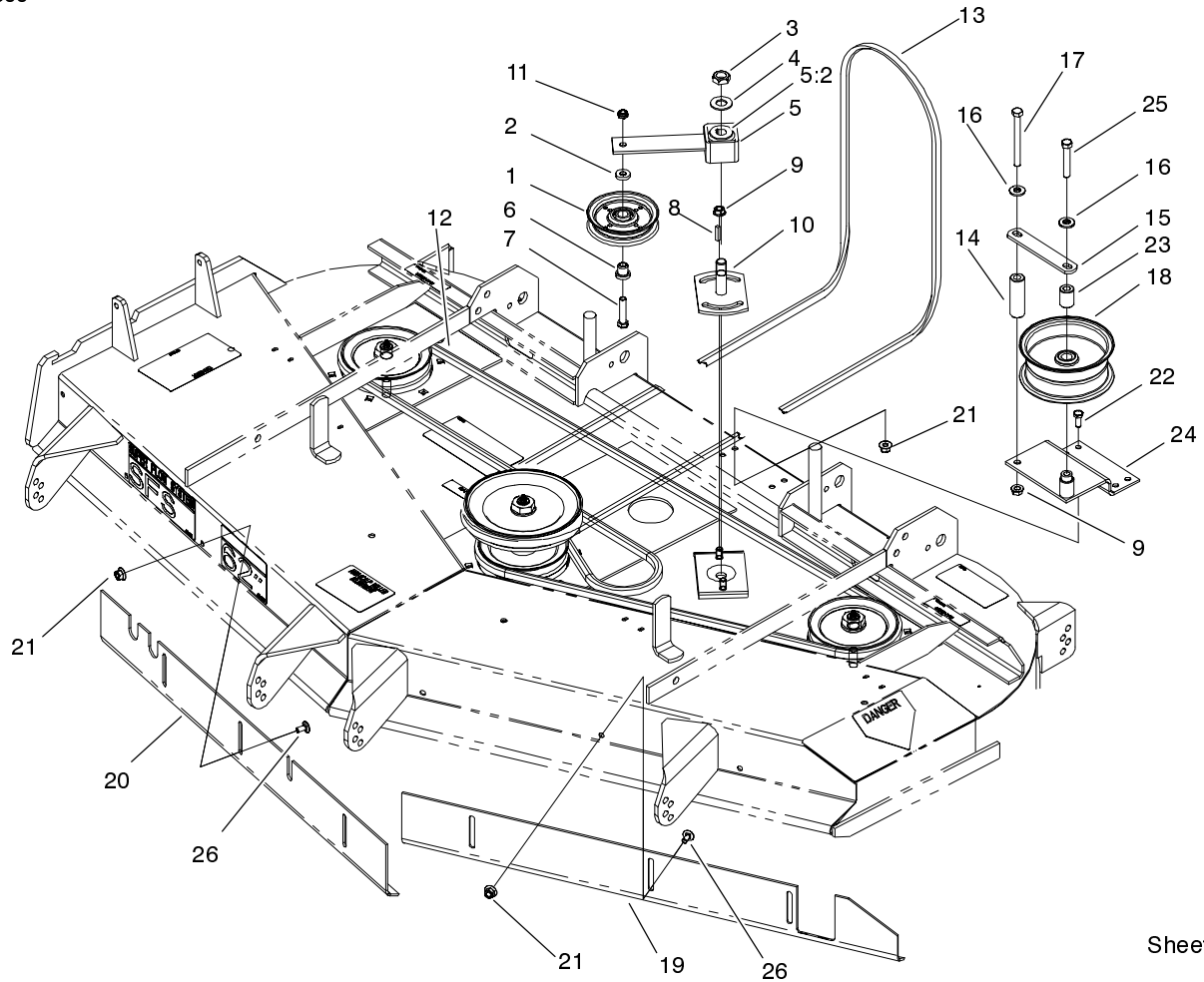
Ref. No.	Part No.	Qty.	Description



Sheet No.: 33

Spindle and Pulley Assembly

Ref. No.	Part No.	Qty.	Description	Ref. No.	Part No.	Qty.	Description
3	322-50	1	Screw-Cap	21:8	99-4614	1	Pulley & Hub
4	104-8554	1	Spring-Torsion	21:9	32146-20	1	Nut-Jam
5	99-8933	1	Guide-Belt	21:10	7-4150	1	Washer-Pinion
7	104-7763	1	Deflector ASM	22	100-4320	1	Middle Spindle ASM
7:2	54-9220	1	Decal-Danger	22:1	302-2	1	Fitting-Grease
8	3296-29	1	Nut-Lock	22:2	32146-20	1	Nut-Jam
9	323-8	1	Screw-HH	22:3	92-5836	1	Washer-Axle
10	3256-3	1	Washer-Flat	22:4	100-4307	1	Pulley-Hub ASM
11	32128-17	8	Nut-Lock, Flange	22:5	61-4160	1	Housing-Spindle
13	3290-321	8	Screw-HWH	22:6	46-8530	1	Bearing ASM
14	249-21	4	Clamp-Slotted	22:6:1	27-0960	1	Bearing ASM
15	92-5816	2	Bolt-Blade	22:6:2	27-5970	1	Spacer-Set, Matched
17	1-513435	3	Washer-Spring	22:7	253-139	2	Seal-Oil
18	44-6250	3	Blade	22:8	27-0950	1	Spacer-Bearing, Spindle
19	3256-24	1	Washer-Flat	22:9	51-3551	1	Shaft-Spindle
20	32128-21	18	Nut-HF	22:10	92-5816	1	Bolt-Blade
21	99-4640	2	Outer Spindle ASM	23	3231-22	17	Screw-CARR
21:1	27-0920	1	Shaft-Spindle	26	104-8555	1	Spacer-Deflector, Mounting
21:2	302-2	1	Fitting-Grease				
21:4	46-8530	1	Bearing ASM				
21:4:1	27-0960	1	Bearing ASM				
21:4:2	27-5970	1	Spacer-Set, Matched				
21:5	27-0950	1	Spacer-Bearing, Spindle				
21:6	253-139	2	Seal-Oil				
21:7	61-4160	1	Housing-Spindle				

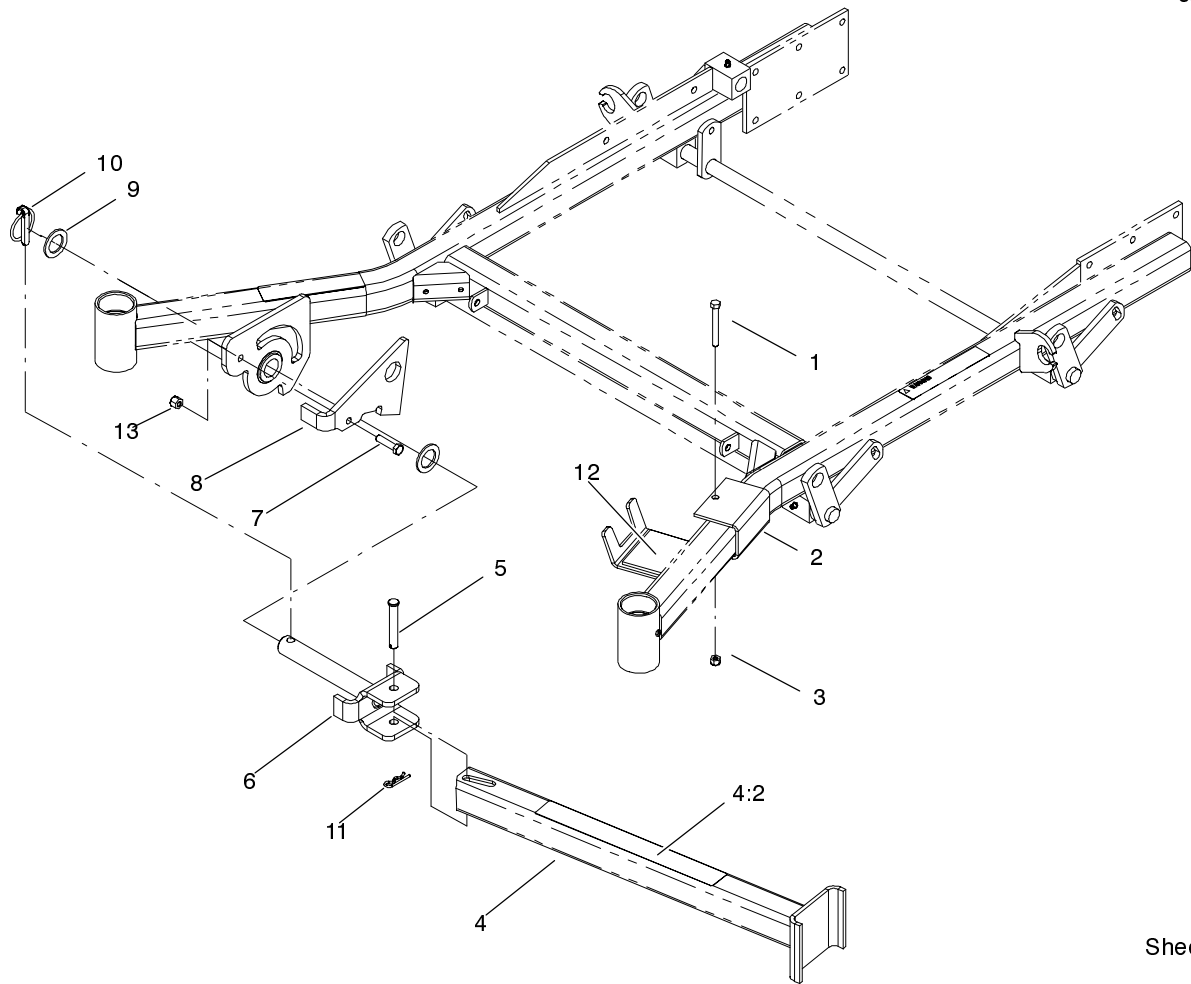


Sheet No.: 34

Belts and Idler Arm Assembly

Ref. No.	Part No.	Qty.	Description
1	65-5940	1	Pulley-Idler
2	7-0081	1	Washer-Flat
3	3296-71	1	Nut-Lock NI
4	3256-27	1	Washer-Flat
5	27-8580	1	Idler Socket & Bushing ASM
5:2	27-8490	1	Bushing-Rubber, Idler
6	65-5950	1	Bushing-Pulley
7	3211-8	1	Screw-HH
8	5-1077	1	Key-Square
9	3290-357	3	Nut-Flange, Lock
10	44-6301	1	Plate-Idler, LH
11	3296-5	1	Nut-Lock NI
12	44-6260	1	V-Belt
13	99-4647	1	V-Belt-Drive, Deck
14	99-4659	1	Spacer-Bracket
15	1-653189	1	Plate-Guide, Belt
16	98-5975	2	Washer-Belleville
17	323-42	1	Screw-HH
18	1-413099	1	Pulley-Idler
19	99-2833-03	1	Baffle-Front, LH
20	99-2834-03	1	Baffle-Front, RH
21	32128-20	10	Nut-HF
22	322-3	4	Screw-HH
23	1-653190	1	Spacer
24	99-4684-01	1	Bracket-Pulley

Ref. No.	Part No.	Qty.	Description
25	323-11	1	Screw-HH
26	3230-18	6	Screw-CARR

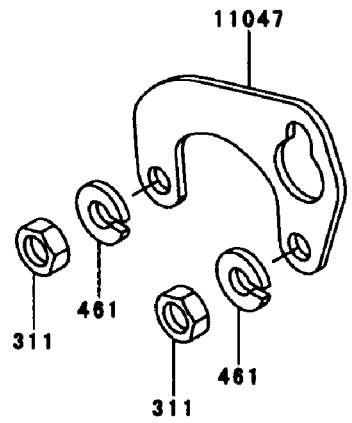
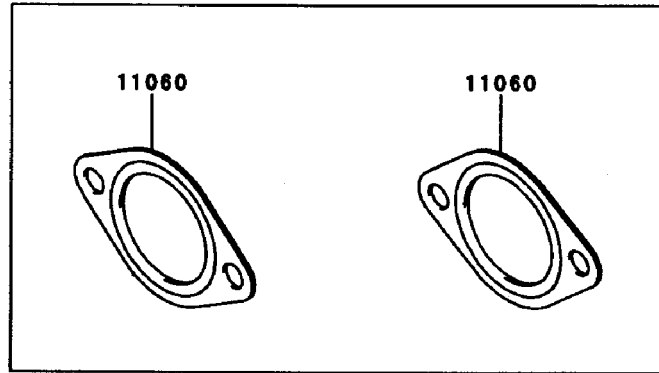


Sheet No.: 51

Stand Assembly

Ref. No.	Part No.	Qty.	Description
1	322-13	1	Screw-HH
2	100-9699-01	1	Bracket-Cradle
3	3296-29	1	Nut-Lock
4	104-7804	1	Leg ASM W/ Decal
4:2	104-7758	1	Decal-Z Stand
5	283-55	1	Pin-Clevis
6	100-9692-01	1	Pivot Pin ASM
7	323-8	1	Screw-HH
8	100-9686-01	1	Bracket-Latch
9	3-6781	2	Washer-Thrust
10	283-71	1	Pin-Lynch
11	3290-355	1	Pin-Hair
12	104-7765	1	Cushion-Rubber
13	3296-39	1	Nut-Lock, NI

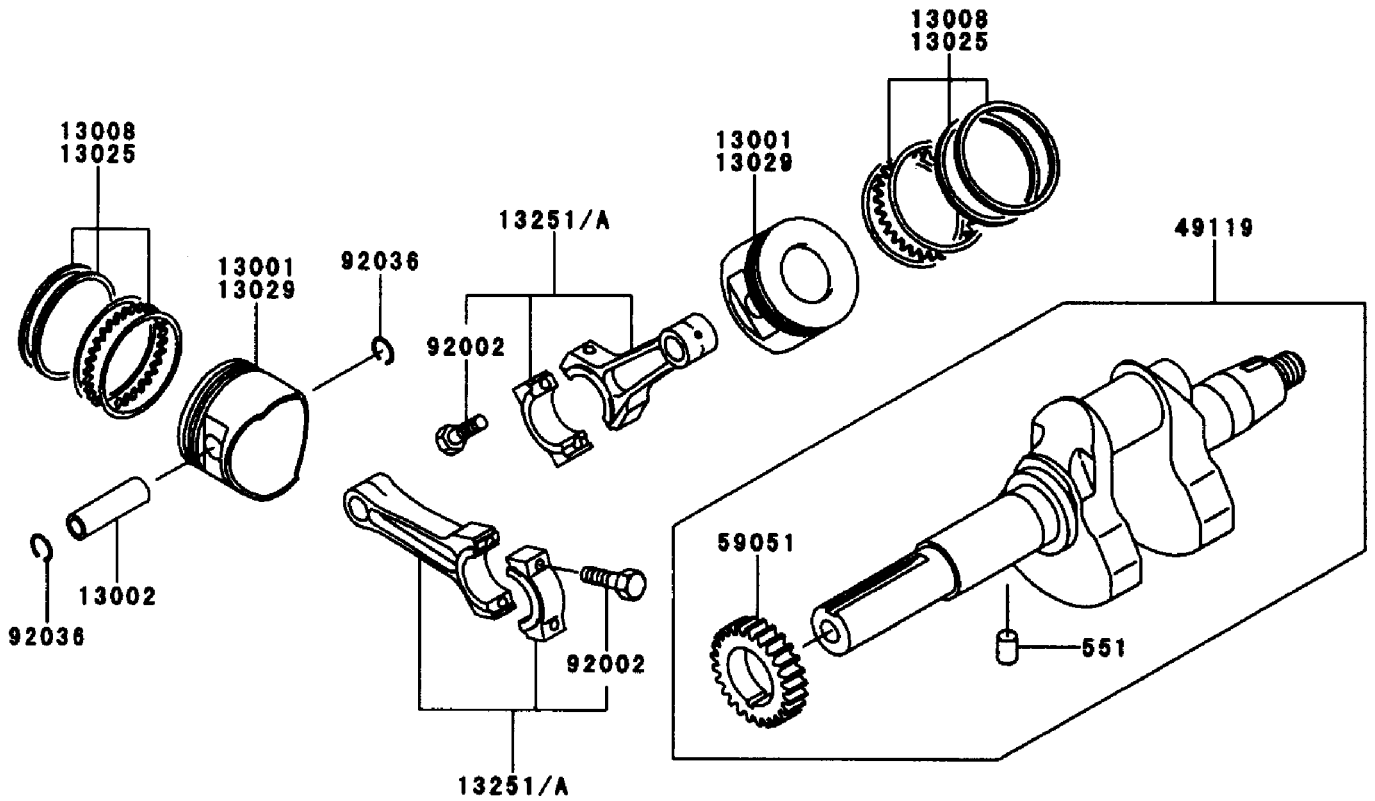
Ref. No.	Part No.	Qty.	Description



Air Filter/Muffler - Kawasaki FD661D AS-03

Ref. No.	Part No.	Qty.	Description
11047	11047-2057-9H	1	Bracket
11060	11060-2448	2	Gasket
311	311G0600	2	Nut-Hex
461	461F0600	2	Washer

Ref. No.	Part No.	Qty.	Description

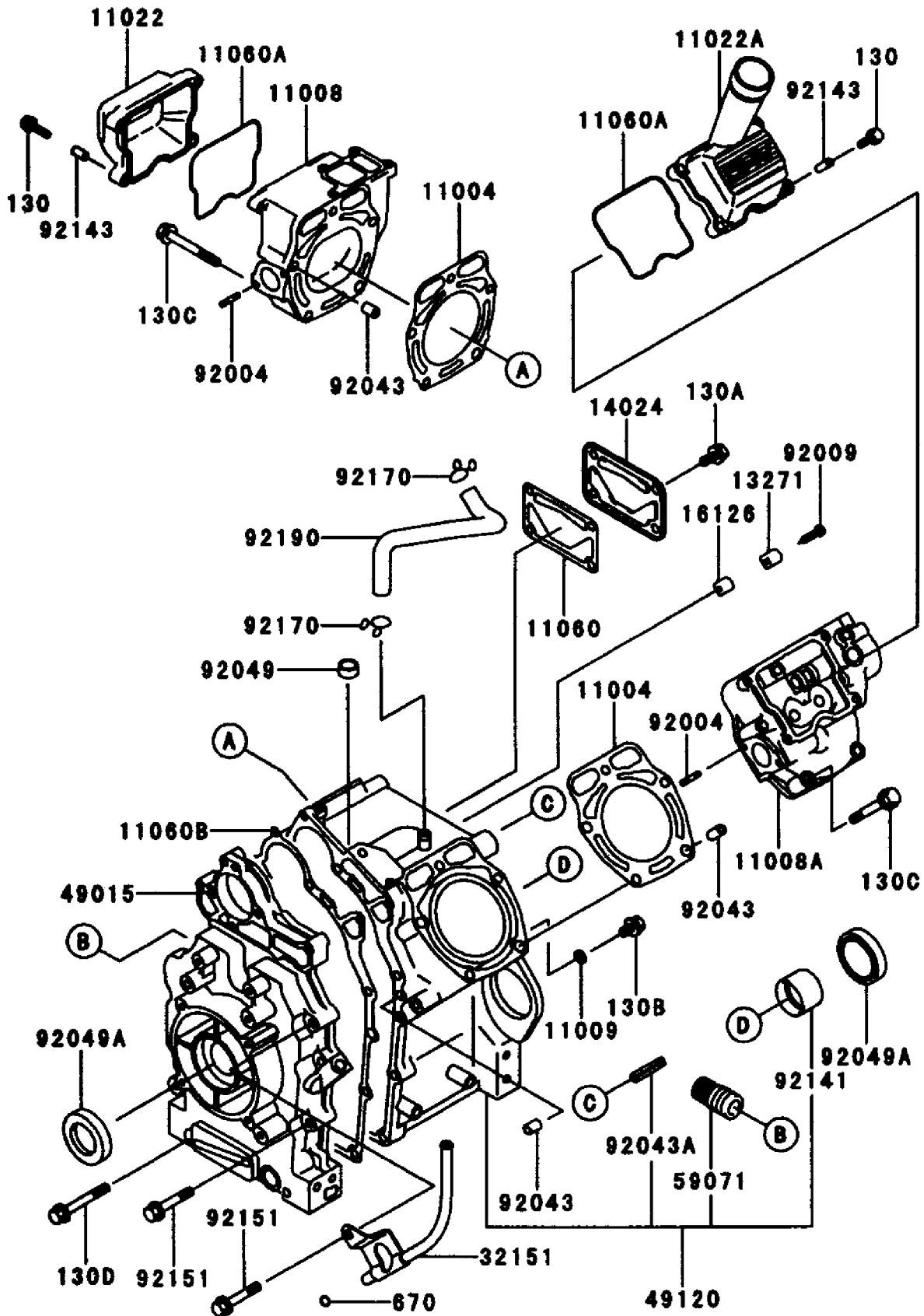


Piston/Crankshaft - Kawasaki FD661D AS-03

Ref. No.	Part No.	Qty.	Description
13001	13001-2131	2	Piston-Engine
13002	13002-1013	2	Pin-Piston
13008	13008-6025	2	Ring-Set-Piston
13025	13025-6008	AR	Ring-Set-Piston L,0.50
13029	13029-2105	AR	Piston-Engine L,0.50
13251	13251-6022	2	Rod-Assy-Connecting
13251A	13251-6026	AR	Rod-Assy-Connecting, U/S=0.50
49119	49119-2130	1	Crankshaft-Assy
59051	59051-2112	1	Gear-Spur
92002	92002-2053	4	Bolt
92036	92036-021	4	Ring-Snap
551	551A0408	1	Pin-Dowel

Ref. No.	Part No.	Qty.	Description

Cylinder/Crankcase - Kawasaki FD661D AS-03

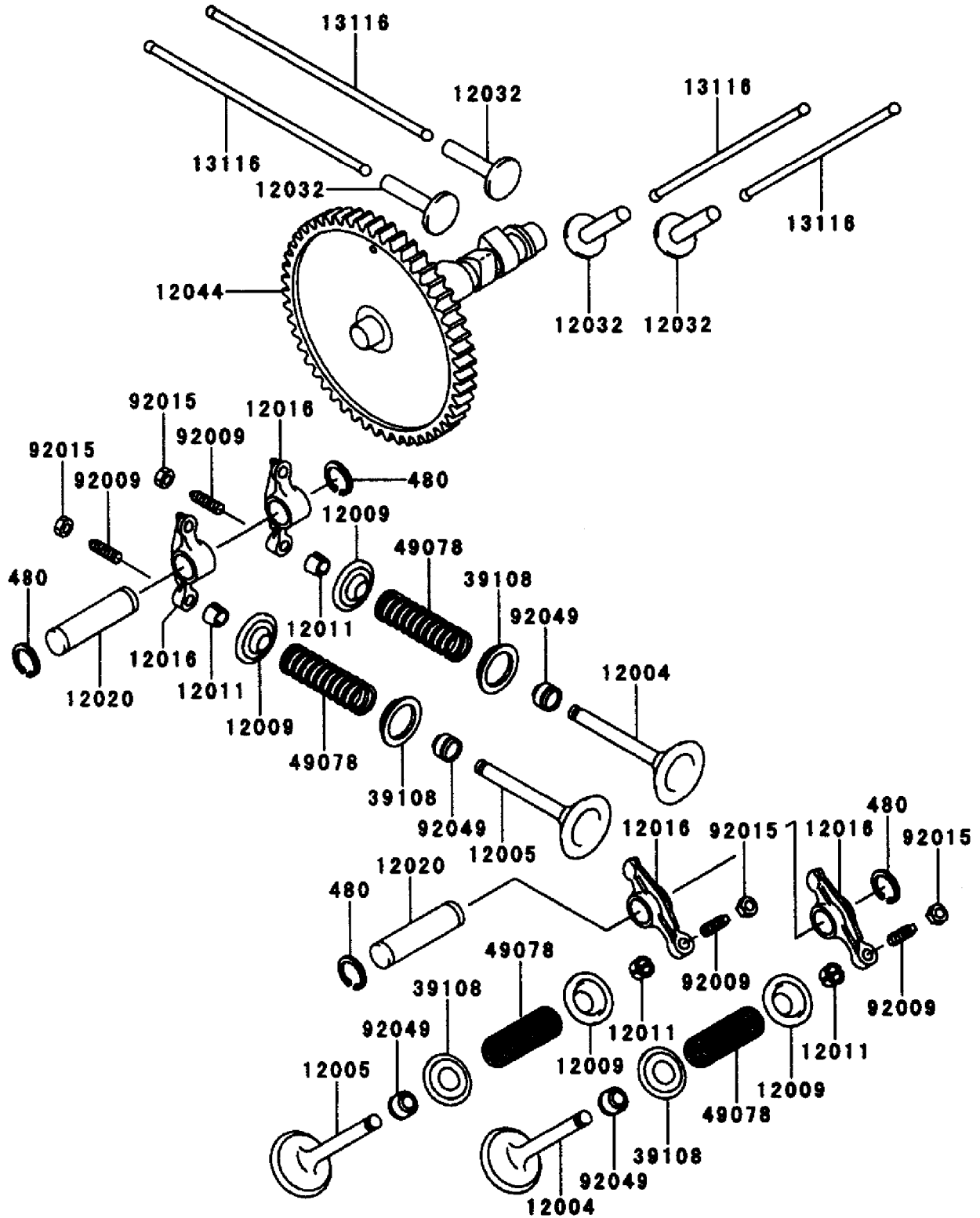


Cylinder/Crankcase - Kawasaki FD661D AS-03

Ref. No.	Part No.	Qty.	Description
11004	11004-2107	2	Gasket-Head
11008	11008-2135	1	Head-Comp-Cylinder
11008A	11008-6036	1	Head-Comp-Cylinder
11009	11009-3028	2	Gasket
11022	11022-2056	1	Case-Rocker
11022A	11022-2063	1	Case-Rocker
11060	11060-2089	1	Gasket
11060A	11060-2332	2	Gasket, Rocker Case
11060B	11060-2449	1	Gasket, Crankcase Cover
13271	13271-2054	1	Plate
14024	14024-2292	1	Cover
16126	16126-2146	1	Valve
32151	32151-2032-9H	1	Pipe, Oil Guage
49015	49015-6204	1	Cover-Crankcase
49120	49120-2291	1	Crankcase-Comp
59071	59071-2079	1	Joint
92004	92004-2142	4	Stud
92009	92009-2308	1	Screw
92043	92043-1037	6	Pin
92043A	92043-2227	1	Pin
92049	92049-2097	1	Seal-Oil
92049A	92049-2110	1	Seal-Oil
92141	92141-2110	1	Bearing-Plane
92143	92143-2010	8	Collar
92151	92151-2123	6	Bolt,8x45
92170	92170-2002	2	Clamp
92190	92190-2146	1	Tube
130	130B0625	8	Bolt-Flanged
130A	130B0816	4	Bolt-Flanged
130B	130C0812	2	Bolt-Flanged
130C	130G0865	10	Bolt-Flanged
130D	130T0860	2	Bolt-Flanged
670	670B2010	1	O Ring

Ref. No.	Part No.	Qty.	Description

Valve/Camshaft - Kawasaki FD661D AS-03

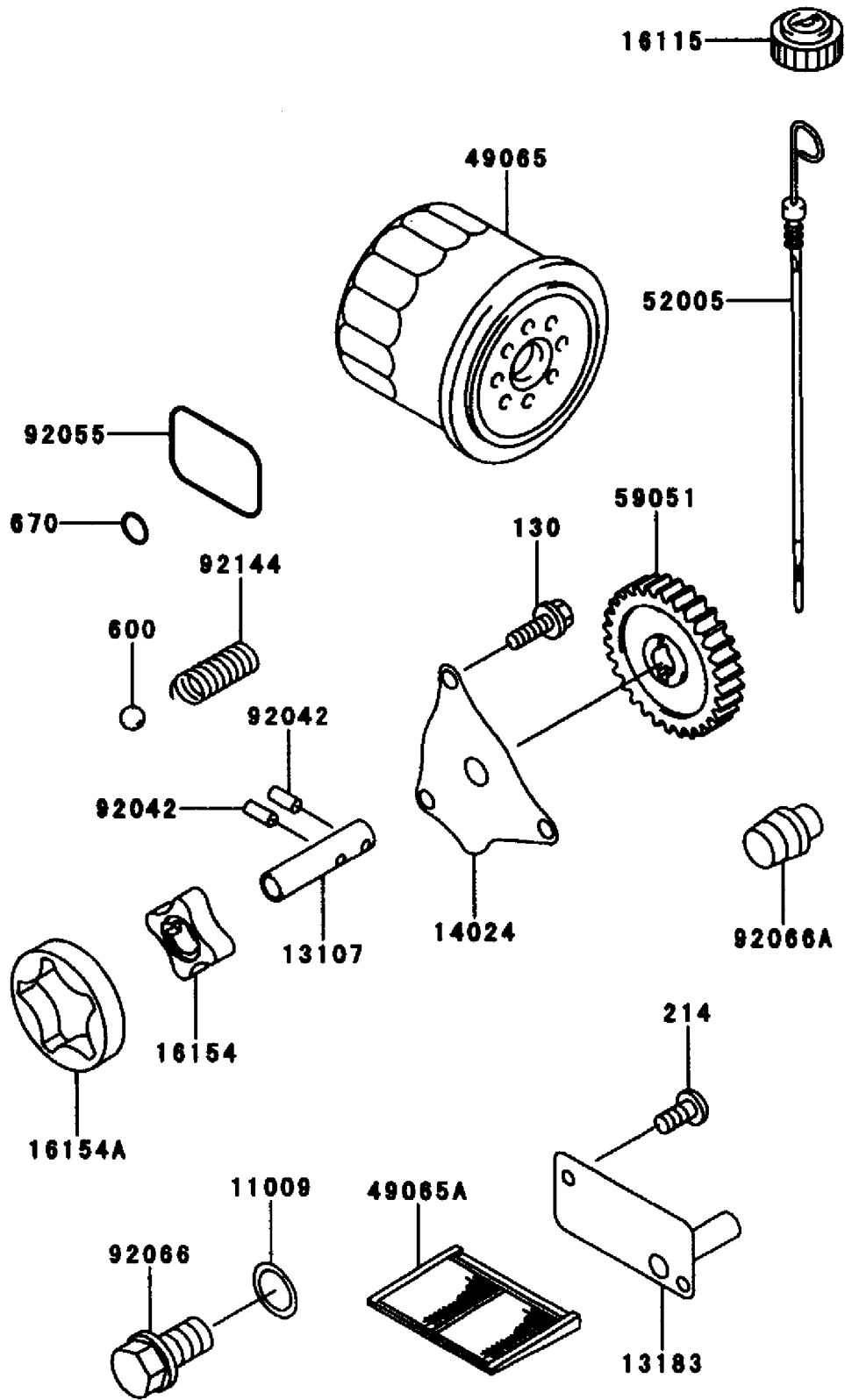


Valve/Camshaft - Kawasaki FD661D AS-03

Ref. No.	Part No.	Qty.	Description
12004	12004-2104	2	Valve-Intake
12005	12005-2093	2	Valve-Exhaust
12009	12009-2067	4	Retainer-Valve Spring
12011	12011-2056	8	Collet
12016	12016-2056	4	Arm-Rocker
12020	12020-2059	2	Shaft-Rocker
12032	12032-2064	4	Tappet
12044	12044-2239	1	Camshaft-Valve
13116	13116-2057	4	Rod-Push
39108	39108-2057	4	Retainer-Spring
49078	49078-2082	4	Spring-Engine Valve
92009	92009-1109	4	Screw
92015	92015-1137	4	Nut
92049	92049-2109	4	Seal-Oil
480	480J1200	4	Circlip

Ref. No.	Part No.	Qty.	Description

Lubrication-Equipment - Kawasaki FD661D AS-03

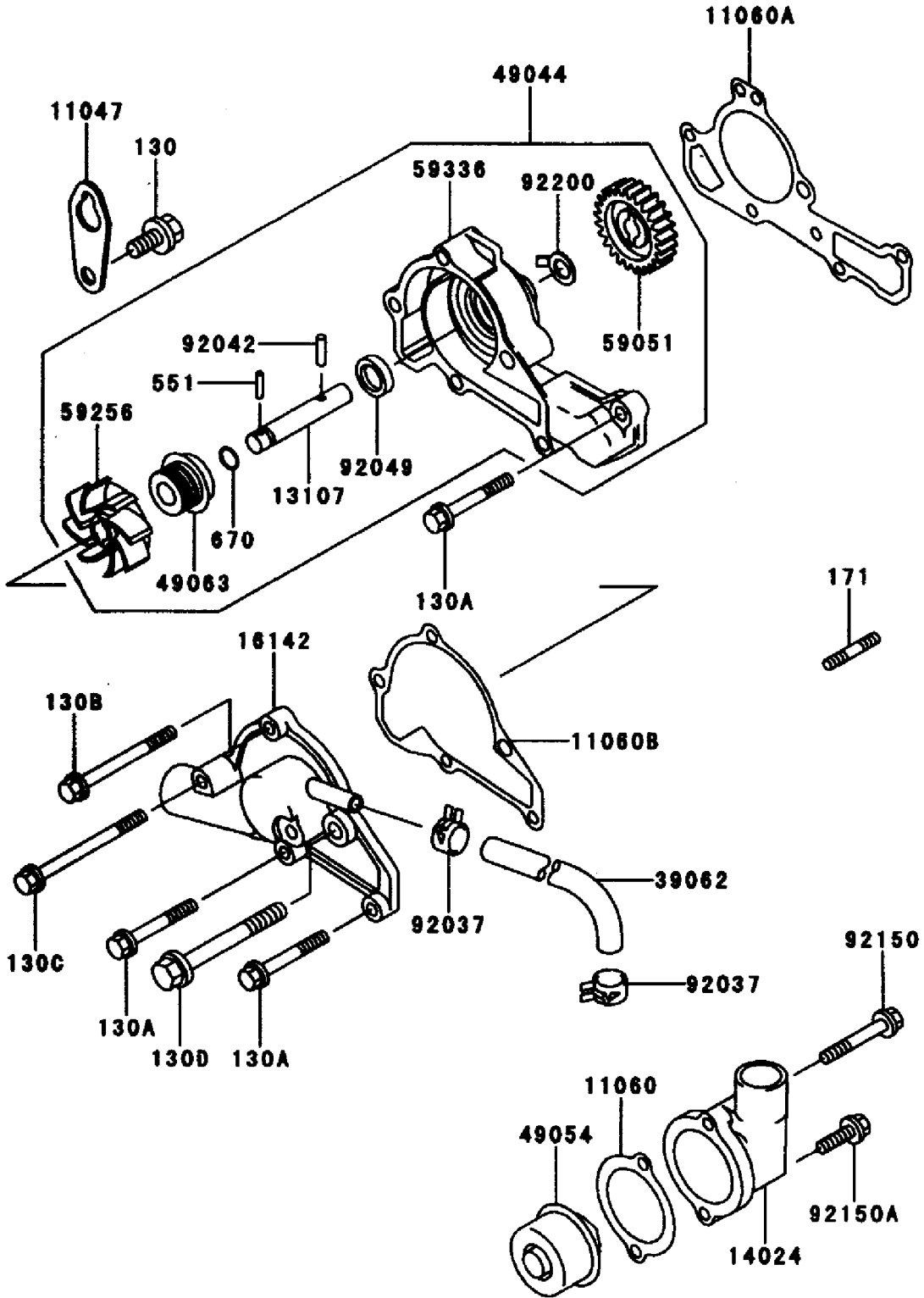


Lubrication-Equipment - Kawasaki FD661D AS-03

Ref. No.	Part No.	Qty.	Description
11009	11009-2566	1	Gasket,Drain Plug
13107	13107-2099	1	Shaft-Oil Pump
13183	13183-2419	1	Plate
14024	14024-2113	1	Cover,Oil Pump
16115	16115-2090	1	Cap-Oil Filler
16154	16154-2053	1	Rotor-Pump,In
16154A	16154-2054	1	Rotor-Pump,Out
49065	49065-2071	1	Filter-Oil
49065A	49065-2072	1	Filter-Oil
52005	52005-2122	1	Guage
59051	59051-2114	1	Gear-Spur
92042	92042-014	2	Pin
92055	92055-2086	1	Ring-O
92066	92066-2099	1	Plug,Drain
92066A	92066-2235	1	Plug
92144	92144-2053	1	Spring
130	130B0614	3	Bolt-Flanged
214	214B0512	2	Screw-Pan
600	600A1300	1	Ball-Steel
670	670B2011	1	O-Ring

Ref. No.	Part No.	Qty.	Description

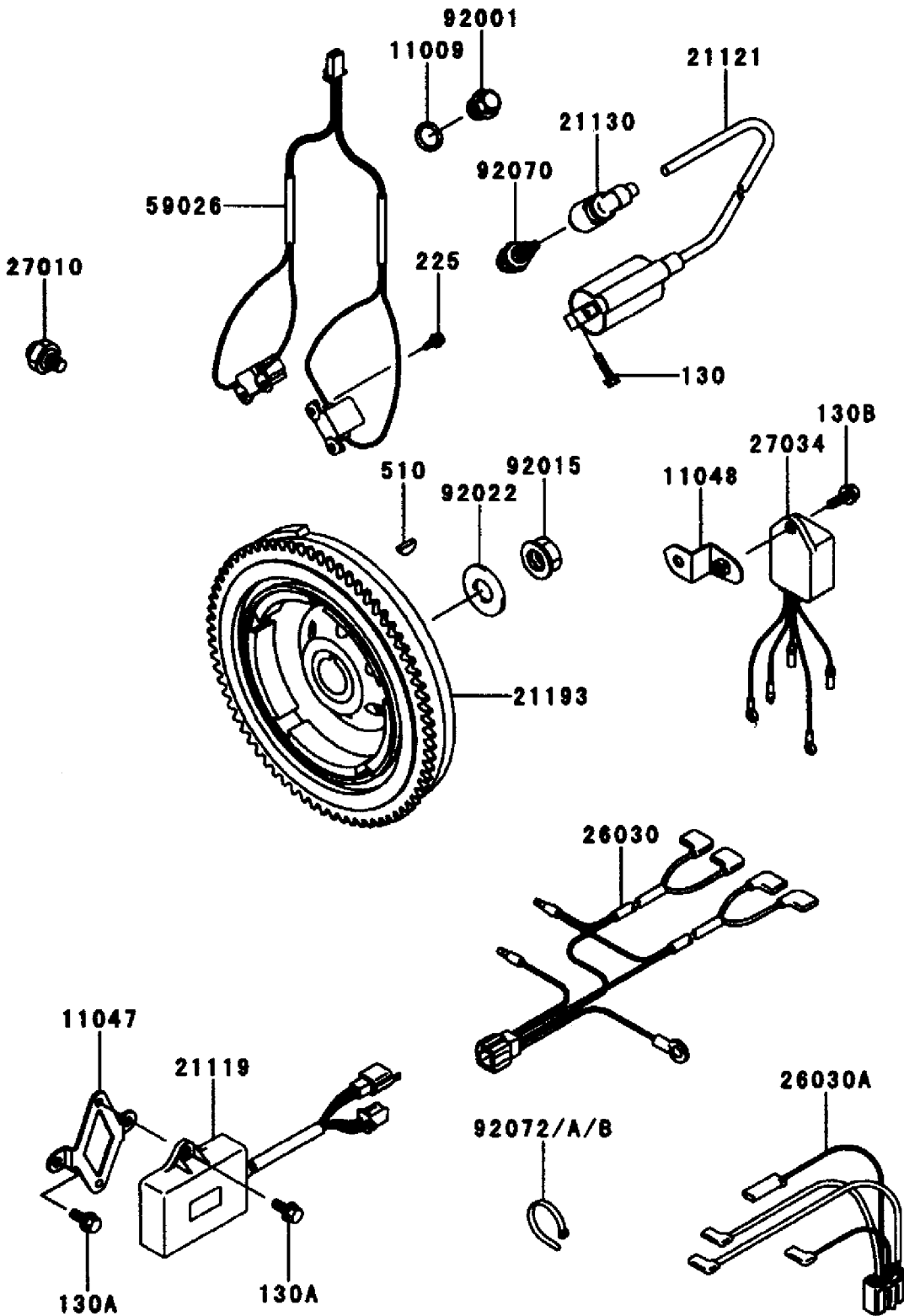
Cooling-Equipment - Kawasaki FD661D AS-03



Cooling-Equipment - Kawasaki FD661D AS-03

Ref. No.	Part No.	Qty.	Description	Ref. No.	Part No.	Qty.	Description
11047	11047-2056-9H	1	Bracket				
11060	11060-2084	1	Gasket,Thermostat Cover				
11060A	11060-2450	1	Gasket,Pump Case				
11060B	11060-2451	1	Gasket,Pump Cover				
13107	13107-2097	1	Shaft,Impeller				
14024	14024-2293	1	Cover, Thermostat				
16142	16142-2069	1	Cover-Pump				
39062	39062-2051	1	Hose-Cooling, 7.5x13.5x305				
49044	49044-2058	1	Pump-Water				
49054	49054-2056	1	Thermostat				
49063	49063-2056	1	Seal-Mechanical				
59051	59051-2113	1	Gear-Spur				
59256	59256-2057	1	Impeller				
59336	59336-2052	1	Case-Pump				
92037	92037-2082	2	Clamp				
92042	92042-014	1	Pin				
92049	92049-2111	1	Seal-Oil				
92150	92150-2230	1	Bolt,6x40				
92150A	92150-2231	1	Bolt,6x20				
92200	92200-2044	1	Washer				
130	130B0816	1	Bolt-Flanged				
130A	130T0645	3	Bolt-Flanged				
130B	130T0665	1	Bolt-Flanged				
130C	130T0675	1	Bolt-Flanged				
130D	130T0870	1	Bolt-Flanged				
171	171G0818	3	Bolt-Stud				
551	551A0314	1	Pin-Dowel				
670	670B1507	1	O Ring				

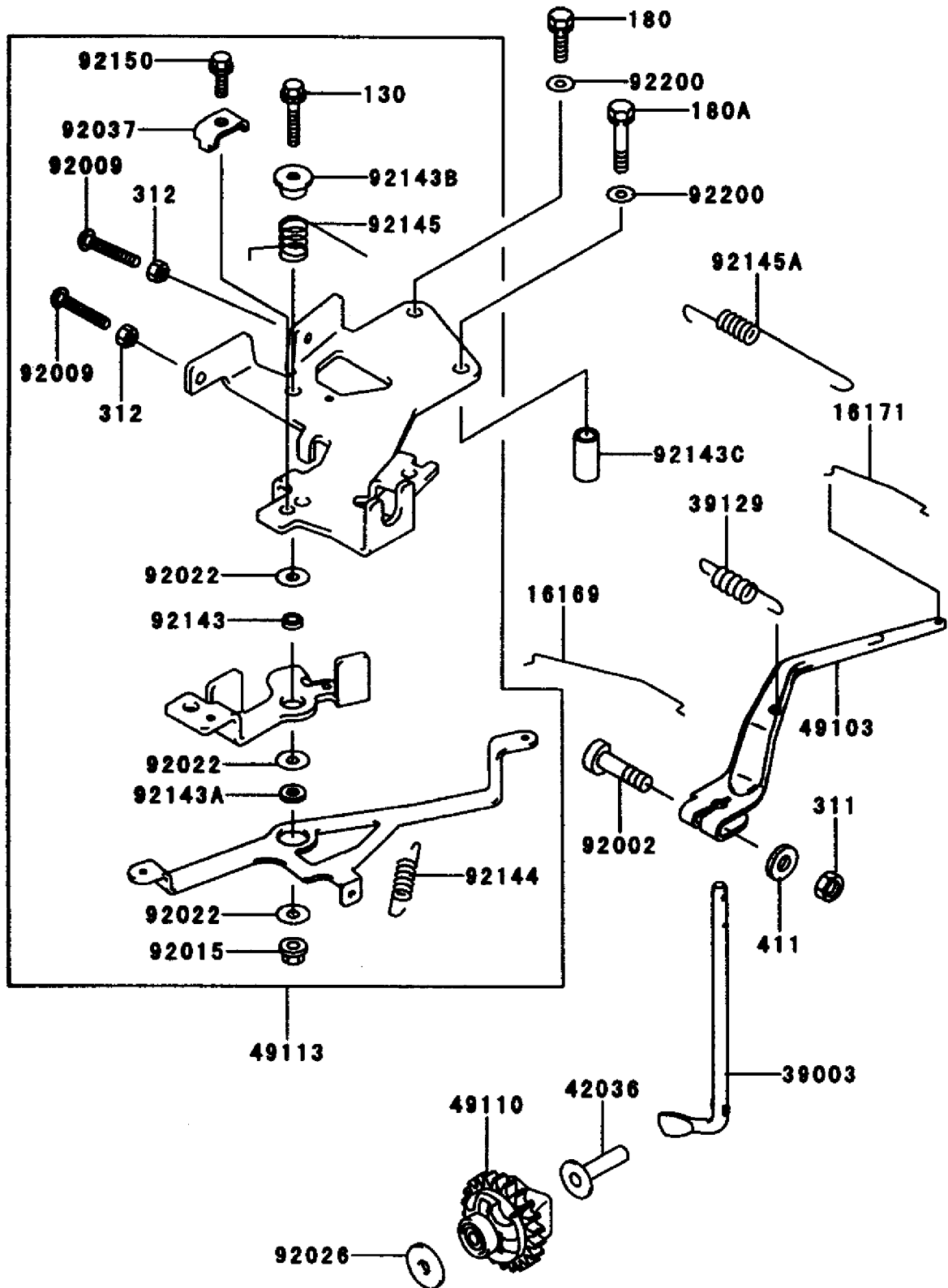
Electric-Equipment - Kawasaki FD661D AS-03



Electric-Equipment - Kawasaki FD661D AS-03

Ref. No.	Part No.	Qty.	Description	Ref. No.	Part No.	Qty.	Description
11009	11009-2766	1	Gasket				
11047	11047-2036-9H	1	Bracket				
11048	11048-2008	1	Bracket				
21119	21119-2157	1	Igniter				
21121	21121-2083	2	Coil-Ignition				
21130	21130-2060	2	Cap-Spark Plug				
21193	21193-2149	1	Flywheel-Assy				
26030	26030-2167	1	Harness				
26030A	26030-2267	1	Harness				
27010	27010-7001	1	Switch				
27034	27034-2056	1	Relay				
59026	59026-2054	1	Coil-Pulsing				
92001	92001-1114	1	Bolt				
92015	92015-2167	1	Nut				
92022	92022-2245	1	Washer				
92070	92070-2060	2	Plug-Spark,BMR6A (NGK), Solid				
92072	92072-1195	2	Band				
92072A	92072-1237	2	Band				
92072B	92072-2003	2	Band				
130	130B0520	4	Bolt-Flanged				
130A	130B0614	4	Bolt-Flanged				
130B	130B0616	1	Bolt-Flanged				
225	225B0414	4	Screw-Pan-Wsp-Cros				
510	510A5100	1	Key-Woodruff				

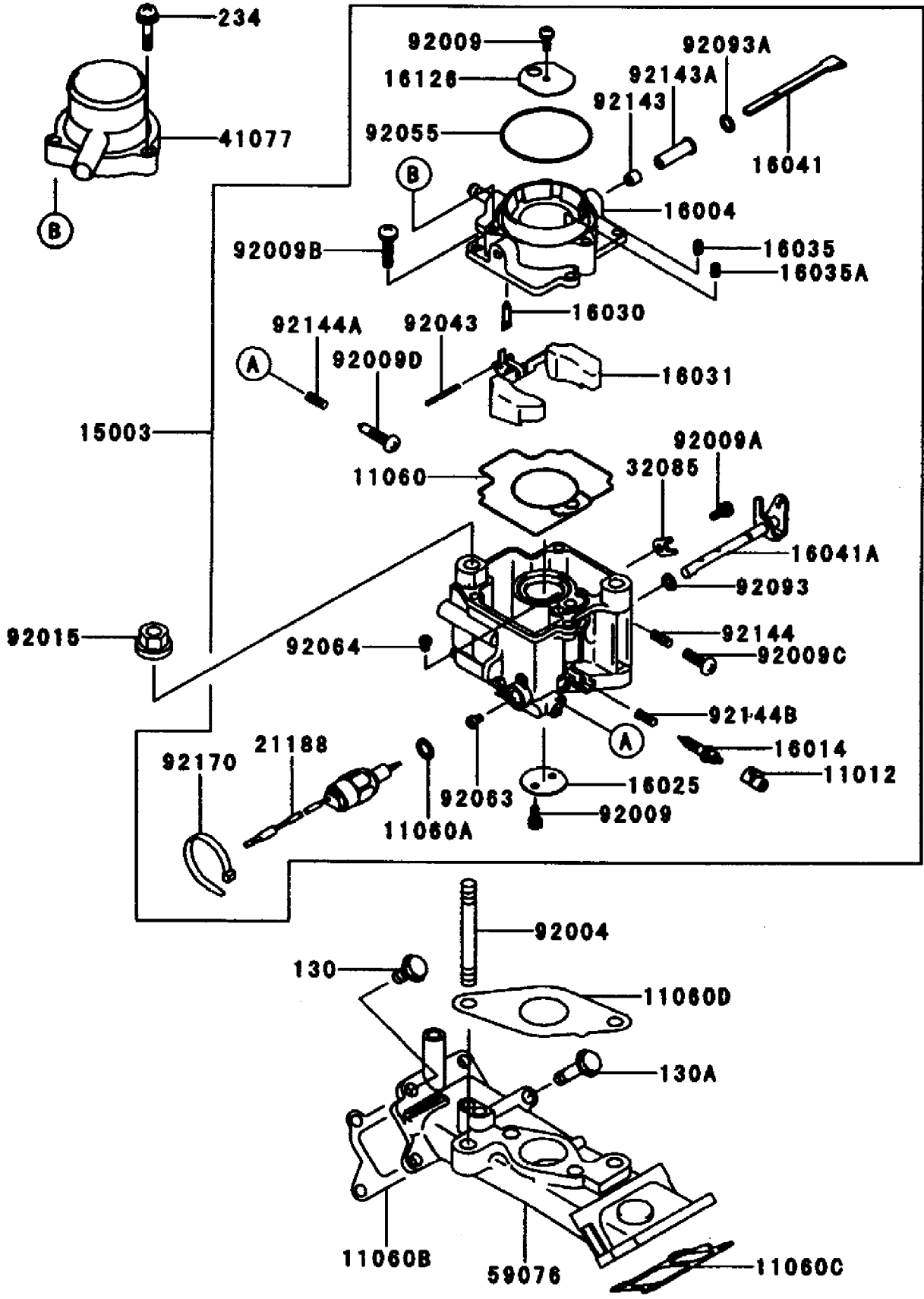
Control-Equipment - Kawasaki FD661D AS-03



Control-Equipment - Kawasaki FD661D AS-03

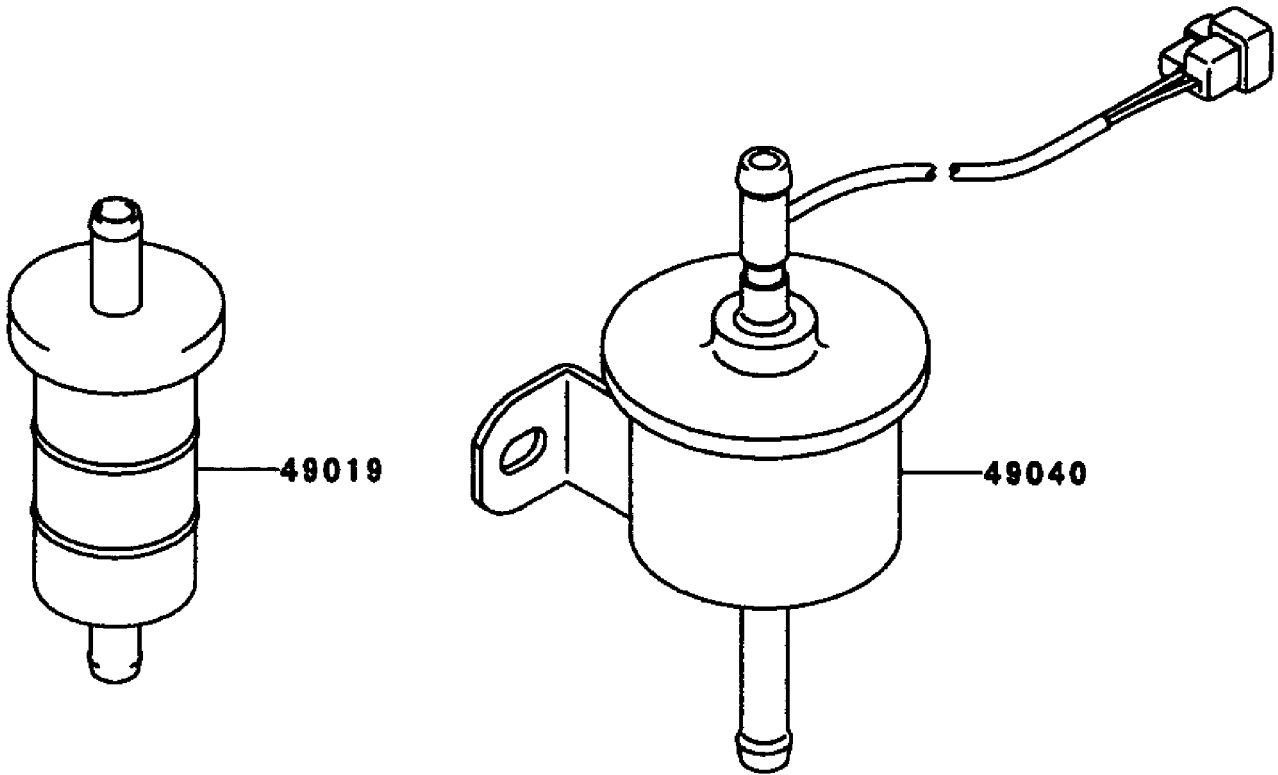
Ref. No.	Part No.	Qty.	Description	Ref. No.	Part No.	Qty.	Description
16169	16169-2092	1	Link-Choke				
16171	16171-2065	1	Link				
39003	39003-2083	1	Arm-Pivot				
39129	39129-2081	1	Spring-Governor				
42036	42036-2060	1	Sleeve				
49103	49103-2141	1	Arm-Governor				
49110	49110-2091	1	Governor-Assy				
49113	49113-2165	1	Panel-Comp-Control				
92002	92002-2269	1	Bolt				
92009	92009-2381	2	Screw,5x30				
92015	92015-1339	1	Nut				
92022	92022-2372	3	Washer,6x19x1.2				
92026	92200-2036	1	Spacer				
92037	92037-2209	2	Clamp				
92143	92143-1596	1	Collar,6.2x10x3.4				
92143A	92143-2135	1	Collar,6x13x2.3				
92143B	92143-2148	1	Collar				
92143C	92143-2200	1	Collar,6.8x10x20.5				
92144	92144-2052	1	Spring				
92145	92145-2058	1	Spring				
92145A	92145-2062	1	Spring				
92150	92150-2182	2	Bolt,5x18				
92200	92200-2070	2	Washer				
130	130B0635	2	Bolt-Flanged				
180	180B0616	1	Bolt-Flanged				
180A	180B0635	1	Bolt-Upset-Ws				
311	311B0600	1	Nut-Hex				
312	312B0500	2	Nut-Hex				
411	411B0600	1	Washer-Plain				

Carburetor - Kawasaki FD661D AS-03



Carburetor - Kawasaki FD661D AS-03

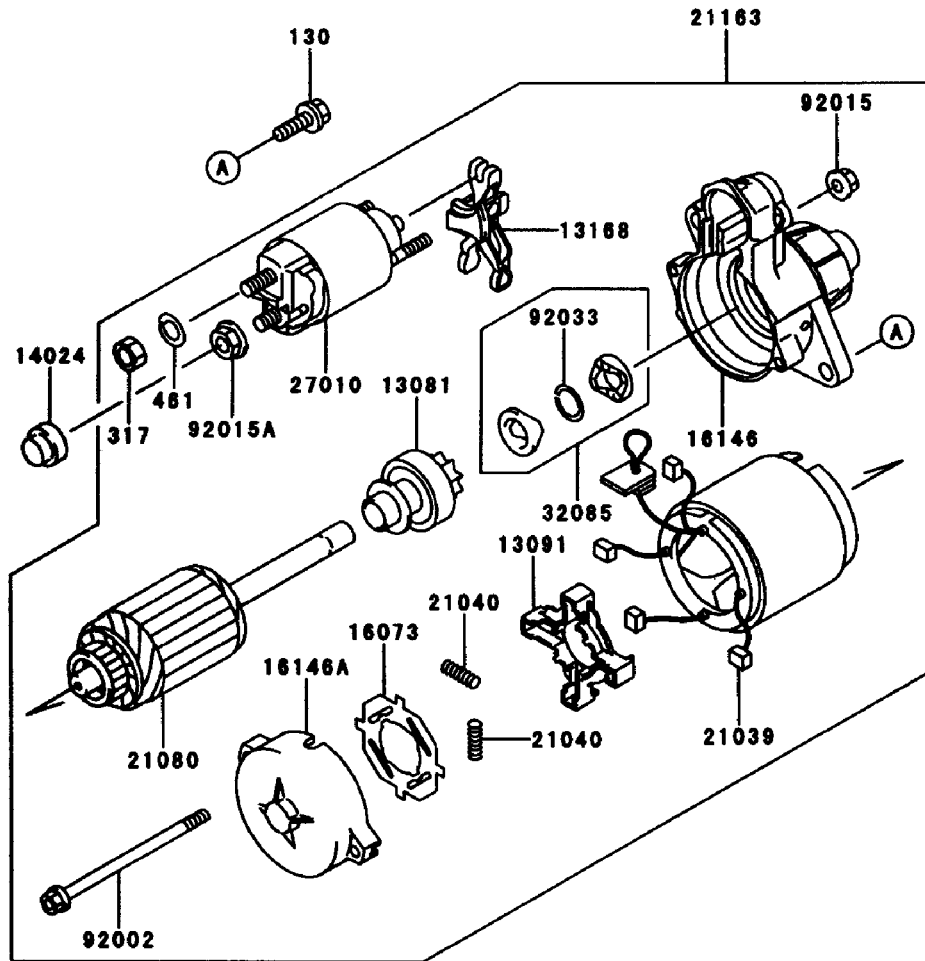
Ref. No.	Part No.	Qty.	Description	Ref. No.	Part No.	Qty.	Description
11012	11012-2381	1	Cap				
11060	11060-2072	1	Gasket				
11060A	11060-2073	1	Gasket				
11060B	11060-2087	1	Gasket,Intake Manifold				
11060C	11060-2088	1	Gasket,Intake Manifold				
11060D	11060-2090	1	Gasket,Carburetor				
15003	15003-2728	1	Carburetor-Assy				
16004	16004-2051	1	Cap-Chamber				
16014	16014-2077	1	Screw-Pilot Air				
16025	16025-2197	1	Valve-Throttle				
16030	16030-2089	1	Valve-Float				
16031	16031-2071	1	Float				
16035	16035-2080	1	Jet-Air				
16035A	16035-2082	1	Jet-Air				
16041	16041-2218	1	Shaft-Carburetor, Choke				
16041A	16041-2251	1	Shaft-Carburetor				
16126	16126-2185	1	Valve,Choke				
21188	21188-2006	1	Solenoid				
32085	32085-2089	1	Stopper				
41077	41077-2063	1	Adapter				
59076	59076-2061	1	Manifold-Intake				
92004	92004-2143	2	Stud				
92009	92009-2330	3	Screw,3x5.5				
92009A	92009-2331	1	Screw				
92009B	92009-2332	4	Screw				
92009C	92009-2333	1	Screw				
92009D	92009-2334	1	Screw				
92015	92015-1143	2	Nut				
92043	92043-2196	1	Pin				
92055	92055-2175	1	Ring-O,49.4mm				
92063	92063-2384	1	Jet-Main,#106				
92064	92064-2129	1	Jet-Pilot,#42				
92093	92093-2092	1	Seal				
92093A	92093-2093	1	Seal				
92143	92143-2191	1	Collar				
92143A	92143-2192	1	Collar				
92144	92144-2306	1	Spring				
92144A	92144-2307	1	Spring				
92144B	92144-2397	1	Spring				
92170	92170-2098	1	Clamp				
130	130B0620	5	Bolt-Flanged				
130A	130B0645	3	Bolt-Flanged				
234	234B0525	3	Screw-Pan-Wsp				



Fuel-Tank/Fuel-Valve - Kawasaki FD661D AS-03

Ref. No.	Part No.	Qty.	Description
49019	49019-1055	1	Filter-Fuel
49040	49040-2065	1	Pump-Fuel

Ref. No.	Part No.	Qty.	Description
----------	----------	------	-------------



Starter - Kawasaki FD661D AS-03

Ref. No.	Part No.	Qty.	Description
13081	13081-2108	1	Clutch-Assy
13091	13091-2068	1	Holder,Brush
13168	13168-2131	1	Lever,Shift
14024	14024-2205	1	Cover
16073	16073-2098	1	Insulator
16146	16146-2186	1	Cover-Assy
16146A	16146-2187	1	Cover-Assy
21039	21039-2059	4	Brush
21040	21040-2052	4	Spring-Brush
21080	21080-2054	1	Armature
21163	21163-2101	1	Starter-Electric
27010	27010-2122	1	Switch
32085	32085-2097	1	Stopper
92002	92002-2277	2	Bolt
92015	92015-2146	2	Nut
92015A	92015-2147	1	Nut
92033	92033-2081	1	Ring-Snap
130	130B0830	2	Bolt-Flanged
317	317B0800	1	Nut-Hex-Small
461	461F0800	1	Washer-Spring

Ref. No.	Part No.	Qty.	Description

Maintenance Record

Date								

Maintenance Record

Date								

