



Form No. 3437-587 Rev B

Count on it.

Parts Catalog

Engine Conversion Kit

**Subaru and Kawasaki Powered Walk-Behind
Greensmaster® 1000 Mower**

Model No. 139-5638



Ordering Replacement Parts

To order replacement parts, please supply the part number, the quantity, and the description of each part desired.

Understanding Reference Numbers

Each identified part in an illustration has a reference number. The reference number for a part also appears in the parts list, along with other information about the part.

This catalog uses two special reference number formats, one to indicate parts in a service assembly and another to indicate the quantity of a given part in an illustration.

Service Assembly Reference Numbers

Parts in service assemblies have reference numbers in the form a:b. The a represents the reference number of the entire service assembly and the b represents a sequential number unique to each part within the service assembly.

For example, a wheel assembly might be identified by reference number 6, the tire by 6:1, the valve by 6:2, and the wheel by 6:3. When you order the assembly identified by reference number 6, you receive all parts identified by reference numbers 6:1, 6:2, and 6:3. However, you may also order any part individually. Reference numbers of this type appear in illustration and in parts lists.

Reference Numbers Indicating Quantity

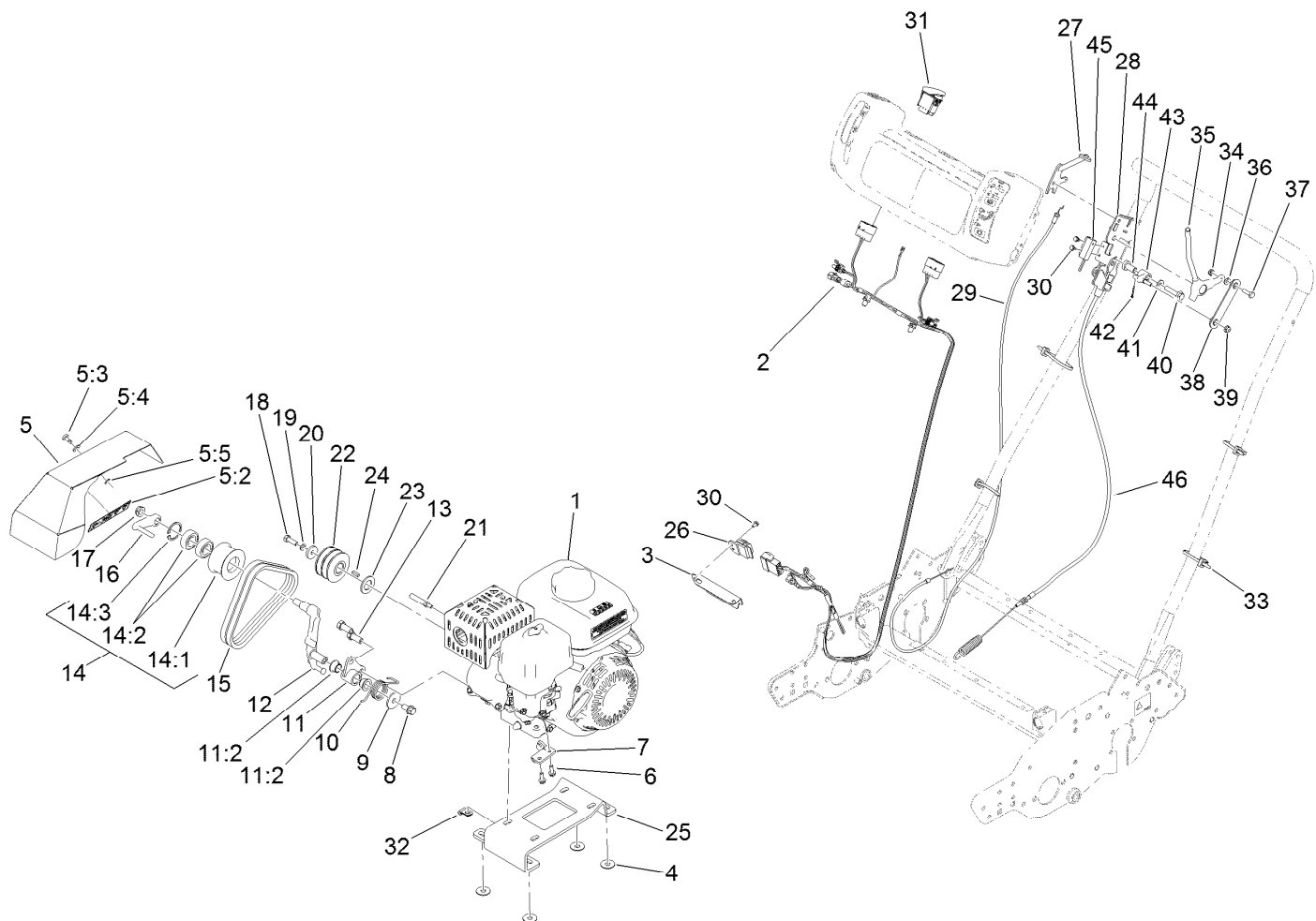
In an illustration, if a reference number indicates more than one part, the reference number has the form nX y. The n represents the quantity of the part, the X is the multiplication symbol, and the y represents the reference number.

For example, in an illustration, the reference number 2X 37 means that two of the parts identified by reference number 37 are indicated.

Contents

Engine Conversion Kit Assembly No. 139-5638 4

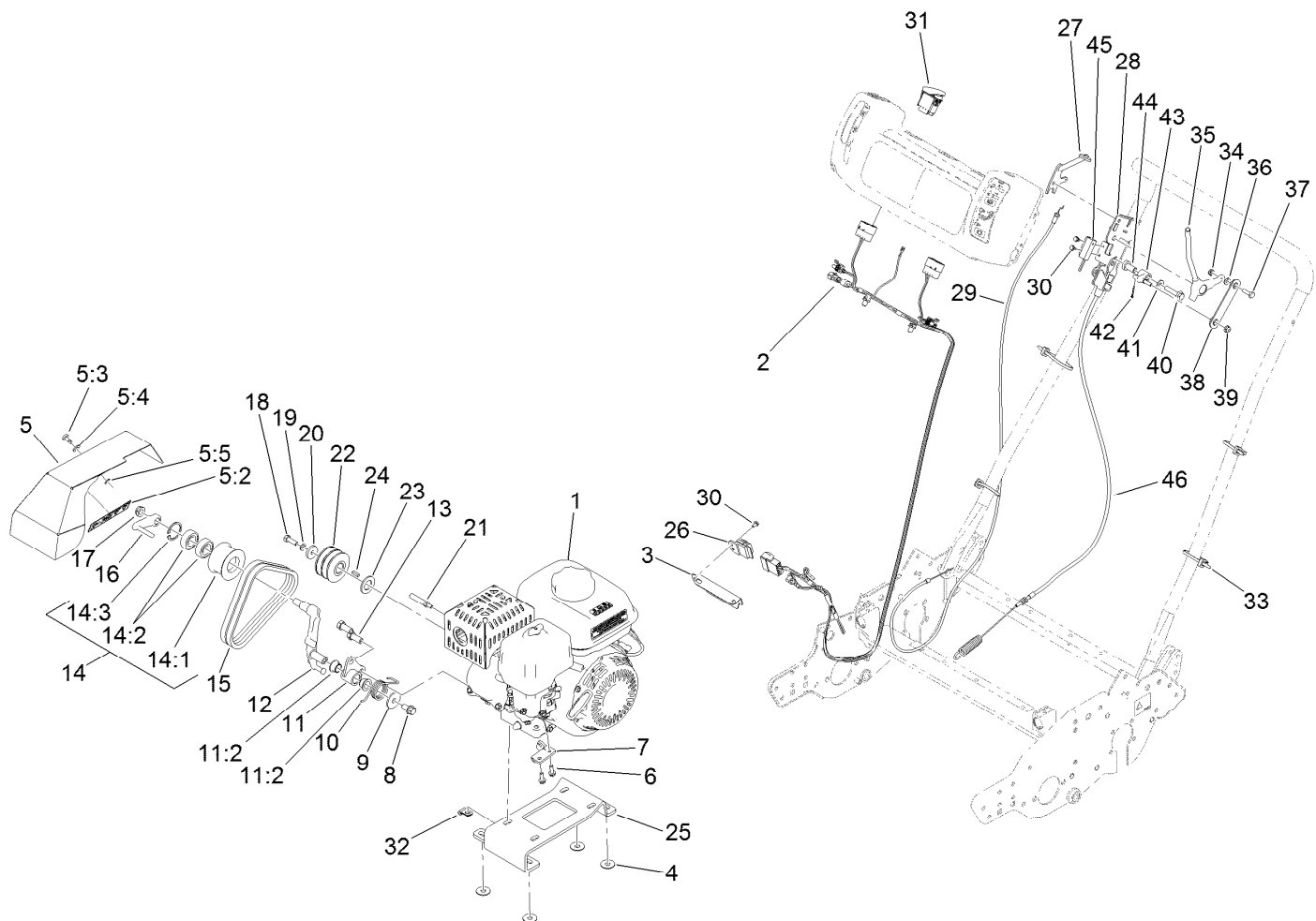
Engine and Gearbox Assembly No. 138-2143 6



Engine Conversion Kit Assembly No. 139-5638

Ref.	Part Number	Qty.	Description
1	138-2143	1	Engine/Gearbox ASM (Honda)
2	122-1227	1	Harness-Wire
3	138-2050	1	Plate-Harness, Wire
4	119-4150	4	Washer-Flat
5	138-2053	1	Bellcrank Cover ASM
5:2	125-5245	1	Decal-Danger, Shields
5:3	93-6074	1	Stud
5:4	3256-70	1	Washer-Flat
5:5	93-6073	1	Washer-Nylon
6	115-5103	2	Screw-HHF
7	139-5611	1	Bracket-Cable, Traction
8	110-1718	1	Screw-HHF
9	138-2145	1	Washer-Flat
10	137-2363	1	Spring-Torque, Clutch Lever
11	137-2357	1	Clutch Bracket ASM
11:2	108-2973	2	Bushing-Flange
12	137-2397	1	Lever-Clutch
13	324-4	2	Screw-HH
14	112-9385	1	Idler Pulley ASM
14:1	98-7297	1	Pulley-Idler

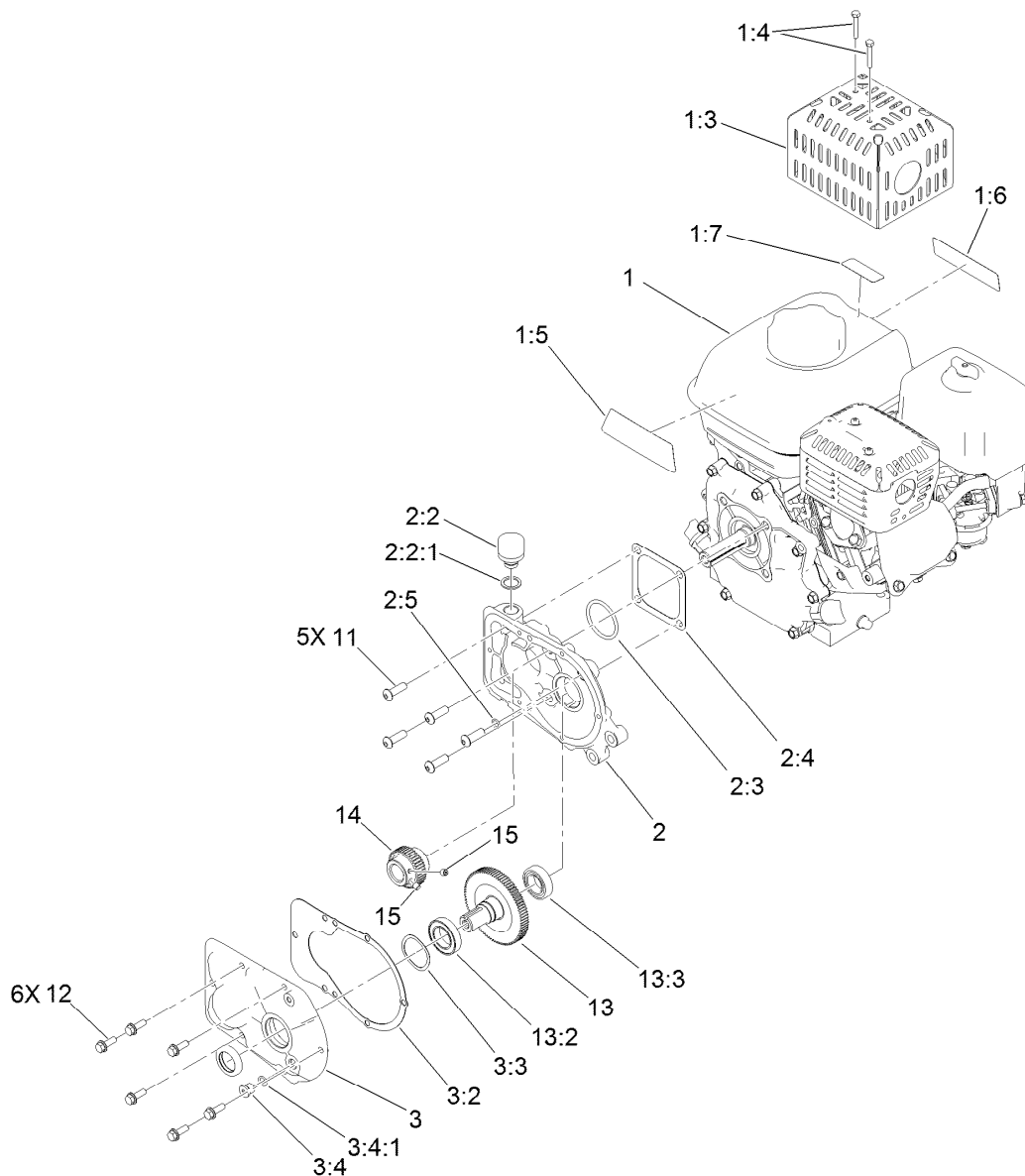
Ref.	Part Number	Qty.	Description
14:2	38-7820	2	Bearing-Ball
14:3	32120-42	1	Ring-Retaining
15	92-9218	2	Belt-V, Matched Set
16	112-9390	1	Guide-Belt
17	3296-45	1	Nut-Hex
18	322-5	1	Screw-HH
19	3253-4	1	Washer-Lock
20	65-8270	1	Washer
21	137-2358	1	Shaft-Pivot, Traction
22	137-2362	1	Pulley-Drive
23	33099-00	1	Washer-Flat
24	94-8850	1	Key-Square
25	120-2751-01	1	Mount-Engine
26	1-323430	1	Module-Interlock
27	120-2697	1	Lever-Throttle
28	125-5188-03	1	Bracket-Traction
29	120-2709	1	Cable-Throttle
29	120-2737	1	Cable-Throttle (GR1600 Only)
30	104-2065	3	Screw-HWH
31	112-9420	1	Switch-Engine



Engine Conversion Kit Assembly No. 139-5638 (continued)

Ref.	Part Number	Qty.	Description
32	88-7970	2	Clip
33	3290-378	4	Tie-Cable
34	3296-56	1	Nut-Lock, NI
35	125-5248	1	Lever-Traction
36	3256-22	1	Washer-Flat
37	321-5	1	Screw-HH
38	132-9579	1	Linkage-Traction
39	104-7201	1	Nut-HF

Ref.	Part Number	Qty.	Description
40	112-9318	1	Screw-HHF, Locking
41	120-9646	1	Washer-Flat
42	3272-6	1	Pin-Cotter
43	130-0114	1	Pivot-Traction
44	65-5080	1	Bushing-Flange
45	100-1270	1	Switch-Proximity
46	139-5605	1	Cable ASM-Clutch



Engine and Gearbox Assembly No. 138-2143

Ref.	Part Number	Qty.	Description
1	138-2118	1	Engine ASM (Honda)●
1:3	138-2128-03	1	Guard-Muffler
1:4	87-5150	2	Screw-HH
1:5	138-2138	1	Decal-Warning, Engine
1:6	133-8062	1	Decal-Arrestor, Spark
1:7	130-8322	1	Decal-Warning, Ethanol
2	138-2119	1	Housing ASM
2:2	133-2359	1	Breather-Vent, Nylon
2:2:1	133-5659	1	Washer-Rubber
2:3	136-7265	1	O-Ring
2:4	136-7266	1	Gasket-Flange
2:5	360-0107	1	O-Ring

Ref.	Part Number	Qty.	Description
3	138-2120	1	Cover ASM
3:2	136-7289	1	Gasket-Housing
3:3	136-7272	1	Spring-Wave
3:4	353-990	1	Plug ASM
3:4:1	237-78	1	O-Ring
11	138-2123	5	Screw-HSBH
12	115-5103	6	Screw-HHF
13	138-2127	1	Output Shaft ASM
13:2	132-0745	1	Bearing
13:3	136-7264	1	Bearing
14	136-7269	1	Gear, 42 Tooth
15	3245-32	2	Screw-HSH

● Obtain parts from www.honda-engines.com

Notes:



Count on it.