



**Proline[®] 53cm
Recycler[®] Mower**

Model No. 22045—210000001 and Up

Parts Catalog

Ordering Replacement Parts

To order replacement parts, please supply: the part number, the quantity, and the description of each part desired.

Understanding Reference Numbers

Each identified part in an illustration has a reference number. The reference number for a part also appears in the parts list, along with other information about the part.

This catalog uses two special reference number formats, one to indicate parts in a service assembly and another to indicate the quantity of a given part in an illustration.

Service Assembly Reference Numbers

Parts in service assemblies have reference numbers in the form **a:b**. The **a** represents the reference number of the entire service assembly and the **b** represents a sequential number unique to each part within the service assembly.

For example, a wheel assembly might be identified by reference number **6**, the tire by **6:1**, the valve by **6:2**, and the wheel by **6:3**. When you order the assembly identified by reference number **6**, you receive all parts identified by reference numbers **6:1**, **6:2**, and **6:3**. However, you may also order any part individually.

Reference numbers of this type appear in illustrations and in part lists.

Reference Numbers Indicating Quantity

In an illustration, if a reference number indicates more than one part, the reference number has the form **nX y**. The **n** represents the quantity of the part, the **X** is the multiplication symbol, and the **y** represents the reference number.

For example, in an illustration, the reference number **2X 37** means that two of the parts identified by reference number **37** are indicated.

Contents

Description	Page	Description	Page
Housing Assembly	3	Rear Wheel and Tire Assembly No. 74-1720 ..	12
Housing Assembly No. 98-7144	4	Grass Bag Assembly No. 99-2535	13
Front Wheel and Tire Assembly	5	Engine and Air Filter Assembly	14
Gear Case Assembly No. 74-1861	6	Crankcase and Crankshaft Assembly	15
Blade Brake Clutch Assembly	7	Muffler Assembly	16
Fuel Tank And Bracket Assembly	8	Ignition Assembly	17
Handle and Handle Latch Assembly	9	Governor Assembly	18
Controls, Bails and Panel Assembly	10	Starter Assembly No. 81-2030	19
Gear Case and Rear Wheel Assembly	11	Carburetor Assembly	20

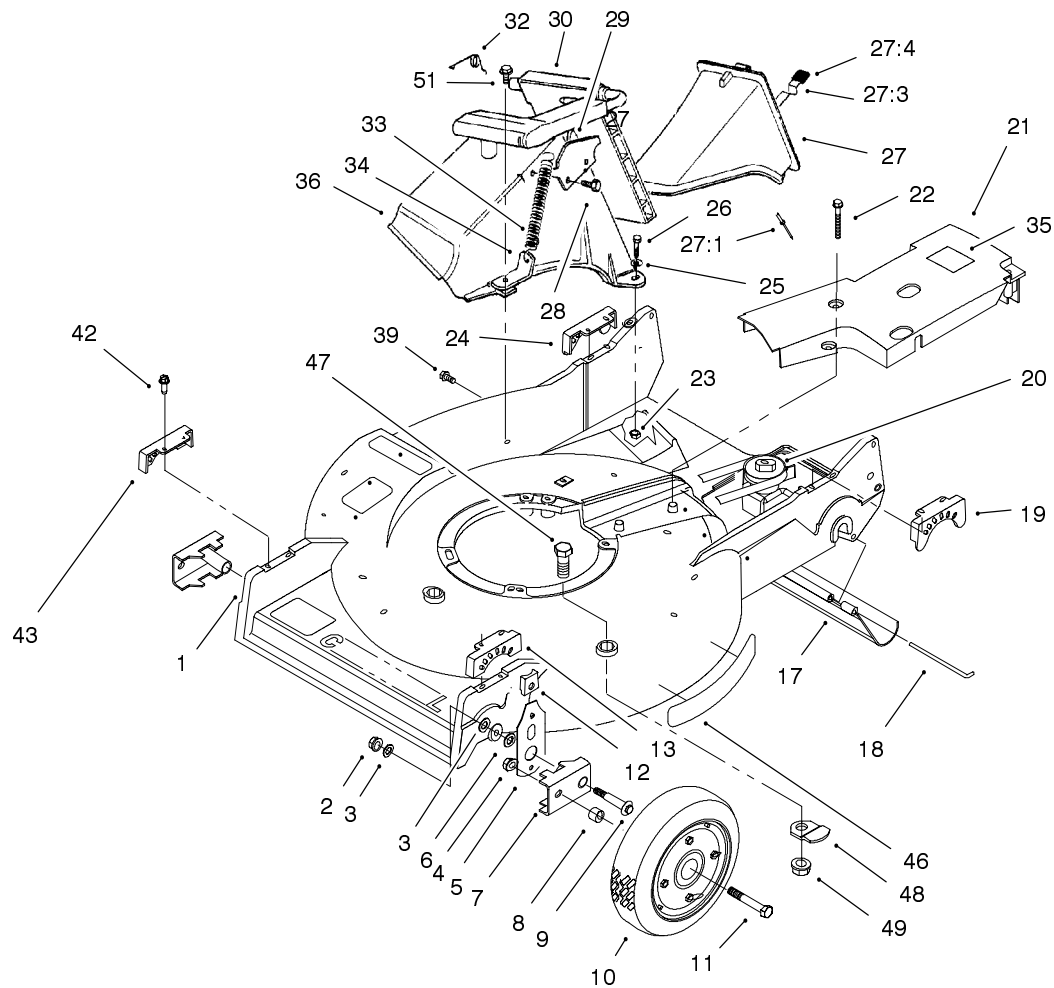
Accessories

Description	Model / Part No.	Description	Model / Part No.
Side Discharge Kit	94-1613	Spark Arrestor Muffler	81-0200

Part Description Abbreviations

Part descriptions in this catalog may include the following abbreviations.

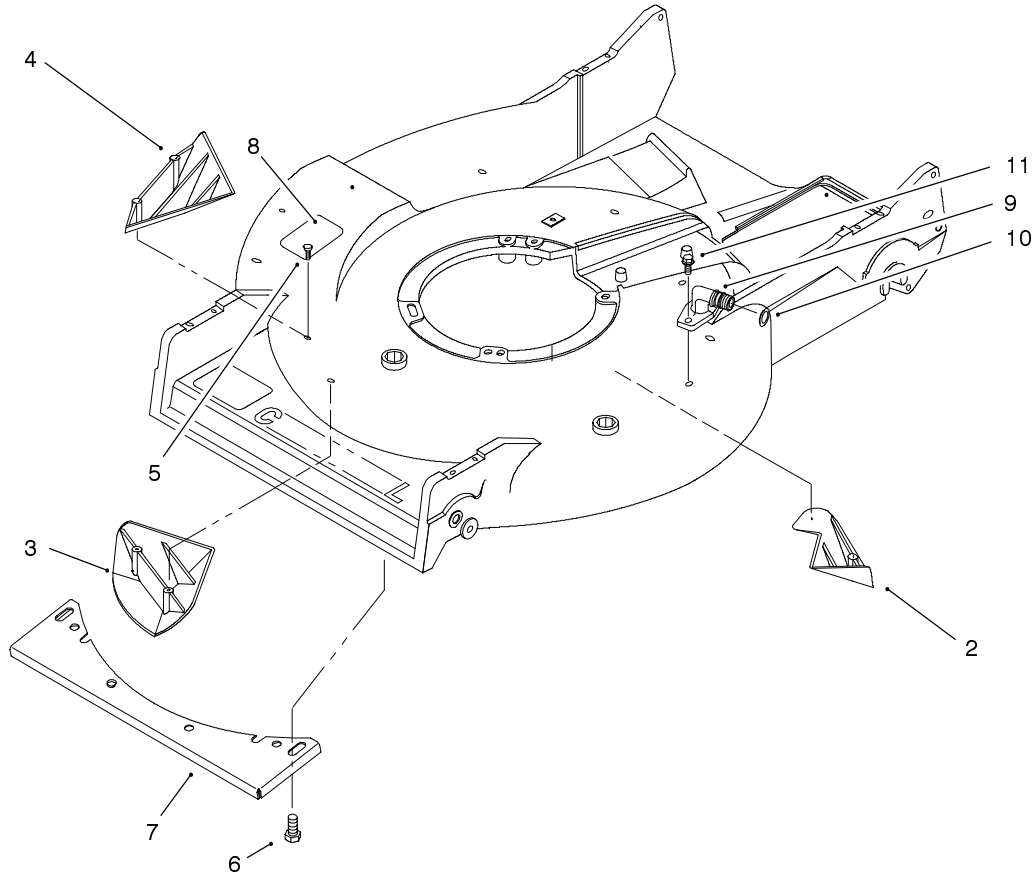
Abbreviation	Meaning	Abbreviation	Meaning
AR	as required	INC	incorporated
ASM	assembly	LH	left hand
CARR	carriage	NI	nylon insert
DEG	degrees	PPH	Phillips pan head
FH	flat head	PTH	Phillips truss head
GA	gauge	PTO	power take off
HF	hex flange	RH	right hand
HH	hex head	SFH	slotted fillister head
HHF	hex head flange	SHH	slotted hex head
HLH	hex lag head	SQH	square head
HJ	hex jam	SHWH	slotted hex washer head
HOC	height-of-cut	SPH	slotted pan head
HS	hex socket	SRH	slotted round head
HSBH	hex socket button head	STD	standard
HSFH	hex socket flat head	TAP	self tapping
HSH	hex socket head	TTH	Torx truss head
HWH	hex washer head	WH	wing head
HWHTF	hex washer head thread forming		



Sheet No.:2
C-2987

Housing Assembly

Ref. No.	Part No.	Qty.	Description	Ref. No.	Part No.	Qty.	Description
1	98-7144	1	Housing	27:4	76-4650	1	Grip-Latch
2	3296-6	2	Nut-Lock, NI	28	46-8090	2	Screw-Plastite
3	40-1940	4	Washer	29	93-3154	1	Latch-Plate
4	32152-2	2	Nut-Conelock	30	93-7351	1	Discharge Door ASM
5	66-7560	2	Front Spring Arm ASM	32	80-3770	1	Retainer-Door
6	257-3	2	Washer-Thrust	33	76-4660	1	Spring-Door
7	61-8300	2	Arm-Pivot, Front	34	71-9350	1	Bracket-Spring
8	52-2480	2	Spacer-Wheel	35	93-6664	1	Decal-Grease, Int'l
9	27-6232	2	Bolt-Wheel	36	82-9151	1	Tunnel-Discharge
10	53-7720	2	Wheel & Tire ASM	39	46-6810	1	Screw & Washer ASM
11	323-12	2	Screw-HH	42	49-2040	8	Screw-Tapping
12	25-7740	2	Knob-Arm	43	49-8770	1	Quadrant-Front, RH
13	49-8760	1	Quadrant-Front, LH	46	92-7988	1	Decal - Recycler
17	44-0580	1	Shield-Trailing	47	323-6	2	Screw-HH
18	33-3208	1	Rod-Shield	48	84-8930	2	Shield-Retainer
19	49-8740	1	Quadrant-Rear, LH	49	3296-39	2	Nut-Lock, NI
20	74-1861	1	Gear Case ASM	51	46-6811	1	Screw-HWH
21	86-5230	1	Belt Cover				
22	37-7260	2	Screw-HH				
23	3296-42	2	Nut-Lock NI				
24	49-8750	1	Quadrant-Rear, RH				
25	3256-22	2	Washer-Flat				
26	321-7	2	Screw-HH				
27	77-0502	1	Discharge Plug ASM				
27:1	3295-35	1	Rivet-Head, Flat				
27:3	76-4640	1	Latch-Plug, Discharge				

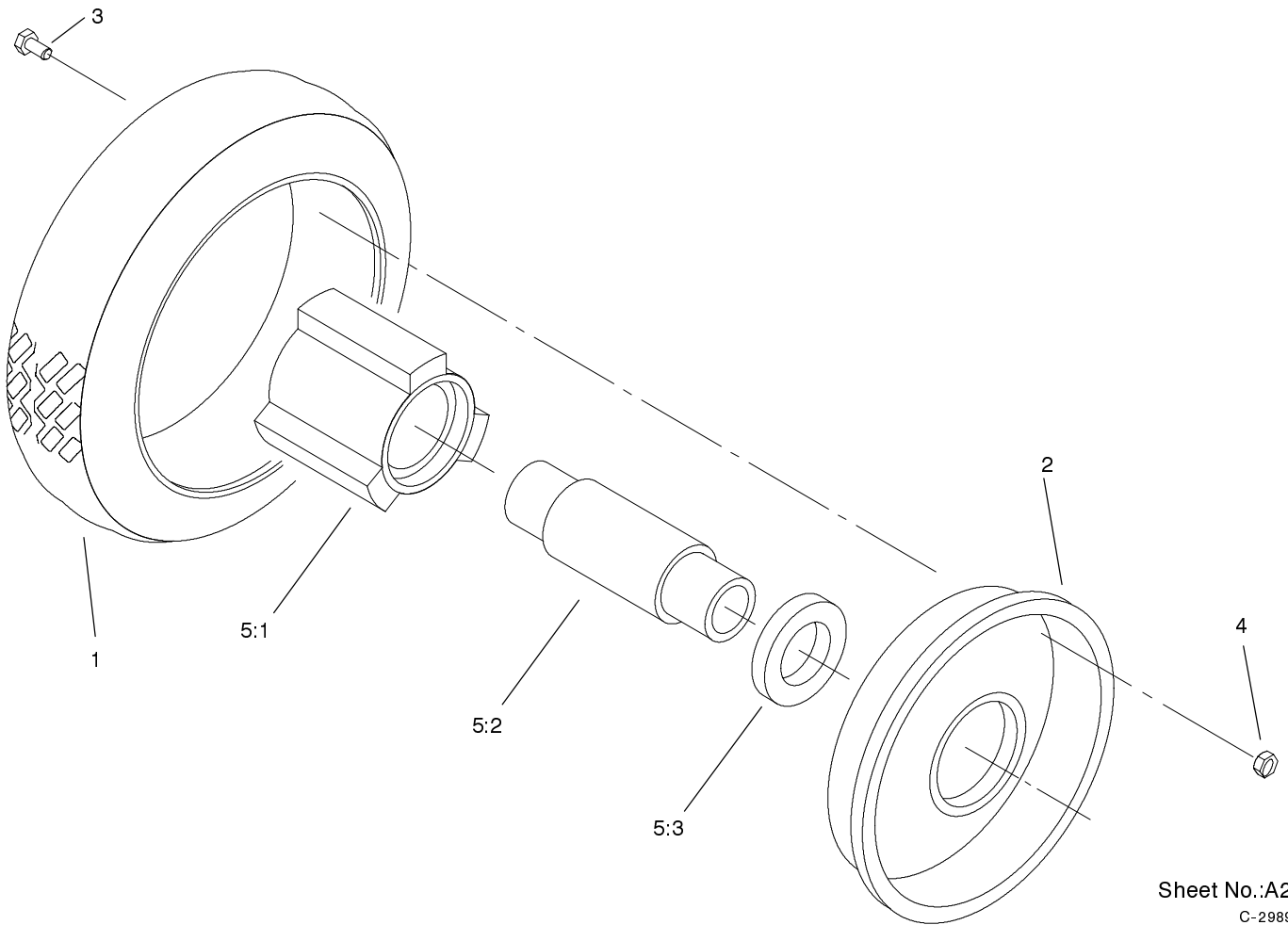


Sheet No.:A1
C-2988

Housing Assembly No. 98-7144

Ref. No.	Part No.	Qty.	Description
2	92-1750	1	Kicker-Rear
3	92-1720	1	Kicker-Front
4	92-1730	1	Kicker-RH
5	32144-111	6	Screw-PPH
6	32144-70	4	Screw-HH
7	46-5400-03	1	Shield
8	93-6654	1	Decal-Danger Covers
9	95-2747	1	Fitting-Washout
10	46-6290	1	O-Ring
11	46-6811	2	Screw-HWH

Ref. No.	Part No.	Qty.	Description



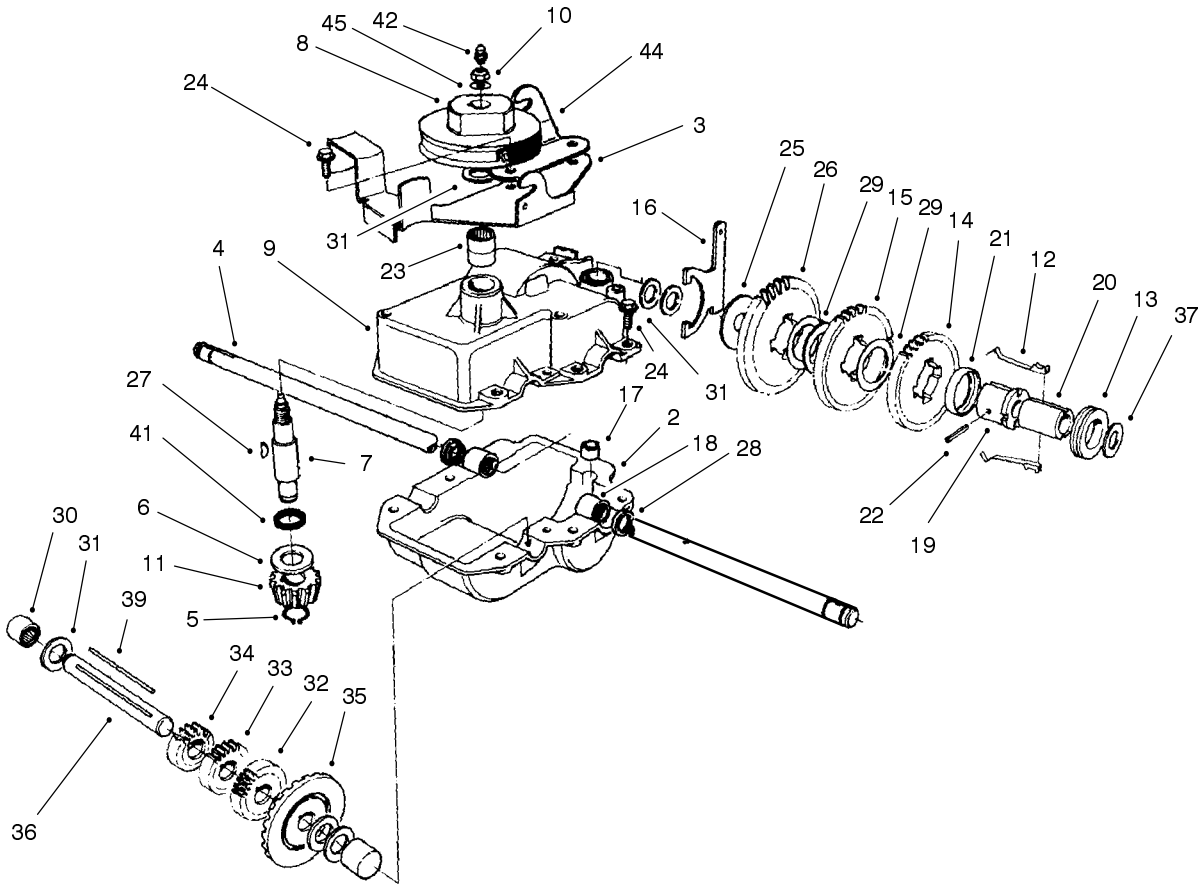
Sheet No.:A2
C-2989

Front Wheel and Tire Assembly

Ref. No.	Part No.	Qty.	Description
1	53-7740	1	Tire
2	53-7780-06	2	Plate-Wheel, Half
3	321-2	4	Screw-HH
4	3296-42	4	Nut-Lock NI
☆5		1	Hub & Bearing ASM
5:1	52-2410	1	Hub-Bearing
5:2	52-2440	1	Spacer-Bearing
5:3	52-2450	2	Bearing-Wheel

Ref. No.	Part No.	Qty.	Description

☆ Not serviced

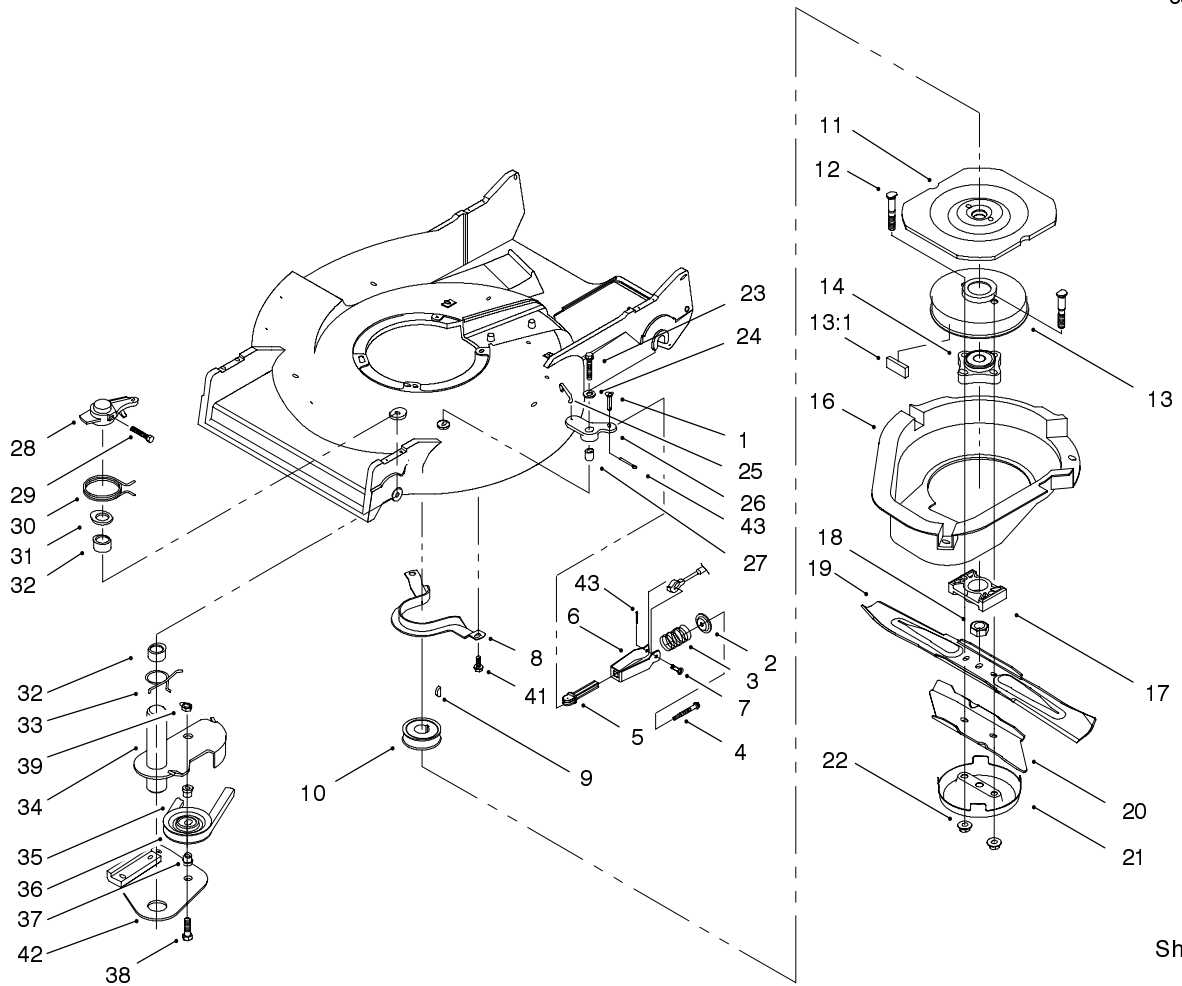


Sheet No.:A3
C-2990

Gear Case Assembly No. 74-1861

Ref. No.	Part No.	Qty.	Description
2	74-1920	1	Case-Gear, Lower
3	49-8461-03	1	Bracket-Guide, Belt
4	74-1890	1	Shaft-Output
5	32151-57	1	Ring-Retaining
6	47-2910	1	Washer-Thrust
7	68-8190	1	Shaft-Input
8	39-6740	1	Pulley
9	74-1880	1	Case-Gear, Upper
10	3296-5	1	Nut-Lock NI
11	39-6660	1	Pinion-Bevel
12	29-9330	2	Key
13	29-9340	1	Collar-Shift
14	42-4740	1	Gear-38 Tooth
15	29-9271	1	Gear-42 Tooth
16	60-8870	1	Yoke-Shift
17	29-9570	1	Bushing-Yoke
18	47-6730	2	Seal-Oil
19	55-8010	1	Sleeve-Gear
20	39-6720	1	Sleeve
21	55-8020	1	Retainer-Key
22	3285-19	1	Pin-Groove
23	47-7270	2	Bearing
24	49-2040	6	Screw-Tapping
25	29-9690	1	Washer
26	46-3560	1	Gear
27	3257-1	2	Key-Woodruff

Ref. No.	Part No.	Qty.	Description
28	48-2060	2	Bearing-Roller
29	36-4770	3	Washer
30	252-103	2	Bearing-Closed
31	36-4792	4	Washer-Thrust
32	39-6650	1	Gear-18t
33	46-3550	1	Gear-14t
34	46-3540	1	Gear-12t
35	74-1760	1	Gear-Bevel
36	53-7950	1	Shaft-Intermediate
37	36-4780	3	Washer
39	39-7842	1	Key
41	47-7260	1	Seal
42	302-63	1	Zerk
44	74-1750-03	1	Brake-Engage, Traction
45	3256-45	1	Washer-Flat

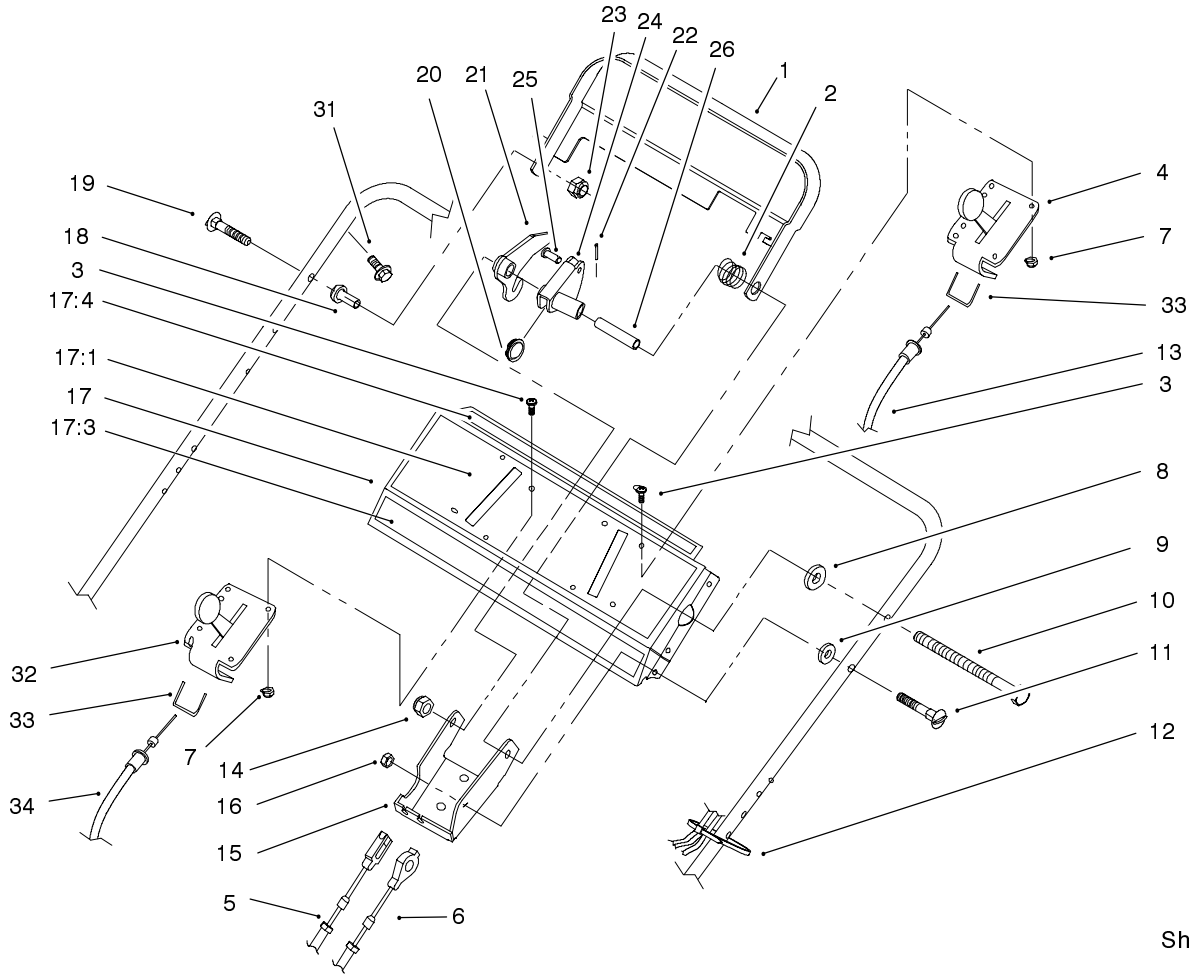


Sheet No.:3

Blade Brake Clutch Assembly

Ref. No.	Part No.	Qty.	Description
1	84-9050	1	Pin-Spring
2	65-5280	1	Retainer-Spring
3	84-9100	1	Spring
4	46-7040	1	Screw-HWHTF
5	84-8870	1	Guide-Spring
6	84-8880-03	1	Bracket-Spring
7	84-9040	1	Pin-Cable
8	66-0570-03	1	Bracket-Guide, Belt
9	3257-17	1	Key-Woodruff
10	56-6180	1	Driver-Pulley
11	56-6160-03	1	Flywheel - Bbc
12	42-3190	2	Bolt-Blade
13	94-9431	1	Brake Drum ASM
13:1	52-3480	2	Dampner-Vibration
14	42-6890	1	Hub ASM
16	46-5693	1	Shield
17	62-4280	1	Spacer-Blade
18	603164	1	Nut-Blade
19	14-9419	1	Blade
20	91-2255-03	1	Stiffener-Blade
21	80-2770	1	Cup-Anti-Scalp
22	54-9190	2	Nut-Lock
23	32104-107	1	Screw-HH
24	3256-23	1	Washer-Flat
25	49-2810	1	Link - Control
26	49-7960	1	Bellcrank

Ref. No.	Part No.	Qty.	Description
27	49-7950	1	Sleeve-Bellcrank
28	49-2820	1	Lever
29	32104-96	1	Screw-HH
30	49-7970	1	Spring-Torsion
31	70-1160	1	Washer
32	68-9780	2	Bearing
33	85-6880	1	Spring-Torsion
34	84-9130	1	Plate-Brake
35	42-0884	1	V-Belt
36	46-5650	1	Pulley-Idler
37	46-5631	2	Hub-Pulley, Idler
38	322-6	1	Screw-HH
39	3296-47	1	Nut-Lock, NI
41	32144-70	2	Screw-HH
42	84-9180	1	Brake Plate ASM
43	3272-1	2	Pin-Cotter

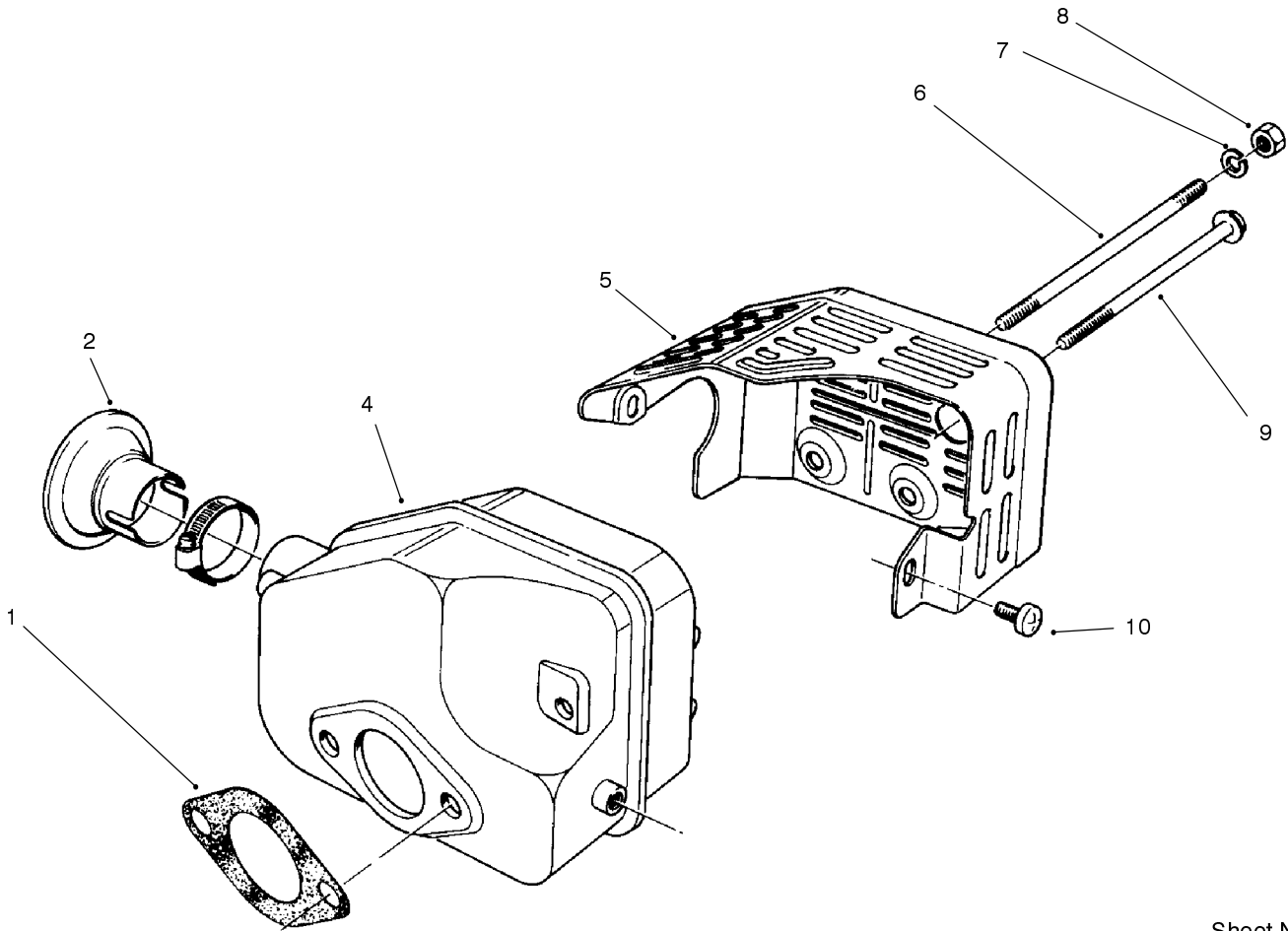


Sheet No.:6

Controls, Bails and Panel Assembly

Ref. No.	Part No.	Qty.	Description
1	84-8940-03	1	Bar-Control
2	85-6750	1	Spring-Control
3	3250-12	8	Screw-PPH
4	85-6770	1	Control-Throttle
5	84-9120	1	Cable-Traction
6	84-9110	1	Cable-Clutch
7	3296-2	8	Nut-Lock
8	71-9310	1	Spacer
9	71-9320	1	Spacer
10	322-19	1	Screw-HH
11	46-6430	1	Screw-Handle
12	3290-378	1	Tie-Cable
13	85-6760	1	Cable-Throttle
14	3296-29	1	Nut-Lock
15	92-1778-03	1	Bracket-Control
16	3296-42	1	Nut-Lock NI
17	99-8135	1	Panel ASM
17:1	98-2048	1	Decal-Control Panel
17:3	85-6720	1	Decal-Panel, Proline
17:4	93-6655	1	Decal-Panel, Rear
18	49-1631	1	Spacer-Support
19	17-9427	1	Screw
20	86-9320	1	Bushing-Flange
21	84-9000	1	Lever-Traction
22	3272-1	1	Pin-Cotter
23	3296-58	1	Nut-Lock NI

Ref. No.	Part No.	Qty.	Description
24	84-8990	1	Lever-Bbc
25	84-9040	1	Pin-Cable
26	84-9030	1	Spacer-Bracket, Control
31	32104-76	6	Screw
32	99-2542	1	Control-Shift, Bbc
33	85-6780	2	Retainer-Cable, Throttle
34	99-2541	1	Cable-Shift, Bbc

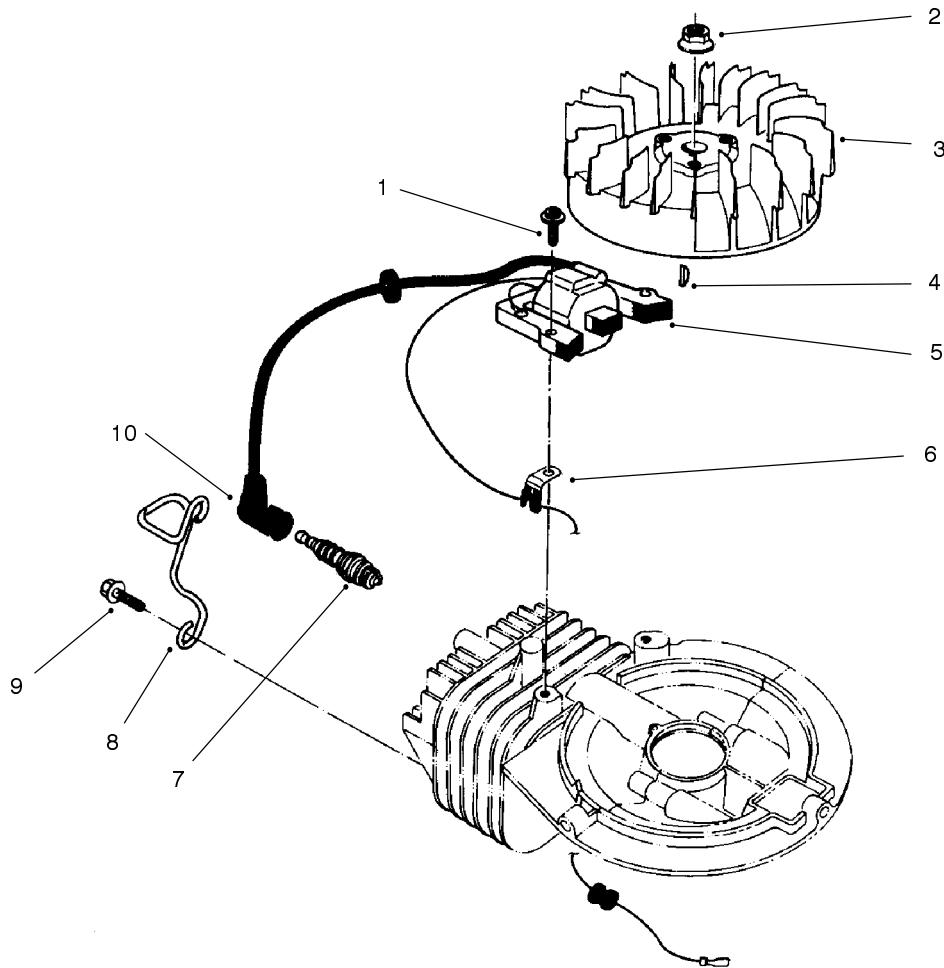


Sheet No.:51
T-0667

Muffler Assembly

Ref. No.	Part No.	Qty.	Description
1	81-1080	1	Gasket
2	81-0200	1	Spark Arrestor
4	81-5690	1	Muffler
5	81-2450	1	Muffler Cover
6	81-1100	2	Bolt
7	81-1120	2	Lockwasher
8	81-1110	2	Nut
9	81-1150	1	Bolt
10	81-1140	2	Screw

Ref. No.	Part No.	Qty.	Description

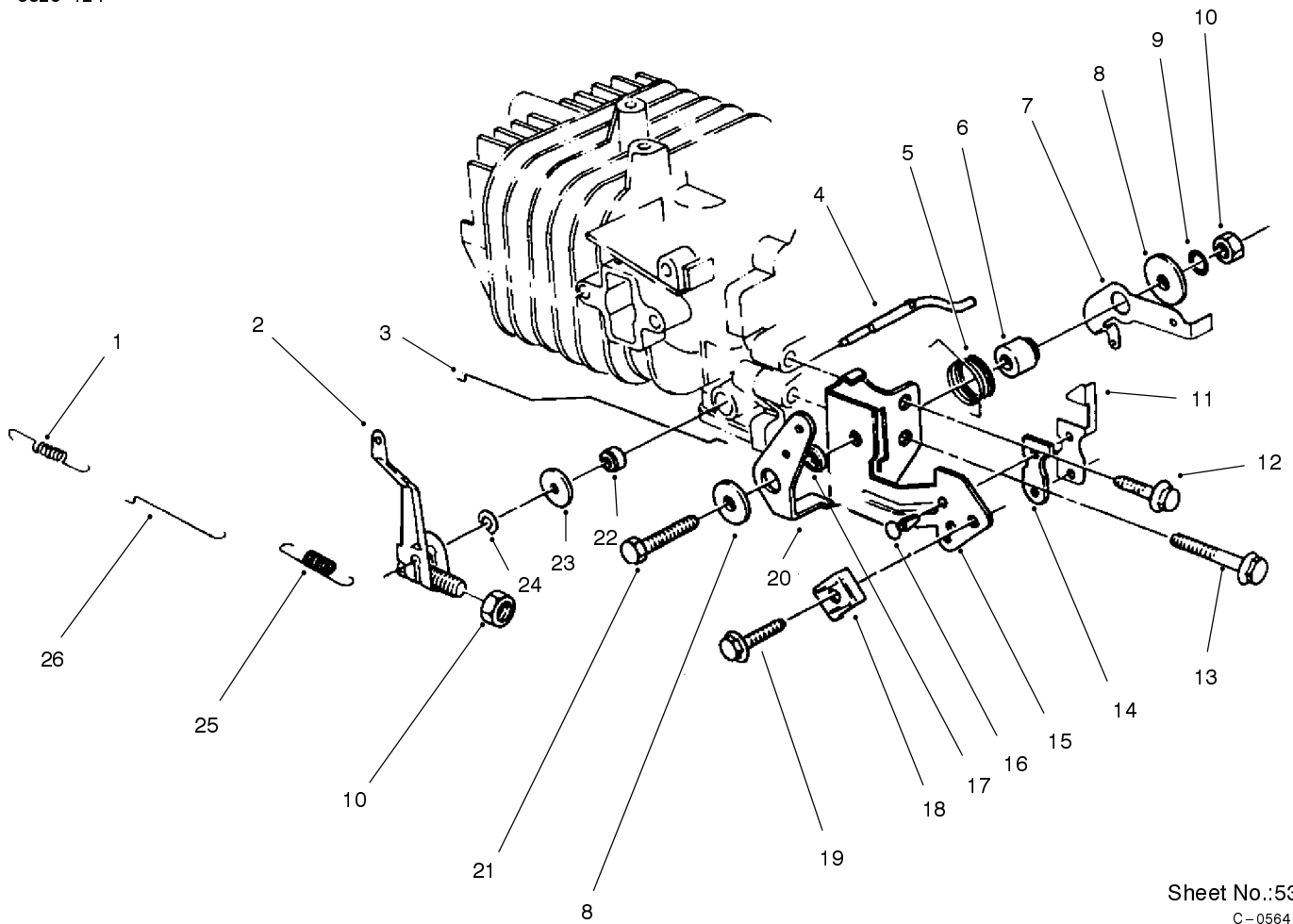


Sheet No.:52
T-0664

Ignition Assembly

Ref. No.	Part No.	Qty.	Description	Ref. No.	Part No.	Qty.	Description
1	81-5680	2	Screw				
2	81-1330	1	Nut				
3	81-2810	1	Flywheel				
4	81-2370	1	Key				
5	81-2820	1	Coil-Magneto				
6	81-1480	1	Clamp				
7	81-0181	1	Sparkplug				
8	81-2120	1	Protector-Plug				
9	81-2350	2	Screw				
10	81-1500	1	Cap-Sparkplug				
*11	41-7650	1	Puller-Flywheel				

* Not illustrated

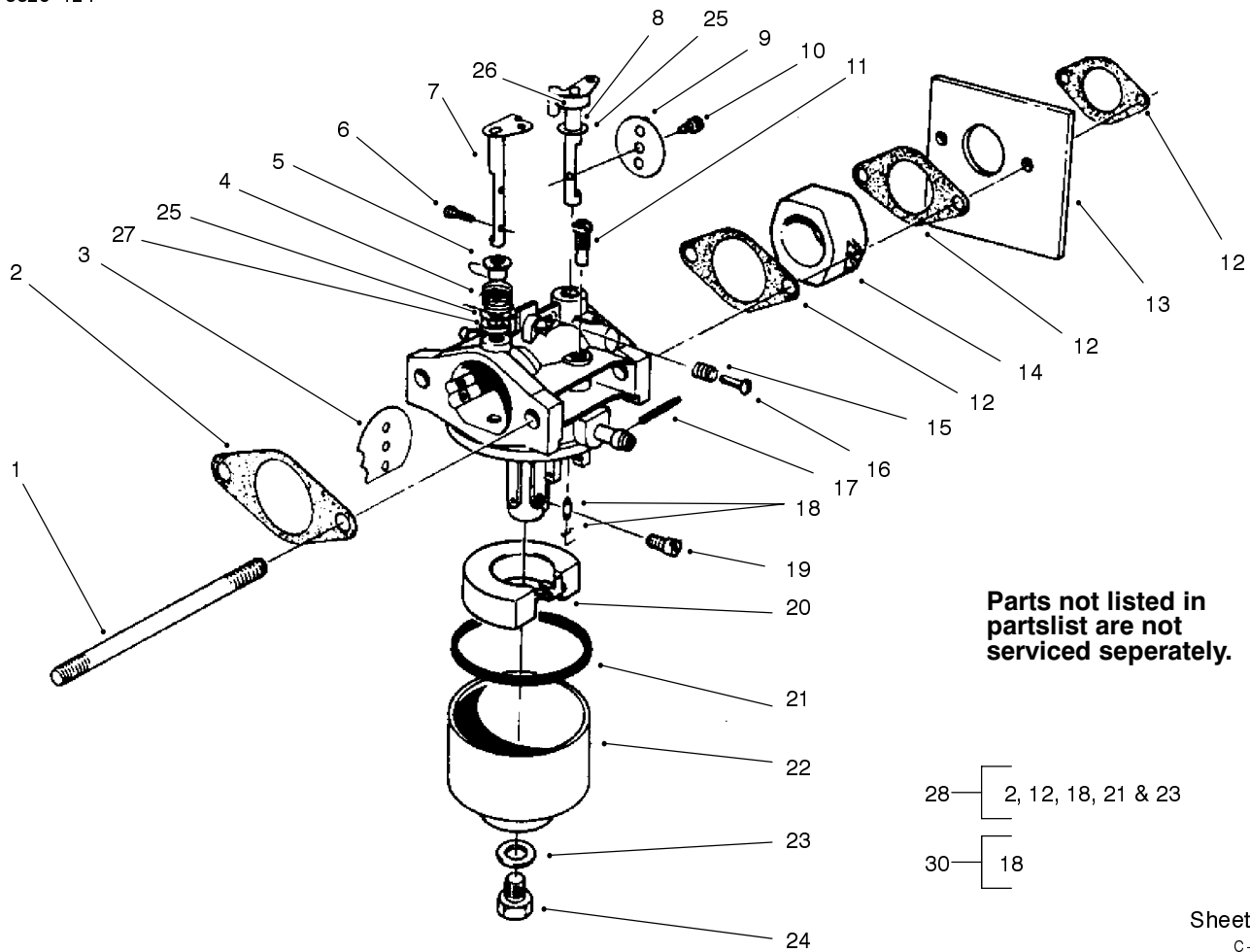


Sheet No.:53
C-0564

Governor Assembly

Ref. No.	Part No.	Qty.	Description
1	81-0920	1	Spring
2	81-5420	1	Arm-Governor
3	81-5410	1	Rod-Choke
4	81-2880	1	Shaft
5	81-2460	1	Spring-Choke Lever
6	81-5780	1	Spacer
7	81-2850	1	Lever-Spring, Governor
8	81-1750	2	Washer
9	81-1450	1	Lockwasher
10	81-0900	2	Nut
11	81-1840	1	Terminal-Kill Switch
12	81-1170	1	Bolt
13	81-0540	1	Bolt
14	81-1830	1	Kill Switch Insulator
15	81-5770	1	Bracket
16	81-4530	2	Rivet
17	81-2470	1	Spacer-Choke Lever
18	81-2430	1	Clamp
19	50-0130	1	Bolt
20	81-1710	1	Lever-Choke Control
21	81-1730	1	Bolt
22	81-0850	1	Seal-Oil
23	81-0860	1	Washer
24	81-0870	1	E-Ring

Ref. No.	Part No.	Qty.	Description
25	81-2830	1	Spring-Governor
26	81-0910	1	Rod-Carburetor



Parts not listed in partslist are not serviced seperately.

28 — [2, 12, 18, 21 & 23
30 — [18

Sheet No.:55
C-2994

Carburetor Assembly

Ref. No.	Part No.	Qty.	Description
1	81-5450	2	Stud-Carburetor
2	81-0090	1	Gasket-Air Cleaner
3	81-0240	1	Plate
4	81-0230	1	Spring
5	81-0220	1	Bushing
6	81-2160	2	Screw
7	81-1950	1	Shaft-Choke
8	81-0250	1	Shaft
9	81-0260	1	Plate
10	81-2160	1	Screw
11	94-1684	1	Jet-Pilot
12	81-0780	3	Gasket-Carburetor
13	81-5490	1	Shield-Carburetor
14	81-5440	1	Insulator-Carburetor
15	81-2580	1	Spring-Pilot Screw
16	50-0250	1	Screw
17	81-2600	1	Pin-Hinge
18	81-4910	1	Needle
19	81-1060	1	Jet-Main
19	81-2340	1	Jet-High Altitude
20	81-0970	1	Float
21	81-1010	1	Gasket
22	81-5660	1	Bowl - Float
23	81-1020	1	Gasket
24	81-5670	1	Screw
25	81-2530	2	Seal

Ref. No.	Part No.	Qty.	Description
26	81-2540	1	Ring
27	81-2550	1	Packing
28	12-6379	1	Kit-Carburetor
*29	81-2520	1	Carburetor ASM, Complete
30	81-5810	1	Needle-Seat Set
*31	94-1687	1	Carburetor ASM With Primer

* Not illustrated

