



Spindle Motor Kit

For Groundsmaster 3000 Contour Cutting Unit

Part. No. 100–5747

Parts Catalog

Ordering Replacement Parts

To order replacement parts, please supply: the part number, the quantity, and the description of each part desired.

Understanding Reference Numbers

Each identified part in an illustration has a reference number. The reference number for a part also appears in the parts list, along with other information about the part.

This catalog uses two special reference number formats, one to indicate parts in a service assembly and another to indicate the quantity of a given part in an illustration.

Service Assembly Reference Numbers

Parts in service assemblies have reference numbers in the form **a:b**. The **a** represents the reference number of the entire service assembly and the **b** represents a sequential number unique to each part within the service assembly.

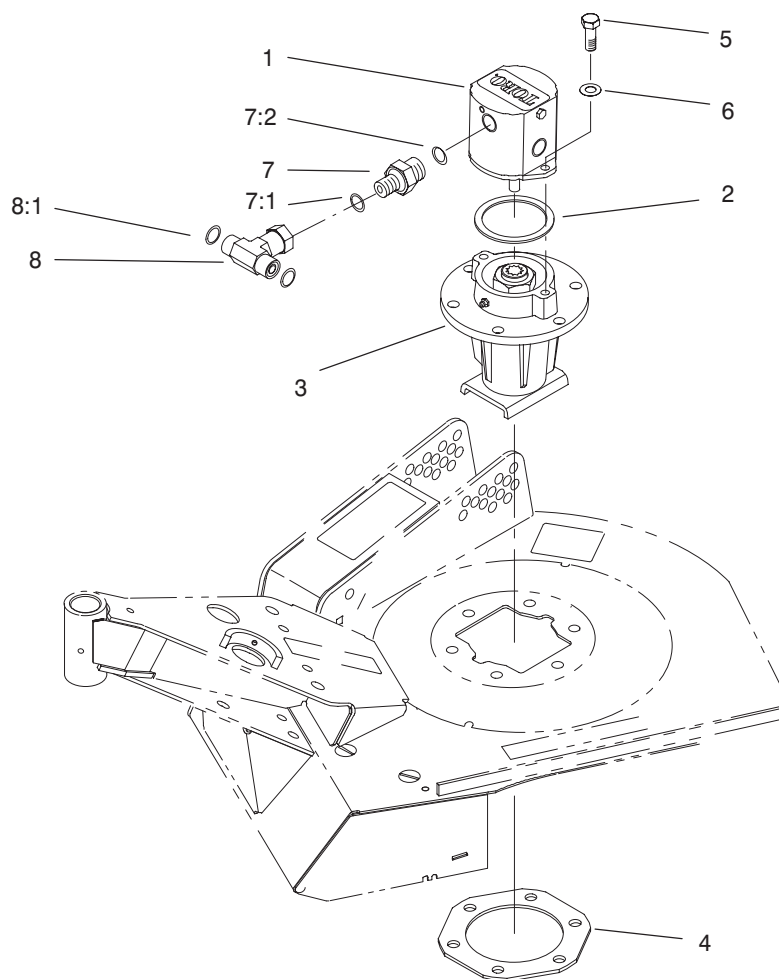
For example, a wheel assembly might be identified by reference number **6**, the tire by **6:1**, the valve by **6:2**, and the wheel by **6:3**. When you order the assembly identified by reference number **6**, you receive all parts identified by reference numbers **6:1**, **6:2**, and **6:3**. However, you may also order any part individually.

Reference numbers of this type appear in illustrations and in part lists.

Reference Numbers Indicating Quantity

In an illustration, if a reference number indicates more than one part, the reference number has the form **nX y**. The **n** represents the quantity of the part, the **X** is the multiplication symbol, and the **y** represents the reference number.

For example, in an illustration, the reference number **2X 37** means that two of the parts identified by reference number **37** are indicated.



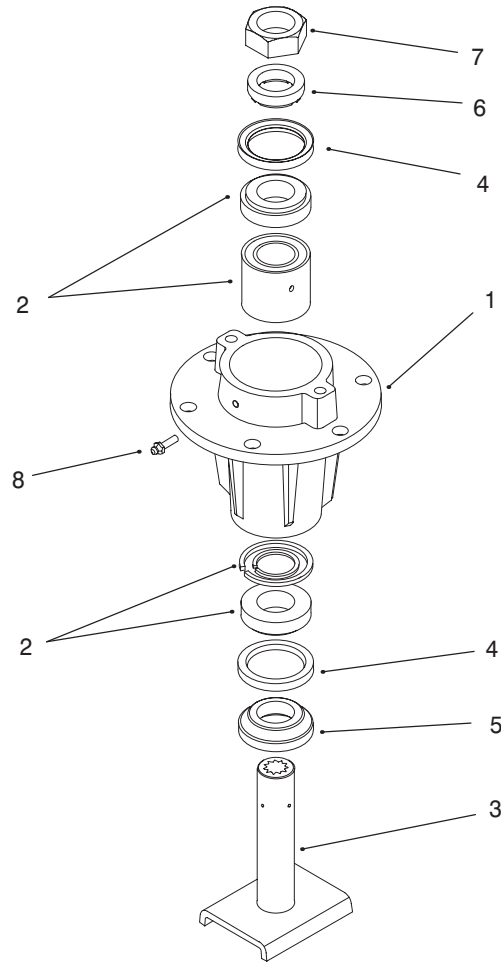
Sheet No.:0

Spindle Motor Assembly

Ref. No.	Part No.	Qty.	Description
1	99-6104	1	Motor – Hyd
*1:2	99-6105	1	Seal Kit
*1:3	98-5185	1	Back Flange/Valve Kit
*1:4	98-5191	1	Relief Valve Kit
2	237-161	1	O-Ring
3	98-0697	1	Spindle ASM
4	98-0680-03	1	Plate-Support
5	3274-49	2	Screw-HSH
6	3256-25	2	Washer-Flat
7	340-88	1	Adapter
7:1	237-22	1	O-Ring
7:2	237-78	1	O-Ring
8	340-166	1	Fitting-Tee
8:1	237-22	2	O-Ring

Ref. No.	Part No.	Qty.	Description

* Not Illustrated



Sheet No.:A1

Spindle Assembly No. 98-0697

Ref. No.	Part No.	Qty.	Description	Ref. No.	Part No.	Qty.	Description
1	96-1269	1	Housing-Spindle				
2	93-4825	1	Spacer & Bearing Kit				
3	96-1271	1	Spindle Shaft ASM				
4	253-154	2	Seal - Oil				
5	69-6950	1	Spacer - Spindle Shaft				
6	96-1272	1	Spacer - Seal				
7	3296-68	1	Nut-Lock Ni				
8	302-62	1	Zerk Fitting				

